

282-284 Washington Street Community Meeting

May 3, 2023



282-284 Washington Street

Reunión de la comunidad

3 de mayo de 2023



282-284 Washington Street Reyinyon Kominotè

3 Me 2023



282-284 Washington Street Reunion Komunitariu

3 di maiu di 2023



OVERVIEW

- **Introductions**
- **About the Grassroots Program**
- **Site Details**
- **Discussion: Comments and Q+A**
- **Next Steps**

Resumen

- **Presentaciones**
- **Acercas del Programa Grassroots**
- **Detalles del emplazamiento**
- **Discusión: Comentarios y preguntas y respuestas**
- **Próximos pasos**

APÈSI



- **Entwodiksyon**
- **Konsènan Pwogram Kominotè**
- **Detay sou sit la**
- **Diskisyon: Kòmantè ak K+R**
- **Pwochen etap yo**

Vizon Jeral

- **Aprezentason**
- **Sobri Programa Grassroots**
- **Detalhis di Lokal**
- **Diskusyon: Komentarius y Q+A**
- **Prósimus Pasu**

INTRODUCTIONS

- **MOH/GrowBoston staff**
- **Elected officials**
- **Neighborhood association board members**



Edgewater Food Forest, Mattapan

PRESENTACIONES

- **Personal de la Oficina del Alcalde para la Vivienda (MOH)/GrowBoston**
- **Funcionarios electos**
- **Miembros de la Junta de la Asociación Vecinal**



Edgewater Food Forest, Mattapan

ENTWODIKSYON YO

- Anplwaye MOH/GrowBoston
- Ofisyèl eli yo
- Manm konsèy asosyasyon katye yo



Edgewater Food Forest, Mattapan

APREZENTASON

- **Ekipa di MOH/GrowBoston**
- **Reprezentatis Eleitu**
- **Menbrus di konselhu di asosiason di bairu**



*Edgewater Food Forest - Floresta di Alimentus
Edgewater, Mattapan*

A street scene featuring a crosswalk with white stripes on a dark asphalt road. In the background, there is a chain-link fence, a stone wall, and a dense line of green trees. To the right, a portion of a two-story house with light-colored siding is visible. On the left, a traffic light pole holds a colorful geometric flag. A pedestrian crossing signal with a red hand icon is on the right side of the sidewalk.

About the Grassroots Program

MAYOR'S OFFICE OF HOUSING



A photograph of a street intersection. In the foreground, a crosswalk with white stripes is visible on the asphalt. To the left, a traffic light pole holds a colorful flag. A sidewalk runs along the street, leading to a chain-link fence that separates the street from a grassy area with trees. In the background, a house with a grey roof and a satellite dish is partially visible. The scene is brightly lit, suggesting a sunny day.

Acerca del Programa Grassroots

MAYOR'S OFFICE OF HOUSING





Konsènan Pwogram Kominotè yo



Sobri Programa Grassroots

MAYOR'S OFFICE OF HOUSING



GROWBOSTON

Office of Urban Agriculture



East Cottage Farm, Roxbury

- **GrowBoston's goal is to increase food production and support local food producers in Boston, including gardeners, farmers, beekeepers, and more.**
 - *Support for innovative food production strategies*
 - *Technical assistance to farms and gardens*
 - *Educational resources*
 - *And more!*
- **Part of the Mayor's Office of Housing (MOH)**

GROWBOSTON

Oficina de Agricultura Urbana



Granja East Cottage, Roxbury

- **El objetivo de GrowBoston es aumentar la producción de alimentos y apoyar a los productores locales de alimentos de Boston, incluidos jardineros, agricultores, apicultores, etc.**
 - *Apoyo a estrategias innovadoras de producción de alimentos*
 - *Asistencia técnica a granjas y huertos*
 - *Recursos educativos*
 - *¡Y mucho más!*
- **Parte de la Oficina del Alcalde para la Vivienda (MOH)**

GROWBOSTON

Biwo Agrikilti Iben



East Cottage Farm, Roxbury

- **Objektif GrowBoston se pou ogmante pwodiksyon manje ak sipòte pwodiktè manje lokal yo nan Boston, sa ki gen ladan jaden, kiltivatè, fèmme, apikiltè, ak plis ankò.**
 - *Sipò pou estrateji pwodiksyon manje inovatè*
 - *Asistans teknik nan fèm ak jaden*
 - *Resous edikasyon*
 - *Ak plis ankò!*
- **Pati nan Biwo Lojman Majistra (MOH)**

GROWBOSTON

Gabineti pa Agrikultura Urbanu



Kinta di East Cottage, Roxbury

- **Objetivu di GrowBoston é aumenta produson di alimentus y apoia produtoris lokal di alimentus na Boston, inkluindu jardinerus, agrikultoris, apikultoris y mutu mas.**
 - *Apoiu pa stratéjias inovador di produson di alimentu*
 - *Asisténsia téknika na kintas y jardin*
 - *Rekursus edukasional*
 - *E mutu mas!*
- **Parti di Gabineti pa Abitason di Kamara Munisipal (MOH)**

GRASSROOTS PROGRAM

Program of GrowBoston



Savin Hill Wildlife Garden, Dorchester

- **Provides City-owned land, grant funds, and technical assistance to neighborhood groups and non-profits for:**
 - *Community gardens*
 - *Urban farms*
 - *Other open space uses*

PROGRAMA GRASSROOTS

Programa GrowBoston



Jardín Savin Hill Wildlife, Dorchester

- **Proporciona predios propiedad de la ciudad, fondos de subvención y asistencia técnica a grupos vecinales y organizaciones sin ánimo de lucro para:**
 - *Huertos comunitarios*
 - *Granjas urbanas*
 - *Otros usos para espacios abiertos*

PWOGRAM KOMINOTÈ

Pwogram GrowBoston



Jaden Savin Hill Wildlife, Dorchester

- **Bay teren vil la posede, fon sibvansyon, ak asistans teknik pou gwoup katye yo ak òganizasyon ki pa pou pwofi yo pou:**
 - *Jaden Kominotè*
 - *Fèm Iben*
 - *Lòt itilizasyon espas ouvè*

PROGRAMA GRASSROOTS

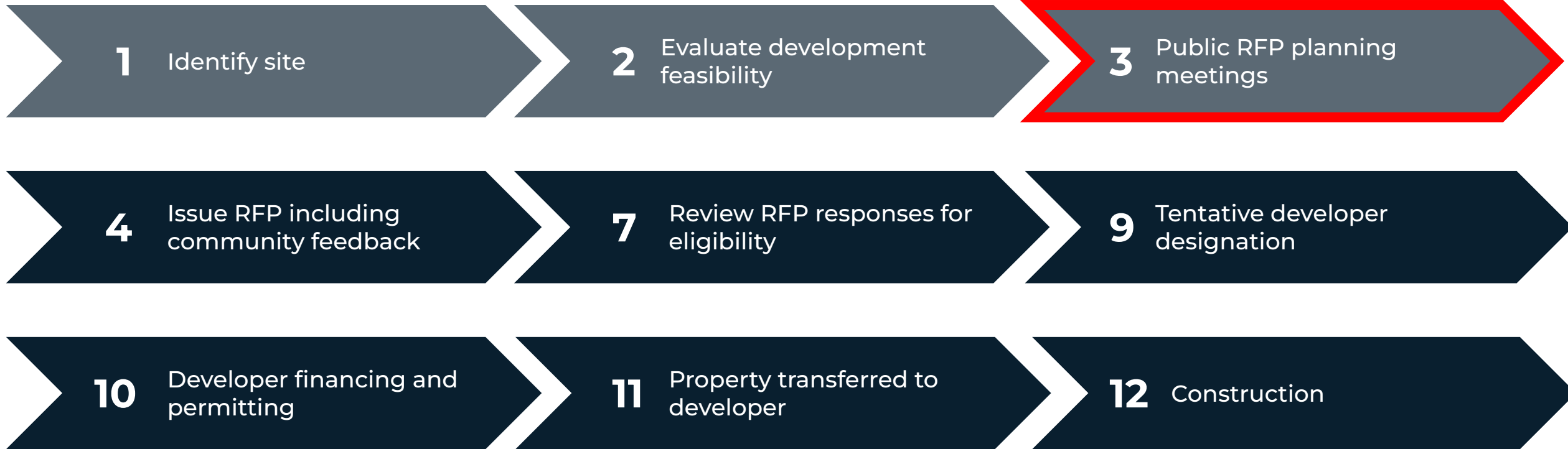
Programa di GrowBoston



*Savin Hill Wildlife Garden - Jardin di Vida
Selvagen di Savin Hill, Dorchester*

- **Ta furnesi terrenus di proprietadi di Sidadi, ta oferesi finansiamentu y asisténsia tekniku pa grupus di bairu y organizason sen fins lukrativu pa:**
 - *Kes jardin komunitariu*
 - *Kes kinta urbanu*
 - *Otu utilizason di spasus abertu*

MOH LAND DISPOSITION PROCESS



PROCESO DE DISPOSICIÓN DEL PREDIO DE LA MOH



PWOSESIS ELIMINASYON TEREN MOH



PROSESU DI DISPONILIDADI DI TERENU DI MOH



MOH PROCUREMENT PROCESS

Under Chapter 30B



- [M.G.L. c. 30B \(Chapter 30B\)](#) establishes an advertised proposal process that COB must follow in acquiring and disposing real estate property by purchase, sale or rental with a value greater than \$35,000.
- **Under Chapter 30B** we are required to conduct an **open and fair competitive process** that places all proposers on common footing, solicit information that will allow **manageable and meaningful comparisons of offers** and base decisions solely on the information solicited (what we've heard from the community).

PROCESO DE ADQUISICIÓN DE LA MOH

En virtud del capítulo 30B

- **L.G.M. c. 30B (Capítulo 30B)** establece un proceso de propuesta anunciada que la COB (ciudad de Boston) debe seguir para adquirir y enajenar bienes inmuebles mediante compra, venta o alquiler con un costo superior a \$35.000.
- **En virtud del Capítulo 30B** tenemos la obligación de llevar a cabo un **proceso competitivo abierto y justo** en el que se dé una base común a todos los proponentes, se solicite información que permita establecer **comparaciones manejables y significativas de las ofertas** y se basen las decisiones únicamente en la información solicitada. (lo que hemos escuchado de la comunidad).

PWOSESIS AKIZISYON MOH

Anba Chapit 30B



- [M.G.L. c. 30B \(Chapit 30B\)](#) etabli yon pwosesis pwopozisyon piblisite ke COB dwe swiv nan achte ak jete byen imobilye pa acha, vann oswa lokasyon ki gen yon valè ki pi gran pase \$35,000.
- **Anba Chaptit 30B** nou gen obligasyon pou fè yon **Pwosesis konpetitif ouvè ak ekitab** ki mete tout moun ki pwopoze yo sou baz komen, **mande enfòmasyon ki pral pèmèt yo jere konparezon òf yo** ak baz desizyon sèlman sou enfòmasyon yo mande yo (sa nou te tande de kominote a).

PROSESU DI AKIZISON DI MOH

Segundu Kapitulu 30B

- [M.G.L. c. 30B \(Kapitulu 30B\)](#) ta stablesi un prosesu di proposta anunsiadu ki COB ten ki sigi na akizison y transmison di bens imovel atraves di konpra, venda ô arendamentu ku un valor superior a \$ 35.000.
- **Di akordu ku Kapitulu 30B**, nu stá obrigadu a konduzi un **prosesu konpetitivu abertu y justu** ki ta koloka tudu proponentis na pé di igualdadi, pidi informason ki ta permiti **konparason jerivel y signifikativu di ofertas** ku bazi na desizon skluzivamenti na kes informason ki pididu (kuzê ki nu ovi di komunidadadi).



About the Site

MAYOR'S OFFICE OF HOUSING



A street scene featuring a crosswalk with white stripes on a dark asphalt road. In the background, there is a chain-link fence topped with a stone wall, and a dense line of green trees. To the right, a portion of a two-story house with light-colored siding is visible. On the left, a traffic light pole holds a colorful flag with red, white, and blue geometric patterns. A pedestrian crossing signal with a red hand icon is on the right side of the sidewalk.

Acerca del emplazamiento

Enfòmasyon sou sit la



Sobri kel lokal

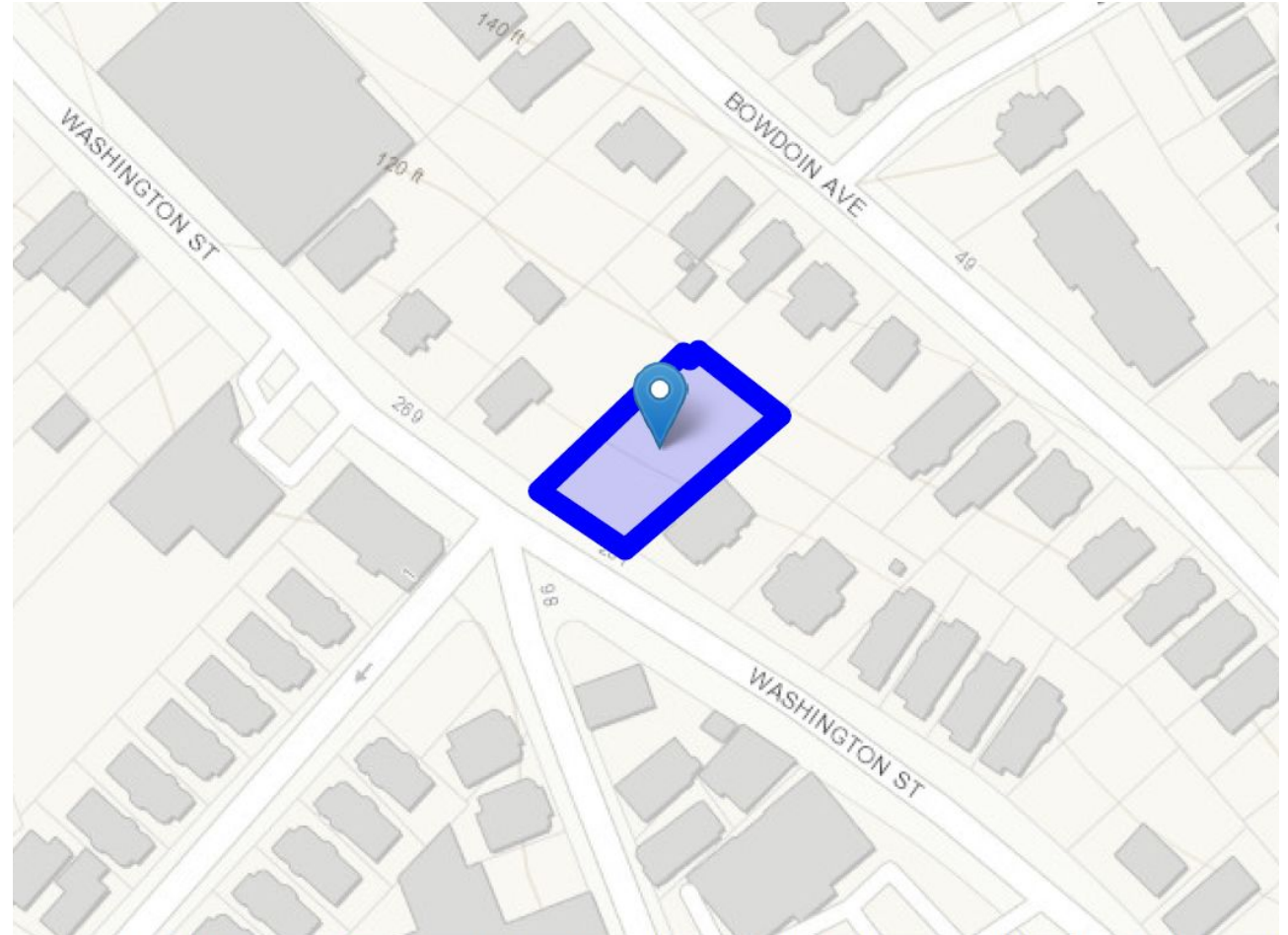
MAYOR'S OFFICE OF HOUSING



SITE DESCRIPTION AND MAP

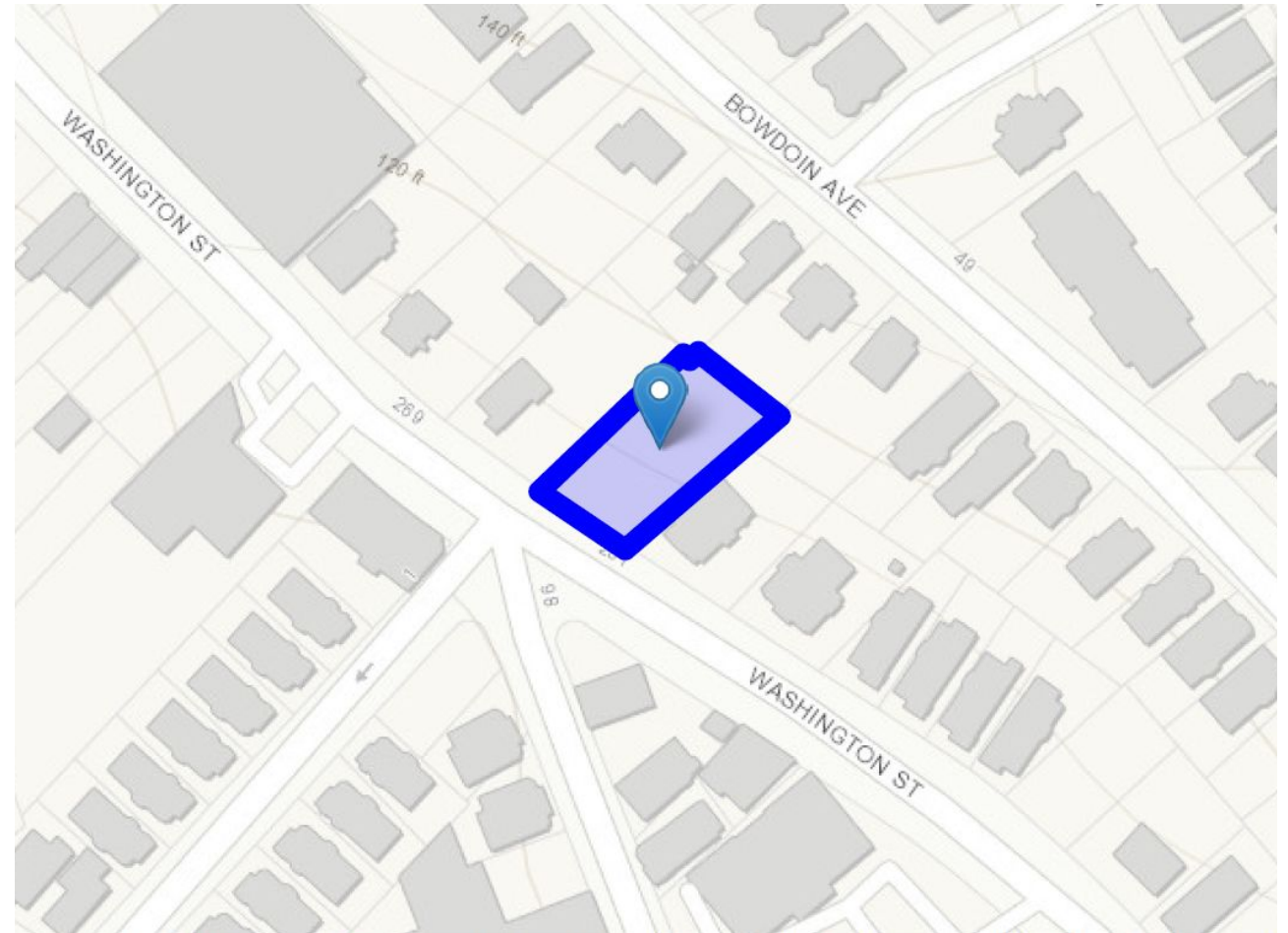


- **282-284 Washington Street, Dorchester**
- **Total Size: 9,920 sq ft**
- **1 parcel**



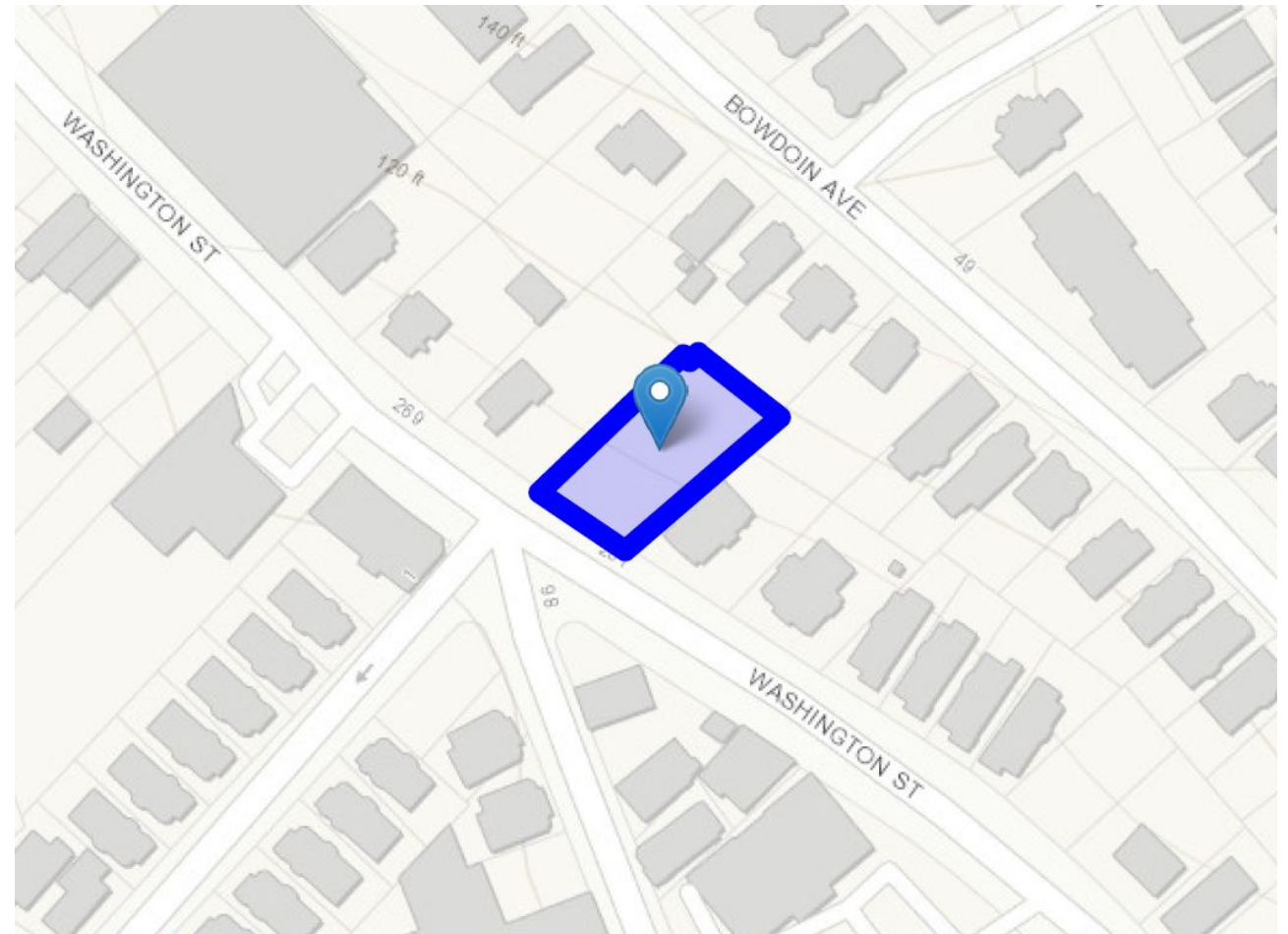
DESCRIPCIÓN Y MAPA DEL EMPLAZAMIENTO

- **282-284 Washington Street, Dorchester**
- **Tamaño total: 9.920 pies cuadrados**
- **1 parcela**



DESKRIPSYON SIT AK KAT

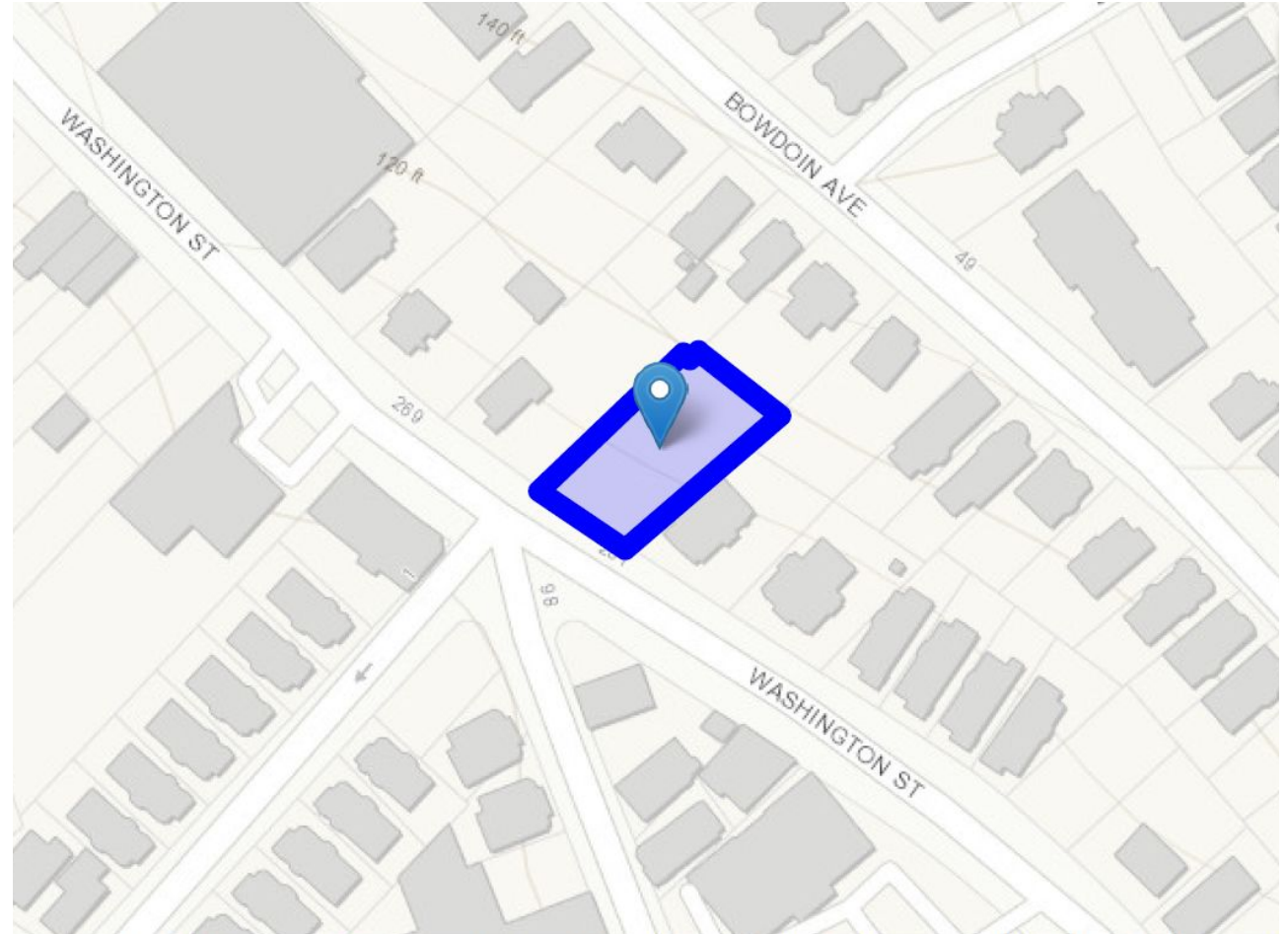
- 282-284 Washington Street, Dorchester
- Gwosè Total: 9,920 pye kare
- 1 pasèl



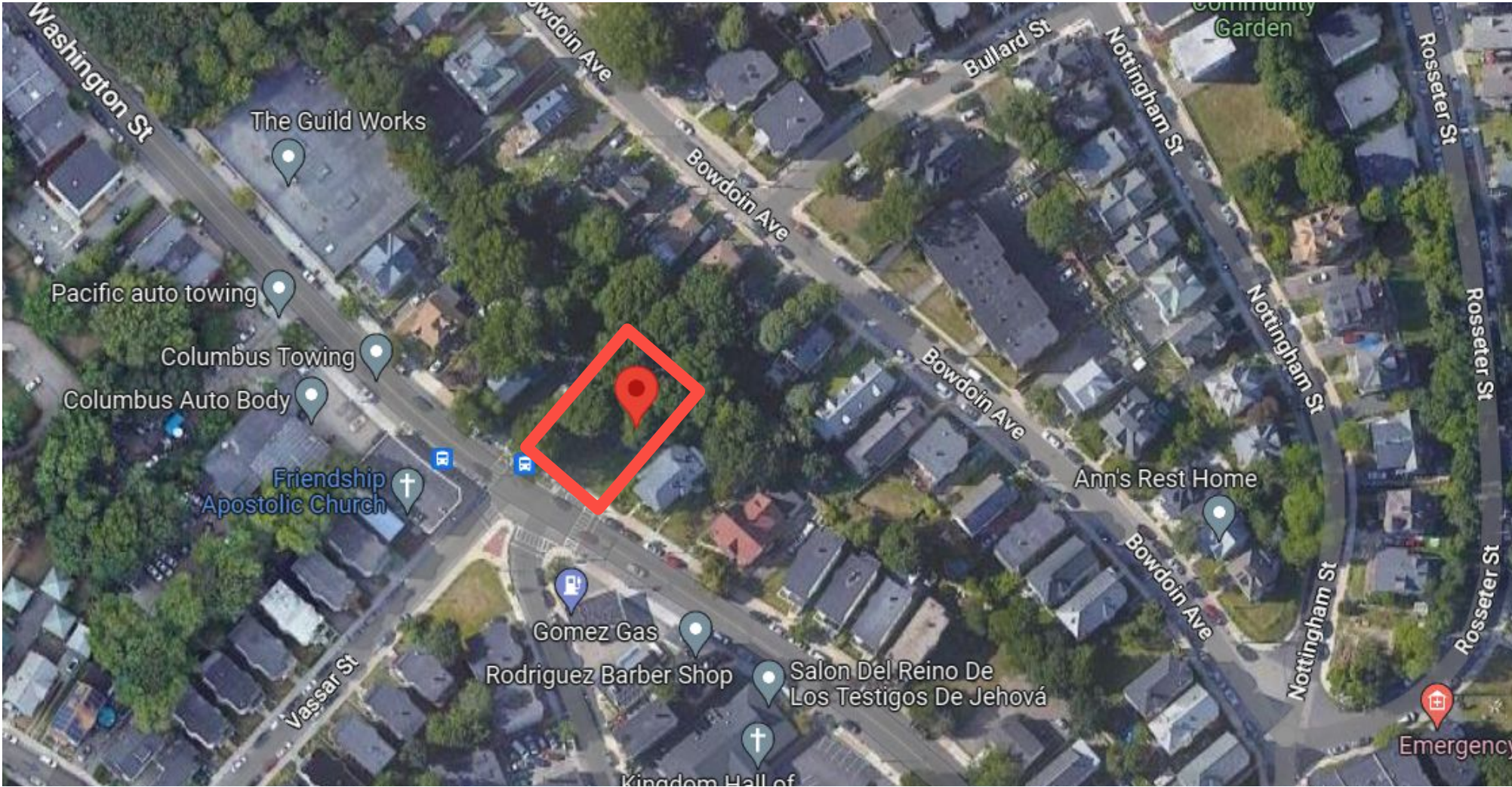
DESKRISON Y MAPA DI LOKAL



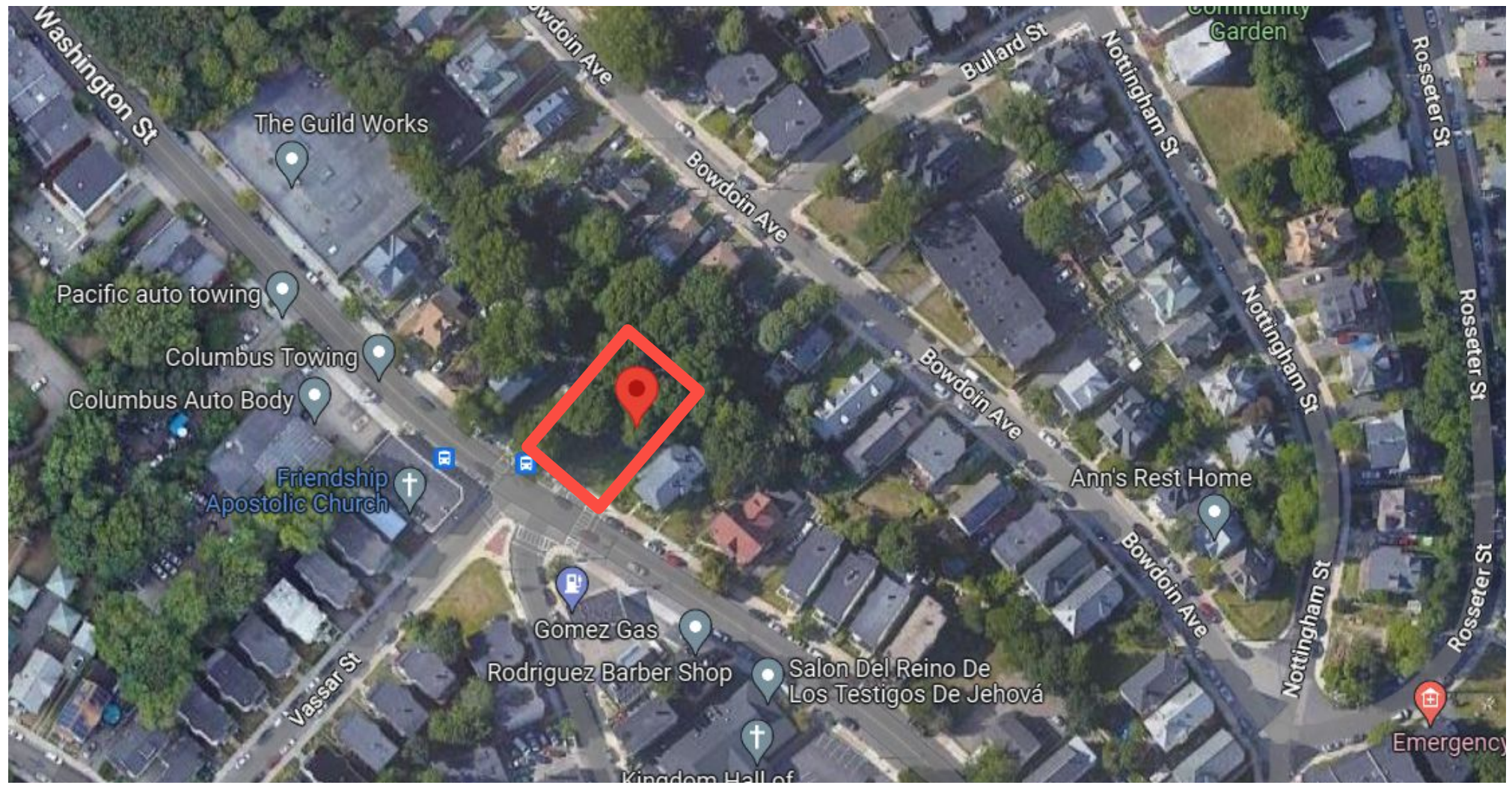
- **282-284 Washington Street**
- **Dimenson Total: 9.920 Pés² (921.5982 m²)**
- **1 parsela**



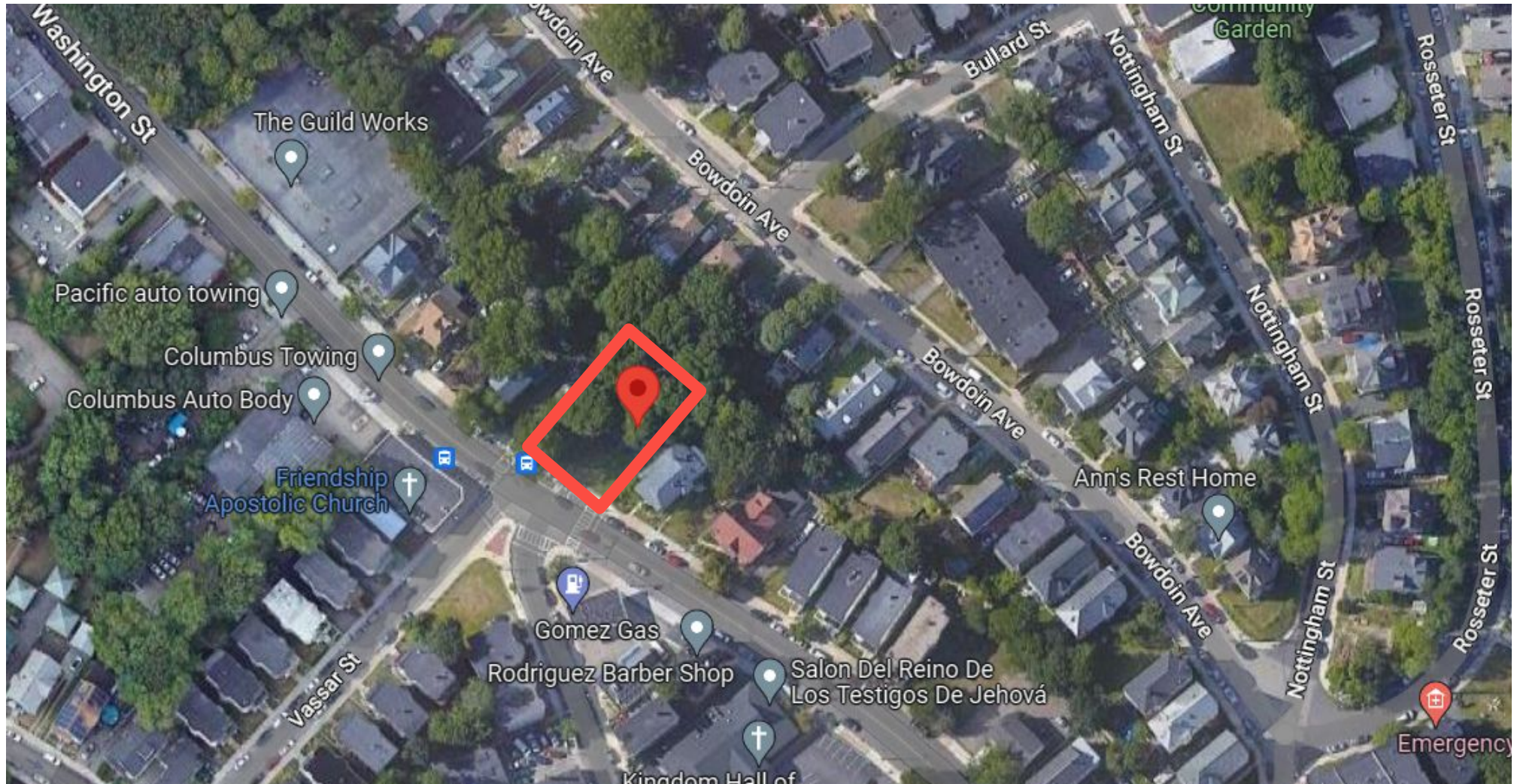
SATELLITE VIEW



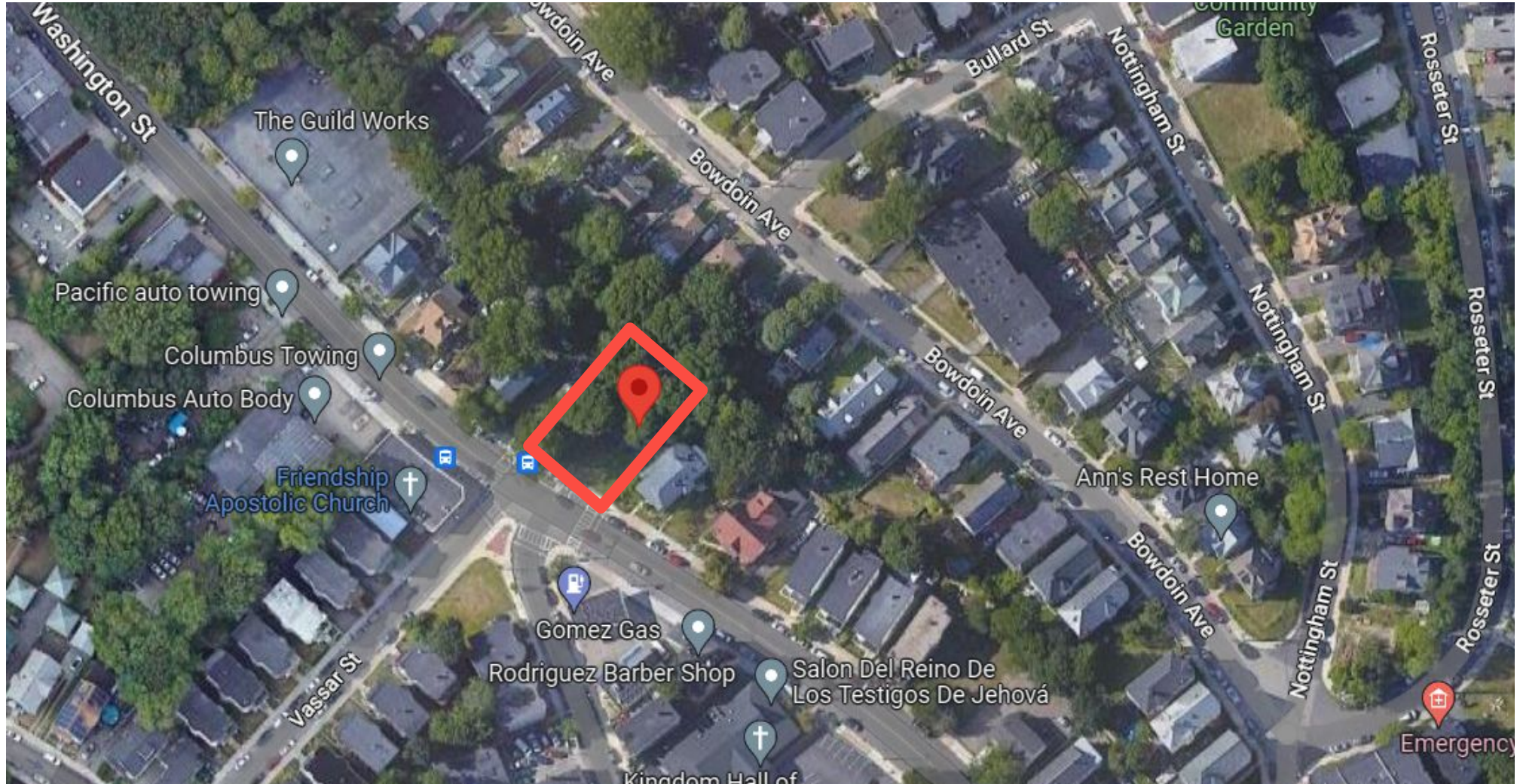
VISTA POR SATÉLITE



PANORAMA SATELIT



VISTA DI SATELITI



SITE PHOTOS



Views from Washington Street

FOTOS DEL EMPLAZAMIENTO



Vistas desde Washington Street

FOTO SIT



Foto apati Washington Street

FOTOGRAFIA DI LOKAL



Vista a partir di Washington Street



Discussion: Comments and Q+A

A photograph of a street intersection. In the foreground, a crosswalk with white stripes is visible on the asphalt. A concrete sidewalk runs along the edge of the road. Behind the sidewalk is a chain-link fence supported by a stone wall. In the background, there are large, leafy green trees and a portion of a house with a grey roof and light-colored siding. A traffic light pole with a red hand symbol is on the right, and another pole with a colorful flag is on the left.

Discusión: comentarios y preguntas y respuestas

A photograph of a street intersection. In the foreground, there is a crosswalk with white stripes on a dark asphalt road. To the left, a traffic light pole has a colorful flag (red, white, blue, and orange) attached to it. In the middle ground, a chain-link fence runs across the frame, with a stone wall and some greenery behind it. In the background, there are large, leafy green trees and a portion of a house with a grey roof and a satellite dish. The sky is clear and blue.

Diskisyon: Kòmantè ak Kesyon + Repons

A photograph of a street intersection. In the foreground, a crosswalk with white stripes is visible on the asphalt. To the left, a traffic light pole holds a traffic light and a colorful flag. A sidewalk runs along the street. In the middle ground, a chain-link fence runs across the frame, with a stone wall and some greenery behind it. The background is filled with large, leafy green trees. On the right side, a portion of a house with a grey roof and light-colored siding is visible. A hand signal light is also present on the right side of the sidewalk.

Diskusjon: Komentarius y Q+A

PROPOSED FUTURE USE

Open Space

- Permanently protected as open space by deed restriction
- Preservation of existing healthy, mature trees
- Urban farming with regular use by farmers on site

USO FUTURO PROPUESTO

Espacio abierto

- Protegido permanentemente como espacio abierto mediante restricción en la escritura de título de propiedad
- Preservación de los árboles maduros y sanos existentes
- Agricultura urbana con uso normal por parte de agricultores en el sitio

ITILIZASYON KI PWOPPOZE NAN LAVNI

Espas Ouvè

- Pwoteje an pèmanans kòm espas ouvè pa restriksyon papyè kay
- Konsèvasyon pyebwa ki gen matirite ki an sante ki egziste deja
- Agrikilti iben ak itilizasyon regilye pa kiltivatè sou sit

PROPOSTA DI UTILIZASON FUTURU

Spasu Abertu

- Permanentimenti protejidu komu spasu abertu atraves di restrison na skritura
- Prezervason di arvoris existentis saudavel y kresidu
- Kinta urbanu ku utilizason regular pur agrikultoris na lokal

WE WANT TO HEAR FROM YOU!

Open Space

- Do you have any questions or concerns regarding the possible permanent use of this site for **urban agriculture**?
- Do you want to see this space preserved as open space into the future?
- Is there anything you would NOT want to see on this site?
- Any other comments, questions or concerns?

¡QUEREMOS CONOCER SU OPINIÓN!

Espacio abierto



- ¿Tiene alguna pregunta o inquietud sobre el posible uso permanente de este lugar para la **agricultura urbana**?
- ¿Desea que este lugar se conserve como espacio abierto en el futuro?
- ¿Hay algo que NO desearía ver en este emplazamiento?
- ¿Algún otro comentario, pregunta o inquietud?

NOU VLE TANDE W!

Espas Ouvè



- Èske w gen nenpòt kesyon oswa enkyetid konsènan posib itilizasyon pèmanan sit sa a pou **agrikilti iben**?
- Èske ou vle konsève espas sa a kòm yon espas ouvè nan lavni?
- Èske gen yon bagay ou PA vle wè sou sit sa a?
- Èske ou gen nenpòt lòt kòmantè, kesyon oswa enkyetid?

NU KRE SABI BU OPINION!

Spasu Abertu

- Bu ten algun duvida ô preokupaSon en relason a posivel utilizason permanenti di es lokal li pa agrikultura urbanu?
- Bu kre odja es spasu prezervadu komu spasu abertu na futuru?
- Ta ezisti algun kuza ki bu KA ta gostaba di odja na es lokal li?
- Otus komentariu, pergunta ô preokupason?



Next Steps

MAYOR'S OFFICE OF HOUSING



A street scene featuring a crosswalk with white stripes on a dark asphalt road. A concrete sidewalk runs along the edge of the road. Behind the sidewalk is a chain-link fence supported by a low stone wall. In the background, there are lush green trees and a portion of a house with yellow siding and a grey roof. A traffic light pole with a colorful flag is visible on the left, and a pedestrian crossing signal with a red hand icon is on the right.

Próximos pasos

MAYOR'S OFFICE OF HOUSING



Pwochen Etap yo

MAYOR'S OFFICE OF HOUSING





Prósimus Pasu

MAYOR'S OFFICE OF HOUSING



CONTACT INFORMATION

- **Theresa Strachila**
 - Program Manager, GrowBoston
 - theresa.strachila@boston.gov
 - 617-635-0267
- **Project website:**
 - bit.ly/282-284-washington



INFORMACIÓN DE CONTACTO

- **Theresa Strachila**
 - *Director de programa, GrowBoston*
 - theresa.strachila@boston.gov
 - 617-635-0267
- **Sitio web del proyecto:**
 - bit.ly/282-284-washington



ENFÓMASYON KONTAK

- **Theresa Strachila**
 - Kowòdonatè Pwogram, GrowBoston
 - theresa.strachila@boston.gov
 - 617-635-0267
- **Sit entènèt Pwojè:**
 - bit.ly/282-284-washington



INFORMASON DI KONTAKTU

- **Theresa Strachila**
 - *Jestora di Programa,*
GrowBoston
 - theresa.strachila@boston.gov
 - 617-635-0267
- **Pájina di internet di projetu:**
 - [*bit.ly/282-284-washington*](https://bit.ly/282-284-washington)

