



**30-36 Mildred Avenue
Community Meeting
January 6, 2020**

*Department of
Neighborhood
Development*



City of Boston
Mayor Martin J. Walsh

DND and the Neighborhoods

Our Mission:

We work to build strong, inclusive communities with access to stable and affordable housing for all.

We work with communities to improve Boston's neighborhoods through investing public resources. Our main jobs are to create housing options, support tenants, foster homeownership, end homelessness, and manage the City's real estate.



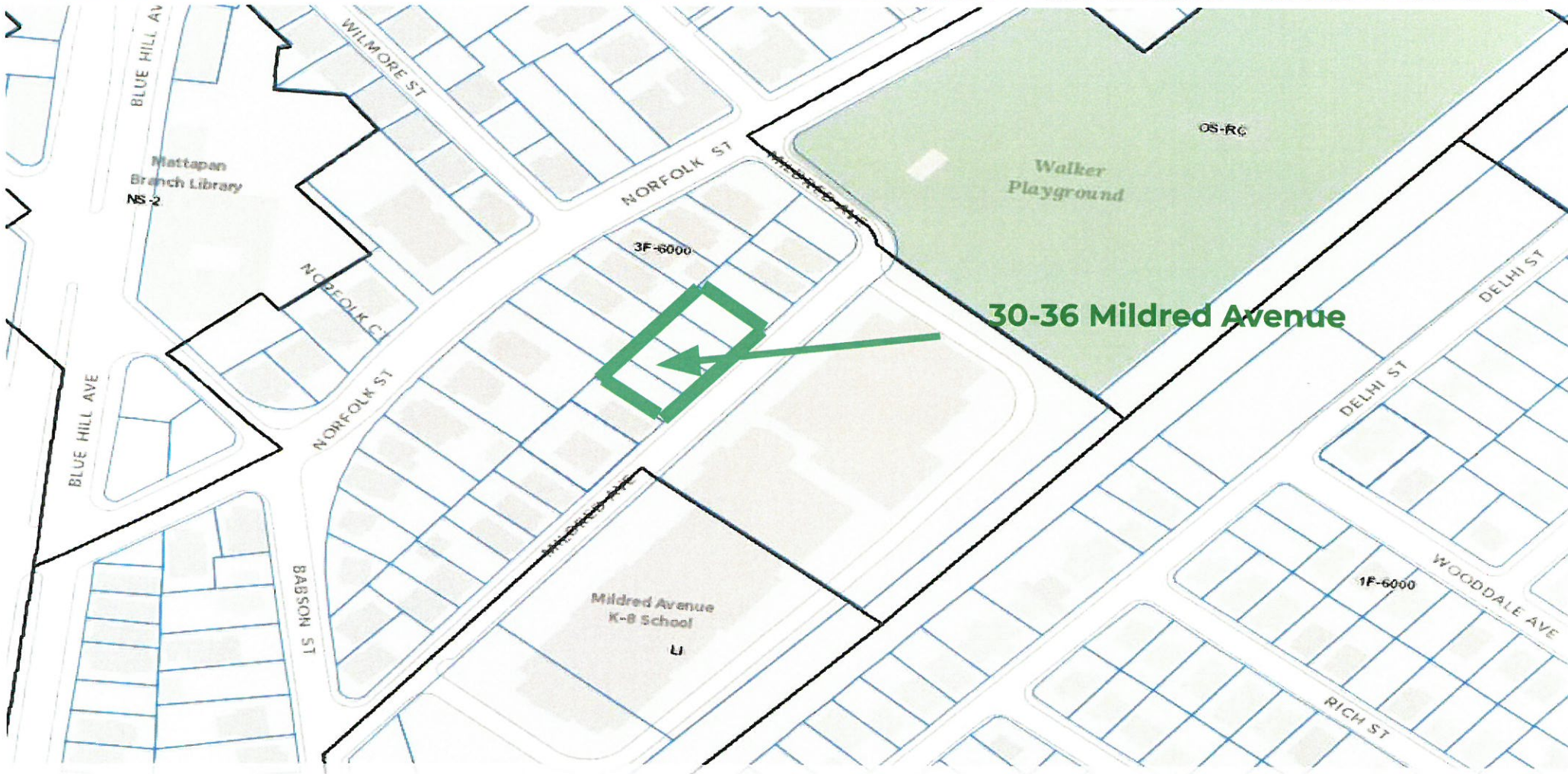
30-36 Mildred Avenue

Site Context

30-36 Mildred Avenue Aerial View



30-36 Mildred Avenue: 4 Parcels; 14,133 sf



Option 1 Site Context: 2-Three unit buildings; 18 community garden plots



Option 1 Similar Site Context: 2- Three unit buildings; 18 community garden plots



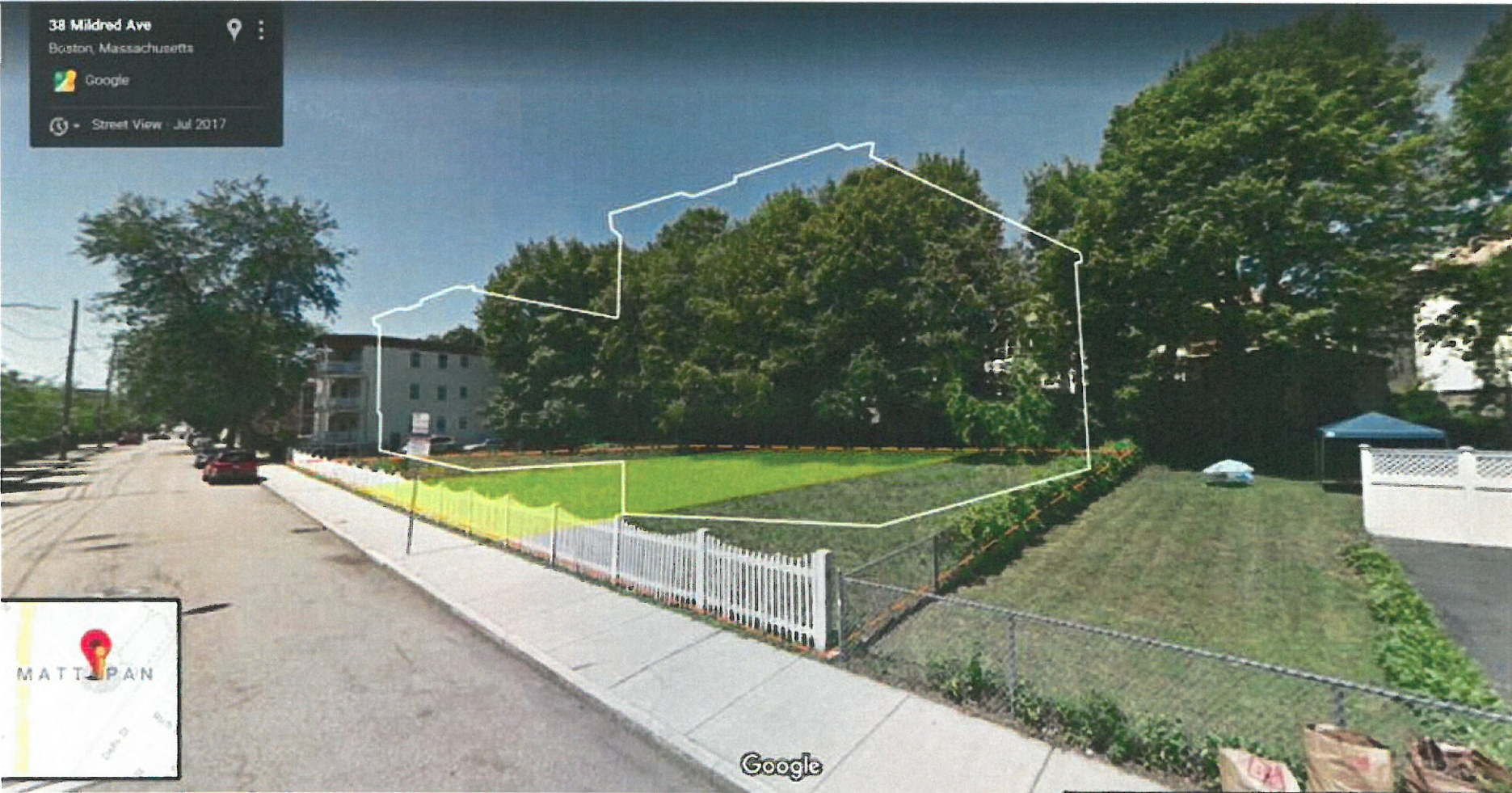
Option 1 Similar Site Context: 2- Three unit buildings; 18 community garden plots



Option 2 Site Context: 2 Four unit buildings; 18 community plots



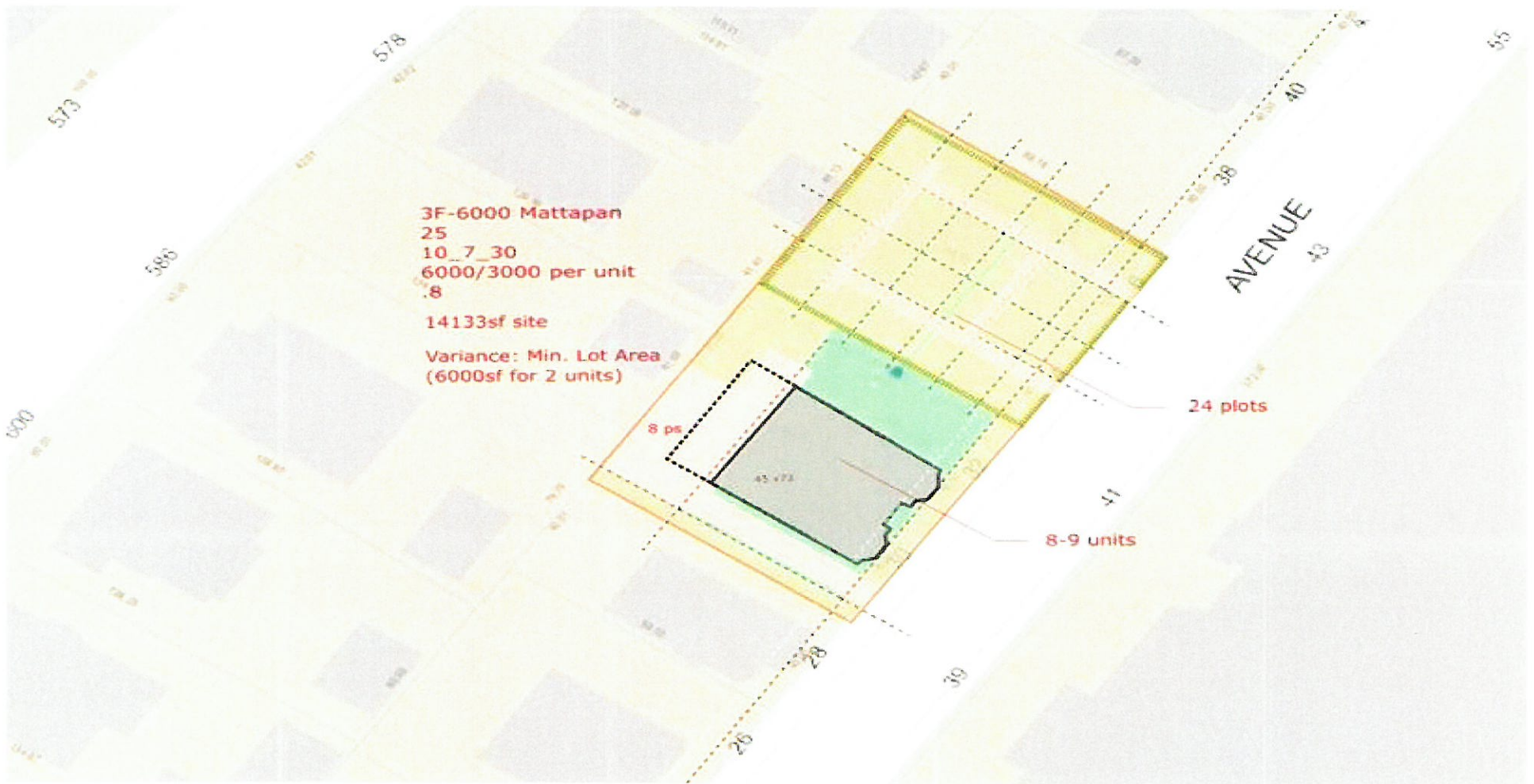
Option 2 Similar Site Context: 2 Four unit buildings; 18 community plots



Option 2 Similar Site Context: 2 Four unit buildings; 18 community plots



Option 3 Site Context: 1 Eight to Nine unit building; 24 community plots



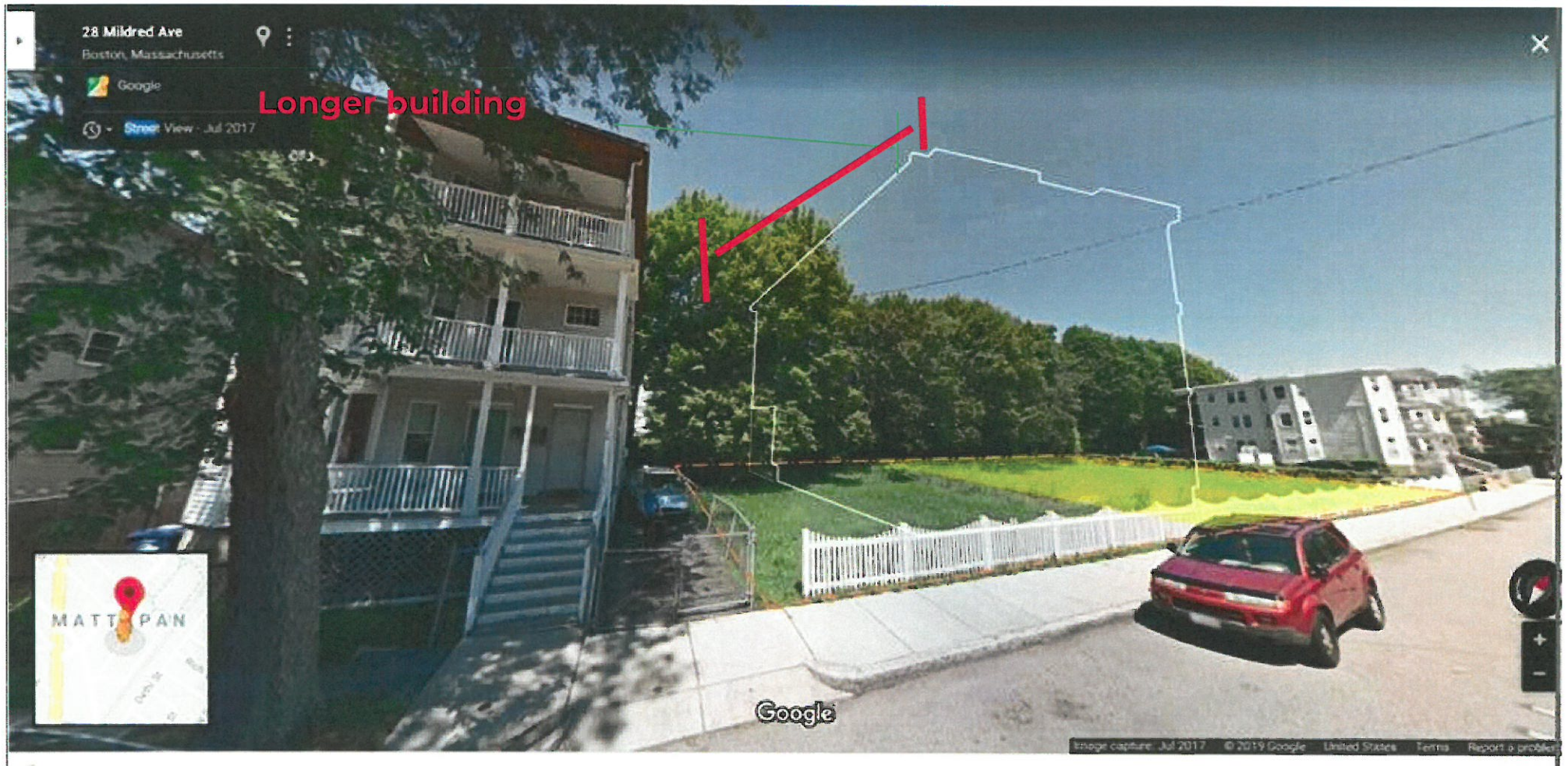
Option 3 Similar Site Context: 1 Eight to Nine unit building; 24 community plots



Option 3 Similar Site Context: 1 Eight to Nine unit building; 24 community plots



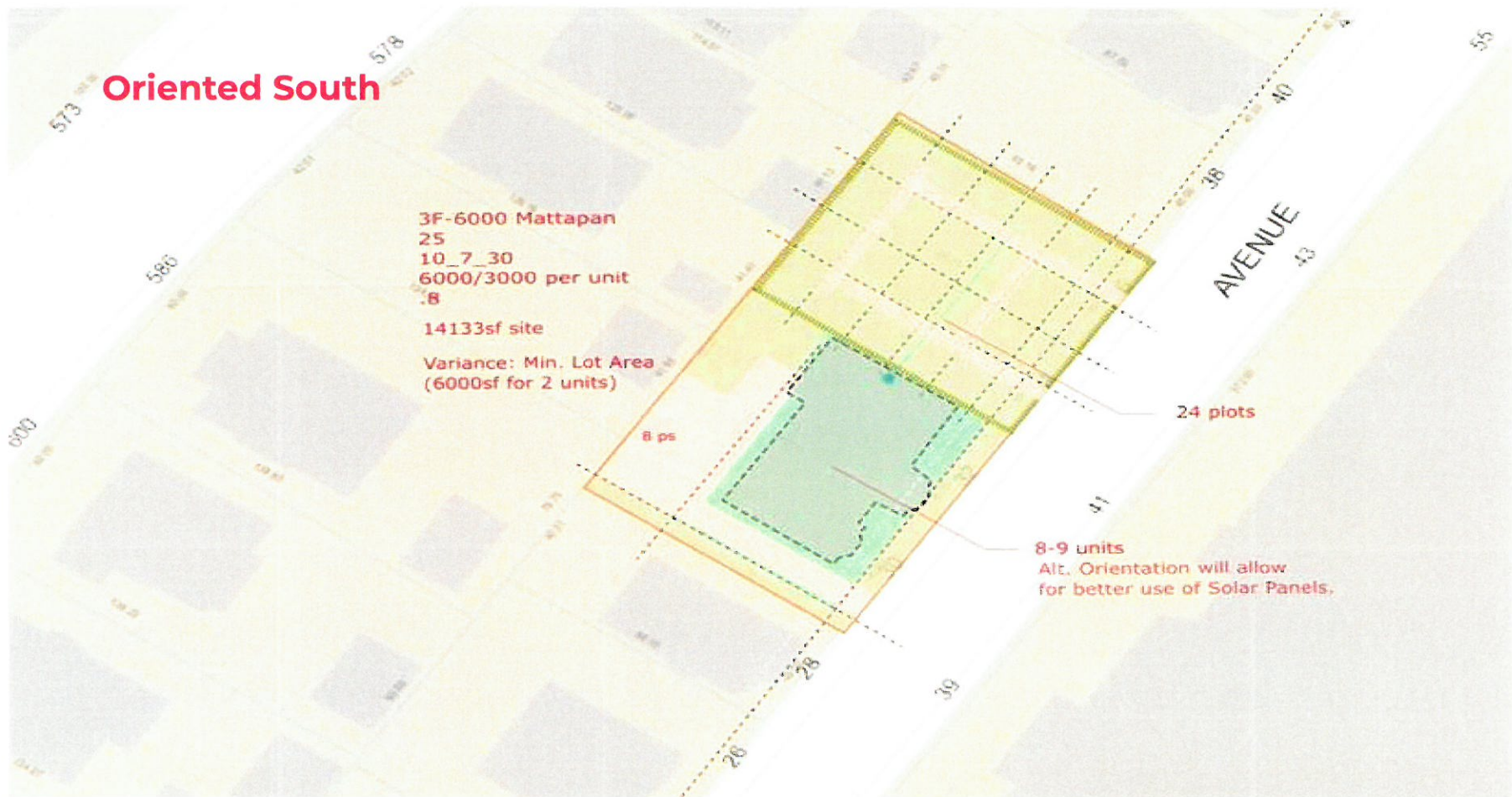
Option 3 Similar Site Context: 1 Eight to Nine unit building; 24 community plots



Option 3 Similar Site Context: 1 Eight to Nine unit building; 24 community plots



Option 3 Similar Site Context: 1 Eight to Nine unit building; 24 community plots



30-36 Mildred Avenue

FOUR PARCELS, 3 SITE OPTIONS

OPTION 1:

- 2 Three unit buildings
- 18 community garden plots
- community garden plots on one side of buildings

OPTION 2

- 2 Four unit buildings
- 18 community garden plots
- community garden in between the buildings

OPTION 3

- 1 Eight to Nine unit building
- Longer building; Oriented south
- 24 community garden plots

Types of Housing

- **Rental Units**
- **Home Ownership/ Condos**
- **Market Rate**
- **Mixed Rate**
 $\frac{1}{3}$ Market rate, $\frac{1}{3}$ Middle
(100% median income) & $\frac{1}{3}$ Moderate (80% median income)
or any other variation

- **Middle (100%)**

Household size	Income limit
1	\$75,450
2	\$86,250
3	\$97,000
4	\$107,800
5	\$116,400
6	\$125,050

- **Moderate/Affordable (80%)**

Household size	Income limit
1	\$60,350
2	\$69,000
3	\$77,600
4	\$86,250
5	\$93,150
6	\$100,050



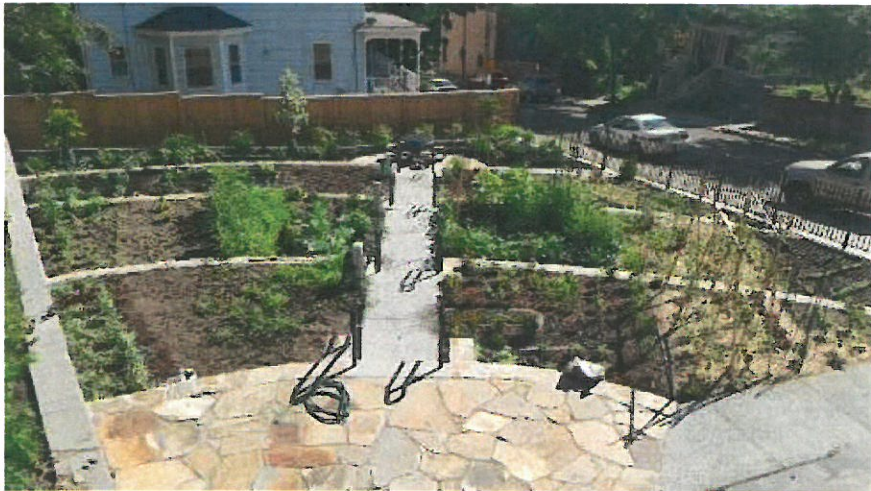
30-36 Mildred Avenue

What is the
Grassroots
Program?

What is the Grassroots Program?

- Supports the development of community gardens & other open spaces
- Provides grant funds, City-owned land, and technical assistance to neighborhood groups and nonprofits

Windermere Road Garden, Dorchester



Eastie Farm, East Boston



WE WANT TO HEAR FROM YOU!

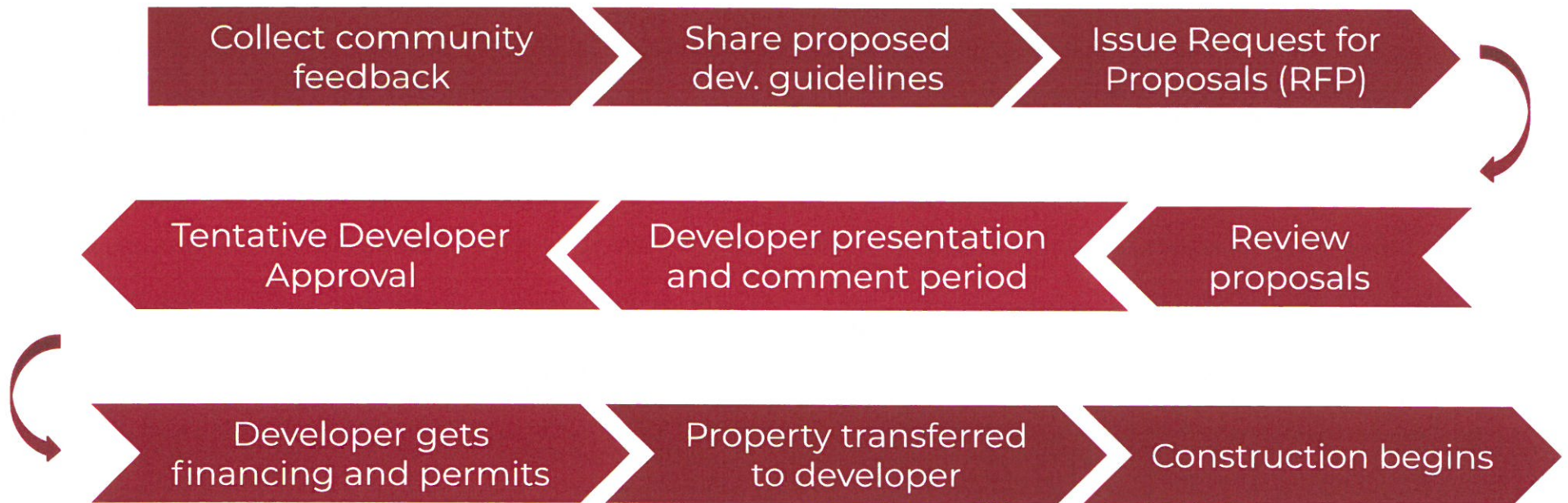
- **What do you want to see on these three sites?**
- **What don't you want to see?**
- **Any other comments, questions, or concerns?**



30-36 Mildred Avenue

Next Steps

Next Steps





THANK YOU!

Star Laws

(617) 635-0110 / Star.Laws@boston.gov

<https://buildinghousing.boston.gov/project/30-36-mildred-avenue-d83bb>