

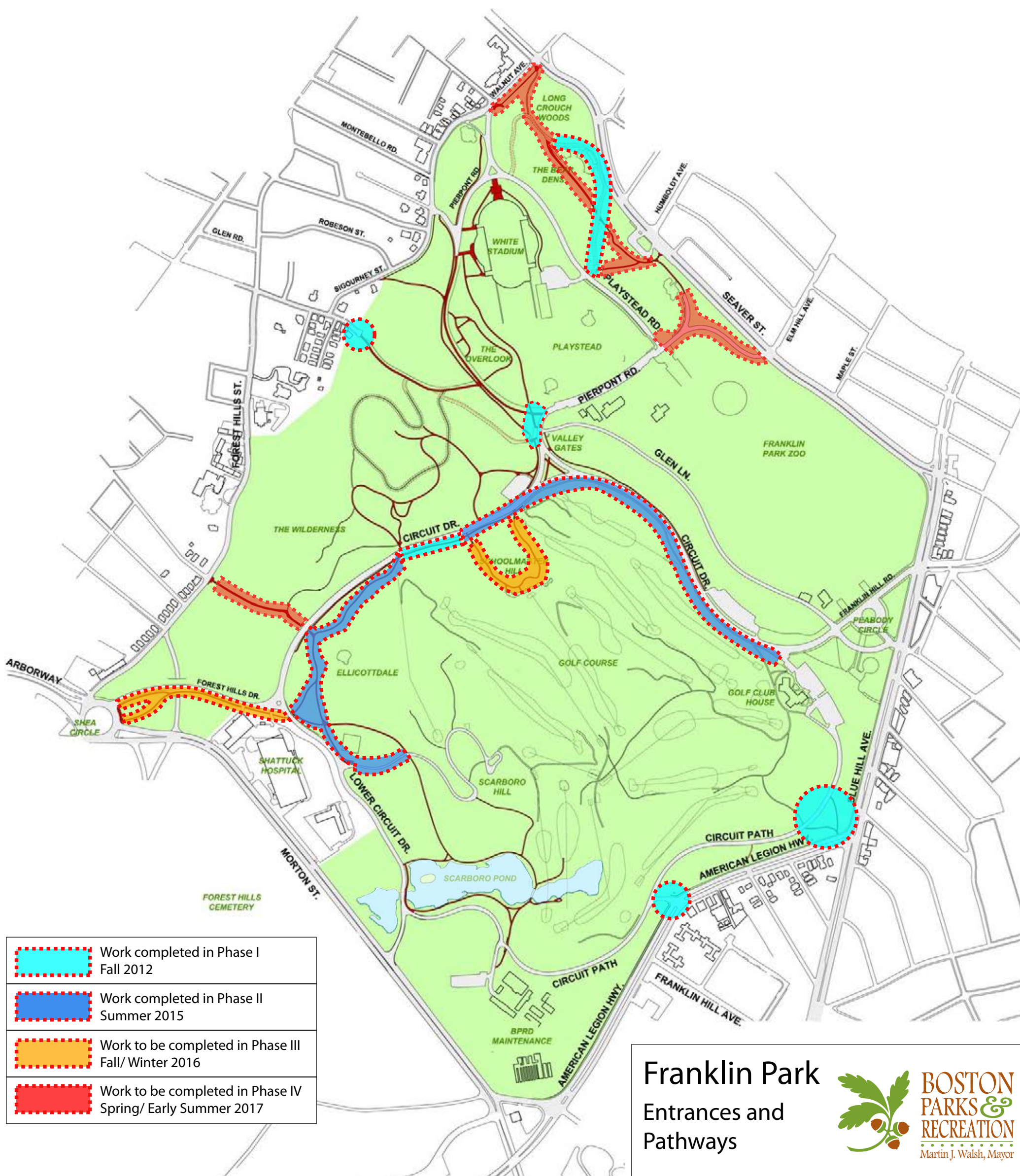


**IMPROVEMENTS TO FRANKLIN PARK PATHWAYS, LOWER  
CIRCUIT DRIVE AND SCARBORO POND AREA  
ROXBURY, BOSTON**

**Community Meeting #1**  
January 19, 2017



**kzla**



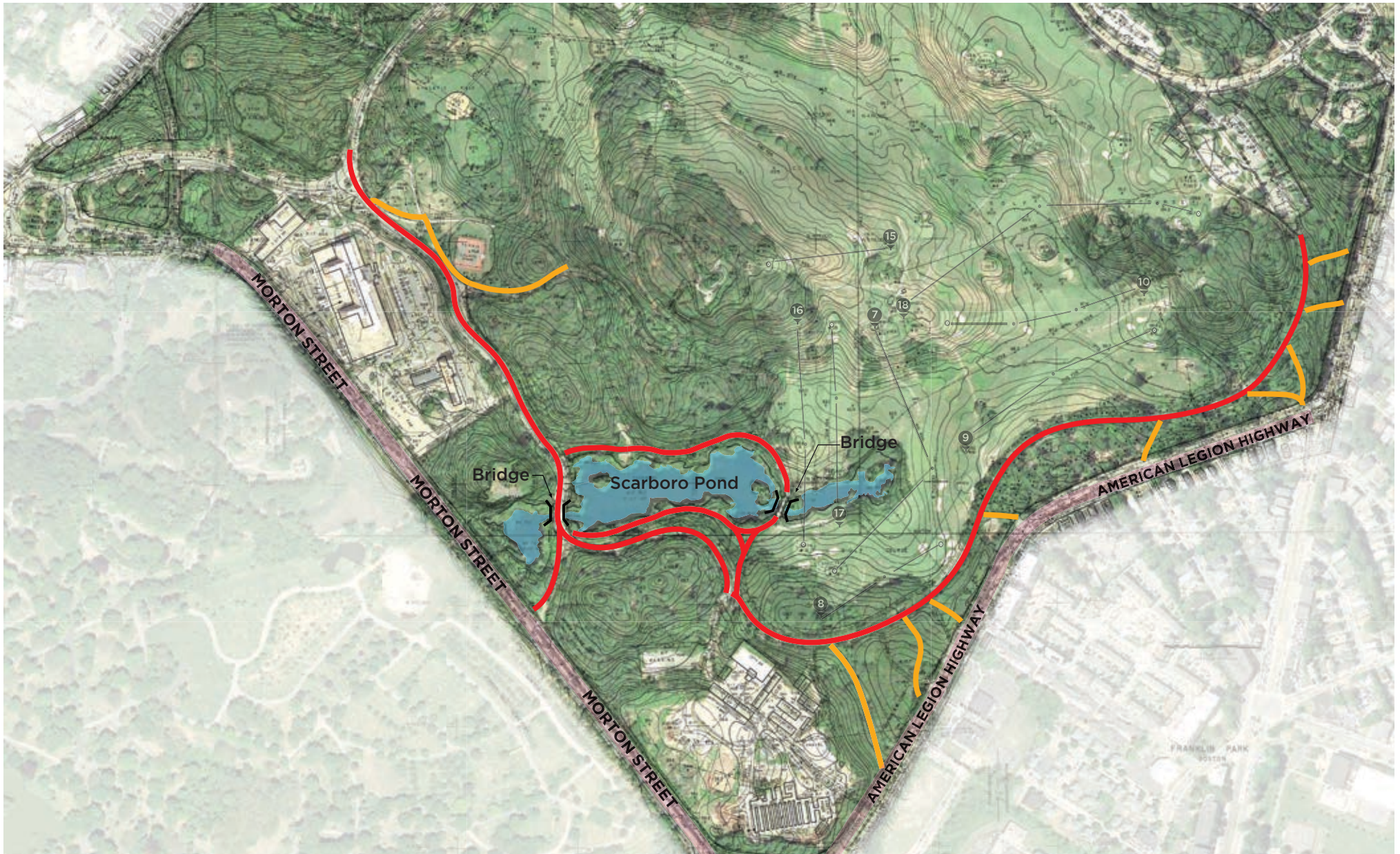
- Work completed in Phase I  
Fall 2012
- Work completed in Phase II  
Summer 2015
- Work to be completed in Phase III  
Fall/ Winter 2016
- Work to be completed in Phase IV  
Spring/ Early Summer 2017

## Franklin Park

Entrances and Pathways



**BOSTON  
PARKS &  
RECREATION**  
Martin J. Walsh, Mayor



## Project Scope



Olmsted Lithograph 1885



## Olmsted Lithograph and Existing Conditions



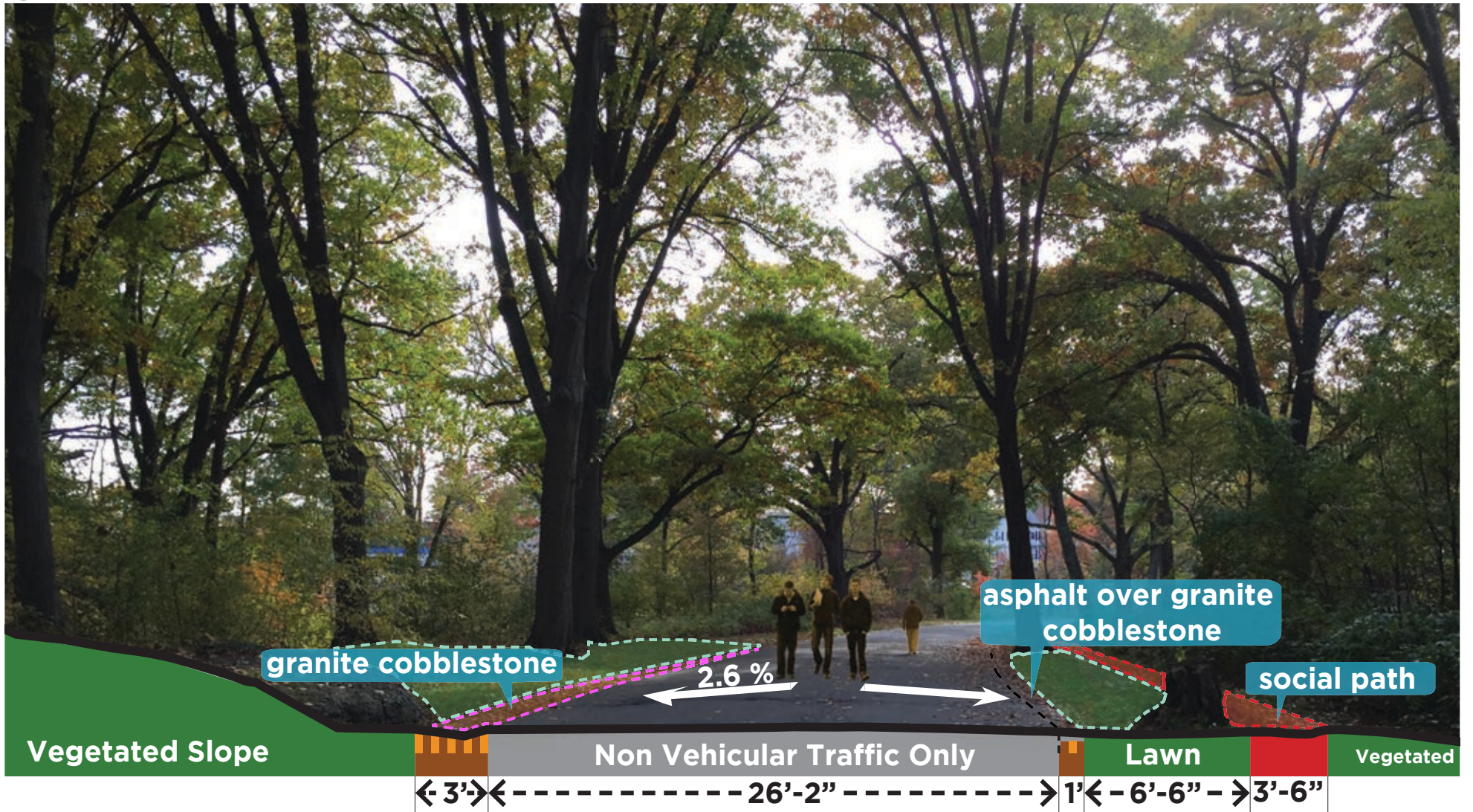
BOSTON  
PARKS AND  
RECREATION

kzla



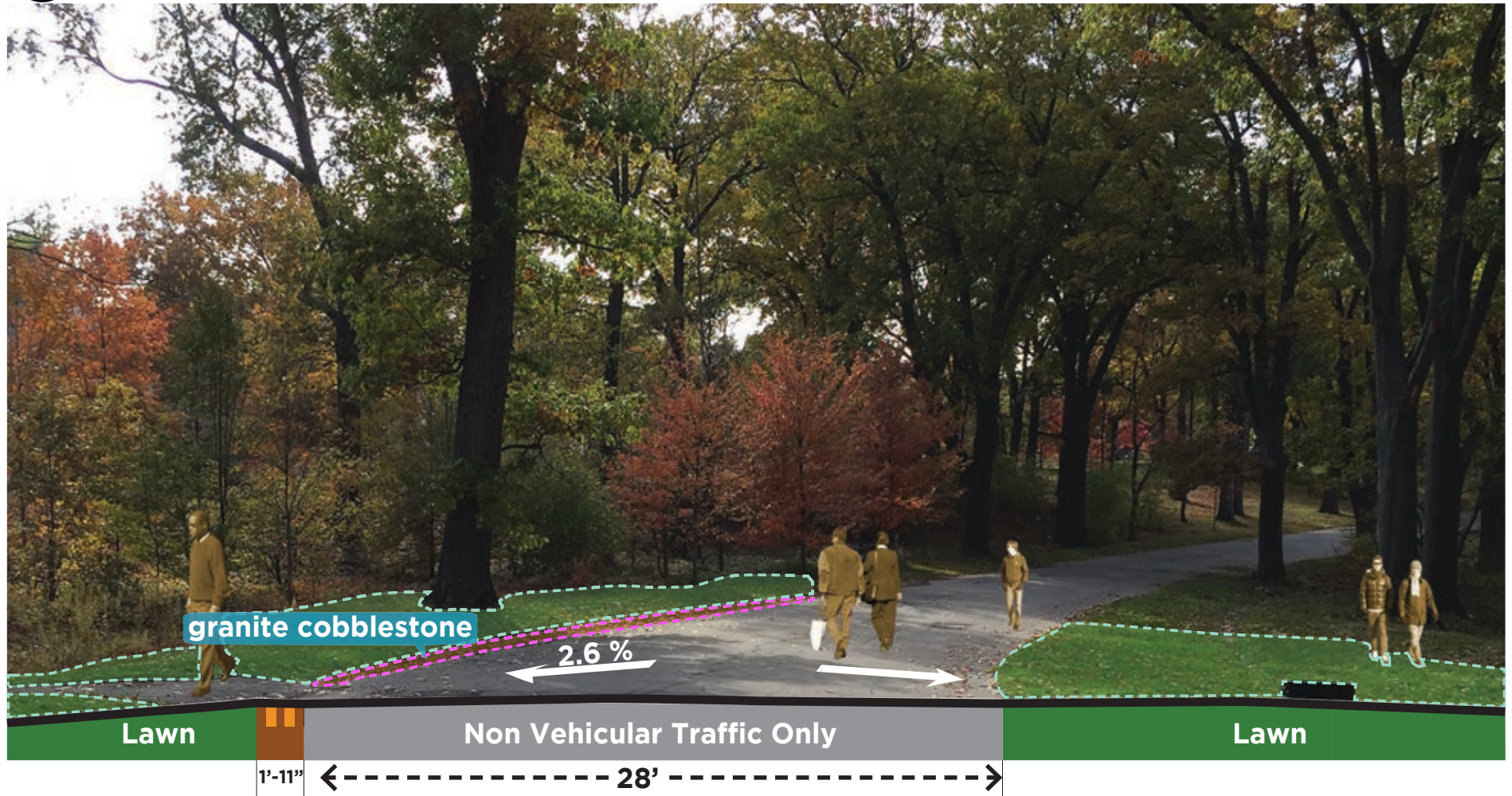
## Lower Circuit Drive Width Study

1



## Road Width Study, Existing Conditions

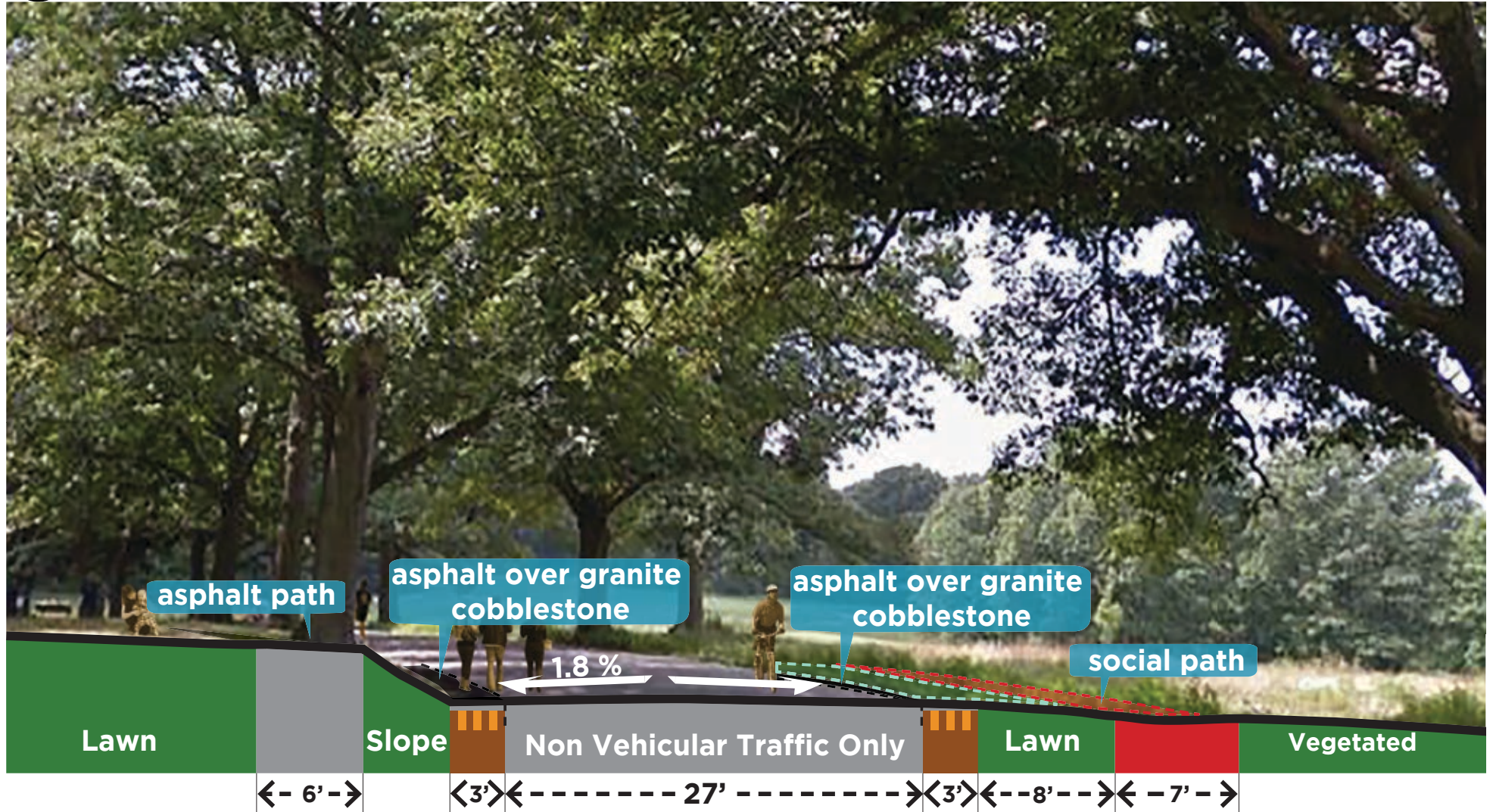
2



## Road Width Study, Existing Conditions



3



# Road Width Study, Existing Conditions

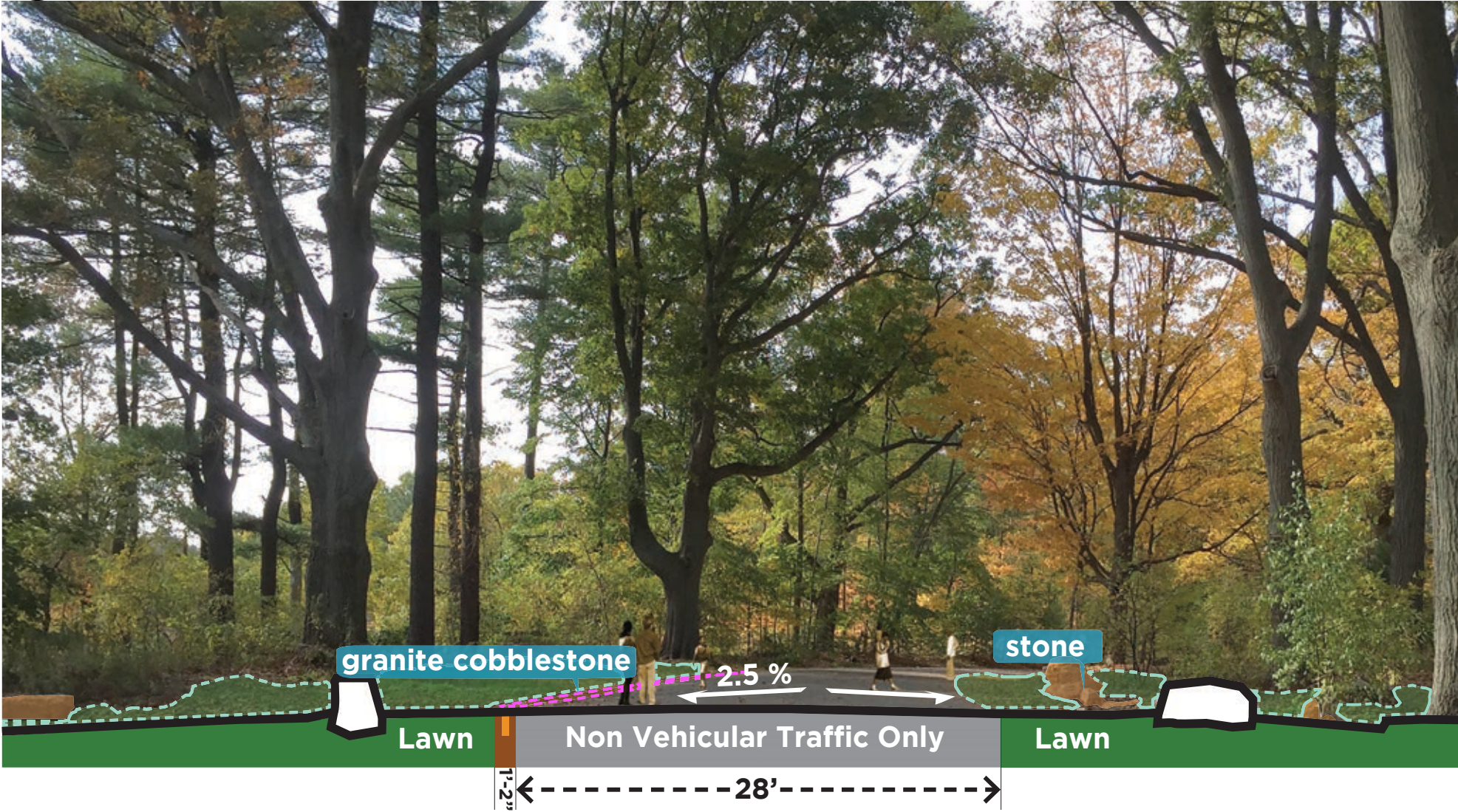
4



# Road Width Study, Existing Conditions



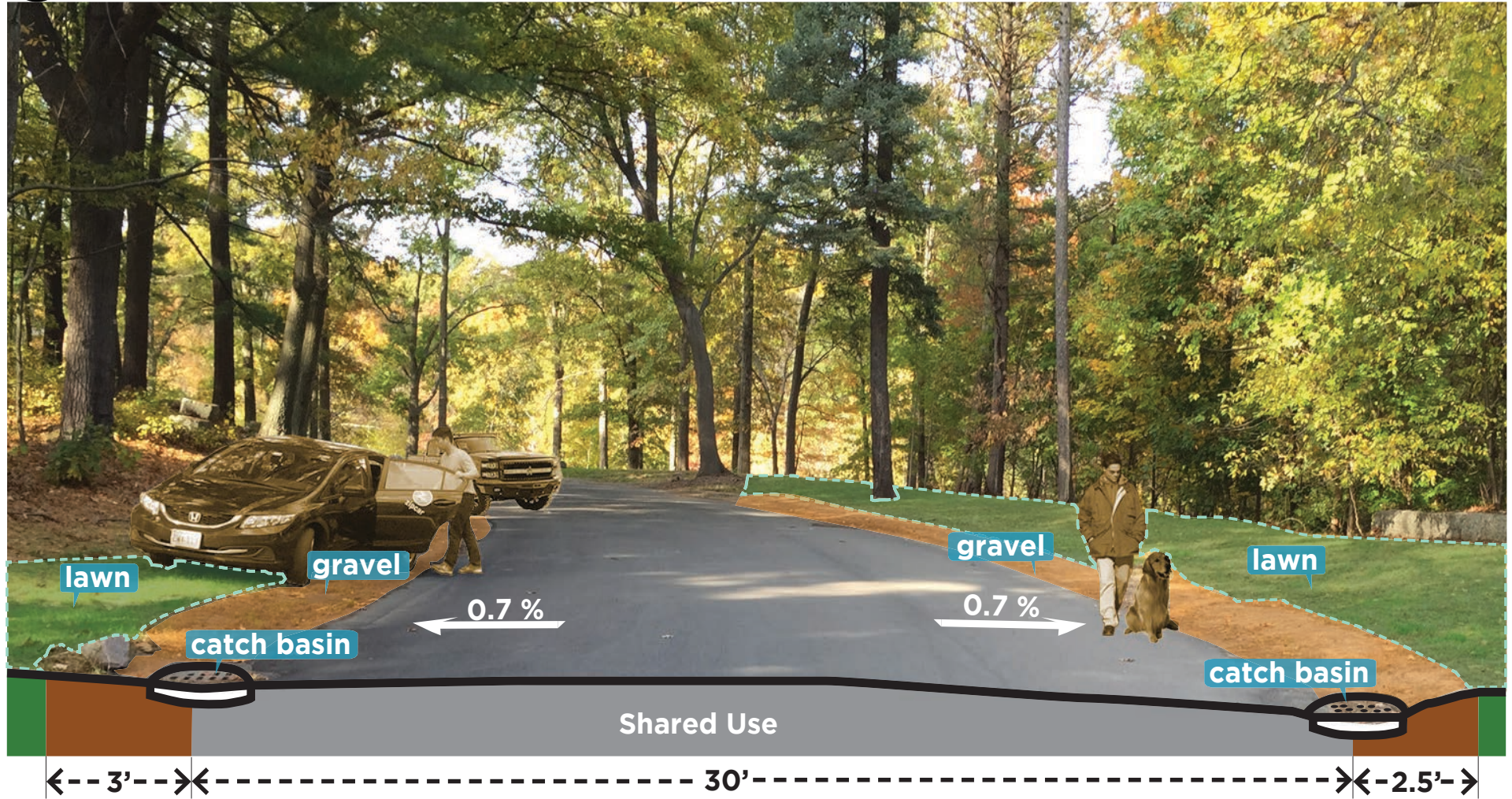
5



Road Width Study, Existing Conditions

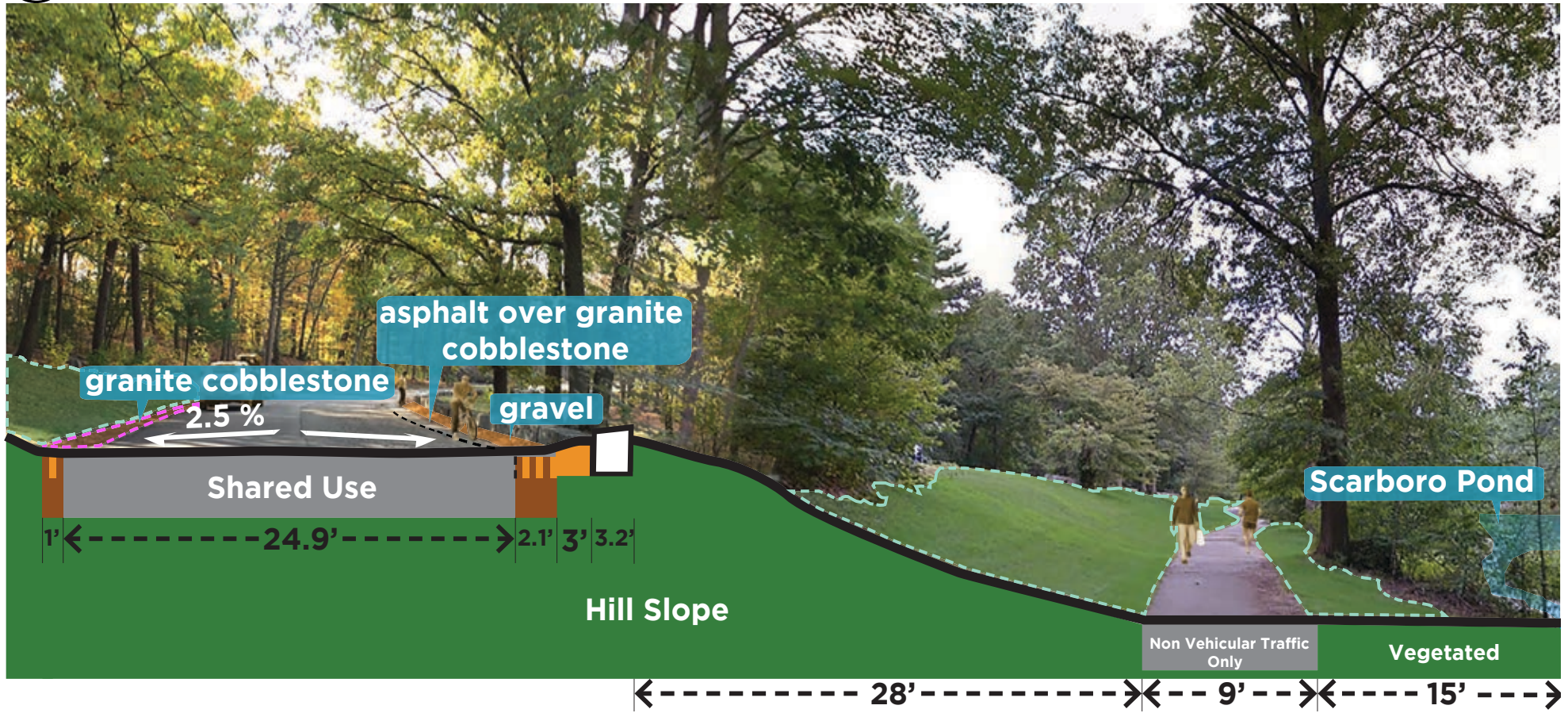


6



## Road Width Study, Existing Conditions

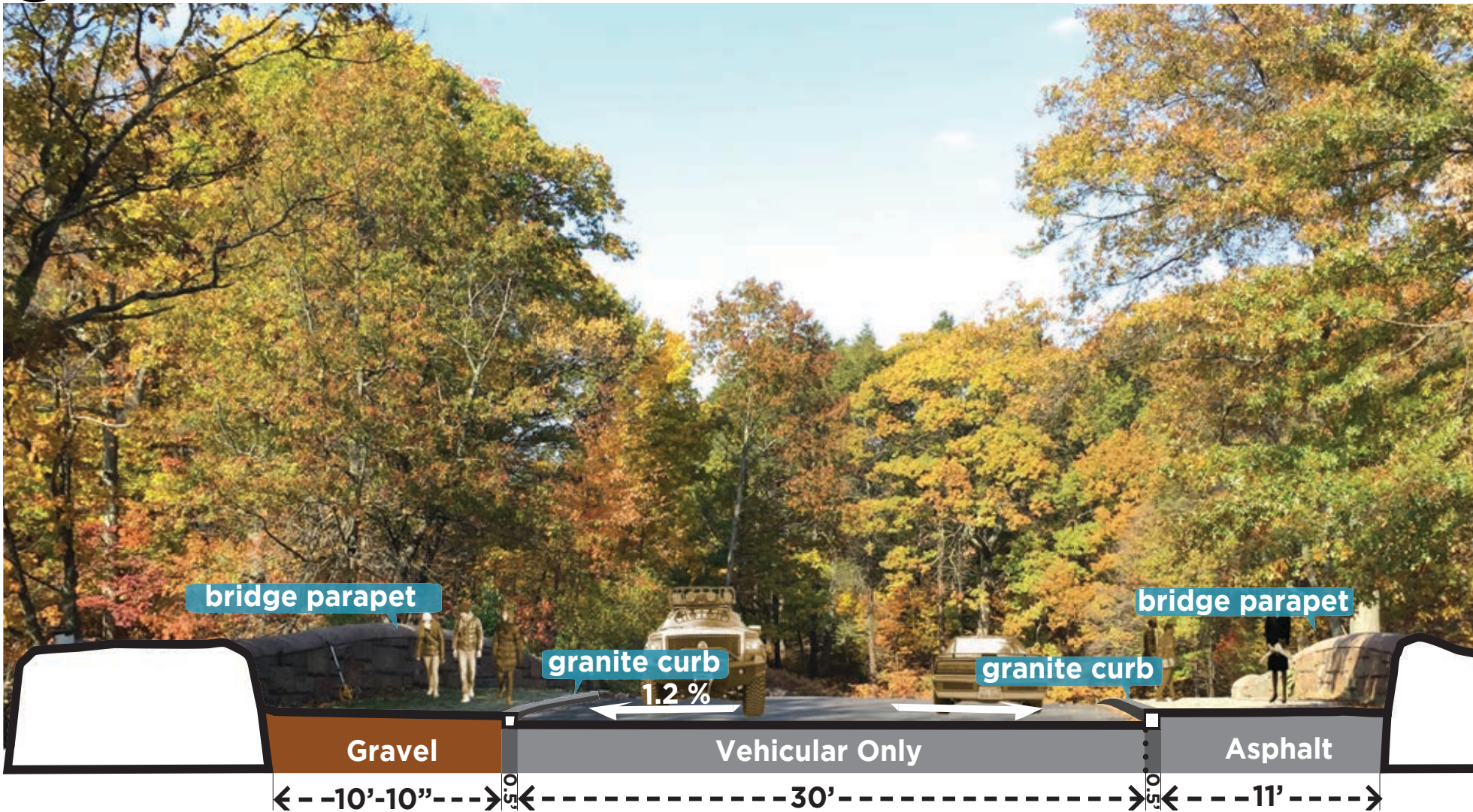
7



# Road Width Study, Existing Conditions

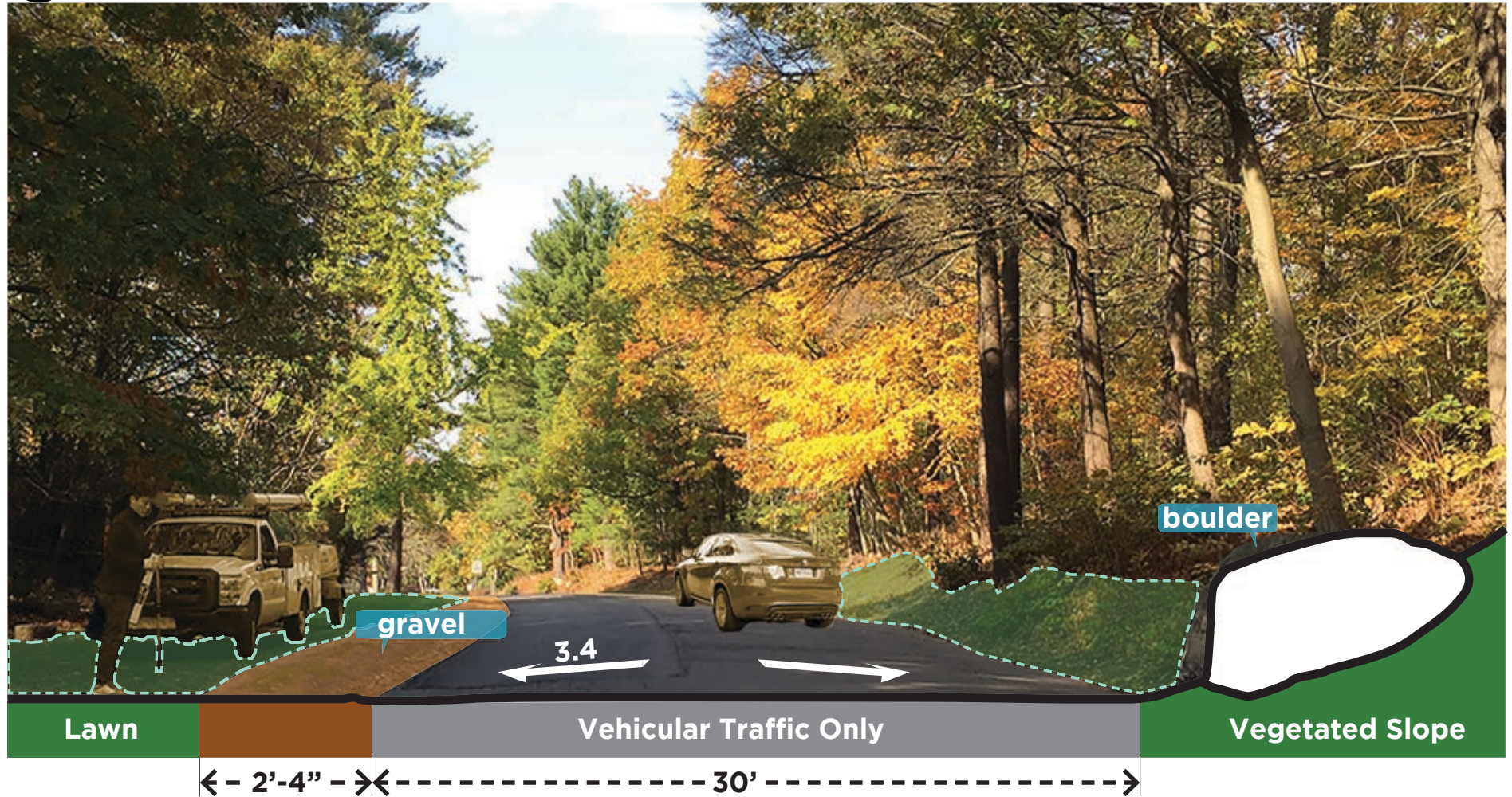


Road Width Study, Existing Conditions



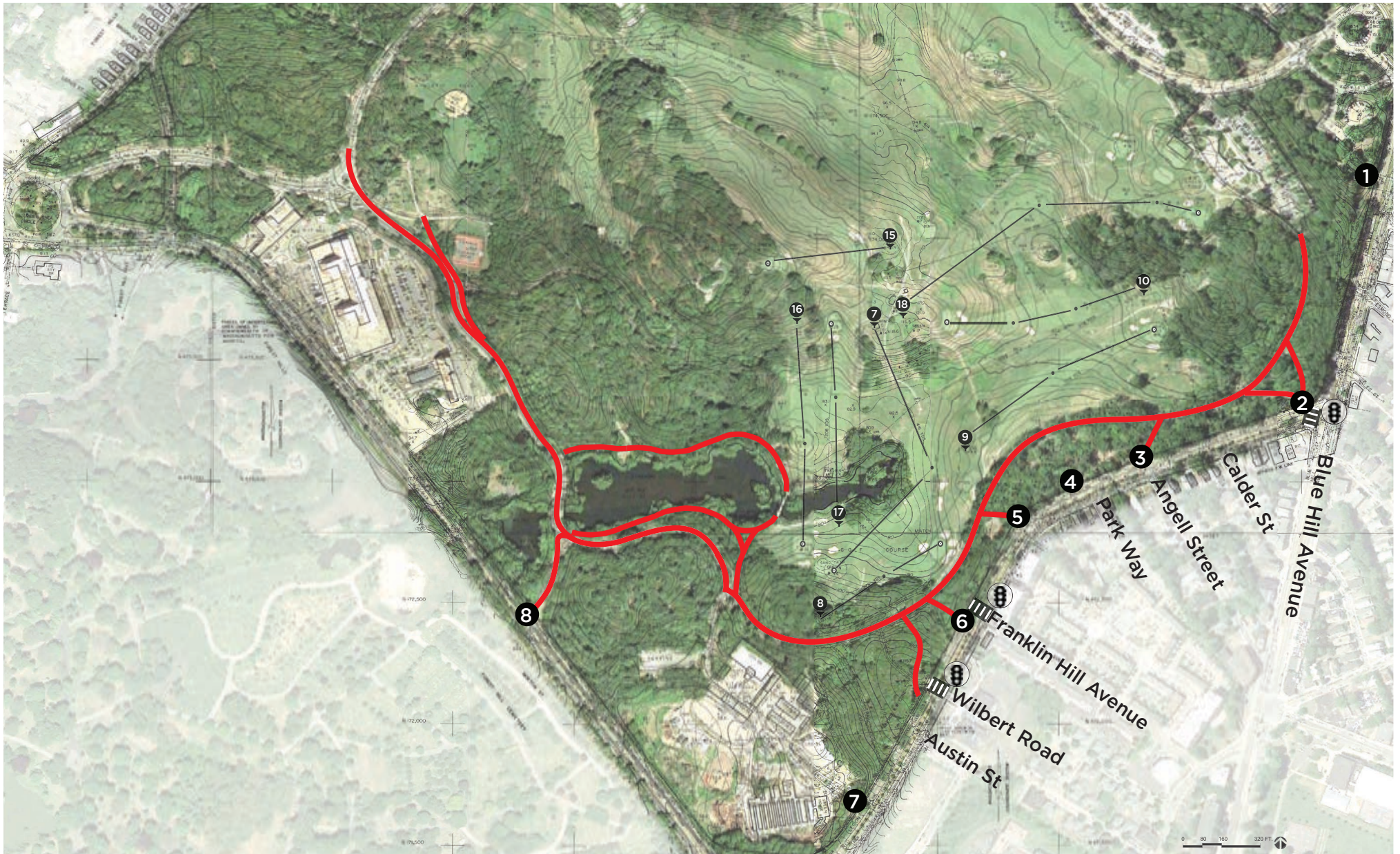
Road Width Study, Existing Conditions

10



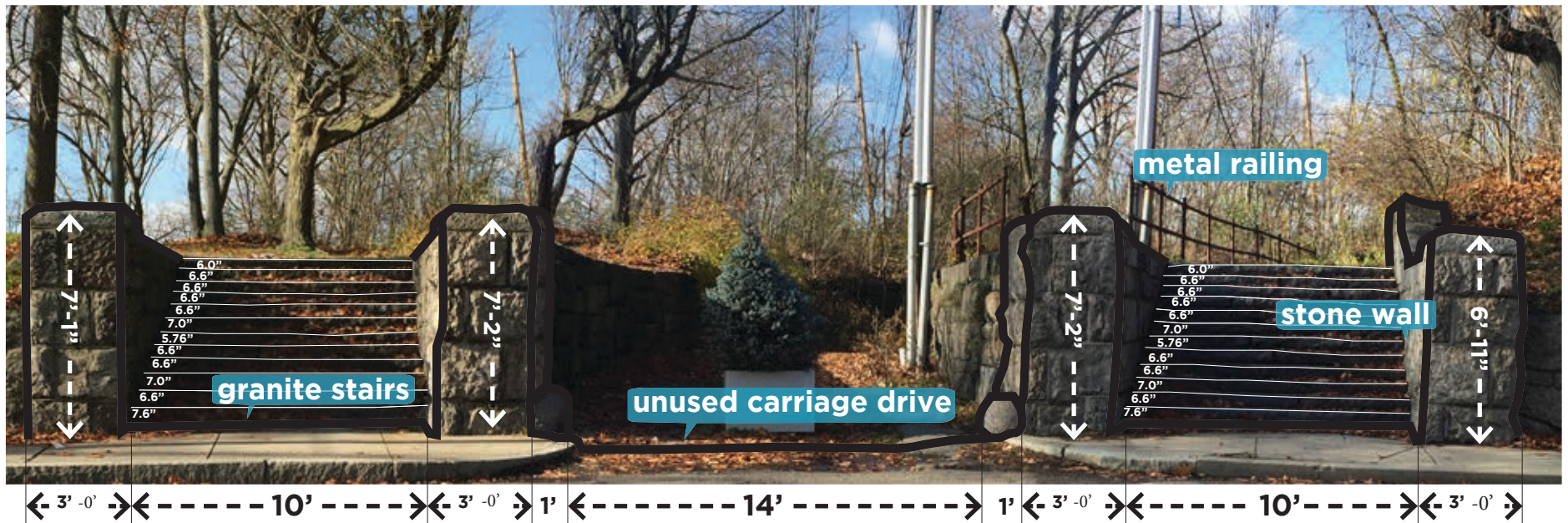
## Road Width Study, Existing Conditions





# Entrances

1



Graphics From Entrances Study, The Refectory



2



Graphics From Entrances Study, intersection of American Legion Highway and Blue Hill Avenue

3



Graphics From Entrances Study, across from Angell Street



4

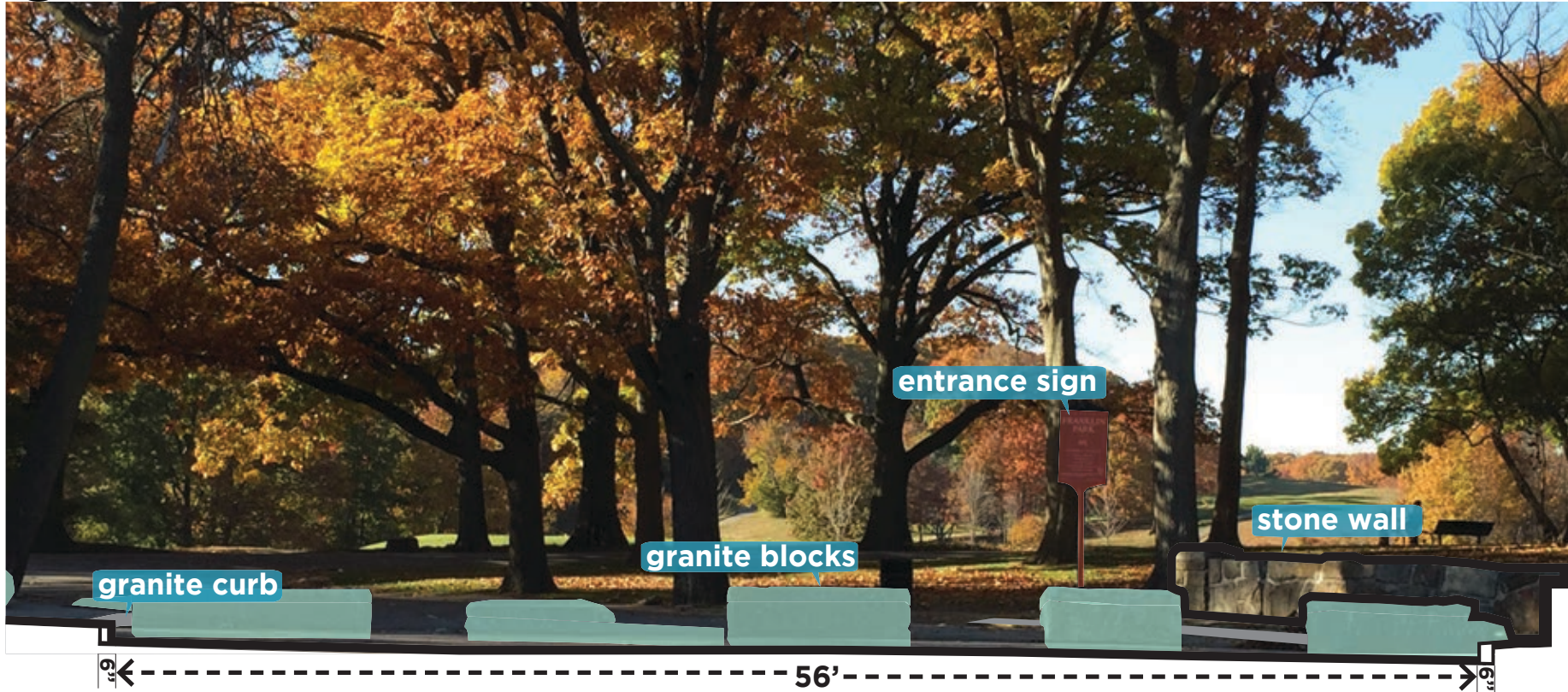


Graphics From Entrances Study, across from Park Way



kzla

5

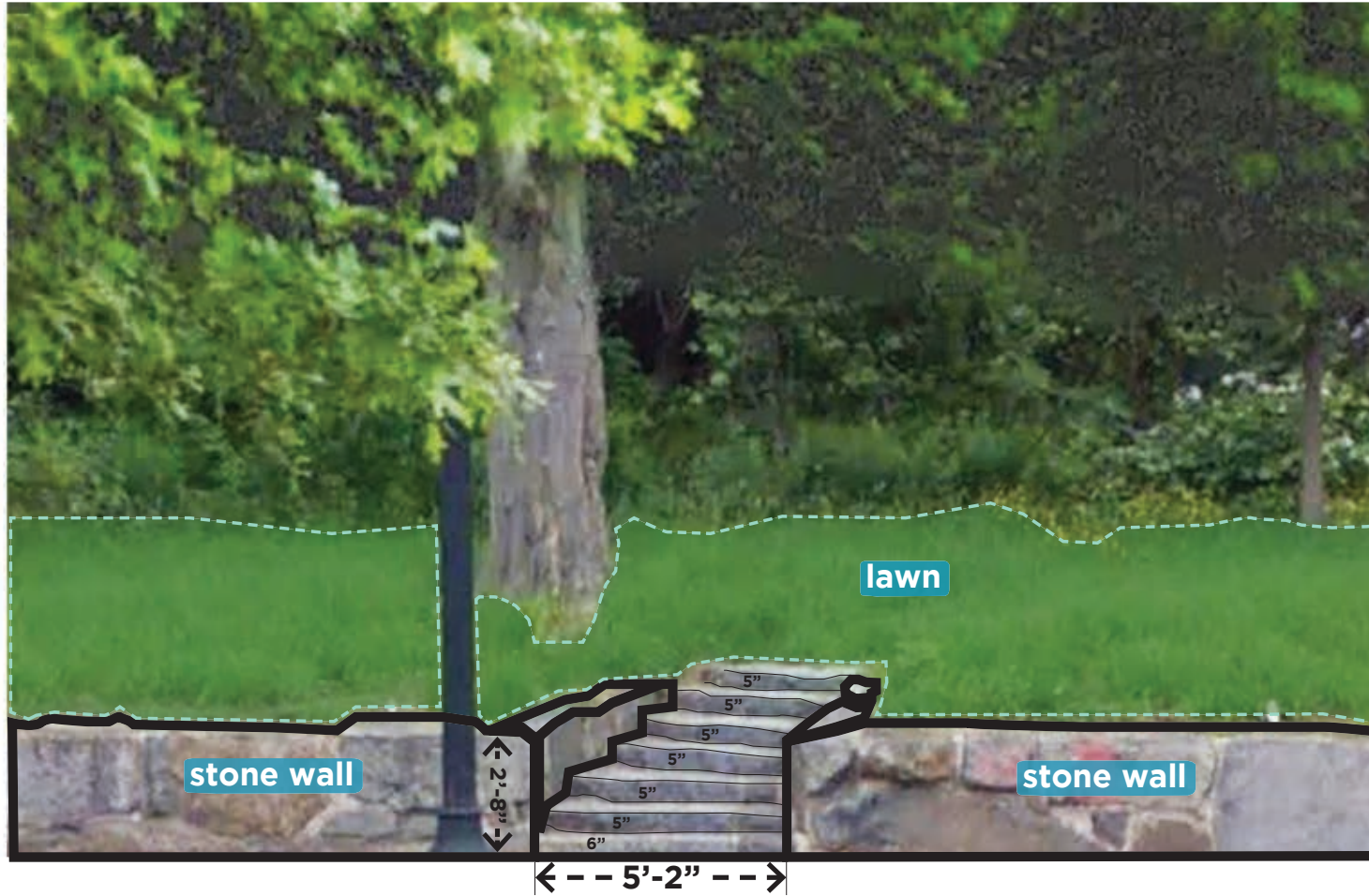


Graphics From Entrances Study, American Legion Highway Entry



kzla

6



Graphics From Entrances Study, across from Franklin Hill Avenue

7



Graphics From Entrances Study, BPRD Maintenance Access





8



Graphics From Entrances Study, Morton Street Entry



Where are the Areas of Pedestrian and Vehicular Conflict?

What do you like about Franklin Park?

Do you drive and park in the project area?

Do you walk about Scarboro Pond?

Are there Areas of Safety Concern?

How do you enter the park?


Do you play tennis?

Do you go fishing?

Questions



kzla



**Community Meeting  
1/26/17**

**Conceptual Alternatives**

**Traffic Analysis**

**Community Meeting #2**

**Next Steps**



**kzla**