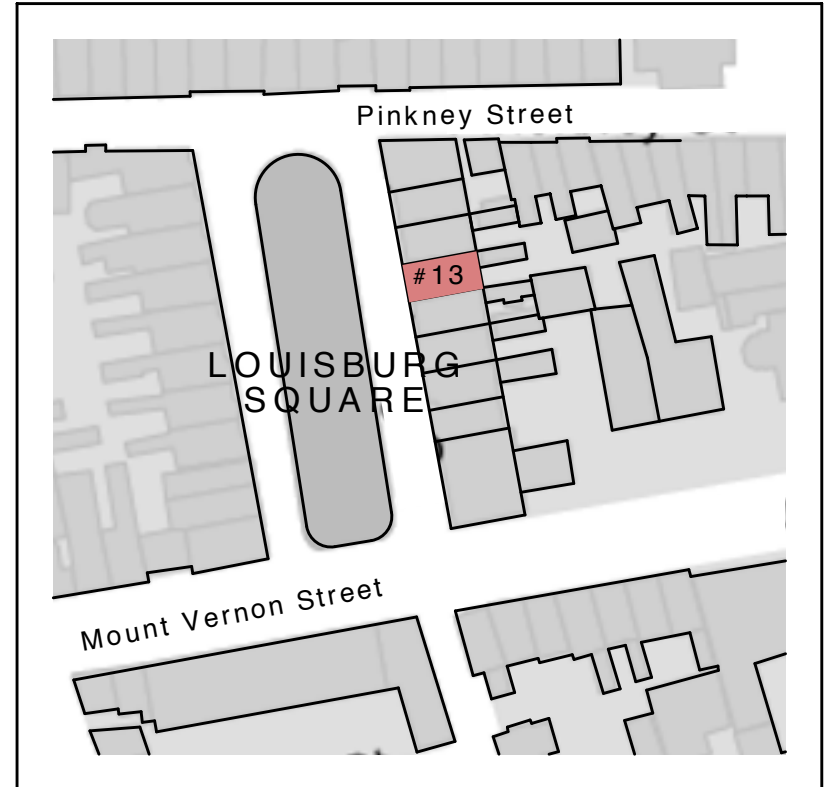


13 LOUISBURG SQUARE





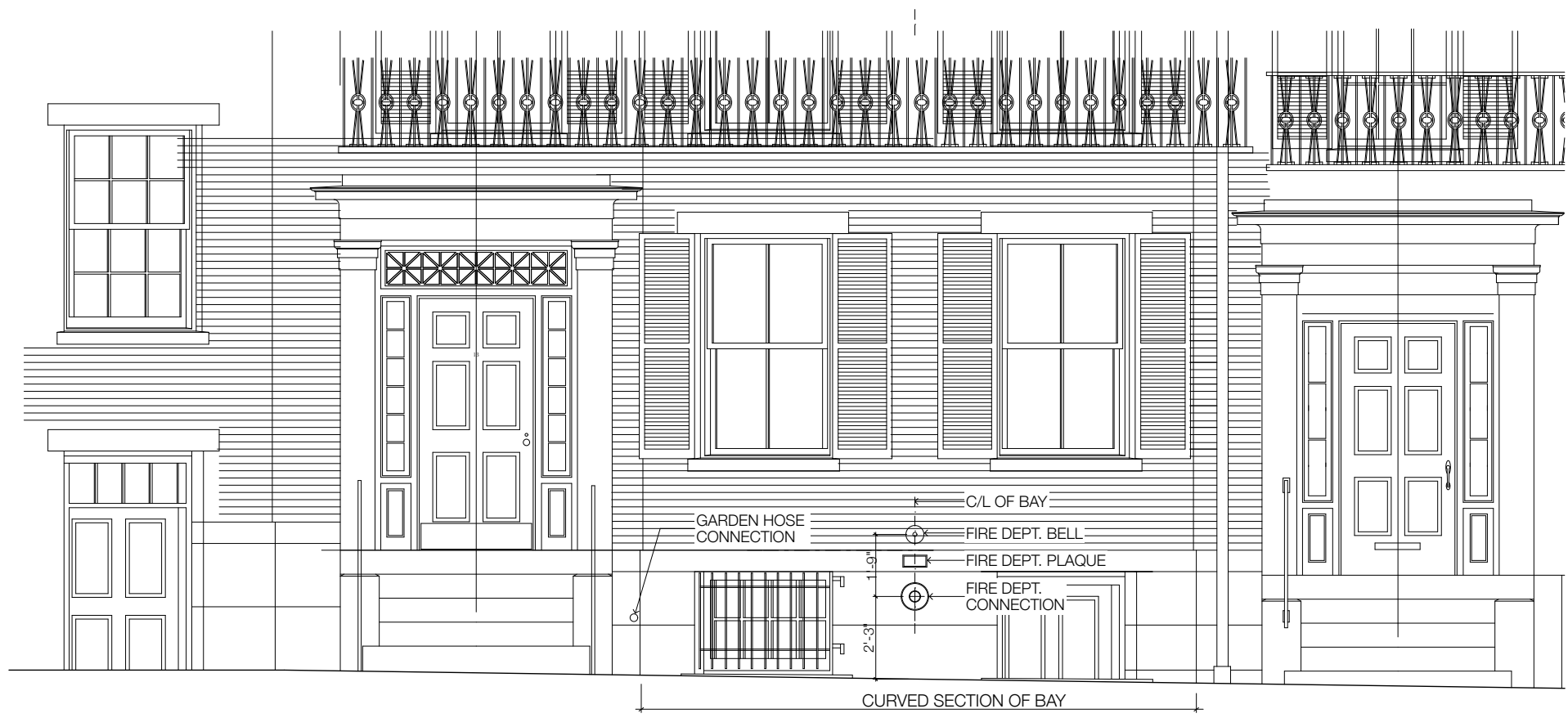
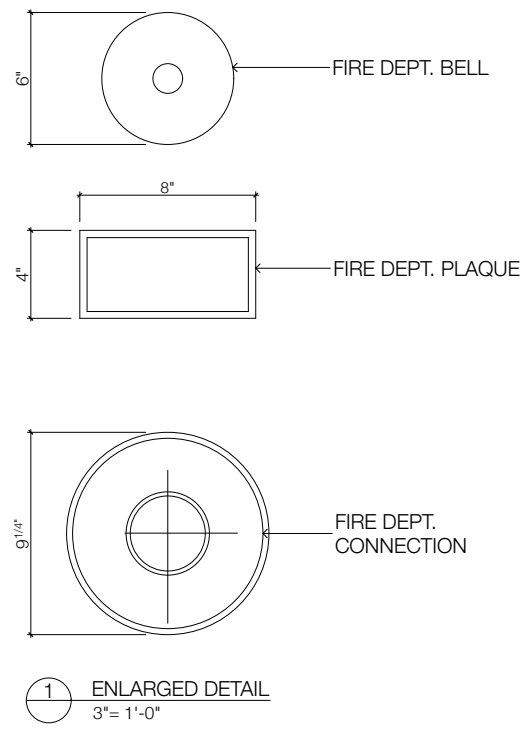
NEW HOSE BIB LOCATION
WEST FACADE



WINDOW & DOOR AT CURVED BAY
WEST FACADE



WEST FACADE



2 WEST ELEVATION
PARTIAL VIEW
1/2"= 1'-0"



3 WEST ELEVATION
1/4"= 1'-0"



The Symbol of Protection



UL, UL-C, and FM Approved
 Sizes Available: 6" (150mm), 8" (200mm) and 10" (250mm)
 Voltages Available: 24VAC, 120VAC, 12VDC (10.2 to 15.6) Polarized, 24VDC (20.4 to 31.2) Polarized

Service Use: Fire Alarm, General Signaling, Burglar Alarm
 Environment: Indoor or outdoor use (See Note 1), 40° to 150°F (-40° to 60°C)
 Termination: AC Bells - 4 No. 18 AWG stranded wires, DC Bells - Terminal strip
 Finish: Red powder coating
 Options: Model BBK-1 weatherproof backbox, Model BBK-1 deep weatherproof backbox

These vibrating type bells are designed for use as fire, burglar or general signaling devices. They have low power consumption and high decibel ratings. The unit mounts on a standard 4" (101mm) square electrical box for indoor use or on a model BBK-1 weatherproof backbox or BBK-1 deep weatherproof backbox for outdoor applications. Weatherproof backbox model BBK-1, Stock No. 1500001.

- Notes:
- Minimum dB ratings are calculated from integrated sound pressure measurements made at Underwriters Laboratories as per UL Standard 464. UL temperature range is -30° to 150°F (-34° to 60°C)
 - Typical dB ratings are calculated from measurements made with a conventional sound level meter and are indicative of output levels in an actual installation.
 - UL-C only applies to MBA DC bells.

Size inches (mm)	Voltage	Model Number	Stock Number	Current (Max.)	Typical dB at 10 ft. (3m) (2)	Minimum dB at 10 ft. (3m) (1)
6 (150)	12VDC	MBA126	1750070	.12A	85	76
8 (200)	12VDC	MBA128	1750080	.12A	90	77
10 (250)	12VDC	MBA120	1750060	.12A	92	78
6 (150)	24VDC	MBA246	1750100	.06A	87	77
8 (200)	24VDC	MBA248	1750110	.06A	91	79
10 (250)	24VDC	MBA240	1750090	.06A	94	80
6 (150)	24VAC	PBA246	1806234*	.17A	91	78
8 (200)	24VAC	PBA248	1806244*	.17A	94	77
10 (250)	24VAC	PBA240	1806244*	.17A	94	78
6 (150)	120VAC	PBA1206	1806120*	.05A	92	83
8 (200)	120VAC	PBA1208	1806120*	.05A	99	84
10 (250)	120VAC	PBA1210	1806120*	.05A	99	86

All DC bells are polarized and have built-in transient protection.
 * Does not have UL-C listing

WARNING
 In outdoor or wet installations, bell must be mounted with weatherproof backbox, BBK-1 or BBK-1. Standard electrical boxes will not provide a weatherproof enclosure. If the bell and/or assembly is exposed to moisture, it may fail or create an electrical hazard.

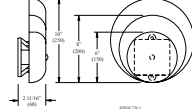


The Symbol of Protection

BELLS
 PBA-AC & MBA-DC

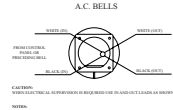
Bell Dimensions Inches (mm)

Fig. 1



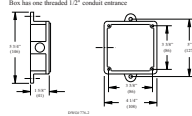
Wiring (rear view)

Fig. 3

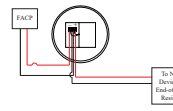


Weatherproof Backbox Dimensions Inches (mm)

Fig. 2



BBK-1



Installation

- The bell shall be installed in accordance with NFPA 13, 72, or local AHJ. The top of the device shall be no less than 90" AFF and not less than 6" below the ceiling.
- Remove the gong.
- Connect wiring (see Fig. 3).
- Mount bell mechanism to backbox (bell mechanism must be mounted with the striker pointing down).
- Reattach the gong the way that the gong positioning pin, in the mechanism housing, is in the hole in the gong.
- Test all bells for proper operation and observe that they can be heard where required (bells must be heard in all areas as designated by the authority having jurisdiction).

WARNING
 Failure to install striker down will prevent bell from operating.

SNOUTS

Female Swivel Snouts
 Act six inlets in concealed and single-inlet fire department connections. They feature a wide hex-shaped flange to keep FDC wall plates secure and provide a finished look.
 Finishes include cast brass, polished brass, or polished chrome. All come standard with pin lugs.
 Construction Material: Cast Brass
 Rated for 300 PSI

Part Number	Configuration	Finish
160RBA	2 1/2" Female NST Swivel x 2 1/2" Female NPT Rigid	Rough Brass
160PBA	2 1/2" Female NST Swivel x 2 1/2" Female NPT Rigid	Polished Brass
160PCA	2 1/2" Female NST Swivel x 2 1/2" Female NPT Rigid	Polished Chrome

Male Snouts
 Act six outlets in concealed test headers and single-outlet connections. They feature a wide hex-shaped flange to keep FDC wall plates secure and provide a finished look.
 Finishes include cast brass, polished brass, or polished chrome.
 Construction Material: Cast Brass
 Rated for 300 PSI

Part Number	Configuration	Finish
163A25RB	2 1/2" Male NST x 2 1/2" Female NPT Rigid	Rough Brass
163A25PB	2 1/2" Male NST x 2 1/2" Female NPT Rigid	Polished Brass
163A25PC	2 1/2" Male NST x 2 1/2" Female NPT Rigid	Polished Chrome
163A3RB	2 1/2" Male NST x 3" Female NPT Rigid	Rough Brass
163A3PB	2 1/2" Male NST x 3" Female NPT Rigid	Polished Brass
163A3PC	2 1/2" Male NST x 3" Female NPT Rigid	Polished Chrome

222 Bemis Road, Fitchburg, MA 01420 | Tel: 978-345-7570 | Fax: 978-345-7572
 www.americanfirehose.com | sales@americanfirehose.com

Fire Department Connections

Single Outlet Wall Hydrants
 Acts as an auxiliary connection for fire department use. Features a round, flush type appearance and unobstructed waterway.
 250 GPM
 • All units come complete with wall plate, male snoot (hex adapter), and cap & chain.
 • Wall Plate Lettering: "Wall Hydrant"

WH11-01B

Part #	Size & Configuration	Outlet Thread	Specify Finish:
WH11-01	2 1/2" F.NPT x 2 1/2" M.NST	NST	<input type="checkbox"/> RB Rough Brass <input type="checkbox"/> PB Polished Brass <input type="checkbox"/> PC Polished Chrome

222 Bemis Road, Fitchburg, MA 01420 | Tel: 978-345-7570 | Fax: 978-345-7572
 www.americanfirehose.com | sales@americanfirehose.com