

607 Boylston Phase - 1

Boylston Street

Boston, MA

© Silverman Trykowski Associates, Inc. expressly reserves its common law copyright and other property rights in these plans. These plans are not to be reproduced, changed or copied in any form or manner whatsoever nor are they to be assigned to any third party without first obtaining the expressed written permission and consent of Silverman Trykowski Associates, Inc.



21 Drydock Avenue
7th Floor West
Boston, MA 02210
t: 617.426.5401
f: 617.426.5491

www.sta-design.com

DEMOLITION PLAN LEGEND

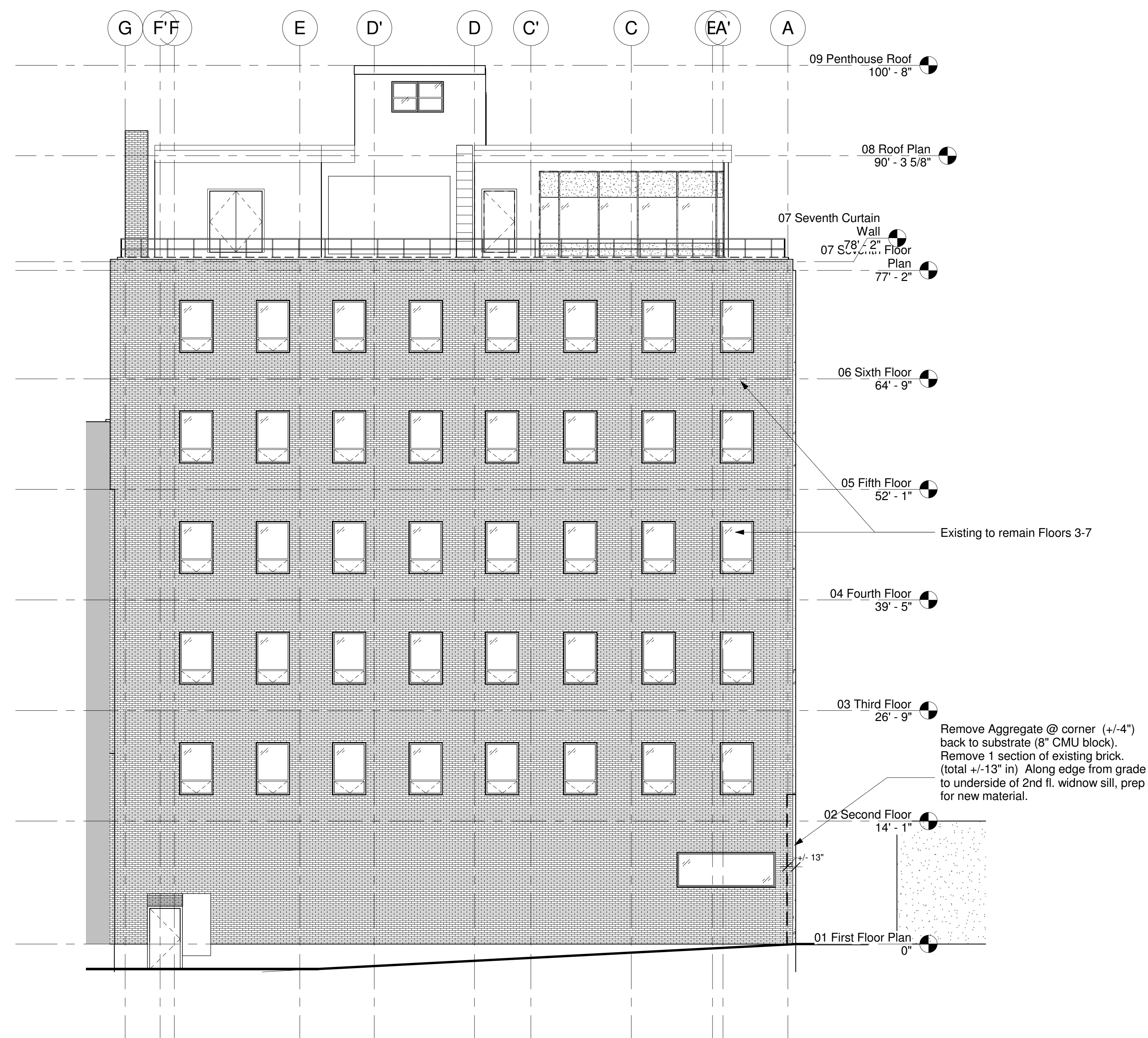
- Existing wall to remain
- - - Remove existing wall
- ⌋ Existing door to be removed
- ⌋ Existing door to remain
- Not In Contract
- ▨ Remove topping slab where hatch is, prep for new flooring material.

DEMOLITION NOTES:

1. CONFORM TO THE MASSACHUSETTS STATE BUILDING CODE, 8TH EDITION, MASSACHUSETTS STRETCH ENERGY CODE, 2009 INTERNATIONAL BUILDING CODE, AND ALL LOCAL AND STATE SUPPLEMENTS.
2. CONTRACTOR SHALL COORDINATE SITE RESTRICTIONS AND REQUIREMENTS WITH OWNERS AND SUBMIT AN OPERATIONS, LOGISTICS, AND SAFETY PLAN FOR REVIEW PRIOR TO STARTING WORK.
3. CONTRACTOR SHALL COORDINATE PROTECT THE EXISTING BUILDING AS WELL AS HARDSCAPING AND LANDSCAPING FROM DAMAGE, DUST, DEBRIS, AND UNAUTHORIZED ACCESS THROUGHOUT CONSTRUCTION. CONTRACTOR SHALL REPAIR ANY DAMAGE TO EXISTING CONDITIONS AT NO COST TO THE OWNER.
4. MAINTAIN SAFE ACCESS TO BUILDING AND AGRESS POINTS AT ALL TIMES DURING CONSTRUCTION. PROVIDE OVERHEAD PROTECTION AT ALL TIMES BELOW ACTIVE WORK AREAS.
5. G.C. TO COORDINATE WITH THE BUILDING OWNER FOR DISPOSAL OF ALL RUBBISH AND DEBRIS CAUSED BY THE PROJECT. ALL COMMON AREAS TO BE KEPT CLEAN AT ALL TIMES.
6. PRIOR TO COMMENCEMENT OF ANY WORK, GC IS TO COORDINATE REMOVAL OF ANY AND ALL PLUMBING, ELECTRICAL, MECHANICAL AND/OR ARCHITECTURAL ITEMS, INCLUDING WALL PARTITIONS WITH ALL SUBSTRATES.
7. BUILDING MATERIALS AFFECTED BY THE WORK OF THIS PROJECT MAY CONTAIN HAZARDOUS MATERIALS SUCH AS ASBESTOS (EXAMPLE, IN BUILT-UP ROOFING FELTS AND FLASHINGS) OR PCBs (EXAMPLE, SEALANTS). CONTRACTOR SHALL ENGAGE IN INDUSTRIAL HYGIENIST TO TEST FOR THE PRESENCE OF HAZARDOUS MATERIALS AND ASSIST WITH REMOVAL AND/OR CONTAINMENT PROGRAM.
8. PRIOR TO COMMENCEMENT OF ANY WORK, GC IS TO VERIFY ALL EXISTING CONDITIONS AND REPORT ANY DISCREPANCY FROM CONDITIONS AND DIMENSIONS INDICATED ON THE DRAWINGS TO THE ARCHITECT IMMEDIATELY.
9. ALL FINISHES, MATERIALS, SYSTEMS ETC. WHICH ARE TO REMAIN ARE TO BE PROTECTED DURING CONSTRUCTION.

EXTERIOR DEMOLITION MATERIAL LEGEND

- ▨ EXISTING AGGREGATE PANEL, OPTION A. REMOVE 1ST FL. TO UNDERSIDE OF 2ND FL. WINDOW SILL - ONLY
- ▨ EXISTING GLAZED BRICK, OPTION A, REMOVE 1ST FL. TO UNDERSIDE OF 2ND FL. WINDOW SILL - ONLY
- ▨ EXISTING GREEN MARBLE, REMOVE THROUGHOUT 1ST FL.
- ▨ EXISTING YELLOW BRICK AT ALLEY AND PARTI WALL, EXISTING TO REMAIN
- ▨ EXISTING STOREFRONT GLAZING, REMOVE THROUGHOUT 1ST FL.
- ▨ EXISTING WINDOW GLAZING, EXISTING TO REMAIN
- ▨ EXISTING CORRUGATED METAL PANELS AT PENTHOUSE, EXISTING TO REMAIN



1 North Elevation Demolition - Alley
1/8" = 1'-0"

No.	Description	Date

Scale	1/8" = 1'-0"
Project Number	2014.64
Date	07/10/2014
Drawn by	SRB
Checked by	TT

D-303
North Elevation
Demolition - Phase 1



607 BOYLSTON STREET

RUSKIN®

3900 Dr. Greaves Rd. • Kansas City, MO 64030 • (816) 761-7476 • FAX (816) 765-8955

ELF375DX and ELF375DXH DRAINABLE STATIONARY LOUVERS EXTRUDED ALUMINUM

STANDARD CONSTRUCTION

FRAME
4" (102) deep, 6063T5 extruded aluminum.
ELF375DX - .081" (2.1) nominal wall thickness.
ELF375DXH - .125" (3.2) nominal wall thickness.
Downspouts and caulking surfaces provided.

BLADES
6063T5 extruded aluminum.
ELF375DX - .081" (2.1) nominal wall thickness.
ELF375DXH - .125" (3.2) nominal wall thickness.
Drainable blades are positioned at 37 1/2° angle and spaced approximately 5 3/32" (129) center to center.

SCREEN
5/8" x .040" (16 x 1) expanded, flattened aluminum bird screen in removable frame. Screen adds approximately 1/2" (13) to louver depth.

FINISH
Mill.

MINIMUM SIZE
12"w x 12"h (305 x 305).

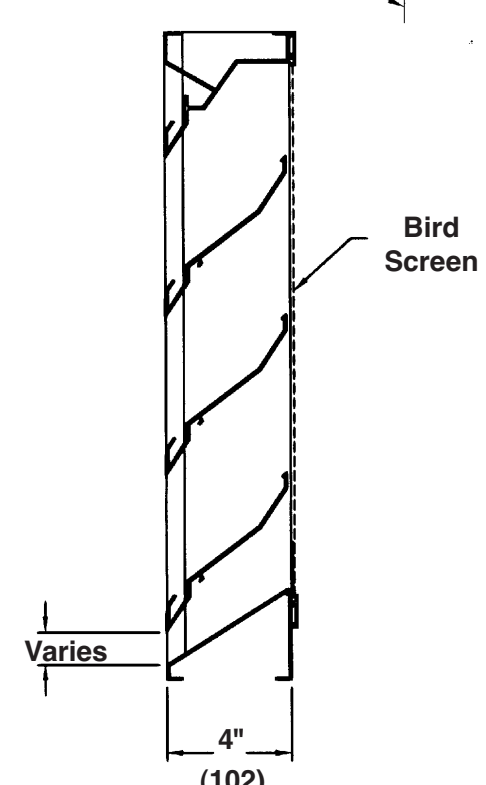
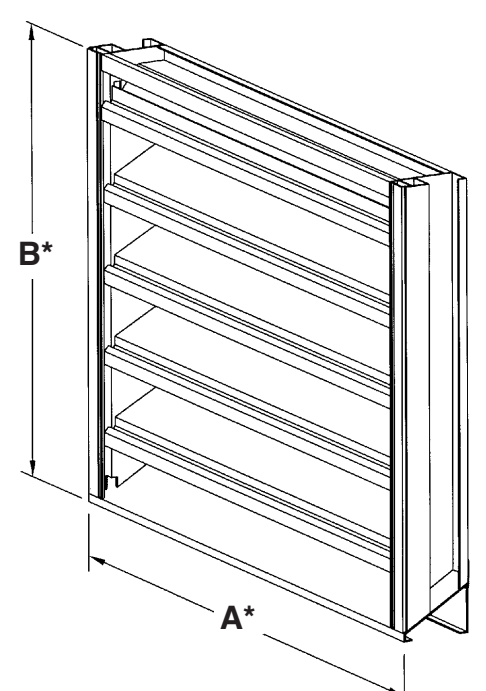
APPROXIMATE SHIPPING WEIGHT
ELF375DX - 4 lbs./ft.² (19.5 kg/m²).
ELF375DXH - 6 lbs./ft.² (29.3 kg/m²).

MAXIMUM FACTORY ASSEMBLY SIZE
Single sections shall not exceed 120"w x 90"h (3048 x 2286) or 90"w x 120"h (2286 x 3048).
Louvers larger than the maximum single section size will require field assembly of smaller sections.

BLADE SUPPORTS
Louvers may be provided with rear mounted blade supports that increase overall louver depth depending on louver size, assembly configuration or windload.

Consult Ruskin for additional information.

LEED Material Information
Contact Ruskin for Recycled Material and Manufacturing Location Information.



FEATURES

The ELF375DX and ELF375DXH offers:

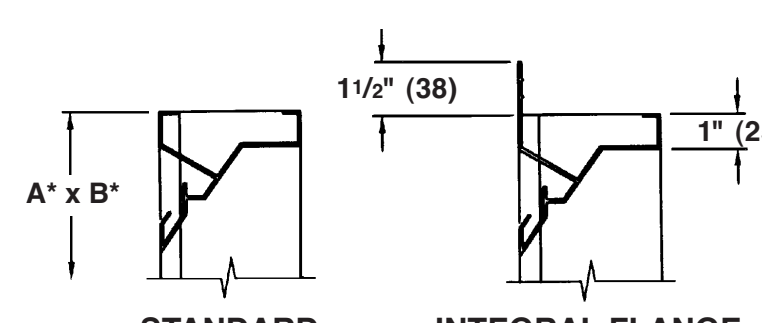
- 54% Free Area.
- Published performance ratings based on testing in accordance with AMCA Publication 511.
- High performance frame system with drainable head collects and removes water to provide excellent water penetration performance.
- Drain gutter in each blade minimizes water cascade between blades.
- Architecturally styled, hidden mullions allowing continuous line appearance up to 120" (3048).
- Aluminum construction for low maintenance and high resistance to corrosion.
- All welded construction.

VARIATIONS

Variations to the basic design of these louvers are available at additional cost. They include:

- Extended sill.
 - Hinged frame.
 - Front or rear security bars.
 - Filter racks.
 - A variety of bird and insect screens.
 - Selection of finishes: prime coat, 50% PVDF, 70% PVDF, epoxy, Pearldezide 50 & 70 (mica), clear and color anodize. (Some variation in anodize color consistency is possible.)
- Consult Ruskin for other special requirements.

FRAME CONSTRUCTION



*Units furnished 1/4" (6) smaller than given opening dimensions.

TAG	QTY.	SIZE		FRAME	VARIATIONS
		A*-WIDE	B*-HIGH		
PROJECT ARCH/ENGR. REPRESENTATIVE				LOCATION CONTRACTOR DATE	

Spec ELF375DX/ELF375DXH-513/Replaces ELF375DX/ELF375DXH-610 ALL STATED SPECIFICATIONS ARE SUBJECT TO CHANGE WITHOUT NOTICE OR OBLIGATION. © Ruskin May 2013



Silverman Trykowski Associates, Inc. expressly reserves its common law copyright and other property rights in these plans. These plans are not to be reproduced, changed or copied in any form or manner whatsoever nor are they to be assigned to any third party without first obtaining the expressed written permission and consent of Silverman Trykowski Associates, Inc.



617 • 426 1501
21 Drydock Avenue
7th Floor West
Boston, Ma 02210
fx: 617 • 426 • 5491
www.sta-design.com

Job No.	#2017.05
Drawn By	TT Ck'd By TT
Date	4/4/2017
Revisions	

A-101 607 IMAGES

607 Boylston Phase - 1

Boylston Street

Boston, MA

© Silverman Trykowski Associates, Inc. expressly reserves its common law copyright and other property rights in these plans. These plans are not to be reproduced, changed or copied in any form or manner whatsoever nor are they to be assigned to any third party without first obtaining the expressed written permission and consent of Silverman Trykowski Associates, Inc.



21 Drydock Avenue
7th Floor West
Boston, MA 02210
t: 617.426.5401
f: 617.426.5491
www.sta-design.com

PROPOSED ELEVATION FINISH LEGEND

<p>Material Color A Aluminum Composite Panel Alpolic Color: Mica MZG Grey or equal</p> <p>Stone Stone Source Contact - Brian Vogel 617.671.0900 1 1/2" Thick Stone Granite Nordic Black Flamed Finish 0" - 48" AFF Align w/ mullions Granite Nordic Black Brushed (smooth finish) 48" - 192" AFF Verify in field stone dimensions.</p> <p><small>*DO NOT ALLOW RESIN FILLED HOLES IN STONE TO AVOID DISCOLORATION.</small></p>	<p>Material Color C Aluminum Composite Panel - Interior/ Exterior Ceilings ONLY Alpolic Color: BNT White or equal</p>
--	--

METAL PANEL NOTES:

NOTES:
ALL NEW METAL PANELING ALIGNS WITH EX. WINDOWS AND MATERIAL CHANGES, TYPICAL THROUGHOUT ELEVATIONS.

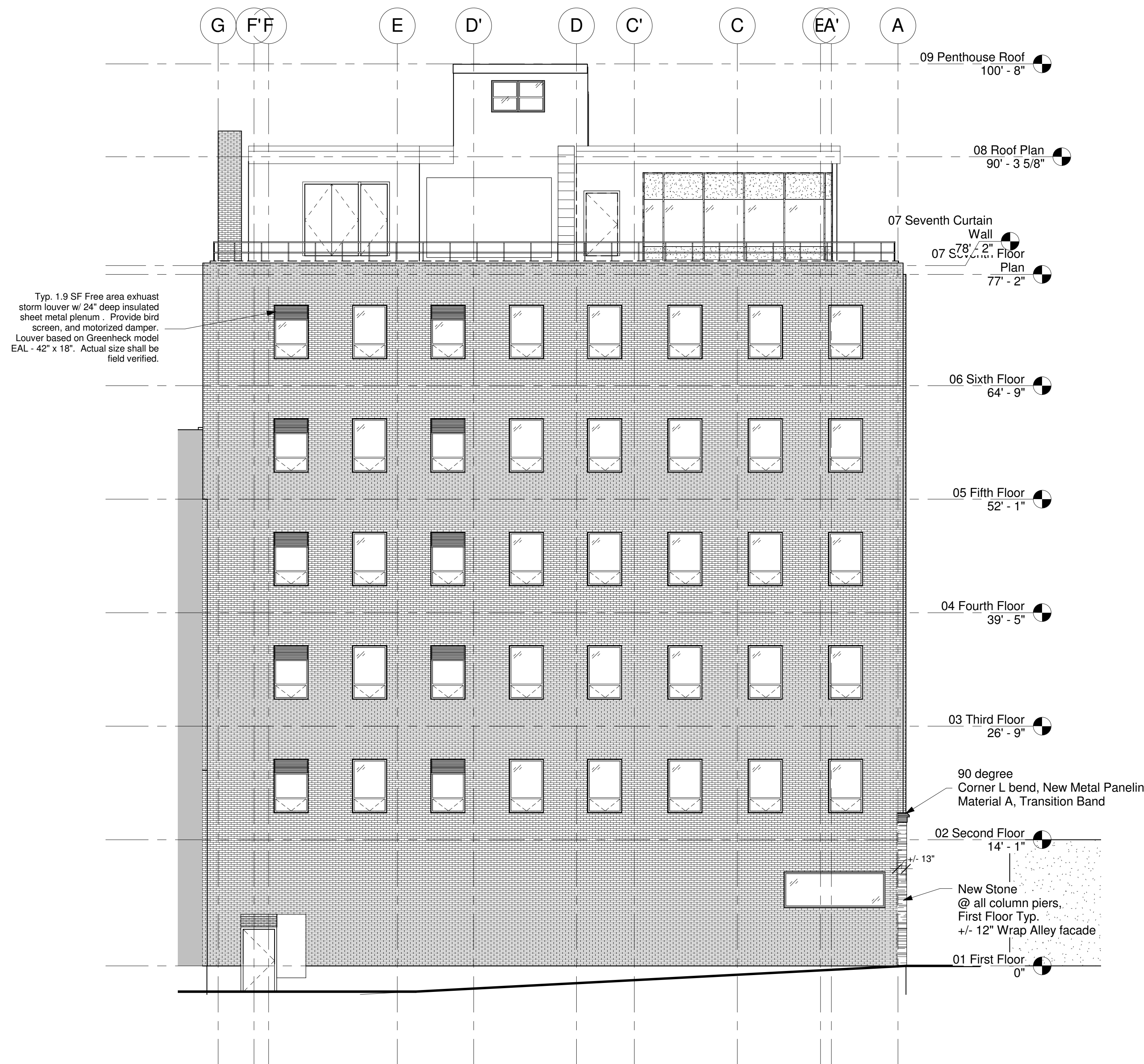
1/2" REVEALS STANDARD THROUGHOUT METAL PANELING

ALL OF THE METAL PANEL WALL SYSTEMS WILL INCLUDE A DEDICATED AIR, WATER AND VAPOR BARRIER MEMBRANE (i.e., SELF-ADHERED RUBBERIZED ASPHALT MEMBRANE) ON THE OUTBOARD SURFACE OF THE EXISTING BACKUP WALLS. THE MEMBRANE WILL BE INTEGRATED AT ALL PERIMETER CONDITIONS AND TRANSITIONS TO PROVIDE CONTINUITY OF THE AIR, WATER AND VAPOR BARRIER SYSTEMS.

IF PANELS CALL FOR **HORIZONTAL** HAT CHANNEL OR STEEL GIRT CONNECTIONS SHIMMING BEHIND IS REQUIRED, SO WATER CAN TRAVEL DOWN THE WATERPROOFING MEMBRANE UNIMPEDED. IN VERTICAL CONNECTION CONDITIONS NOT REQUIRED.

THE MA STRETCH ENERGY CODE, WHICH APPLIES TO THE PROJECT, REQUIRES R-13.3 OF CONTINUOUS EXTERIOR INSULATION IN ABOVE GRADE MASS WALLS. IN AREAS WHERE UNINSULATED PANELS ARE SCHEDULED PROVIDE A MINIMUM 3 1/2" OF MINERAL WOOL INSULATION AGAINST THE AIR, WATER, AND VAPOR BARRIER MEMBRANE. ANOTHER 1" OF SPRAY FOAM INSULATION ON THE INBOARD SIDE OF THE WALL TO REDUCE THERMAL BRIDGING.

NOTE: SEE METAL PANEL SCHEDULE FOR MORE INFORMATION ON SPECIFICATIONS.



1 Proposed North Elevation
1/8" = 1'-0"

No.	Description	Date

Scale 1/8" = 1'-0"
Project Number 2014.64
Date 10/23/2014
Drawn by SRB
Checked by TT

Proposed Exterior North
Elevation - Phase 1