

6 Mt.Vernon Place



Figure 7: Photograph of Mount Vernon Place c. 1860. Boston Public Library.

Mt. Vernon Place c. 1860



#6 #7 #8

Mt. Vernon Place c. 2014

- Approval Requested for:
1. New Shutters, East and South Facade
 2. New Windows, East and South Facade
 3. Revised Rail Design at Rear,
and Eliminated Fire Escape

- Attachments:
- 'A' Shutters
 - 'B' Dog and Pintle
 - 'C' Windows
 - 'D' Light Fixture
 - 'E' South Door





6 Mt. Vernon Place

7 Mt. Vernon Place

Previously Approved North Elevation
(no change requested)



Photo 1: Existing Railing



Photo 2A + 2B: View From Beacon Street



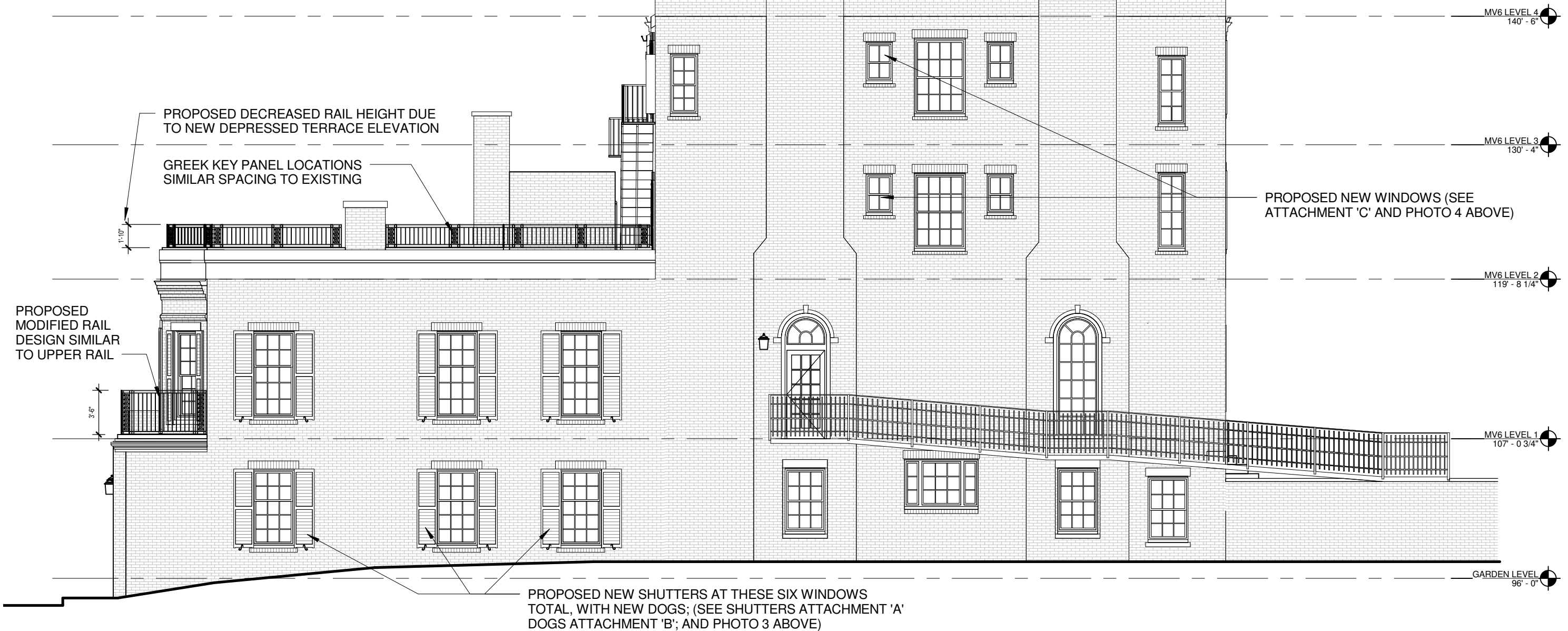
Partial Previous Rail Illustration

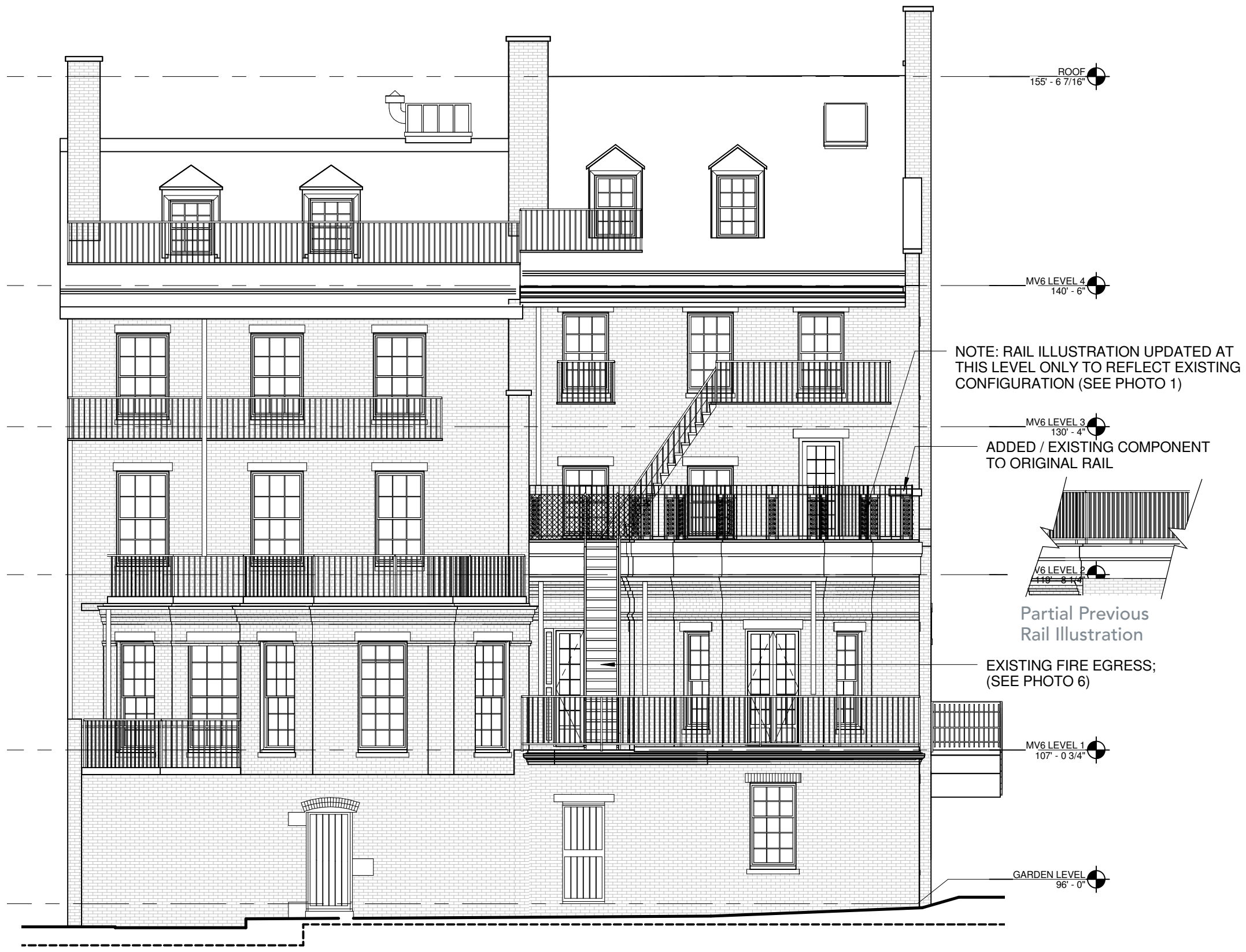


Photo 3: Partial East Elevation - View from State House



Photo 4: Partial East Elevation - View from State House





7 Mt. Vernon Place

6 Mt. Vernon Place

ROOF
155' - 6 7/16"

MV6 LEVEL 4
140' - 6"

NOTE: RAIL ILLUSTRATION UPDATED AT THIS LEVEL ONLY TO REFLECT EXISTING CONFIGURATION (SEE PHOTO 1)

MV6 LEVEL 3
130' - 4"

ADDED / EXISTING COMPONENT TO ORIGINAL RAIL

MV6 LEVEL 2
118' - 8 1/4"

Partial Previous Rail Illustration

EXISTING FIRE EGRESS; (SEE PHOTO 6)

MV6 LEVEL 1
107' - 0 3/4"

GARDEN LEVEL
96' - 0"



Photo 6: Existing Fire Escape

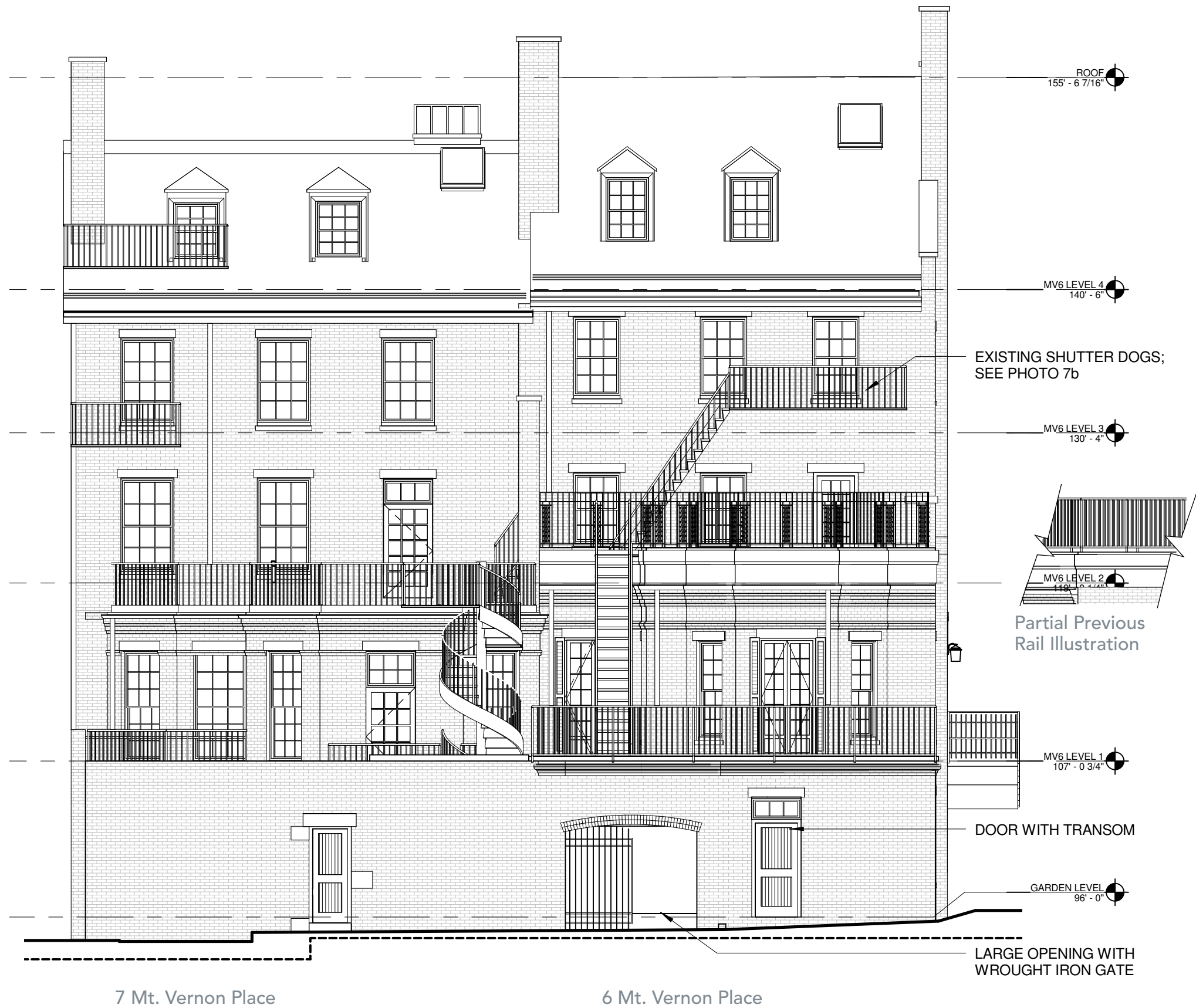
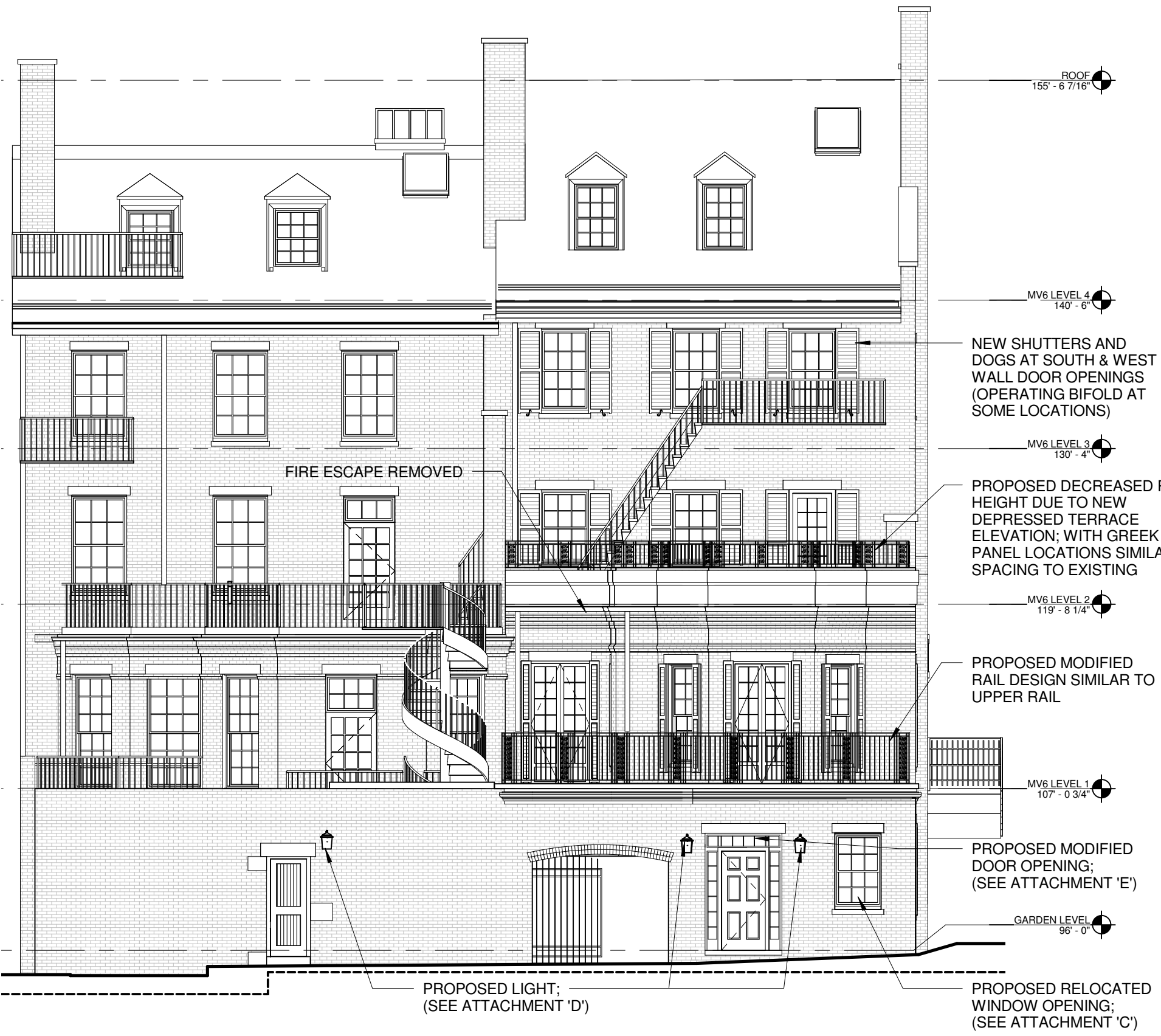


Illustration 7a: View of Joy Place from Joy Street
Illustrating Elevations as Approved July 2014



Picture 7b: Existing Shutter Dogs



7 Mt. Vernon Place

6 Mt. Vernon Place

NOTE: ILLUSTRATION DOES NOT INCLUDE APPROVED TERRACE PLANTERS

Proposed South Elevation



Illustration 8: Proposed View of Joy Place from Joy Street (Fire Escape Removed, Window Added)



Partial Enlarged Elevation



Overall View of Joy Place
North Side

Joy Place
North Side - 8 Mt. Vernon Pl.



Overall View of Joy Place
South Side



Joy Place
North Side - 6 & 7 Mt. Vernon Pl.
Prior to Construction

Existing Window at
6 Mt. Vernon Pl.



Joy Place
South Side - 34 Beacon St.



Joy Place
South Side - 25 Beacon St.



Joy Place
South Side - 33 Beacon St.



Acorn Street



Rollins Place



Champney Place





SUBMITTAL

085200-13

Revision # 1

ATTACHMENT E - SOUTH DOOR

TITLE: Door 118

SENT DATE: 9/7/2016

PROJECT: 25 Beacon/6-7 Mt Vernon

JOB: 14-110

PACKAGE: Wood Window and Doors

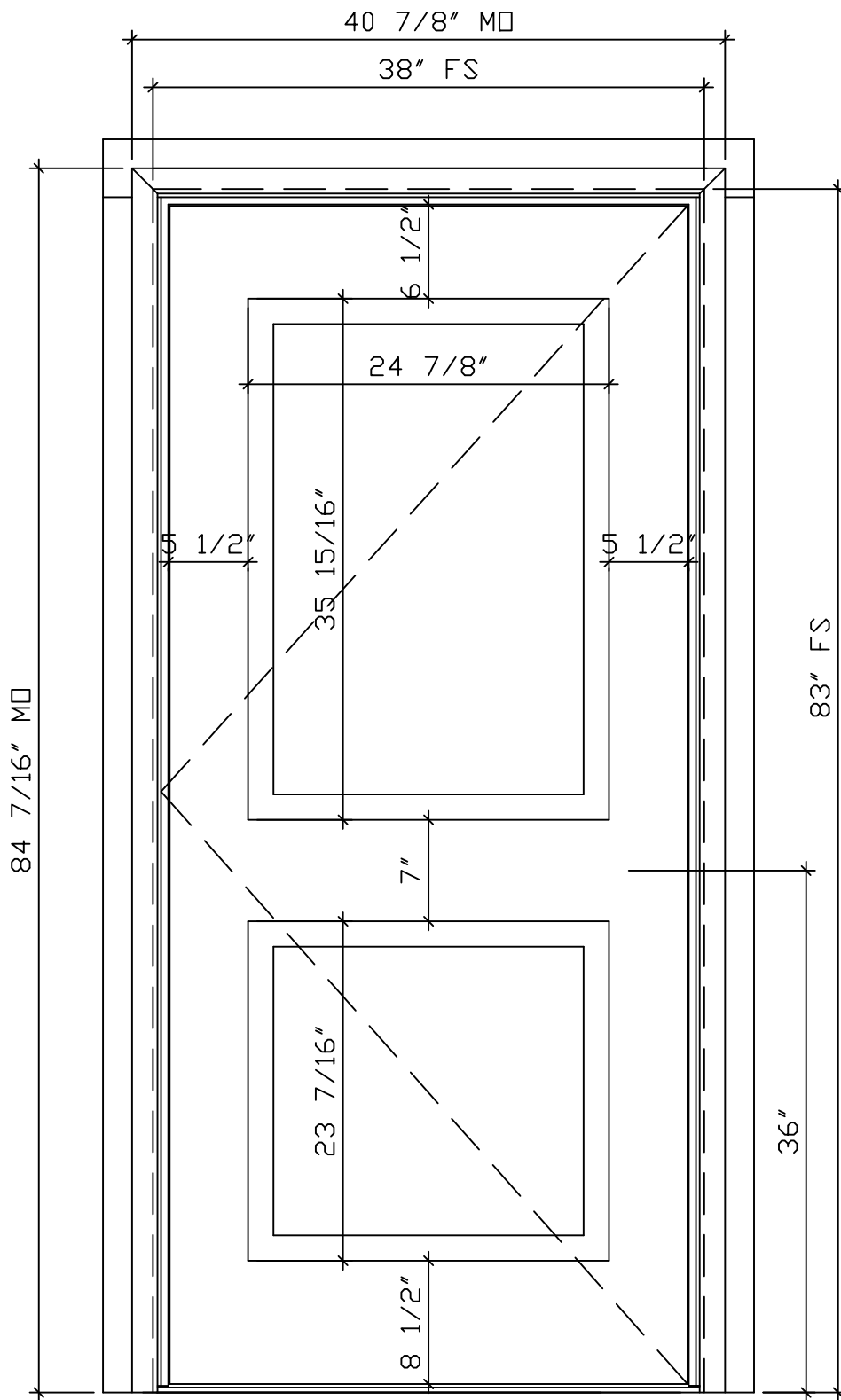
DUE DATE:

SENT TO:
CBT Architects
Chris Pitman

<input checked="" type="checkbox"/> Reviewed	<input type="checkbox"/> Make Corrections As Noted
<input type="checkbox"/> Rejected	<input type="checkbox"/> Revise & Resubmit
<input type="checkbox"/> _____	
<p>Corrections and/or comments made on this submittal during this review do not relieve subcontractor from compliance with the requirements of the drawings and specifications. This check is only for review of general compliance with the information given in the contract documents. The subcontractor is responsible for: confirming and correlating all quantities and dimensions; selecting fabrication processes and techniques of construction; coordinating his work with that of all other trades; and performing his work in a safe and satisfactory manner.</p>	
By: <u>J Burton</u>	Date: <u>9/7/16</u>

Architect's Stamp

Engineer's Stamp



QTY: 1 OUTSWING
 LABEL: 118

PANEL QUANTITIES MAY VARY AT DOORS

6 PANEL DESIGN TO BE SIMILAR

BELISLE SOLID OUTSWING DOOR #118 (EXT. ELEVATION)

Scale : Not to Scale

DOOR SPECS.

- Belisle Solid Exterior door, Outswing,
- In African Mahogany,
- 2 1/4" Thick Slab,
- 6 9/16" jambs, ADA Aluminium sill, mill finish,
- Flat Panels with 1 3/4" CUSTOM decorative moldings around panels,
- No screen,
- DRB US10B ball bearing hinges with flat tips,
- No lockset, No prep,
- 3/4" x 3 1/4" exterior flat casing factory installed, Custom brickmold shipped loose (field applied),
- Standard profiles and details,
- Factory Finish (painted exterior, primed interior), color to be determined.

BELISLE - ARCHITECTURAL WINDOWS AND DOORS



TITLE
 25 BEACON - #118 DOOR

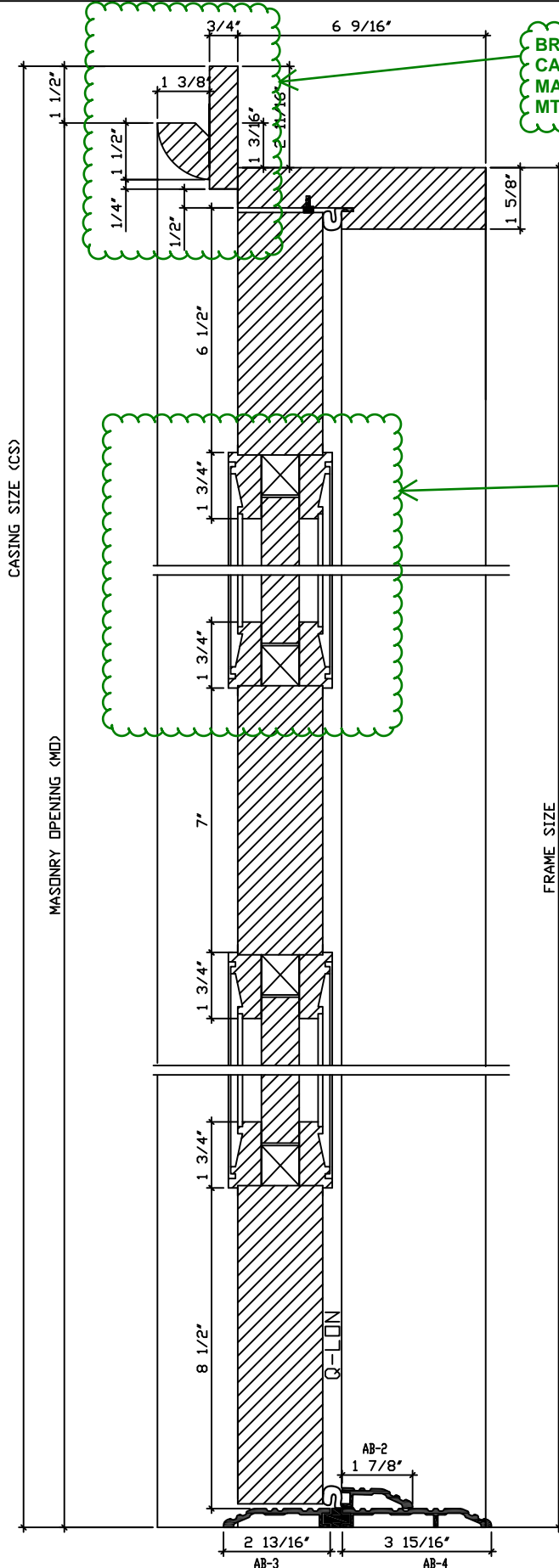
Client
 SEA-DAR CONSTRUCTION

DAWN BY
 KEVIN THIBAUET

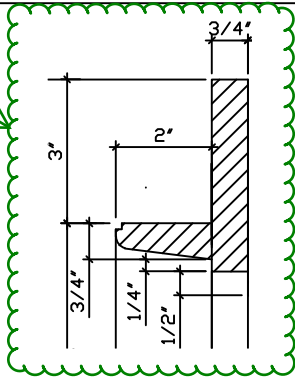
DATE JULY 25TH, 2016

SCALE NOT TO SCALE

PAGE 1



BRICKMOLD AND CASING PROFILES TO MATCH EXISTING 6-7 MT. VERNON PROFILES



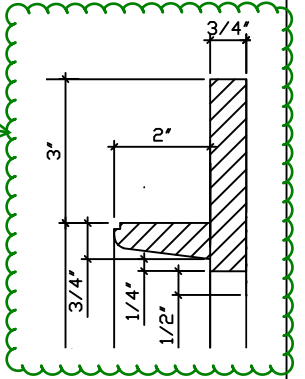
TYPICAL DOOR PANEL DETAILING, PANEL QUANTITIES MAY VARY AT DOORS

STILE / RAIL TO PANEL DETAILING

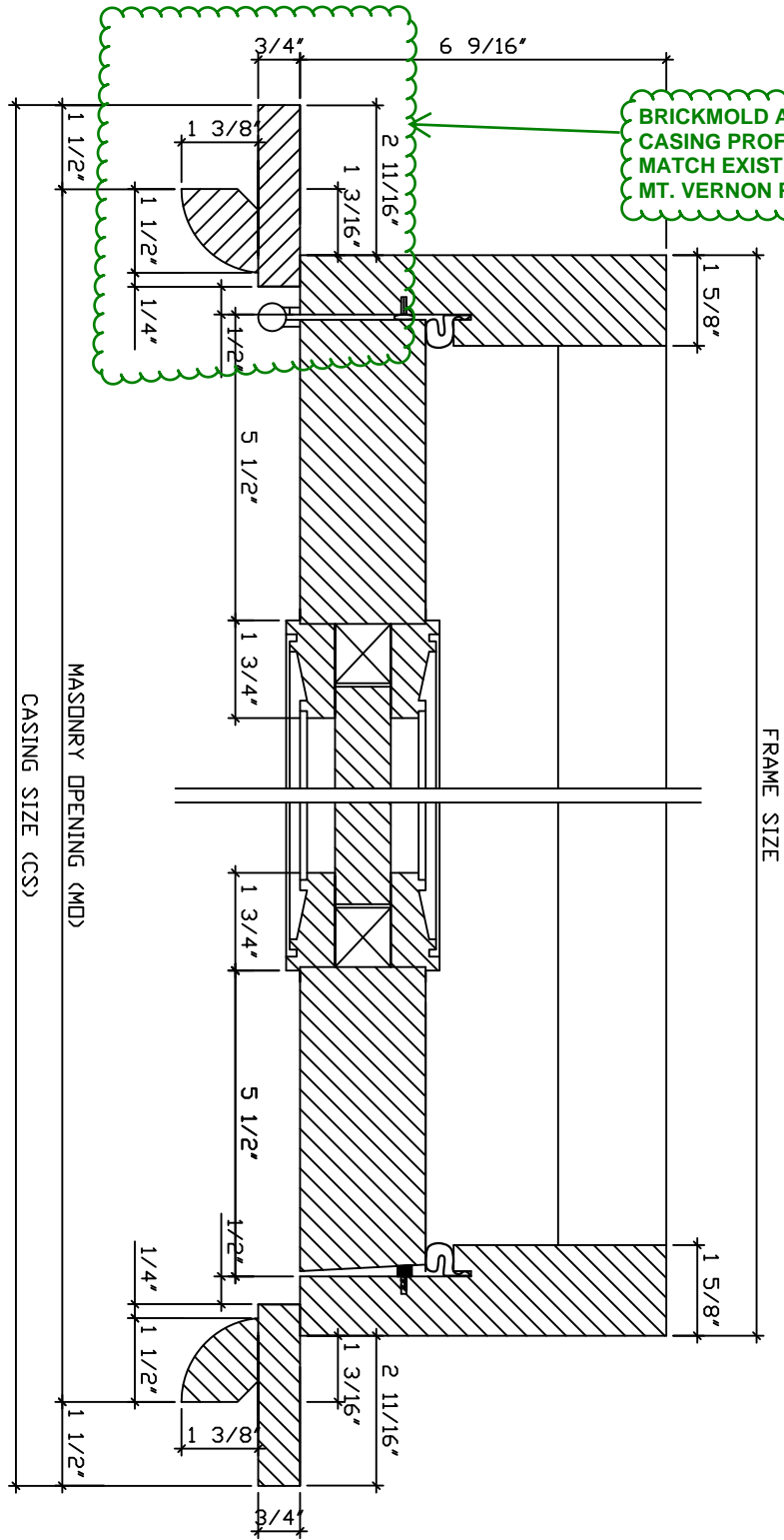
BELISLE SOLID OUTSWING DOOR #118 (VERTICAL SECTION)

Scale : Not to Scale

BELISLE - ARCHITECTURAL WINDOWS AND DOORS		
	TITLE 25 BEACON - #118 DOOR	
	Client SEA-DAR CONSTRUCTION	
	DRAWN BY KEVIN THIBAUET	
	DATE JULY 25TH, 2016	
SCALE NOT TO SCALE		
PAGE 2		



BRICKMOLD AND CASING PROFILES TO MATCH EXISTING 6-7 MT. VERNON PROFILES



BELISLE SOLID OUTSWING DOOR #118 (PLAN VIEW)

Scale : Not to Scale

TITLE 25 BEACON - #118 DOOR	CLIENT SEA-DAR CONSTRUCTION
DRAWN BY 3838997 3838997	
DATE JULY 25TH, 2016	
SCALE NOT TO SCALE	
PAGE 3	

ATTACHMENT D - LIGHT FIXTURE

Submitted by Omni-Lite



Job Name:
25 Beacon and Mt Vernon
Architect: CBT (Boston)
Lighting Consultant: HLB Ltg Design
(Cambridge)

Catalog Number:
8814/80WBBB/26PLT120/FHC/CSA/
FINISH DBT
Notes:

Type:
EX2
OMNI15-40341



Small Scale Commercial Fixtures

8800 CLASSIC RESIDENTIAL SERIES

SPECIFICATIONS

FIXTURES	SOCKET TYPE	OPTICAL SYSTEMS	BB BALLAST BOX
 8830	 MED Single Medium Base Socket	 3L Three Light Cluster Candelabra Socket Assembly	 PL Compact Fluorescent
		 FHC Frosted Hurricane Chimney	 RE3 RE5 Refractor Type 3 and Type 5
			 78BB - Large Scale for up to 150 watt ballasts
			 28BB - Hanging or Pier for up to 150 watt ballasts
			 27BB - Hanging or Pier for up to 100 watt ballasts

FIXTURES						
 8830*	 8815	 8814	 8879	 8827	 8835	
← 9 1/4" →	← 11" → ← 9 1/4" →	← 11" → ← 9 1/4" →	← 13 5/8" → ← 9 1/4" →	← 9 1/4" →	← 9 1/4" →	
23 1/2"	33"	23 1/4"	26 15/16"	73" with 36" Chain	23 3/4"	

NOTE: 8800 Series requires ballast box
Add 2" to 4" on extensions for ballast box.
3 Lite cluster is 25 watt max lamp per socket.
*Remote ballast box required if HID or CF.



555 Lawrence Ave. Roselle, IL 60172 • 847-588-3400 • Fax 847-588-3440
www.sternberglighting.com Email: info@sternberglighting.com

Submitted by Omni-Lite



Job Name:
25 Beacon and Mt Vernon
Architect: CBT (Boston)
Lighting Consultant: HLB Ltg Design
(Cambridge)

Catalog Number:
8814/80WB/BB/26PLT120/FHC/CSA/

FINISH **DBT**
Notes:

Type:
EX2

OMNI15-40341



Small Scale Specifications

BUILDING A PART NUMBER



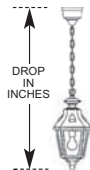
POST & ARM FIXTURES

ARM MOUNTED FIXTURE NO. OF ARMS	CENTER POST TOP FIXTURE (PT)	POST	POST CAP	LIGHT SOURCE BALLAST	OPTICS	OPTIONS	LENS	FINISH
FIXTURE / POST ARM	FIXTURE	(See Post Section)		WATTS / TYPE / VOLTS				



WALL FIXTURES

FIXTURE / WALL BRACKET	LIGHT SOURCE BALLAST	OPTICS	OPTIONS	LENS	FINISH	PIER FIXTURES
WATTS / TYPE / VOLTS						Uses same information boxes as wall fixture
8814/80WB/BB	26PLT120	FHC		CSA	*FINISH*	FIXTURE / PIER BASE



HANGING FIXTURES

FIXTURE / HANGING BRACKET	OVERALL DROP IN INCHES	LIGHT SOURCE BALLAST	OPTICS	OPTIONS	LENS	FINISH
		WATTS / TYPE / VOLTS				

PART NUMBER SELECTIONS

FIXTURES¹

- 8830
- 8815
- **8814**
- 8879
- 8827
- 8835

OPTICS

- RE3
- RE5
- **FHC**
- MED
- 3L
- PL

LENSES

- BG
- **CSA**
- CTA
- CA
- WA

OPTIONS

- LAMPS
- Select from List
- BE - Brass Eagle
- BP - Brass Package

BALLASTS^{1,4}

- 35HPS²
- 50HPS
- 70HPS
- 100HPS
- 150HPS
- 50MHP
- 70MHP
- 100MHP
- 150MHP
- **26PLT**
- 32PLT
- 42PLT
- 57PLT
- 60PLH
- INCAND (150 watt max.)

BB - BALLAST BOX

- 78BB - Large Scale for up to 150 watt ballasts
- 28BB - Hanging or Pier for up to 150 watt ballasts
- 27BB - Hanging or Pier for up to 100 watt ballasts

LAMPS⁵

- HPS35/MED
- HPS50/MED
- HPS70/MED
- HPS100/MED
- HPS150/MED
- MHP50/MED
- MHP70/MED
- MHP100/MED
- MHP150/MED
- PLT26
- PLT32
- PLT42
- PLT57
- PLH60

STANDARD FINISHES*

- BKT Black Textured
- WHT White Textured
- PGT Park Green Textured
- ABZT Architectural Medium Bronze Textured
- **DBT Dark Bronze Textured**

*Smooth Finishes are available upon request

CUSTOM FINISHES

- OI Old Iron
- RT Rust
- WBR Weathered Brown
- CD Cedar
- WBK Weathered Black
- TT Two Tone

STERNBERG SELECT FINISHES

- VG Verde Green
- SI Swedish Iron
- OWGT Old World Gray Textured

ADVISE FINISH

Notes:

- ¹ Pole mounted fixtures - requires ballast to be mounted in pole base.
- ¹ Wall mounted fixtures - requires wall bracket arms with ballast box.
- ¹ Pier mounted fixtures - require PB28BB or PB27BB if ballasted.
- ¹ Hanging fixtures - require CH/SH28BB or CH/SH27BB if ballasted.
- ² 35HPS is 120 volt only.
- ³ Medium base socket only when used to house lamp.
- ⁴ Medium base sockets standard with HID ballasts. 4-pin for PL.
- ⁵ Metal halide systems are pulse start.



555 Lawrence Ave. Roselle, IL 60172 • 847-588-3400 • Fax 847-588-3440
www.sternberglighting.com Email: info@sternberglighting.com

Submitted by Omni-Lite

omni|lite
THE OMNILITE COLLECTION

Job Name:

25 Beacon and Mt Vernon
Architect: CBT (Boston)
Lighting Consultant: HLB Ltg Design
(Cambridge)

Catalog Number:

8814/80WBBB/26PLT120/FHC/CSA/

FINISH **DBT**

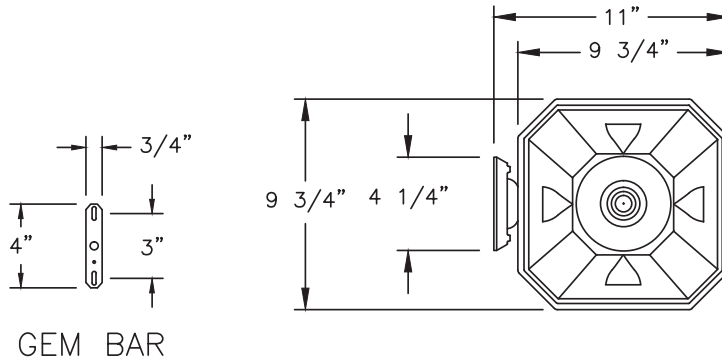
Notes:

Type:

EX2

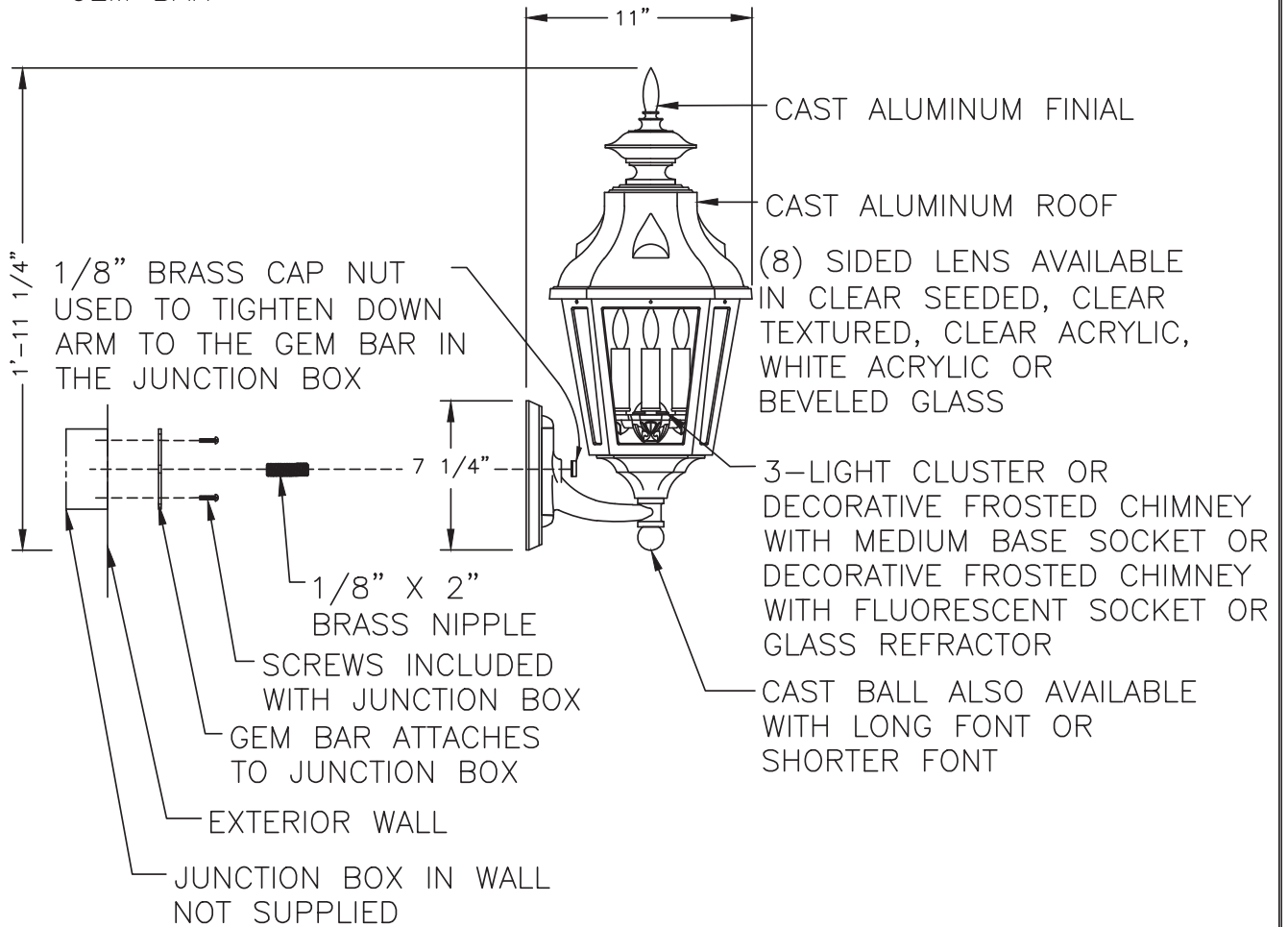
OMNI15-40341

8814 CLASSIC RESIDENTIAL SERIES



ALL ELECTRICAL COMPONENTS ARE U.L. OR E.T.L. LISTED IN USA AND CANADA.

FIXTURE WILL BE PREWIRED AND TESTED.



8814

3/16"=1'	DRAWN LMG
	DRAWN DATE OCT 10 2011
	DRAWING NUMBER



ATTACHMENT C - WINDOWS

SUBMITTAL

085200-10

Revision # 1

SEA - DAR CONSTRUCTION

Building trust one project at a time

TITLE: MVP Windows & Doors Shops

SENT DATE: 2/4/2016

PROJECT: 25 Beacon/6-7 Mt Vernon

JOB: 14-110

PACKAGE: Wood Window and Doors

DUE DATE:

SENT TO:
CBT Architects
Chris Pitman

<input checked="" type="checkbox"/> Reviewed	<input type="checkbox"/> Make Corrections As Noted
<input type="checkbox"/> Rejected	<input type="checkbox"/> Revise & Resubmit
<input type="checkbox"/> _____	

Corrections and/or comments made on this submittal during this review do not relieve subcontractor from compliance with the requirements of the drawings and specifications. This check is only for review of general compliance with the information given in the contract documents. The subcontractor is responsible for: confirming and correlating all quantities and dimensions; selecting fabrication processes and techniques of construction; coordinating his work with that of all other trades; and performing his work in a safe and satisfactory manner.

By: J Burton Date: 2/4/16

<input type="checkbox"/> APPROVED	<input checked="" type="checkbox"/> FURNISH AS CORRECTED
<input type="checkbox"/> REJECTED	<input type="checkbox"/> REVISE AND RESUBMIT
<input type="checkbox"/> SUBMIT SPECIFIED ITEM	

This review is only for general conformance with the design concept of the project and general compliance with the information given in the Contract Documents. Corrections or comments made during this review do not relieve the contractor from compliance with the requirements of the plans and specifications. Approval of a specific item shall not include approval of the assembly of which the item is a component. Contractor is responsible for: dimensions to be confirmed and correlated at the jobsite; information that pertains solely to the fabrication process or to the means, methods, techniques, sequences and procedures of construction; coordination of the work of all trades; and for performing all work in a safe and satisfactory manner.

DATE 02/29/2016 BY CHRIS PITMAN

cbt 617 262 4354 cbtarchitects.com
110 canal street boston, ma 02114

JOB # 147021

Architect's Stamp

CONTRACTOR TO FIELD VERIFY ALL EXISTING M.O.'S

WINDOW INSTALL GUIDELINES SAME AS 25 BEACON ST.

Engineer's Stamp



1 North Elevation
1/4" = 1'-0"

2 South Elevation
1/4" = 1'-0"

REVISIONS

#	DATE	DESCRIPTION

25 BEACON
25 BEACON STREET/ 6-7 MT VERNON STREET BOSTON, MA 02108

cbt 617 262 4354 cbtarchitects.com
110 canal street boston, ma 02114

CONSTRUCTION DOCUMENTS

6-7 MOUNT VERNON
EXTERIOR BUILDING ELEVATIONS -
NORTH & SOUTH

SCALE 1/4" = 1'-0" PROJECT # 147021.00 DATE ISSUED 04.15.2015

A210



ROOF
155' - 6 7/16"

MV6 LEVEL 4
140' - 6"

MV6 LEVEL 3
130' - 4"

MV6 LEVEL 2
119' - 8 1/4"

MV6 LEVEL 1
107' - 0 3/4"

JOY PLACE

COURTYARD
95' - 0"

ROOF
155' - 6 7/16"

MV6 LEVEL 4
140' - 6"

MV6 LEVEL 3
130' - 4"

MV6 LEVEL 2
119' - 8 1/4"

MV6 LEVEL 1
107' - 0 3/4"

COURTYARD
95' - 0"

3 East Elevation
1/8" = 1'-0"

REVISIONS #	DATE	DESCRIPTION

25 BEACON
25 BEACON STREET/ 6-7 MT VERNON STREET BOSTON, MA 02108

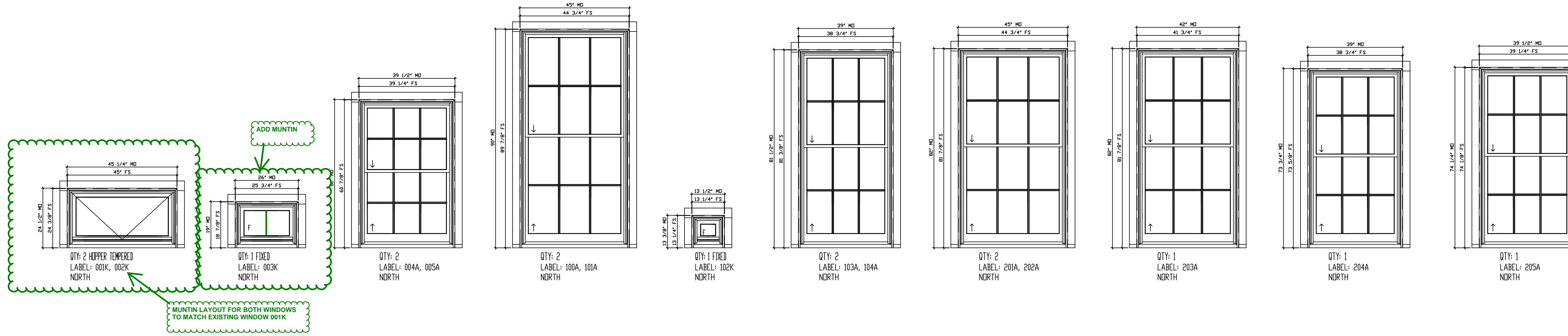
cbt 617 262 4354 cbtarchitects.com
110 canal street boston, ma 02114

CONSTRUCTION DOCUMENTS

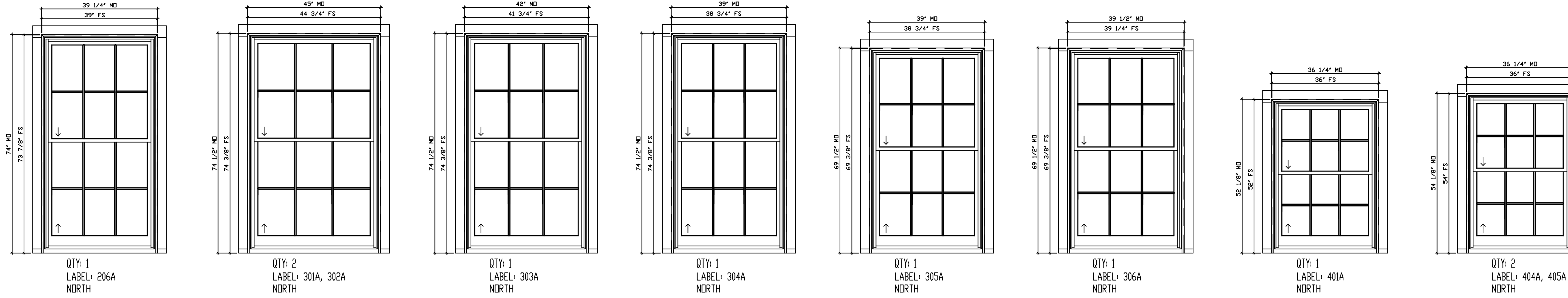
6-7 MOUNT VERNON
EXTERIOR BUILDING ELEVATION - EAST

SCALE 1/4" = 1'-0" PROJECT # 147021.00 DATE ISSUED 04.15.2015

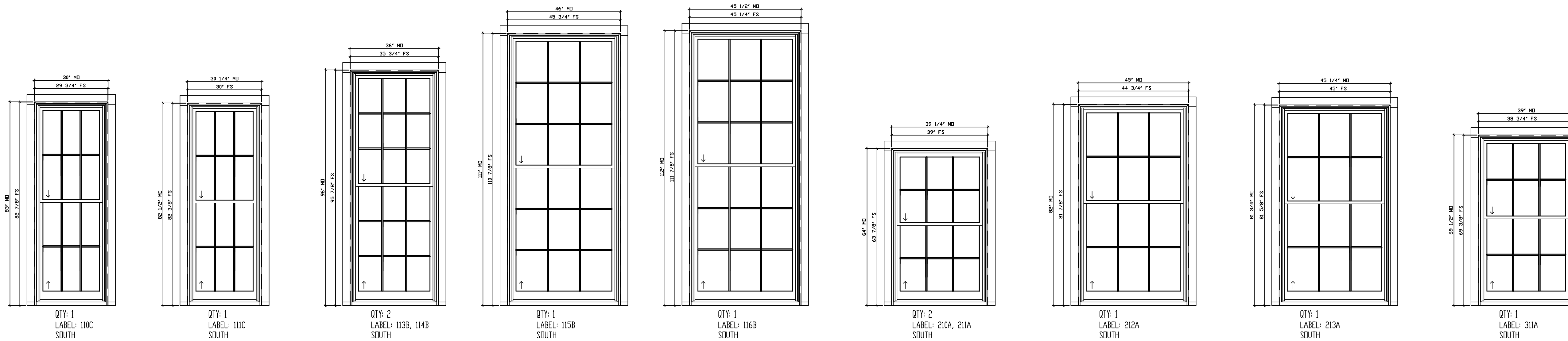
A211



BELISLE WINDOWS EXTERIOR ELEVATIONS (NORTH)
SCALE: 1/2" = 1'- 0"



BELISLE WINDOWS EXTERIOR ELEVATIONS (NORTH)
SCALE: 1/2" = 1'- 0"



BELISLE WINDOWS EXTERIOR ELEVATIONS (SOUTH)
SCALE: 1/2" = 1'- 0"

MATERIAL: WINDOW: WINDOR RD COR. DOOR: ARON WINDOW (AW) GLASS: 3/4" TOTAL IGL: LOWE (EPS) + ARGON IGL, STANDARD GLASS THICKNESS AT INT. AND EXT. LITE, BLACK SPACER, TEMPERED AS INDICATED.

SCREEN: BLACK HALF ALUMINUM FRAME SCREEN WITH CLEARVIEW MESH

JAMB: 6 9/16" AT WINDOWS AND DOORS

SASH: 1 3/4" THICK AT WINDOWS, 2 1/4" AT DOORS

DOOR HARDWARE: - US10B SOLID BRASS BALL BEARING HINGES WITH FLAT TIPS
- MULTI-POINT LOCK MECHANISM ONLY (TRIM BY OTHERS)

MUNTINS: - CUSTOM 5/8" SOL MUNTINS WITH BLACK SPACER BARS

FINISH: - PRIMED INTERIOR, PAINTED EXTERIOR (BLACK - GENEX 505 TO MATCH SCREEN COLOR - PFB SAMPLE SUBMITTED)

CASING: - 3/4" X 4" FACTORY INSTALLED EXTERIOR FLAT CASING
- CUSTOM BRICKMOLD TO MATCH EXISTING (SHIPPED LOOSE)

PROJECT: 6-7 MOUNT VERNON

PROJECT: PROPOSAL #11187

DELIVERY ADDRESS: BOSTON, MA, USA

DRAWN BY: Kevin Thibault

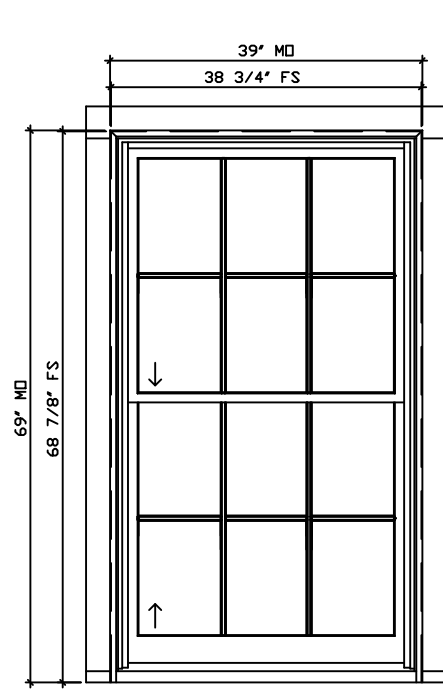
MANUFACTURER: Belisle Architectural Doors and Windows
56 East Gauvin St., St-Jean-De-Dieu, QC, Canada, G0L 3M0
(Tel.) 866-851-5113 (Toll Free) (Fax) 418-963-2200

REPRESENTATIVE: FREDDY MAGUIRE

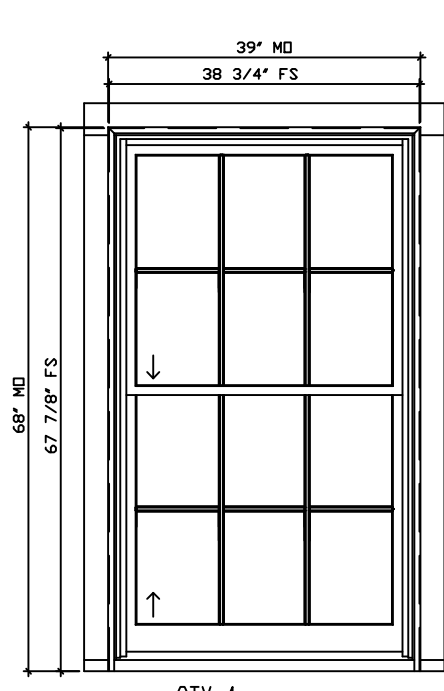
BUILDER: SEA-DAR CONSTRUCTION

1st Submittal:
AUGUST 17TH, 2015
REVISED: JANUARY 12TH, 2016

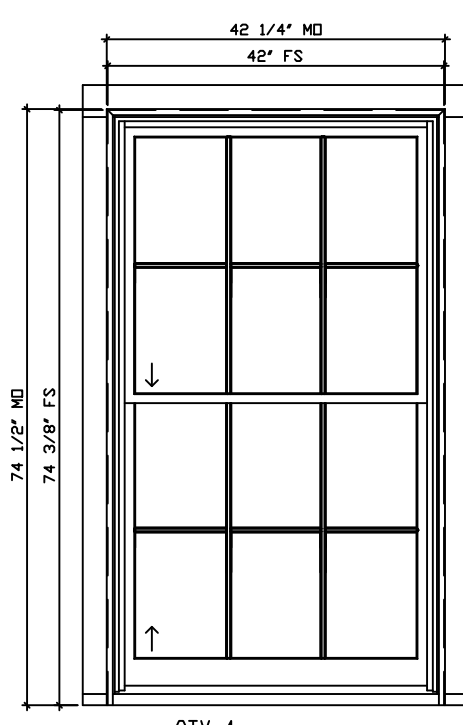
PAGE: 1



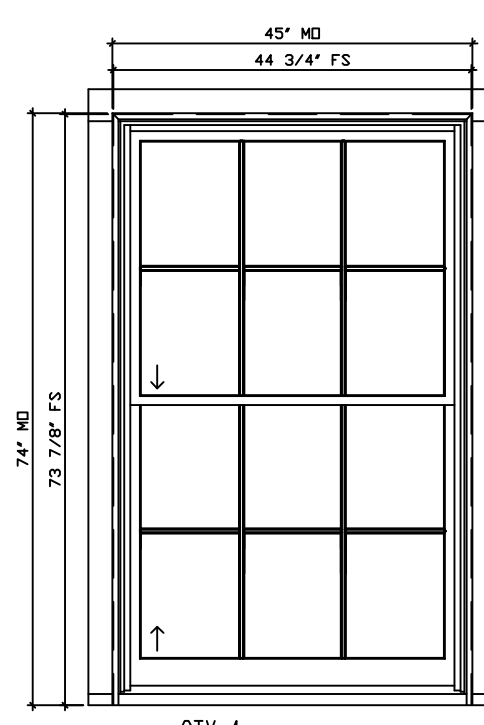
QTY: 1
LABEL: 312A
SOUTH



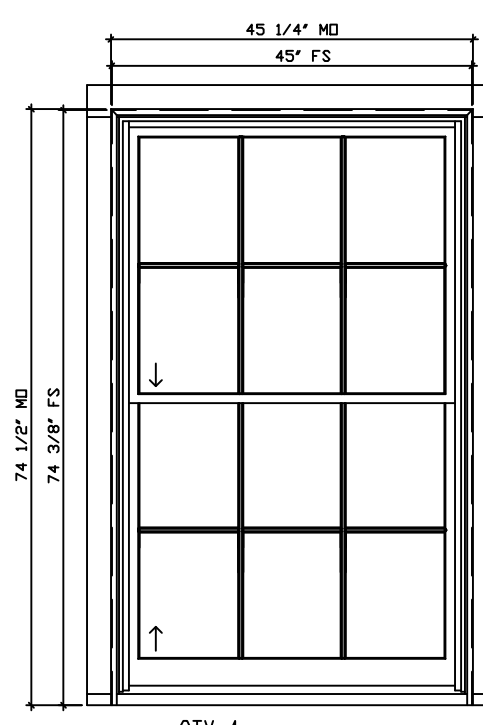
QTY: 1
LABEL: 313A
SOUTH



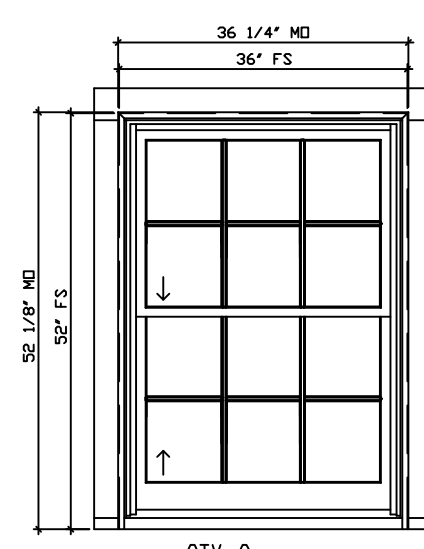
QTY: 1
LABEL: 314A
SOUTH



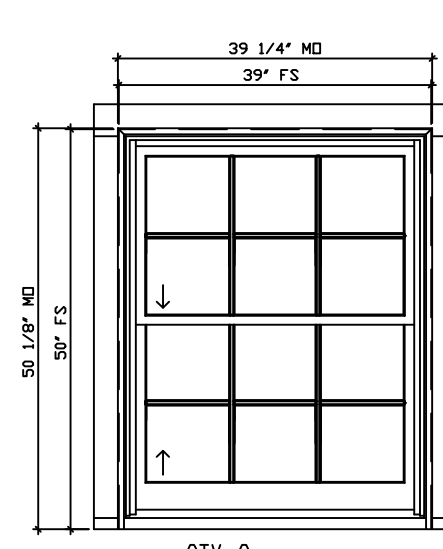
QTY: 1
LABEL: 315A
SOUTH



QTY: 1
LABEL: 316A
SOUTH

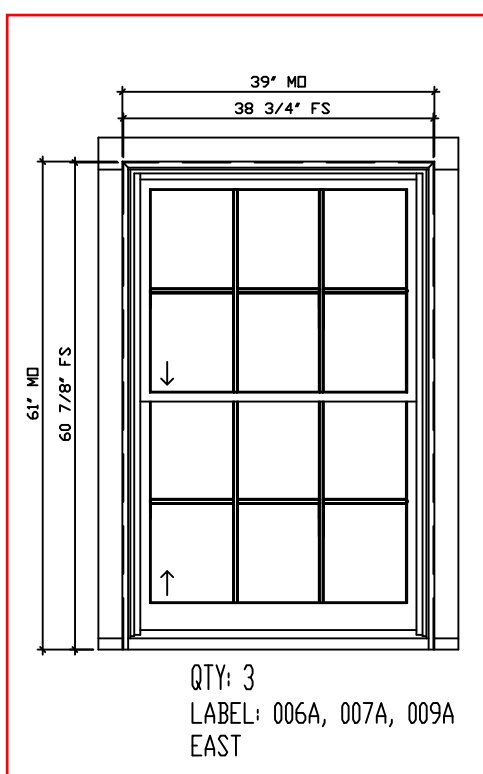


QTY: 2
LABEL: 407A, 408A
SOUTH

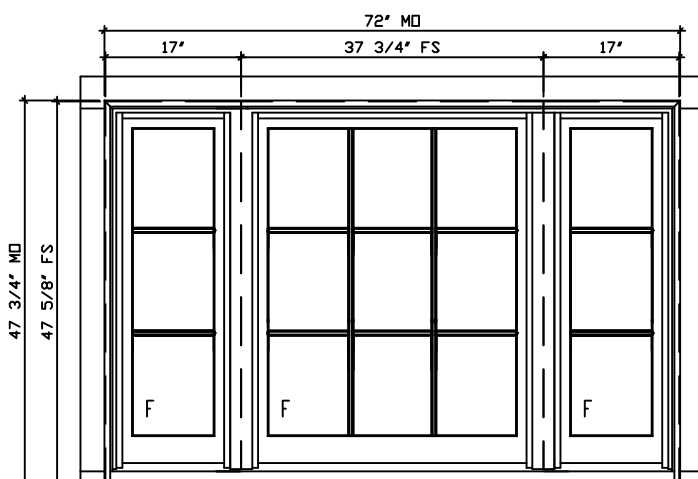


QTY: 2
LABEL: 409A, 410A
SOUTH

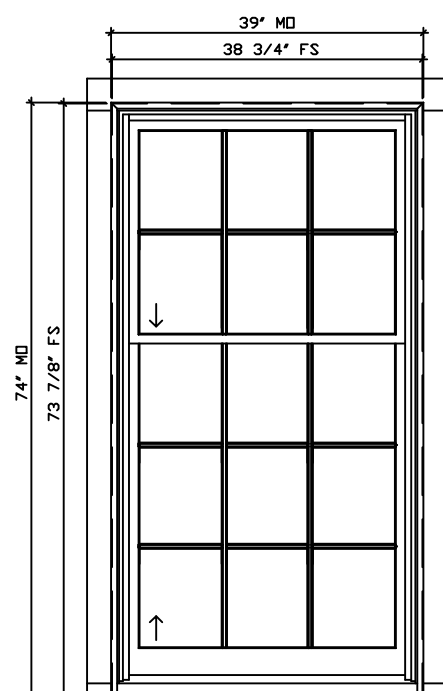
BELISLE WINDOWS EXTERIOR ELEVATIONS (SOUTH)
SCALE: 1/2" = 1'- 0"



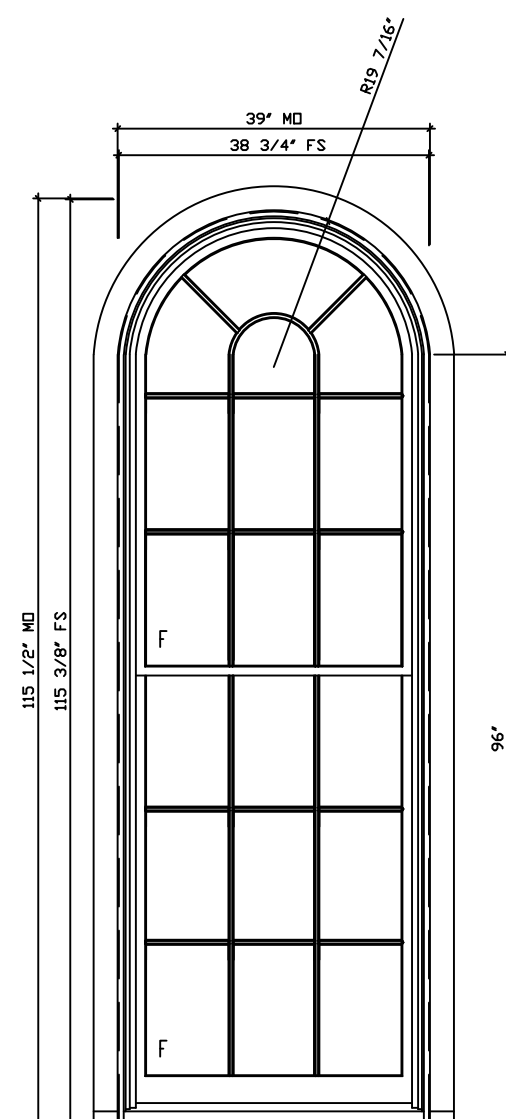
QTY: 3
LABEL: 006A, 007A, 009A
EAST



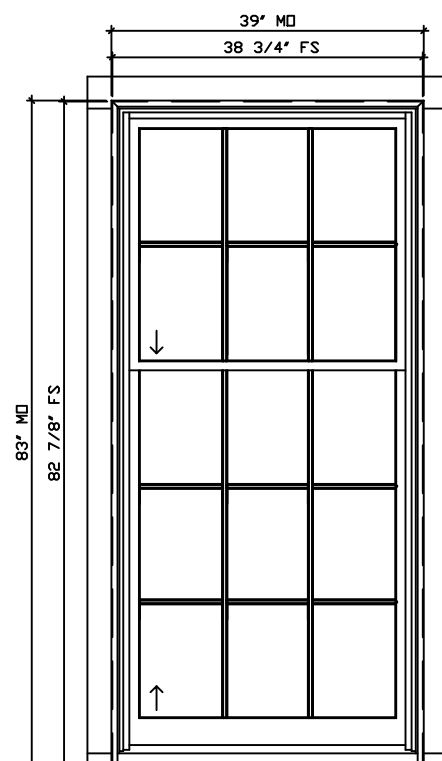
QTY: 1 FIXED 3 WIDE CASEMENT
LABEL: 008A
EAST



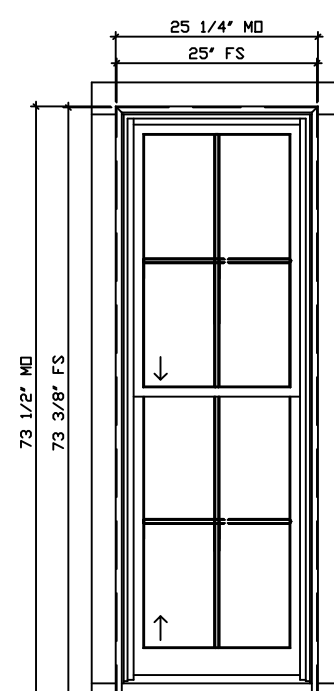
QTY: 3
LABEL: 010A, 011A, 012A
EAST



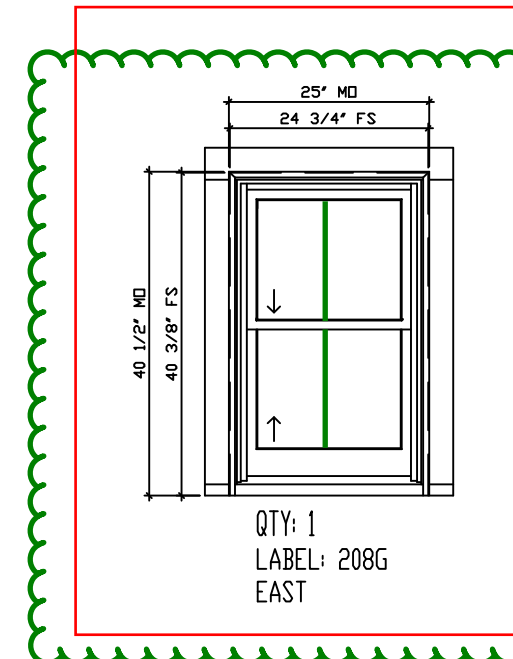
QTY: 1 FIXED DH TEMPERED
LABEL: 1051
EAST



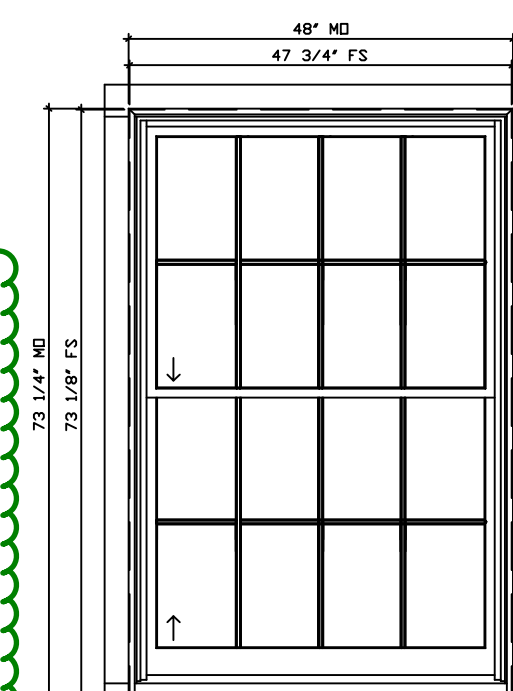
QTY: 3
LABEL: 107E, 108E, 109E
EAST



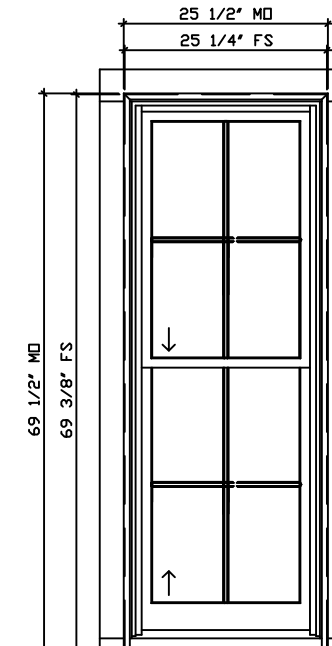
QTY: 1
LABEL: 207F
EAST



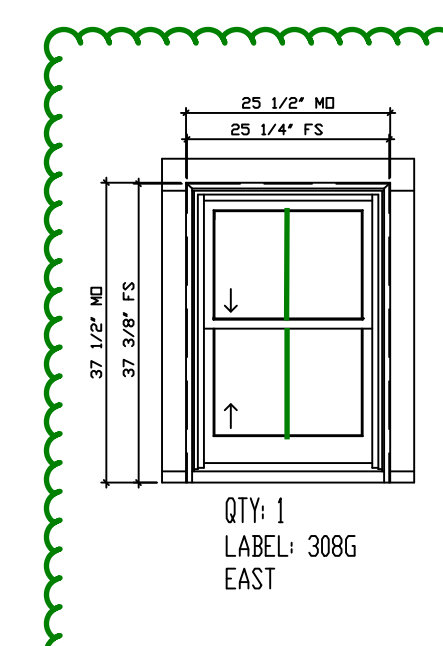
QTY: 1
LABEL: 208G
EAST



QTY: 1
LABEL: 209D
EAST

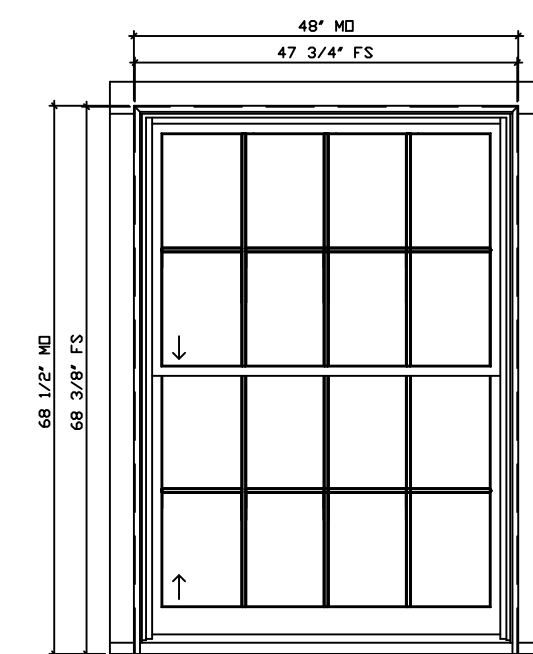


QTY: 2
LABEL: 307F, 310F
EAST

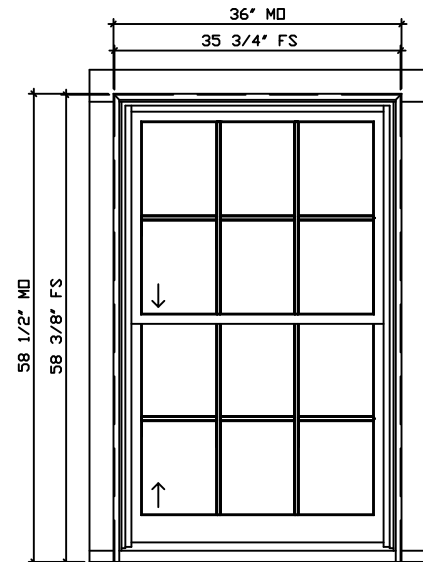


QTY: 1
LABEL: 308G
EAST

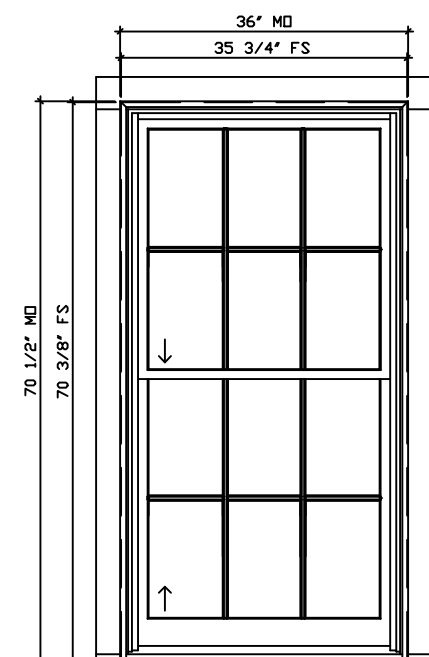
ADD MUNTIN



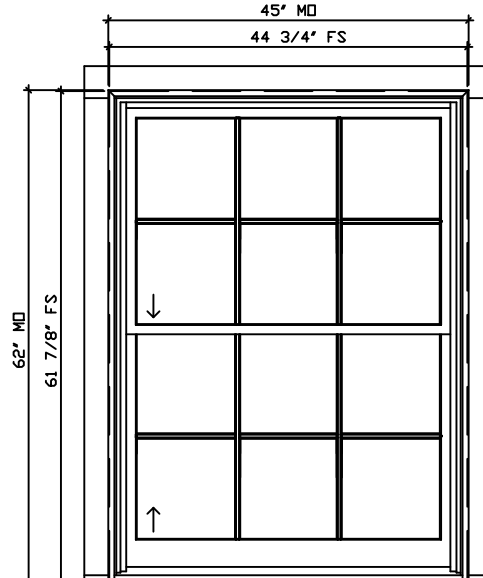
QTY: 1
LABEL: 309D
EAST



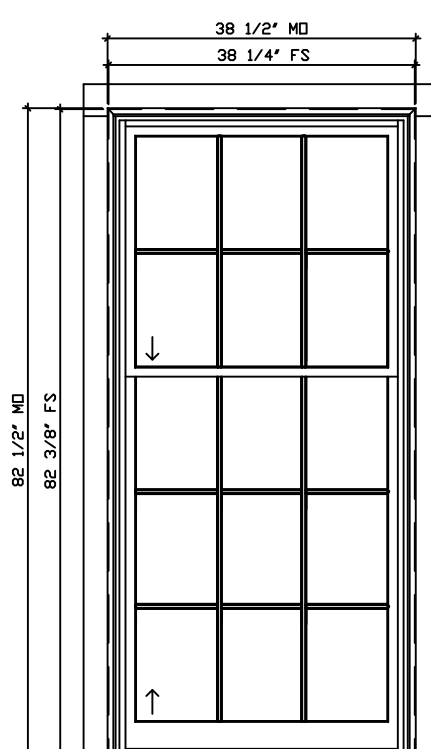
QTY: 1
LABEL: 406A
EAST



QTY: 2
LABEL: 013A, 014A
COURTYARD



QTY: 2
LABEL: 015A, 016A
COURTYARD



QTY: 1 DH
LABEL: MV103
COURTYARD

BELISLE WINDOWS EXTERIOR ELEVATIONS (EAST)
SCALE: 1/2" = 1'- 0"

BELISLE WINDOWS EXTERIOR ELEVATIONS (COURTYARD)
SCALE: 1/2" = 1'- 0"

MATERIAL: WINDOW: WINDOR RD. DOOR: ARON WINDOW (AW) GLASS : 3/4" TOTAL IGU: LOWE (EPS) + ARGON IGU, STANDARD GLASS THICKNESS AT INT. AND EXT. LITE, BLACK SPACER, TEMPERED AS INDICATED.
SCREEN: BLACK HALF ALUMINUM FRAME SCREEN WITH CLEARVIEW MESH
JAMB: 6 9/16" AT WINDOWS AND DOORS
SASH: 1 3/4" THICK AT WINDOWS, 2 1/4" AT DOORS

CASING: - 3/4" X 4" FACTORY INSTALLED EXTERIOR FLAT CASING - CUSTOM BRICKMOLD TO MATCH EXISTING (SHIPPED LOOSE)

DOOR HARDWARE: - US10B SOLID BRASS BALL BEARING HINGES WITH FLAT TIPS - MULTI-POINT LOCK MECHANISM ONLY (TRIM BY OTHERS)
MUNTINS: - CUSTOM 5/8" SOL MUNTINS WITH BLACK SPACER BARS
FINISH: - PRIMED INTERIOR, PAINTED EXTERIOR (BLACK - GENEX 525 TO MATCH SCREEN COLOR - PFB SAMPLE SUBMITTED)

PROJECT: 6-7 MOUNT VERNON

PROJECT: PROPOSAL #11187

DELIVERY ADDRESS: BOSTON, MA, USA

DRAWN BY: Kevin Thibault

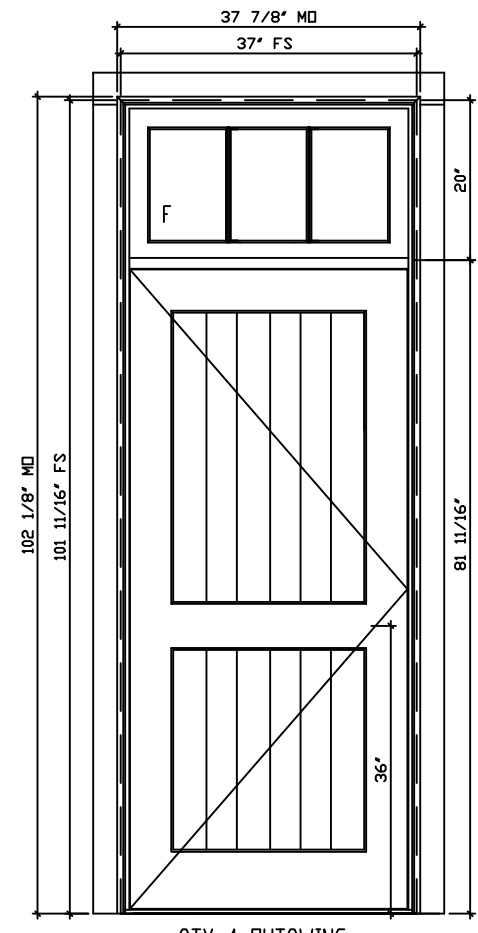
MANUFACTURER: Belisle Architectural Doors and Windows
56 East Gauvin St., St-Jean-De-Dieu, QC, Canada, G0L 3M0
(Tel.) 866-851-5113 (Toll Free) (Fax) 418-963-2200

REPRESENTATIVE: FREDDY MAGUIRE

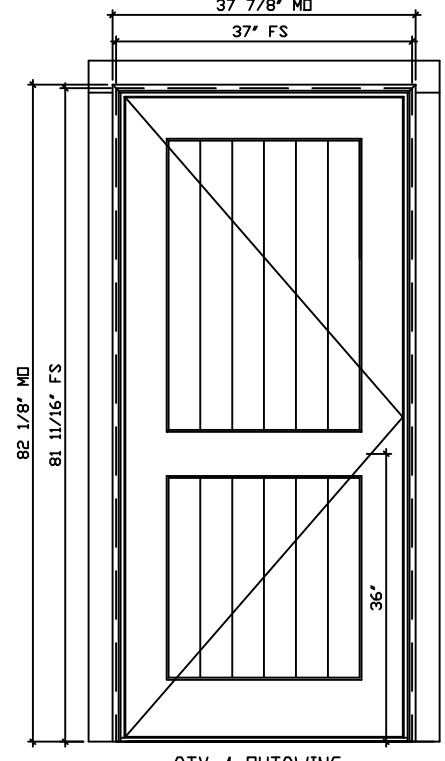
BUILDER: SEA-DAR CONSTRUCTION

1st Submittal:
AUGUST 17TH, 2015
REVISID:
JANUARY 12TH, 2016

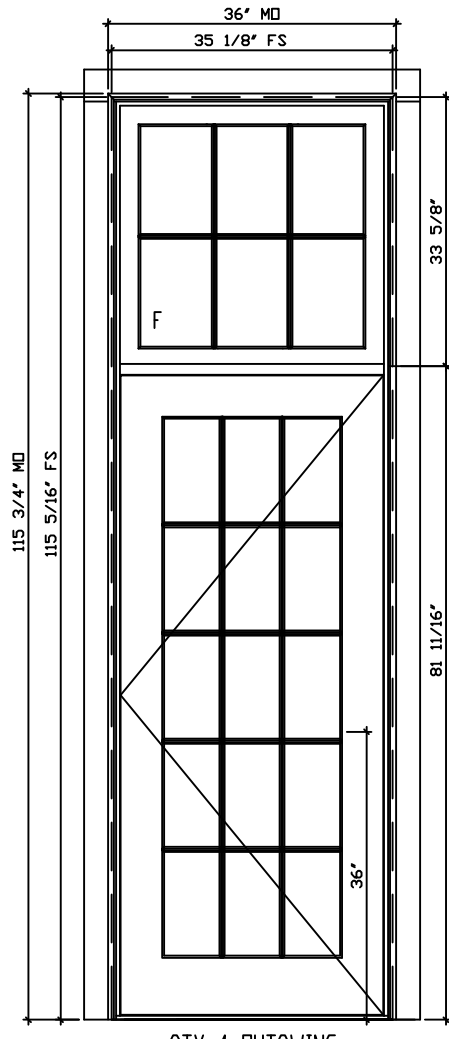
PAGE: 2



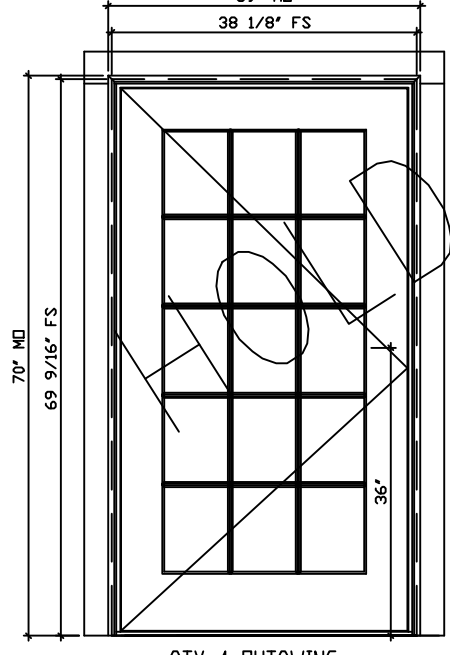
QTY: 1 OUTSWING
LABEL: MV003B
SOUTH



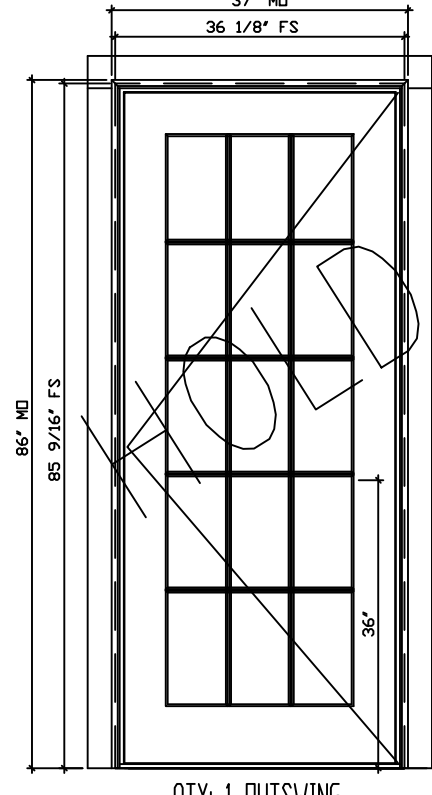
QTY: 1 OUTSWING
LABEL: MV006B
SOUTH



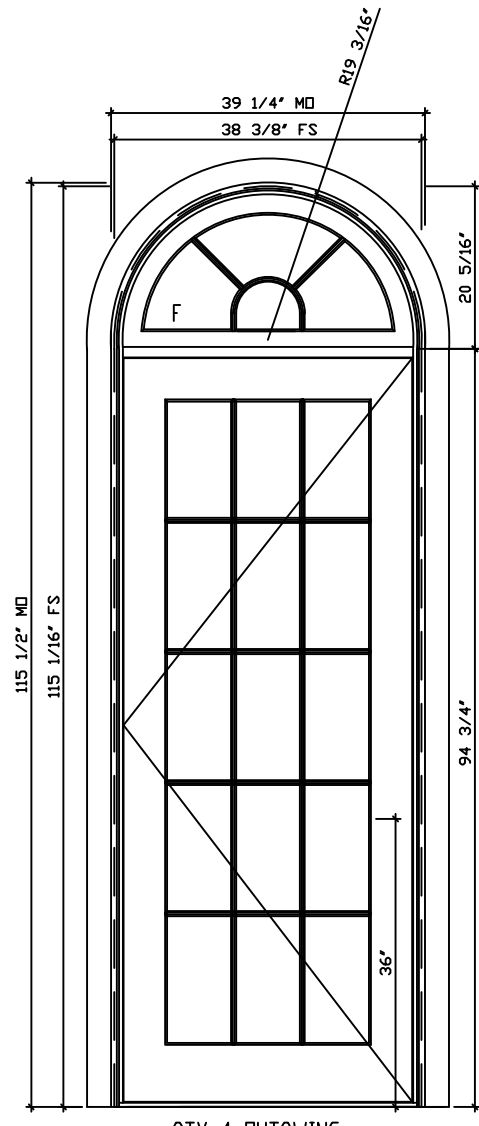
QTY: 1 OUTSWING
LABEL: MV104
SOUTH



QTY: 1 OUTSWING
LABEL: MV200
SOUTH



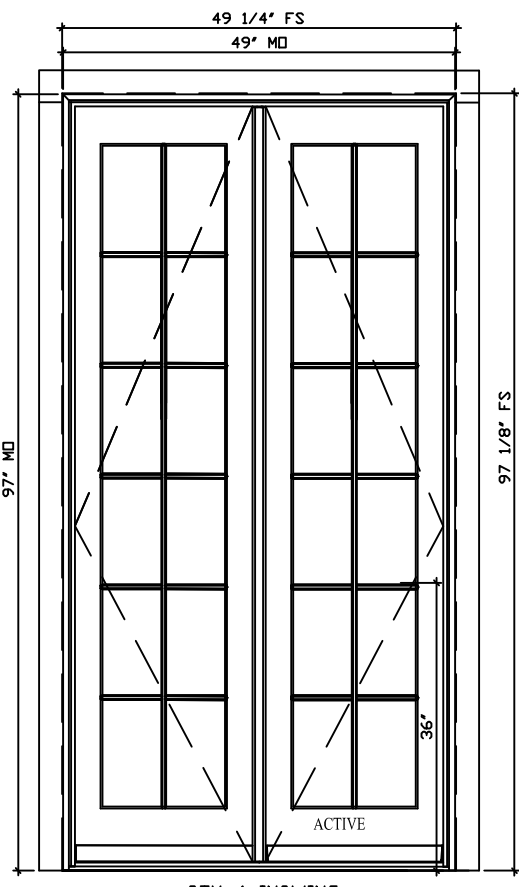
QTY: 1 OUTSWING
LABEL: MV006
COURTYARD



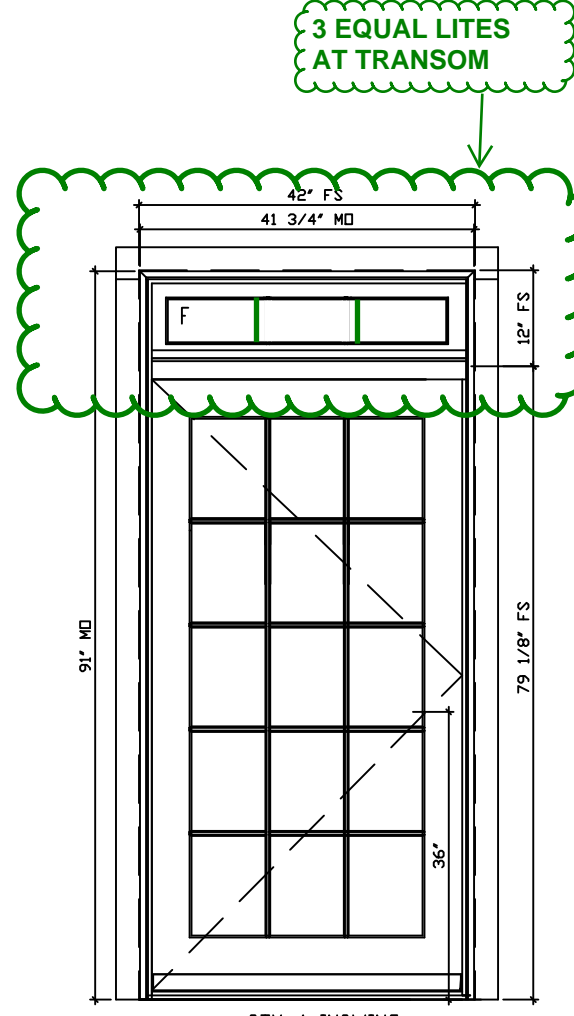
QTY: 1 OUTSWING
LABEL: MV001 W/ 10SJ TRANSOM
EAST

BELISLE OUTSWING DOORS EXTERIOR ELEVATIONS
SCALE: 1/2" = 1'-0"

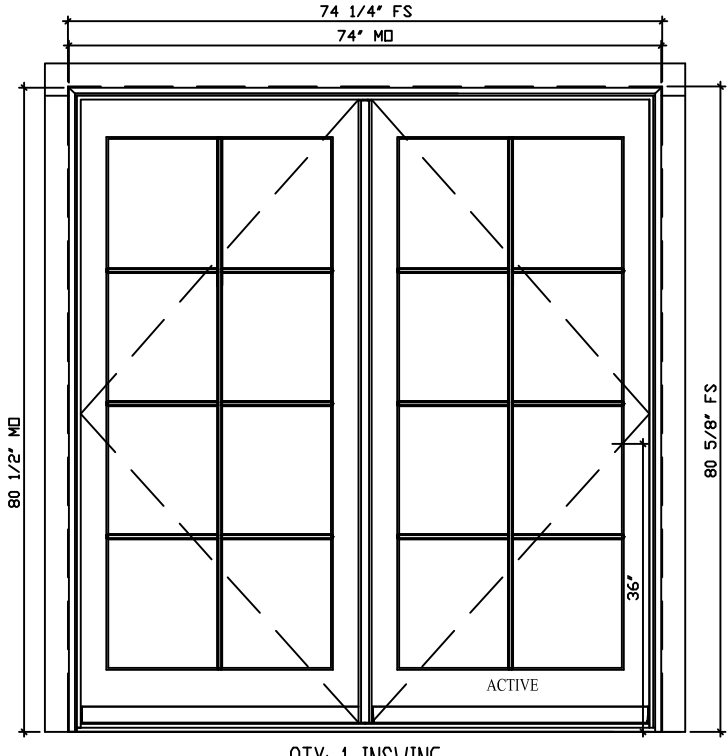
TRANSOM AND SIDELIGHT
DETAILING TO BE SIMILAR



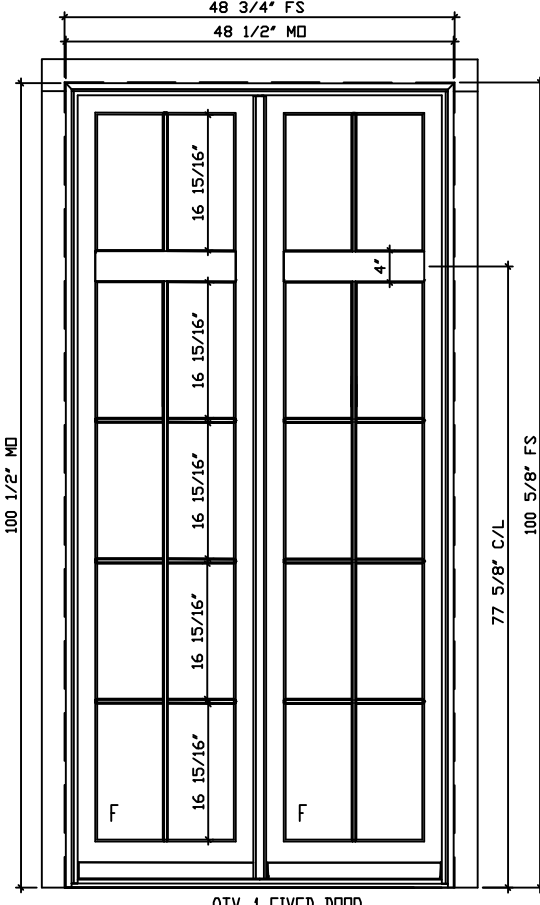
QTY: 1 INSWING
LABEL: MV102
SOUTH



QTY: 1 INSWING
LABEL: MV201
SOUTH



QTY: 1 INSWING
LABEL: MV002
COURTYARD



QTY: 1 FIXED DOOR
LABEL: 112K
SOUTH

TRANSOM AND SIDELIGHT
DETAILING TO BE SIMILAR
BELISLE INSWING DOORS EXTERIOR ELEVATIONS
SCALE: 1/2" = 1'-0"

MATERIAL: WORK: WOOD OR DOOR: DOOR: WOOD (W) GLASS : 3/4" TOTAL IGL: LOWE (EPS) + ARGON IGL, STANDARD GLASS THICKNESS AT INT. AND EXT. LITE, BLACK SPACER, TEMPERED AS INDICATED.
SCREEN: BLACK HALF ALUMINUM FRAME SCREEN WITH CLEARVIEW MESH
JAMB: 6 9/16" AT WINDOWS AND DOORS
SASH: 1 3/4" THICK AT WINDOWS, 2 1/4" AT DOORS

WINDOW HARDWARE: - US10B #4217 ARC SASH LOCK (1)
- US10B #301 ARC SASH LIFTS (2)
- US10B #6 ARC GROMMETS
CASING: - 3/4" X 4" FACTORY INSTALLED EXTERIOR FLAT CASING
- CUSTOM BRICKMOLD TO MATCH EXISTING (SHIPPED LOOSE)

DOOR HARDWARE: - US10B SOLID BRASS BALL BEARING HINGES WITH FLAT TIPS
- MULTI-POINT LOCK MECHANISM ONLY (TRIM BY OTHERS)
MUNTINS: - CUSTOM 5/8" SOL MUNTINS WITH BLACK SPACER BARS
FINISH: - PRIMED INTERIOR, PAINTED EXTERIOR
(BLACK - GENIEK 525 TO MATCH SCREEN COLOR - PFB SAMPLE SUBMITTED)

PROJECT: **6-7 MOUNT VERNON**

PROJECT: PROPOSAL #11187

DELIVERY ADDRESS: BOSTON, MA, USA

DRAWN BY: *Kevin Thibault*

MANUFACTURER: **Belisle Architectural Doors and Windows**

56 East Gauvin St., St-Jean-De-Dieu, QC, Canada, G0L 3M0
(Tel.) 866-851-5113 (Toll Free) (Fax) 418-963-2200

REPRESENTATIVE: **FREDDY MAGUIRE**

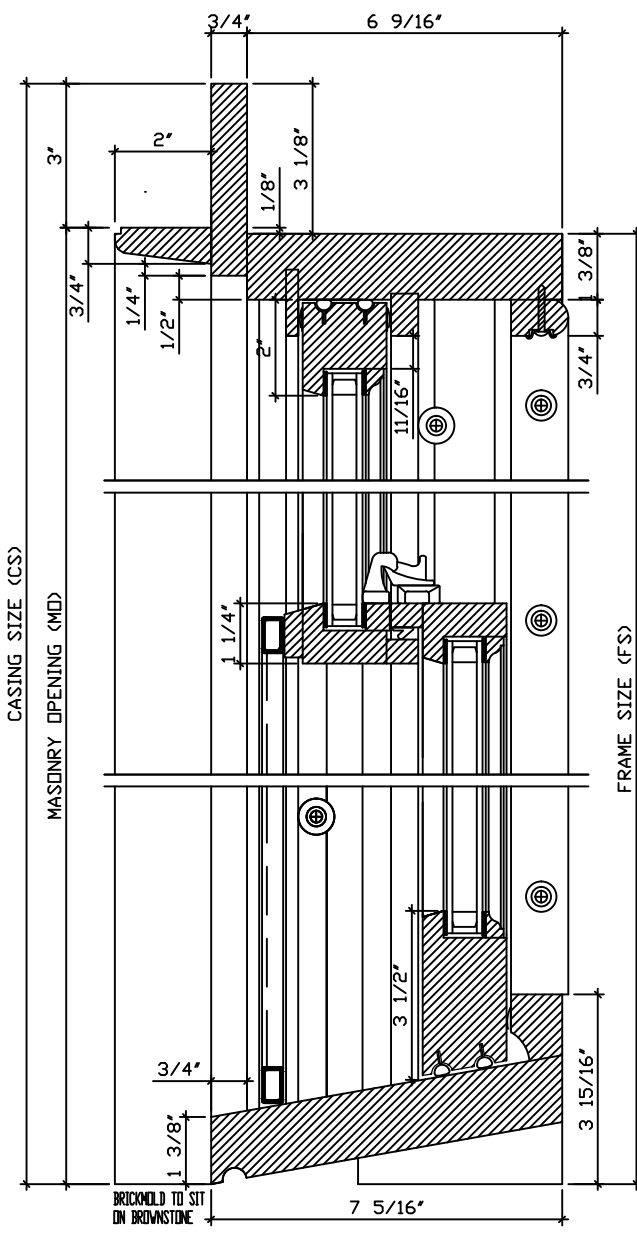
BUILDER: **SEA-DAR CONSTRUCTION**

1st Submittal:

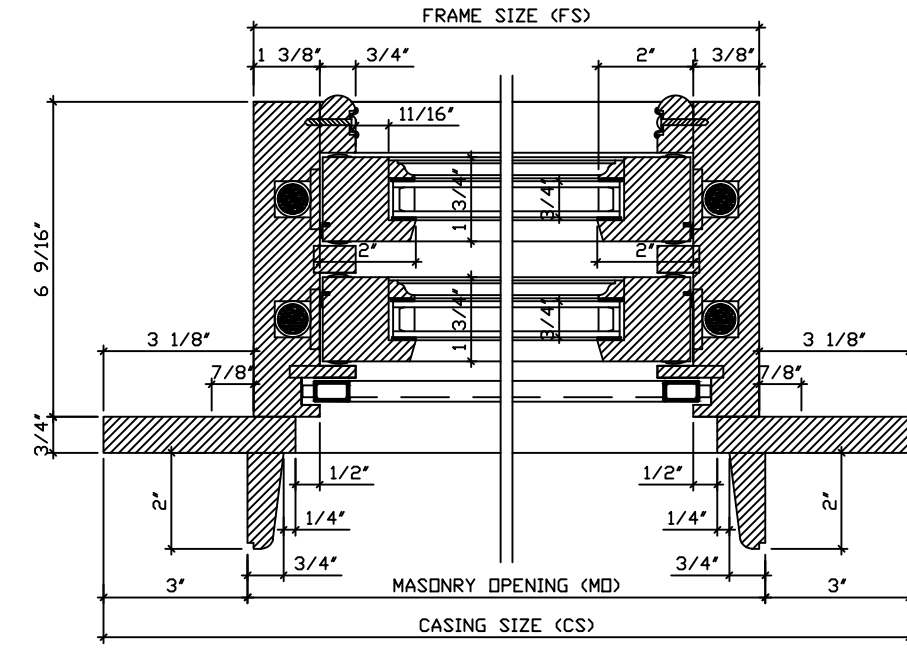
AUGUST 17TH, 2015

REVISED:

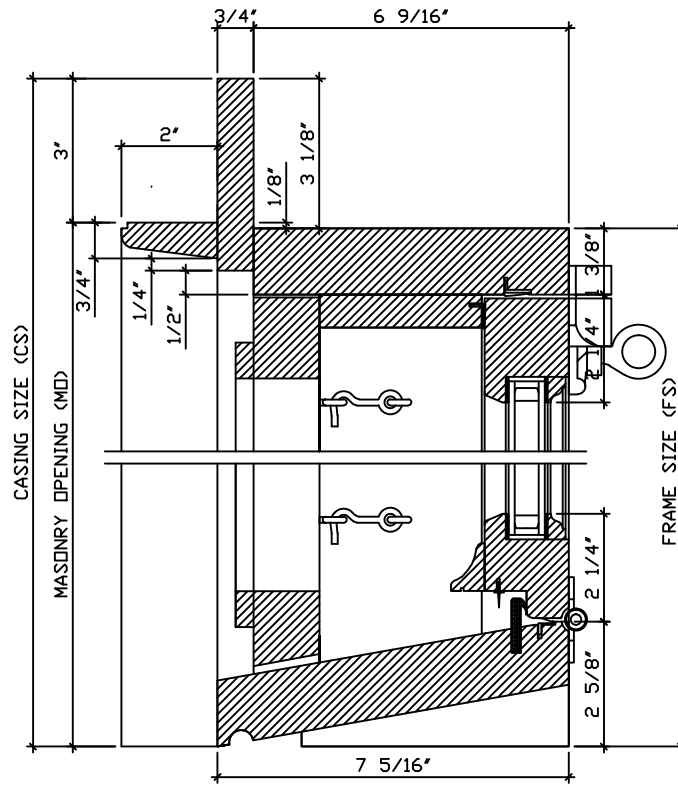
JANUARY 12TH, 2016



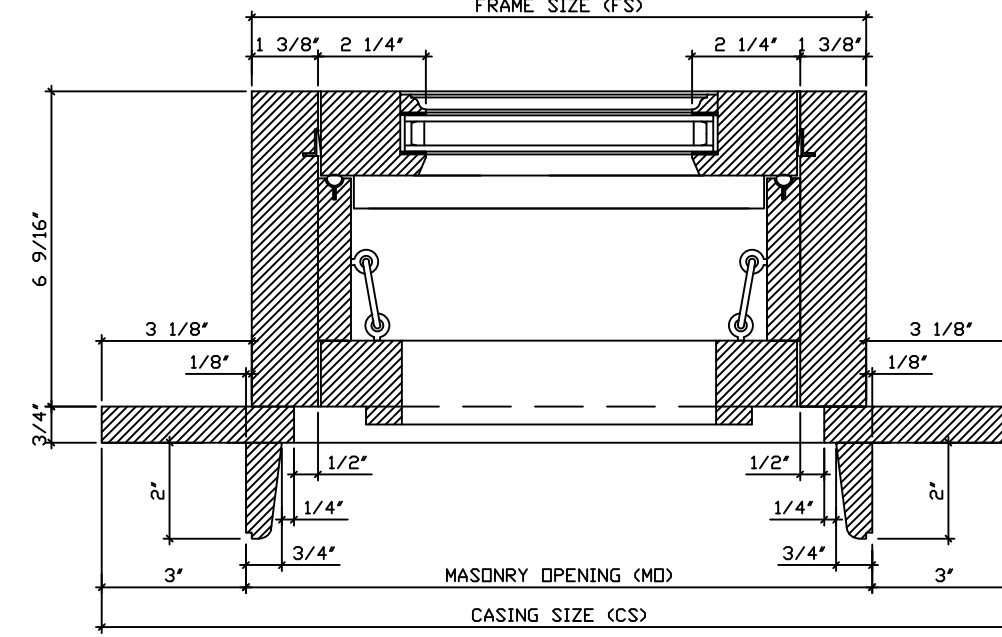
1 TYPICAL DOUBLE HUNG WINDOW VERTICAL SECTION
SCALE: 3" = 1'- 0"



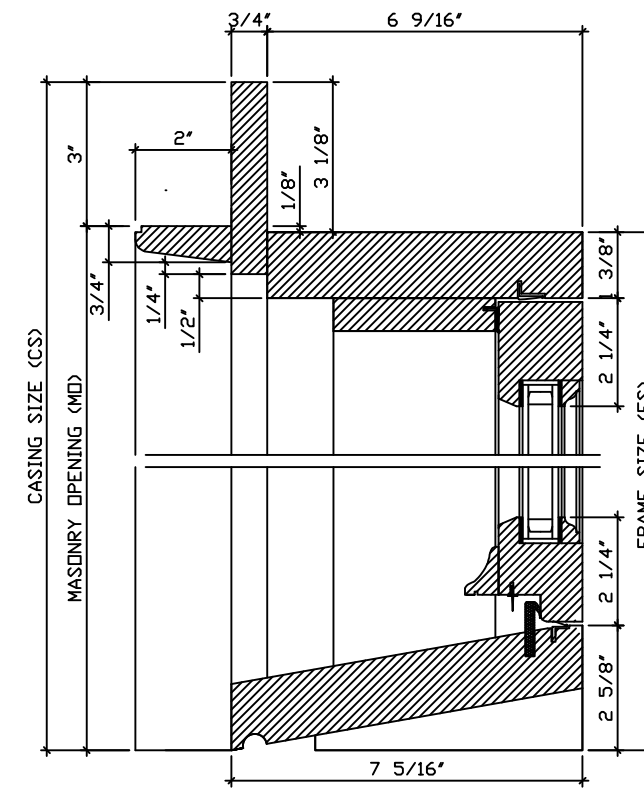
2 TYPICAL DOUBLE HUNG WINDOW PLAN VIEW
SCALE: 3" = 1'- 0"



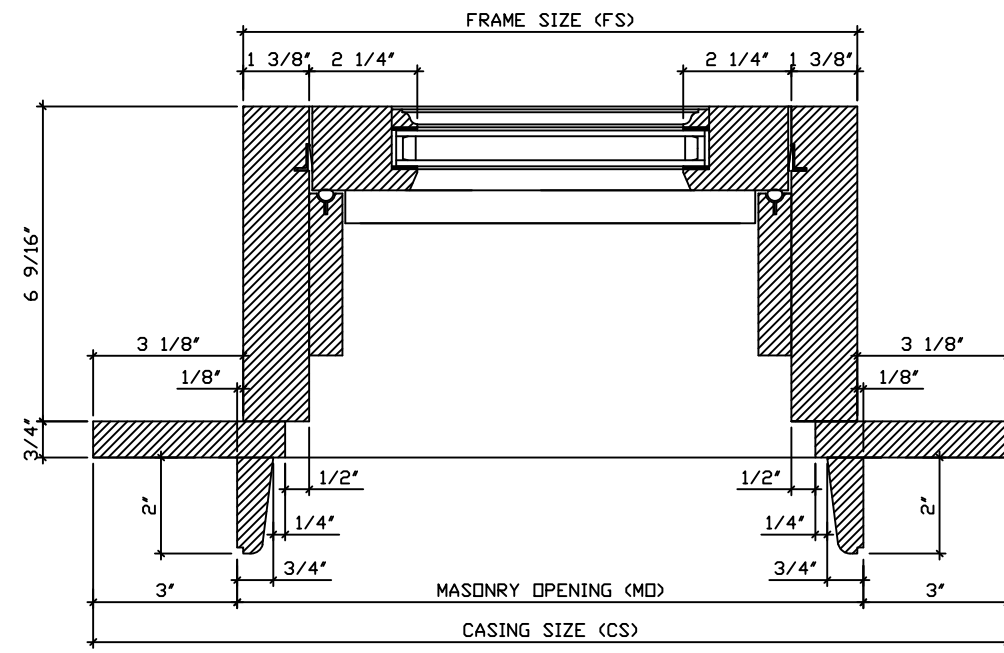
3 TYPICAL HOPPER WINDOW VERTICAL SECTION
SCALE: 3" = 1'- 0"



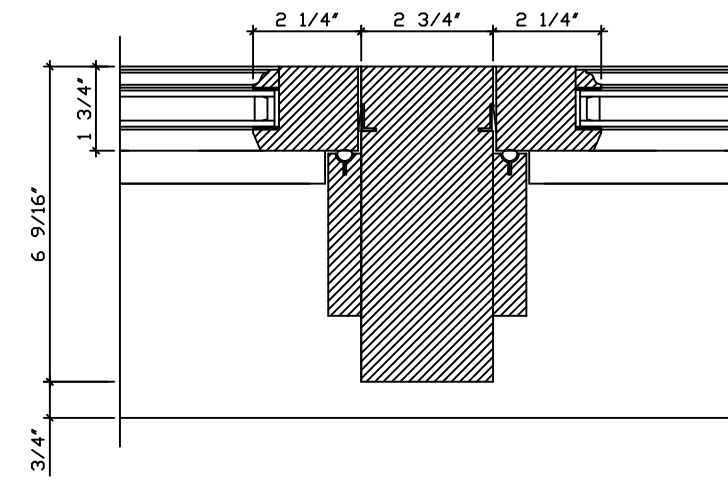
4 TYPICAL HOPPER WINDOW PLAN VIEW
SCALE: 3" = 1'- 0"



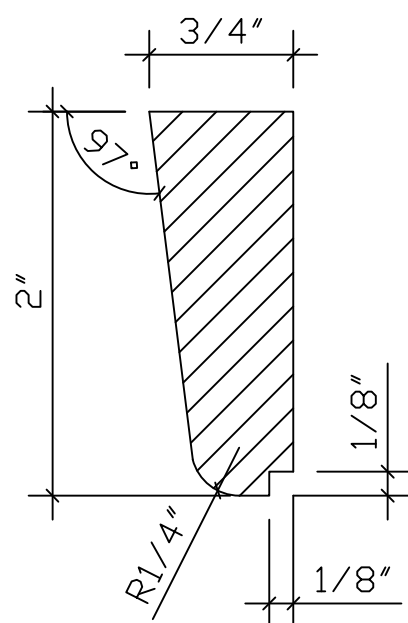
5 TYPICAL FIXED WINDOW VERTICAL SECTION
SCALE: 3" = 1'- 0"



6 TYPICAL FIXED WINDOW PLAN VIEW
SCALE: 3" = 1'- 0"

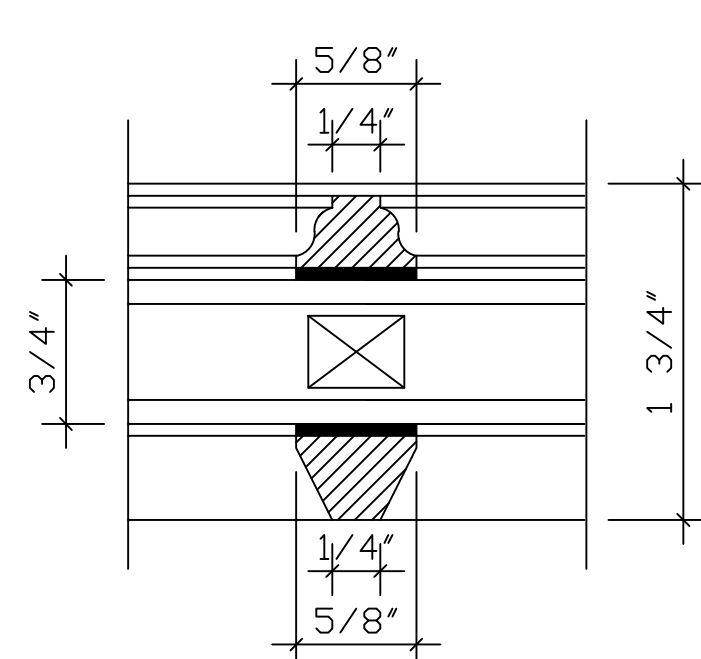


7 TYPICAL FIXED WINDOW MULLION DETAIL
SCALE: 3" = 1'- 0"



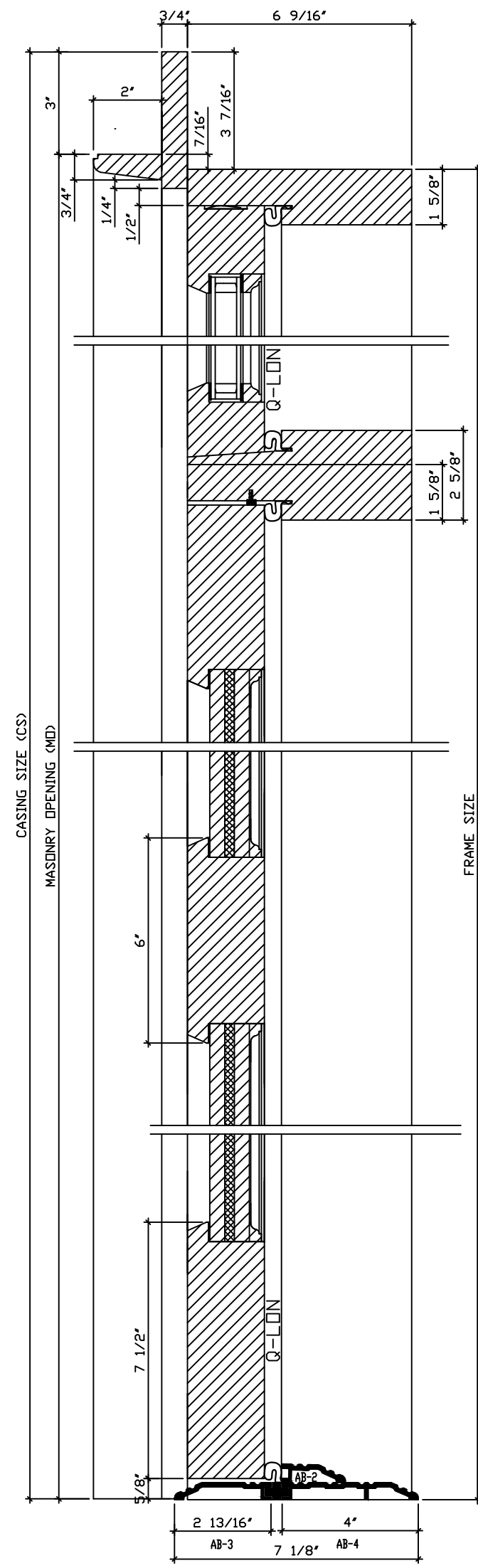
9 TYPICAL SECTION OF CUSTOM BRICKMOLD
SCALE: FULL SCALE

BRICKMOLD



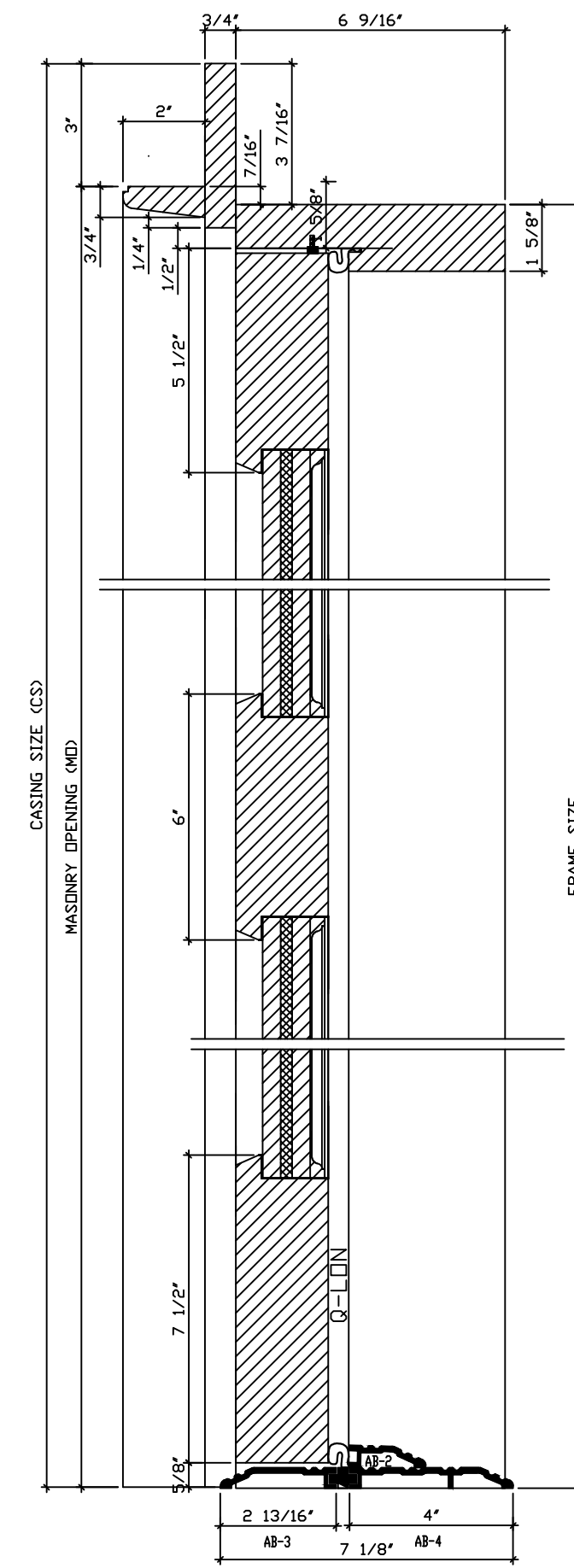
10 TYPICAL SECTION OF WINDOW 5/8" SOL MUNTINS
SCALE: FULL SCALE

MUNTIN

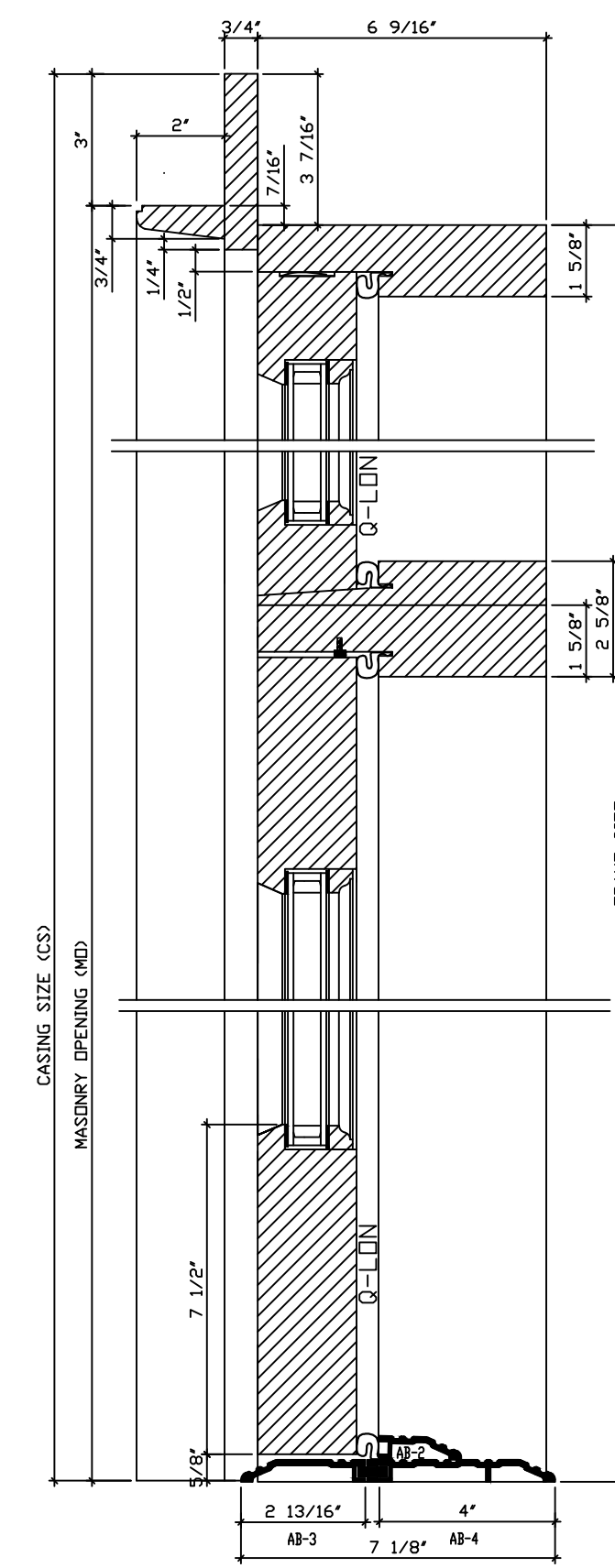


11 OUTSWING DOOR WITH PLANK PANELS AND TRANSOM (VERTICAL)
SCALE: 3" = 1'- 0"

DOOR TO TRANSOM



12 OUTSWING DOOR WITH PLANK PANELS (VERTICAL)
SCALE: 3" = 1'- 0"



13 OUTSWING GLASS DOOR WITH TRANSOM (VERTICAL)
SCALE: 3" = 1'- 0"

MATERIAL: WINDOW AND DOOR: ALUMINUM WINDOW (AW) GLASS : 3/4" TOTAL IGU: LOWE (EPS) + ARGON IGU, STANDARD GLASS THICKNESS AT INT. AND EXT. LITE, BLACK SPACER, TEMPERED AS INDICATED.

SCREEN: BLACK HALF ALUMINUM FRAME SCREEN WITH CLEARVIEW MESH

JAMB: 6 9/16" AT WINDOWS AND DOORS

SASH: 1 3/4" THICK AT WINDOWS, 2 1/4" AT DOORS

WINDOW HARDWARE: - US10B #4217 ARC SASH LOCK (1)
- US10B #301 ARC SASH LIFTS (2)
- US10B #6 ARC GROMMETS
- 3/4" X 4" FACTORY INSTALLED EXTERIOR-FLAT COILING
- CUSTOM BRICKMOLD TO MATCH EXISTING (SHIPPED LOOSE)

DOOR HARDWARE: - US10B SOLID BRASS BALL BEARING HINGES WITH FLAT TIPS
- MULTI-POINT LOCK MECHANISM ONLY (FORM BY OTHERS)
MUNTINS: - CUSTOM 5/8" SOL MUNTINS WITH BLACK SPACER BARS
FINISH: - PRIMED INTERIOR, PAINTED EXTERIOR
(BLACK - GENIEK 205 TO MATCH SCREEN COLOR - PFB SAMPLE SUBMITTED)

PROJECT: 6-7 MOUNT VERNON

PROJECT: PROPOSAL #11187

DELIVERY ADDRESS: BOSTON, MA, USA

DRAWN BY: Kevin Thibault

MANUFACTURER: Belise Architectural Doors and Windows
56 East Gauvin St., St-Jean-De-Dieu, QC, Canada, G0L 3M0
(Tel.) 866-851-5113 (Toll Free) (Fax) 418-963-2200

REPRESENTATIVE: FREDDY MAGUIRE

BUILDER: SEA-DAR CONSTRUCTION

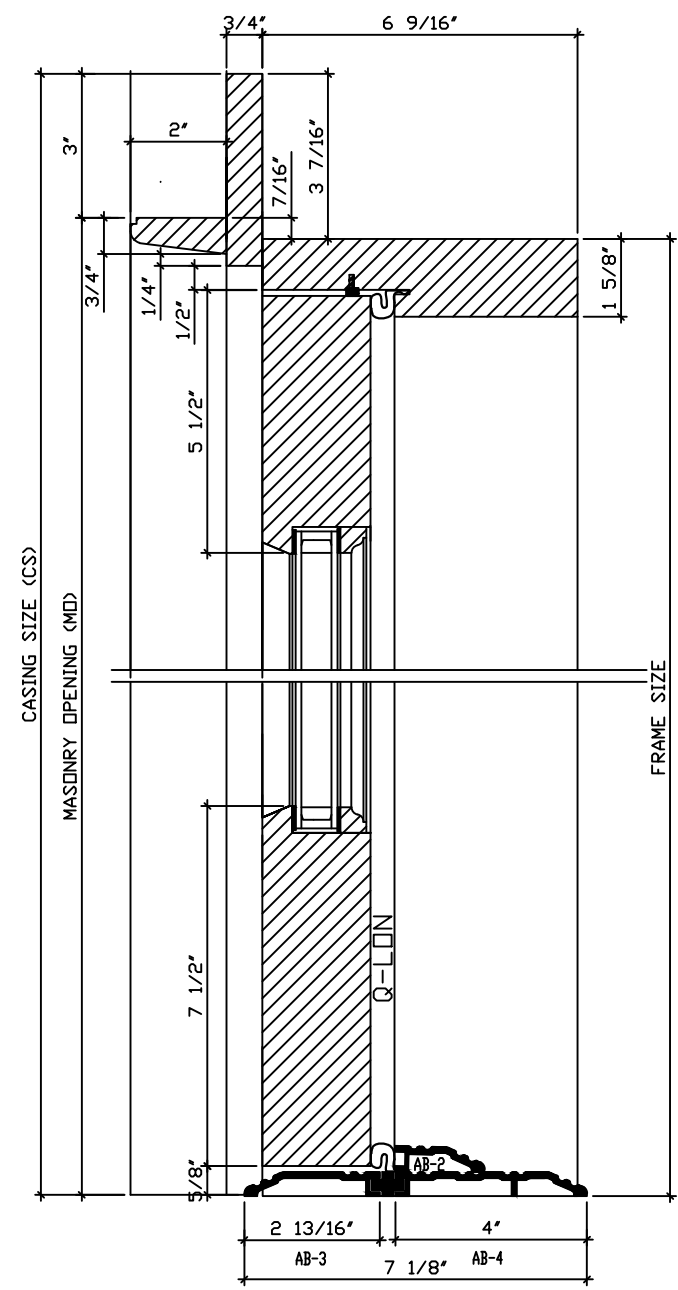
1st Submittal:

AUGUST 17TH, 2015

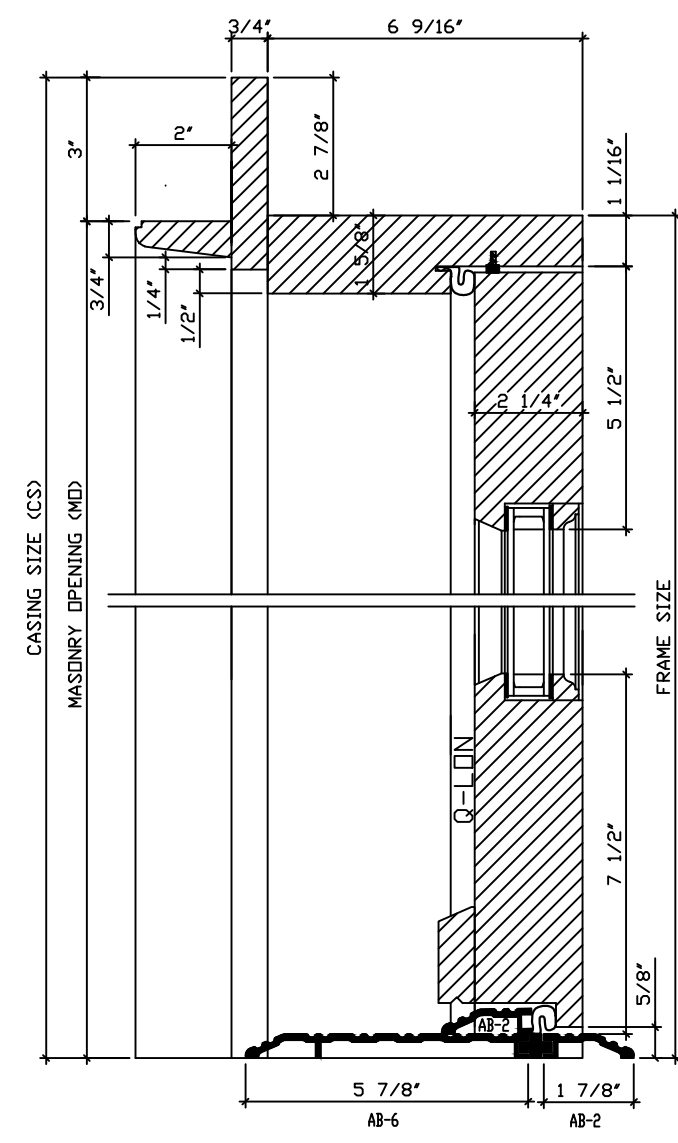
REVISID:

JANUARY 12TH, 2016

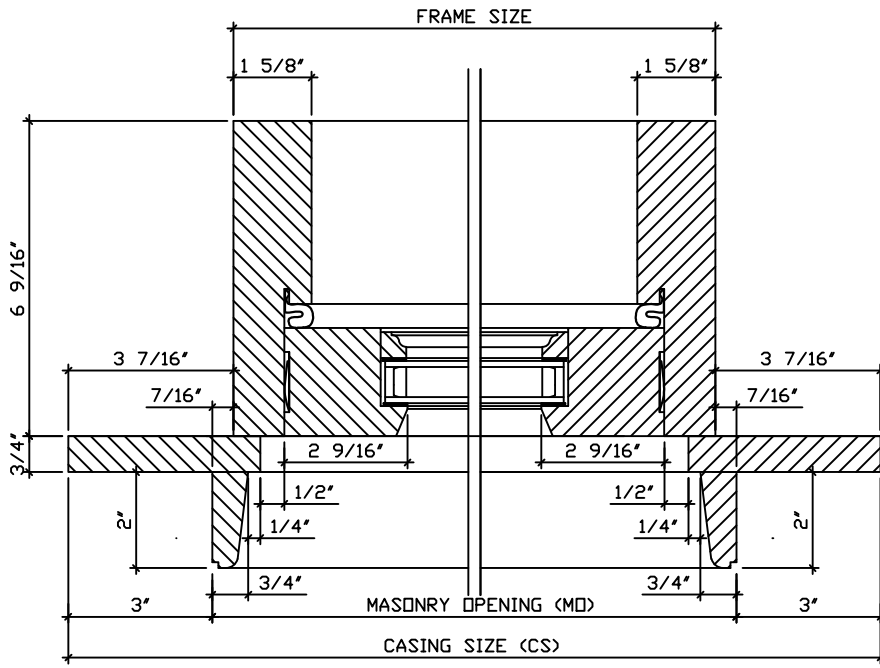
PAGE: 4



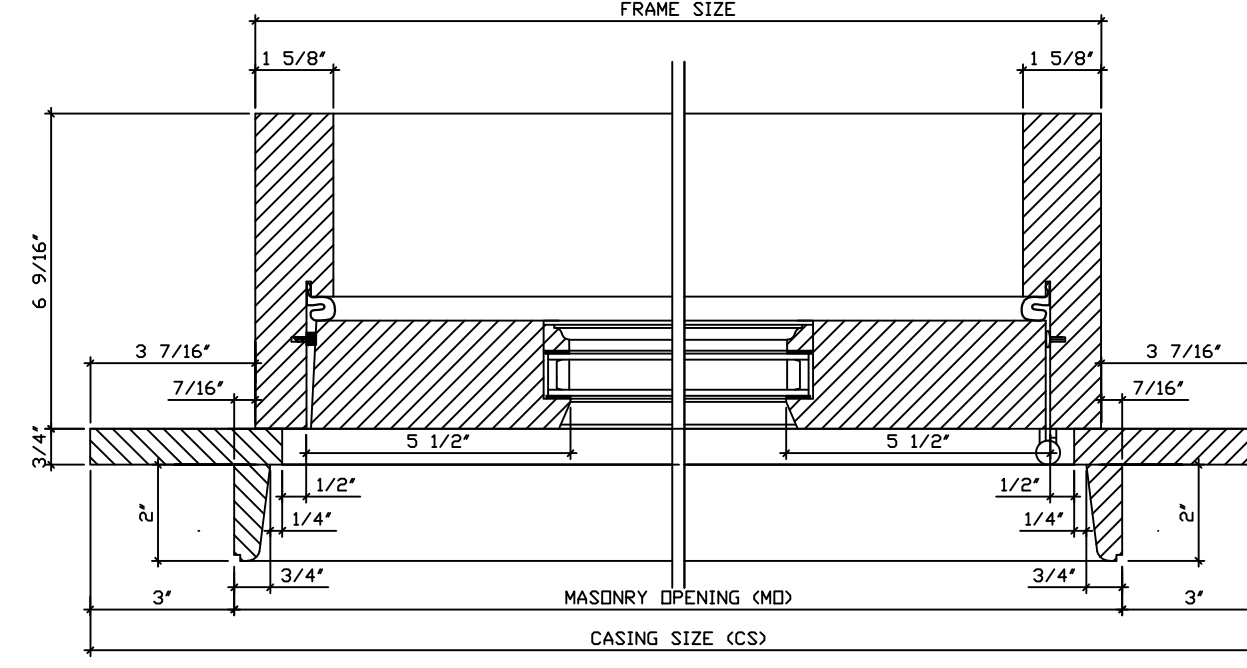
14 OUTSWING GLASS DOOR (VERTICAL)
SCALE: 3" = 1'- 0"



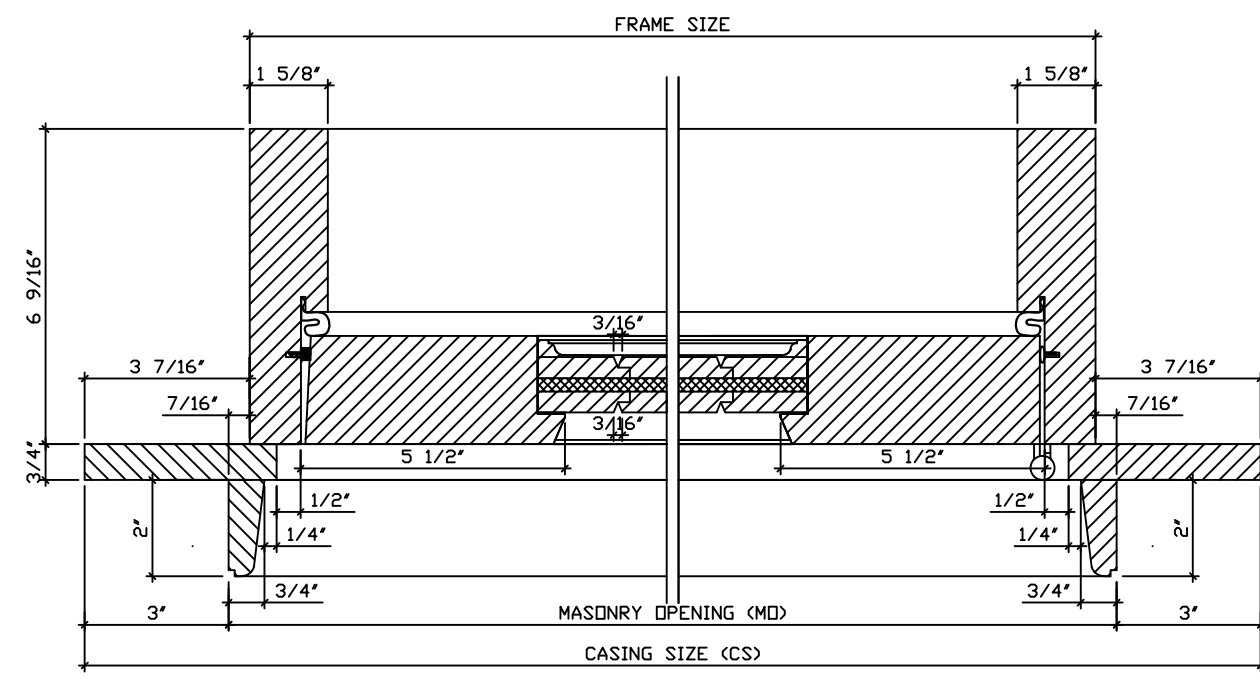
15 INSWING GLASS DOOR (VERTICAL)
SCALE: 3" = 1'- 0"



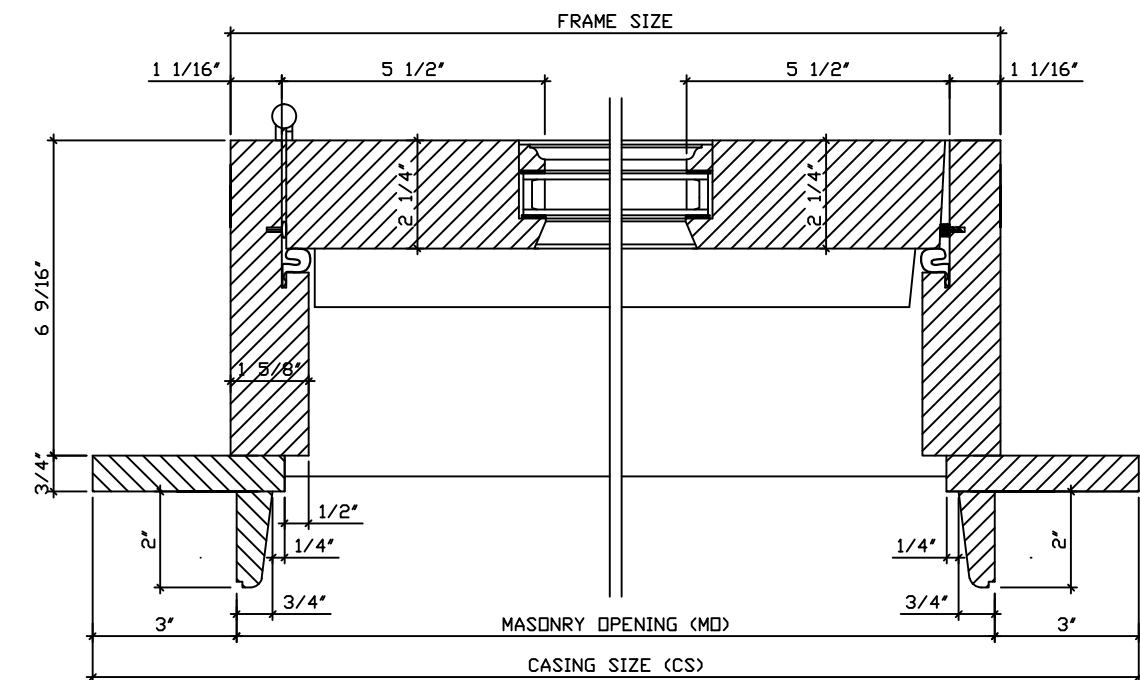
16 OUTSWING DOOR TRANSOM (PLAN VIEW)
SCALE: 3" = 1'- 0"



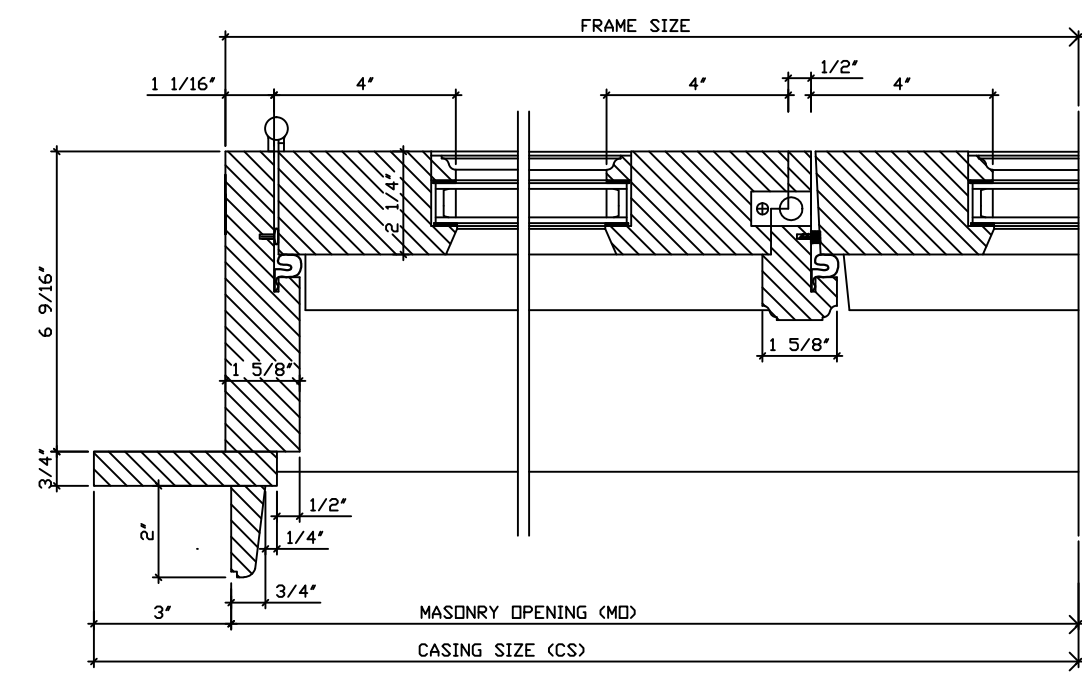
17 OUTSWING GLASS SINGLE DOOR (PLAN VIEW)
SCALE: 3" = 1'- 0"



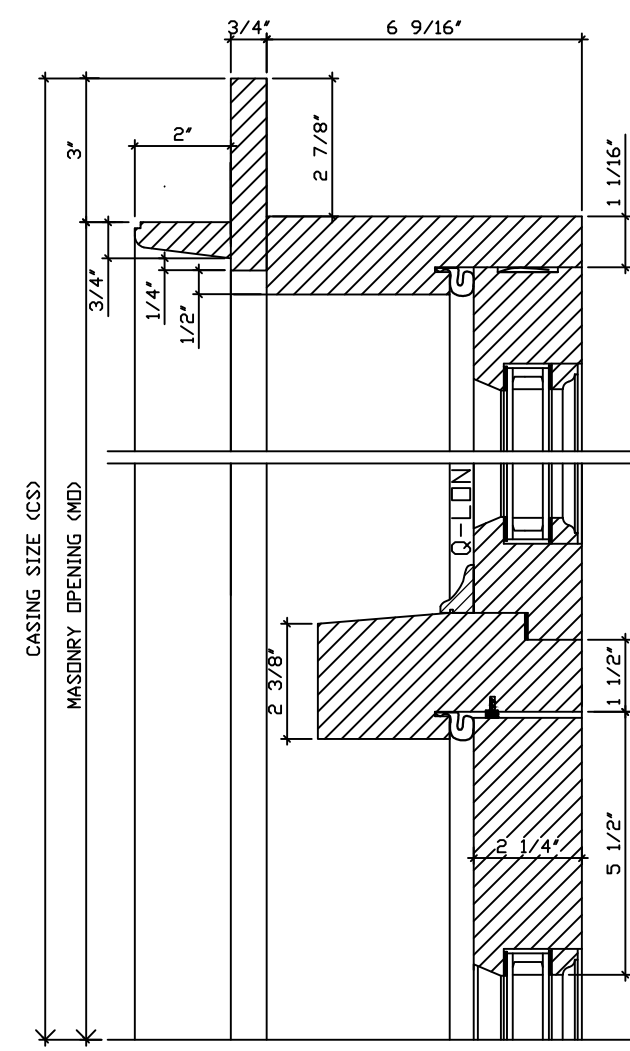
18 OUTSWING PLANK PANEL SINGLE DOOR (PLAN VIEW)
SCALE: 3" = 1'- 0"



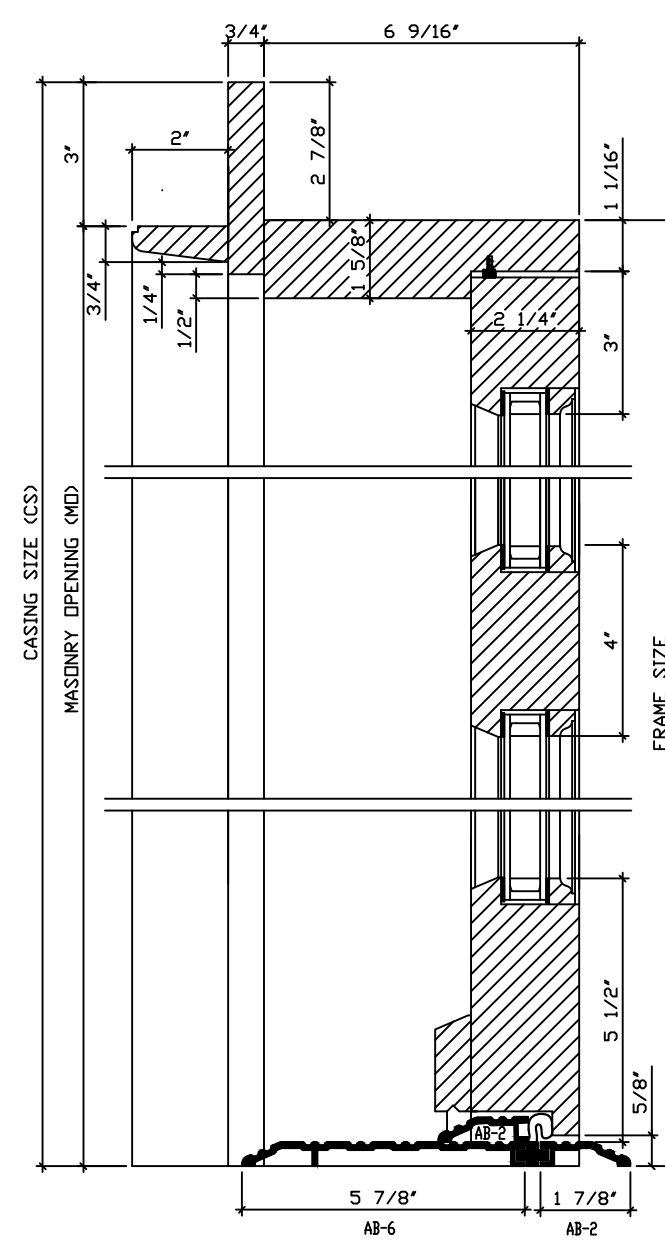
19 INSWING GLASS SINGLE DOOR (PLAN VIEW)
SCALE: 3" = 1'- 0"



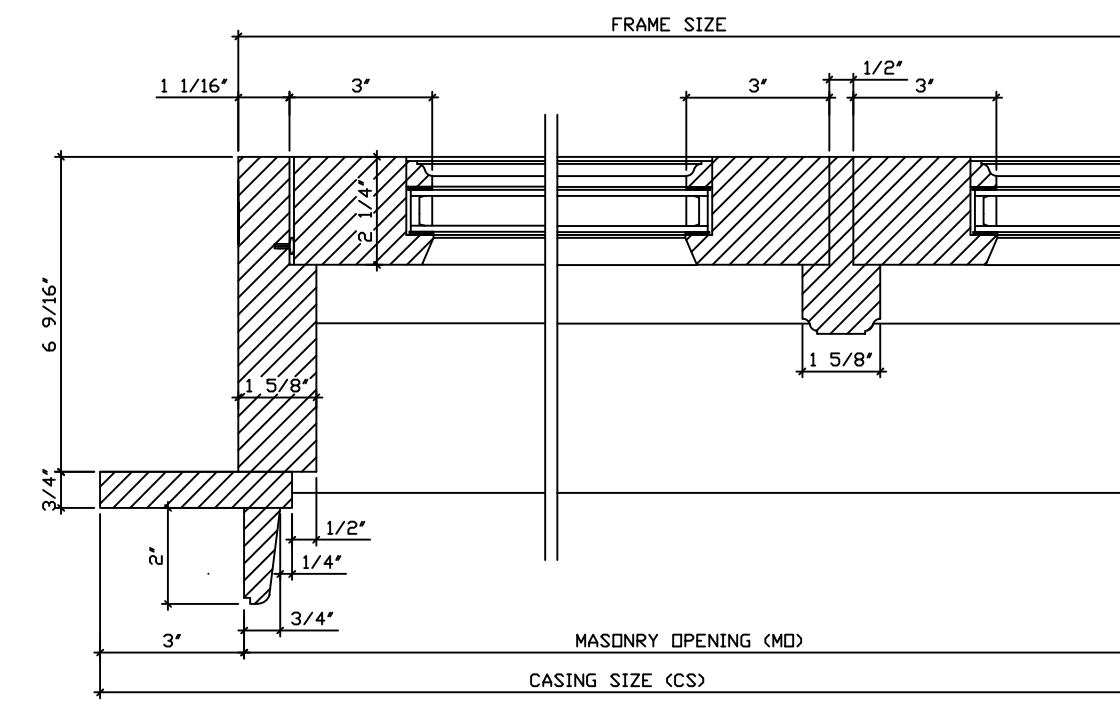
20 INSWING DOUBLE GLASS DOOR (PLAN VIEW)
SCALE: 3" = 1'- 0"



21 INSWING GLASS DOOR TRANSOM DETAIL (VERTICAL)
SCALE: 3" = 1'- 0"



22 FIXED GLASS DOOR (VERTICAL)
SCALE: 3" = 1'- 0"



23 FIXED GLASS DOUBLE DOOR (PLAN VIEW)
SCALE: 3" = 1'- 0"

MATERIAL: WINDOW: VERNON RD. DOOR: ARON WINDOW (AW) GLASS: 3/4" TOTAL IGL: LOWE (EPS) + ARGON IGL, STANDARD GLASS THICKNESS AT INT. AND EXT. LITE, BLACK SPACER, TEMPERED AS INDICATED.

SCREEN: BLACK HALF ALUMINUM FRAME SCREEN WITH CLEARVIEW MESH

JAMB: 6 9/16" AT WINDOWS AND DOORS

SASH: 1 3/4" THICK AT WINDOWS, 2 1/4" AT DOORS

WINDOW HARDWARE: - US10B #4217 ARC SASH LOCK (1)
- US10B #301 ARC SASH LIFTS (2)
- US10B #6 ARC GROMMETS

CASING: - 3/4" X 4" FACTORY INSTALLED EXTERIOR FLAT CASING
- CUSTOM BRICKMOLD TO MATCH EXISTING (SHIPPED LOOSE)

DOOR HARDWARE: - US10B SOLID BRASS BALL BEARING HINGES WITH FLAT TIPS
- MULTI-POINT LOCK MECHANISM ONLY (TRIM BY OTHERS)
MUNTINS: - CUSTOM 5/8" SOL MUNTINS WITH BLACK SPACER BARS

FINISH: - PRIMED INTERIOR, PAINTED EXTERIOR
(BLACK - GENIEK 525 TO MATCH SCREEN COLOR - PFB SAMPLE SUBMITTED)

PROJECT: **6-7 MOUNT VERNON**

PROJECT: PROPOSAL #11187

DELIVERY ADDRESS: BOSTON, MA, USA

DRAWN BY: Kevin Thibault

MANUFACTURER: **Belisle Architectural Doors and Windows**
56 East Gauvin St., St-Jean-De-Dieu, QC, Canada, G0L 3M0
(Tel.) 866-851-5113 (Toll Free) (Fax) 418-963-2200

REPRESENTATIVE: **FREDDY MAGUIRE**

BUILDER: **SEA-DAR CONSTRUCTION**

1st Submittal:

AUGUST 17TH, 2015

REVISED:

JANUARY 12TH, 2016

ATTACHMENT B - DOG AND PINTLE



PROJECT APPROVED PINTLE



INSTALLED 25 BEACON PINTLE



6MV SHUTTERS



APPROVED SHUTTER DOG



ATTACHMENT A - SHUTTERS

SUBMITTAL
062000-02
Revision # 0

SEA - DAR CONSTRUCTION

Building trust one project at a time

TITLE: 6/7 MVP - Shutters

SENT DATE: 10/15/2015

PROJECT: 25 Beacon/6-7 Mt Vernon

JOB: 14-110

PACKAGE: Finish Carpentry

DUE DATE:

SENT TO:

CBT Architects
Chris Pitman

<input checked="" type="checkbox"/> Reviewed	<input type="checkbox"/> Make Corrections As Noted
<input type="checkbox"/> Rejected	<input type="checkbox"/> Revise & Resubmit
<input type="checkbox"/> _____	
<p>Corrections and/or comments made on this submittal during this review do not relieve subcontractor from compliance with the requirements of the drawings and specifications. This check is only for review of general compliance with the information given in the contract documents. The subcontractor is responsible for: confirming and correlating all quantities and dimensions; selecting fabrication processes and techniques of construction; coordinating his work with that of all other trades; and performing his work in a safe and satisfactory manner.</p>	
By: <u>J Burton</u> Date: <u>10/15/15</u>	

APPROVED FURNISH AS CORRECTED
 REJECTED REVISE AND RESUBMIT
 SUBMIT SPECIFIED ITEM

This review is only for general conformance with the design concept of the project and general compliance with the information given in the Contract Documents. Corrections or comments made during this review do not relieve the contractor from compliance with the requirements of the plans and specifications. Approval of a specific item shall not include approval of the assembly of which the item is a component. Contractor is responsible for: dimensions to be confirmed and correlated at the jobsite; information that pertains solely to the fabrication process or to the means, methods, techniques, sequences and procedures of construction; coordination of the work of all trades; and for performing all work in a safe and satisfactory manner.

DATE 10/20/2015 BY CHRIS PITMAN

cbt 617 262 4354 cbtarchitects.com JOB # 147021
110 canal street boston, ma 02114

Architect's Stamp

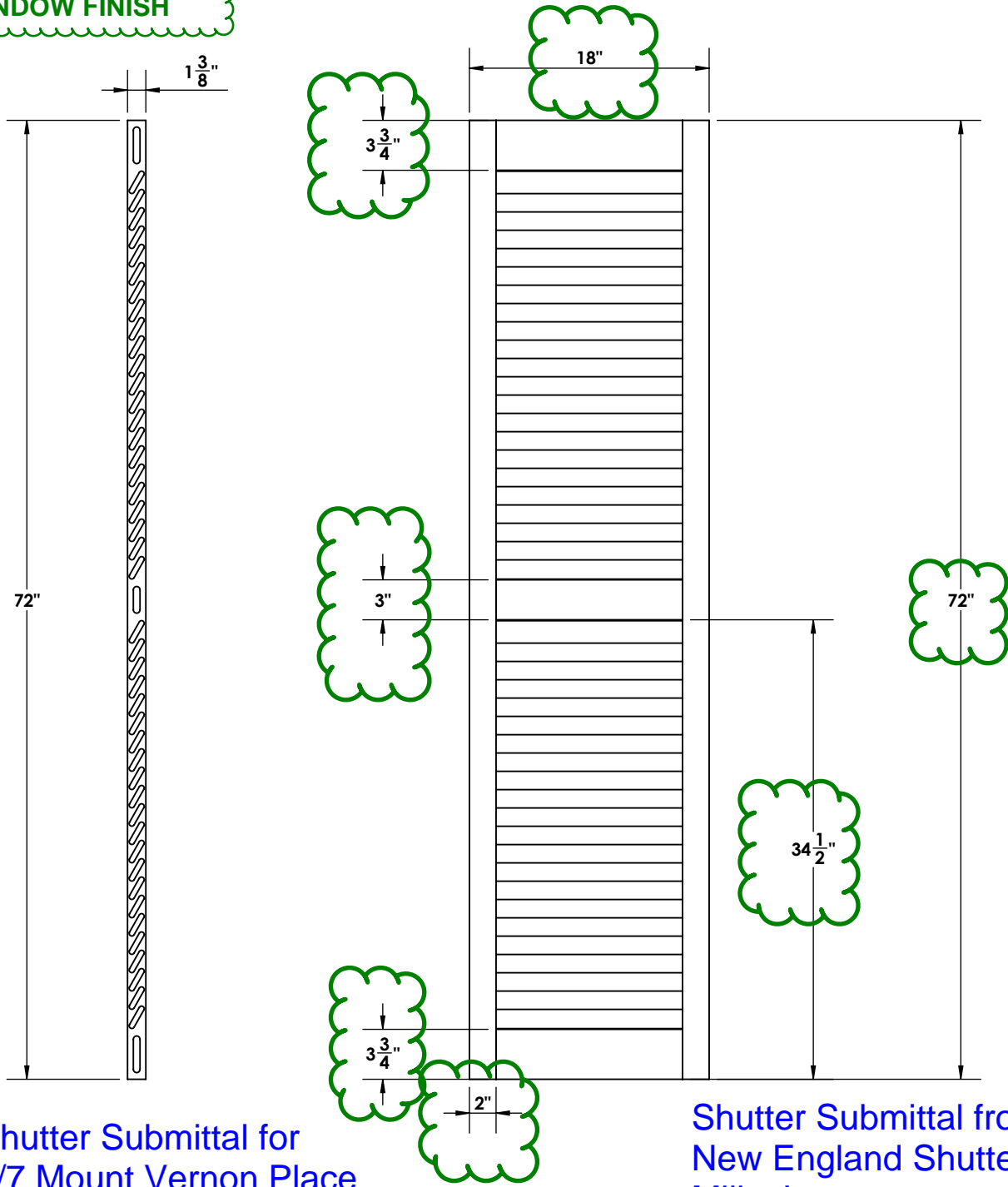
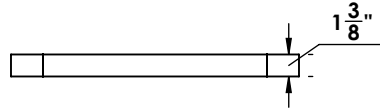
FOR REQUESTED SAMPLES

Engineer's Stamp

ALL DIMS TO MATCH
EXISTING FOR SHUTTERS ON
ALL FLOORS

SHUTTER FINISH
TO MATCH
WINDOW FINISH

Shutters to match existing
shutter sizes.



Shutter Submittal for
6/7 Mount Vernon Place

Shutter Submittal from
New England Shutter
Mills, Inc.

Approval Signature		Quote/Order Number:	
Purchase Order No#:		HEAVY DUTY - FLUSH - 1.875 SLATS	
Date:		SIZE A DWG. NO.	REV.
		SCALE: 1:12	SHEET 1 OF 1