



ENTIRE FACADE AND FRONT DOOR



9 West Cedar Street

HICKOX WILLIAMS ARCHITECTS



9 West Cedar Street

HICKOX WILLIAMS ARCHITECTS

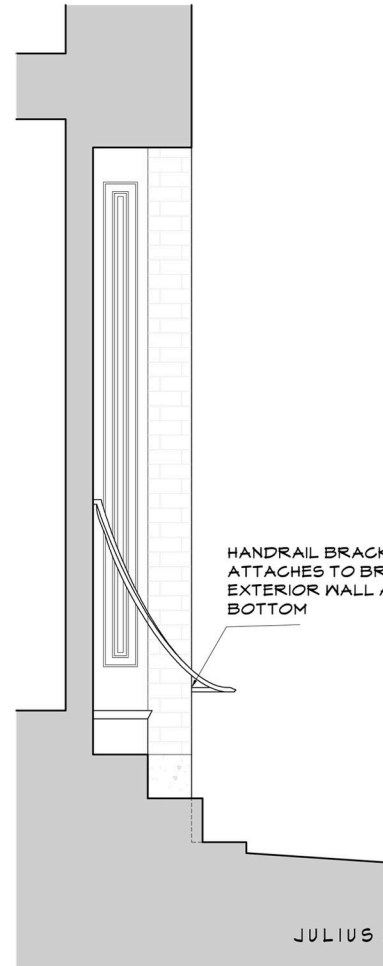
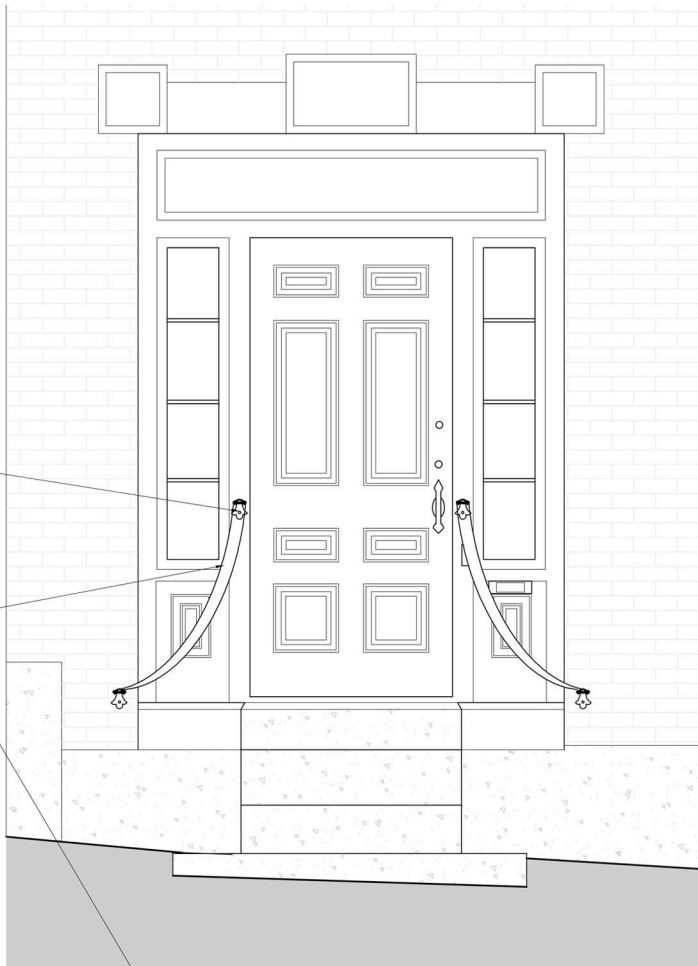


9 West Cedar Street

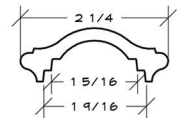
HICKOX WILLIAMS ARCHITECTS

HANDRAIL BRACKET
ATTACHES TO DOOR
FRAME AT TOP

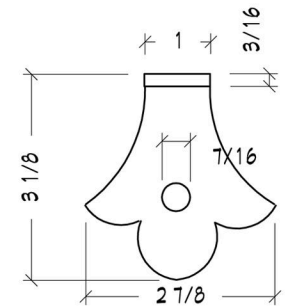
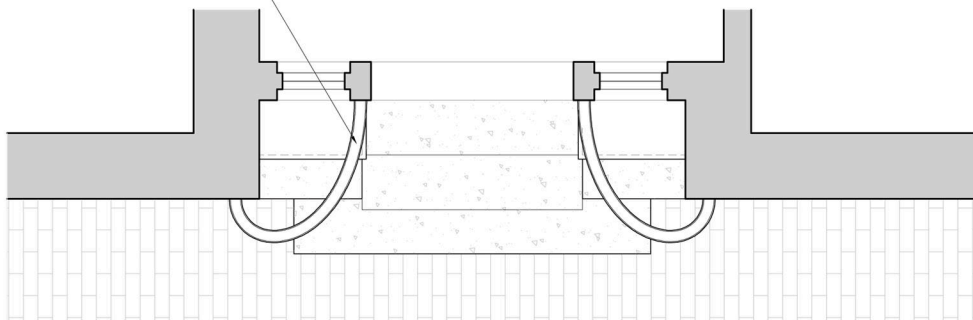
NEW WROUGHT IRON
HANDRAILS BOTH SIDES
OF DOOR



HANDRAIL BRACKET
ATTACHES TO BRICK
EXTERIOR WALL AT
BOTTOM



JULIUS BLUM & CO., PART No. 4441-5



JULIUS BLUM & CO., PART No. 401

9 West Cedar Street

HICKOX WILLIAMS ARCHITECTS



Side view of new railings

9 West Cedar Street
HICKOX WILLIAMS ARCHITECTS



Front view of new railings

9 West Cedar Street
HICKOX WILLIAMS ARCHITECTS



Close-up of new railings

9 West Cedar Street
HICKOX WILLIAMS ARCHITECTS

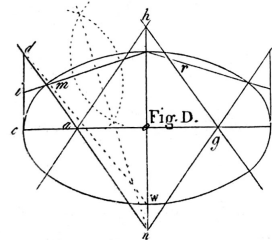
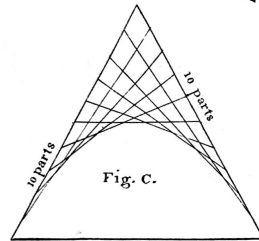
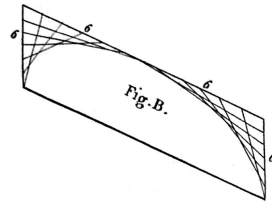
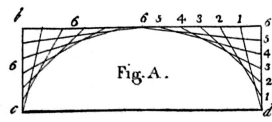


Staircase in Ellsworth, Maine
based *The American Builder's
Companion* by Asher Benjamin

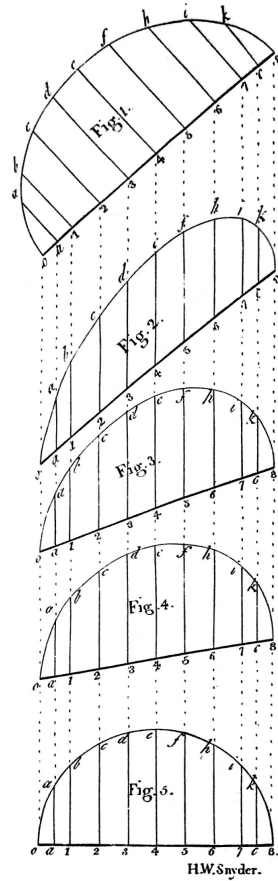
9 West Cedar Street
HICKOX WILLIAMS ARCHITECTS

Plate from *The American Builder's Companion* illustrating layout of complex curves

5



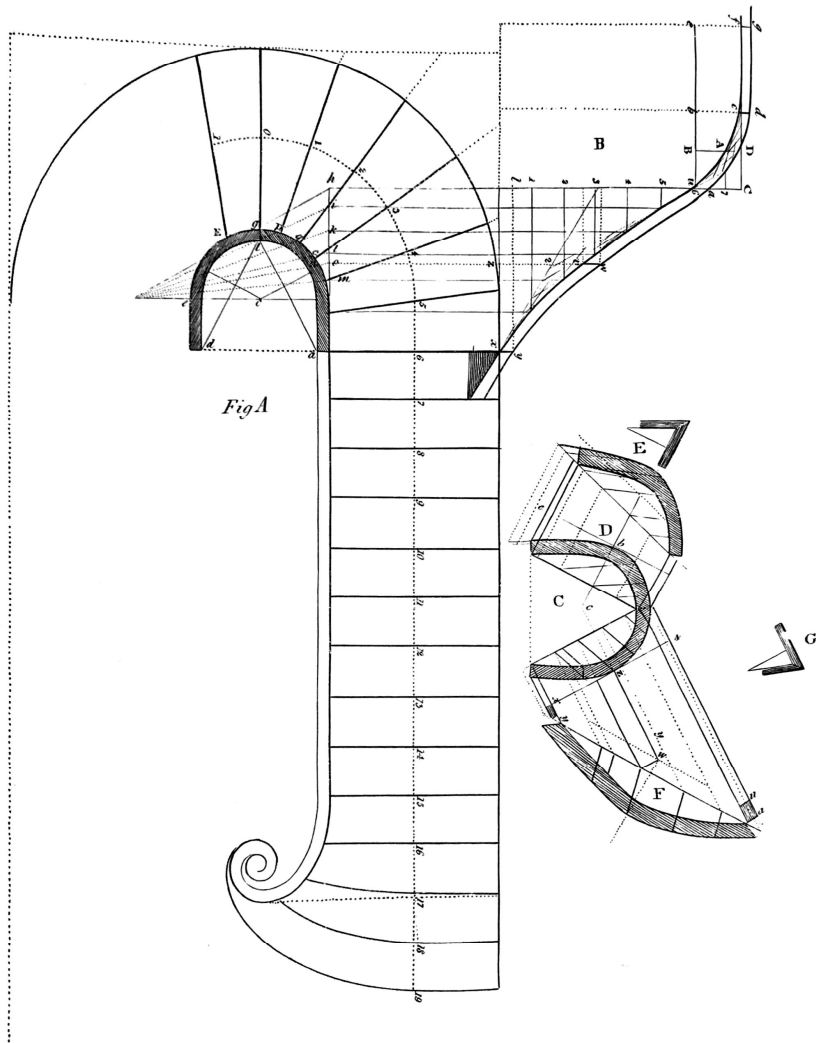
A. Benjamin.



HW. Snyder.

9 West Cedar Street
HICKOX WILLIAMS ARCHITECTS

Staircase layout diagram from
*The American Builder's
Companion*



9 West Cedar Street
HICKOX WILLIAMS ARCHITECTS

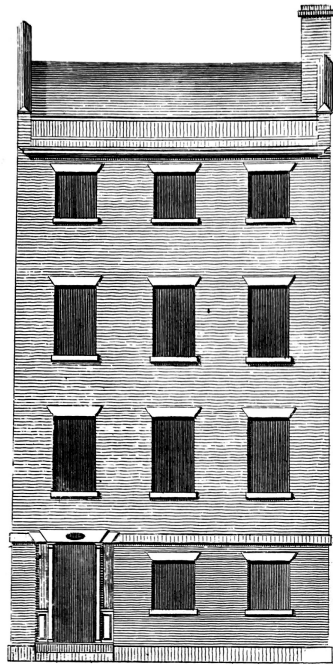
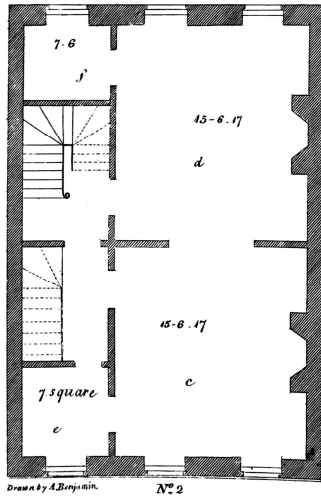
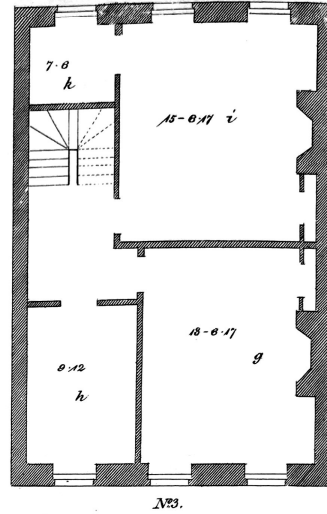
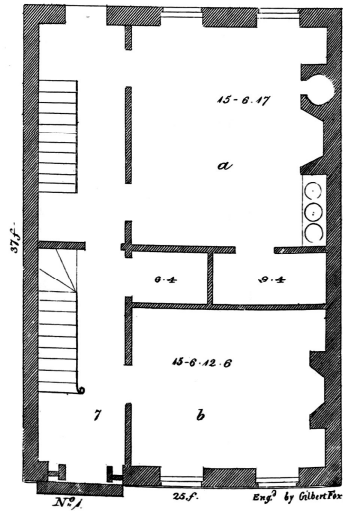


Plate 52.

“Plan and Elevation for a Town House” from *The American Builder’s Companion*



Drawn by A. Benjamin. Nº 2



Nº 1. 25-0. Engd by Gilbert M. M.

9 West Cedar Street
HICKOX WILLIAMS ARCHITECTS







