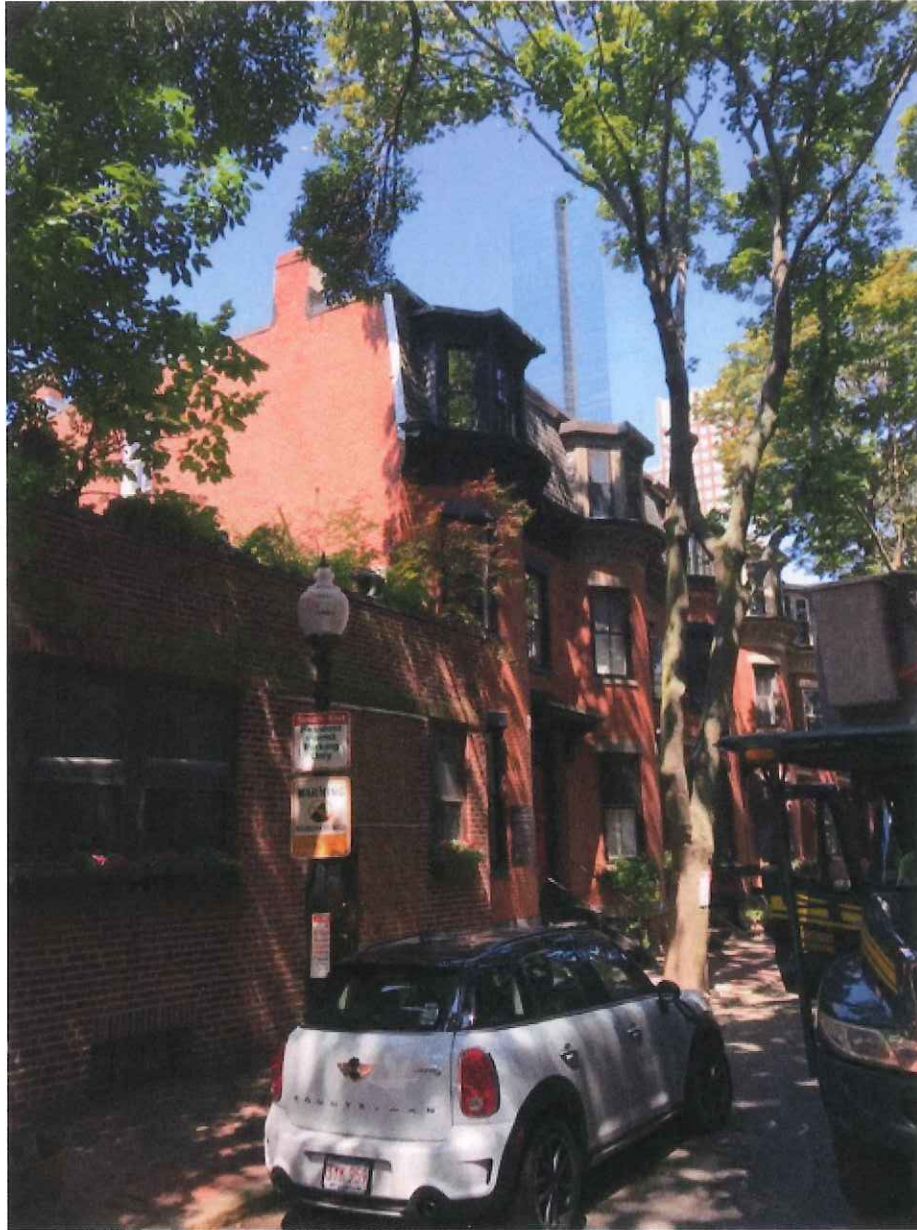




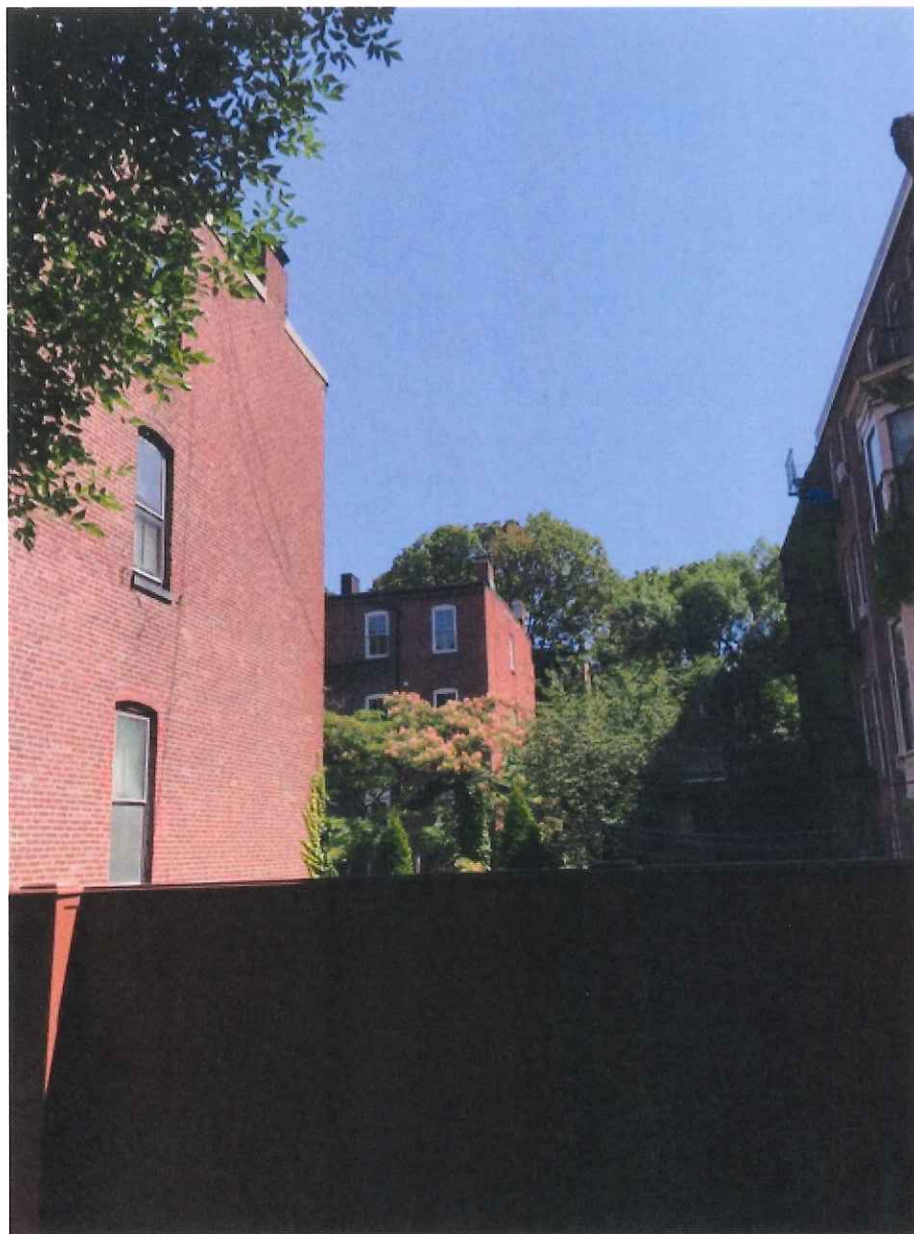
Existing front facade
of 2 St. Charles street



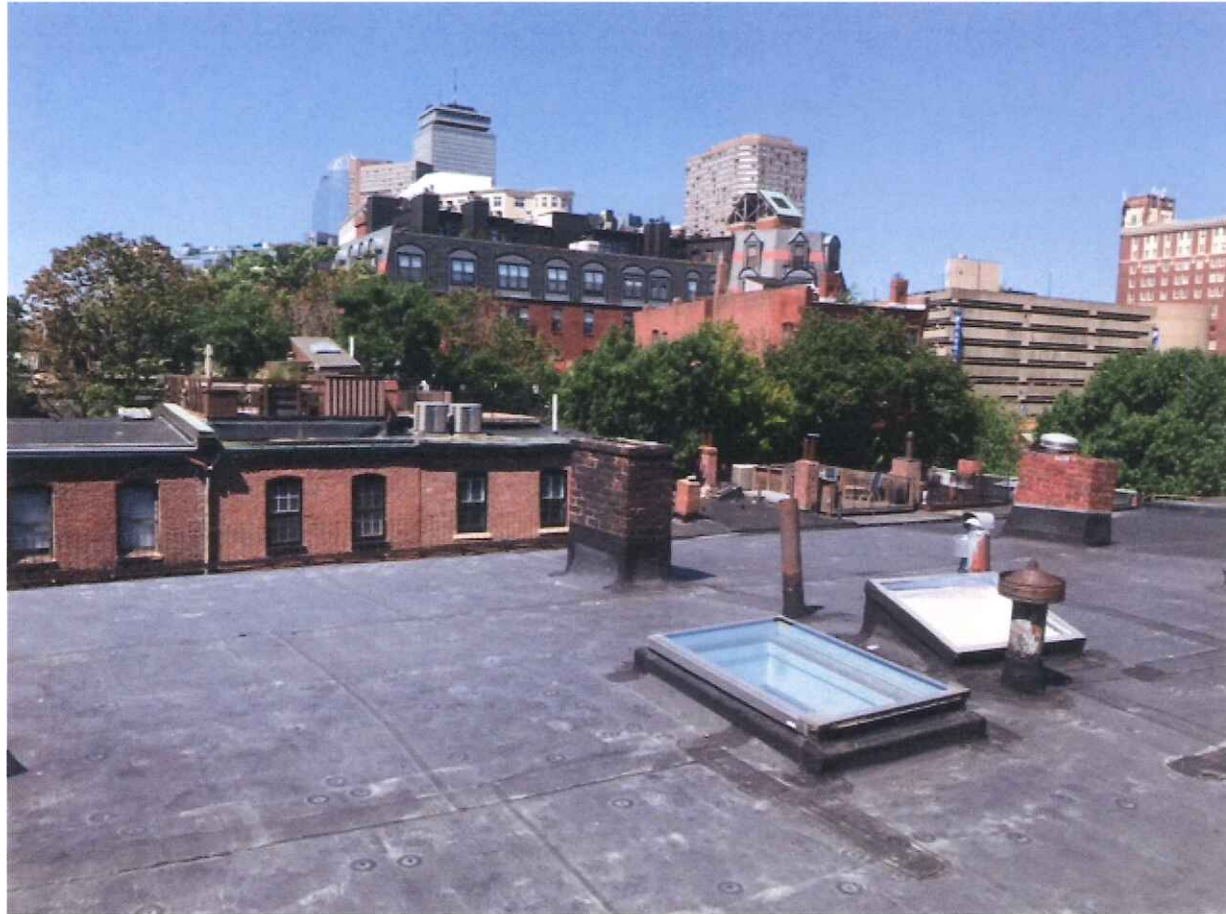
Existing side facade
of 2 St. Charles St. looking
south towards Chandler St.



Existing Side Facade
of 2 St. Charles St, looking
North to Dead End of
St. Charles St.



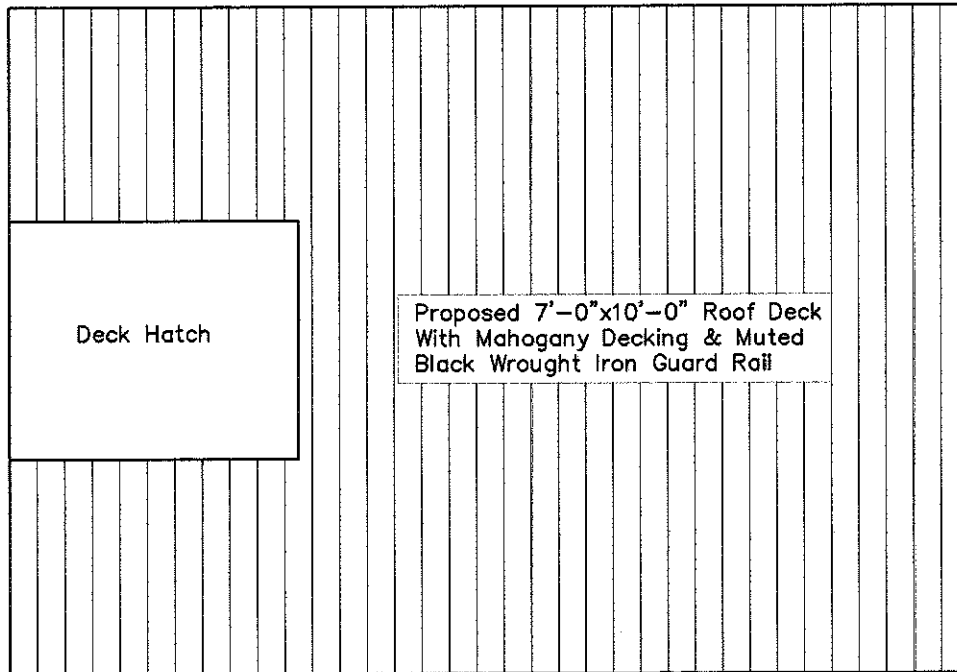
Rear Facade of 2 St. Charles St.
from Cazenove St.



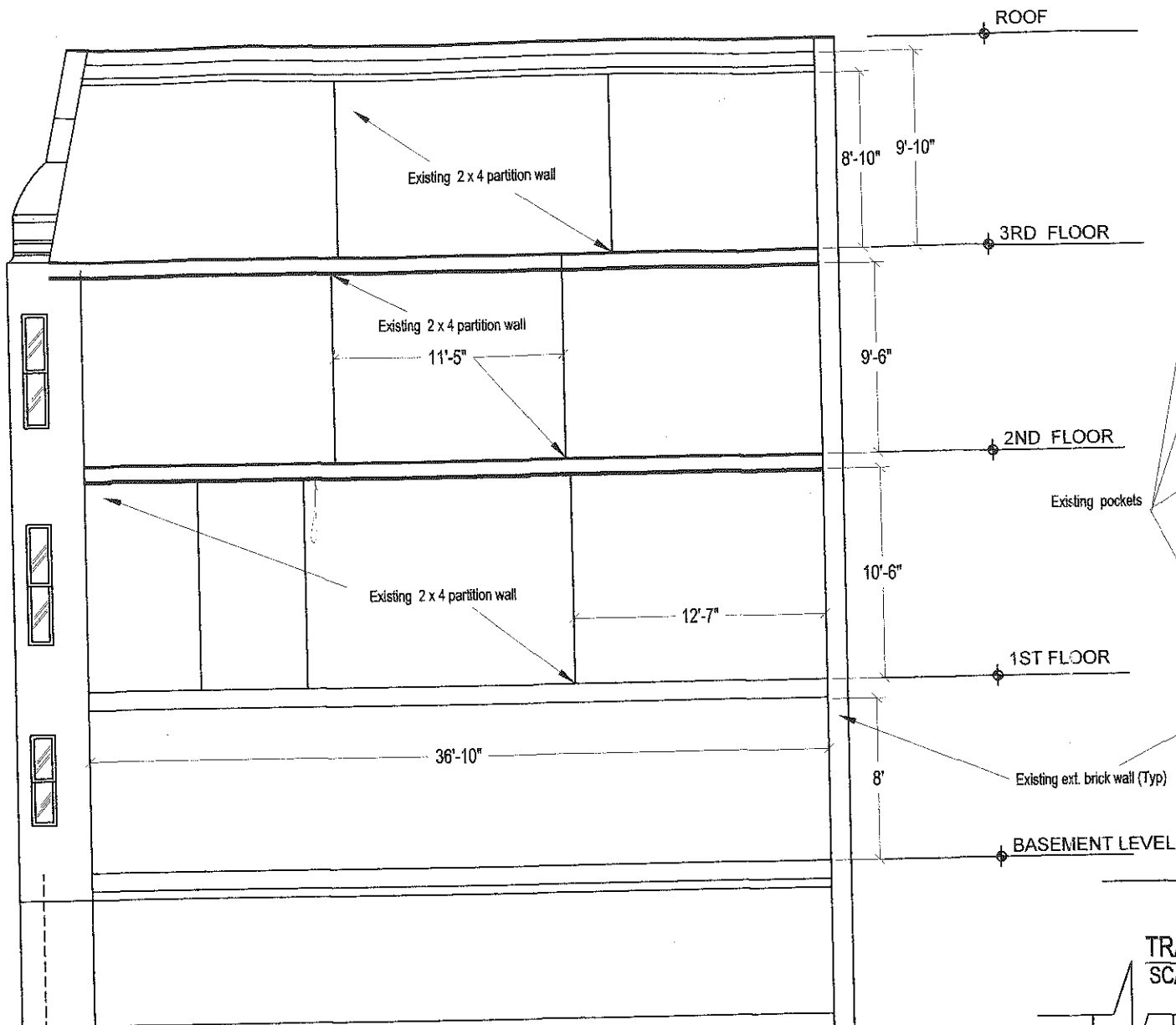
Existing Roof of 2 St. Charles St.



Proposed Roof Deck Corners
of 2 St. Charles St 10' x 7'

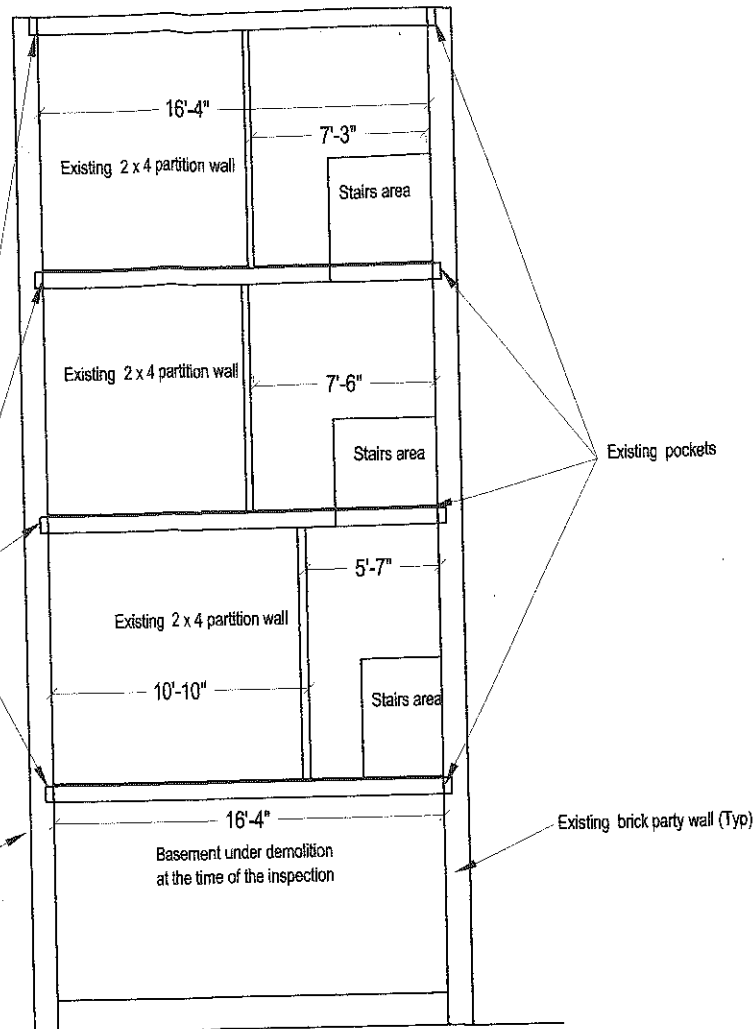


PROPOSED ROOF DECK
2 ST. CHARLES STREET
BOSTON, MASSACHUSETTS
SCALE: 1/2"=1' AUGUST 14, 2017

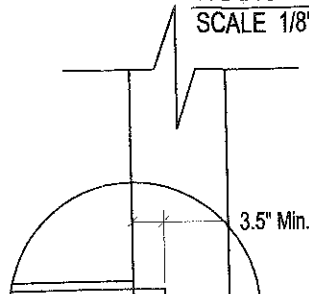


RIGHT SIDE ELEVATION PLAN - EXISTING CONDITION
SCALE 1/8" = 1'-0"

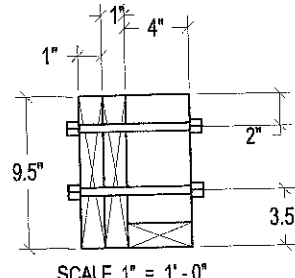
Cross section of 2 St. Charles St.



TRANSVERSAL SECTION - EXISTING CONDITION
SCALE 1/8" = 1'-0"



Provide a min. bearing support of 3.5'-4" deep after beam inside, brick solid or non shrinkable grout.



See trimmer beam

(2) 1.5 x 9.5 Select structural Southern Pine - Dry Use bolted to existing trimmer to have a section of 7 x 9.5

Existing 4 x 8 stair trimmer
Existing joists 2 x 8 Increase section to have M. Inertia >= 175.55 in 4 and Sect. Mod. = 33.92 in 3
Existing 4 x 8 stair trimmer
Existing ext. brick wall (Typ)

SECTION - JOIST
SCALE 1" = 1'-0"