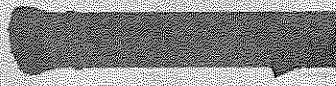


NEW ENGLAND CONFECTIONERY CO



BUILDING ADDRESS NUMBERS - LOCATIONS



CONTEXT LOCATION 1



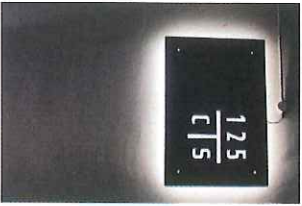
CONTEXT LOCATION 2

ST.A - EXTERIOR SIGN SYSTEM
7.26.17



burke + design
133 washington st
maldenhead ma
01945
781.631.0070

PEDESTRIAN BUILDING IDENTITY



CONTEXT



PLAN

est. 1'-3"

NOTES
 sign panel wraps around / offset from brick pier.
 LED light bar(s) mounted across center of panel(s) with
 upward and downward facing light. light emits through
 letters/numbers/top/bottom of sign. attachment
 through mortar, final detail TBD



est. 7'-0"

NOTES
 all visible sign surfaces painted color to match
 existing details on building (oil rubbed bronze-tbd).
 numbers and letters to be cut from panel(s) to allow
 brick to be visible during day and light to emit
 at night when illuminated

ST.B - EXTERIOR SIGN SYSTEM

7.26.17



SEAPORT INNOVATION DISTRICT
Boston, Mass.

EXTERIOR SIGN PROGRAM

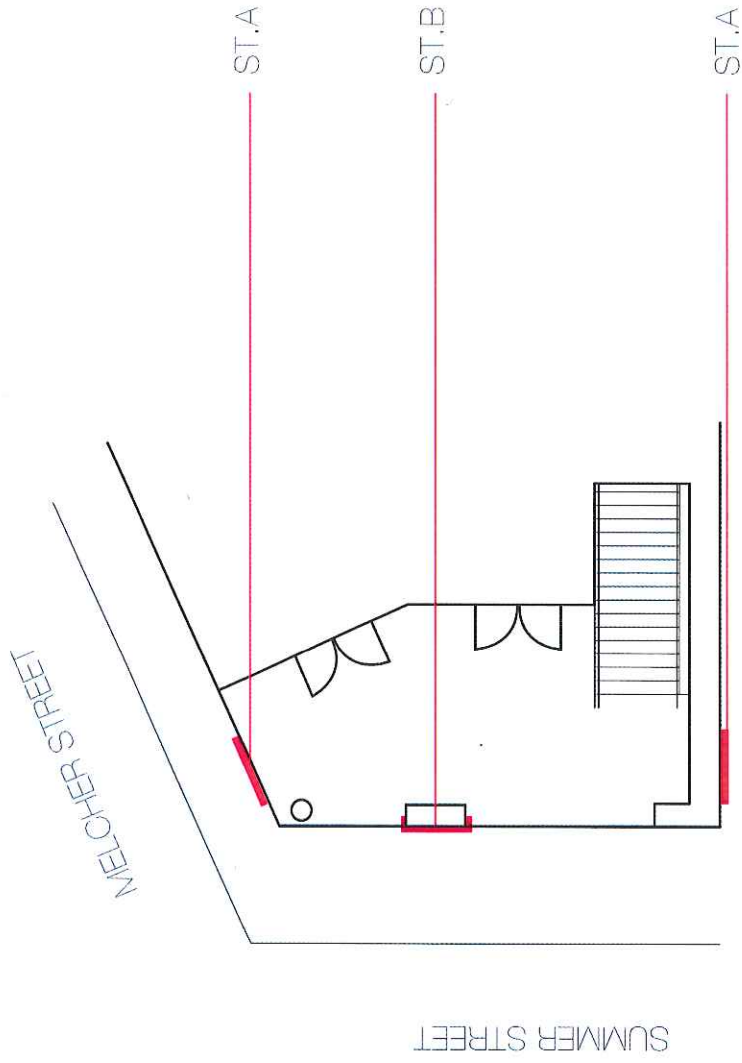


burke + design
7.26.17

SUMMARY

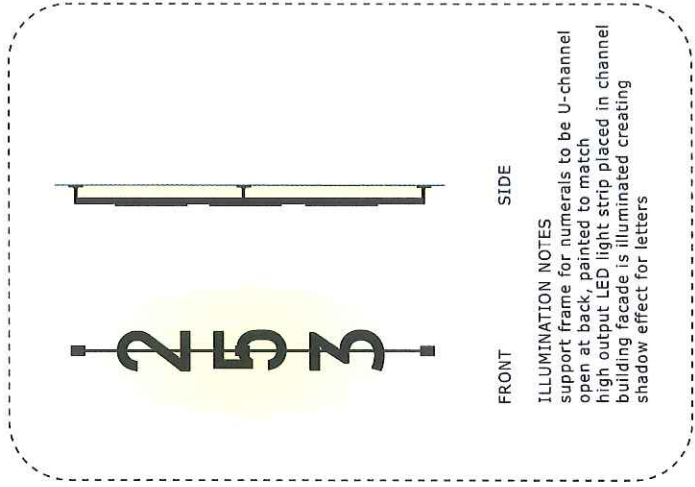
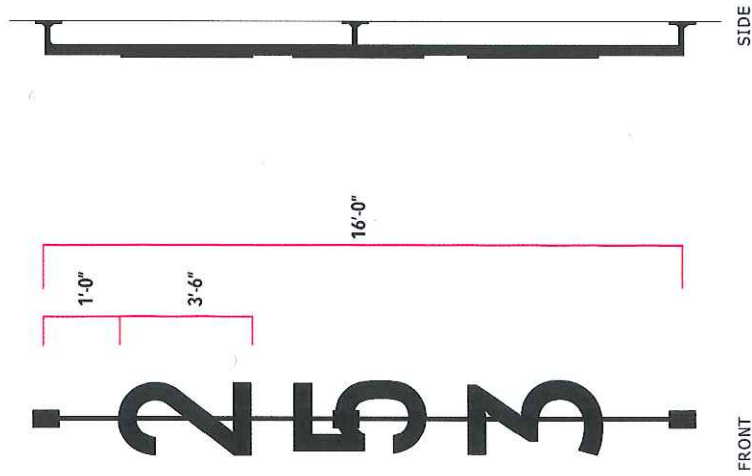
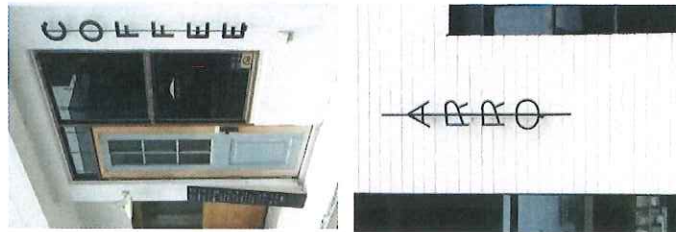
QTY.2 / ST.A - BUILDING ADDRESS NUMBERS
QTY.1 / ST.B - PEDESTRIAN BUILDING IDENTITY

LOCATIONS



burke + design
133 washington st
marblehead ma
01945
781.631.0070

BUILDING ADDRESS NUMBERS



FRONT

ILLUMINATION NOTES
 support frame for numerals to be U-channel open at back, painted to match high output LED light strip placed in channel building facade is illuminated creating shadow effect for letters

SIDE

FRONT

SIDE

NOTES

QUANTITY OF 2 SIGNS
 solid .25" painted aluminum numbers, numbers to attach to fabricated aluminum tube support structure, mounting plates attach structure to building, plates secure to building with mechanical fasteners positioned in brick mortar, final bracket details TBD, color of all elements to match color of existing details on building (oil rubbed bronze-tbd).



burke + design
 133 washington st
 marblehead ma
 01945
 781.631.0070

ST.A - EXTERIOR SIGN SYSTEM

7.26.17