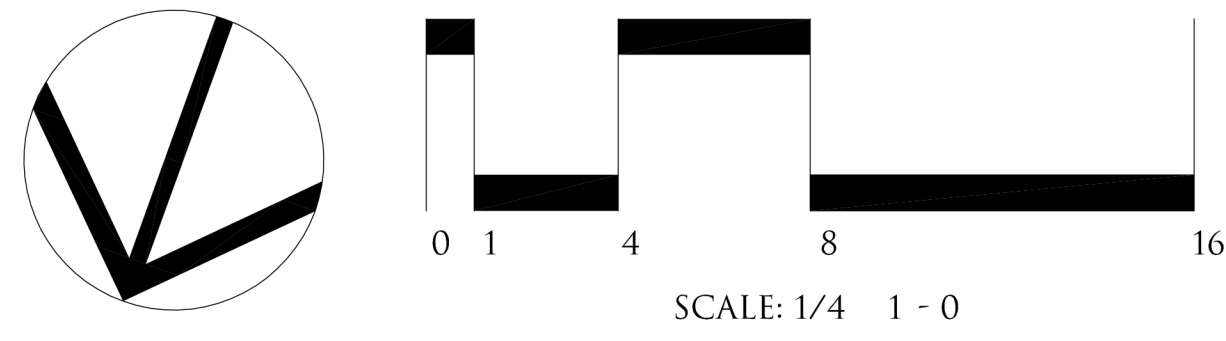
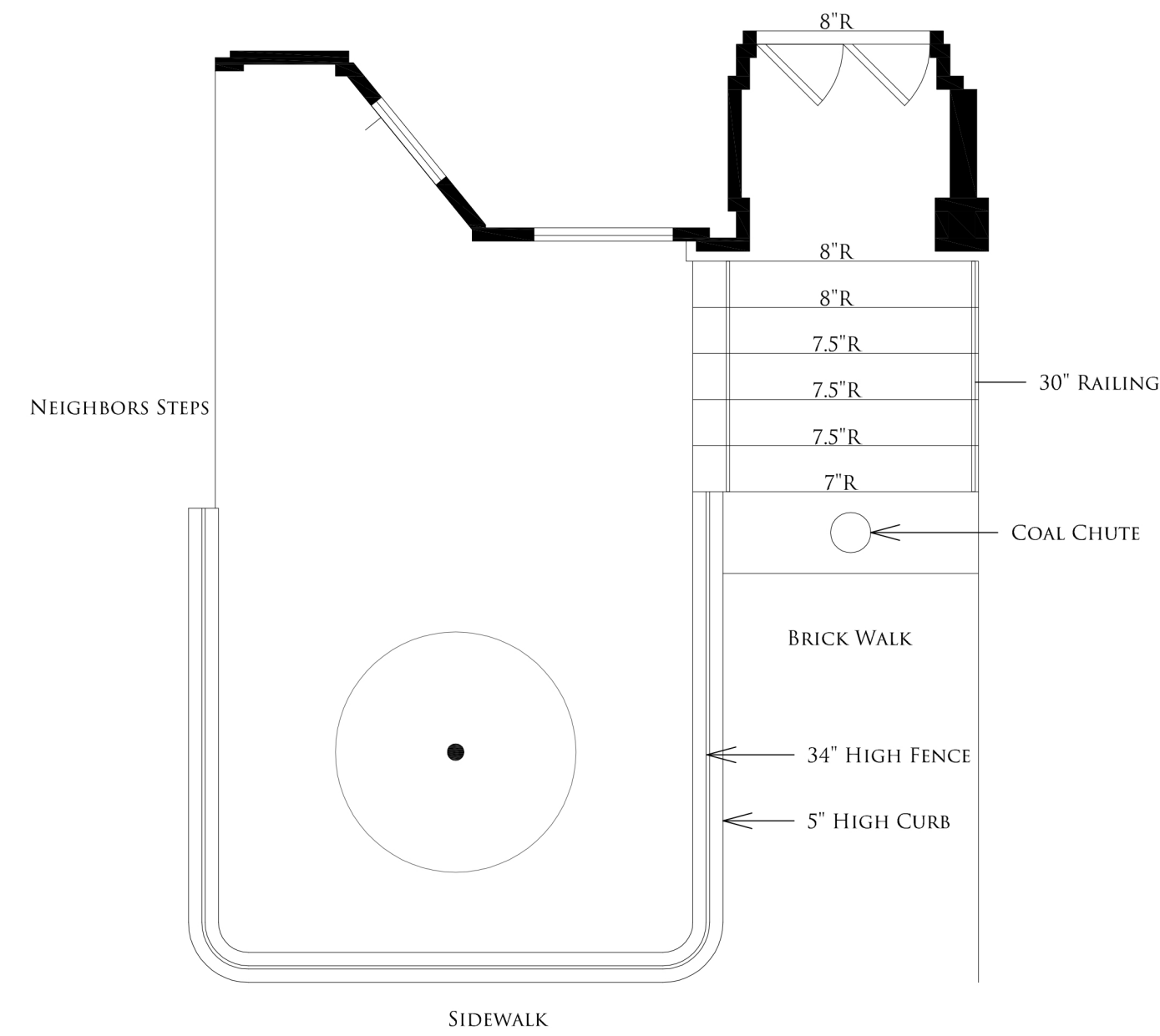
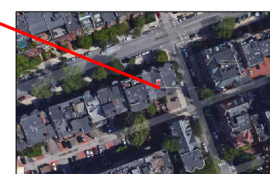
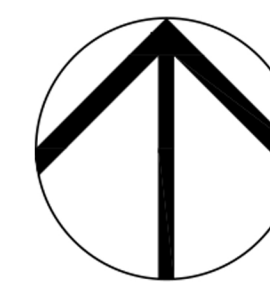
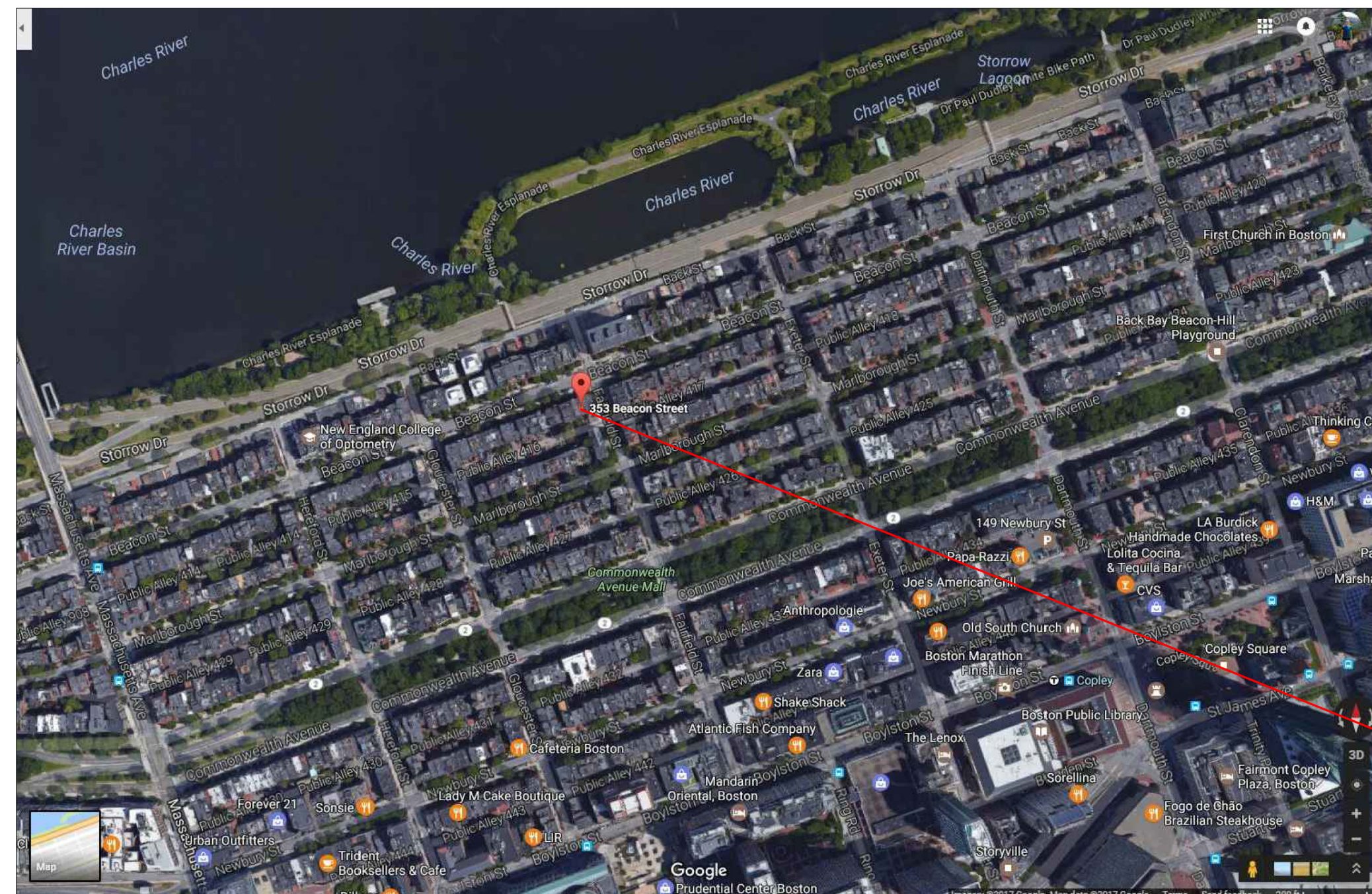
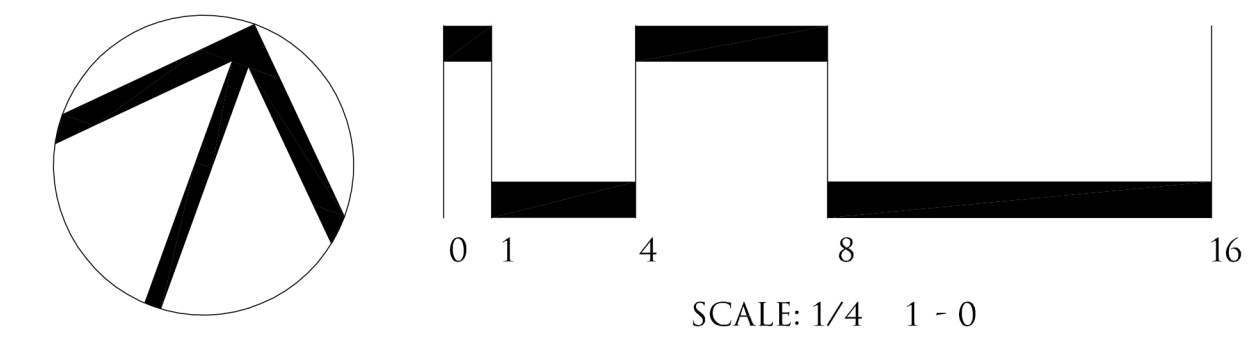
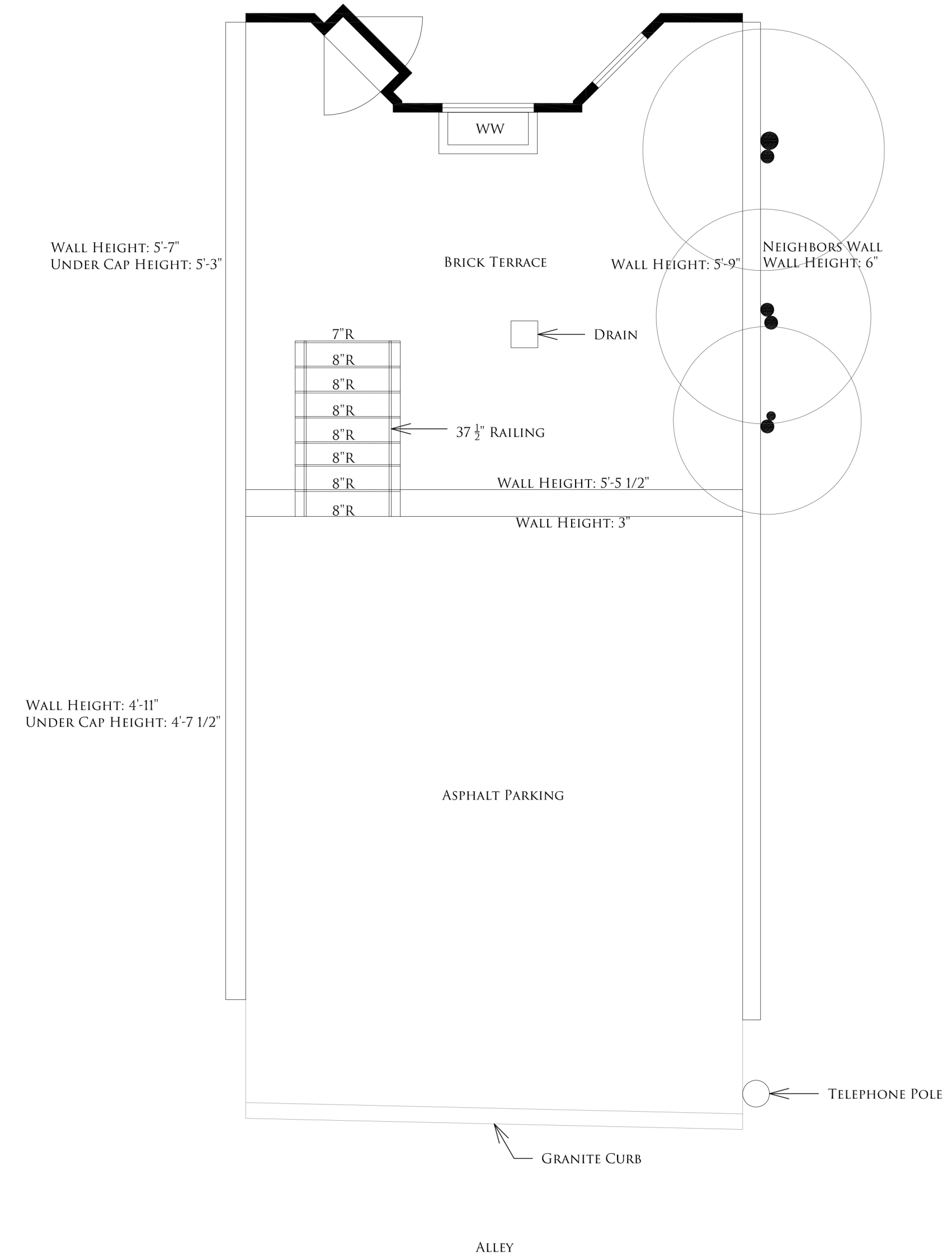


FRONT



REAR



**SUDBURY DESIGN GROUP**

740 Boston Post Rd. Sudbury, MA 01776  
 978.443.3638 MA | sudburymdesign.com | 401.789.5889 RI

EXISTING CONDITIONS  
DURBIN RESIDENCE

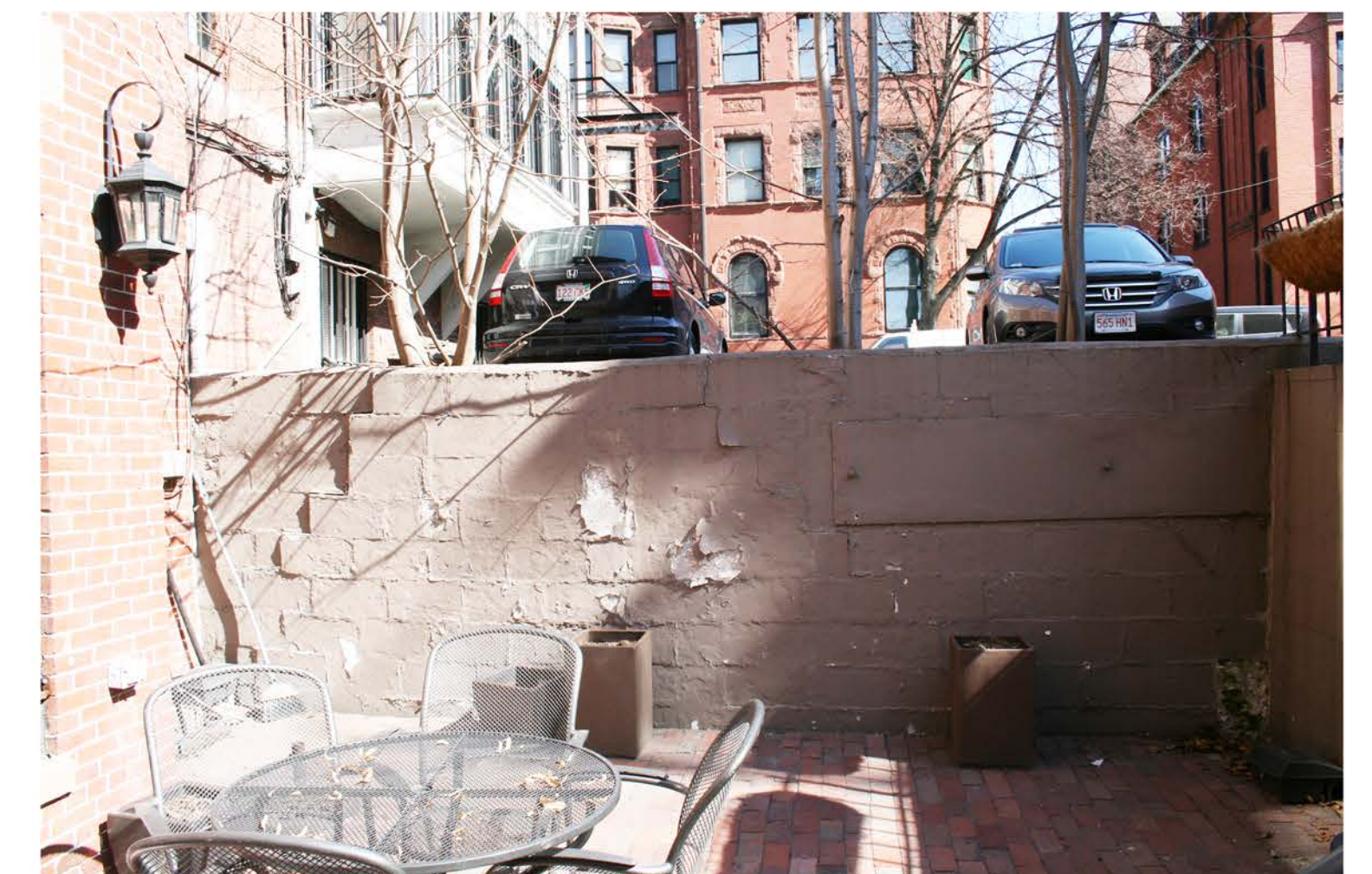
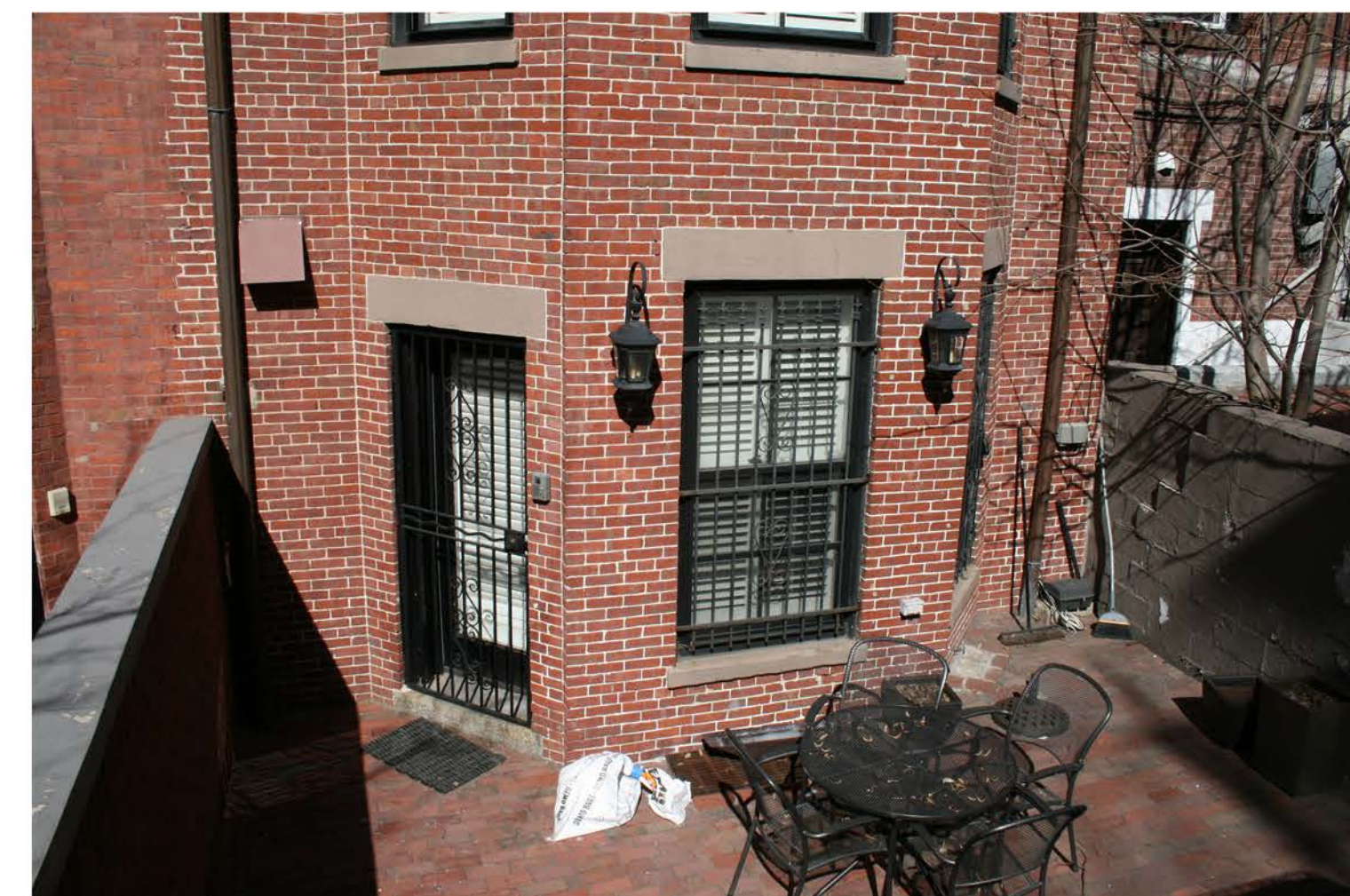
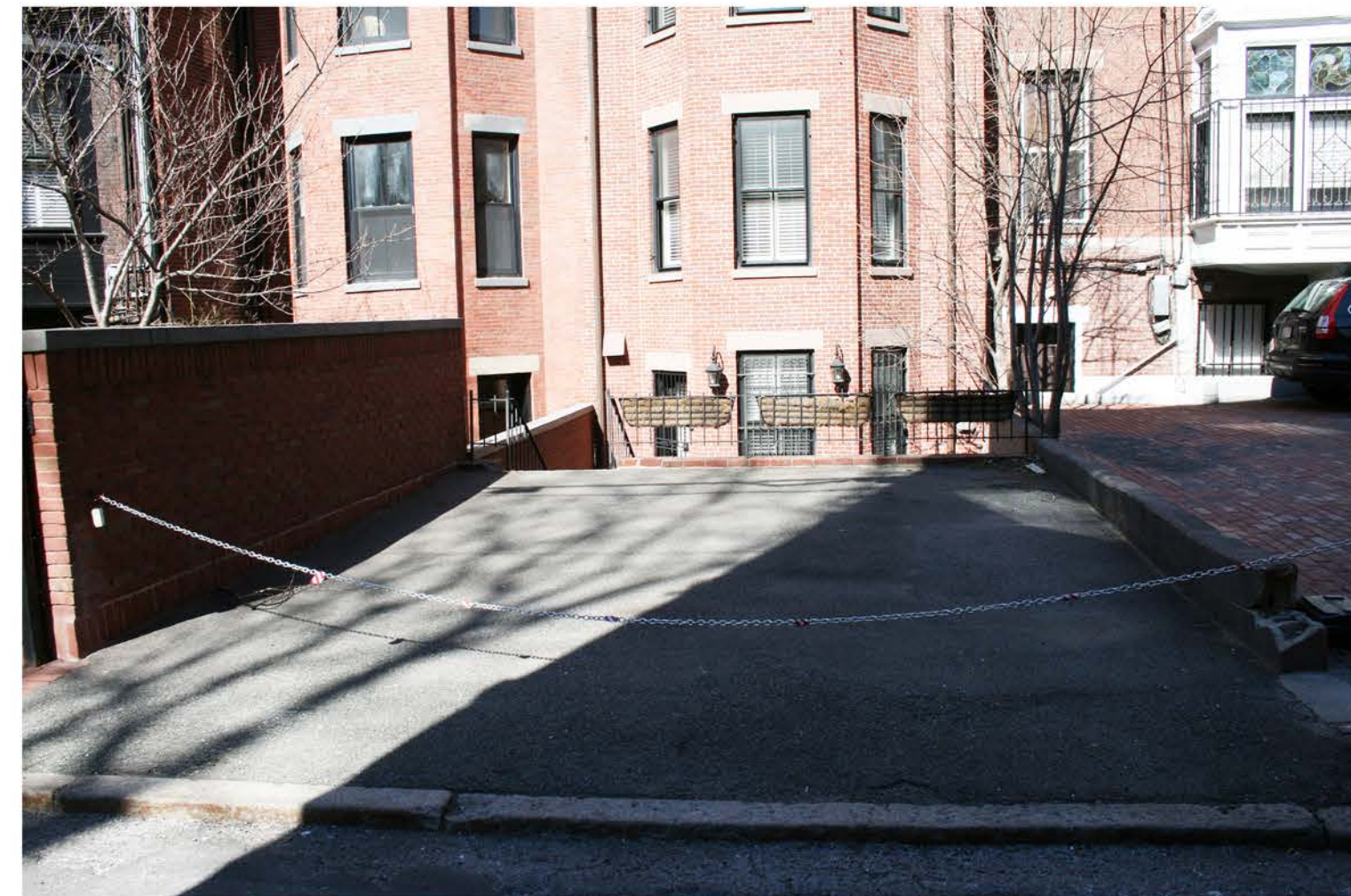
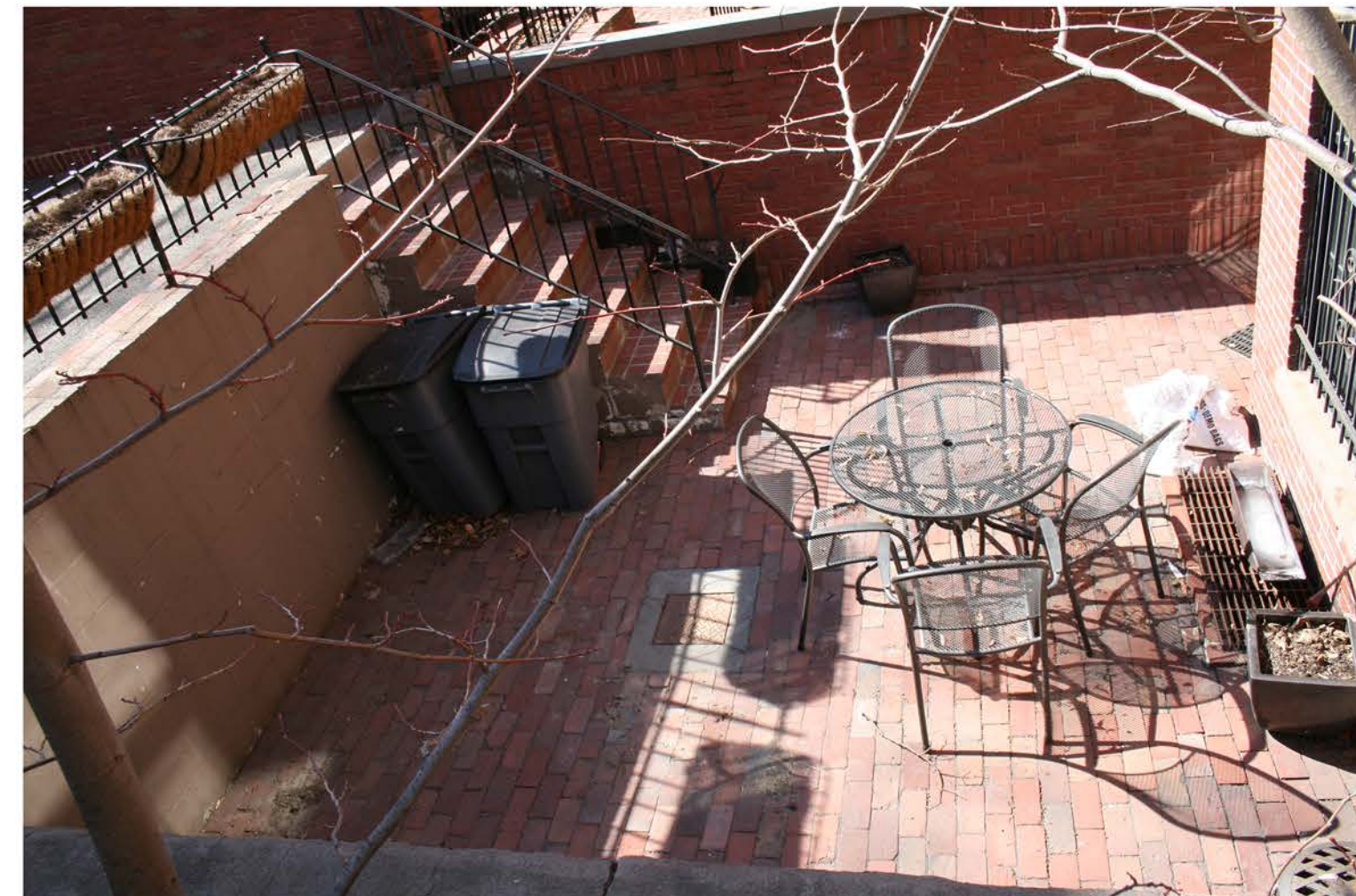
353 BEACON STREET  
 BOSTON, MASS.  
 SCALE: 1/4" = 1' - 0"  
 MARCH 7, 2017 KW



FRONT:



REAR:





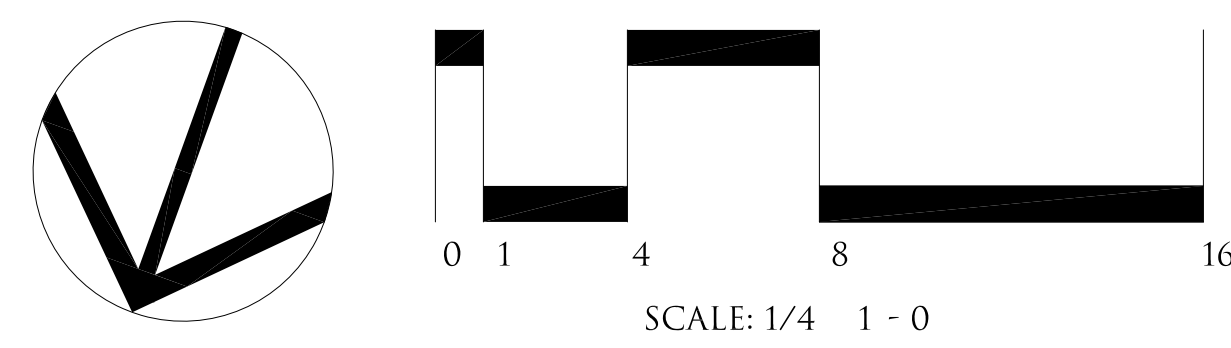
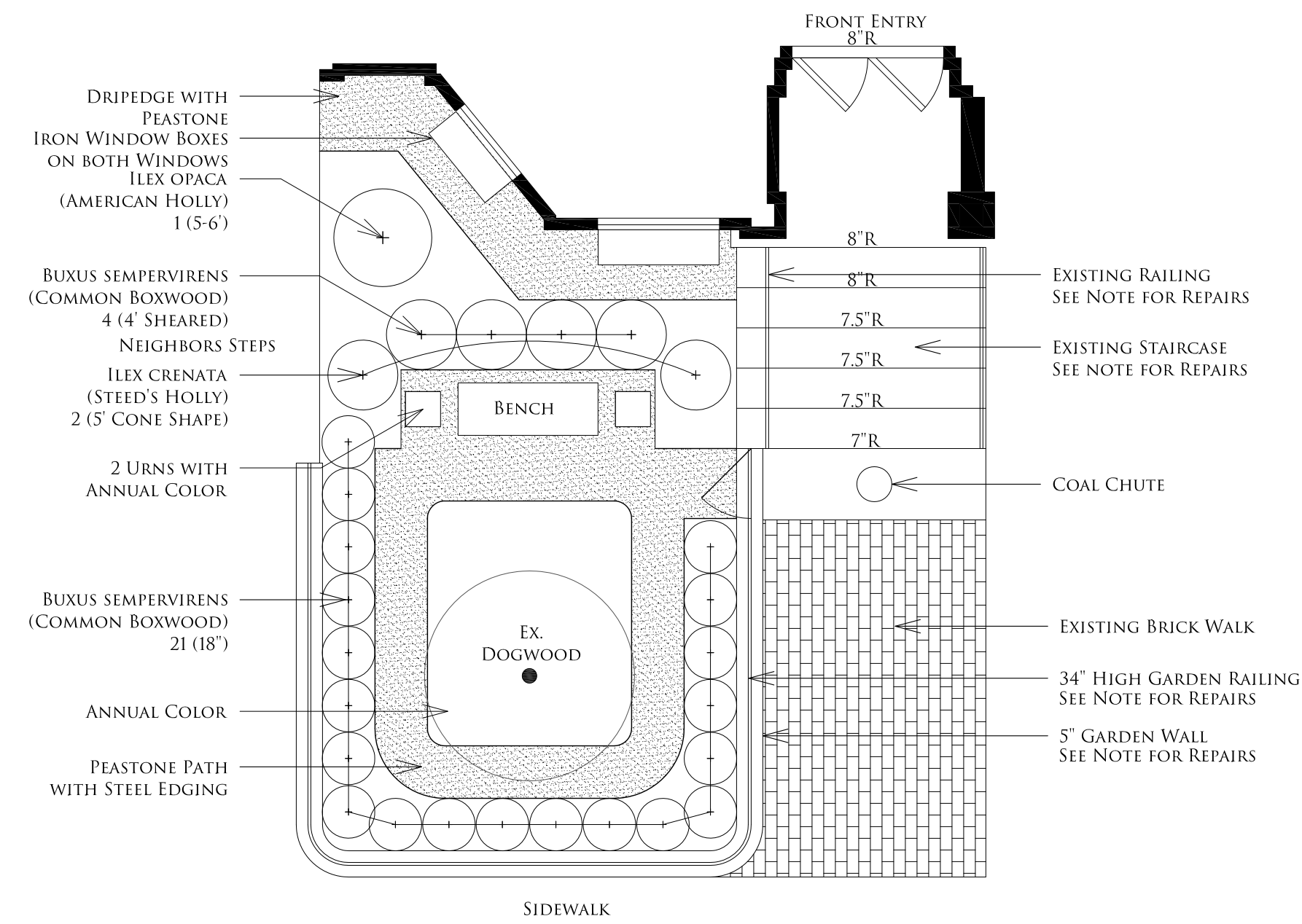
## FRONT

**NOTES:**

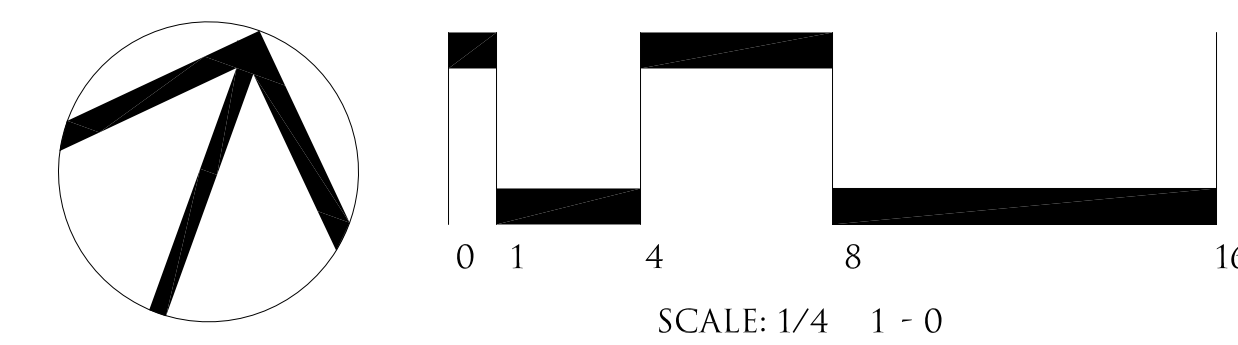
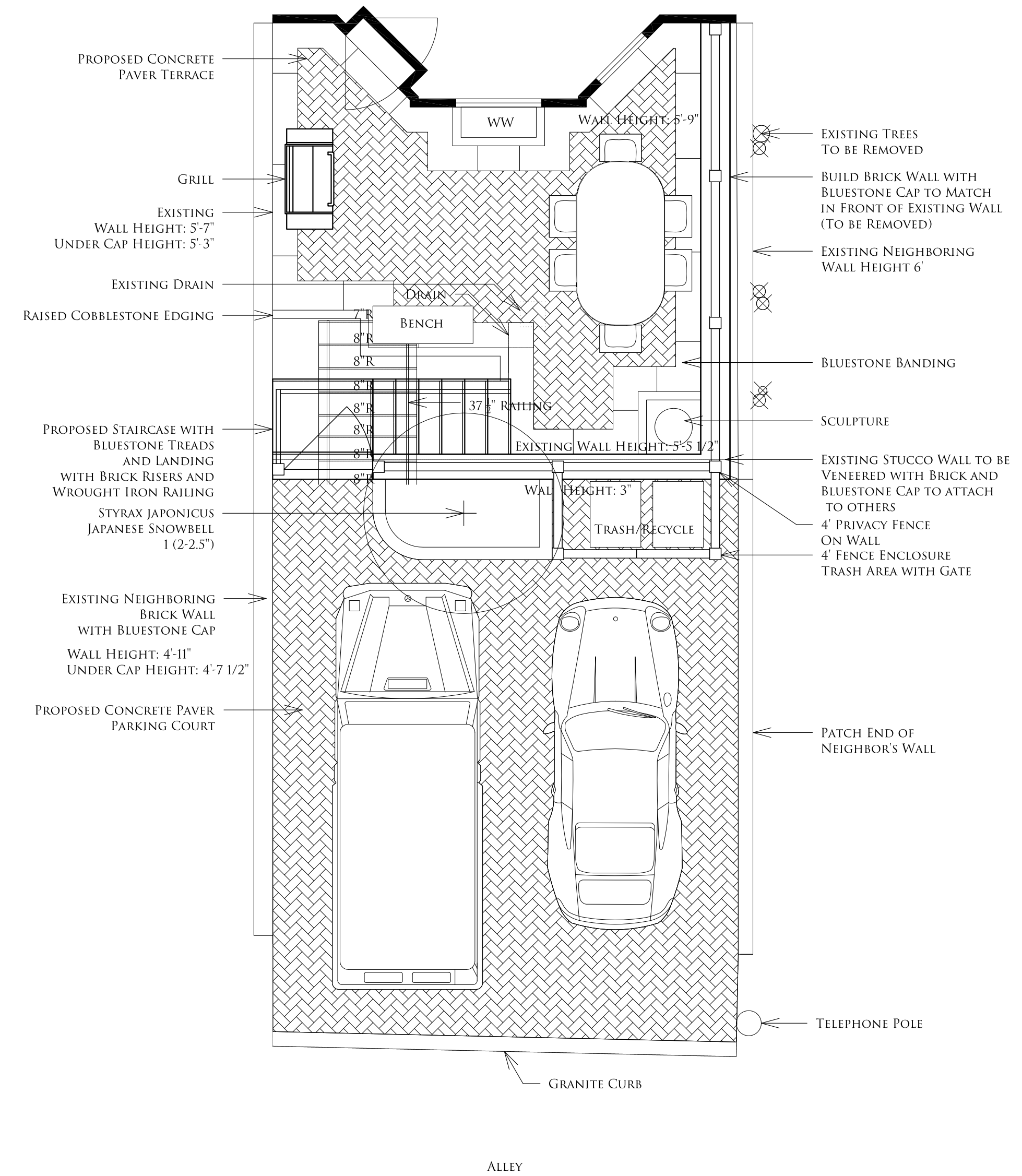
**STEP AND PORTICO REPAIRS:**  
 STEAM PRESSURE WASH STONE SUBSTRATE TO BE WORKED ON. REMOVE EXISTING COATINGS WHERE LOOSE AND DELAMINATED. REMOVE LOOSE AND DELAMINATED STONE. REPLACE FAILED AND REMOVED STONE AREAS WITH CONPROCO MATRIX TO MATCH EXISTING COLOR AS CLOSELY AS POSSIBLE. COAT OVER STONE STEPS WITH CONPROCO TOPCOAT TO MAKE SURFACE UNIFORM AND PROTECT. COAT OVER TOPCOAT WITH CONPROCO MSP SUPER COLOR STAIN TO MATCH ORIGINAL COLOR. COAT STAIR WALLS AND PORTICO ELEMENTS WITH CONPROCO CONPROLASTIC TO MATCH ORIGINAL COLOR.

**GARDEN WALL REPAIRS:**  
 EXCAVATE AND CLEAN STEEL RAILING PENETRATIONS AT STONE. APPLY RUST PREVENTATIVE COATING TO RAILING BASES. REPAIR STONE WITH CONPRO MATRIX TO MATCH EXISTING COLOR AS CLOSELY AS POSSIBLE. COAT WALL WITH CONPROCO CONPROLASTIC TO MATCH ORIGINAL COLOR.

**GARDEN WALL RAILING AND HANDRAIL AT STEPS:**  
 SCRAPE, WIREBRUSH AND REMOVE ALL RUST. APPLY SHERWIN WILLIAMS COROTHANE MIO PRIMER, TOPCOAT WITH TWO COATS OF SHERWIN WILLIAMS COROTHANE II GLOSS BLACK. MARINE GRADE URETHANE STEEL COATING. URETHANE SEALANT JOINT AT ALL STONE PENETRATIONS TO PREVENT MOISTURE MIGRATION INTO STONE POCKETS.



## REAR



**SUDBURY DESIGN GROUP**

740 Boston Post Rd. Sudbury, MA 01776  
 978.443.3638 MA | sudburymdesign.com | 401.789.5889 RI

## PROPOSED DESIGNS DURBIN RESIDENCE

353 BEACON STREET  
 BOSTON, MASS.

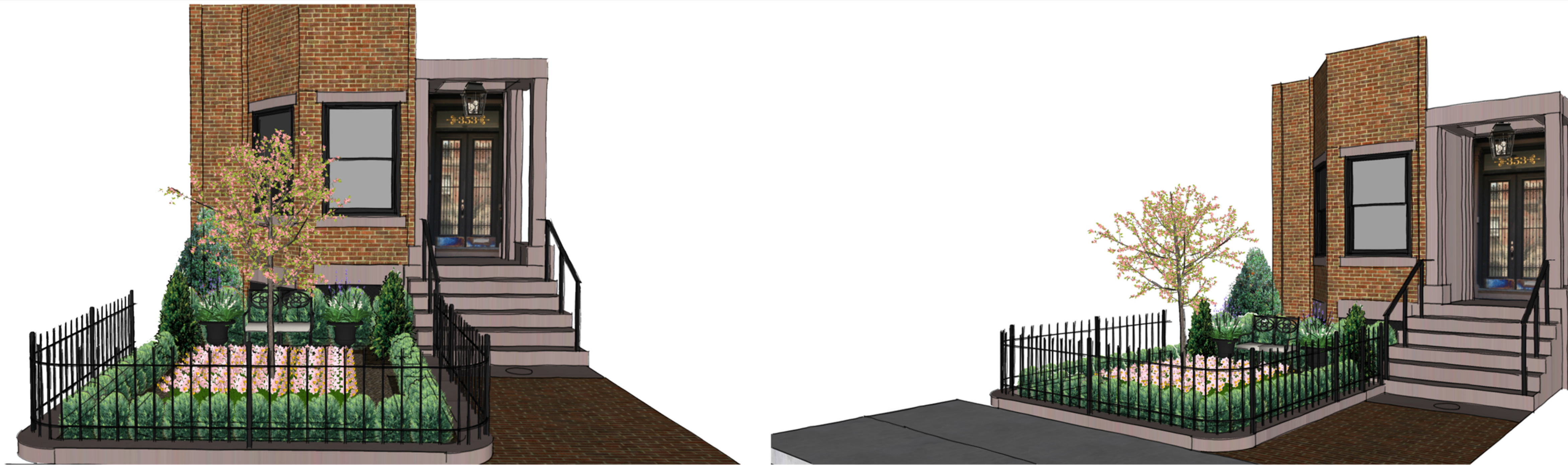
SCALE: 1/4" = 1' - 0"

MARCH 24, 2017 KW  
 APRIL 3, 2017 KW  
 JULY 5, 2017 KW  
 JULY 28, 2017 KW

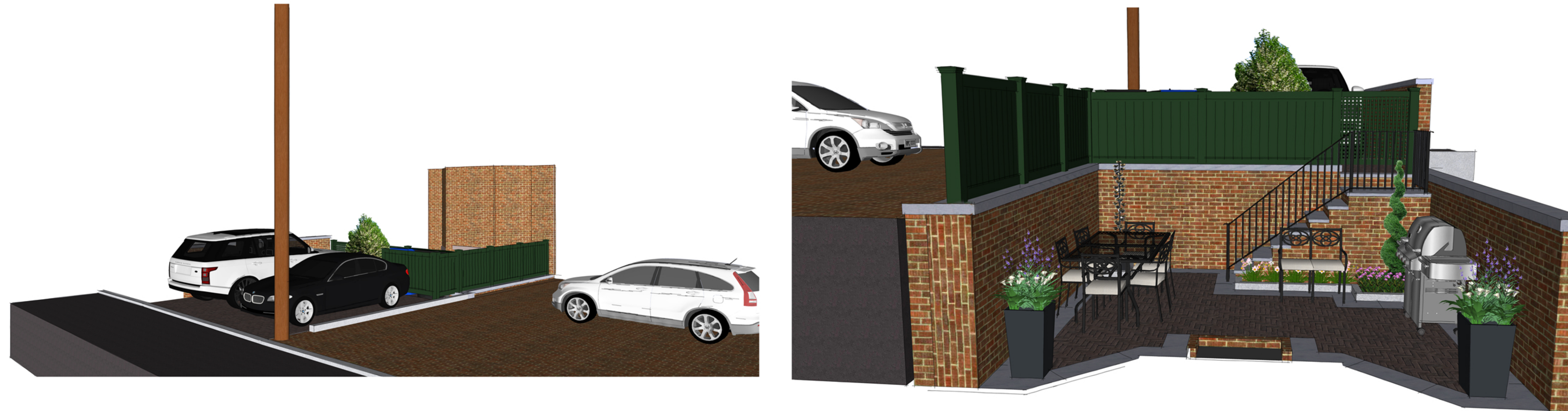


ALL PLANS ARE PROPERTY OF SUDBURY DESIGN GROUP. UNAUTHORIZED USE OR DUPLICATION OF PLANS WITHOUT PRIOR WRITTEN CONSENT IS STRICTLY PROHIBITED.  
COPYRIGHT © 1999 - 2017 BY SUDBURY DESIGN GROUP

FRONT:



REAR:



740 Boston Post Rd. Sudbury, MA 01776  
978.443.3638 MA | sudburydesign.com | 401.789.5889 RI

PROPOSED LANDSCAPE  
PHOTOS

DURBIN RESIDENCE

353 BEACON STREET  
BOSTON, MASS.  
SCALE: NTS  
JULY 5, 2017 KW



ALL PLANS ARE PROPERTY OF SUDBURY DESIGN GROUP. UNAUTHORIZED USE OR DUPLICATION OF PLANS WITHOUT PRIOR WRITTEN CONSENT IS STRICTLY PROHIBITED. COPYRIGHT © 1999 - 2017 BY SUDBURY DESIGN GROUP



HEAVY BLACK ALUMINUM BENCH



HEAVY BLACK ALUMINUM BENCH



HANGING LANTERN



CUSTOM IRON WINDOW BOX HANGER WITH BLACK WINDOW BOX INSERT

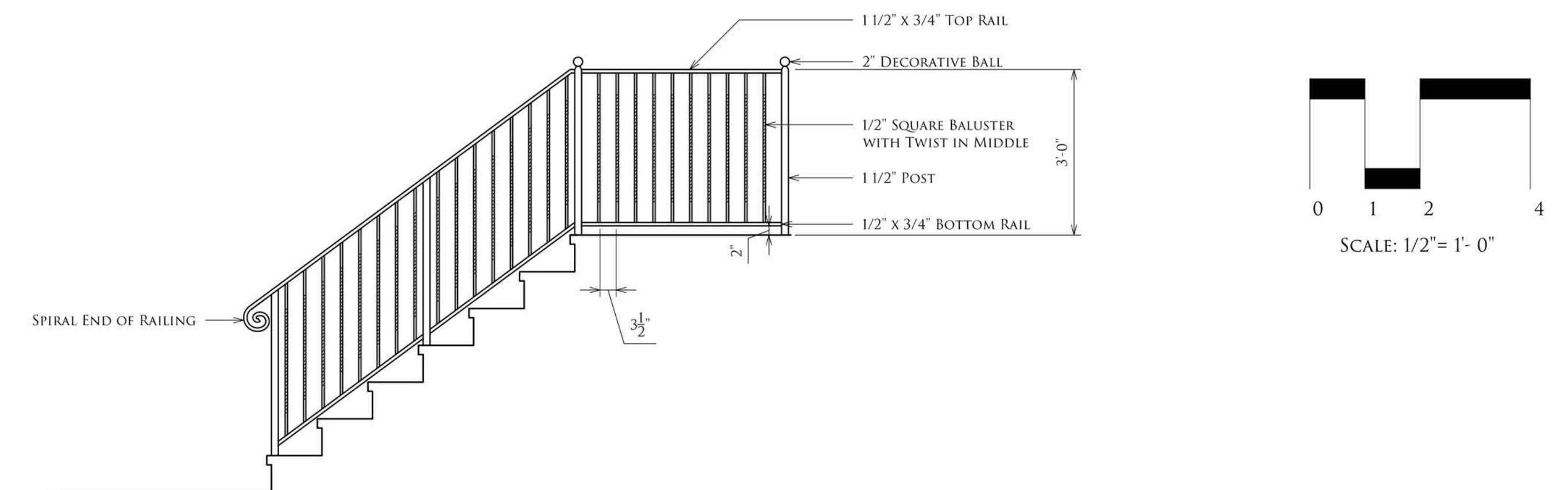


BLACK FIBERGLASS URN (LOOKS LIKE METAL)

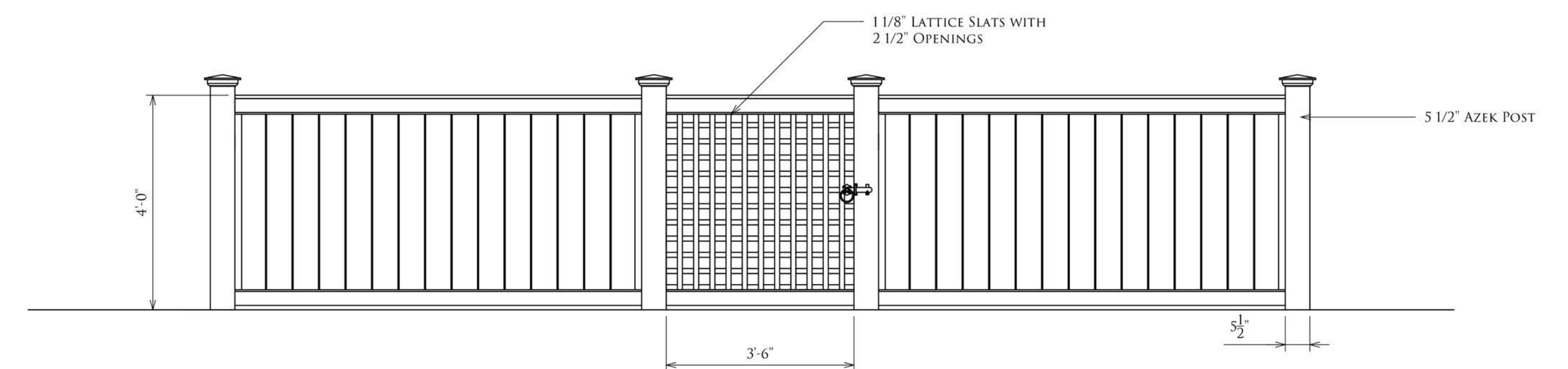


GREEN 4' SOLID BOARD FENCE

3' WROUGHT IRON RAILING - REAR STAIRCASE



4' AZEK UNIVERSAL BOARD FENCE AND AZEK ENGLISH LATTICE GATE - REAR WALL



UNILOCK COPTHORNE PAVER



WROUGHT IRON RAILING BALUSTER



740 Boston Post Rd. Sudbury, MA 01776  
978.443.3638 MA | sudburydesign.com | 401.789.5889 RI

LANDSCAPE ELEMENTS  
DURBIN RESIDENCE

353 BEACON STREET  
BOSTON, MASS.  
SCALE: NTS  
JULY 5, 2017 KW





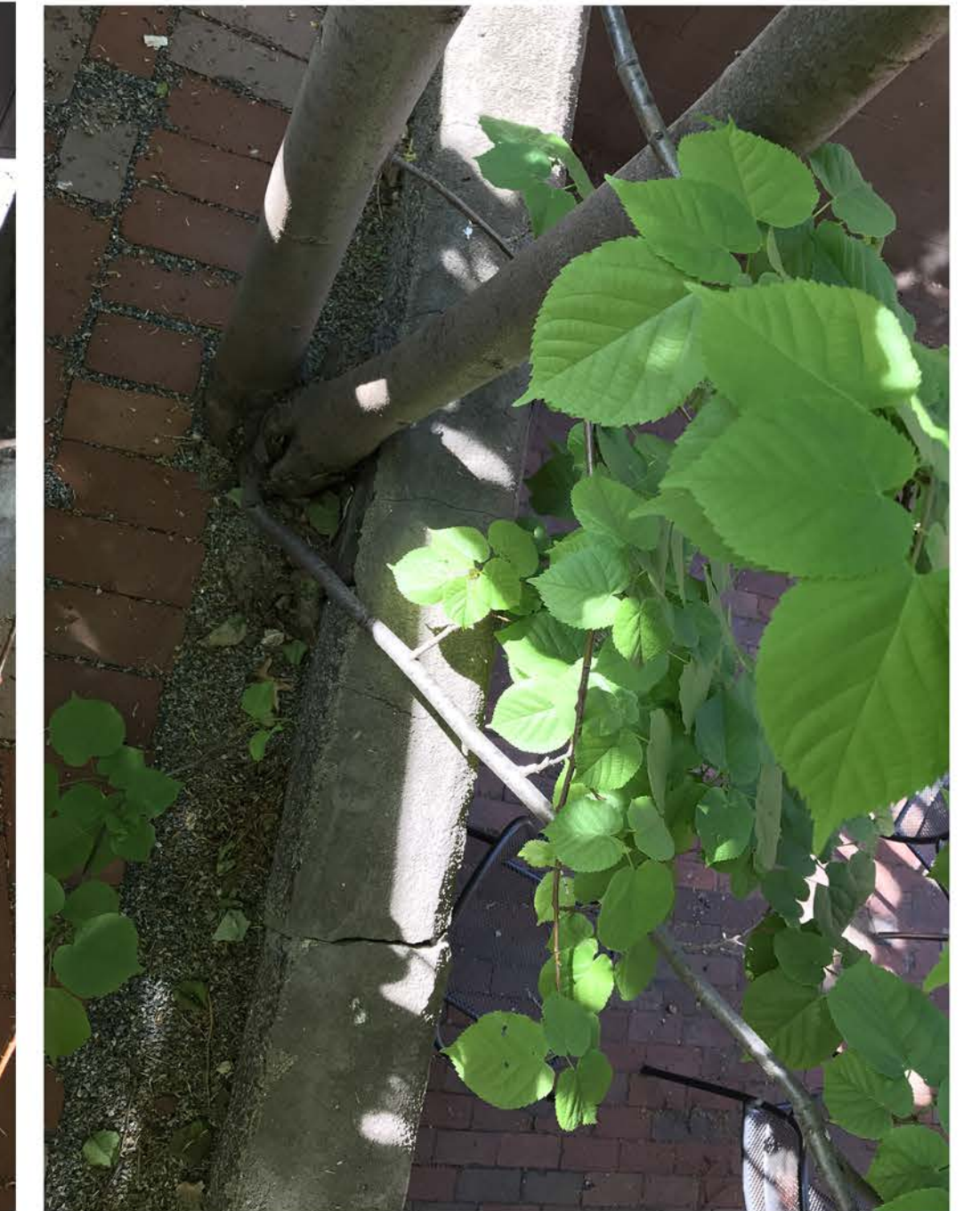
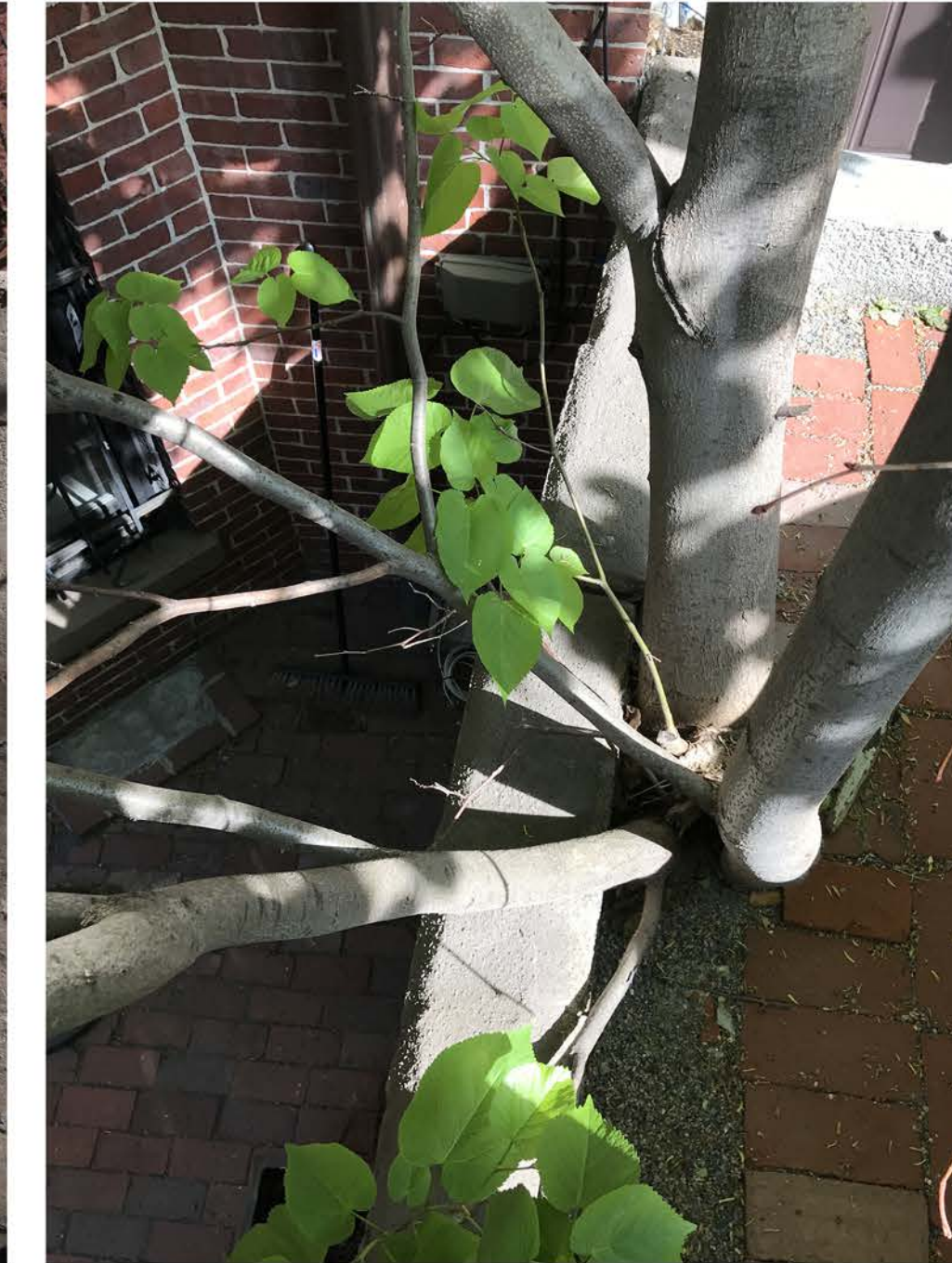
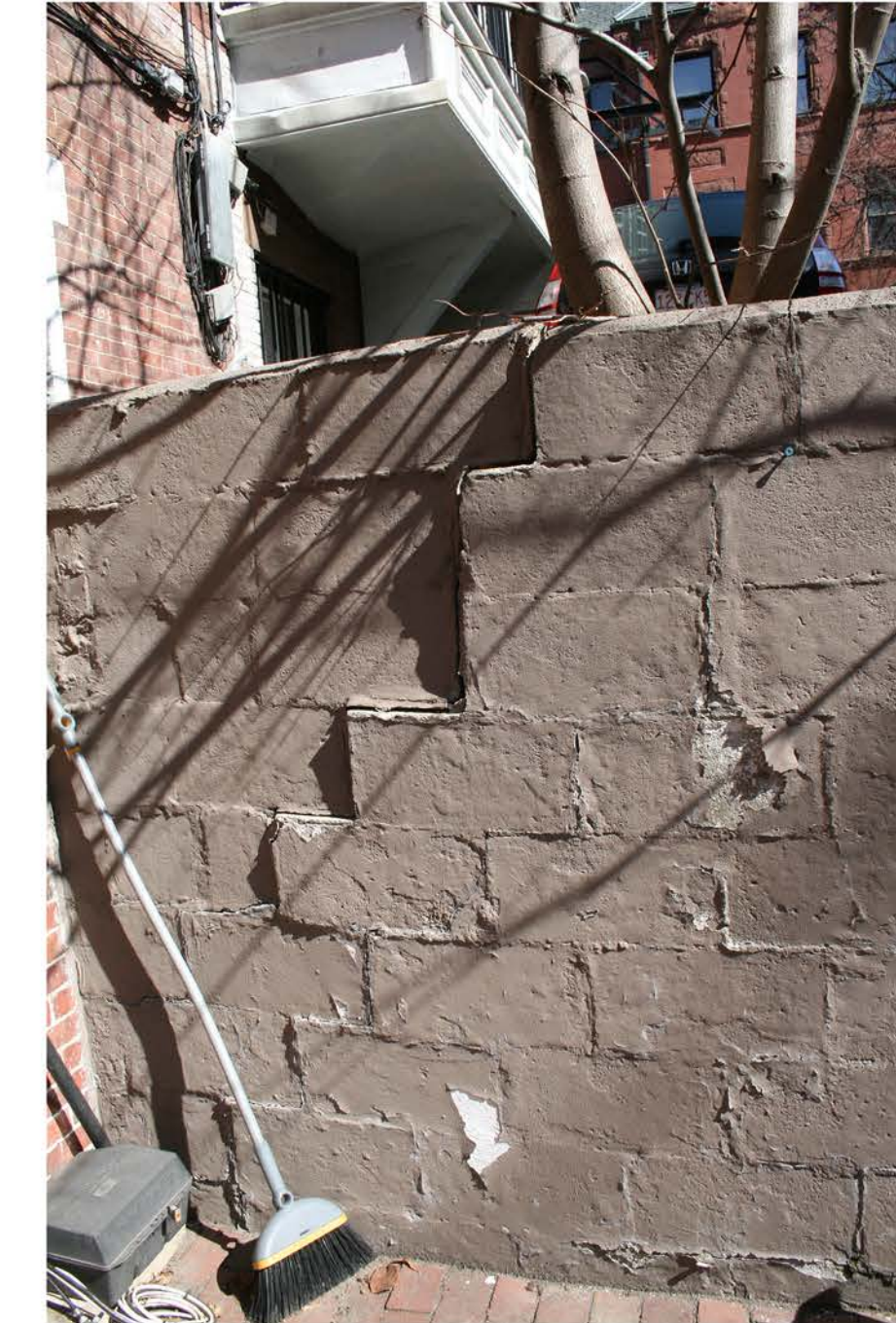
REPLACE EXSITING STAINLESS STEEL HARDWARE (DOOR KNOB AND KICKPLATE) WITH BALDWIN BRASS FIXTURES TO MATCH.



REMOVE 3 TILIA PLATYPHYLLOS (BIG LEAF LINDEN) SEEDLINGS BECAUSE OF LOCATION AND DAMAGE TO WALL (SEE BELOW)



STAIRCASE TO BE RESTORED. SEE NOTE ON PLAN.



POOR CONDITION OF EXISTING WALL DUE TO TREE LOCATION AND GROWTH