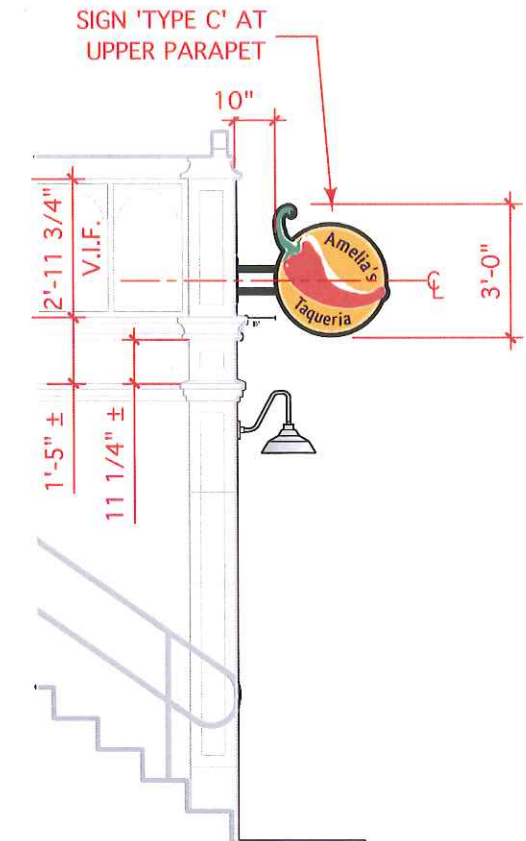


**SIGNAGE & GRAPHICS NOTES:**

1. TYPE A. SIGNS:  
A Single raceway/mount installed on top of existing parapet relief detailing and shall be installed with standoffs to protect relief detailing.  
  
Letter shall be channel cut lettering.  
  
Raceway shall be of metal color or painted to match parapet behind.  
  
Internal illumination provided from an LED light source.
2. TYPE B. SIGNS:  
Applied Letters or Push-Through lettering.  
Background material shall be a maximum of 1" thick and shall remain opaque and shall match color consistent on buildings lower parapet.
3. TYPE C. SIGNS:  
Blade sign shall not exceed projection or dimensions noted in this document. Blade sign can not be internally illuminated. Should tenant want to illuminate sign - illumination shall be provided with a light projected onto the face from an outside sspot source.
4. Electrical boxes, conduits, and transformers shall be concealed as much as possible. Any exposed elements shall be painted to match parapet to reduce visibility.



1 Partial Elevation: Signage  
Scale: 1/4" = 1'-0"

2 Section: Signage Notes  
Scale: 1/4" = 1'-0"



GNC & AMELIA'S TAQUERIA: 1936 - 1940 Beacon Street, Boston, Ma 02135



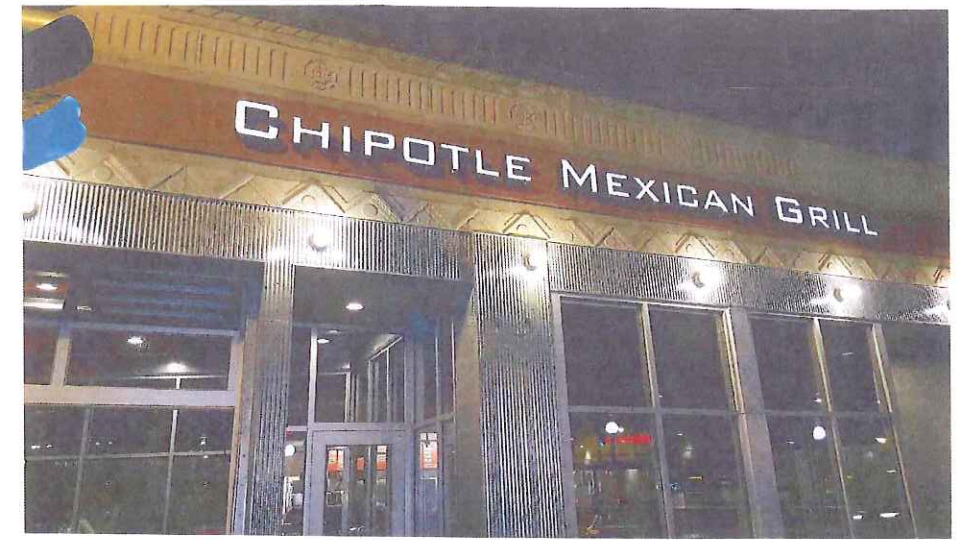
AMELIA'S TAQUERIA: 1936 Beacon Street, Boston, Ma 02135



OLD BLADE SIGN LOCATION:  
1936 Beacon Street, Boston, Ma 02135



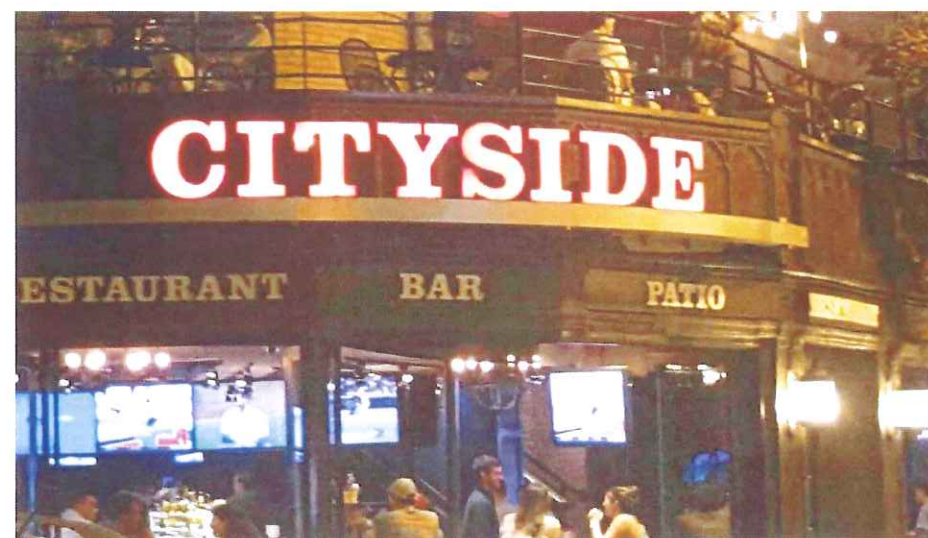
JADE MONKEY (closed): 1952 Beacon Street, Boston, Ma 02135



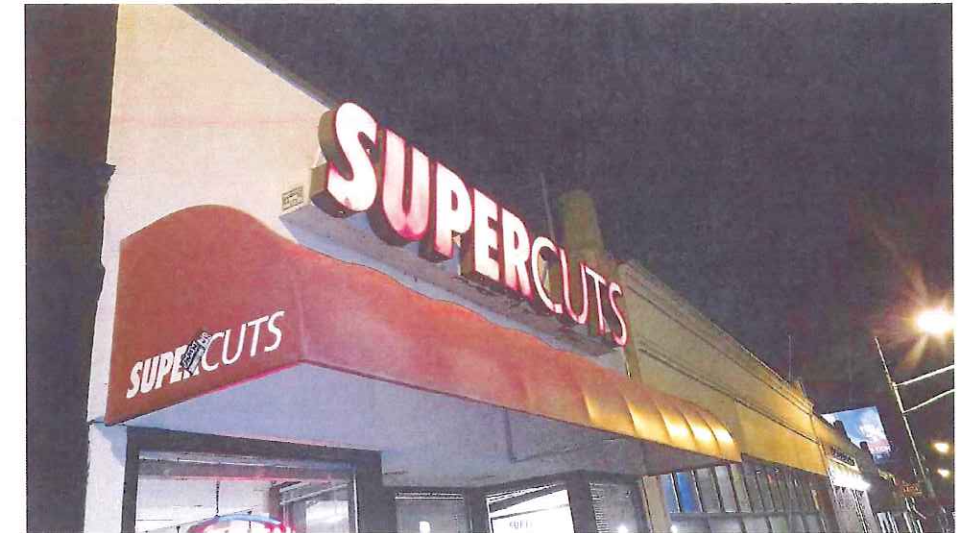
CHIPOTLE: 1924 Beacon Street, Boston, Ma 02135



STARBUCKS: 1948 Beacon Street, Boston, Ma 02135



CITYSIDE: 1960 Beacon Street, Boston, Ma 02135



CHIPOTLE: 1930 Beacon Street, Boston, Ma 02135

# AMELIA'S TAQUERIA

## MAIN ID SIGN

### AMELIA'S TAQUERIA

- 15.5" Letters trimless face channel letters
- 20.85" tall from top of apostrophe to bottom of Q
- 4-1/2" Deep .060" Alum. returns painted to match lighter red of sub copy background
- .090" Alum. Back
- 4" x 4" x 171-3/4" Raceway painted to match building facade

### FRESH MEXICAN GRILL

- 11-1/4" x 195" x 1/8" DiBond
- Digital print with matte lamination
- "fresh mexican grill" 1/2" - flush mounted acrylic letters painted satin white

Existing



### PROJECT

Amelia's Taqueria Sign

### CLIENT

Amelia's Taqueria

### LOCATION

1936 Beacon St.  
Brighton, MA

Date: 8/21/17

Date Due: -/-/-

Drawing by: Matt Roza

### File Location:

Clients/1960 Beacon St/  
Amelias Taqueria

Revisions	Date

Work Order: 00000



236 Pearl Street  
Somerville, MA 02145  
t: 617.623.6222  
f: 617.623.6226  
www.SRPSIGNS.com

All drawings as well as creative content are the property of SRP Sign Corporation. You must have written consent by SRP Sign Corporation prior to disclosure, reproduction or use outside of your organization.

**AMELIA'S TAQUERIA**  
MAIN ID SIGN

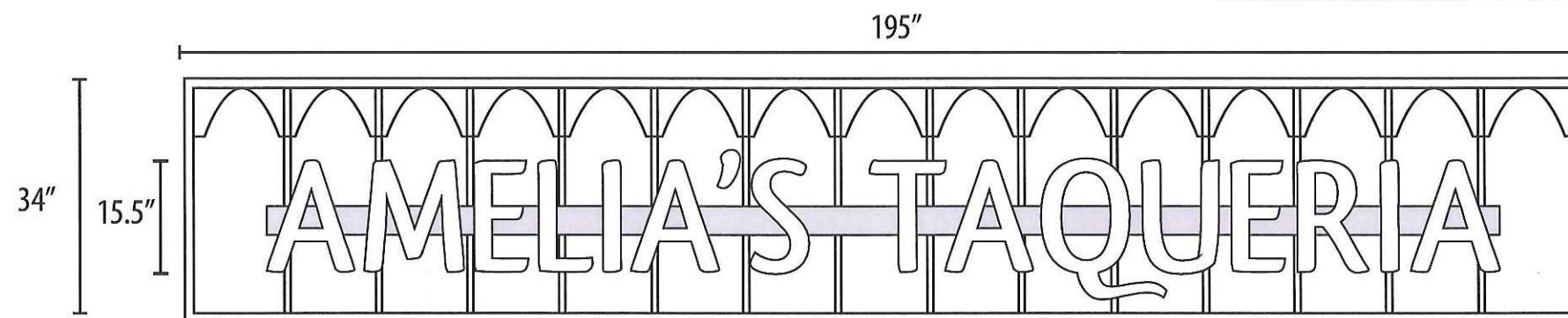
**AMELIA'S TAQUERIA**

- 15.5" Letters trimless face channel letters
- 20.85" tall from top of apostrophe to bottom of Q
- 4-1/2" Deep .060" Alum. returns painted to match lighter red of sub copy background
- .090" Alum. Back
- 4" x 4" x 171-3/4" Raceway painted to match building facade

**FRESH MEXICAN GRILL**

- 11-1/4" x 195" x 1/8" DiBond
- Digital print with matte lamination
- "fresh mexican grill" 1/2" - flush mounted acrylic letters painted satin white

Existing



**PROJECT**

Amelia's Taqueria Sign

**CLIENT**

Amelia's Taqueria

**LOCATION**

1936 Beacon St.  
Brighton, MA

**Date:** 8/21/17

**Date Due:** -/-/ -

**Drawing by:** Matt Roza

**File Location:**

Clients/1960 Beacon St/  
Amelias Taqueria

**Revisions**

**Date**

Revisions	Date

Work Order: 00000

**SRPSIGN**  
CORPORATION

236 Pearl Street  
Somerville, MA 02145  
t: 617.623.6222  
f: 617.623.6226  
www.SRPSIGNS.com

All drawings as well as creative content are the property of SRP Sign Corporation. You must have written consent by SRP Sign Corporation prior to disclosure, reproduction or use outside of your organization.

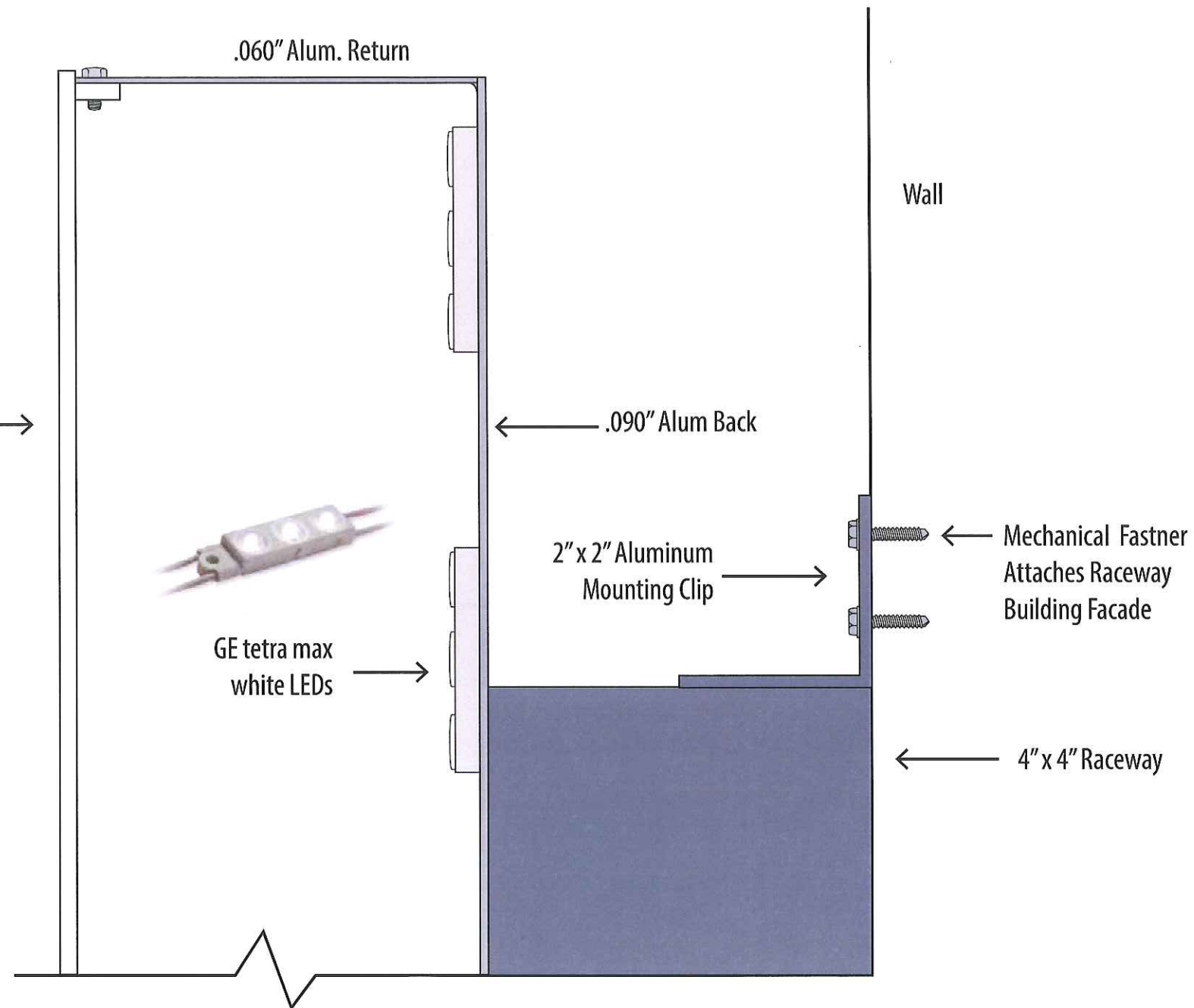
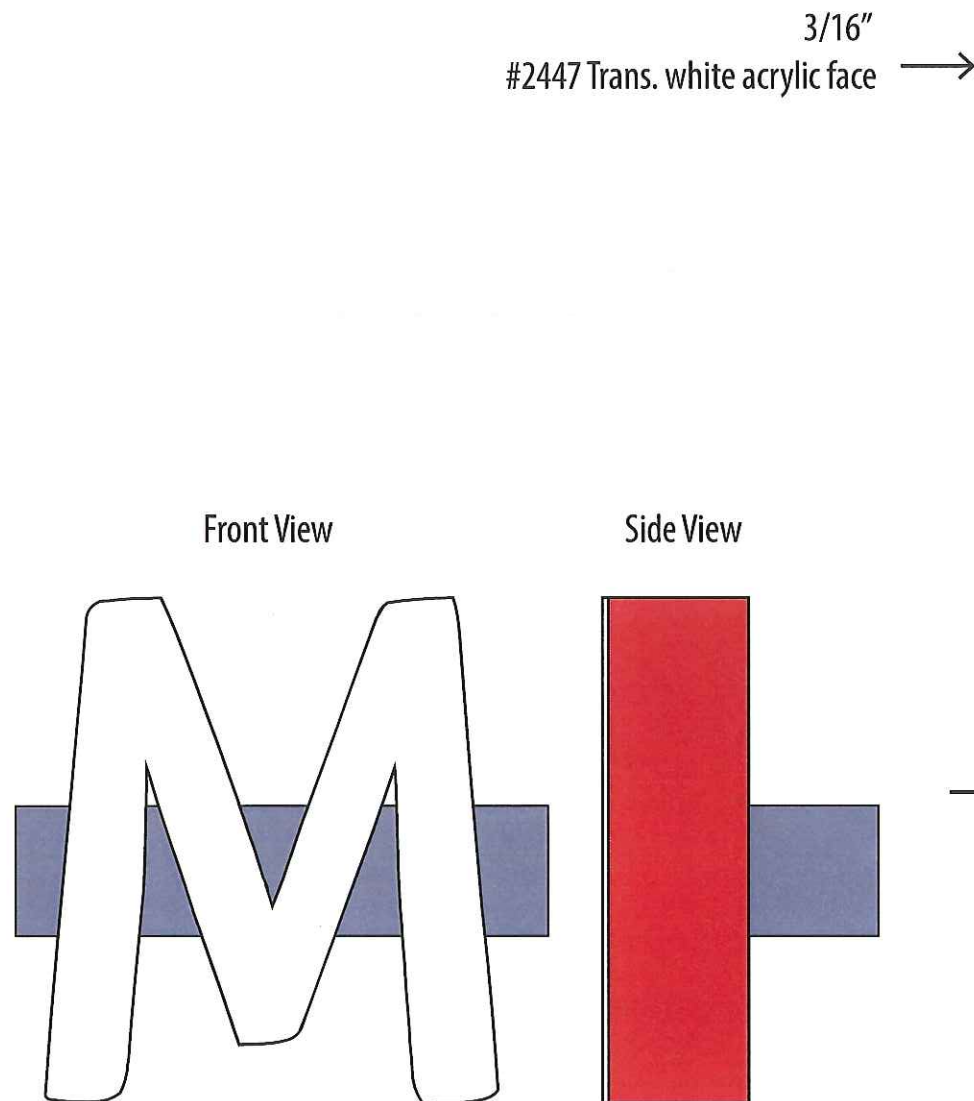
V.I.F: Verify in field

# AMELIA'S TAQUERIA

## LETTER DETAIL

### AMELIA'S TAQUERIA

- 15.5" Letters trimless face channel letters
- 20.85" tall from top of apostrophe to bottom of Q
- 4-1/2" Deep .060" Alum. returns painted to match lighter red of sub copy background
- .090" Alum. Back
- 4" x 4" x 171-3/4" Raceway painted to match building facade



### PROJECT

Amelia's Taqueria Sign

### CLIENT

Amelia's Taqueria

### LOCATION

1936 Beacon St.  
Brighton, MA

Date: 8/21/17

Date Due: -/-/-

Drawing by: Matt Roza

### File Location:

Clients/1960 Beacon St/  
Amelias Taqueria

Revisions	Date

Work Order: 00000

**SRP**SIGN  
CORPORATION

236 Pearl Street  
Somerville, MA 02145  
t: 617.623.6222  
f: 617.623.6226  
www.SRPSIGNS.com

All drawings as well as creative content are the property of SRP Sign Corporation. You must have written consent by SRP Sign Corporation prior to disclosure, reproduction or use outside of your organization.

**AMELIA'S TAQUERIA**  
SUB COPY

**FRESH MEXICAN GRILL**

- 5.5" H x .5" satin white acrylic letters
- full coverage VHB tape for mounting DiBond
- 195"W x 11-1/4" H x 1/8" DiBond panel
- with matte laminated digital print



Front View



Side View



**PROJECT**

Amelia's Taqueria Sign

**CLIENT**

Amelia's Taqueria

**LOCATION**

1936 Beacon St.  
Brighton, MA

**Date:** 8/21/17

**Date Due:** -/-/

**Drawing by:** Matt Roza

**File Location:**

Clients/1960 Beacon St/  
Amelias Taqueria

Revisions	Date

Work Order: 00000

**SRP SIGN**  
CORPORATION

236 Pearl Street  
Somerville, MA 02145  
t: 617.623.6222  
f: 617.623.6226  
www.SRPSIGNS.com

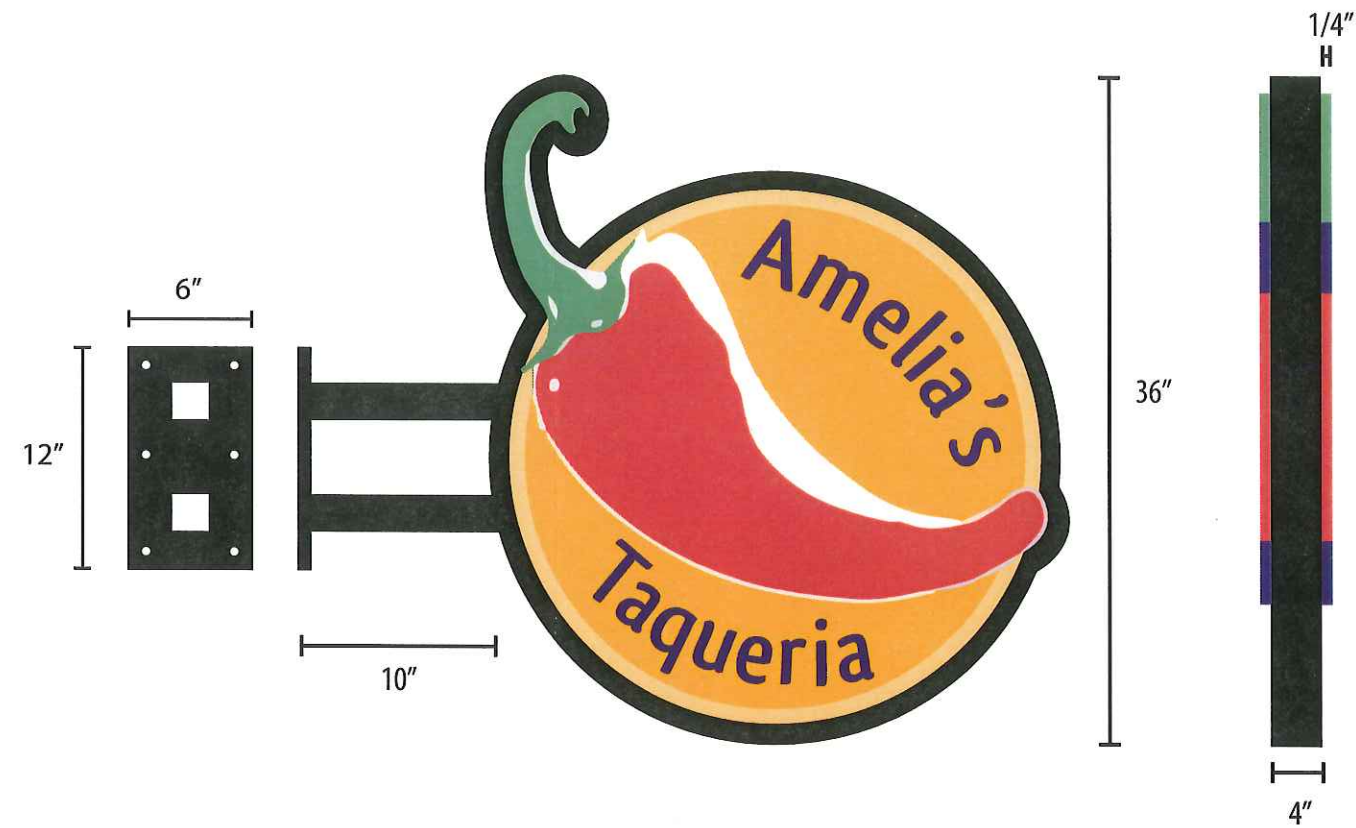
All drawings as well as creative content are the property of SRP Sign Corporation. You must have written consent by SRP Sign Corporation prior to disclosure, reproduction or use outside of your organization.

**3**

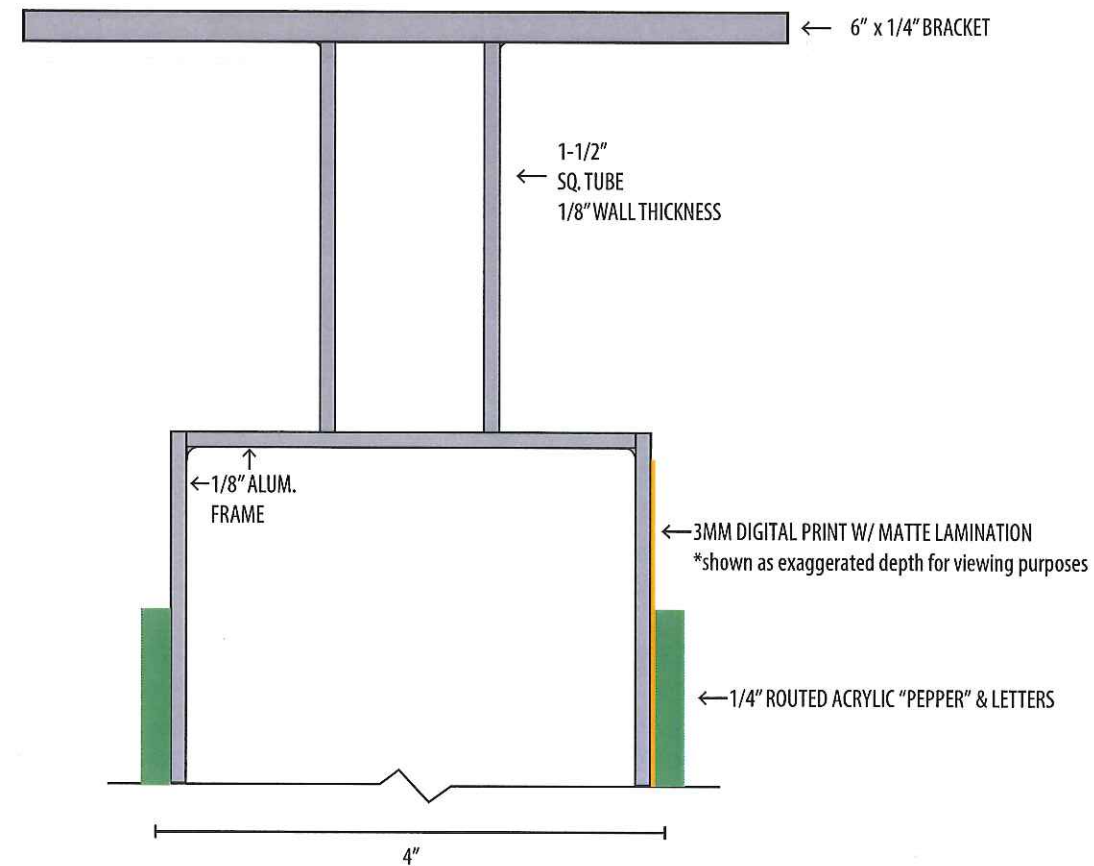
\*letters shown in black for view purposes, actual letters will be painted satin white

# AMELIA'S TAQUERIA BLADE SIGN

- 36" height
- Non-illuminated
- Orange/White background digital print with matte laminate
- "Pepper" 1/4" painted acrylic
- "Amelia's Taqueria" 1/4" painted acrylic
- Bracket and returns painted satin black



Section View



## PROJECT

Amelia's Taqueria Sign

## CLIENT

Amelia's Taqueria

## LOCATION

1936 Beacon St.  
Brighton, MA

Date: 8/21/17

Date Due: -/-/-

Drawing by: Matt Roza

## File Location:

Clients/1960 Beacon St/  
Amelias Taqueria

Revisions	Date

Work Order: 00000

**SRPSIGN**  
CORPORATION

236 Pearl Street  
Somerville, MA 02145  
t: 617.623.6222  
f: 617.623.6226  
www.SRPSIGNS.com

All drawings as well as creative content are the property of SRP Sign Corporation. You must have written consent by SRP Sign Corporation prior to disclosure, reproduction or use outside of your organization.