

Roof Top Equipment & Window Grate Summary 300 Summer Street

Fort Point Channel Landmark District Application for Design Approval

20 September 2017

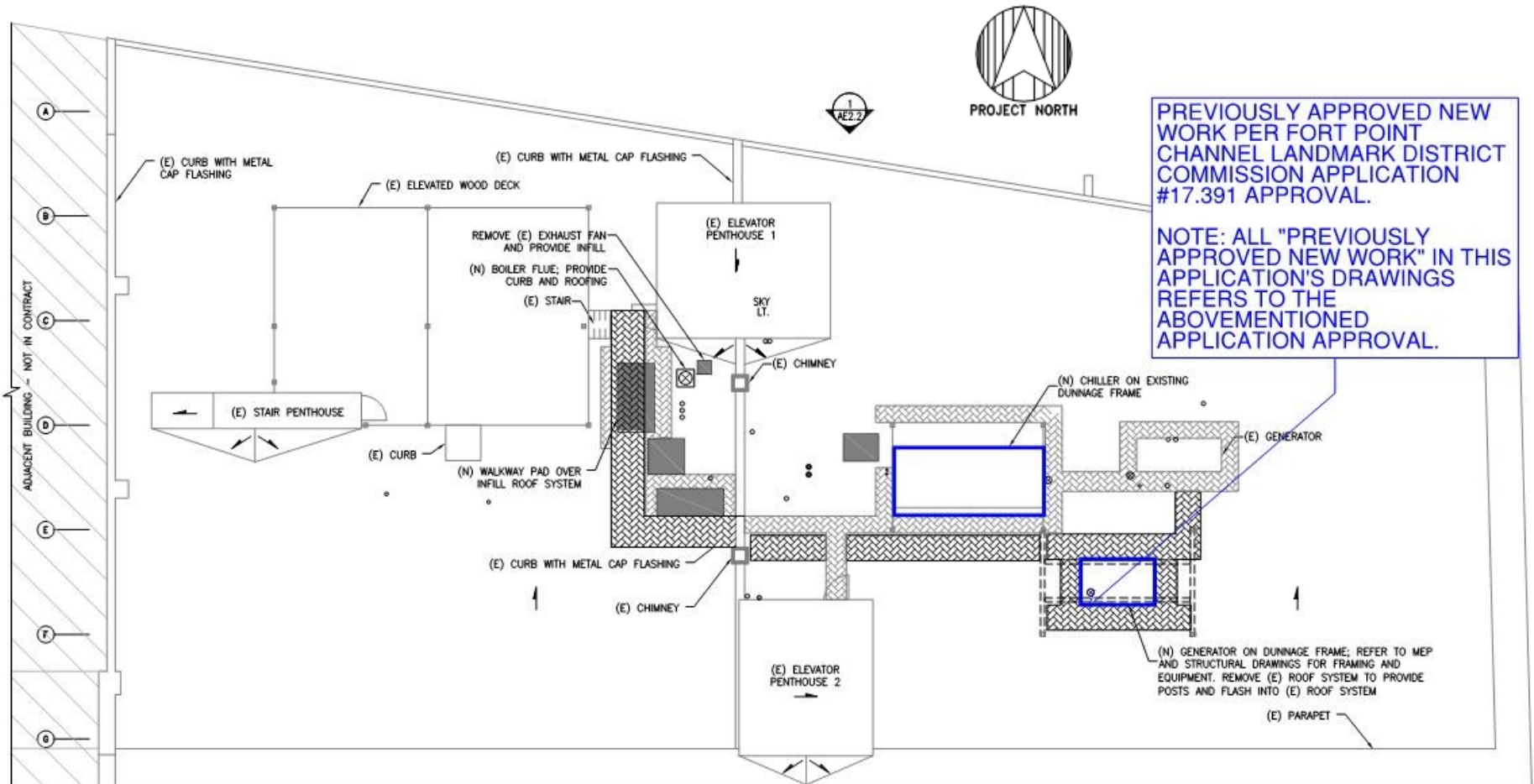
Roof Top Equipment

300 Summer Street

Roof Existing Conditions



Proposed Rooftop Equipment Changes



South Elevation Existing Conditions



Proposed Rooftop Equipment Changes



East Elevation Existing Conditions



Proposed Rooftop Equipment Changes



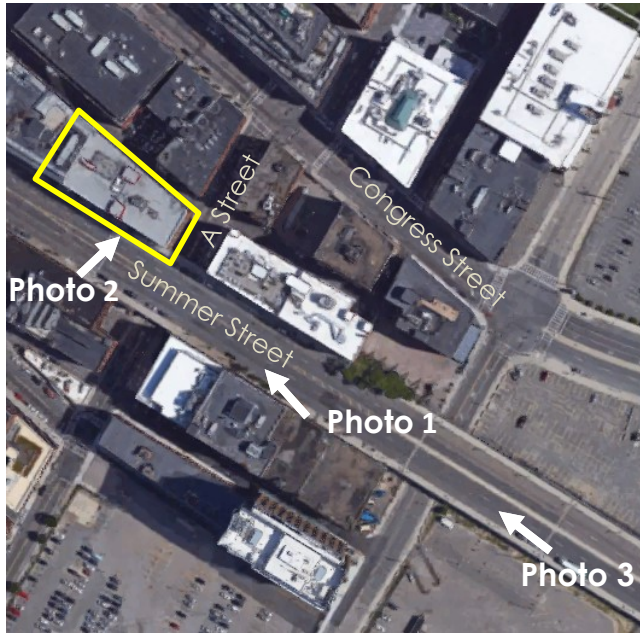
North Elevation Existing Conditions



Proposed Rooftop Equipment Changes



Proposed Rooftop Equipment Changes



Proposed Rooftop Equipment Changes



Window Grates

300 Summer Street

Existing Conditions – North Elevation Alleyway



Existing Conditions



Existing Window with Grate



Existing Windows without Grates

Existing North Elevation Window Grates



EXISTING WINDOWS WITH GRATES

Proposed Window Grate Additions



16 15 14 13 12 11 10 9 8 7 6 5 4 3 2 1

NOTE:

1. PLACEMENT ON A LEVEL SURFACE FREE OF OBSTRUCTIONS (INCLUDING SNOW, FOR WINTER OPERATION) OR AIR-CIRCULATION ENSURES RATE PERFORMANCE, RELIABLE OPERATION AND EASE OF MAINTENANCE. SITE RESTRICTIONS MAY COMPROMISED MINIMUM CLEARANCES INDICATED BELOW, RESULTING IN UNPREDICTABLE AIR FLOW PATTERNS AND POSSIBLE DIMINISHED PERFORMANCE. JOHNSON CONTROLS UNIT CONTROLS WILL OPTIMIZE OPERATION WITHOUT NUISANCE HIGH PRESSURE SAFETY CUTOFF. HOWEVER, THE SYSTEM DESIGNER MUST CONSIDER POTENTIAL PERFORMANCE DEGRADATION.

1.1. RECOMMENDED MINIMUM CLEARANCES:

- 1.1.1. SIDE TO WALL - 1828.8mm [72.00]
- 1.1.2. REAR TO WALL - 1828.8mm [72.00]
- 1.1.3. CONTROL PANEL TO WALL - 1219.2mm [48.00]
- 1.1.4. TOP - NO OBSTRUCTIONS ALLOWED.
- 1.1.5. DISTANCE BETWEEN ADJACENT UNITS - 3048mm [120.00]
- 1.1.6. NO MORE THAN ONE ADJACENT WALL MAY BE HIGHER THAN UNIT.

2. WEIGHT AND CENTRE OF GRAVITY- REF TO AVM REPORT.

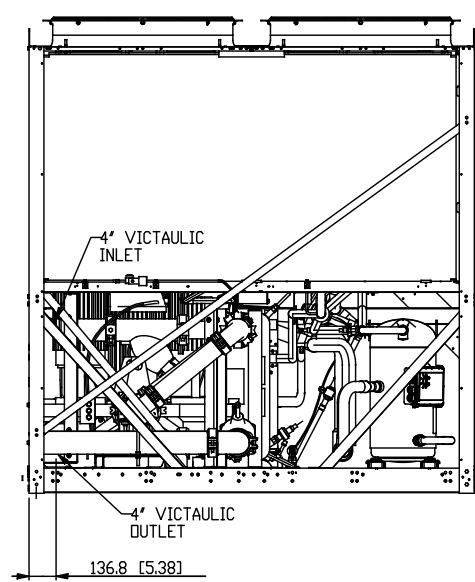
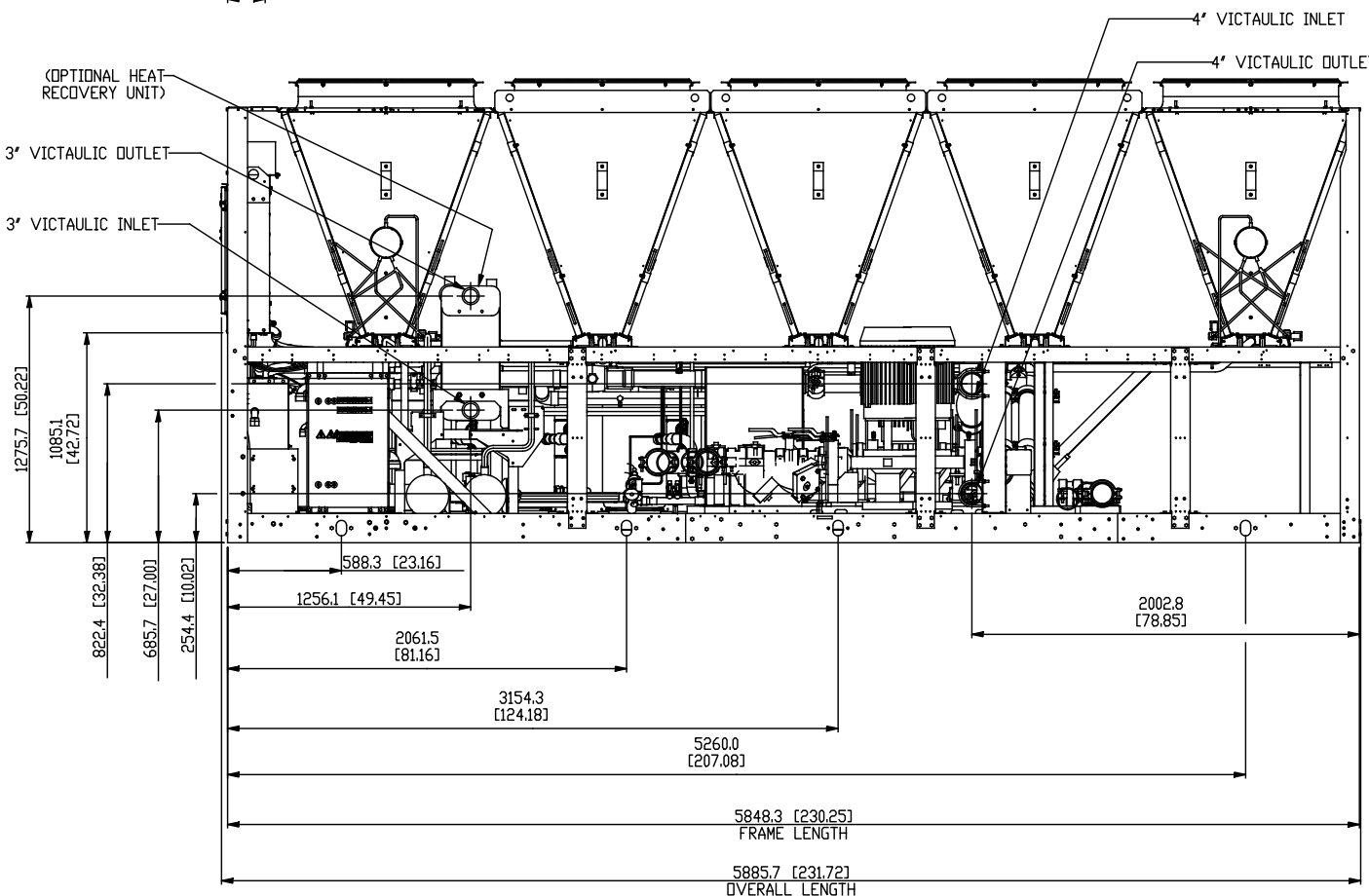
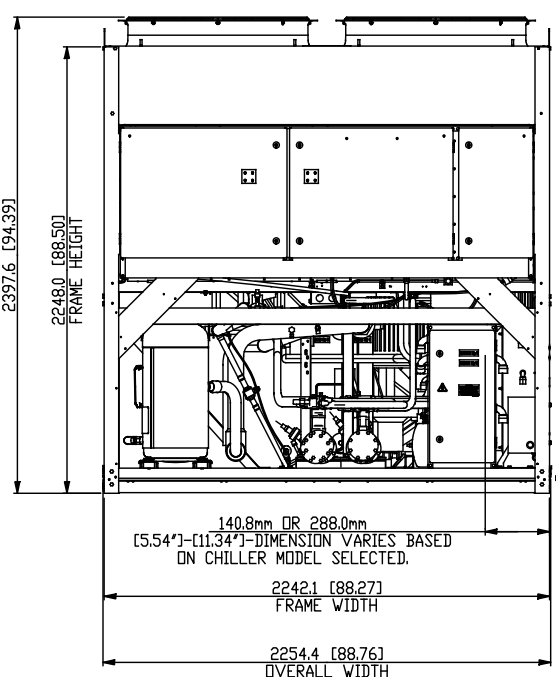
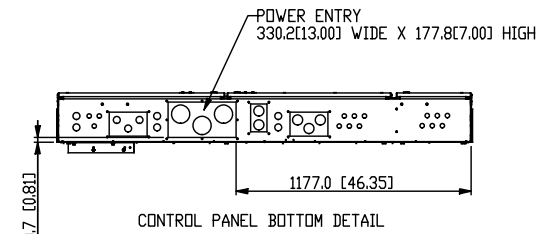
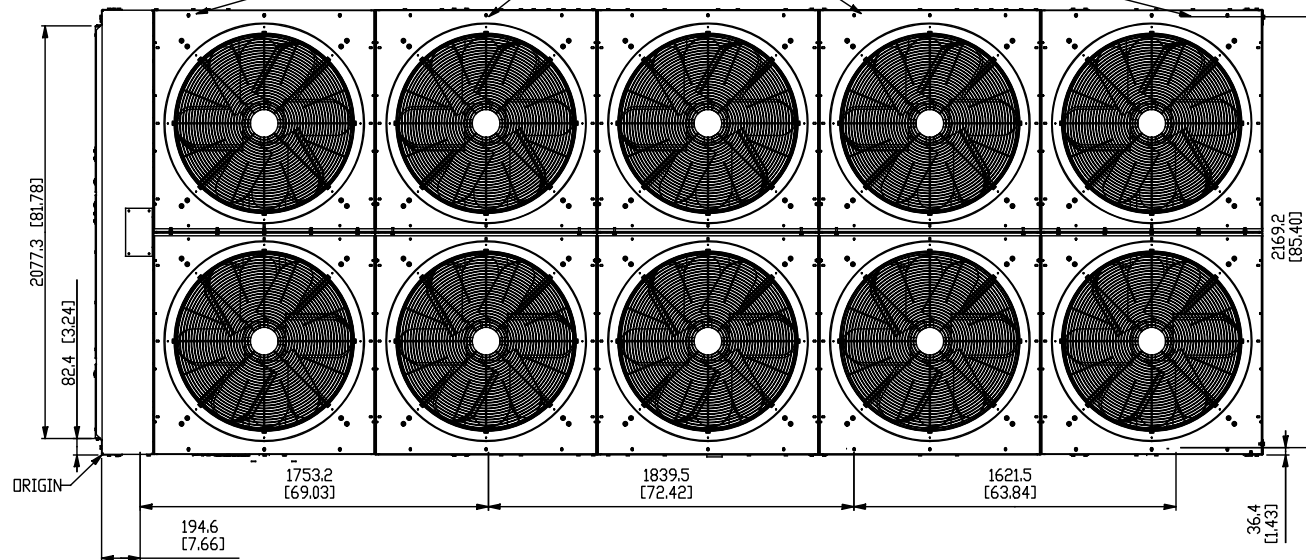
3. INSTALLING CONTRACTOR MUST INCLUDE VENT AND DRAIN ACCOMMODATIONS IN CHILLED WATER PIPING NEAR EVAPORATOR.

4. NUMBER OF COMPRESSORS MAY VARY FROM DRAWING.

4.1. REFER TO YORKWORKS REPORTS.

5. FOR MONTERREY, MEXICO AND SAN ANTONIO, TEXAS BUILDS ONLY.

15.9mm(5/8") DIA MOUNTING HOLES(TYP.)



DRAWING TOLERANCES	
TOLERANCES IN TABLE APPLY UNLESS OTHERWISE SPECIFIED IN DIMENSIONS ON THE DRAWING	
XXX.00000	±0.15mm [0.005]
XXXX.00000	±0.25mm [0.010]
XXXXX.0000000	±0.35mm [0.014]
ANGLES	±1°

THIS DRAWING PERTAINS TO THE FOLLOWING MODELS:		
YLAA 0156 HE	YLAA 0170 SE	YLAA 0175 HE

REV.	DATE	EC. NO.	DR.	CHK.	ENG.
B	22-AUG-2016	DX16-0278	AJF	AJF	
CHANGED "INLET" AND "OUTLET" NOTES AT F12.					
ADDED "HEAT RECOVERY UNIT" NOTE AT G12.					

"ALL PROPRIETARY RIGHTS IN THE SUBJECT MATTER HEREOF ARE RESERVED AND NO PERMISSION IS GRANTED TO REPRODUCE THIS PRINT OR WHOLE OR IN ANY PART, OR DISCLOSE ANY OF THE INFORMATION HEREON TO OTHERS WITHOUT WRITTEN RELEASE BY JOHNSON CONTROLS INCORPORATED"

THIRD ANGLE

JOHNSON CONTROLS

EFFICIENCY

507 EAST MICHIGAN STREET, MILWAUKEE, WI, 53202 USA

DO NOT SCALE

YLA 10-FAN 50 & 60HZ WITH OPTIONAL HEAT RECOVERY

MATERIAL: N/A
ENG. STD: N/A
PART NO: N/A
CUT SIZE: N/A

DRAWN: M.LUPTON	DATE: 06-DEC-2013	A1	CAGE NUMBER 66935	DRAWING NUMBER 035-24059-012	REVISION 3
CHECKED: A.SAYCH	DATE: 06-DEC-2013				
SCALE: 1:000	MASS (kg): 0.000				

16 15 14 13 12 11 10 9 8 7 6 5 4 3 2 1

Current Conditions



South Elevation

September 2017
300 Summer Street, Boston, MA 02210



Partial South Elevation

September 2017
300 Summer Street, Boston, MA 02210



Partial South Elevation

At East Corner

September 2017
300 Summer Street, Boston, MA 02210



East Elevation

September 2017
300 Summer Street, Boston, MA 02210



East and North Elevation

View From A Street

September 2017
300 Summer Street, Boston, MA 02210



Partial North Elevation

Looking East

September 2017
300 Summer Street, Boston, MA 02210



Partial North Elevation

West End of Building and Adjacent Property

September 2017
300 Summer Street, Boston, MA 02210



Roof Details

East Roof Overview

September 2017
300 Summer Street, Boston, MA 02210



Roof Details

Existing Generator Detail

September 2017
300 Summer Street, Boston, MA 02210



Roof Details

West Roof Overview

September 2017
300 Summer Street, Boston, MA 02210



Roof Details

Existing Skylight and Equipment Details

September 2017
300 Summer Street, Boston, MA 02210



New Roof

September 2017
300 Summer Street, Boston, MA 02210



New Roof

September 2017
300 Summer Street, Boston, MA 02210



New Roof

September 2017
300 Summer Street, Boston, MA 02210



Partial North Elevation

September 2017
300 Summer Street, Boston, MA 02210



Existing Window Grate

September 2017
300 Summer Street, Boston, MA 02210