



VIEW 9



VIEW 9



VIEW 16



VIEW 13



VIEW 14



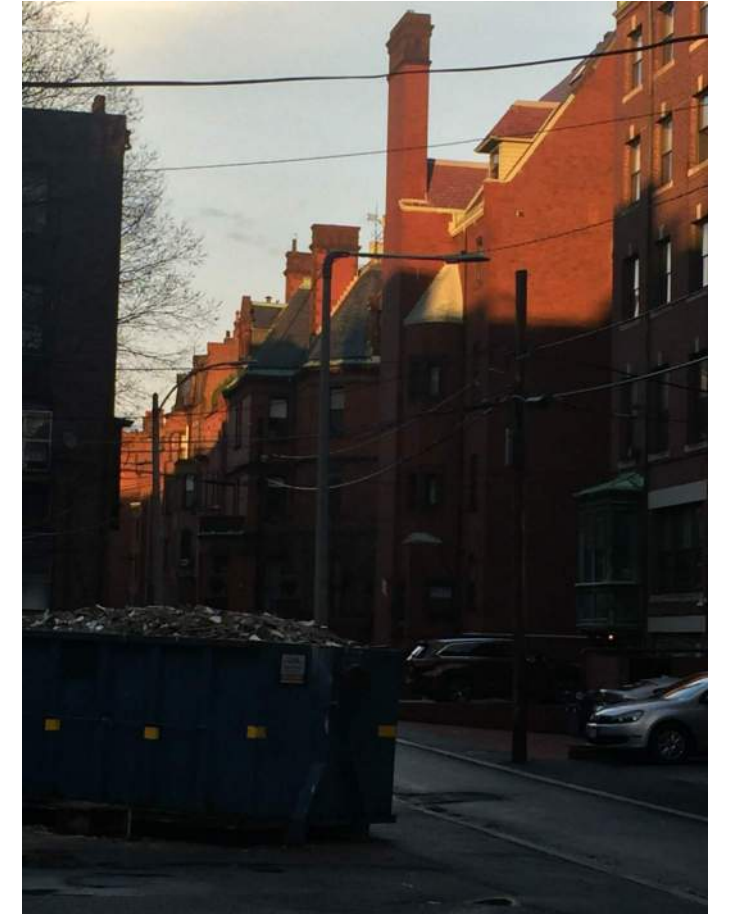
VIEW 11



VIEW 11

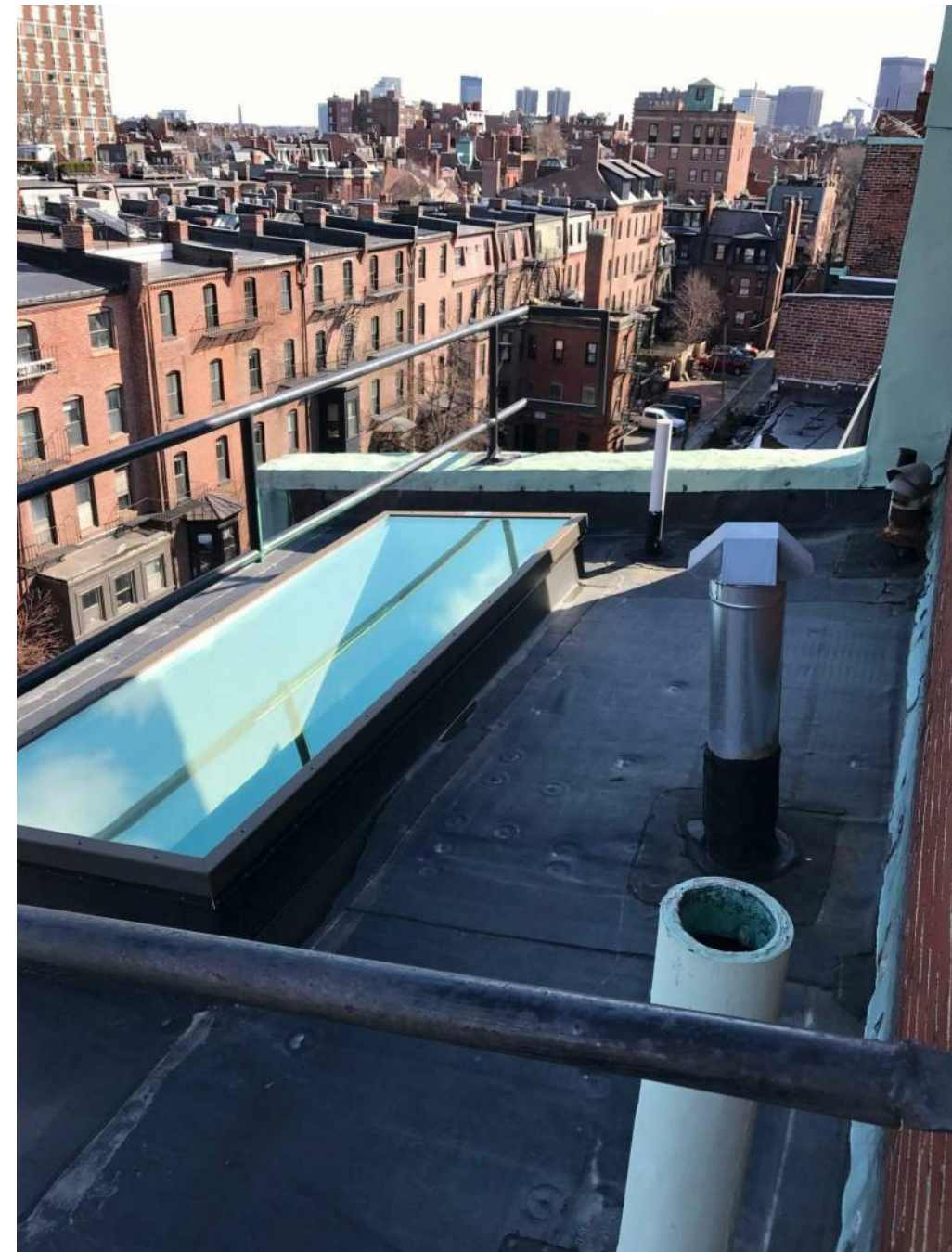
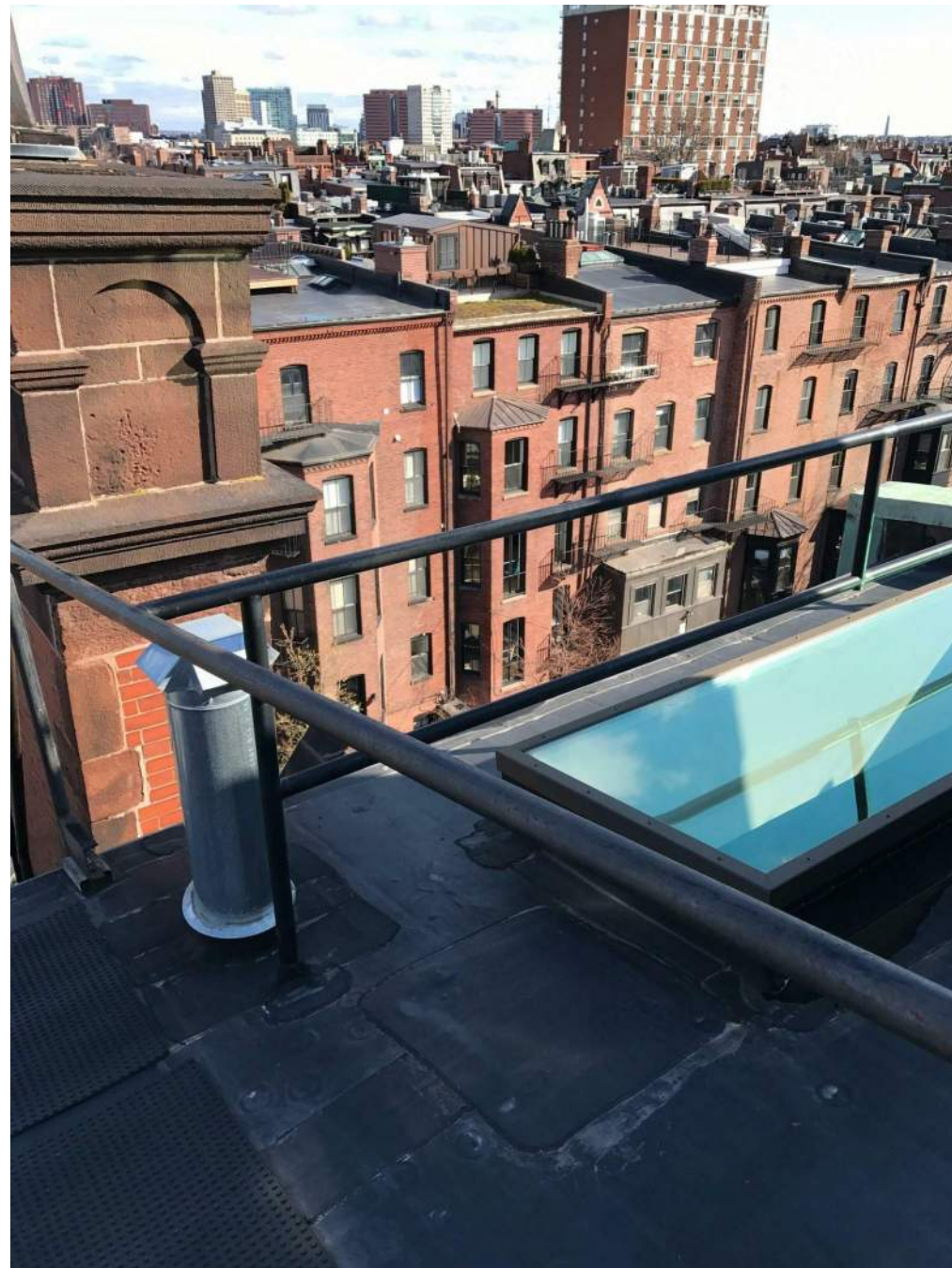
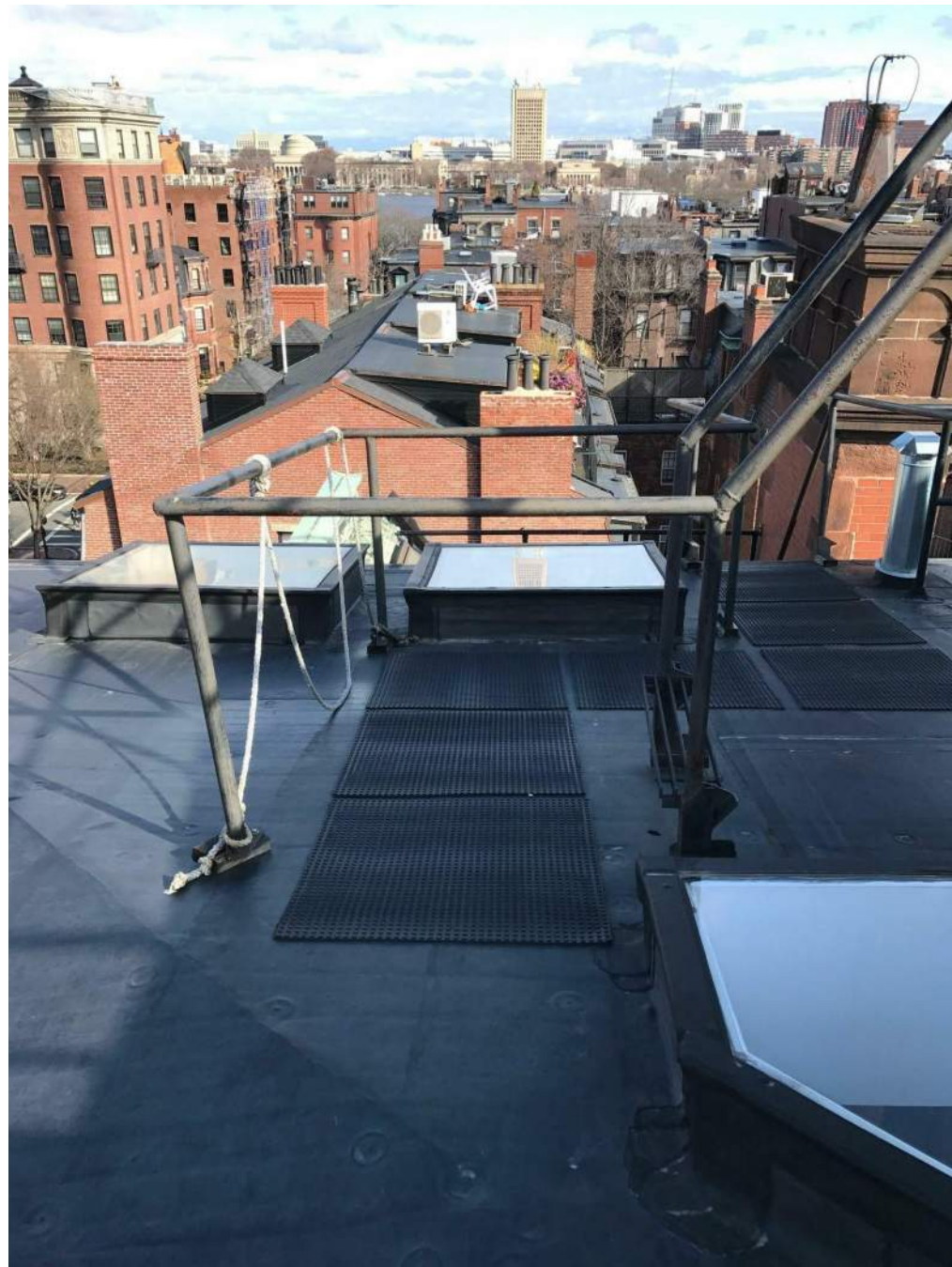


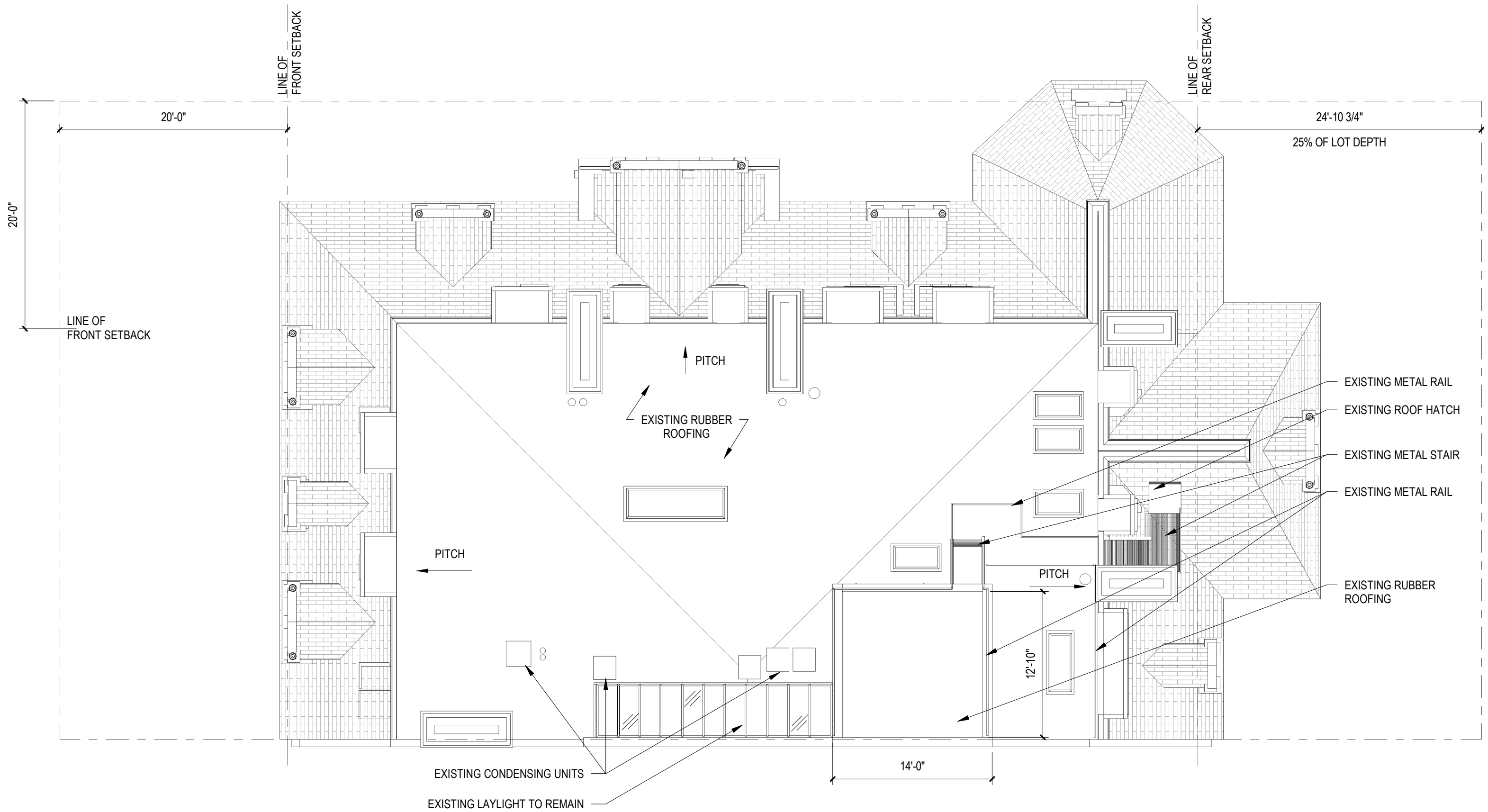
VIEW 10

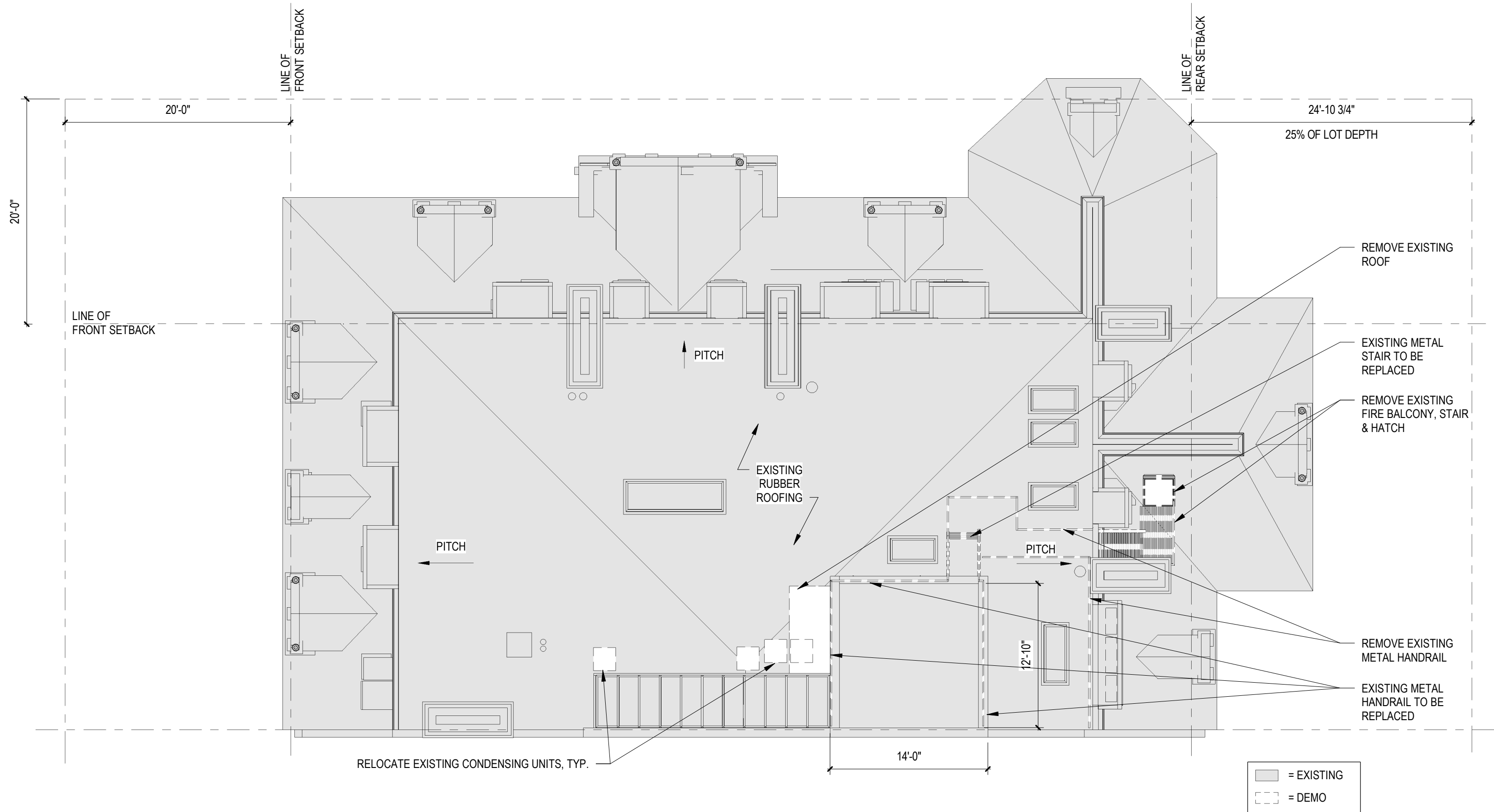


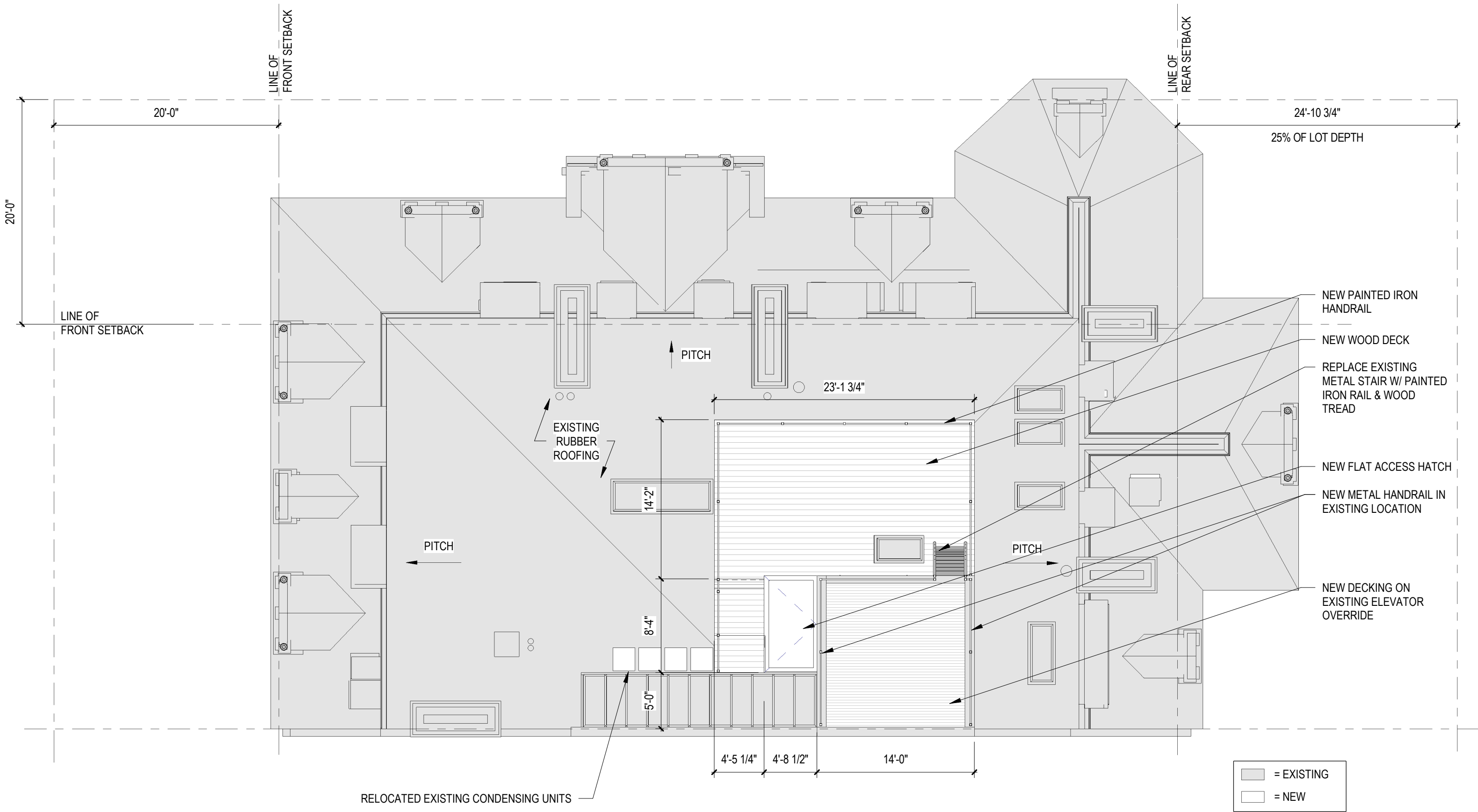
VIEW 15

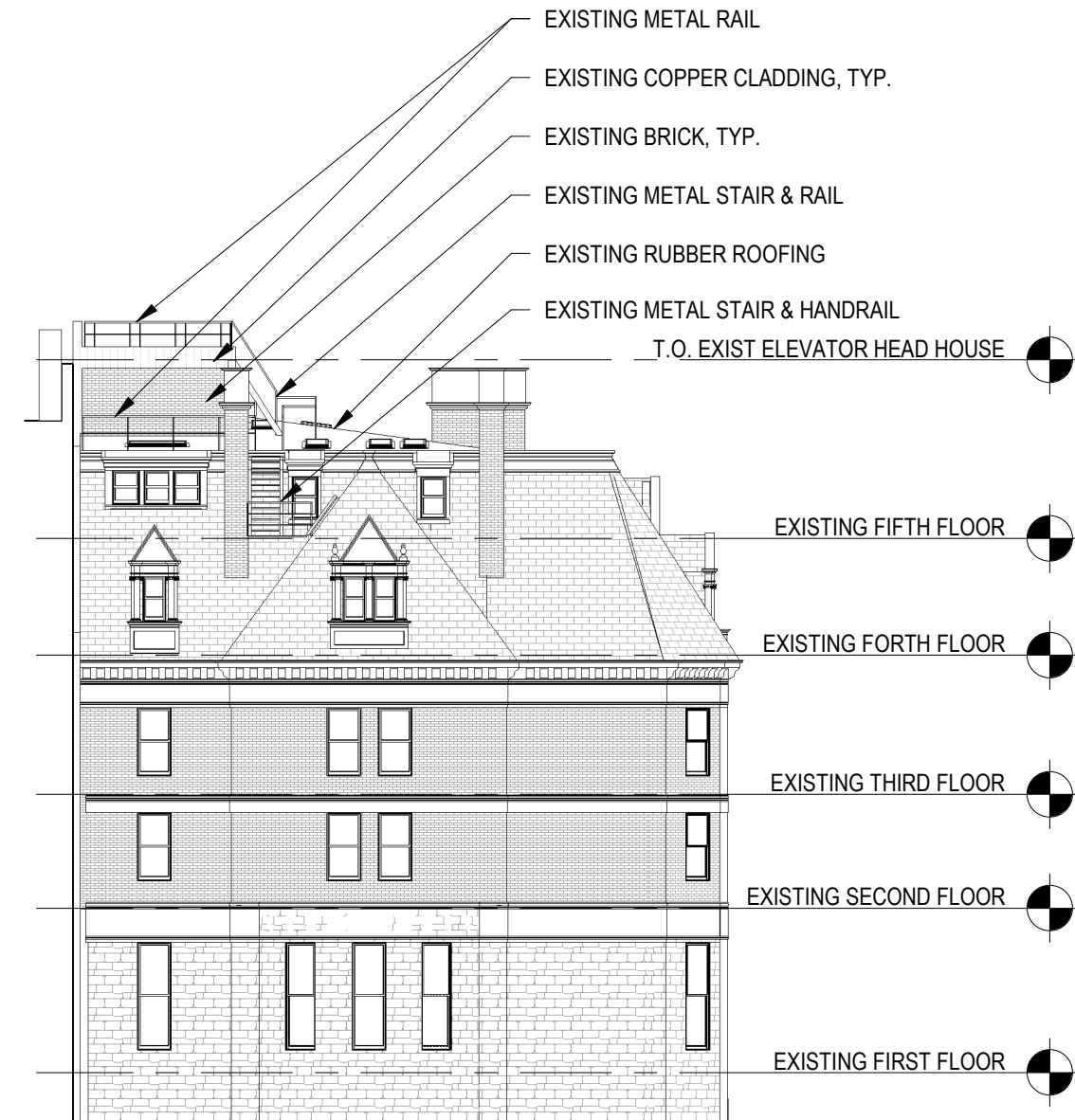
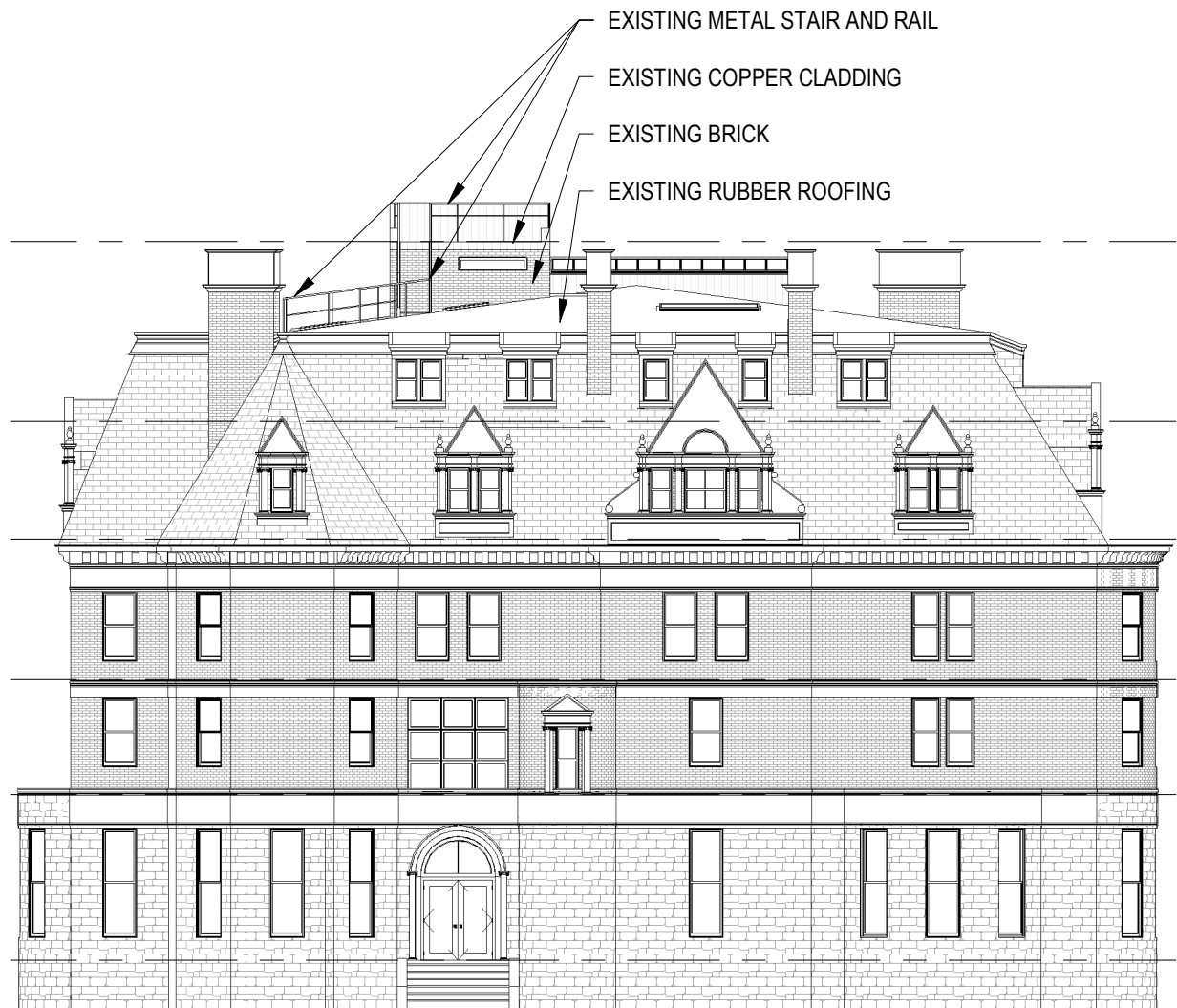
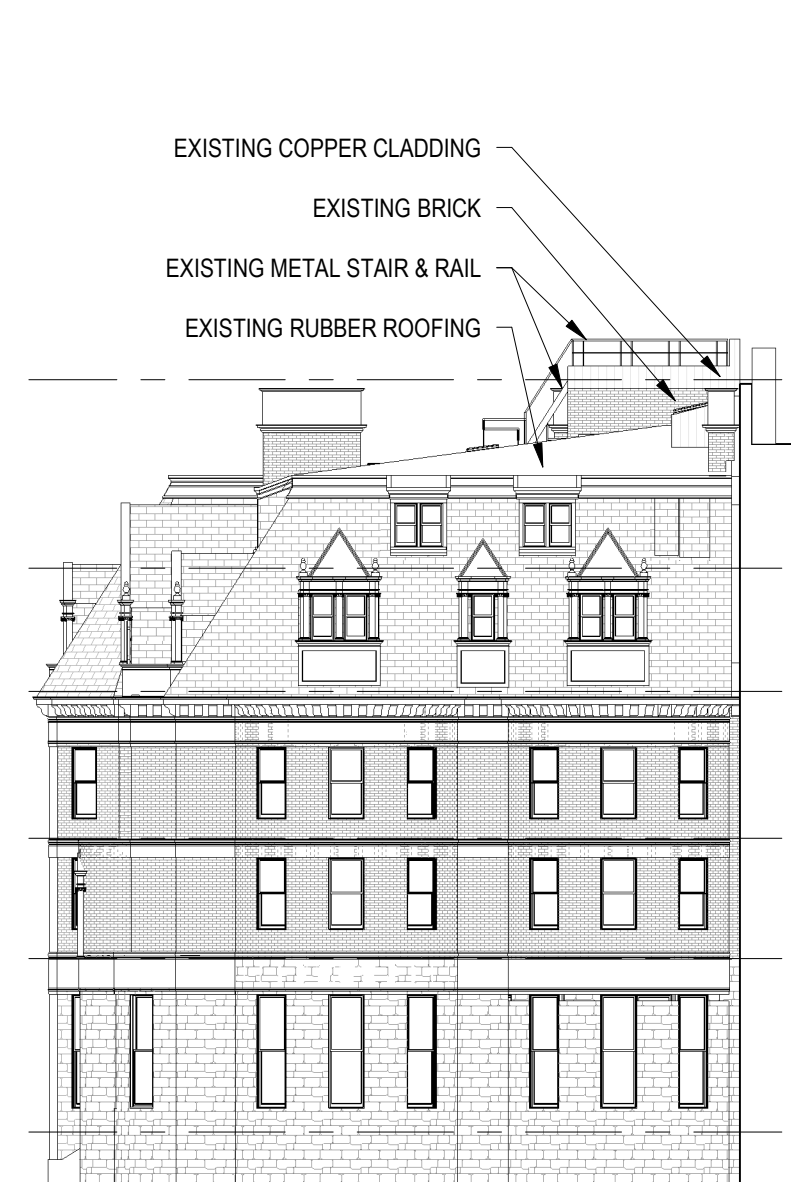










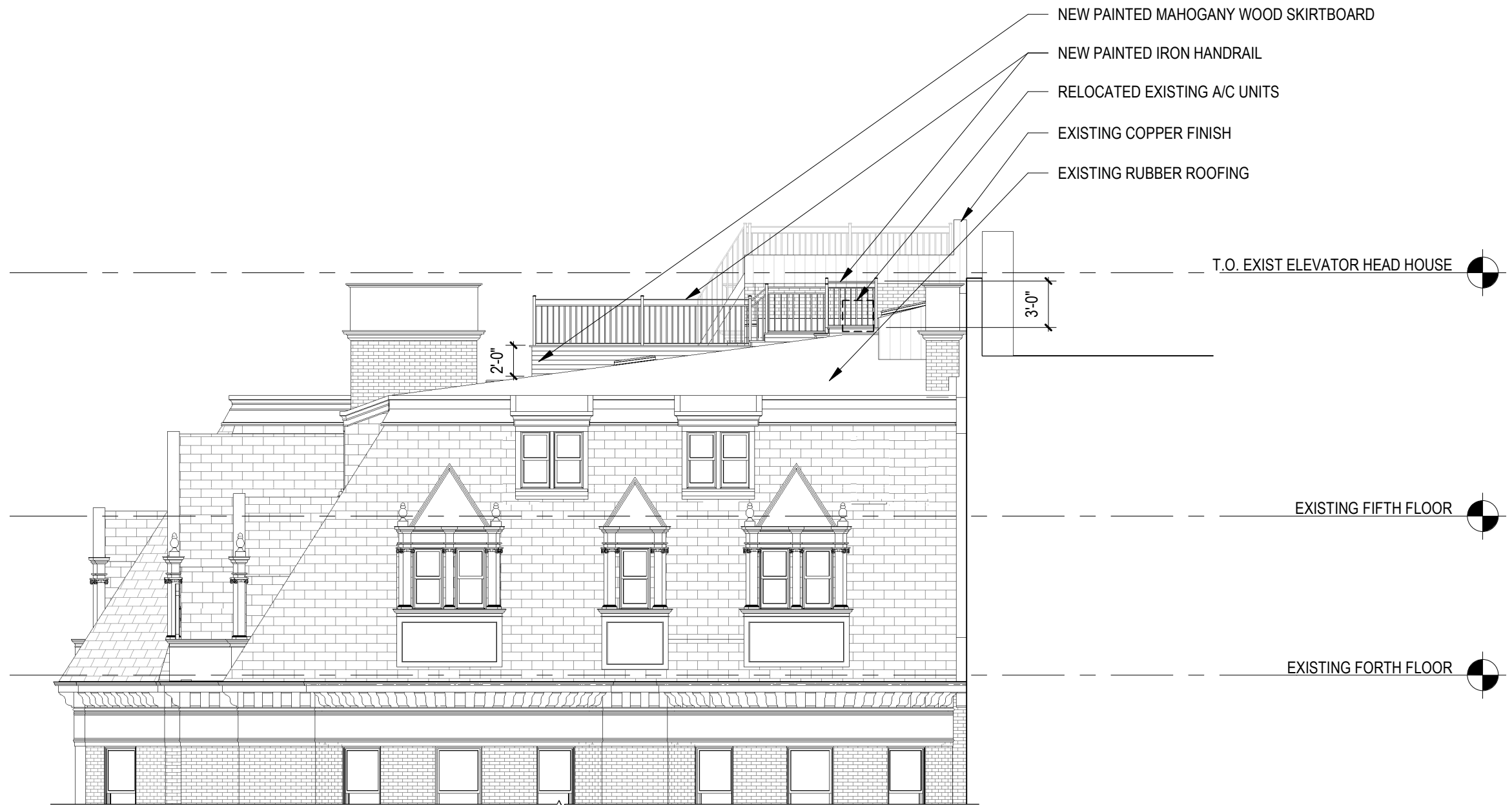


1 EXIST. COMM AVE ELEV.
SCALE: 1/16" = 1'-0"

2 EXIST. GLOUCESTER ST ELEV.
SCALE: 1/16" = 1'-0"

3 EXIST. PUBLIC ALLEY ELEV.
SCALE: 1/16" = 1'-0"

- EXISTING METAL RAIL
- EXISTING COPPER CLADDING, TYP.
- EXISTING BRICK, TYP.
- EXISTING METAL STAIR & RAIL
- EXISTING RUBBER ROOFING
- EXISTING METAL STAIR & HANDRAIL
- T.O. EXIST ELEVATOR HEAD HOUSE
- EXISTING FIFTH FLOOR
- EXISTING FORTH FLOOR
- EXISTING THIRD FLOOR
- EXISTING SECOND FLOOR
- EXISTING FIRST FLOOR



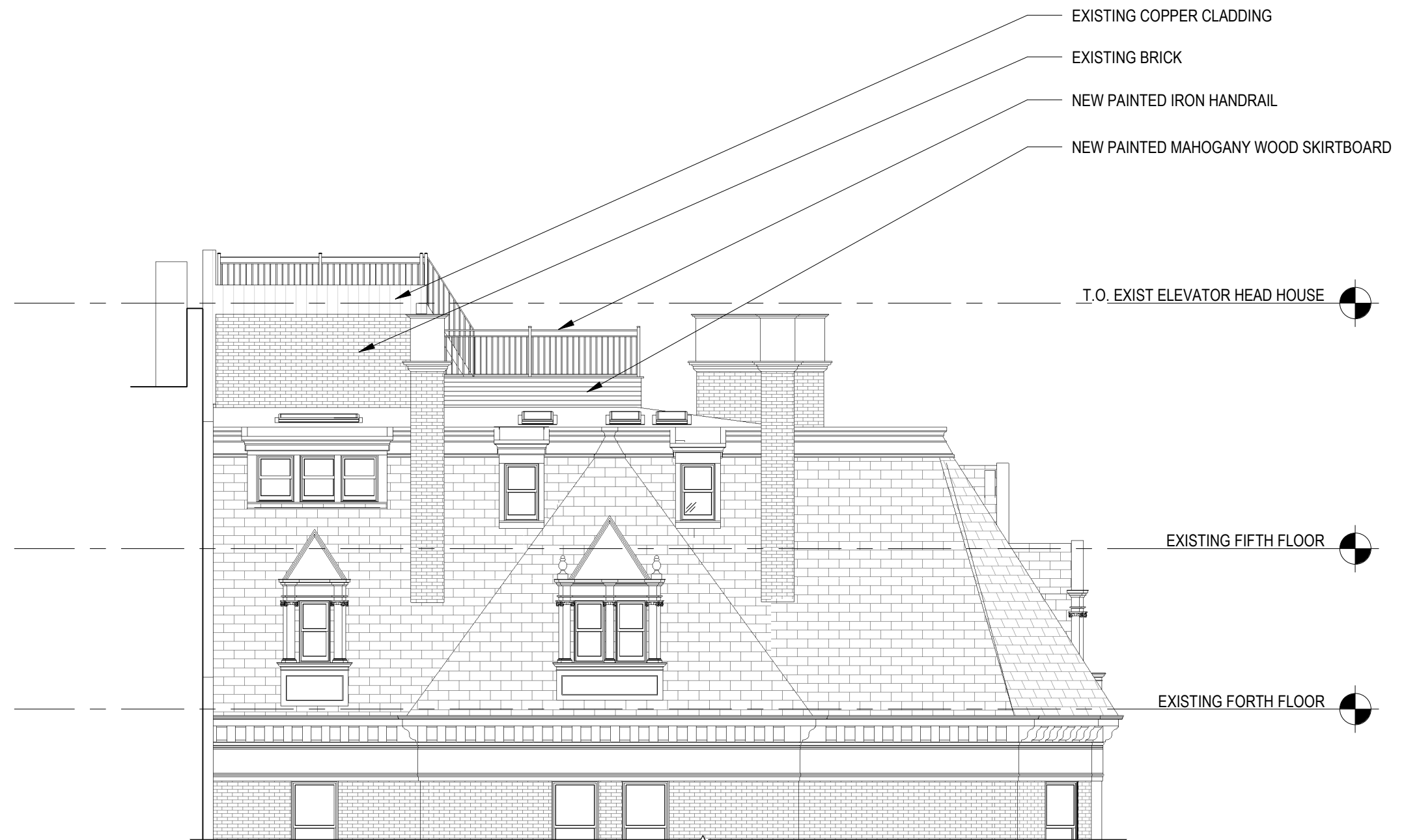


- NEW PAINTED IRON HANDRAIL
- REPLACE EXISTING METAL STAIR IN PAINTED IRON RAIL & WOOD TREADS
- NEW PAINTED IRON HANDRAIL
- NEW PAINTED MAHOGANY WOOD SKIRTBOARD
- RELOCATED EXISTING A/C UNITS
- EXISTING RUBBER ROOFING

T.O. EXIST ELEVATOR HEAD HOUSE

EXISTING FIFTH FLOOR

EXISTING FORTH FLOOR



EXISTING COPPER CLADDING

EXISTING BRICK

NEW PAINTED IRON HANDRAIL

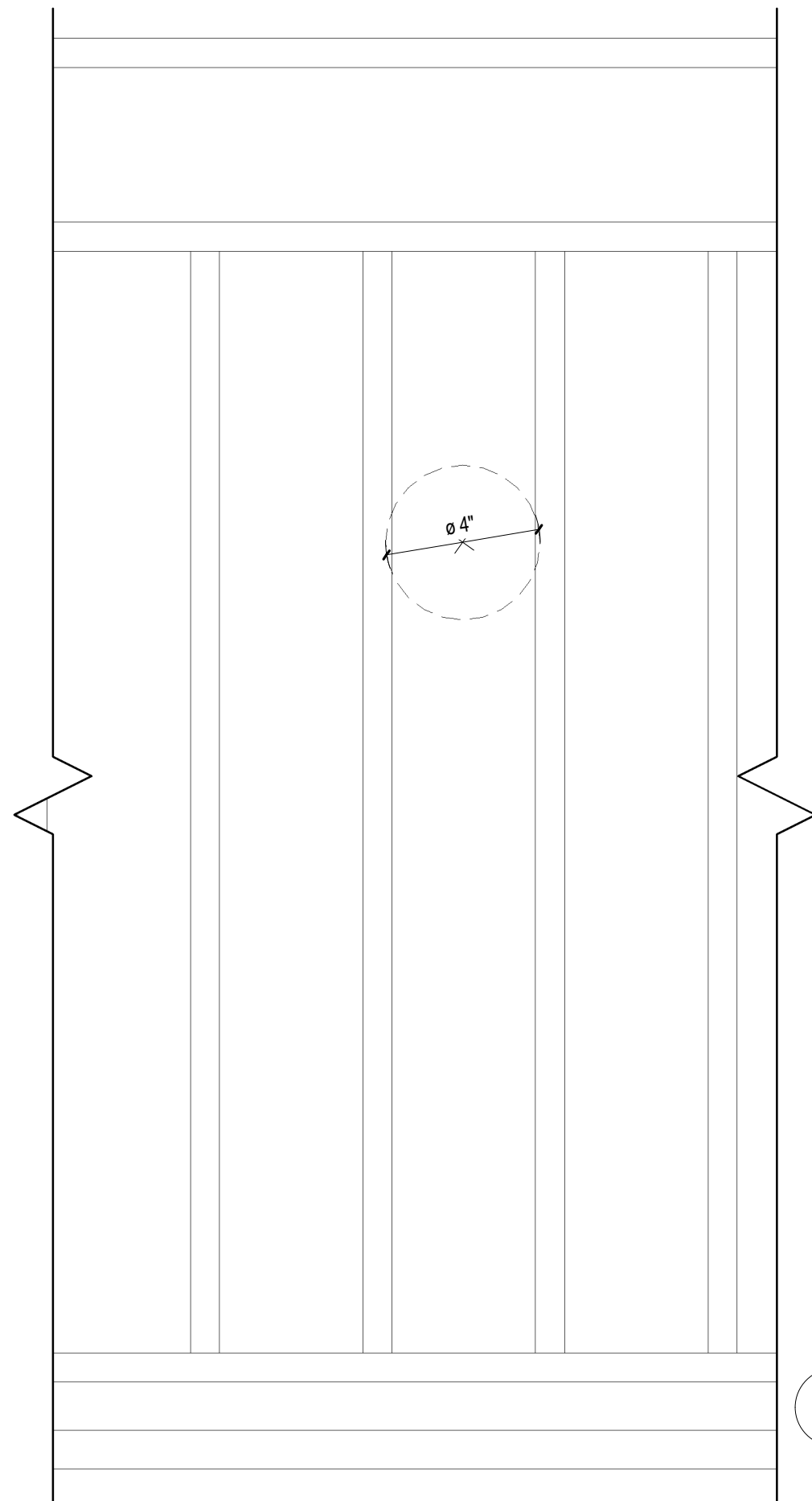
NEW PAINTED MAHOGANY WOOD SKIRTBOARD

T.O. EXIST ELEVATOR HEAD HOUSE

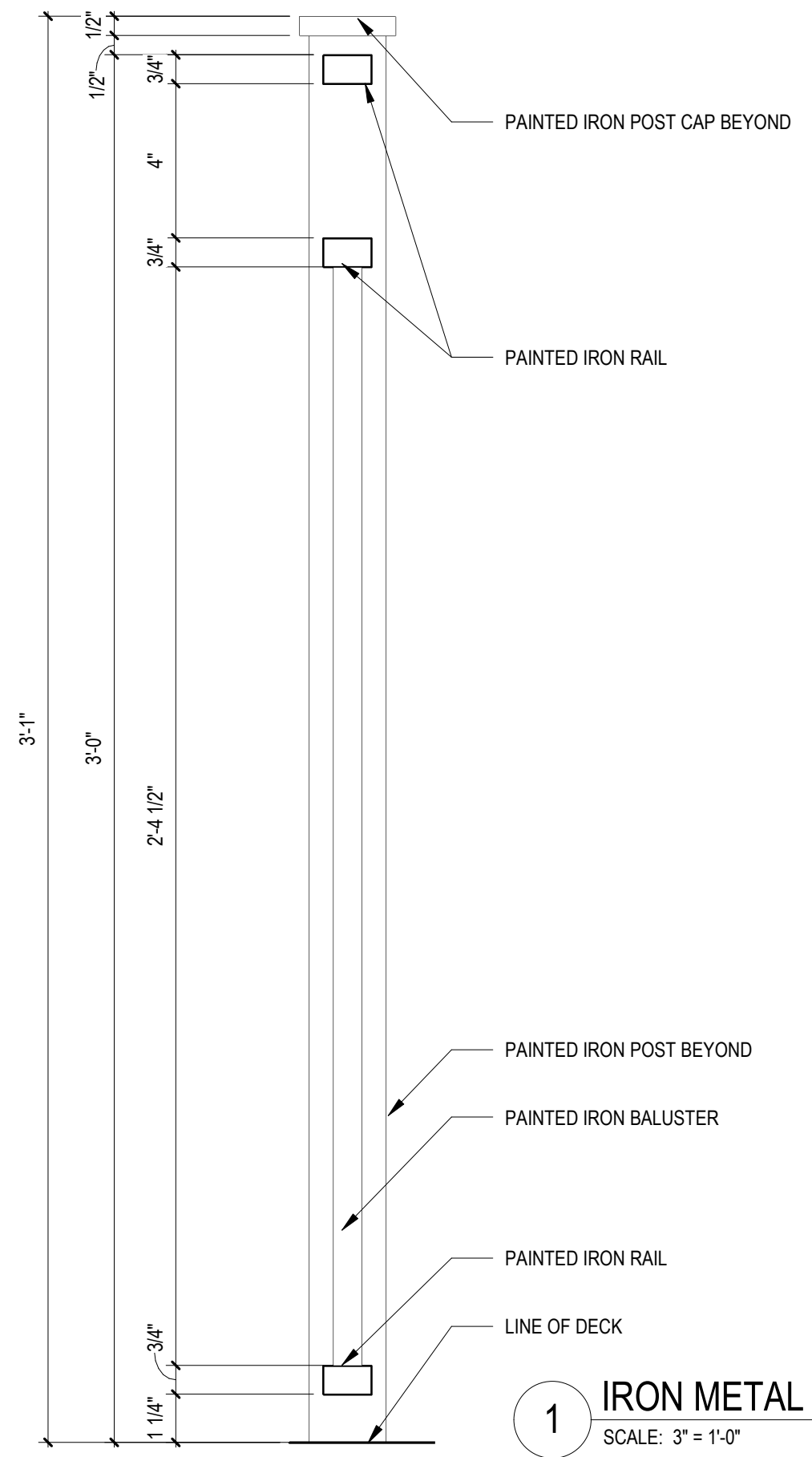
EXISTING FIFTH FLOOR

EXISTING FORTH FLOOR





2 IRON METAL RAIL ELEVATION
SCALE: 3" = 1'-0"



1 IRON METAL RAIL DETAIL
SCALE: 3" = 1'-0"



LOW PROFILE IPE DECK SYSTEM



Technical Data Sheet
**GLAZING
 VISION**

Skydoor Access Rooflight

SD-TDS-v3.0-19.09.2016

Name: GV Standard Skydoor
Code: 406
Type: Electrically hinged access rooflight
Description: Glazed 90° access and ventilation rooflight for flat roof applications

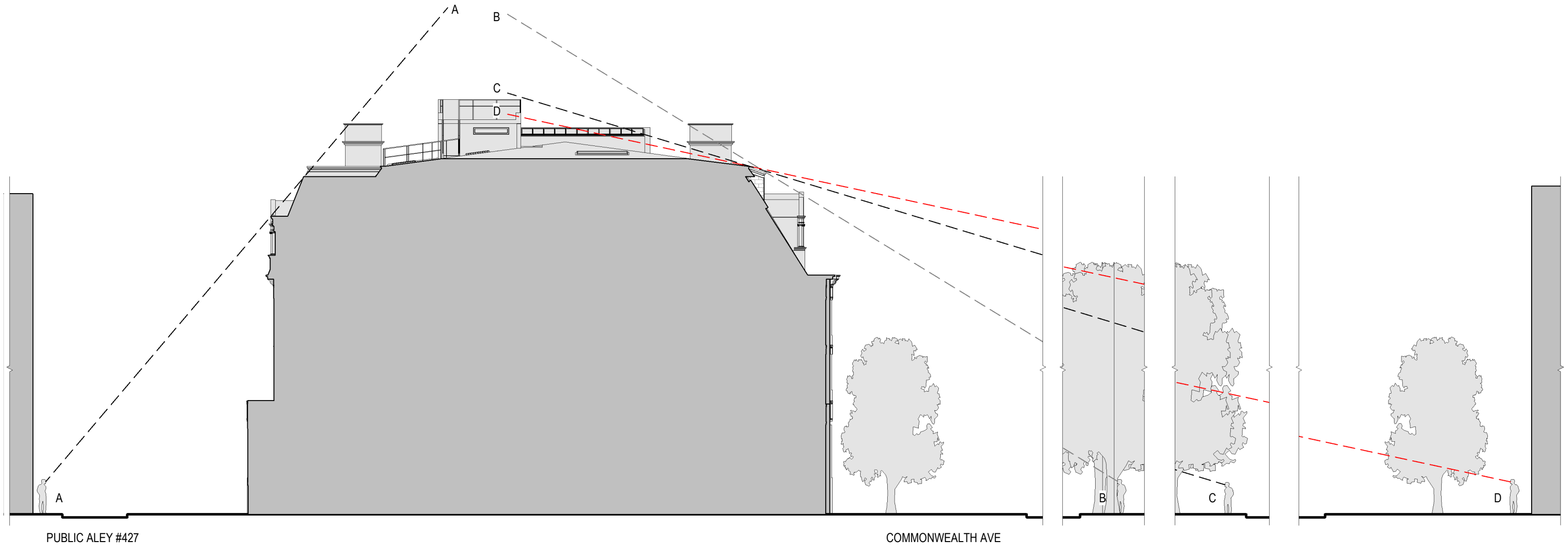
Features:
 Robust low power opening actuators, control electronics, power supply and supporting documentation. Compatible with the Glazing Vision LED control switch.
 No visible kerb fixings through the use of the external clip on cover.
 Can be used day to day to provide ventilation and access opening to a maximum of 87°. Anti-slip tread plate design incorporated into threshold monitored by safety sensors to stop the rooflight should something be in the way. The Skydoor will respond to both one touch and press & hold requests.
 The Skydoor is powered by an internal 24V power supply. A battery backed supply option is available as an external optional extra.
 The intelligent actuators ensure a synchronised operation between the two mechanisms which also include overload cut-off.
 The base and lid are thermally broken aluminium. Overall the rooflight offers excellent thermal performance.

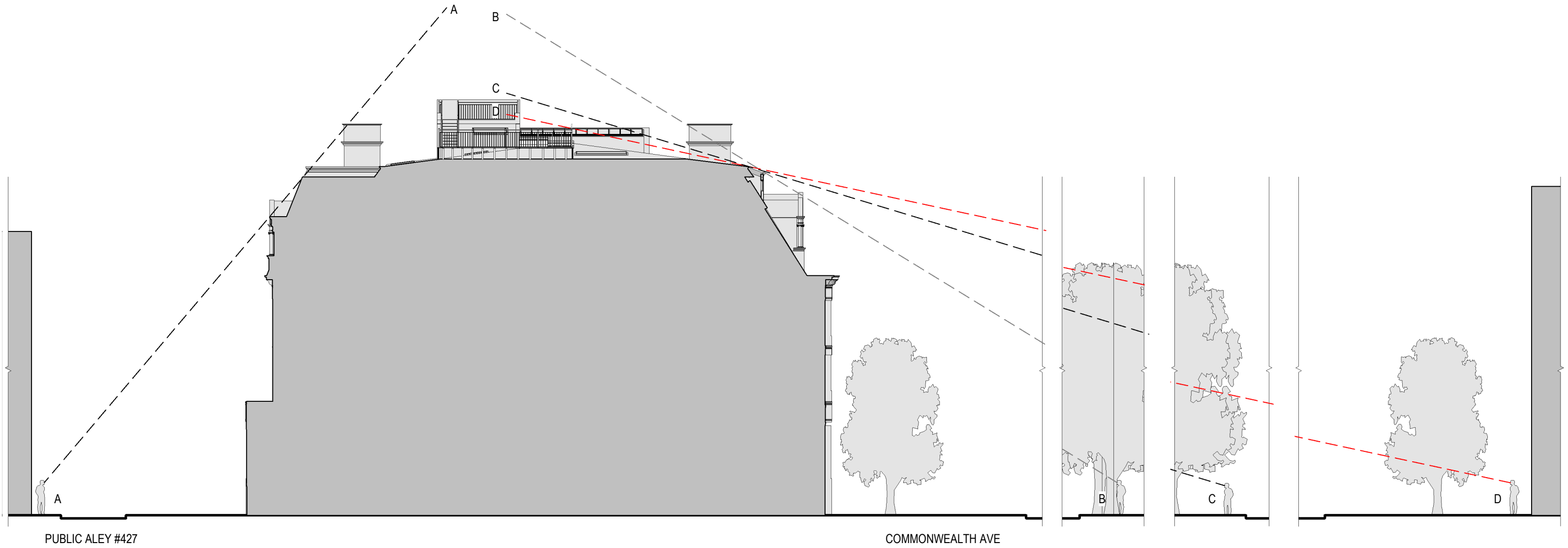
Kerb Dimensions:	Min Kerb Thickness:	200mm	Min Kerb Height:	150mm
	Min Span:	1000mm	Max Span:	Variable
	Min Width:	1300mm	Max Width:	Variable
	Min Pitch:	3°	Max Pitch:	10°

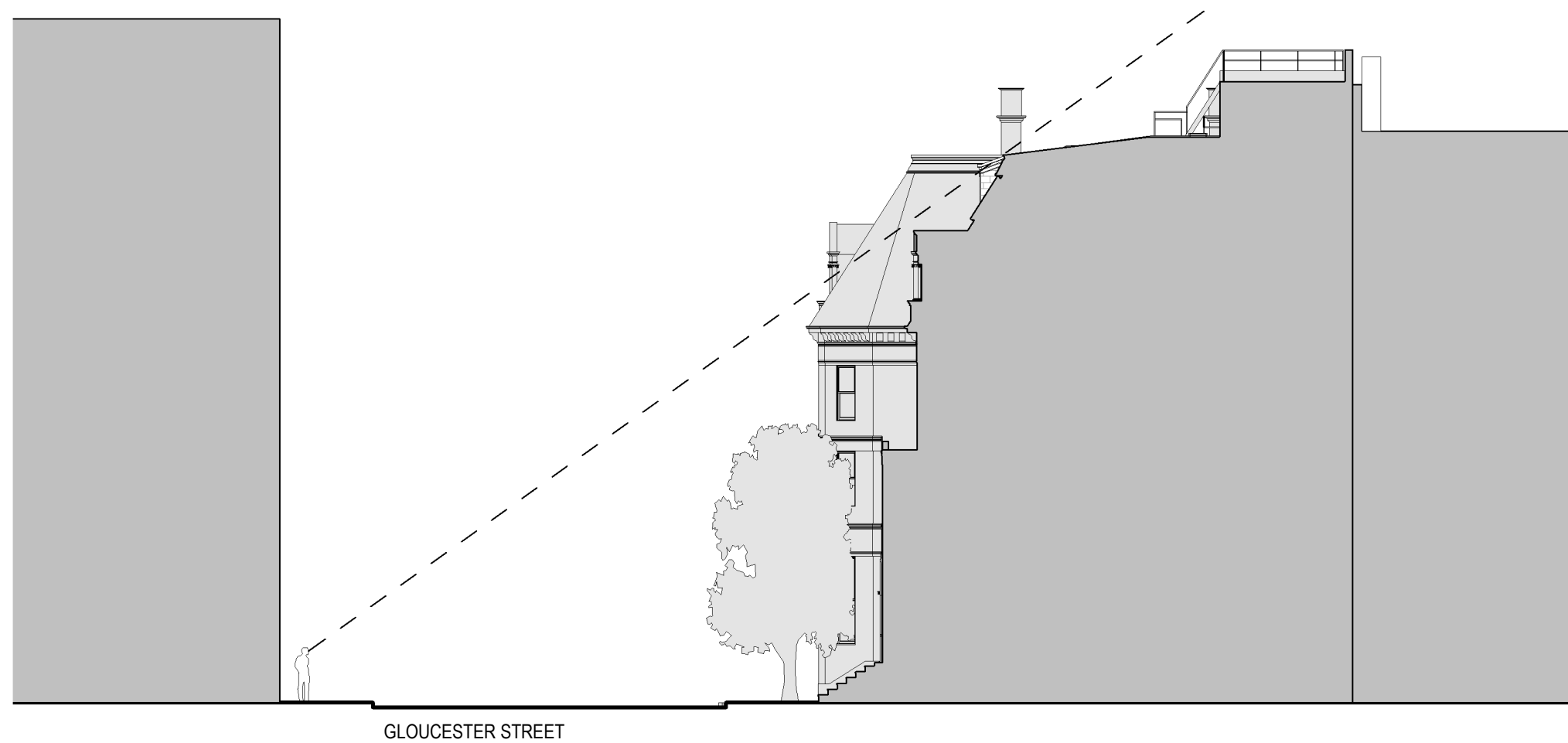
Maximum Span and Width is determined by the opposing dimension - check with manufacturer prior to specification that your dimensions are acceptable.

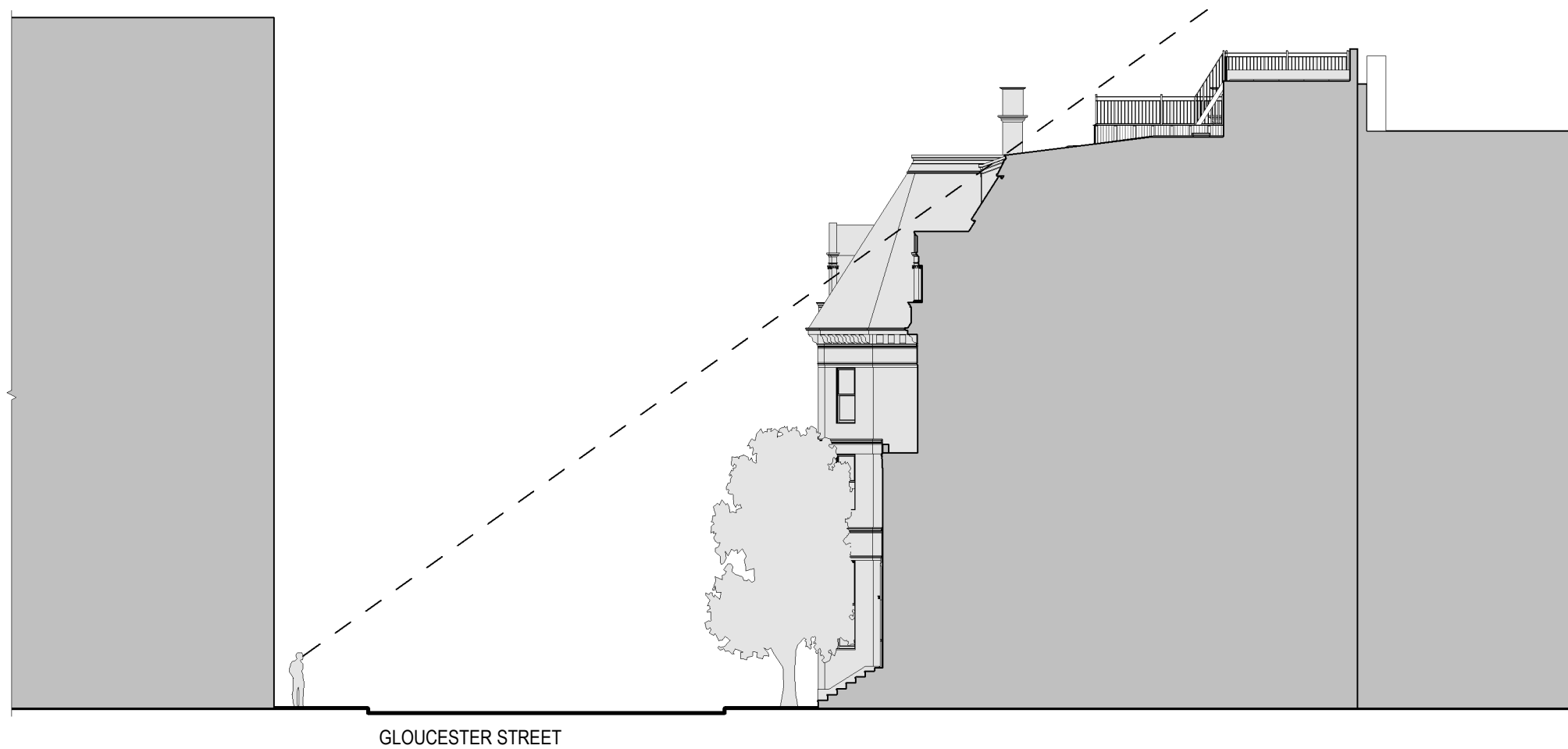
Further information on critical kerb dimensions is available on drawing reference 406-ASS-405.

ACCESS HATCH











1 EXISTING FROM MALL @ COMM
AVE WEST
SCALE:



2 PROPOSED FROM MALL @
COMM AVE WEST
SCALE:



1 EXISTING FROM GLOUCESTER
@ PUBLIC ALLEY
SCALE:



2 PROPOSED FROM GLOUCESTER
@ PUBLIC ALLEY
SCALE:



1 EXISTING FROM PUBLIC ALLEY
SCALE:



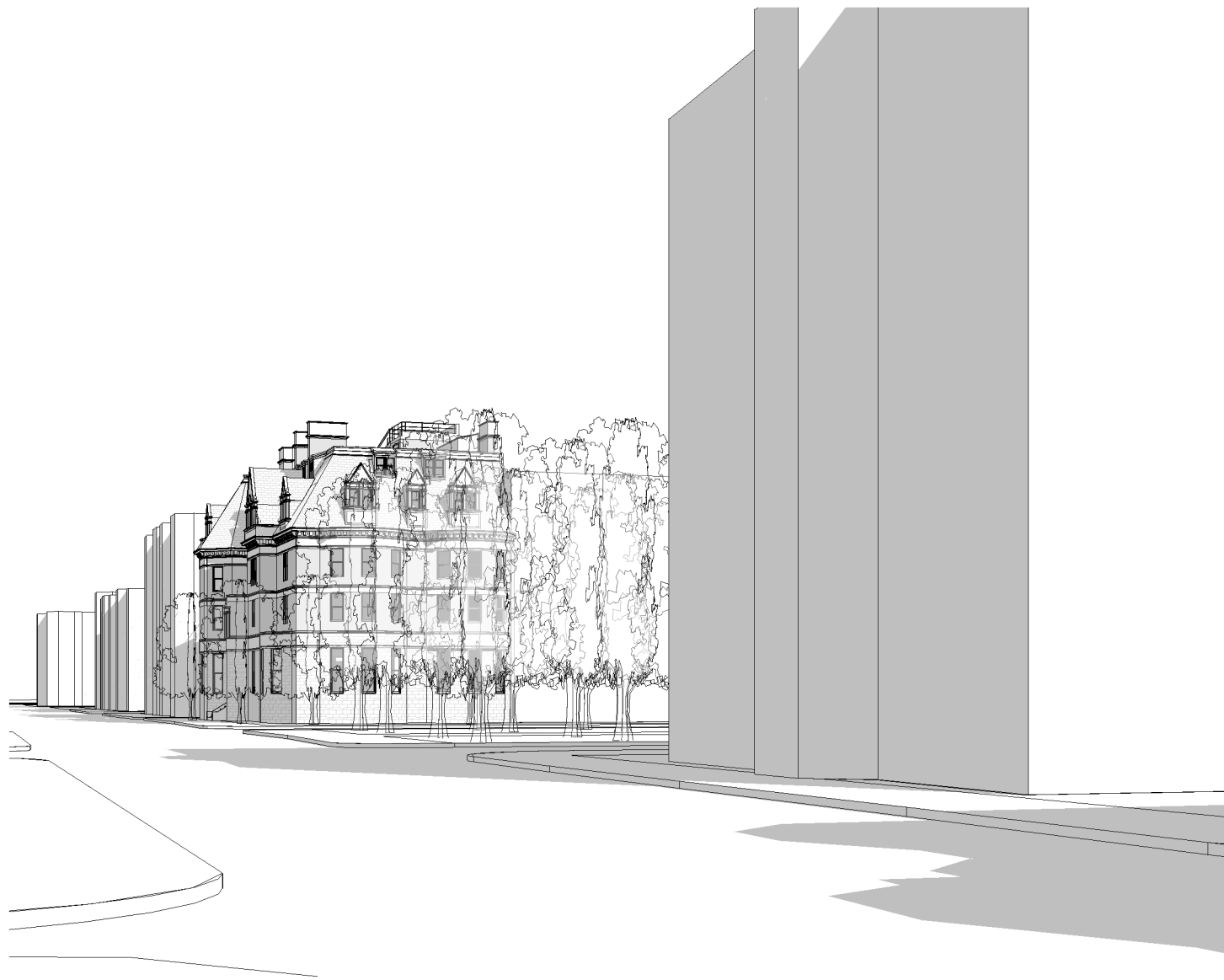
2 PROPOSED FROM PUBLIC ALLEY
SCALE:



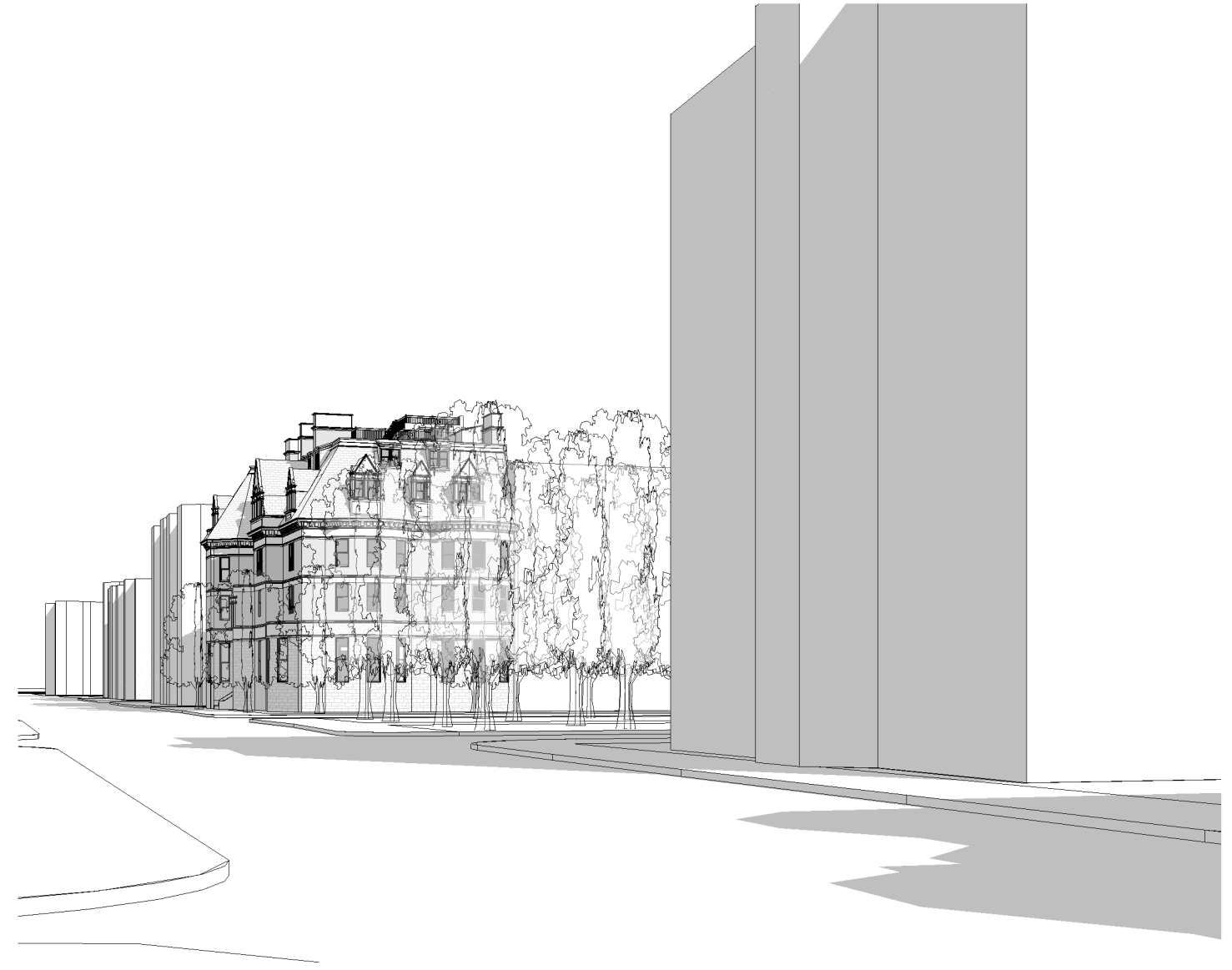
1 EXISTING FROM COMM AVE
SCALE:



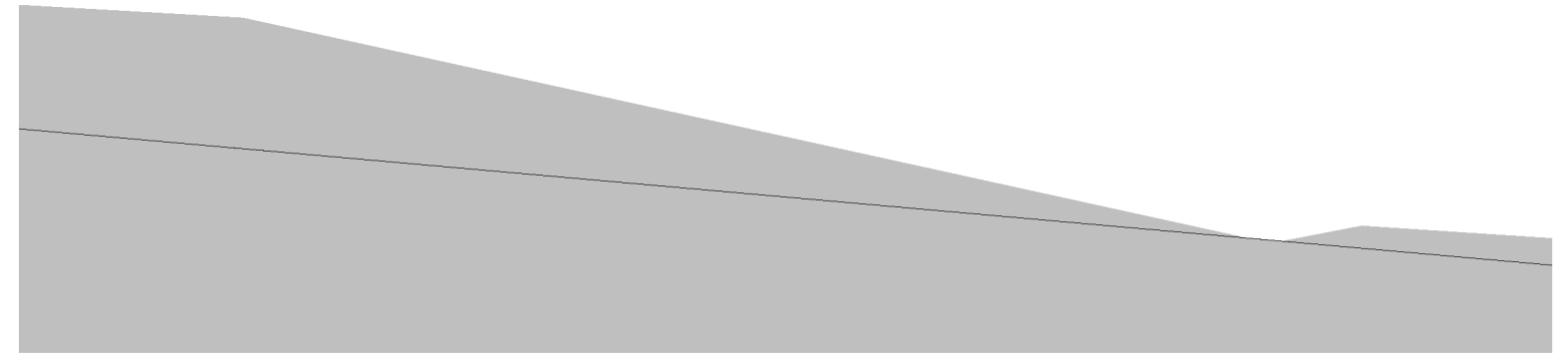
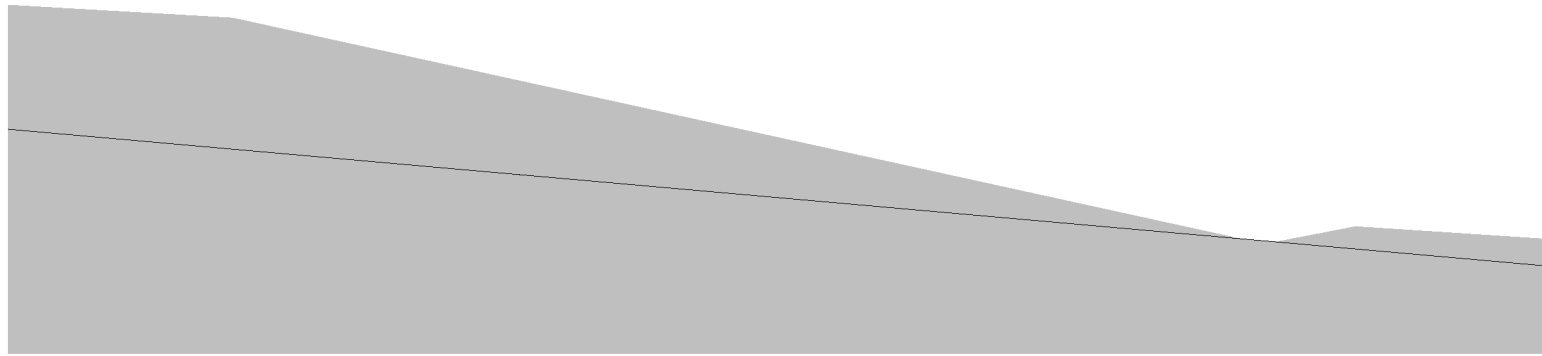
2 PROPOSED FROM COMM AVE
SCALE:



1 EXISTING FROM GLOUCESTER
EAST
SCALE:



2 EXISTING FROM GLOUCESTER
EAST
SCALE:



1 EXISTING FROM COMM AVE
SCALE:

2 PROPOSED FROM COMM AVE
SCALE:



1 EXISTING FROM PUBLIC ALLEY
SCALE:



2 PROPOSED FROM PUBLIC ALLEY
SCALE:



VIEW 16



VIEW 13



VIEW 12



VIEW 14



VIEW 11



VIEW 15



VIEW 10



VIEW 9