

An aerial photograph of Boston, Massachusetts, showing the city skyline, the harbor, and the surrounding water. The image is overlaid with a blue gradient. The word "IMAGINE" is written in large, white, dotted letters at the top left, and "BOSTON 2030" is written in white, solid letters below it. At the bottom left, the text "Waterfront Assessment & Vision" is written in white, solid letters.

# IMAGINE

## BOSTON 2030

Waterfront Assessment & Vision

# Imagine Boston 2030 Waterfront Overview

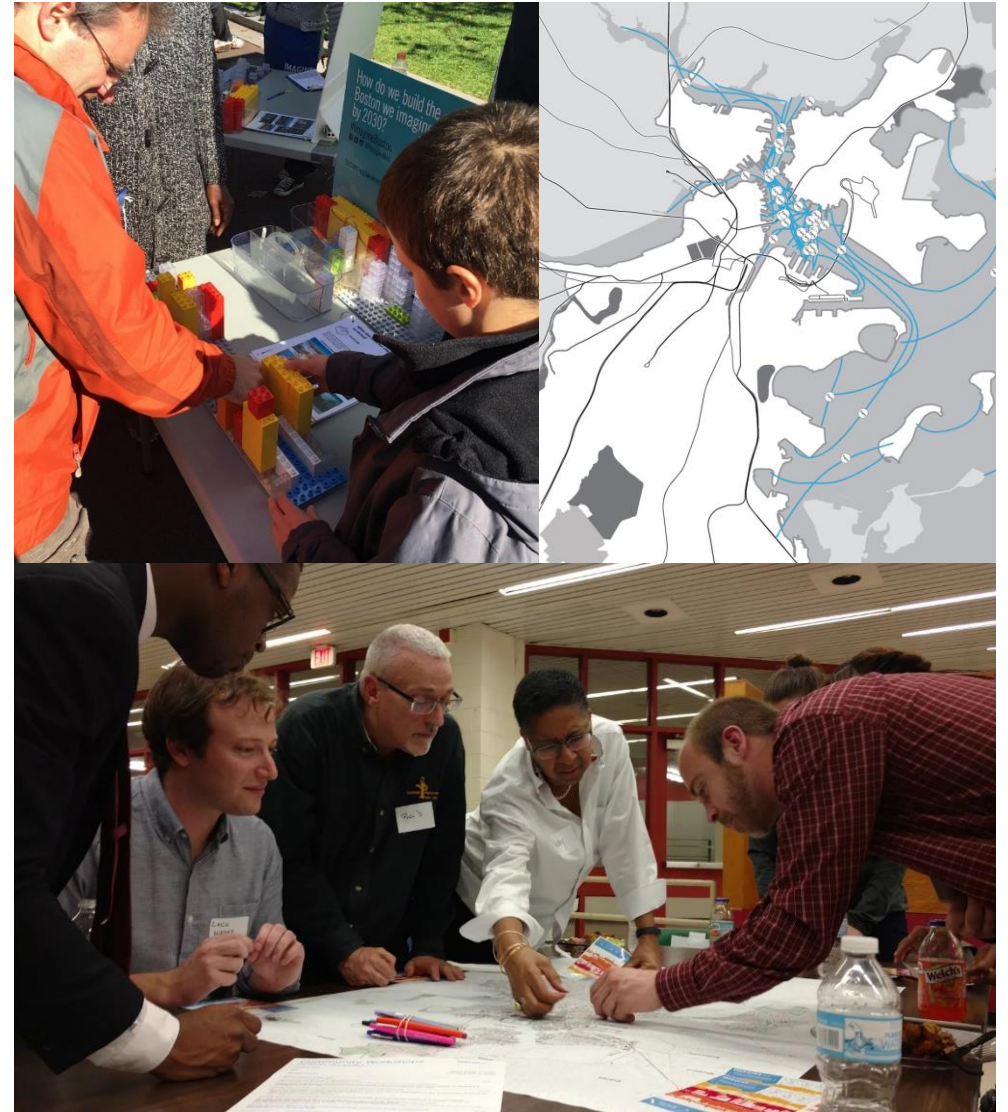
- Over 1,700 people participated in waterfront visioning through Imagine Boston 2030's community engagement
- These identified priorities coalesced into a Waterfront Vision and Guiding Principles
- Nine citywide opportunities can help move forward this vision and principles
- Key components of this vision are manifest in five geographic planning areas
- Together these can help ensure a vibrant waterfront for future generations



# Imagine Boston 2030 Community Engagement

Over 1,700 people participated in the waterfront visioning:

- Over 1,400 people used building blocks to envision Boston's future waterfront evolution
- Over 50 groups across 8 community workshops marked up maps with potential water transportation routes, Bostonians added pins and call-outs via an online mapping tool, and sent text messages with their vision of the waterfront
- More than 230 people submitted postcard comments on waterfront priorities



# Imagine Boston 2030 Community Workshops

Map shows compilation of ferry routes suggested by more than 50 groups at 8 community workshops. Comments included:

- Expanded harbor ferry service to connect East Boston, Charlestown, Downtown, and the Seaport
- New ferry or water taxi service in the Charles River, Mystic River, Fort Point Channel, and Chelsea Creek

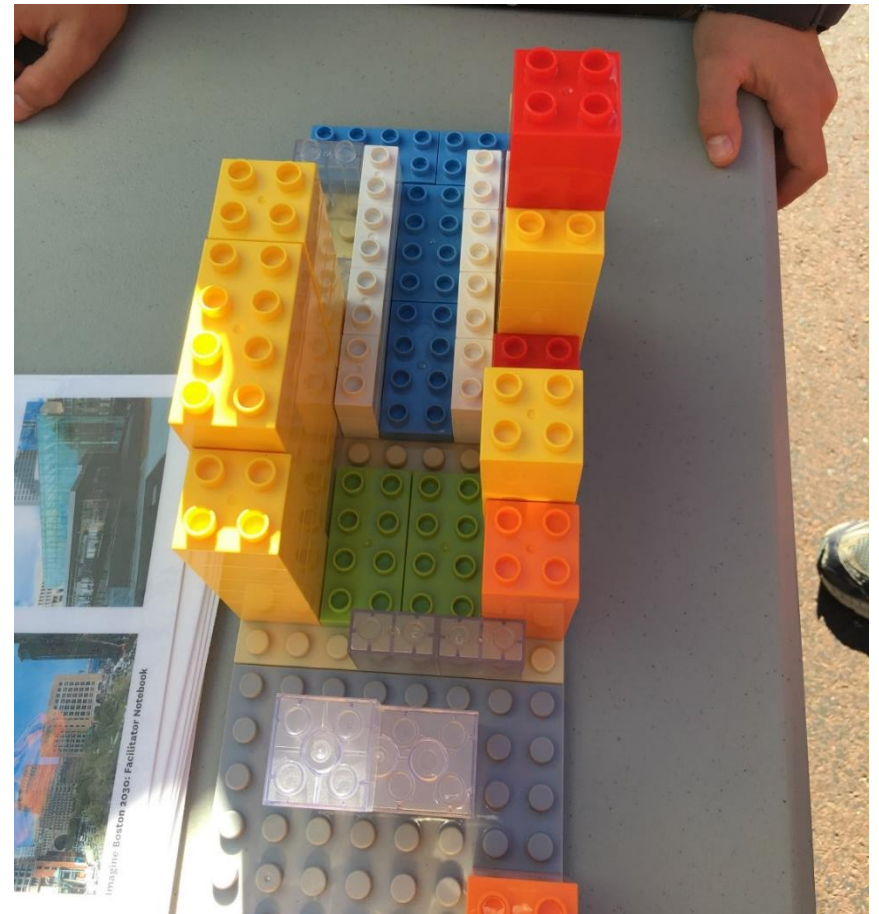


# Imagine Boston 2030 Street Engagement Team

Build the Boston you imagine by 2030!



A Canal!

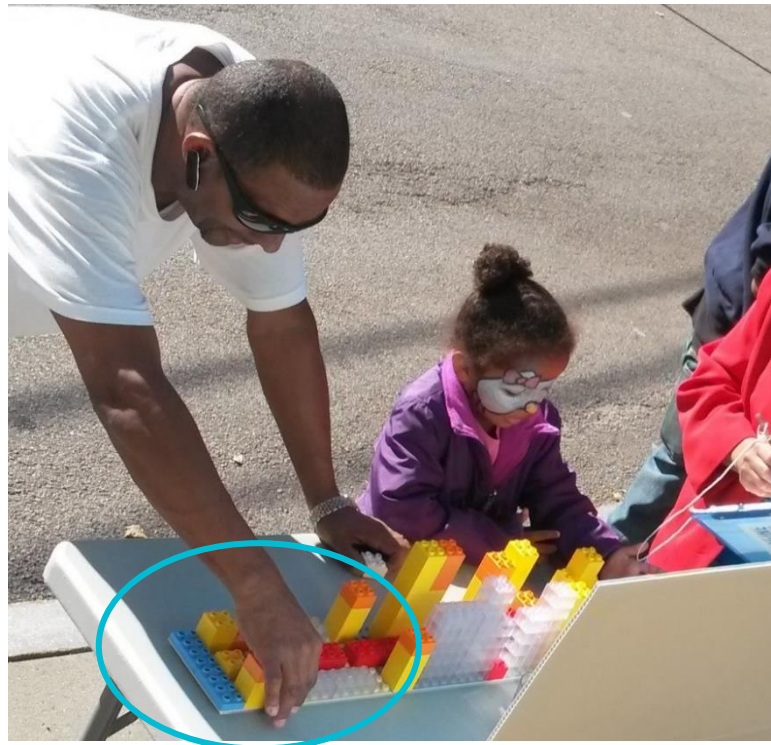


# Imagine Boston 2030 Street Engagement Team

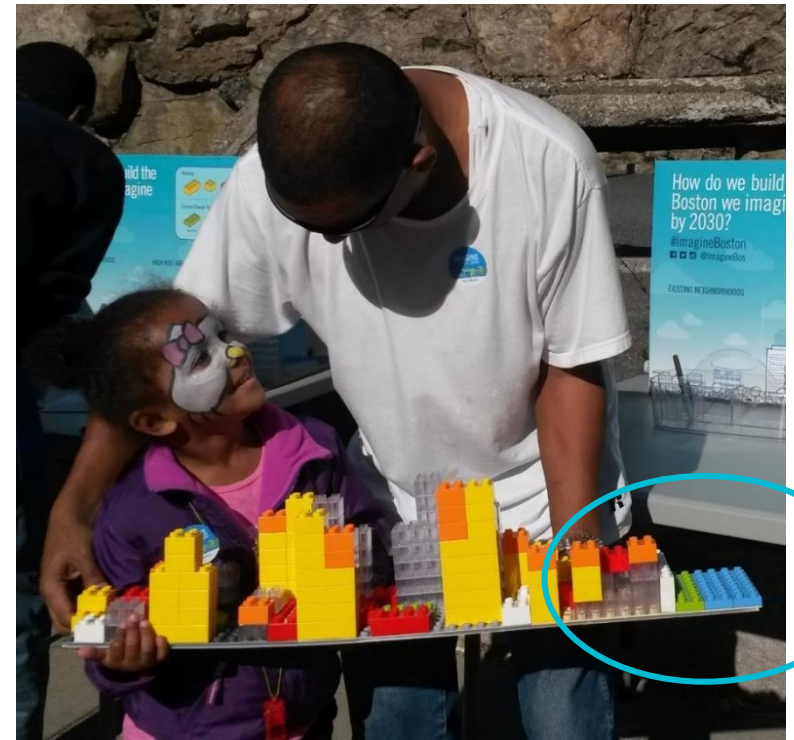
Build the Boston you imagine by 2030!

*One family's take...*

Before sea level rise: buildings right up to the waterfront... After sea level rise: park and sea wall protecting those buildings!



*...many different suggestions*



# Imagine Boston 2030 Postcards with Feedback on Possible Waterfront Initiatives

Waterfront City

Imagine if we could transform Boston's harbor and riverfronts into the most exciting parts of the city.

Rate this idea!  
☆☆☆☆☆

I would be excited about a waterfront that has...  
(Check all that appeal to you)

- Ferry service across and around the harbor
- Easy access from all neighborhoods
- Opportunities for kayaking, swimming, and boating
- A connected Harborwalk
- New signature waterfront parks
- Public art, cultural institutions, festivals, markets, and other programming

How would you make this idea better?

Think about possibly water transportation to people in the East Boston Winthrop Area to the city to avoid traffic

Where do you live? (Zip code)  
02121

Waterfront City

*\*already too subject to climate change*

Imagine if we could transform Boston's harbor and riverfronts into the most exciting parts of the city.

Rate this idea!  
☆☆☆☆☆

*a really overinvested*

I would be excited about a waterfront that has...  
(Check all that appeal to you)

- Ferry service across and around the harbor
- Easy access from all neighborhoods
- Opportunities for kayaking, swimming, and boating
- A connected Harborwalk
- New signature waterfront parks ?
- Public art, cultural institutions, festivals, markets, and other programming

How would you make this idea better?

*activate/reconnect DOT waterfront*

*include Napa + river in transit options*

Where do you live? (Zip code)  
02124

*\*DOT waterfront is a geographic concept Not a place. Disconnected from neighborhoods + each other.*

# Imagine Boston 2030 Waterfront Vision

These priorities coalesced into a Waterfront Vision and Guiding Principles:

*In the face of growing climate-related risks and changing economic realities, Boston envisions...*

## **A Resilient Waterfront**

- A climate ready waterfront prepares Boston for climate-related risks, particularly coastal and riverine flooding.
- An environmentally sound waterfront improves water quality and strengthens habitats.

## **A Waterfront for All**

- An inclusive waterfront provides economic opportunities for people at a variety of income and skill levels.
- An activated waterfront is anchored by varied types of open spaces, featuring cultural resources and year-round programming and connecting people with the natural, cultural, and economic history of the region.
- An accessible waterfront is a public destination that can be reached and crossed by all residents and functions as a seamless link in the city's and the region's transportation network.

## **A Waterfront with Strong Stewardship**

- A financially sustainable waterfront has adequate funding and operational plans;
- A collaborative waterfront is planned with broad and open public discussion and through partnership with relevant jurisdictions.



# Imagine Boston 2030 Waterfront Principles

## A Resilient Waterfront:

- Climate-ready
  - District-scale planning and flood risk reduction
  - Plan for future climate conditions
  - Public realm and climate-first strategy for area redevelopment
- Environmentally sound
  - Habitat enhancement
  - Green and gray infrastructural systems

# Imagine Boston 2030 Waterfront Principles

## A Waterfront for All:

- Inclusive
  - Appropriate preservation
  - Incorporation of new uses
  - Accessibility for people of a variety of incomes
- Accessible
  - True public access
  - Connected to neighborhoods
  - Activating the watershed for transportation
- Activated
  - Open space quality, diversity, and programming
  - Open space aggregation
  - Cultural uses and activation
  - Activating the watershed for recreation

# Imagine Boston 2030 Waterfront Principles

## A Waterfront with Strong Stewardship:

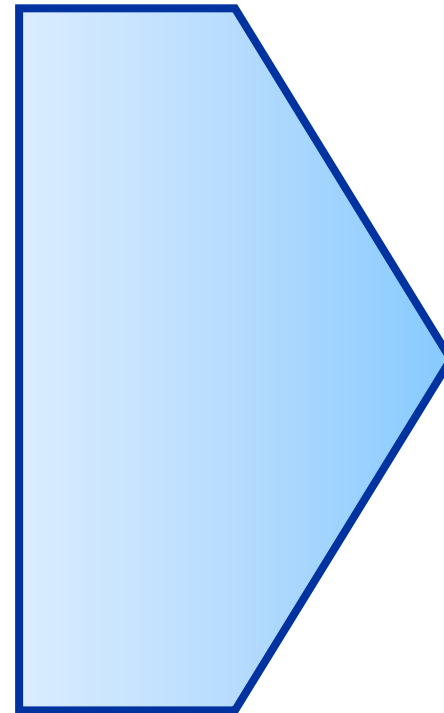
- Financially sustainable
  - Organization mechanisms to support long-term financial sustainability
  - Aggregation of facilities of public accommodation
  - Public sector initiative
  - Leveraging of development value through predictable entitlements
  - Zoning to create value and public benefit
- Collaborative
  - Regional planning and coordination

# Imagine Boston 2030 Waterfront Citywide Opportunities

The vision and principles of Imagine Boston 2030's Waterfront can be realized through nine often overlapping opportunities, such as:

## Opportunities:

1. Create signature new open spaces that leverage underutilized waterfront sites
2. Form networks of connected open spaces and cultural destinations
3. Grow the diversity of experiences along stretches of the waterfront
4. Expand connections between neighborhoods and the waterfront
5. Strengthen and expand waterfront housing and job centers
6. Develop local climate resilience plans to prepare existing and expanded neighborhoods
7. Create flood protection systems that provide multiple benefits
8. Apply new, sustainable models for the creation and maintenance of public waterfront areas
9. Deploy proactive zoning and create a predictable entitlement process for greater public benefits



- A Resilient Waterfront: Opportunities 6 & 7
- A Waterfront for All: Opportunities 1, 2, 3, 4, & 5
- A Waterfront with Strong Stewardship: Opportunities 8 & 9

# Imagine Boston 2030 Waterfront Citywide Opportunities

## 1. Create signature new open spaces that leverage underutilized waterfront sites



Inspiration: Crissy Field, San Francisco

“How can new open spaces function as flood defense mechanisms, such as living shorelines?”

- *Citywide Waterfront Working Group Member*

“What happens with all of this open space during the winter? Open space alone doesn’t bring twelve months of activity by itself. We need active programming and events on the waterfront.”

- *Citywide Waterfront Working Group Member*

# Imagine Boston 2030 Waterfront Citywide Opportunities

## 2. Form networks of connected open spaces and cultural destinations

“What about a sea green line to connect waterfront open spaces like the Freedom Trail’s red-brick path?”

- Citywide Waterfront Working Group Member

“How awesome would it be to have a fully connected bike/walk trail (extension of the Charles River bike path) that went all the way around the waterfront of Boston? With outdoor cafes and Hubway stops along the way!

- Fenway resident via online mapping tool



Inspiration: South Bank, London

# Imagine Boston 2030 Waterfront Citywide Opportunities

## 3. Grow the diversity of experiences along stretches of the waterfront

“The City needs a greater connection to the water and more opportunities to physically touch it.”

- Citywide Waterfront Working Group Member



“There’s more to Boston’s waterfront than its role in the American Revolution and it should also be celebrated!”

- Citywide Waterfront Working Group Member

Inspiration: Baltimore Inner Harbor

# Imagine Boston 2030 Waterfront Citywide Opportunities

## 4. Expand connections between neighborhoods and the waterfront

"More signage and a unified branding of wayfinding & interpretive signs from landward crossroads to the Harborwalk and Harbor Islands should be used. Many people don't realize how close the waterfront is!"

- Citywide Waterfront Working Group Member



Inspiration: Allegheny Riverfront Park, Pittsburg

"I would like to see all of Boston's waterfronts easily accessible (not cut off by roads or developed by private entities), rejuvenated, and well-designed. The design would include ways to handle flooding and provide ways to increase water quality. Water defines this city and we should celebrate it."

- East Boston resident via web survey



# Imagine Boston 2030 Waterfront Citywide Opportunities

## 5. Strengthen and expand waterfront housing and job centers



Inspiration: Brooklyn Navy Yard

“Developments on the waterfront should include both market-rate and affordable housing, especially in East and South Boston.”

- *Citywide Waterfront Working Group Member*

“Maintain marine industrial character while adding more places to visit/eat.”

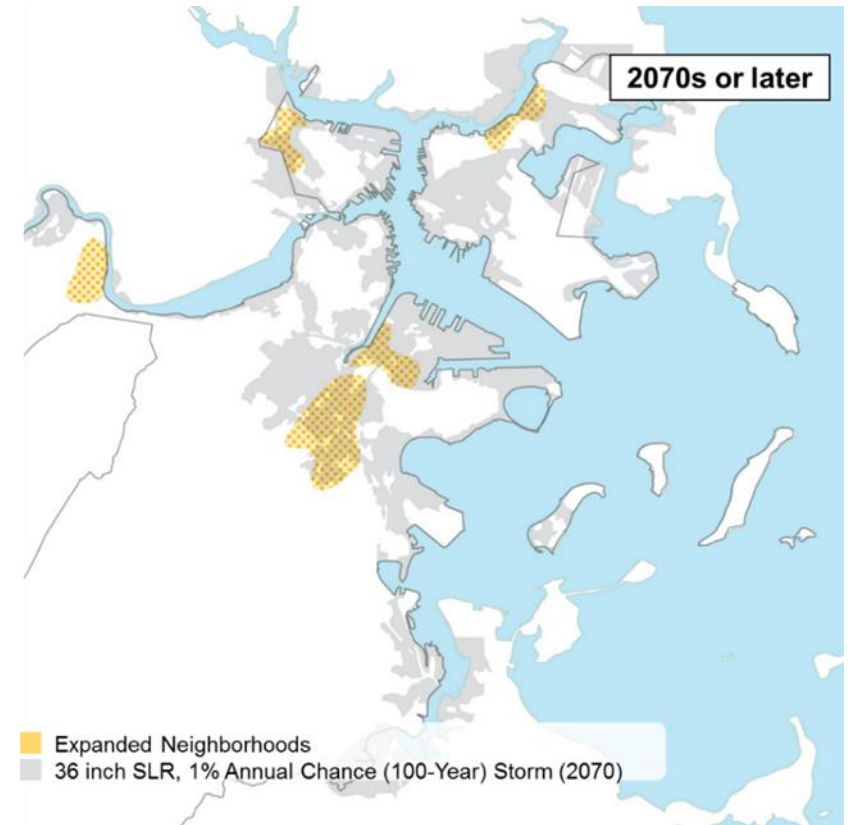
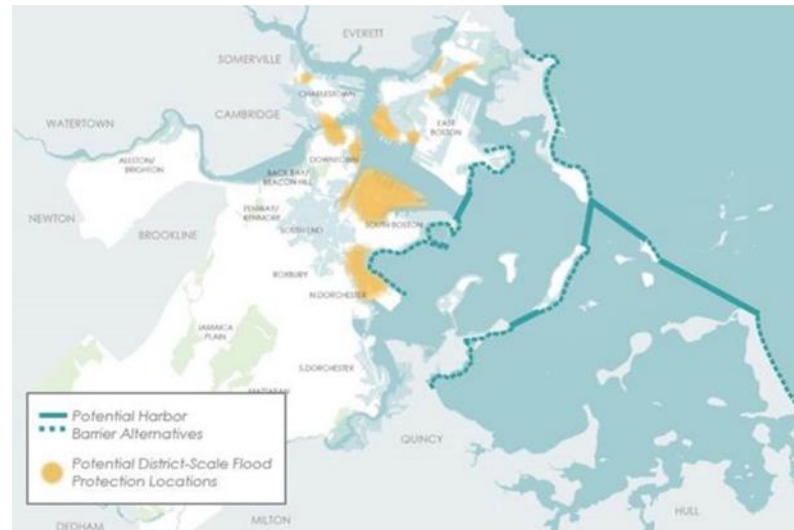
- *East Boston resident via online mapping comments*

# Imagine Boston 2030 Waterfront Citywide Opportunities

## 6. Develop local climate resilience plans to prepare existing and expanded neighborhoods

"Comprehensive guidelines to inform future development of resilient structures on the waterfront need to be developed for all sea level rise scenarios."

- Citywide Waterfront Working Group Member



Inspiration: Climate Ready Boston

# Imagine Boston 2030 Waterfront Citywide Opportunities

## 6. Develop local climate resilience plans to prepare existing and expanded neighborhoods

"Both green and gray infrastructure are necessary. Boston has existing green assets that can be enhanced to better serve as flood protection infrastructure, such as Belle Isle Marsh and Sales Creek."

- Citywide Waterfront Working Group Member

"Better prepare infrastructure for climate change-related issues."

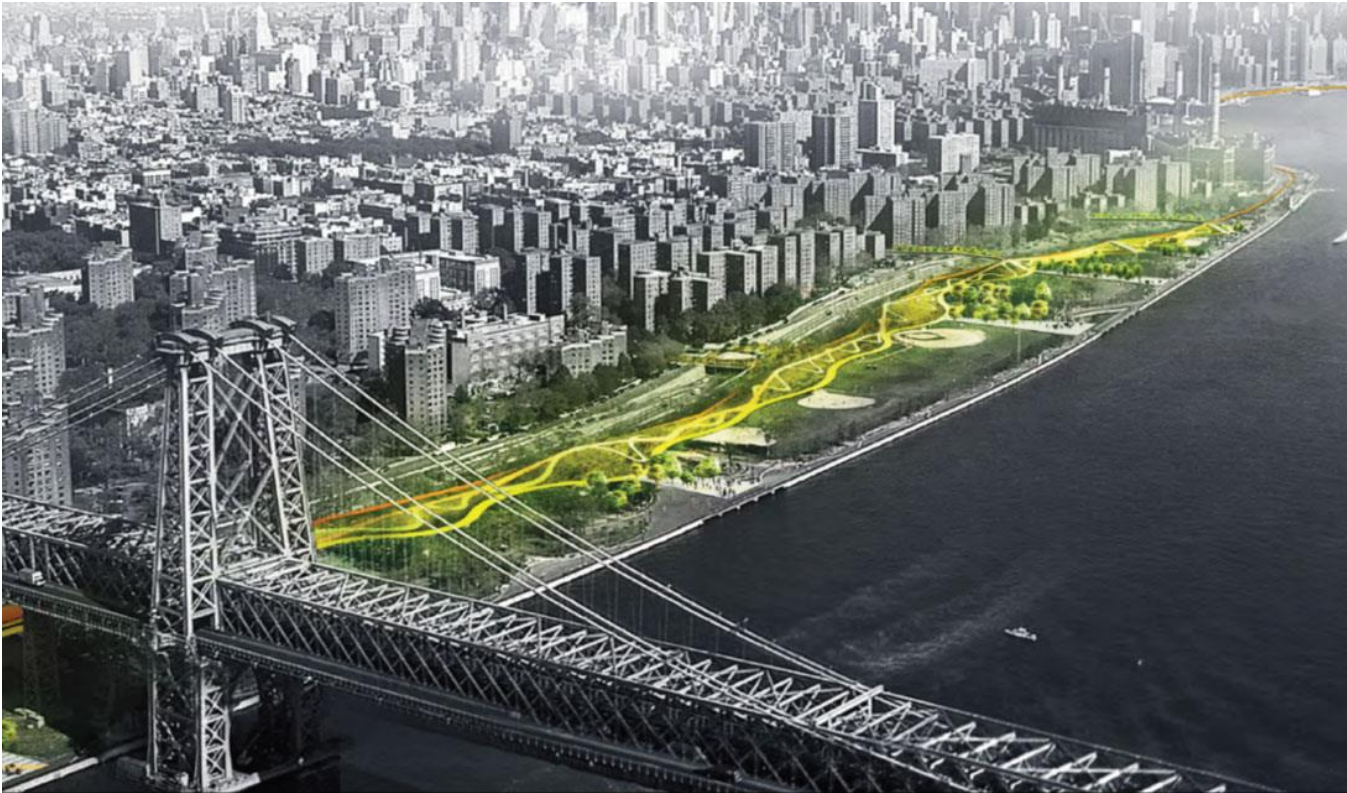
- Roxbury resident via text message



Inspiration: HafenCity, Hamburg

# Imagine Boston 2030 Waterfront Citywide Opportunities

## 7. Create flood protection systems that provide multiple benefits



“How about a ‘Dry Line,’ or signature elevated Harborwalk between North Station and Fort Point Channel that doubles as a flood defense system?”

- *Citywide Waterfront Working Group Member*

Inspiration: East Side Coastal Resiliency, NYC

# Imagine Boston 2030 Waterfront Citywide Opportunities

8. Apply new, sustainable models for the creation and maintenance of public waterfront areas

"We should be careful to avoid using regressive taxes to fund public spaces."

- *Citywide Waterfront Working Group Member*



Inspiration: Hudson River Park, NYC

# Imagine Boston 2030 Waterfront Citywide Opportunities

9. Deploy proactive zoning and create predictable entitlement process for greater public benefits

"A vision is the 'what;' zoning is the 'how.'"

- *Citywide Waterfront Working Group Member*



Inspiration: Greenpoint-Williamsburg, NYC

# Imagine Boston 2030 Waterfront Potential Actions

Projects	Programs	Regulatory Actions
<ul style="list-style-type: none"> <li>• Guide design &amp; construction of waterfront parklands w/ integrated flood protection systems</li> </ul>	<ul style="list-style-type: none"> <li>• Create vibrant programming that attracts diverse audience and enlivens public open spaces</li> </ul>	<ul style="list-style-type: none"> <li>• Develop/amend MHPs and DPA Master Plans</li> </ul>
<ul style="list-style-type: none"> <li>• Invest in public realm enhancements along waterfront</li> </ul>	<ul style="list-style-type: none"> <li>• Launch a city or regional ferry network</li> </ul>	<ul style="list-style-type: none"> <li>• Institute zoning standards for future flood zones</li> </ul>
		<ul style="list-style-type: none"> <li>• Advocate to MassDEP &amp; CZM for revisions to Ch. 91 and DPA regulations</li> </ul>
		<ul style="list-style-type: none"> <li>• Create regional waterfront coordination/regulation entity</li> </ul>

# Imagine Boston 2030 Waterfront Planning Areas

A closer examination of five planning areas:

1. Dorchester Waterfront
2. Downtown Waterfront
3. Fort Point Channel
4. East Boston Waterfront
5. Long Island



# Imagine Boston 2030 Waterfront Dorchester Waterfront

## Key Issues:

- Flooding
- Water quality
- Access

## Potential Interventions

1. Morrissey Blvd. redesign with flood mitigation, water quality improvements, and inland access
2. Improve quantity, quality, safety of inland-to-waterfront connections
3. Increase protection from storm surge and wave action
4. Integrate east-west Harborwalk connection at Savin Hill Cove with flood protection

"A rationalized and beautified Kosciuszko Circle would greatly improve pedestrian access to the Harborwalk and Carson Beach!"

- Citywide Waterfront Working Group Member



\*With 36" sea level rise

# Imagine Boston 2030 Waterfront Downtown Waterfront

## Key Issues:

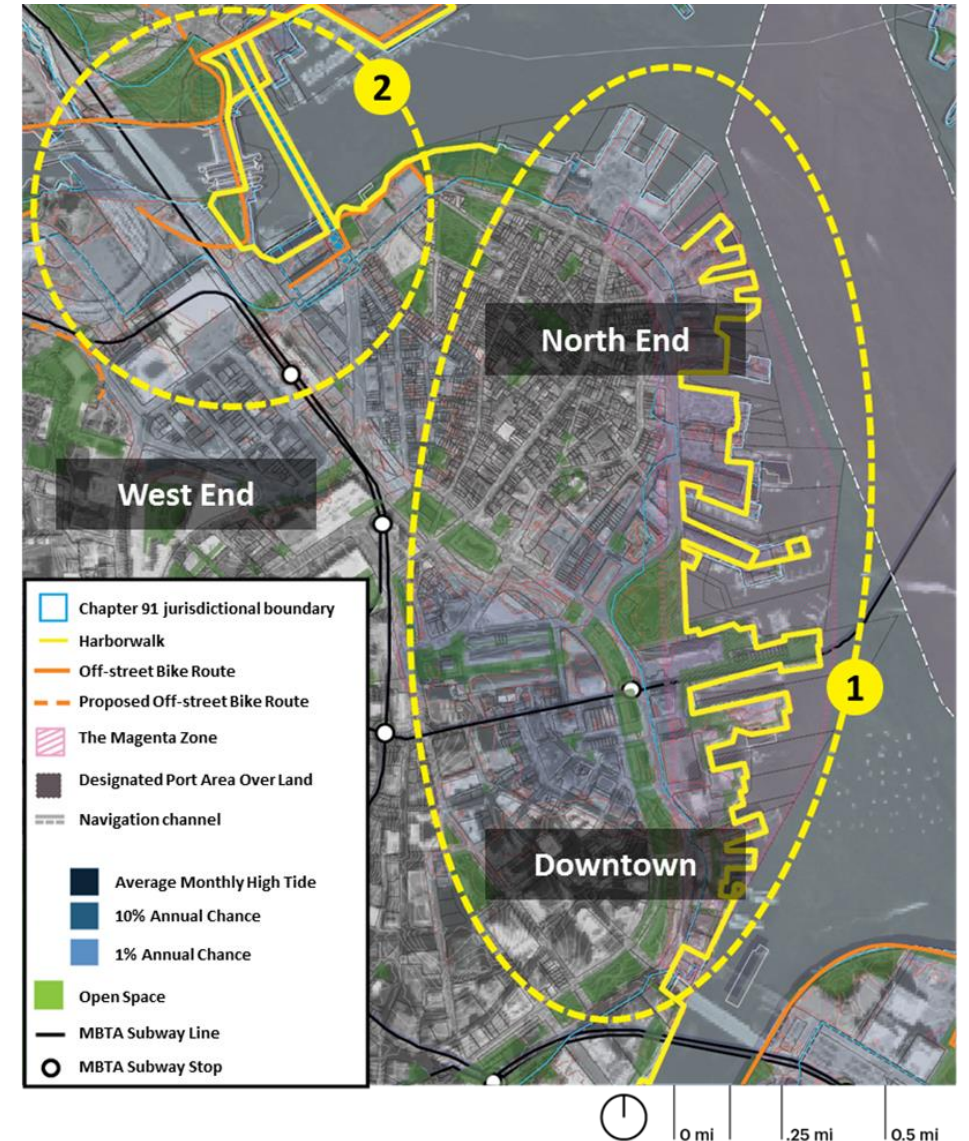
- Destination value
- Access
- Flooding

“The experience along the Harborwalk is inconsistent and, at times, inaccessible. There should be a continuous connection from Long Wharf to the Fort Point Channel.”

- Citywide Waterfront Working Group Member

## Potential Interventions

1. Create a world-class amenity
  - Enhance existing public spaces
  - Harborwalk continuity
  - Activation through programming
  - Connection to Greenway
  - Public realm improvements through development
  - The Magenta Zone
  - Align flood protection
2. Upgrade New Charles River Dam
  - Strengthen flood protection
  - Enhance pedestrian/bike connections



# Imagine Boston 2030 Waterfront Fort Point Channel

## Key Issues:

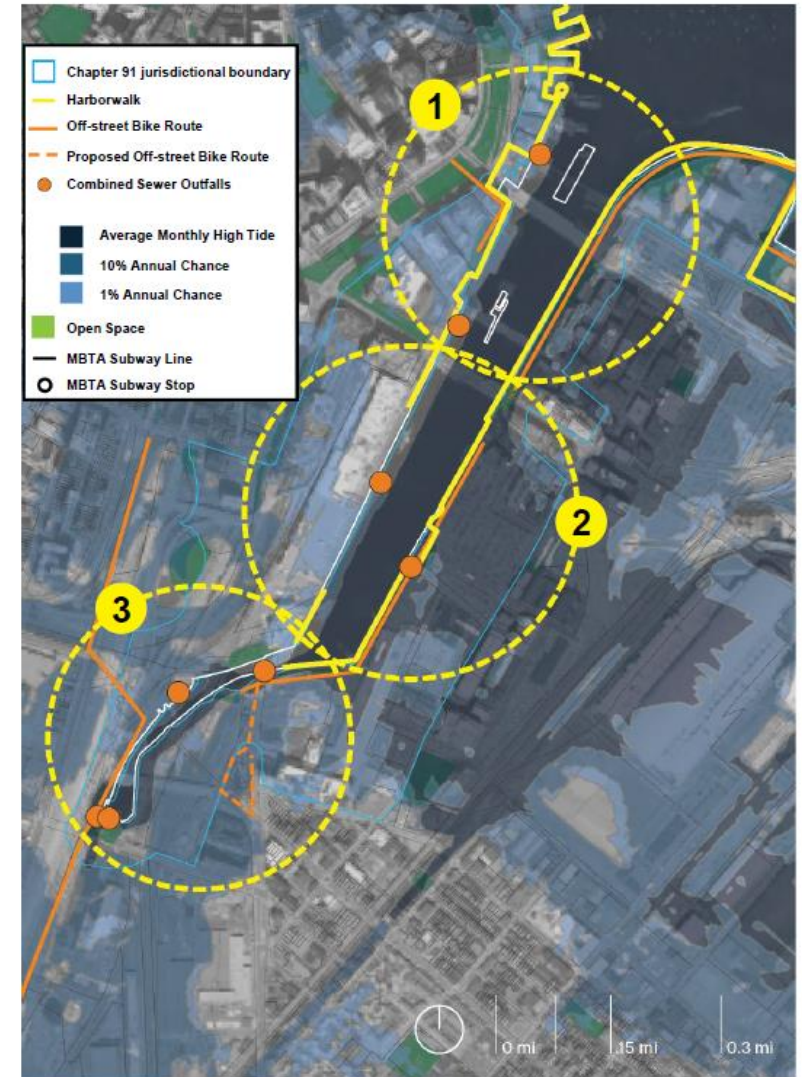
- Flooding
- Connectivity
- Water quality

“Restore and create new pedestrian connections across the Fort Point Channel.”

- Citywide Waterfront Working Group Member

## Potential Interventions

1. Channel Mouth
  - Explore connecting Harborwalk gaps, integrating public realm improvement and flood protection with new Northern Avenue Bridge
2. Middle Channel
  - Near-term public investments to accelerate realization of 100 Acres public realm and reduce flood risk
3. Upper Channel
  - Integrated infrastructure solution for flood defense, improved water quality, habitat support and activation



# Imagine Boston 2030 Waterfront East Boston Waterfront

## Key Issues:

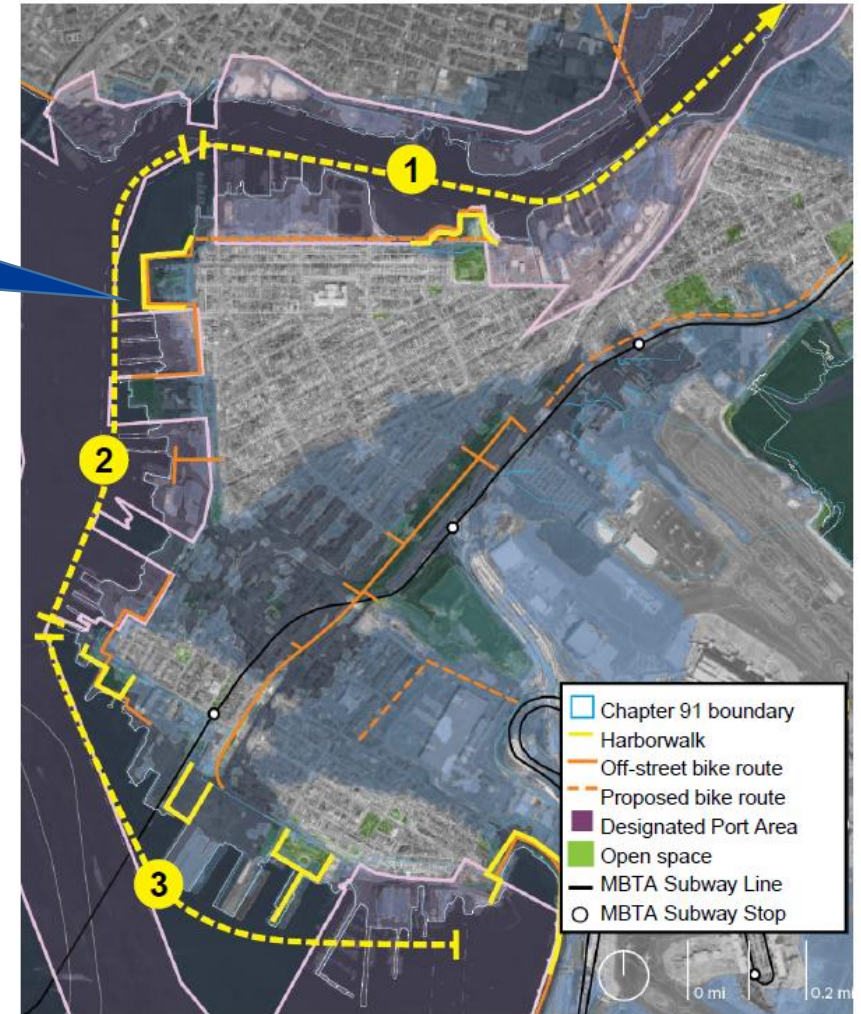
- Connectivity
- Access
- Inactivity

## Potential Interventions

1. A more robust public realm along Chelsea Creek by linking inactive waterfront areas to existing open spaces while restoring ecology and preserving industry
2. Create new access points and new, signature open spaces on western waterfront integrated with inland flood protection
3. New, signature open space along the south edge of the waterfront integrated with inland flood protection

"Improve connections between waterfront open spaces and also with inland open spaces!"

- Citywide Waterfront Working Group Member



# Imagine Boston 2030 Waterfront Long Island

## Key Issues:

- Erosion
- Ecological degradation
- Access

In order to fully realize Long Island's potential as a jewel of the harbor, further study and engagement is required. Potential opportunities include improved access, the rehabilitation, reuse, and expansion of existing facilities for a variety of uses, including the return of social services, preservation of historic structures, opportunities for public/private partnerships, the restoration of landscapes, and the mitigation of flood risk for Boston.



"How can all of the islands work together to protect Boston from storms and flooding?"

- Citywide Waterfront Working Group Member

# IMAGINE

SHARE YOUR VISION.  
SHAPE OUR CITY.

For more details, please see the [Imagine Boston Waterfront Assessment & Vision](#).

