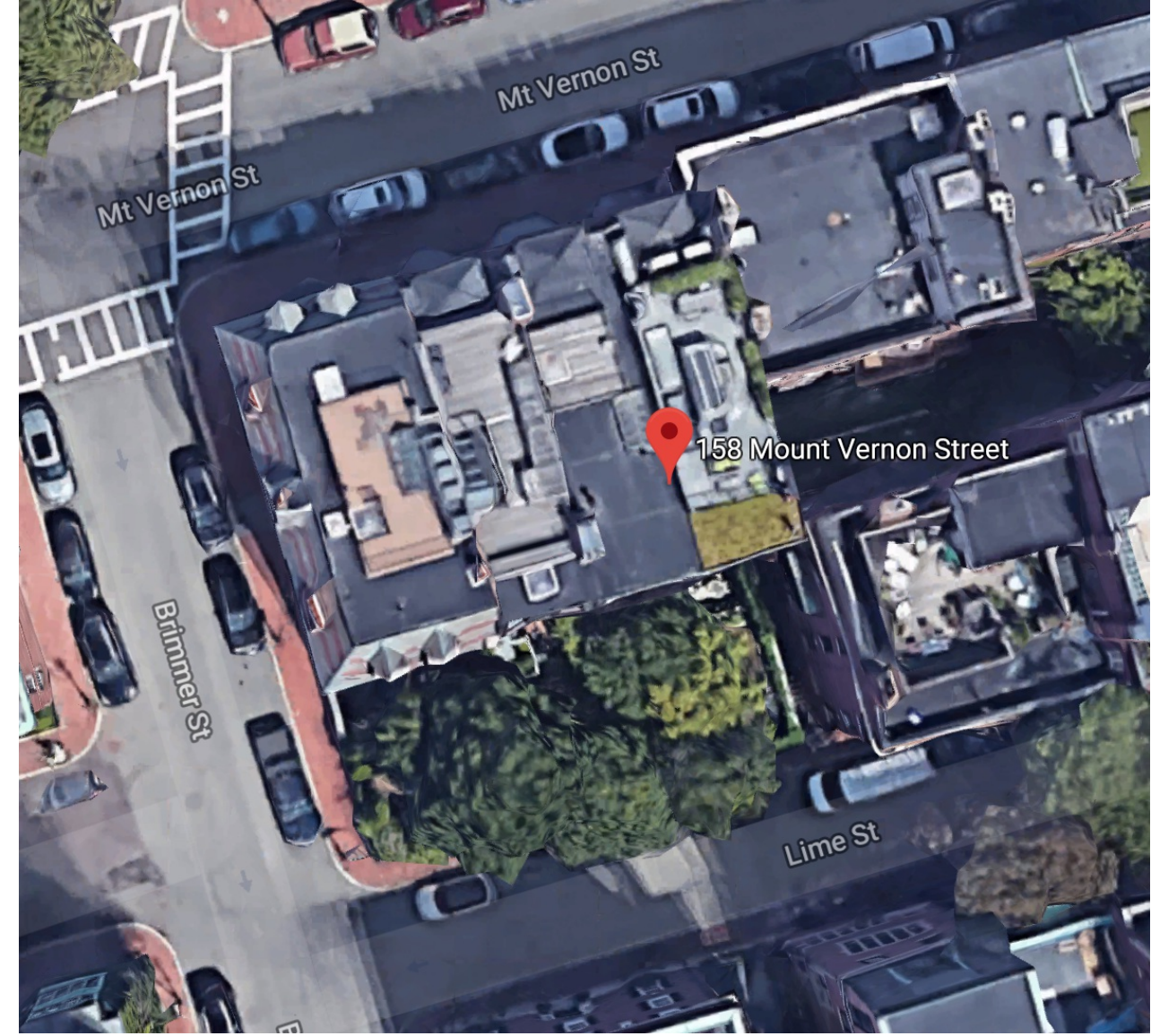


SATELLITE IMAGE



SATELLITE IMAGE

PROPOSED WORK:

1. REPLACE NON-ORIGINAL 6/6 COLONIAL REVIVAL WINDOWS WITH JB SASH PROPER BOSTONIAN 2/2 VICTORIAN WINDOWS, PAINTED BLACK, ORIGINAL WINDOWS ON HOME WERE 2/2 LIGHT LAYOUT
2. REPLACE WINDOW CASING IN KIND, PAINTED BLACK
3. REPLACE FRONT DOOR WITH MAHOGANY, VICTORIAN ENTRY DOOR TO MATCH 156 AND 160 MOUNT VERNON, PAINTED BLACK
4. REPLACE FRONT GARDEN DOOR WITH MAHOGANY, VICTORIAN DOOR, 2 FULL LIGHTS, PAINTED BLACK,
5. SPOT POINT MORTAR JOINTS WITH 1 PART CEMENT, 2 PARTS LIME, 7-9 PARTS SAND, COLOR TO FROM AGGREGATE AND NOT BINDER AND SHOULD MATCH EXISTING COLOR, JOINTS SHALL BE STRUCK TO MATCH EXISTING MORTAR JOINTS
6. REPAIR LINTELS ON REAR
7. REPLACE AND EXPAND EXISTING ROOF DECK, EXISTING ROOF DECK IS CURRENTLY VISIBLE AND PROPOSED MODIFICATION WILL NOT BE ANYMORE VISIBLE THAN ADJACENT NEIGHBORS.
8. ROOF DECK RAILING TO BE METAL RAIL, PAINTED BLACK
9. RELOCATE MECHANICAL VENTING AT UNDER ENTRY STAIRS TO ROOF



158 MT. VERNON

INVENTORY FORM B CONTINUATION SHEET

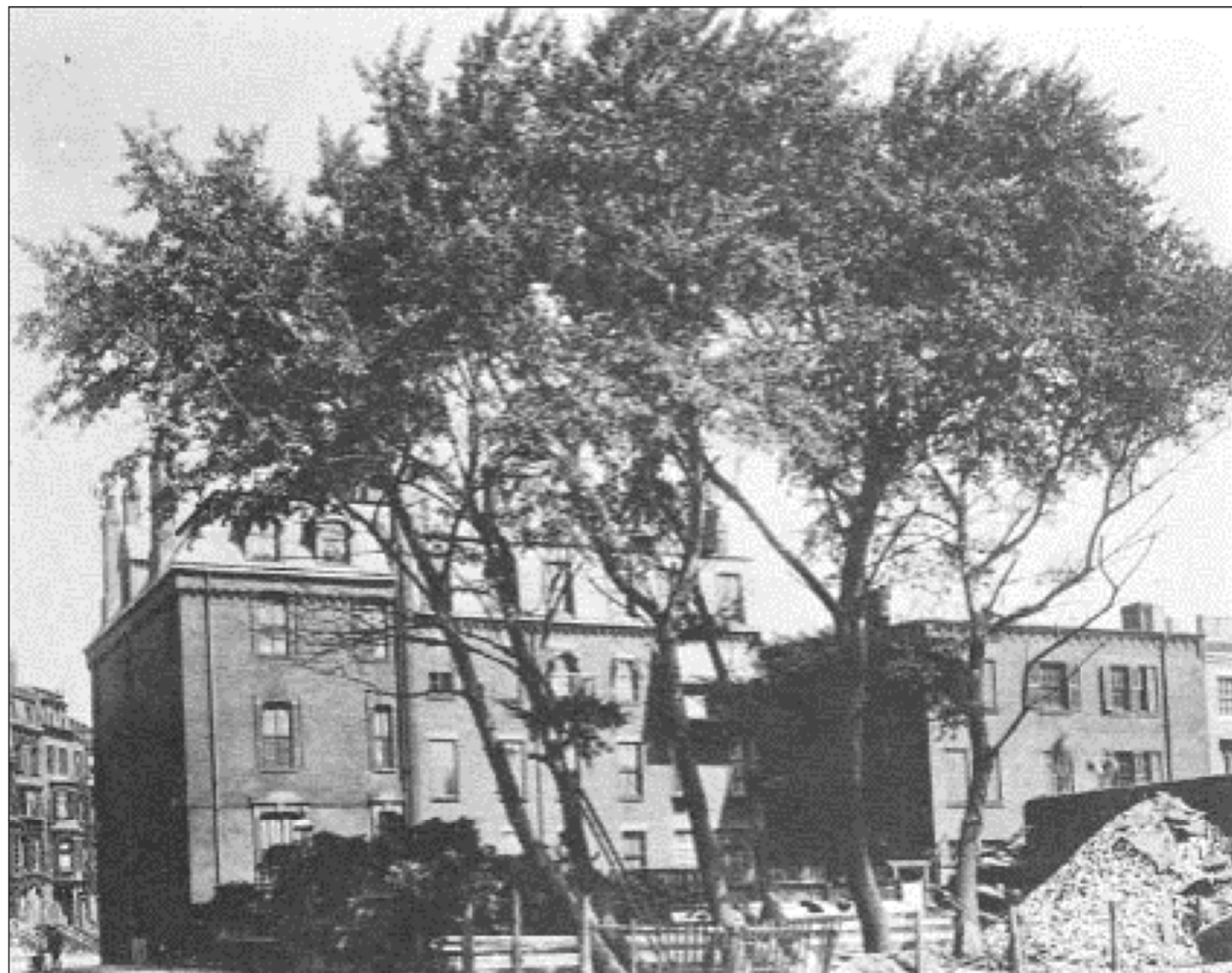
MASSACHUSETTS HISTORICAL COMMISSION
220 MORRISSEY BOULEVARD, BOSTON, MASSACHUSETTS 02125

BOSTON

39 LIME ST

Area(s) Form No.

BE BY 15827



View from southwest, c. 1910. From Samuel Eliot Morison, *One Boy's Boston, 1887-1901* (1962).

REAR OF 158 MOUNT VERNON WITH 2/2 WINDOWS

The second stories have large semi-hexagonal oriels centered on the facades and displaying little ornamentation. The third stories of the houses are separated from one another by recessed panels; each section contains two windows with carved stone lintels, which are connected by a course of vertically-aligned stretchers with every-other brick recessed. This feature forms the base for a brick frieze at the base of a brick cornice with corbelled braces. A copper rain gutter creates the cymatium of the cornice. A slate mansard roof spans all three units, and each has a large dormer with two windows recessed within, which gives the sense of each house having an independent roof. The slate on the roof and dormers appears to have been recently replaced. Except for the conditions already mentioned, the facades are essentially intact. Window sash in 156 and 158 have been changed from two-over-two type to multi-pane configurations reflecting changes of taste occurring during the Colonial Revival Period.



ENTRY DOOR OF 158 AND 156



GARDEN LEVEL DOOR OF 158



VIEW FROM MT. VERNON AND BRIMMER



VIEW FROM BRIMMER



VIEW FROM BRIMMER



VIEW FROM BRIMMER



VIEW FROM LIME STREET



CLOSE UP FROM LIME STREET



FRONT ELEVATION



REAR ELEVATION



GARDEN LEVEL DOOR



EXISTING FRONT ELEVATION

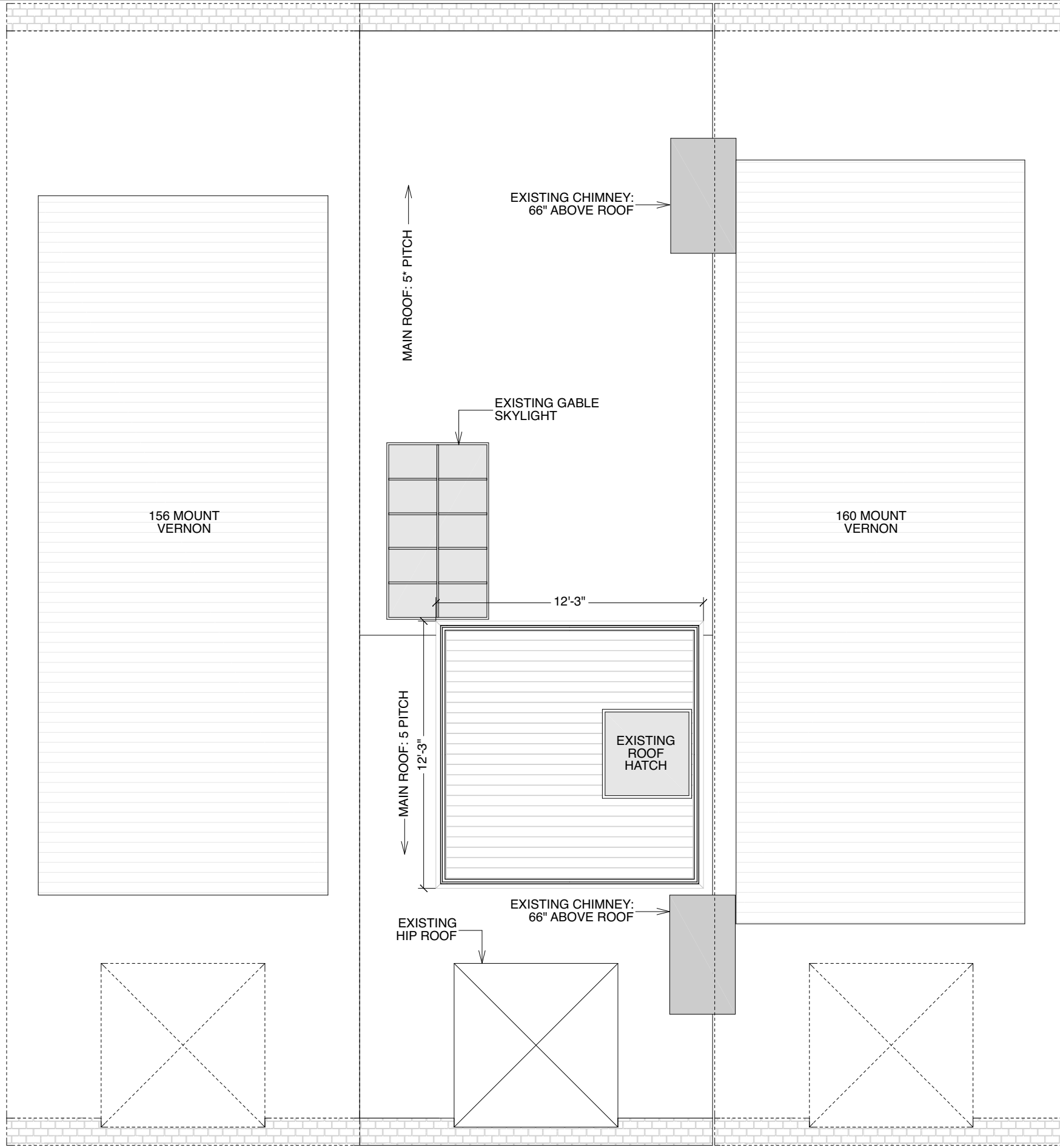
PROPOSED FRONT ELEVATION



EXISTING REAR ELEVATION

PROPOSED REAR ELEVATION

EXISTING ROOF PLAN



DATE:
6/27/18

SCALE:
3/16" = 1'-0"

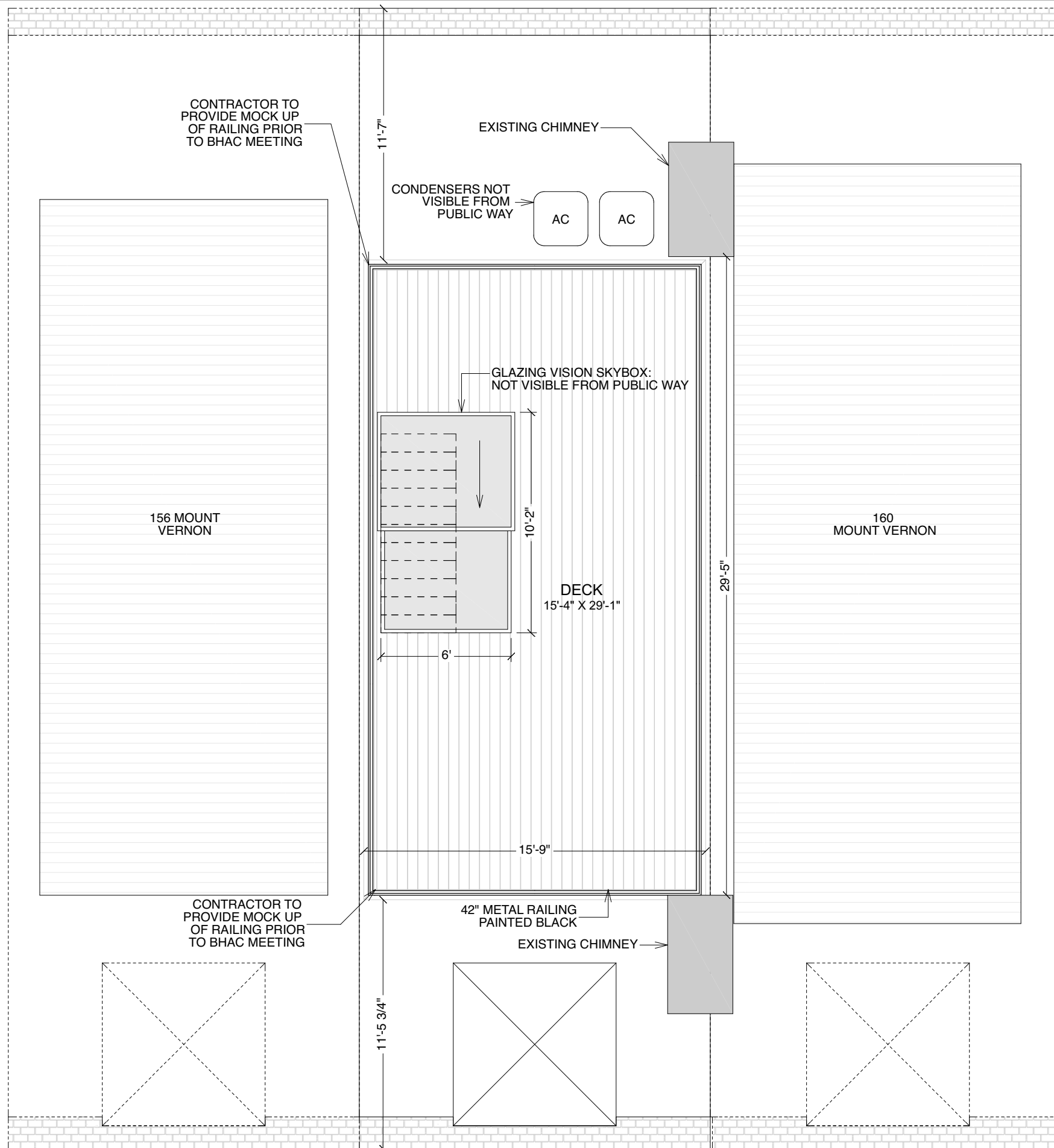
#158 MT. VERNON ST.
BOSTON, MA

DUSTIN NOLIN R.A.
745 BOYLSTON STREET
7th FLOOR
BOSTON, MA 02116
781.718.8009
dustin@dna-architecture.com

DNA
ARCHITECTURE

A8

PROPOSED ROOF PLAN



DATE:
6/27/18

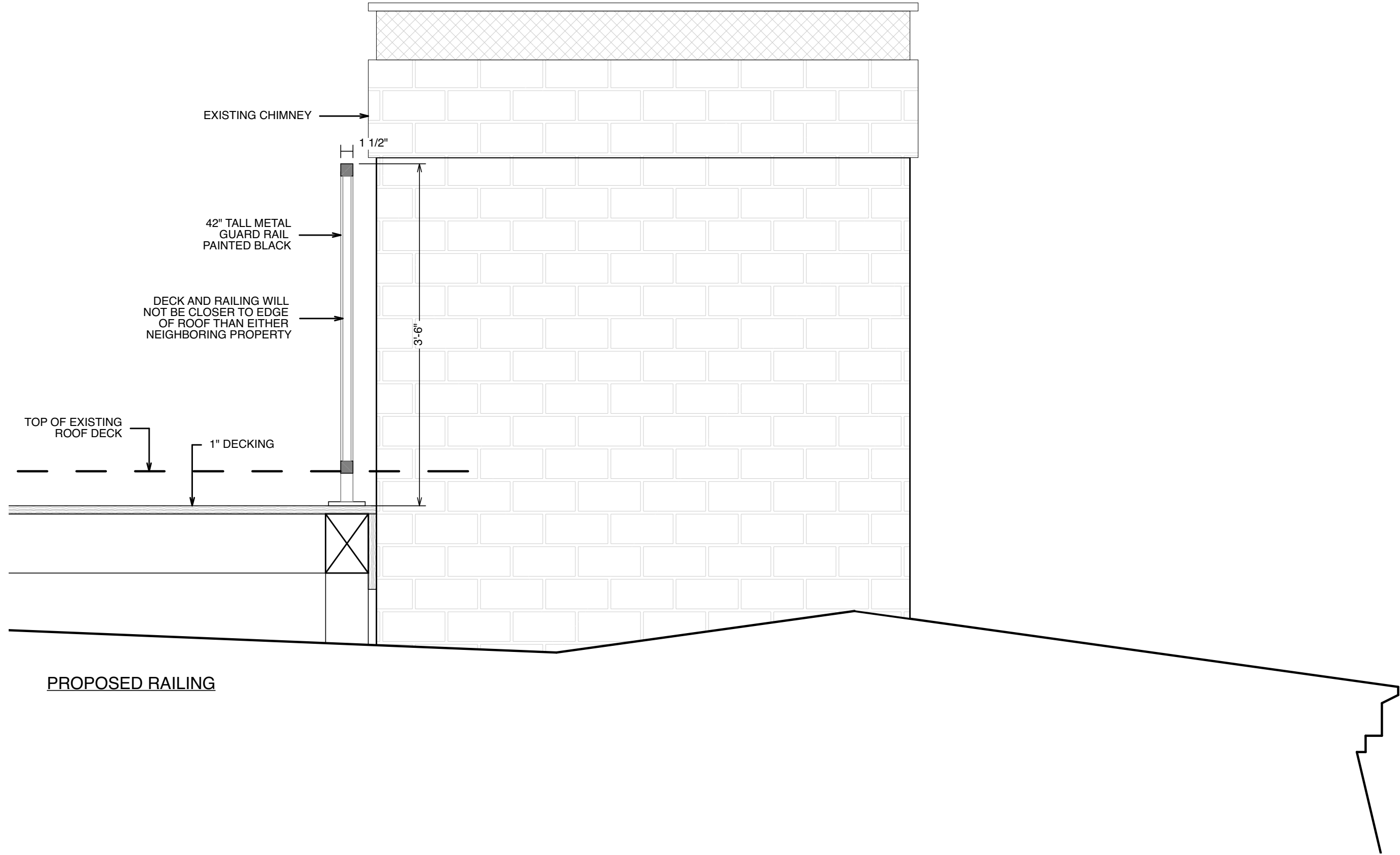
SCALE:
3/16" = 1'-0"

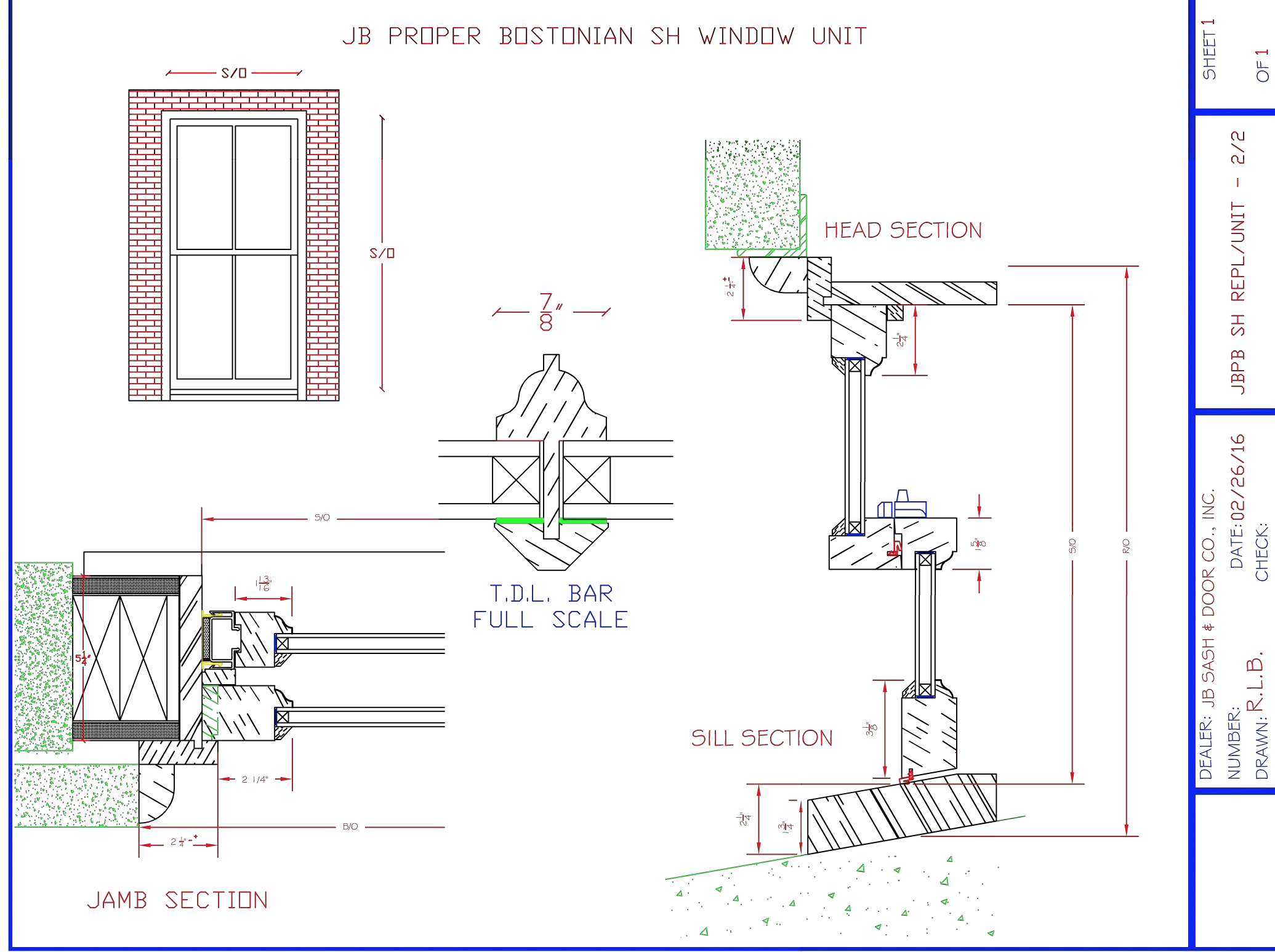
#158 MT. VERNON ST.
BOSTON, MA

DUSTIN NOLIN R.A.
745 BOYLSTON STREET
7th FLOOR
BOSTON, MA 02116
781.718.8009
dustin@dna-architecture.com

DNA
ARCHITECTURE

A9





SHEET 1

OF 1

JBPB SH REPL/UNIT - 2/2

DEALER: JB SASH & DOOR CO., INC.
 NUMBER: DATE: 02/26/16
 DRAWN: R.L.B. CHECK:

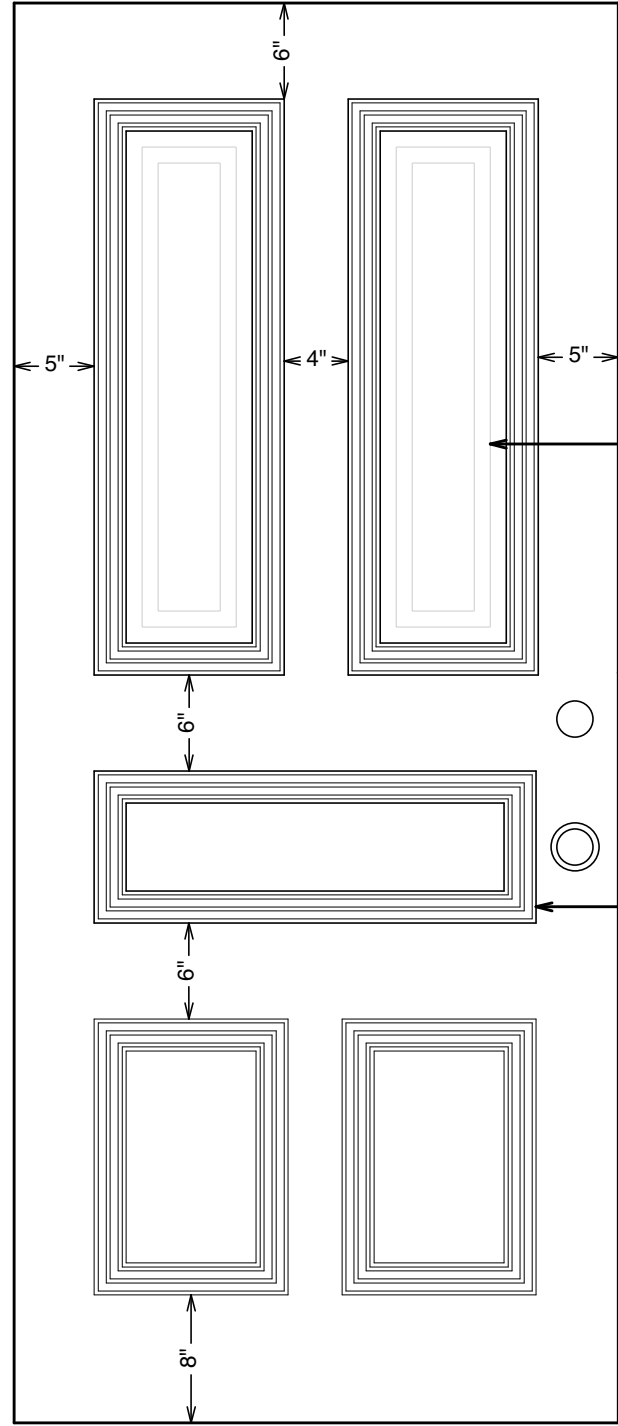
DATE:
6/27/18

REV:

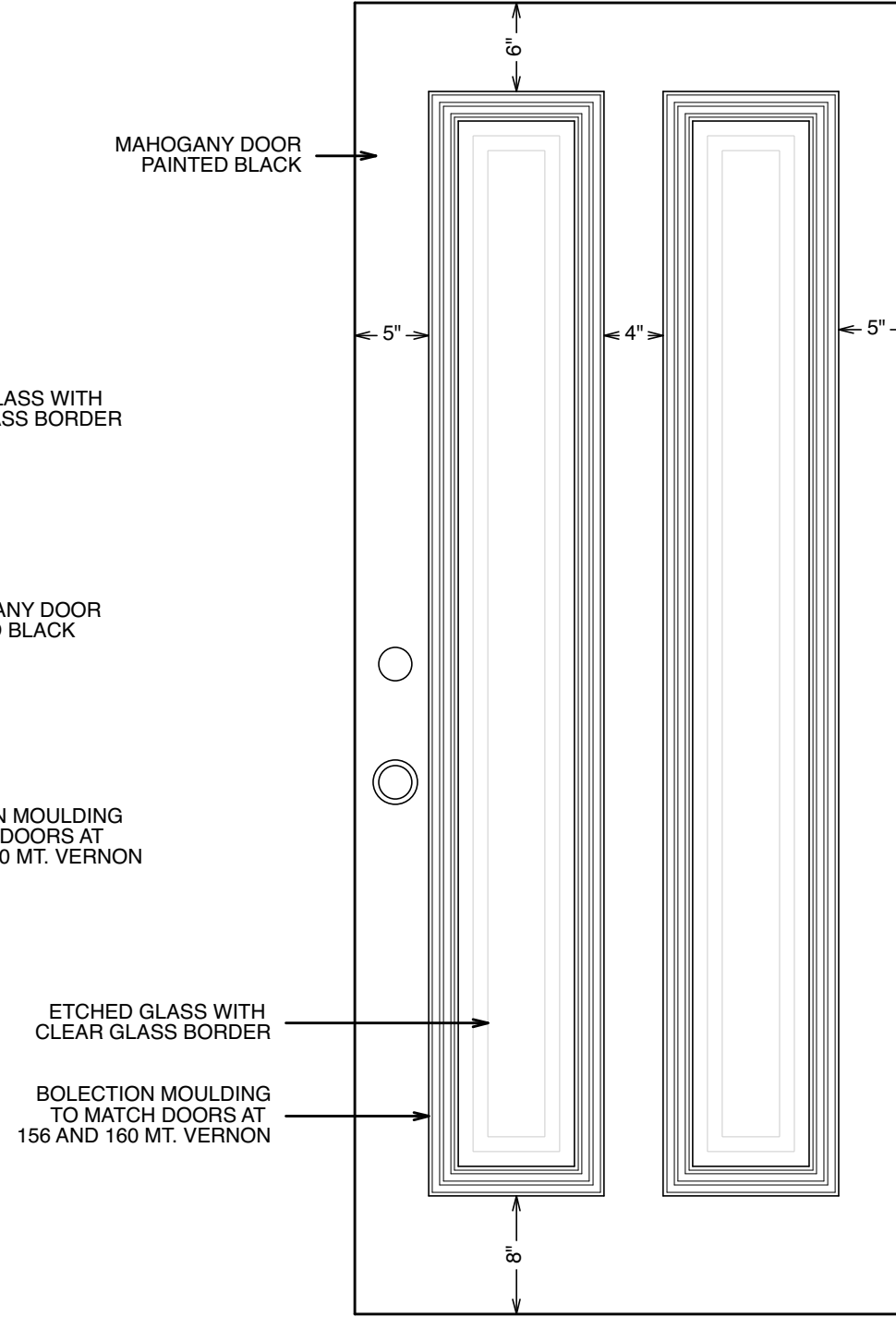
SCALE:

#158 MT. VERNON ST.
 BOSTON, MA

DUSTIN NOLIN R.A.
 745 BOYLSTON STREET
 7th FLOOR
 BOSTON, MA 02116
 781.718.8009
 dustin@dna-architecture.com



PROPOSED ENTRY DOOR



PROPOSED GARDEN DOOR

MAHOGANY DOOR
PAINTED BLACK

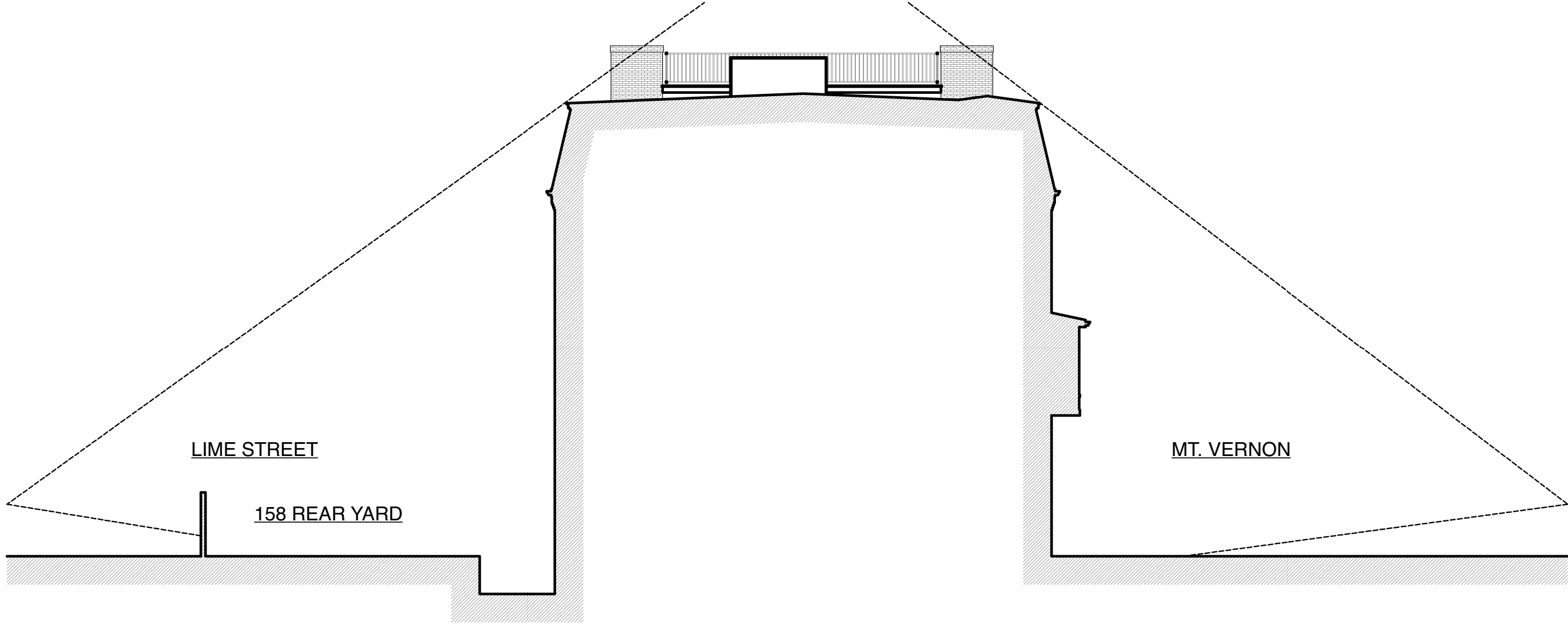
ETCHED GLASS WITH
CLEAR GLASS BORDER

MAHOGANY DOOR
PAINTED BLACK

BOLECTION MOULDING
TO MATCH DOORS AT
156 AND 160 MT. VERNON

ETCHED GLASS WITH
CLEAR GLASS BORDER

BOLECTION MOULDING
TO MATCH DOORS AT
156 AND 160 MT. VERNON



LIME STREET

158 REAR YARD

MT. VERNON

DATE:
6/27/18

REV:

SCALE:

#158 MT. VERNON ST.
BOSTON, MA

DUSTIN NOLIN R.A.
745 BOYLSTON STREET
7th FLOOR
BOSTON, MA 02116
781.718.8009
dustin@dna-architecture.com

DNA
ARCHITECTURE

A13