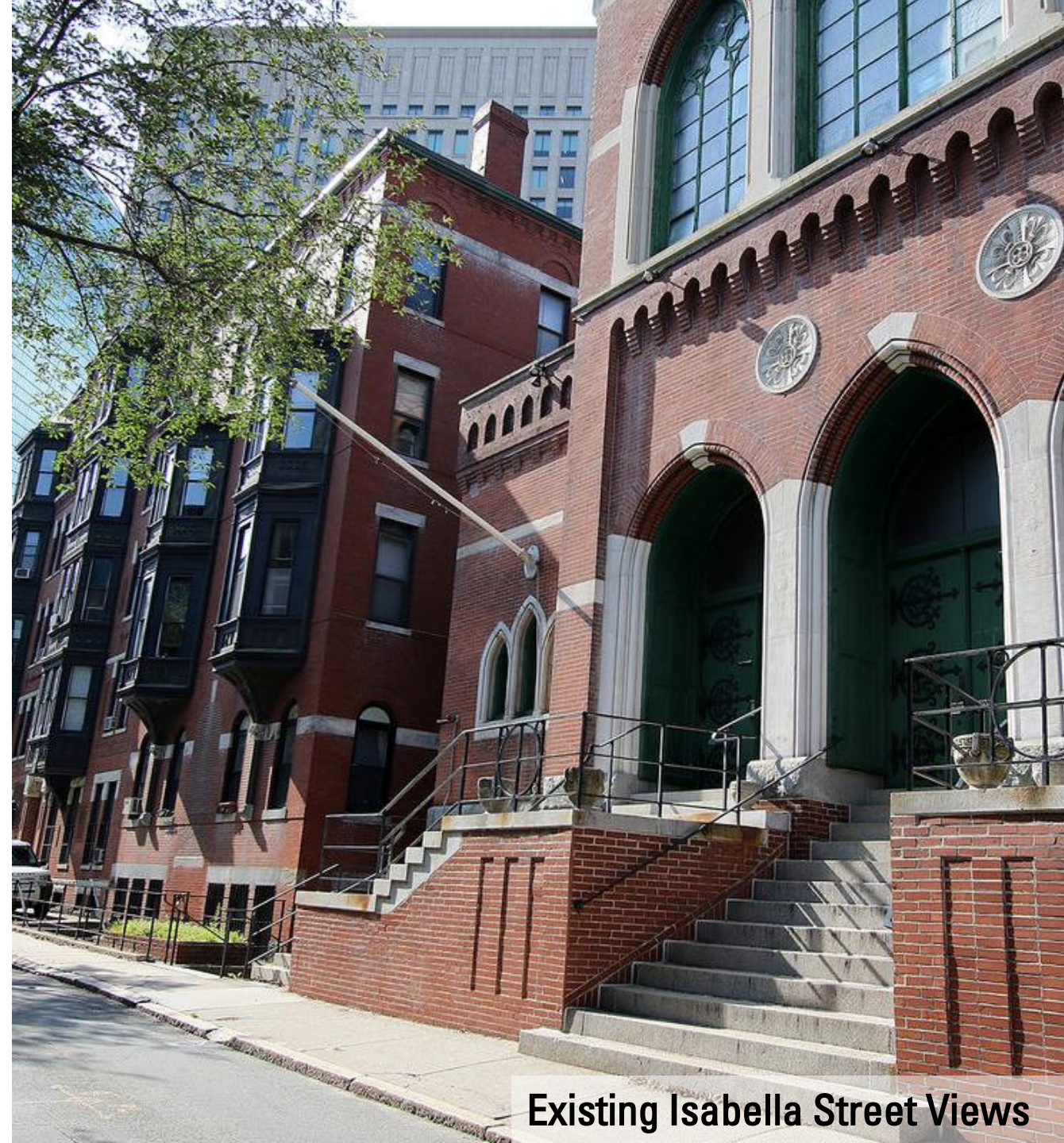


19 Isabella Street  
Project Introduction  
Bay Village Historic District Commission  
November 13, 2018





Existing Isabella Street looking East



Existing Isabella Street Views



OUR LADY OF VICTORIES  
CATHOLIC CHURCH

Existing Arlington Street View



BEGINNING AT THE SOUTHEASTERLY CORNER OF THE PREMISES, SAID CORNER BEING 213.00 FEET WEST OF THE INTERSECTION OF ISABELLA STREET AND ARLINGTON STREET, THENCE RUNNING S 89°53'00" W, ALONG ISABELLA STREET, A DISTANCE OF 44.00 FEET TO A POINT;

THENCE TURNING AND RUNNING N 00°07'00" W, BY LAND NOW OR FORMERLY OF MARIST FATHERS OF BOSTON, A DISTANCE OF 93.56 FEET TO A POINT;

THENCE TURNING AND RUNNING N 42°26'27" E, BY A VARIABLE WIDTH PASSAGEWAY, A DISTANCE OF 1.08 FEET TO A POINT;

THENCE TURNING AND RUNNING S 00°23'44" E, BY LOT "B" SHOWN ON A PLAN HEREINAFTER DESCRIBED, A DISTANCE OF 18.95 FEET TO A POINT;

THENCE TURNING AND RUNNING N 89°36'16" E, ALONG THE FACE OF A BRICK BUILDING AND THE AFOREMENTIONED LOT, A DISTANCE OF 43.17 FEET TO A POINT;

THENCE TURNING AND RUNNING S 00°07'00" E, BY SAID LOT, A DISTANCE OF 75.62 FEET TO THE POINT OF BEGINNING.

THE ABOVE DESCRIBED LAND CONTAINS AN AREA OF 3,337 SQUARE FEET MORE OR LESS AND IS SHOWN AS LOT "A" ON A PLAN ENTITLED "PLAN OF LAND, 27-29 ISABELLA STREET, BOSTON, MASS.," DATED DECEMBER 19, 2016, PREPARED BY FELDMAN LAND SURVEYORS.

**BOUNDARY DESCRIPTION**

THE SOUTHEASTERLY CORNER OF THE LOT BEING 213.00 FEET WEST OF THE INTERSECTION OF ISABELLA STREET AND ARLINGTON STREET, THENCE RUNNING S 89°53'00" W, A DISTANCE OF 44.00 FEET TO A POINT;

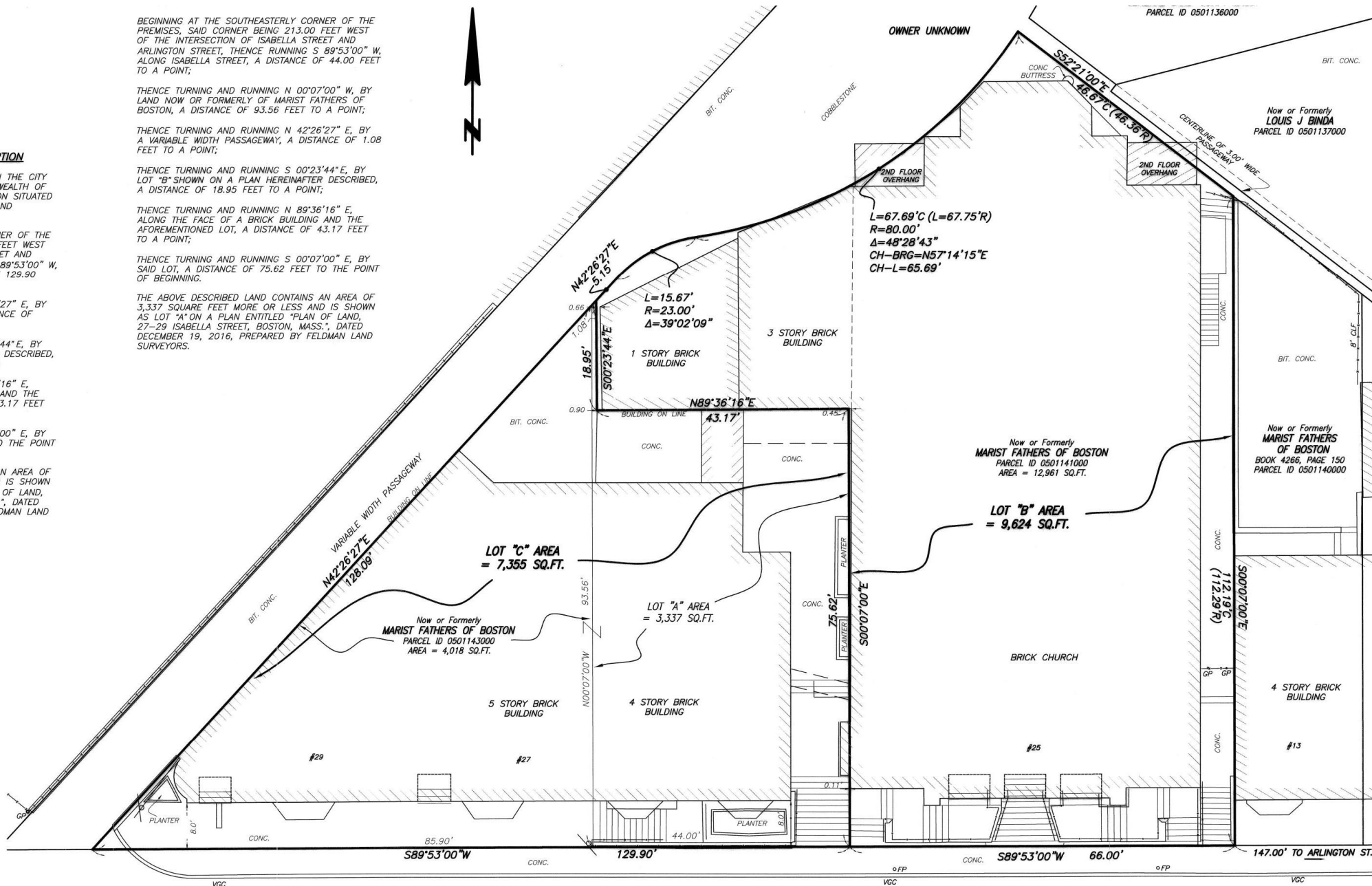
THENCE RUNNING N 42°26'27" E, BY A VARIABLE WIDTH PASSAGEWAY, A DISTANCE OF 1.08 FEET TO A POINT;

THENCE RUNNING S 00°23'44" E, BY LOT "B" SHOWN ON A PLAN HEREINAFTER DESCRIBED, A DISTANCE OF 18.95 FEET TO A POINT;

THENCE RUNNING N 89°36'16" E, ALONG THE FACE OF A BRICK BUILDING AND THE AFOREMENTIONED LOT, A DISTANCE OF 43.17 FEET TO A POINT;

THENCE RUNNING S 00°07'00" E, BY SAID LOT, A DISTANCE OF 75.62 FEET TO THE POINT OF BEGINNING.

THE ABOVE DESCRIBED LAND CONTAINS AN AREA OF 3,337 SQUARE FEET MORE OR LESS AND IS SHOWN AS LOT "A" ON A PLAN ENTITLED "PLAN OF LAND, 27-29 ISABELLA STREET, BOSTON, MASS.," DATED DECEMBER 19, 2016, PREPARED BY FELDMAN LAND SURVEYORS.



**REFERENCES**

SUFFOLK COUNTY BOOK 169, BOOK 426, BOOK 615

PLAN IN B

CITY OF BOSTON

PLAN NO.

**NOTES**

A CERTAIN OF BOSTON MASSACHUSETTS AT 19 IS AS FOLLO

BEGINNING PREMISES OF THE IN ARLINGTON ALONG IS TO A POINT

THENCE 1 LOT "A" SAID DISTANCE

THENCE 1 ALONG THE AFOREMENTIONED TO A POINT

THENCE 1 SAID LOT,

THENCE 1 A VARIABLE FEET TO

THENCE 1 TO THE RADIUS 0 FEET TO

THENCE 1 THE LEFT, OF 80.00 BEARING OF 65.69 OF THE V WIDE PAS

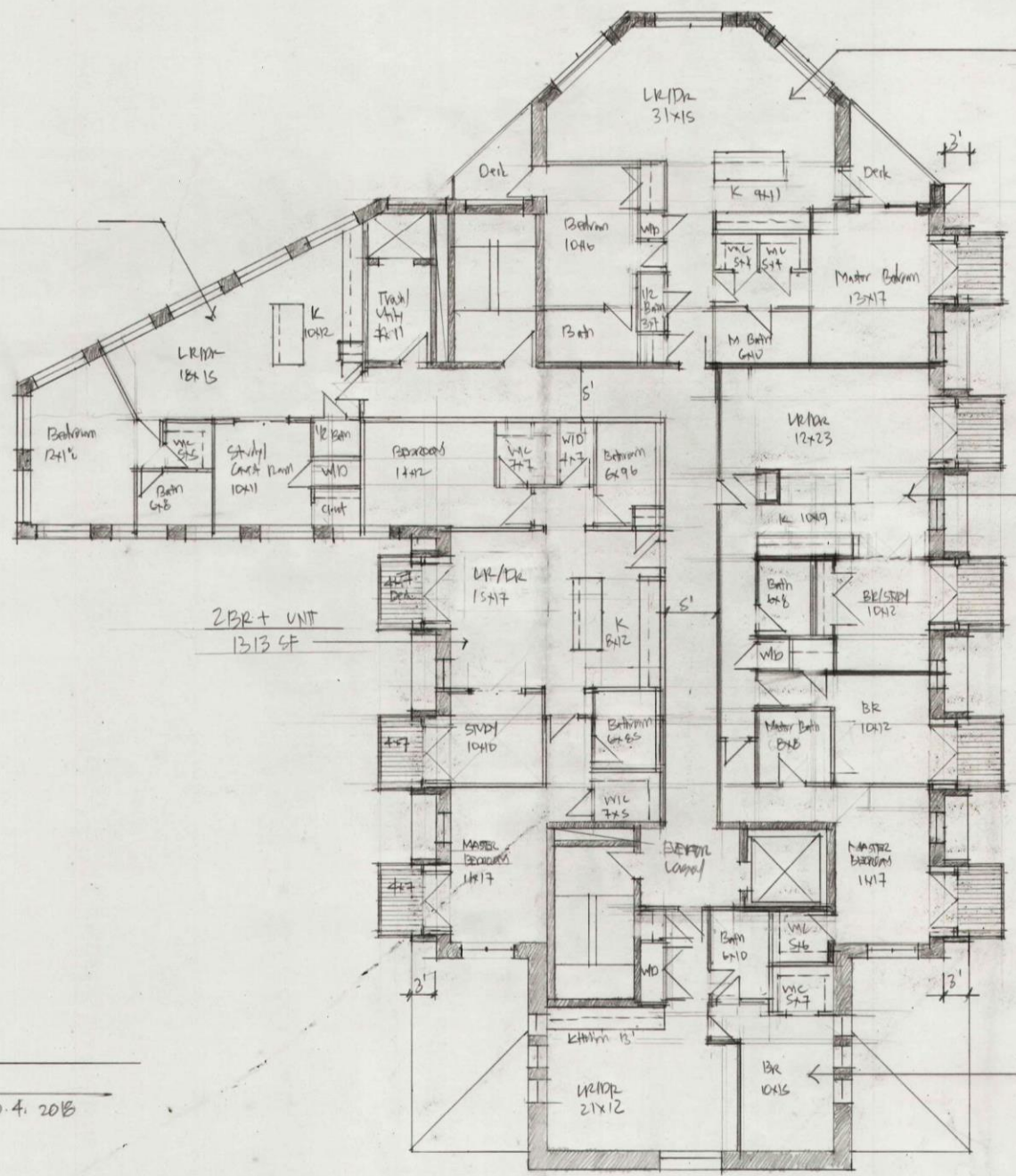
THENCE 1 SAID PASSAGEWAY AT FATHERS

THENCE 1 SAID MAR OF 112.1

THE ABOVE 9,624 SQ AS LOT "B" 27-29 IS DECEMBER SURVEY OF

1 BR + UNIT  
990 SF

2 BR UNIT  
1336 SF



ISABELLA CHURCH  
 TYPICAL FLOOR 4-6  
 1/8" = 1'-0"  
 10.4.2018

1 BR UNIT  
718 SF

Conceptual Floor Plan



Proposed Isabella Street View



Proposed Arlington Street View: Option 1





Proposed Arlington Street View: Option 2