

554 Mass Ave
Boston MA 02118



554 MASS Ave
Boston MA 02118
6. Existing Windows at Garden level



original →
bottom side
of window

original
right side
of window

Left window
554 Mass Ave
Boston MA 02118



original
left side
of window

original
bottom
side
of window

Right Window
554 MASS Ave
Boston MA 02118

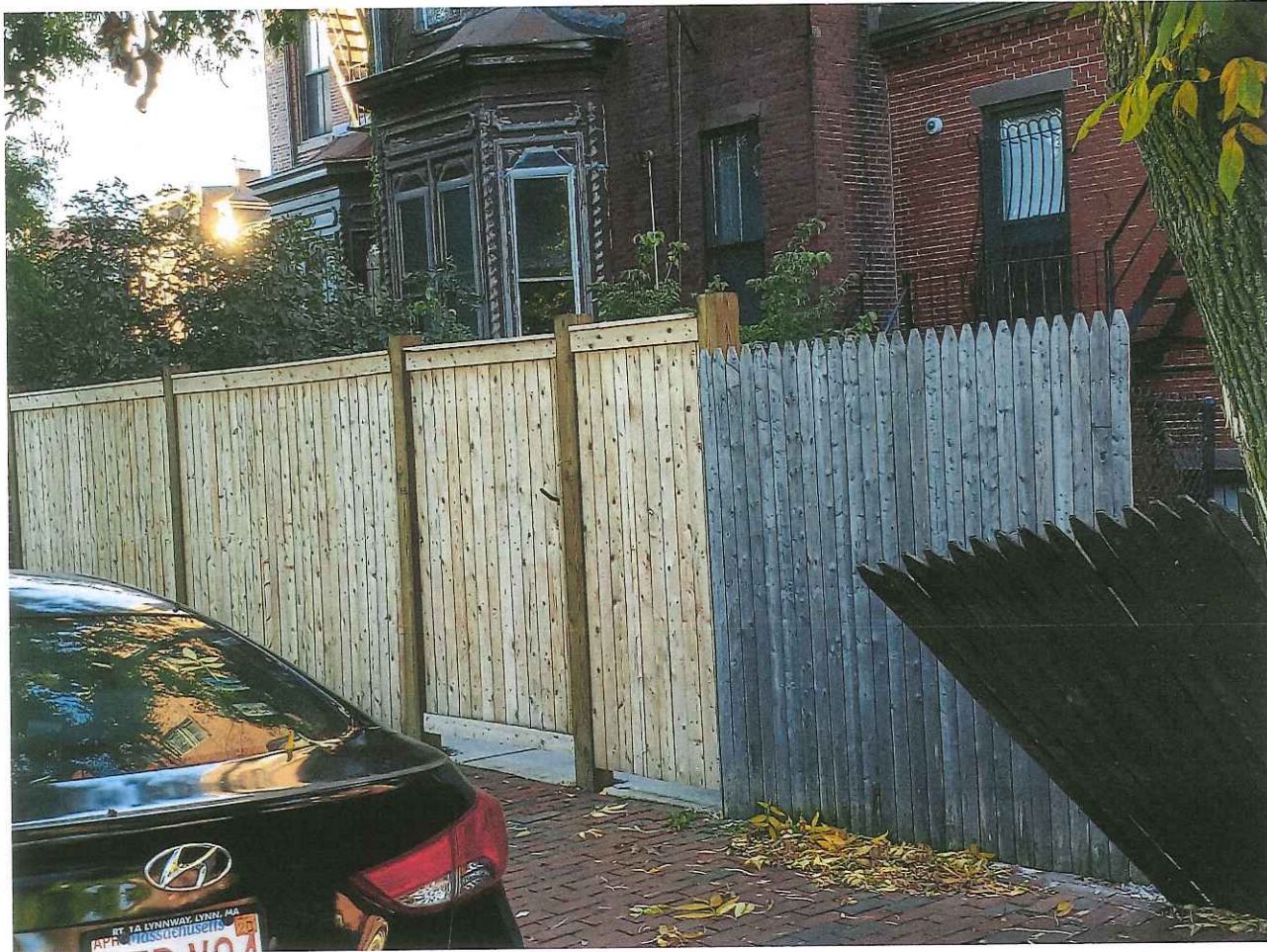


Neighboring windows
to 554 MASS Ave

554 Mass Ave
near 554 W. Springfield St.

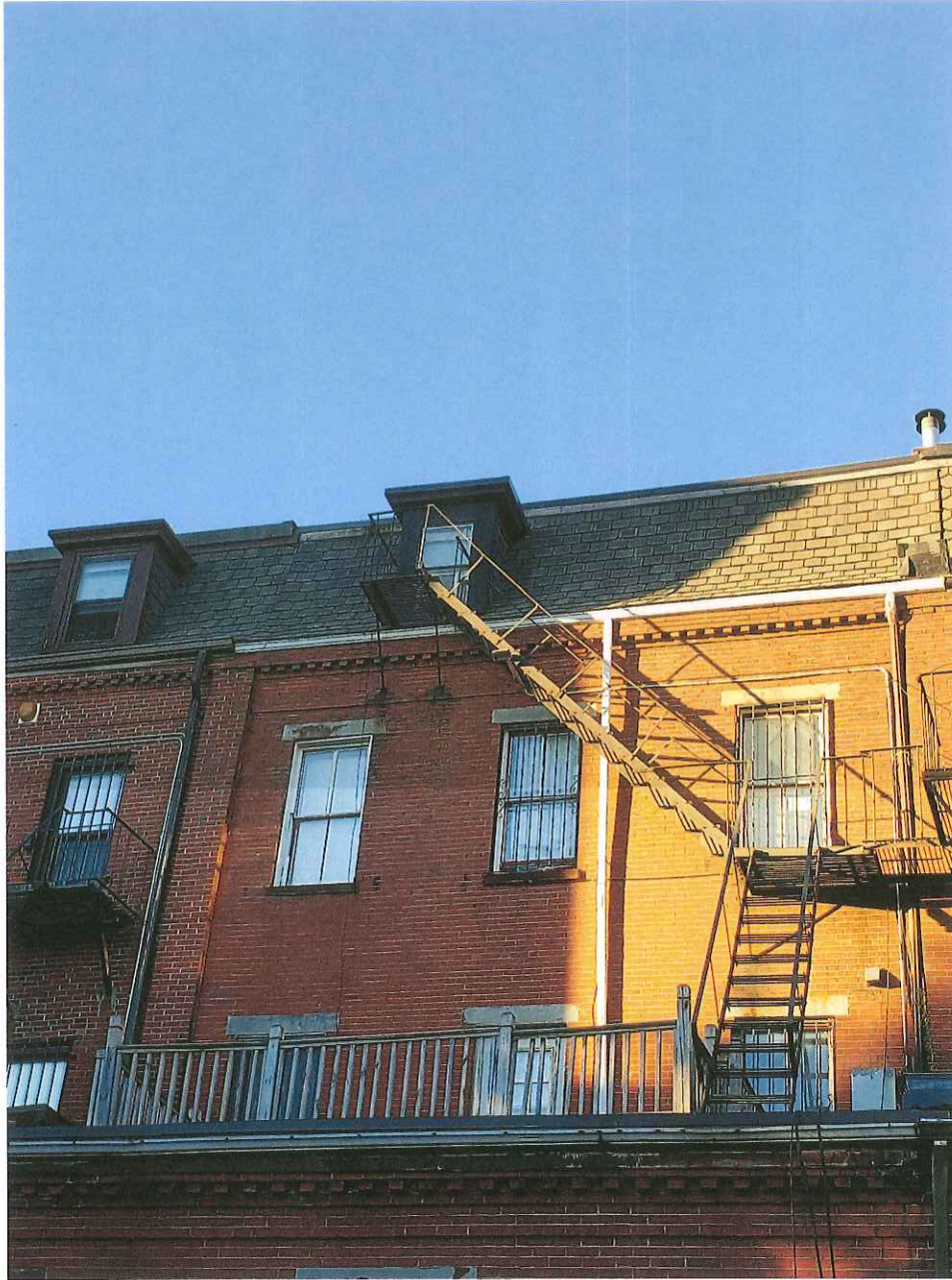
1. repoint wall in kind
2. replace gutters and downspouts
brown color to conceal it as much as possible

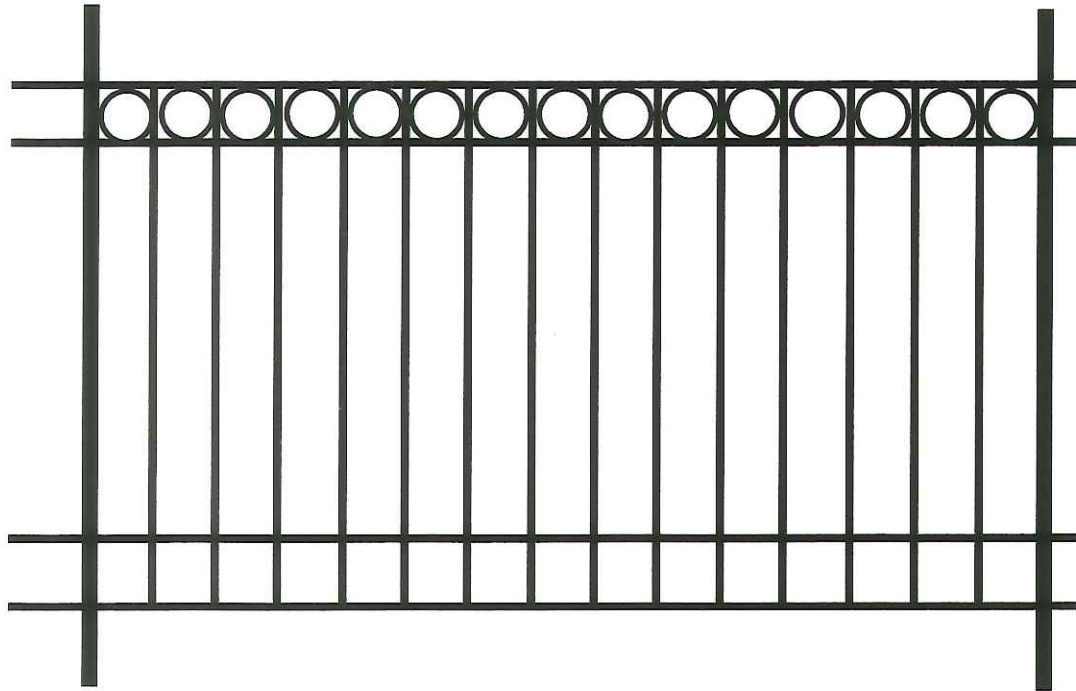




Rear of 554 MASS AVE @ 554 W. Springfield St
3. Replace picket fence with the style on the left of the fence
which is 556 Mass Ave

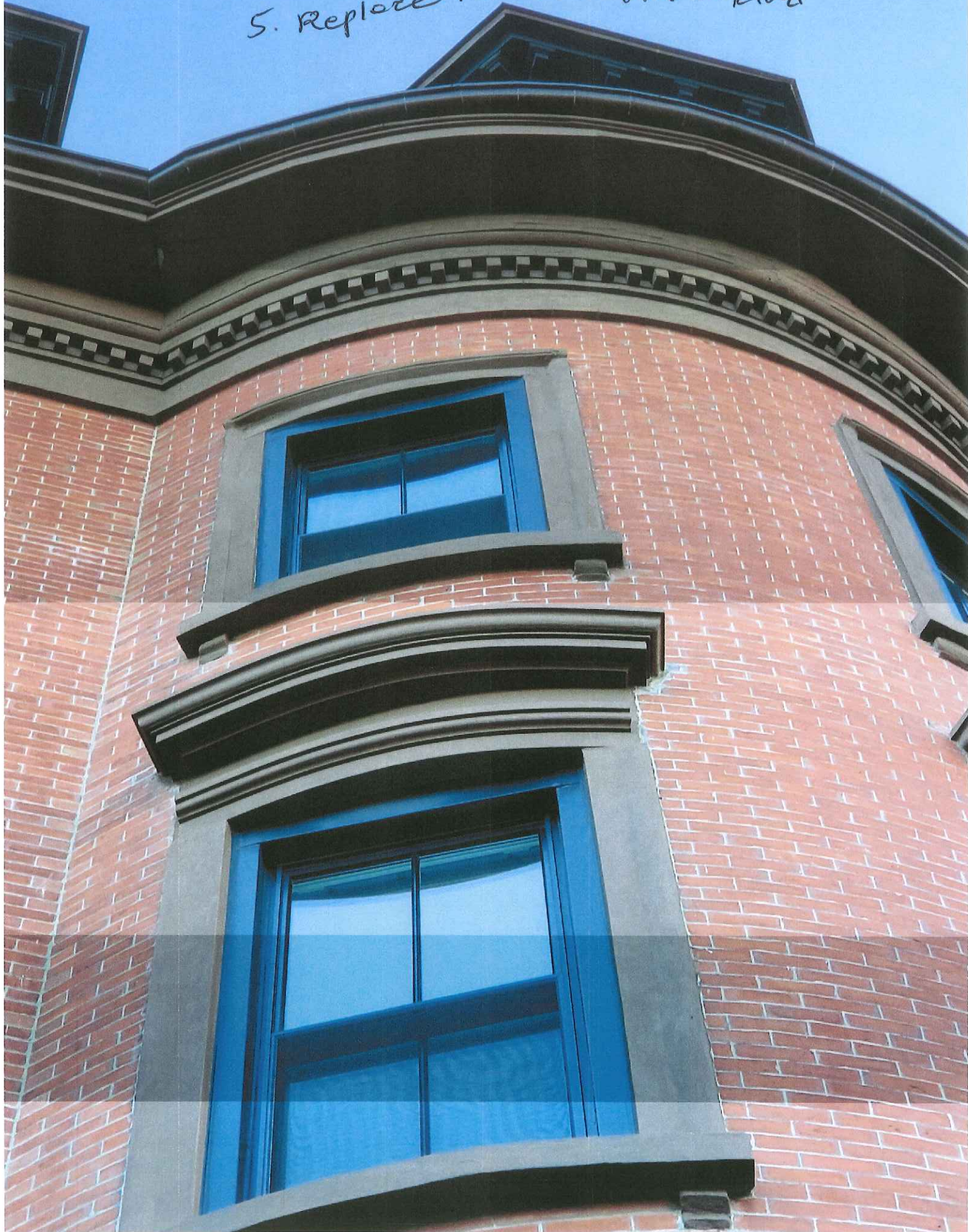
554 Moss Ave
rear 554 W. Springfield St
4. replace rotted wood deck



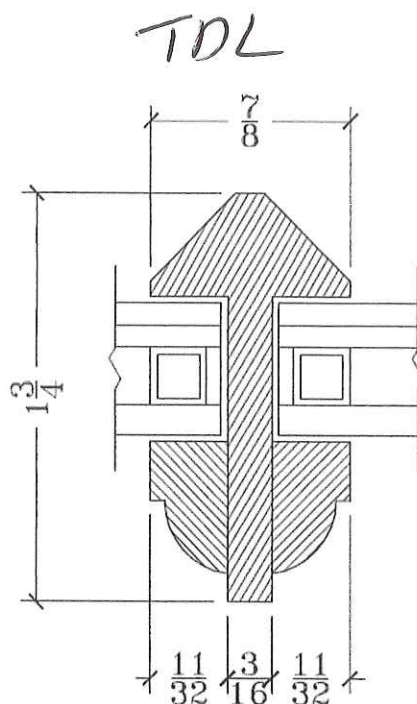


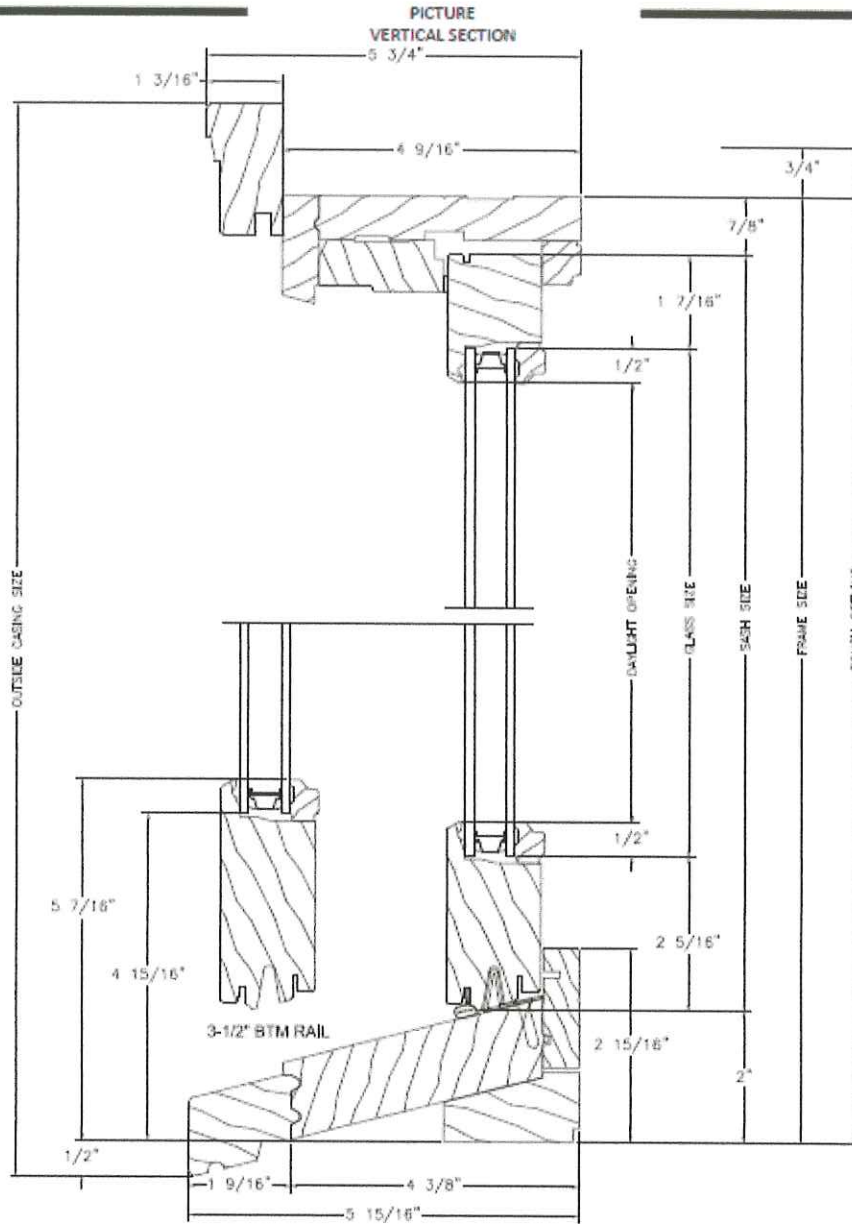
554 West Springfield Street Boston, MA. 02118
Railing system for roof deck and Balconies 42" high

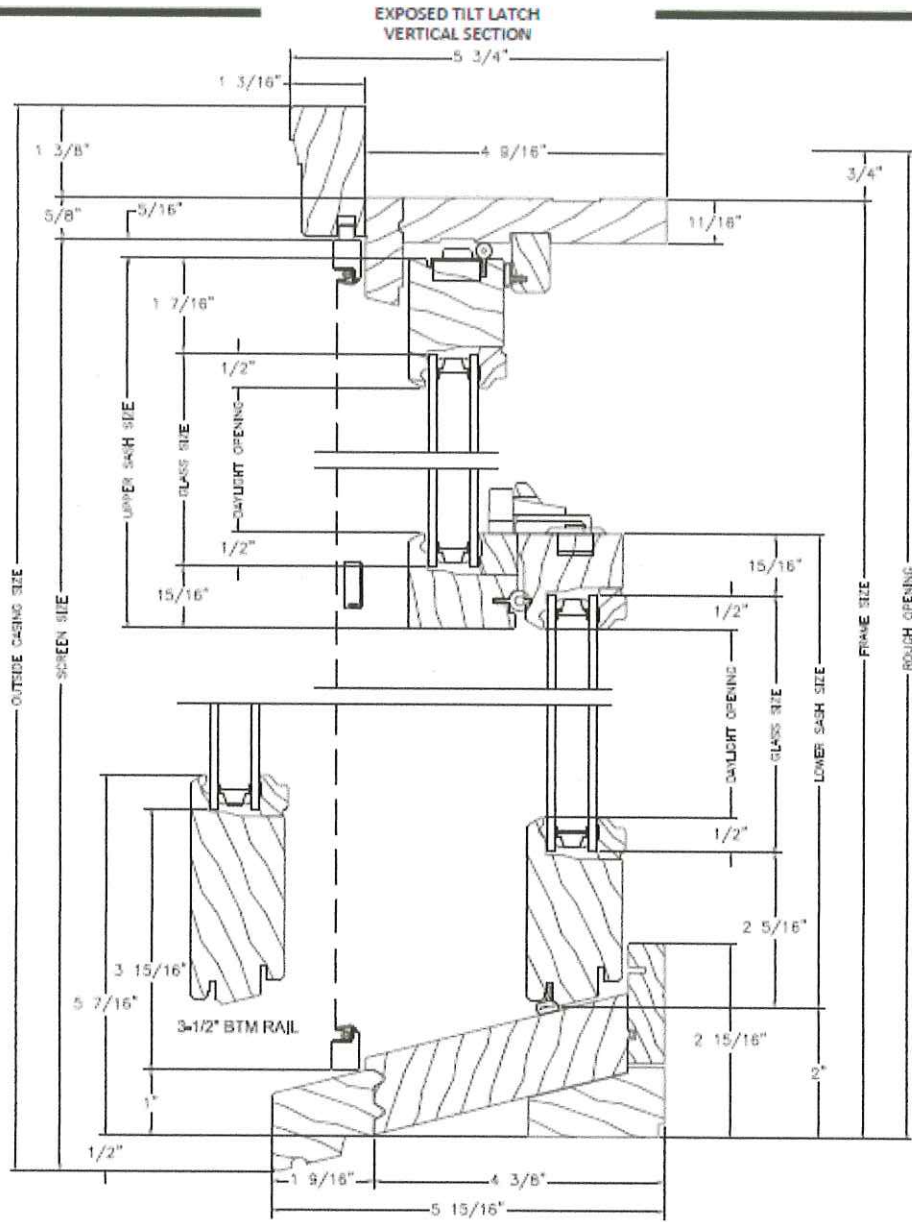
554 Mass Ave
5. Replace rotted Soffit in kind



DIVIDED LITE OPTIONS







HANDING & OPERATION
DOUBLE-HUNG



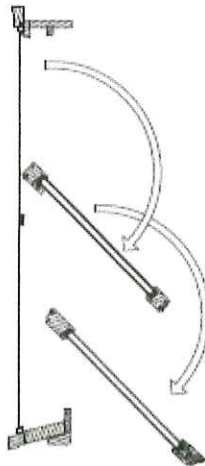
DOUBLE HUNG OPERATION:
When the sash are locked at the check rails the sash are closed and sealed in the sash opening of the frame.

When the sash are unlocked the lower sash travels vertically to any position desired. The upper sash can also be positioned as desired.



SASH TILTING FOR WASHING

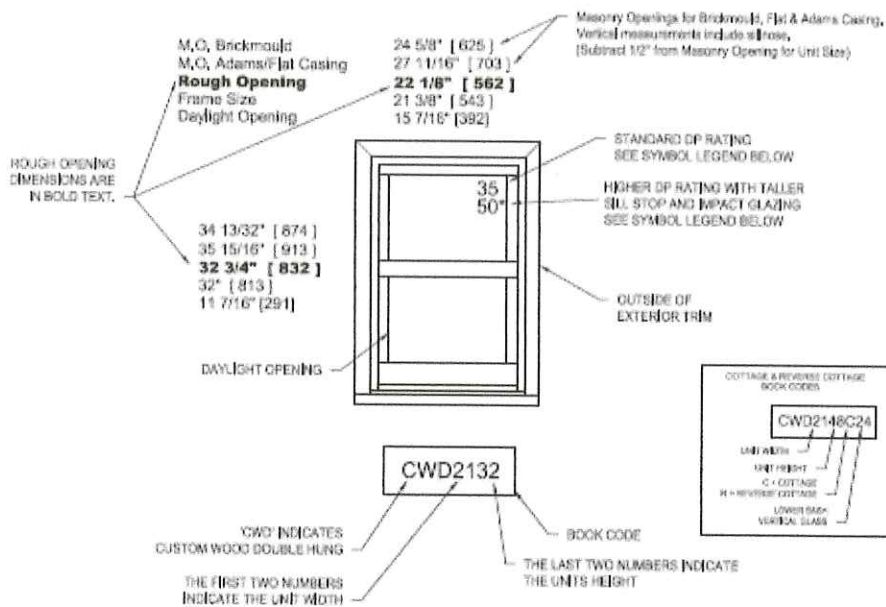
The Custom Double Hung window will allow the sash to be tilted or removed for easy cleaning.



ELEVATION NOTES
DOUBLE-HUNG

ELEVATION DRAWINGS USE A LIMITED NUMBER OF PROJECTED LINES TO PRODUCE A REPRESENTATIVE DRAWING. INTENDED TO BE USED IN A SMALL GRAPHICAL SCALE, ELEVATIONS ARE VIEWED PERPENDICULAR FROM THE EXTERIOR OF THE STRUCTURE. IF MORE DIMENSIONS ARE NEEDED, USE THE SECTION DRAWINGS FOR MORE COMPLETE DEFINITIONS.

DOUBLE HUNG WINDOW



GENERAL WOOD DOUBLE HUNG NOTES

1. ALL UNITS SHOWN ARE AVAILABLE AS OPERATORS ONLY.
2. UNIT ELEVATIONS ARE SHOWN WITH BRICKMOULD & CASING.
3. ALL OPERATING SASH ARE INSTALLED WITH VINYL JAMB LINERS AND OPERATED WITH AN INTERNAL BLOCK AND TACKLE SPRING SYSTEM.
4. DIMENSIONAL VALUES IN BRACKETS ARE MILLIMETER CONVERSIONS.

ELEVATION SYMBOL LEGEND:

- E** UNIT MEETS EGRESS REQUIREMENT FOR IRC CODE, STATE AND LOCAL EGRESS CODES MAY DIFFER, ALWAYS REFER TO LOCAL BUILDING CODES FOR COMPLETE REQUIREMENTS. CHECK WITH LOCAL OFFICIALS TO ENSURE COMPLIANCE BEFORE INSTALLING THE UNIT.
- E1** BASIC UNIT CLEAR OPENING EXCEEDS 20" IN WIDTH, 20" IN HEIGHT & A MINIMUM OF 5.0 SQ. FT. FOR FIRST FLOOR EGRESS.
- T** BASIC UNITS NOT AVAILABLE WITH THERMOPANE GLASS.
- #** NUMBER INDICATES DESIGN PRESSURE (DP) RATING WITH STANDARD GLAZING.
- #H** NUMBER INDICATES HIGHER DP RATING, TALLER SILL STOP AND IMPACT GLAZING.