

45A Hancock

Proposed Work: At front façade raise height of lower level windows to above sidewalk level, install new window sash, frames and trim, eliminate window wells, and continue sidewalk to foundation. The reason for this project is to stop water from entering the unit and the basement from the window wells and instead having the water flow on the sidewalk.



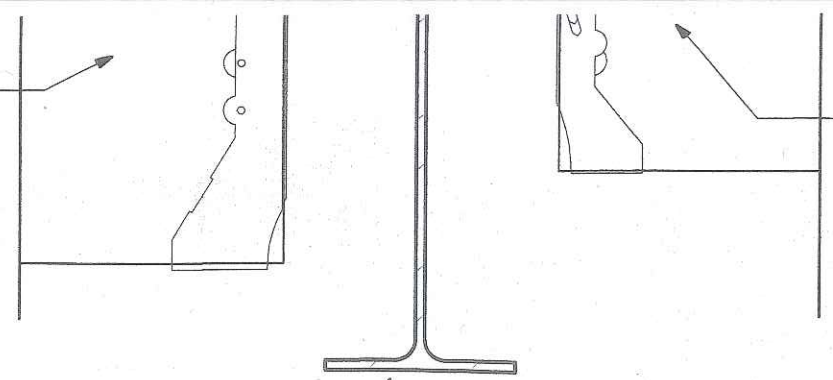
(image from 2016)

NEW 2x10 JOISTS SUPPORTED ON
TOP-FLANGE HANGERS - SEE PLAN

NEW 2x8 JOISTS SUPPORTED
TOP-FLANGE HANGERS - SEE PLAN

NEW W10 BEAM

3 CONNECTION



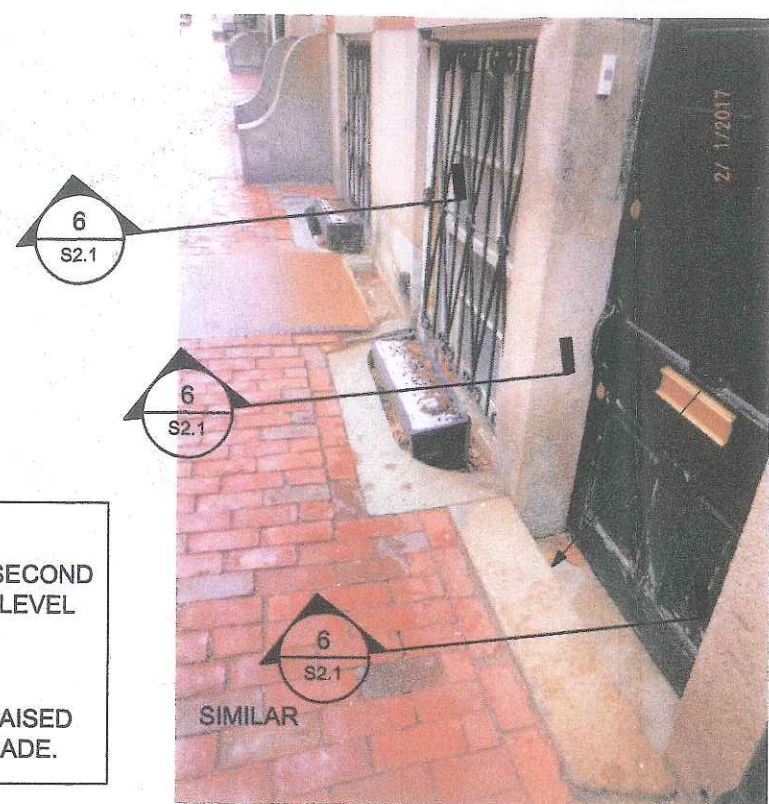
3 TYPICAL CONNECTION BETWEEN ALL NEW JOISTS AND (E) SUB-FLOOR
SCALE: 3" = 1'-0"

1" MINIMUM OR
THICKER MATERIAL.
(NO CRACKS)

1/8" THICK
GROUT EACH LIFT.

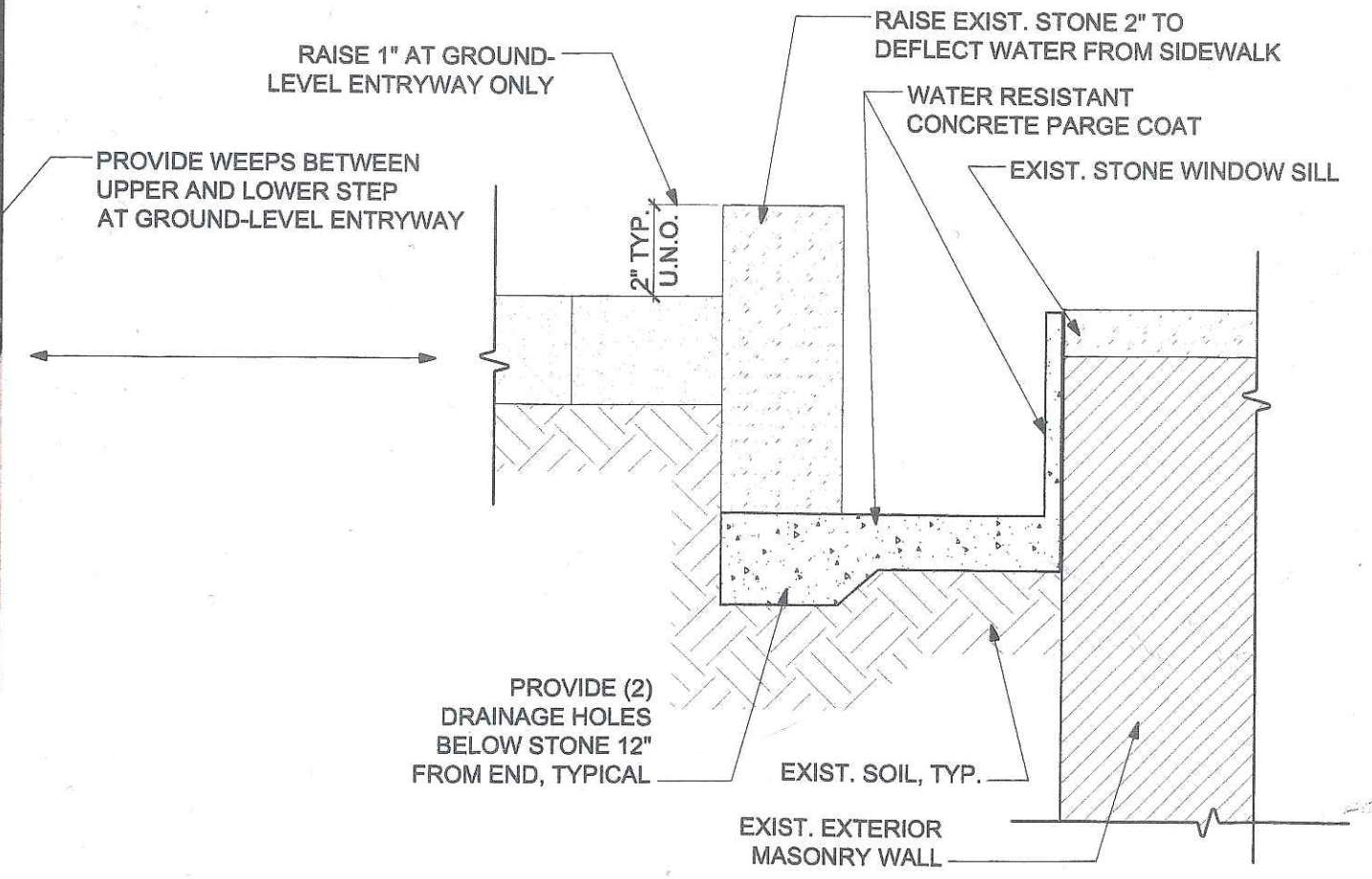
INSTALL PRIOR TO

6

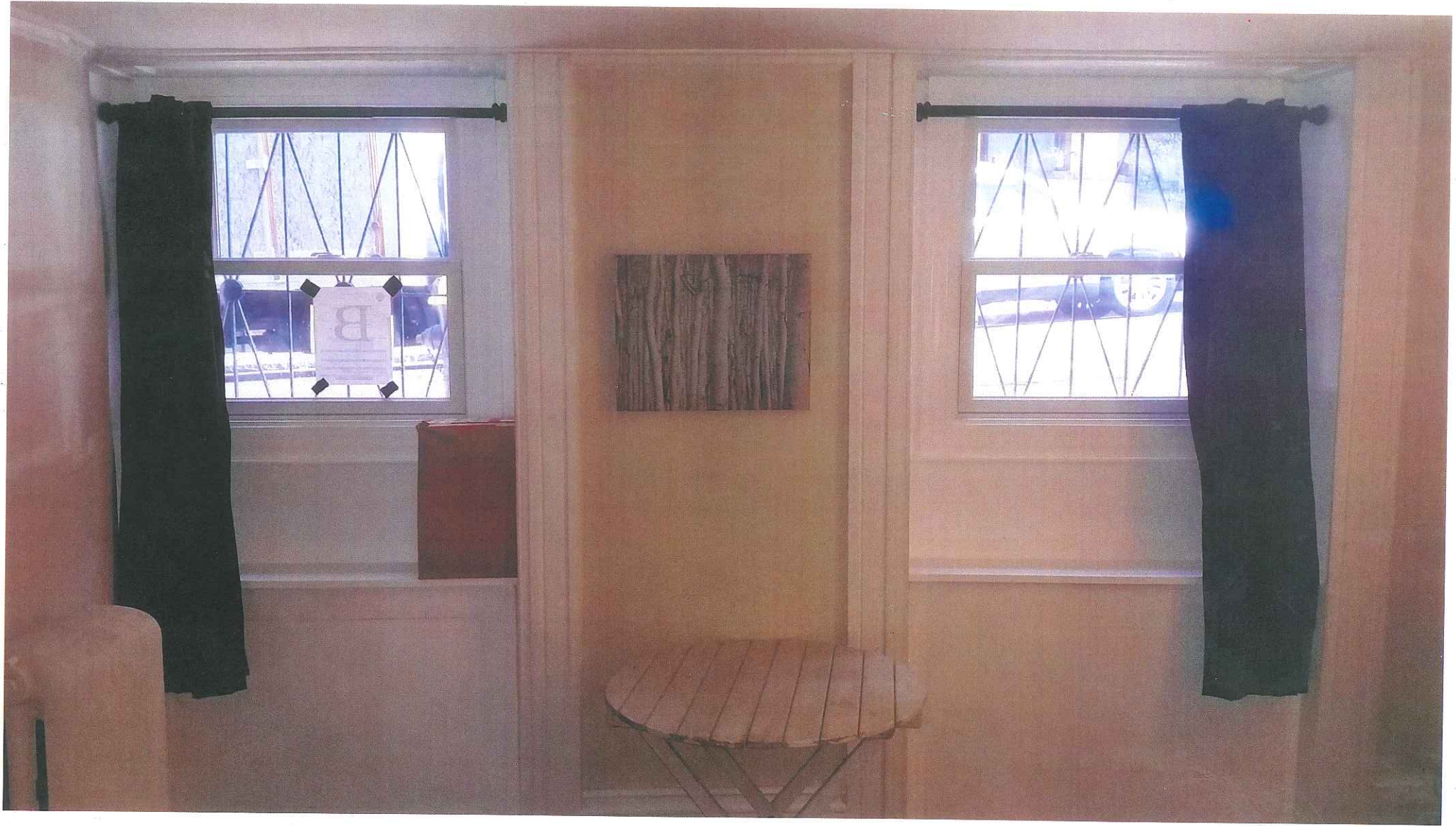


- NOTES:**
1. PROVIDE WEEPS BETWEEN FIRST AND SECOND STEPS AT GRANITE STEPS TO GROUND-LEVEL ENTRYWAY.
 2. GRANITE STEP AT SIDEWALK AT GROUND-LEVEL ENTRYWAY SHALL BE RAISED ONE INCH (1") ABOVE THE SIDEWALK GRADE.

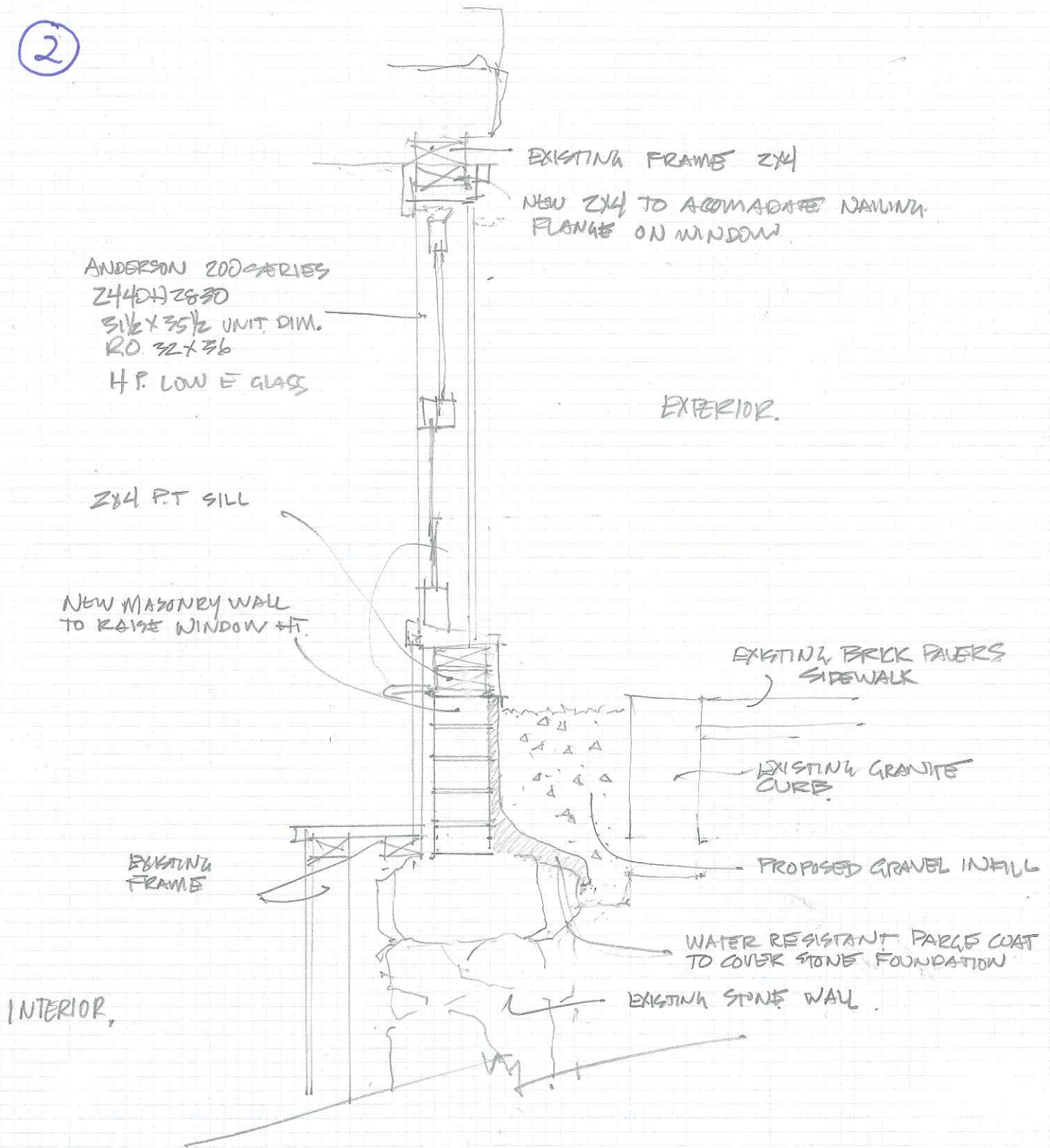
6 FRONT WINDOW WINDOW WELL WATER PROOFING DETAIL
SCALE: 3" = 1'-0"





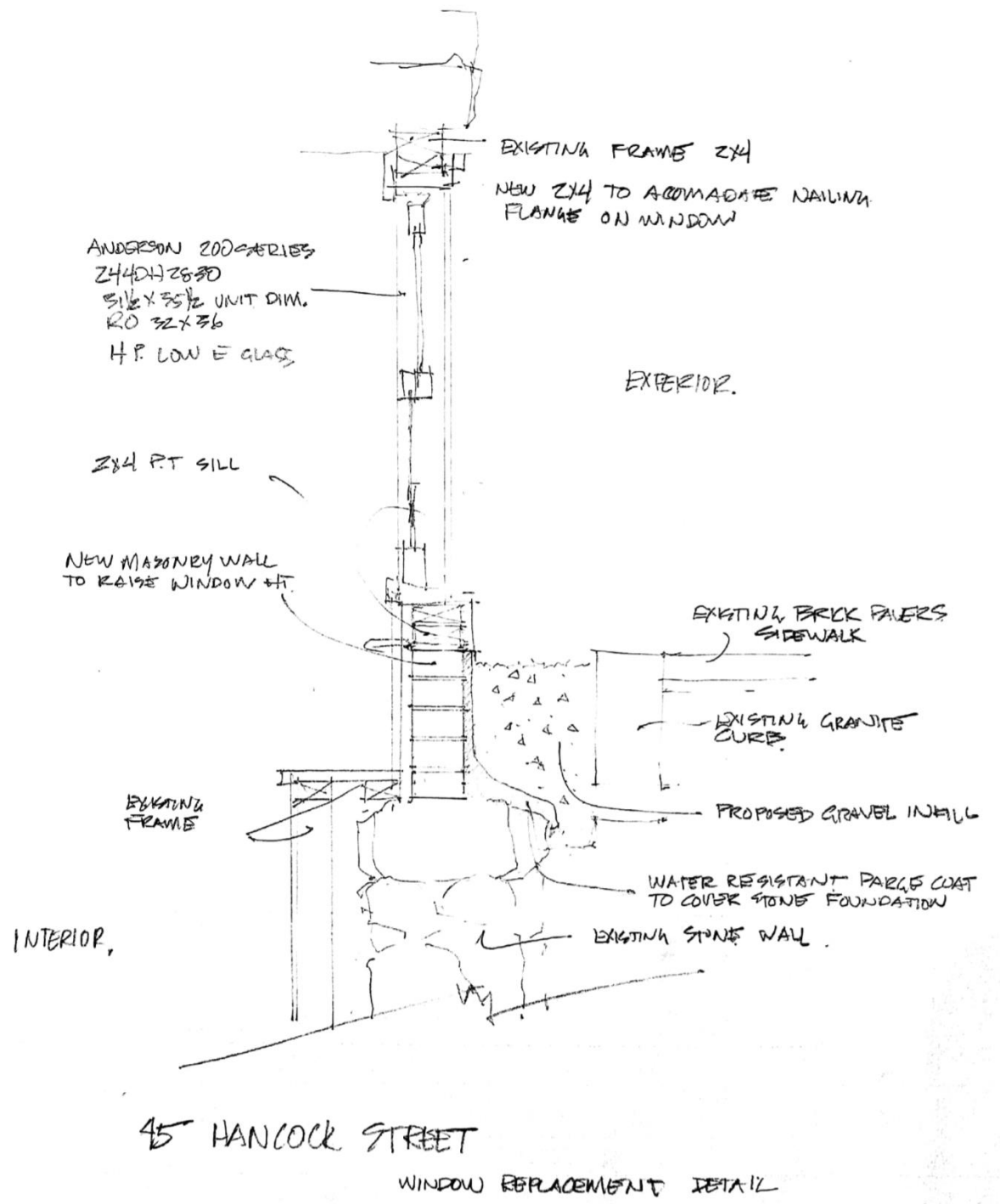


2



45 HANCOCK STREET

WINDOW REPLACEMENT DETAIL



200 SERIES TILT-WASH DOUBLE-HUNG WINDOWS



- Tilt-in feature for easy cleaning
- Available in our most popular sizes
- Choose from unfinished stain-grade Pine or low-maintenance pre-finished White interiors



Andersen® 200 Series Tilt-Wash Double-Hung Windows