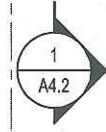


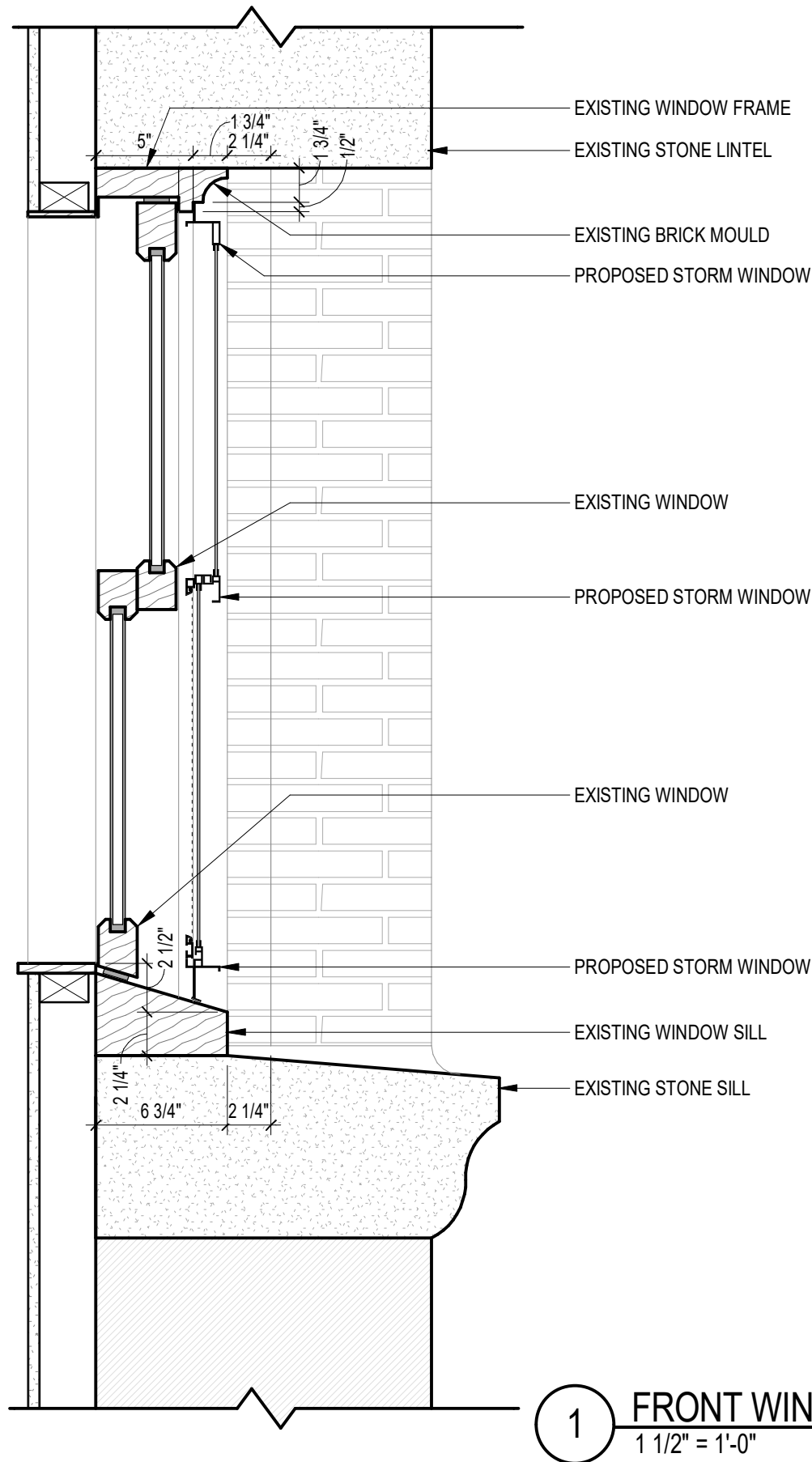
12 Byron Street - Proposed Storm Windows
1-25-19



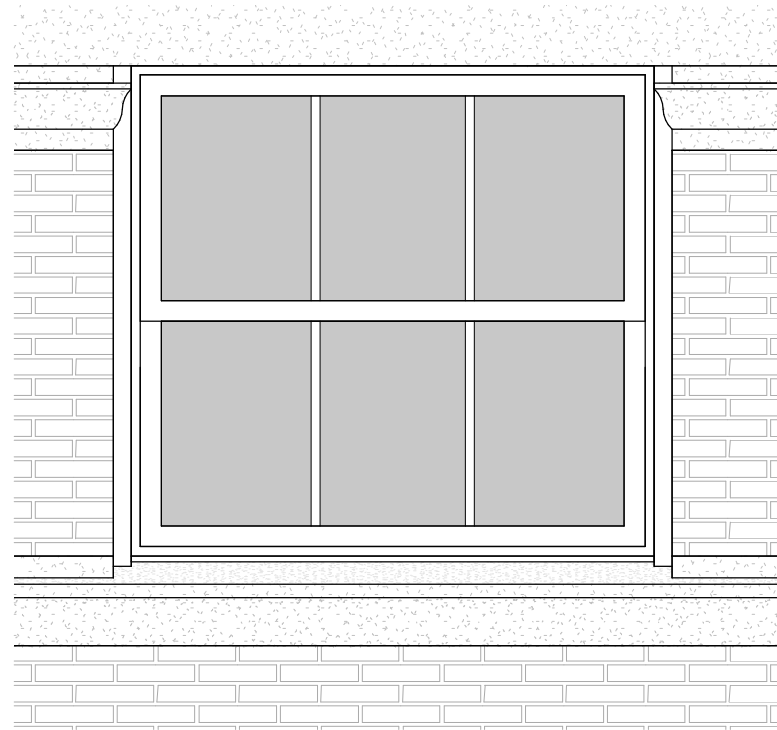
2

SOUTH PROPOSED
1/4" = 1'-0"

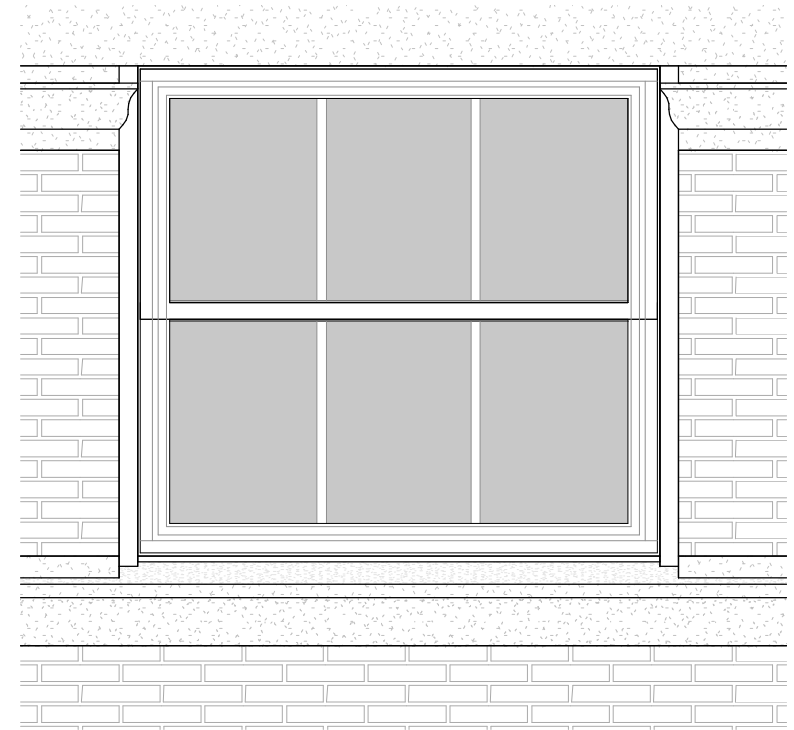
ED



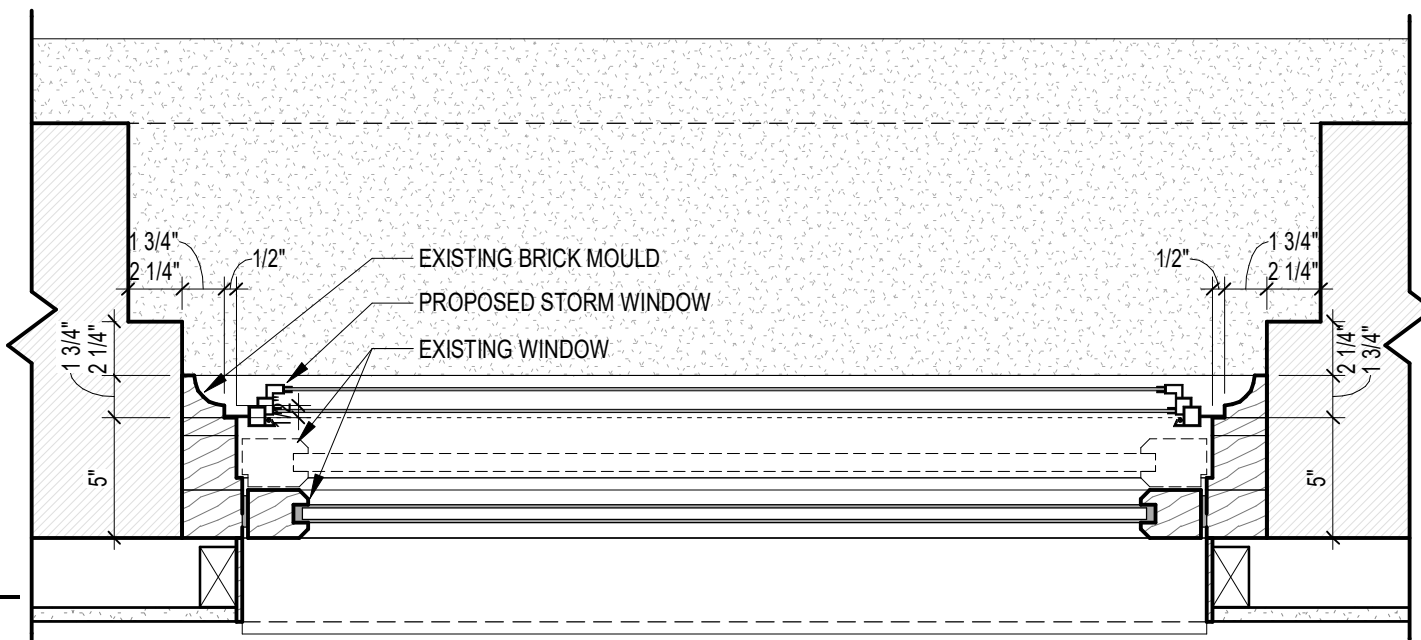
1 FRONT WINDOWS
1 1/2" = 1'-0"

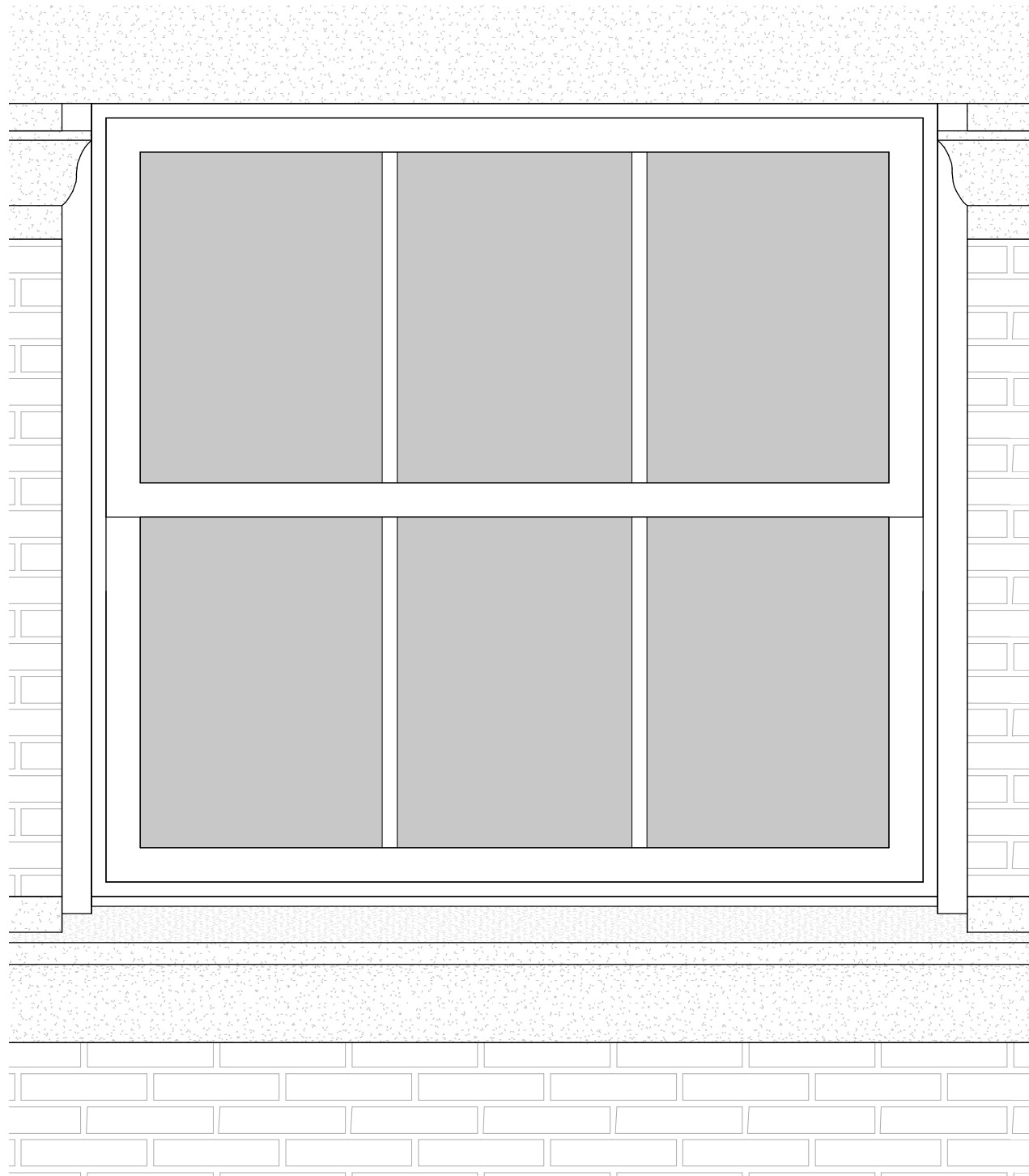


2 TYPICAL WINDOW - EXISTING
3/4" = 1'-0"

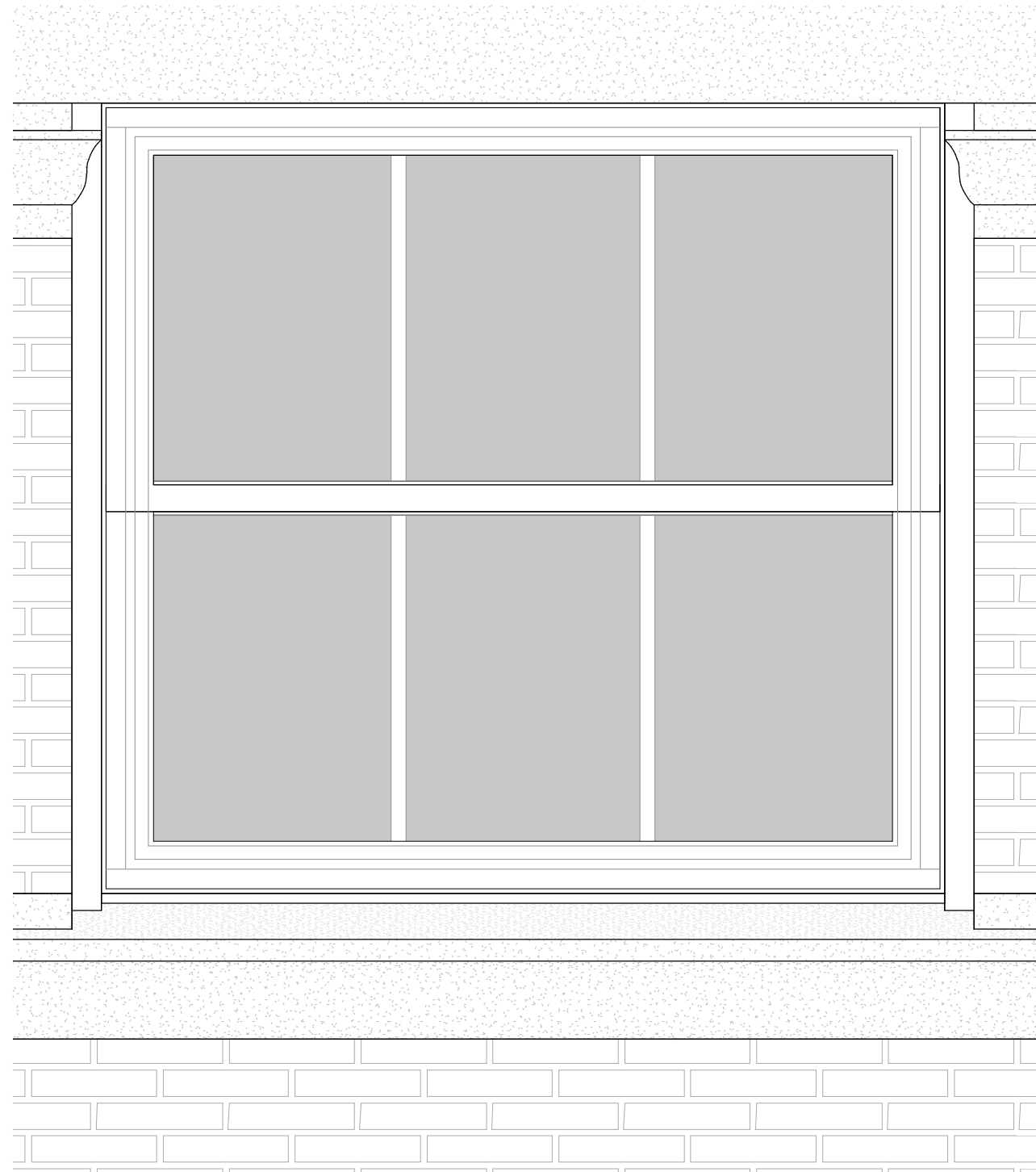


3 TYPICAL WINDOW - PROPOSED
3/4" = 1'-0"

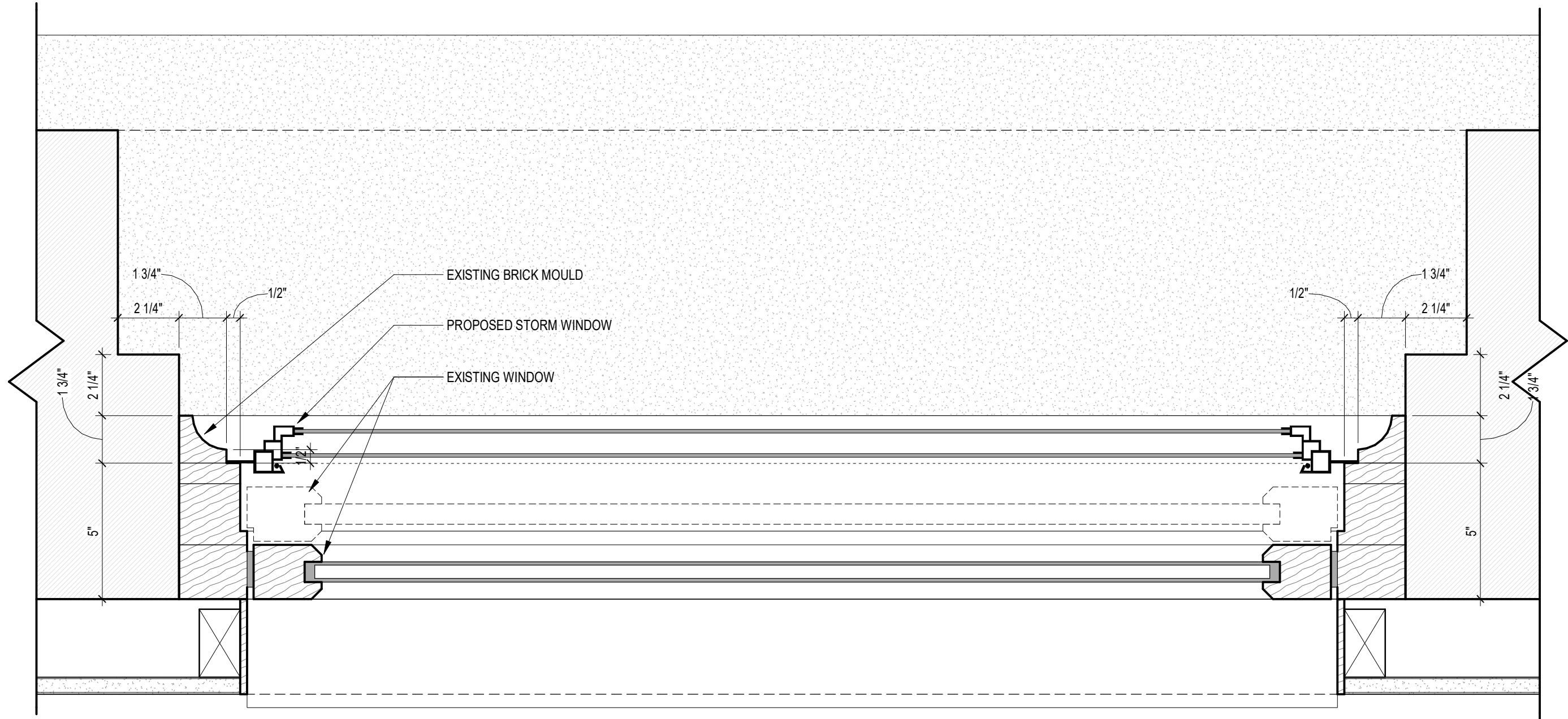




2 TYPICAL WINDOW - EXISTING
1 1/2" = 1'-0"



3 TYPICAL WINDOW - PROPOSED
1 1/2" = 1'-0"



1 STORM WINDOW - PLAN
3" = 1'-0"

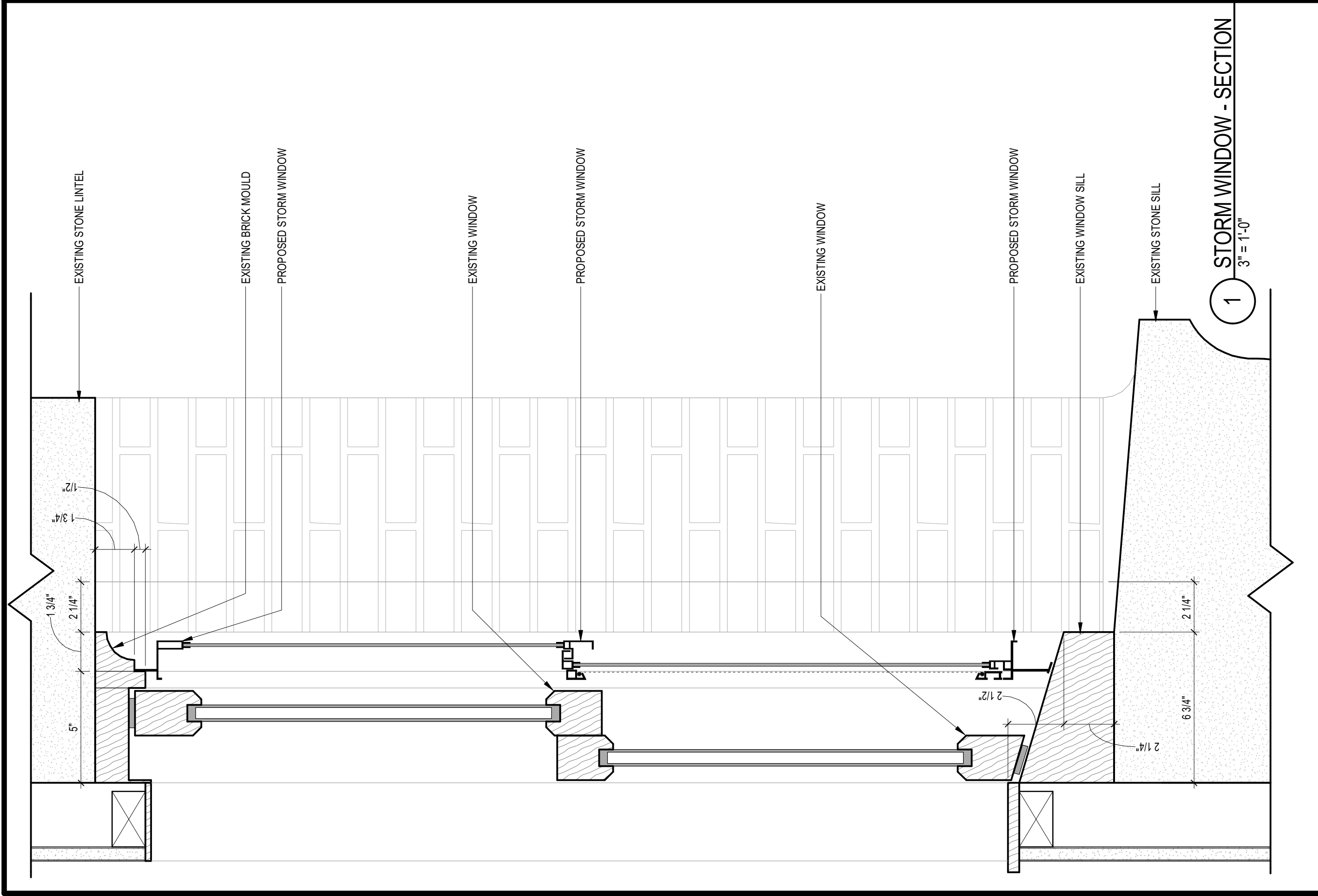
Date: 04/10/17 Drawn By: Author

STORM WINDOWS

Refer To:

12 BYRON STREET
BOSTON,
MASSACHUSETTS 02108

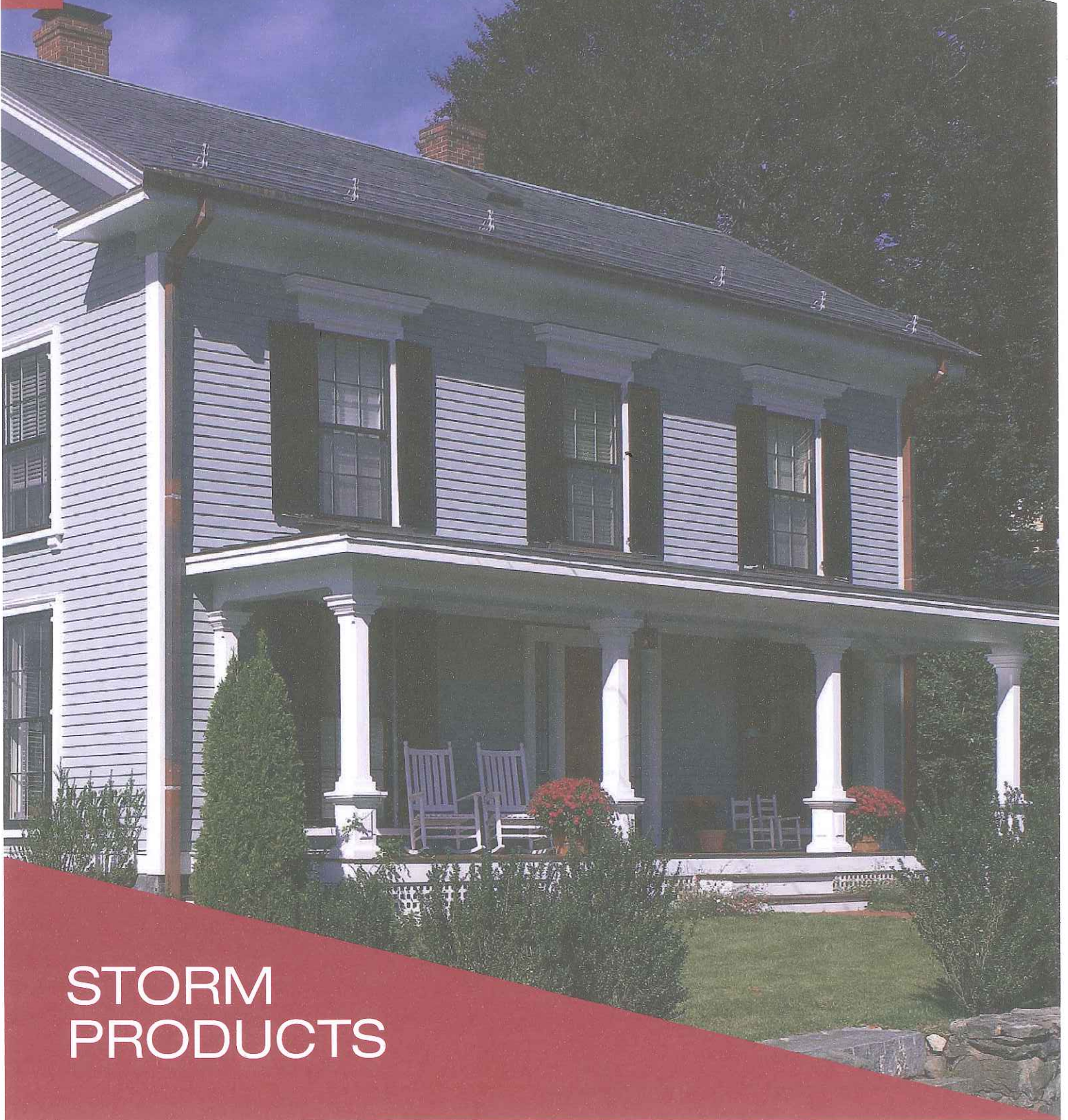
SK13.2



STORM PRODUCTS



HARVEY
BUILDING PRODUCTS



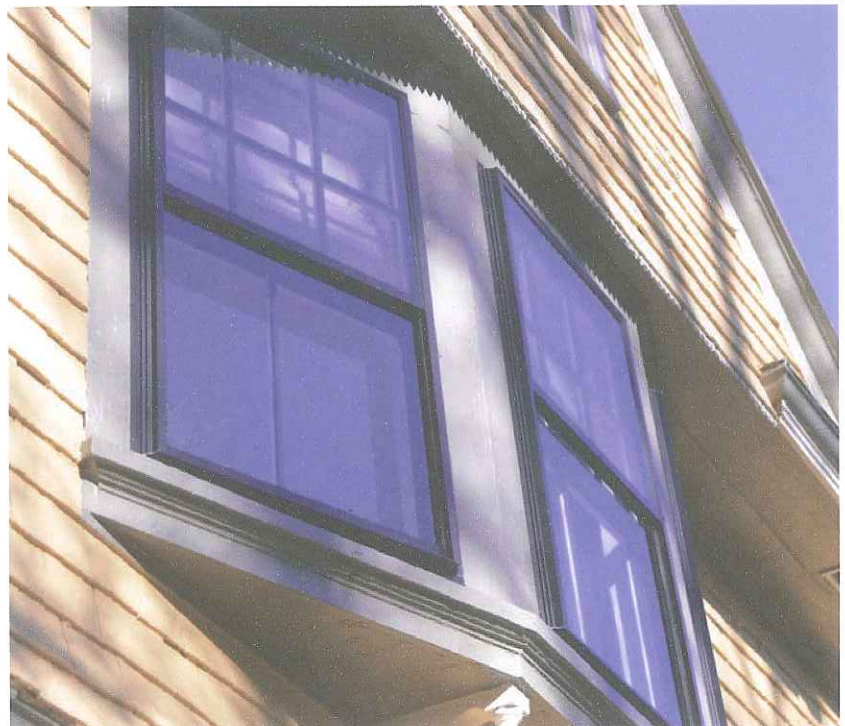
STORM
PRODUCTS

STORM WINDOWS

TRU-CHANNEL

When new replacement windows are not an option, whether for budgetary or historical maintenance reasons, Harvey Tru-Channel aluminum storm windows are an excellent solution. Harvey Tru-Channel provides maximum energy efficiency and is one of the top performing storm windows in the marketplace today. Custom made to fit the exact dimensions of your existing windows, Tru-Channel storm windows are easy to operate, self-contained units that will provide extra insulating value.

- Twice the weatherstripping as ordinary storm windows
- Both sash interlock with a sturdy frame tie bar for maximum wind resistance
- Triple-track "combination" design for self storage of sash and screen and sash tilt-in capability
- Locking non-glare, charcoal-finished fiberglass half screen
- Among the lowest air infiltration rates (.05 CFM/FT) of any storm window
- Approved for Airport Sound Abatement Programs nationally
- Marine glazing seals keep the glass tight and secure in its frame
- Optional steep slope extender available



Proposed windows to have storm windows installed.

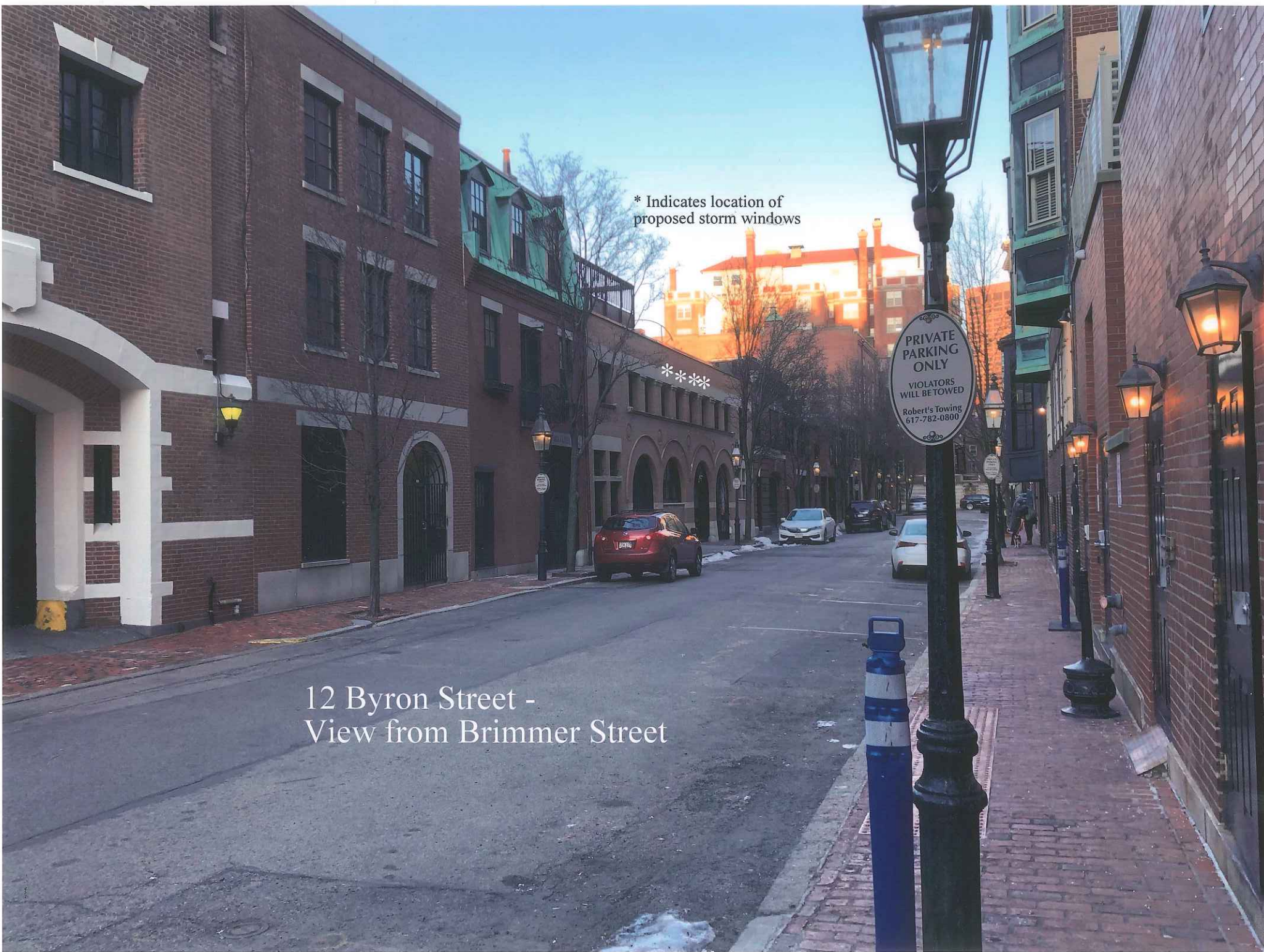


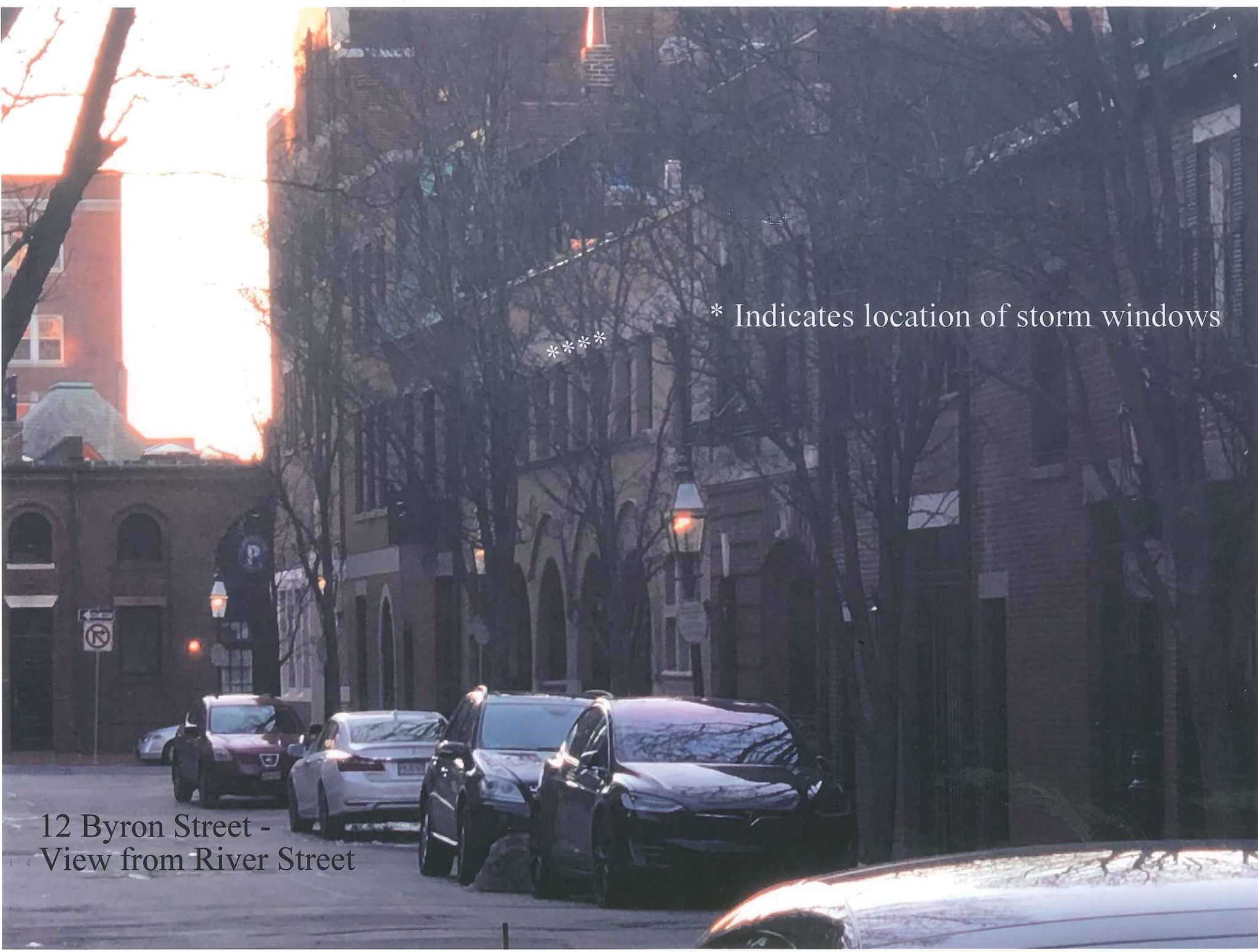
12 Byron Street 1-25-19

* Indicates location of proposed storm windows

12 Byron Street -
View from Brimmer Street

PRIVATE
PARKING
ONLY
VIOLATORS
WILL BE TOWED
Robert's Towing
617-782-0800





* Indicates location of storm windows

12 Byron Street -
View from River Street