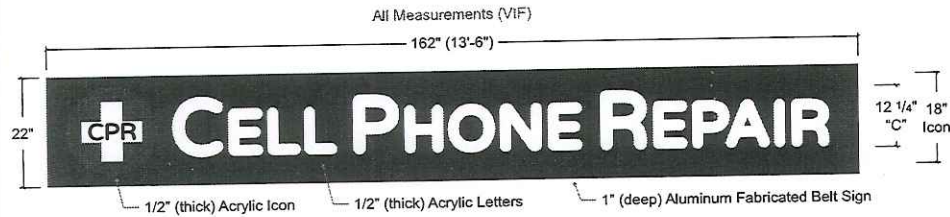
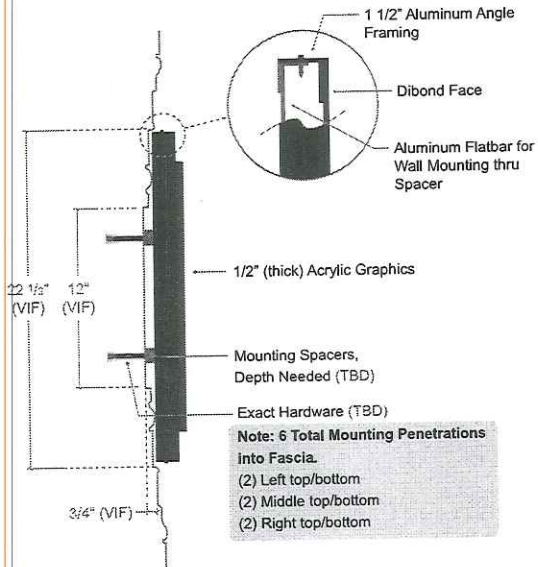


Aluminum Shoebox Style Belt Sign with Dimensional Graphics



E1 Elevation: (Qty-1) #9880 Wall Sign
 Scale: 1/2"=1' Square Footage: 22"x162"= 24.75 sf.



SE Side Elevation
 Scale: 1 1/2"=1'

Description:
 (Qty-1) Non-illuminated shoebox style belt sign with dimensional graphics.
 - 1/2" (thick) acrylic letters and icon mounted flush to sign.
 - Aluminum fabricated shoebox style wall sign with aluminum angle framing.
 - Vertical aluminum flatbar on back for spacer mounting into flat area of fascia.

Logo/Typeface:
 Supplied by customer / arranged as needed

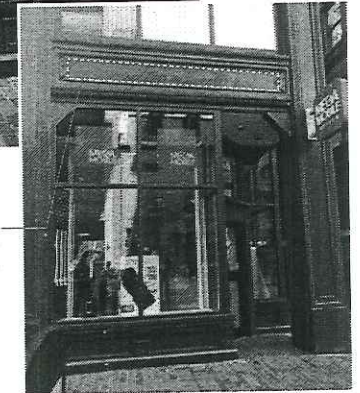
Colors:
 Sign (face & returns): - Aluminum Painted to match Fascia (TBD)
 Letters (face & returns): - 1/2" Acrylic Painted White
 Icon (face & returns): - 1/2" Acrylic Painted to match Existing Red - PMS 1797c
 Icon (face vinyl): - Oracal 070 Black HP vinyl
 - Oracal 010 White HP vinyl

Installation:
 By ViewPoint.

Proposed



Existing



PE Photo Elevation
 Scale: NTS

Flat Area in Middle of Fascia
 12"x120"
 (VIF)

Job: CPR
 Account Manager: Margaret Vosburgh
 Location: 278 Washington St. Boston, MA
 File: CPR_278WashSt-BosMA_WallSign_1.cai

Date: 10.23.18 R.25 D1.75
 Designer: Steven Mannello
 Revisions: 11.21.18 .5
 01.07.19 .25

THIS PROPOSAL DRAWING CONTAINS ORIGINAL ELEMENTS
 CREATED BY VIEWPOINT SIGN AND AWNING. ALL RIGHTS RESERVED.
 UNAUTHORIZED DUPLICATION OR REPRODUCTION IS PROHIBITED.

ViewPoint 1.508.393.8200
 SIGN AND AWNING FAX 1.508.393.4244

Customer Approval: _____
 Acct. Manager Approval: _____
 Production Approval: _____
 TBD/VIF

THIS PROPOSAL DRAWING CONTAINS ORIGINAL ELEMENTS CREATED BY VIEWPOINT SIGN AND AWNING. ALL RIGHTS RESERVED. UNAUTHORIZED DUPLICATION OR REPRODUCTION IS PROHIBITED.

Blade Sign



The blade sign will utilize already existing holes to attach sign onto building. Drill holes through bracket on site to align with holes in cast iron fascia.

E1 Elevation: (Qty-1) #9880 Blade Sign
Scale: 1 1/2"=1' Square Footage: 24"x36"=6sf.

SE Side Elevation
Scale: 1 1/2"=1'

Description:

- (Qty-1) Blade sign, double-sided, non-illuminated.
- Sign panel is fabricated aluminum.
- 2" square aluminum bracket arms with 1/2" mounting plate.
- Graphics are 1/2" (thick) acrylic mounted flush.
- The blade sign will utilize already existing holes to attach sign onto building. Drill holes through bracket on site to align with holes in cast iron fascia.

Logo/Typeface:
Logo supplied by customer.

Colors:

- Sign (face & returns): - Painted to match Brushed Aluminum
- Plate, Brackets: - Painted to match Brushed Aluminum
- Letters (face & returns): - 1/2" Acrylic Painted Black
- Icon (face & returns): - 1/2" Acrylic Painted to match Existing Red - PMS 1797c
- Icon (face vinyl): - Oracal 070 Black HP vinyl
- Oracal 010 White HP vinyl

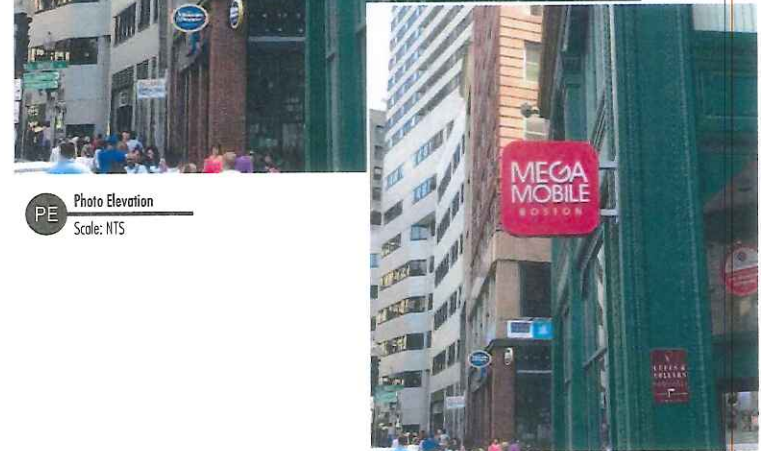
Installation:

By ViewPoint.
The blade sign will utilize already existing holes to attach sign onto building. Drill holes through bracket on site to align with holes in cast iron fascia.

Proposed



Existing



PE Photo Elevation
Scale: NTS

MEGA
MOBILE
BOSTON

MEGA
MOBILE

MEGA
MOBILE





MEGA MOBILE

MEGA MOBILE DESIGN

FLORIDA'S MOST CULTURE

TAMPA BAY PHOTOS

Advertisement for "Florida's Most Culture Tampa Bay Photos" featuring a group of people. The ad is displayed on a black utility box on the sidewalk.



SPRING





MEGA MOBILE

MEGA MOBILE

MEGA MOBILE

LIFETIME





Google



MEGA MOBILE - CPR Cell Phone Repair

