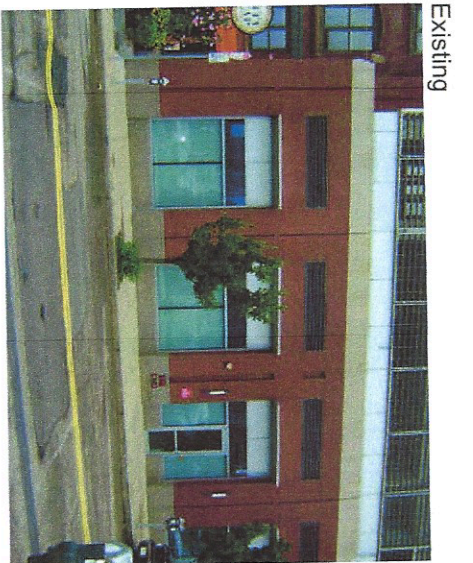


- N01 CTZ.CUST.FLAG Custom 24" Non-Illuminated Fabricated Flag Sign (4 SF)
- NOTE:** Small Uplighting Sconce To Be Added For Illumination
- N02 CTZ.CL.1.W.12 12" Halo Lit Channel Ltrs. - 1'1" oah x 9'9-1/2" oal (10.87 SF)
- N02A CTZ.CUST.BKGD Custom Green Background for White Channel Letters - 30" h x 10' 10-1/4" w
- N03 CTZ.CUST.VIN White Logo with ATM Window Vinyl (Qty 4)
- Note:** 6" of Space Between Bottom of Window and Vinyl
- N04 CTZ.SDV\_GBND Custom 2nd Single Surface Door Vinyl Package
- N05 CTZ.GRN\_TRNSM.VIN Green Transom Vinyl
- N06 CTZ.DOOR.HNDL.8 Citizens Single Door Handle - 8" h
- NOTE:** Handle is Green Square with White Logo

Proposed



Signs Rendered Proportional to the Photo



Existing

**Citizens Bank**

**24-Hour ATM**

White 2nd Surface Vinyl  
PMS 340

White 2nd Surface Vinyl  
Font: CallTraubert - Bold  
Center Justified

White 2nd Surface Vinyl  
Font: CallTraubert - Regular  
PMS 340

24-Hour Service ATM:  
1-800-922-9999  
www.citizensbank.com

Please Remove  
Hats, Sunglasses and Hoods

CTZ.SDV\_GBND  
Scale: NTS



**PHILADELPHIA SIGN**  
BRINGING THE WORLD'S BRANDS TO LIFE

TITLE	DWG BY	DATE
Citizens Bank	JHH	08.06.18
ADDRESS	DWG NUM	SHEET
TBD - Fort Point Seaport 22 Boston Wharf Road Boston, MA 02210	A31755	2

DATE	REVISION
10.15.18	Revised as Noted..... BES
09.20.18	Revised as noted..... BES
09.12.18	Revised as noted..... JIC
08.10.18	Revised as noted..... AFR

THIS IS AN ORIGINAL UNPUBLISHED DRAWING CREATED BY P.S.C.O. IT IS SUBMITTED FOR YOUR PERSONAL USE IN CONJUNCTION WITH A PROJECT BEING PLANNED FOR YOU BY P.S.C.O. IT IS NOT TO BE SHOWN TO ANYONE OUTSIDE YOUR ORGANIZATION NOR IS IT TO BE USED, COPIED, REPRODUCED, OR EXHIBITED IN ANY FASHION.

N07 CTZ CUST VIN White Logo with ATM Window Vinyl (Qty 2)  
 Note: 6" of Space Between Bottom of Window and Vinyl. White Transom Above Window to be Painted by Others.

Proposed



Signs Rendered Proportional to the Photo

*Left Elevation*



Existing



**PHILADELPHIASIGN**  
 BRINGING THE WORLD'S BRANDS TO LIFE

TITLE	DWG BY	DATE	REVISION	BY
Citizens Bank	JHH	08.06.18	10.15.18 Revised as Noted.....	BES
			09.20.18 Revised as noted.....	BES
			09.12.18 Revised as noted.....	JC
			08.10.18 Revised as noted.....	AFR

THIS IS AN ORIGINAL UNPUBLISHED DRAWING CREATED BY P.S.C.O. IT IS SUBMITTED FOR YOUR PERSONAL USE IN CONNECTION WITH A PROJECT BEING PLANNED FOR YOU BY P.S.C.O. IT IS NOT TO BE SHOWN TO ANYONE OUTSIDE YOUR ORGANIZATION NOR IS IT TO BE USED, COPIED, REPRODUCED, OR EXHIBITED IN ANY FASHION.