





RATH
VENT

D

1/4" = 6"

25 Phillips St.

Existing Rear Elevation

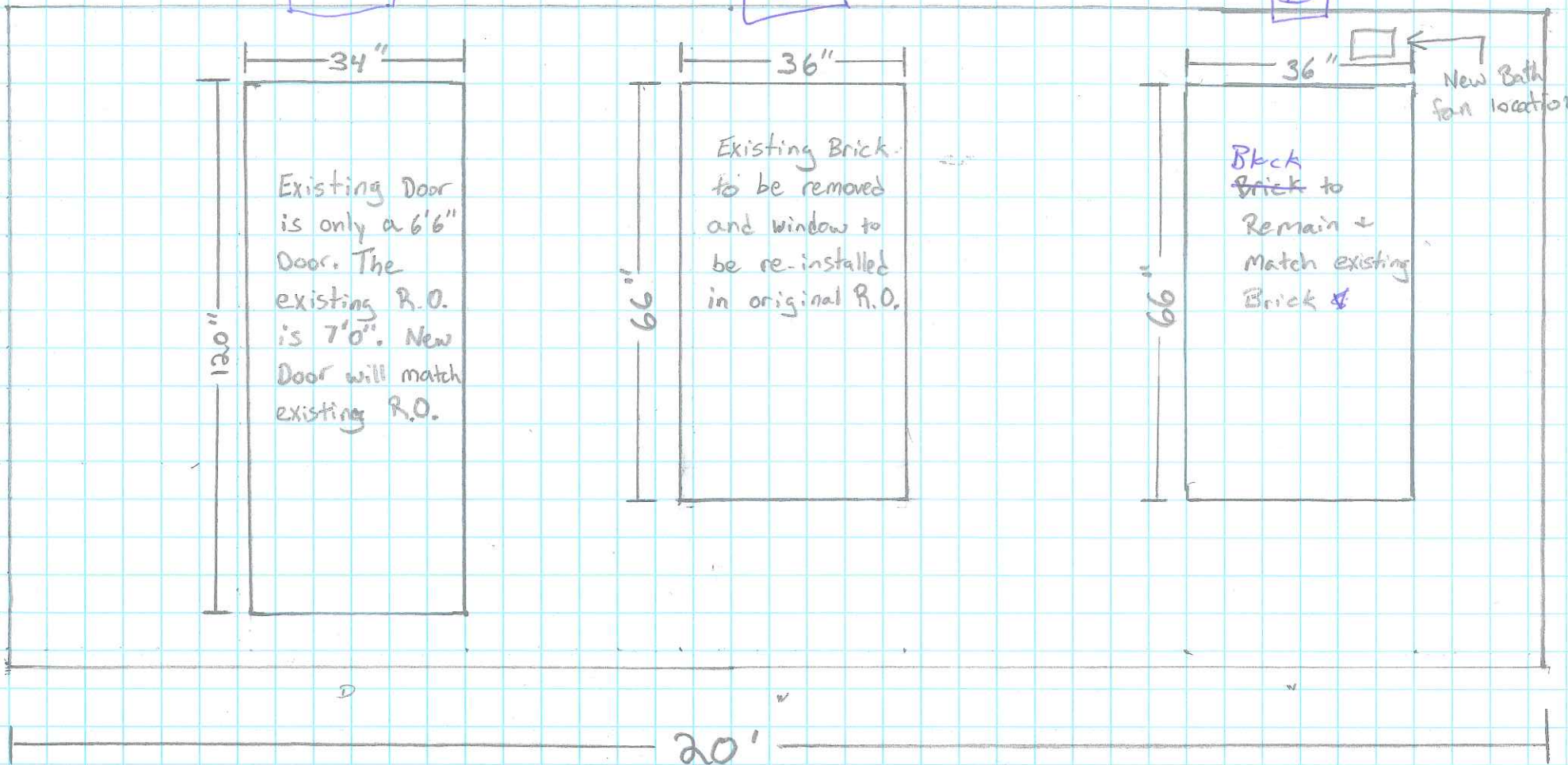
4/9/19

Ted Teran

F

E

D





Home > Heating & Cooling > Fans & Ventilation > Vents & Hoods > Wall Vents > Broan Nutone Wall Cap For 3 & 4 In. Duct

Broan Nutone Round Wall Cap For 3 & 4 in. Duct Black Steel

N885BL



MATERIAL:

Steel

SPECIFICATIONS

Color Finish Black

Diameter 4 in

Duct Shape Round

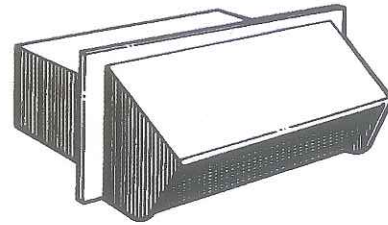
Material Steel

\$22.99 EACH
(Pricing is for Steel)

QUANTITY

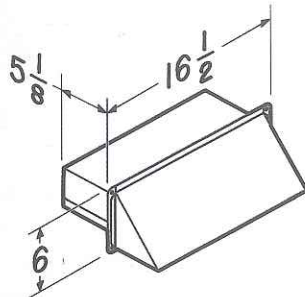
1

WALL CAPS



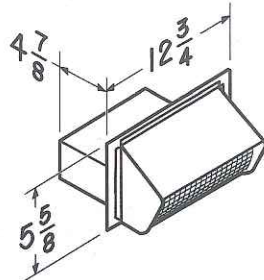
Model WC638

- For 3 1/4" x 14" duct
- Spring-loaded backdraft damper and bird screen
- 26 GA CRCQ Steel, black finish



Model 639

- For 3 1/4" x 10" duct
- Spring-loaded backdraft damper and bird screen
- 24 GA CRCQ Steel, black electrically-bonded epoxy finish

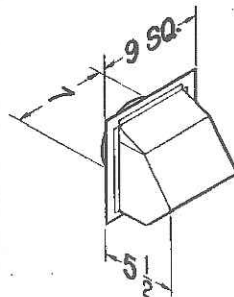


Model 649

- Same features as Model 639
- .025 Aluminum - natural finish

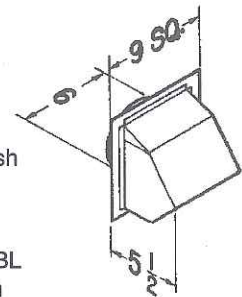
Model 647

- For 7" round duct
- Spring-loaded backdraft damper and bird screen
- .025 Aluminum - natural finish



Model 843BL

- For 6" round duct
- Spring-loaded backdraft damper and bird screen
- 22 GA CRCQ Steel, black electrically-bonded epoxy finish
- Attachment collar 1 1/4" long



Model 641

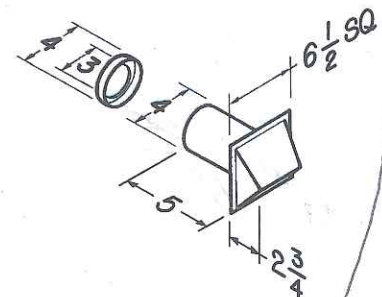
- Same features as Model 843BL
- .025 Aluminum - natural finish

Model 641FA

- Same features as Model 641
- Without backdraft damper
- Intended for make-up air inlet applications

Model 885BL

- For 3" or 4" round duct (4" to 3" transition included)
- Spring-loaded backdraft damper and bird screen
- 24 GA CRCQ Steel, black electrically-bonded epoxy finish



Broan-NuTone LLC Hartford, Wisconsin www.broan.com 800-558-1711

REFERENCE	QTY.	REMARKS	Project
			26 Phillips St.
			Location
			Architect
			Engineer
			Contractor
			Submitted by
			Date