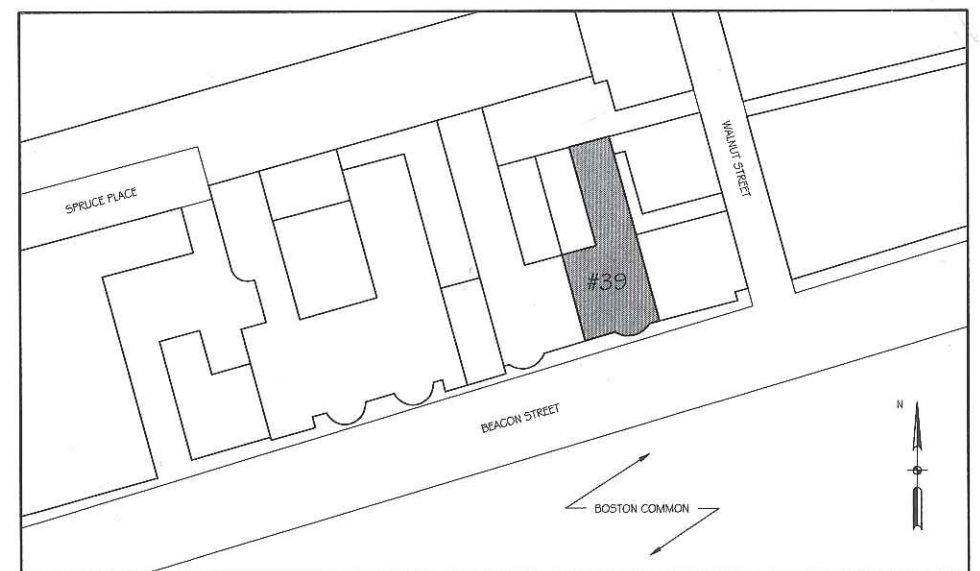


FIRST FLOOR PLAN
 $\frac{1}{4}'' = 1'-0''$



BLOCK PLAN

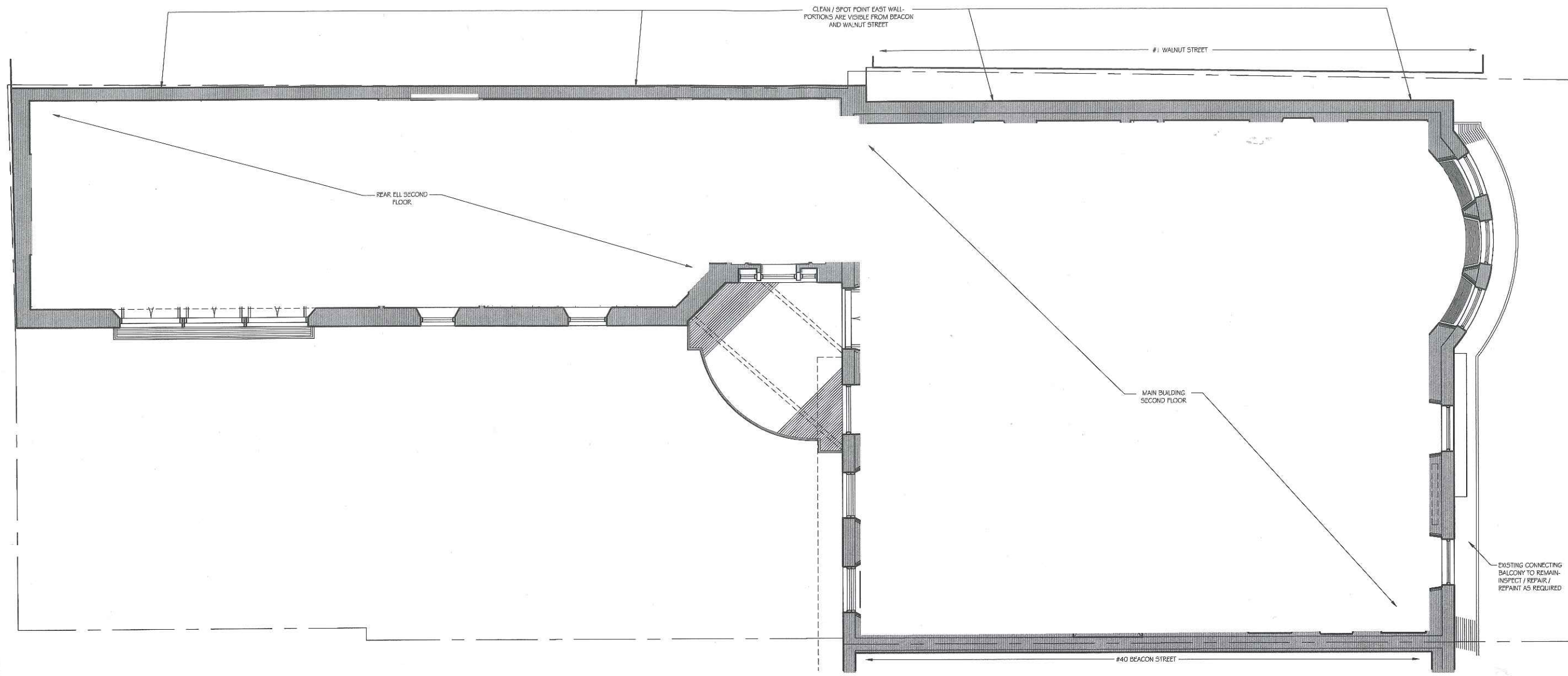
46 Waltham Street, Suite 3A
 Boston, MA 02118
 Phone 617-956-9992
 Fax 617-956-9993

G | GRASSI DESIGN GROUP
 B | GRASSI INTERIORS

JOB NO.: 1809
 SCALE: 1/4" = 1'-0"
 DATE: 04.19.19
 REVISED

ROBERTS RESIDENCE
 39 BEACON STREET BOSTON, MA

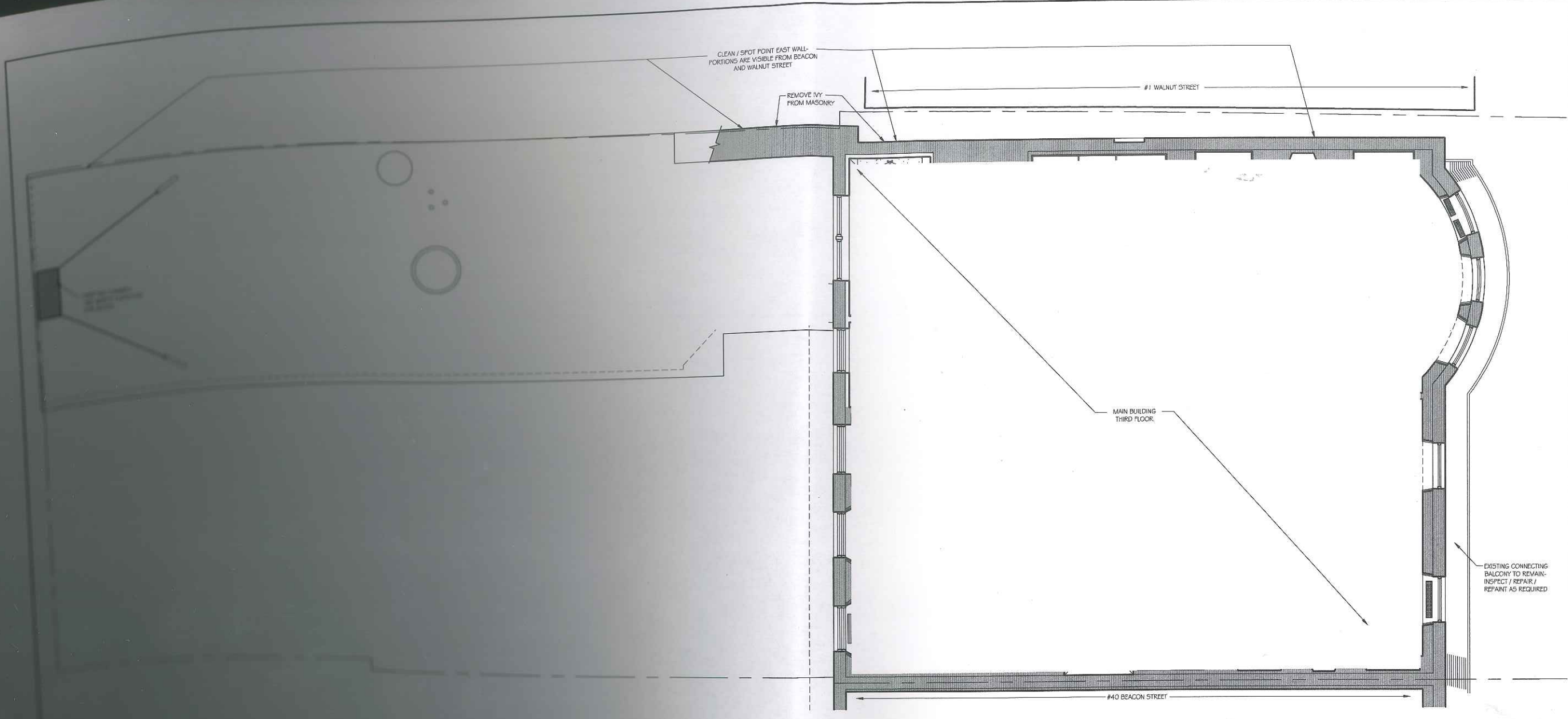
FIRST FLOOR PLAN
 AND BLOCK PLAN



SECOND FLOOR PLAN
 1/4" = 1'-0"



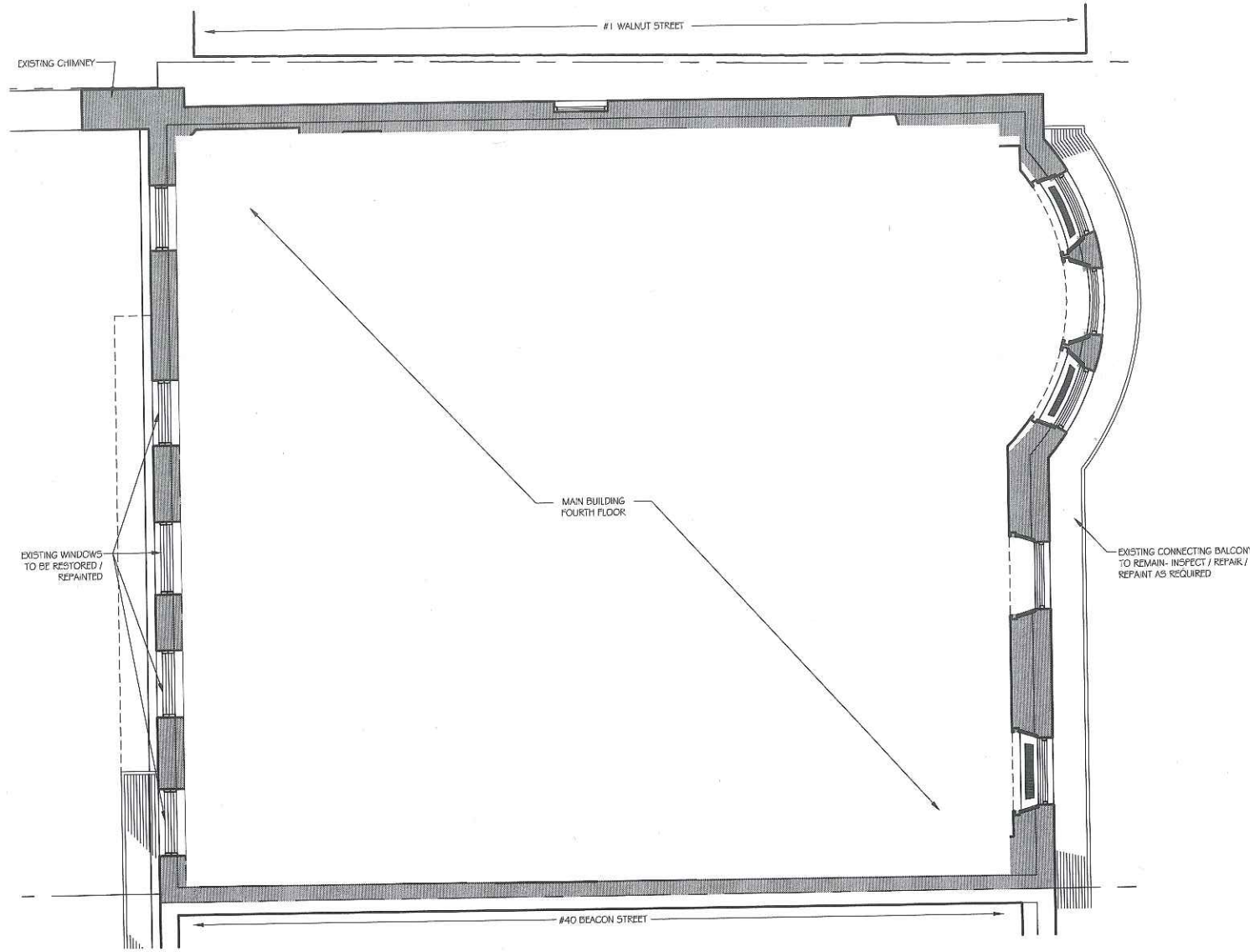
2	SECOND FLOOR PLAN		ROBERTS RESIDENCE 39 BEACON STREET BOSTON, MA	JOB NO.: 1809 SCALE: 1/4" = 1'-0" DATE: 04.19.13	GID GRASSI DESIGN GROUP BEAUCHEMIN GRASSI INTERIORS	46 Waltham Street, Suite 3A Boston, MA 02118 Phone 617-956-9992 Fax 917-956-9993
	REVISIONS					



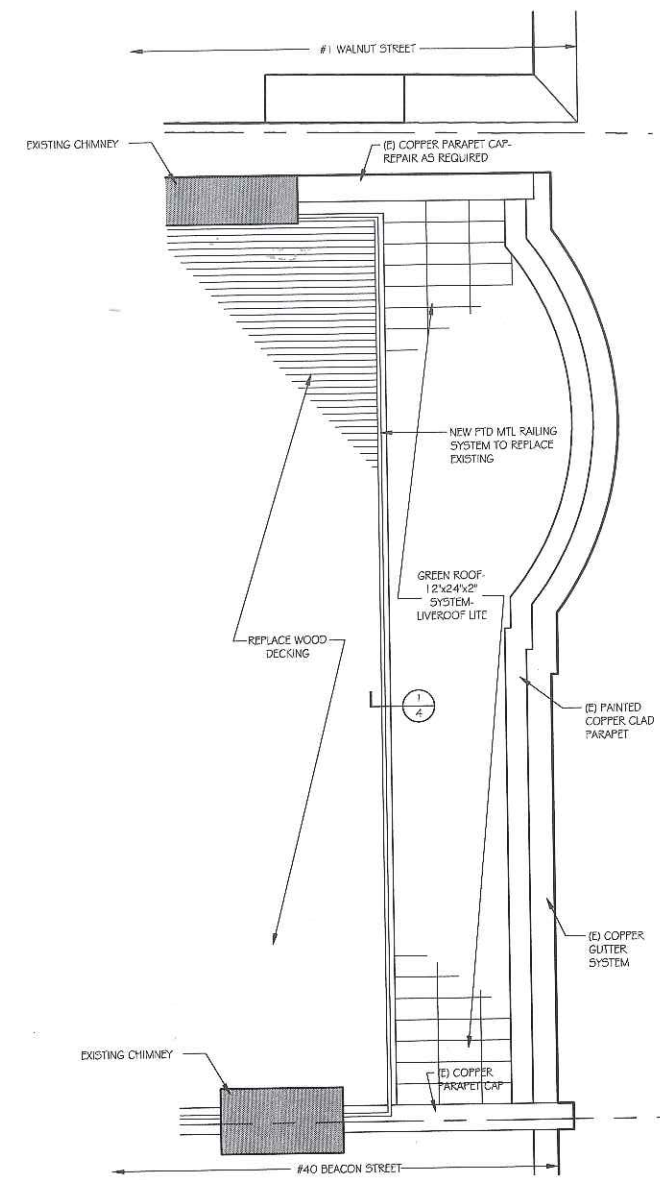
THIRD FLOOR PLAN
 $\frac{1}{4}'' = 1'-0''$



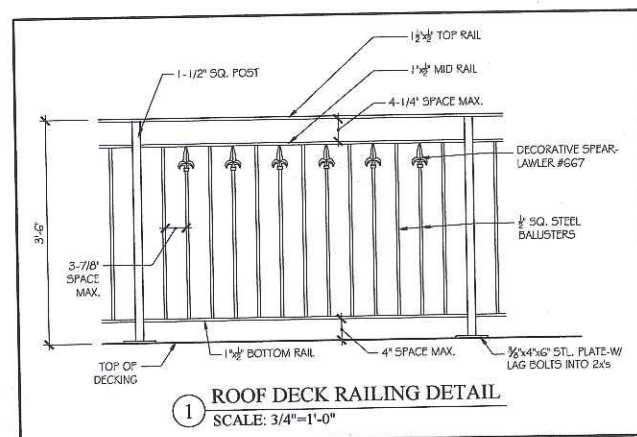
3	THIRD FLOOR PLAN	ROBERTS RESIDENCE 39 BEACON STREET BOSTON, MA	JOB NO: 1809 SCALE: 1/4" = 1'-0" DATE: 04.19.13 REVISED	GID BGC	GRASSI DESIGN GROUP BEAUCHEMIN GRASSI INTERIORS	46 Walham Street, Suite 3A Boston, MA 02118 Phone 617-956-9992 Fax 917-956-9993
----------	-------------------------	---	--	--------------------------	---	--



FOURTH FLOOR PLAN
 $\frac{1}{4}'' = 1'-0''$



PARTIAL ROOF PLAN
 $\frac{1}{4}'' = 1'-0''$



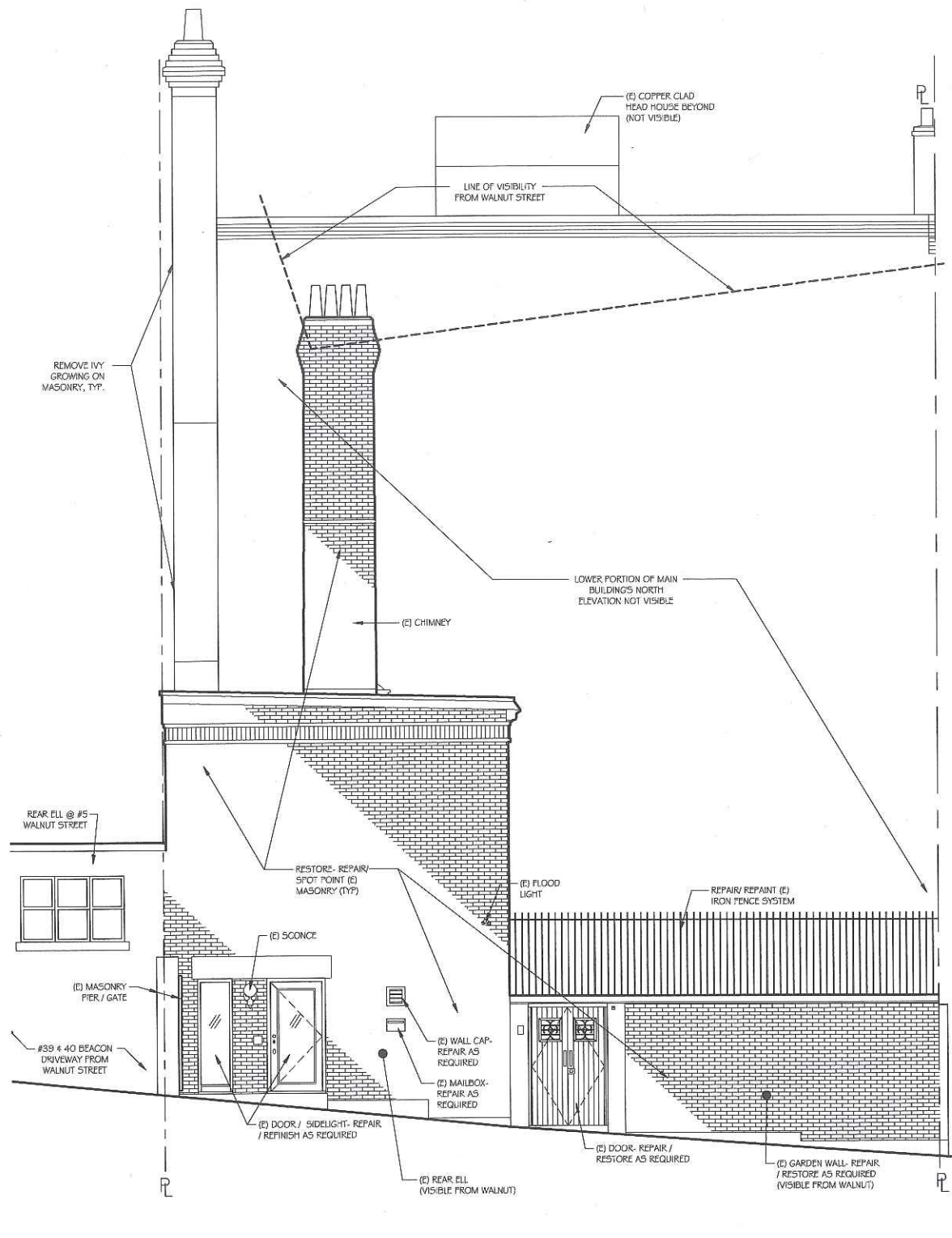
46 Waltham Street, Suite 3A
 Boston, MA 02118
 Phone 617.956.9992
 Fax 917.956.9993

GRASSI DESIGN GROUP
 BEAUCHEPAIN GRASSI INTERIORS

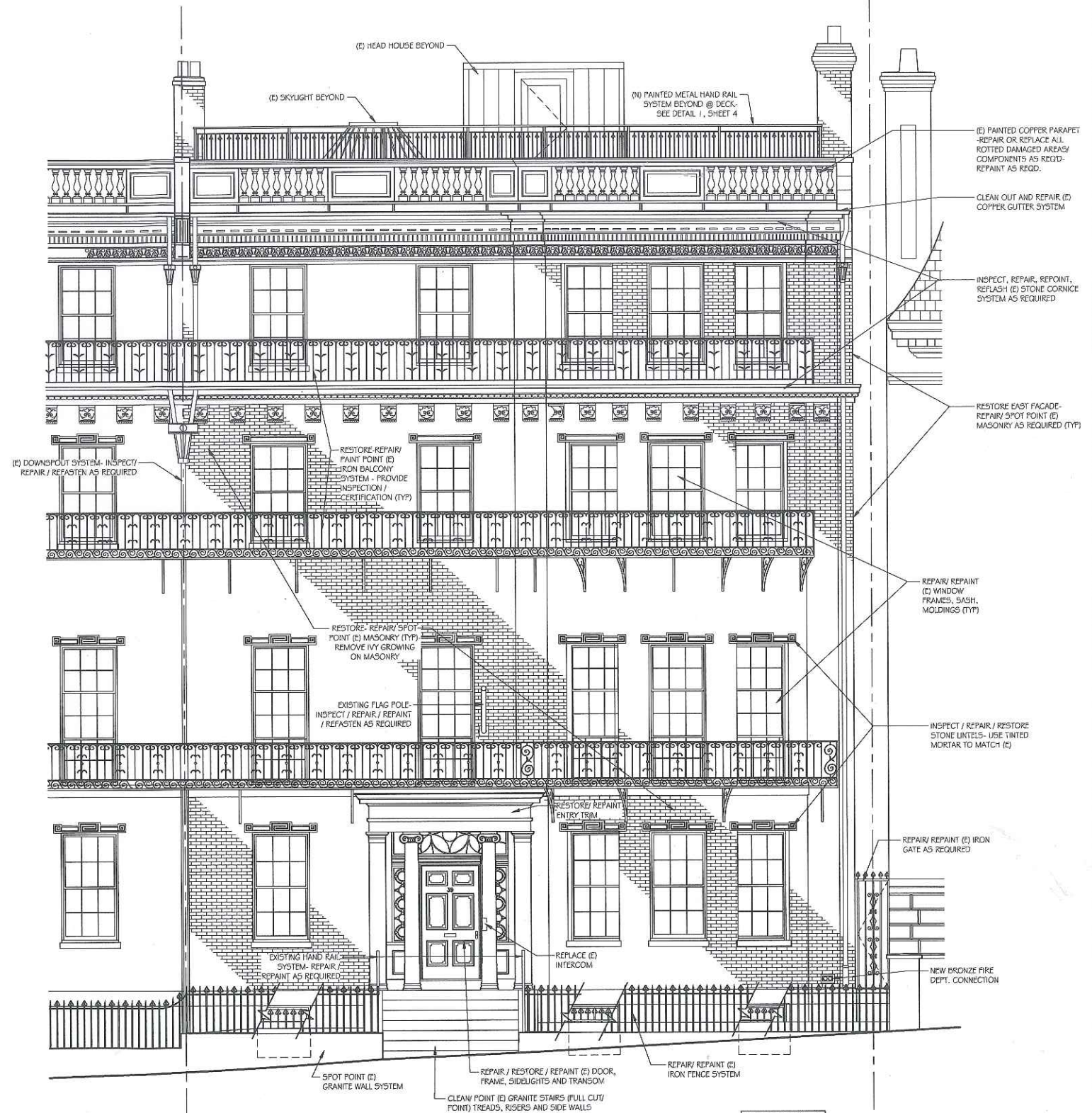
JOB NO: 1609
 SCALE: AS NOTED
 DATE: 04.19.13
 REVISED

ROBERTS RESIDENCE
 39 BEACON STREET BOSTON, MA

FOURTH FLOOR PLAN,
 PARTIAL ROOF PLAN
 AND RAILING DETAIL
 4



NORTH ELEVATION @ REAR ELL
SCALE: 1/4" = 1'-0"



SOUTH BUILDING ELEVATION
SCALE: 1/4" = 1'-0"

NOTE: NO CHANGE TO PAINT COLORS- ALL TO MATCH EXISTING

46 Walham Street, Suite 3A
Boston, MA 02118
Phone 617-556-9992
Fax 617-556-9993

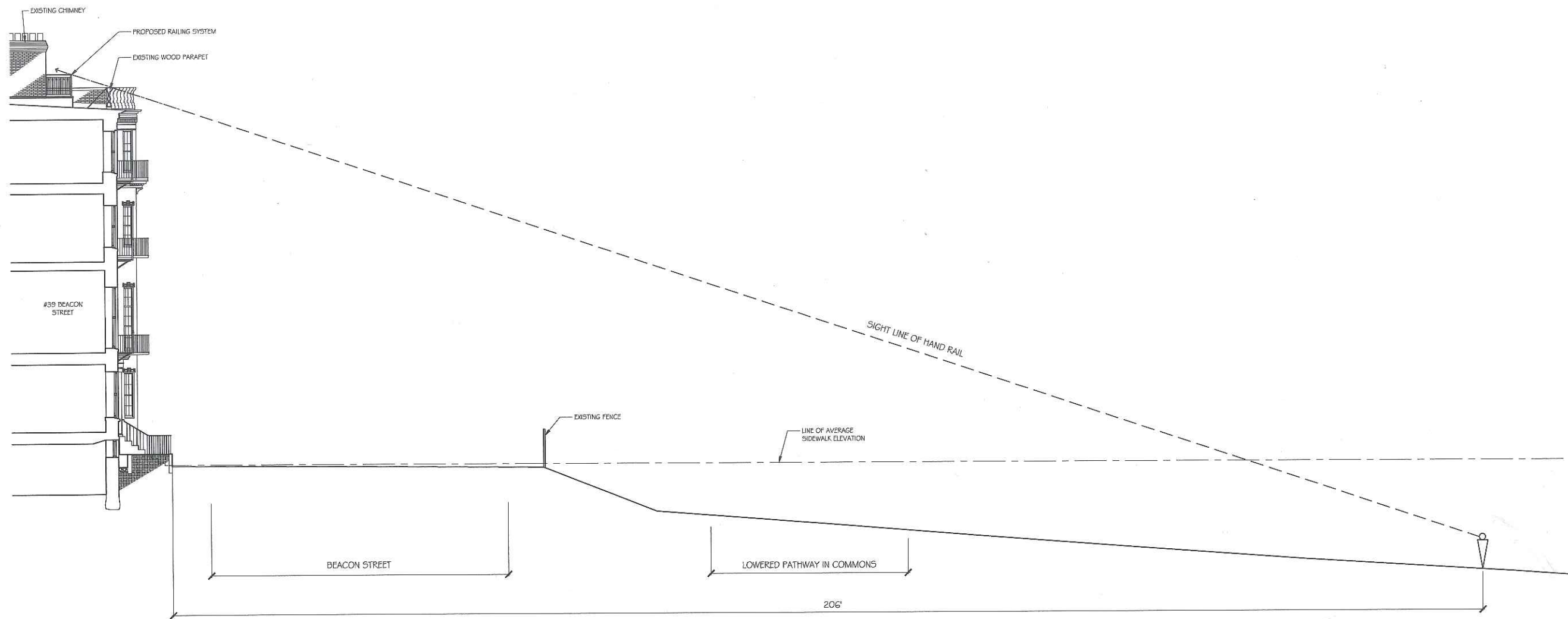
GRASSI DESIGN GROUP
BEAUCHEMIN GRASSI INTERIORS

JOB NO. 1809
SCALE: 1/4"=1'-0"
DATE: 04.19.19
REVISED

ROBERTS RESIDENCE
#39 BEACON STREET, BOSTON MA

NORTH AND SOUTH
BUILDING ELEVATIONS

5



BEACON STREET SIGHT LINE
 SCALE: 1/8" = 1'-0"

46 Waltham Street, Suite 3A
 Boston, MA 02118
 Phone 617.956.9992
 Fax 617.956.9993

GRASSI DESIGN GROUP
 BEAUCHEMIN GRASSI INTERIORS

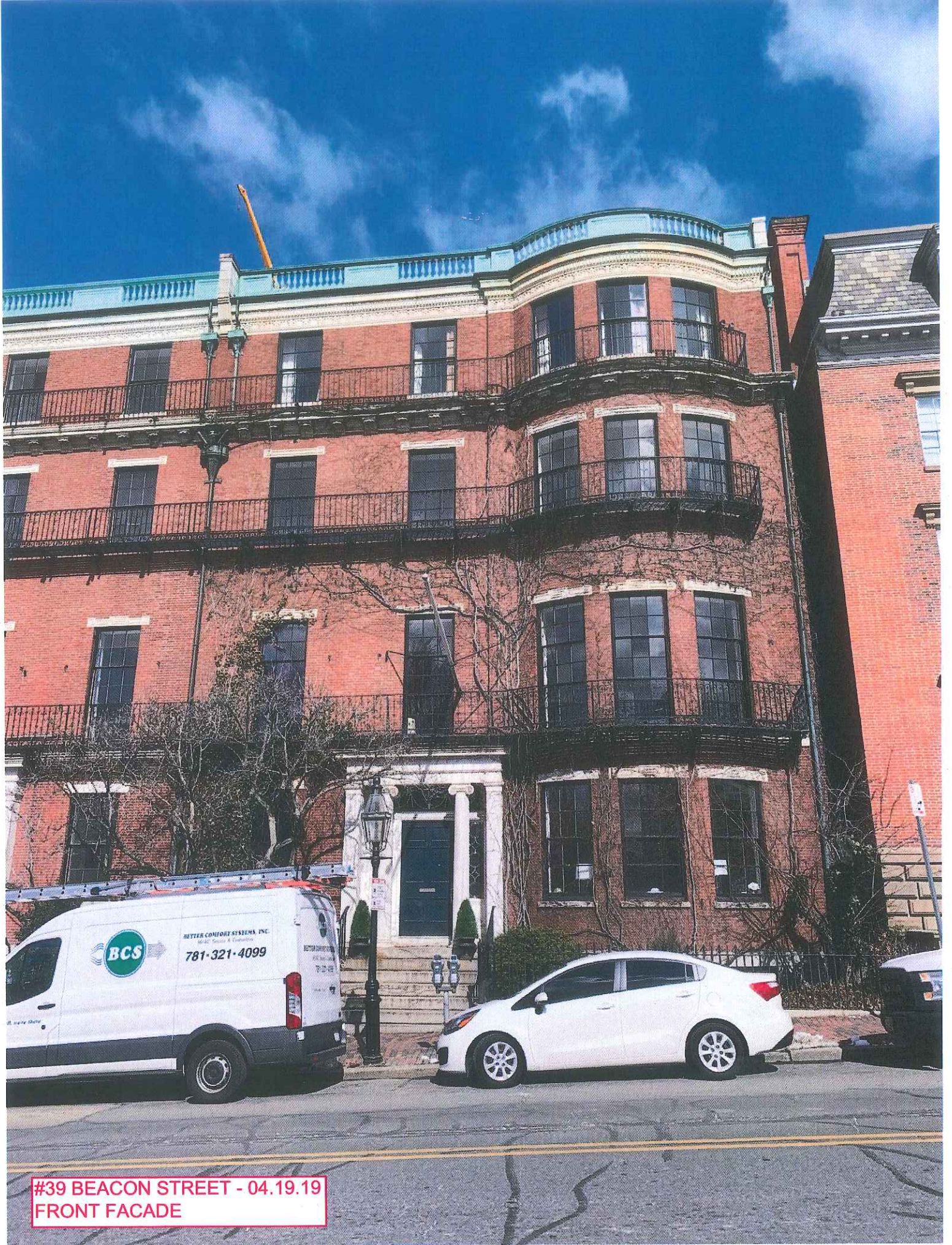


JOB NO: 1809
 SCALE: 1/8" = 1'-0"
 DATE: 04.19.19
 REVISED

ROBERTS RESIDENCE
 #39 BEACON STREET, BOSTON MA

BEACON STREET SIGHT LINE

6



#39 BEACON STREET - 04.19.19
FRONT FACADE



#39 BEACON STREET - 04.19.19
SOUTH & EAST FACADES

NORTHERN LIGHTS
PAINTING COMPANY
1781 483-3754 www.northernlights.com



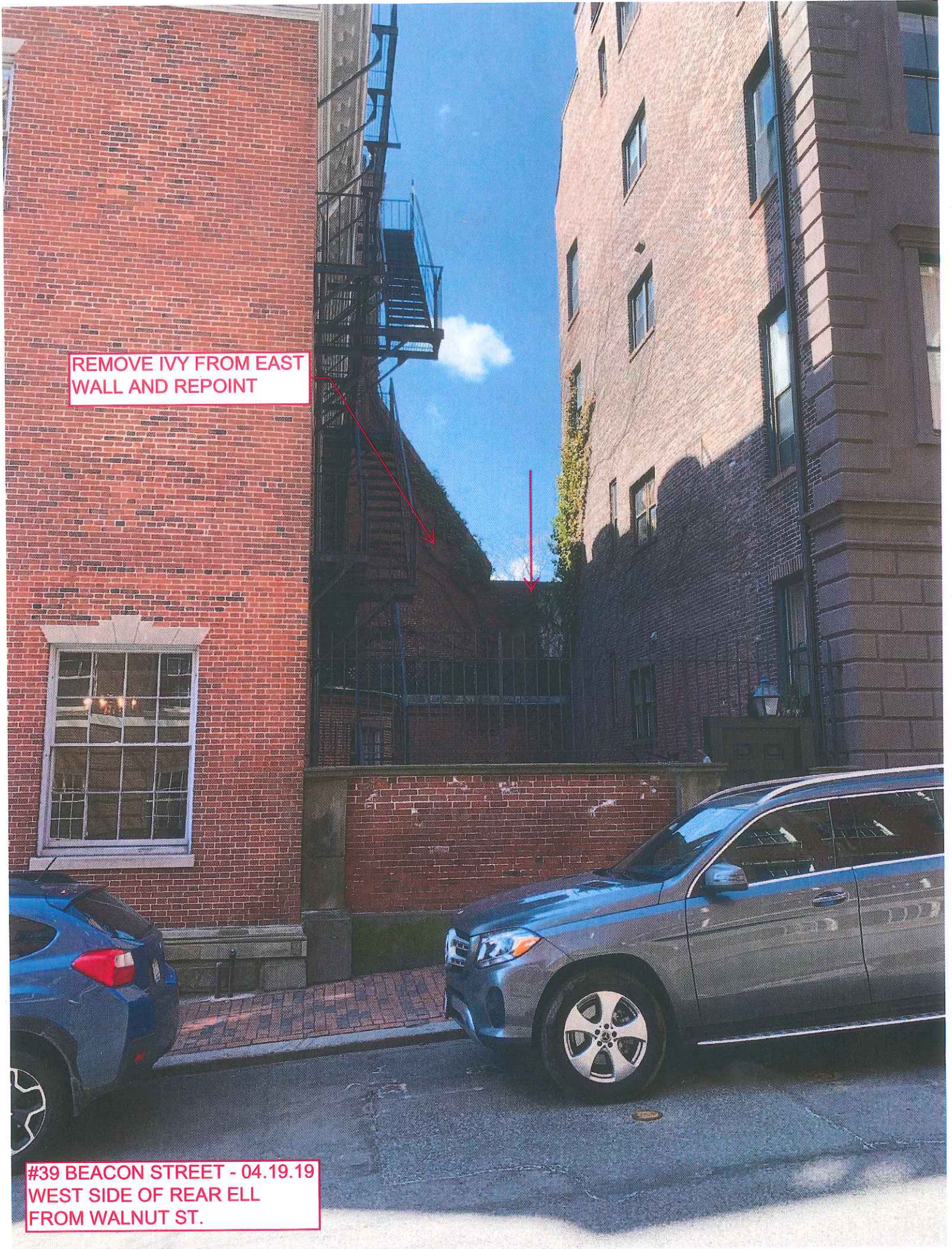
#39 BEACON STREET - 04.19.19
FRONT FACADE



#39 BEACON STREET - 04.19.19
EXISTING INTERCOM SYSTEM

REMOVE IVY FROM EAST
WALL AND REPOINT

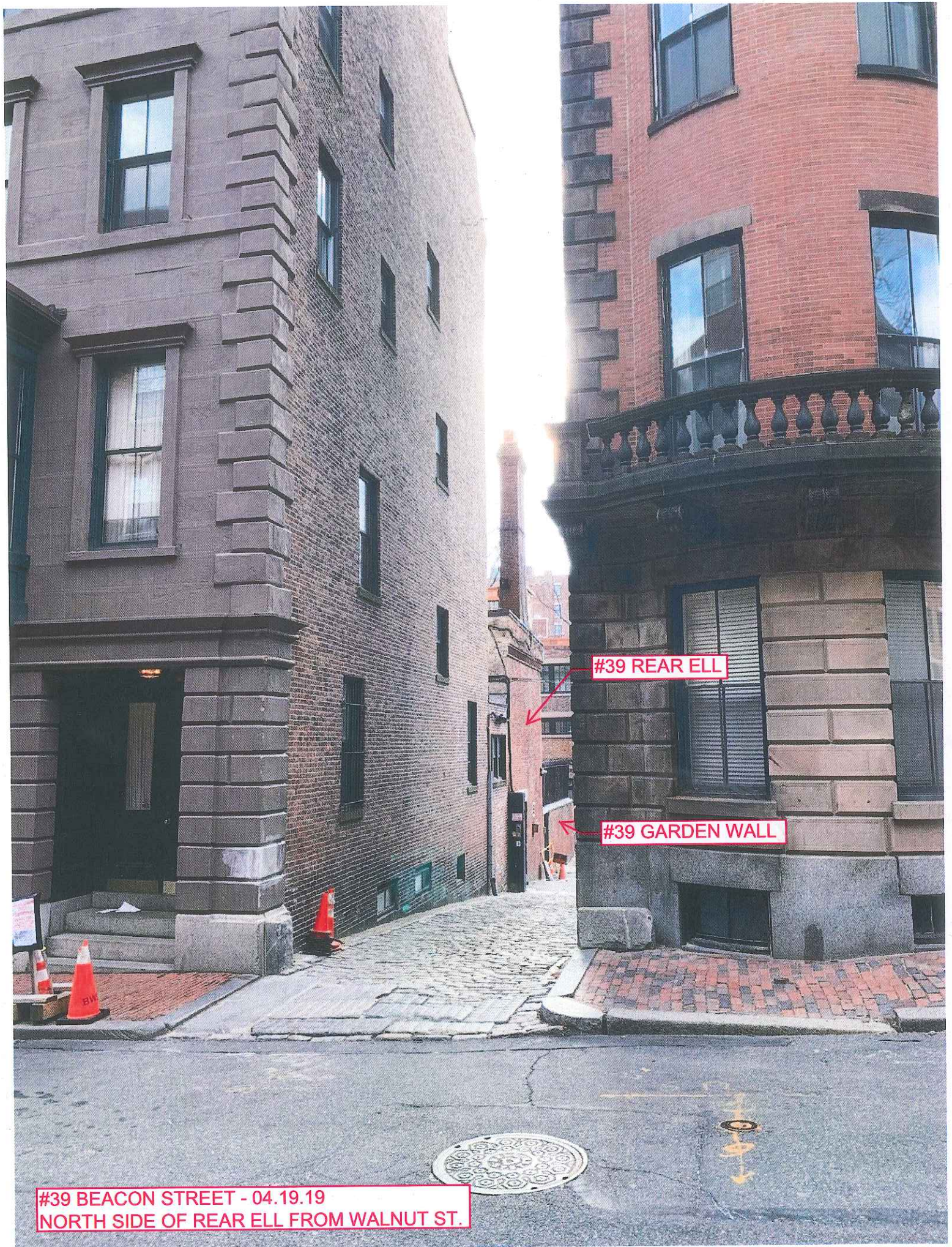
#39 BEACON STREET - 04.19.19
WEST SIDE OF REAR ELL
FROM WALNUT ST.





REMOVE IVY FROM EAST WALL AND REPOINT

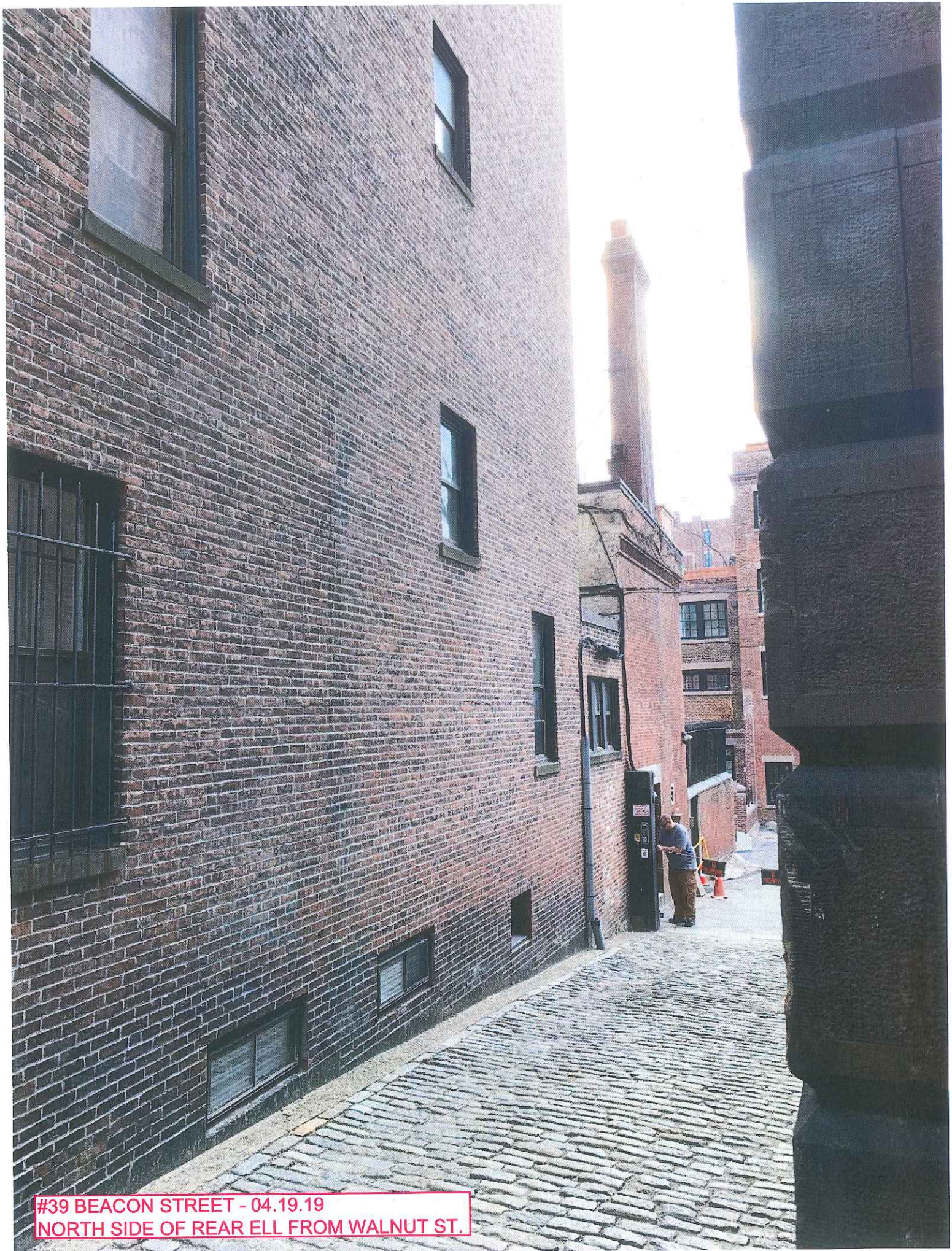
#39 BEACON STREET - 04.19.19
NORTH SIDE OF MAIN
BUILDING FROM WALNUT ST.



#39 REAR ELL

#39 GARDEN WALL

#39 BEACON STREET - 04.19.19
NORTH SIDE OF REAR ELL FROM WALNUT ST.



#39 BEACON STREET - 04.19.19
NORTH SIDE OF REAR ELL FROM WALNUT ST.



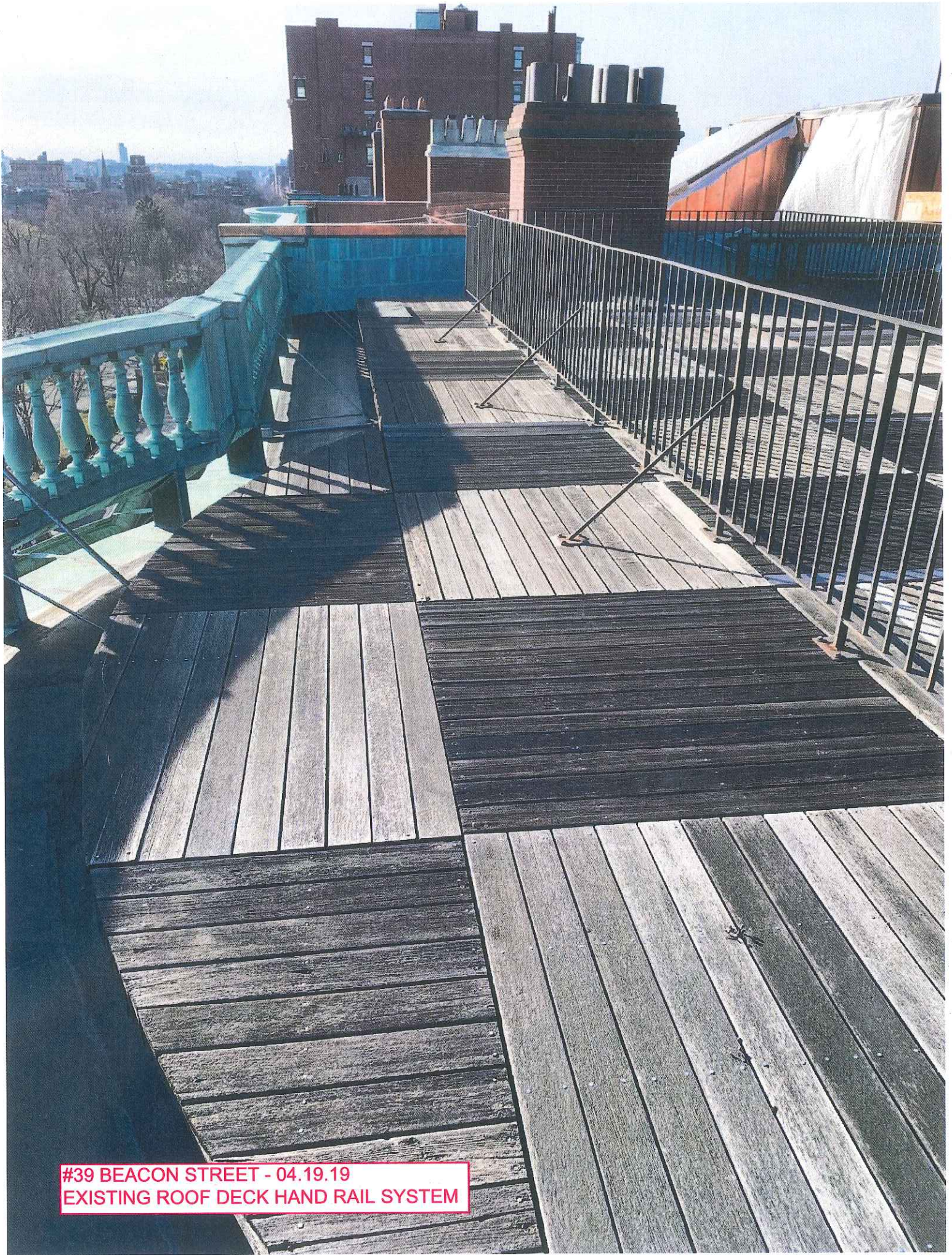
#39 BEACON STREET - 04.19.19
NORTH SIDE OF REAR ELL FROM DRIVEWAY



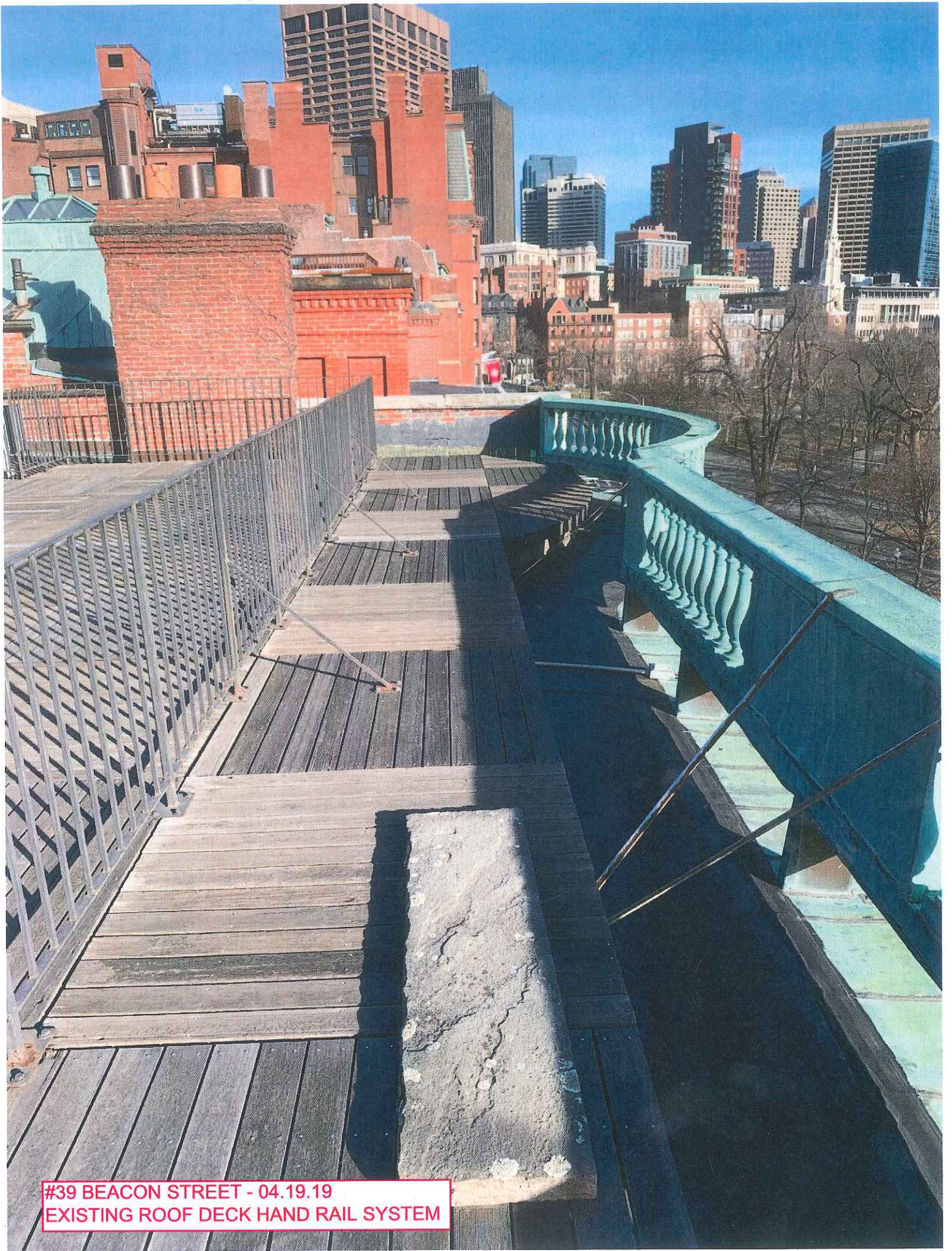
#39 BEACON STREET - 04.19.19
NORTH SIDE OF REAR ELL FROM DRIVEWAY



#39 BEACON STREET - 04.19.19
NORTH SIDE OF GARDEN WALL FROM DRIVEWAY



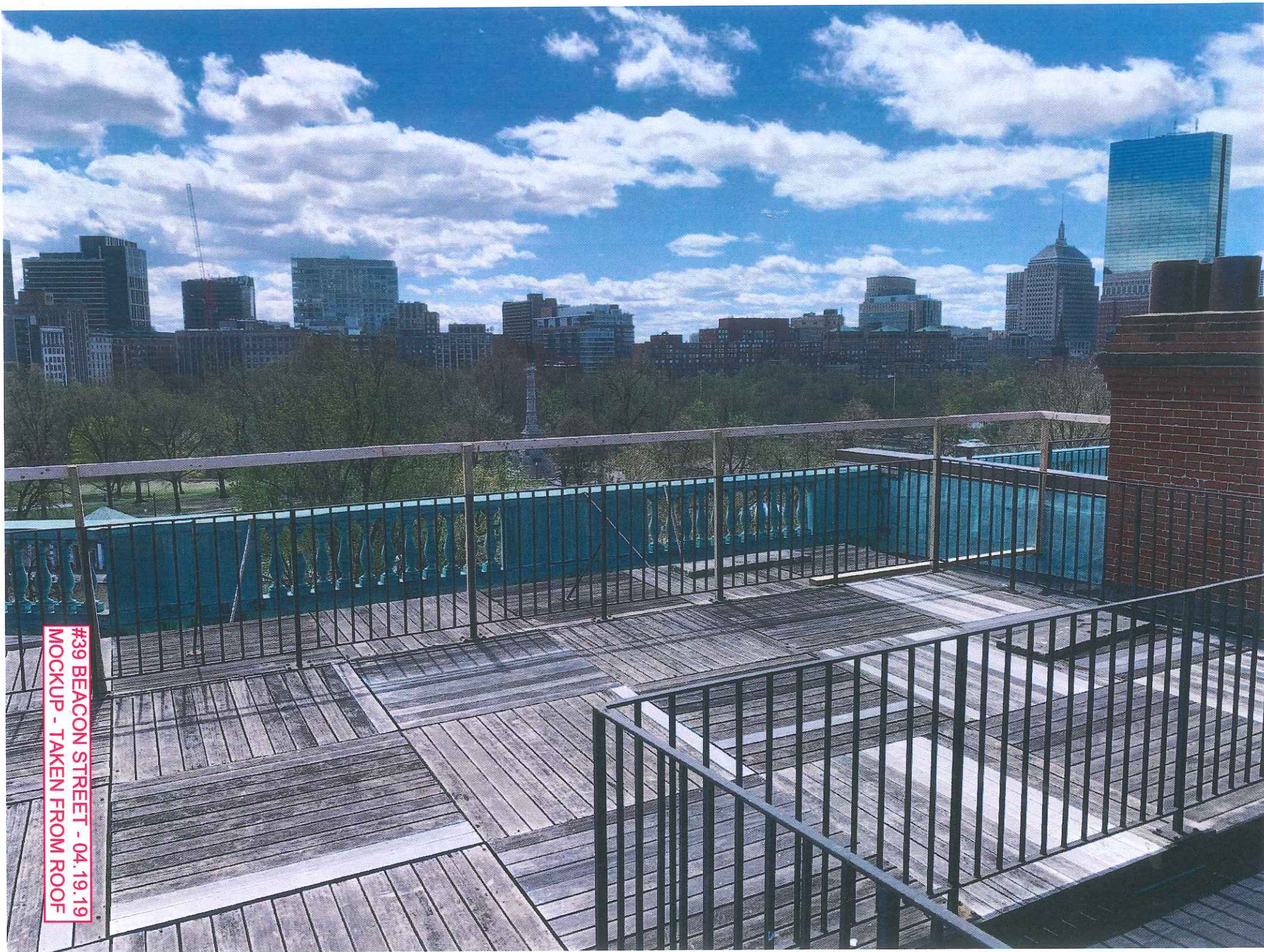
#39 BEACON STREET - 04.19.19
EXISTING ROOF DECK HAND RAIL SYSTEM



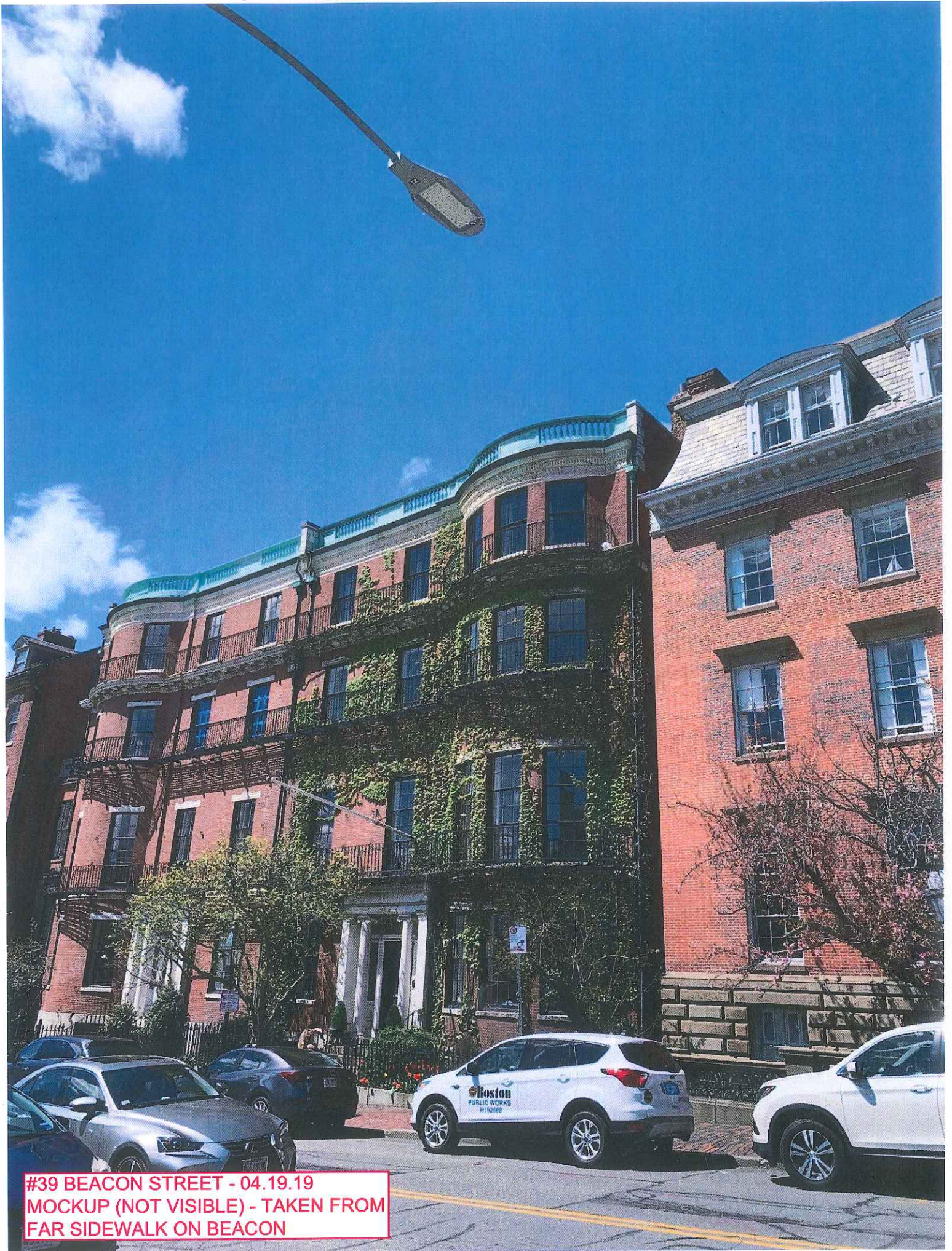
#39 BEACON STREET - 04.19.19
EXISTING ROOF DECK HAND RAIL SYSTEM



#39 BEACON STREET - 04.19.19
MOCKUP - TAKEN FROM ROOF



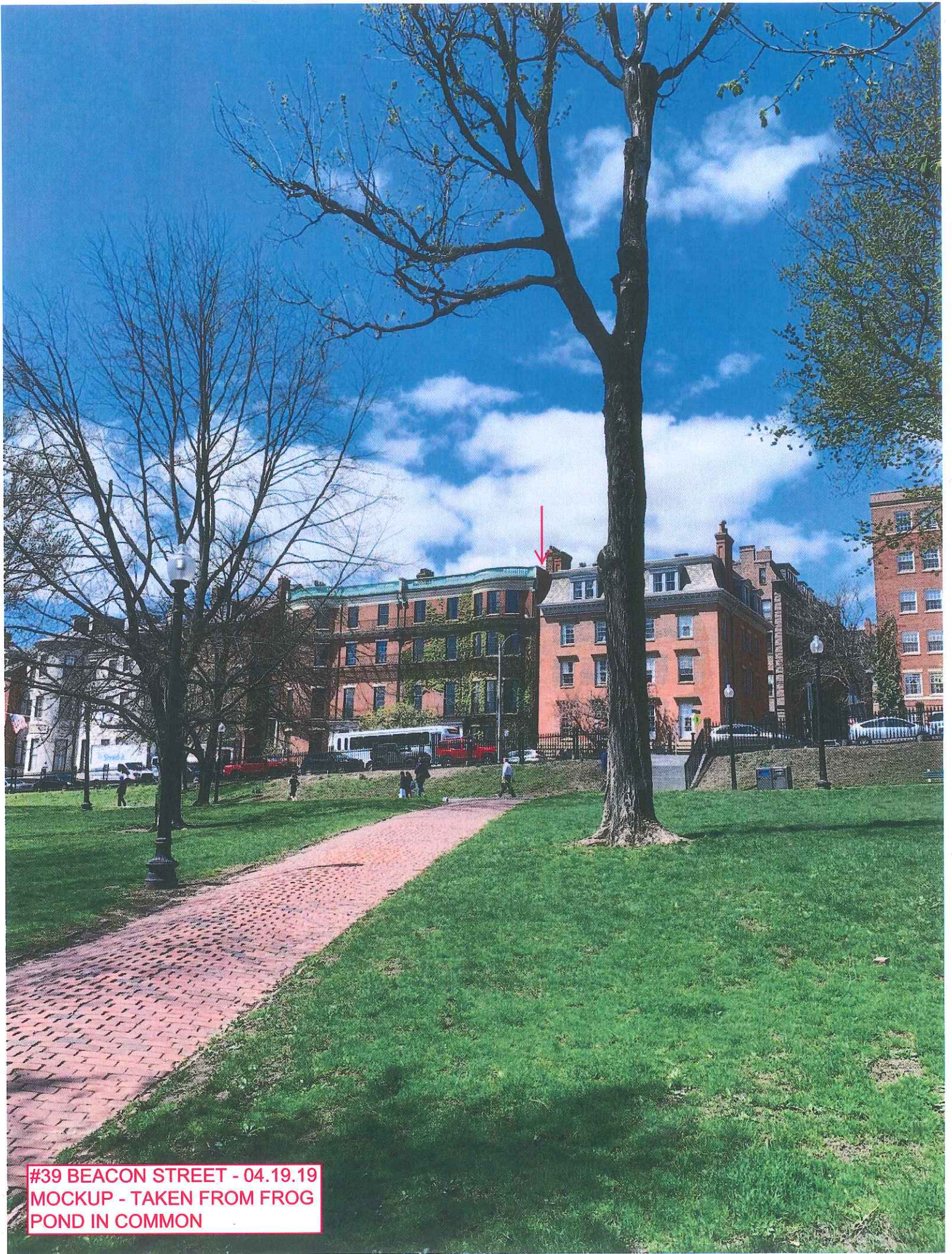
#39 BEACON STREET - 04.19.19
MOCKUP - TAKEN FROM ROOF



#39 BEACON STREET - 04.19.19
MOCKUP (NOT VISIBLE) - TAKEN FROM
FAR SIDEWALK ON BEACON



#39 BEACON STREET - 04.19.19
MOCKUP (VISIBLE, SCREENED BY PARAPET) -
TAKEN FROM PATHWAY IN COMMON



#39 BEACON STREET - 04.19.19
MOCKUP - TAKEN FROM FROG
POND IN COMMON

#39 BEACON STREET
BENJAMIN MOORE CLASSIC PAINT COLORS

Essex Green

PM-11

FRONT DOOR
ESSEX GREEN PM-11

Black

PM-9

WINDOWS & IRON WORK
BLACK PM-9

White Dove

PM-19

FRONT ENTRY TRIM
WHITE DOVE PM-19



Siedle Steel - Video Door station - Intercom Unit
Recess mounted with 3 push buttons (One shown)

Flush Mount FDC Inlet

Designed to provide supplemental water to a building's fire protection system. These units feature a body that's typically concealed behind a wall with only the plate, snoots, and plugs exposed.

250 GPM per inlet

U/L Listed and FM Approved (2-way only)

- **2-way standard equipment:** Units are equipped with a brass clappered concealed FDC body, wall plate, 2½" F NPT x 2½" F swivel NST snoots, and 2½" plugs.
- **3-way, 4-way, and 6-way standard equipment:** Units are equipped with a 6061-T6 aluminum concealed FDC body, wall plate, 3" F NPT x 2½" F swivel NST clappered snoots, and 2½" plugs.



120PBSA

Part #	Type	Size & Configuration	Outlet Type	Outlet Location	A	B	C
120	2-Way	4" x 2½" x 2½"	Female NPT	Back	11¼"	6"	7"
121	2-Way	4" x 2½" x 2½"	Female NPT	Bottom	11¼"	6"	7"
122	2-Way	4" x 2½" x 2½"	Female NPT	Top	11¼"	6"	7"
123	2-Way	4" x 2½" x 2½"	Groove	Back	11¼"	6½"	7"
124	2-Way	4" x 2½" x 2½"	Groove	Bottom	11¼"	6"	7"
125	2-Way	4" x 2½" x 2½"	Groove	Top	11¼"	6"	7"
126	2-Way	6" x 2½" x 2½"	Female NPT	Back	11¼"	7½"	7 5/8"
127	2-Way	6" x 2½" x 2½"	Female NPT	Bottom	11¼"	9"	7 5/8"
128	2-Way	6" x 2½" x 2½"	Female NPT	Top	11¼"	9"	7 5/8"
130	3-Way	6" x 2½" x 2½" x 2½"	Groove	End	19¼"	8½"	7"
131	3-Way	6" x 2½" x 2½" x 2½"	Groove	Back	19¼"	10½"	7"
132	3-Way	6" x 2½" x 2½" x 2½"	Groove	Top / Bottom	19¼"	8½"	7"
133	3-Way	6" x 2½" x 2½" x 2½"	Female NPT	End	19¼"	8½"	7"
134	3-Way	6" x 2½" x 2½" x 2½"	Female NPT	Back	19¼"	10½"	7"
135	3-Way	6" x 2½" x 2½" x 2½"	Female NPT	Top / Bottom	19¼"	8½"	7"
140	4-Way	6" x 2½" x 2½" x 2½" x 2½"	Groove	End	26¼"	8½"	7"
141	4-Way	6" x 2½" x 2½" x 2½" x 2½"	Groove	Back	26¼"	10½"	7"
142	4-Way	6" x 2½" x 2½" x 2½" x 2½"	Groove	Top / Bottom	26¼"	8½"	7"
143	4-Way	6" x 2½" x 2½" x 2½" x 2½"	Female NPT	End	26¼"	8½"	7"
144	4-Way	6" x 2½" x 2½" x 2½" x 2½"	Female NPT	Back	26¼"	10½"	7"
145	4-Way	6" x 2½" x 2½" x 2½" x 2½"	Female NPT	Top / Bottom	26¼"	8½"	7"
150	4-Way	6" x 2½" x 2½" x 2½" x 2½" (Square)	Groove	Top / Bottom	14¼"	8"	7"
151	4-Way	6" x 2½" x 2½" x 2½" x 2½" (Square)	Groove	Back	14¼"	10½"	7"
160	6-Way	6" x 2½" x 2½" x 2½" x 2½" x 2½" x 2½"	Groove	End	40¼"	8½"	7"
161	6-Way	8" x 2½" x 2½" x 2½" x 2½" x 2½" x 2½"	Groove	End	40¼"	9"	7"

Specify Finish:

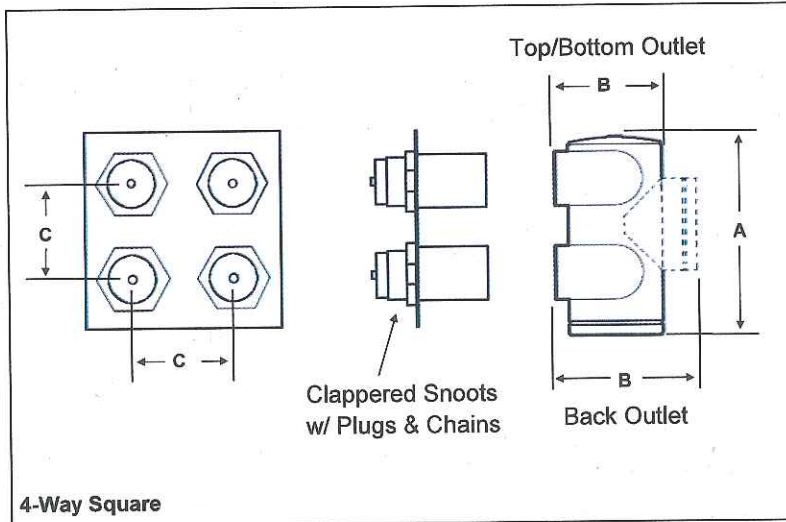
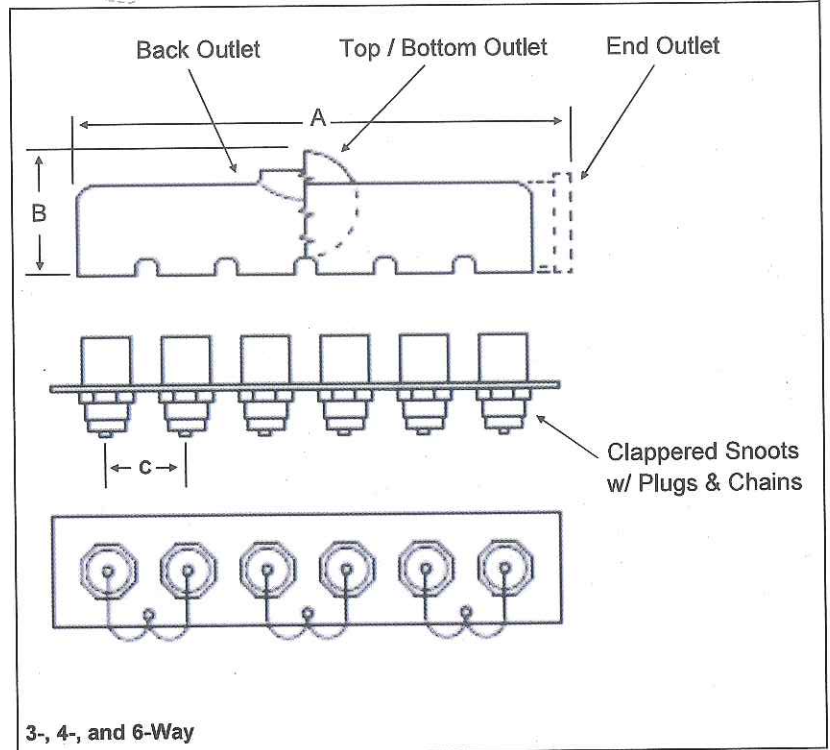
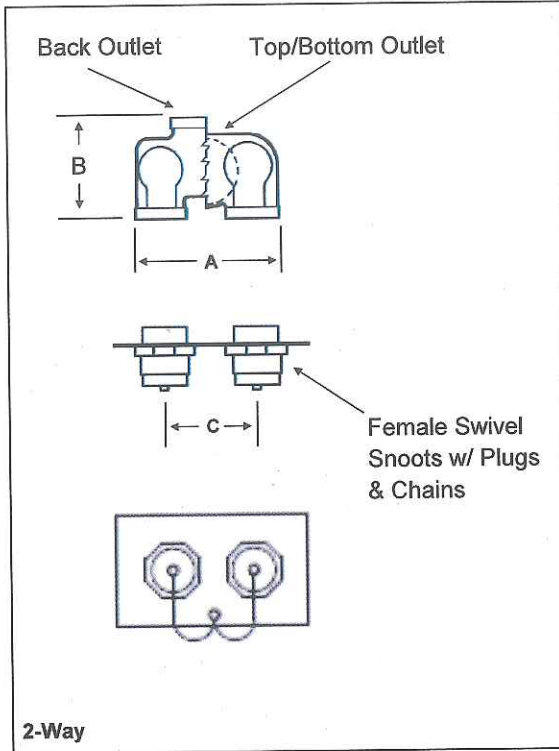
- RB Rough Brass
- PB Polished Brass
- PC Polished Chrome

Specify Wall Plate Lettering:

- A Auto Spkr
- S Standpipe
- SA Standpipe & Auto Spkr
- DS Dry Standpipe

Specify Orientation:

- Horizontal (standard)
- V Vertical



[Search Catalog](#) [Browse Catalog](#) [Contact Us](#) [Home](#)

The Lawler Line®



Product information

Item No.: 667
1/2" Sq. Spear

Dimensions:
Height: 4.5 in.
Width: 2.25 in.

Weight:
0.45 lb.

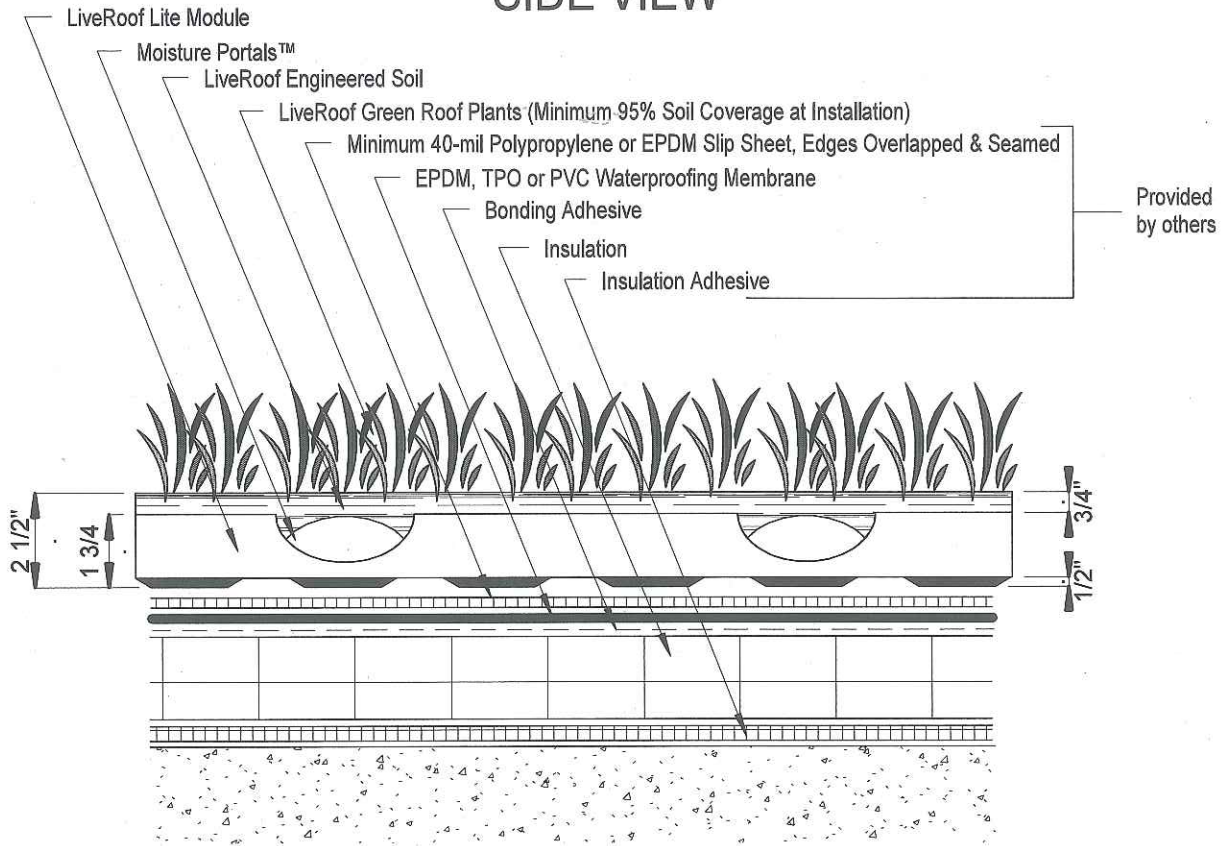


[<< Back to Search](#)

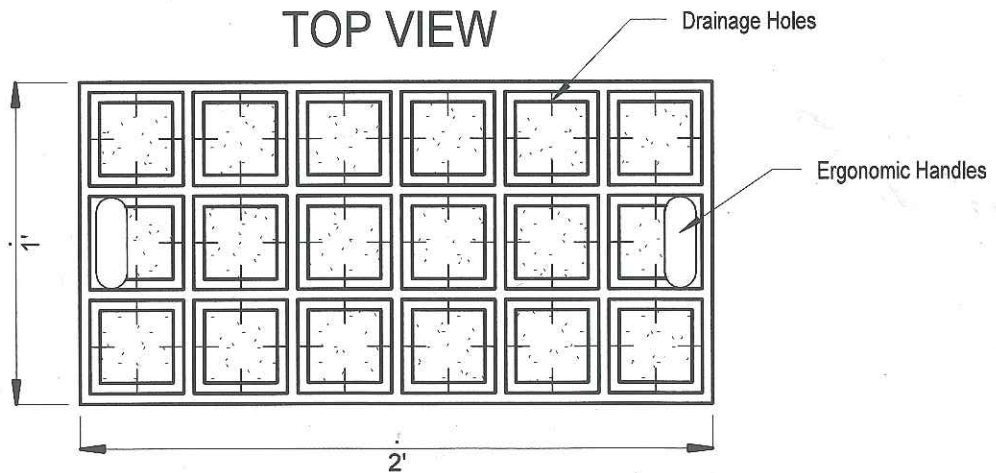
LiveRoof LITE SYSTEM

Over Conventional Roofing Assembly

SIDE VIEW



TOP VIEW



LiveRoof System Saturated Weight: 15-17 lbs / sf

NOT TO SCALE

ILLUSTRATIONS ARE TO CONCEPTUALLY ASSIST PROFESSIONALS IN DESIGNING LIVEROOF INSTALLATIONS. LIVEROOF DOES NOT ACCEPT RESPONSIBILITY FOR ENGINEERING BASED ON ILLUSTRATIONS. A QUALIFIED ROOFING SPECIALIST SHOULD BE CONSULTED TO DETERMINE APPROPRIATE WATERPROOFING AND ROOF DECK MATERIALS AND SUITABLE DESIGN.

LITE A
v2012-01-18