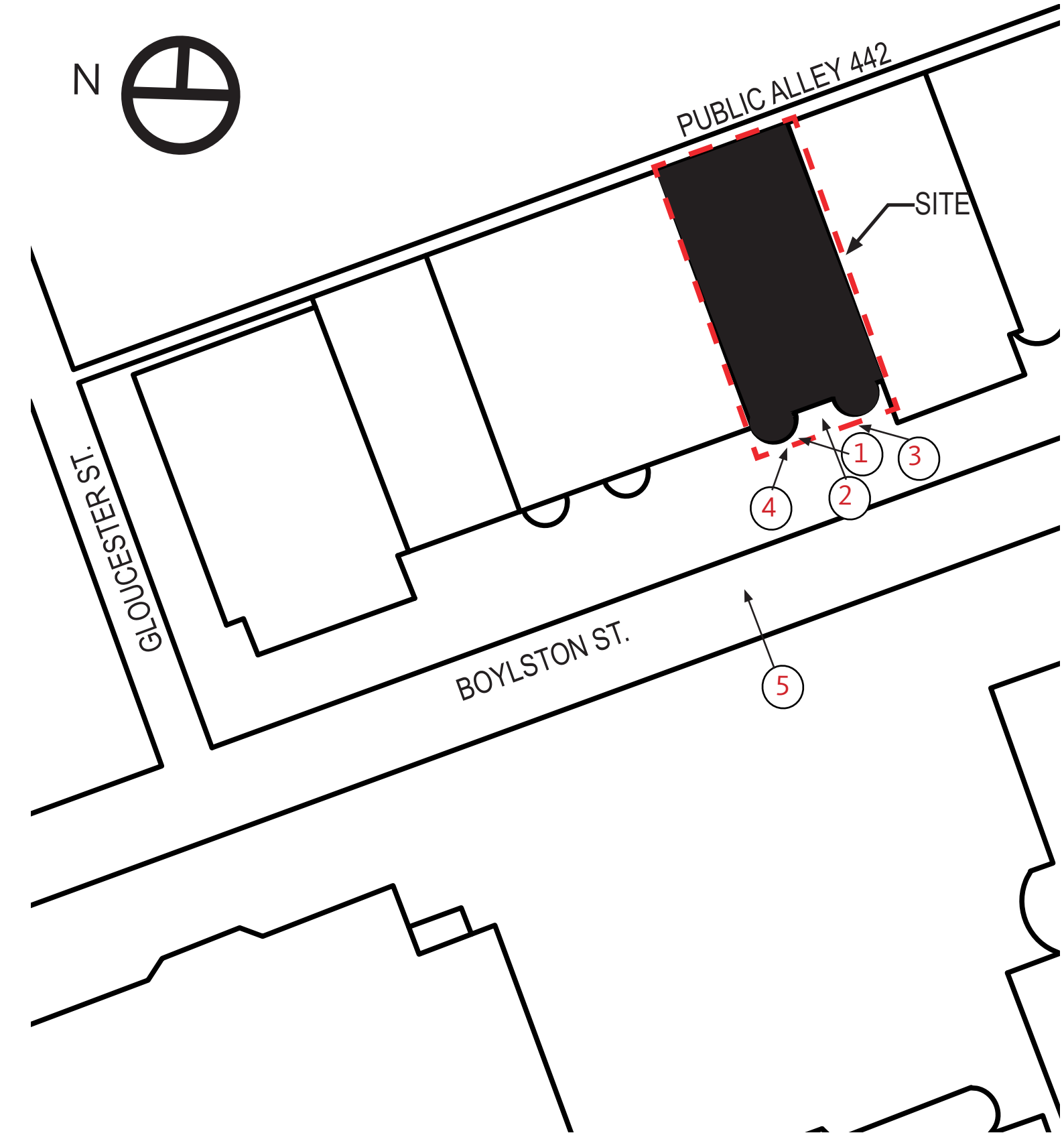




KEY PLAN



Submitted: 04 June 2019

BANK OF AMERICA - 855 BOYLSTON STREET

A: EXISTING SITE CONTEXT

Gensler



Submitted: 04 June 2019

BANK OF AMERICA - 855 BOYLSTON STREET

A: EXISTING SITE CONTEXT

Gensler

1: EXISTING ELEVATION



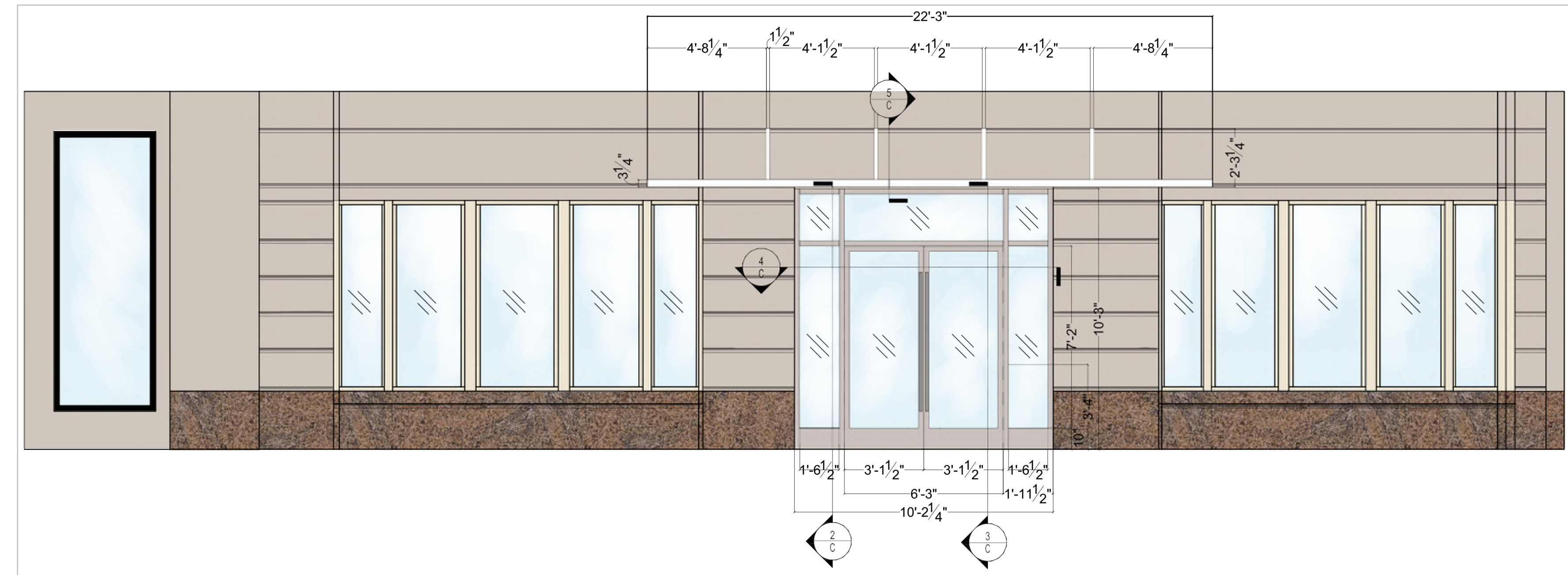
ALL EXISTING MASONRY AND MASONRY DETAILS TO REMAIN. FOR ADDITIONAL INFORMATION.

EXISTING SIGNAGE TO BE REMOVED. HOLES TO BE PATCHED TO MATCH EXISTING.

EXISTING WINDOWS TO REMAIN AND CLEANED.

EXISTING DOORS TO BE REPLACED

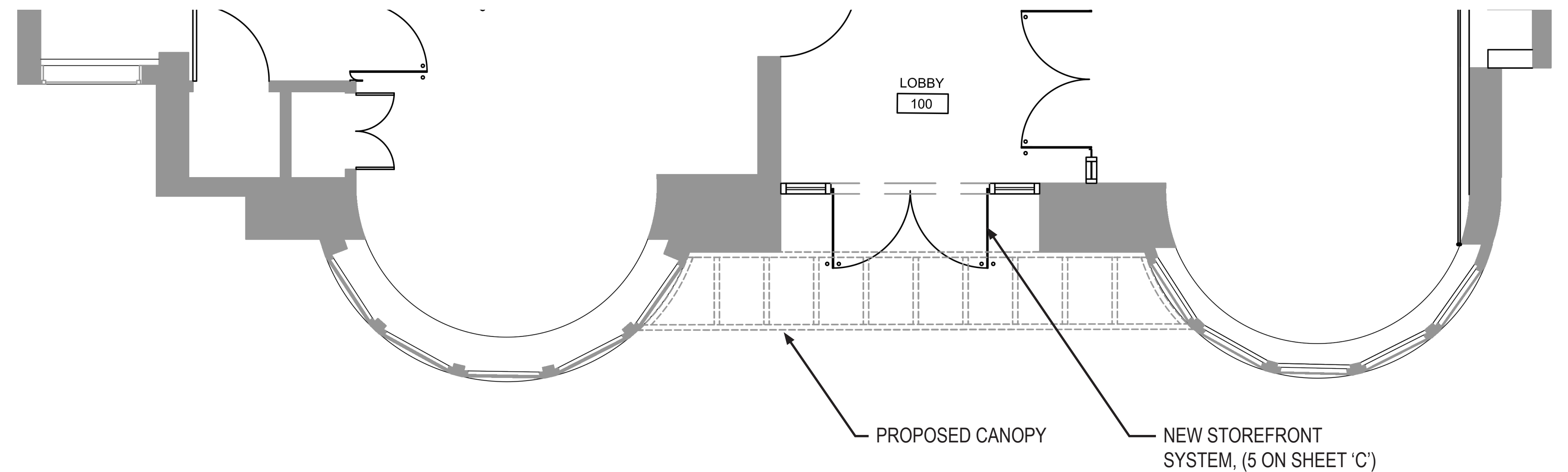
3: PROPOSED ELEVATION (RENDERED)



2: CANOPY PRECEDENT



4: PROPOSED PARTIAL PLAN

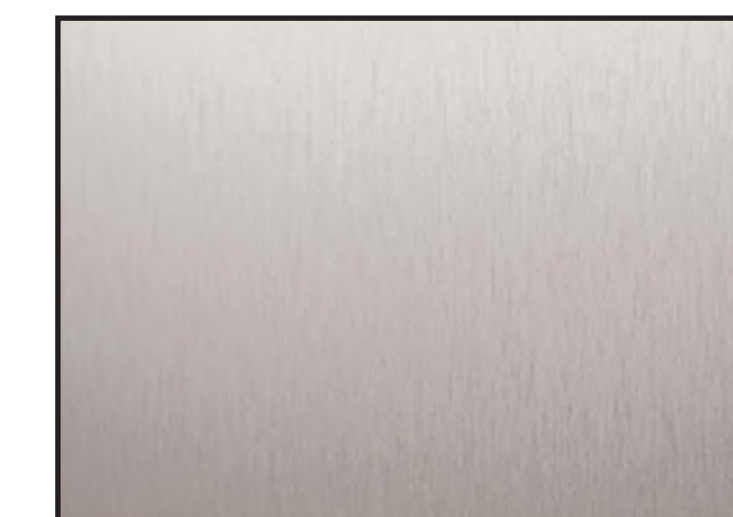


MATERIALS

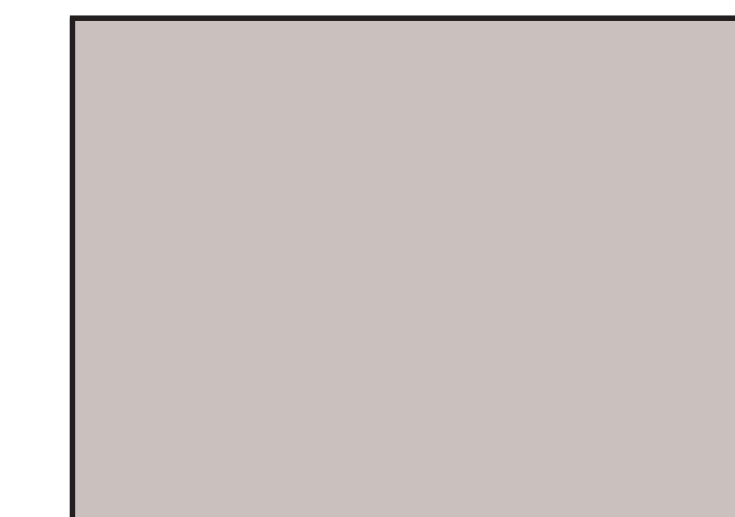
01: GLOSSY ANODIZED WHITE - CANOPY



02: BRUSHED STAINLESS- HARDWARE



03: CUSTOM COLOR STOREFRONT - MEDIUM GRAY



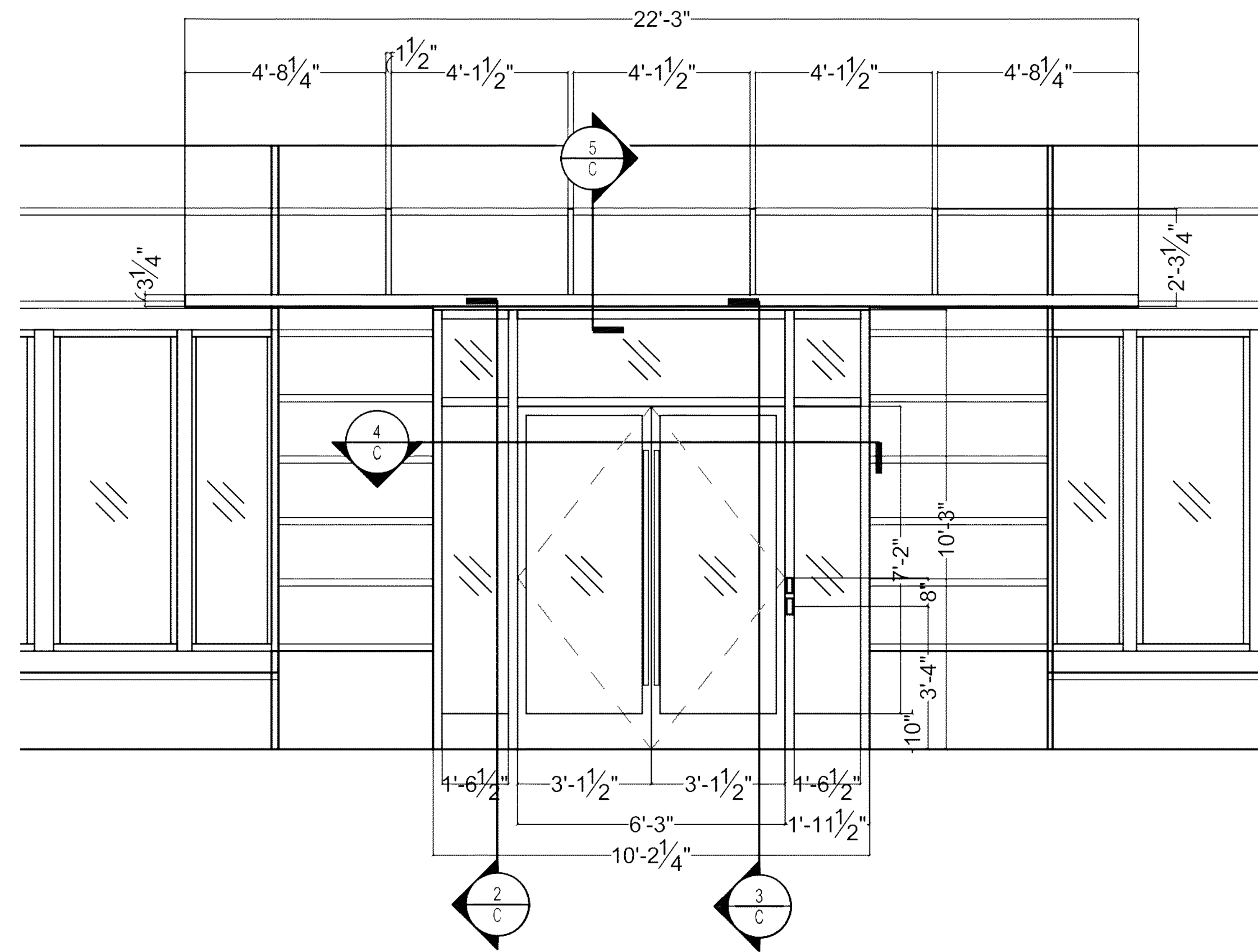
Submitted: 04 June 2019

BANK OF AMERICA - 855 BOYLSTON STREET

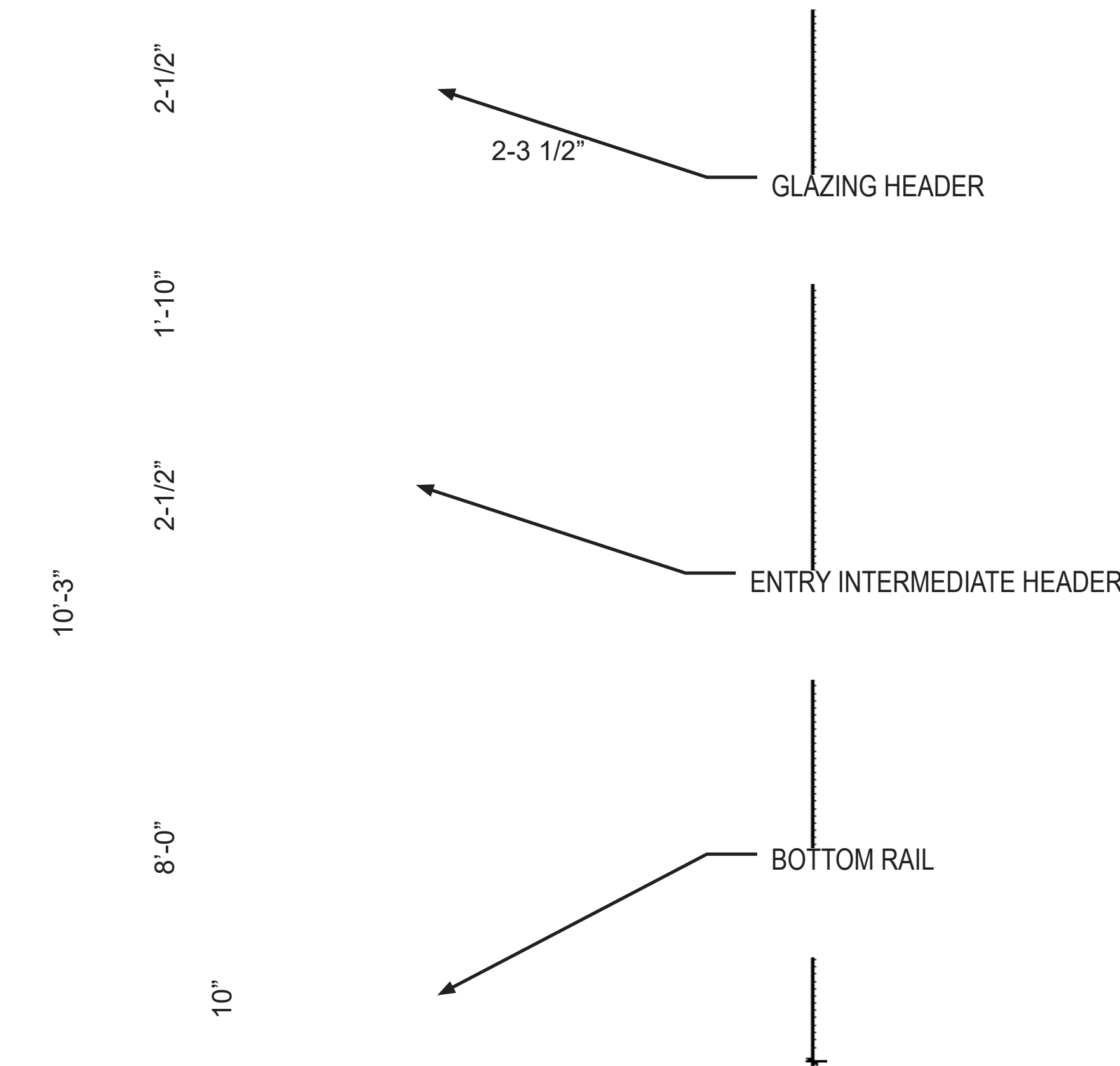
B: BOYLSTON STREET FACADE

Gensler

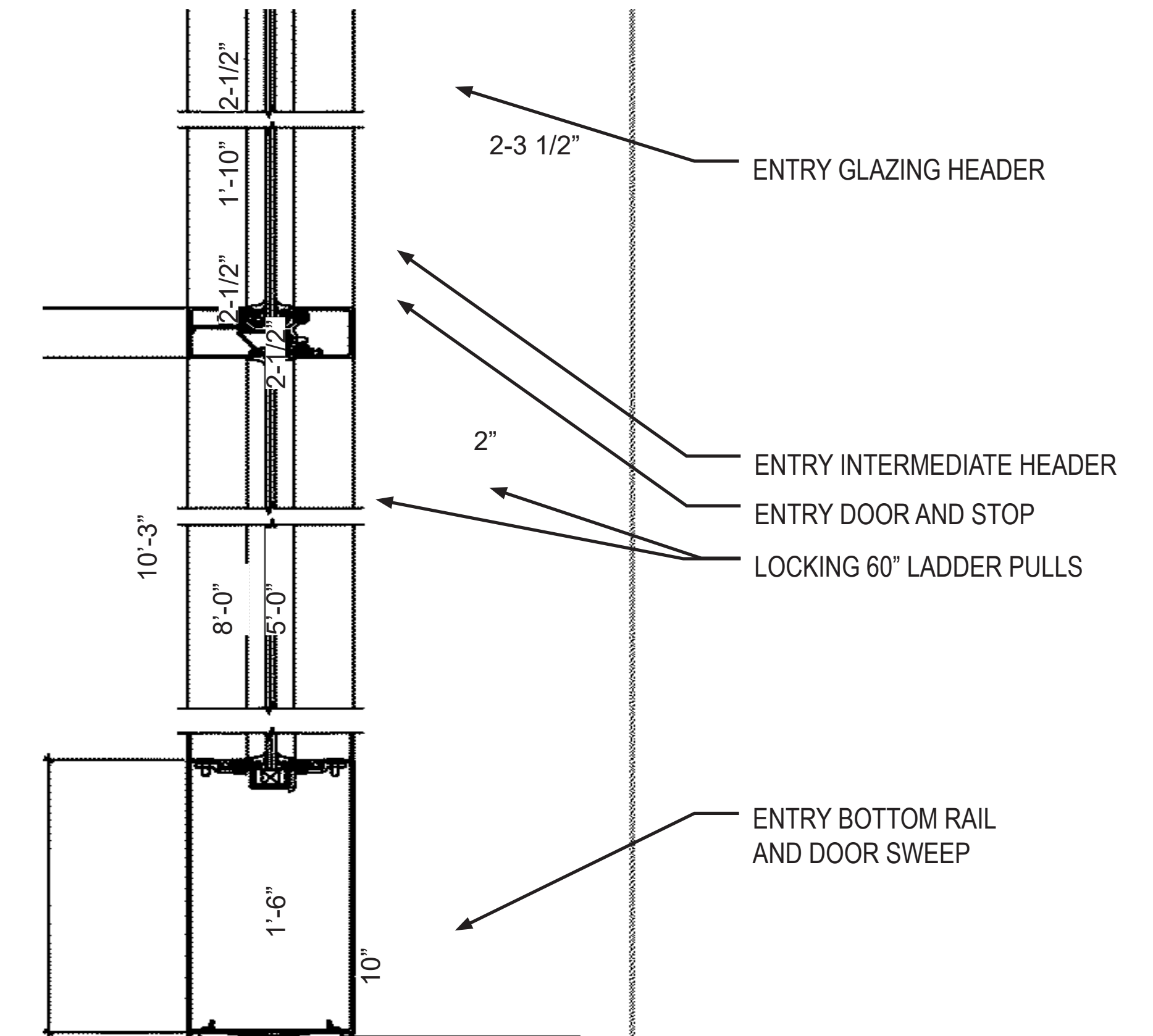
1: PROPOSED ELEVATION



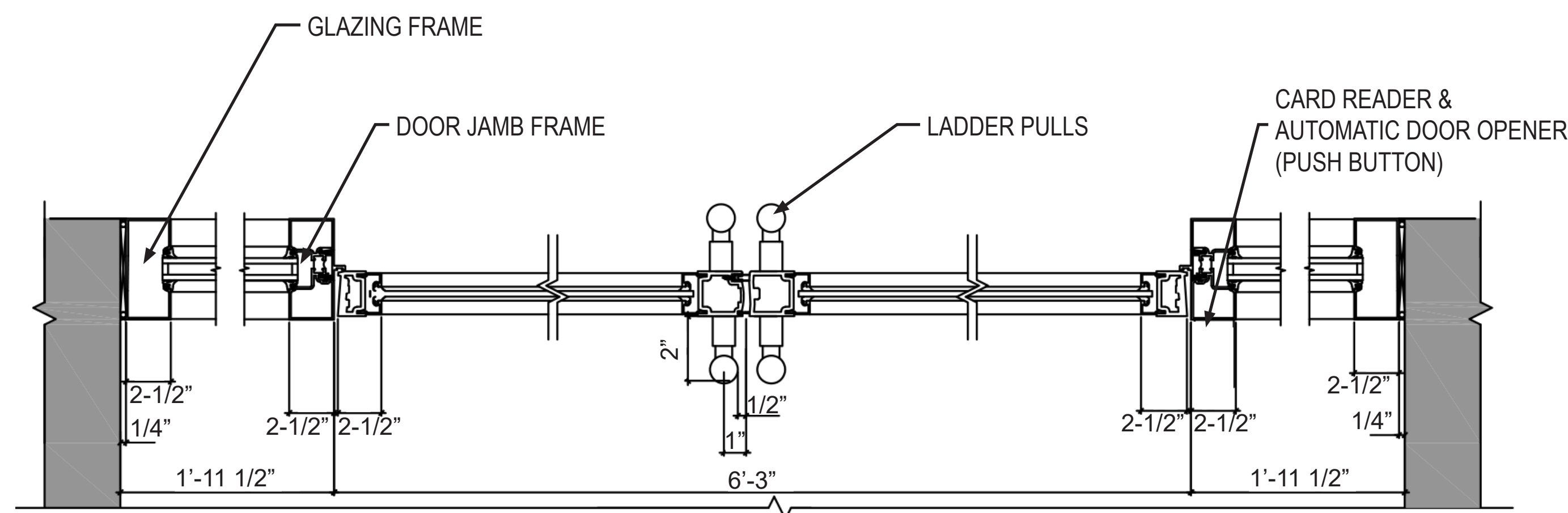
2: GLAZING SECTION



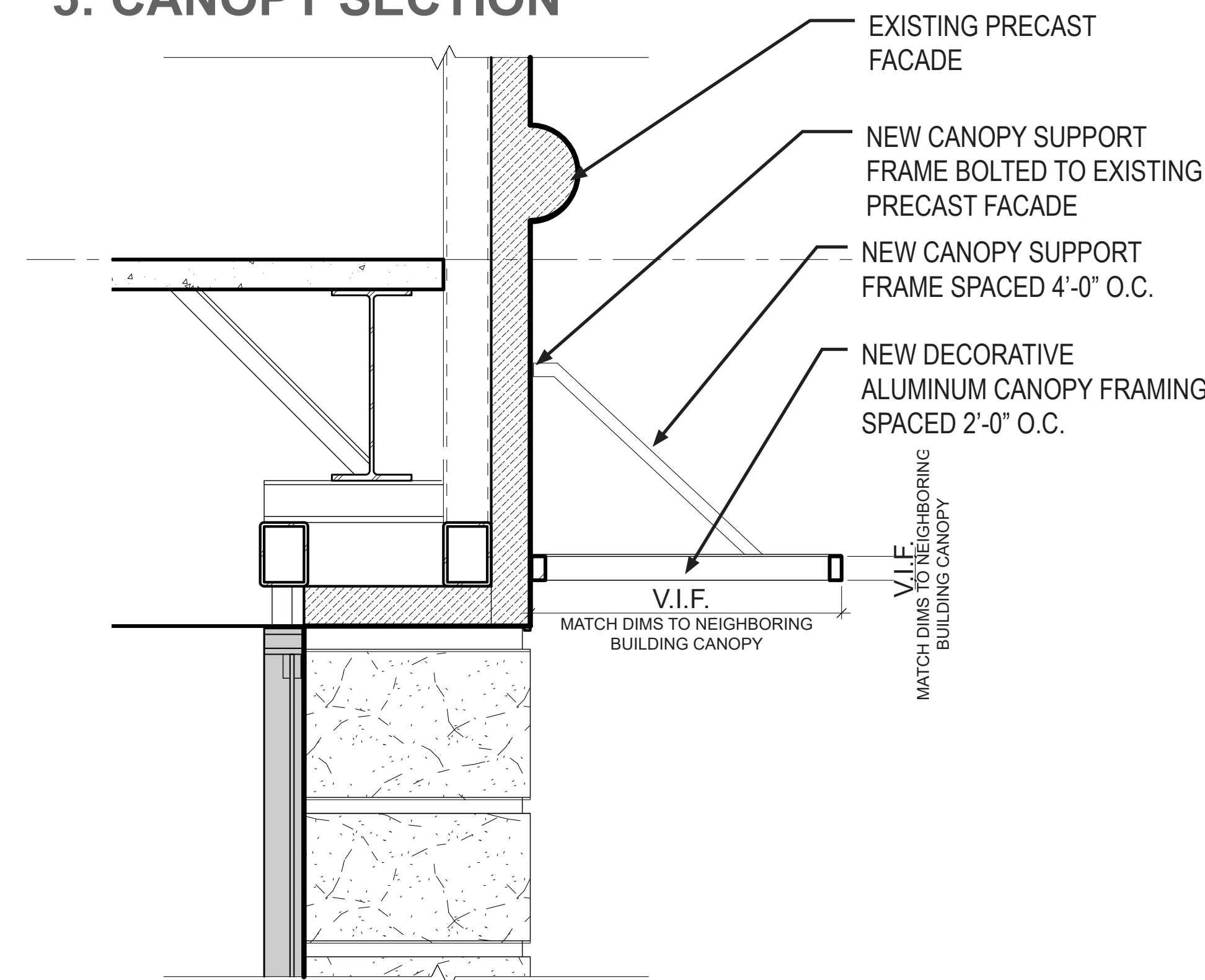
3: DOOR SECTION



4: STOREFRONT SECTION



5: CANOPY SECTION



6: PROPOSED ENTRY DOOR SPEC

Aesthetics
The interior thermal cladding means that Insulclad® entrances are 2-1/4" deep - slightly deeper than standard entrances. A major benefit of the two-piece construction and interior cladding is the ability to create different interior and exterior colors. 260 Insulclad® provides a slimmer look, while 360 provides extra strength for heavy-traffic applications such as schools and institutions, and 560 provides a monumental visual statement for applications such as banks and government buildings. Insulclad® Entrance dimensions include:

	260	360	560
Stile Widths	2-1/8" (54)	3-1/2" (88.9)	5" (127)
Top Rail	2-1/4" (57.2)	3-1/2" (88.9)	5" (127)
Bottom Rail	3-7/8" (98.4)	6-1/2" (165.1)	6-1/2" (165.1)

All three entrances offer an optional 7-1/2" (190.5) and 10" (254) bottom rail. Additionally, optional horizontal cross rails are offered in 2-1/4" (57.2), 3-1/2" (88.9), 6" (152.4) and 8-1/4" (209.4) dimensions. Maximum size for single entrances is 3'6" x 8'0" (1067 x 2438) or 7'0" x 8'0" (2134 x 2438) for pairs of entrances.

Insulclad® Entrances are single acting and mounted on offset pivots, butt hinges or continuous hinges. The 260, 360 and 560 Entrances accept 1" (25.4) infills, and numerous Kawneer hardware options are available.

Performance
To resist both lever arm and torsion forces that constantly act on any door, all three Insulclad® entrances feature Dual Moment corner construction with four Sigma deep penetration and fillet welds, plus mechanical fastening at each corner. Each door corner comes with a Limited Lifetime Warranty, which is good for the life of the door under normal-use operation. This warranty is transferable from building owner to building owner and is in addition to the standard two-year warranty covering each Kawneer door.

Kawneer Sealair® bulb neoprene weather stripping forms a positive seal around the door frame and provides a substantial reduction in air infiltration, which results in improved comfort and economies in heating and cooling costs. The system is wear and temperature resistant and replaces conventional weathering. Bottom weather strip at the interior contains a flexible blade gasket to meet and contact the threshold, enhancing the air and water infiltration performance characteristics. Computer simulation testing has been conducted in accordance with NFRC 100/200/500 and standard 15 AAMA 507-03 glass options.

For the Finishing Touch
Permanodur® Anodized finishes are available in Class I and Class II in seven different color choices.
Painted finishes, including fluoropolymer, that meet AAMA 2605 are offered in many standard choices and an unlimited number of specially-designed colors.
Solvent-free powder coatings add the green element with high performance, durability and scratch resistance that meet the standards of AAMA 2604.

Note: Numbers in parentheses () are millimeters unless otherwise noted.

Kawneer Company, Inc. Technology Park / Atlanta 555 Guthrie Court Norcross, GA 30092
Kawneer.com 770.449.5555

© Kawneer Company, Inc. 2019. 17140 R13 U.S.A. Form No. 08-2017
Printed using soy based inks.



1315 North Center, Columbus, GA
Architect: C.S.I. Architects, Columbus, GA
Glazing Contractor: Unecoda Glass Co., Columbus, GA

