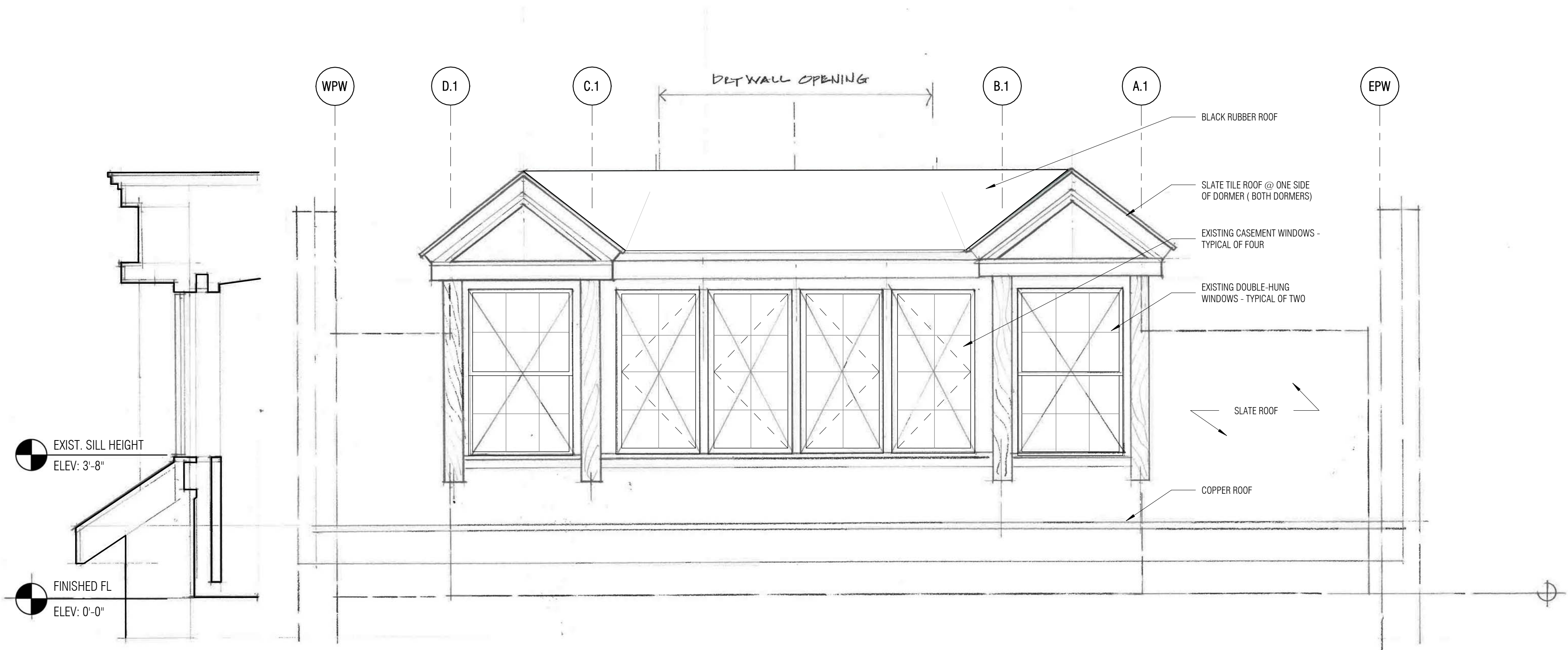


**EXISTING CONDITION**  
**EXTERIOR ELEVATION & SECTION**

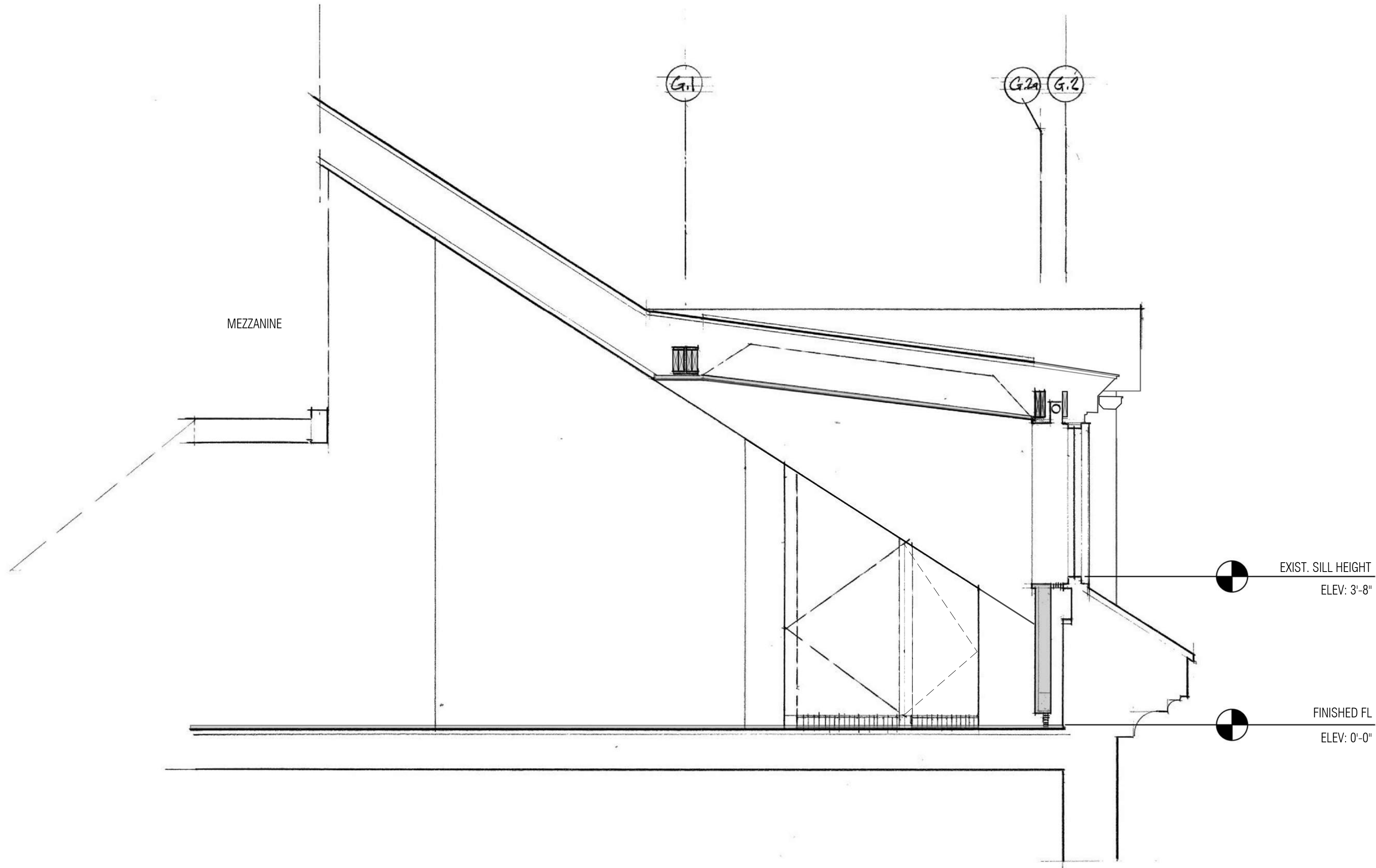


1 SOUTH ELEVATION / SECTION - EXISTING  
 1/2" = 1'-0"



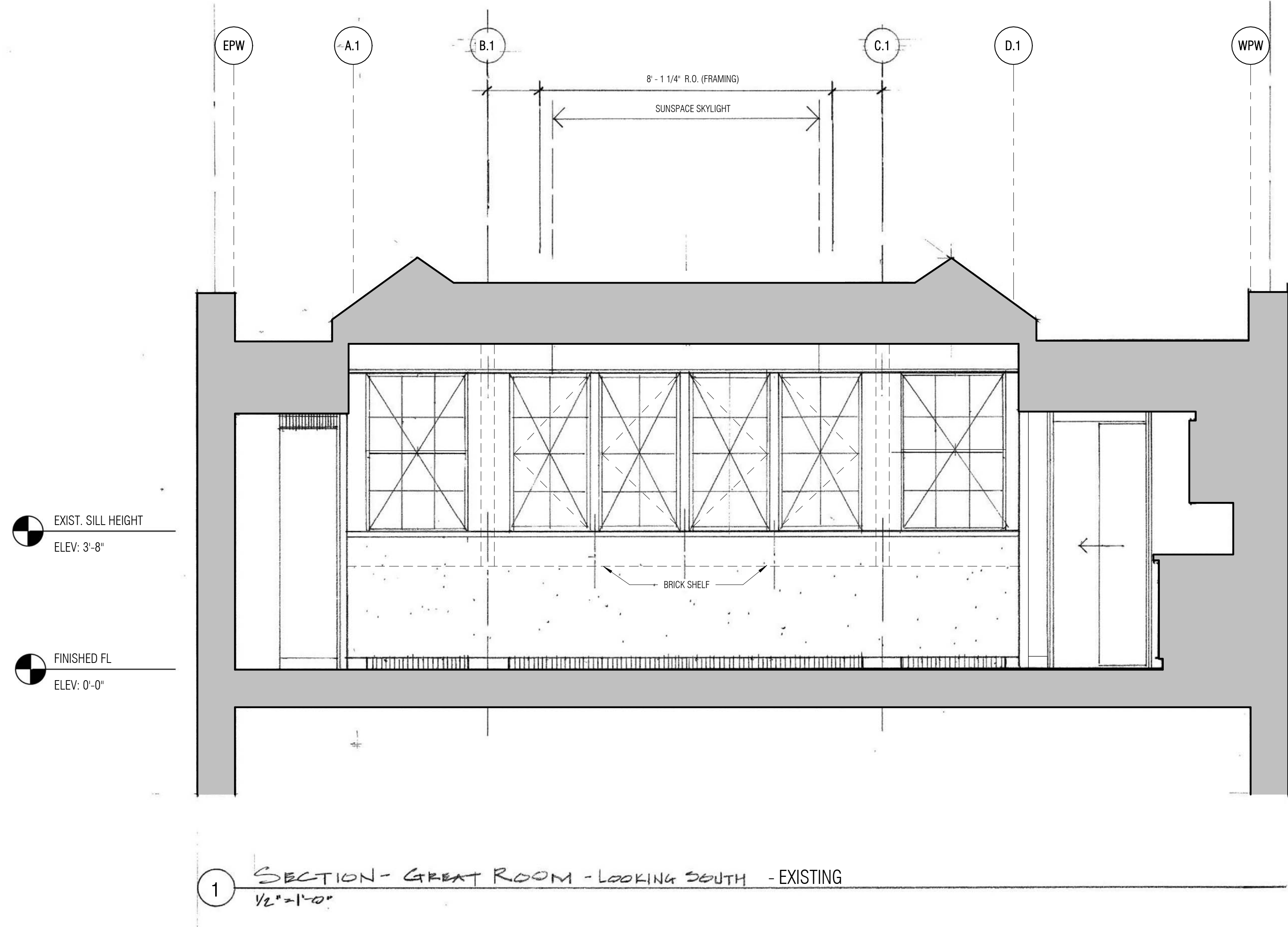
2 EXISTING SOUTH ELEVATION PHOTO

**EXISTING CONDITION**  
SECTION VIEWING EAST

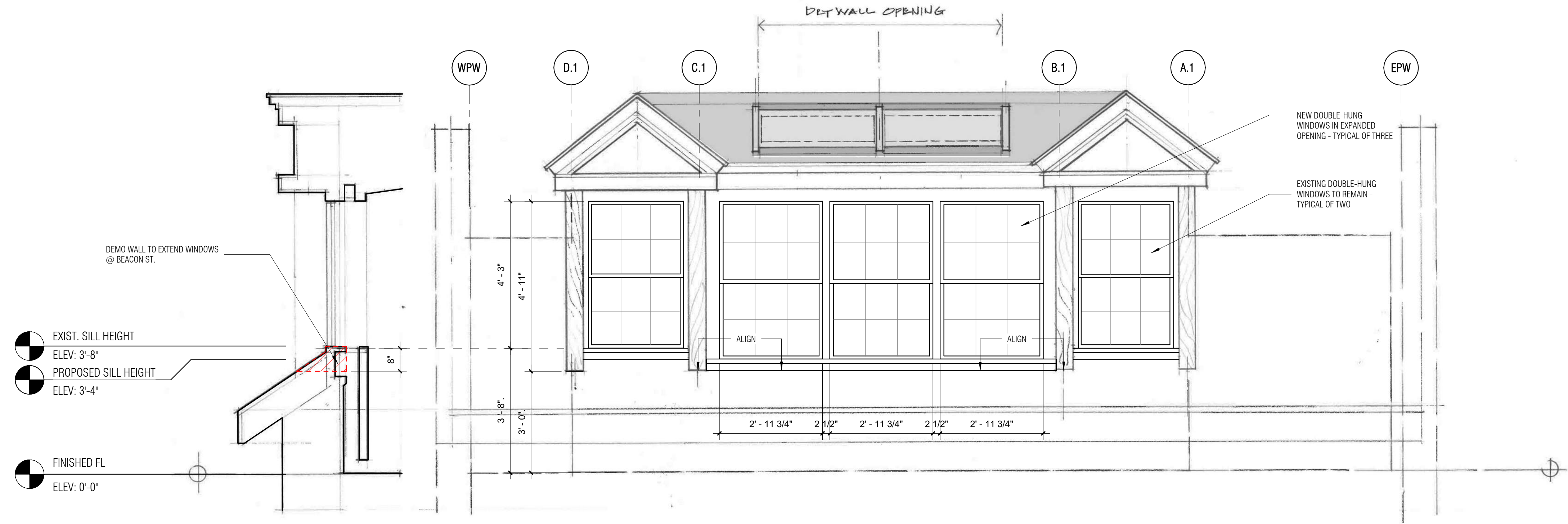


① SECTION - GREAT ROOM LOOKING EAST - EXISTING

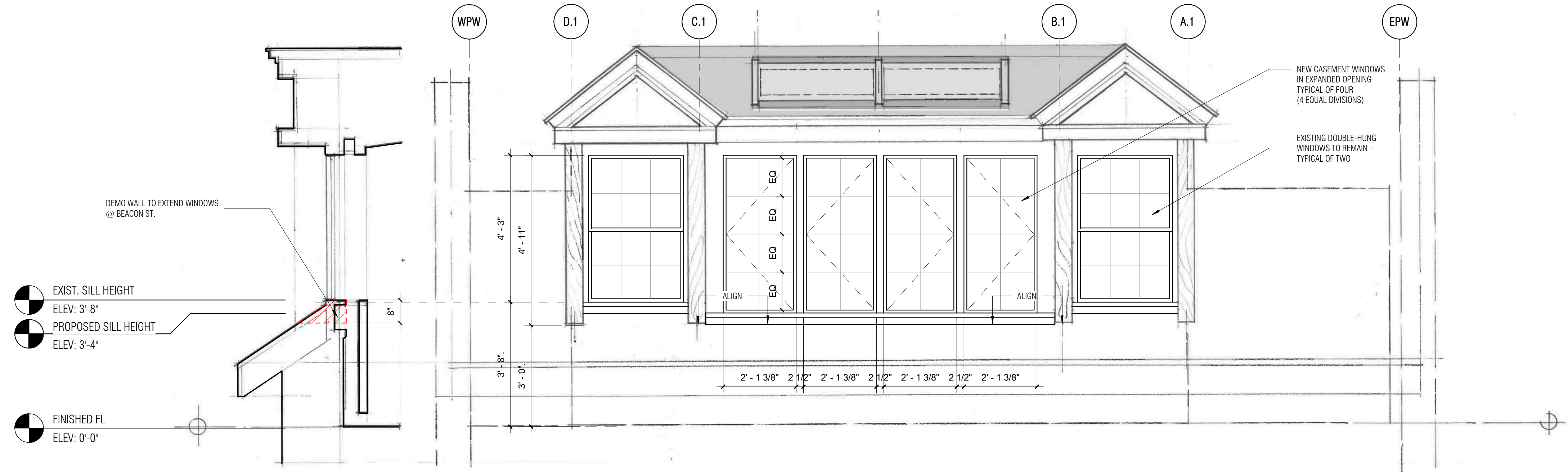
**EXISTING CONDITION**  
**INTERIOR ELEVATION**



**PROPOSED CONDITION**  
**EXTERIOR ELEVATION & SECTION**

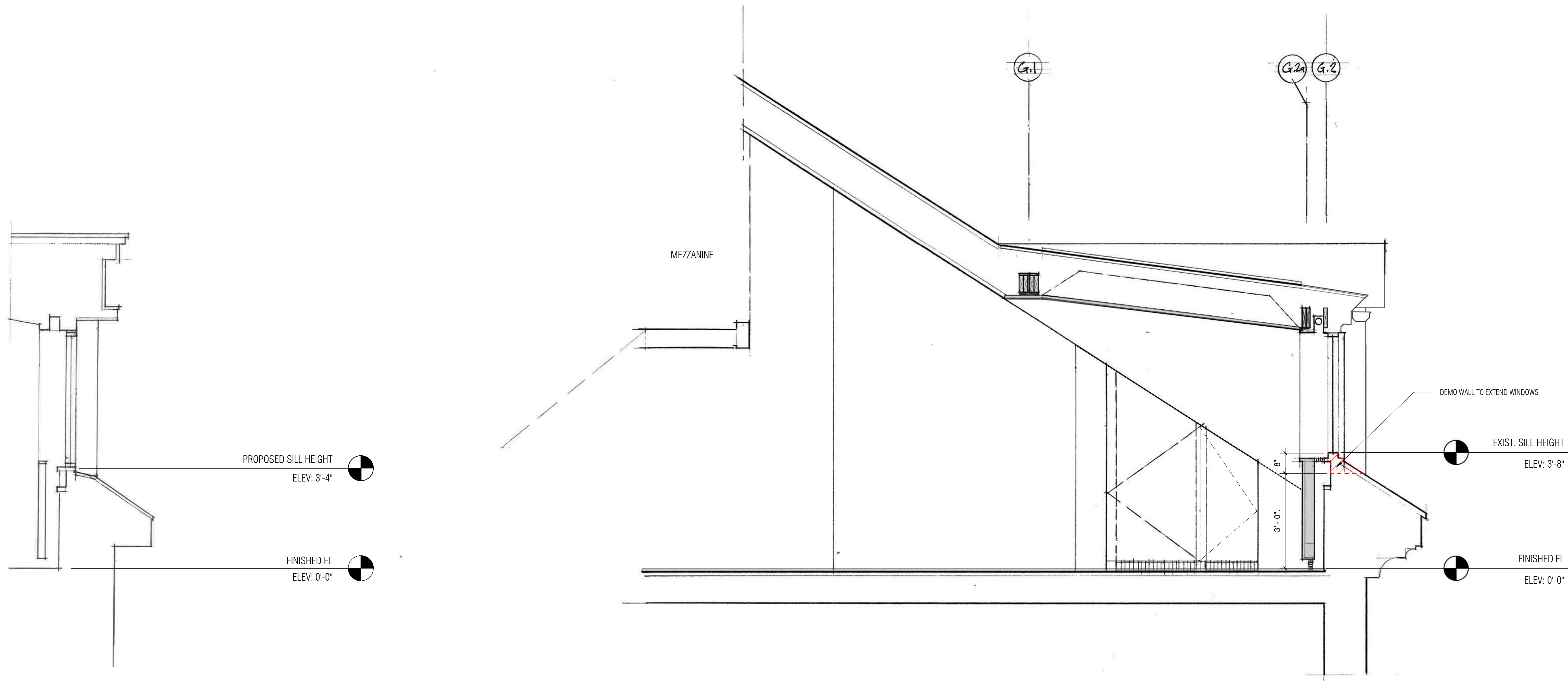


2 SOUTH ELEVATION / SECTION - PROPOSED OPTION 1B - 3 DOUBLE-HUNG WINDOWS  
 1/2" = 1'-0"



1 SOUTH ELEVATION / SECTION - PROPOSED OPTION 1A - 4 CASEMENT WINDOWS W/ 2 OVER 4 DIVISIONS  
 1/2" = 1'-0"


**PROPOSED CONDITION**  
SECTION VIEWING EAST

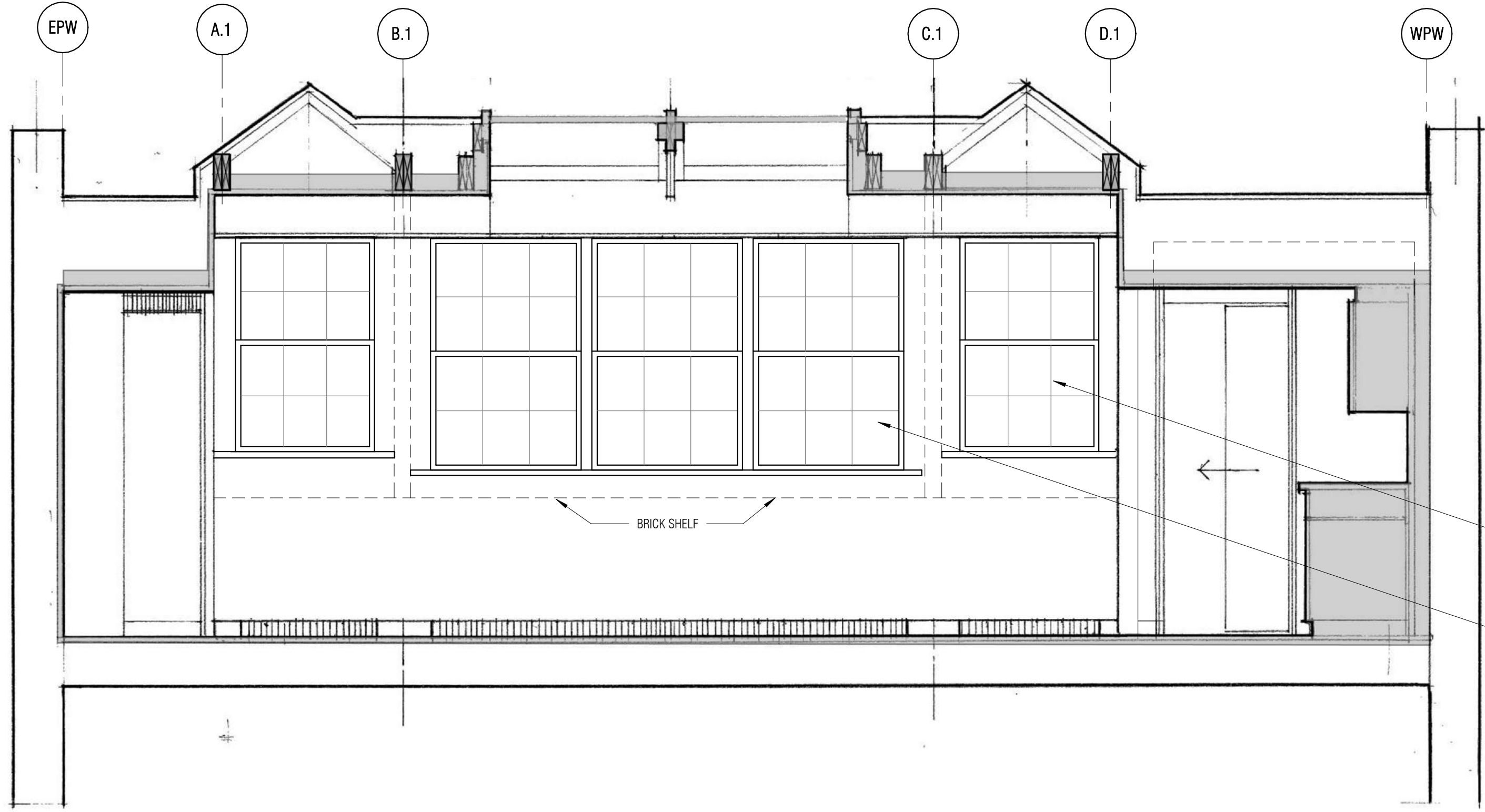


1 PROPOSED SECTION @ DORMER - GREAT ROOM

2 SECTION - GREAT ROOM LOOKING EAST - DEMO


**PROPOSED CONDITION**  
**INTERIOR ELEVATION**

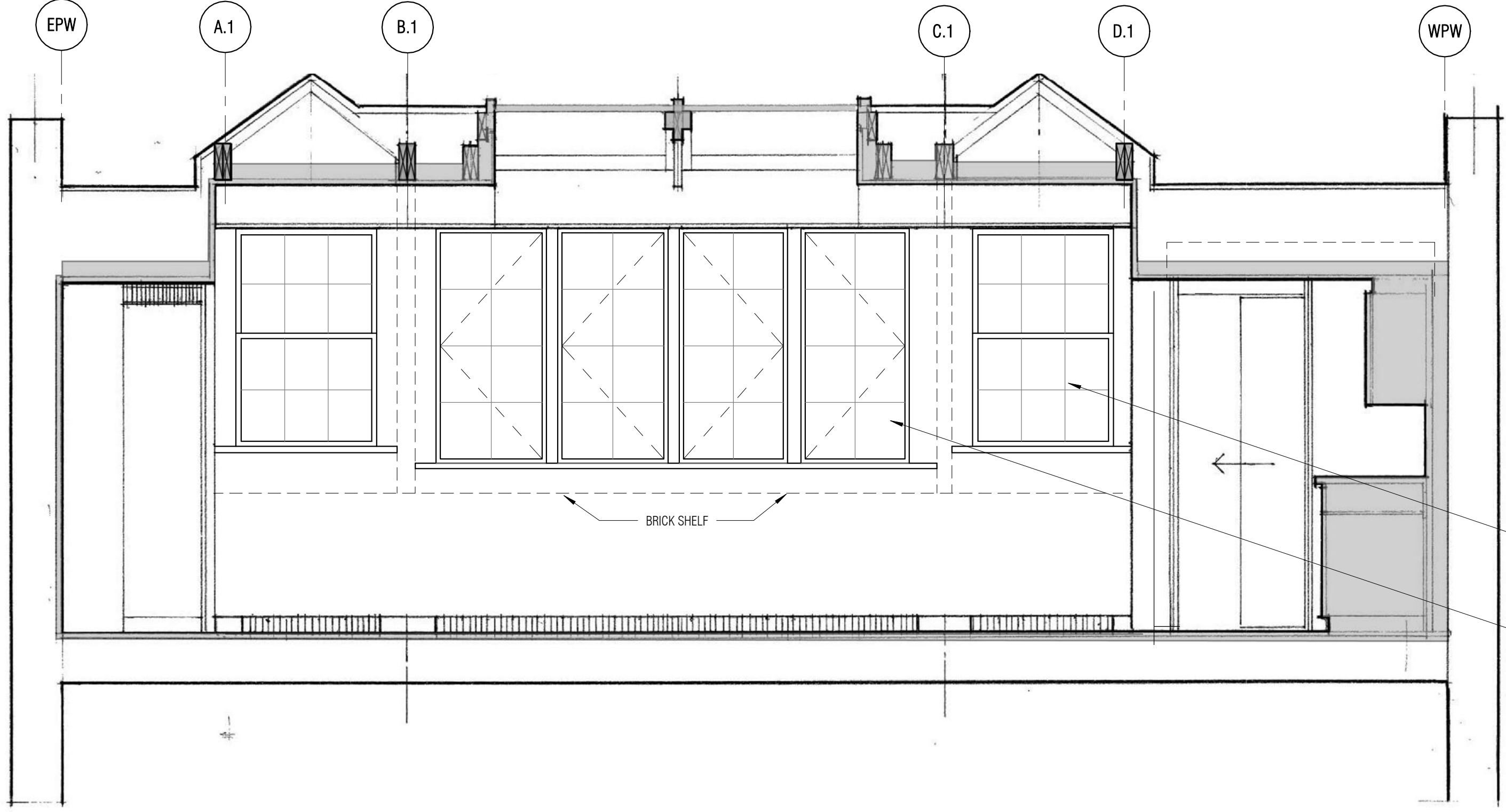

 EXIST. SILL HEIGHT  
 ELEV: 3'-8"  
 PROPOSED SILL HEIGHT  
 ELEV: 3'-4"  
  
 FINISHED FL  
 ELEV: 0'-0"



EXISTING DOUBLE-HUNG  
 WINDOWS TO REMAIN -  
 TYPICAL OF TWO  
  
 NEW DOUBLE-HUNG  
 WINDOWS IN EXPANDED  
 OPENING - TYPICAL OF THREE

2 SECTION - GREAT ROOM - LOOKING SOUTH - PROPOSED OPTION 1B - 3 DOUBLE-HUNG WINDOWS  
 1/2" = 1'-0"

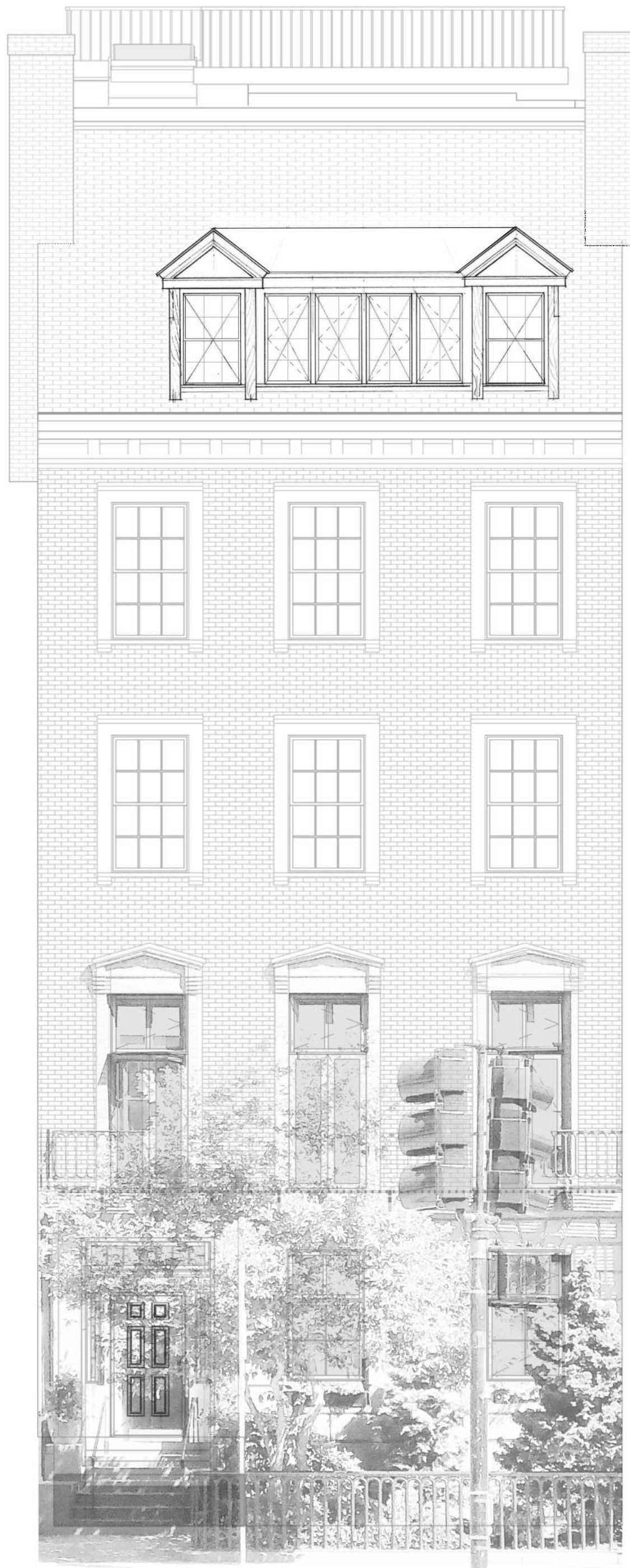

 EXIST. SILL HEIGHT  
 ELEV: 3'-8"  
 PROPOSED SILL HEIGHT  
 ELEV: 3'-4"  
  
 FINISHED FL  
 ELEV: 0'-0"



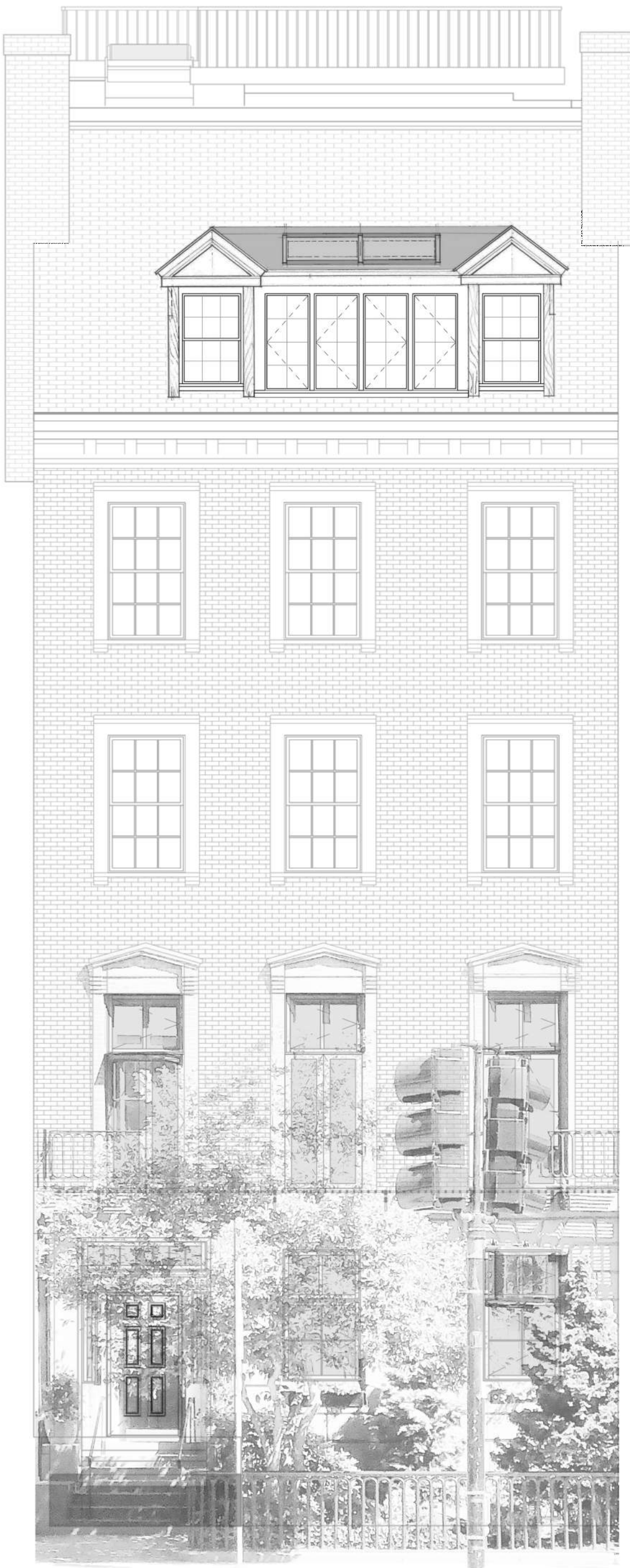
EXISTING DOUBLE-HUNG  
 WINDOWS TO REMAIN -  
 TYPICAL OF TWO  
  
 NEW CASEMENT WINDOWS  
 IN EXPANDED OPENING -  
 TYPICAL OF FOUR  
 (4 EQUAL DIVISIONS)

1 SECTION - GREAT ROOM - LOOKING SOUTH - PROPOSED OPTION 1A - 4 CASEMENT WINDOWS W/ 2 OVER 4 DIVISIONS  
 1/2" = 1'-0"

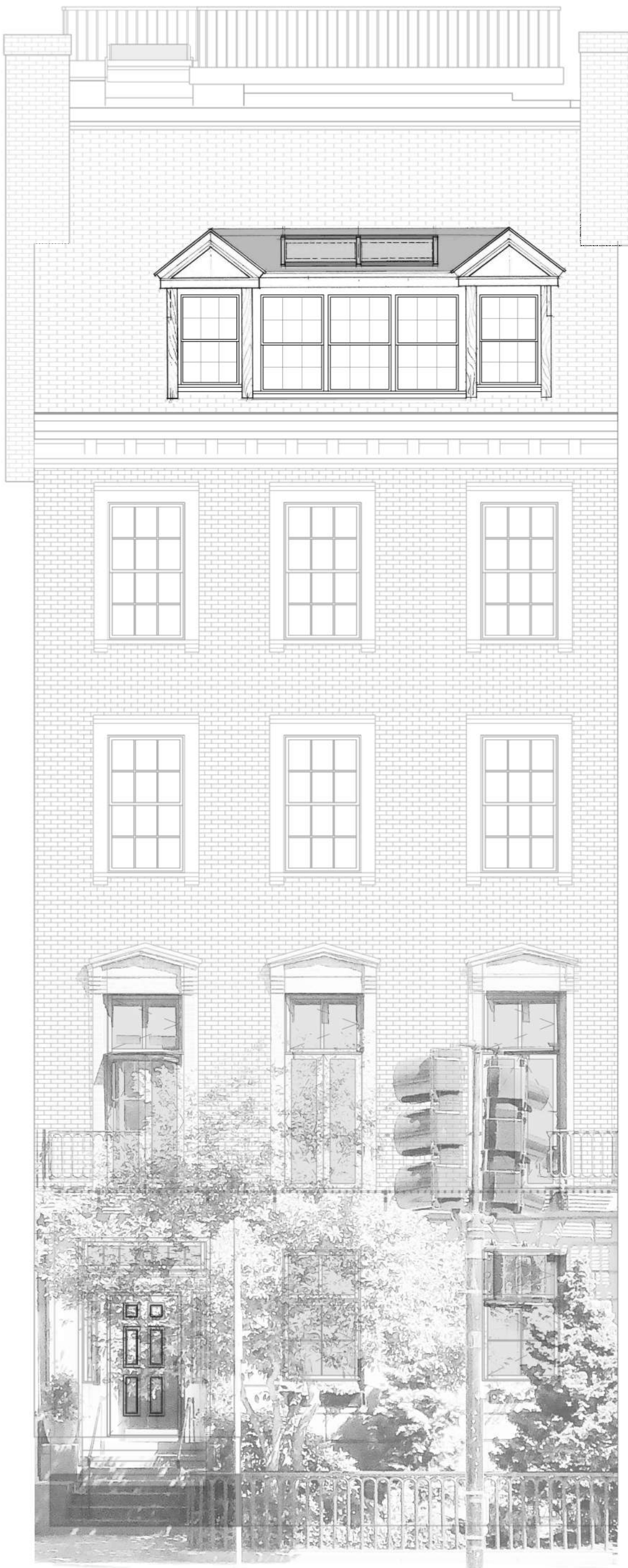
**EXISTING VS. PROPOSED  
BUILDING ELEVATIONS**



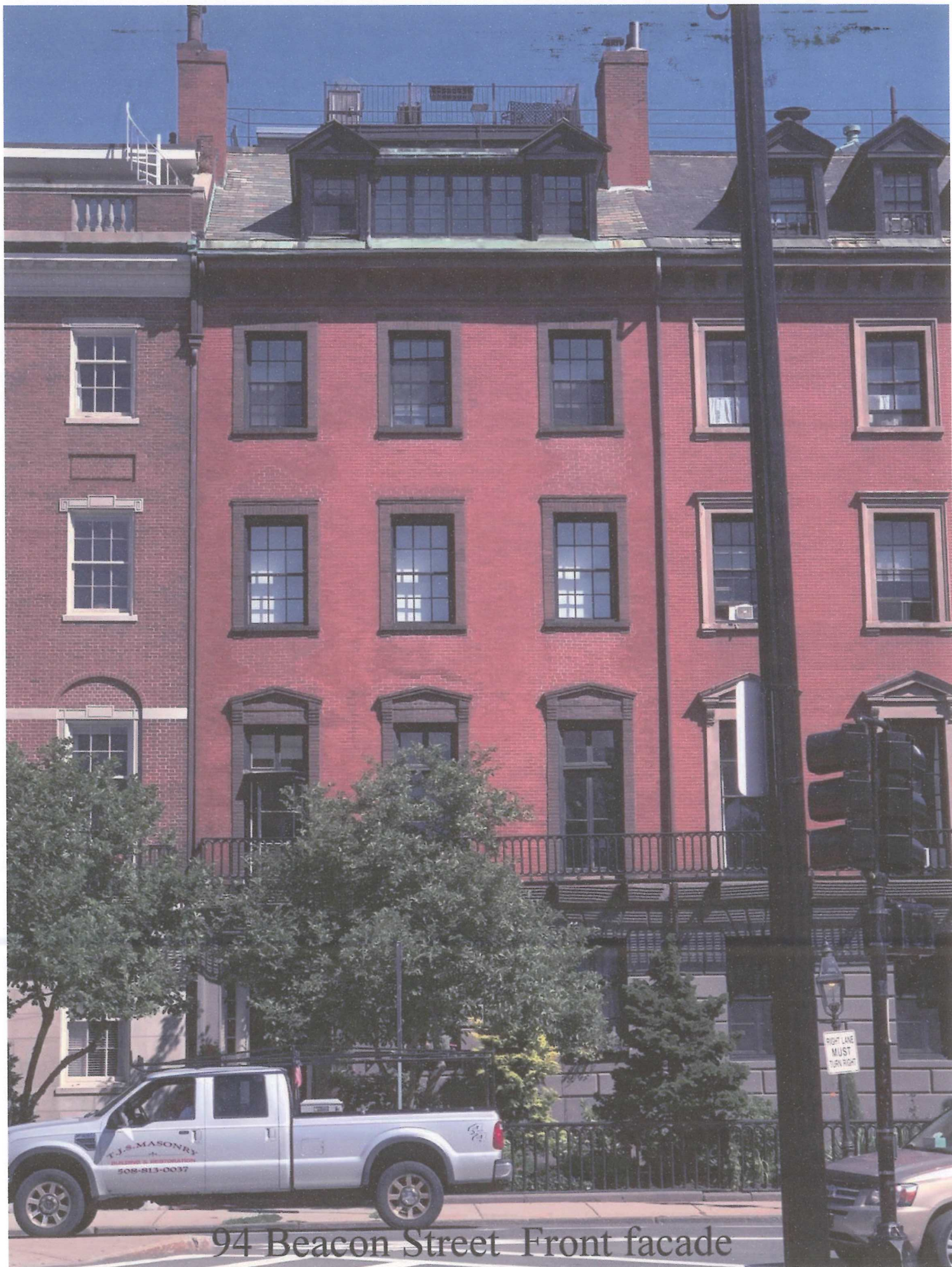
① EXISTING BUILDING ELEVATION @ 94 BEACON  
3/16" = 1'-0"



② PROPOSED BUILDING ELEVATION\_OPTION 1A  
3/16" = 1'-0"



③ PROPOSED BUILDING ELEVATION\_OPTION 1B  
3/16" = 1'-0"



94 Beacon Street Front facade



94 Beacon Street View of existing dormer



Double-hung  
Sash  
94 Beacon Street  
May 2019



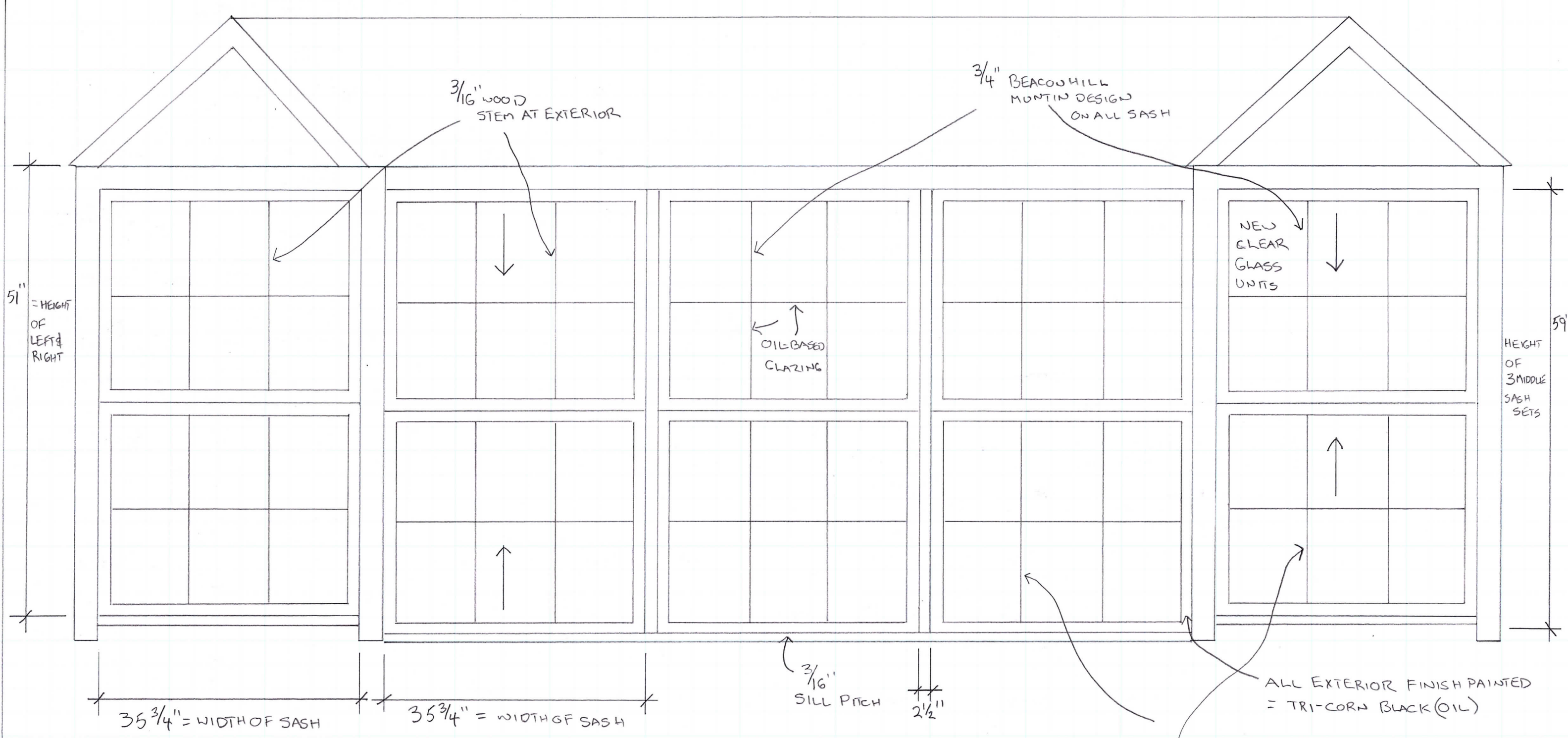


View of Sill  
94 Beacon Street  
May 2019



View of Casement Sill  
94 Beacon Street  
May 2019

149-13  
16



#94 BEACON STREET, UNIT # 5  
 BOSTON, M.A. 02108

---

FRONT ELEVATION

---

PROPOSED CONDITION

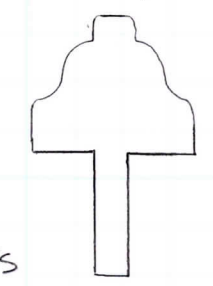
---

SHEET NO. 4 OF 4

Historic Window & Door Holdings  
 12 Forest Road, Junction 123&123A  
 P.O. Box 138  
 Alstead, N.H. 03602-0138

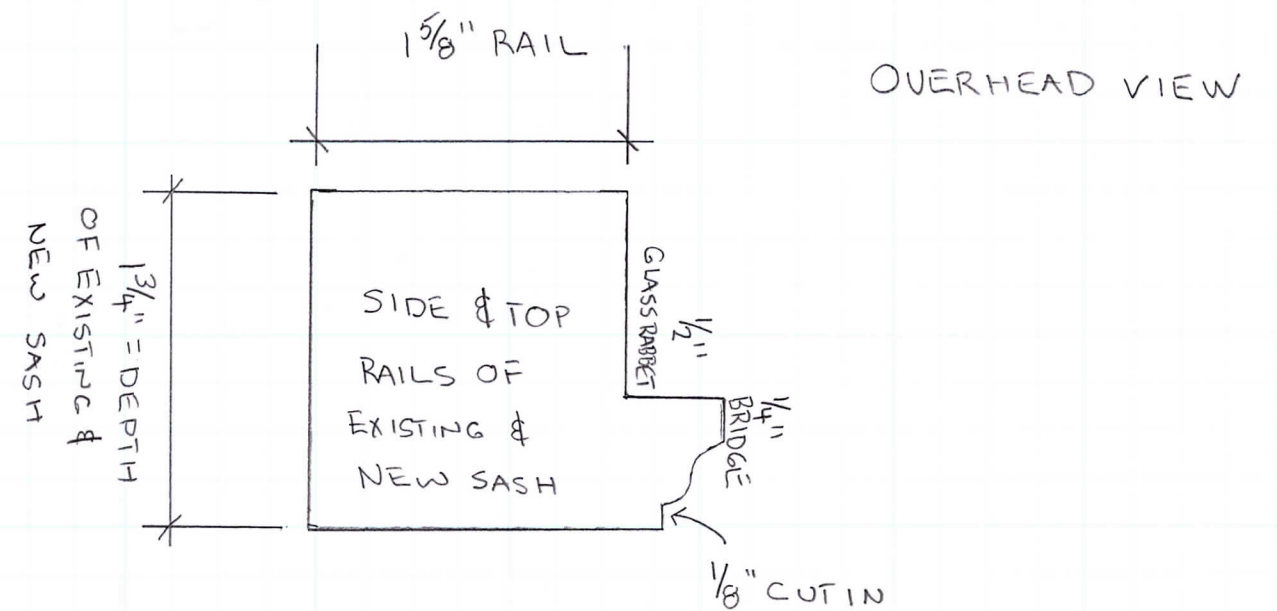
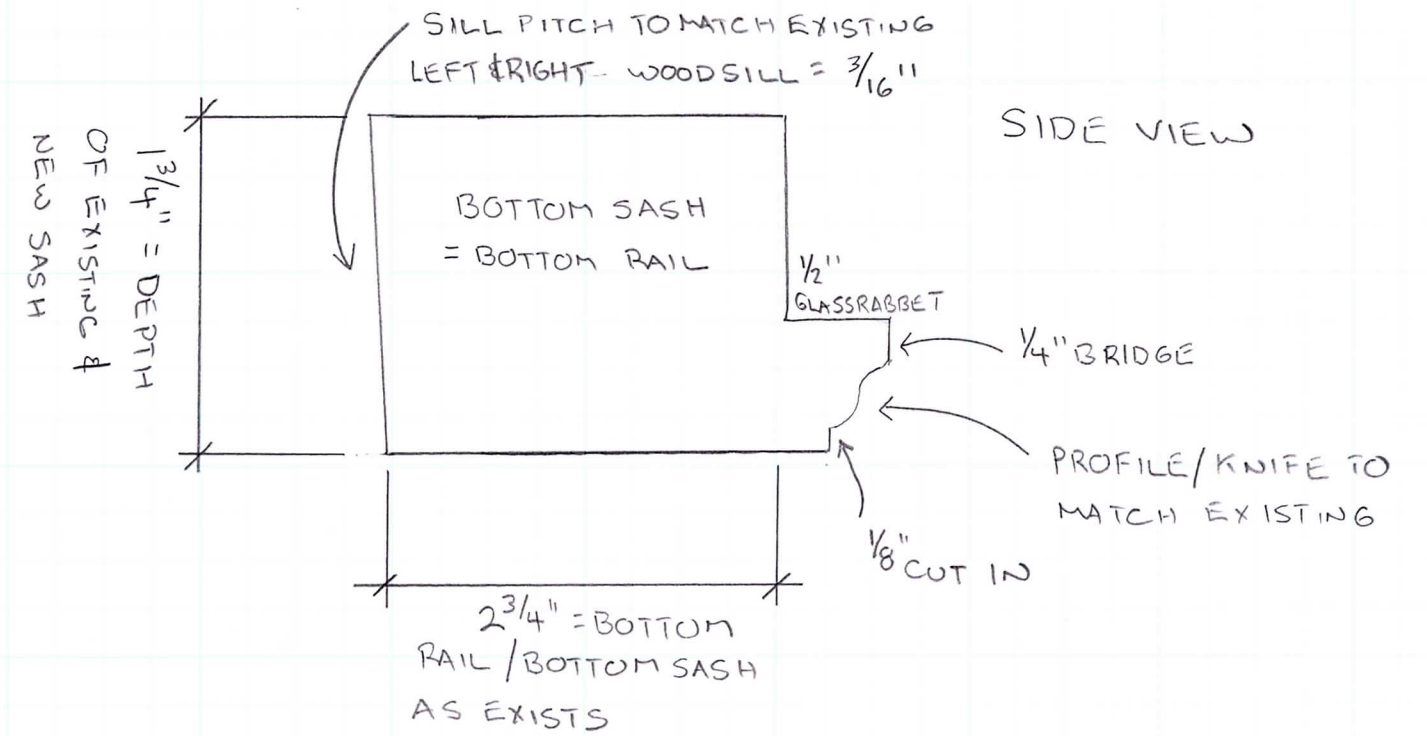
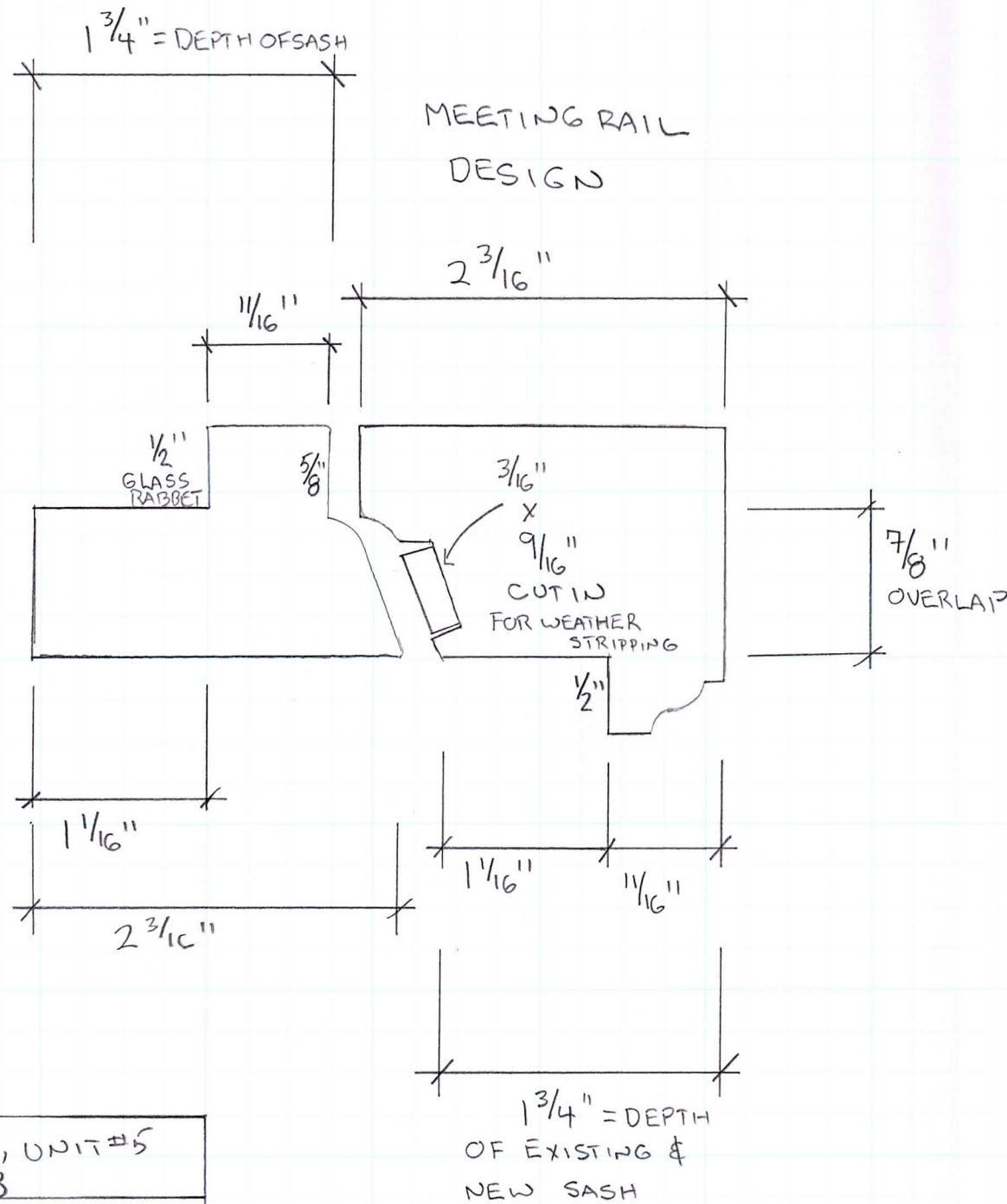
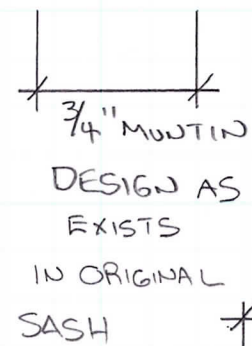
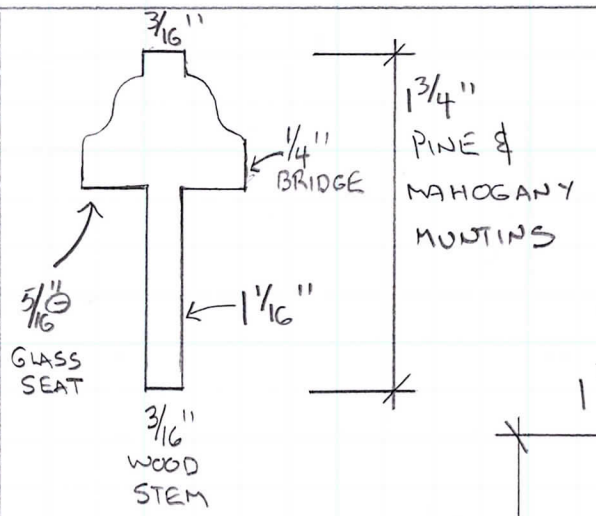
5 TOTAL 6/6 = DOUBLE HUNG SASH SETS  
 WOOD, 1 3/4" DEPTH OF SASH,  
 TRUE DIVIDED LIGHT = EQUAL OPENING  
 SIZE = WIDTH

3/4" MUNTIN DESIGN AS WOULD BE ORIGINAL  
 BEACON HILL MUNTIN DESIGN



ALL EXTERIOR FINISH PAINTED  
 = TRI-CORN BLACK (OIL)

BEACON HILL MUNTIN DESIGN

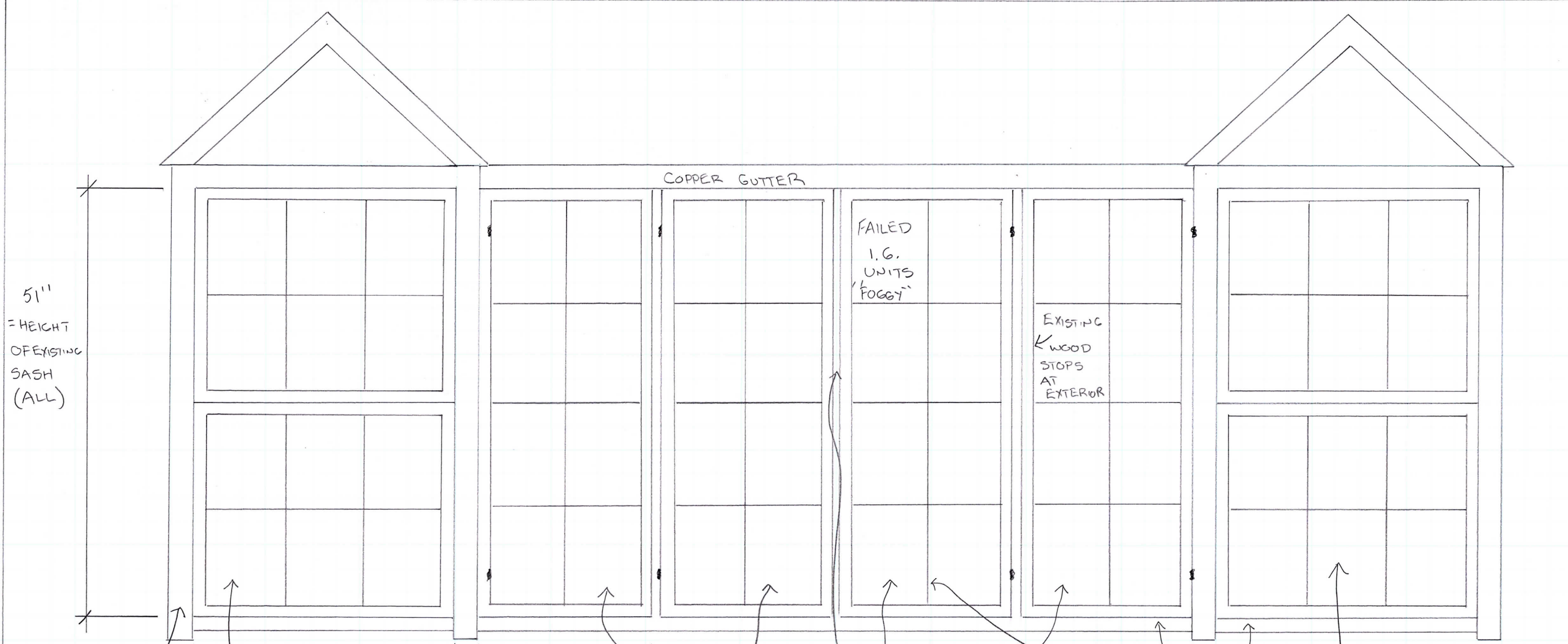


#94 BEACON STREET, UNIT #5  
BOSTON, M.A. 02108

SIDE VIEW OF ALL MILLED SASH PARTS

SASH PARTS / CUT AWAY

SHEET NO 1 OF 4.



51"  
= HEIGHT  
OF EXISTING  
SASH  
(ALL)

COPPER GUTTER

FAILED  
I.G.  
UNITS  
'FOGGY'

EXISTING  
WOOD  
STOPS  
AT  
EXTERIOR

BEYOND  
REASONABLE  
REPAIR: FACING  
BOARDS = PINE

\* 33" = WIDTH  
ONLY ORIGINAL

SASH SET = CORRECT  
BEACON HILL MUNTIN = 3/4"  
& CORRECT SIDE & TOP/BOTTOM  
RAILS

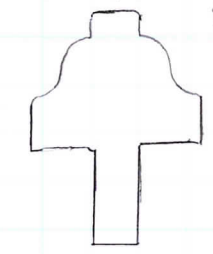
25 3/8" = WIDTH

NON ORIGINAL "SWING OUT"  
8 LIGHT CASEMENT  
WINDOWS = 1/8" MUNTIN  
DESIGN / NON OPERATIONAL  
BROKEN HARDWARE,  
FAILED I.G. UNITS  
= 90'S WINDOW

ALL 90'S LATCHES  
& LOCKING MECHANISMS  
BROKEN / NON OPERATIONAL

ALL EXISTING WOOD  
SILLS/PINE = ROTTED

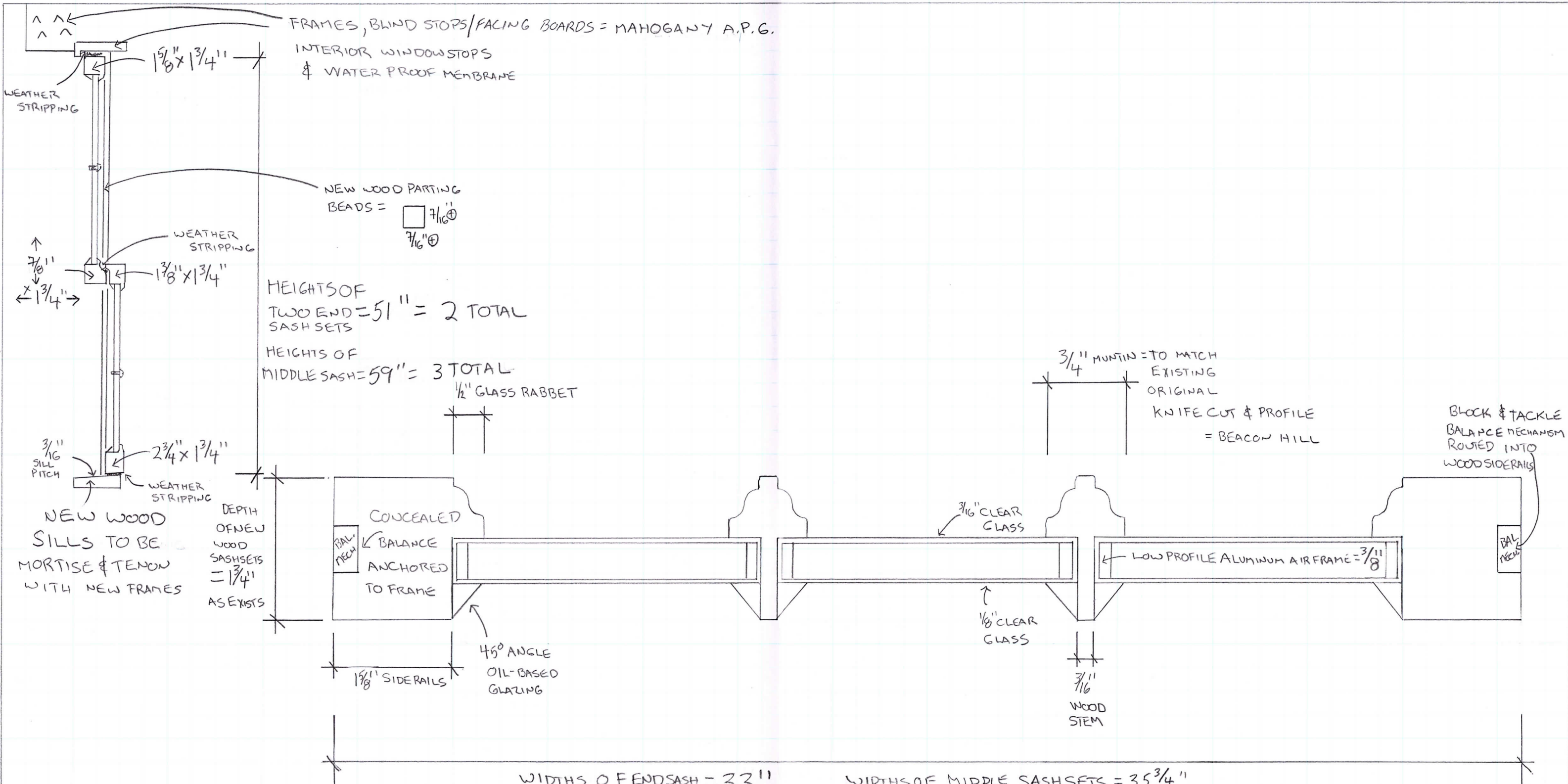
NON-ORIGINAL  
SASH SET =  
1/8" MUNTIN DESIGN,  
FAILED INSULATED  
GLASS UNITS,  
TRUTH HARDWARE  
= 90'S  
WINDOW



1/8" EXISTING NON-ORIGINAL  
MUNTIN DESIGN

#94 BEACON STREET, UNIT #5 BOSTON, M.A. 02108
FRONT ELEVATION = EXISTING DORMER
CURRENT CONDITION
SHEET NO. 3 OF 4

Historic Window & Door Holdings  
12 Forest Road, Junction 123&123A  
P.O. Box 138  
Alstead, N.H. 03602-0138



#94 BEACON STREET, UNIT #5  
 BOSTON, M.A. 02108

OVERHEAD CUTAWAY OF BUILD

OVER HEAD & SIDE VIEW

SHEET NO. 2 OF 4.

Historic Window & Door Holdings  
 12 Forest Road, Junction 123&123A  
 P.O. Box 138  
 Alstead, N.H. 03602-0138

ALL 5 SASH SETS = 6/16

\* PROPOSED NEW SASH TO MATCH EXISTING LEFT & RIGHT SIDE  
 NEW SASH = TRUE DIVIDED LIGHT, 3/4" MUNTIN  
 USING CLEAR GLASS WITH OPTIONAL PERIOD CORRECT  
 PAINT COLOR AT EXTERIOR TO MATCH ORIGINAL  
 SAMPLES WILL BE TAKEN & MATCHED

WIDTHS OF END SASH SETS = 33"  
 11  
 2 TOTAL

WIDTHS OF MIDDLE SASH SETS = 35 3/4"  
 3 TOTAL