

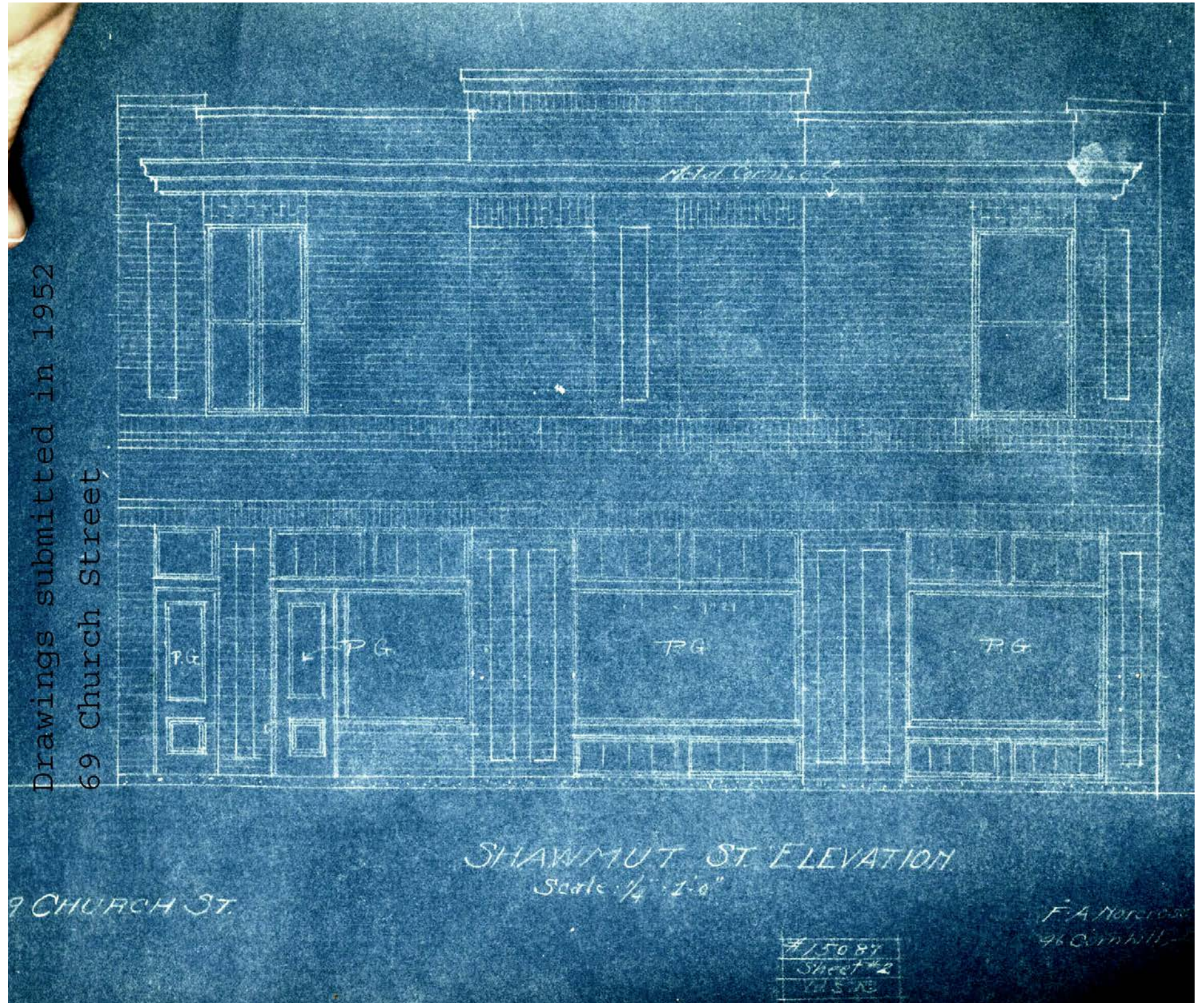


PHOTO- 1942
67-69 CHURCH STREET

RESTORE THE HISTORIC BASE

69 CHURCH STREET - BAY VILLAGE NEIGHBORHOOD - GROUND FLOOR COMMERCIAL & RESIDENTIAL PROPOSAL





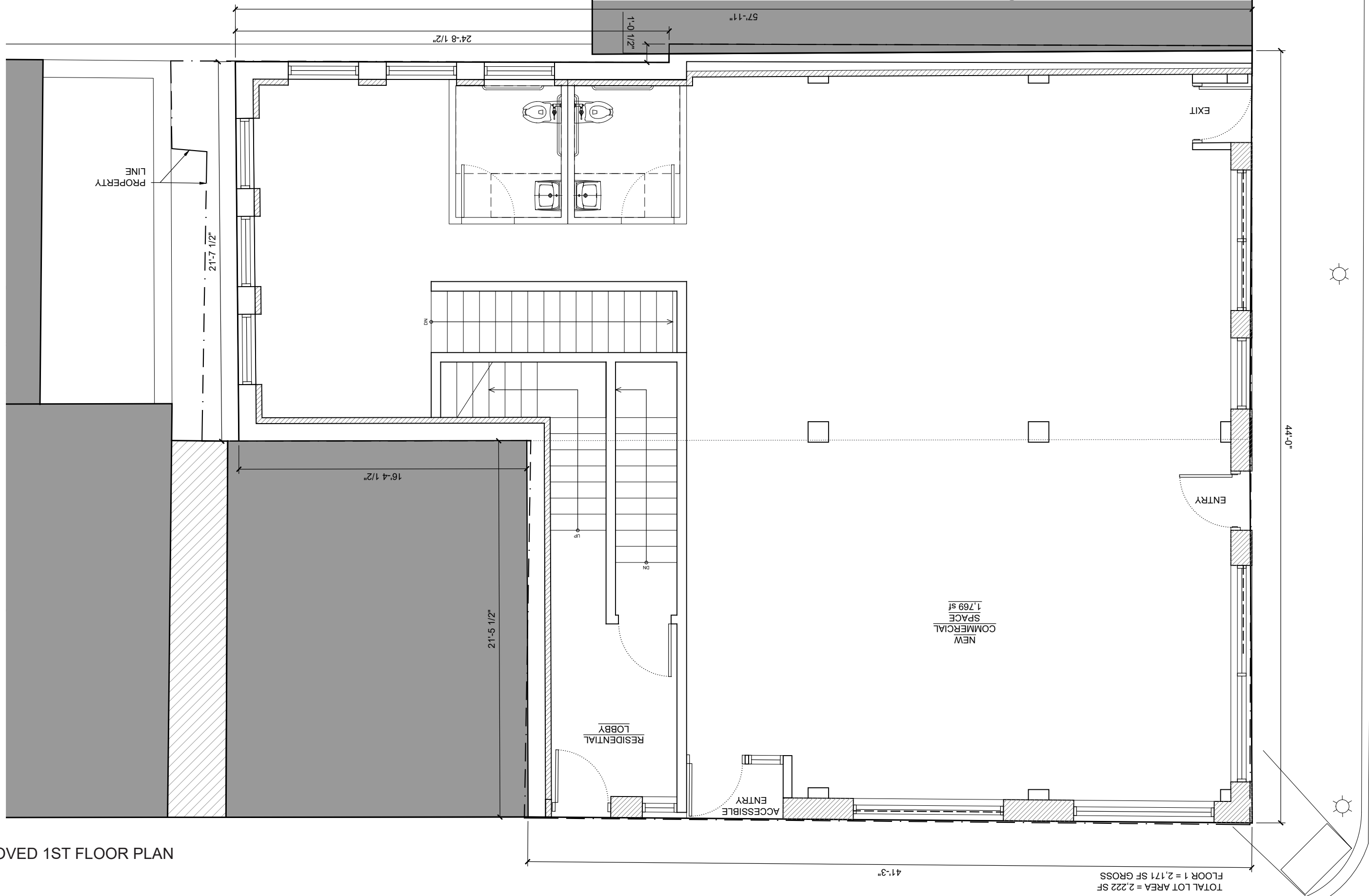
69 CHURCH STREET - BLUEPRINTS 1915-16 & 1952

RESTORE THE HISTORIC BASE

69 CHURCH STREET - BAY VILLAGE NEIGHBORHOOD - GROUND FLOOR COMMERCIAL & RESIDENTIAL PROPOSAL



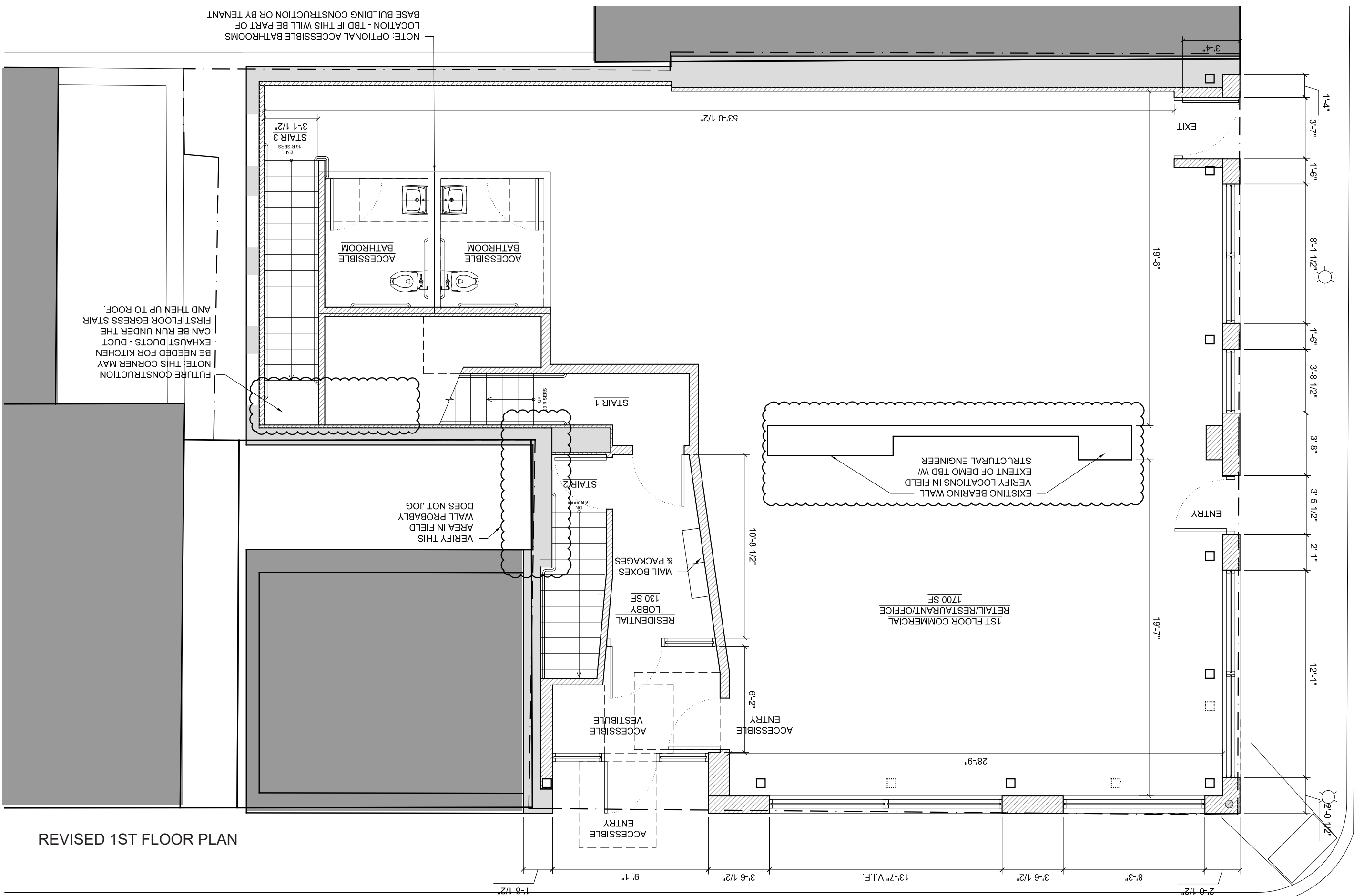
APPROVED FACADE RESTORATION



APPROVED 1ST FLOOR PLAN



PROPOSED REVISION TO FACADE RESTORATION



NOTE: OPTIONAL ACCESSIBLE BATHROOMS LOCATION - TBD IF THIS WILL BE PART OF BASE BUILDING CONSTRUCTION OR BY TENANT

FUTURE CONSTRUCTION
 NOTE: THIS CORNER MAY
 BE NEEDED FOR KITCHEN
 EXHAUST DUCTS - DUCT
 CAN BE RUN UNDER THE
 FIRST FLOOR EGRESS STAIR
 AND THEN UP TO ROOF.

VERIFY THIS
 AREA IN FIELD
 WALL PROBABLY
 DOES NOT JOG

EXISTING BEARING WALL
 VERIFY LOCATIONS IN FIELD
 EXTENT OF DEMO TBD W/
 STRUCTURAL ENGINEER

REVISED 1ST FLOOR PLAN



GLEN-GERY BRICK - ABERDEEN



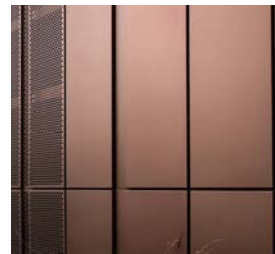
GLEN-GERY BRICK - OLD LONDON



GLEN-GERY BRICK - PATRIOT



FORMED ALUMINUM HUNG WALL PANEL SYSTEM



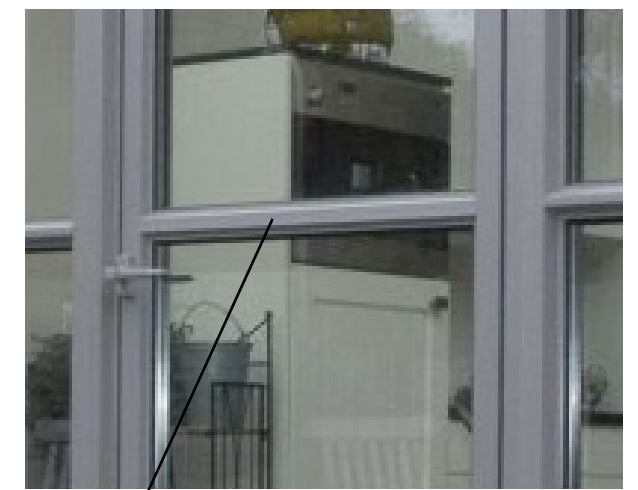
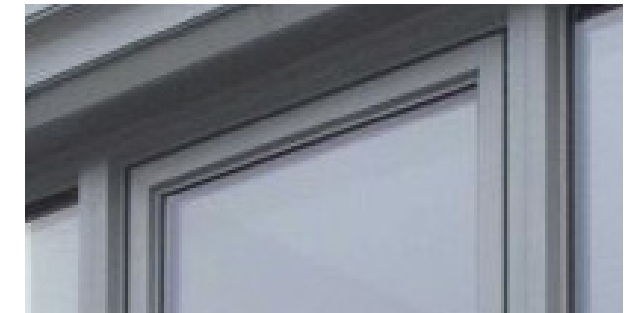
DRI-DESIGN FACADE PANEL - ANODIZED ALUMINUM BRONZE FINISHES COLOR RANGE BEING USED IN THE FACADE PANELS.

BRICK :
SAMPLES PENDING FIELD VERIFICATION FOR BEST MATCH



Dark Bronze

STOREFRONT AND ALUMINUM CLAD ANODIZED ALUMINIUM WINDOW



MULLIONS AND FRAMES HAVE ANGLED PROFILES

PANELS ARE EMBOSSED

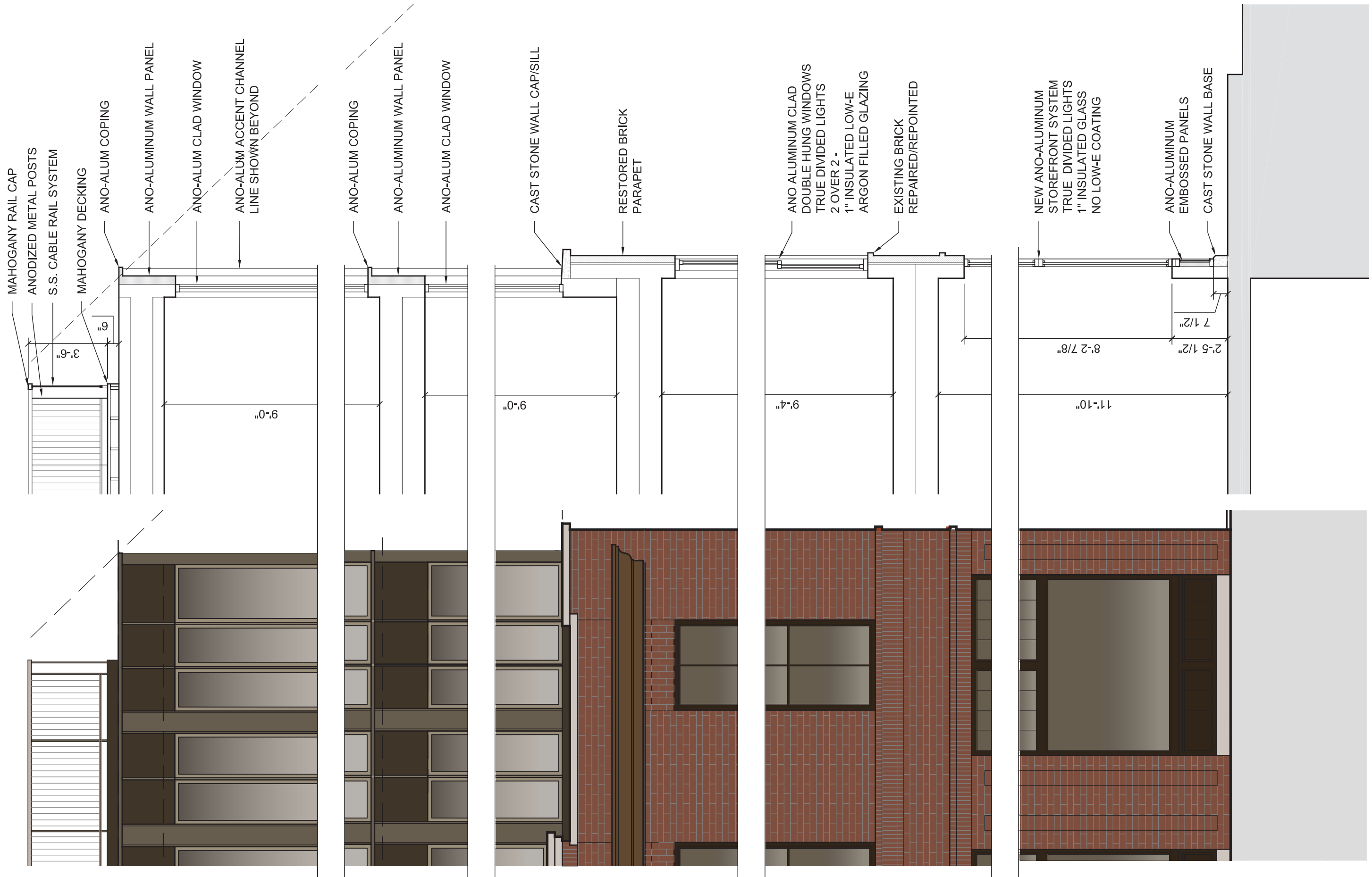
DYNAMIC ARCHITECTURAL ALUMINUM STOREFRONT

RESTORE THE HISTORIC BASE

MATERIALS AND FINISHES

69 CHURCH STREET - BAY VILLAGE NEIGHBORHOOD - GROUND FLOOR COMMERCIAL & RESIDENTIAL PROPOSAL





PROPOSED BASIC BUILDING SECTION DETAILS
 SCALE: 1/4"=1'-0"