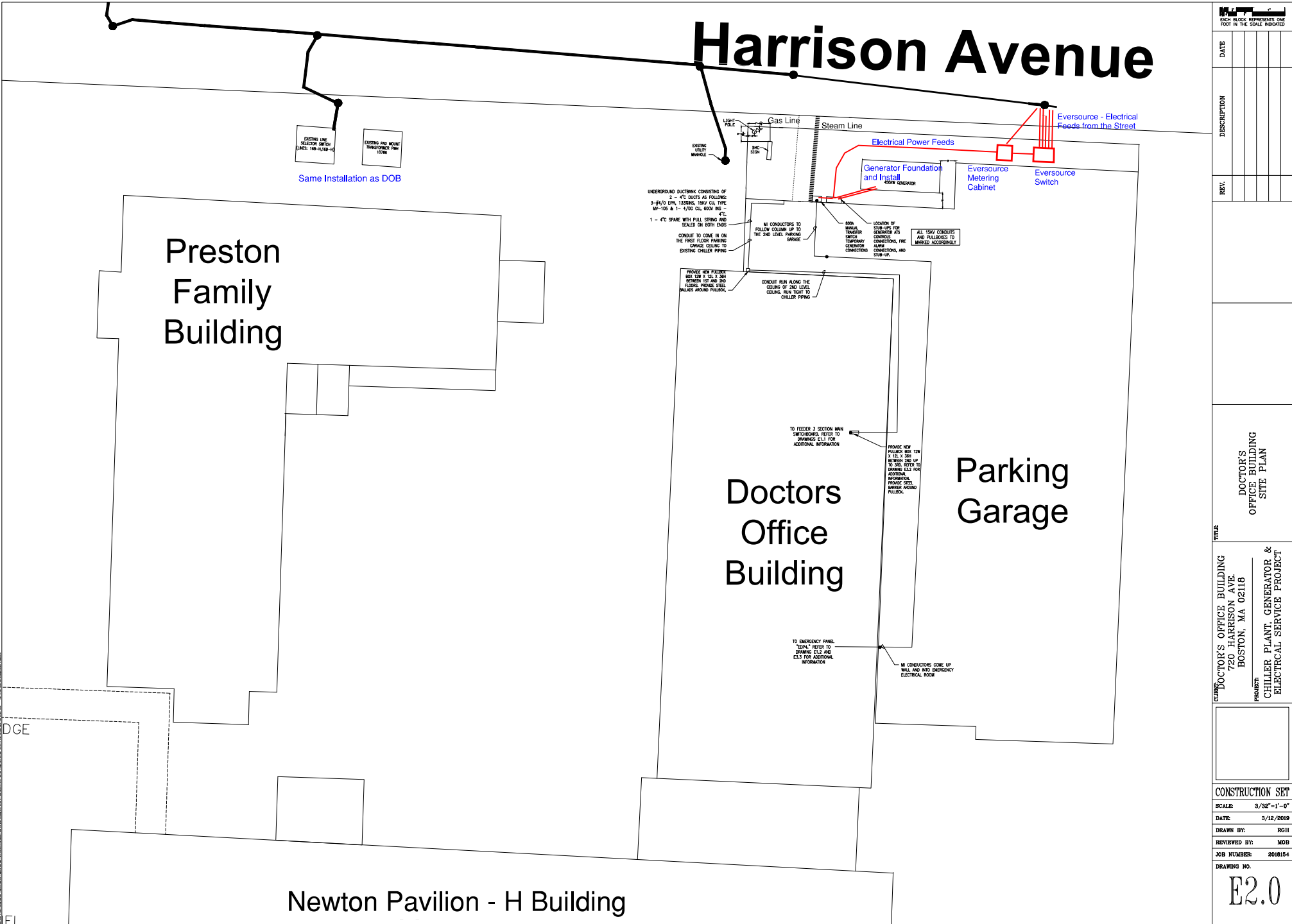


720 Harrison Ave - Doctor's Office Building



Harrison Avenue



1" = 100'
EACH BLOCK REPRESENTS ONE FOOT IN THE SCALE INDICATED

REV.	DESCRIPTION	DATE

REV.	DESCRIPTION	DATE

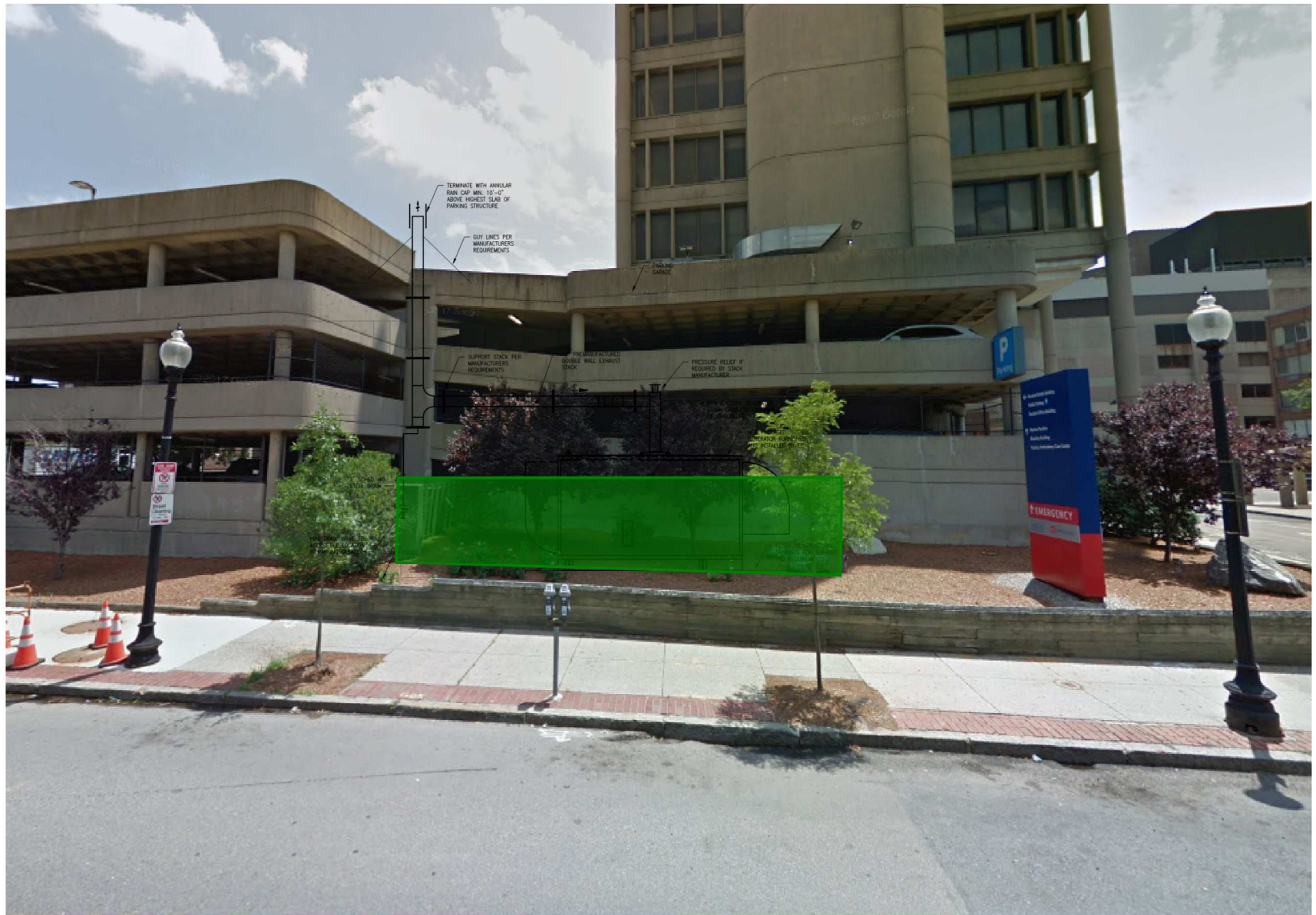
DOCTOR'S OFFICE BUILDING SITE PLAN

TITLE
 DOCTOR'S OFFICE BUILDING
 720 HARRISON AVE.
 BOSTON, MA 02118
 PROJECT
 CHILLER PLANT, GENERATOR &
 ELECTRICAL SERVICE PROJECT

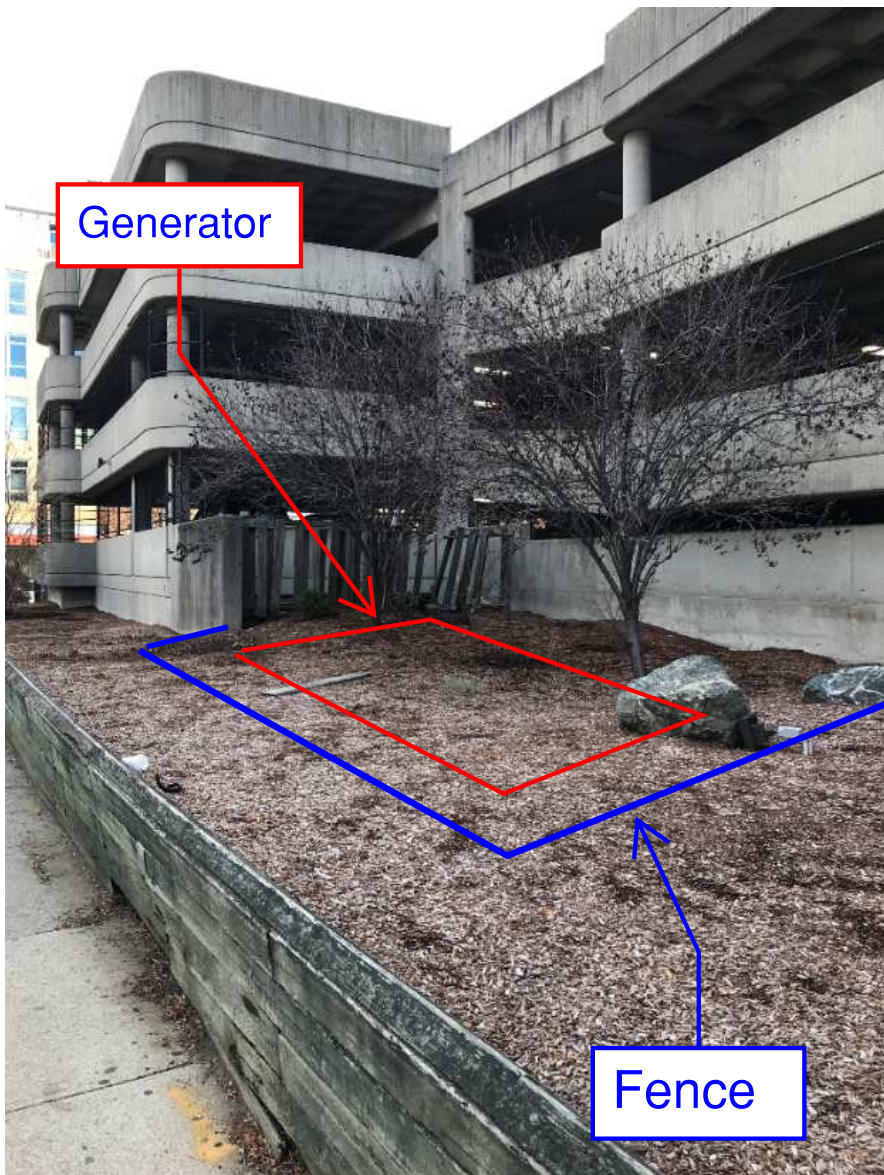


CONSTRUCTION SET
 SCALE: 3/32" = 1'-0"
 DATE: 3/12/2019
 DRAWN BY: RCH
 REVIEWED BY: MOB
 JOB NUMBER: 2018164
 DRAWING NO.

E2.0



Harrison Ave - Street View



Harrison Ave - View North

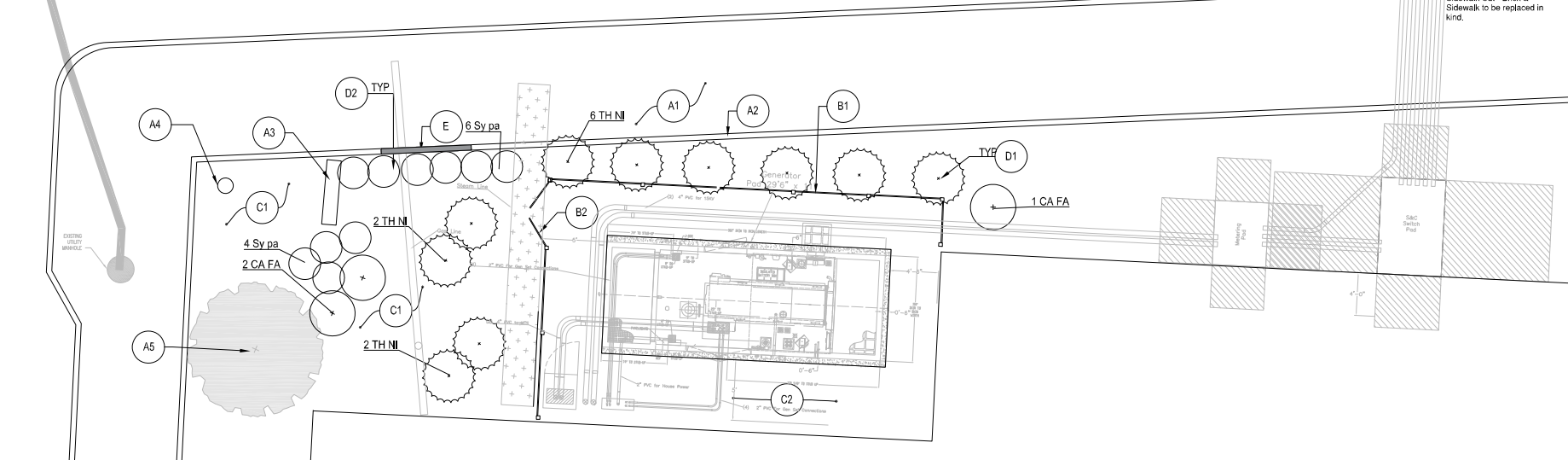


Harrison Ave - View South

720 Harrison Ave - Generator Stack Height Comparison



Harrison Avenue

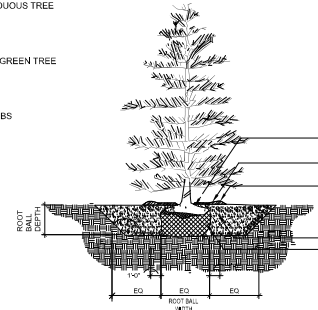
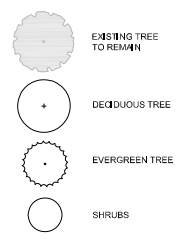


SITE PLAN
SCALE: 1/4" = 1'-0"

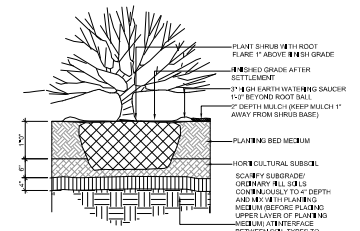
PLANTING SCHEDULE

QNTY	KEY	BOTANICAL NAME	COMMON NAME	SIZE	COMMENTS
10	TH NI	<i>Thuja occidentalis 'Nigra'</i>	American Arborvitae	10'x12'	B&B, matched
3	CA FA	<i>Carinus betulus 'Fastigata'</i>	Pyramidal European Hornbeam	2.5" Cal.	B&B, matched
10	Sy pa	<i>Syringa meyeri 'Palmer'</i>	Purple Lilac	3.5' x 4'	B&B, matched

PLANTING LEGEND



1 TREE PLANTING
SCALE: NOT TO SCALE



2 SHRUB PLANTING
SCALE: 3/4" = 1'-0"

MATERIALS LEGEND

SYM.	DESCRIPTION
(A1)	EXISTING CONCRETE SIDEWALK TO REMAIN
(A2)	EXISTING RETAINING WALL TO REMAIN
(A3)	EXISTING SIGN TO REMAIN
(A4)	EXISTING FLAGPOLE TO REMAIN
(A5)	EXISTING TREE TO REMAIN
(B1)	CEDAR FENCE + WALPOLE WOODWORKERS: 8" CHESAPEAKE FENCE, SHIPLE POST TOP CAPS (NON ORNAMENTAL) TO BE APPROVED BY OWNER AND LANDSCAPE ARCHITECT. FURNISH AND INSTALL WITH ALL FASTENERS AS REQUIRED BY MANUFACTURER. PROVIDE SHOP DRAWINGS.
(B2)	CEDAR FENCE GATE + WALPOLE WOODWORKERS: 8" CHESAPEAKE FENCE W/ 6" WIDE DOUBLE GATE. FURNISH AND INSTALL WITH ALL FASTENERS, HINGES AND LOCKING MECHANISMS AS REQUIRED BY MANUFACTURER. PROVIDE SHOP DRAWINGS.
(C1)	MULCH BED
(C2)	CRUSHED STONE SURFACING
(D1)	TREE PLANTING
(D2)	SHRUB PLANTING
(E)	REPAIR EXISTING TIMBER RETAINING WALL TO EXTENTS SHOWN

PLANTING NOTES

- LANDSCAPE ARCHITECT TO APPROVE PLANT MATERIAL PRIOR TO DELIVERY TO SITE.
- PLANT MATERIAL SHALL CONFORM TO THE AMERICAN STANDARD FOR NURSERY STOCK, PUBLISHED BY THE AMERICAN ASSOCIATION OF NURSERMEN, INC.
- NO SUBSTITUTIONS OF PLANT SPECIES WITHOUT LANDSCAPE ARCHITECT'S WRITTEN APPROVAL.
- SUBSTITUTIONS OF PLANT SPECIES SHALL BE A PLANT OF EQUIVALENT OVERALL FORM, HEIGHT AND BRANCHING HABIT, FLOWER, LEAF AND FRUIT, COLOR AND TIME OF BLOOM, AS APPROVED BY LANDSCAPE ARCHITECT.
- LOCATE AND VERIFY UTILITY LINE LOCATIONS PRIOR TO STAKING AND REPORT CONFLICT TO LANDSCAPE ARCHITECT.
- PLANNING DEMOLITION DEBRIS, GARBAGE, LUMPS OF CONCRETE, STEEL AND OTHER MATERIALS DELETERIOUS TO PLANTS HEALTH AS DETERMINED BY LANDSCAPE ARCHITECT SHALL BE REMOVED FROM ALL PLANTING AREAS.
- NO PLANTING TO BE INSTALLED BEFORE ACCEPTANCE OF ROUGH GRADING.
- ALL PROPOSED TREE LOCATIONS SHALL BE STAKED OR Laid OUT IN THEIR APPROXIMATE LOCATION BY THE CONTRACTOR. THE CONTRACTOR SHALL ADJUST THE LOCATIONS AS REQUESTED BY THE LANDSCAPE ARCHITECT TO ACCOUNT FOR SUBSURFACE UTILITIES AND OTHER FIELD CONDITIONS. FINAL LOCATIONS OF ALL PLANTS MUST BE APPROVED BY THE LANDSCAPE ARCHITECT PRIOR TO PLANTING.
- INSTALL PLANTS WITH ROOT FLARES FLUSH WITH FINISHED GRADE. IMMEDIATELY REPLANT PLANTS THAT SETTLE OUT OF PLUMB OR BELOW FINISHED GRADE.
- PLANT UNDER FULL TIME SUPERVISION OF CERTIFIED ARBORIST, NURSERYMAN, OR LICENSED LANDSCAPE ARCHITECT. PROVIDE WRITTEN VERIFICATION OF CERTIFICATION AND/OR LICENSE FOR LANDSCAPE ARCHITECT'S APPROVAL.
- WATER PLANTS THOROUGHLY AFTER INSTALLATION. A MINIMUM OF TWICE WITHIN THE FIRST 24 HOURS.
- REPAIR DAMAGE DUE TO OPERATIONS INSIDE AND OUTSIDE OF LIMIT OF WORK.
- VERIFY ALL DIMENSIONS IN THE FIELD PRIOR TO INSTALLATION.

CONSTRUCTION SET
SCALE: 1/8" = 1'-0"
DATE: 7/25/2019
DRAWN BY: BOJ
REVIEWED BY: BOJ
JOB NUMBER: 2018154
DRAWING NO: L1.0

CLIENT: DOCTORS, OFFICE BUILDING
700 HARRISON AVENUE
BOSTON, MA 02118

PROJECT: CHILLER PLANT, GENERATOR & ELECTRICAL SERVICE PROJECT

TITLE: DOCTORS OFFICE BUILDING SITE PLAN

DATE	DESCRIPTION	REV.

EACH BLOCK REPRESENTS ONE FOOT IN THE SCALE INDICATED

Carpinus betulus 'Fastigiata'



Thuja-occidentalis-Ninja



Syringa meyeri 'Palibin'



Doctor's Office Building - 720 Harrison Ave - Fencing

Chosen Option - Stained Wood Fence



CUSTOMER
PLEASE PROVIDE MISSING
INFORMATION WITH RETURNED
DRAWINGS.

NOTES:

- SEE PRITCHARD BROWN SPEC. NO. 2130 FOR DETAILED DESIGN & CONSTRUCTION CRITERIA
- ENCLOSURE USE - GENERATOR CIS-450 KW, 450 KV, 480V
- DIMENSIONS: 157 15/16"L x 64 1/16"W x 83 3/4"H
- WEIGHT OF GENSET ONLY: 8,497 LBS. (ESTIMATED)
- ESTIMATED SHIPPING WEIGHT, COMPLETE PACKAGE: 33,000 LBS.
- TOTAL AIRFLOW REQUIRED: 26,906 CFM
- ENGINE EXHAUST TEMP: 917°F
- ENCLOSURE EXTERIOR COLOR: REFER TO P.B. COLOR CHART. ()
- INSULATION: 6" ACOUSTIC COMPOSITE (CRITICAL ATTENUATION)
- LINING: MILL-FINISHED PERFORATED ALUMINUM
- BASE TYPE - 480 GALLON CAPACITY UL LISTED FUEL TANK
- 550 GALLON RUPTURE BASIN
- DIAMOND PLATE FINISHED FLOOR
- 4-PT LIFT BASE
- 2 LAYERS 3/4" DSB
- THE ENCLOSURE IS DESIGNED TO REDUCE MECHANICAL SOURCE NOISE BY AN AVERAGE OF 45 dB(A) AT 1 METER TO ACHIEVE 60 dB(A) AT 9 METER BASED ON THE GENSET SOURCE NOISE OF 104.4 dB(A) AT 3.3' AND FREE-FIELD CONDITIONS. EXHAUST NOISE WILL BE REDUCED TO AN ESTIMATED 75.1 dB(A) AT 3.3 FEET.
- ISOLATORS (6) - MAKE: ACE
- MODEL: 821K
- OPERATING HEIGHT: 6'
- MOUNTING DIST: 9"
- SILENCER - MAKE: GT EXHAUST
- MODEL: 501-C2-7108-2-NB-FM
- SIZE: 8" ASA FLANGE
- BODY SIZE: 98"L x 62"W x 16"D
- WEIGHT: 1250 LBS
- STAINLESS STEEL RAIN COLLAR
- IBC COMPLIANCE CERTIFICATION & PE STAMPED DRAWINGS & CALCULATIONS (NA)
WHenever available, any & all other equipment must be certified and labeled
- IBC GENERAL REQUIREMENT: IBC 2015, GROUP II
SEE SPECIFICATION 26, 32, 13 PAGE 203 FOR SPECIFIC SEISMIC LOAD REQUIREMENTS.

- PE STAMP SHALL INCLUDE CALCULATIONS FOR THE BASE LIFTING PLATES.
- SITE ADDRESS FOR PE STAMP - 720 HARRISON AVE, BOSTON MA02118.
- WARNING SIGNS (TBD).
- PE STANDARD WARRANTY EXTENDED TO 2 YEARS.
- FIRE EXTINGUISHER w/WALL MOUNTING BRACKET) TYPE 3A, 40B, C.
- RACK & HOOD ASSEMBLY FOR HEARING & EYE PROTECTION DEVICES BY OTHERS.
- TIE DOWN HOLES IN BASE RAIL
- MANUAL BALL VALVES SHALL BE APPLD SERIES 77. VALVES TO BE LABELED WITH PURPOSE.
- ALL FUEL OIL PLUMBING SHALL BE LABELED WITH IDENTIFICATION & PROVIDED WITH INDICATION OF DIRECTION OF FLOW.

ELECTRICAL PACKAGE:

- PRITCHARD BROWN FURNISHED & WIRED *
- ALL WIRING IN SURFACE MOUNTED ENT *
- 100A, 3Ø, 120/208V 3Ø SPACE PANELBOARD w/MAIN
- FLOOR VAPORTIGHT LIGHTS 4 FT. 2 TUBE w/ELEC. BALLAST
- LIGHT SWITCHES, 3-WAY
- 12/24V DC OPERATED VAPORTIGHT INCAND. LIGHTS
- TIMER SWITCH FOR DC LIGHTS (0 - 60 MIN.)
- RECEPTACLES: GFCI, INTERIOR, 125V, 20A, DUPLEX
- DIGITAL FUEL GAUGE, HIGH, LOW, CRITICAL LOW & RUPTURE CONTACTS
- 4 TO 20MA OUTPUT CARD
- VISUAL & AUDIBLE ALARM w/SILENCE BUTTON FOR TANK FULL INDICATION
- EMERGENCY E-STOP/BREAKGLASS STATION w/AT LEAST 2 CONTACTS
- ADDITIONAL FIELD INSTALLED E-STOP
- EMERGENCY E-STOP/BREAKGLASS STATION (SHIPPED LOOSE)
- SMALL CUSTOMER CONNECTION BOX FOR ALARMS, ETC.
- 5 KW HEATERS w/T/STAT & CUT-OUT RELAY: 208V 3Ø
- BATTERY PAD HEATER w/THERMOSTAT (LEAD ACID)
- 16" 1000CFM EXHAUST FAN w/T/STAT AND GRAVITY DAMPER
- INLET DAMPER MOTOR WIRED TO PANELBOARD
- EXTERIOR LED WALPACK LIGHT w/PHOTOCELL, 120V, 26W
- LIGHT SWITCH (SINGLE POLE) - INTERIOR FOR EXTERIOR LIGHTS
- FOUR INCH SQUARE ELECTRICAL BOXES FOR FIELD INSTALLED FIRE ALARM SYSTEM LOCATION TO BE COORDINATED
- EMPTY CONDUIT SUPPORTING FIRE ALARM TIED TO THE J-BOX ON 1" WALL
- MILTON CAT FURNISHED, PRITCHARD BROWN WIRED *
- BATTERY CHARGER, AC/DC
- BATTERY CHARGER ALARMS TO J-BOX OR GENSET
- GENERATOR STRIP HEATER
- JACKET WATER HEATER

SYSTEM INTEGRATION DETAILS:

- PB FURNISHED EQUIPMENT & SERVICES *
- SILENCER, 8" EXTREME GRADE COOL. SERIES
- EXHAUST FLEX, ALL STAINLESS STEEL
- EXHAUST ELBOW w/2 FLANGES, DRAIN, ALL STAINLESS STEEL
- TERMINATED w/FLANGE ABOVE ROOF FOR CONTINUATION BY OTHERS
- INSULATION BLANKET FOR EXHAUST FLEX & ELBOW
- EXTENDED LUBE OIL & COOLANT DRAINS TO EXTERIOR
- CRANKCASE BREATHER TUBE TO DUCT ADAPTER
- PIPE FUEL TANK TO GENSET
- FIBERGLASS BATTERY BOX
- RACOR FUEL FILTER/WATER SEPARATOR - 75/1000 FHY30 COMPLEXO
- EXTEND SILENCER DRAIN TO EXTERIOR w/THREADED SCHEDULE 40 STAINLESS STEEL PIPE w/STAINLESS STEEL BALL VALVE
- MILTON CAT FURNISHED EQUIPMENT INSTALLED BY PB *
- GENSET
- VIBRATION ISOLATORS
- SET OF BATTERIES, RACK AND CABLES
- BATTERY CHARGER

SHIPPED LOOSE ITEMS:

- EXHAUST PENTHOUSE FOR FIELD INSTALLATION (400 LBS.)
- GENSET
- VIBRATION ISOLATORS
- EXHAUST EXTENSION SUPPORT
- LED WALPACK EXTERIOR LIGHTS
- EMERGENCY E-STOP/BREAKGLASS STATION

CUSTOMER
PLEASE PROVIDE SPECIFIC
REQUIRED LANGUAGE FOR
ENCLOSURE WARNING LABEL(S).

**DRAWING FOR APPROVAL
NOT FOR CONSTRUCTION PURPOSES**

APPROVED AS DRAWN
 APPROVED AS NOTED
 REVISE AS NOTED, RESUBMIT

SIGNATURE

DATE

NAME (PLEASE PRINT)

TITLE

DOB HARRISON STREET - BOSTON, MA



CUSTOMER:
MILTON CAT

REFERENCE: DOB HARRISON STREET - BOSTON, MA

UNITS REQ'D: (1) DNE

PATENT NO. 3,888,592
PRITCHARD-BROWN, LLC CLAIMS PROPRIETARY RIGHT IN THE MATERIAL DISCLOSED HEREON. THIS DRAWING IS ISSUED FOR SALES INFORMATION ONLY AND MAY NOT BE REPRODUCED OR USED TO MANUFACTURE ANYTHING SHOWN HEREON WITHOUT PERMISSION FROM PRITCHARD-BROWN, LLC TO THE USER.



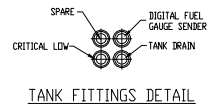
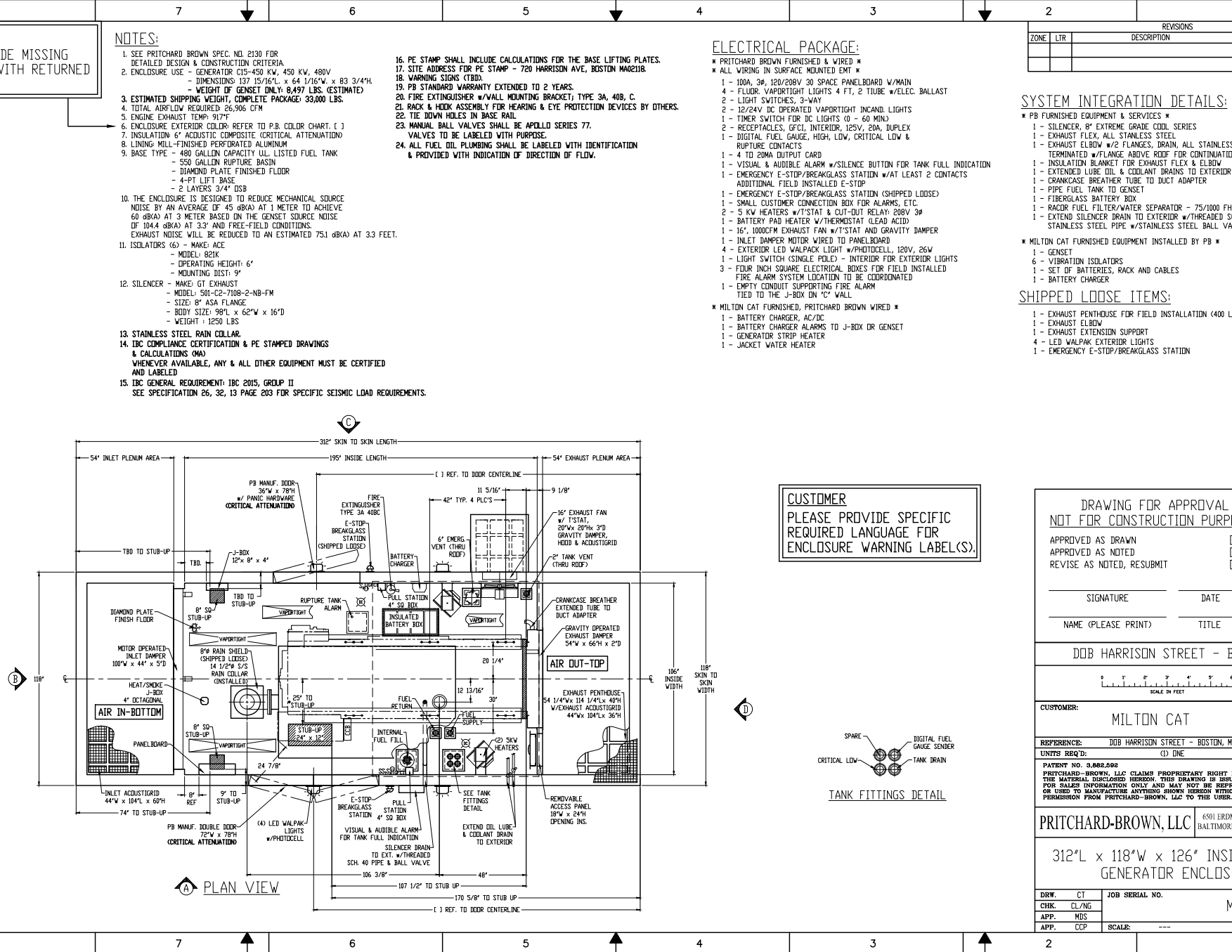
PRITCHARD-BROWN, LLC 6501 ERDMAN AVE. BALTIMORE, MD 21205

DATE: 03/18/19

**312"L x 118"W x 126" INSIDE HEIGHT
GENERATOR ENCLOSURE**

DRW. CT	JOB SERIAL NO.	
CHK. CL/NG		M191012
APP. MDS		
APP. CCP	SCALE: ---	SHEET 1 OF 8

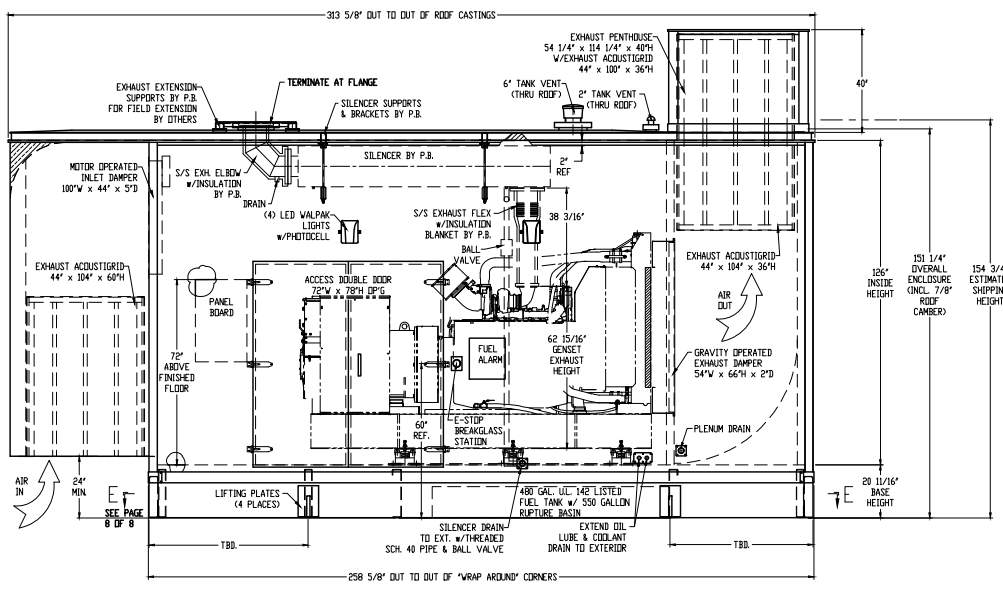
created using AutoCAD



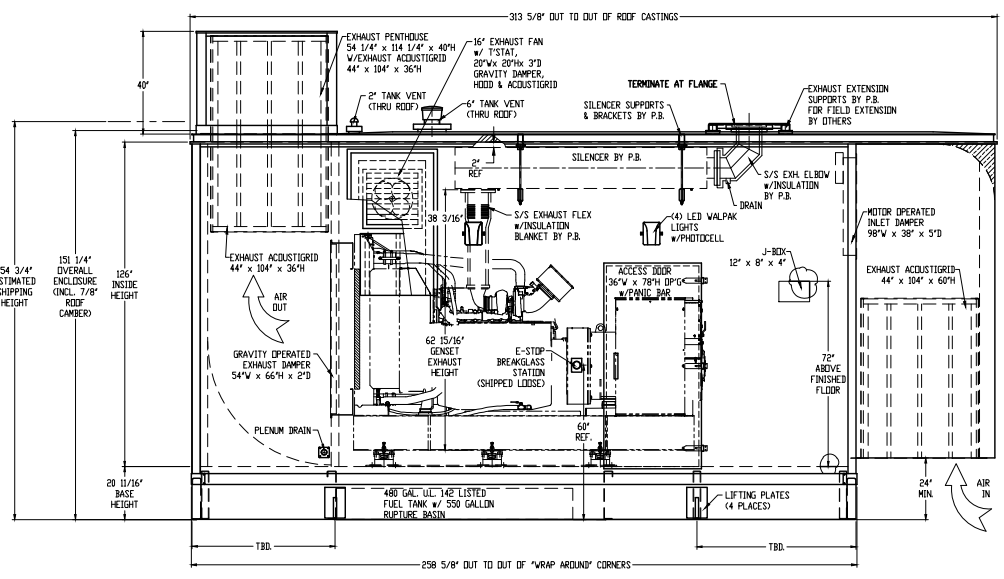
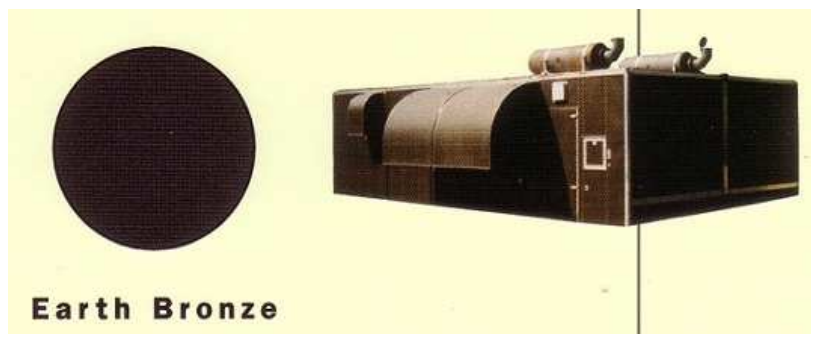
PLAN VIEW

created using AutoCAD

REVISIONS				
ZONE	LTR	DESCRIPTION	DATE	APP'D



"A" SIDE WALL



"C" SIDE WALL

DRAWING FOR APPROVAL
NOT FOR CONSTRUCTION PURPOSES

APPROVED AS DRAWN

APPROVED AS NOTED

REVISE AS NOTED, RESUBMIT

SIGNATURE

DATE

NAME (PLEASE PRINT)

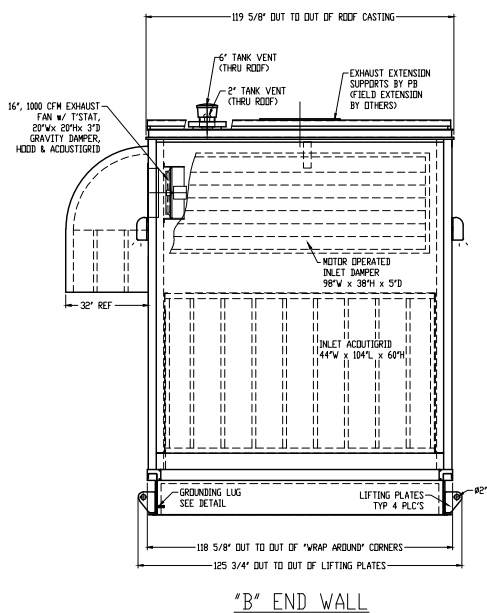
TITLE

DOB HARRISON STREET - BOSTON, MA		UL #142 File No. M110638
SCALE IN FEET		THIRD-ANGLE PROJECTION
CUSTOMER: MILTON CAT		
REFERENCE: DOB HARRISON STREET - BOSTON, MA		
UNITS REQ'D: (1) DNE		
PATENT NO. 3,888,592 PRITCHARD-BROWN, LLC CLAIMS PROPRIETARY RIGHT IN THE MATERIAL DISCLOSED HEREON. THIS DRAWING IS ISSUED FOR SALES INFORMATION ONLY AND MAY NOT BE REPRODUCED OR USED TO MANUFACTURE ANYTHING SHOWN HEREON WITHOUT PERMISSION FROM PRITCHARD-BROWN, LLC TO THE USER.		
PRITCHARD-BROWN, LLC		DATE: 03/18/19
6501 ERDMAN AVE. BALTIMORE, MD 21205		
312"L x 118"W x 126" INSIDE HEIGHT GENERATOR ENCLOSURE		
DRW. CT	JOB SERIAL NO.	
CHK. CL/NG	M191012	
APP. MDS		
APP. CCP	SCALE: ---	SHEET 2 OF 8

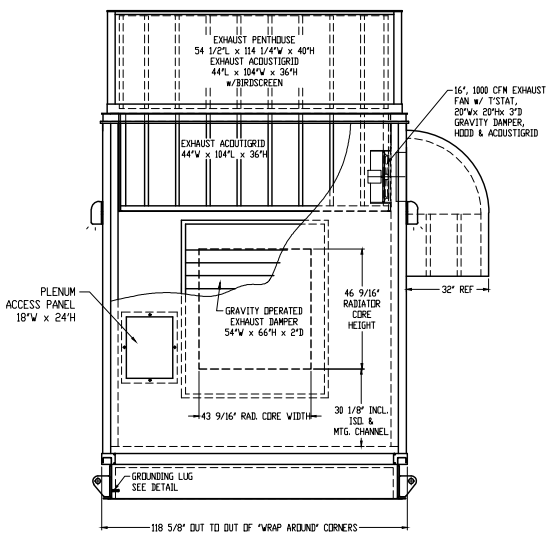
created using AutoCAD

REVISIONS				
ZONE	LTR	DESCRIPTION	DATE	APP'D

8 7 6 5 4 3 2 1



"B" END WALL



"D" END WALL

DRAWING FOR APPROVAL
NOT FOR CONSTRUCTION PURPOSES

APPROVED AS DRAWN
 APPROVED AS NOTED
 REVISE AS NOTED, RESUBMIT

SIGNATURE DATE

NAME (PLEASE PRINT) TITLE

DOB HARRISON AVE - BOSTON, MA



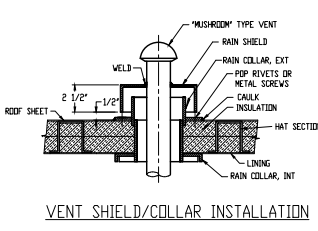
UL #142
File No. U
M110593

CUSTOMER:	MILTON CAT	THIRD-ANGLE PROJECTION
REFERENCE:	DOB HARRISON AVE - BOSTON, MA	REVISION
UNITS REQ'D:	(D) DNE	
PATENT NO. 5,888,592	PRITCHARD-BROWN, LLC CLAIMS PROPRIETARY RIGHT IN THIS MATERIAL DISCLOSED HEREON. THIS DRAWING IS ISSUED FOR SALES INFORMATION ONLY AND MAY NOT BE REPRODUCED OR USED TO MANUFACTURE ANYTHING SHOWN HEREON WITHOUT PERMISSION FROM PRITCHARD-BROWN, LLC TO THE USER.	

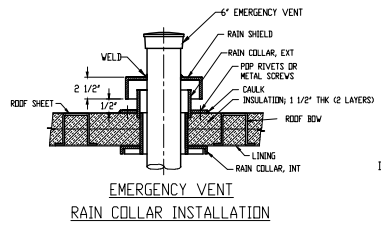
PRITCHARD-BROWN, LLC 6501 ERDMAN AVE. BALTIMORE, MD 21205 DATE 03/19/19

312"L x 118"W x 126" INSIDE HEIGHT
GENERATOR ENCLOSURE

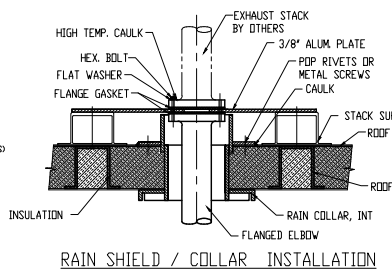
DRW. CT	JOB SERIAL NO.	M191012
CHK. CTL/NG		
APP. MDS		
APP. CCP	SCALE: ---	SHEET 3 OF 8



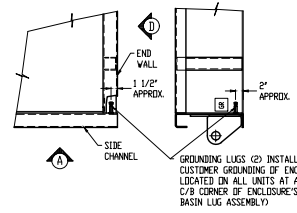
VENT SHIELD/COLLAR INSTALLATION



EMERGENCY VENT
RAIN COLLAR INSTALLATION



RAIN SHIELD / COLLAR INSTALLATION

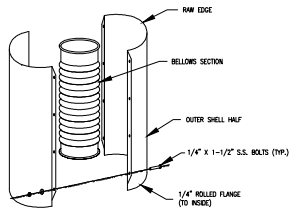


GROUNDING LUG DETAIL

EXTERNAL GROUNDING LUGS FOR CUSTOMER GROUNDING OF ENCLOSURE

8 7 6 5 4 3 2 1

created using AutoCAD

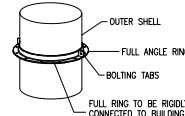


NOTE: THE BELLOWS SECTION IS USED TO COMPENSATE FOR THERMAL EXPANSION IN HIGH PRESSURE APPLICATIONS. IT WILL NOT EXPAND OR CONTRACT TO COMPENSATE FOR FIELD FIT. BELLOWS SECTIONS SHOULD BE USED BETWEEN TWO FIXED POINTS, GUIDED AT NO MORE THAN 12\"/>

BELLOWS SECTION
NOT TO SCALE

NOTE: PER NFPA STACK MUST TERMINATE 3'-0\"/>

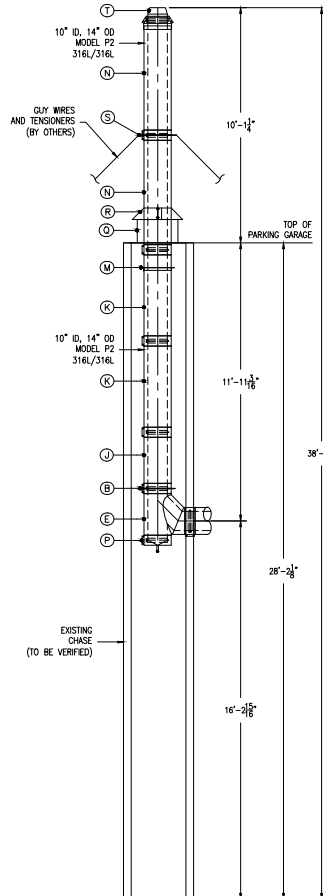
THESE DIMENSIONS ARE BASED UPON OUR INTERPRETATION OF THE INFORMATION GIVEN TO US. IT IS IMPERATIVE THAT ALL DIMENSIONS BE FIELD VERIFIED PRIOR TO RELEASE FOR FABRICATION. DUE TO SOME MANUFACTURING RESTRICTIONS, NOT ALL DIMENSIONS ARE POSSIBLE.



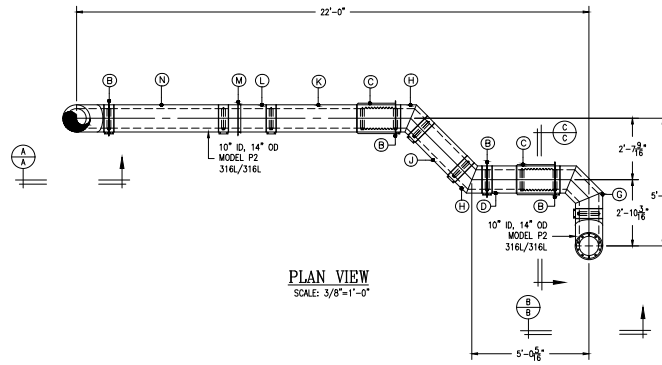
NOTE: DOES NOT ACT AS A SUPPORT IN VERTICAL APPLICATIONS.

NOTE: NOT TO BE USED AS A LIFTING DEVICE FOR INSTALLATION

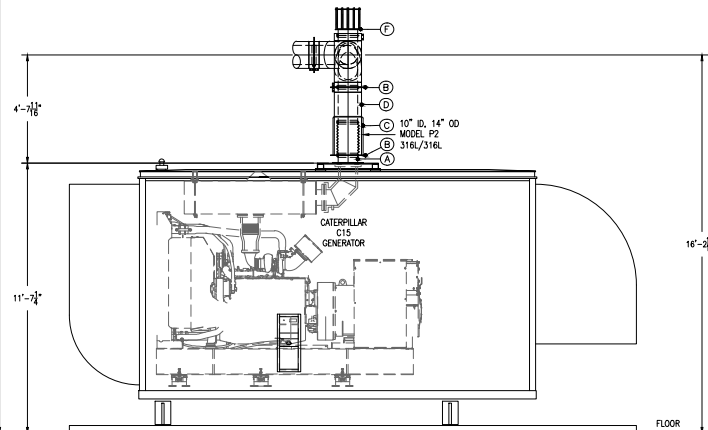
FULL RING DETAIL
NOT TO SCALE



ELEVATION A
SCALE: 3/8\"/>

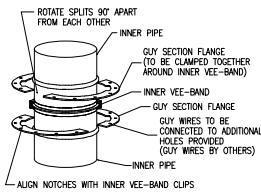


PLAN VIEW
SCALE: 3/8\"/>



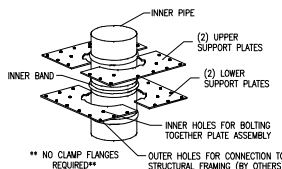
ELEVATION B
SCALE: 3/8\"/>

Parts List			
ITEM/QTY	PART NO.	DESCRIPTION	MATERIAL
A 1	P2-ANAK-10E	P2 ANSI 150# FLANGE ADAPTER KIT ø10"	316/316
B 7	P2-SCSP-10W	P2 SCHEBLER CUSTOM SUPPORT PLATE ø10"	CBST/316
C 3	P2-BS-10E	P2 BELLOWS SECTION ø10"	316/316
D 2	P2-18S-10E	P2 18" STRAIGHT ø10"	316/316
E 2	P2-BT-10E	P2 BOOT TEE ø10"	316/316
F 1	P2-PRV-10E	P2 PRESSURE RELIEF VALVE ø10"	316/316
G 1	P2-90L-10E	P2 90° ELBOW ø10"	316/316
H 2	P2-45L-10E	P2 45° ELBOW ø10"	316/316
J 2	P2-29S-10E	P2 29" STRAIGHT ø10"	316/316
K 3	P2-47S-10E	P2 47" STRAIGHT ø10"	316/316
L 1	P2-SPCST-10E	SPC1 - 24-5/16" STRAIGHT ø10"	316/316
M 2	P2-FR-10H	P2 FULL ANGLE RING ø10"	CBST
N 3	P2-59S-10E	P2 59" STRAIGHT ø10"	316/316
P 1	P2-DTC-10E	P2 DRAIN TEE CAP ø10"	316/316
Q 1	P2-FL-10E	P2 FLASHING ø10"	316/316
R 1	P2-RC-10E	P2 RAIN COLLAR ø10"	316/316
S 1	P2-GS-10W	P2 GUY SECTION ø10"	CBST/316
T 1	P2-EXC-10E	P2 EXIT CONE ø10"	316/316
U 22	P2-IB-10C	P2 ø10" INNER BAND	304/304
V 8	P2-OB-14E	P2 ø14" OUTER BAND	316/316
W 12	P2-HB-14E	P2 ø14" HALF BAND	316/316
X 1	P2-SR-10E	P2 SEAL RING ø10"	316/316
Y 22	IS-10	4" x 38" INSULATION STRIP	P2
Z 6	S2001	POSITIVE PRESSURE SEALANT	
A1 1	HARDWARE	BOX OF NUTS, BOLTS, ETC...	



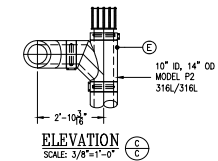
NOTE: NOT TO BE USED AS A LIFTING DEVICE FOR INSTALLATION

GUY SECTION DETAIL
NOT TO SCALE

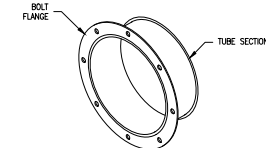


** NO CLAMP FLANGES REQUIRED**

CUSTOM SUPPORT PLATE DETAIL
NOT TO SCALE



ELEVATION C
SCALE: 3/8\"/>



NOTE: FACE FLANGE TO APPLIANCE FLANGE AND DRAW TIGHT WITH BOLTS. FLANGE BOLT PATTERN TO BE SPECIFIED.

ADAPTER KIT (FLANGED)
NOT TO SCALE

P2 NOTES:

1. ALL DIMENSIONS TO BE VERIFIED BY CONTRACTOR BEFORE FABRICATION.
2. INNER SHELL MATERIAL TO BE 20 GA. 316L STAINLESS STEEL.
3. OUTER SHELL MATERIAL TO BE 20 GA. 316L STAINLESS STEEL.
4. DIAMETERS 38" AND LARGER ON STRAIGHT SECTIONS TO BE 18 GA. MATERIAL. FOR FITTINGS, OUTER SHELL DIAMETERS 24" AND LARGER TO BE 18 GA. MATERIAL.
5. INNER SHELL TO BE INSULATED WITH 2" THICK CERAMIC FIBER INSULATION.
6. REFER TO SCHEBLER GENERAL MODEL INSTALLATION INSTRUCTIONS FOR CORRECT INSTALLATION METHODS.

DRAWING APPROVAL

AT LEAST ONE CHECKED AND SIGNED COPY OF THIS DRAWING MUST BE RECEIVED BY SCHEBLER CO. BEFORE FABRICATION CAN BEGIN.

- APPROVED
- REJECTED
- FURNISH AS CORRECTED
- REVISE & RE-SUBMIT
- SUBMIT SPECIFIC ITEM

DATE _____
BY _____

SUBMITTAL

ATLANTIC

ATLANTIC AIR PRODUCTS MFG., LLC
814 RTE 3A BOX 9H 03354
TEL 603-410-3900 FAX 603-410-6281
www.atlanticairproducts.com

ø10" MODEL P2 GENERATOR EXHAUST SYSTEM
ATLANTIC AIR PRODUCTS MFG., LLC
720 HARRISON DOCTOR'S OFFICE

Schebler
CHIMNEY SYSTEMS
HIGHWAY 62 & FENNO RD
BETTENDORF, IOWA 52722

DRAWN BY: D. NELSON
CHECKED BY: _____
DATE: 05/23/19
SCALE: 3/8" = 1'-0"
JOB NO.: 03212-00

REV	DATE	BY	DESCRIPTION

UL US LISTED