



**at&t**

**AT&T Modifications to Existing Wireless Facility  
Wormwood Smokestack**

**Presentation to the Fort Point Channel Landmark District Commission  
Design Review 19.1456  
August 8, 2019 @ 6:00 p.m.  
Boston City Hall – Piemonte Room**

**Edward D. Pare, Jr., Esq.**





LOCATION

©2016 Google Maps

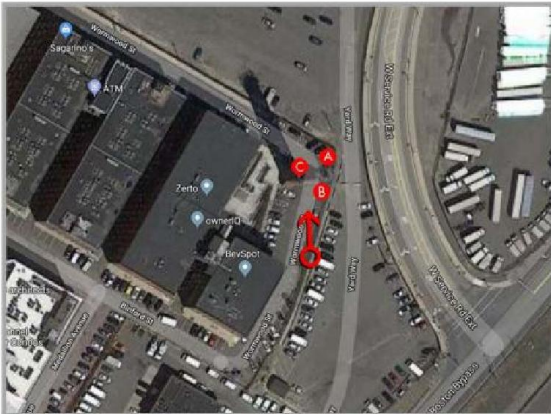


EXISTING



PROPOSED

VIEW 1 | LOOKING NORTH



LOCATION

©2016 Google Maps



EXISTING



PROPOSED

VIEW 2 | LOOKING NORTH



LOCATION

©2016 Google Maps

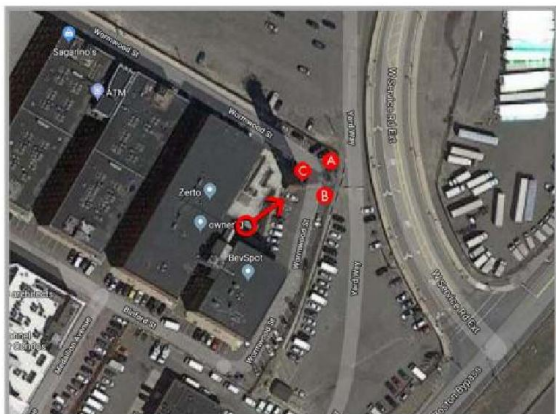


EXISTING



PROPOSED

VIEW 3 | LOOKING NORTHEAST



LOCATION

©2016 Google Maps



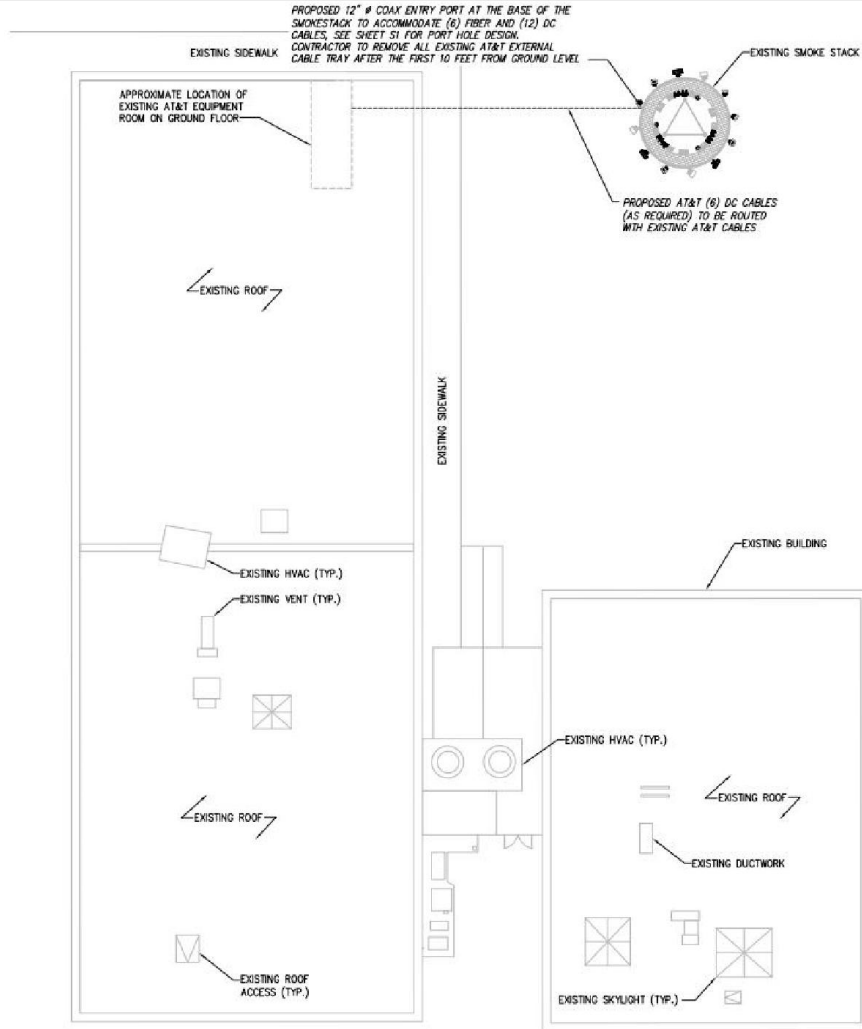
EXISTING



PROPOSED

VIEW 4 | LOOKING NORTHEAST

**NOTE:**  
SEE UPDATED STRUCTURAL ANALYSIS  
COMPLETED BY INTERNATIONAL CHIMNEY  
CORPORATION, DATED 4/3/19. SEE  
SHEET S1 FOR PORT HOLE DESIGN

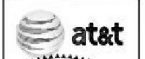


**NOTES:**

- EXISTING CONDITIONS INFORMATION BASED ON INFORMATION PROVIDED TO INFINIGY.
- THESE DRAWINGS DO NOT REFLECT ADEQUACY OF EXISTING OR PROPOSED ANTENNA MOUNTS, MOUNT CONNECTIONS, OR CABLE ATTACHMENTS. INFINIGY DOES NOT ACCEPT LIABILITY FOR ANY OF THESE STRUCTURAL ELEMENTS.
- ROUTE ALL PROPOSED CABLING ON EXISTING CABLE LADDER. ACTUAL ROUTE ON DRAWINGS MAY VARY FROM FIELD LOCATION OF EXISTING CABLE LADDER.
- INSTALLER SHALL PROVIDE ALL NECESSARY CONDUITS AND CIRCUITS AS REQUIRED FOR A COMPLETED INSTALLATION AND SHALL COMPLY WITH EQUIPMENT MANUFACTURER'S INSTALLATION REQUIREMENTS.
- INSTALLER SHALL PROVIDE ALL STRAIN RELIEF FOR ALL CABLE ASSEMBLES ROUTING TO THE ANTENNAS. UTILIZATION OF HOISTING GRIPS ON ALL DC POWER AND FIBER OPTIC CABLES SHALL BE UTILIZED.



**INFINIGY8**  
INFINERY ENGINEERING PLLC  
1003 Walnut Street, 8th  
Floor, Boston, MA 02111  
Tel: 617.638.9493



REGISTERED PROFESSIONAL ENGINEER  
STATE OF MASSACHUSETTS  
No. 49627  
06/21/2019

1	NEEDED FOR REVIEW	ADD	1/2/19
2	NEEDED FOR REVIEW	ADD	1/2/19
3	NEEDED FOR REVIEW	ADD	1/2/19
4	NEEDED FOR REVIEW	ADD	1/2/19
5	NEEDED FOR REVIEW	ADD	1/2/19
6	NEEDED FOR REVIEW	ADD	1/2/19
7	NEEDED FOR REVIEW	ADD	1/2/19
8	NEEDED FOR REVIEW	ADD	1/2/19
9	NEEDED FOR REVIEW	ADD	1/2/19
10	NEEDED FOR REVIEW	ADD	1/2/19

Project Number: 454-2011

Project Title:  
**SOUTH BOSTON**  
FA# 10072360  
MA2261  
27-43 WORMWOOD STREET  
BOSTON, MA 02210

Prepared For:  
**EMPIRE telecom**  
THIS DOCUMENT IS THE SOLE PROPERTY AND CONFIDENTIAL INFORMATION OF THE COMPANY AND IS NOT TO BE REPRODUCED OR TRANSMITTED IN ANY FORM OR BY ANY MEANS WITHOUT THE WRITTEN PERMISSION OF THE COMPANY.

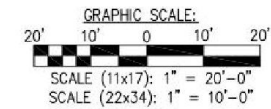
Drawing Scale:  
AS NOTED  
Date:  
02/1/19

Drawing Title:  
**COMPOUND  
PLAN**

Drawing Number:  
**C3**



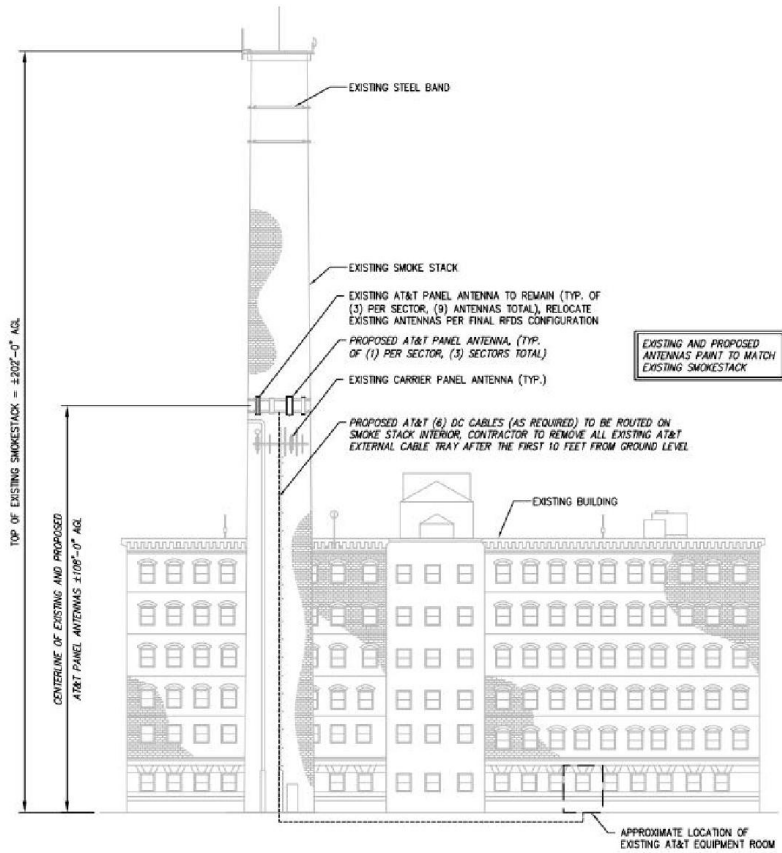
1 OVERALL SITE PLAN  
SCALE: AS NOTED



**NOTE:**  
SEE UPDATED STRUCTURAL ANALYSIS  
COMPLETED BY INTERNATIONAL CHIMNEY  
CORPORATION, DATED 4/3/19. SEE  
SHEET 51 FOR PORT HOLE DESIGN

**NOTE:**

- 3 FEET MINIMUM SEPARATION BETWEEN LTE ANTENNAS
- 6 FEET MINIMUM SEPARATION BETWEEN 700BC & 700 DC



EXISTING AND PROPOSED ANTENNAS PAINT TO MATCH EXISTING SMOKESTACK

1 ELEVATION VIEW  
NOT TO SCALE

- NOTES:**
- EXISTING CONDITIONS INFORMATION BASED ON INFORMATION PROVIDED TO INFINGY.
  - THESE DRAWINGS DO NOT REFLECT ADEQUACY OF EXISTING OR PROPOSED ANTENNA MOUNTS, MOUNT CONNECTIONS, OR CABLE ATTACHMENTS. INFINGY DOES NOT ACCEPT LIABILITY FOR ANY OF THESE STRUCTURAL ELEMENTS.
  - ROUTE ALL PROPOSED CABLING ON EXISTING CABLE LADDER. ACTUAL ROUTE ON DRAWINGS MAY VARY FROM FIELD LOCATION OF EXISTING CABLE LADDER.
  - INSTALLER SHALL PROVIDE ALL NECESSARY CONDUITS AND GROUNTS AS REQUIRED FOR A COMPLETED INSTALLATION AND SHALL COMPLY WITH EQUIPMENT MANUFACTURER'S INSTALLATION REQUIREMENTS.
  - INSTALLER SHALL PROVIDE ALL STRAIN RELIEF FOR ALL CABLE ASSEMBLIES ROUTING TO THE ANTENNAS. UTILIZATION OF HOSTING GRIPS ON ALL DC POWER AND FIBER OPTIC CABLES SHALL BE UTILIZED.

**INFINGY8**  
INFINGY ENGINEERING, PLLC  
1033 Water-Led Street Rd  
Chatham, MA 01928  
Tel: 413.719.6000  
Fax: 413.719.6009



STATE OF MASSACHUSETTS  
JOHN S. STEVENS  
CIVIL  
No. 49647  
06/21/2019  
PROFESSIONAL ENGINEER

THIS DOCUMENT IS THE PROPERTY OF INFINGY ENGINEERING, PLLC. IT IS TO BE USED ONLY FOR THE PROJECT AND SITE SPECIFICALLY IDENTIFIED HEREIN. IT IS NOT TO BE REPRODUCED, COPIED, OR TRANSMITTED IN ANY FORM OR BY ANY MEANS, ELECTRONIC OR MECHANICAL, INCLUDING PHOTOCOPYING, RECORDING, OR BY ANY INFORMATION STORAGE AND RETRIEVAL SYSTEM.

NO.	REVISION	DATE
2	REVISED FOR REVIEW	ASB 4/27/19
7	REVISED FOR REVIEW	ASB 3/26/19
1	REVISED FOR REVIEW	ASB 2/26/19
3	REVISED FOR REVIEW	ASB 1/28/19
5	REVISED FOR REVIEW	ASB 1/6/19
6	REVISED FOR REVIEW	ASB 8/17/18
4	CREATED FOR REVIEW	ASB 1/25/18
4	REVISION MADE	ASB 1/25/18

Drawn: ASB Date: 1/26/18  
Designed: ASB Date: 1/26/18  
Checked: ASB Date: 1/26/18

Project Number: 484461

Project Title: SOUTH BOSTON

FA# 10072360  
MA2261

27-43 WORMWOOD STREET  
BOSTON, MA 02210

Prepared For:  
**EMPIRE telecom**  
EMPIRE TELECOM  
THIS DOCUMENT IS THE PROPERTY OF INFINGY ENGINEERING, PLLC. IT IS TO BE USED ONLY FOR THE PROJECT AND SITE SPECIFICALLY IDENTIFIED HEREIN. IT IS NOT TO BE REPRODUCED, COPIED, OR TRANSMITTED IN ANY FORM OR BY ANY MEANS, ELECTRONIC OR MECHANICAL, INCLUDING PHOTOCOPYING, RECORDING, OR BY ANY INFORMATION STORAGE AND RETRIEVAL SYSTEM.

Drawing Scale: AS NOTED

Date: 02/11/19

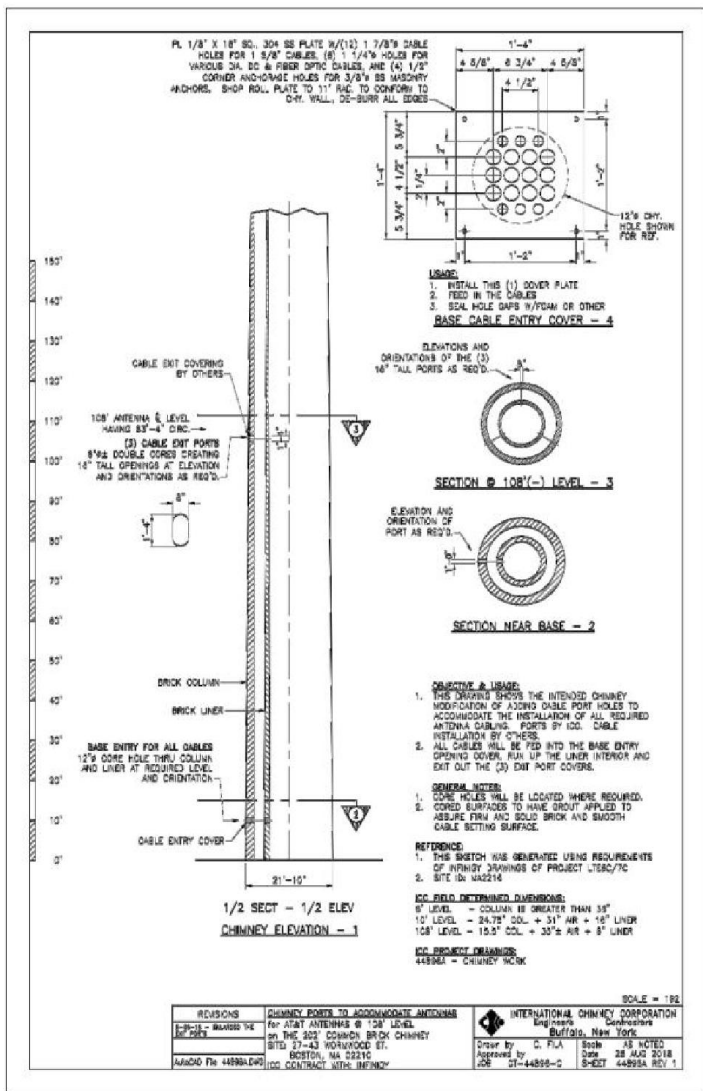
Drawing Title: **ELEVATION VIEW**

Drawing Number: **C5**









1 PORT HOLE DESIGNS  
SCALE: NOT TO SCALE

**INFINIGY8**

INFENY ENGINEERING PLLC  
1003 Walnut Street, Suite 200  
Boston, MA 02116  
Phone: 617-552-9099



Seal No. 49847  
06/21/2019  
REGISTERED PROFESSIONAL ENGINEER

Seal No. 49847  
06/21/2019  
REGISTERED PROFESSIONAL ENGINEER

Seal No. 49847  
06/21/2019  
REGISTERED PROFESSIONAL ENGINEER

Seal No. 49847  
06/21/2019  
REGISTERED PROFESSIONAL ENGINEER

Seal No. 49847  
06/21/2019  
REGISTERED PROFESSIONAL ENGINEER

Seal No. 49847  
06/21/2019  
REGISTERED PROFESSIONAL ENGINEER

Seal No. 49847  
06/21/2019  
REGISTERED PROFESSIONAL ENGINEER

Seal No. 49847  
06/21/2019  
REGISTERED PROFESSIONAL ENGINEER

Seal No. 49847  
06/21/2019  
REGISTERED PROFESSIONAL ENGINEER

Seal No. 49847  
06/21/2019  
REGISTERED PROFESSIONAL ENGINEER

Seal No. 49847  
06/21/2019  
REGISTERED PROFESSIONAL ENGINEER

Seal No. 49847  
06/21/2019  
REGISTERED PROFESSIONAL ENGINEER

Seal No. 49847  
06/21/2019  
REGISTERED PROFESSIONAL ENGINEER

Seal No. 49847  
06/21/2019  
REGISTERED PROFESSIONAL ENGINEER

Seal No. 49847  
06/21/2019  
REGISTERED PROFESSIONAL ENGINEER

Seal No. 49847  
06/21/2019  
REGISTERED PROFESSIONAL ENGINEER

Seal No. 49847  
06/21/2019  
REGISTERED PROFESSIONAL ENGINEER

Seal No. 49847  
06/21/2019  
REGISTERED PROFESSIONAL ENGINEER

Seal No. 49847  
06/21/2019  
REGISTERED PROFESSIONAL ENGINEER

Seal No. 49847  
06/21/2019  
REGISTERED PROFESSIONAL ENGINEER

Seal No. 49847  
06/21/2019  
REGISTERED PROFESSIONAL ENGINEER

Seal No. 49847  
06/21/2019  
REGISTERED PROFESSIONAL ENGINEER

Seal No. 49847  
06/21/2019  
REGISTERED PROFESSIONAL ENGINEER

Seal No. 49847  
06/21/2019  
REGISTERED PROFESSIONAL ENGINEER

Seal No. 49847  
06/21/2019  
REGISTERED PROFESSIONAL ENGINEER

Seal No. 49847  
06/21/2019  
REGISTERED PROFESSIONAL ENGINEER

Seal No. 49847  
06/21/2019  
REGISTERED PROFESSIONAL ENGINEER

Seal No. 49847  
06/21/2019  
REGISTERED PROFESSIONAL ENGINEER

Seal No. 49847  
06/21/2019  
REGISTERED PROFESSIONAL ENGINEER

Seal No. 49847  
06/21/2019  
REGISTERED PROFESSIONAL ENGINEER

Seal No. 49847  
06/21/2019  
REGISTERED PROFESSIONAL ENGINEER

Seal No. 49847  
06/21/2019  
REGISTERED PROFESSIONAL ENGINEER

Seal No. 49847  
06/21/2019  
REGISTERED PROFESSIONAL ENGINEER

Seal No. 49847  
06/21/2019  
REGISTERED PROFESSIONAL ENGINEER

Seal No. 49847  
06/21/2019  
REGISTERED PROFESSIONAL ENGINEER

Seal No. 49847  
06/21/2019  
REGISTERED PROFESSIONAL ENGINEER

Seal No. 49847  
06/21/2019  
REGISTERED PROFESSIONAL ENGINEER

Seal No. 49847  
06/21/2019  
REGISTERED PROFESSIONAL ENGINEER

Seal No. 49847  
06/21/2019  
REGISTERED PROFESSIONAL ENGINEER

Seal No. 49847  
06/21/2019  
REGISTERED PROFESSIONAL ENGINEER

Seal No. 49847  
06/21/2019  
REGISTERED PROFESSIONAL ENGINEER

Seal No. 49847  
06/21/2019  
REGISTERED PROFESSIONAL ENGINEER

Seal No. 49847  
06/21/2019  
REGISTERED PROFESSIONAL ENGINEER

Seal No. 49847  
06/21/2019  
REGISTERED PROFESSIONAL ENGINEER

Seal No. 49847  
06/21/2019  
REGISTERED PROFESSIONAL ENGINEER

Seal No. 49847  
06/21/2019  
REGISTERED PROFESSIONAL ENGINEER

Seal No. 49847  
06/21/2019  
REGISTERED PROFESSIONAL ENGINEER

Seal No. 49847  
06/21/2019  
REGISTERED PROFESSIONAL ENGINEER

Seal No. 49847  
06/21/2019  
REGISTERED PROFESSIONAL ENGINEER

Seal No. 49847  
06/21/2019  
REGISTERED PROFESSIONAL ENGINEER

Seal No. 49847  
06/21/2019  
REGISTERED PROFESSIONAL ENGINEER

Seal No. 49847  
06/21/2019  
REGISTERED PROFESSIONAL ENGINEER

Seal No. 49847  
06/21/2019  
REGISTERED PROFESSIONAL ENGINEER

Seal No. 49847  
06/21/2019  
REGISTERED PROFESSIONAL ENGINEER

Seal No. 49847  
06/21/2019  
REGISTERED PROFESSIONAL ENGINEER

Seal No. 49847  
06/21/2019  
REGISTERED PROFESSIONAL ENGINEER

Seal No. 49847  
06/21/2019  
REGISTERED PROFESSIONAL ENGINEER

Seal No. 49847  
06/21/2019  
REGISTERED PROFESSIONAL ENGINEER

Seal No. 49847  
06/21/2019  
REGISTERED PROFESSIONAL ENGINEER

Seal No. 49847  
06/21/2019  
REGISTERED PROFESSIONAL ENGINEER

Seal No. 49847  
06/21/2019  
REGISTERED PROFESSIONAL ENGINEER