

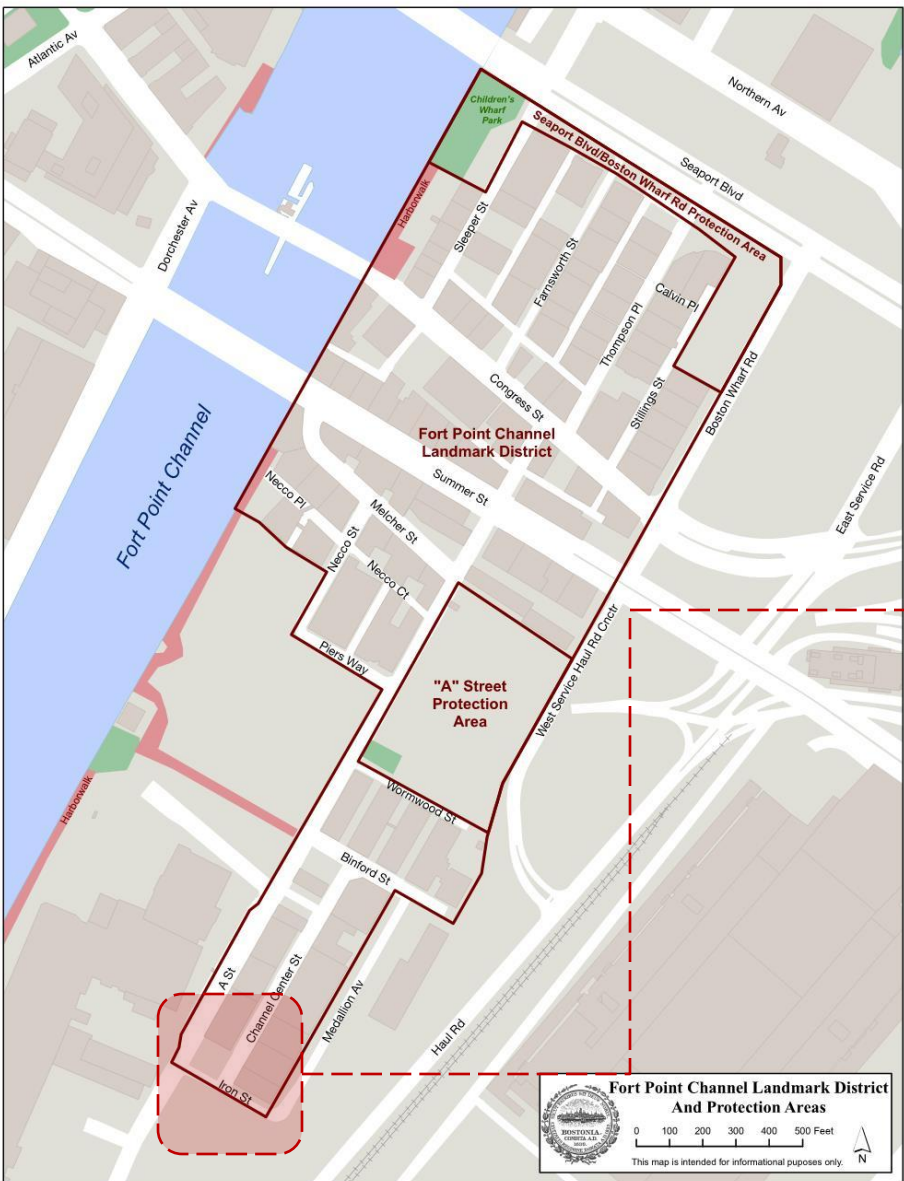
5 CHANNEL CENTER STREET BASE BUILDING

FORT POINT CHANNEL LANDMARK DISTRICT COMMISSION

HEARING: 10 OCTOBER 2019



DIMELLA
SHAFFER



REFERENCE: ArcGIS



CHANNEL CENTER/IRON STREET – SOUTH-FACING

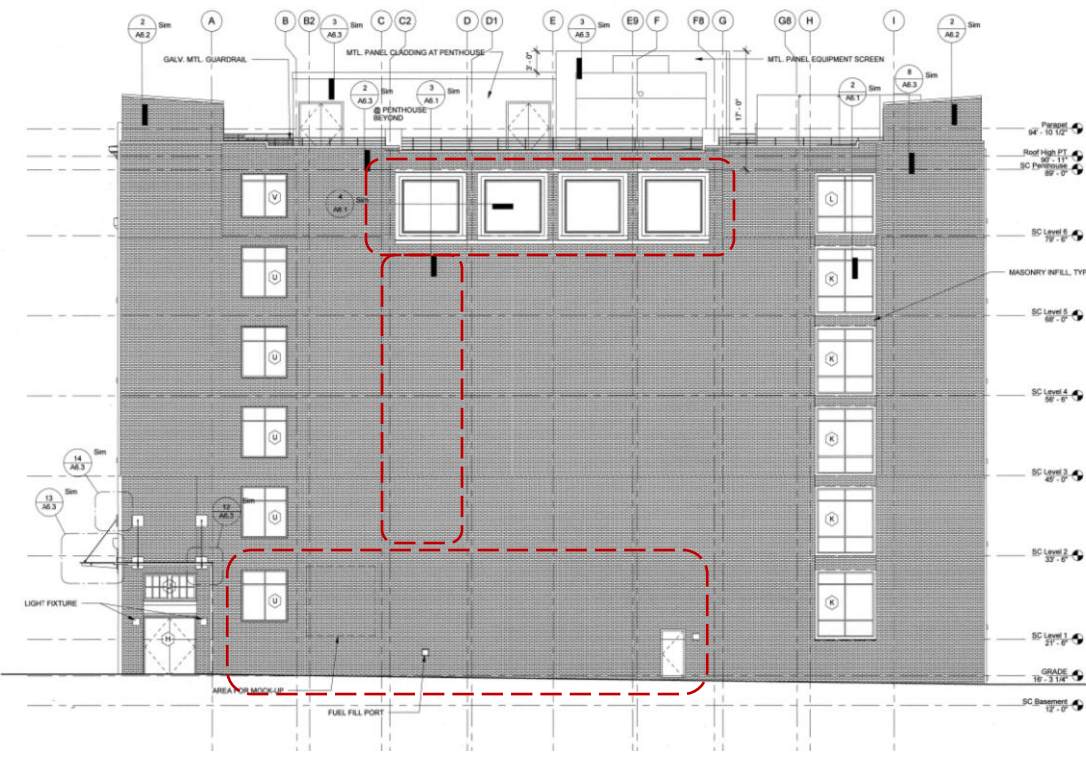


MEDALLION AVENUE – EAST-FACING

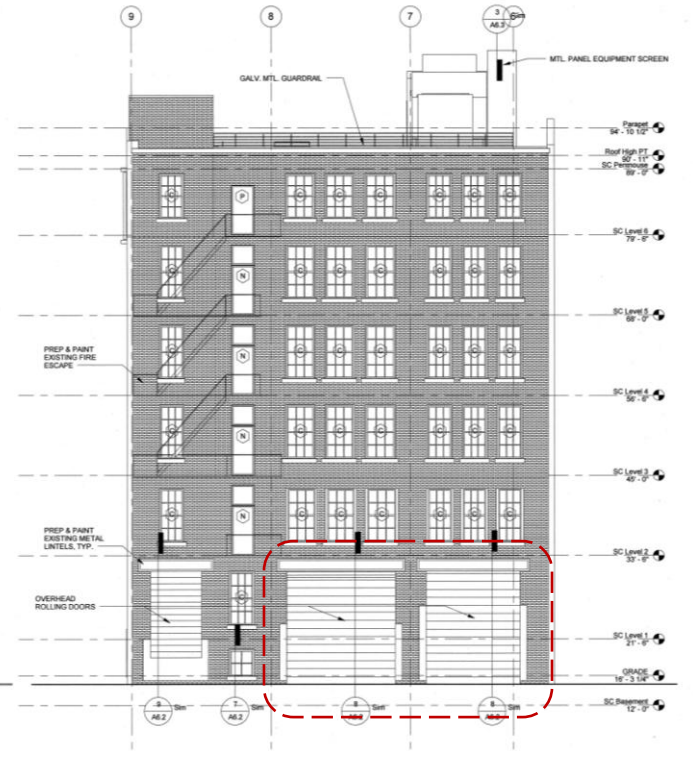
**DIMELLA
SHAFFER**

EXISTING SOUTH AND EAST FACADES

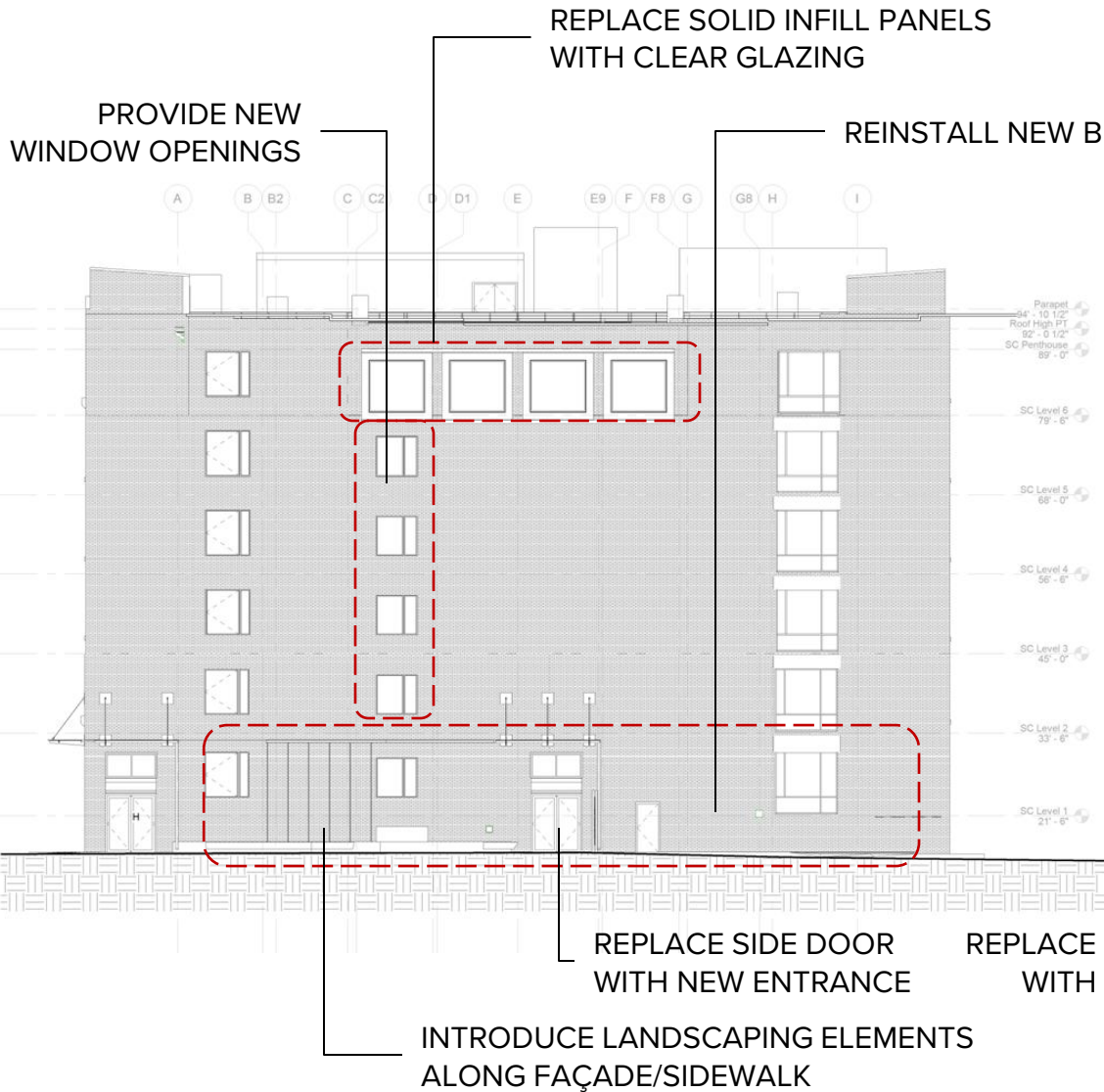
5 CHANNEL CENTER / 10 OCTOBER 2019



IRON STREET – SOUTH-FACING



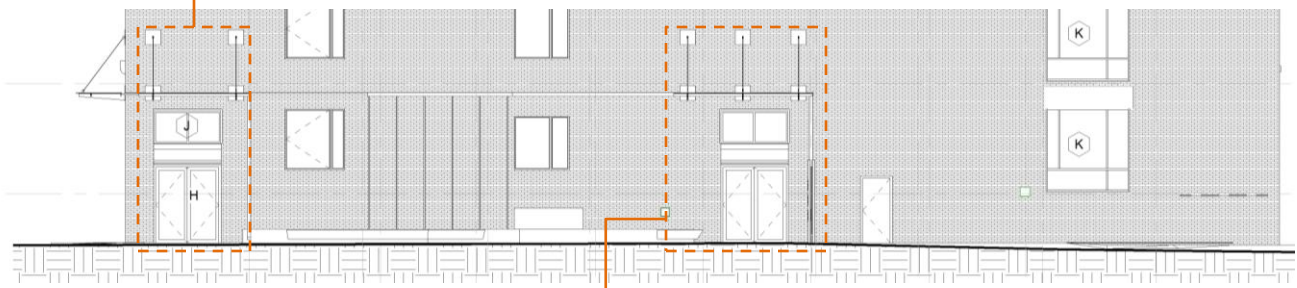
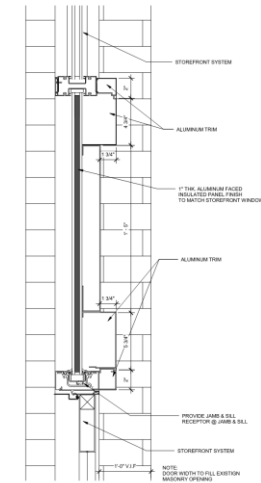
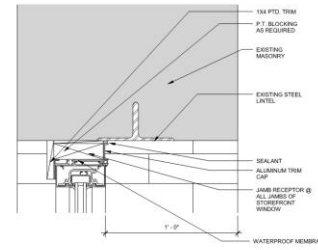
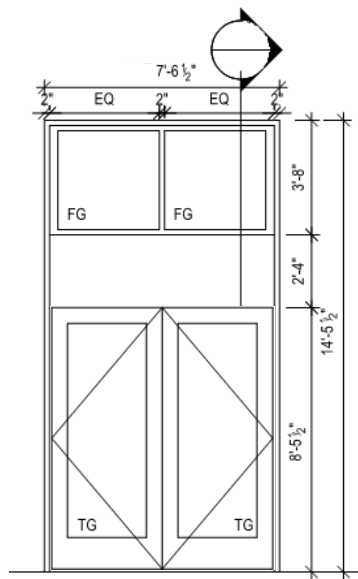
MEDALLION AVENUE – EAST-FACING



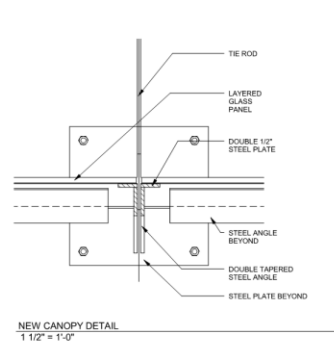




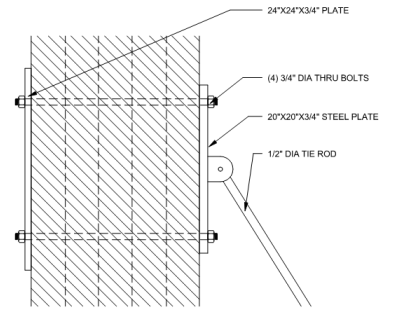
REPLACEMENT DOOR TO EMULATE EXISTING ENTRY DOOR STYLE, TRANSOM AND CANOPY



IRON STREET ELEVATION

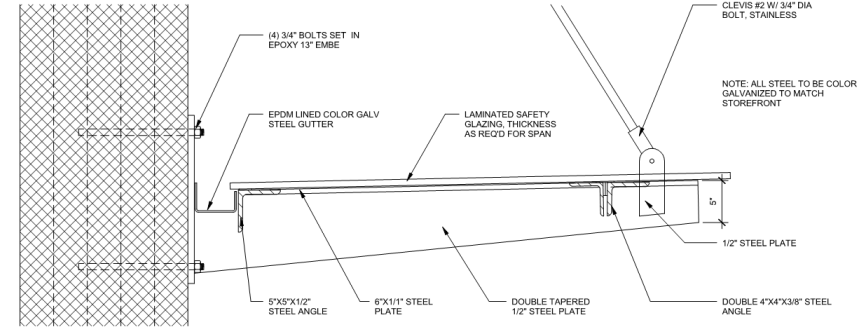


NEW CANOPY DETAIL
1 1/2" = 1'-0"

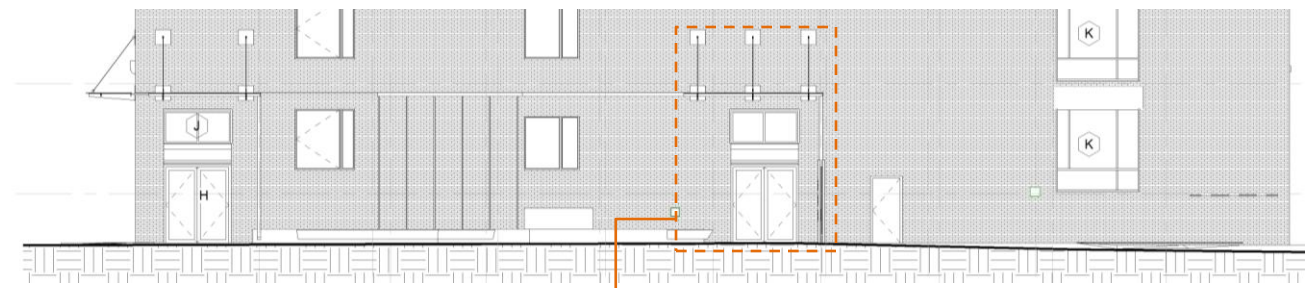


NEW CANOPY SECTION DETAIL-2
1 1/2" = 1'-0"

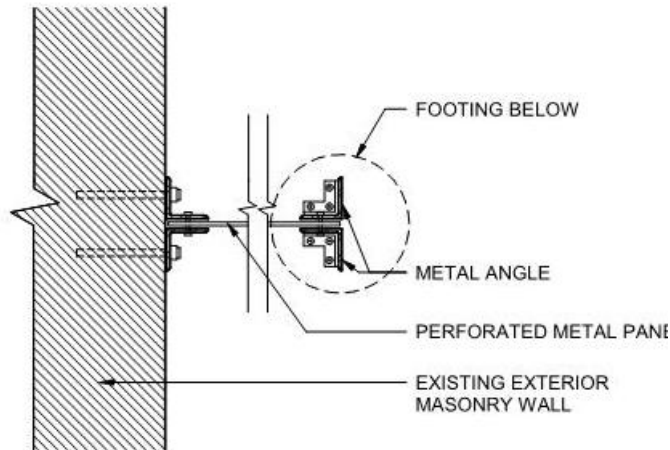
REPLACEMENT DOOR TO EMULATE EXISTING ENTRY DOOR STYLE, TRANSOM AND CANOPY



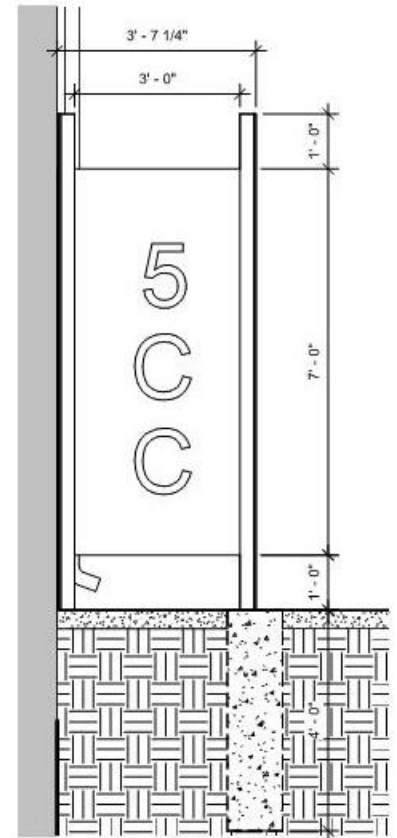
NEW CANOPY SECTION DETAIL
1 1/2" = 1'-0"



IRON STREET ELEVATION



4 SIGNAGE ATTACHMENT DETAIL
 1 1/2" = 1'-0"



7 SIGNAGE ELEVATION
 1/2" = 1'-0"



DIMELLA
SHAFFER

IRON STREET ELEVATION – SECOND ENTRY

5 CHANNEL CENTER / 10 OCTOBER 2019

EXISTING TREES AND LAMPPOSTS TO REMAIN

EXTEND COBBLE SIDEWALK PAVING

WOOD BENCH

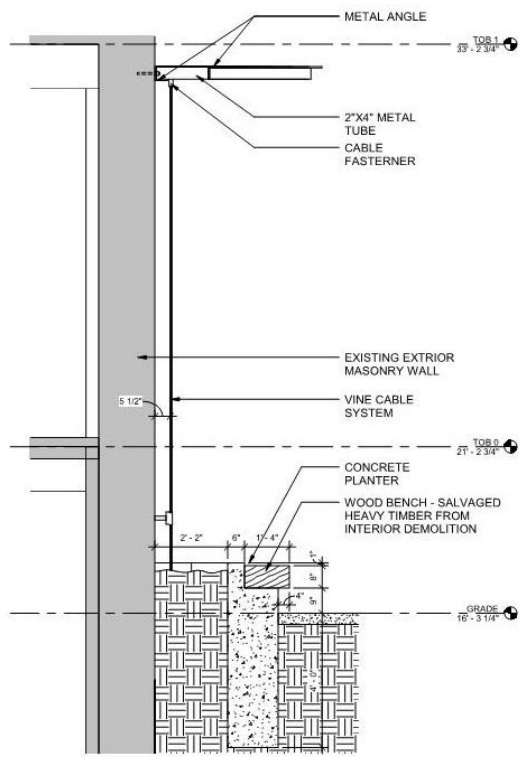
CONCRETE PLANTER

INDIGENOUS PLANTINGS

CABLE TRELLIS

OPEN PAINTED STEEL FRAME





8 PLANTER/TRELLIS SECTION
1/2" = 1'-0"

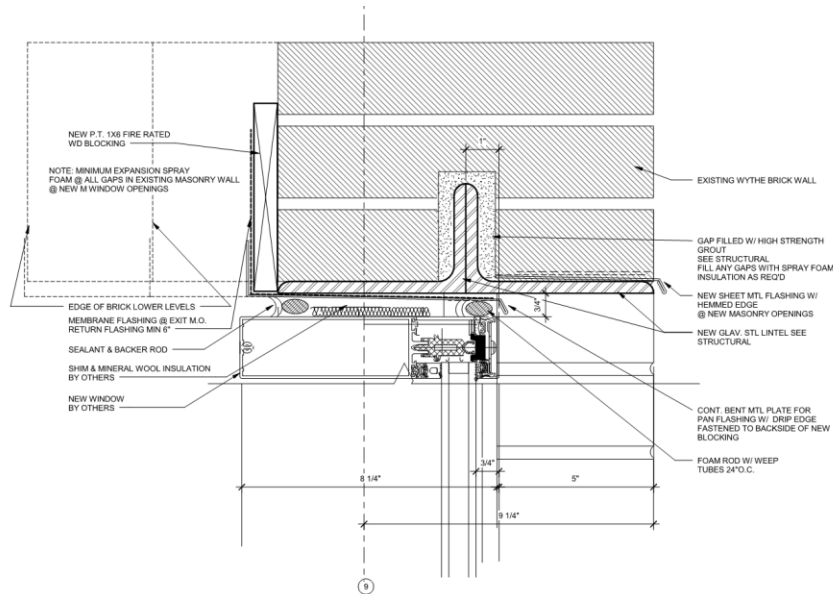
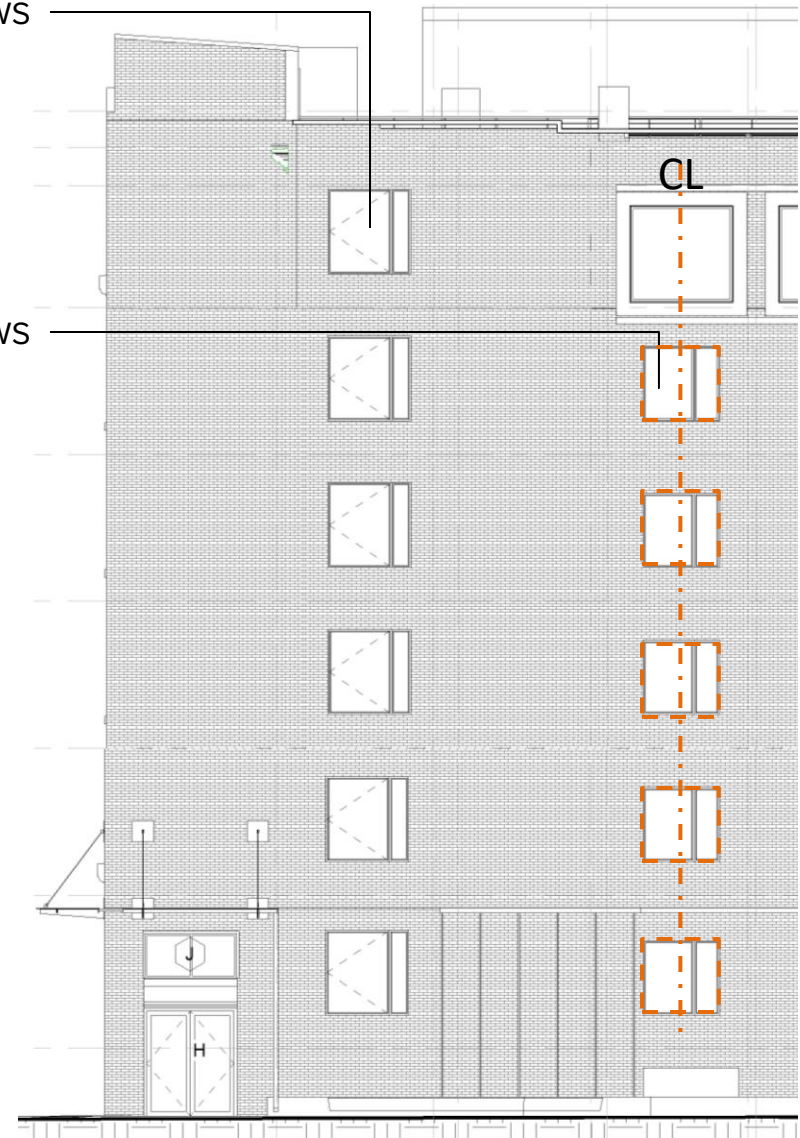




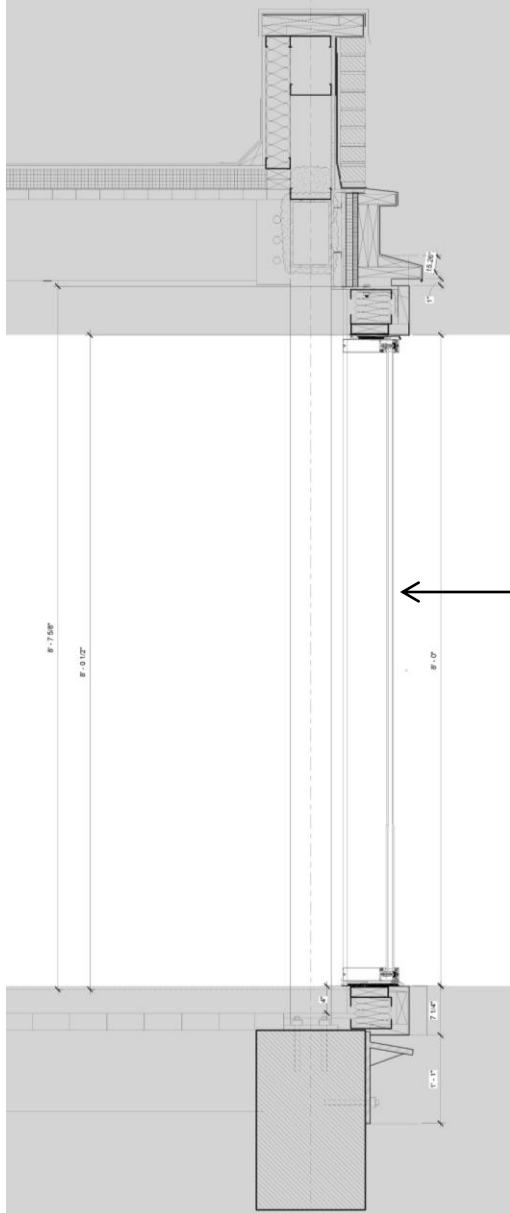
EXISTING WINDOWS

PROPOSED WINDOWS

NEW WINDOWS TO BE SIMILAR IN DIMENSION AND CONFIGURATION TO EXISTING WINDOWS



2 WINDOW TYPE U HEAD DETAIL
8' = 1'-0"



← CLEAR, INSULATED
GLAZING



**DIMELLA
SHAFFER**

EXISTING WINDOW
FRAMES TO REMAIN.
REPLACE OPAQUE
INFILL PANELS WITH
CLEAR GLAZING

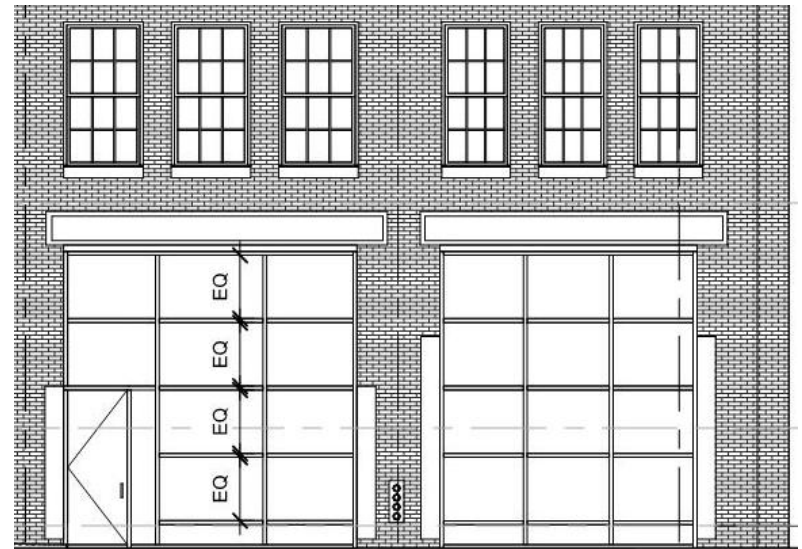
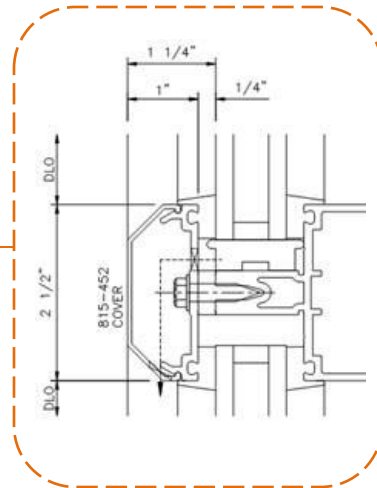
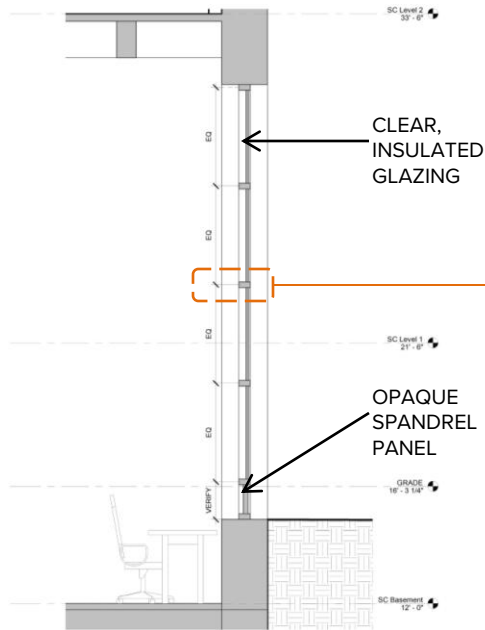
SELECTED DETAILS - WINDOWS

5 CHANNEL CENTER / 10 OCTOBER 2019



REPLACEMENT GLAZED CURTAIN WALL AT LOADING DOCK DOORS TO BE SIMILAR IN DIMENSION, FINISH AND CONFIGURATION TO EXISTING CHANNEL CENTER STREET FAÇADE WINDOWS.

EXISTING LINTELS TO REMAIN PATINATED AS EXISTING TO CELEBRATE HISTORICAL CHARACTER



DIMELLA
SHAFFER

SELECTED DETAILS - WINDOWS

5 CHANNEL CENTER / 10 OCTOBER 2019



DIMELLA
SHAFFER

CONTACT INFORMATION

David Godfroy

617.426.5004

www.dimellashaffer.com

