

# 34 Beacon St – Scope of Work

## Roof

- Remove upper railing at upper roof
- Remove Roof Hatch.

## Window

- Remove/Replace (2) Dormer windows on upper level
- Replace (3) 6 over 6 windows with (3) 6 over 6 windows.
- Replace (1) 2 over 2 windows with (1) two over 2 window.

## Flag Pole

- Replace existing in kind



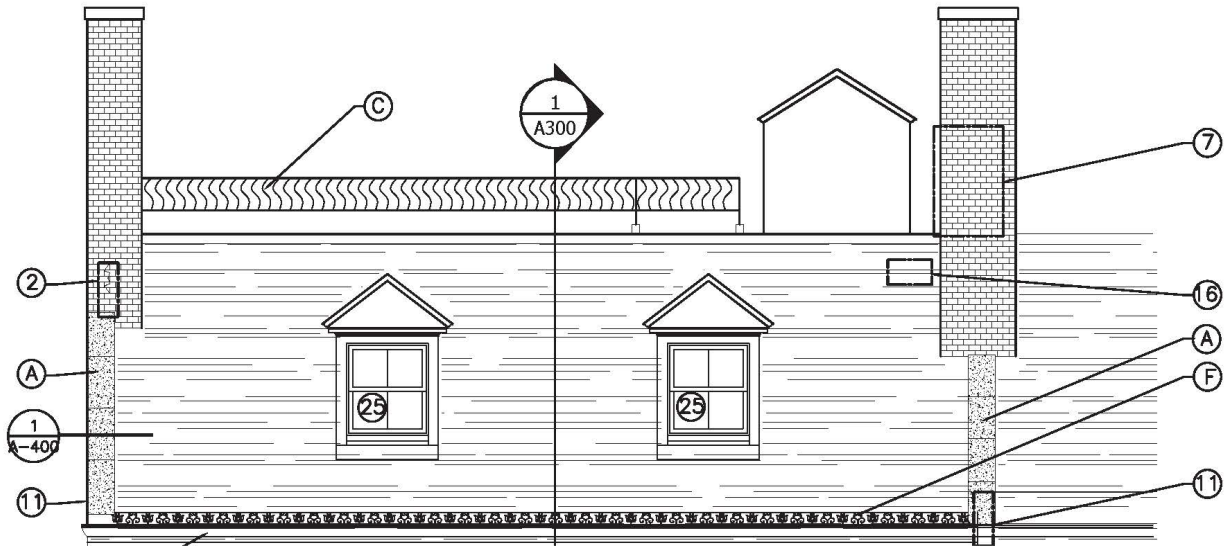
# Roof Scope

## Remove upper railing at upper roof

### Section C

Remove and dispose of existing rails and pitch pockets at the perimeter of the flat roof.

Alternate (Previously Approved): Cut the existing post at the base just above the existing pitch pockets prepare, paint, and reinstall by welding. Repair pitch pockets and fill to receive new railing.



South Elevation – Beacon Street



North Elevation

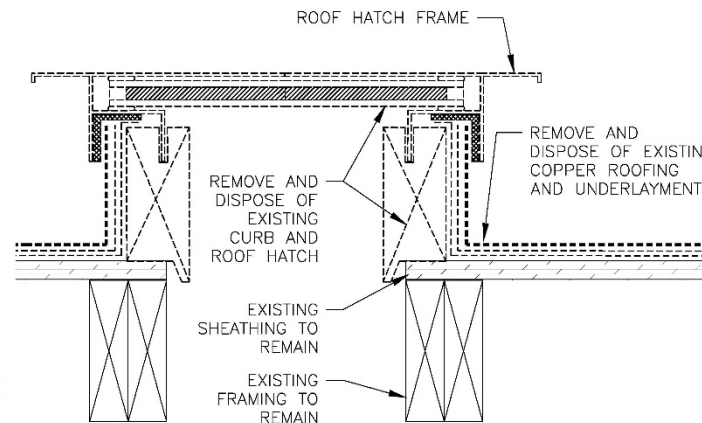
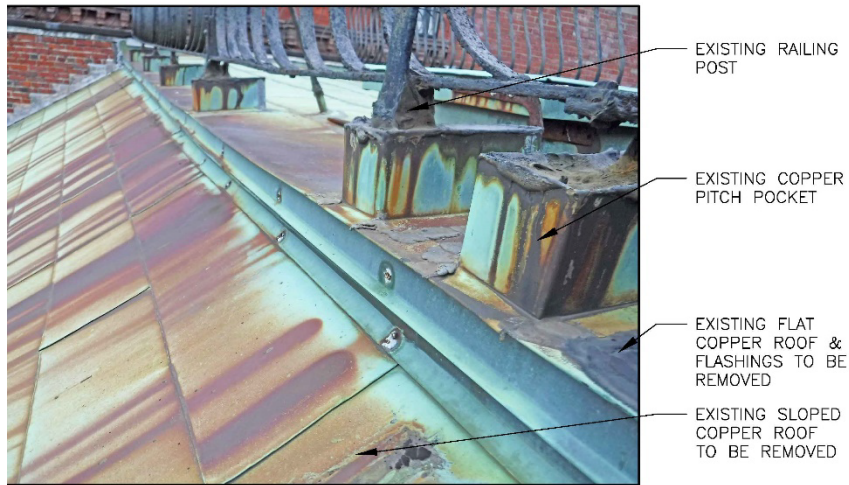
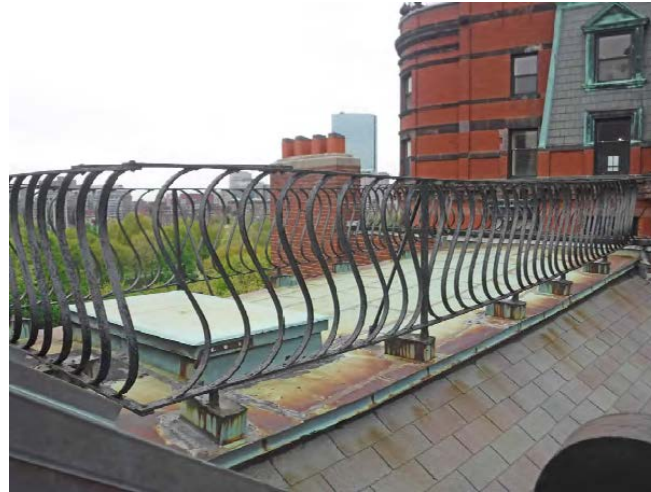


# Roof Scope

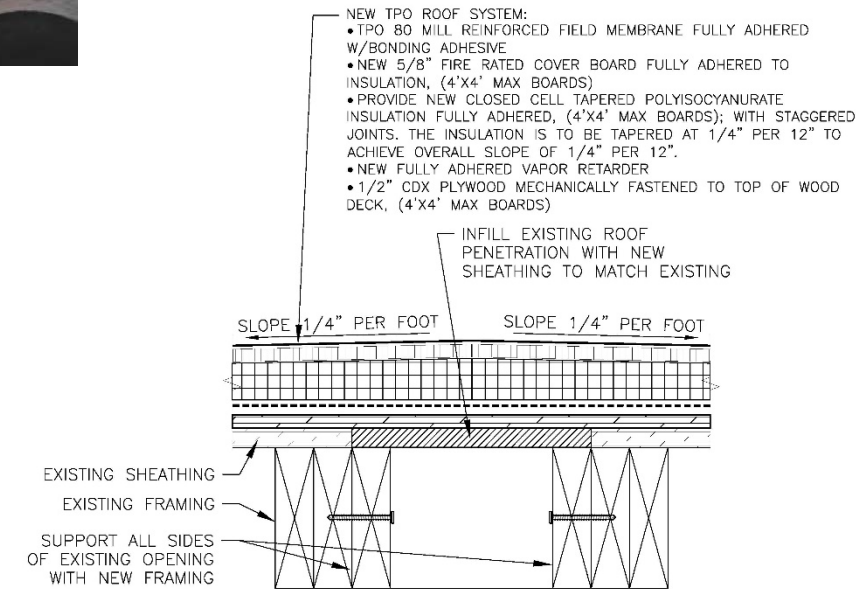
## Remove roof Hatch

### Section 10: Hatch Detail

### Section 11: Roof Hatch Infill and Removal detail.



**10** ROOF HATCH - EXISTING-DEMO  
SCALE: 3" = 1'-0"



**11** ROOF HATCH INFILL - NEW TPO ROOF @ FLAT ROOF  
SCALE: 3" = 1'-0"

**14** FLAT ROOF TO COPPER ROOF TRANSITION - EXISTING  
SCALE: 3" = 1'-0"

# Window Scope

Remove/Replace 2 x Dormer windows on upper level

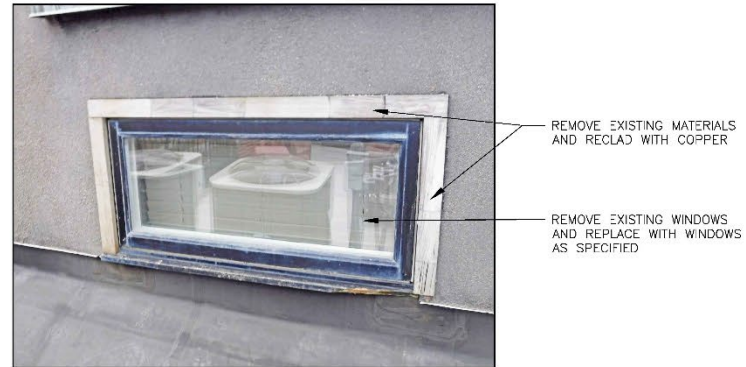
Elevator Window: Non original window, propose a 6 lite set piece.

Office Window: Non original, Replace with 6 over 6.

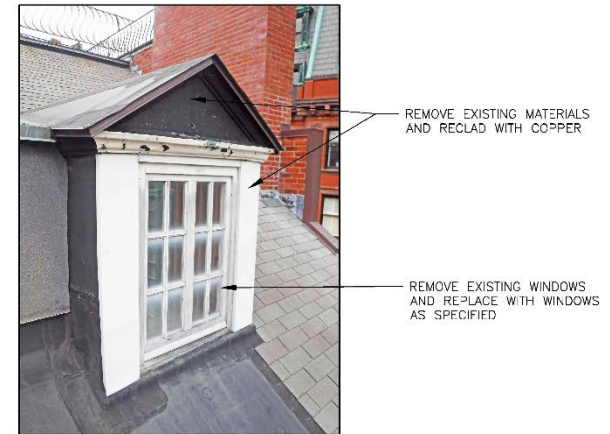
**\*\*Both are not visible from public way\*\***



1 DORMER ROOF AT BACK OF HOUSE - EXISTING  
SCALE: 3" = 1'-0"



2 ELEVATOR WINDOW - EXISTING  
SCALE: 3" = 1'-0"



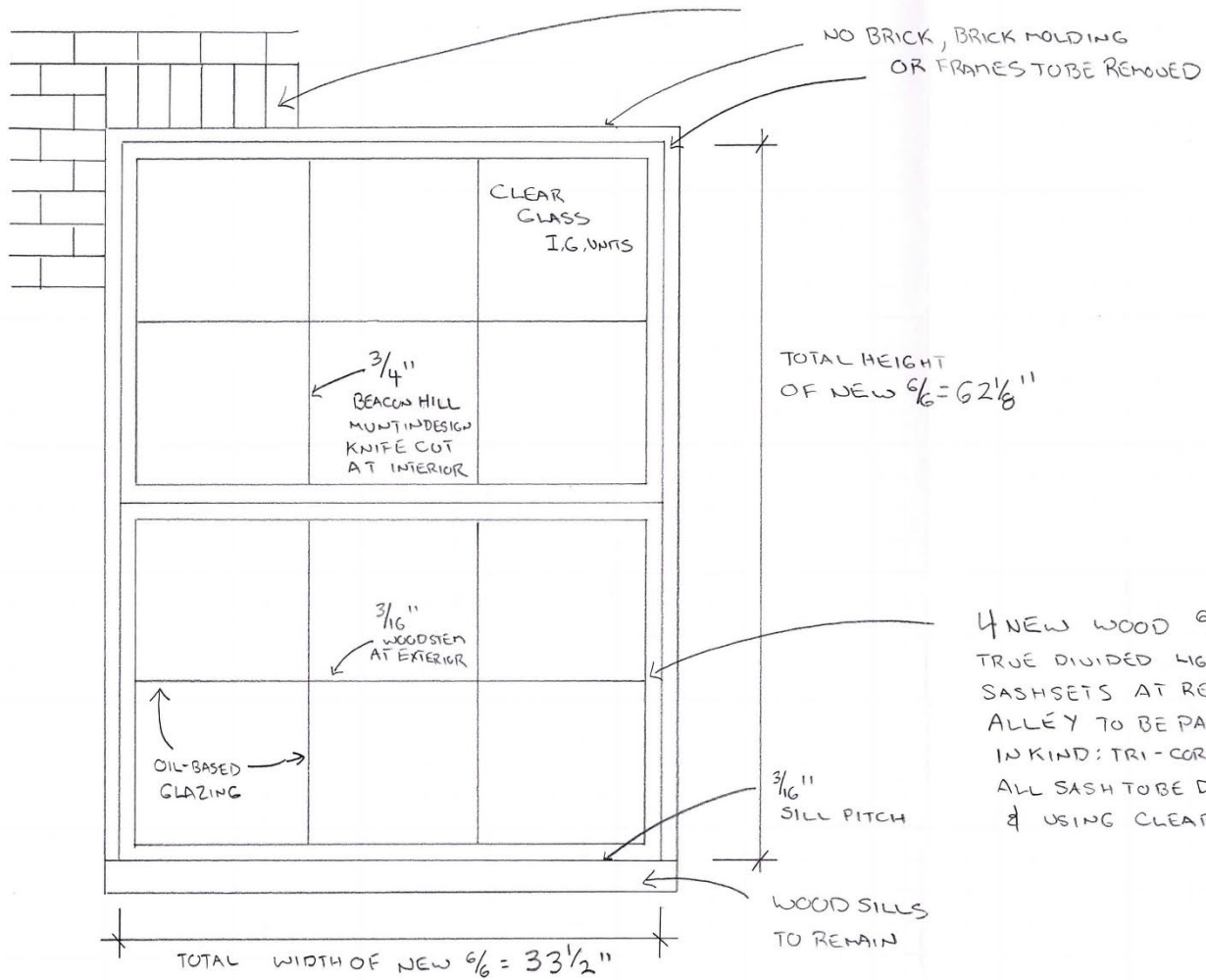
3 OFFICE WINDOW - EXISTING  
SCALE: 3" = 1'-0"



# Window Scope

Remove/Replace (3) 6 over 6 non original windows on Joy Street with (3) 6 over 6 windows.



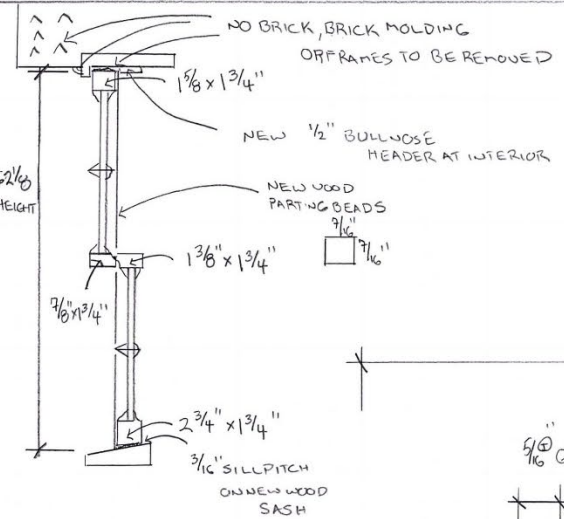


Historic Window & Door Holdings  
 12 Forest Road, Junction 123&123A  
 P.O. Box 138  
 Alstead, N.H. 03602-0138

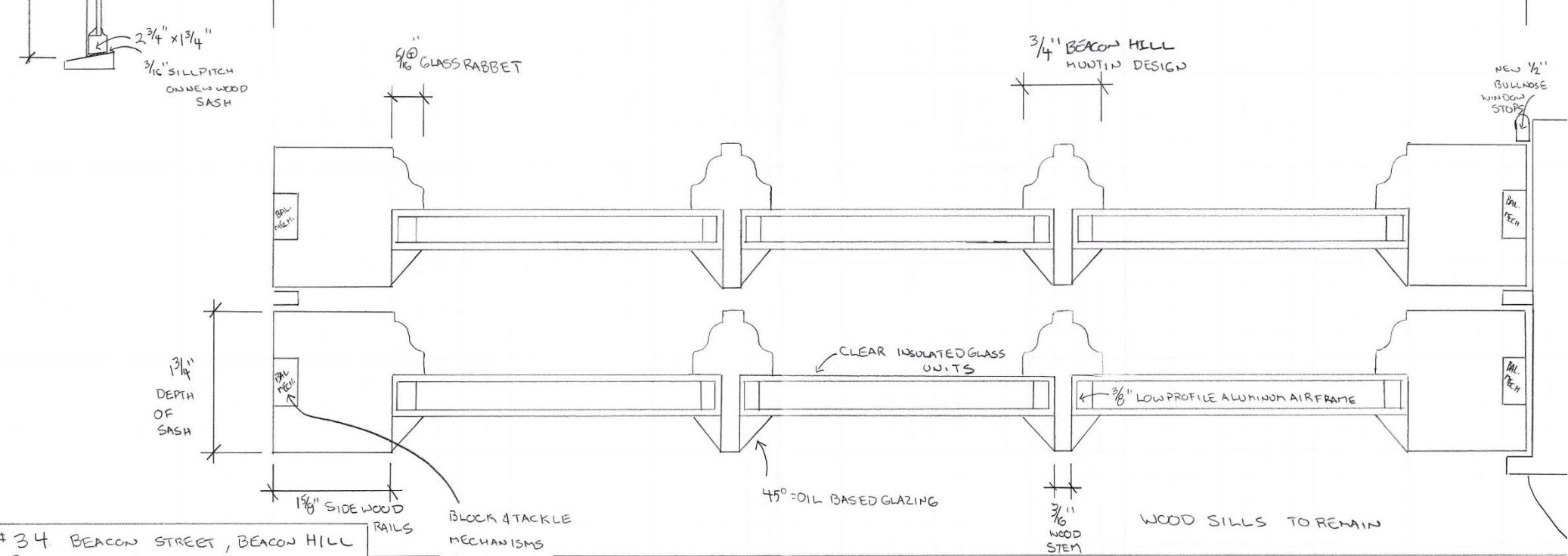
4 NEW WOOD %  
 TRUE DIVIDED LIGHT  
 SASHSETS AT REAR  
 ALLÉY TO BE PAINTED  
 IN KIND: TRI-CORN BLACK  
 ALL SASH TO BE DOUBLE-HUNG  
 & USING CLEAR GLASS

\* EXISTING SASH, RIGHT OF GARAGE IS 3/2 NON-ORIGINAL WINDOW  
 3 TOTAL % ON JOY ARE NON-ORIGINAL SASH.

# 34 BEACON STREET, BEACON HILL BOSTON, M.A. 02108
JOY STREET, ELEVATION
FRONT VIEW
SHEET NO. 1 OF 3



WIDTH OF NEW  $\frac{9}{16}$  WOOD SASH =  $33\frac{1}{2}$ "



# 34 BEACON STREET, BEACON HILL  
BOSTON, M.A. 02108

JOY STREET, ELEVATION

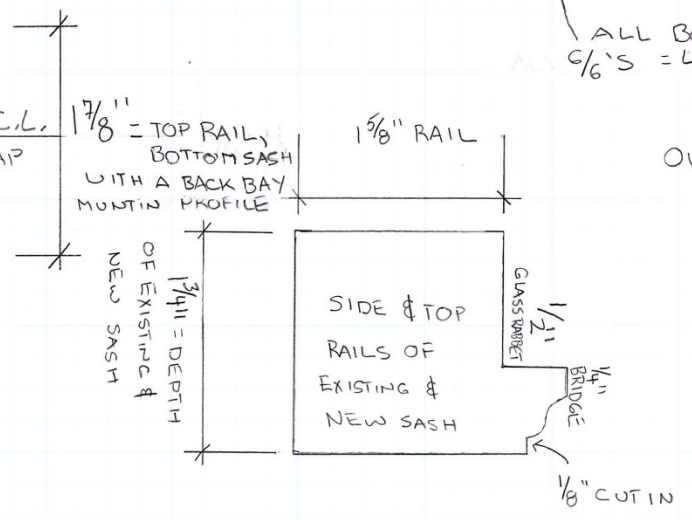
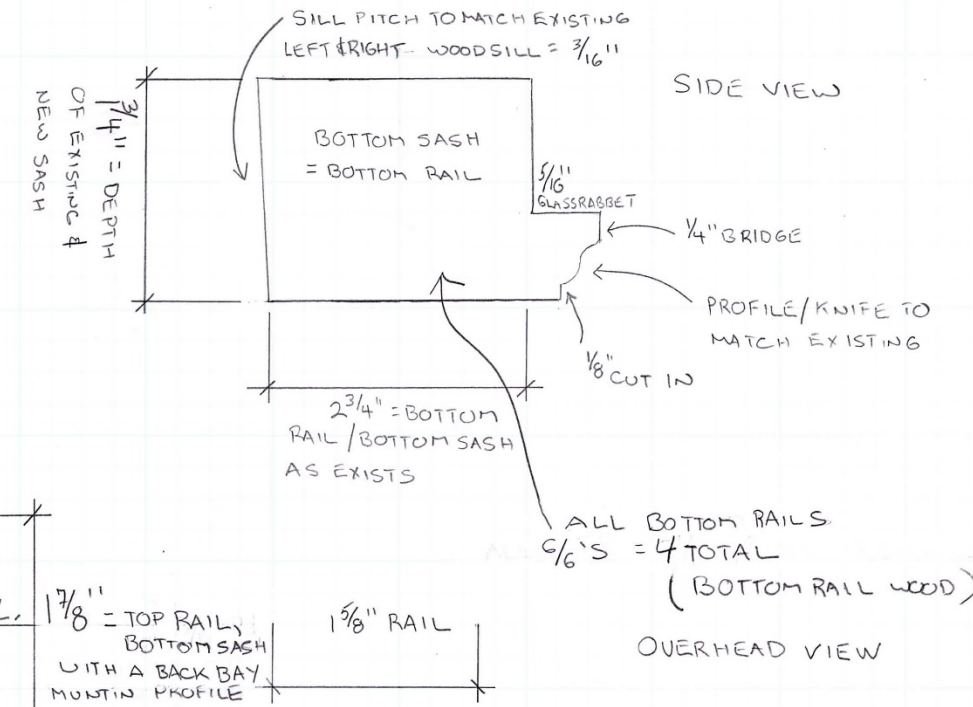
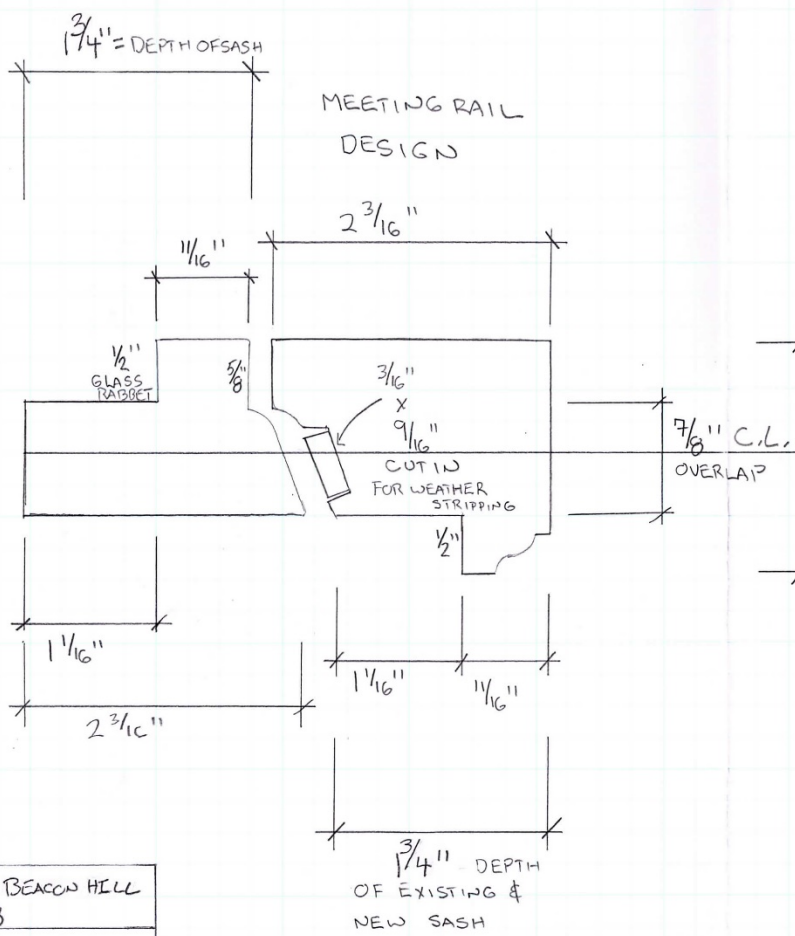
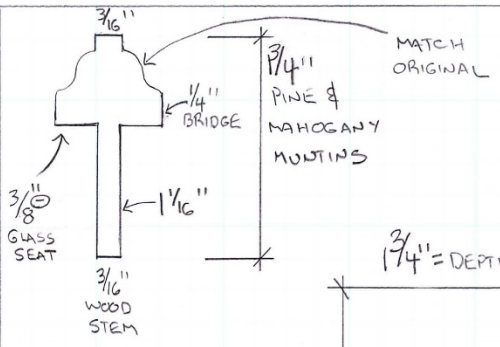
SIDE & OVER HEAD VIEW

SHEET NO. 2 OF 3

Historic Window & Door Holdings  
12 Forest Road, Junction 123&123A  
P.O. Box 138  
Alstead, N.H. 03602-0138







#34 BEACON STREET, BEACON HILL  
BOSTON, M.A. 02108  
SIDE VIEW OF ALL MILLED SASH PARTS  
SASH PARTS / CUT AWAY  
SHEET NO 3 OF 3

Historic Window & Door Holdings  
12 Forest Road, Junction 123&123A  
P.O. Box 138  
Alstead, N.H. 03602-0138



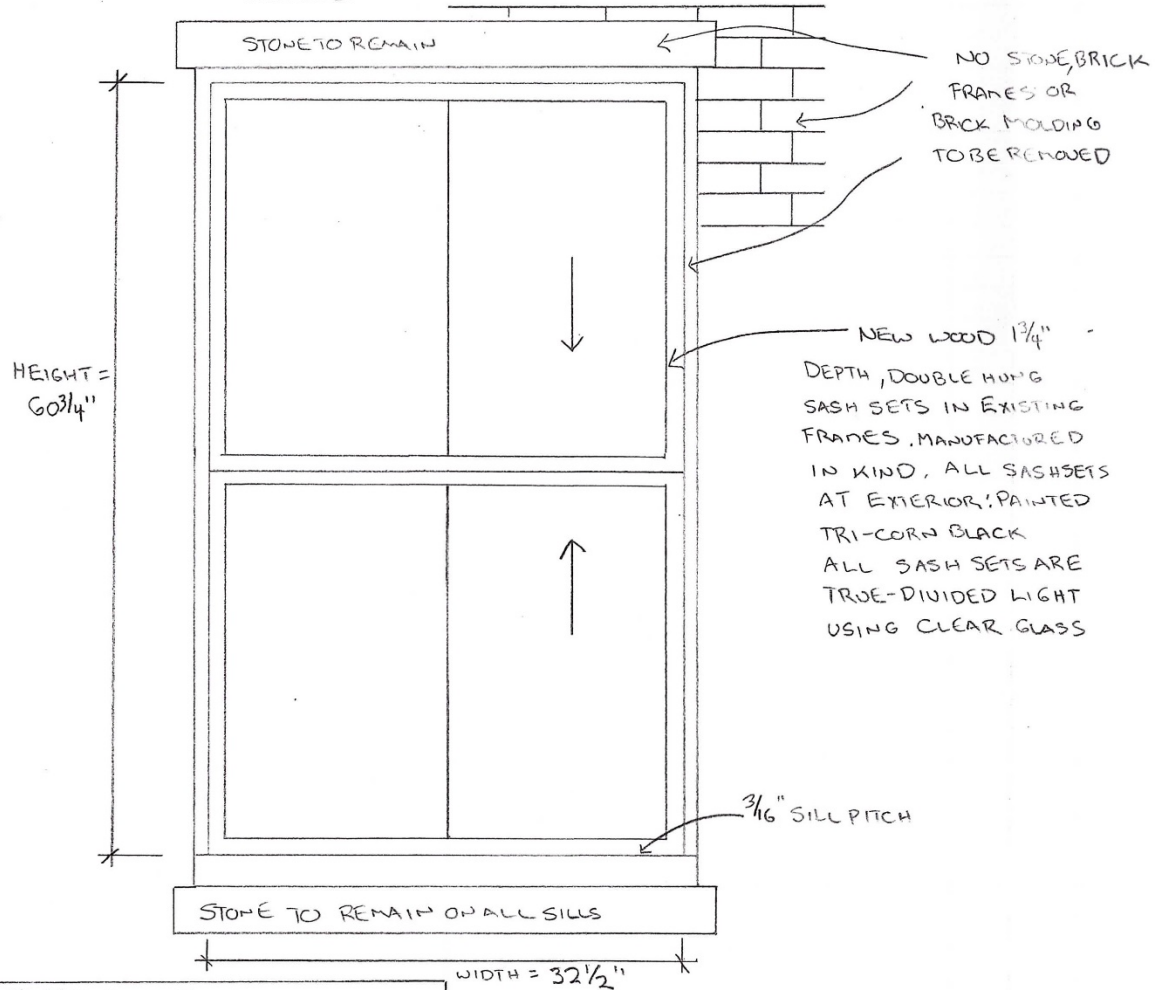


# Window Scope

Remove/Replace (1) non original 2 over 2 windows at the Garage



1ST FLOOR = 1 TOTAL : 2 OVER 2, DOUBLE HUNG  
SASH SETS



# 34 BEACON STREET, BEACON HILL  
BOSTON, M.A. 02108

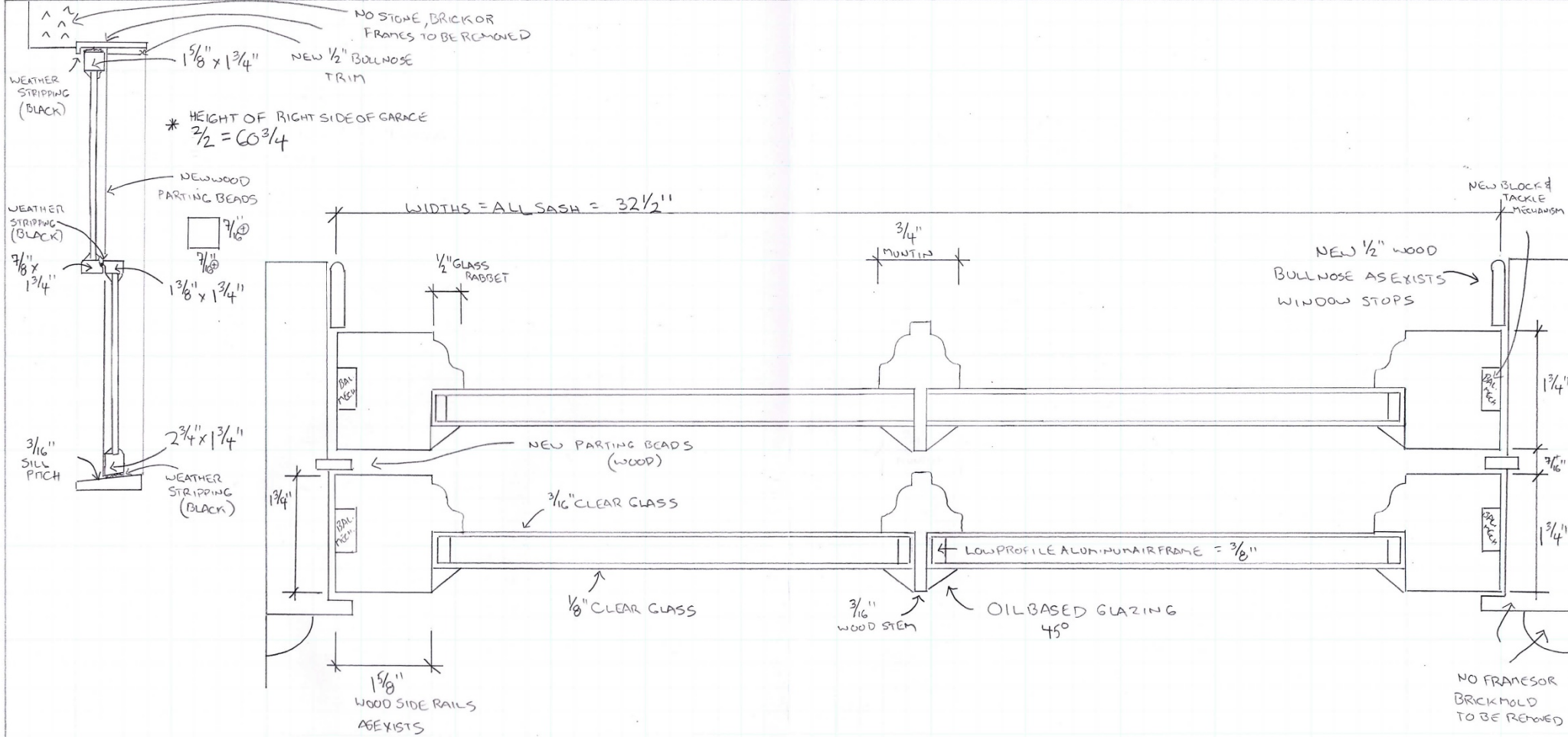
FACING GARAGE AT SIDE

FRONT VIEW, SASH SETS

SHEET NO. 1 OF 1

Historic Window & Door Holdings  
12 Forest Road, Junction 123&123A  
P.O. Box 138  
Alstead, N.H. 03602-0138





#34 BEACON STREET, BEACON HILL  
 BOSTON, M.A. 02108

OVER HEAD VIEW & SIDE VIEW

CUT AWAY OF BUILD

SHEET NO. 1 OF 1

Historic Window & Door Holdings  
 12 Forest Road, Junction 123&123A  
 P.O. Box 138  
 Alstead, N.H. 03602-0138

EXISTING WINDOW IS: NON-ORIGINAL  
 2 OVER 2 LIGHTS  
 SIMULATED DIVIDED LIGHT

RIGHT SIDE OF GARAGE DOOR  
 2 OVER 2 LIGHTS 1 TOTAL

\* ALL NEW WOOD SASH PAINTED  
 TRI-CORN BLACK AT EXTERIOR







**SEA-DAR**  
**CONSTRUCTION**