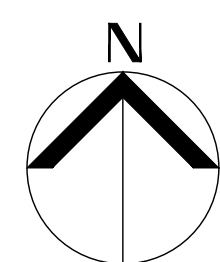




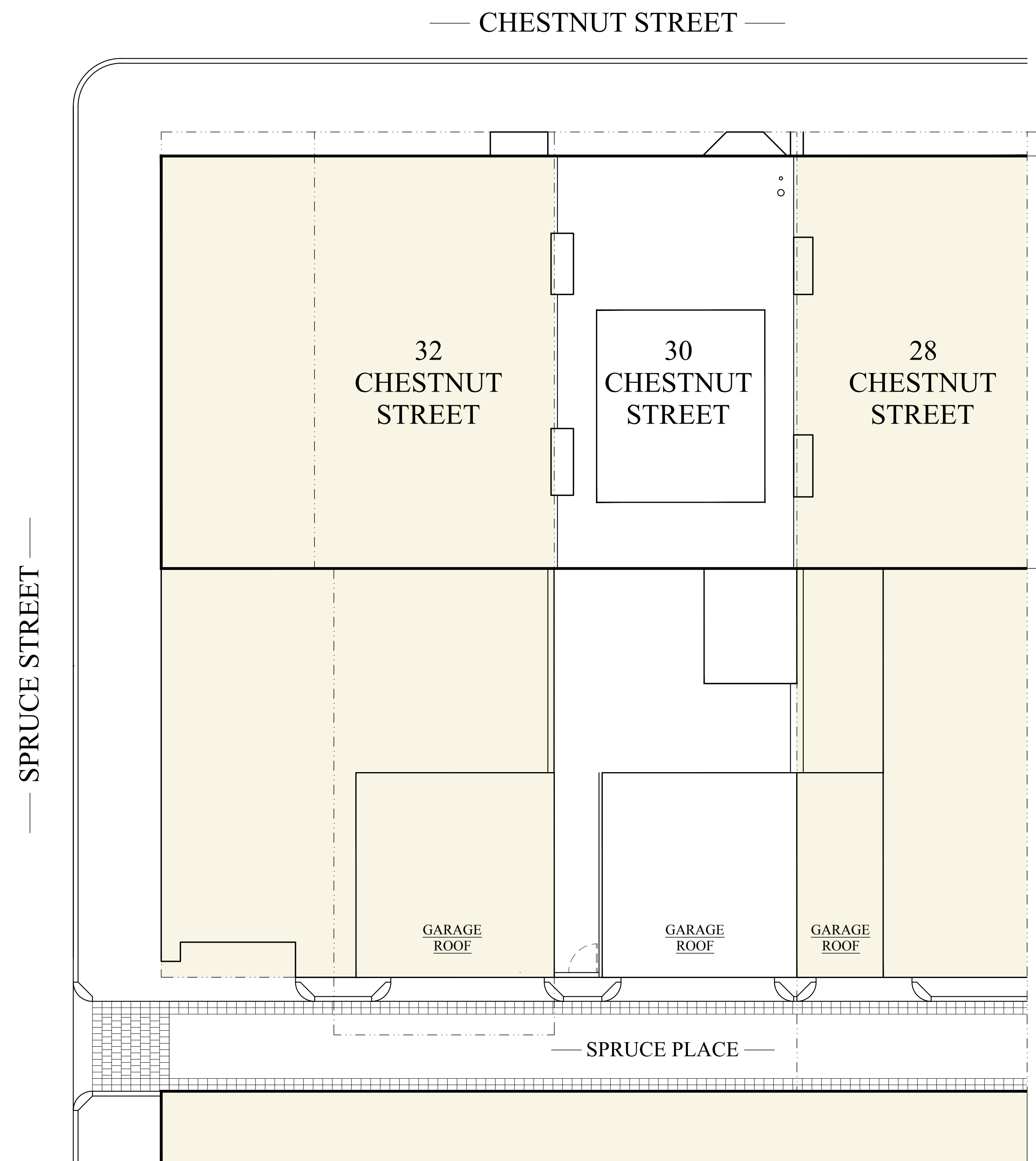
LOCUS MAP
(from BPDA Zoning Viewer)



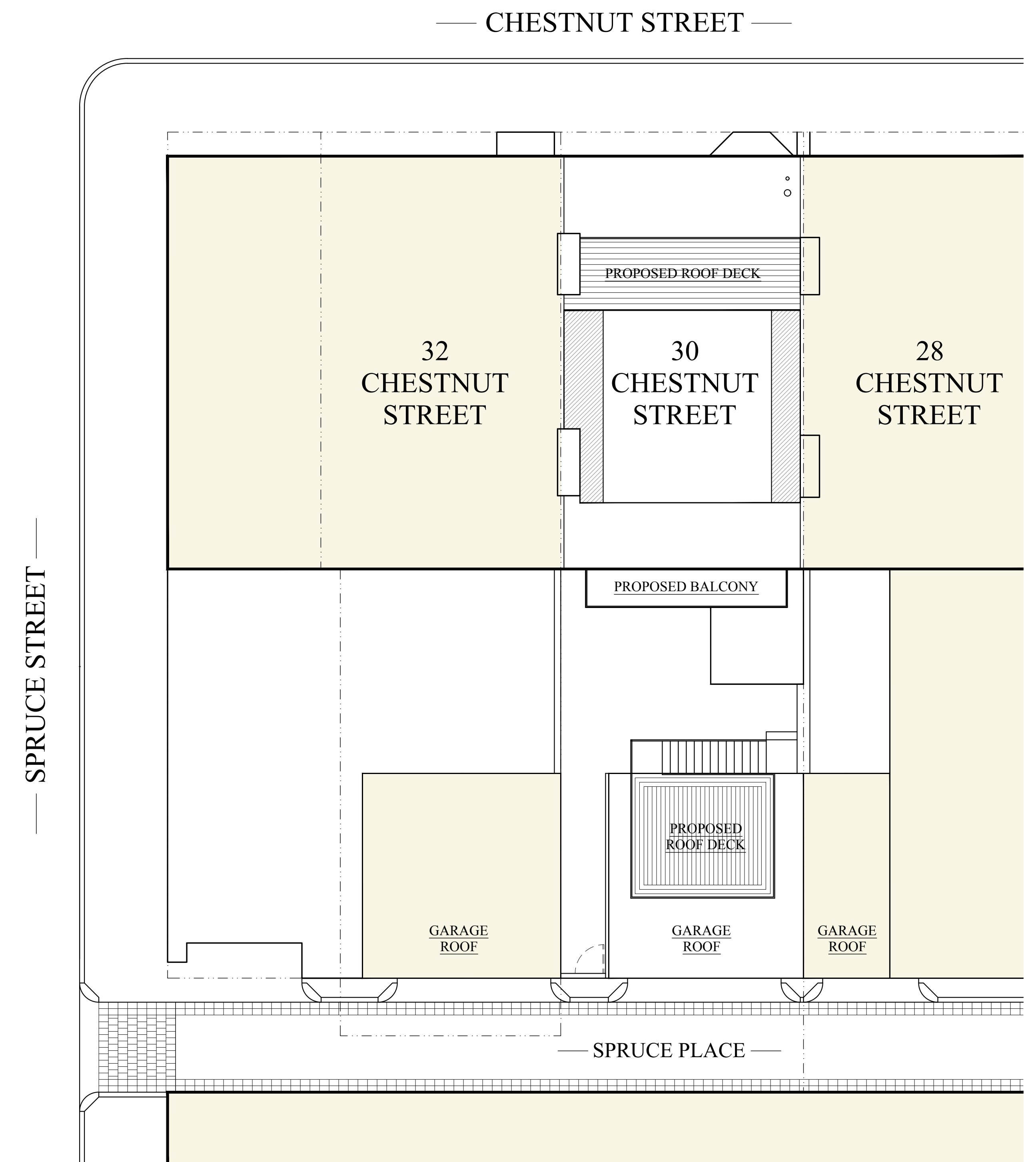
FRONT ELEVATION



REAR ELEVATION



1 EXISTING SITE PLAN
NTS

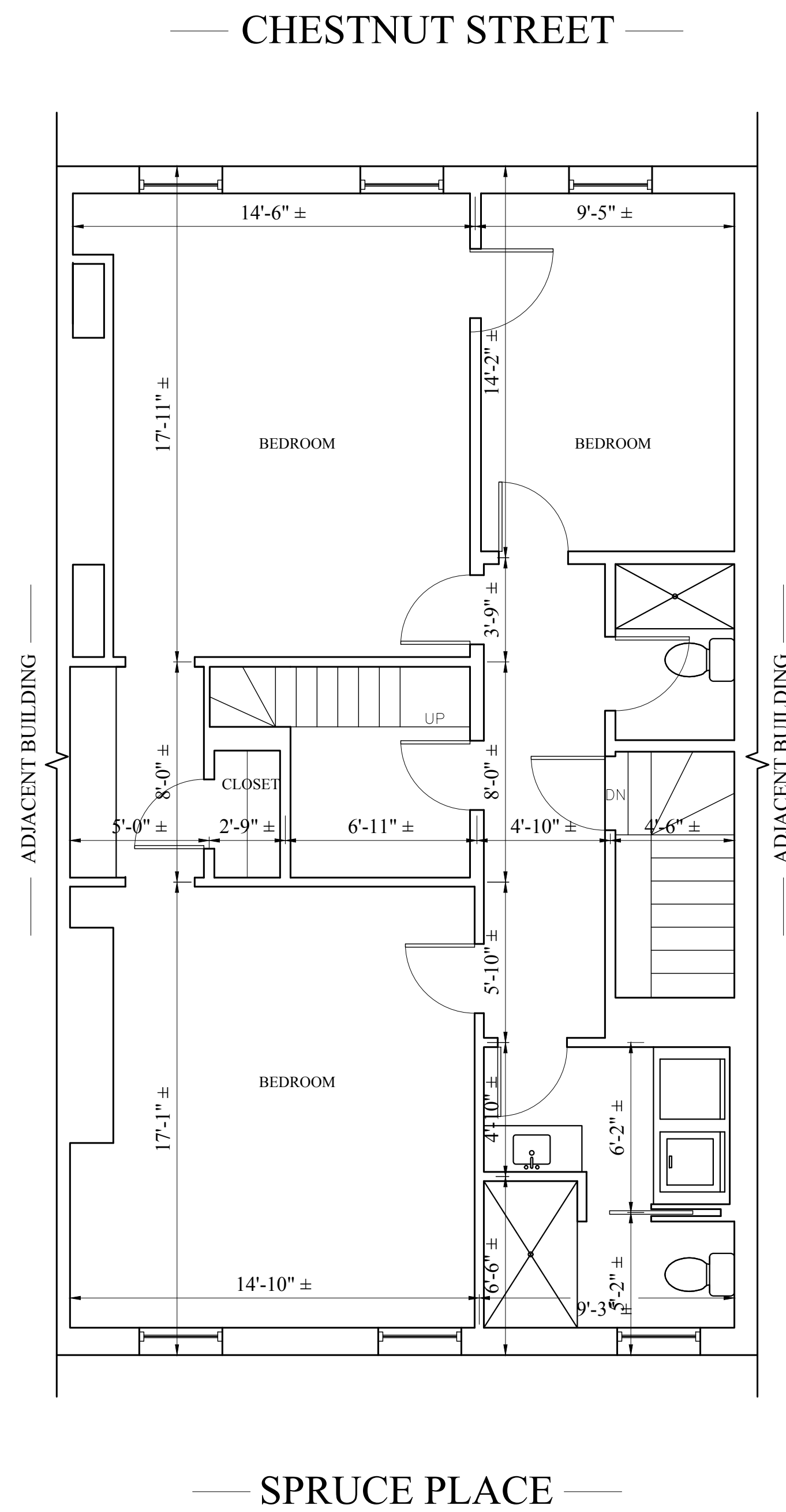


2 PROPOSED SITE PLAN
NTS

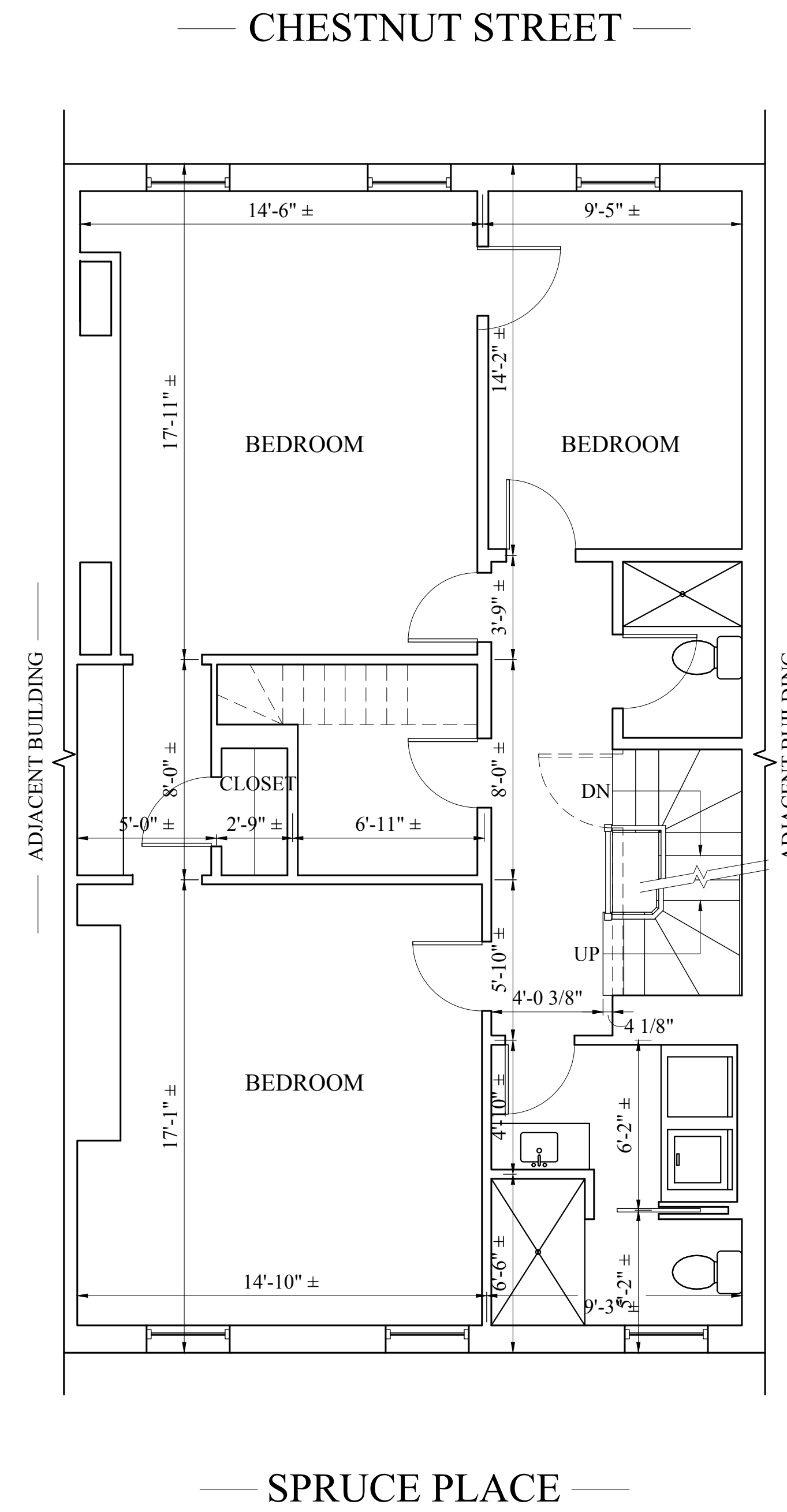


1 EXISTING CHESTNUT STREET ELEVATION
1/4" = 1'-0"



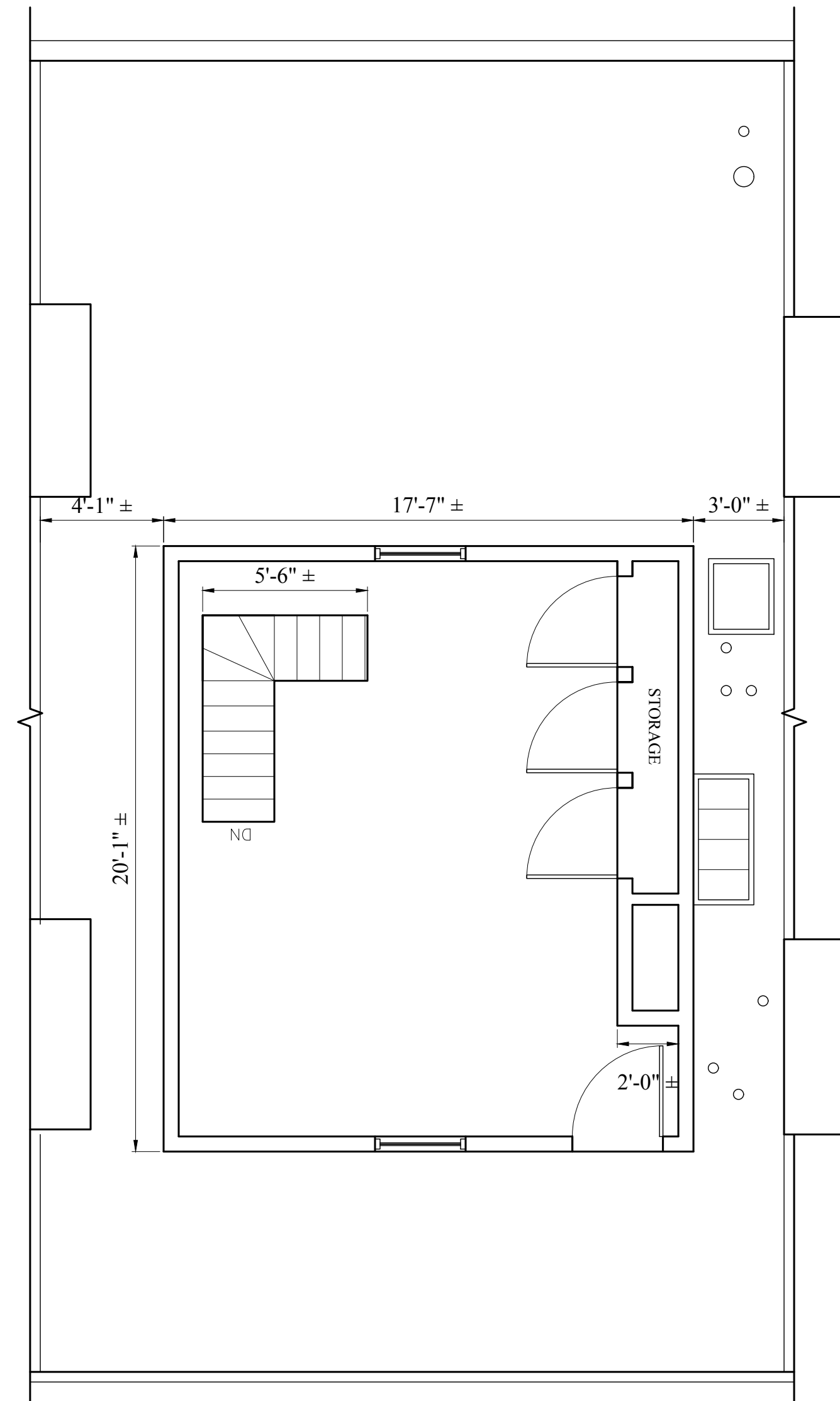


1 EXISTING FOURTH FLOOR PLAN
1/4" = 1'-0"



2 PROPOSED FOURTH FLOOR PLAN
1/4" = 1'-0"

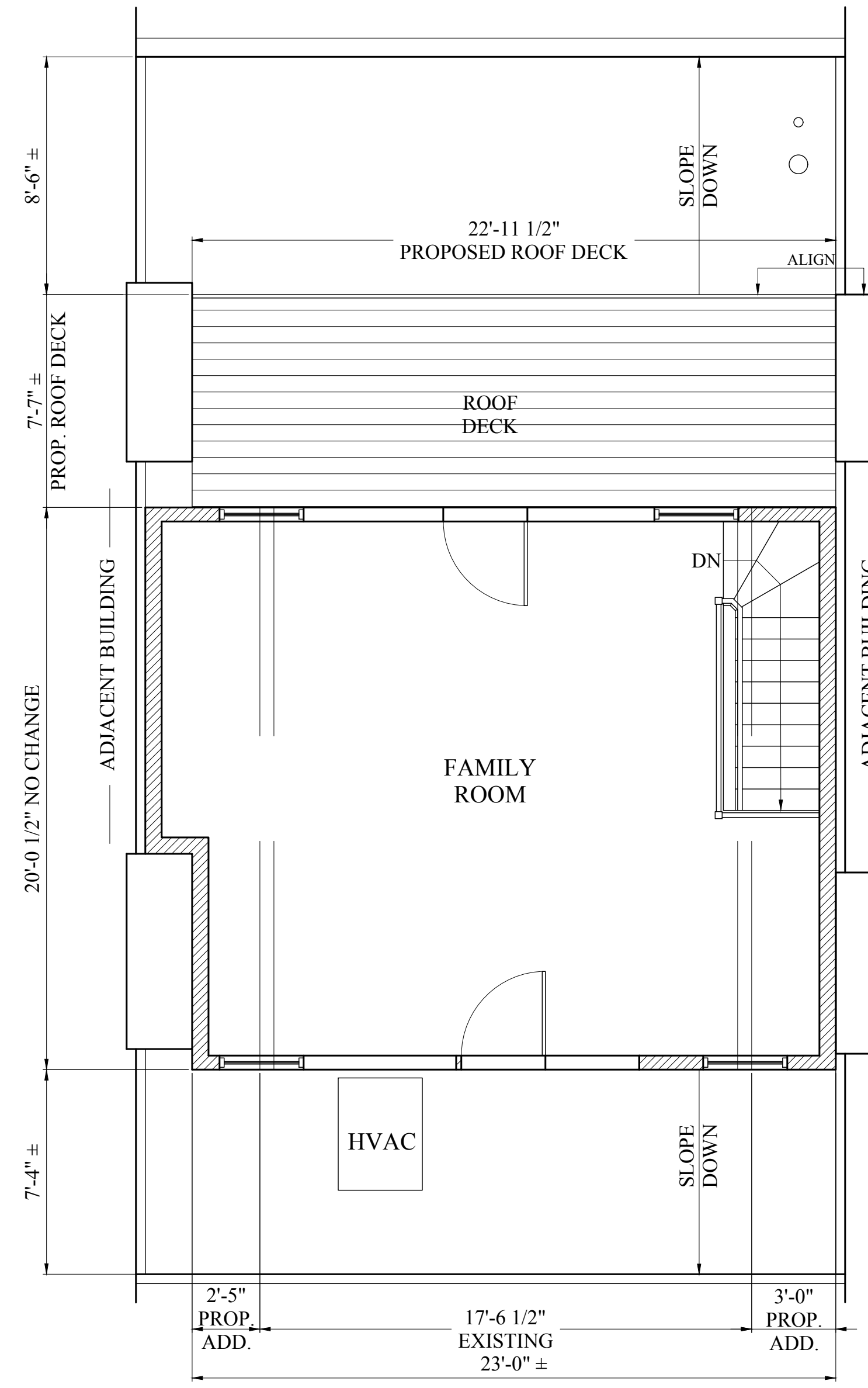
— CHESTNUT STREET —



— SPRUCE PLACE —

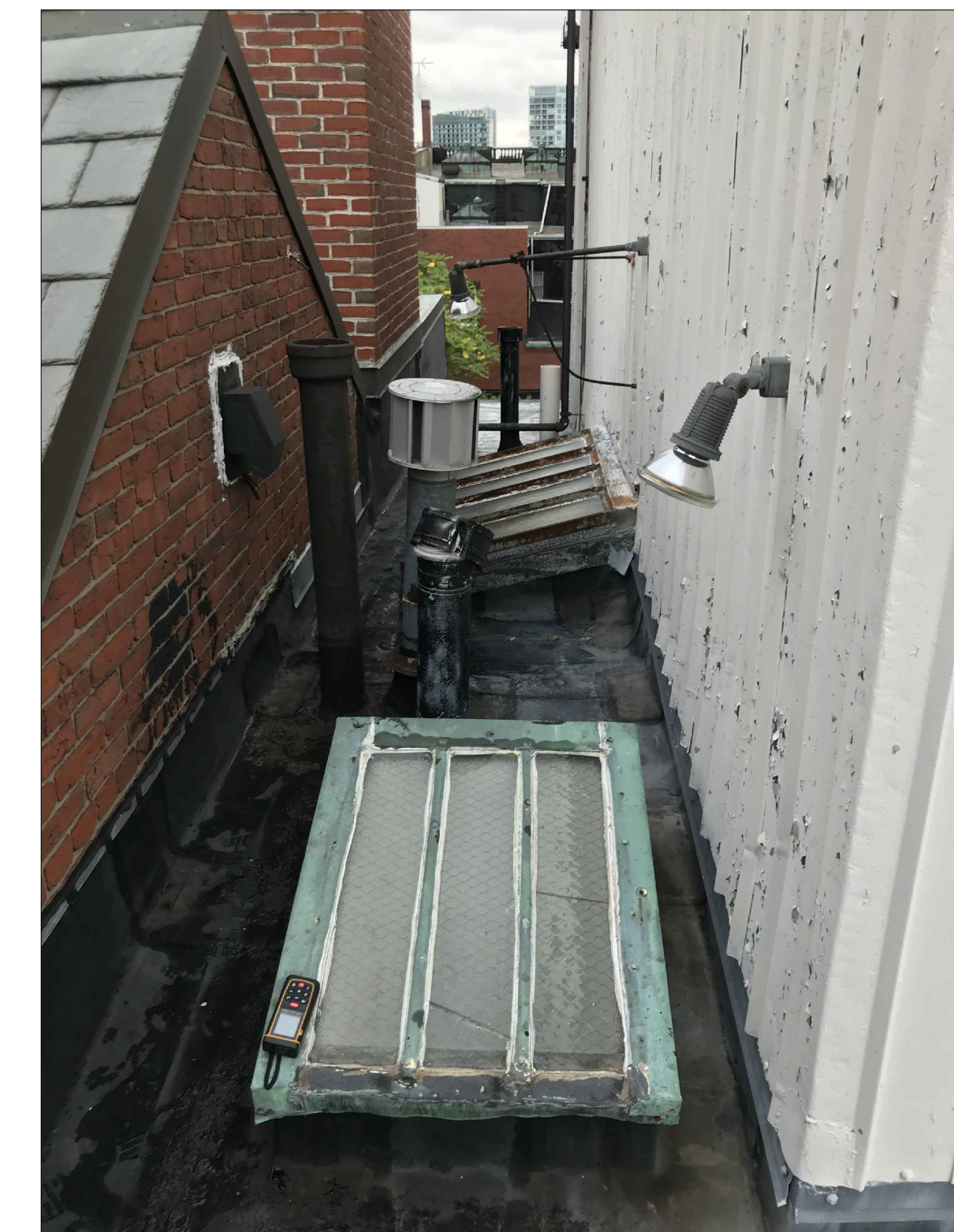
1 EXISTING FIFTH FLOOR PLAN
1/4" = 1'-0"

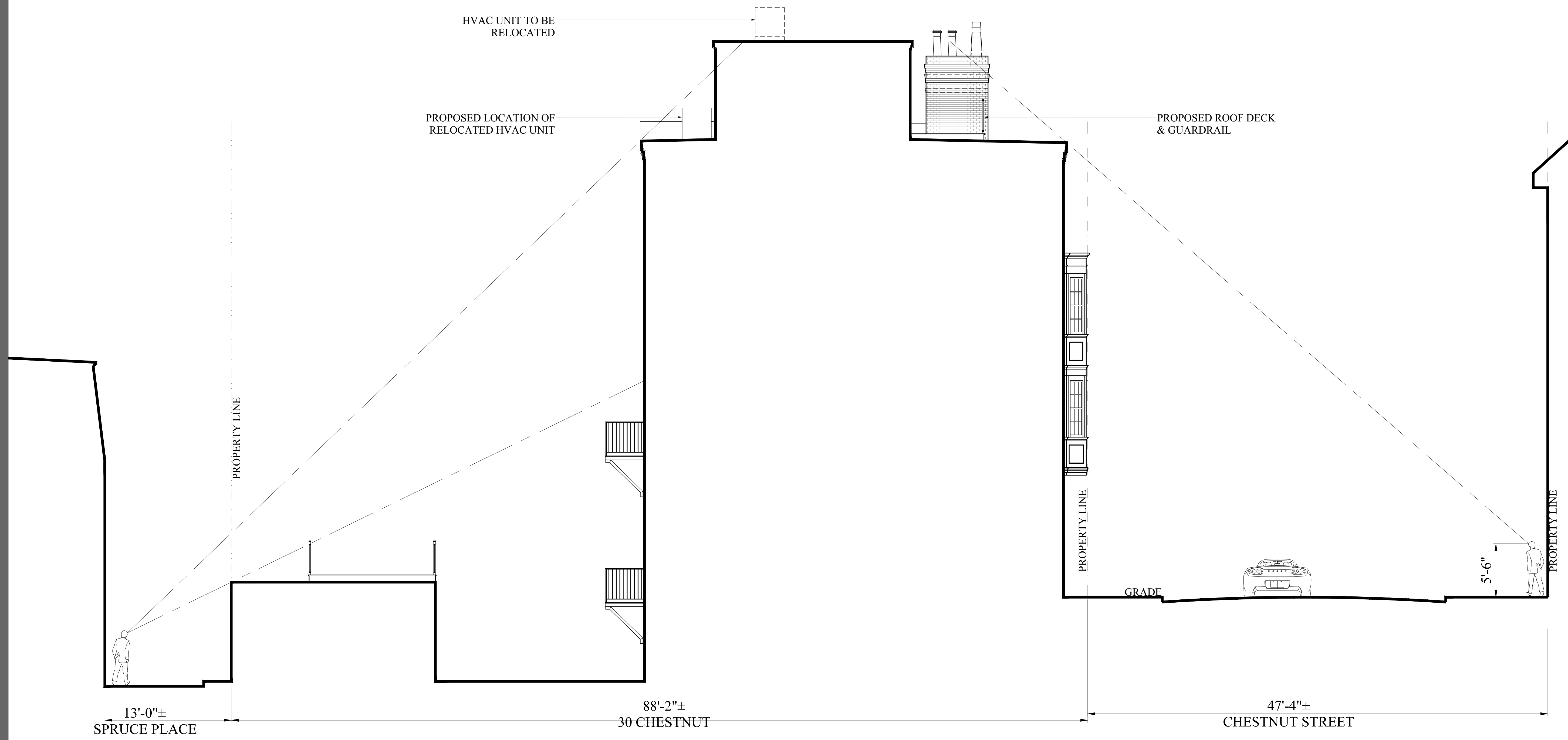
— CHESTNUT STREET —



— SPRUCE PLACE —

2 PROPOSED FIFTH FLOOR PLAN
1/4" = 1'-0"





PROPOSED SITE SECTION FROM SPRUCE PLACE THROUGH CHESTNUT STREET



1 EXISTING SPRUCE PLACE ELEVATION
1/4" = 1'-0"

Choo & Company, Inc.
 One Billings Road Quincy, MA 02171
 617-786-7727 fax 617-786-7715

30 CHESTNUT STREET, BOSTON, MA 02108





HVAC UNIT TO BE RELOCATED

RELOCATED HVAC UNIT

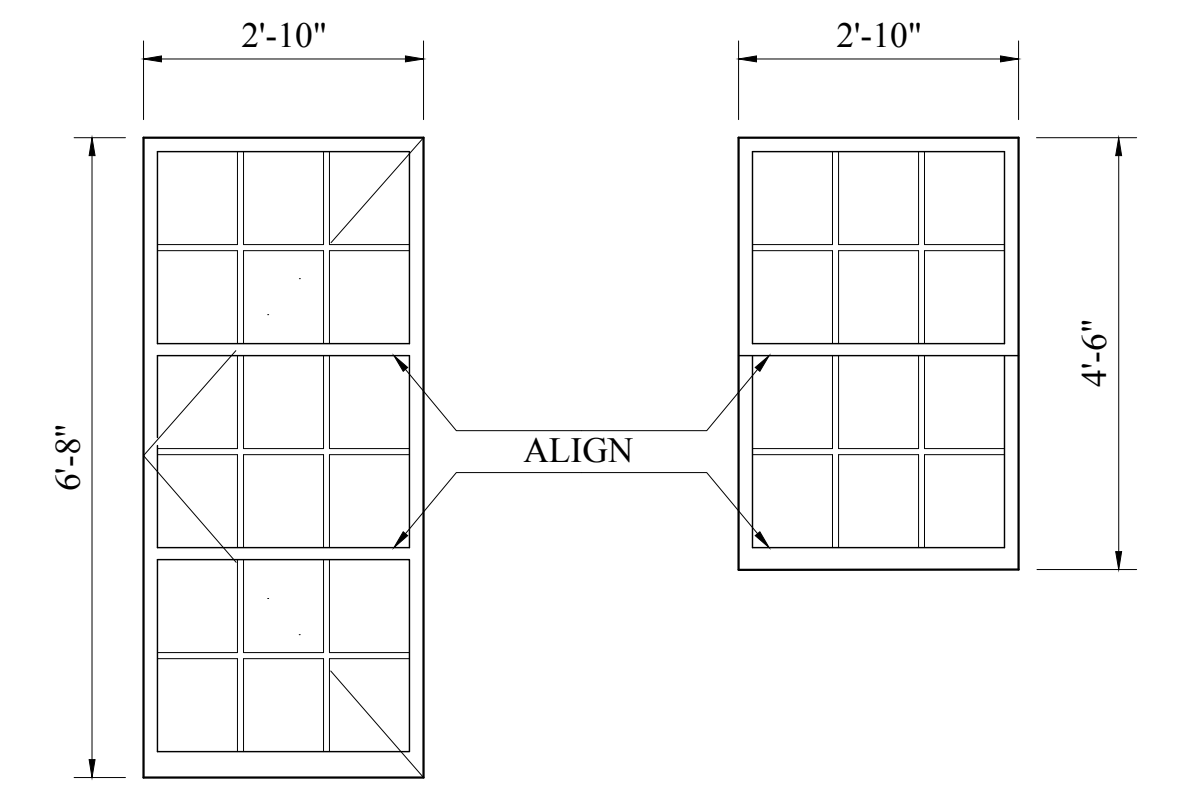
NEW WOOD WINDOWS, TYP.

CLEAN ALL MASONRY W/
WATER & GENTLE
DETERGENT
RE-POINT BRICK AS REQUIRED
W/ FOLLOWING MORTAR MIX;
1 PART CEMENT
2 PARTS LIME
7-9 PARTS SAND

NEW STEEL CANTILEVERED
BALCONY W/ BRACKETS, 1ST &
2ND FLOORS, PAINTED BLACK

NEW ROOF DECK & STEEL
GUARDRAIL, PAINTED BLACK

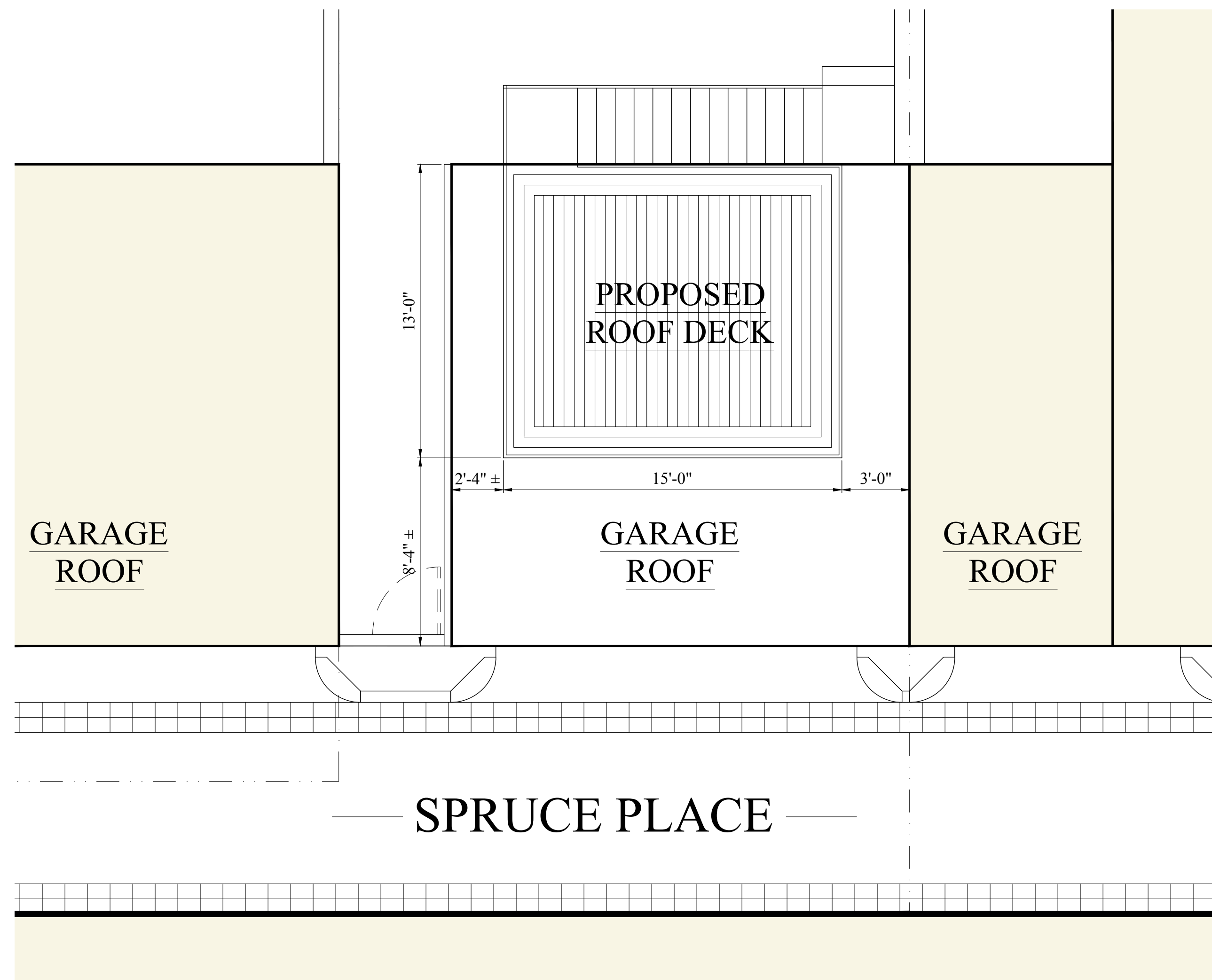
NEW COPPER GUTTER &
RELOCATE DOWNSPOUT
TO COURTYARD
REPAIR EX'G CAST STONE
HEADER



PROPOSED 5TH FLR DOOR PROPOSED 5TH FLR WINDOW

2 PROPOSED DOOR & WINDOW TYPES
NTS

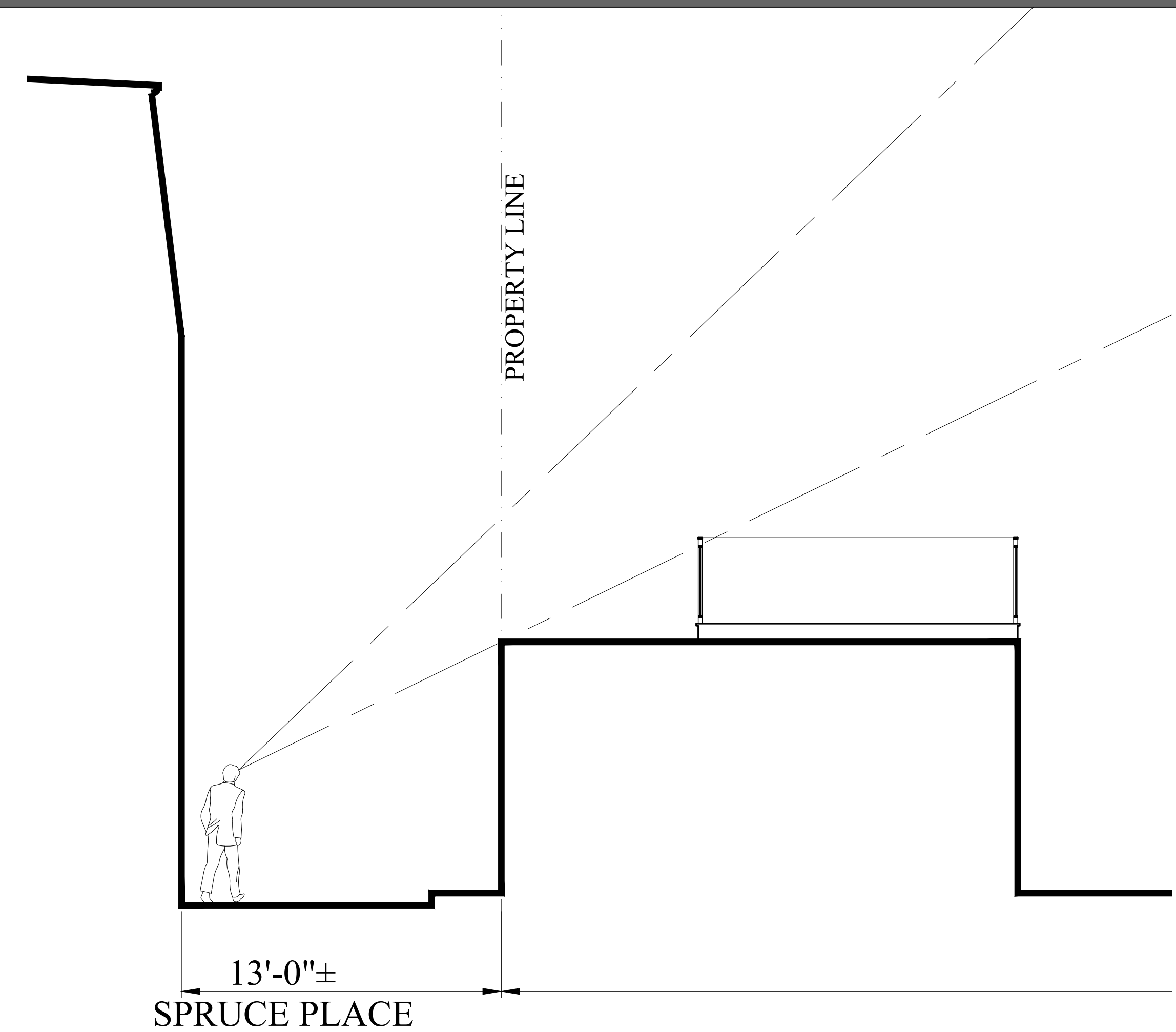
1 PROPOSED SPRUCE PLACE ELEVATION
1/4" = 1'-0"

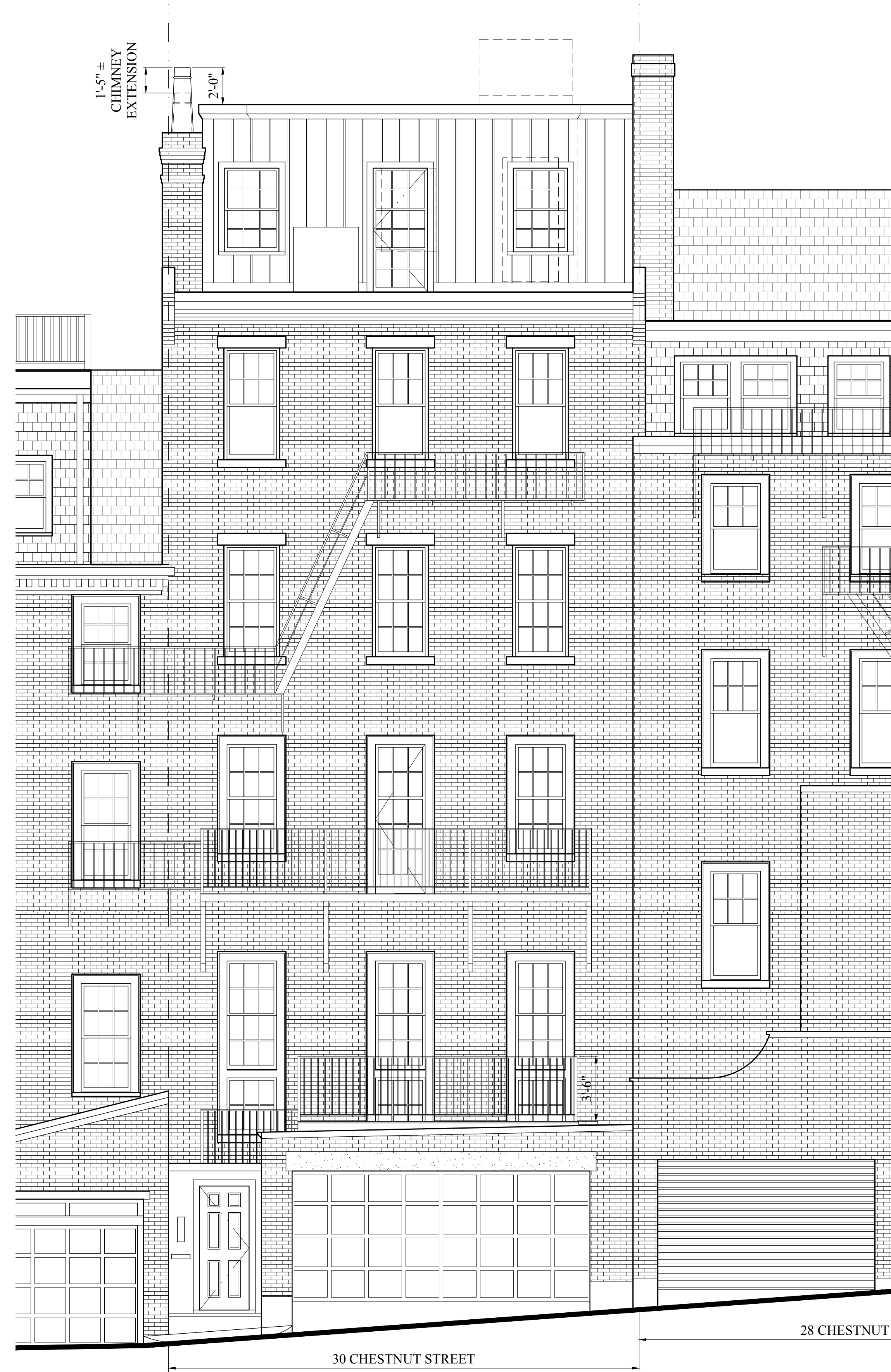


1 PROPOSED GARAGE ROOF PLAN
NTS

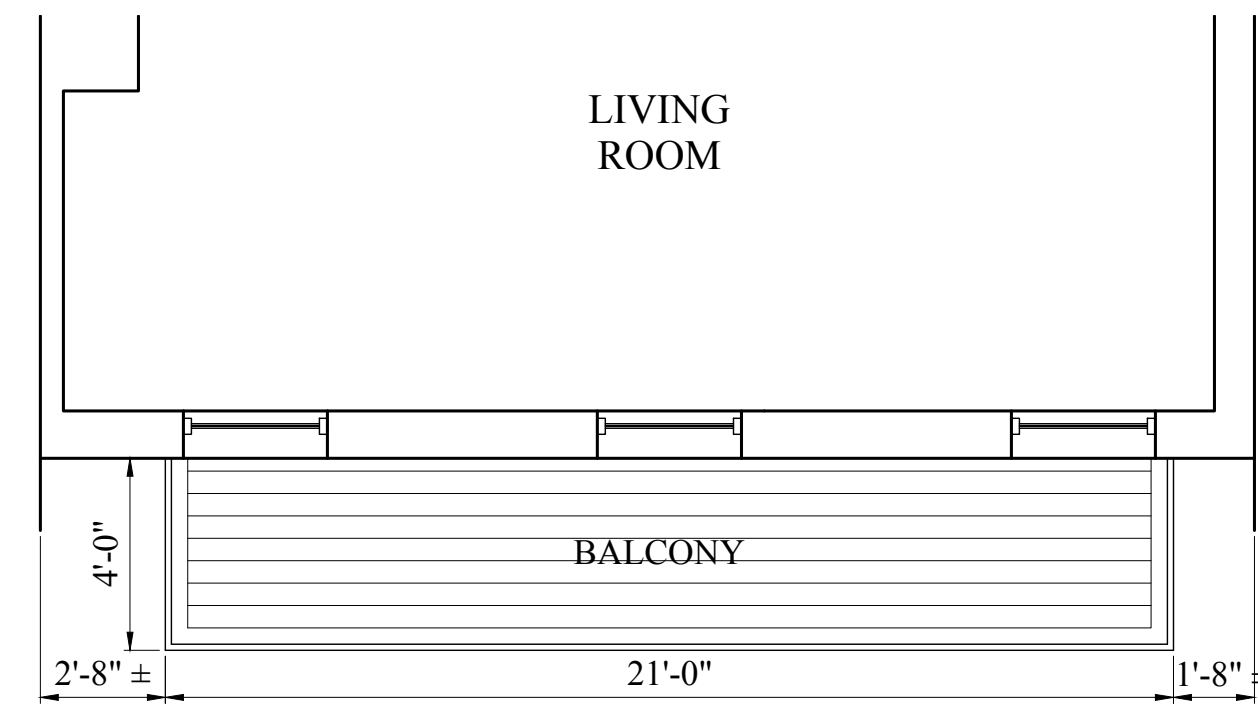


2 PROPOSED GARAGE ROOF DECK ELEVATION
NTS



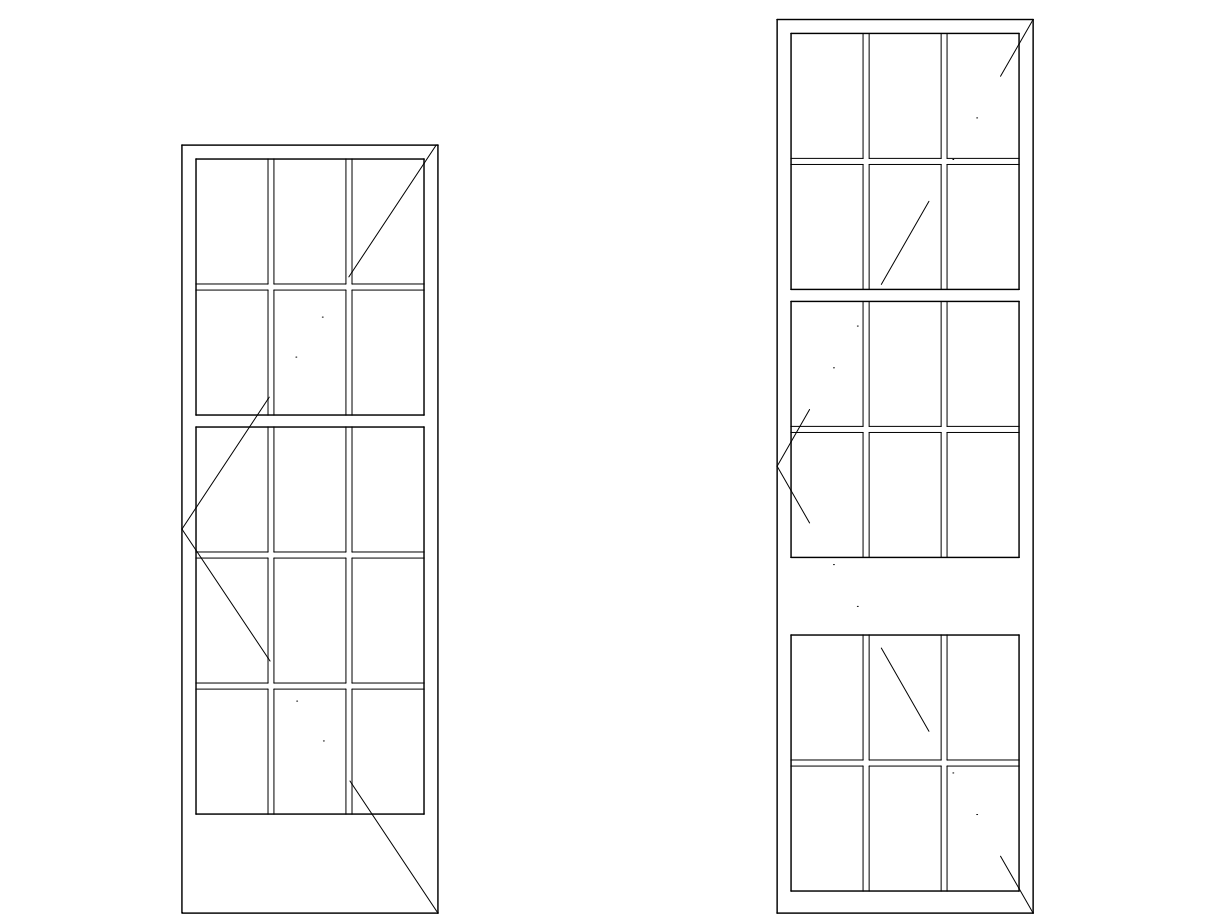


1 PROPOSED REAR ELEVATION
NTS



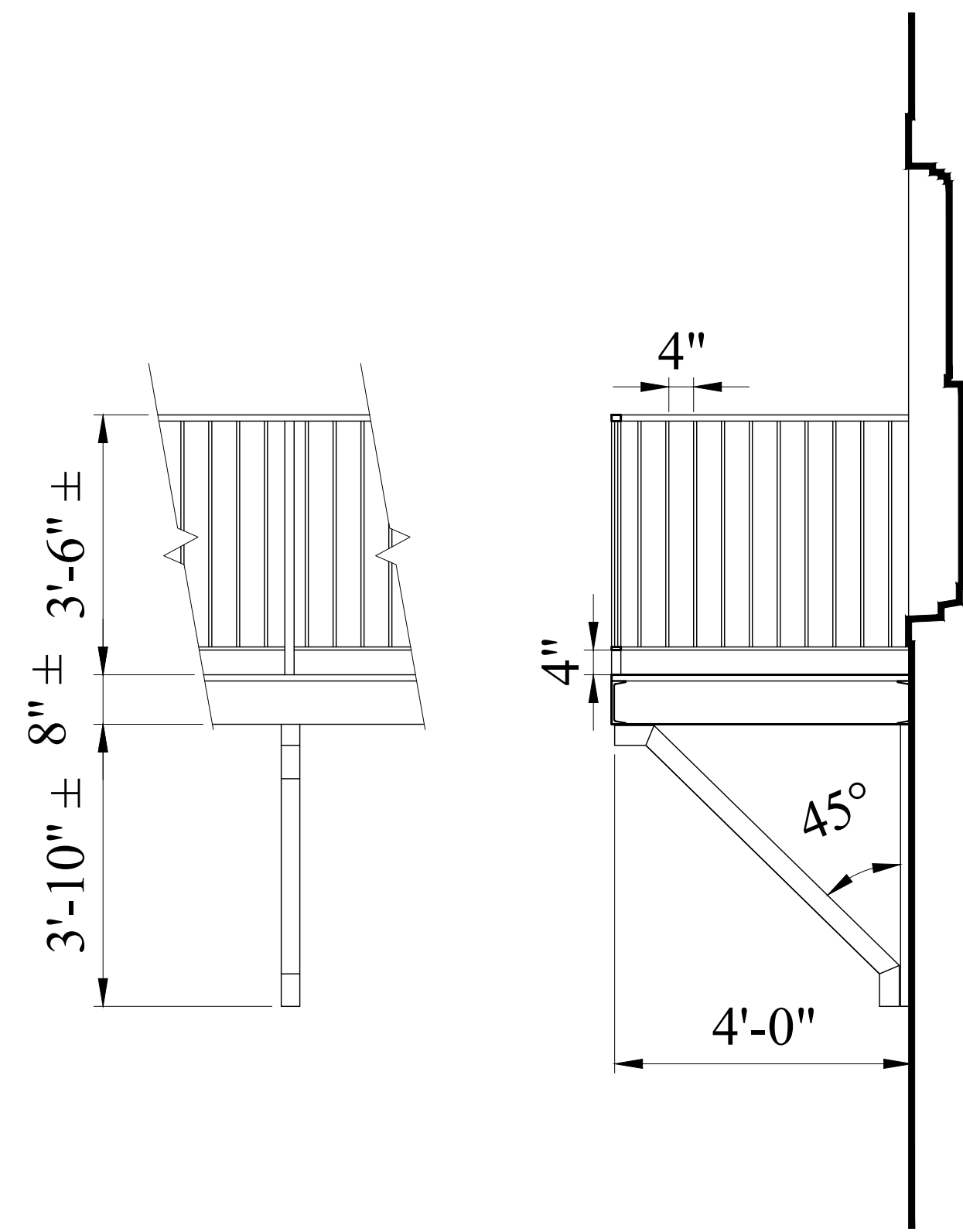
— SPRUCE PLACE —

3 PROPOSED BALCONY PLAN, 1ST & 2ND FLOORS
NTS

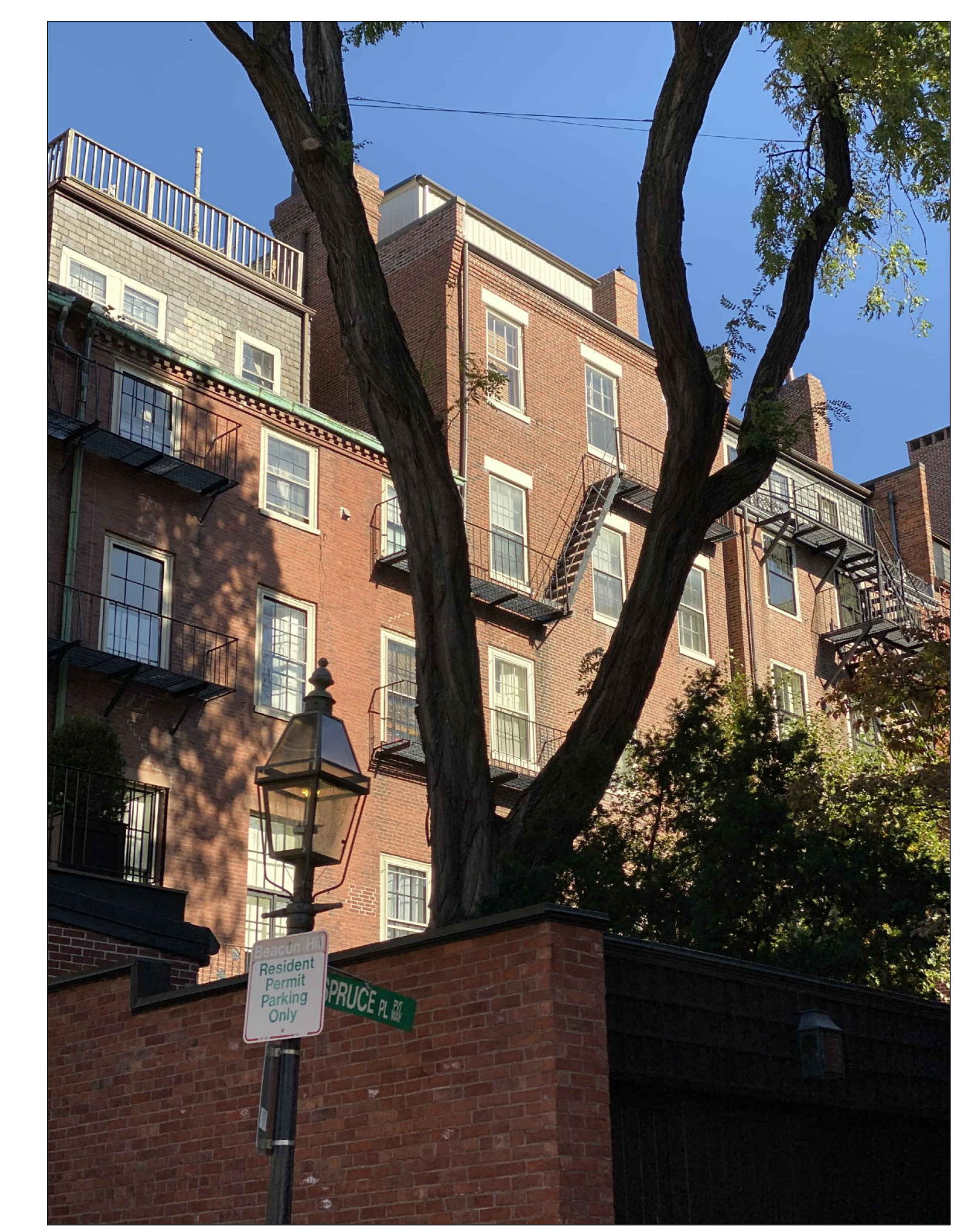


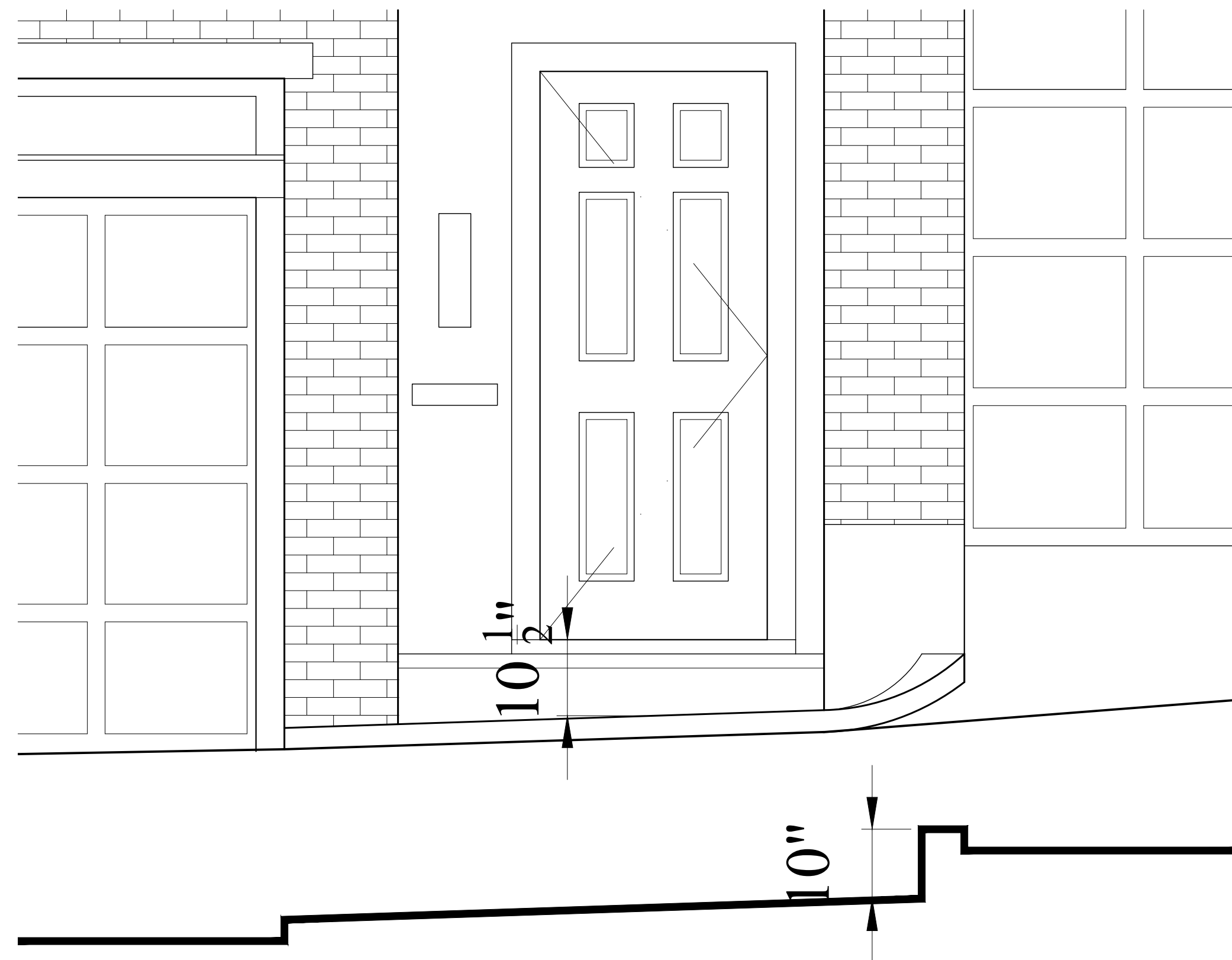
PROPOSED 2ND FLR DOOR PROPOSED 1ST FLR DOOR

4 PROPOSED DOOR TYPES
NTS



2 PROPOSED ELEVATION DETAIL & SECTION
NTS



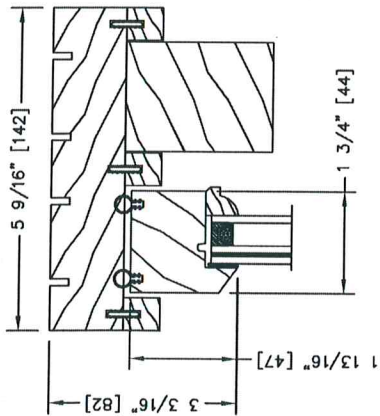


1 EXISTING SPRUCE PLACE CURB ELEVATION & SECTION
1/4" = 1'-0"

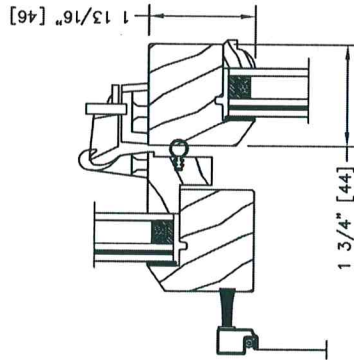


2 PROPOSED SPRUCE PLACE CURB ELEVATION & SECTION
1/4" = 1'-0"

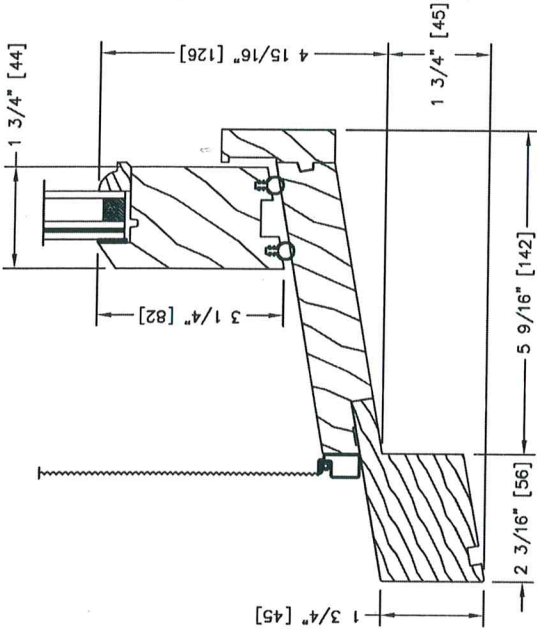




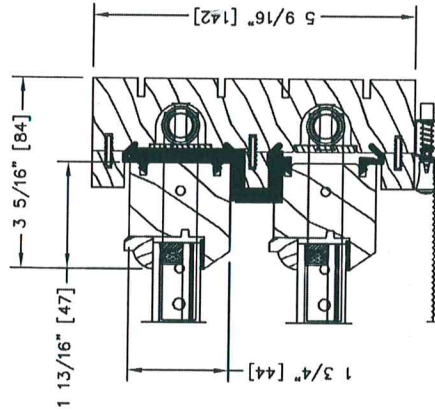
WOOD XL-100 DOUBLE HUNG HEAD JAMB
 PUTTY EXT / COLONIAL STOPS INTER W/ .060 LAMINATED GLASS
 5 9/16" JAMBS, VERTICAL DETAIL



WOOD XL-100 DOUBLE HUNG CHECK RAIL W/ HALF SCREEN
 PUTTY EXT / COLONIAL STOPS INTER W/ .060 LAMINATED GLASS
 VERTICAL DETAIL



WOOD XL-100 DOUBLE HUNG W/ HISTORIC NOSING SHIPPED LOOSE
 PUTTY EXT / COLONIAL STOPS INTER W/ .060 LAM GLASS
 HALF SCREEN, 5 9/16" JAMBS, VERTICAL DETAIL



WOOD XL-100 DOUBLE HUNG SIDE JAMB
 PUTTY EXT / COLONIAL STOPS INTER W/ .060 LAMINATED GLASS
 W/ HALF SCREEN, 5 9/16" JAMBS, HORIZONTAL DETAIL



141, CHEMIN DES RAYMOND
 CP 1598 GSR AL9
 RIVIERE-DU-Loup
 TEL: (418) 862-2611
 FAX: (418) 862-2391

PAGE: D2
 3RD REV:
 4TH REV:
 5TH REV:

1ST REV:
 2ND REV:

CUSTOMER:

JOB:

SCALE:

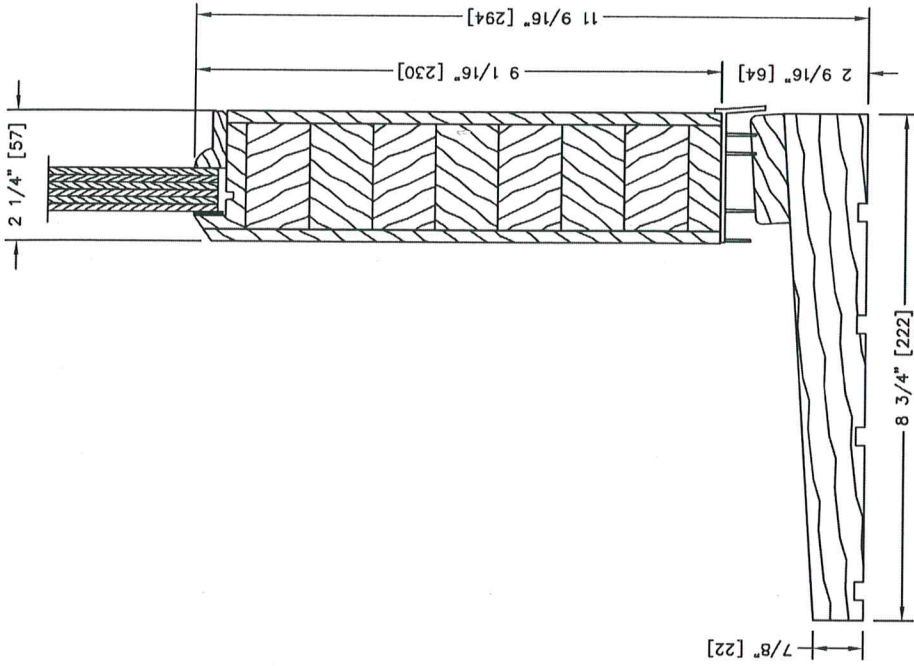
SALES REP:

INSIDE REP:

DRAWN BY:

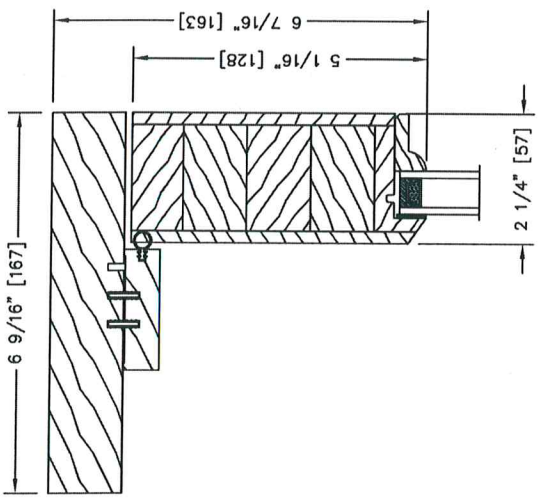
DATE:

(C)



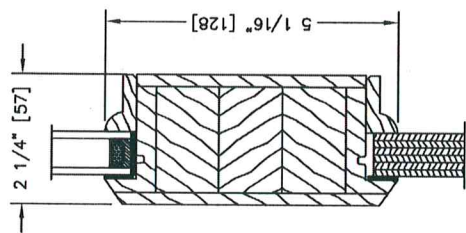
WOOD 2 1/4" IN-SWING FRENCH DOOR ALL MAHOGANY SILL
PUTTY EXT / COLONIAL STOPS INTER W/ FLAT PANEL IN & OUT
6 9/16" JAMBS, VERTICAL DETAIL

(A)



WOOD 2 1/4" IN-SWING FRENCH DOOR HEAD JAMB
PUTTY EXT / COLONIAL STOPS INTER
6 9/16" JAMBS, VERTICAL DETAIL

(B)



WOOD 2 1/4" IN-SWING FRENCH DOOR MID RAIL
PUTTY EXT / COLONIAL STOPS INTER / FLAT PANEL IN & OUT
VERTICAL DETAIL

PAGE:	D4
3RD REV:	10-15-18
4TH REV:	
1ST REV:	
2ND REV:	
5TH REV:	

CUSTOMER:

SCALE:

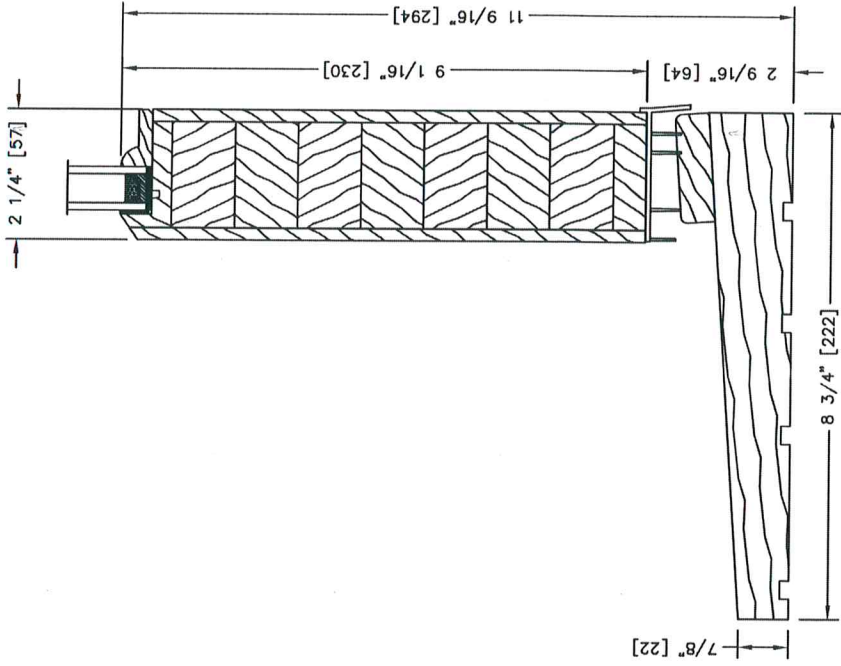
SALES REP:

INSIDE REP:

DRAWN BY:

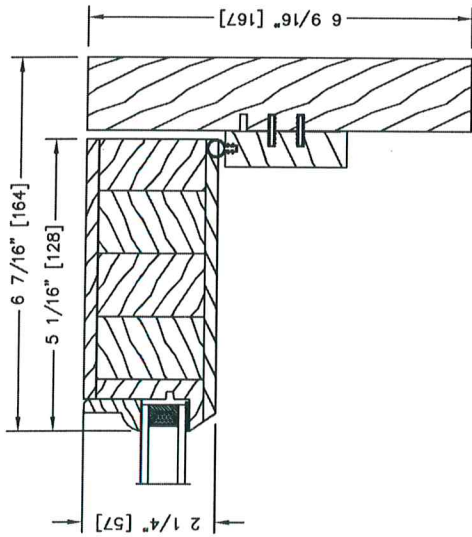
QUOTE:

DRAWING NUMBER:



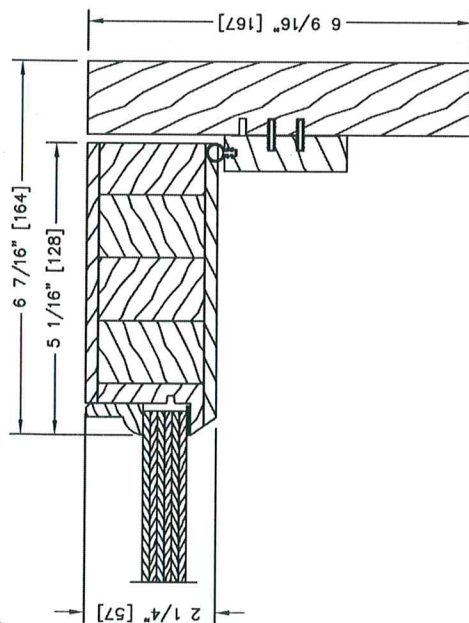
WOOD 2 1/4" IN-SWING FRENCH DOOR ALL MAHOGANY SILL
PUTTY EXT / COLONIAL STOPS INTER
6 9/16" JAMBS, VERTICAL DETAIL

(C)



WOOD 2 1/4" IN-SWING FRENCH DOOR SIDE JAMB
PUTTY EXT / COLONIAL STOPS INTER
6 9/16" JAMBS, HORIZONTAL DETAIL

(A)



WOOD 2 1/4" IN-SWING FRENCH DOOR SIDE JAMB
PUTTY EXT / COLONIAL STOPS INTER W/ FLAT PANEL IN & OUT
6 9/16" JAMBS, HORIZONTAL DETAIL

(B)