



UNO

725

Closed

A

TYPHOON
ENTRANCE

NOW
HIRING

Handwritten signature or scribble on a dark surface in the foreground.



verizon

UNO

UNO

USPS







PNC - BOSTON

731 Boylston St.
Boston, MA 02116



2019190.08

THE COLORS AND MATERIALS SHOWN IN THIS RENDERING ARE CLOSE APPROXIMATIONS AND NOT AN EXACT MATCH. RENDERING IS TO BE CONSIDERED FOR VISUAL DESIGN INTENT ONLY AND NOT FOR CONSTRUCTION.



1.800.955.4731 www.gpdgroup.com



VIEW #1 LOOKING NORTH ON BOYLSTON ST

PNC - BOSTON

731 Boylston St.
Boston, MA 02116



2019190.08

THE COLORS AND MATERIALS SHOWN IN THIS RENDERING ARE CLOSE APPROXIMATIONS AND NOT AN EXACT MATCH. RENDERING IS TO BE CONSIDERED FOR VISUAL DESIGN INTENT ONLY AND NOT FOR CONSTRUCTION.



1.800.955.4731 www.gpdgroup.com



VIEW #2 LOOKING WEST ON BOYLSTON ST

PNC - BOSTON

731 Boylston St.
Boston, MA 02116



2019190.08

THE COLORS AND MATERIALS SHOWN IN THIS RENDERING ARE CLOSE APPROXIMATIONS AND NOT AN EXACT MATCH. RENDERING IS TO BE CONSIDERED FOR VISUAL DESIGN INTENT ONLY AND NOT FOR CONSTRUCTION.



1.800.955.4731 www.gpdgroup.com



VIEW #3 LOOKING EAST ON BOYLSTON ST

PNC - BOSTON

731 Boylston St.
Boston, MA 02116



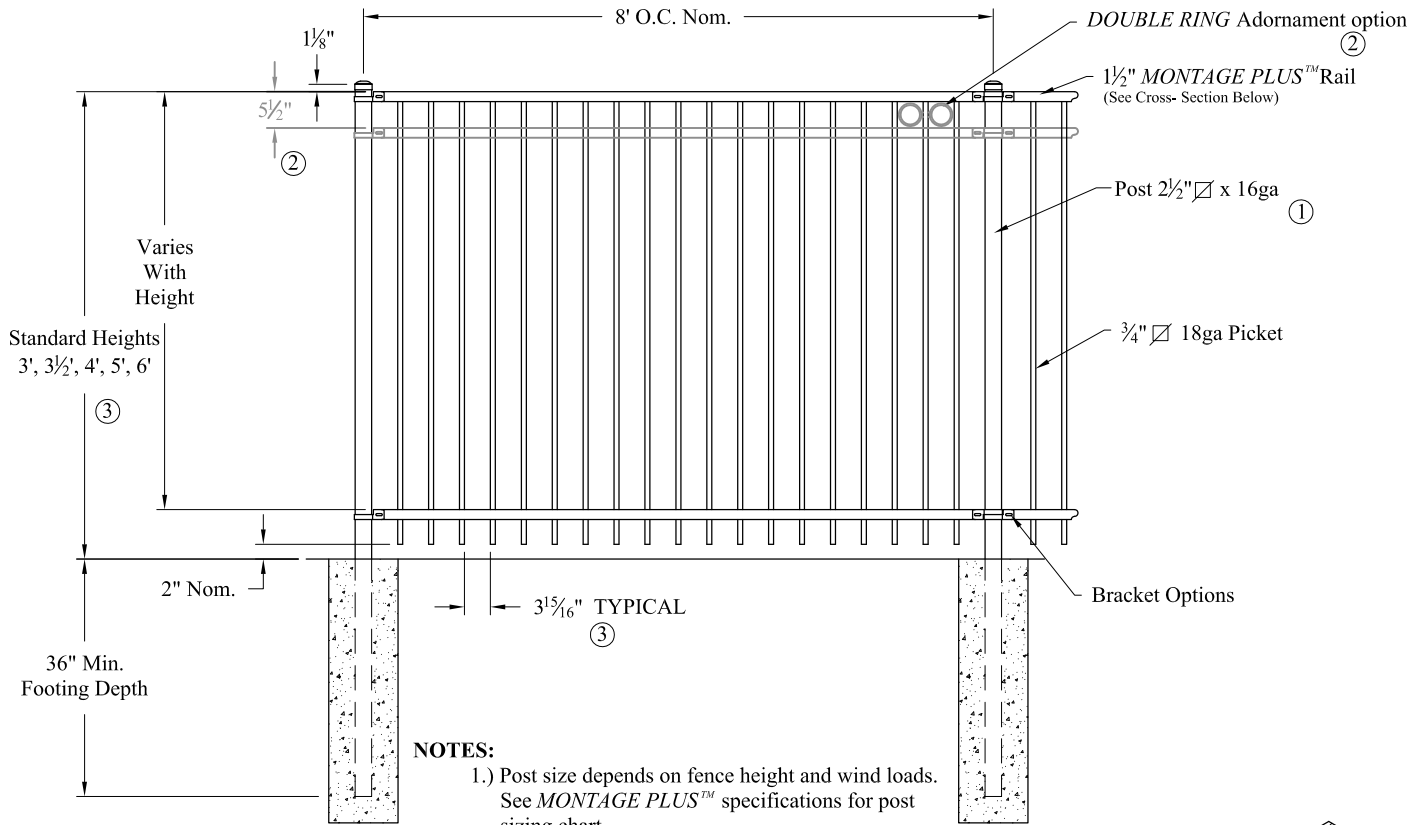
2019190.08

THE COLORS AND MATERIALS SHOWN IN THIS RENDERING ARE CLOSE APPROXIMATIONS AND NOT AN EXACT MATCH. RENDERING IS TO BE CONSIDERED FOR VISUAL DESIGN INTENT ONLY AND NOT FOR CONSTRUCTION.



1.800.955.4731 www.gpdgroup.com





NOTES:

- 1.) Post size depends on fence height and wind loads. See *MONTAGE PLUS™* specifications for post sizing chart.
- 2.) Third rail required for *Double Rings*.
- 3.) Available in 3" air space and/or Flush Bottom on most heights.

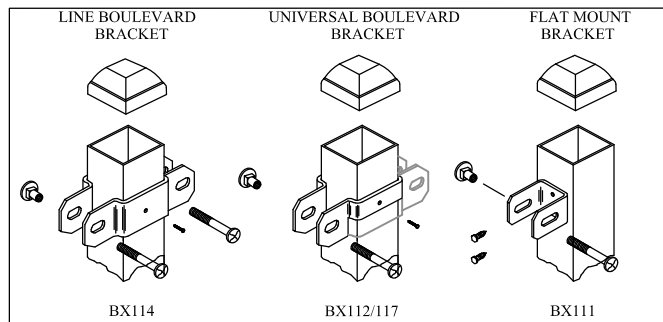
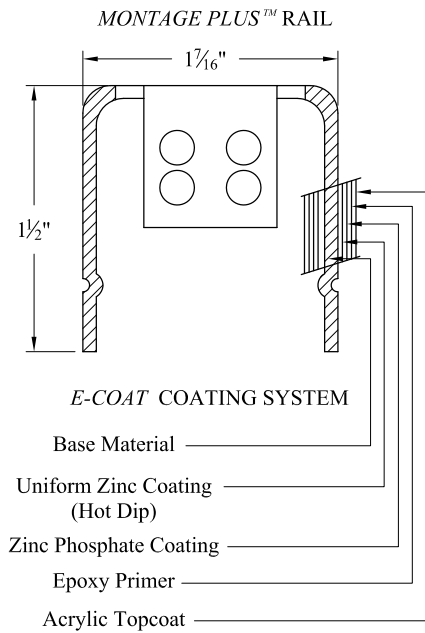
RAKING DIRECTIONAL ARROW

Welded panel can be raked 30" over 8' with arrow pointing down grade.

PROFUSION™ WELDING PROCESS

No exposed welds, Good Neighbor profile - Same appearance on both sides

MONTAGE PLUS™ RAIL
Specially formed high strength architectural shape.



**COMMERCIAL STRENGTH WELDED STEEL PANEL
PRE-ASSEMBLED**

Values shown are nominal and not to be used for installation purposes. See product specification for installation requirements.

IRMISO

Title: MONTAGE PLUS MAJESTIC 2/3-RAIL			
DR: CI	SH . 1 of 1	SCALE: DO NOT SCALE	
CK: ME	Date 6/28/10	REV: e	



AMERISTAR®

1555 N. Mingo
Tulsa, OK 74116
1-888-333-3422
www.ameristarfence.com



1 FLOOR PLAN
1/4"=1'-0"

GENERAL NOTES

- A. DO NOT SCALE DRAWINGS.
- B. THE BUILDING IS TO BE CONSTRUCTED IN COMPLIANCE WITH ASHRAE 90.1 OR PER THE LOCAL ENERGY CODE REQUIREMENTS.
- C. IT IS THE RESPONSIBILITY OF THE GENERAL CONTRACTOR TO CROSS-CHECK THE MEP DRAWINGS WITH THE ARCHITECTURAL DRAWINGS PRIOR TO THE ORDERING / INSTALLATION OF MECHANICAL, ELECTRICAL, AND PLUMBING WORK. ANY DISCREPANCIES BETWEEN THE ARCHITECTURAL AND MEP DRAWINGS SHALL BE BROUGHT TO THE ARCHITECTS ATTENTION FOR IMMEDIATE CLARIFICATION.
- D. COORDINATE WORK WITH OTHER TRADES. EQUIPMENT FURNISHED BY OTHERS, REQUIREMENTS OF THE TENANT AND LANDLORD/BUILDING OWNER, AND THE CONSTRAINTS OF THE EXISTING CONDITIONS OF THE PROJECT SITE. COORDINATE THE INSTALLATION WITH OTHER TRADES AS REQUIRED TO ENSURE A NEAT AND ORDERLY INSTALLATION. NOTIFY ARCHITECT/ENGINEER OF ANY DISCREPANCIES BEFORE STARTING WORK.
- E. GENERAL CONTRACTOR AND SUB-CONTRACTORS SHALL CAREFULLY REVIEW THE CONSTRUCTION DOCUMENTS. INFORMATION REGARDING THE COMPLETE WORK IS DISPERSED THROUGHOUT THE DOCUMENT SET AND CANNOT BE ACCURATELY DETERMINED WITHOUT REFERENCE TO THE COMPLETE DOCUMENT SET.
- F. WHERE THERE MAY BE A CONFLICT IN THE SPECIFICATIONS AND/OR DRAWINGS, THEN THE MORE EXPENSIVE LABOR, MATERIALS AND EQUIPMENT SHALL BE ASSUMED TO BE REQUIRED AND SHALL BE PROVIDED BY THE GENERAL CONTRACTOR TO THE SATISFACTION OF THE TENANT.
- G. WHEN WORK, NOT SPECIFICALLY CALLED OUT, IS REQUIRED TO COMPLETE THE PROJECT, IT SHALL BE PROVIDED BY THE GENERAL CONTRACTOR WITH THE BEST MATERIALS AND WORKMANSHIP.
- H. G.C. TO REPLACE ALL CARPET WHERE DEMOLITION OCCURS TO MATCH EXISTING TO REMAIN.

PLAN KEYNOTES

1. NEW SMALL "POPPY" CHAIRS (2) WITH OCCASIONAL TABLE (1) BY OTHERS. G.C. TO COORDINATE PLACEMENT WITH PNC.
2. BENCH SEATING SET (TYP. OF 1) BY OTHERS. G.C. TO COORDINATE PLACEMENT WITH PNC.
3. WELCOME DESK BY OTHERS. G.C. TO COORDINATE PLACEMENT WITH PNC.
4. CEILING CLOUD ELEMENTS. SEE REFLECTED CEILING PLAN ON SHEET A-110.
5. NEW FREE-STANDING, WALK-UP ATM. G.C. TO COORDINATE PLACEMENT OF ATM AND ATM MARKETING SURROUND WITH PNC.
6. ICI MACHINE AND MOBILE CART TO BE PROVIDED BY PNC.
7. SHRED BIN. G.C. TO COORDINATE PLACEMENT WITH PNC.
8. MFD PRINTER TO BE PROVIDED BY PNC.
9. MICR PRINTER PROVIDED BY PNC.
10. CASH SAFE. G.C. TO COORDINATE PLACEMENT WITH PNC.
11. HEAVY-DUTY OPEN SHELVING. G.C. TO COORDINATE PLACEMENT WITH PNC AND VENDOR.
12. MOBILE PEDESTAL BY OTHERS. G.C. TO COORDINATE PLACEMENT WITH PNC AND VENDOR.
13. 30" WIDE FILE (2 HIGH). COORDINATE PLACEMENT WITH PNC.
14. 42" WIDE FILE (5 HIGH). COORDINATE PLACEMENT WITH PNC.
15. 43" MONITOR WITH RECESSED MOUNTING ASSEMBLY. REFER TO INTERIOR ELEVATIONS.
16. 55" MONITOR WITH RECESSED MOUNTING ASSEMBLY. REFER TO INTERIOR ELEVATIONS.
17. 98" MONITOR IN WOOD FEATURE WALL MONITOR WITH RECESSED MOUNTING ASSEMBLY. REFER TO INTERIOR ELEVATIONS.
18. "WELCOME" SIGN. SEE INTERIOR ELEVATIONS.
19. BASE CABINETRY. COORDINATE WITH PNC AND VENDOR. REFER TO INTERIOR ELEVATIONS.
20. WALL CABINETRY. COORDINATE WITH PNC AND VENDOR. REFER TO INTERIOR ELEVATIONS.
21. COUNTERTOP WITH SUPPORT BRACKETS. BRACKETS TO BE PAINTED TO MATCH ADJACENT WALL. SEE SHEETS 1-501.
22. 18" STEEL UNDER-COUNTER PEDESTALS. G.C. TO COORDINATE PLACEMENT WITH PNC AND VENDOR.
23. GRAY ABSTRACT WALL COVERING, PROVIDED BY PNC AND INSTALLED BY G.C. TO INSURE AREA TO RECEIVE WALL COVERING HAS A LEVEL 5 FINISH. REFER TO INTERIOR ELEVATIONS.
24. ENHANCED PRIVACY POWERLINK OFFICE VINYL TO BE INSTALLED OVER GLAZING. PROVIDED BY PNC AND INSTALLED BY PNC. REFER TO INTERIOR ELEVATIONS.
25. GRAY ACCENT PAINT. SEE INTERIOR ELEVATIONS.
26. TOP HANGING 24" X 48" TWO-SIDED LIGHT BOX PROVIDED BY PNC AND INSTALLED BY G.C. REFER TO ELECTRICAL DRAWINGS.
27. OFFICE FRONT INTERIOR SAFETY GLAZING SYSTEM AND DOORS SUPPLIED AND INSTALLED BY OTHERS.
28. FURNITURE. PROVIDED BY PNC AND VENDOR. INSTALLED BY G.C. G.C. TO COORDINATE PLACEMENT WITH PNC.

LEGEND

- GRAY ABSTRACT WALL COVERING
- ORANGE TYPO WALL COVERING
- - - ENHANCED PRIVACY POWERLINK OFFICE VINYL
- PNC ACCENT PAINT, SHERWIN WILLIAMS, SW 2137, SEA HAZE
- ADJACENT TENANT, NO WORK IN THIS AREA.

REV.	DATE	DESCRIPTION

PNC BANK - BOYLSTON
731 BOYLSTON STREET
BOSTON, MA 02116

FLOOR PLAN

ISSUED FOR:	
PERMIT	10/02/19
BID	-
CONSTRUCTION	-
RECORD	-

PROJECT MANAGER	DESIGNER
MAR	EBC2

JOB NO.
2019190.07

A-101

1

2

3

4

5

GENERAL DEMOLITION NOTES

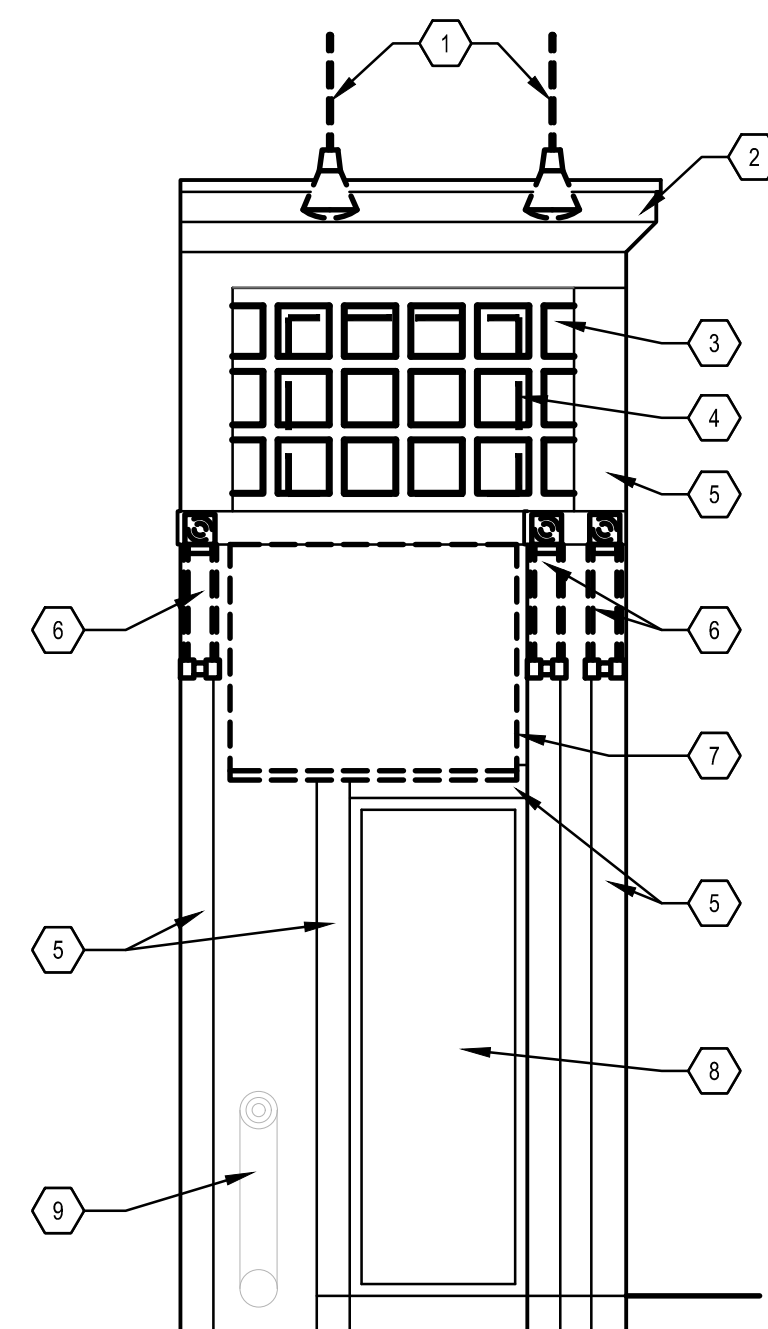
- A. ALL DEMOLITION WORK AND DISPOSAL SHALL BE DONE IN ACCORDANCE WITH LOCAL AND REGIONAL CODES. CONTRACTOR SHALL BE RESPONSIBLE FOR ALL DEMOLITION PERMITS AND FEES.
- B. COMPLETELY REMOVE ITEMS TO BE DEMOLISHED LEAVING SURFACE CLEAN, SOLID, AND READY TO RECEIVE NEW MATERIALS SPECIFIED ELSEWHERE. ALL DEMOLISHED CONSTRUCTION WASTE SHALL BE RECYCLED. G.C. TO COORDINATE AND SHALL COMPLETELY REMOVE MATERIALS FROM THE JOB SITE.
- C. IN THE EVENT OF DEMOLITION OF ITEMS NOT SCHEDULED TO BE REMOVED, PROMPTLY REPLACE SUCH ITEMS TO THE APPROVAL OF THE ARCHITECT, AND AT NOT ADDITIONAL COST TO THE OWNER OR TENANT.
- D. PROVIDE PROTECTION FOR REMAINING FINISHES, GLAZING AND OTHER ITEMS FROM DAMAGE DUE TO NEW CONSTRUCTION WORK.

KEYNOTES

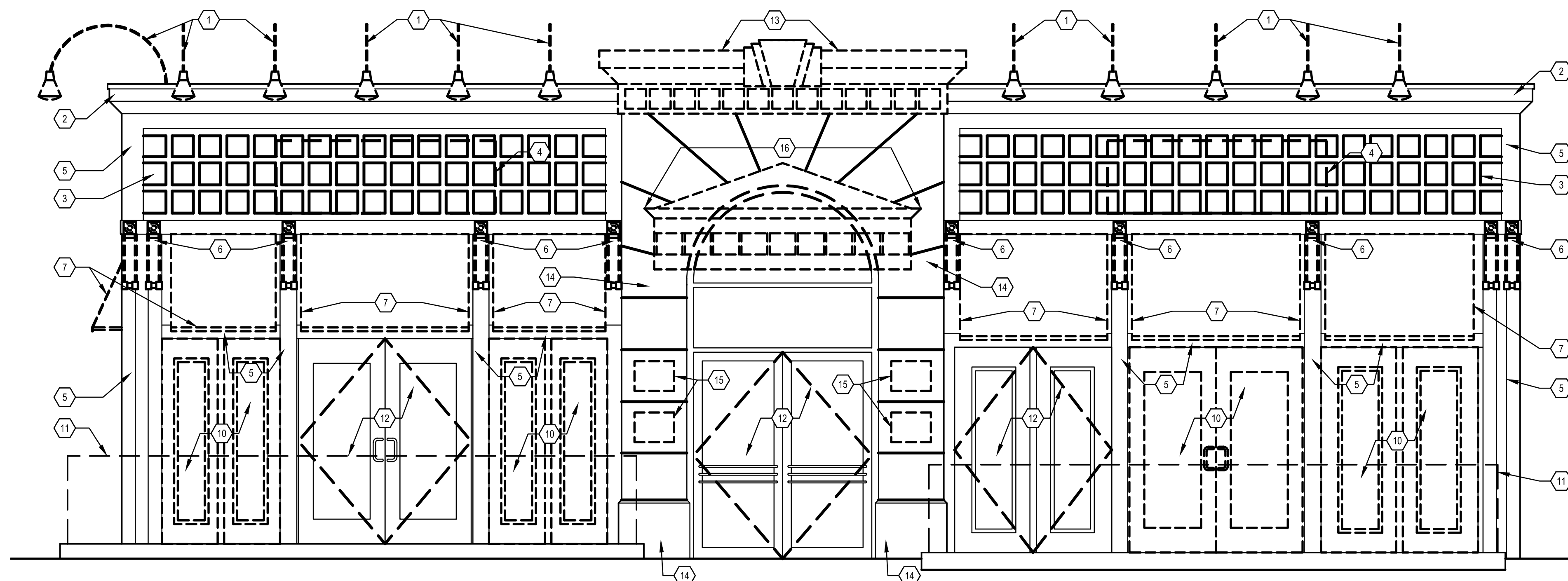
- 1. ALL EXISTING GOOSE NECK LIGHT FIXTURES AND ASSOCIATED WIRING TO BE REMOVED.
- 2. EXISTING PAINTED WOOD CORNICE TO REMAIN.
- 3. EXISTING PAINTED WOOD LATTICE TO REMAIN.
- 4. DASHED LINES INDICATE EXISTING TENANT SIGNAGE TO BE REMOVED IN ITS ENTIRETY.
- 5. EXISTING PAINTED WOOD TRIM TO REMAIN.
- 6. EXISTING PAINTED WOOD TRIM CAP TO BE REMOVED IN ITS ENTIRETY.
- 7. REMOVE EXISTING FABRIC AWNING AND METAL FRAME IN ITS ENTIRETY.
- 8. EXISTING WINDOW TO REMAIN. PROTECT DURING DEMOLITION AND CONSTRUCTION.
- 9. EXISTING FIRE DEPARTMENT CONNECTION TO REMAIN.
- 10. EXISTING DOOR, FRAME AND HARDWARE TO BE REMOVED IN ITS ENTIRETY. PREPARE FOR NEW STOREFRONT INSTALLATION.
- 11. DASHED LINE EXISTING RAILING SYSTEM TO REMAIN. MODIFY PER FLOOR PLAN.
- 12. EXISTING STOREFRONT DOORS TO REMAIN. PROTECT DURING DEMOLITION AND CONSTRUCTION.
- 13. REMOVE EXISTING PAINTED WOOD CORNICE AS SHOWN.
- 14. EXISTING STONE VENEER TO REMAIN. PROTECT DURING DEMOLITION AND CONSTRUCTION.
- 15. EXISTING PLAQUES TO BE REMOVED AND SAVED FOR REINSTALLATION ON NEW FACADE.
- 16. EXISTING METAL AND GLASS AWNING TO BE REMOVED IN ITS ENTIRETY. PATCH ANY HOLES IN STONE FACADE.



520 South Main Street, Suite 2531
Akron, OH 44311
Phone: 330.572.2100 Fax: 330.572.2101



1 DEMOLITION EXTERIOR ELEVATION - SIDE
D-300 SCALE: 3/8"=1'-0"



1 DEMOLITION EXTERIOR ELEVATION - FRONT
D-300 SCALE: 3/8"=1'-0"

REV.	DATE	DESCRIPTION

PNC BANK - BOYLSTON
729 BOYLSTON STREET
BOSTON, MA 02116

DEMOLITION
EXTERIOR ELEVATIONS

ISSUED FOR:	
PERMIT	-
BID	-
CONSTRUCTION	-
RECORD	-

PROJECT MANAGER	DESIGNER
MAR	EBC2

JOB NO.
2019190.07

D-300