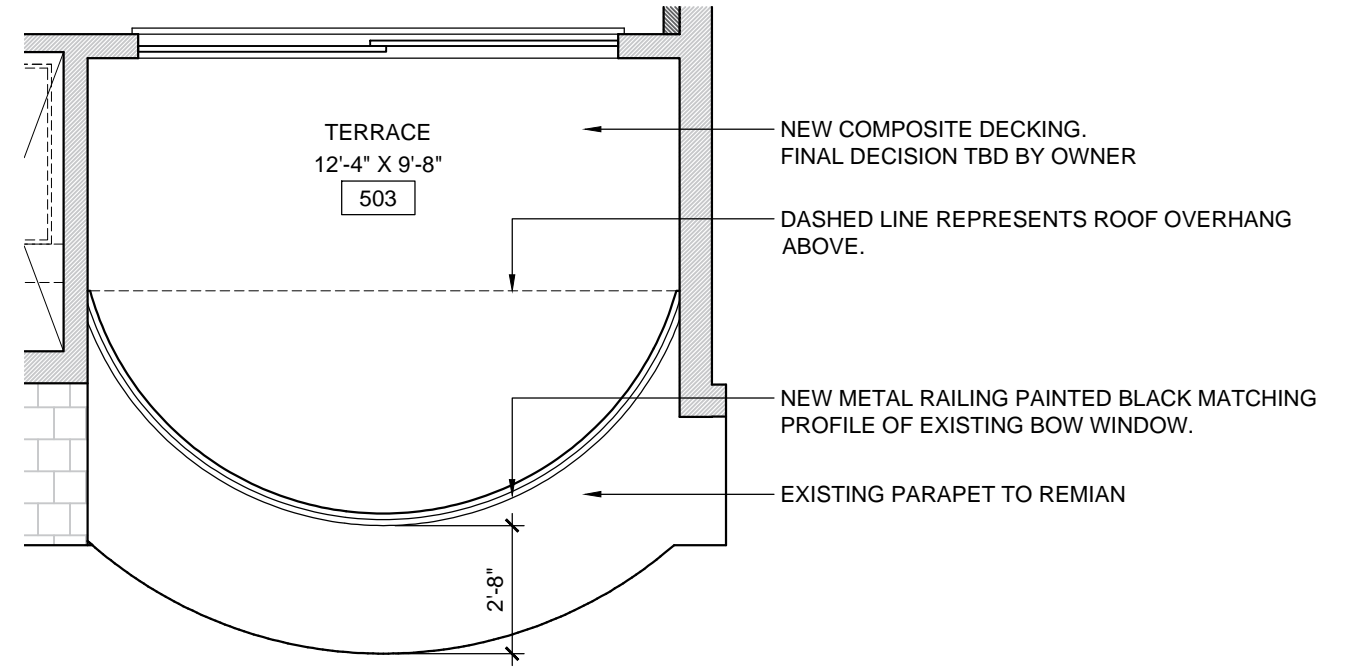


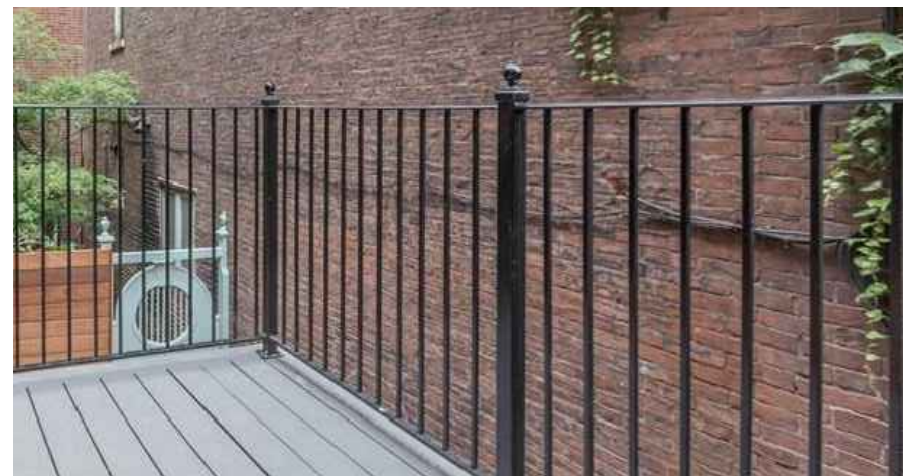


1 EXTERIOR IMAGE OF TERRACE FROM STREET
1/2" = 1'-0"

LOCATION OF PROPOSED METAL RAILING. RAILING WILL BE LOCATED 2'-8" +/- FROM EXISTING PARAPET LINE AS WELL AS MATCH THE EXISTING PROFILE OF THE BOW WINDOW.



2 TERRACE PLAN
1/2" = 1'-0"

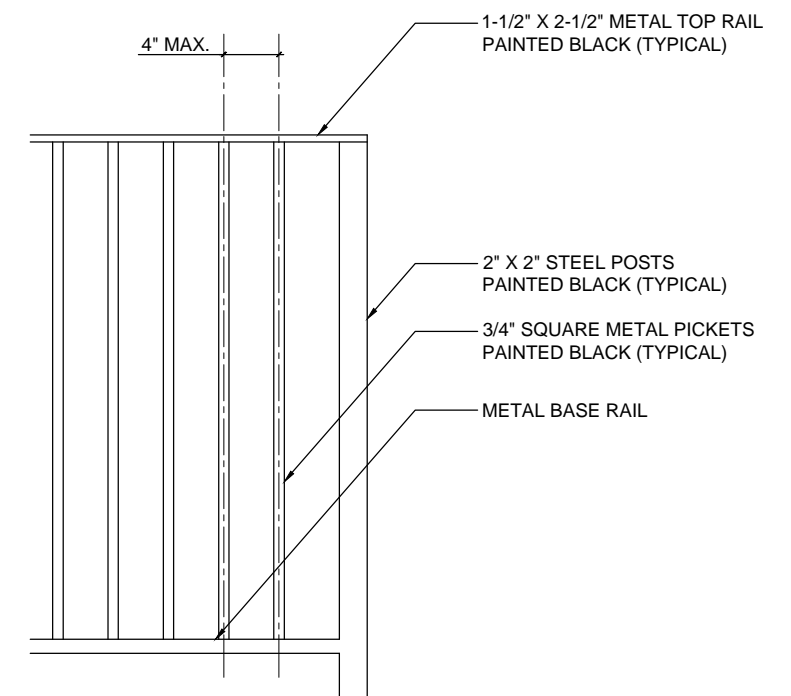


3 PROPOSED RAILING DESIGN
1/2" = 1'-0"



3 LOCATION OF RAILING
1/2" = 1'-0"

PROPOSED 42" INCH RAILING WILL BE MEASURED FROM FINISH OF TERRACE



4 RAILING DETAIL
1/2" = 1'-0"