

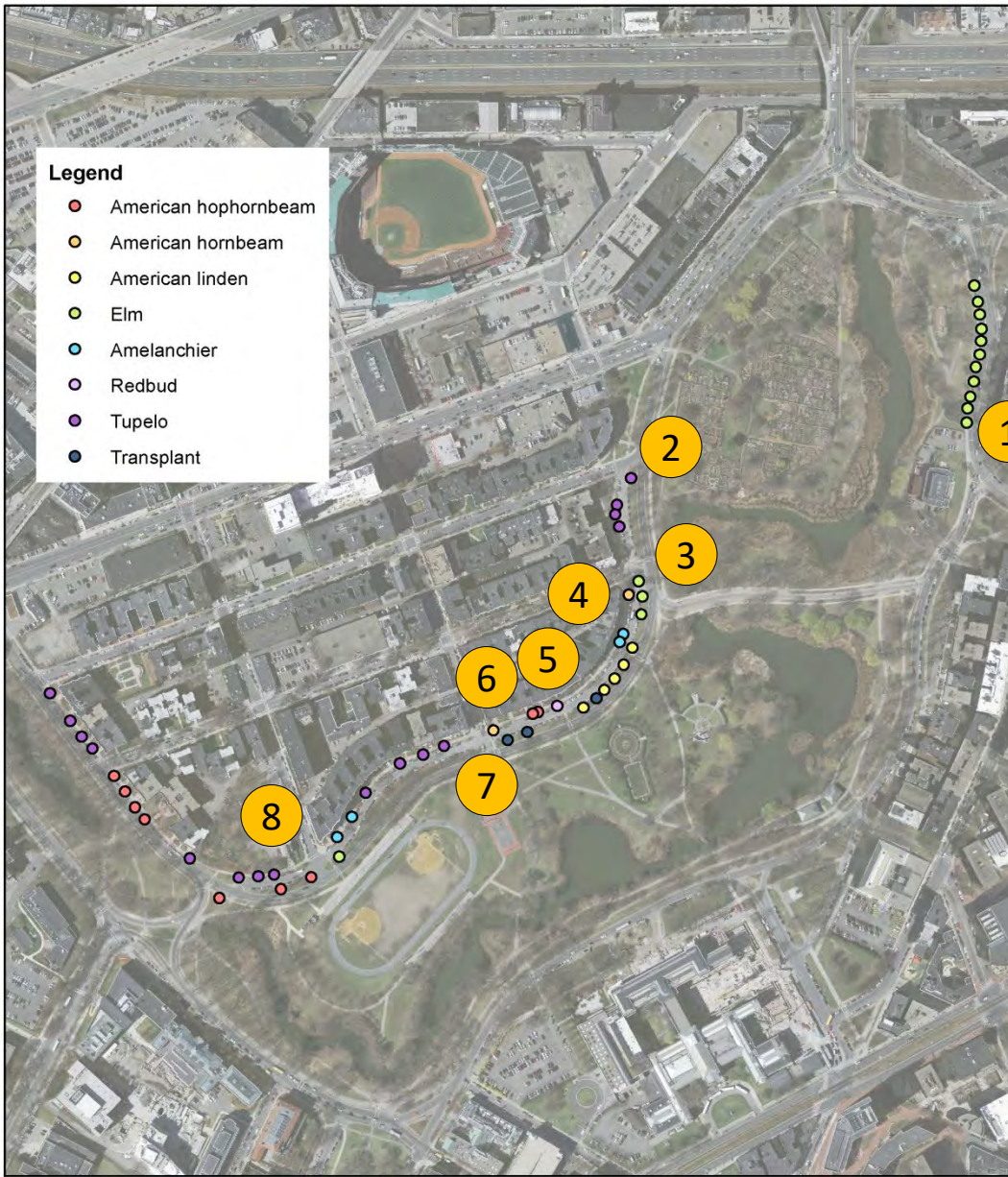
DCR Tree Planting 2020

Fenway & Park Drive, Boston

BOSTON LANDMARKS COMMISSION
PUBLIC HEARING
March 24, 2020



Proposed Planting Plan



DCR Street Tree Planting - Park Drive and Fenway

DCR Street Planting - Emerald Necklace, Park Drive and Fenway Plant List

3-Mar-20

Quantity	Genus	Species	Common Name	Size	Notes
4	Amelanchier	canadensis	Amelanchier	2-2.5" Caliper	Single-stem
9	Ostrya	virginiana	American Hophornbeam	2-2.5" Caliper	
2	Carpinus	caroliniana	American Hornbeam	2-2.5" Caliper	
5	Tilia	americana	American Linden	2-2.5" Caliper	
15	Ulmus	americana 'New Harmony'	New Harmony American Elm	2-2.5" Caliper	Dutch Elm Diseases Resistant
1	Cercis	canadensis 'Appalachian Red'	Appalachian Red Eastern Redbud	2-2.5" Caliper	Cold Hardy Variety
16	Nyssa	sylvatica	Tupelo	2-2.5" Caliper	

Muddy River

A. Brookline and Boston, 1892 and 1893.

Number on plan	Scientific name	Common name	Total no., Brookline	Total no., Boston
1*	<i>Quercus rubra</i>	Red oak	305	400
2*	<i>Quercus alba</i>	White oak	205	360
3	<i>Quercus coccinea</i>	Scarlet oak	19	25
4	<i>Quercus palustris</i>	Pin oak	12	16
5	<i>Quercus macrocarpa</i>	Bur oak	5	7
6	<i>Quercus bicolor</i>	Swamp white oak	5	7
7	<i>Quercus prinus</i>	Chestnut oak	12	16
8*	<i>Acer saccharum (saccharinum)</i>	Sugar maple	200	260
9	<i>Acer saccharinum (dasycarpum)</i>	Silver maple	30	40
10	<i>Acer rubrum</i>	Red maple	30	40
11	<i>Acer negundo</i>	Box elder	10	13
12*	<i>Ulmus americana</i>	American elm	136	175
14	<i>Ulmus thomasii (racemosa)</i>	Rock elm	5	7
17	<i>Sassafras albidum (officinale)</i>	Common sassafras	5	7
18	<i>Juniperus virginiana</i>	Eastern red cedar	10	13
19	<i>Taxus canadensis (ferruginea)</i>	American beth	36	50
21	<i>Nyssa sylvatica (multiiflora)</i>	Black tupelo	10	13
23	<i>Betula nigra</i>	River birch	18	24
24	<i>Betula lenta</i>	Sweet birch	5	7
25	<i>Betula lutea</i>	Yellow birch	10	13
27	<i>Betula papyrifera</i>	Paper birch	5	7
28	<i>Celtis occidentalis</i>	Hackberry	5	7
29	<i>Fraxinus americana</i>	White ash	13	20
30	<i>Liriodendron tulipifera</i>	Tulip tree	10	13
31j	<i>Magnolia acuminata</i>	Cucumber tree	10	13
33	<i>Platanus orientalis</i>	Oriental plane tree	10	13
36	<i>Populus deltoides (monilifera)</i>	Eastern cottonwood	5	7
37i	<i>Populus nigra italica (P. nigra pyramidalis)</i>	Lombardy poplar	15	20
38	<i>Salix alba vitellina</i>	Yellowstem willow	10	13
39	<i>Salix alba sericea (S. alba argentea)</i>	?	13	13
40	<i>Salix alba f. chermesina (S. alba britzensis)</i>	Redstem willow	12	?
41	<i>Salix babylonica</i>	Babylon weeping willow	12	16
42	<i>Tilia americana</i>	American basswood	5	7
43	<i>Ostrya virginiana (virginica)</i>	American hophornbeam	10	13
46	<i>Carpinus caroliniana (americana)</i>	American hornbeam	5	7
60*	<i>Cornus florida</i>	Flowering dogwood	300	400
61*	<i>Cornus alternifolia</i>	Alternate-leaved dogwood	1,040	1,330
62*	<i>Cornus racemosa (paniculata)</i>	Gray dogwood	1,120	1,700
63	<i>Cornus sanguinea</i>	Bloodwing dogwood	603	800
64	<i>Cornus amomum (sericea)</i>	Silky dogwood	180	240
65	<i>Cornus sericea (stolonifera)</i>	Red stier dogwood	600	800

Zaitzevsky, Cynthia. *Frederick Law Olmsted and the Boston Park System*. Cambridge: 1982, The Belknap Press of Harvard University, page 216.



Massachusetts Urban & Community Forestry Program

SELECTING TREES FOR YOUR URBAN AND COMMUNITY FOREST

Large Trees: Consider these only in areas with adequate rooting space and without any overhead wires or other obstructions

Red maple	<i>Acer rubrum</i> (*, n, w)
Sugar maple	<i>Acer saccharum</i> (s, n)
Red horsechestnut	<i>Aesculus x carnea</i> (s)
River birch	<i>Betula nigra</i> (s, n)
Hackberry	<i>Celtis occidentalis</i> (*, n)
Katsura	<i>Cercidiphyllum japonicum</i>
Turkish filbert	<i>Corylus columa</i>
Ginkgo (male only)	<i>Ginkgo biloba</i> (*)
Honeylocust	<i>Gleditsia triacanthos</i>
	var. <i>inermis</i> (*) (thornless, fruitless)
Kentucky coffeetree	<i>Gymnocladus dioica</i> (m)
Sweetgum	<i>Liquidambar styraciflua</i> (m)
Tulip tree	<i>Liriodendron tulipifera</i>
Cucumber tree	<i>Magnolia acuminata</i>
Black gum	<i>Nyssa sylvatica</i> (n)
London planetree	<i>Platanus x acerifolia</i> (w)
Sawtooth oak	<i>Quercus acutissima</i>
Scarlet oak	<i>Quercus coccinea</i> (n)
Pin oak	<i>Quercus palustris</i> (n)
Red oak	<i>Quercus rubra</i> (n)
English oak	<i>Quercus robur</i>
Japanese pagoda tree	<i>Styphnolobium japonicum</i> (*)
Korean mountain ash	<i>Sorbus alnifolia</i>
Bald cypress	<i>Taxodium distichum</i>
Silver linden	<i>Tilia tomentosa</i>
Little-leaf linden	<i>Tilia cordata</i> (*)
American elm	<i>Ulmus americana</i> (n, m)
Cultivars include 'Homestead', 'Princeton', 'Valley Forge'	

Medium Trees: (Plant near power lines or other obstructions WITH CAUTION)

Amur maackia	<i>Maackia amurensis</i>
American hornbeam	<i>Carpinus caroliniana</i> (n)
Yellowwood	<i>Cadastris kentuckeae</i> (syn. <i>C. lutea</i>)
Goldenrain tree	<i>Koeleruteria paniculata</i>
American hophornbeam	<i>Ostrya virginiana</i> (n)

Accolade cherry	<i>Prunus sargentii</i> 'Accolade'
Sargent cherry	<i>Prunus sargentii</i>
Kwanzan cherry	<i>Prunus serrulata</i> 'Kwanzan' (l)
Higan cherry	<i>Prunus subhirtella</i>

Small Trees: (Appropriate for planting near power lines or small spaces)

Hedge maple	<i>Acer campestre</i> (*)
Serviceberry	<i>Amelanchier</i> sp. (n)
Eastern redbud	<i>Cercis canadensis</i>
Fringetree	<i>Chionanthus virginicus</i>
Kousa dogwood	<i>Cornus kousa</i>
Cornelian cherry	<i>Cornus mas</i>
Washington hawthorn	<i>Crataegus phaenopyrum</i> (*)
Crabapple	<i>Malus</i> sp. (*)
Sweet bay magnolia	<i>Magnolia virginiana</i>

You might also consider planting additional fruit and nut species in open areas or park areas.

Invasive Trees (DO NOT PLANT) Illegal to import, propagate, or sell in Massachusetts. (Authorized under General Laws Chapter 12B)

Norway maple	<i>Acer platanoides</i>
Sycamore maple	<i>Acer pseudoplatanus</i>
Tree of heaven	<i>Ailanthus altissima</i>
Amur corktree	<i>Phellodendron amurense</i>
Black locust	<i>Robinia pseudoacacia</i>

Trees that have shown invasive tendencies (Plant with caution. Not recommended for planting where they may spread into natural areas)

Amur maple	<i>Acer ginnala</i> prohibited in CT and VT
Japanese tree lilac	<i>Syringa reticulata</i> * instances of naturalization in riparian areas in MA, NY, WI, and VT or escape from cultivation MN, NH

(Notes: m-maintenance issues, i-invasive, s-requires ample space, w-already widely planted, l-short longevity, n-native to Massachusetts, *hardy in stressed sites)

Bureau of Forestry
Urban & Community Forestry Program
Massachusetts Department of Conservation and Recreation
261 Causeway Street, Suite 600, Boston, MA 02114
www.mass.gov/dcr/urban-and-community-forestry

In Partnership with:
USDA Forest Service and
the Massachusetts Tree Wardens' &
Foresters' Association



The Massachusetts Department of Conservation and Recreation prohibits discrimination in employment on the basis of race, color, creed, religion, national origin, ethnicity, gender, gender identity or expression, age, sexual orientation, Vietnam Era Veteran status, or disability.



The Fenway 1

Ulmus americana 'Jefferson'
Jefferson American Elm

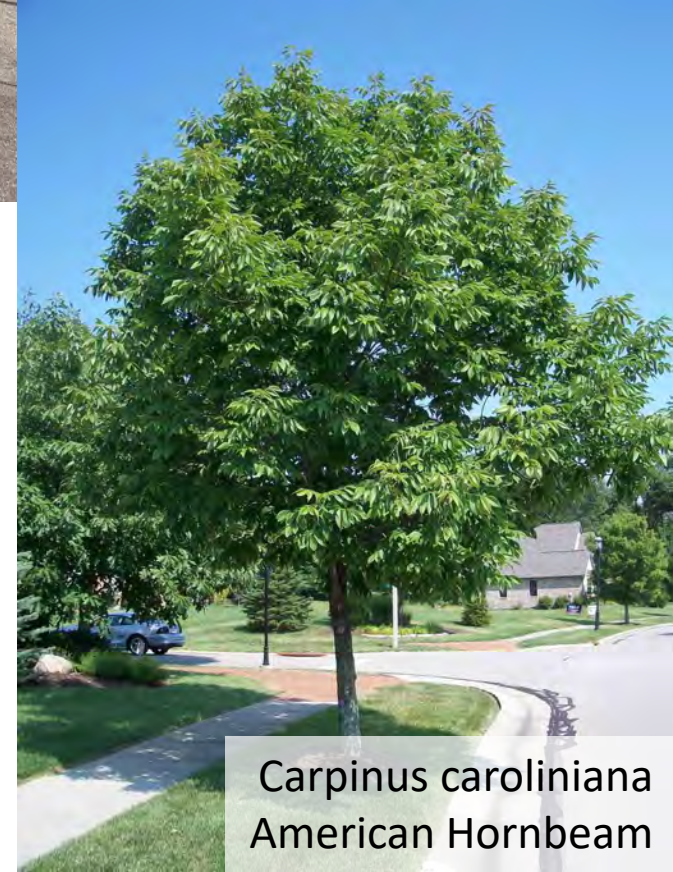


2 Park Drive at Peterborough Street

Nyssa sylvatica
Black Gum/ Tupelo



Ulmus americana 'Jefferson'
Jefferson American Elm



Carpinus caroliniana
American Hornbeam



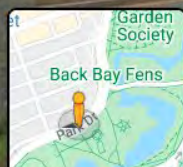
Tilia americana
American Linden



Amelanchier canadensis
Serviceberry

5

77 Park Drive



Google



Ostrya virginiana
American Hophornbeam



Cercis canadensis
Eastern Redbud



Nyssa sylvatica
Black Gum/ Tupelo



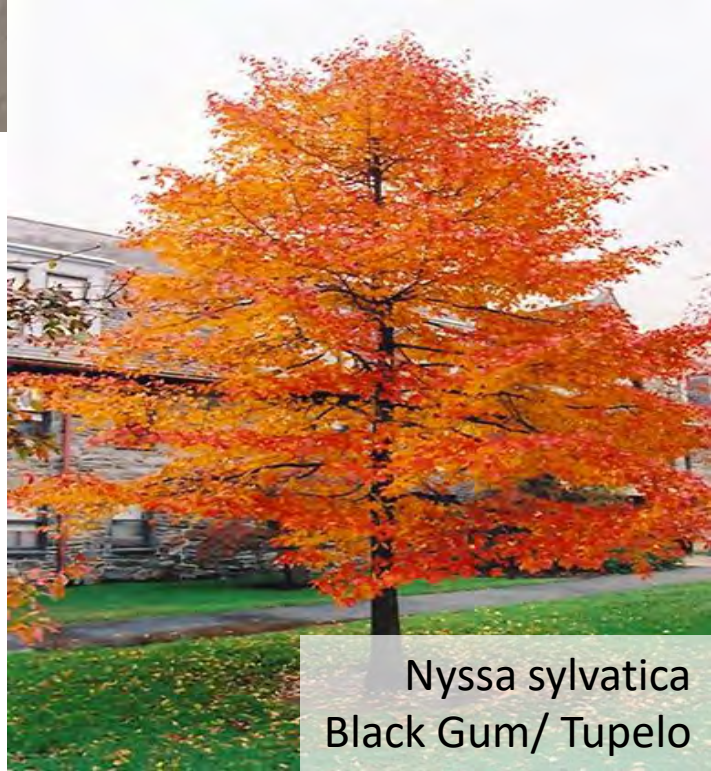
Carpinus caroliniana
American Hornbeam



Image capture: Sep 2018 © 2020 Google United States Terms



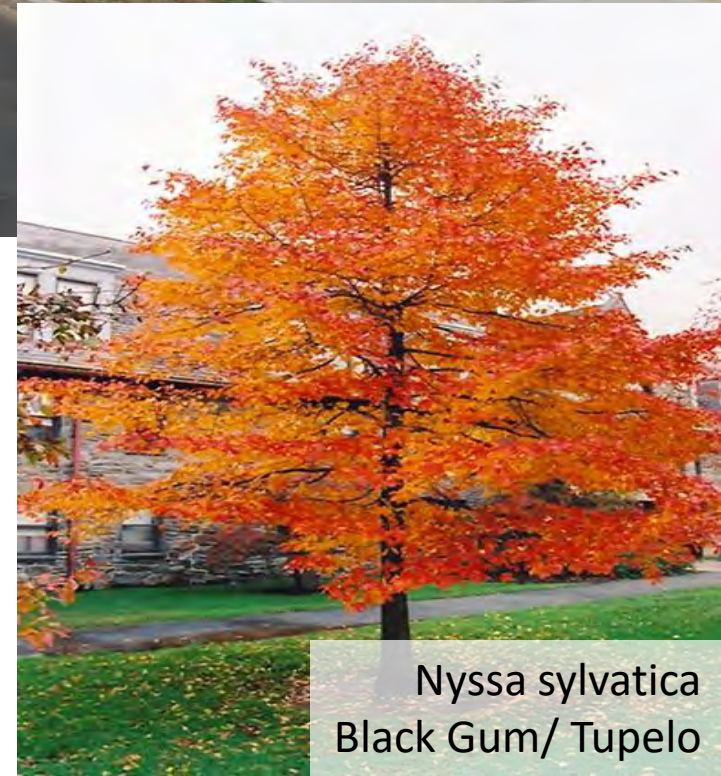
Ostrya virginiana
American Hophornbeam



Nyssa sylvatica
Black Gum/ Tupelo



Ostrya virginiana
American Hophornbeam



Nyssa sylvatica
Black Gum/ Tupelo

Thank you

