

# 126 MARLBOROUGH STREET BOSTON, MASSACHUSETTS



COMPOSITE OF SEVERAL PHOTOS TAKEN MARCH 2013, FROM BACKBAYHOUSES.ORG

BACK BAY ARCHITECTURAL COMMISSION  
03.17.2020

**ARCHITECTS**  
**CBT**  
110 Canal Street  
Boston, MA 02114  
p. 617 262 4354, f. 617 267 9667



3/17/2020 2:47:58 PM



FRONT



BACK

cbt

**EXISTING EXTERIOR PHOTOS**

126 MARLBOROUGH STREET BOSTON, MASSACHUSETTS  
03.17.2020





-  PARKING ENCLOSURE
-  EXISTING ROOF EXTENT
-  EXISTING HEADHOUSES

**SURROUNDING STRUCTURES**  
126 MARLBOROUGH STREET BOSTON, MASSACHUSETTS  
03.17.2020 1" = 1'-0"

3/17/2020 2:47:58 PM





EXISTING ROOF DECK - MECHANICAL



EXISTING ROOF DECK - SKYLIGHT



EXISTING ROOF DECK - HEADHOUSE

**EXISTING EXTERIOR ROOF DECK PHOTOS**  
126 MARLBOROUGH STREET BOSTON, MASSACHUSETTS  
03.17.2020

3/17/2020 2:48:01 PM

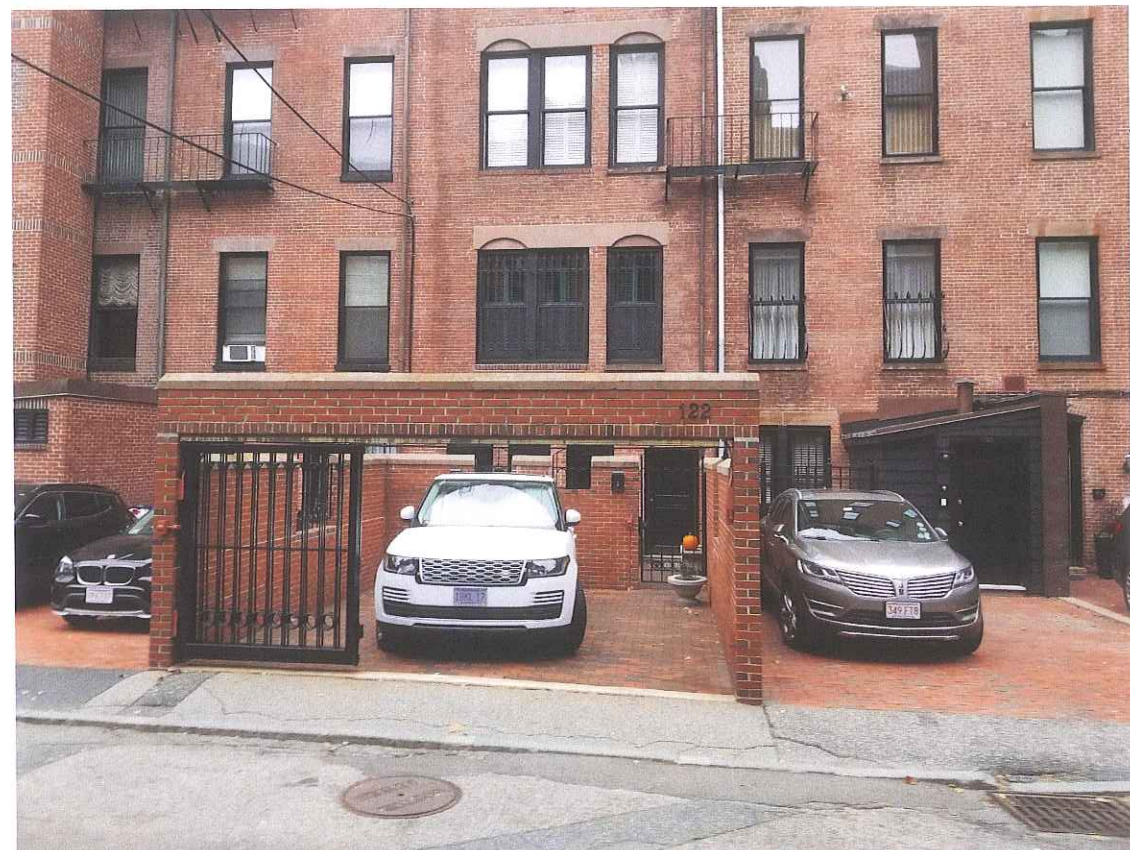




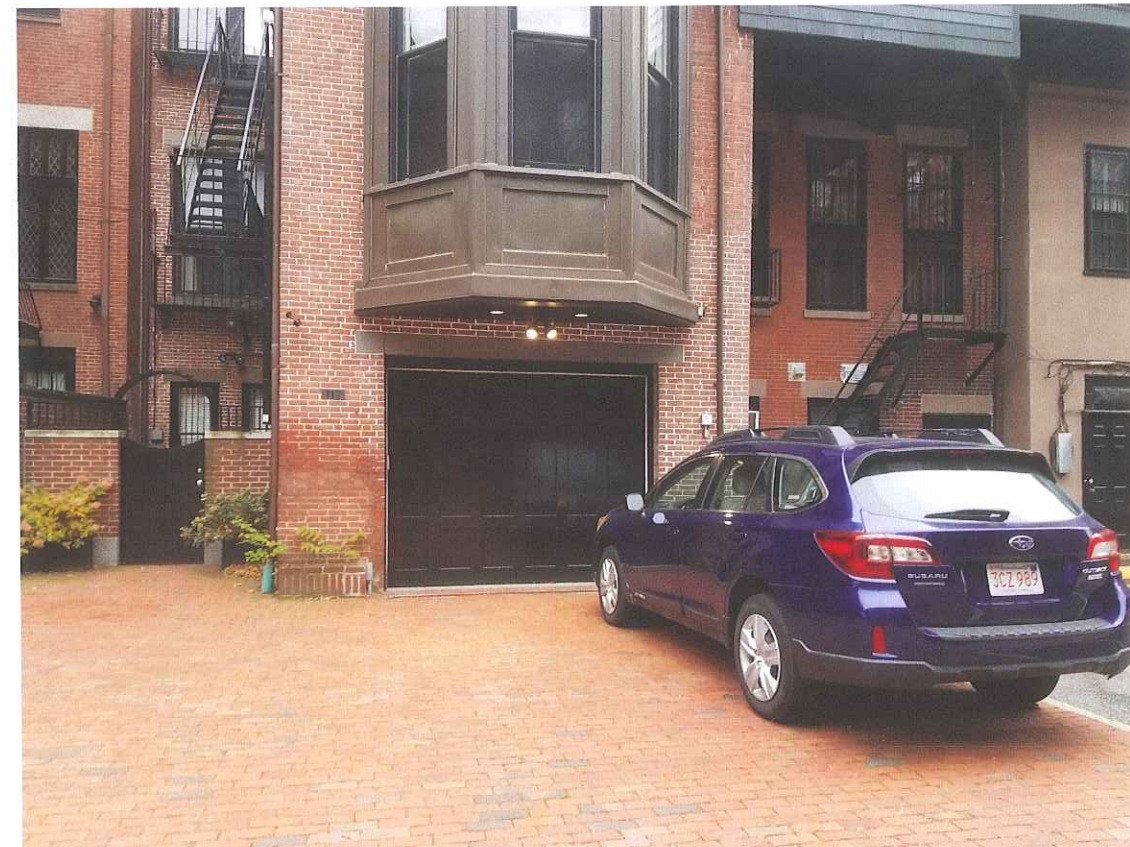
121 COMMONWEALTH AVENUE - PUBLIC ALLEY 424



138 MARLBOROUGH STREET - PUBLIC ALLEY 424



122 MARLBOROUGH STREET - PUBLIC ALLEY 424



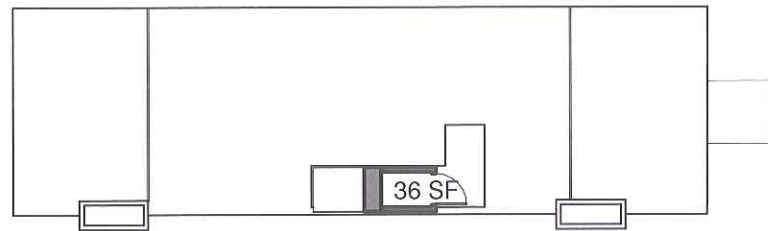
117 COMMONWEALTH AVENUE - PUBLIC ALLEY 424

### GARAGE PRECEDENTS

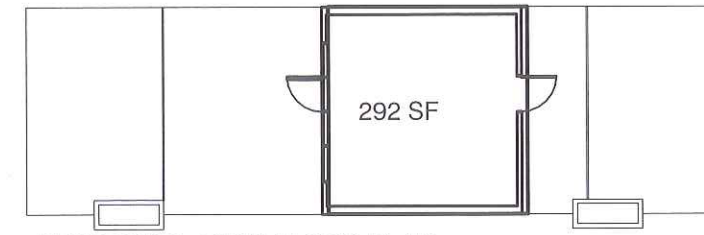
126 MARLBOROUGH STREET BOSTON, MASSACHUSETTS

03.17.2020

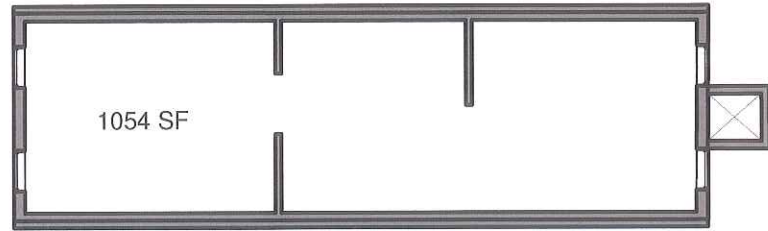




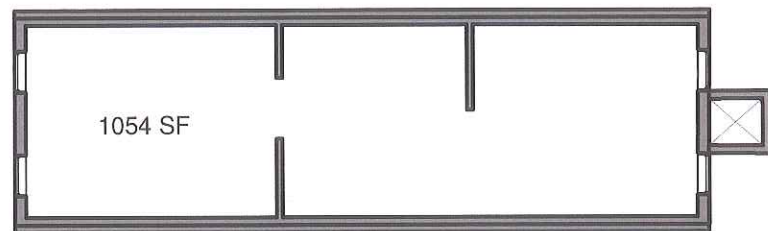
EXISTING - FIFTH FLOOR PLAN



PROPOSED - FIFTH FLOOR PLAN



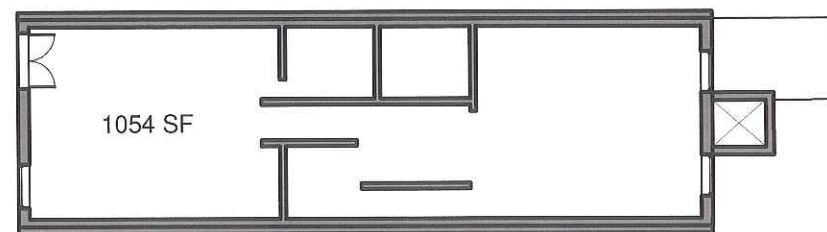
EXISTING - FOURTH FLOOR PLAN



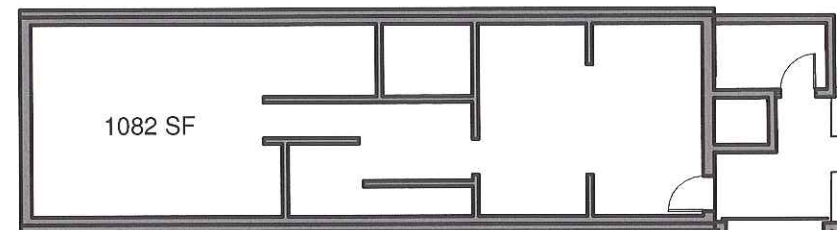
EXISTING - THIRD FLOOR PLAN



EXISTING - SECOND FLOOR PLAN



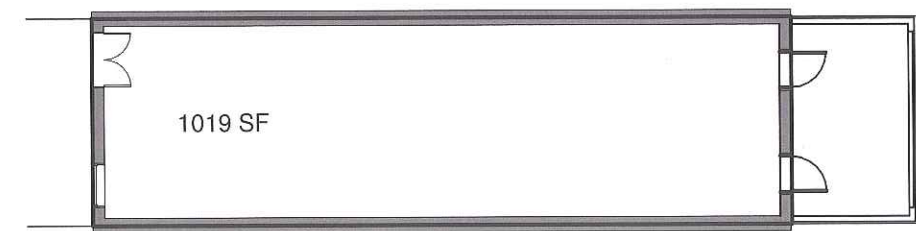
EXISTING - FIRST FLOOR PLAN



EXISTING - GARDEN FLOOR PLAN

ZONING INFORMATION  
 LOT SIZE: 1,977 SF  
 ALLOWED FAR: 3  
 EXISTING FAR: 2.71  
 PROPOSED FAR: 2.78  
 MAX ALLOWED: 5,931 SF

Level	Existing Area	Proposed Area
Garden	1082 SF	916 SF
Level 1	1054 SF	1054 SF
Level 2	1084 SF	1049 SF
Level 3	1054 SF	1019 SF
Level 4	1054 SF	1019 SF
Level 5	36 SF	292 SF
Total Area	5364 SF	5348 SF



PROPOSED - FIRST FLOOR PLAN



PROPOSED - GARDEN FLOOR PLAN

**FAR STUDY**

126 MARLBOROUGH STREET BOSTON, MASSACHUSETTS

03.17.2020 1/16" = 1'-0"



EXISTING

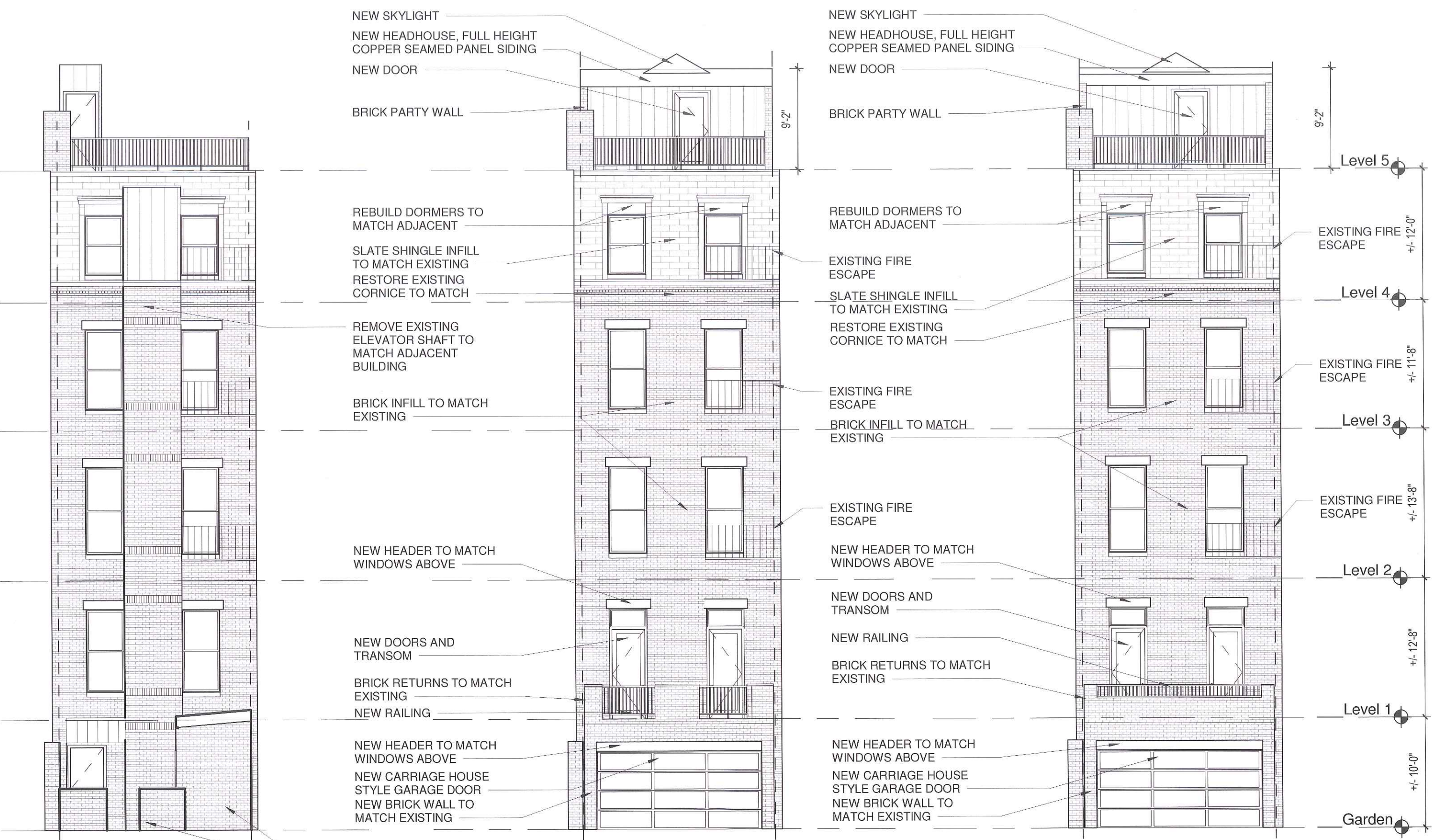


PROPOSED

**MARLBOROUGH BUILDING ELEVATIONS**  
 126 MARLBOROUGH STREET BOSTON, MASSACHUSETTS  
 03.17.2020 1/8" = 1'-0"



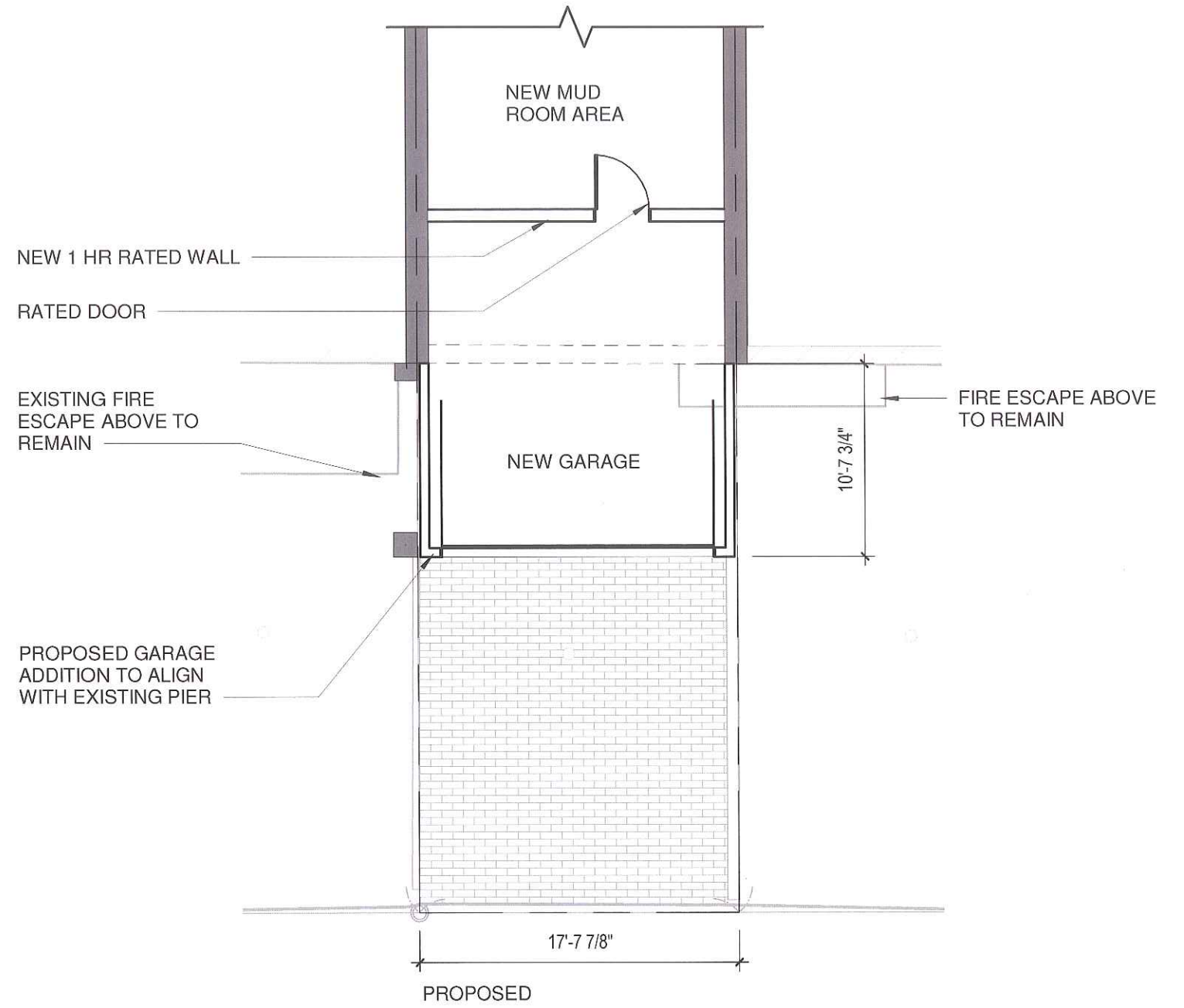
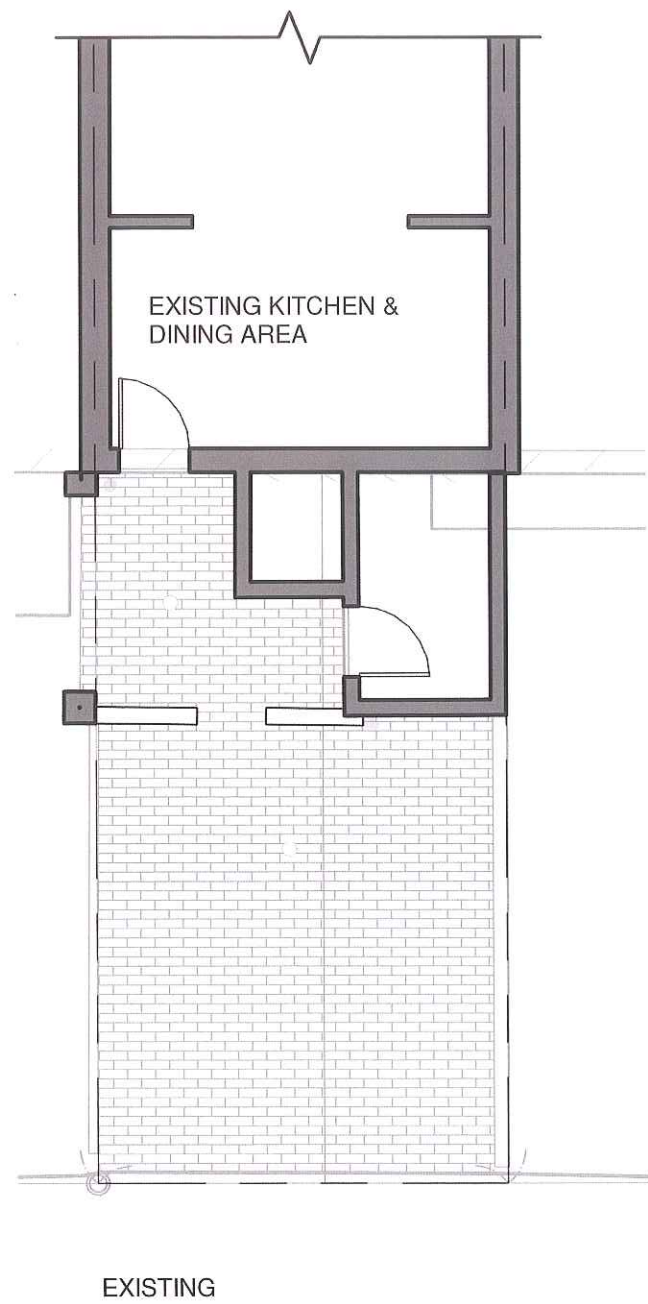
3/17/2020 2:48:05 PM



cbt

**ALLEY BUILDING ELEVATIONS**  
 126 MARLBOROUGH STREET BOSTON, MASSACHUSETTS  
 03.17.2020 1/8" = 1'-0"



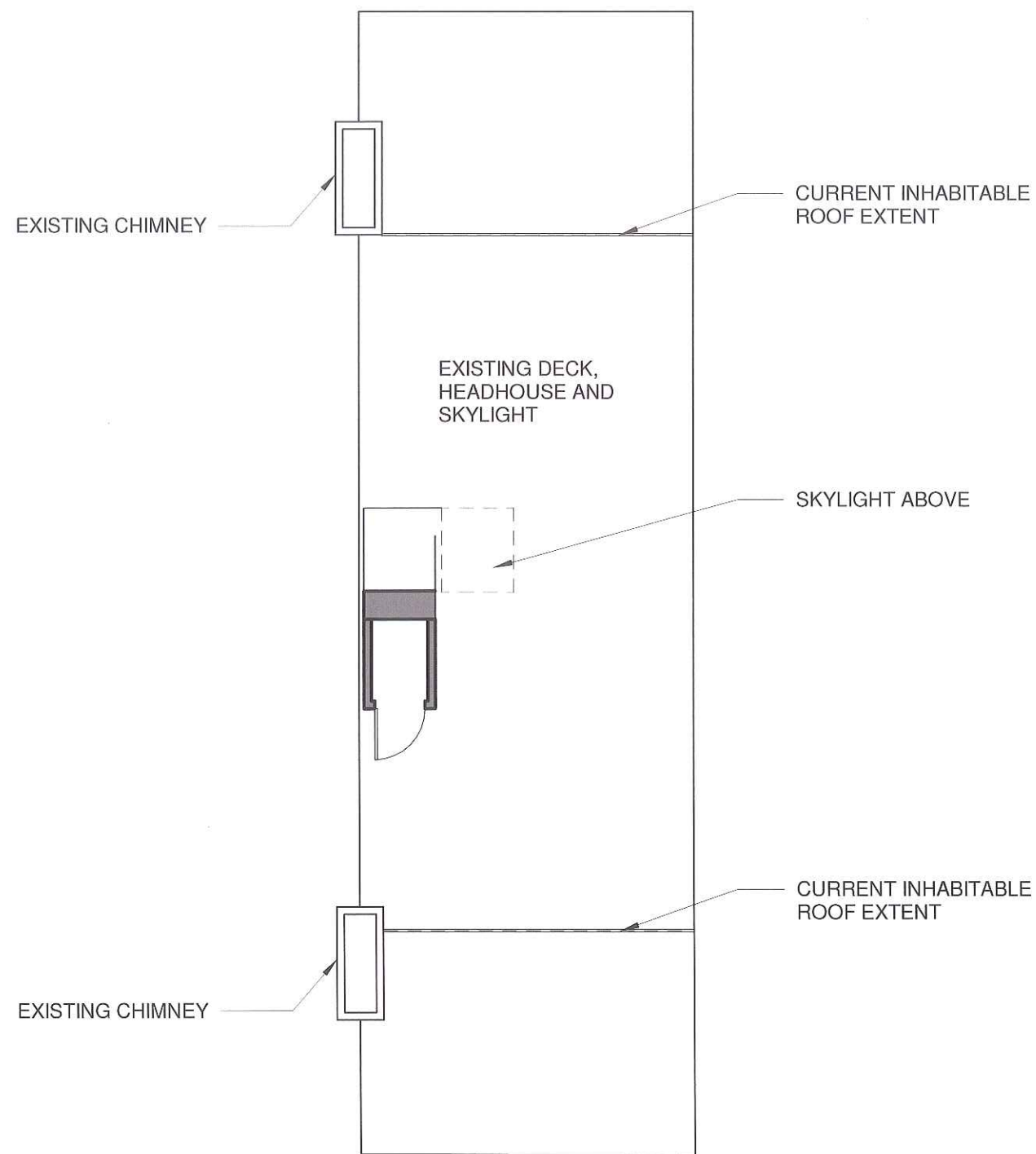


**GARDEN FLOOR PLANS**

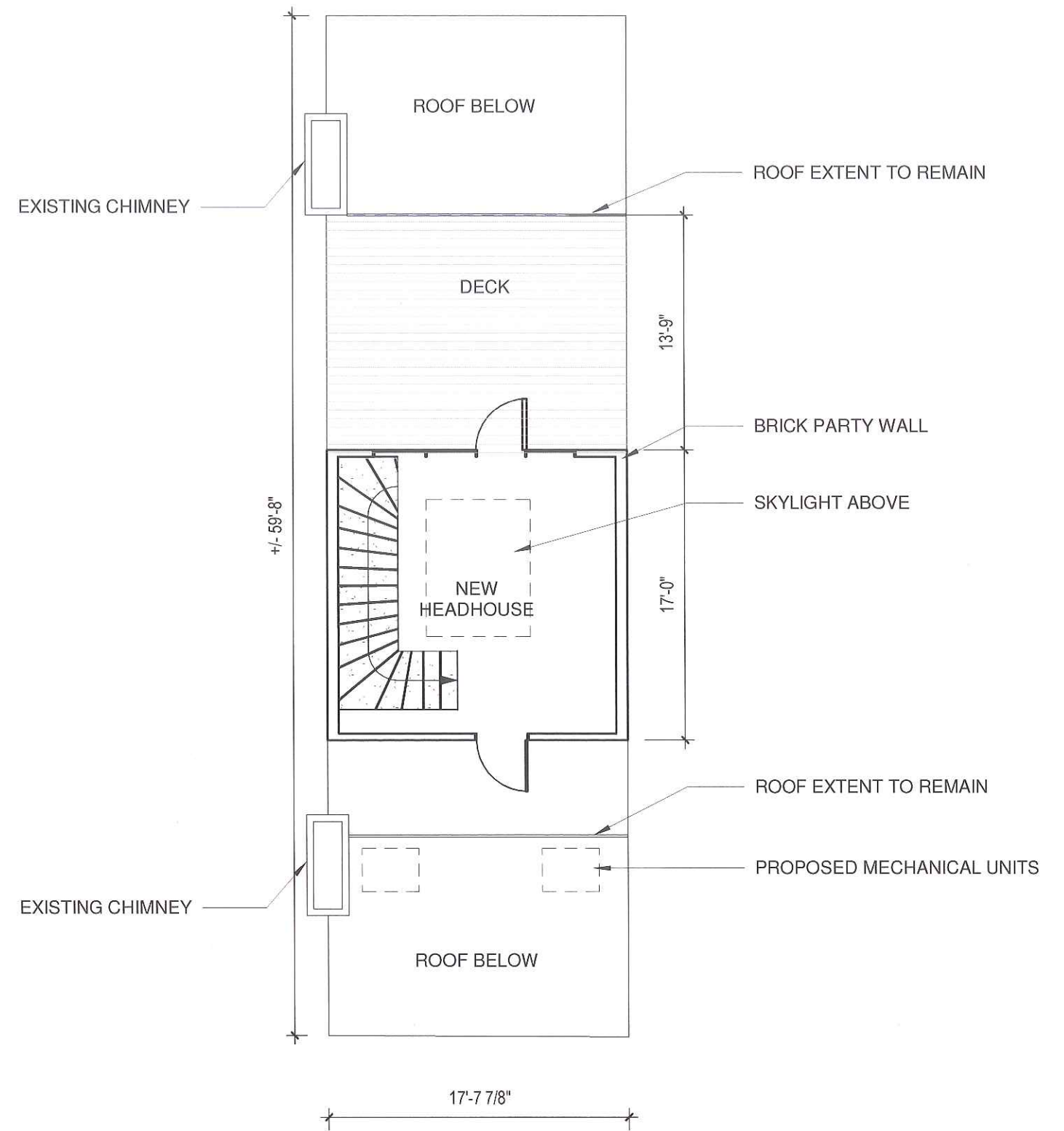
126 MARLBOROUGH STREET BOSTON, MASSACHUSETTS

03.17.2020 1/8" = 1'-0"





EXISTING



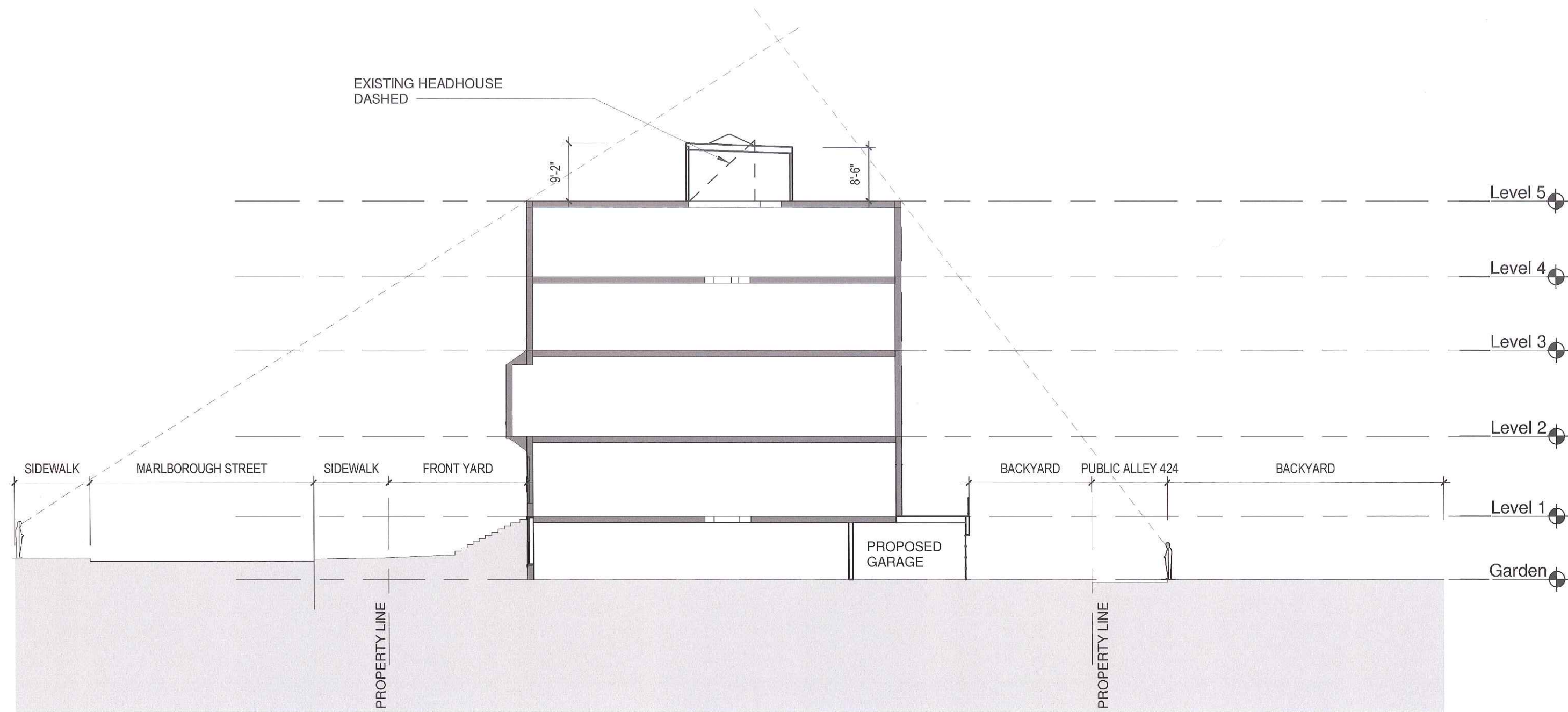
PROPOSED

**ROOF FLOOR PLAN**

126 MARLBOROUGH STREET BOSTON, MASSACHUSETTS

03.17.2020 1/8" = 1'-0"





3/17/2020 2:48:06 PM

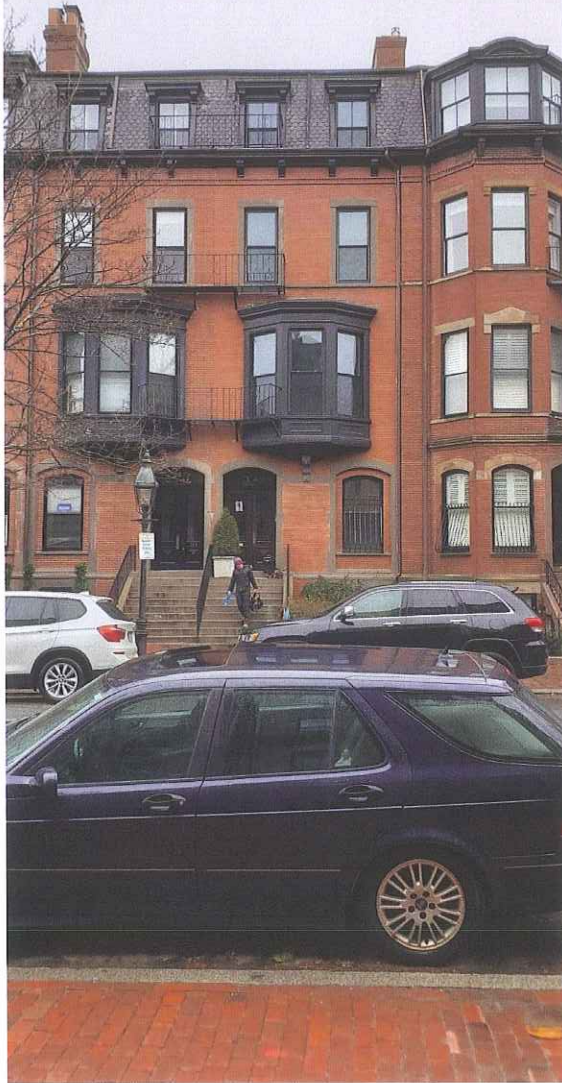


**LINE OF SIGHT DIAGRAM**  
 126 MARLBOROUGH STREET BOSTON, MASSACHUSETTS  
 03.17.2020 1/16" = 1'-0"





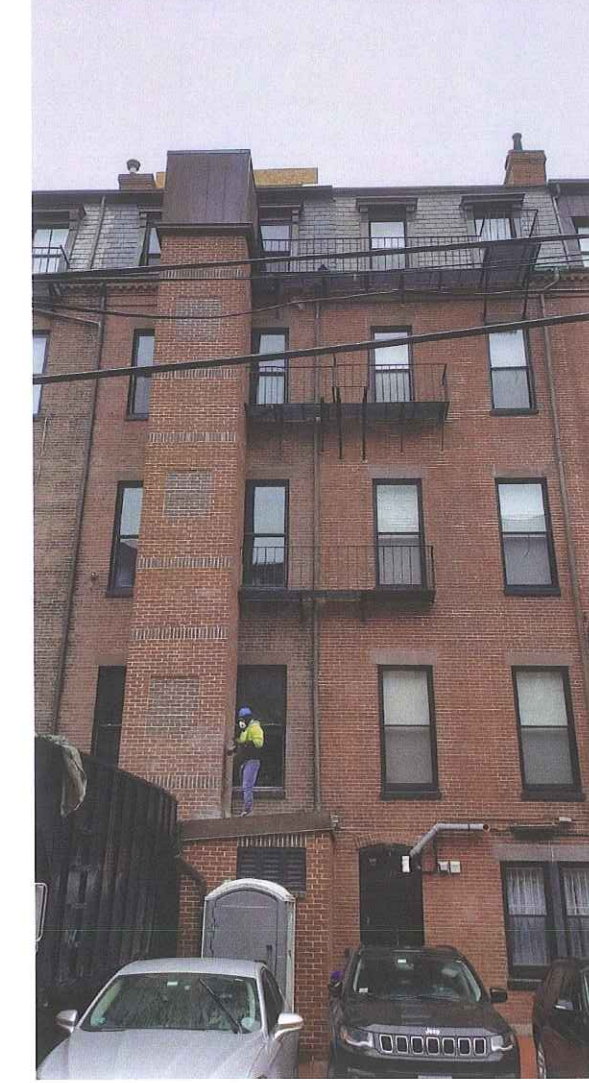
MARLBOROUGH STREET -  
SIDEWALK



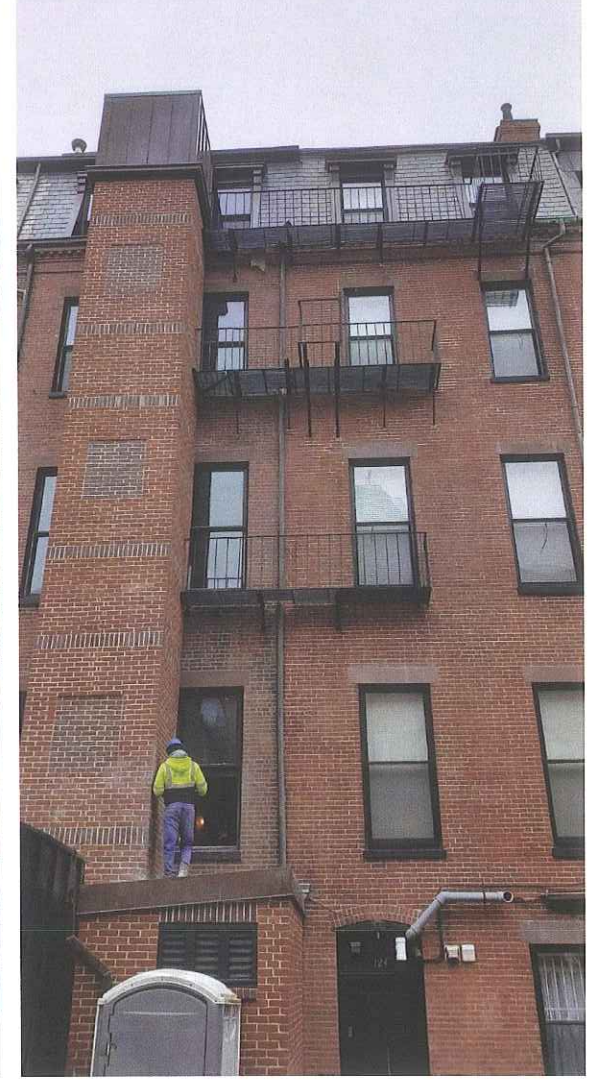
MARLBOROUGH STREET -  
NEIGHBORS ENTRYWAY



ALLEY 424 -  
PUBLIC WAY



ALLEY 424 -  
PUBLIC WAY



3/17/2020 2:48:06 PM

cbt

**MOCK UP**

126 MARLBOROUGH STREET BOSTON, MASSACHUSETTS

03.17.2020





# GSX13

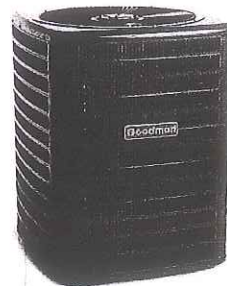
## SPLIT SYSTEM AIR CONDITIONER

### 13 SEER / 1 1/2 TO 5 TONS

COOLING CAPACITY: 18,000 - 60,000 BTU/h

**Contents**

- Nomenclature ..... 2
- Product Specifications ..... 3
- Expanded Cooling Data ..... 4
- AHRI Ratings ..... 22
- Dimensions ..... 39
- Wiring Diagrams ..... 40
- Accessories ..... 44



**Standard features**

- R-410A chlorine-free refrigerant
- Energy-efficient compressor
- Factory-installed filter drier
- Copper tube/aluminum fin coil
- Service valves with sweat connections and easy-access gauge ports
- Contactor with lug connection
- Ground lug connection
- AHRI Certified
- ETL Listed

**Cabinet features**

- Goodman® brand lowered sound control top design
- Steel louver coil guard
- Heavy-gauge galvanized steel cabinet
- Attractive Architectural Gray powder-paint finish with 500-hour salt-spray approval
- Top and side maintenance access
- Single-panel access to controls with space provided for field-installed accessories
- When properly anchored, meets the 2010 Florida Building Code unit integrity requirements for hurricane-type winds. (Anchor bracket kits available.)



SS-GSX13

www.goodmanmfg.com

3/14  
Supersedes 01/14

**PRODUCT SPECIFICATIONS**

**NOMENCLATURE**

G S X 13 036 1							
1	2	3	4,5	6,7,8	9	10	11
<b>Brand</b>							
G Goodman® Brand or Amana® Distinctions® Brand				Engineering * Minor Revision			
<b>Product Category</b>							
S Split System				Electrical			
				1 208-230 V, 1 Phase, 60 Hz			
				2 220/240 V, 1 Phase, 50 Hz			
				3 208-230 V, 3 Phase, 60 Hz			
				4 460 V, 3 Phase, 60 Hz			
				5 380-415 V, 3 Phase, 50 Hz			
<b>Unit Type</b>							
C Condenser R-22							
X Condenser R-410A							
H Heat Pump R-22							
Z Heat Pump R-410A							
<b>Efficiency</b>							
13 13 SEER				018 1 1/2 Tons 048 4 Tons			
14 14 SEER				024 2 Tons 060 5 Tons			
				030 2 1/2 Tons 090 7 1/2 Tons			
				036 3 Tons 120 10 Tons			
				042 3 1/2 Tons			
* Neither used for order entry or inventory management.							



www.goodmanmfg.com

SS-GSX13

**PRODUCT SPECIFICATIONS**

**SPECIFICATIONS**

	GSX13 0181E*	GSX13 0241D*	GSX13 0301B*	GSX13 0361C*	GSX13 0361E*	GSX13 0421B*	GSX13 0481B*	GSX13 0601B*	GSX13 0611A*
<b>CAPACITIES</b>									
Nominal Cooling (BTU/h)	18,000	24,000	30,000	36,000	36,000	42,000	48,000	60,000	60,000
SEER / EER	13 / 11	13 / 11	13 / 11	13 / 11	13 / 11	13 / 11	13 / 11	13 / 11	13 / 11
Decibels	75	75	73	74	74	75	76	77	72
<b>COMPRESSOR</b>									
RLA	6.7	13.5	12.8	14.1	14.1	17.9	19.9	25.0	26.4
IFA	41	58.3	64	77	77	112	109	134	134
<b>CONDENSER FAN MOTOR</b>									
Horsepower	1/8	1/8	1/8	1/6	1/4	1/4	1/4	1/4	1/4
FLA	0.7	0.7	0.7	1.1	1.5	1.5	1.5	1.5	1.5
<b>REFRIGERATION SYSTEM</b>									
Refrigerant Line Size <sup>1</sup>									
Liquid Line Size ("O.D.)	3/8"	3/8"	3/8"	3/8"	3/8"	3/8"	3/8"	3/8"	3/8"
Suction Line Size ("O.D.)	3/8"	3/8"	3/8"	3/8"	3/8"	3/8"	3/8"	3/8"	3/8"
Refrigerant Connection Size									
Liquid Valve Size ("O.D.)	3/8"	3/8"	3/8"	3/8"	3/8"	3/8"	3/8"	3/8"	3/8"
Suction Valve Size ("O.D.) <sup>1,2</sup>	3/8"	3/8"	3/8"	3/8"	3/8"	3/8"	3/8"	3/8"	3/8"
Valve Type	Sweat	Sweat	Sweat	Sweat	Sweat	Sweat	Sweat	Sweat	Sweat
Refrigerant Charge	73	76	78	89	75	90	104	111	130
Shipped with Oil/oz	0.051	0.057	0.061	0.070	0.070	0.076	0.080	0.086	0.096
<b>ELECTRICAL DATA</b>									
Voltage	208/230	208/230	208/230	208/230	208/230	208/230	208/230	208/230	208/230
Minimum Circuit Ampacity <sup>3</sup>	9.1	17.6	16.7	18.7	13.1	23.0	26.4	32.8	34.5
Max. Overcurrent Protection <sup>3</sup>	15 amps	30 amps	25 amps	30 amps	10 amps	40 amps	45 amps	50 amps	60 amps
Min / Max Volts	197/253	197/253	197/253	197/253	197/253	197/253	197/253	197/253	197/253
Electrical Conduit Size	3/4" or 1"	3/4" or 1"	3/4" or 1"	3/4" or 1"	3/4" or 1"	3/4" or 1"	3/4" or 1"	3/4" or 1"	3/4" or 1"
<b>EQUIPMENT WEIGHT (LBS)</b>									
102	115	115	139	118	171	175	184	211	233
117	128	132	157	135	189	193	202	233	

- <sup>1</sup> Line sizes denoted for 25' line sets, tested and rated in accordance with AHRI Standard 710/240. For other line-set lengths or sizes, refer to the Installation & Operating Instructions and/or the long-line-set guidelines.
- <sup>2</sup> Wire size should be determined in accordance with National Electrical Code; extensive wire runs will require larger wire sizes.
- <sup>3</sup> Must use time-delay fuses or HACR-type circuit breakers of the same size as noted.
- <sup>4</sup> Installer will need to supply 3/4" to 1" adapters for suction line connections.
- <sup>5</sup> Installer will need to supply 3/4" to 1 1/4" adapters for suction line connections.
- NOTES**
- Always check the S&R plate for electrical data on the unit being installed.
  - Unit is charged with refrigerant for 15' of 3/8" liquid line. System charge must be adjusted per Installation Instructions Final Charge Procedure.

SS-GSX13

www.goodmanmfg.com

3

**PRODUCT SPECIFICATIONS**

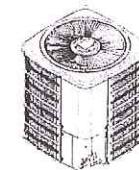
**AHRI RATINGS (CONT.)**

OUTDOOR UNIT	INDOOR UNITS		COOLING RATINGS				CFM	AHRI #
	COILS/AIR HANDLERS	FURNACES	TONNAGE	SEER <sup>1</sup>	EER <sup>1</sup>	CFM		
GSX13 0611A* (cont.)	CSCF4860ND*+TXV	A*VC5090S0XB*	55,000	37,600	13.50	11.00	1,475	5621124
	CSCF4860ND*+TXV	A*VC5091S0XB*	55,000	37,600	13.00	11.00	1,575	5621134
	CSCF4860ND*+TXV	G*VC3501S0XB*	55,000	37,600	13.00	11.00	1,575	5621134
	CSCF4860ND*+TXV	A*VC3511S0XB*	55,000	37,600	13.50	11.00	1,550	5621143
	CSCF4860ND*+TXV	A*VM66080S0XB*	55,500	38,000	13.00	11.00	1,460	5621152
	CSCF4860ND*+TXV	G*VM66080S0XB*	55,500	38,000	13.00	11.00	1,460	5621153
	CSCF4860ND*+TXV	A*VM66080S0XB*	55,500	38,000	13.00	11.00	1,460	5621162
	CSCF4860ND*+TXV	G*VM66080S0XB*	55,500	38,000	13.00	11.00	1,460	5621163
	CSCF4860ND*+TXV	A*VM611550XB*	55,000	37,600	13.50	11.00	1,550	5621173
	CSCF4860ND*+TXV	G*VM611550XB*	55,000	37,600	13.50	11.00	1,550	5621182
	CSCF4860ND*+TXV	A*VM611550XB*	55,000	37,600	13.50	11.00	1,550	5621183
	CSCF4860ND*+TXV	G*VM611550XB*	55,000	37,600	13.50	11.00	1,550	5621183
	CSCF4860ND*+TXV	A*EH80805C*A*	54,500	37,400	13.00	11.00	1,550	6944974
	CSCF4860ND*+TXV	A*EH801005C*A*	55,500	38,000	13.50	11.00	1,525	6944976
	CSCF4860ND*+TXV	A*EH960805C*A*	55,000	37,600	13.00	11.00	1,475	6944978
	CSCF4860ND*+TXV	A*EH961005C*A*	55,000	37,600	13.50	11.00	1,500	6944980

- <sup>1</sup> BTU/h
- <sup>2</sup> Seasonal Energy Efficiency Ratio; Certified per AHRI 210/240 @ 80°F/ 67°F/ 55°F
- <sup>3</sup> Energy Efficiency Ratio @ 80°F/ 67°F/ 55°F

- NOTES**
- Always check the S&R plate for electrical data on the unit being installed.
  - When matching the outdoor unit to the indoor unit, use the piston supplied with the outdoor unit or that specified on the piston kit chart supplied with the indoor unit.
  - EEP - Order from Service Dept. Part No. B13707-18 or new Solid State Board B13707-355. Part No. B13707-18 is not interchangeable with B13707-355. The Goodman Gas Furnace contains the EEP cooling time delay.

**DIMENSIONS**



MODEL	DIMENSIONS		
	W*	D*	H*
GSX130181E*	23	23	25 1/2
GSX130241D*	24	24	26 1/2
GSX130301B*	26	26	27 1/2
GSX130361C*	29	29	28 1/2
GSX130361E*	26	26	27 1/2
GSX130421B*	29	29	30 1/2
GSX130481B*	29	29	30 1/2
GSX130601B*	29	29	40
GSX130611A*	35 1/2	35 1/2	38 1/2

SS-GSX13

www.goodmanmfg.com

39

**CONDENSERS**

126 MARLBOROUGH STREET BOSTON, MASSACHUSETTS

03.17.2020



www.goodmanmfg.com

SS-GSX13