

Jamaica Pond Park Pathways & Entrances: Flagpole Preparation and Installation

Jamaica Pond Park, Jamaica Plain

Boston Landmarks Commission Hearing

July 28, 2020

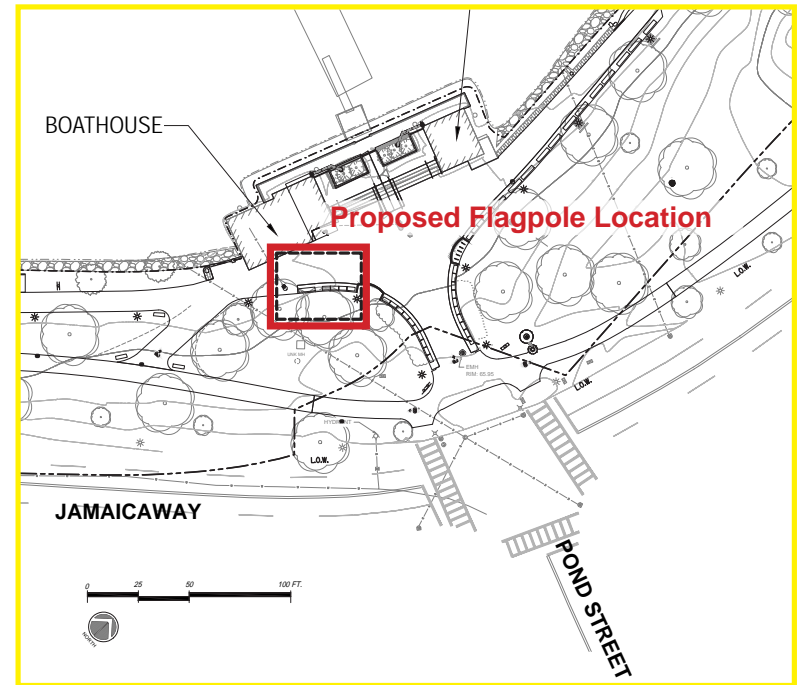
SCOPE OF WORK

- **Installation of a single 25' flagpole at Jamaica Pond Park**



kzla

Jamaica Pond Park Pathways & Entrances: Flagpole Preparation and Installation



Jamaica Pond Park Pathways & Entrances: Flagpole Preparation and Installation



Former Flagpole at Boathouse Plaza

Photo: 08/02/2017



Boathouse Plaza following flagpole removal under Certificate of Design Approval, 19.551.142, Emerald Necklace, Phase 2

Photo: 10/16/2019

Jamaica Pond Park Pathways & Entrances: Flagpole Preparation and Installation



Existing Conditions At The Proposed Flagpole Location

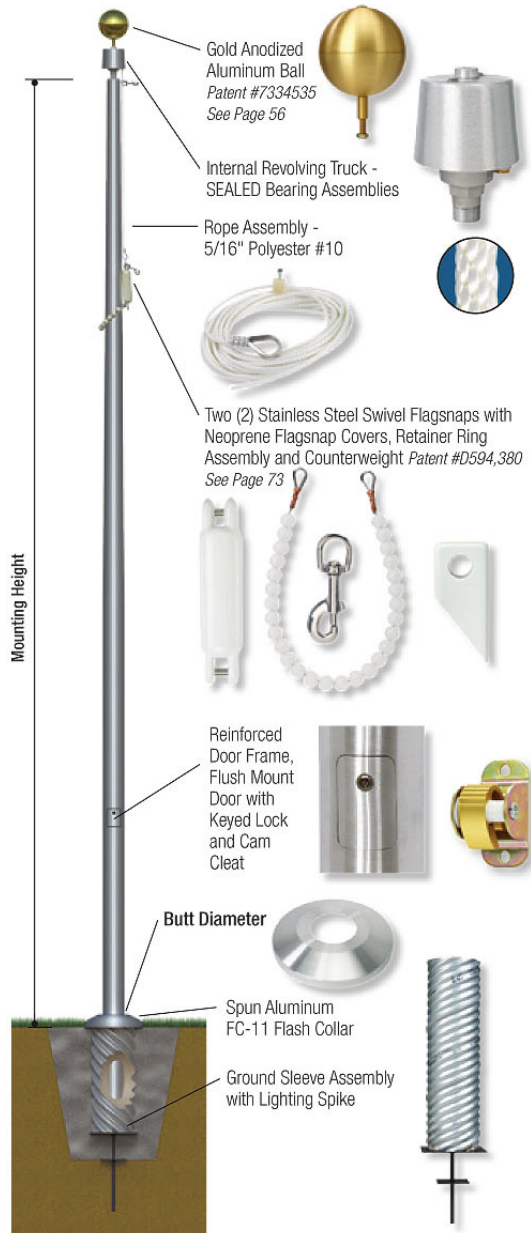
Photo: 04/30/2020

Jamaica Pond Park Pathways & Entrances:
Flagpole Preparation and Installation



Rendered Image Illustrating The Proposed Flagpole

Jamaica Pond Park Pathways & Entrances: Flagpole Preparation and Installation - Materials

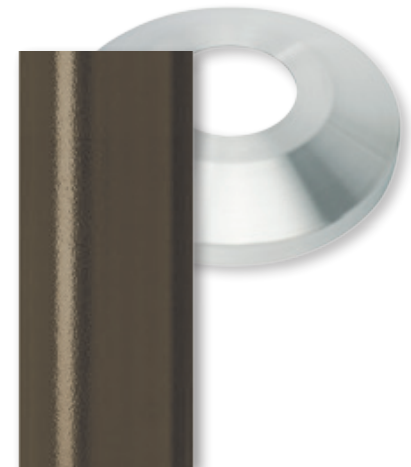


ADB - Dark Bronze

Anodized Bronze Pole



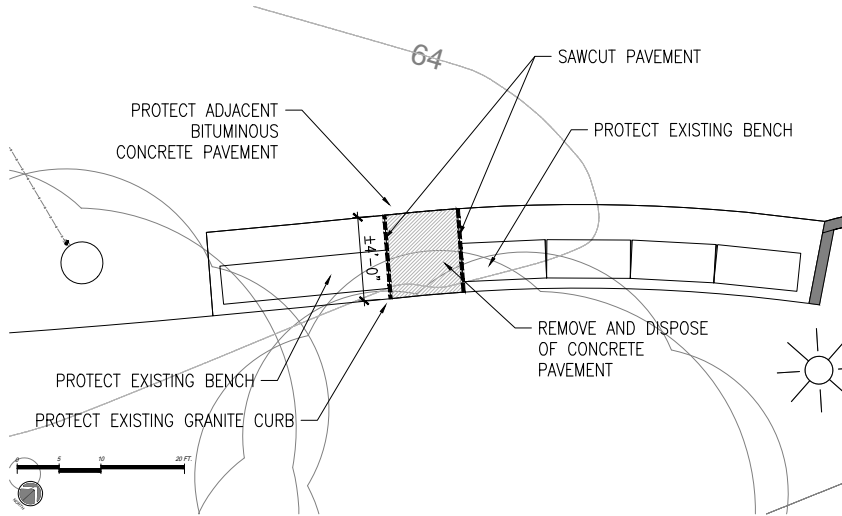
Clear Anodized Heavy-Duty
Aluminum Ball



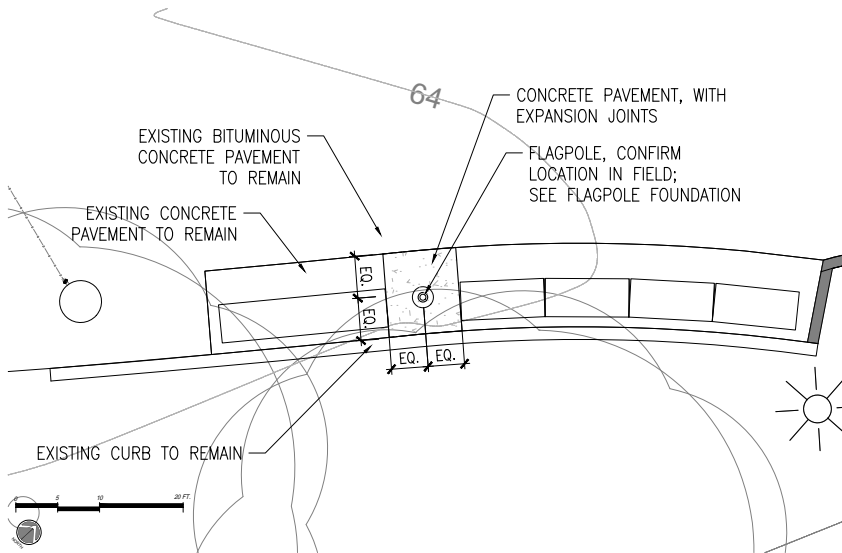
BZT - BronzeTone

Bronzetone Powdercoated
Cast Aluminum Collar

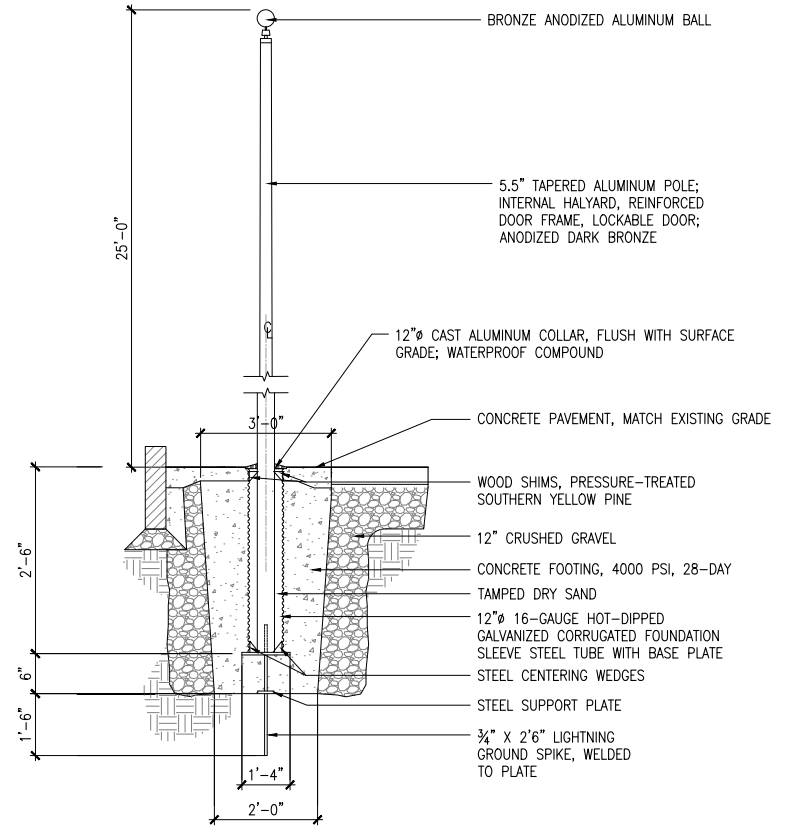
Jamaica Pond Park Pathways & Entrances: Flagpole Preparation and Installation



1 SITE PREPARATION AND DEMOLITION
SCALE: 1"=4'-0"



2 LAYOUT AND MATERIALS PLAN
SCALE: 1"=10'-0"



3 FLAGPOLE FOUNDATION
SCALE: 1/2" = 1'-0"