

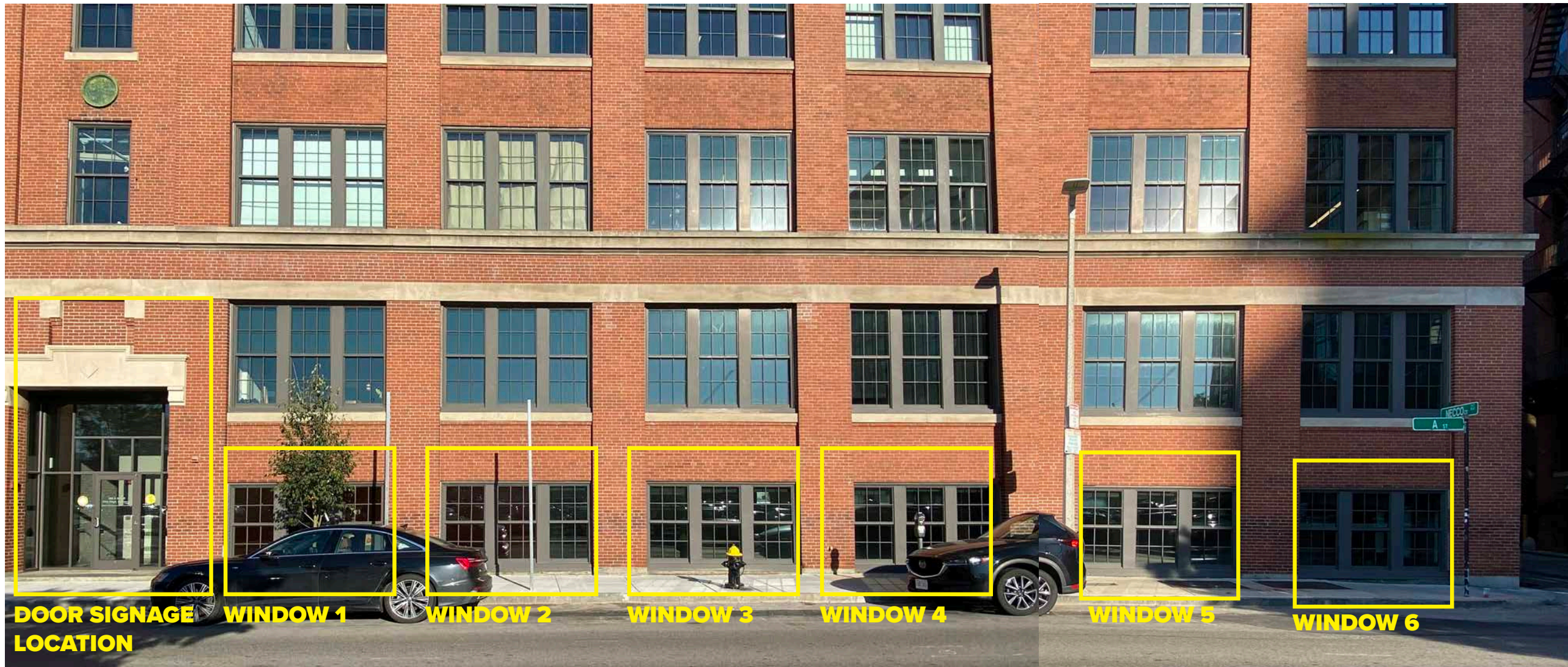
300 A STREET

PROPOSED WINDOW GRAPHICS
& ENTRANCE BLADE SIGN

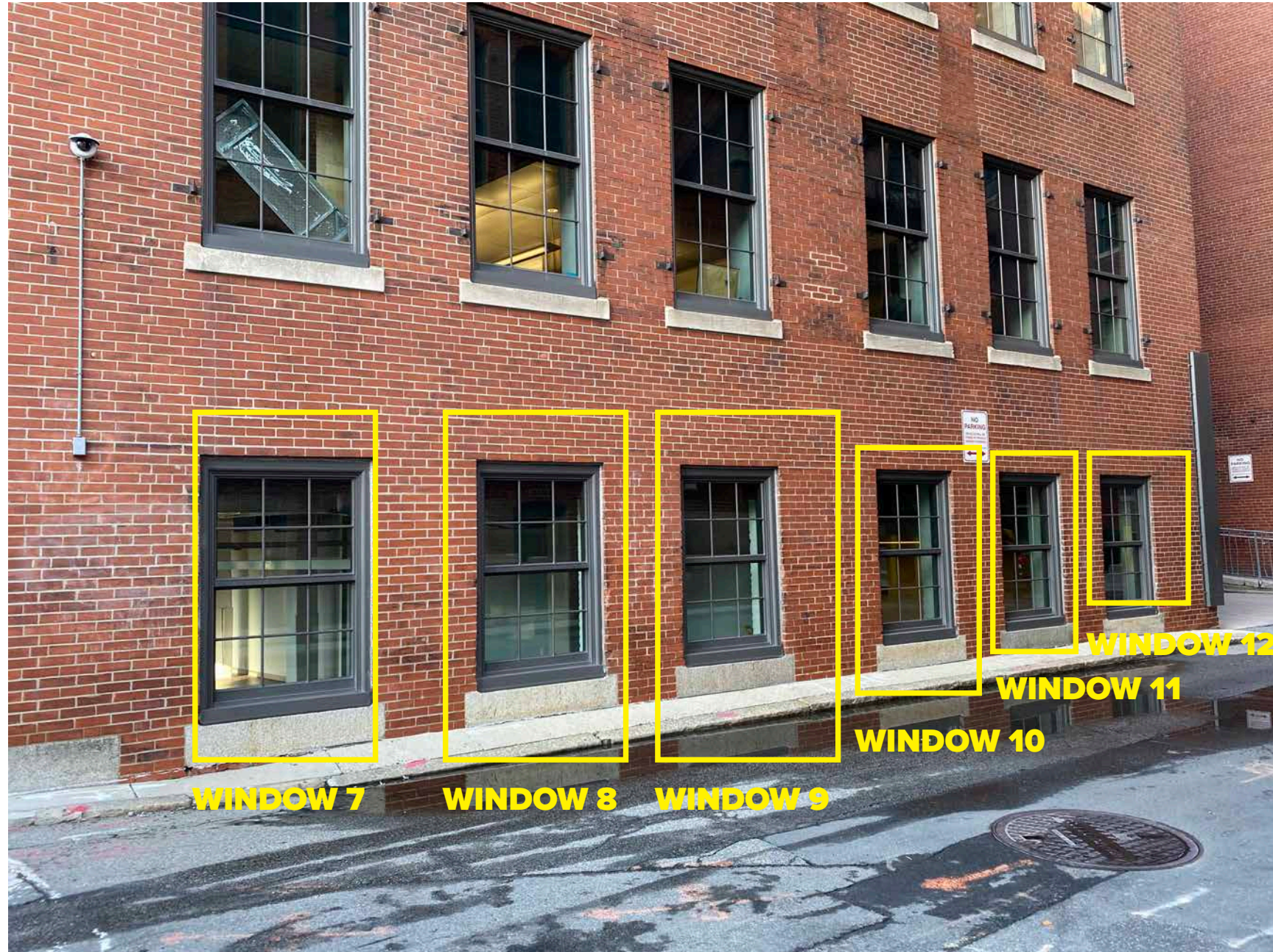
OCTOBER 5, 2020



A STREET ELEVATION



NECCO COURT WINDOWS



**300 A STREET | EXISTING CONDITIONS
OCTOBER 2020**

A STREET DOOR DETAIL



**BLADE SIGNAGE | FORT POINT CHANNEL LANDMARK DISTRICT
OCTOBER 2020**



313 CONGRESS STREET, 02210



343 CONGRESS STREET, 02210



345 CONGRESS STREET, 02210



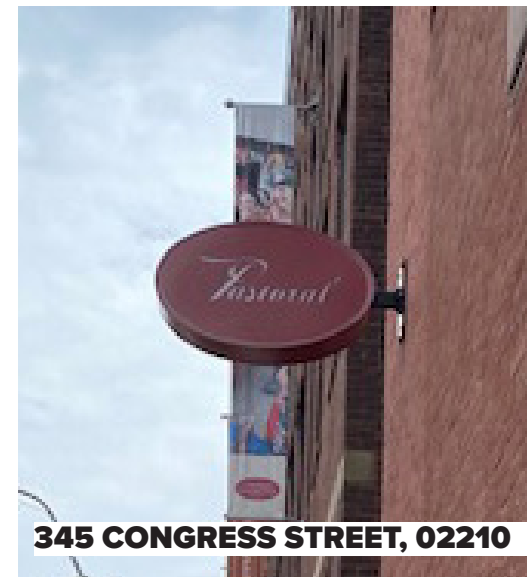
383 CONGRESS STREET, 02210



313 CONGRESS STREET, 02210



343 CONGRESS STREET, 02210



345 CONGRESS STREET, 02210



383 CONGRESS STREET, 02210

**LEASING SIGNAGE | FORT POINT CHANNEL LANDMARK DISTRICT
OCTOBER 2020**

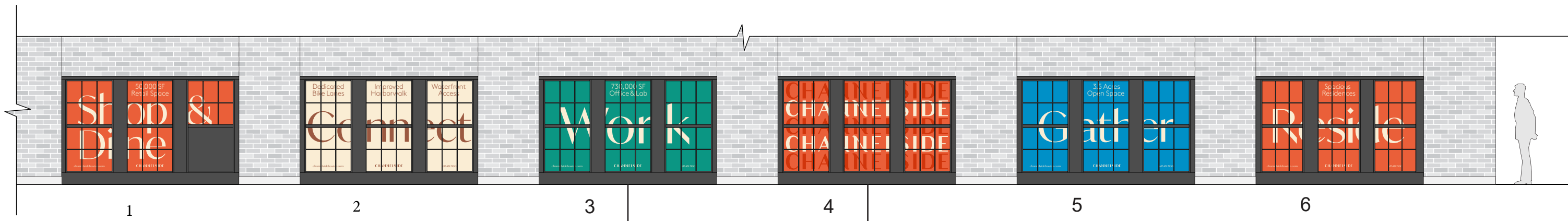
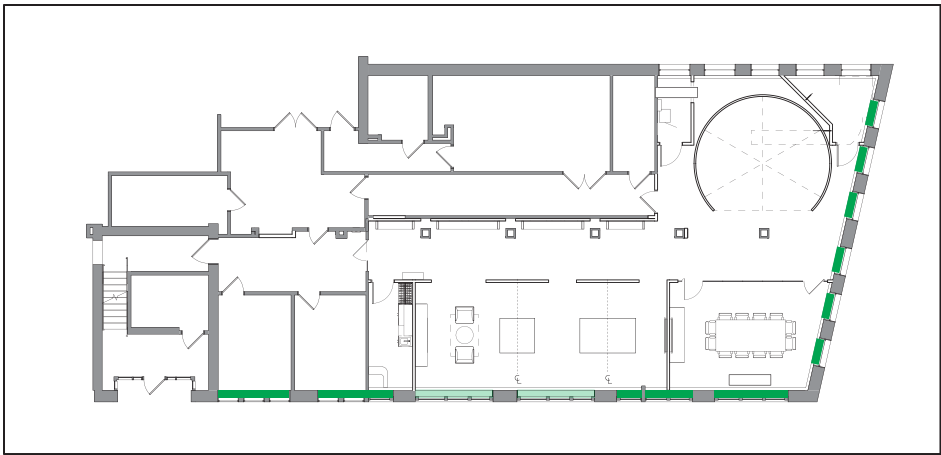


**LEASING SIGNAGE | FORT POINT CHANNEL LANDMARK DISTRICT
OCTOBER 2020**



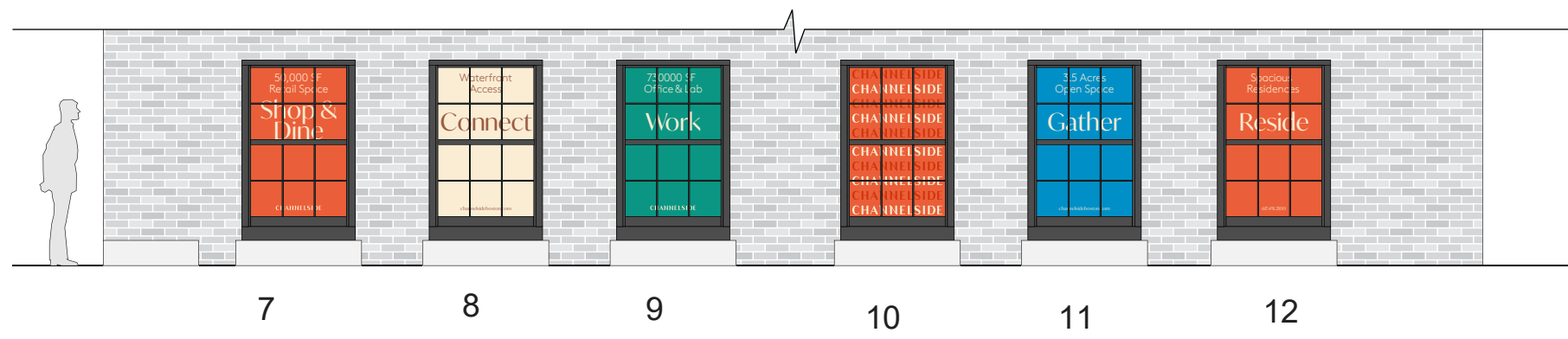
**LEASING SIGNAGE | FORT POINT CHANNEL LANDMARK DISTRICT
OCTOBER 2020**





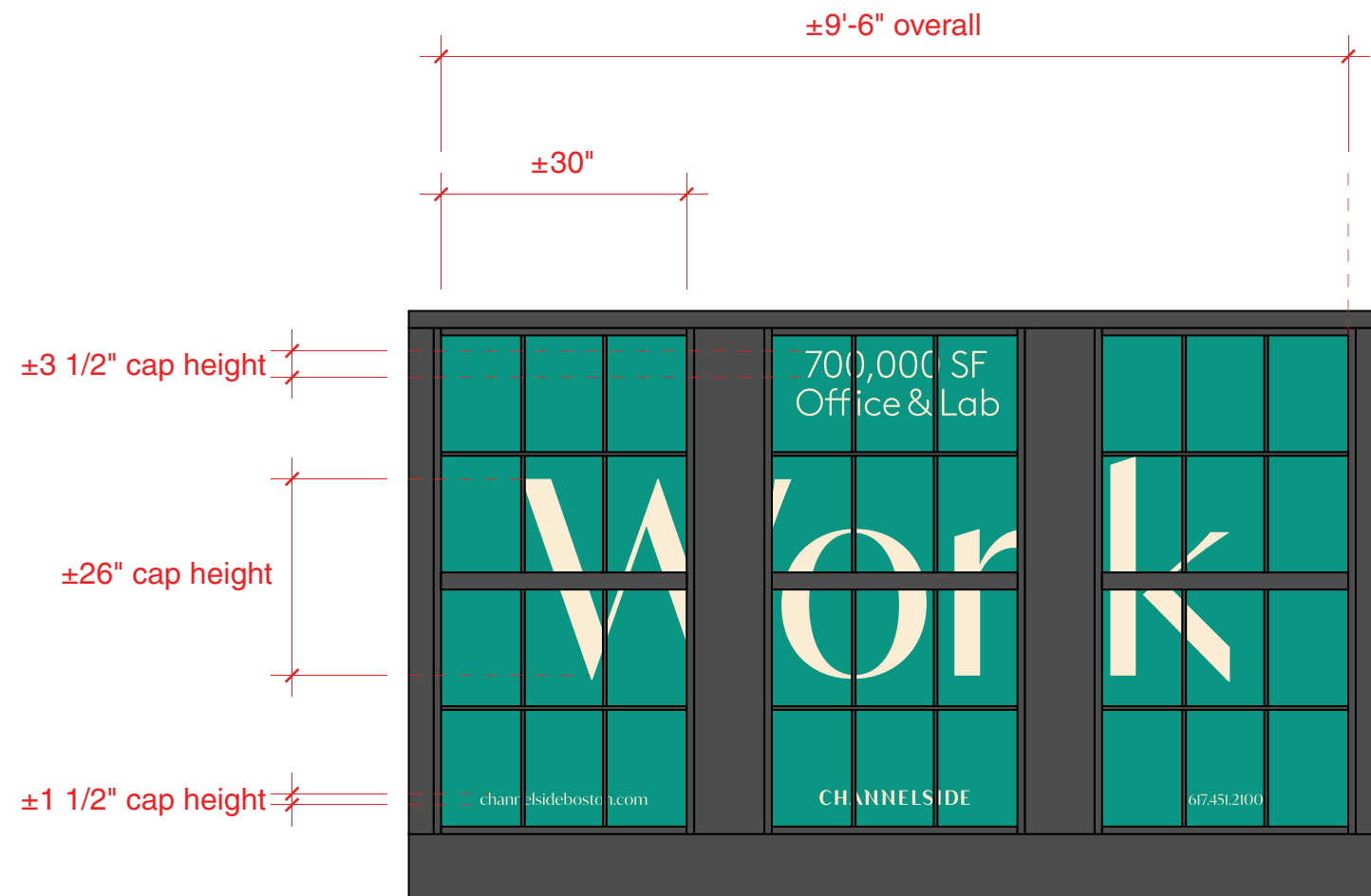
PROPOSED A STREET WINDOW GRAPHICS

Semi-transparent Vinyl

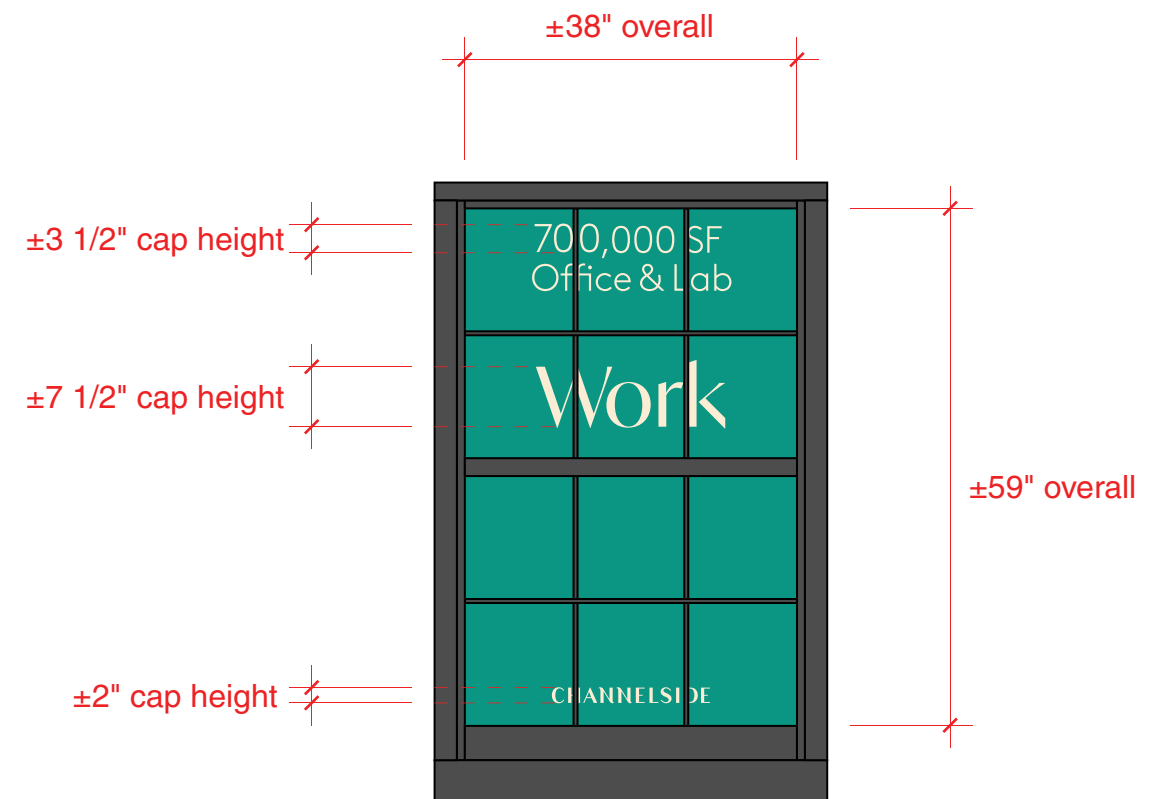


PROPOSED NECCO COURT WINDOW GRAPHICS

*Top copy for placement only. Wording may vary slightly



Bay 03 Detail



Bay 09 Detail

Font sizes and heights consistent on all window bays.
 *Top copy for placement only. Wording may vary slightly

PROPOSED WINDOW GRAPHIC- ENLARGED DETAIL



NECCO CT
A ST

Spacious
Residences
RESIDENCE
CHAMBERLIN

PROPOSED WINDOW GRAPHICS LOCATIONS



NECCO CT

A ST

CHANNELS
IDE

3.7 Acres
Open Space
CHANNELS
IDE

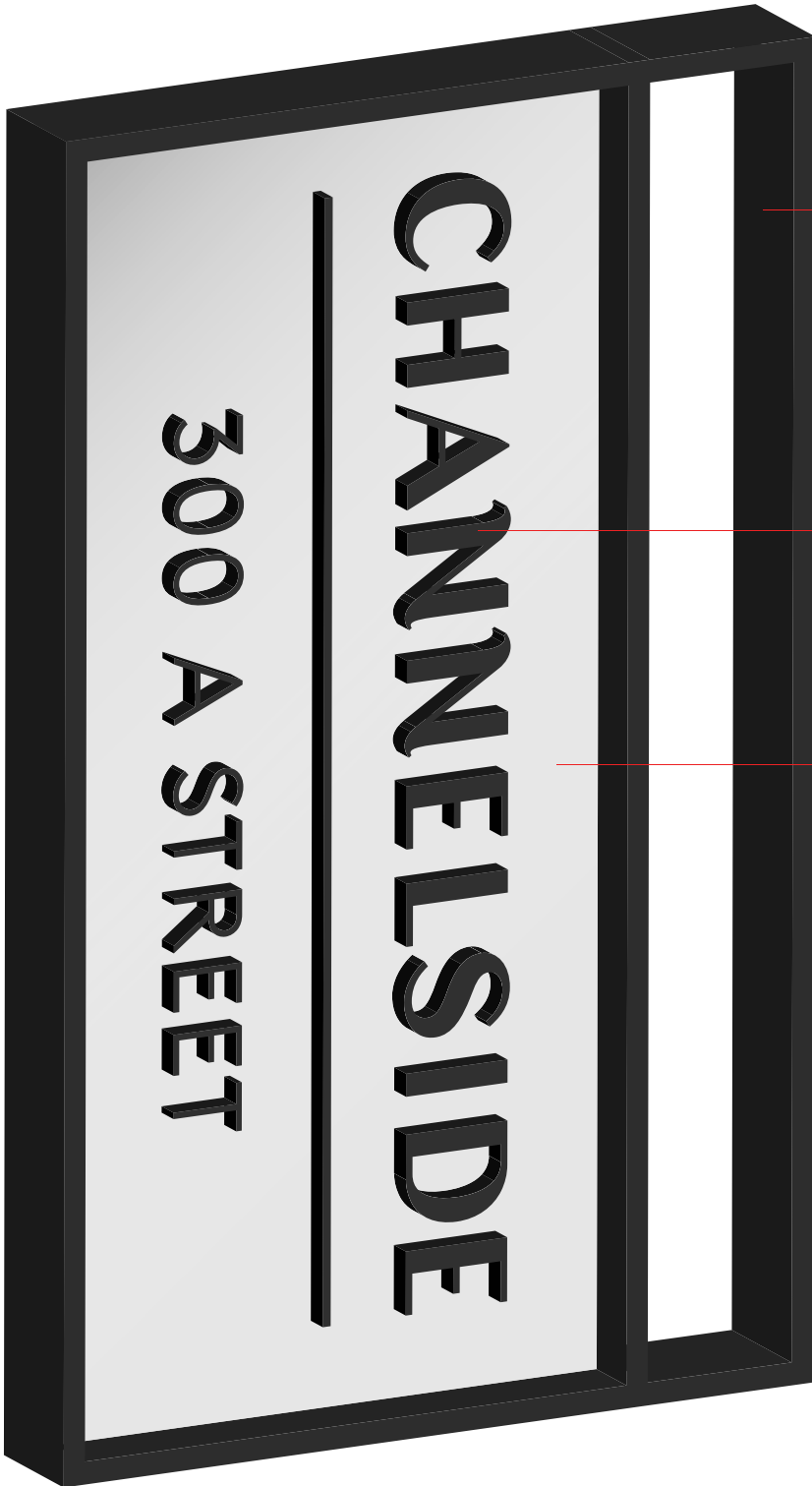
Spacious
Residences
RESIDENCES
CHANNELS
IDE

1000
Residential
Stop & Live
CHANNELS
IDE

PROPOSED WINDOW GRAPHICS - DETAIL VIEW



PROPOSED A STREET BLADE SIGN



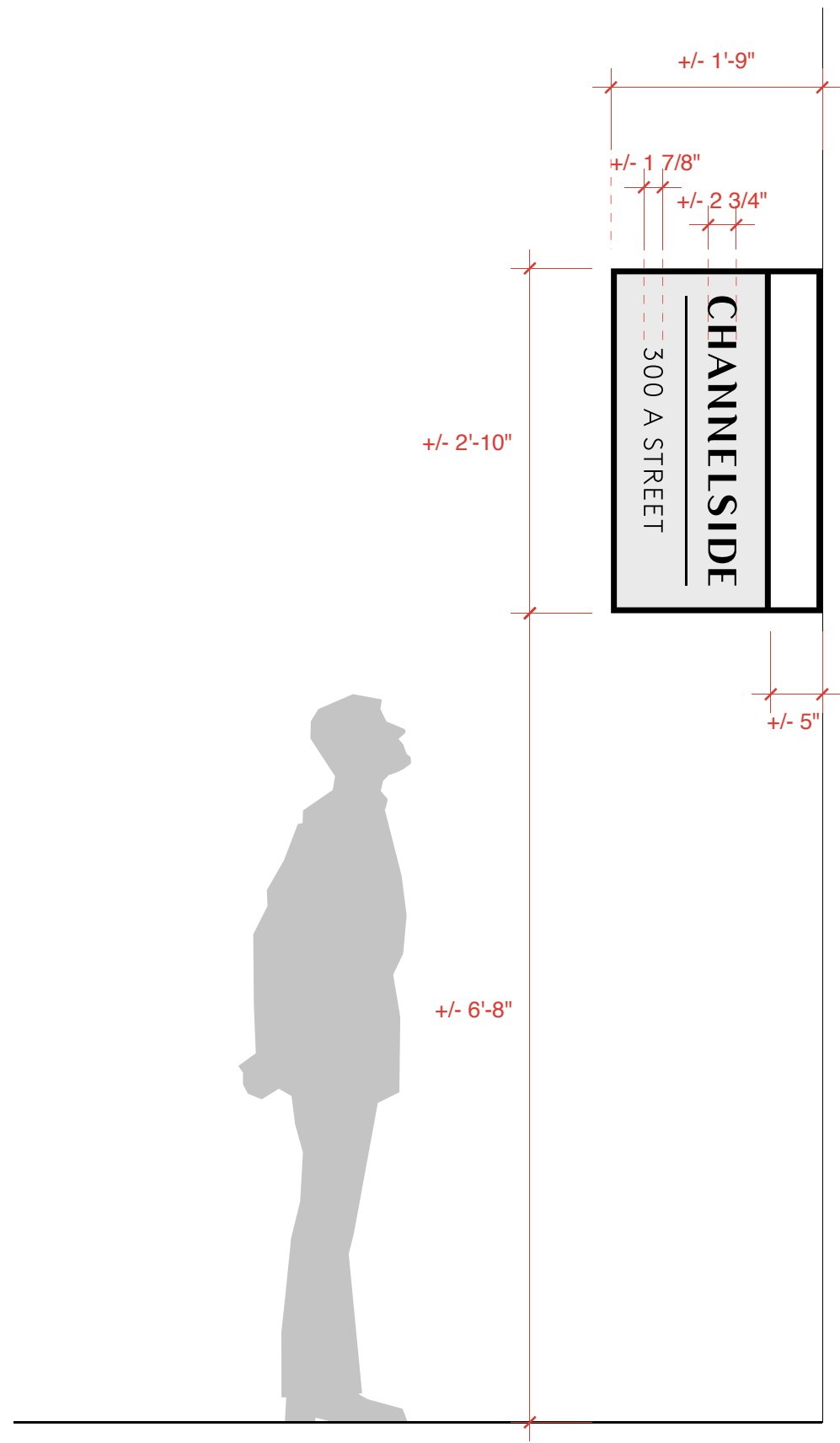
Frame/Armature:
Black Anodized Aluminum,
Brushed Finish

Mounted to existing brick via mechanical fasteners:
threaded rods and silicone, or as required.

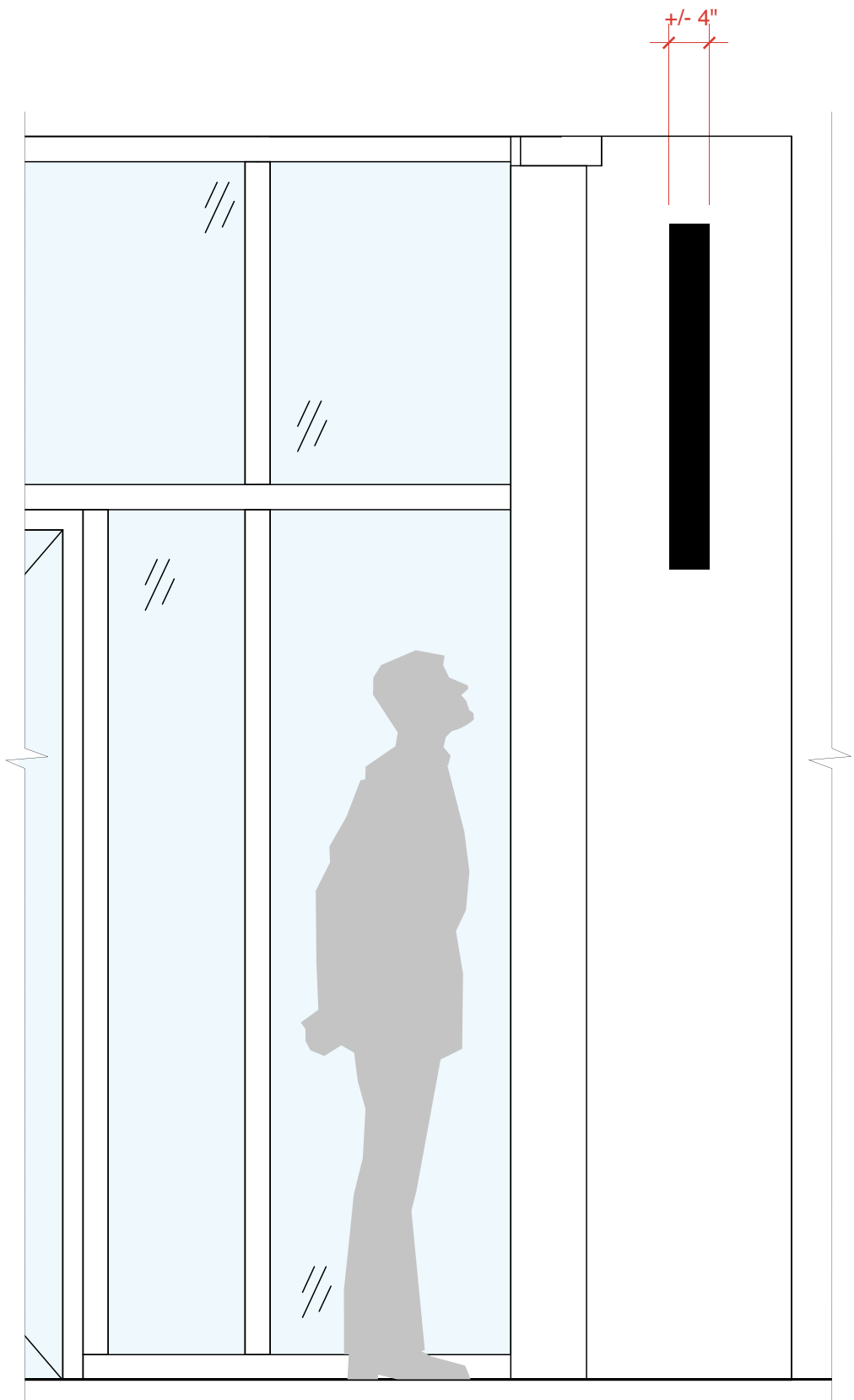
Lettering:
1/8" Deep,
Black Anodized Aluminum,
Brushed Finish

Sign Face:
Internally Illuminated
w/LED Lighting, Translucent Glass Panels

Note: See following sheet for detail dimensions



Front View



Side View