

# NEIGHBORHOOD SLOW STREETS: MORELAND ST AND MT PLEASANT AVE NEIGHBORHOOD

---

*August 2020*

# AGENDA

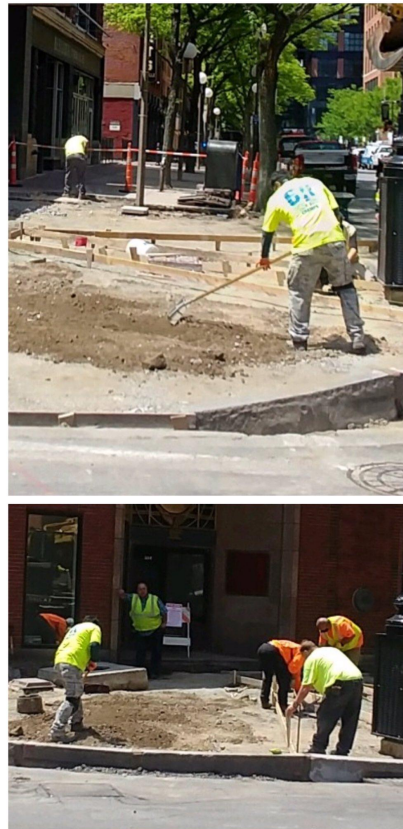
---

- ▶ Overview of Neighborhood Slow Streets program
- ▶ Our “tool kit” for Slow Streets zones
- ▶ Next steps
- ▶ Discussion and questions

# SAFER STREETS IN BOSTON

## Programs:

- ▶ Corridor redesign
- ▶ Full reconstruction
- ▶ Sidewalk repair and curb ramps
- ▶ Traffic signal upgrades
- ▶ Neighborhood Slow Streets
- ▶ Basic city services



# PROGRAM GOALS

---

- ▶ Create safe streets for walking, biking and driving
- ▶ Reduce the number and severity of crashes on streets
- ▶ Engage residents in prioritizing key areas for street safety interventions

# PRIORITIZING PLACES WITH THE HIGHEST NEED

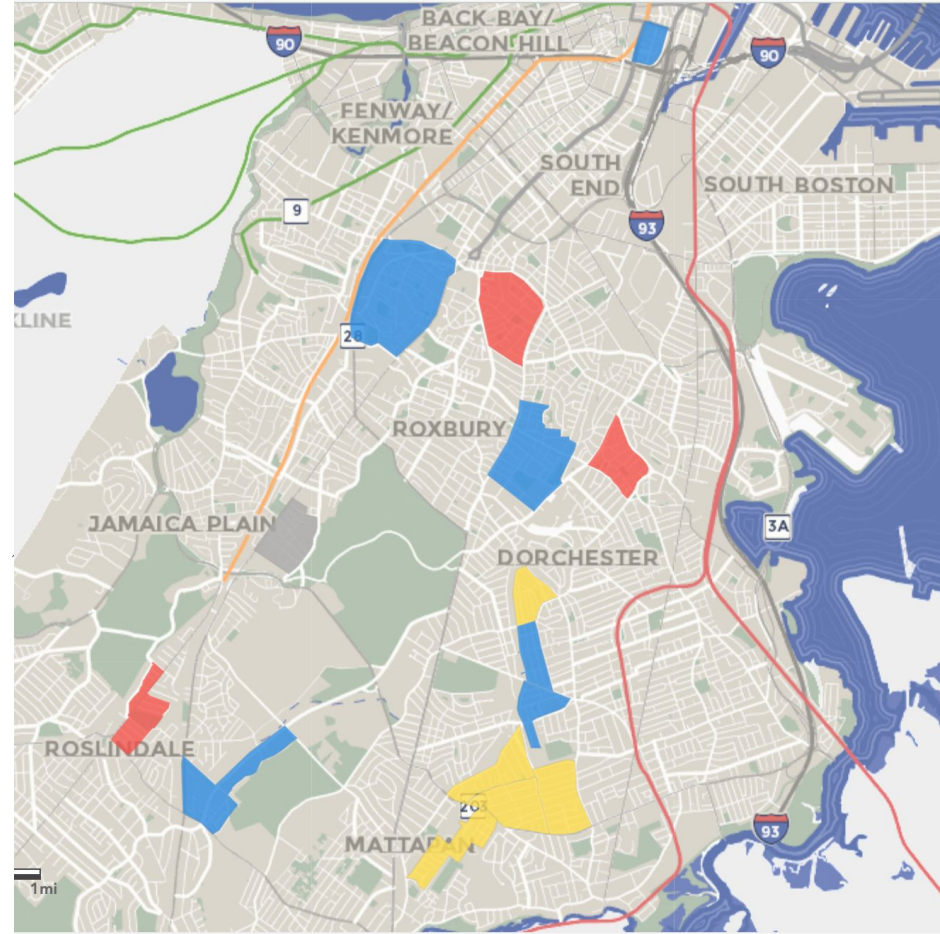
Neighborhood Slow Streets zones are prioritized and added to the program based on data:

**ZONES WERE SCORED ON A SCALE OF 0 POINTS (LESS NEED) TO 100 POINTS (MOST NEED):**

UP TO 60 POINTS				UP TO 35 POINTS		UP TO 15 POINTS						
<b>ELDERS</b> % of population are over 65 years old (Census data)	+	<b>YOUTH</b> % of households with youth under 18 years old (Census data)	+	<b>DISABILITY</b> % of households with a person with a disability (Census data)	+	<b>COMMUNITY PLACES</b> Public schools, community centers, libraries, and parks within or on the border of the zone	+	<b>CRASHES ON MINOR STREETS</b> Crashes per mile on the smaller, neighborhood streets (EMS data)	+	<b>CRASHES ON MAJOR STREETS</b> Crashes at intersection of major streets and smaller, neighborhood streets (EMS data)	+	<b>CONNECTIONS</b> Nearby transit stops and stations as well as walking and biking networks identified in Go Boston 2030 and other neighborhood plans

# OTHER ZONES

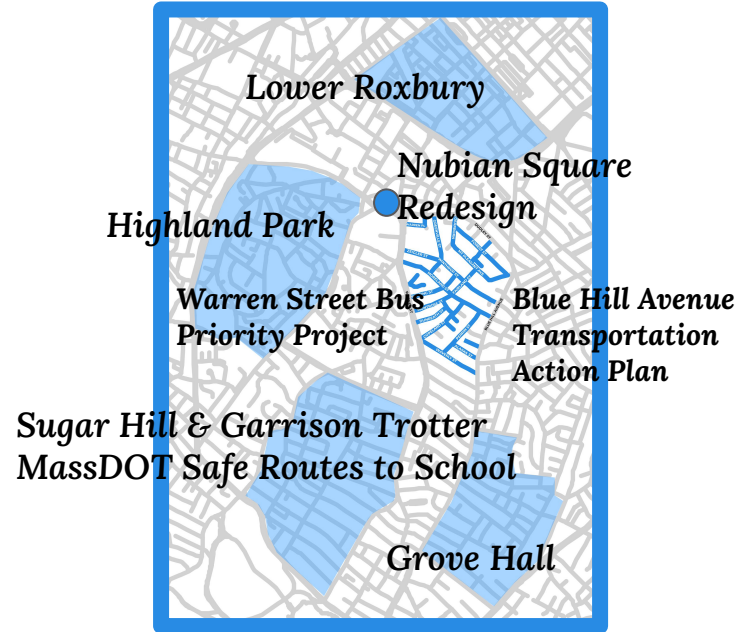
- ▶ We have worked with twelve other zones to date
  - Starting construction in the **blue** zones
  - Final design in the **yellow** zones
- ▶ Added three new zones (red) this year



# YOUR ZONE



## NEARBY NEIGHBORHOOD SAFETY PROJECT AREAS:



# UNDERSTANDING YOUR SAFETY CONCERNS

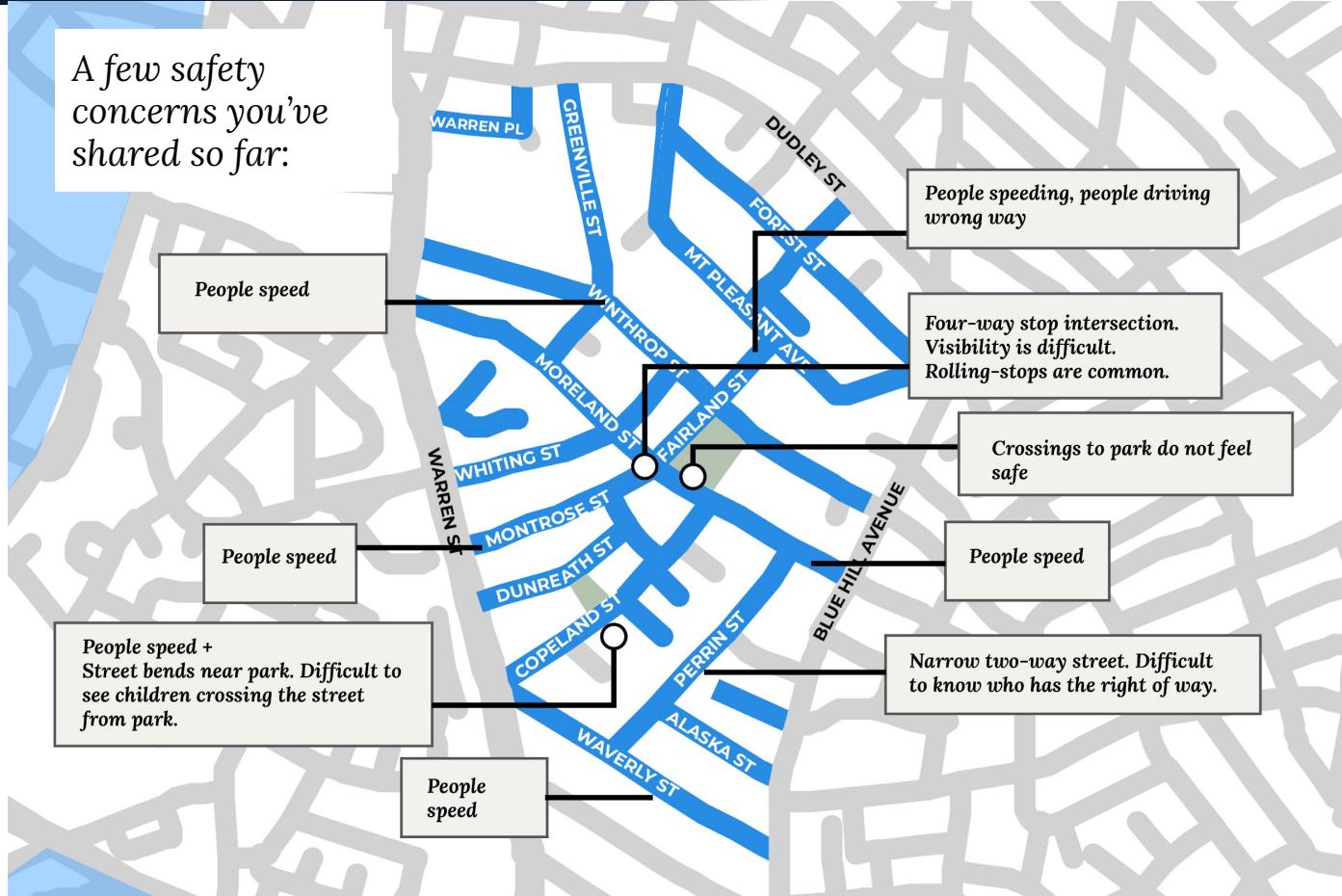
---

- ▶ **Document, listen to your safety concerns**
  - *Hold a series of activities inviting residents to submit concerns and engage in discussions with their neighbors*
- ▶ **Work with neighbors to prioritize safety concerns**
  - *Address the most urgent safety issues through lasting design changes*



# SAFETY CONCERNS

A few safety concerns you've shared so far:



People speed

People speeding, people driving wrong way

Four-way stop intersection. Visibility is difficult. Rolling-stops are common.

Crossings to park do not feel safe

People speed

People speed

People speed + Street bends near park. Difficult to see children crossing the street from park.

Narrow two-way street. Difficult to know who has the right of way.

People speed

# This Saturday Drop-in Workshop

Talk with staff and pick up project information

Saturday, September 19

Noon - 3 pm

Gertrude Howes  
Playground

*To bring with you: a mask  
and a pen or marker*



# October 3rd Drop-in Workshop

Talk with staff and pick up project information

Saturday, October 3rd

Noon - 3 pm

*Mt. Pleasant Avenue  
Playground*

Rain Date: Sunday, Oct. 4

*To bring with you: a mask  
and a pen or marker*

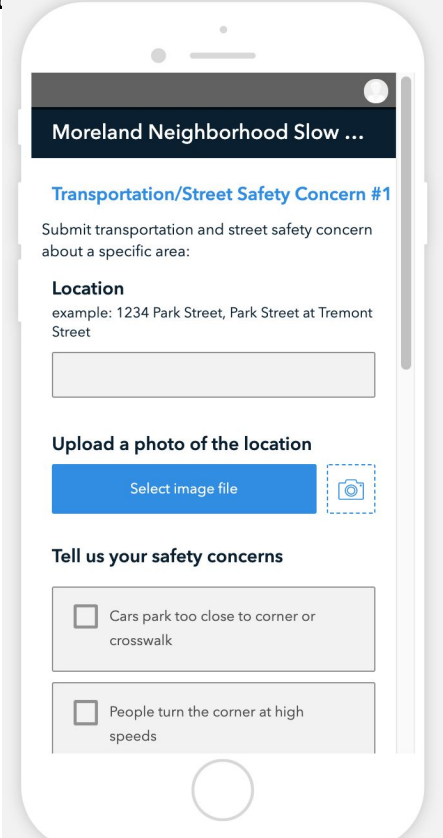


# Online Survey

Go to: [boston.gov/slow-streets/moreland-mtnpleasant](https://boston.gov/slow-streets/moreland-mtnpleasant)

You can use your phone  
or mobile device to  
complete the survey and  
upload photos

You can also download a  
print copy and write your  
comments



The image shows a smartphone screen displaying a survey form. The title bar at the top reads "Moreland Neighborhood Slow ...". Below the title bar, the survey is titled "Transportation/Street Safety Concern #1". The instructions state: "Submit transportation and street safety concern about a specific area:". The "Location" section includes an example: "example: 1234 Park Street, Park Street at Tremont Street" and a text input field. The "Upload a photo of the location" section features a blue button labeled "Select image file" and a camera icon. The "Tell us your safety concerns" section contains two checkboxes: "Cars park too close to corner or crosswalk" and "People turn the corner at high speeds".

# SUBMIT PHOTOS: *Photos can help describe issues*

Verizon 11:09 AM 88%

survey123.arcgis.com

Moreland Street and Mt Pleasant Area

**Transportation/Street Safety Concern #1**

Submit transportation and street safety concern about specific area:

**Location**  
example: 1234 Park Street, Park Street at Tremont Street

Upload a photo of the location

Select image file

Tell us your safety concerns

Take Photo

Photo Library

Browse

Cancel



# VIRTUAL ZOOM MEETING

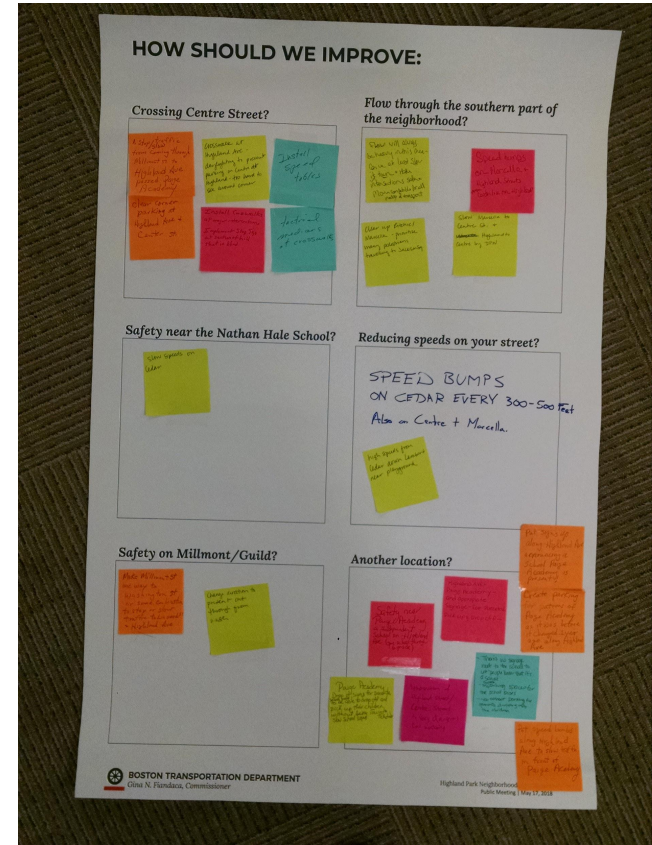
---

Saturday, October 3rd  
6 - 7:30 pm

*Zoom link will be  
available on website*

# YOUR CONCERNS INFORM YOUR PLAN

- ▶ Review all of your stories, comments, and concerns
- ▶ Evaluate potential tools to address your major concerns
- ▶ Bring concepts to you to discuss before moving ahead



# EXPEDITED TIMELINE

---



## THROUGH FALL 2020

- *Continue to hear your safety concerns, discuss tools*
- *Create a concept plan*



## WINTER 2021

- *Review concept plan with residents identifying key improvements*
- *Begin developing engineering plans and investigate concepts through engineering process*



## SPRING THROUGH EARLY SUMMER 2021

- *Complete engineering details*



## LATE SUMMER 2021

- *Schedule construction*



# *Street Safety Tools*

# 20 MPH SIGNS + PAVEMENT MARKINGS

Speed limits on Slow Street zone streets are lowered to 20 MPH, marked by signs and road markings.

MPH  
20

A photograph of a residential street. On the left side, a utility pole has a white speed limit sign that reads 'SPEED LIMIT 20' with 'SLOW ZONE' above it. Further down the street, another sign is visible. On the asphalt in the foreground, the words 'MPH' and the number '20' are painted in large white letters. On the right side of the road, a line of cars is parked, including a red car and a dark grey car in the immediate foreground. The street is lined with trees and houses.

# SPEED HUMPS

Speed humps are installed on residential streets to encourage slower driving.



# CLEAR CORNERS

Drivers parked 20 feet within an intersection can block sight lines of other users on the street.



# CLEAR CORNERS

We restrict parking with paint and flex posts to improve visibility of other people on the street, including small children.



# CURB EXTENSIONS

Curb extensions create a shorter crossing. The sidewalk is extended into the street approximately 6 feet.



# CROSSING ISLANDS

Crossing islands provide a place for people to pause when crossing multiple lanes.



## RAISED CROSSWALKS

Raised crosswalks are at the same level as the sidewalk. They slow drivers and make it easier to see people crossing.

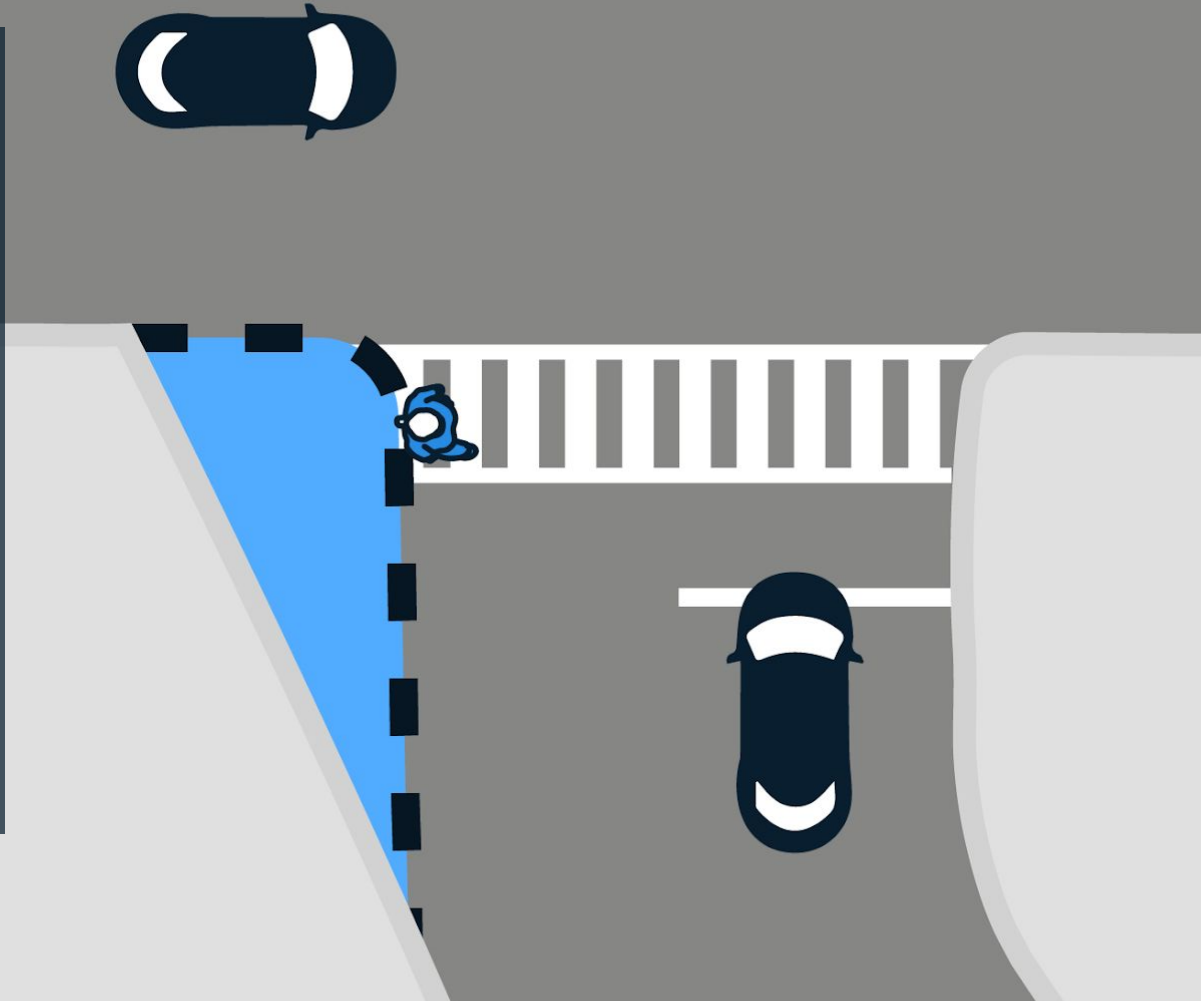




“T”

## INTERSECTIONS

We redesign irregularly-shaped intersections by extending the curb to create intersections with right-angles. This improves visibility at intersections and reduces conflicts.



# THANK YOU

---

*[boston.gov/slow-streets/moreland](https://boston.gov/slow-streets/moreland)*

*[hannah.fong@boston.gov](mailto:hannah.fong@boston.gov)*