

rear elevation of 208 Beacon Street

208 Beacon St.



view of neighboring rear facades

208 Beacon St.



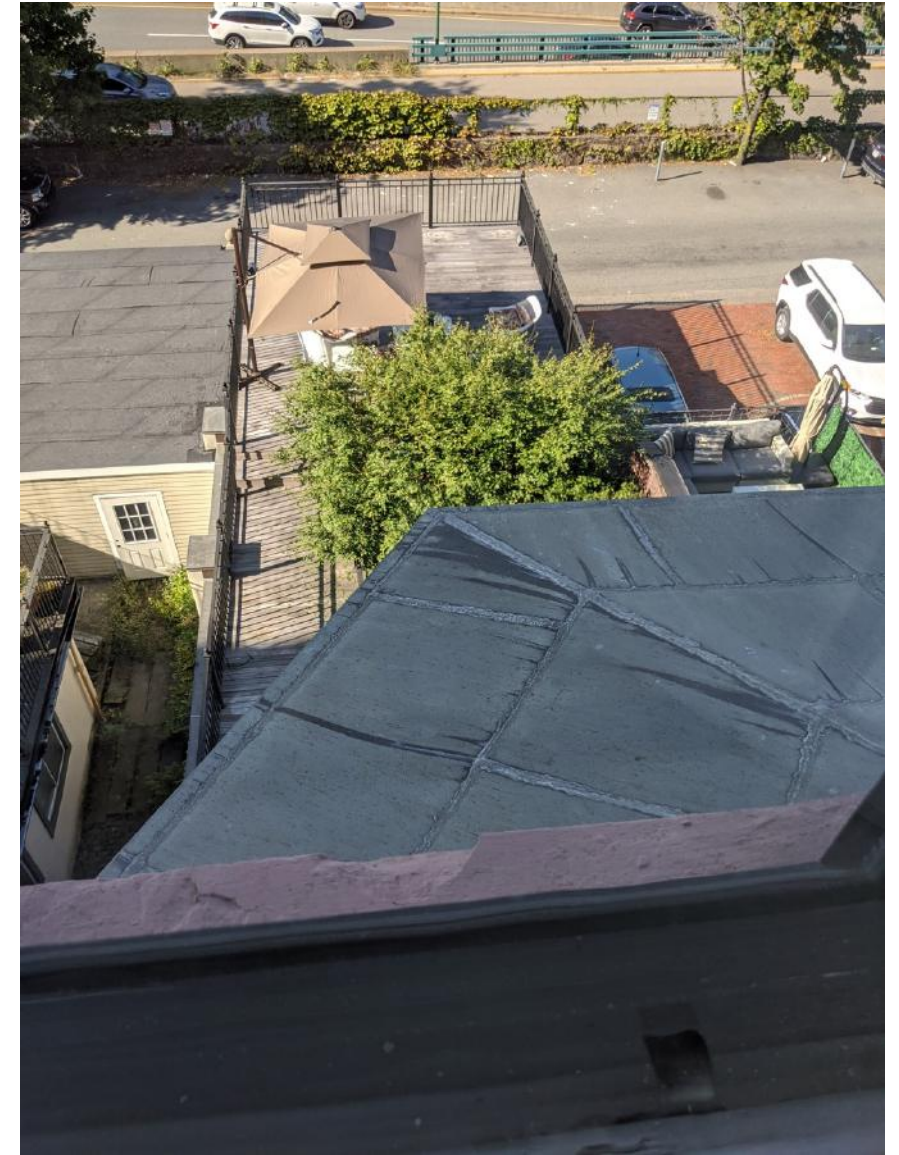
rear elevation view



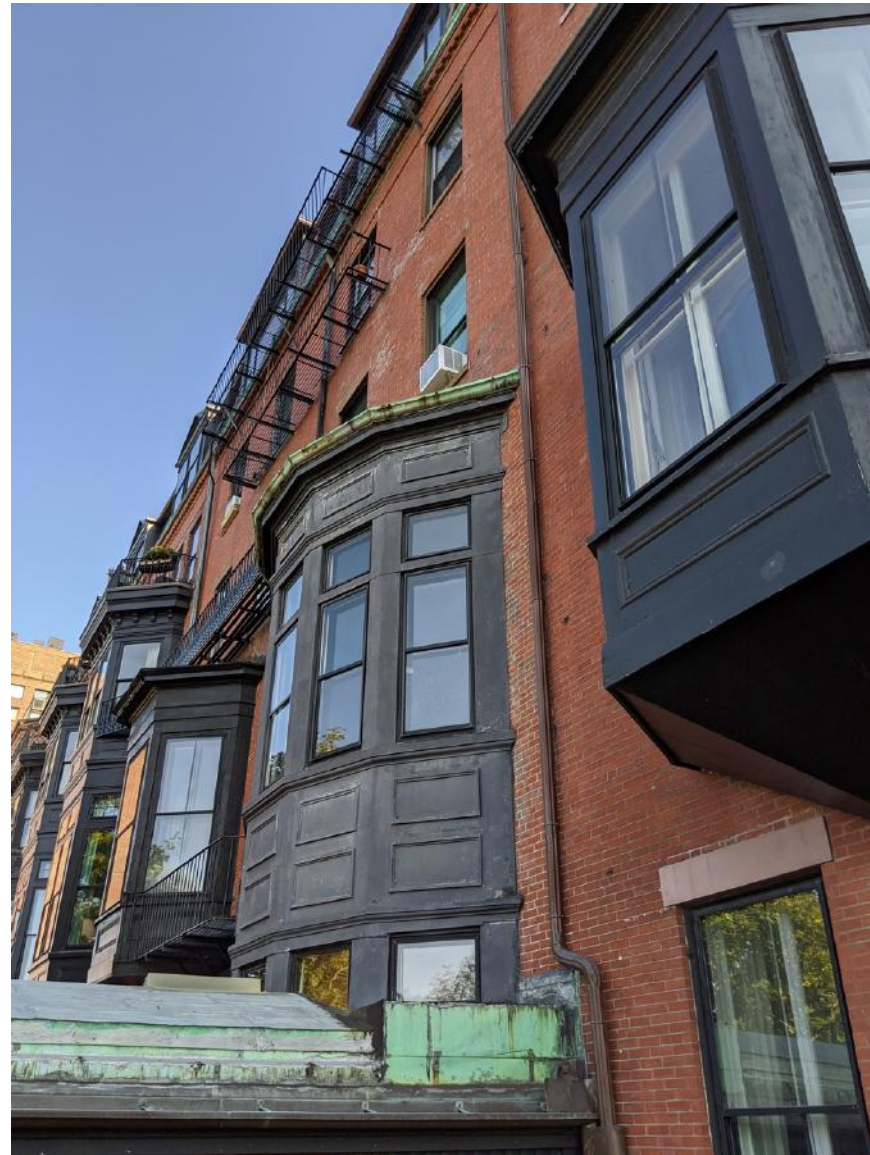
existing oriole, wood exterior painted black



black outline denotes area of brick removal



existing copper roof



abutting 2 story oriole



neighboring similar oriole with lower trim removed



outline of previous lower trim element still visible  
in discoloration of bricks