

david@choo-design.com

From: Ty Gupta <tygupta@brahmallc.com>
Sent: Tuesday, October 20, 2020 12:32 PM
To: David Freed
Cc: Ty Gupta
Subject: Fwd: 19229, 30 Chestnut

FYI...

Begin forwarded message:

From: "David Freed" <david@choo-design.com>
Subject: 19229, 30 Chestnut
Date: July 23, 2020 at 1:18:43 PM EDT
To: <tygupta@brahmallc.com>

Hi Ty,

Basement front two windows are original (knife-edge muntins)
First Floor front and rear original (knife-edge muntins)(rear are triple hung)
Second Floor front windows are newer sashes in original units, rear are new window units with aluminum tracks
Third Floor front and bay is a mix of (3) original and (2) new window units, rear are all new window units with aluminum tracks
Fourth Floor front original, rear new window units with aluminum tracks
Fifth Floor excluded (addition to be rebuilt per landmarks approval)

Pics 1981, 1982 are weight and pulley window units with knife edge muntins – I believe these are the original windows and sashes

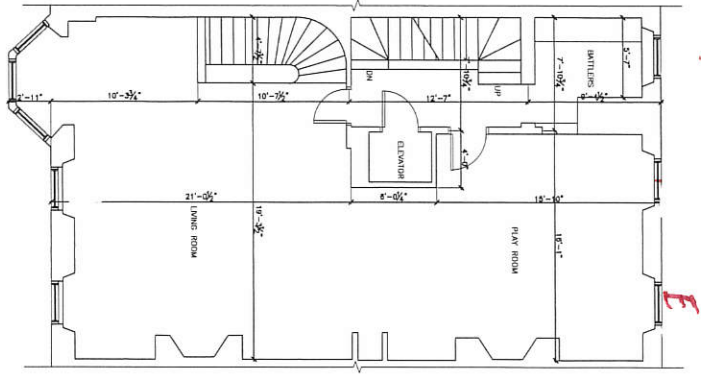
Pic 1985 is a sash with a different muntin – maybe Victorian period, not original

Pic 1989 is a modern window unit with aluminum tracks

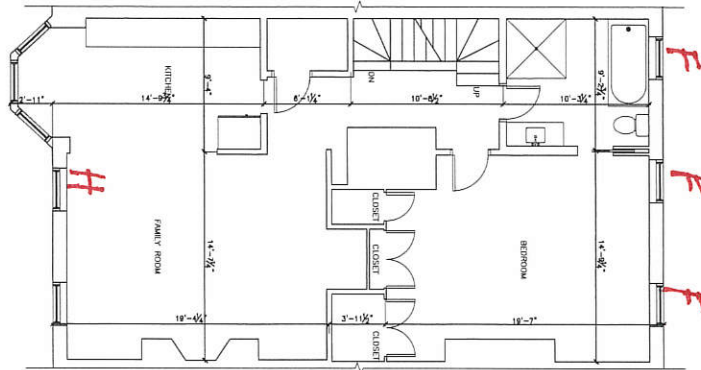
Call anytime with questions or comments

Kind Regards,

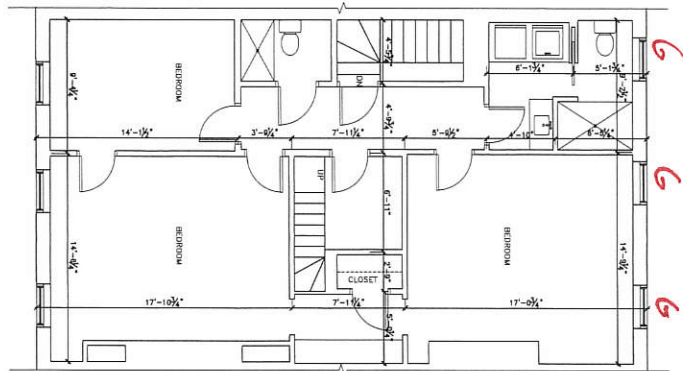
David Freed, AIA
Choo & Co., Inc.
617-786-7727



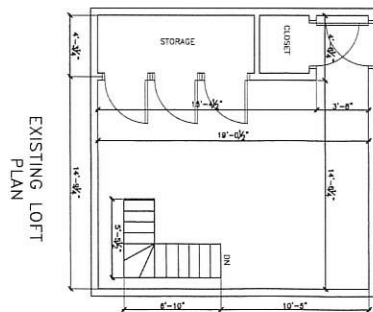
EXISTING SECOND FLOOR PLAN



EXISTING THIRD FLOOR PLAN



EXISTING FOURTH FLOOR PLAN



EXISTING LOFT PLAN

DATE	REVISION

EXISTING FLOOR PLANS

30 CHESTNUT STREET,
BOSTON, MASSACHUSETTS

RAW & ASSOC., INC.
REGISTERED ARCHITECTS
100 STATE STREET, SUITE 200
BOSTON, MASSACHUSETTS 02109
TEL: 617-552-1234 FAX: 617-552-1235

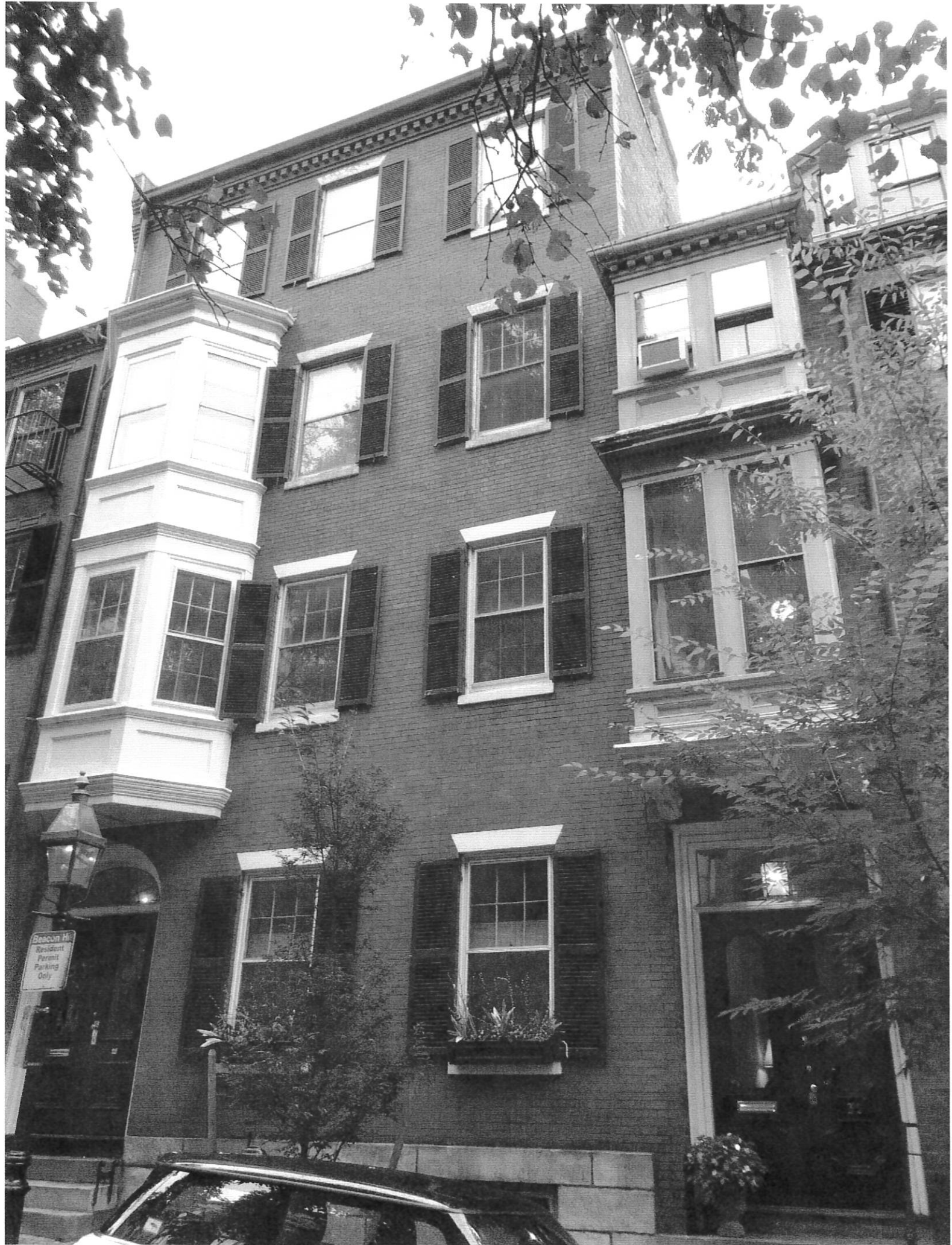
DESIGNED BY: E.F.
DRAWN BY: E.F.
CHECKED BY: RAW

SCALE: 1/4"=1'-0"
APPROVED: RAW
DATE: 08/08/2019

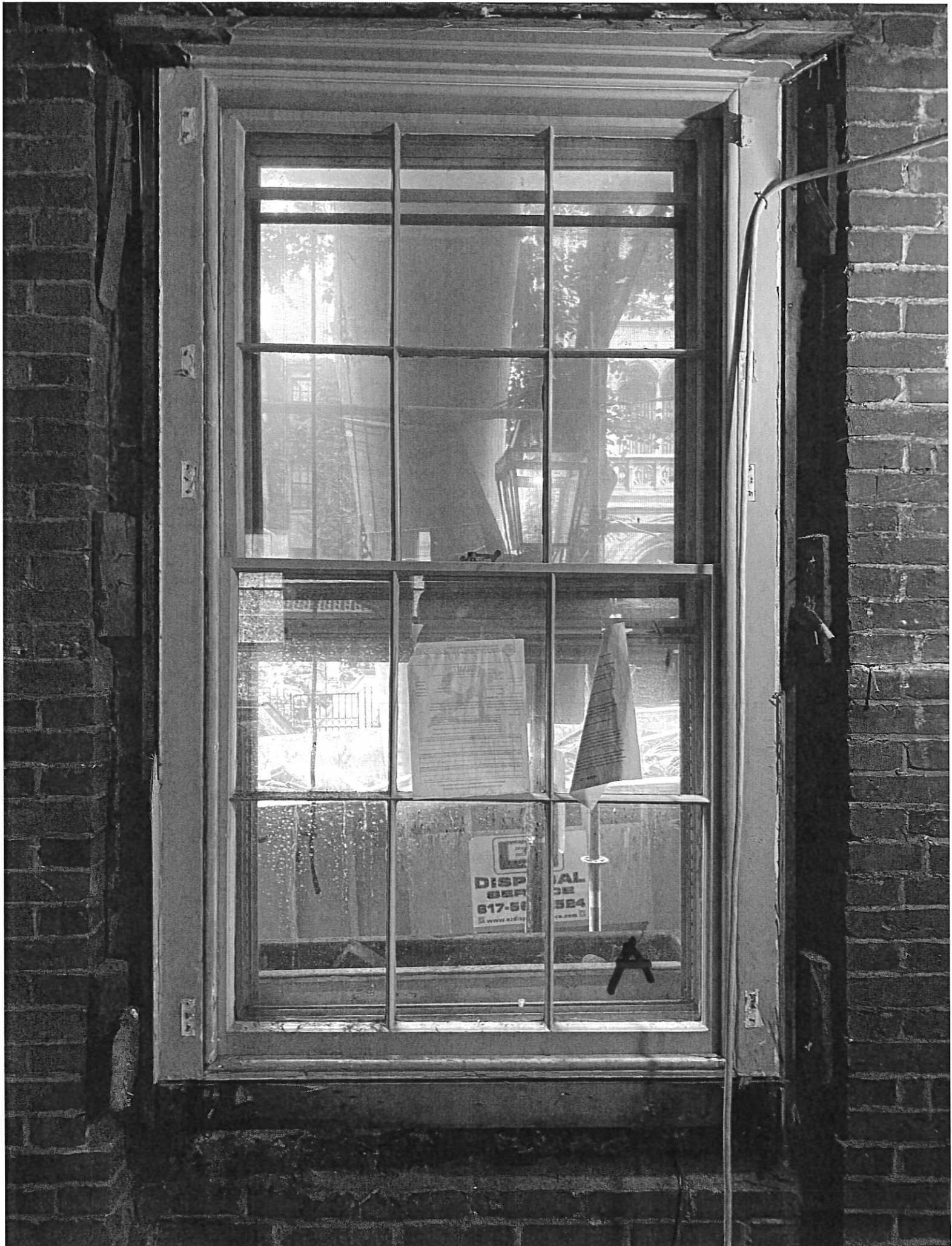
DRAWING NO. 2



Beacon Hill
Resident
Permit
Parking
Only







DISPOSAL SERVICE
617-584-584
www.azdisposal.com

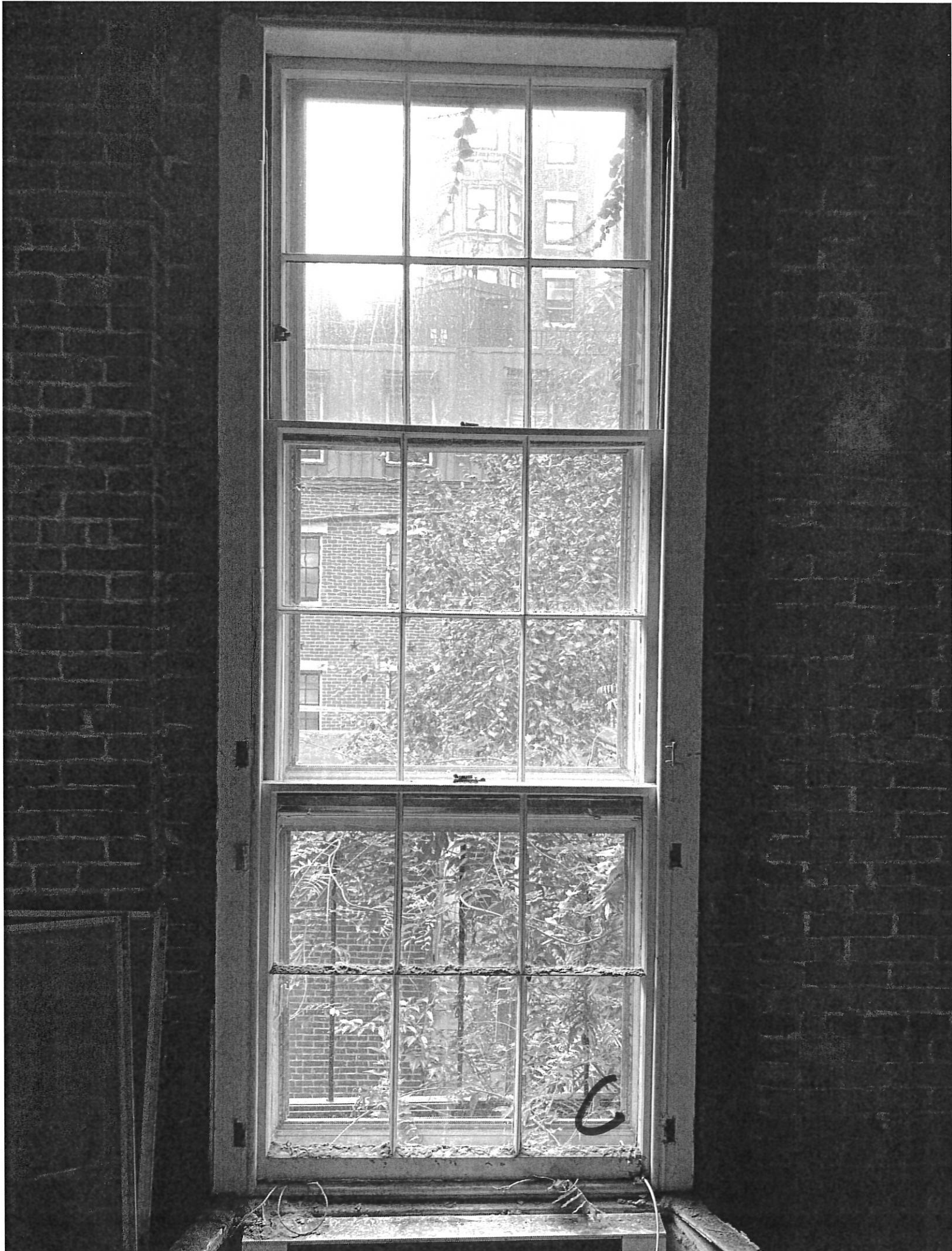
...of March 17 and v
...ed at this time, un
...ny currently perm
...on by Monday, Marc
...y of Boston.

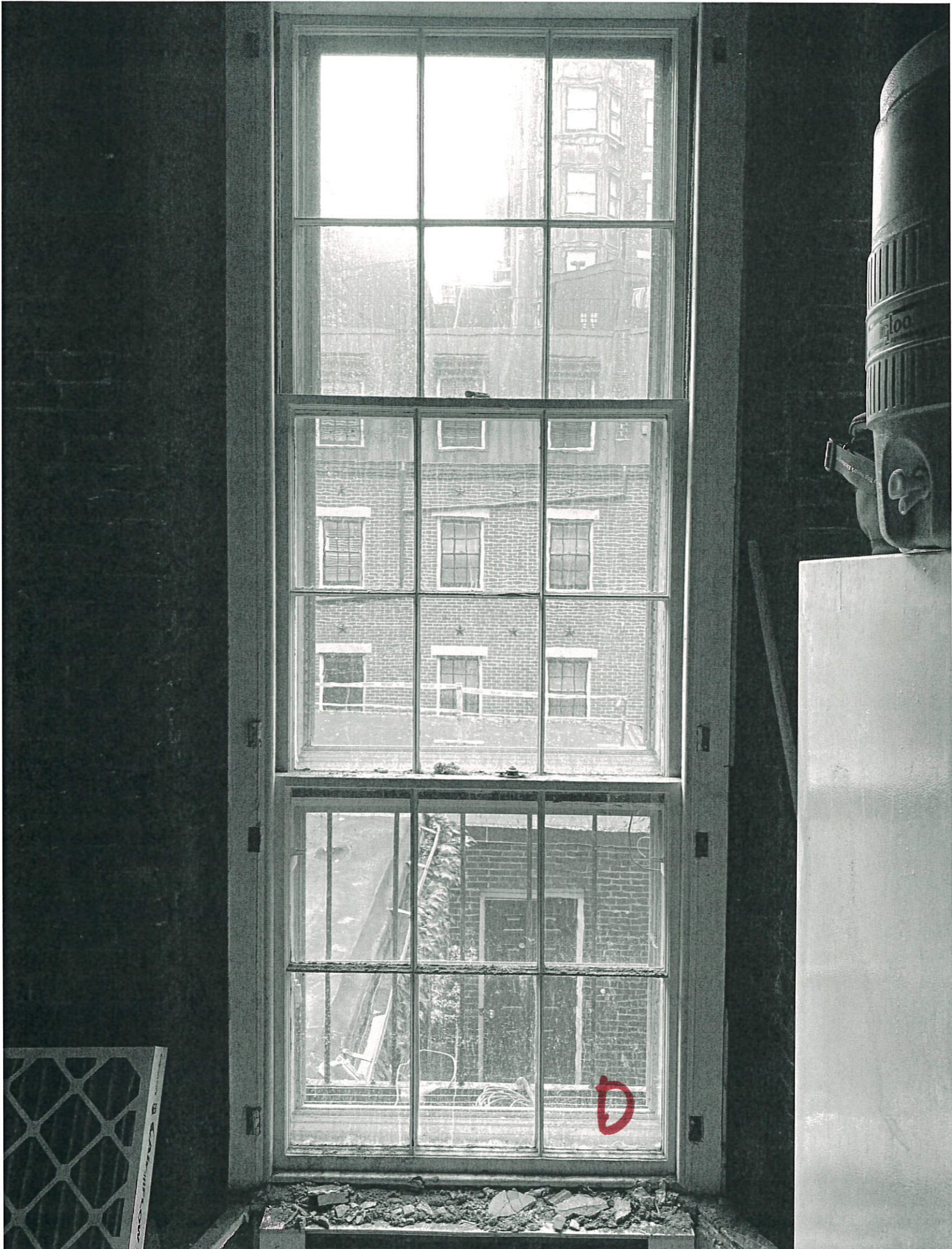
CITY

A

























G

