

10' 11-1/2" (131-1/2")

# SUPERCUTS

20" "C"

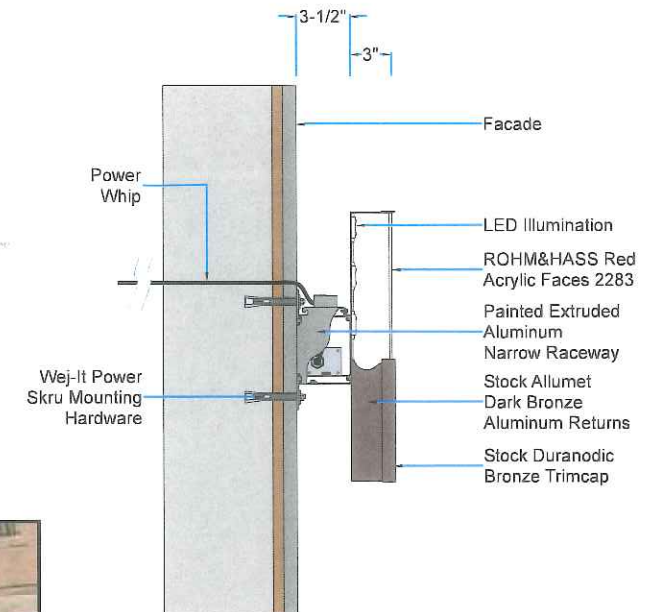
5-9/16" Raceway

Description:  
 (Qty: 1) Face illuminating channel letters.  
 \* Stock Allumet Dark Bronze aluminum returns  
 \* 3/16" Red #2283 Acrylic faces  
 \* Stock Duranodic Bronze trimcap  
 \* Internally wired L.E.D. illumination  
 \* Letters mounted to painted extruded aluminum narrow raceway

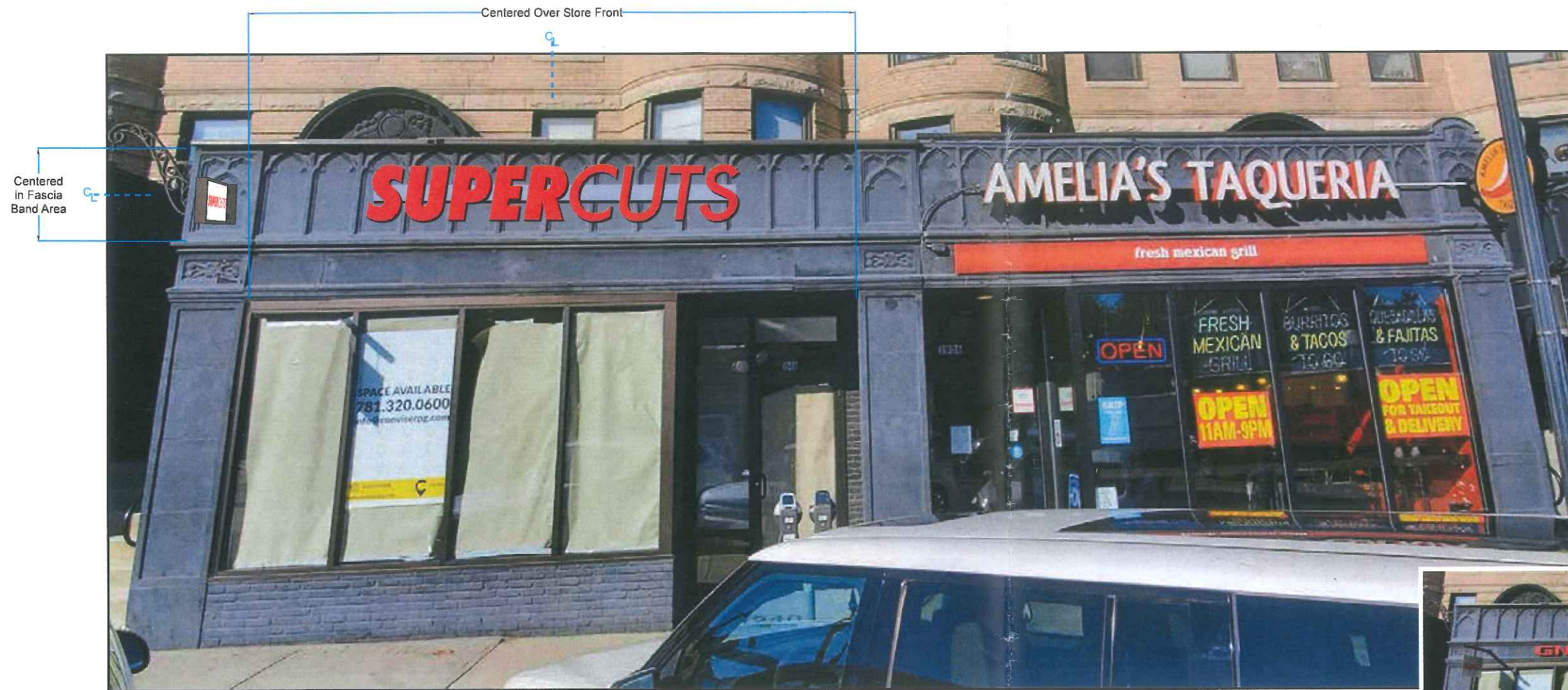
Typeface/Logo:  
 \* Art on File

Colors:  
 \* Returns - Stock Allumet Dark Bronze  
 \* Trimcap - Stock Duranodic Bronze #313  
 \* Faces - 3/16" ROHM&HASS Red Acrylic #2283  
 \* L.E.D.'s - ITL 1x3 Red  
 \* Raceway - Painted to match Fascia TBD

Installation:  
 \* By ViewPoint  
 \* Note: Power by Others  
 \* This sign is intended to be installed in accordance with the requirements of Article 600 of the National Electrical Code (NEC) and/or other applicable Local Electrical Codes (LEC). This includes proper grounding and bonding of the sign.



M1 Mounting Elevation



PE Photo Elevations: Proposed & Existing

Job:  
Supercuts

Account Manager:  
Jeff Kwass

Date:  
11.13.20 D.75

Revisions:  
11.13.20 D.25

Revisions:



**ViewPoint**  
SIGN AND AWNING

1.508.393.8200

FAX 1.508.393.4244

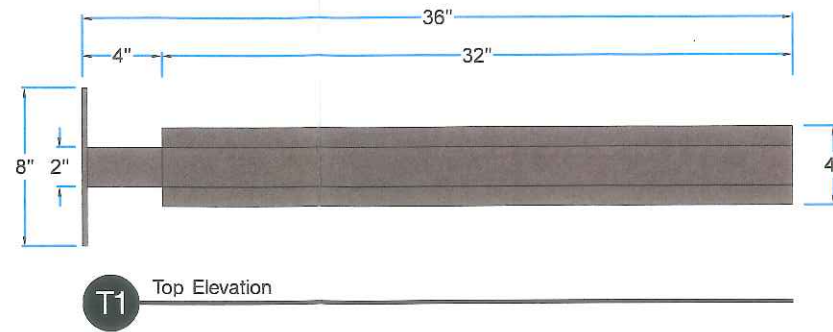
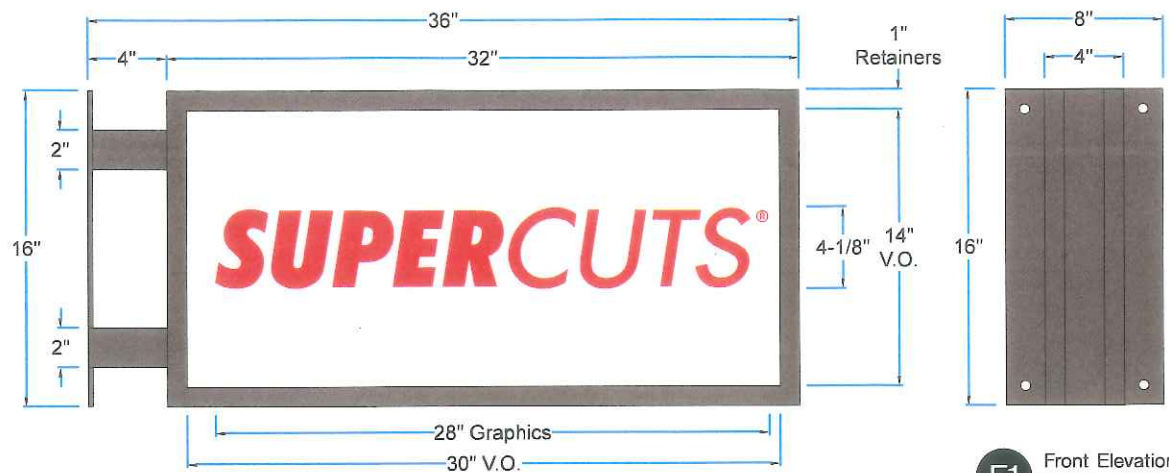
Customer Approval

Acct. Manager Approval

Production Approval

TBD





**Description:**  
 (Qty: 1) Double sided blade sign.  
 \* Welded aluminum Excellart extrusion  
 4" deep sign body and 1" retainers  
 \* 2" x 2" aluminum extension arms and  
 1/4" aluminum mounting plate  
 \* White Acrylic faces with surface applied  
 translucent vinyl graphics  
 \* LED illumination, power pack located  
 inside sign body

**Typeface/Logo:**  
 \* Art on File

**Colors:**  
 \* Sign Body - Painted AkzoNobel Dark Bronze 313-E  
 \* Plate - Painted AkzoNobel Dark Bronze 313-E  
 \* Ext. Arm - Painted AkzoNobel Dark Bronze 313-E  
 \* Faces - White Acrylic  
 \* LEDs - White  
 \* Vinyl Graphics - Tomato Red Arlon trans #43

**Installation:**  
 \* By ViewPoint  
 \* Note: Power by Others  
 \* This sign is intended to be installed in accordance  
 with the requirements of Article 600 of the National  
 Electrical Code (NEC) and/or other applicable Local  
 Electrical Codes (LEC). This includes proper grounding  
 and bonding of the sign.

**S1** Side Elevation: (Qty: 1) #11570.1 DF Illuminating Blade Sign  
 16" x 32" = 3.5 Sq. Ft.

**F1** Front Elevation

**T1** Top Elevation

Centered In Fascia Area

Mounting Plate at Same Height as Amelia's TBD



**PE** Photo Elevations: Proposed & Existing

Job: Supercuts  
 Account Manager: Jeff Kwass  
 Location: 1940 Beacon St., Brighton, MA  
 Date: 11.13.20 DI.25  
 Revisions: 11.13.20 D.5  
 Designer: Pete Rivera

**ViewPoint**  
 SIGN AND AWNING  
 1.508.393.8200  
 FAX 1.508.393.4244

Customer Approval \_\_\_\_\_  
 Acct. Manager Approval \_\_\_\_\_  
 Production Approval \_\_\_\_\_