



COPLEY

535 BOYLSTON STREET

EXISTING PHOTOS

535 Boylston Street
Boston, MA

ENTERPRISE REAL ESTATE
ARCHITECTURE + DESIGN



Renovation



EXISTING PHOTOS

535 Boylston Street
Boston, MA

ENTERPRISE REAL ESTATE
ARCHITECTURE + DESIGN



Renovation



TD BANK - 535 BOYLSTON ST. EXISTING PHOTOS



BOYLSTON ST. ELEVATION - FROM LEFT



BOYLSTON ST. ELEVATION - FROM RIGHT



BOYLSTON ST. ELEVATION - HEAD-ON



CLARENDON ST. ELEVATION - FROM OPPOSITE CORNER

FLOOR PLAN

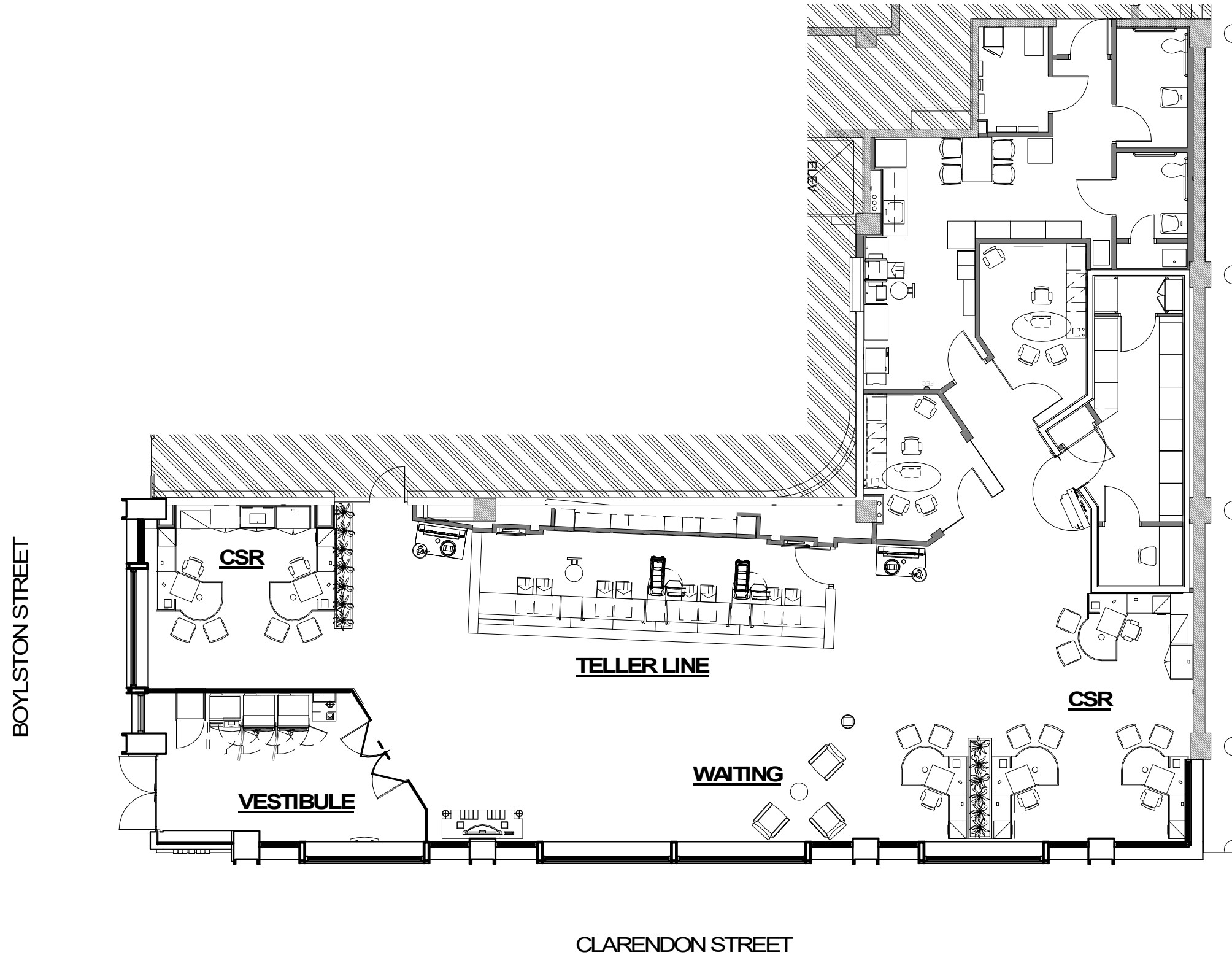
535 Boylston Street
Boston, MA

ENTERPRISE REAL ESTATE
ARCHITECTURE + DESIGN



Renovation

*INSTALL NEW STORYBOARD IN VESTIBULE DESCRIBING TD BANK SUPPORT FOR LOCAL ARTIST ORGANIZATIONS



Renovation

REPLACE EXISTING SIGN WITH
ILLUMINATED TD SHIELD - 10 SF

NEW INTERNALLY ILLUMINATED
SHIELD WITH NON-ILLUMINATED
METAL CLADDING AT SIDES
BEYOND SIGN (SEE FINISH NOTE
BELOW) - 14.6 SF EACH FACE

METAL PANEL CLADDING BY
ALPOLIC - 2" THICK PANELS IN TD
GREEN (PMS-361) @ SIDES
& SOFFIT OF ENTRY CORNER

NEW VINYL WINDOW GRAPHICS
HIGHLIGHTING LOCAL BOSTON
ARTISTS (ACTUAL ART &
ARTISTS TBD)



Renovation

REPLACE EXISTING SIGN WITH
ILLUMINATED TD SHIELD - 10 SF

NEW INTERNALLY ILLUMINATED
SHIELD WITH NON-ILLUMINATED
METAL CLADDING AT SIDES
BEYOND SIGN (SEE FINISH NOTE
BELOW) - 14.6 SF EACH FACE

METAL PANEL CLADDING BY
ALPOLIC - 2" THICK PANELS IN TD
GREEN (PMS-361) @ SIDES
& SOFFIT OF ENTRY CORNER

NEW VINYL WINDOW GRAPHICS
HIGHLIGHTING LOCAL BOSTON
ARTISTS (ACTUAL ART
AND ARTISTS TBD)



Renovation

REPLACE EXISTING SIGN WITH
ILLUMINATED TD SHIELD - 10 SF

METAL PANEL CLADDING BY
ALPOLIC - 2" THICK PANELS IN TD
GREEN (PMS-361) @ SIDES
& SOFFIT OF ENTRY CORNER

NEW INTERNALLY ILLUMINATED
SHIELD WITH NON-ILLUMINATED
METAL CLADDING AT SIDES
BEYOND SIGN (SEE FINISH NOTE
BELOW) - 14.6 SF EACH FACE

NEW VINYL WINDOW GRAPHICS
HIGHLIGHTING LOCAL BOSTON
ARTISTS (ACTUAL ART AND
ARTISTS TBD)



Renovation

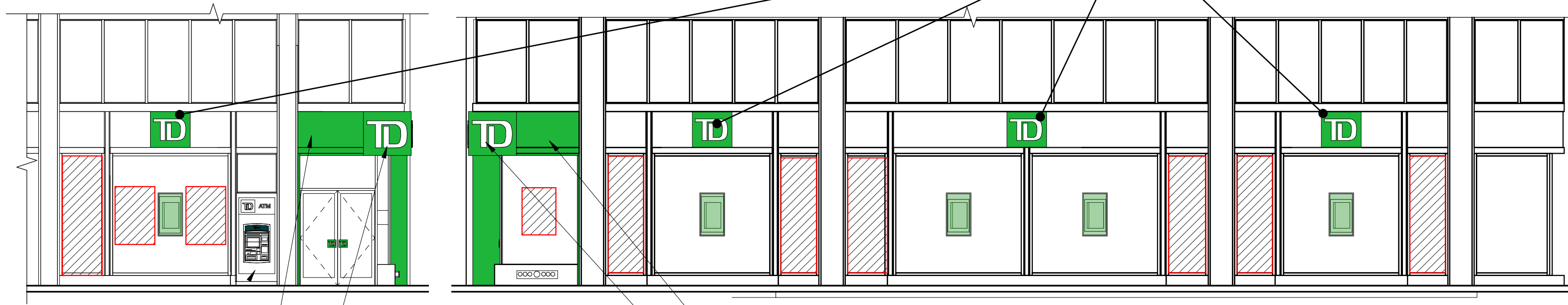
*INSTALL NEW STORYBOARD IN VESTIBULE DESCRIBING TD BANK SUPPORT FOR LOCAL ARTIST ORGANIZATIONS

NOTES:



HATCHING REPRESENTS MAXIMUM ALLOWABLE WINDOW GRAPHIC AREA & IS NOT SUGGESTIVE OF ART PLACEMENT.

LOCATION OF EXISTING MARKETING POSTERS SUBJECT TO CHANGE DEPENDENT ON POSITION OF ART.



NEW INTERNALLY ILLUMINATED TD SHIELD WALL SIGN (10sf) TO REPLACE EXISTING SIGN

METAL PANEL CLADDING - ALPOLIC
2" THICK PANELS IN TD
(PMS-361) @ SIDES & SOFFIT OF ENTRY CORNER

NEW INTERNALLY ILLUMINATED CORNER SHIELD (14.6sf)

METAL PANEL CLADDING - ALPOLIC
2" THICK PANELS IN TD GREEN
(PMS-361) @ SIDES & SOFFIT OF ENTRY CORNER

NEW INTERNALLY ILLUMINATED CORNER SHIELD (14.6sf)

COMMUNITY ART - WINDOW GRAPHICS INSTALLATION

Artists for Humanity knows what it means to be *Unexpectedly Human*.

Their art is bold, beautiful and a celebration of the diverse arts culture that calls Boston home. TD Bank plans to partner with AFH (or a similar organization) to give our windows the gallery treatment, lending exposure to local young artists on a rotating basis, or even creating a mural reflecting the diverse nature of our Boston neighborhoods.



OUR MISSION

Artists For Humanity (AFH) provides under-resourced teens the keys to self-sufficiency through paid employment in art and design. AFH is built on the philosophy that engagement in the creative process is a powerful force for social change, and that creative entrepreneurship is a productive and life-changing opportunity for young people. Bridging economic, racial, and social divisions, AFH enriches urban communities by introducing young people's creativity to the business community. Below are some examples from the **'Voices of the Future'** collection:



**please note, images are representational only - actual art for the TD windows is TBD*