

# Interpretive History Display and Architectural Reuse Plan

prepared for the Boston Landmarks Commission  
by Boston Children's Hospital  
January 2021



# Introduction

As part of its obligation to the Boston Landmarks Commission laid out in the Memorandum of Agreement in 2015 between the BLC and Boston Children's Hospital regarding the building of a new clinical building (now known as the Hale Family Building), BCH agreed to develop and fund an Interpretive History Exhibit.

The exhibition would highlight the history and accomplishments of the Hospital, its predecessor, the Rotch Memorial Hospital for Infants, and the Harvard School of Public Health (as related to the period of its occupancy of the Wolbach Building) and the significance of the achievements of the Hospital and these institutions in pediatric medicine and the field of public health.

Boston Children's Hospital now presents its design development plans for this Interpretive History Exhibit for the BLC's review and approval. BCH also includes previously approved plans for the incorporation of architectural elements into the interior and exterior of the building.

BCH anticipates that the Interpretive History Exhibit will open to the public concurrently with the Hale Building in June of 2022.



# Boston Children's A to Z

Interpretive History Exhibit

Where the world comes for answers



# Boston Children's: A to Z

## An Interpretive History Exhibit

- Is an object-based exhibit highlighting objects from Boston Children's Hospital archives
- Tells the stories of BCH's achievements in pediatric medicine
- Honors the Wolbach Building by telling the history of the Infant's Hospital and the Harvard School of Public Health, which were formerly housed in that building
- Engages adults and children and invites them to learn about science and medicine
- Offers additional information on a virtual platform for more in-depth information on certain topics

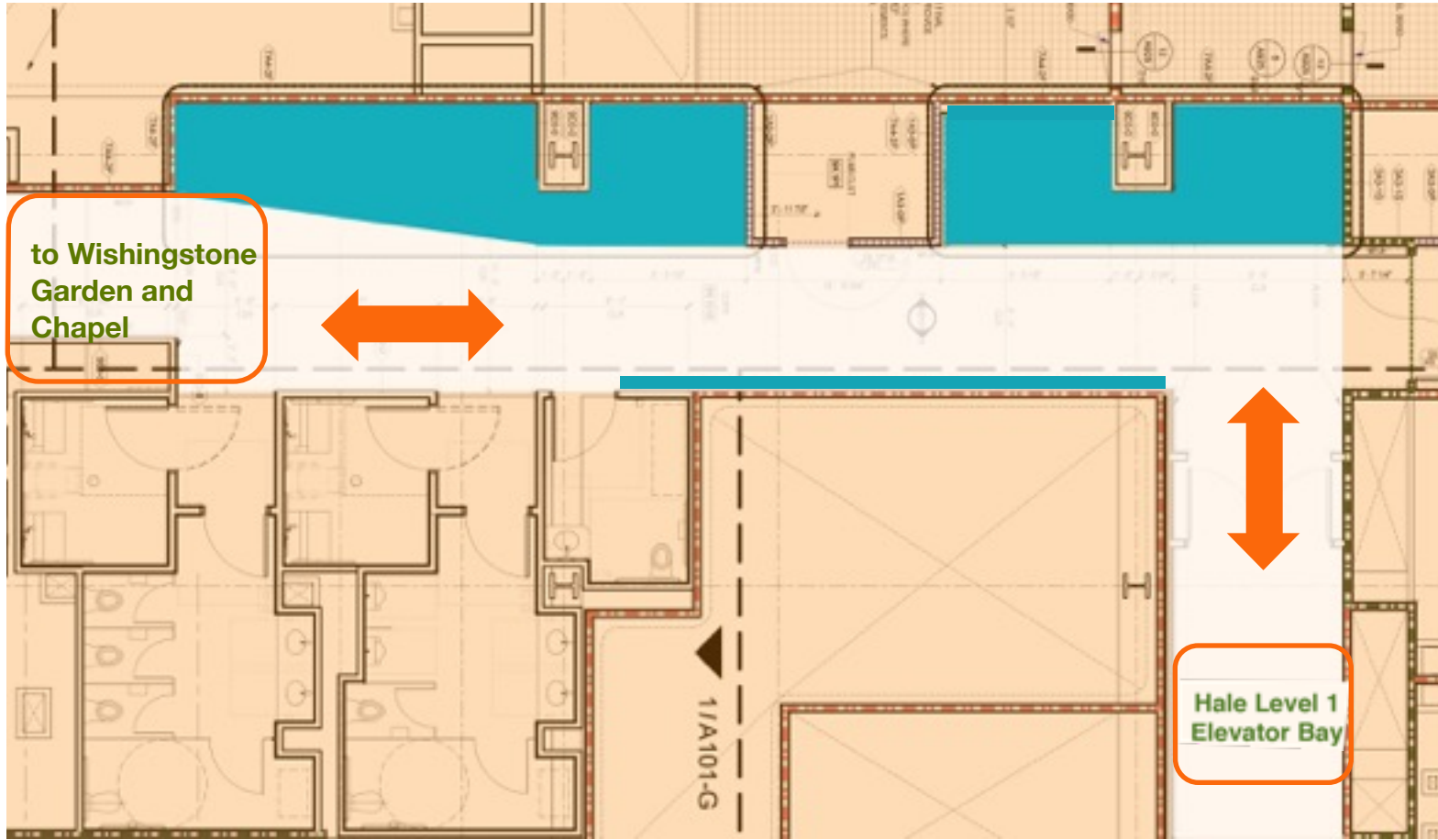




The Exhibit will be located on the first floor of the new Hale Building on the main campus of Boston Children's Hospital at 300 Longwood Avenue.







The Exhibit area, shown on this floor plan in teal, will be in a prominent corridor leading from the main public elevators in the Hale Building to the Chapel and the Wishingstone outdoor garden.



This corridor is open and accessible to the public. The location was previously reviewed and approved by the BLC.

The length of the exhibit is 65 linear feet.

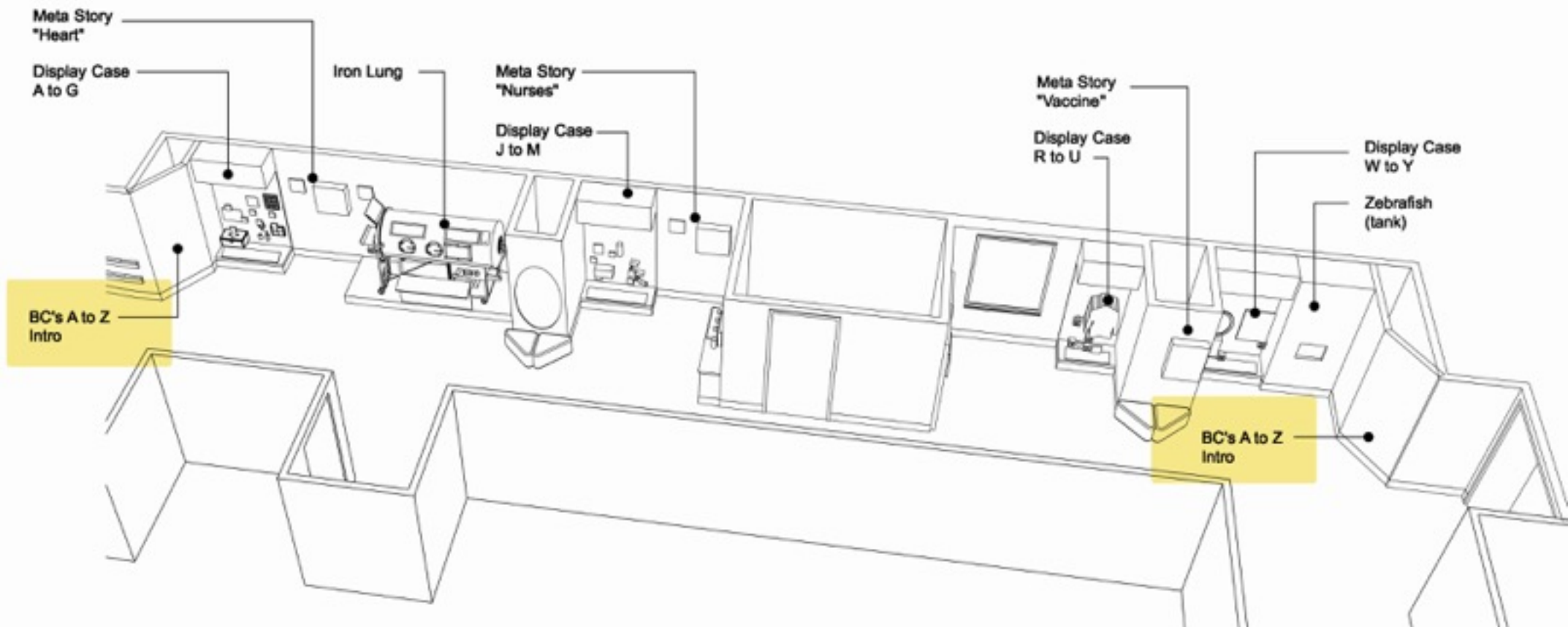


The exhibit will feature one object for each letter of the alphabet, each representing an important Boston Children’s story.

The significance of the Wolbach Building will be represented by the stories of the programs that were formerly housed in the Wolbach Building—namely the Infant’s Hospital and the Harvard School of Public Health.

Boston Children's A to Z: Objects + Stories					
Ltr	Object	Word	Story	Object	Dimensions (H x W x D)
A	Alms box	Alms box	Founded through charity		6.75" x 13" x 9"  7" x 16" x 10.25"
Z	Zebrafish tank	Zebrafish	Stem cell research		tbd





The flow of the exhibition will be from left to right, beginning with an alms box and ending with a live display of *Casper* zebrafish that were developed for research at Boston Children's.







(#)

Where the world comes for answers



Below is an example of how the captions will be written. We are intentionally keeping the content accessible at a 5th grade reading level.



**Alms Box** | Since day one, our patients have benefited from the kindness of strangers. Donors gave \$25,325 to open the hospital. Coins dropped into this alms box continued the tradition of giving. So did other early gifts—from turnips and cod liver oil to ice cream and a pair of tame rabbits!





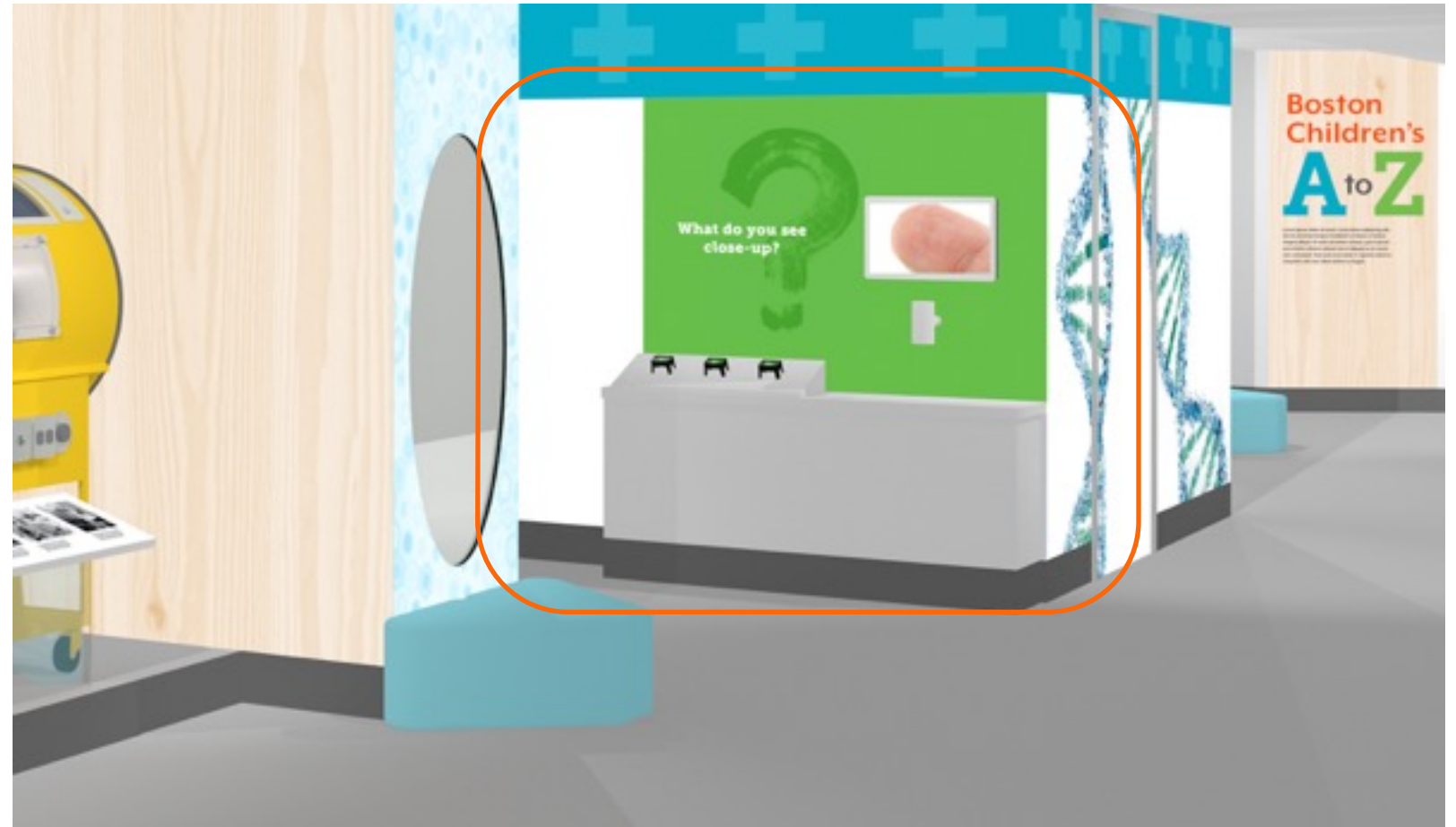
Metastory Panel Layouts | Scale: 1" = 1'-0"

We will also be telling three “metastories” unique to Boston Children’s: the story of the first pediatric surgical heart repair; our nursing program; and our contributions to the history of vaccines.

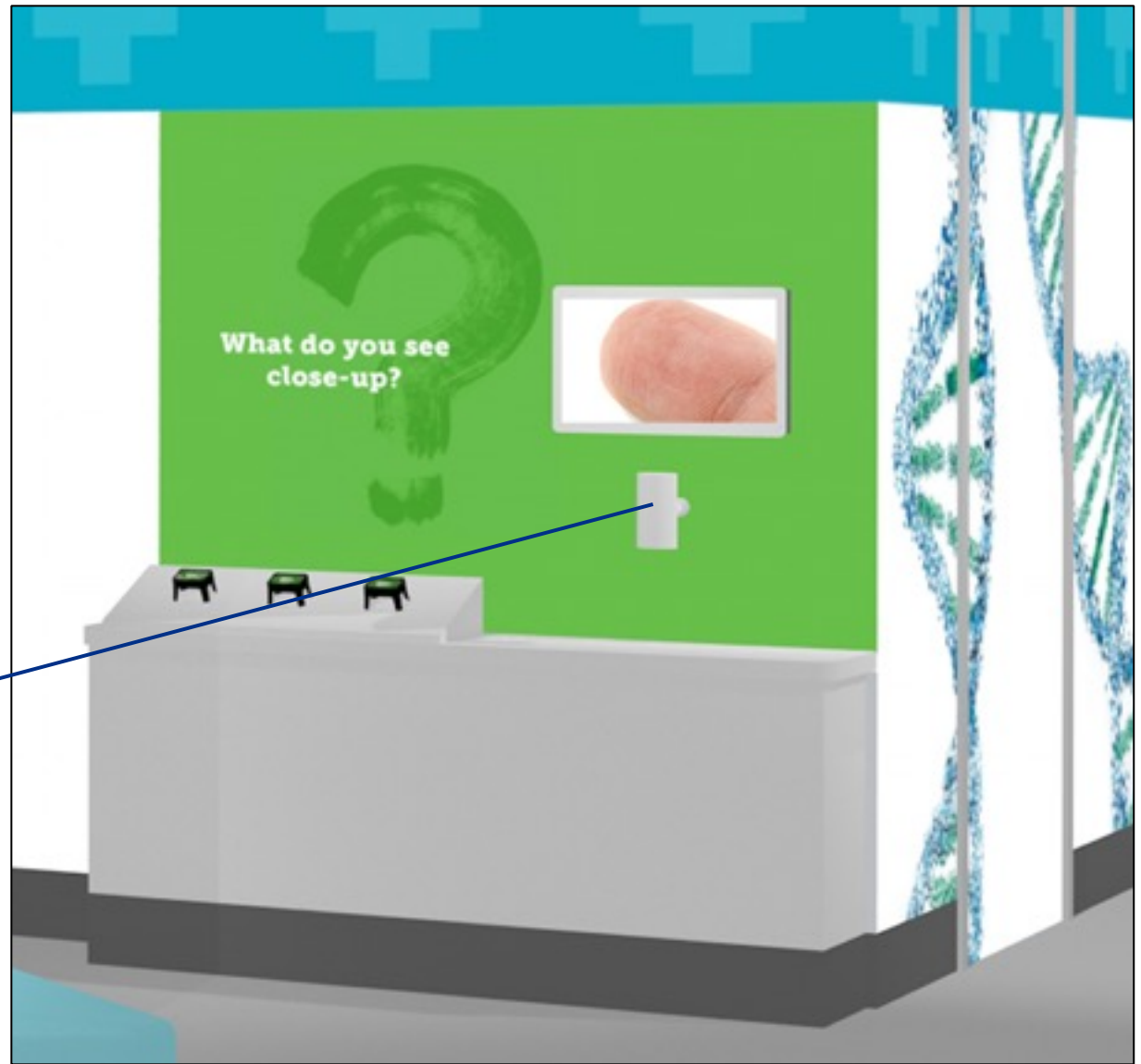
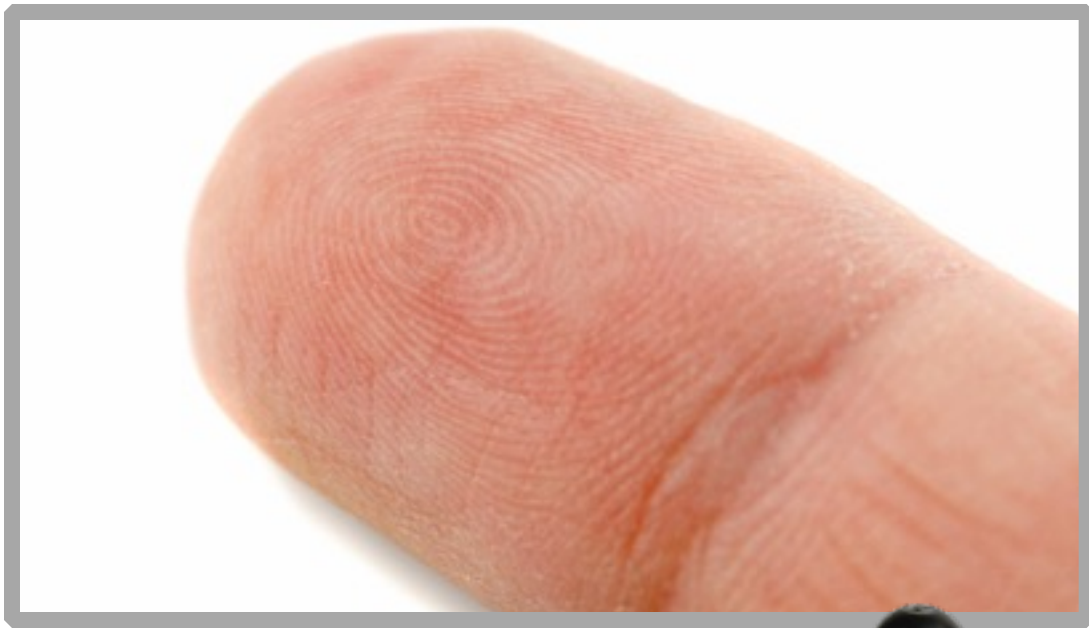


A special “What Do You See Close Up?” display will invite visitors to examine objects under magnification and watch loops of various types of cells and organisms.

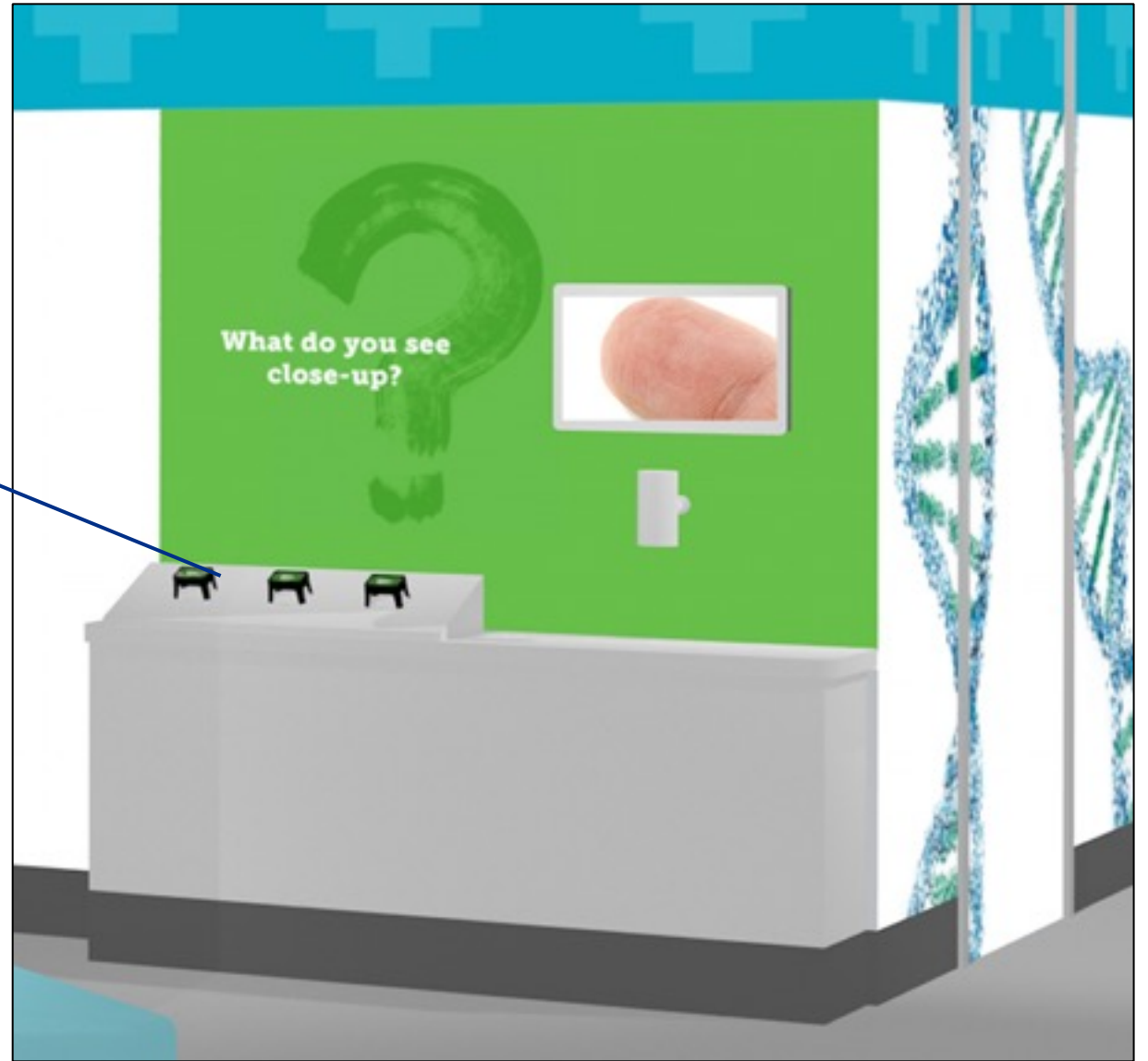
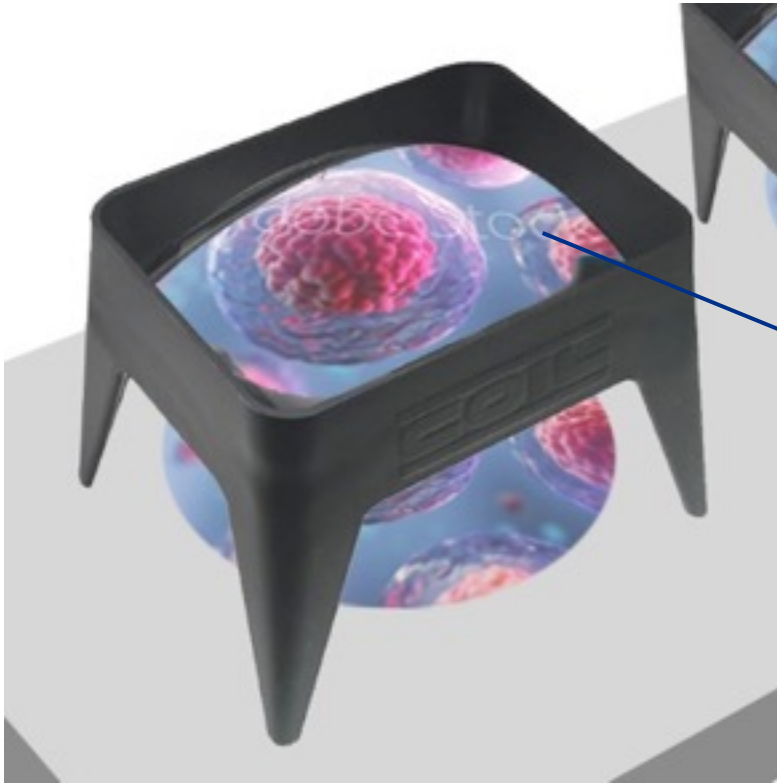
This type of close observation—key to scientific research—is a theme of the exhibit.











Where the world comes for answers



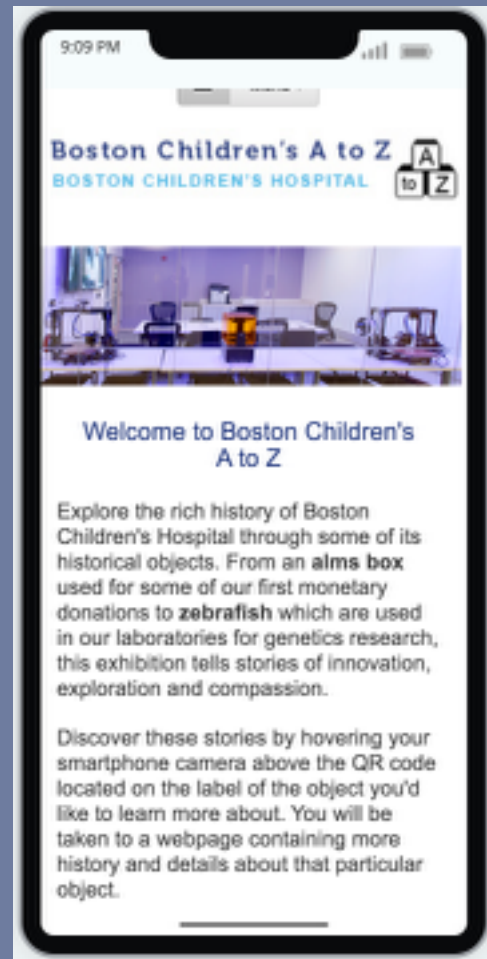
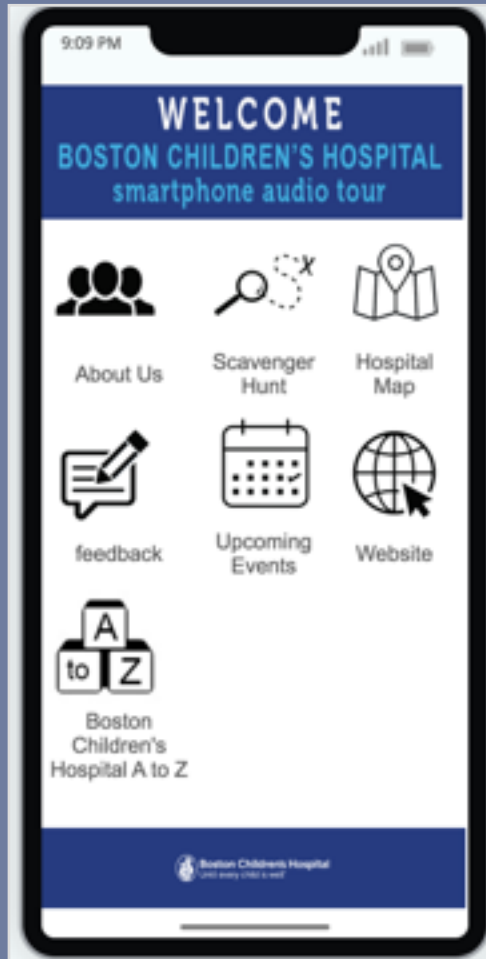
# Complete list of objects

	Object	Word	Story
A	Aims box	Aims box	Founded through donations, a tradition of generosity that continues
B	Assisted communications device (Picture Board)	Picture BOARD	Augmentative communications and international impact
C	Curious George Goes to the Hospital	Curious George	Child Life - play lady; BCH as source for beloved book
D	EEG printout of REM sleep, plus first edition of Ferber's book	Dream	Sleep Center and "Ferberizing"
E	Ether mask and bottles	Ether	Pediatric anesthesia
F	Objects ENTs have removed from kids' ears, noses & throats	Foreign bodies	Otolaryngology
G	Farber Glass Lantern Slides + Projector	Glass lantern slides	Chemotherapy
H	Metastory— Photos + pillow	Heart	Heart
I	Iron lung	Iron lung	Polio
J	Johnny Goes to the Hospital	Johnny	Caring hospital, even before admission
K	Berry Brazelton's newborn assessment kit	Assessment KIT	Dr. Brazelton & newborn behavioral assessment
L	Leg braces	Leg braces	Orthopedics
M	Pap boat and milk lab spoons	Milk boat	Milk lab and Infant's Hospital
N	Metastory—photos + artifact	Nurses	Nursing
O	Organ-on-a-chip	Organ-on-a-chip	Organ-on-a-chip (BCH holds first patent)
P	Hydroxyurea pill bottle	Pill bottle	Sickle cell disease

	Object	Word	Story
Q	Folkman whiteboard	Questions	Angiogenesis
R	Respiratory therapy patch	Respiratory therapy patch	Lung disease, with emphasis on surfactant
S	3D-printed models	Surgical models	Surgery and SIM program
T	Baby teeth	Baby TEETH	Lead poisoning
U	House officer's uniforms	Uniforms	Training
V	Metastory—photos	Vaccines	Vaccines
W	Wheatstone bridge + flask of water	Water	Dehydration (Gamble and electrolytes)
X	X-Ray	X-Rays	Radiology
Y	Mirror	You	Diversity, international reach, demographics
Z	Zebrafish tank or model of transparent fish	Zebrafish	Stem cell research



# Guide by Cell



We will be using a Cloud-based platform that can be accessed on a smart phone or tablet to augment the information presented in the captions.

This technology will allow us to delve more deeply into the rich history of Boston Children's Hospital.



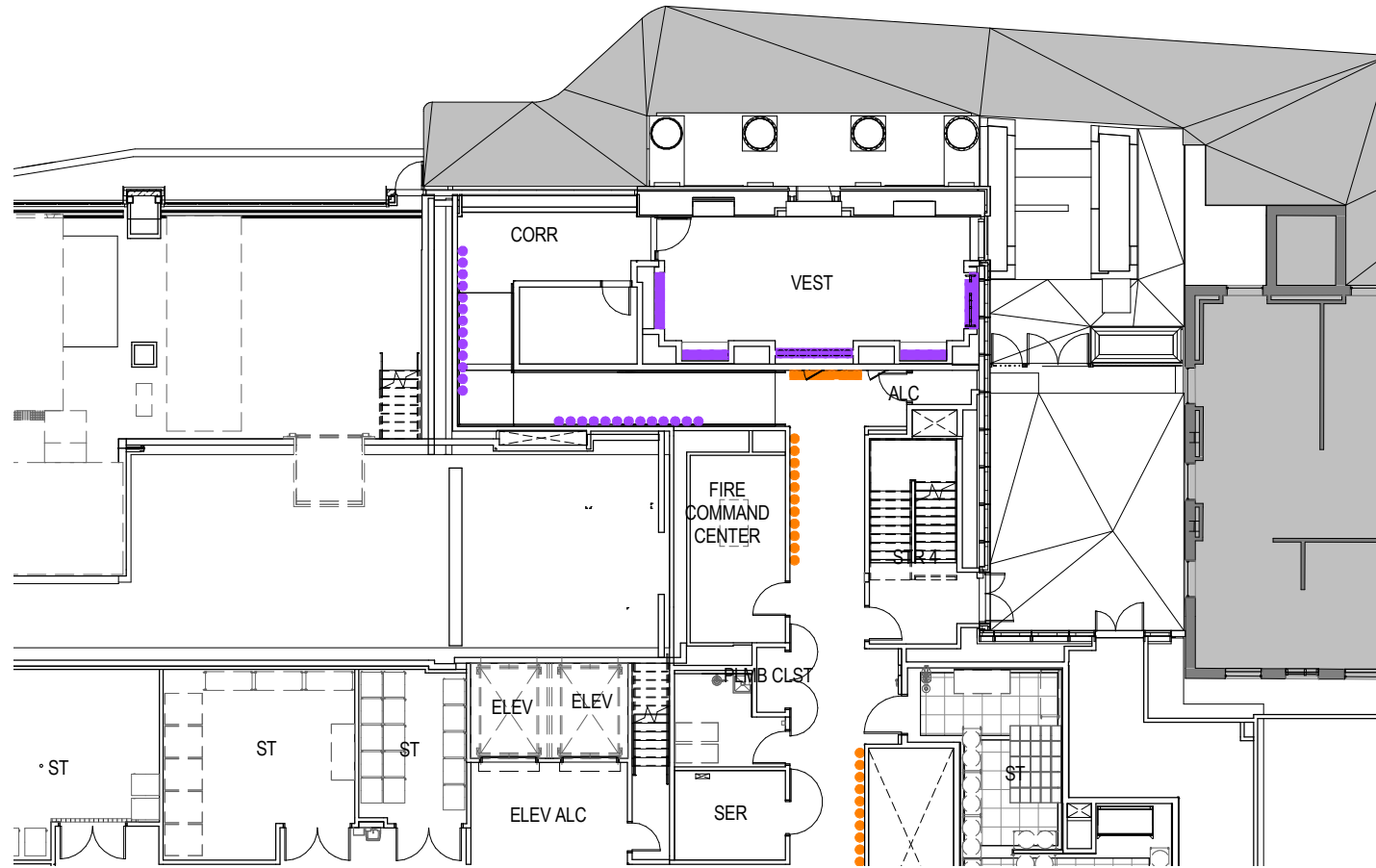
# Architectural Reuse

Wolbach Vestibule and Exterior Portico

Where the world comes for answers



# Wolbach Vestibule



Level 1

The Wolbach Vestibule will also be located on level 1, just down the corridor from the Interpretive History Exhibit.

It will house several large artifacts preserved from the Wolbach Building.

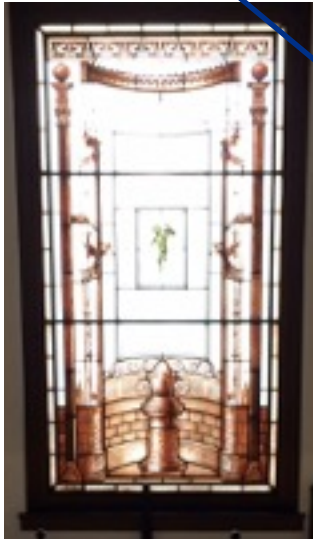
Explanatory text about the use of Wolbach building and the artifacts will be displayed.



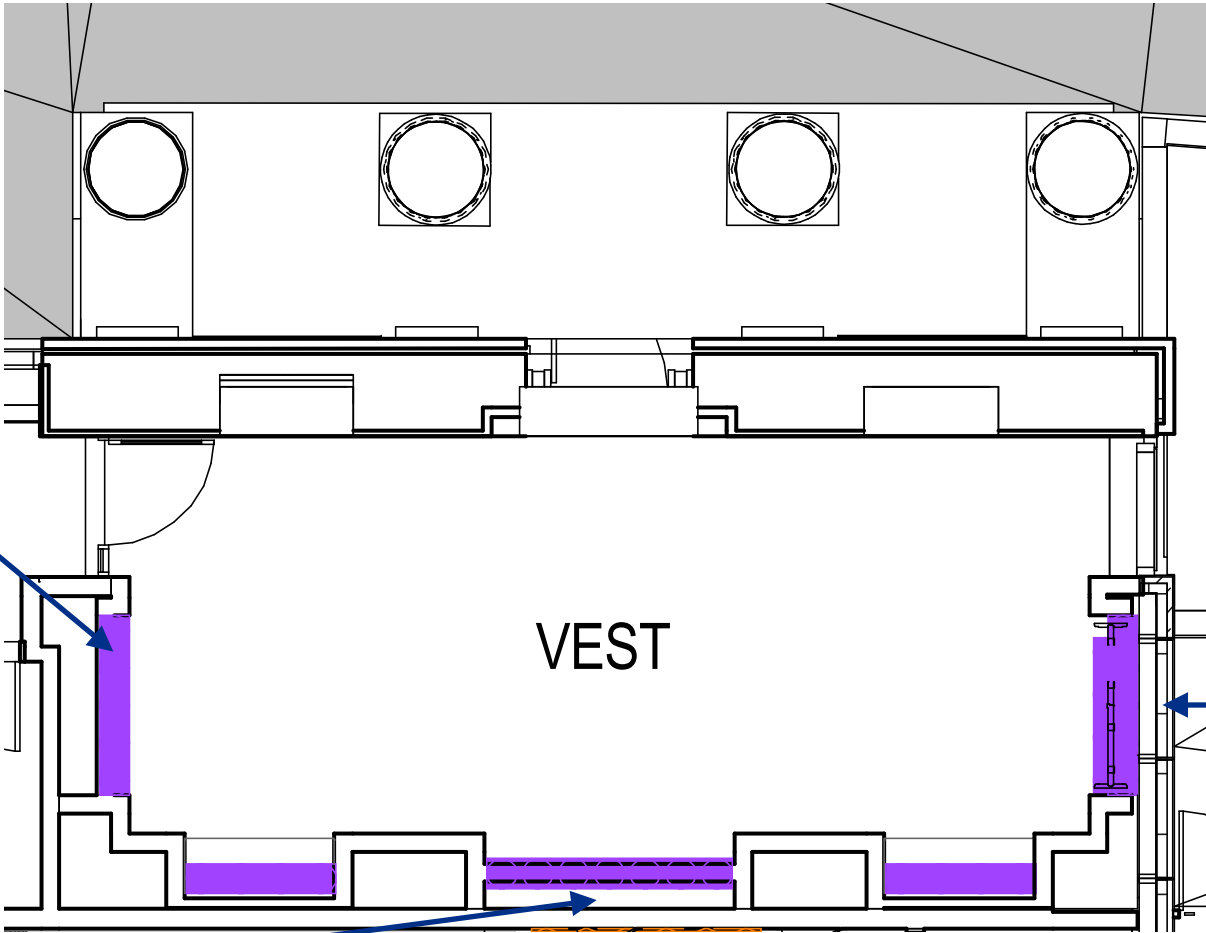


# Shattuck Street Entrance

Potential Time Capsule location



Stained glass window



Bronze doors



# Exterior—Shattuck Street Entrance



The exterior facade of the Hale Building on Shattuck Street will incorporate additional elements preserved from the Wolbach Building, including the portico, bronze lanterns and a pendant lamp.

Reconstructed portico

Refurbished bronze lanterns



Pendant lamp



end of presentation

Where the world comes for answers

