

# WEST NEWTON STREET AND RUTLAND STREET APARTMENTS

62-64 RUTLAND STREET,  
BOSTON (SOUTH END)

SOUTH END LANDMARK DISTRICT COMMISSION HEARING  
PRESENTATION



AUGUST 4, 2020

**EXTERIOR HANDRAIL DETAILS (SKA-40A, SKA-40B, SKA-40C)**

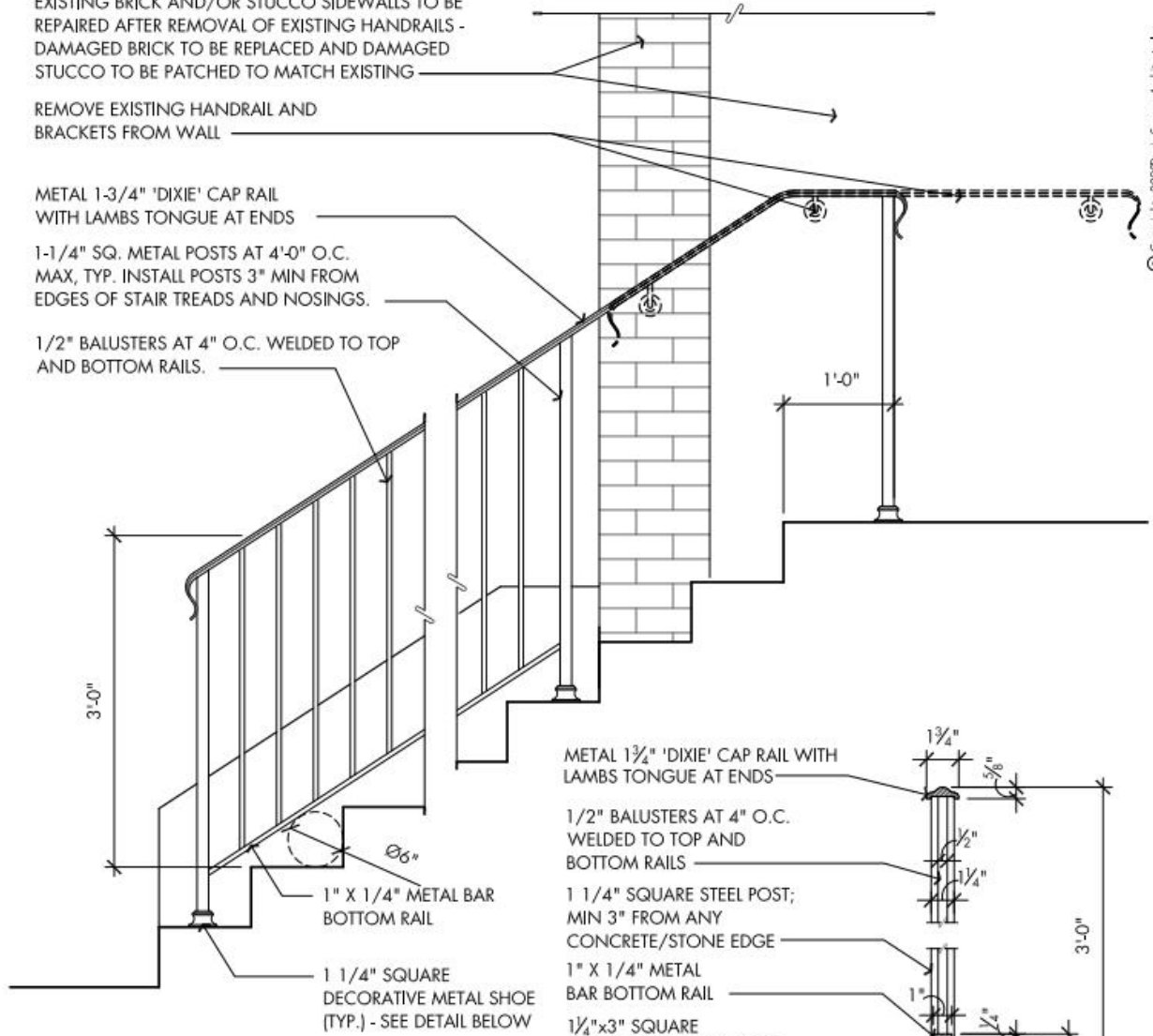
EXISTING BRICK AND/OR STUCCO SIDEWALLS TO BE REPAIRED AFTER REMOVAL OF EXISTING HANDRAILS - DAMAGED BRICK TO BE REPLACED AND DAMAGED STUCCO TO BE PATCHED TO MATCH EXISTING

REMOVE EXISTING HANDRAIL AND BRACKETS FROM WALL

METAL 1-3/4" 'DIXIE' CAP RAIL WITH LAMBS TONGUE AT ENDS

1-1/4" SQ. METAL POSTS AT 4'-0" O.C. MAX, TYP. INSTALL POSTS 3" MIN FROM EDGES OF STAIR TREADS AND NOSINGS.

1/2" BALUSTERS AT 4" O.C. WELDED TO TOP AND BOTTOM RAILS.



STAIR / RAILING SECTION DETAIL  
SCALE: 3/4" = 1'-0"

METAL 1 3/4" 'DIXIE' CAP RAIL WITH LAMBS TONGUE AT ENDS

1/2" BALUSTERS AT 4" O.C. WELDED TO TOP AND BOTTOM RAILS

1 1/4" SQUARE STEEL POST; MIN 3" FROM ANY CONCRETE/STONE EDGE

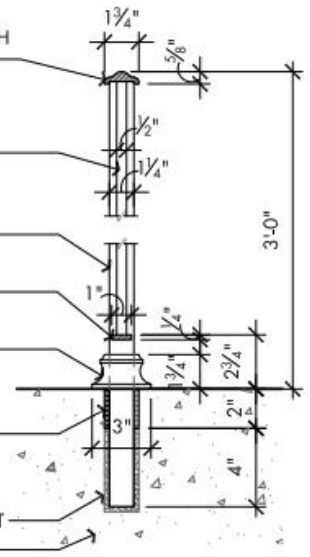
1" X 1/4" METAL BAR BOTTOM RAIL

1 1/4" SQUARE DECORATIVE METAL SHOE (TYP.) - SEE DETAIL BELOW

3/8" COMPRESSIBLE FILLER JOINT AT ALL SIDES, TYP EACH POST.

3/8" NON-SHRINK GROUT AT ALL SIDES AND BOTTOM OF COLUMN BASE, TYP. EACH POST

STAIR/STAIR LANDING



ENLARGED RAILING SECTION DETAIL  
SCALE: 1 1/2" = 1'-0"



**DAVIS  
SQUARE  
ARCHITECTS**

240A Elm St  
Somerville, MA 02144  
617 628 5700  
www.davisquarearchitects.com

Project  
**WEST NEWTON RUTLAND APARTMENTS**

Title  
**EXTERIOR FRONT RAILING DETAIL**

Scale  
**AS NOTED**

Project No.  
**16015**

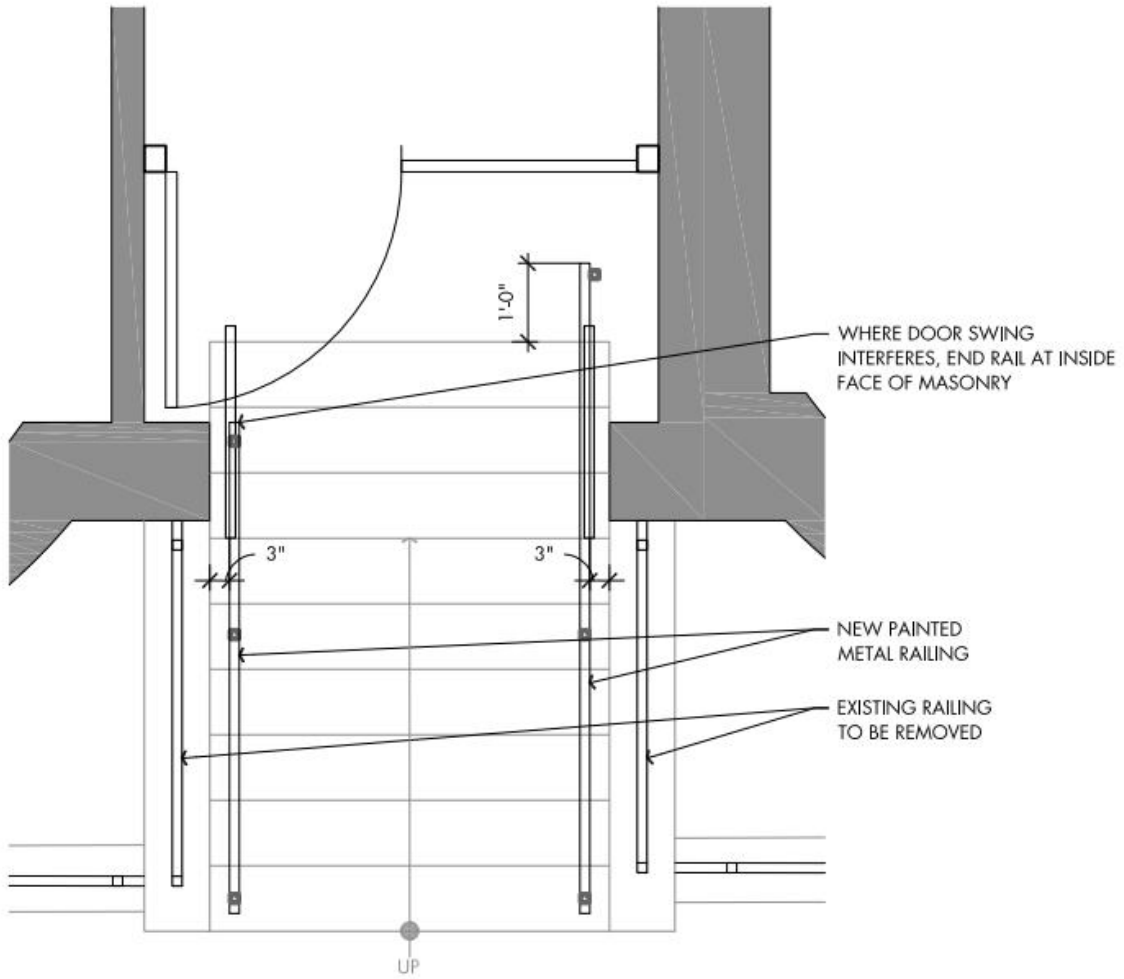
Drawing Reference  
**A300**

Date  
**03/10/2020**

Sheet No.

**SKA  
40A  
(AS1-021)**

I:\SKA\SKA\16015-WNR\_SKA-40.dwg



**DAVIS  
SQUARE**  
ARCHITECTS

240A Elm St  
Somerville, MA 02144  
617 628 5700  
www.davisquarearchitects.com

Project		WEST NEWTON RUTLAND APARTMENTS		Sheet No.	
Title		EXTERIOR FRONT RAILING - PLAN AT SHORT TOP LANDING		SKA-40C	
Drawing Reference				(ASI 021)	
Scale	Project No.	Date			
1/2"=1'-0"	16015	03/10/2020			
G:\SKA\SKA\16015\WNR_SKA-40.dwg					



## **STRONGCOTE SC-11 PRODUCT DATA SHEETS**

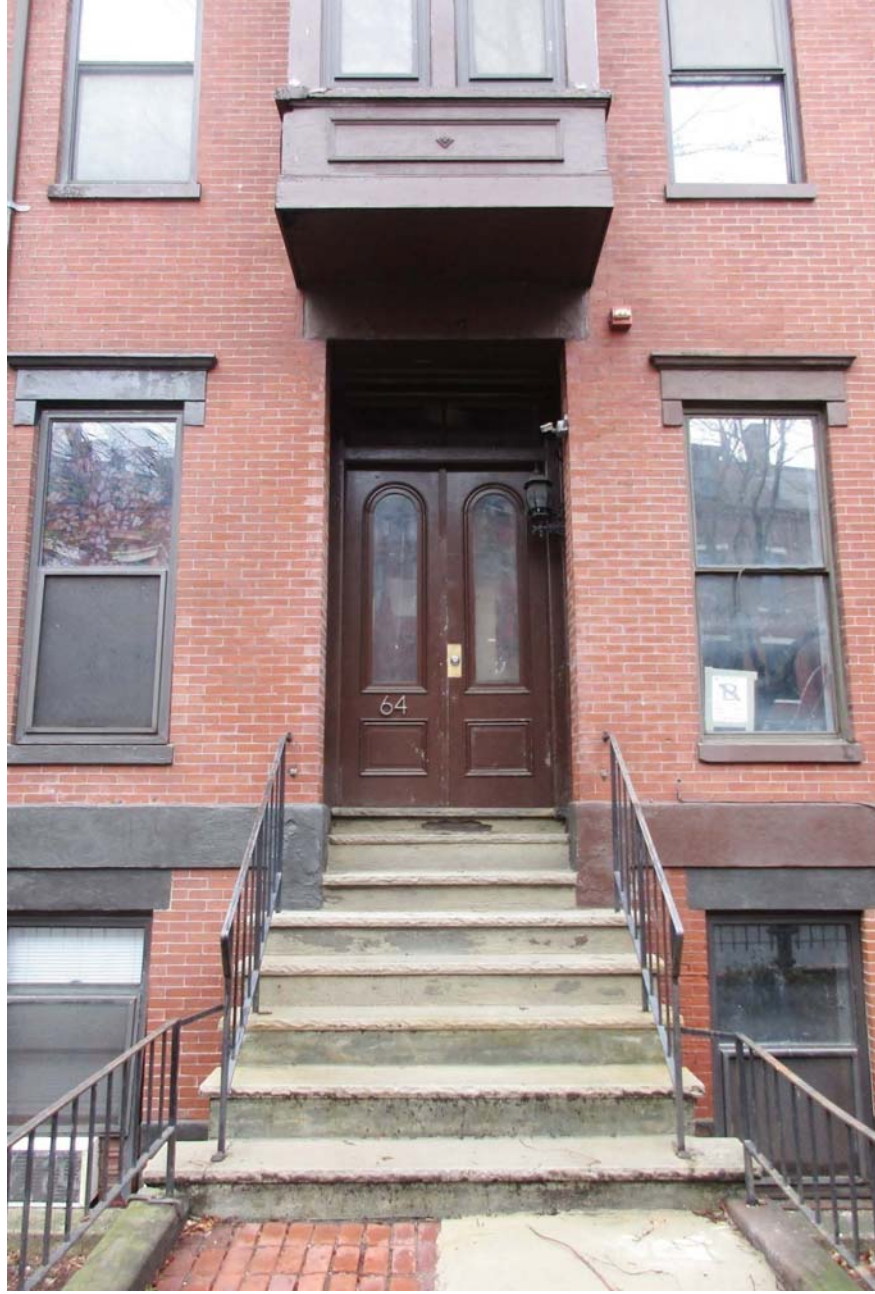
---

## EXISTING CONDITION PHOTOGRAPHS

---



1. 62 Rutland Street



2. 64 Rutland Street