

# WELCOME!

## Improvements to Copley Square Community Meeting 3

*We will get started soon.*

*This meeting is being  
recorded.*

*To promote a community  
feel, we'd like to see you if  
you are comfortable putting  
your video on! Please keep  
your microphone on mute  
if you are not speaking to  
minimize background noise.*

# Have A Question?

## JOINING BY WEB (Computer, Tablet, etc):



Raise Hand

Click to raise  
your hand



Q + A

Click to type  
your questions



Microphone

Click to mute  
or unmute



Video

Click to show  
or hide your  
video

## JOINING BY PHONE (Dial):

Press \*9 to raise your hand

Press \*6 to unmute/mute yourself

# Participate in Live Polling

## JOINING BY PHONE:

Text SASAKIPOLLS to 22333  
to join the session.

## JOINING BY WEB:

Navigate to  
[pollEV.com/sasakipolls](http://pollEV.com/sasakipolls)

A stylized illustration of Copley Square Park. On the left, there are several trees with green and yellow foliage. In the background, a large, detailed illustration of a Gothic-style cathedral with multiple spires and a central cross is visible. The scene is set against a light blue background with a subtle grid pattern. The foreground is a solid red color.

*Improvements to*  
**COPLEY SQUARE PARK**

**COMMUNITY MEETING 3**  
**APRIL 14TH, 2021**

**BOSTON PARKS AND RECREATION**

**SASAKI**





# AGENDA

## **Part 1: Presentation** (30 minutes)

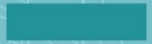
- Introduction and Process
- Conceptual Foundations
- Refined Concept

## **Part 2: Small Group Q & A** (15 minutes)

*Breakout groups to ensure that everyone has a chance to have their questions answered and initial thoughts heard*

## **Part 3: Live Polling** (15 minutes)

# Introduction + Process

The background is a solid teal color. Overlaid on this are white line-art illustrations. On the left, there are several trees of varying sizes and shapes. In the center and right, there is a large, detailed illustration of a Gothic-style building with multiple spires, a central cross, and arched windows. The overall aesthetic is clean and modern.

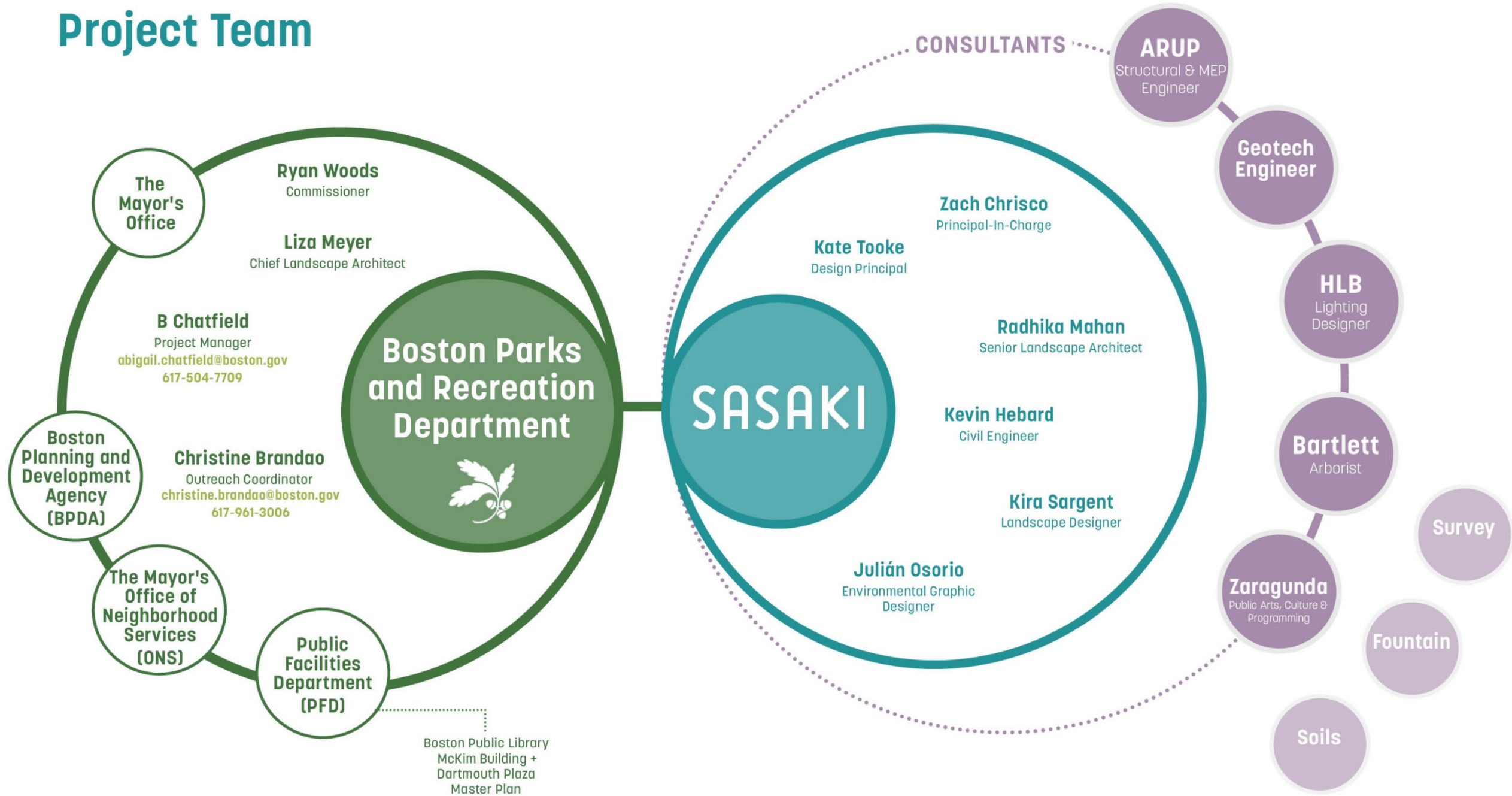


# Copley Square Revitalization



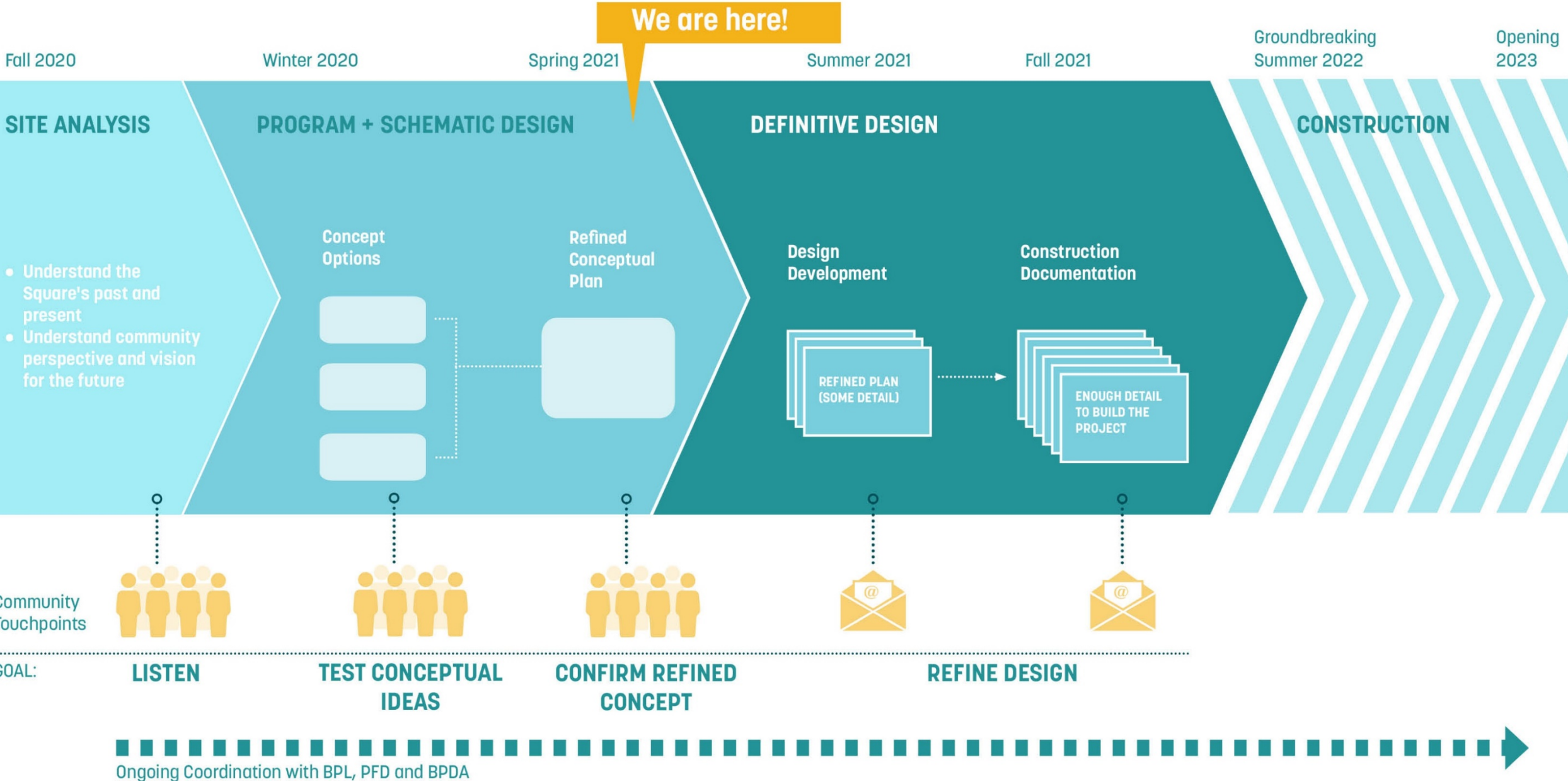


# Project Team





# Project Schedule | The Design Process





# WORKSHOP GOALS

**The city and the design team want to hear from you.**

**We'll share what we've heard so far and the refined design.**

**We hope that you:**

- ▶ Learn more about what the community values about the Square and consensus points on the community's vision
- ▶ Express your thoughts on what works in the refined design scheme, and what would need improvement
- ▶ Share your excitement about the future of Copley Square with others who might want to express their opinions





# Conceptual Foundations

---

A Contemporary Vision grounded in History,  
Culture and Community Voice

# More than a Century of Design Evolution, Similar Themes to Today

## 1880s - 1960s

Two green triangles bisected by Huntington Ave

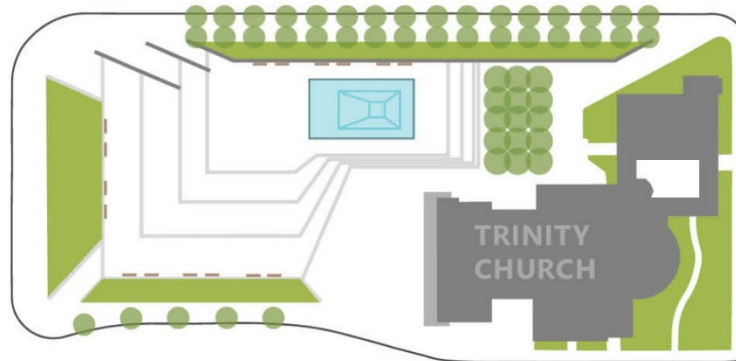


### KEY DESIGN AND PLANNING VISION

An Arts-focused Square,  
framed by cultural institutions

## 1960s - 1980s

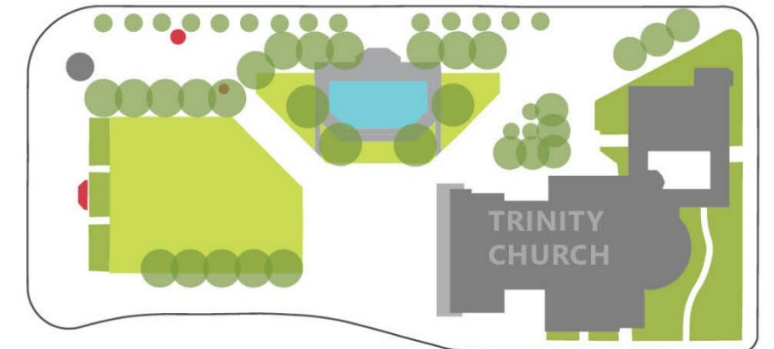
Mid-Century Style Sunken Piazza with Fountain



Angles to balance the  
architecture, a sense of enclosure

## 1980s - PRESENT

Level Plaza with Lawn and Fountain with a Classic Feel



A quiet and calm community  
"living room" with active edges



# Why renovate today?

*Update a much-loved urban square to 21st Century standards*

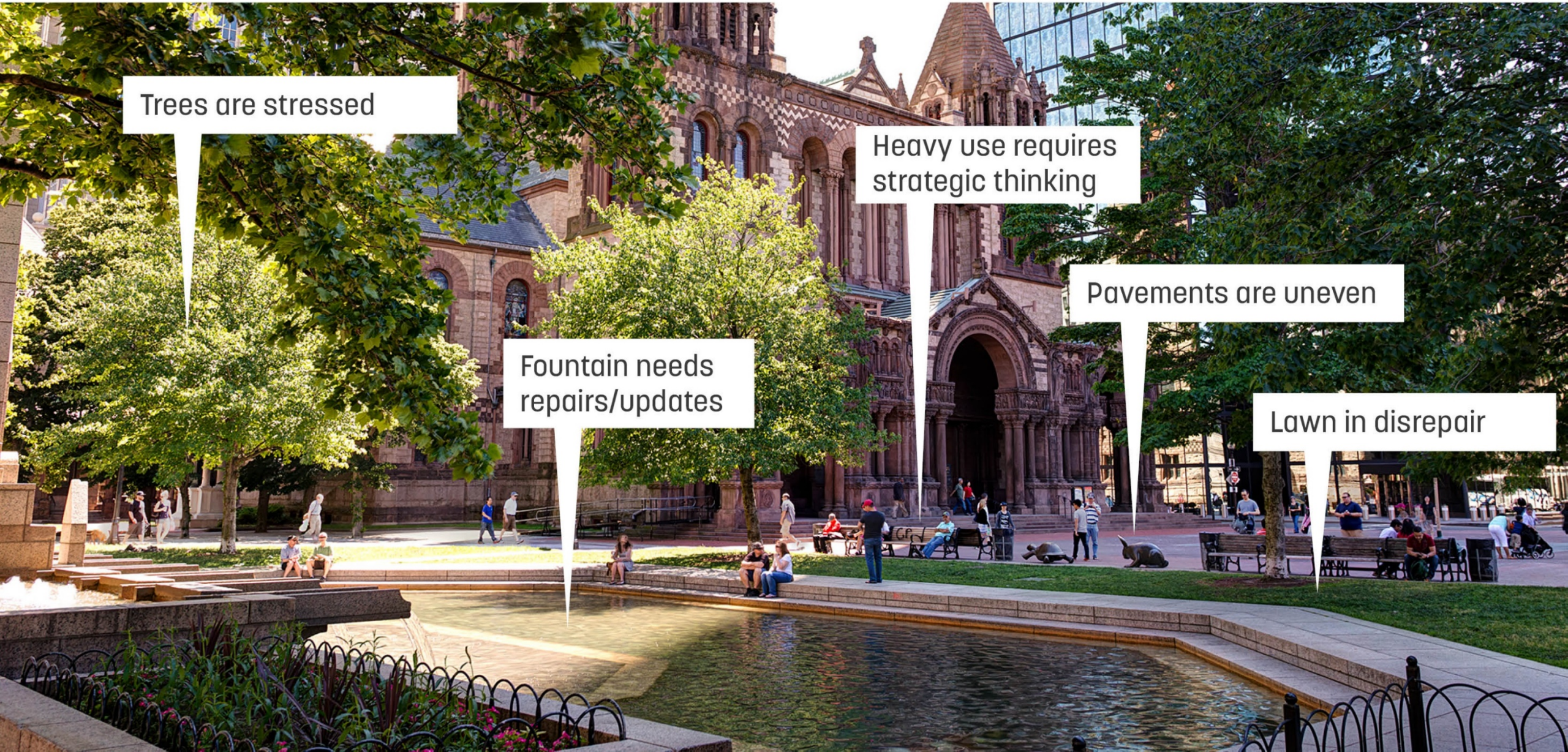
Trees are stressed

Heavy use requires strategic thinking

Pavements are uneven

Fountain needs repairs/updates

Lawn in disrepair





# ...the challenges run deeper than Copley's surface.

## WHAT WE SEE

---

**Trees are stressed**

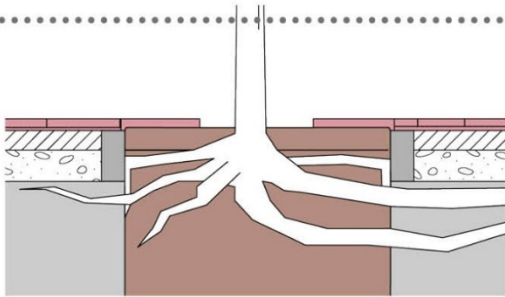
**Pavement uneven and lawn in disrepair**

**Fountain needs repairs / updates**

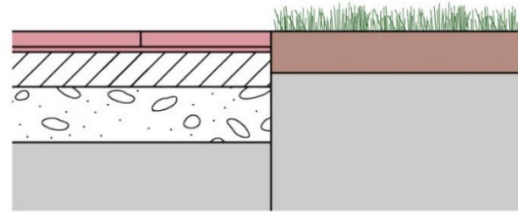
**Square is heavily programmed**

## UNDERLYING CHALLENGE

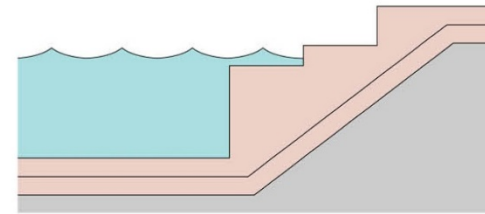
---



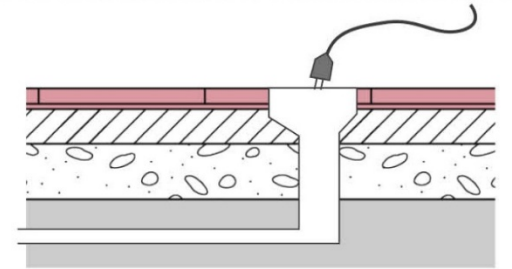
**Compacted soils and limited soil volume prevent trees from thriving**



**Not designed for heavy vehicular use or modern ADA standards -- needs additional structural support**



**Mechanical equipment needs to be replaced and brought to modern standards**



**Need to update utilities, infrastructure and vehicular service for events**



# 2,000+

## touchpoints with the community, and counting



**1,244**

Online Survey  
Responses in  
Phase 1

**+**

**439**

Online Survey  
Responses in  
Phase 2 (860  
touch points total)

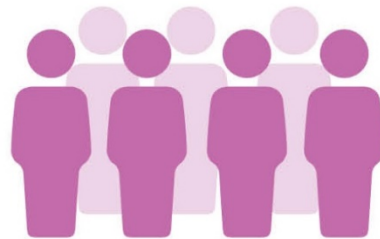


**16**

Steering Committee  
Members have  
attended 3 meetings

**27**

Meetings with  
Parks staff



**85**

Attendance at  
first public forum,  
including live polling

**+**

**65**

Attendance at  
second public forum,  
including small  
group discussions



# Today Copley is many things to a diversity of visitors

\*\* Summarized from over 1,300 survey responses and conversations in Phase 1

## OPEN AIR MARKET

*"I love the farmer's market and think it would be great to have a rotation of vendors on a weekly basis."*

## SKATEBOARDING SPOT

*"Copley Square has been a beacon for skateboarding in Boston for decades."*

## LUNCH HANGOUT

*"Great place to bring your lunch and relax and be entertained by skateboarders"*

## RELAXING PARK

*"It is wonderful to have a place where one can go to relax (walk, sit) amid the hustle and bustle of the city"*

## HISTORIC ICON

*"The beauty of the Square is in the harmony of historic architecture"*





**An Iconic Landmark at  
the Heart of Back Bay**

**An Inclusive Bostonian  
Gathering Place**

**CHARACTER**

**PEOPLE**

**CORNERSTONES  
OF A SUCCESSFUL  
COPLEY SQUARE**

*Project Guiding Principles*

**PROGRAM**

**ENVIRONMENT**

**A Vibrant Destination  
within the Hub**

**A Durable and  
Sustainable New  
England Landscape**

*NOTE: More detail on the project guiding principles, including detailed goals, can be found on the project website.*



# Copley Square Today





# A few key elements resonated most among the conceptual options

## CITY PLATFORM



## RAISED CROSSINGS



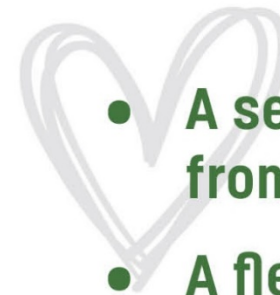
## FRAMED ELLIPSE



- **The Platform**
- **The relationship between Trinity, lawn, plaza and Dartmouth Street**



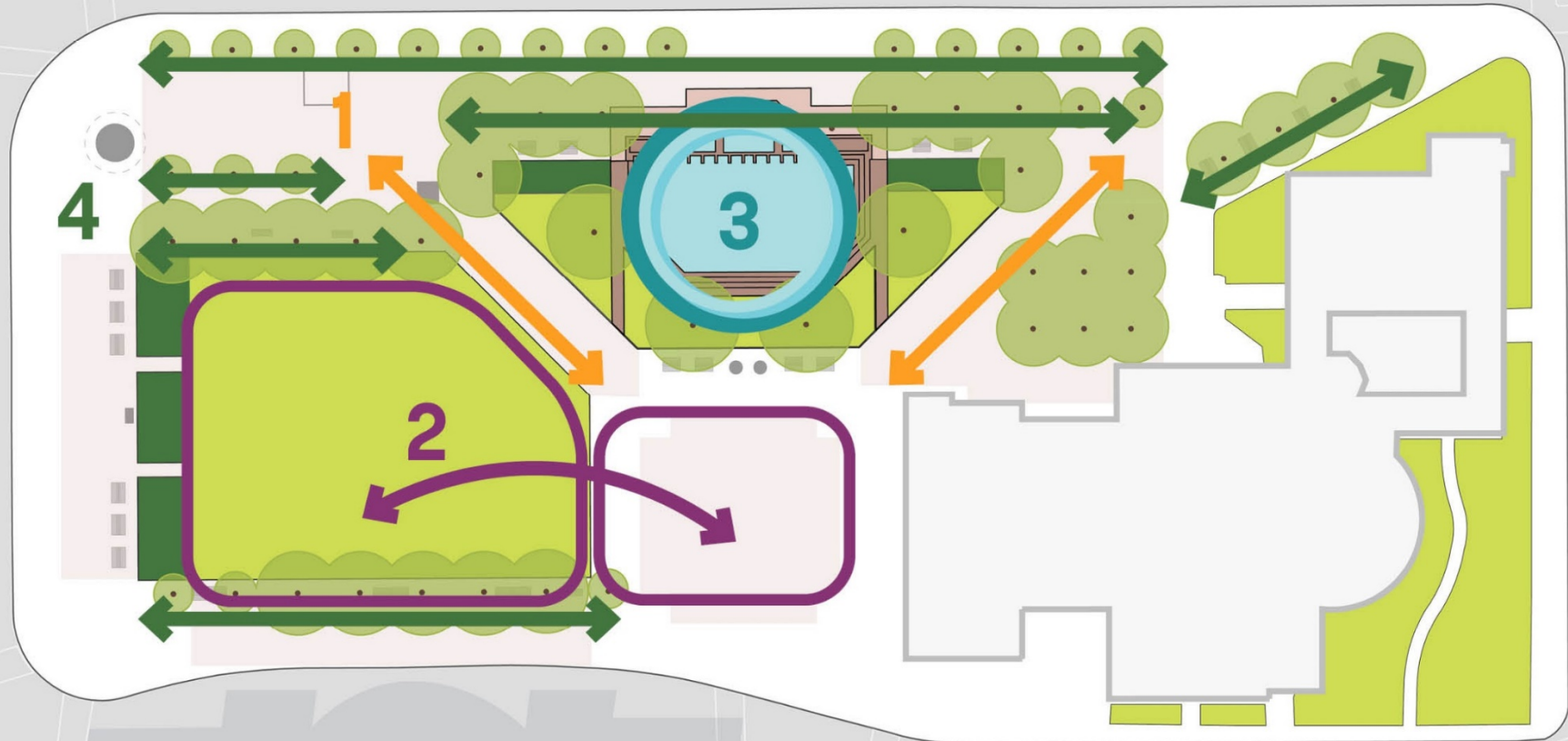
- **Dynamic, connective pathways**
- **Intimate spaces for gathering**



- **A sense of enclosure from the street**
- **A flexible, but sculptural fountain**



# Maintaining and Reinforcing Beloved Features of Today's Square



**1** Cultural Connections

**2** Open view between BPL and Trinity; flip plaza and lawn

**3** Location of fountain with similar vegetation and seating

**4** Linear and gridded existing trees



The background features a stylized illustration of a university campus. On the left, there are several trees of varying sizes. In the center and right, there is a large, multi-story building with a prominent central tower and a cross on top, suggesting a cathedral or a university hall. The entire scene is rendered in a light green color against a darker green background.

# Refined Concept

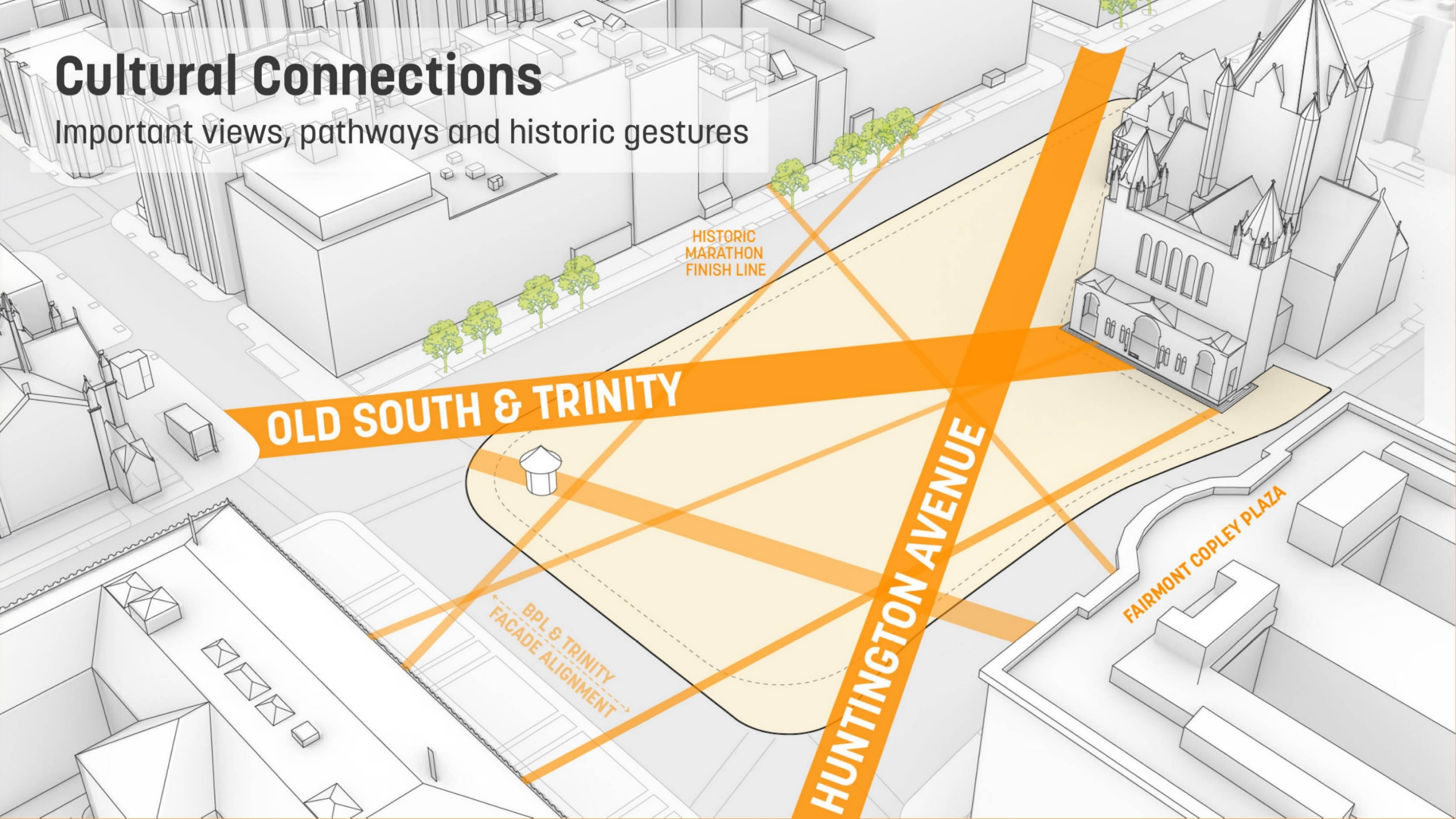
---

A Contemporary Vision grounded in History, Culture  
and Community Voice



# Cultural Connections

Important views, pathways and historic gestures



HISTORIC  
MARATHON  
FINISH LINE

OLD SOUTH & TRINITY

HUNTINGTON AVENUE

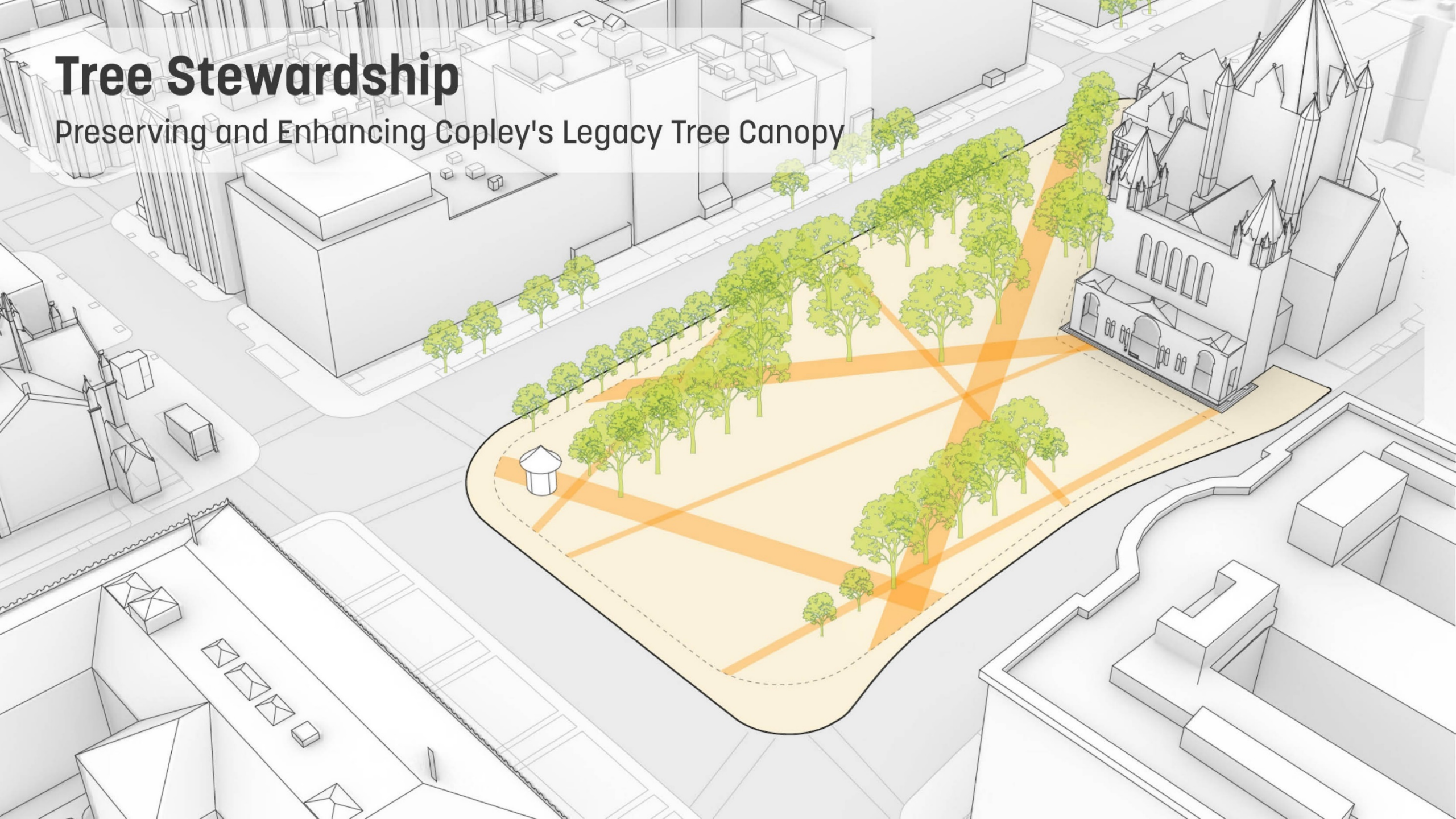
FAIRMONT COPLEY PLAZA

BPL & TRINITY  
FACADE ALIGNMENT



# Tree Stewardship

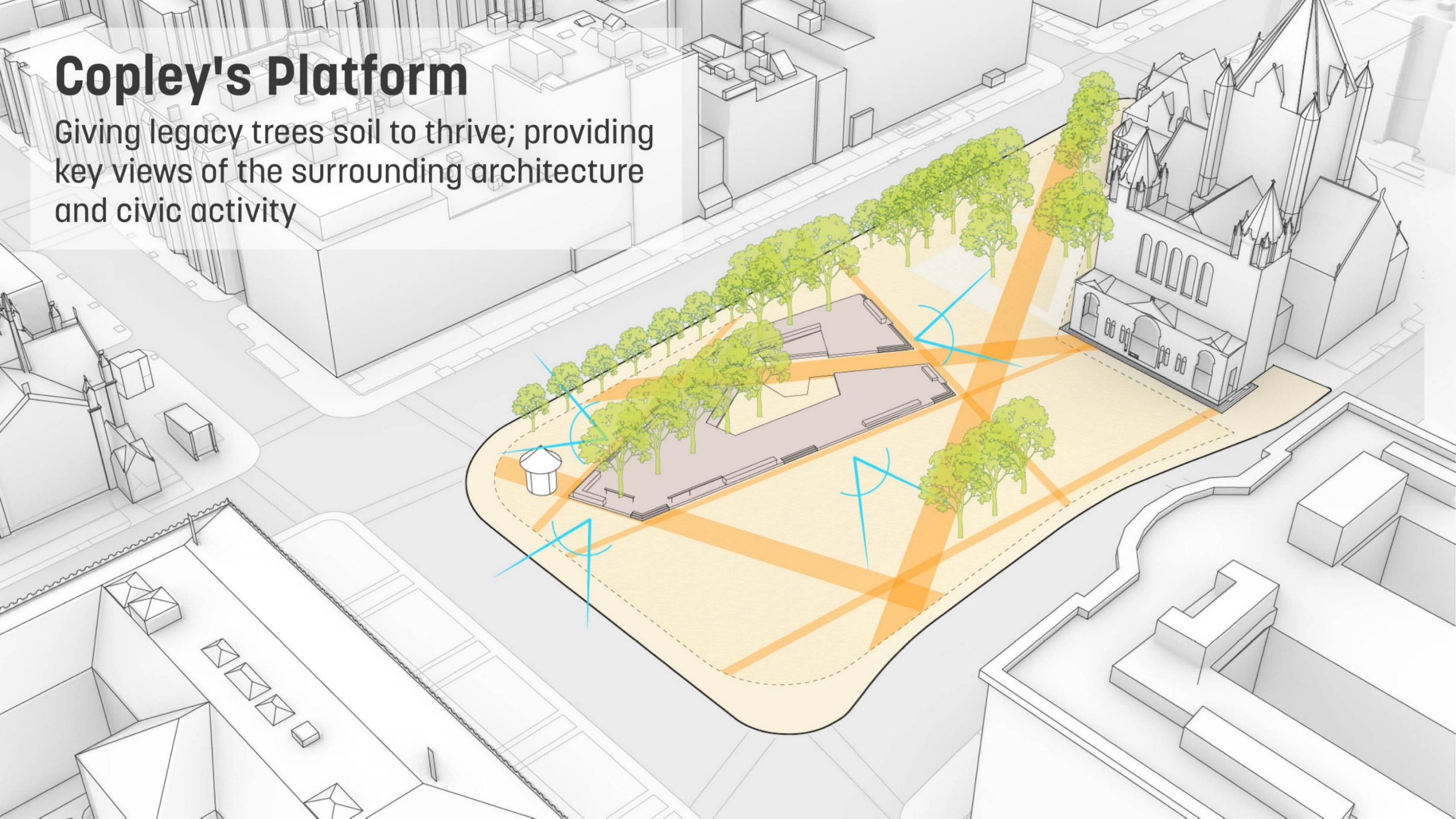
Preserving and Enhancing Copley's Legacy Tree Canopy





# Copley's Platform

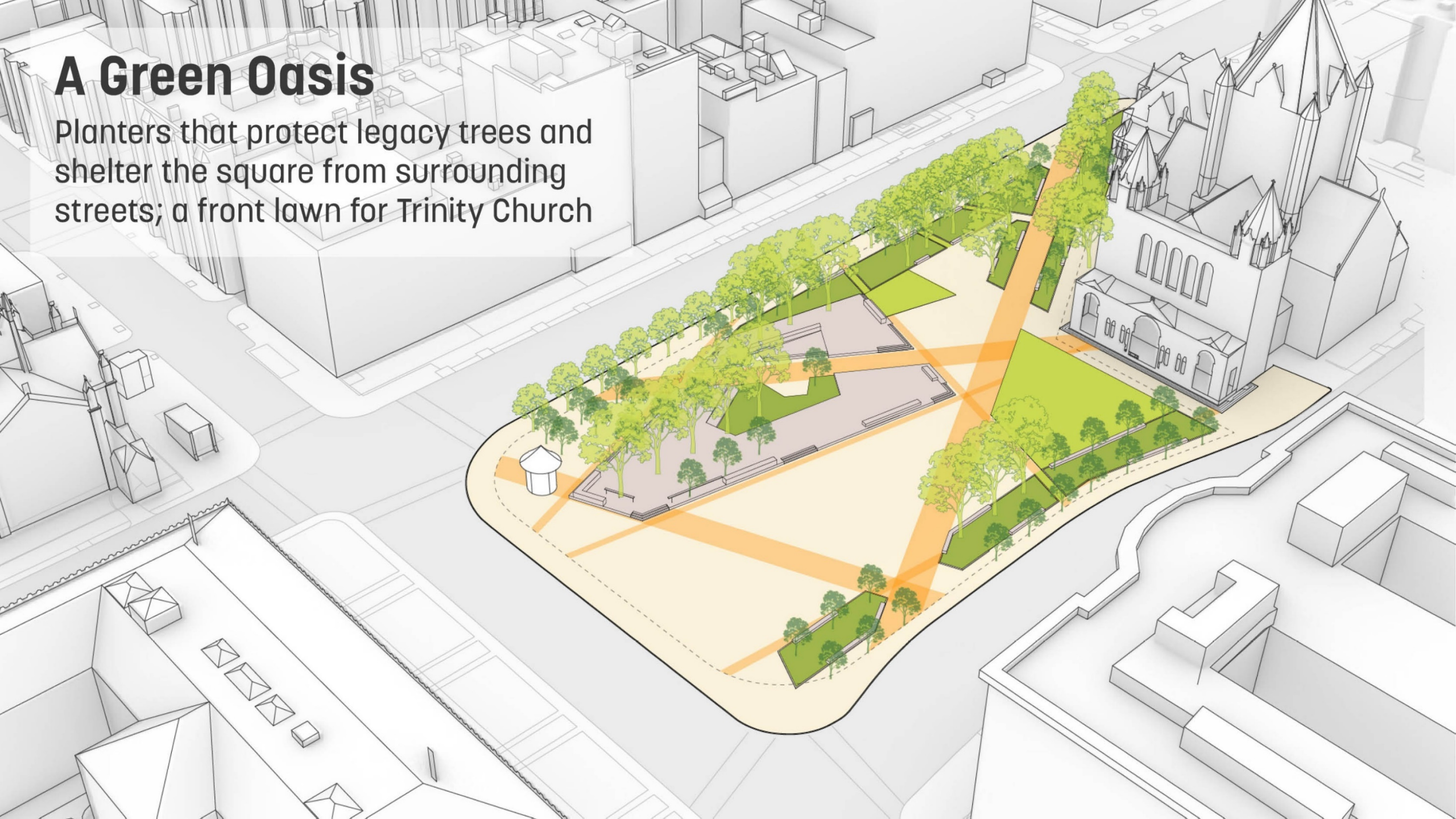
Giving legacy trees soil to thrive; providing key views of the surrounding architecture and civic activity





# A Green Oasis

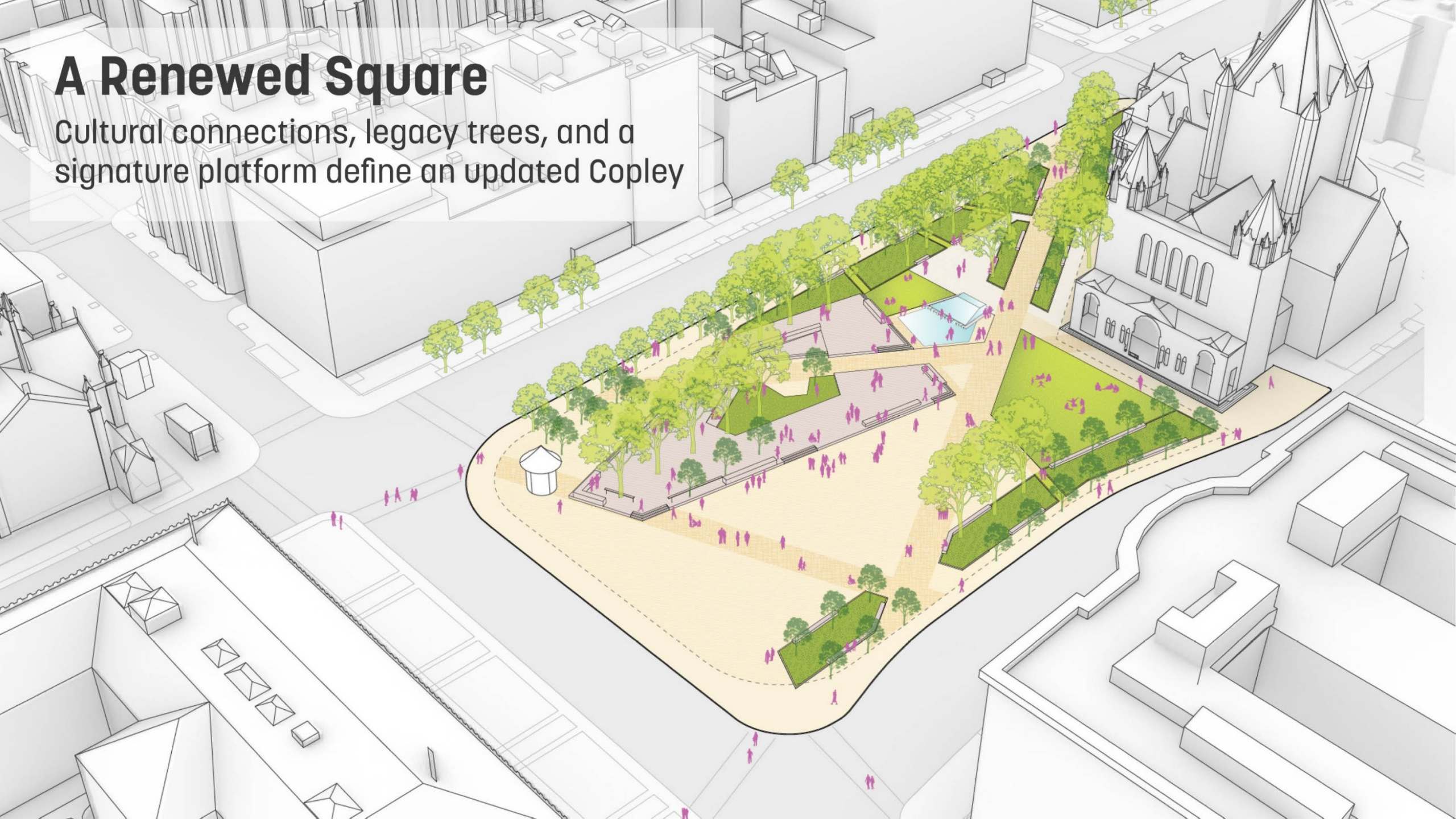
Planters that protect legacy trees and shelter the square from surrounding streets; a front lawn for Trinity Church





# A Renewed Square

Cultural connections, legacy trees, and a signature platform define an updated Copley





# Site Plan



Boylston St

Dartmouth st

BPL  
McKim

PLAZA

PLATFORM

FOUNTAIN

GROVE

TRINITY  
SANCTUARY

LAWN

Trinity Church

Clarendon St

St James Ave

Fairmont Copley Plaza Hotel

200 Clarendon

0' 40' 80'



# Concept Experience

The background is a solid teal color. It features faint white line art of a landscape. On the left, there are several trees of varying sizes. In the center and right, there is a large, detailed architectural drawing of a building with multiple gables, a central tower with a cross, and arched windows. The overall style is clean and modern.

---

A closer look at some of the details and  
how the design feels



# DAILY USE

## +Platform

Sit, relax, watch

## +Fountain

Ripples, falls, and reflecting pool

## +Shaded Grove

Cool and calm for hot summer days

## +Lawn

Community front yard

## +Connections

Clear paths across the Square

## +Plaza

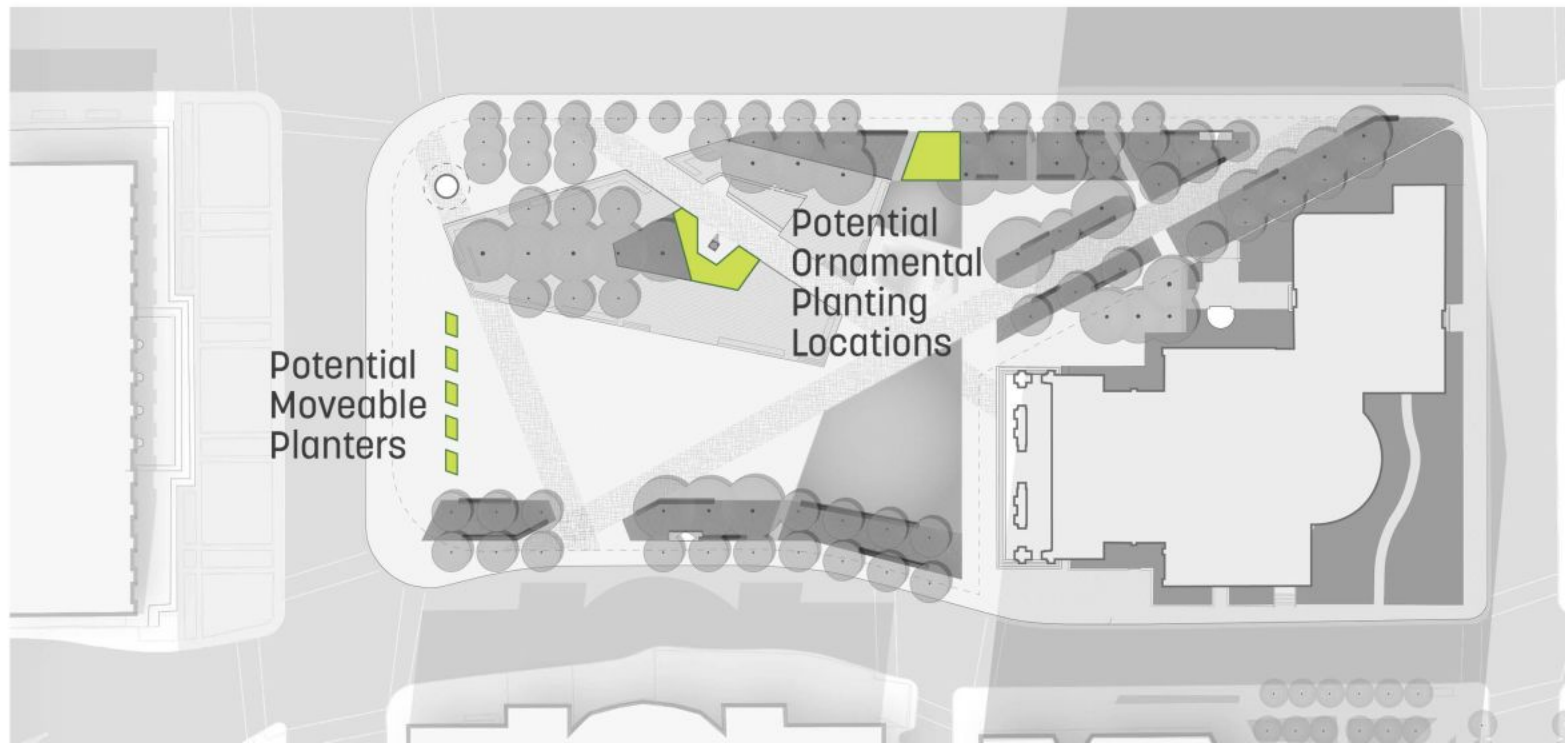
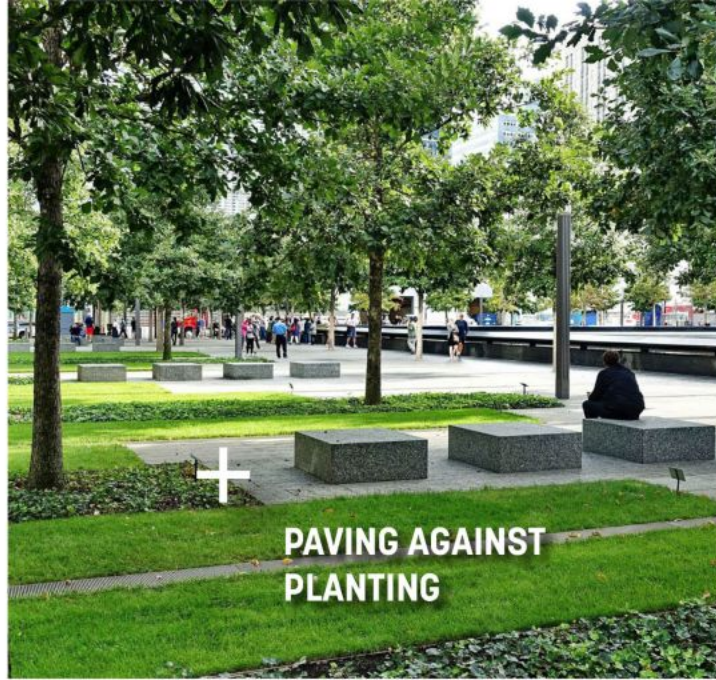
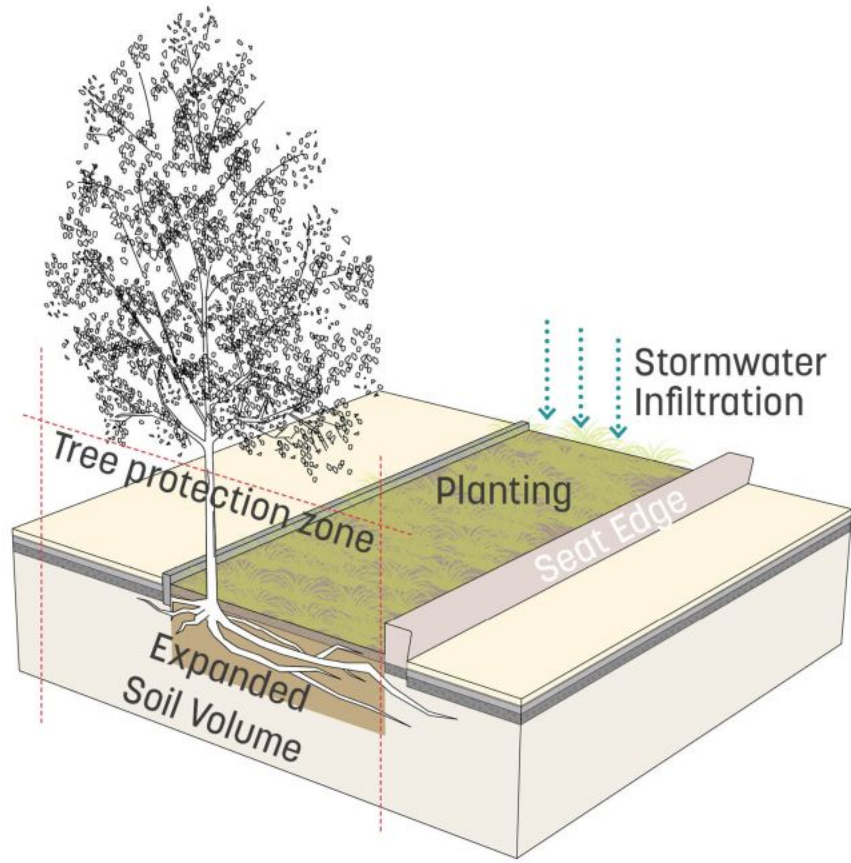
Flexible hardscape for pedestrians and events





# Trees & Planting

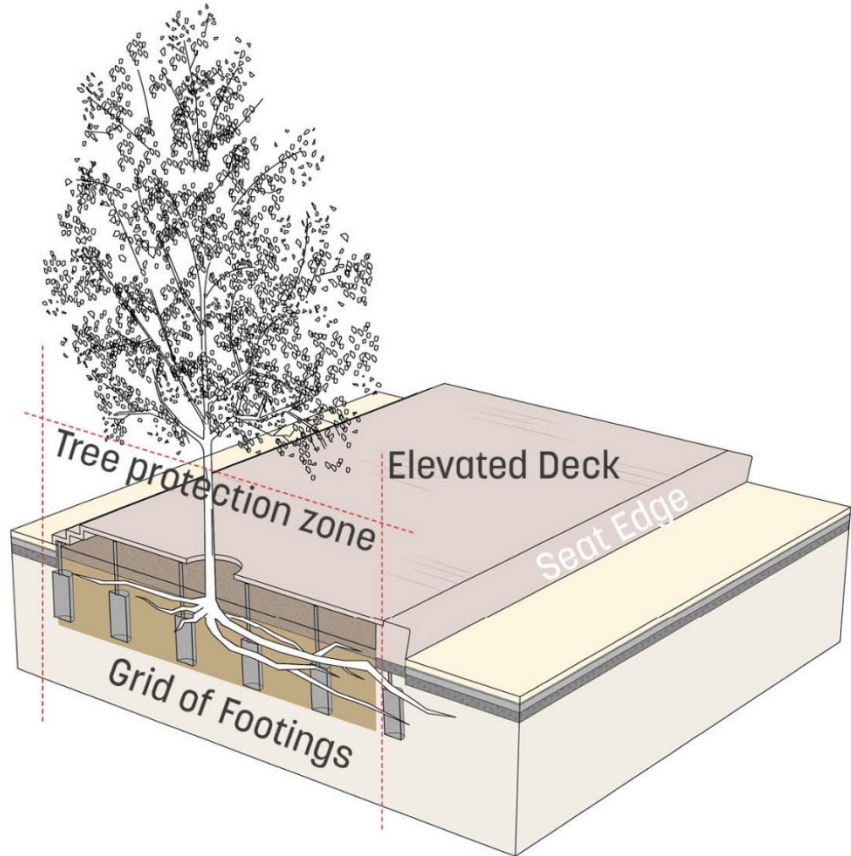
Preserving and enhancing Copley's legacy trees while providing new color, seasonal interest and shelter





# Copley's Platform

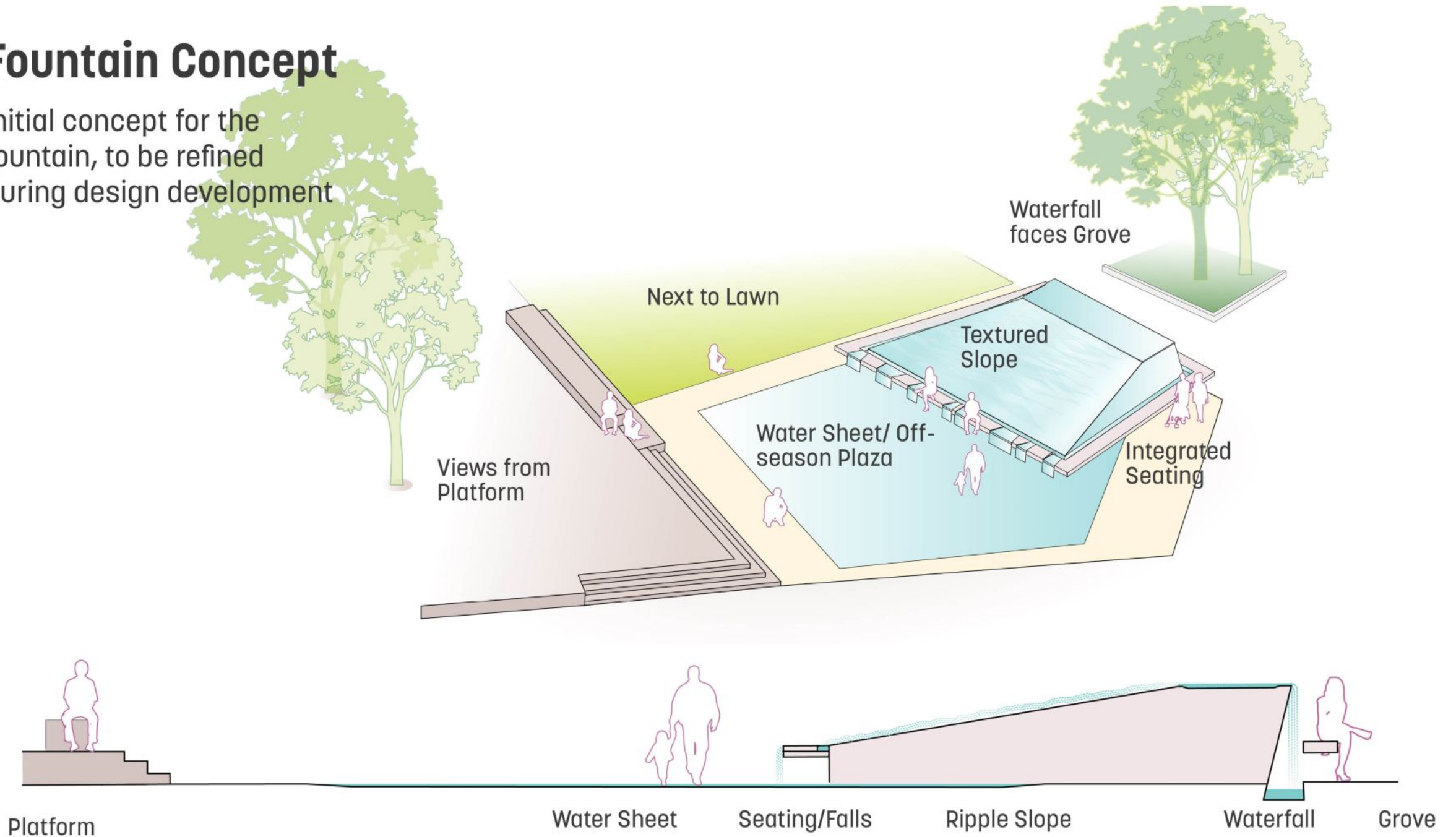
Making a mechanism for tree preservation into a signature gathering place





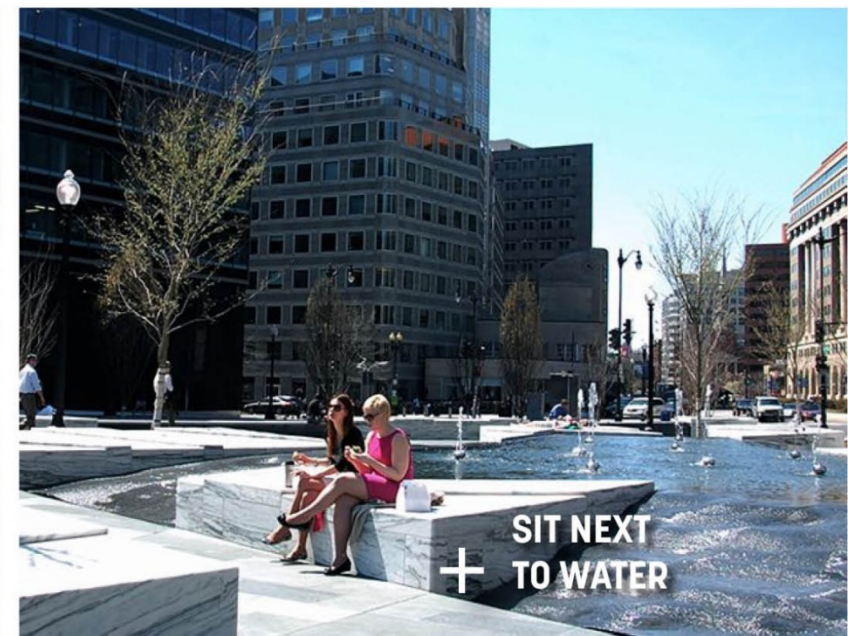
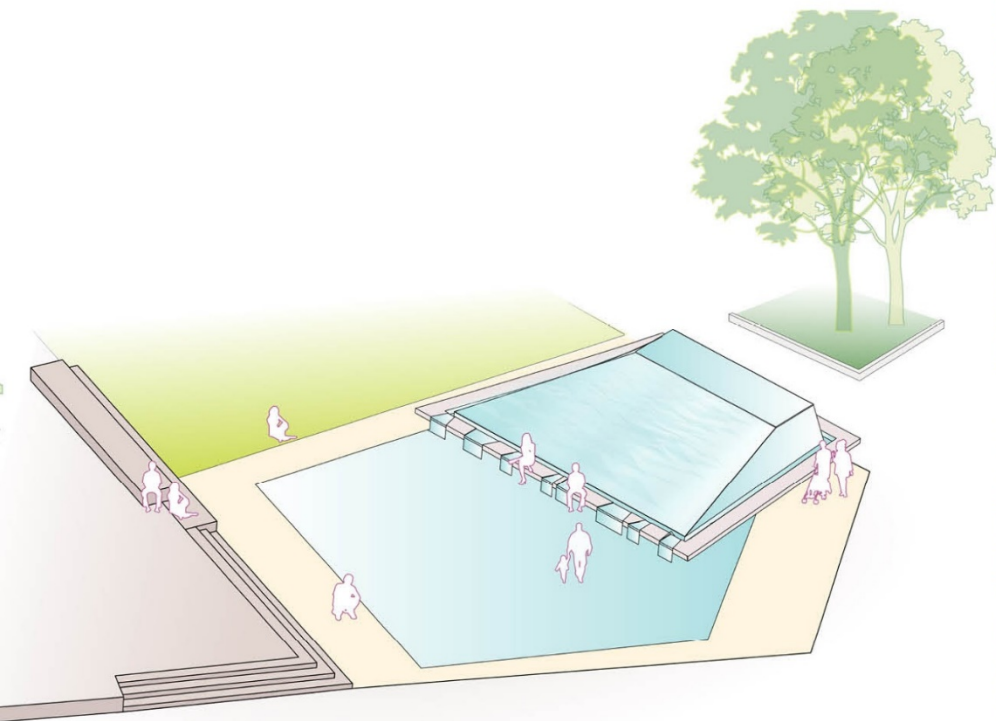
# Fountain Concept

Initial concept for the fountain, to be refined during design development





# Fountain Concept





# Public Art



**John Singleton  
Copley Statue**

Future locations for existing public art in the square.  
Goal to keep intent of original placements intact.  
Design team and city in conversation with artists.



**Boston Marathon  
Memorial**



**Kahlil Gibran  
Memorial**



**Tortoise and  
Hare Sculpture**



# WEEKLY EVENTS

## + Platform

Built in stage and seating for performances

## + Lawn

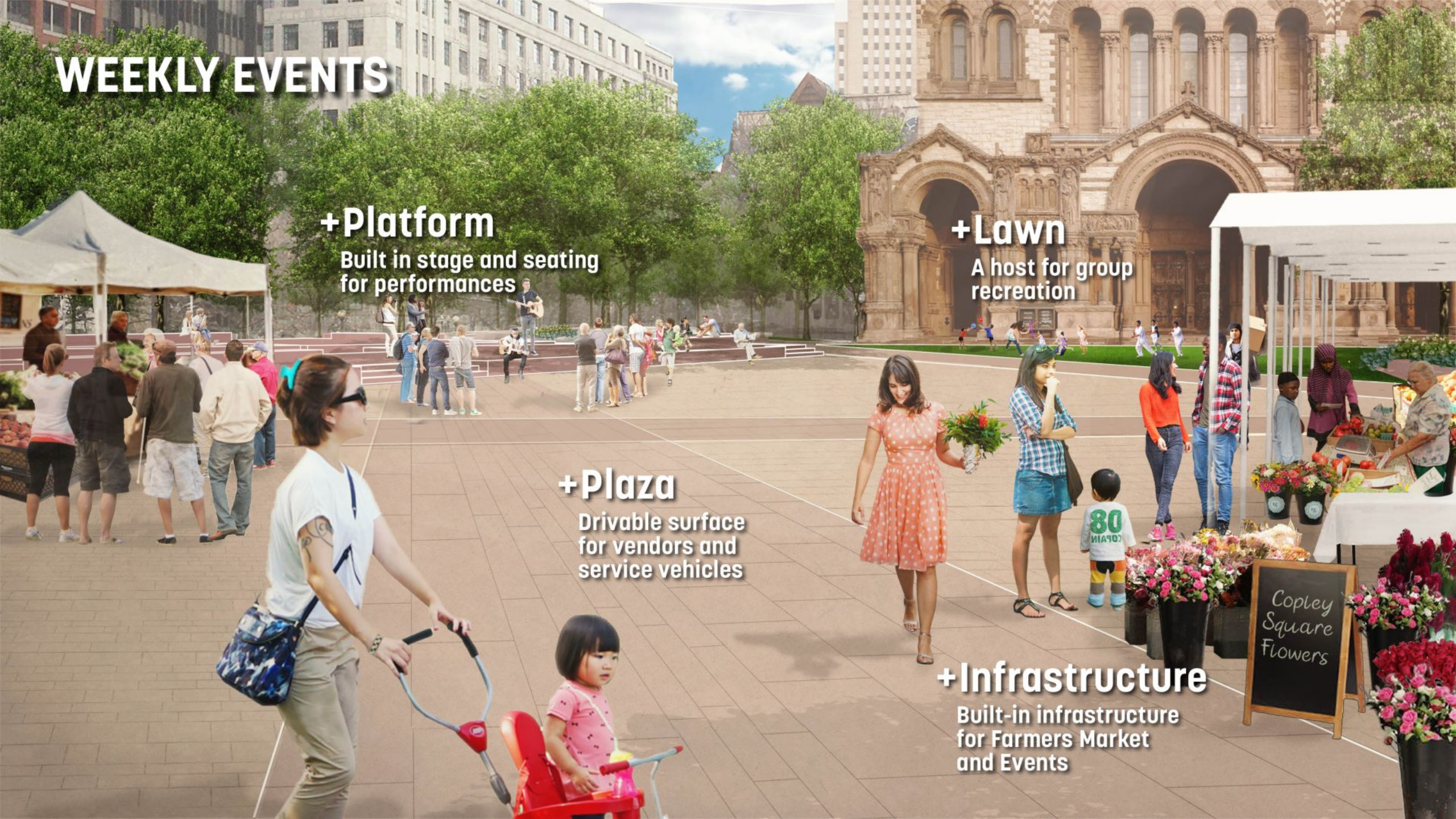
A host for group recreation

## + Plaza

Drivable surface for vendors and service vehicles

## + Infrastructure

Built-in infrastructure for Farmers Market and Events

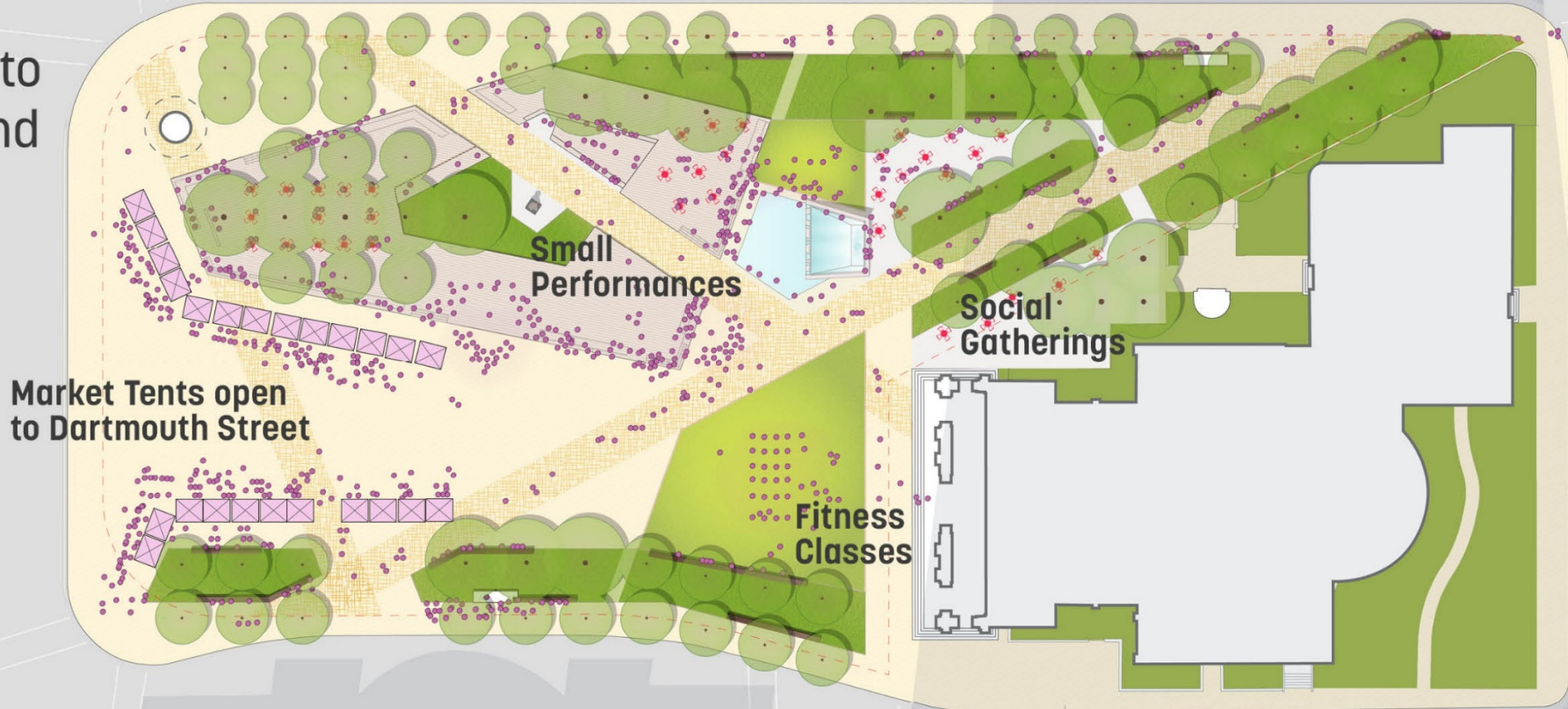




# Weekly Event Use

## *Potential Farmer's Market Setup*

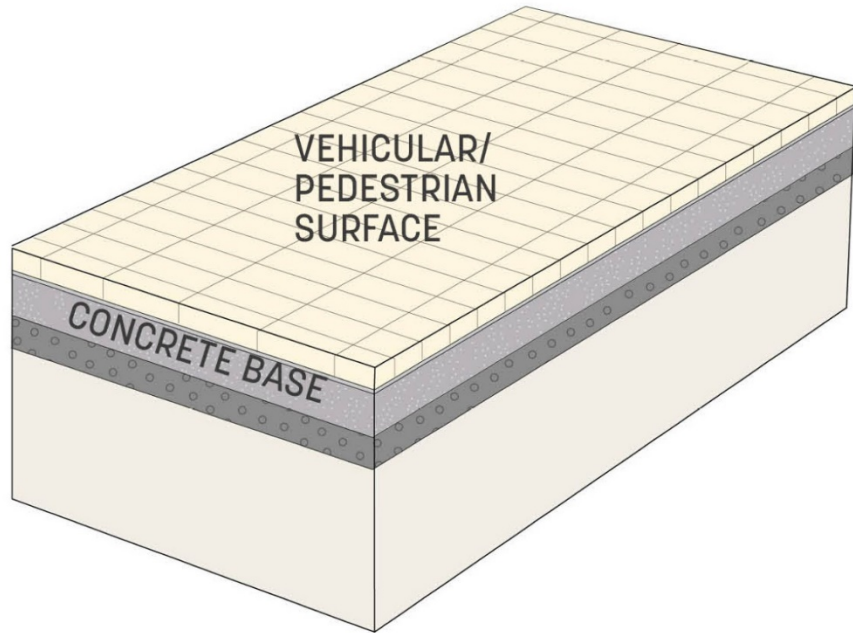
Infrastructure will be located to support tent and event set up.





# Paving

Carpets of pavers on a vehicular concrete base define intimate spaces and routes through the larger square





# LARGE EVENTS

## +Infrastructure

Plug + Play infrastructure for large events

## +Connections

Plaza opens to street and library

## +Platform

Built-in seats, lean rails, and elevated viewing areas

## +Planters

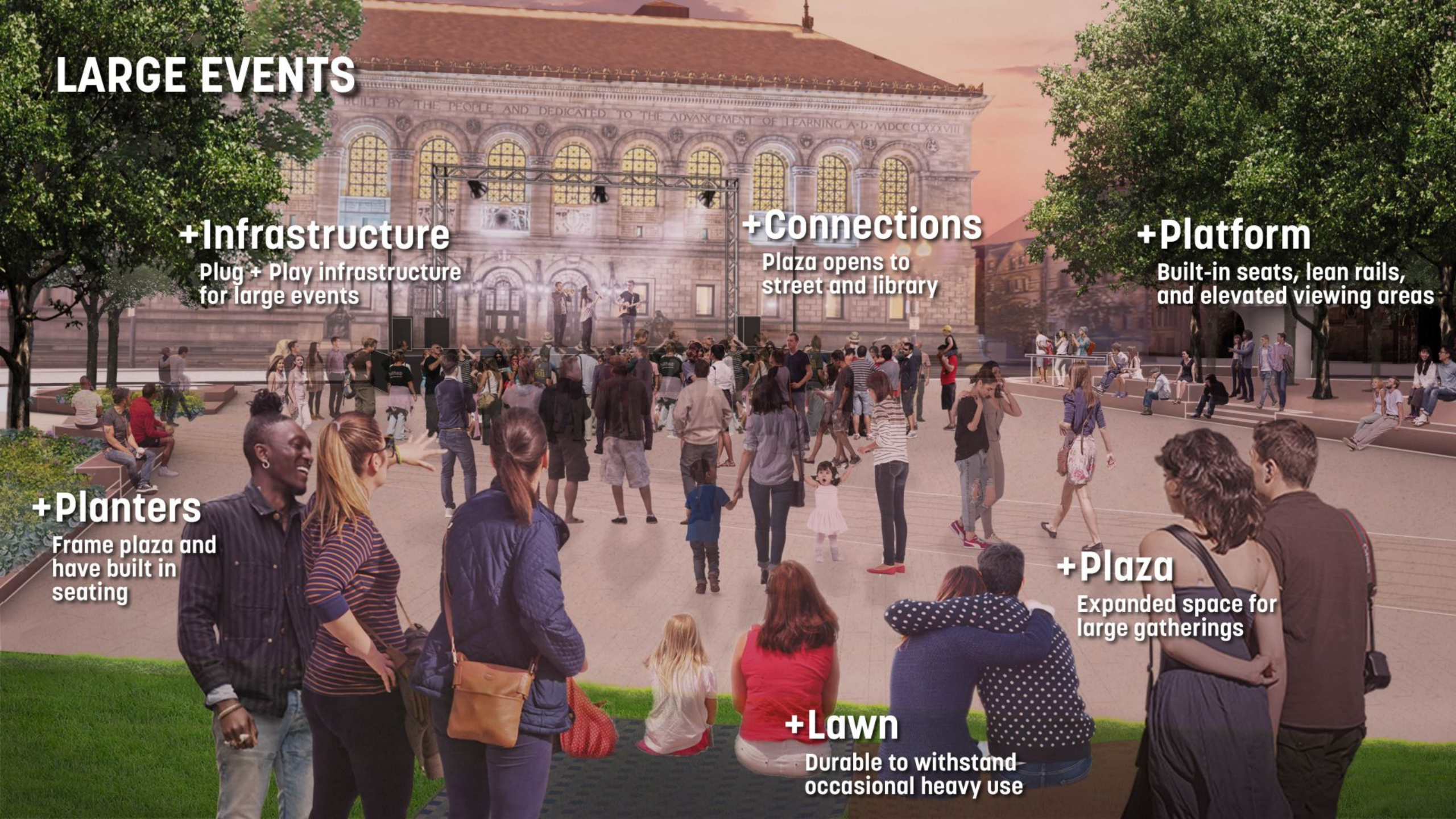
Frame plaza and have built in seating

## +Plaza

Expanded space for large gatherings

## +Lawn

Durable to withstand occasional heavy use





## Event Use

### *Potential 40'x60' Stage Setup*

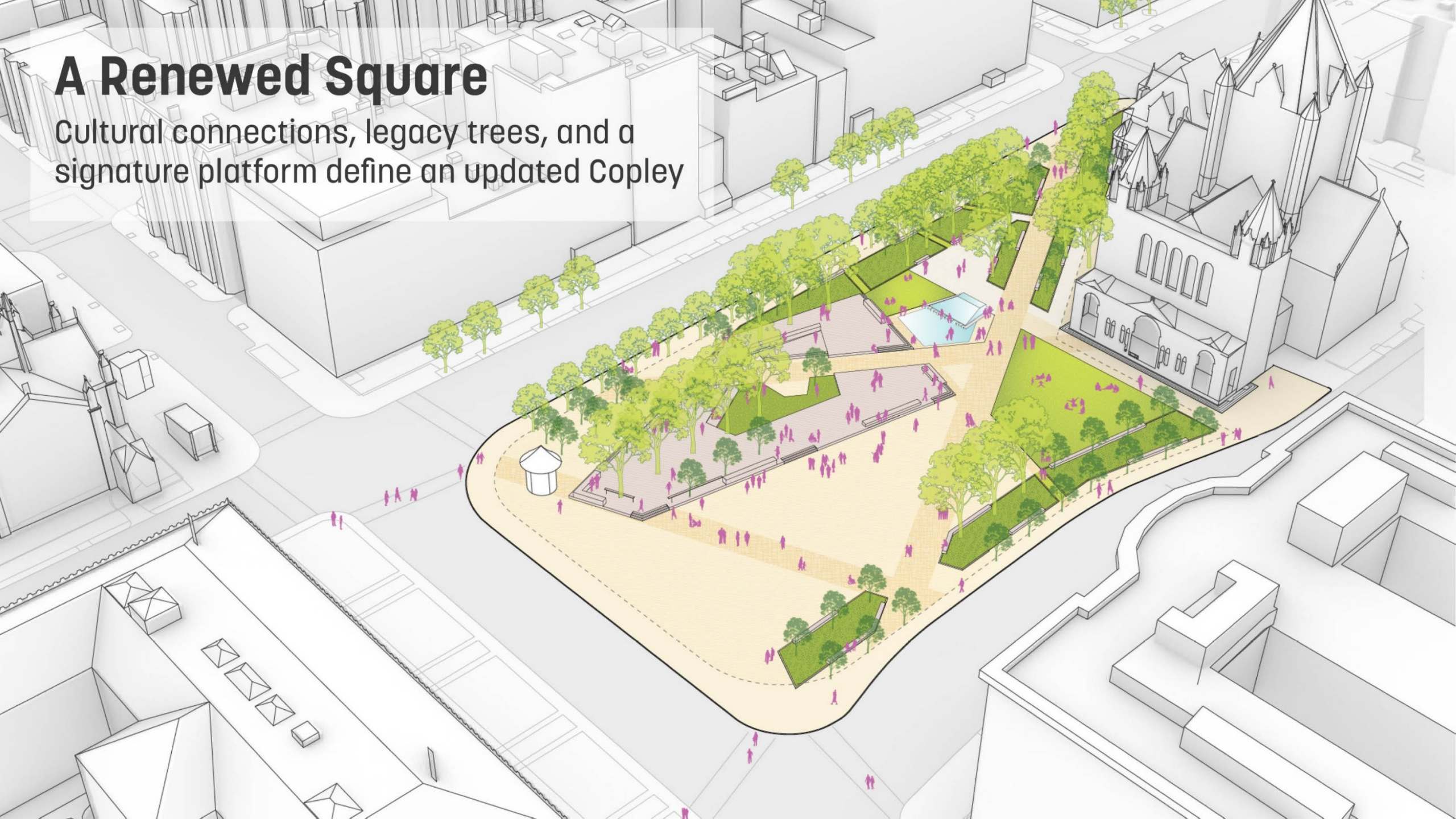
Infrastructure will be located to support tent and event set up.





# A Renewed Square

Cultural connections, legacy trees, and a signature platform define an updated Copley





# AGENDA

## **Part 1: Presentation** (30 minutes)

- Introduction and Process
- Conceptual Foundations
- Refined Concept

## **Part 2: Small Group Q & A** (15 minutes)

*Breakout groups to ensure that everyone has a chance to have their questions answered and initial thoughts heard*

## **Part 3: Live Polling** (15 minutes)



# Join the conversation live now

*We will be asking a series of questions live. You can answer them in one of two ways:*

JOIN BY PHONE/TEXT

**Text SASAKIPOLLS  
to 22333 to join**

**OR**

JOIN BY WEB

**Navigate to  
[pollEV.com/Sasakipolls](https://pollEV.com/Sasakipolls)**



# DAILY USE

## +Platform

Sit, relax, watch

## +Fountain

Ripples, falls, and reflecting pool

## +Shaded Grove

Cool and calm for hot summer days

## +Lawn

Community front yard

## +Connections

Clear paths across the Square

## +Plaza

Flexible hardscape for pedestrians and events





When poll is active, respond at [pollev.com/sasakipolls](https://pollev.com/sasakipolls)

Text **SASAKIPOLLS** to **22333** once to join

# Where would you most love to be within the Square?

On top of the platform

At the edge of the platform

In the shady grove

At the fountain

On the lawn

Out on the plaza

Sitting at the edge of the planters

Other

None of the above



**How do you think it would feel to be in the Square? (one word, no spaces)**



# WEEKLY EVENTS

## +Platform

Built in stage and seating  
for performances

## +Lawn

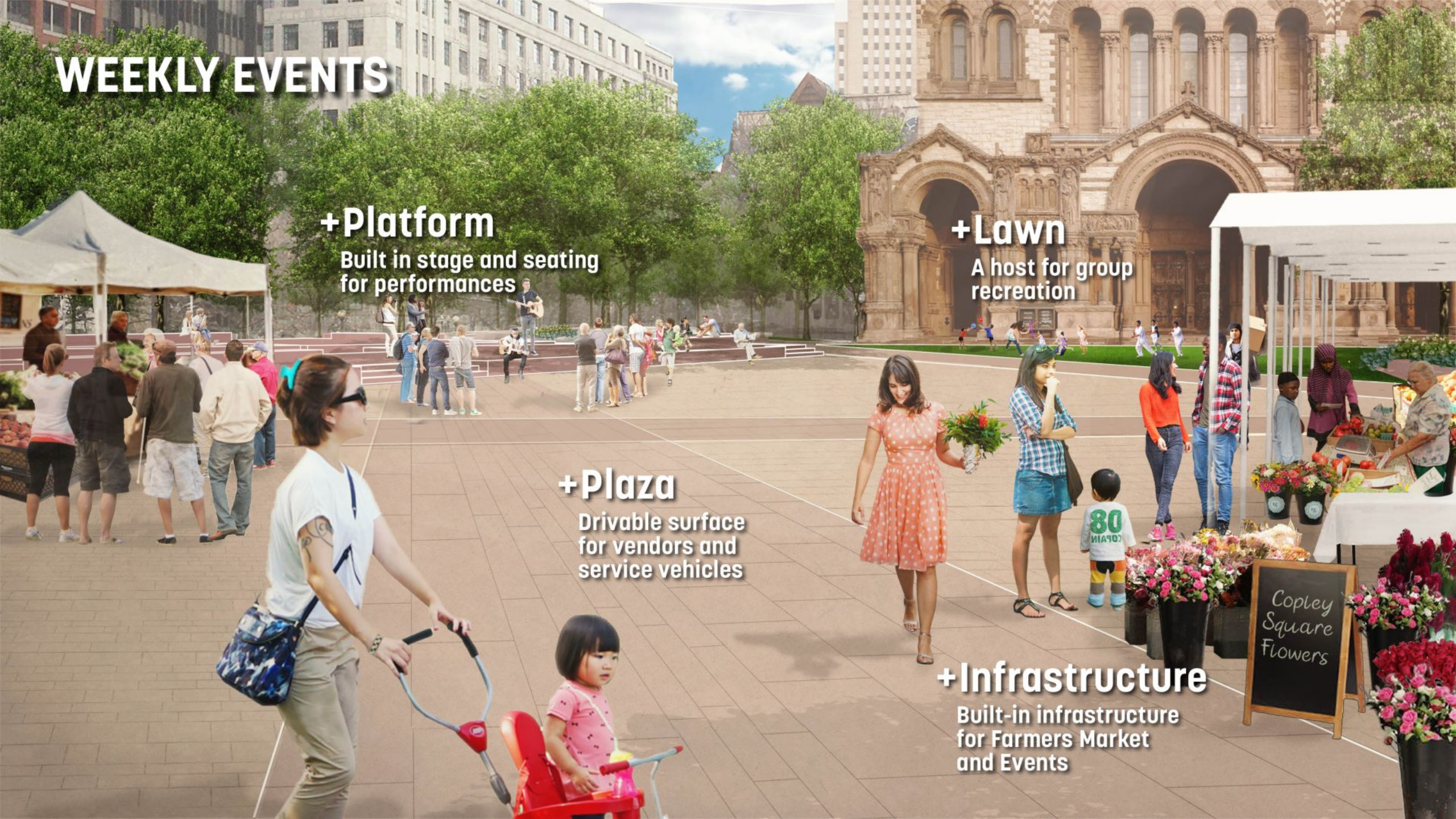
A host for group  
recreation

## +Plaza

Drivable surface  
for vendors and  
service vehicles

## +Infrastructure

Built-in infrastructure  
for Farmers Market  
and Events





# LARGE EVENTS

## +Infrastructure

Plug + Play infrastructure for large events

## +Connections

Plaza opens to street and library

## +Platform

Built-in seats, lean rails, and elevated viewing areas

## +Planters

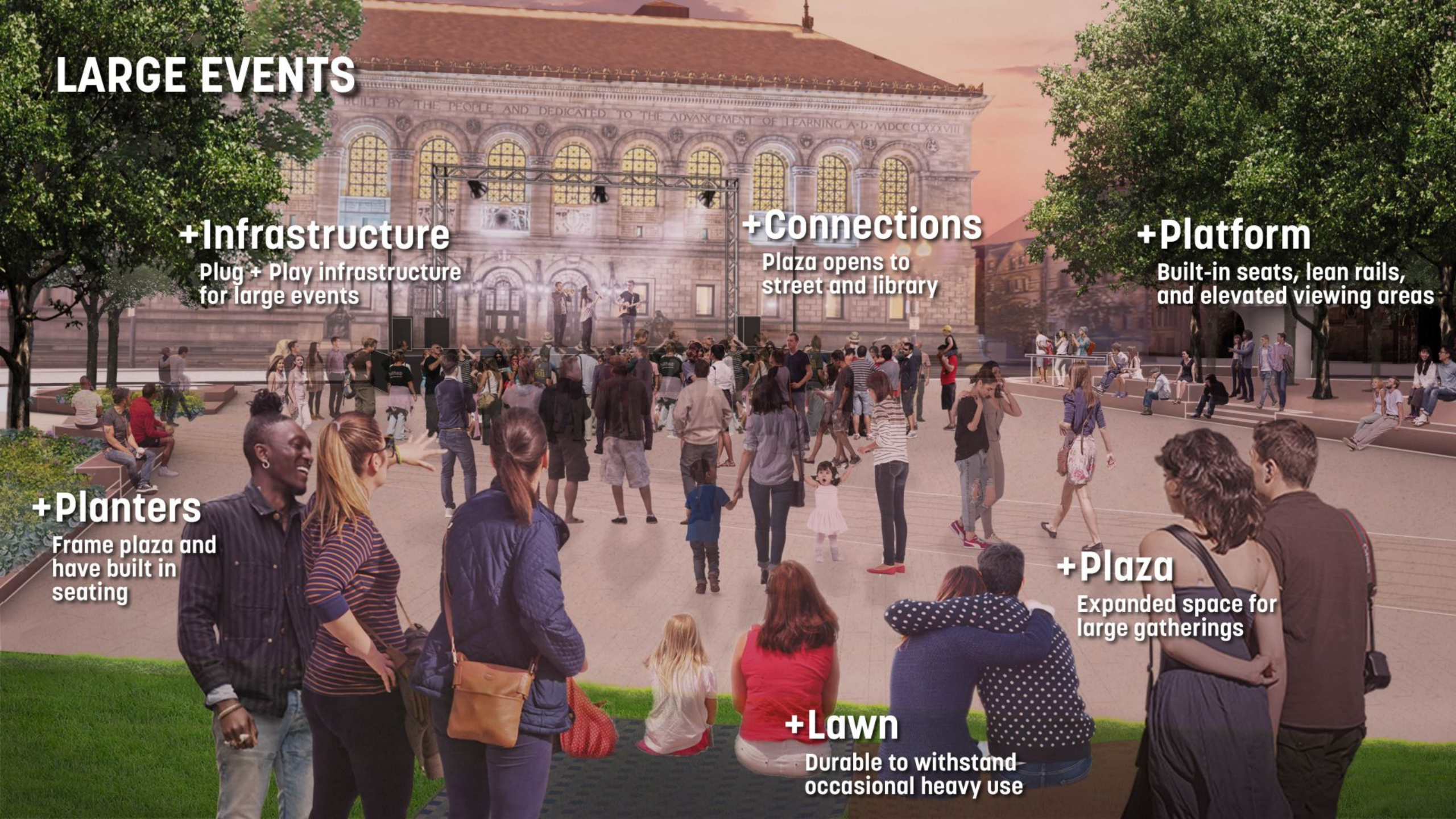
Frame plaza and have built in seating

## +Plaza

Expanded space for large gatherings

## +Lawn

Durable to withstand occasional heavy use





# What kind of events would draw you most? (choose up to three)

Farmer's Market

Street performers

Rallies and protests

Concerts

Boston Marathon

Fitness classes

Public art installations

Other

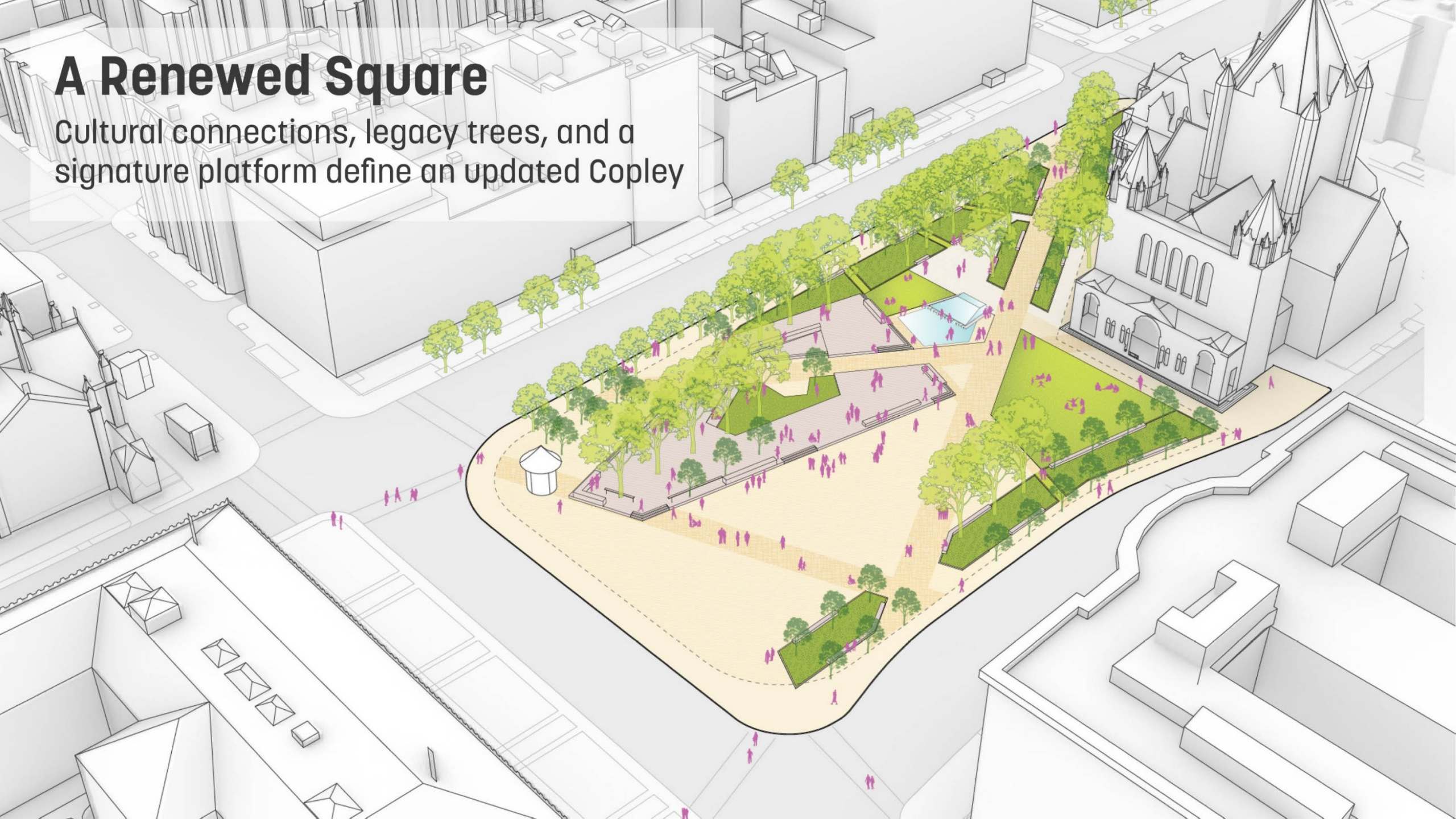


# What excites you about this event space?



# A Renewed Square

Cultural connections, legacy trees, and a signature platform define an updated Copley





# Is there an area that you think is particularly successful?

The lawn

The platform

The plaza

The fountain

The grove

Planters

Circulation

Tree preservation strategy

Other

None



# What do you want to keep providing feedback on as we develop design details?

The fountain

The platform

Paving design

The lawn

Other



# Overall, how excited are you about the future design of Copley Square?

Not at all excited **A**

Somewhat excited **B**

Neutral **C**

Quite excited **D**

Very excited **E**



# Have a Question?



Type it into the Chat window.



Click to raise your hand

Raise Hand



Click to type your questions

Q + A



Click to mute or unmute

Microphone



Click to show or hide your video

Video

# Take the Survey & Share with Others



[bit.ly/copley-survey-3](https://bit.ly/copley-survey-3)

# Updates & Info on Project Website



[bit.ly/copley-boston](https://bit.ly/copley-boston)





# Next Steps

The background features a teal color with white line-art illustrations. On the left, there are several trees of varying sizes and a building with windows. On the right, there is a large, detailed illustration of a Gothic-style church with a central spire and a cross on top. A small dark teal horizontal bar is located below the text.



# What Comes Next

We are here

Fall 2020

Winter 2020

Spring 2021

Summer 2021

Fall 2021

Groundbreaking  
Summer 2022

Opening  
2023

## SITE ANALYSIS

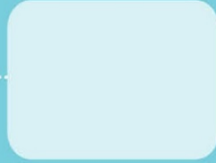
- Understand the Square's past and present
- Understand community perspective and vision for the future

## PROGRAM + SCHEMATIC DESIGN

Concept Options



Refined Conceptual Plan



## DEFINITIVE DESIGN

Design Development



Construction Documentation



## CONSTRUCTION



Public + Stakeholder Meetings



GOAL:

**LISTEN**

**TEST CONCEPTUAL IDEAS**

**CONFIRM REFINED CONCEPT**

**REFINE DESIGN**



**ONGOING COORDINATION WITH BPL**





# Questions?

**B Chatfield**

Project Manager

[abigail.chatfield@boston.gov](mailto:abigail.chatfield@boston.gov)

617-504-7709

**Survey** → [bit.ly/copley-survey-3](https://bit.ly/copley-survey-3)

**Project Website** → [bit.ly/copley-boston](https://bit.ly/copley-boston)

