

# Improvements to **RYAN PLAYGROUND**



Copley Wolff Design Group  
Landscape Architects & Planners



- 1 PROJECT TEAM INTRODUCTION**
  
- 2 PROJECT OVERVIEW**
  
- 3 PRESENTATION**  
Existing Conditions Summary  
Concept Alternatives  
Play Activity Types
  
- 4 COMMUNITY FEEDBACK**  
Meeting/Survey #1 Summary  
Listening + Discussion
  
- 5 CLOSING REMARKS + NEXT STEPS**



**B CHATFIELD**

Project Manager

abigail.chatfield@boston.gov, 617-504-7709

**CHRISTINE BRANDAO**

Outreach Coordinator

christine.brandao@boston.gov, 617-961-3006

**CHRISTINE WILSON + AARON KRAEMER**

Landscape Architects

Copley Wolff Design Group

**PATRICK FANDEL**

Office of Neighborhood Services

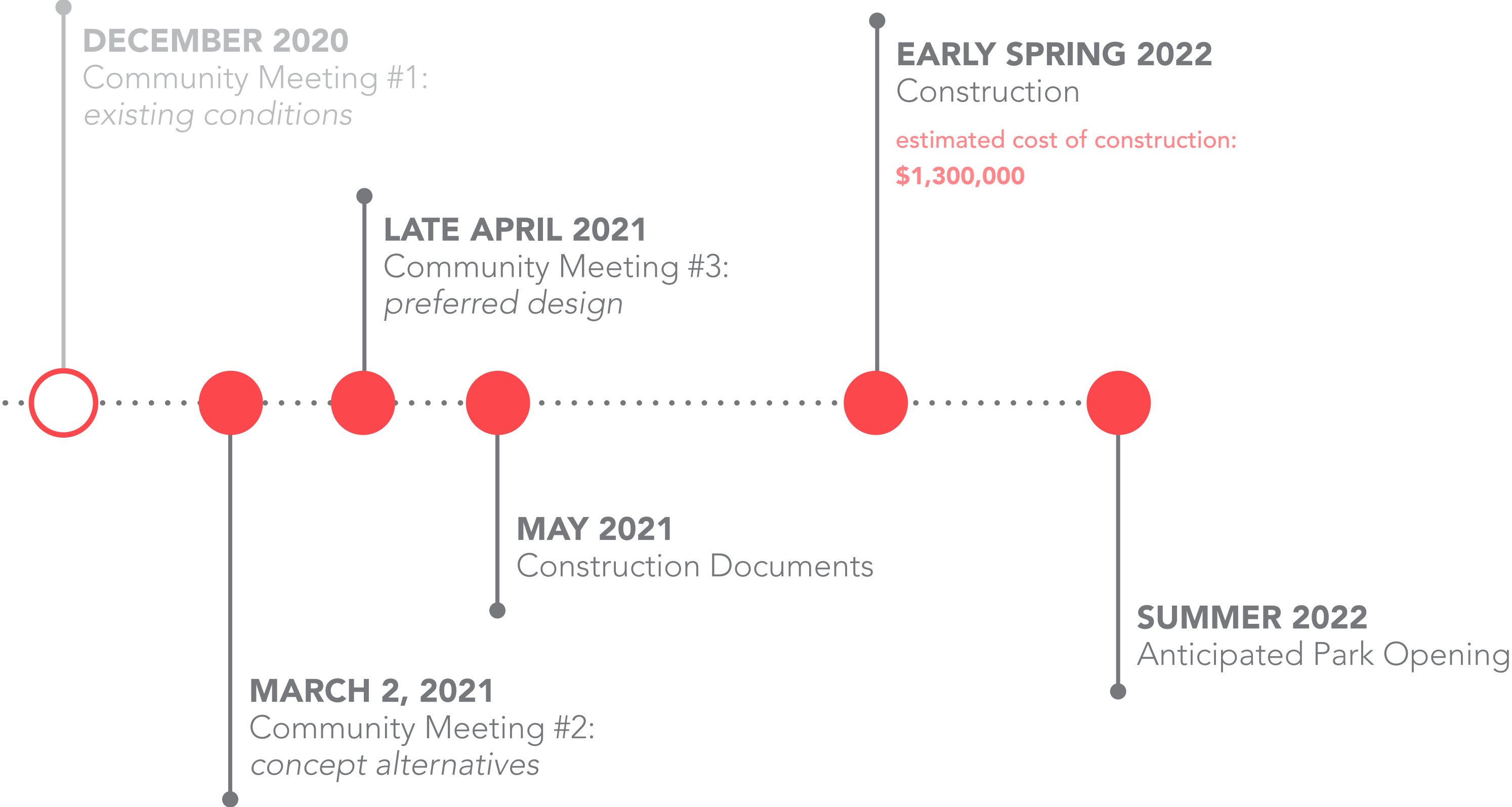
Patrick.Fandel@boston.gov, 617-635-4819





# PROJECT OVERVIEW







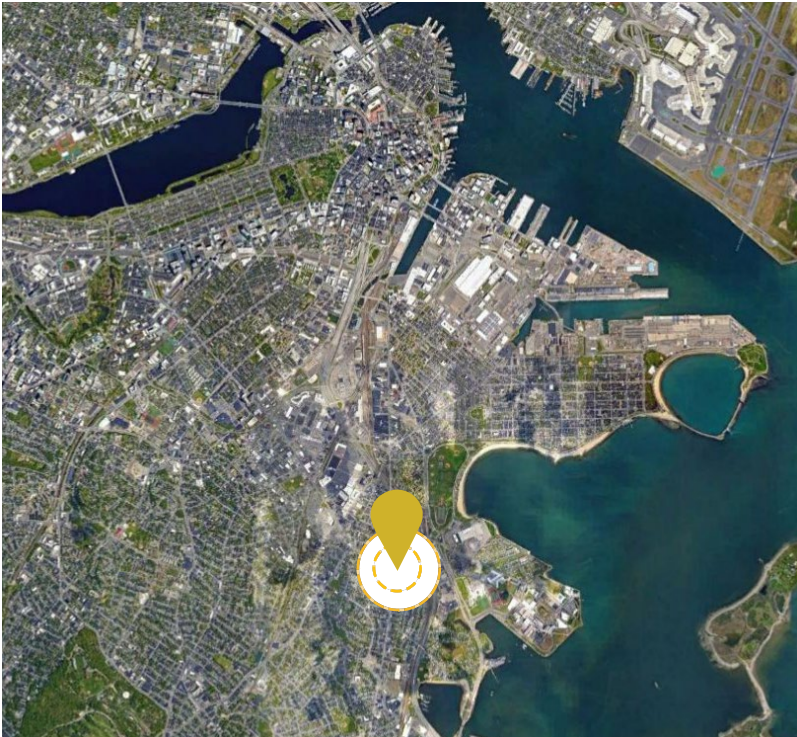




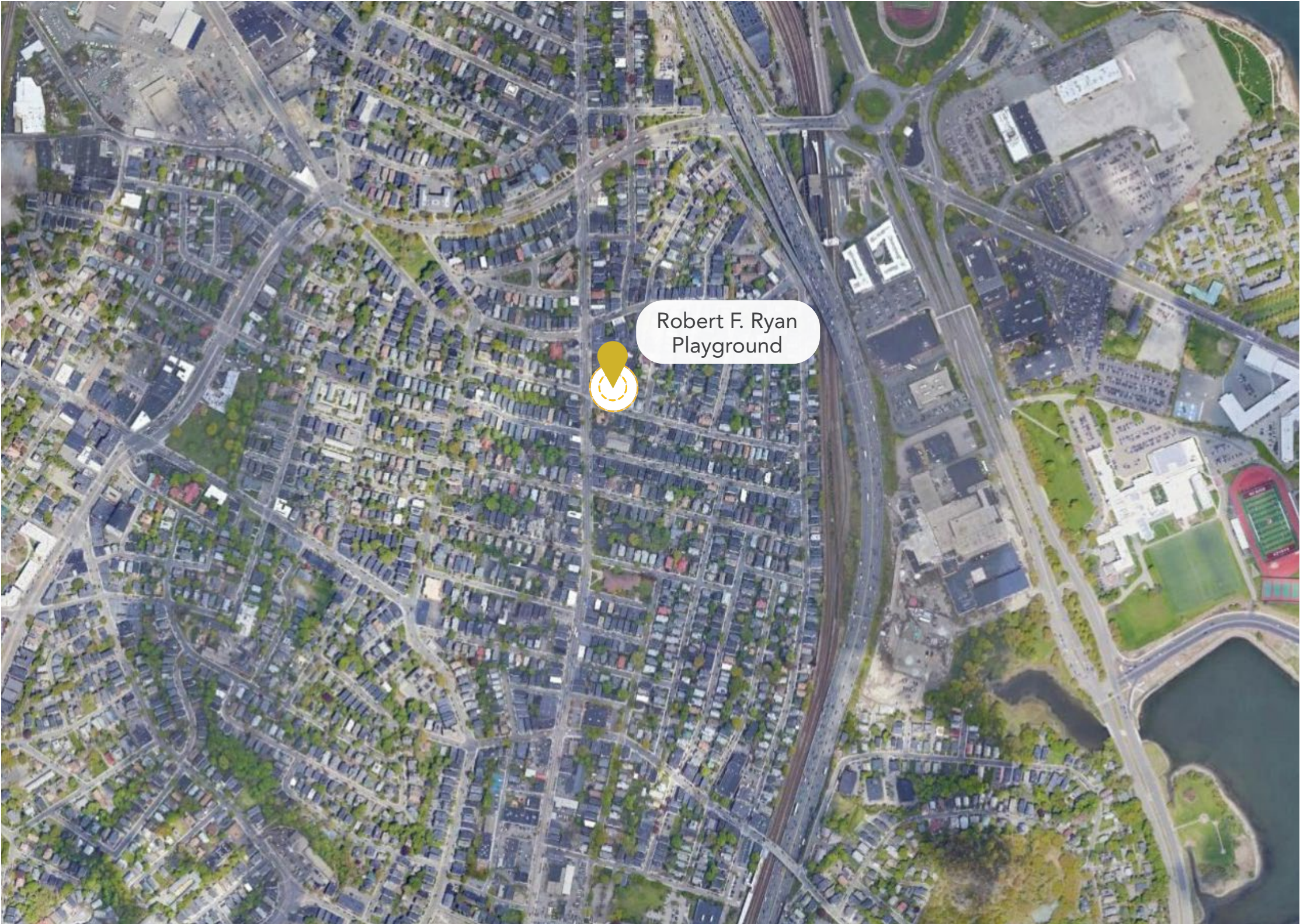
# EXISTING CONDITIONS SUMMARY



SITE LOCATION



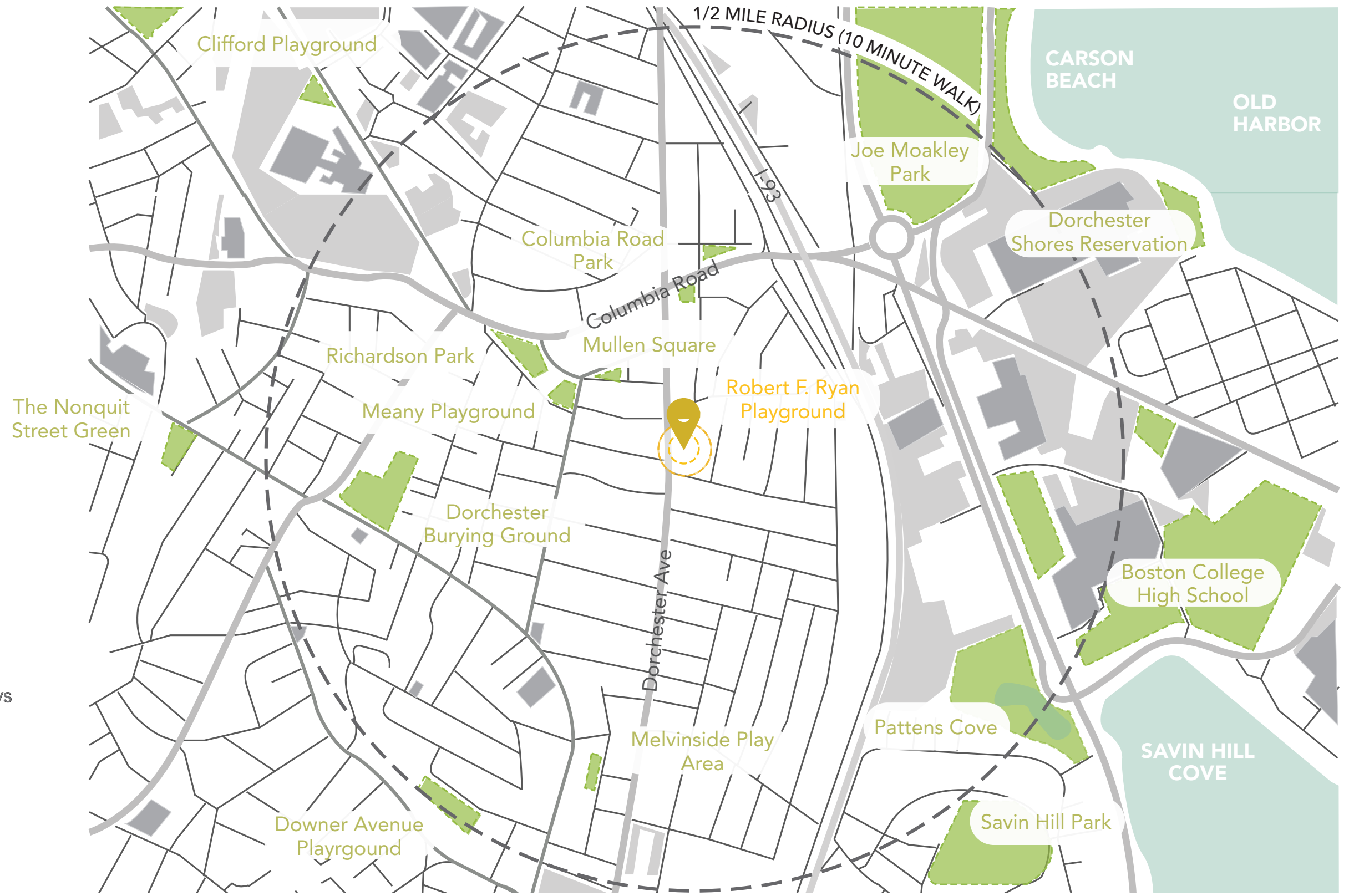
CITY-SCALE AERIAL



NEIGHBORHOOD-SCALE AERIAL







**LEGEND**

- 1/2 Mile Radius
- Streets, Roads, Highways
- Significant Locations
- Bodies of Water
- Open Space
- Project Site Location





SITE CONTEXT







Stairs on Dorchester Avenue



Ramp on Harbor View Street



Stairs on Harbor View Street

## CIRCULATION + ACCESS



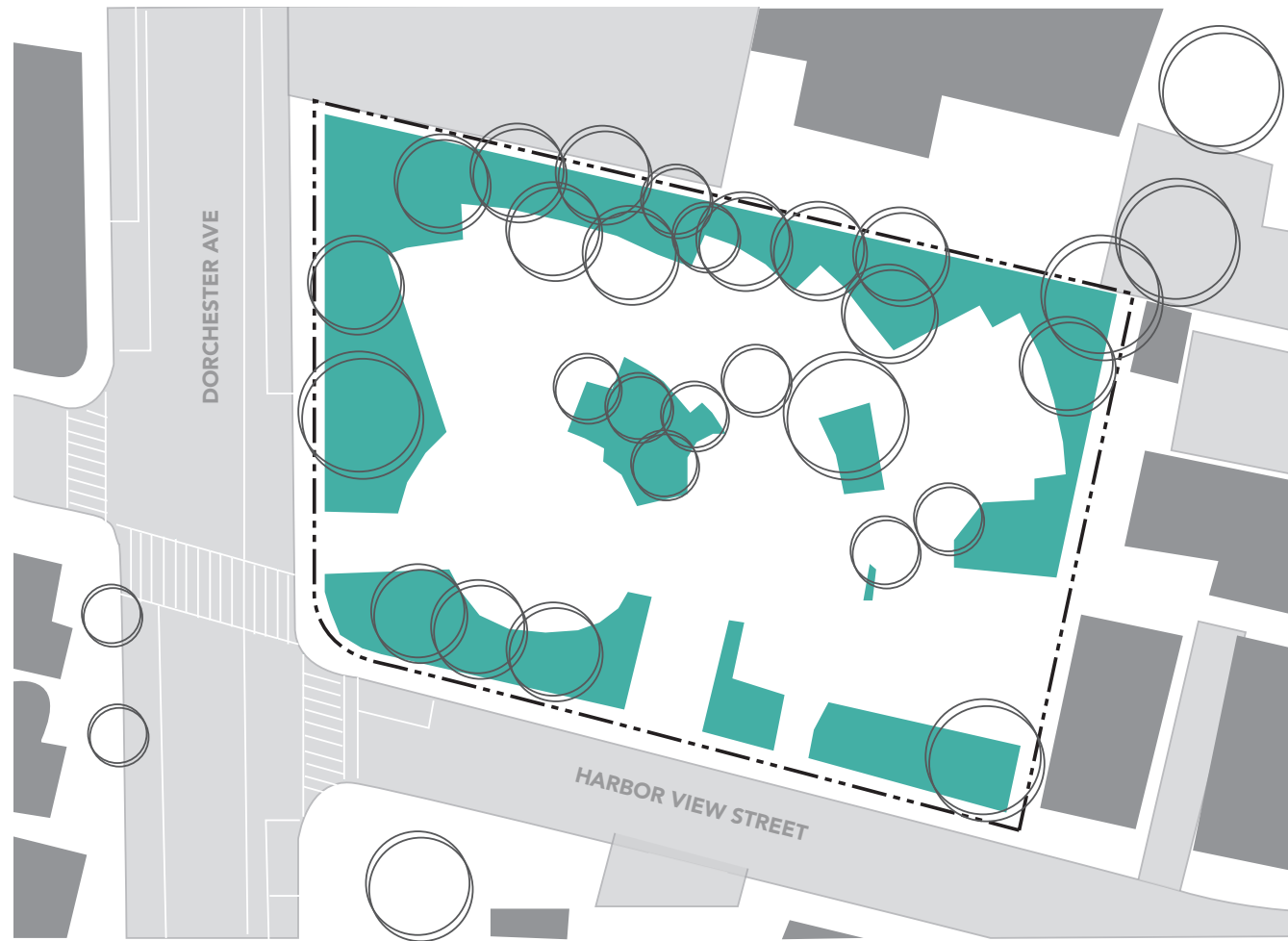
### LEGEND

- Site Boundary
- Residential Buildings
- Pedestrian Park Access
- Surrounding Tree Canopy
- Blue Bike Station
- Vehicular Circulation





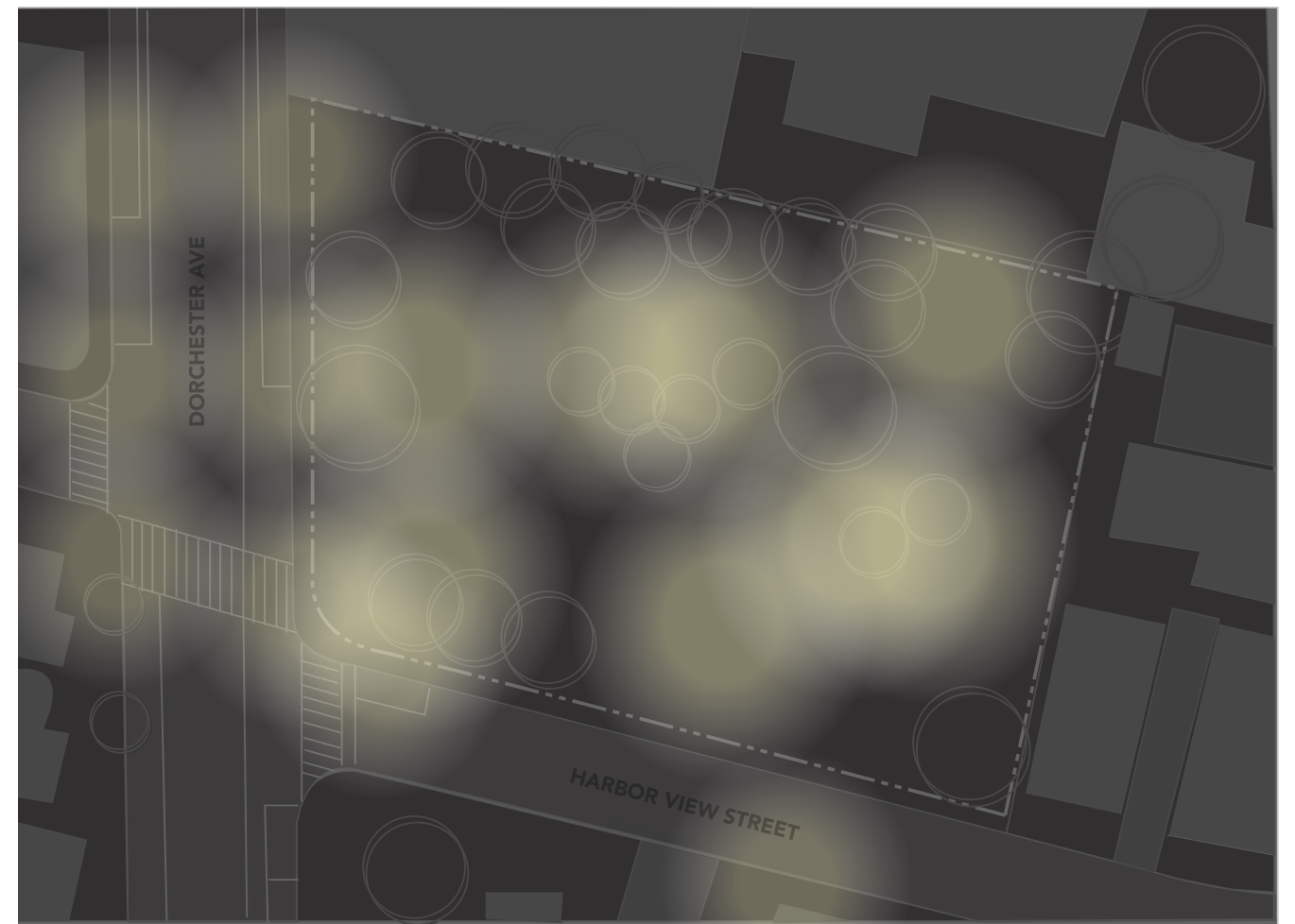
## PERVIOUS SURFACE



### LEGEND

- Site Boundary
- Residential Buildings
- Surrounding Tree Canopy
- Pervious Surfaces (38.2%)

## SITE LIGHTING



### LEGEND

- Site Boundary
- Residential Buildings
- Surrounding Tree Canopy
- Lighting





Norway Maple on Harbor View Street



Green Ash Trees on Harbor View Street



Norway Maple on Dorchester Avenue

## TREE SUITABILITY FOR PRESERVATION



### LEGEND

-  High Suitability For Tree Preservation
-  Moderate Suitability For Tree Preservation
-  Low Suitability For Tree Preservation

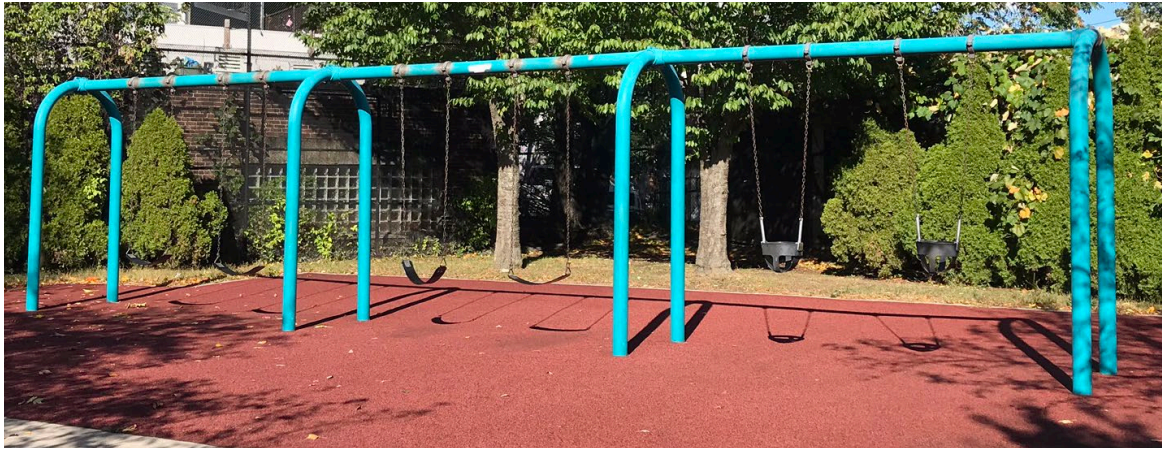


CURRENT SITE PROGRAMMING

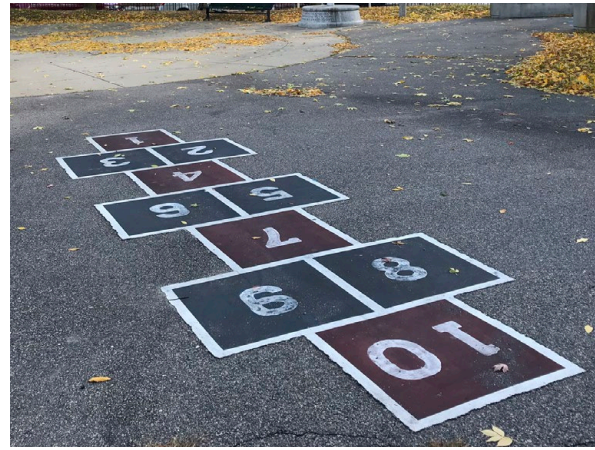




# SITE PROGRAMMING & ELEMENTS



(4) Belt Seat Swings + (2) Bucket Seat Swings



Pavement Games



Drinking Fountain



Flagpole Base Inscription



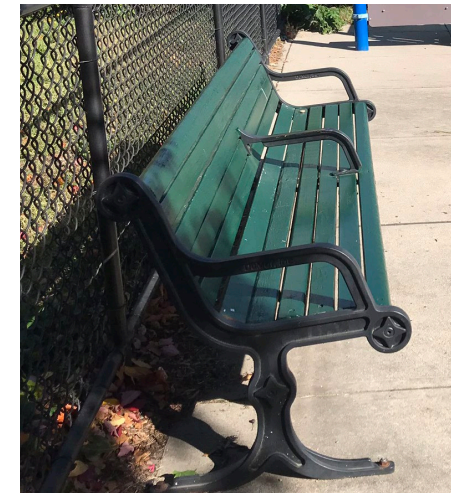
5-12 Play Structure



Entry Gateway



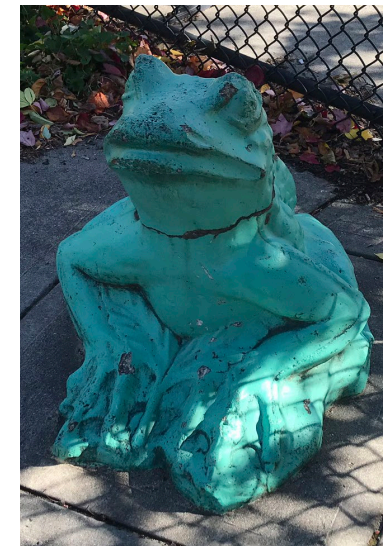
Site Seating



2-5 Play Structure



Water Play with Art Tiles



Site Art

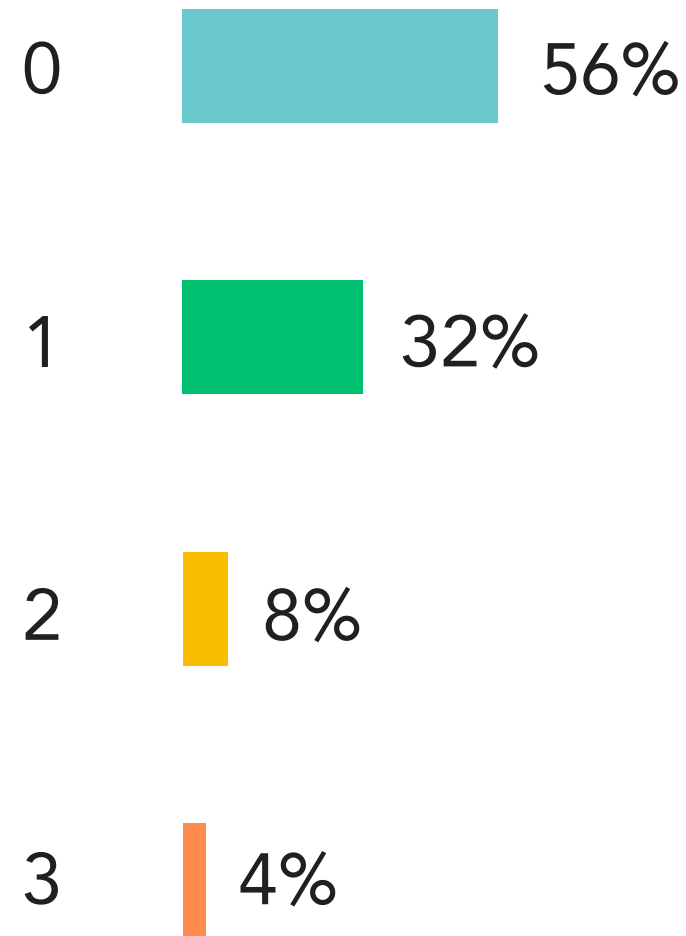




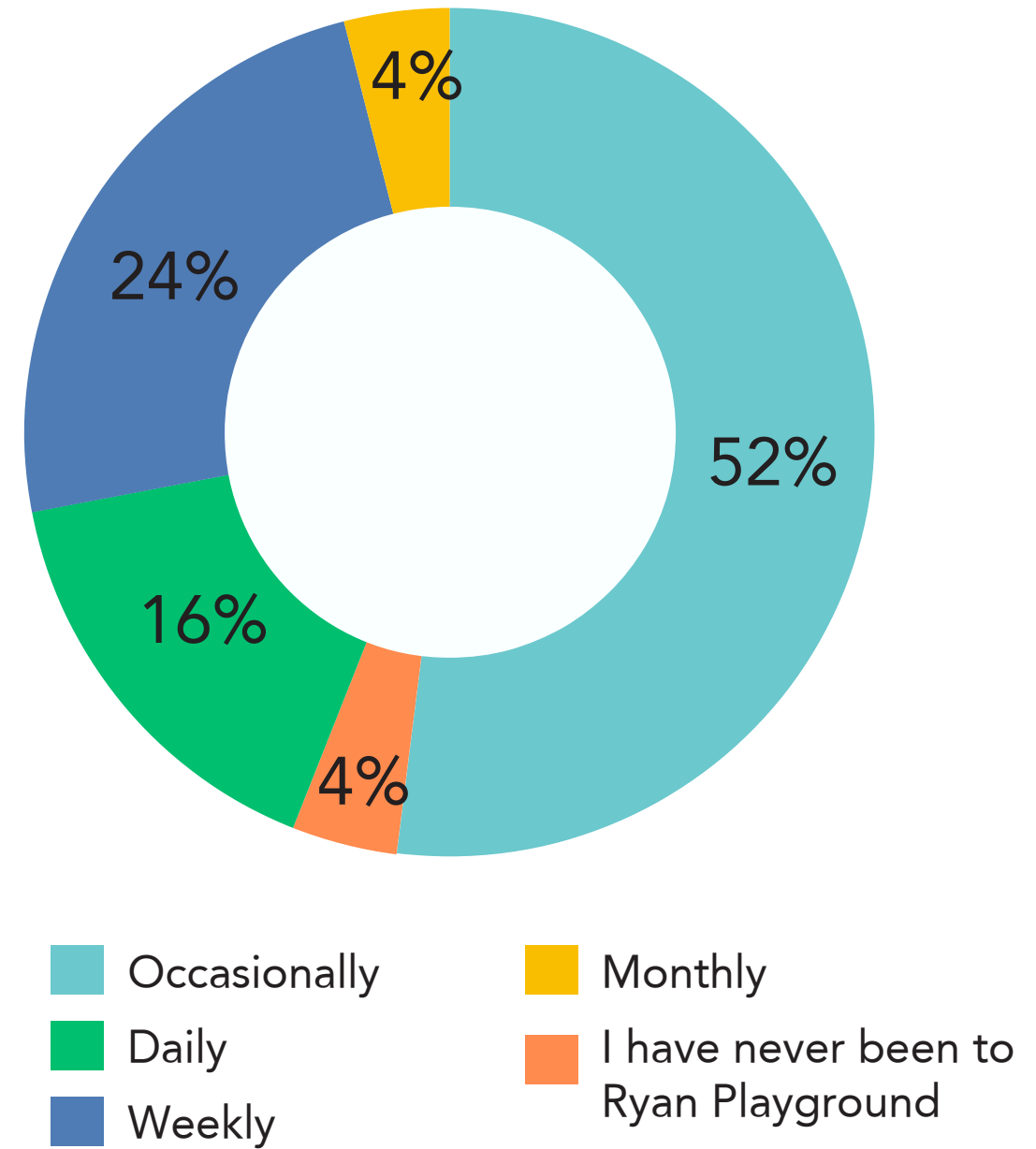
# COMMUNITY MEETING #1 & SURVEY FEEDBACK



Question:  
*How many children are in your household?*

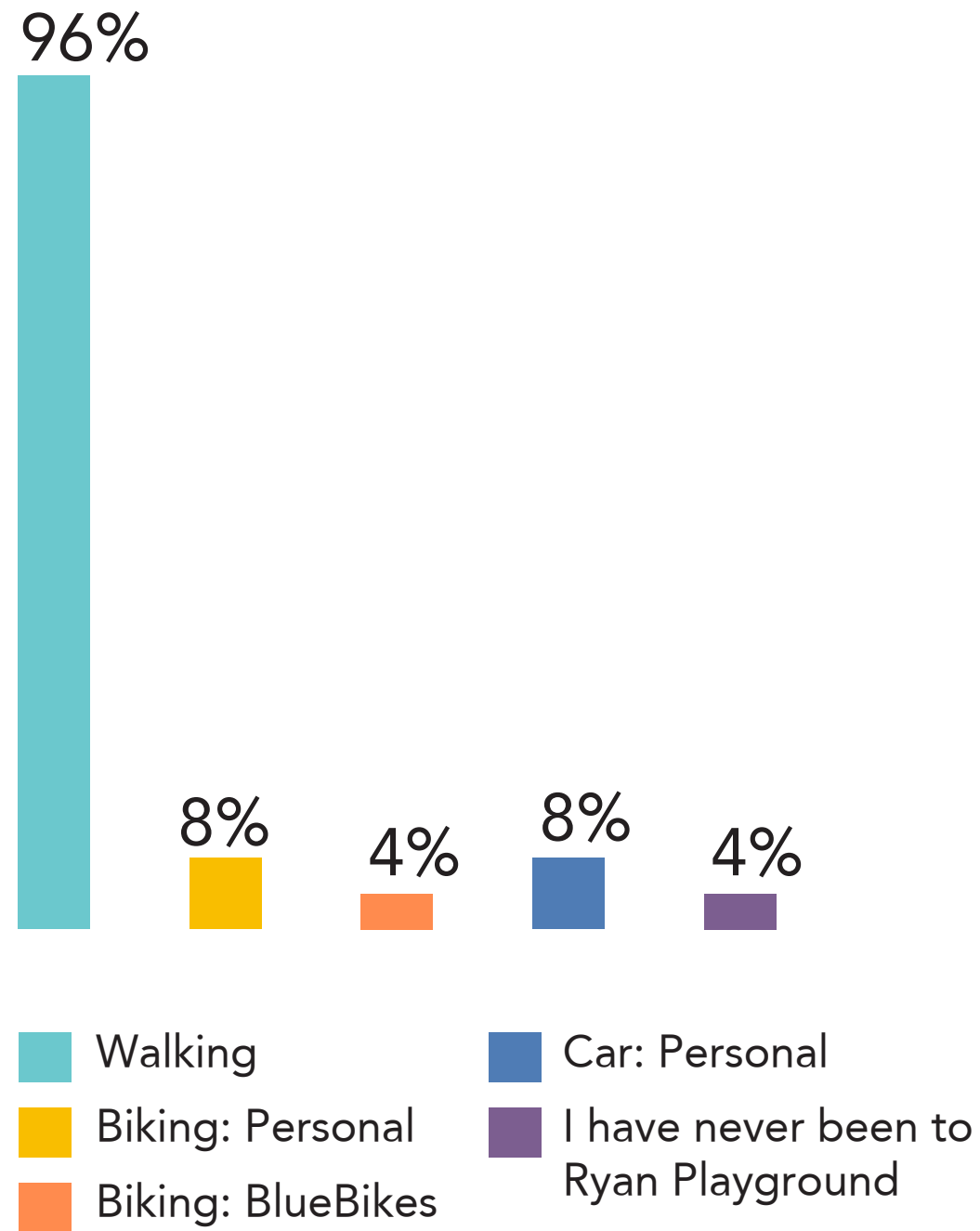


Question:  
*How often do you visit Ryan Playground?*

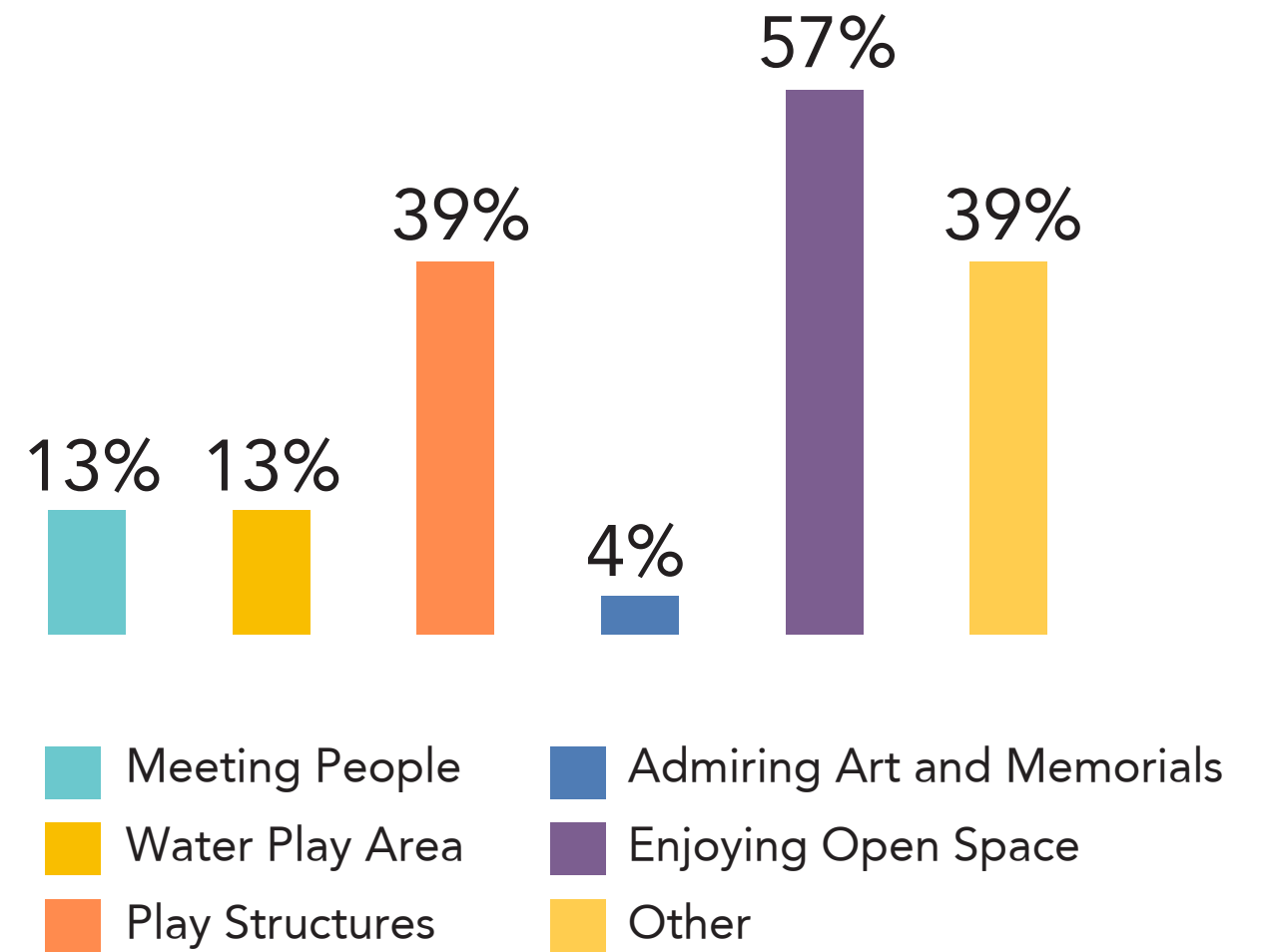




Question:  
How do you get to Ryan Playground?



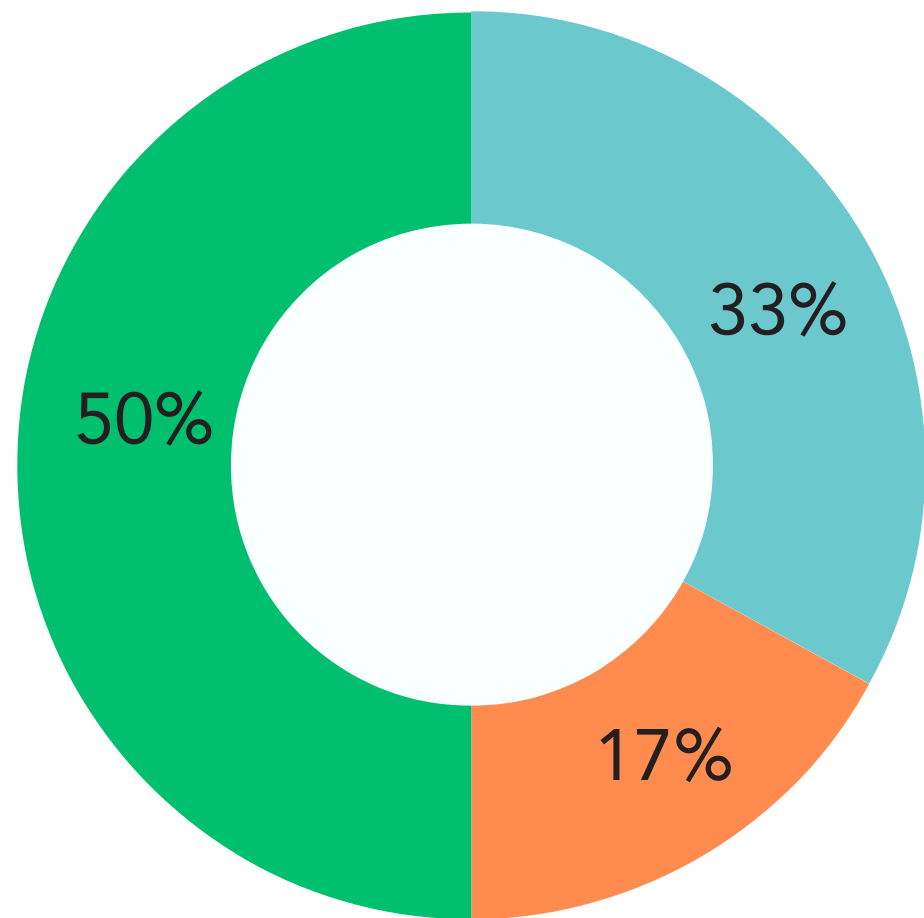
Question:  
What brings you to Ryan Playground currently?  
(choose all that apply)





Question:

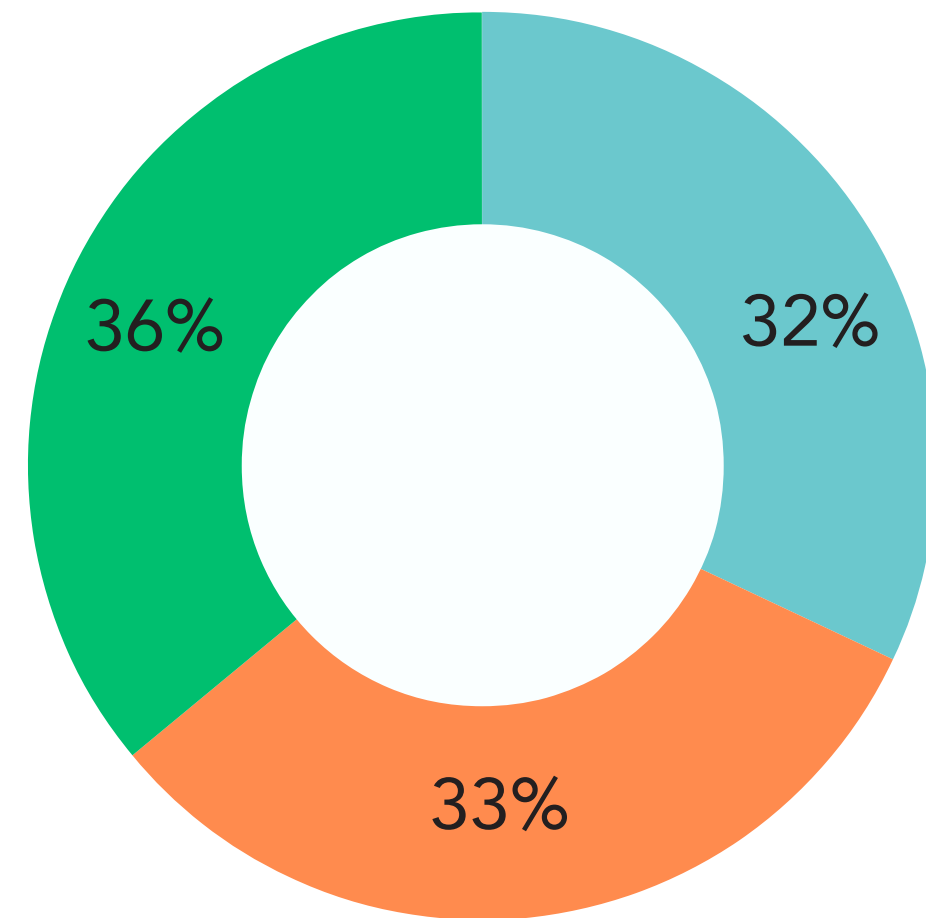
*Should the water play be kept as-is or reimagined by the design team?*



■ No preference      ■ Reimagined by design team  
■ Kept as-is with minor cleanup

Question:

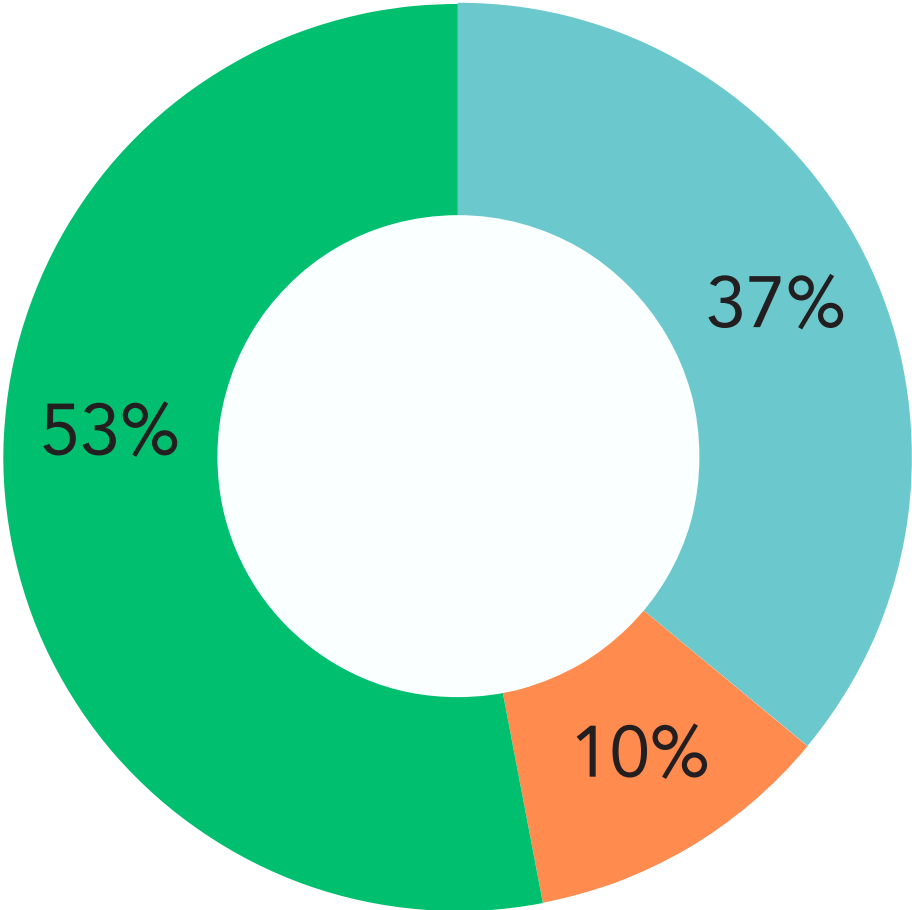
*Should the entry gateway be kept as-is or are you open to a redesign of the entry gateway?*



■ No preference      ■ Reimagined by design team  
■ Kept as-is with minor cleanup

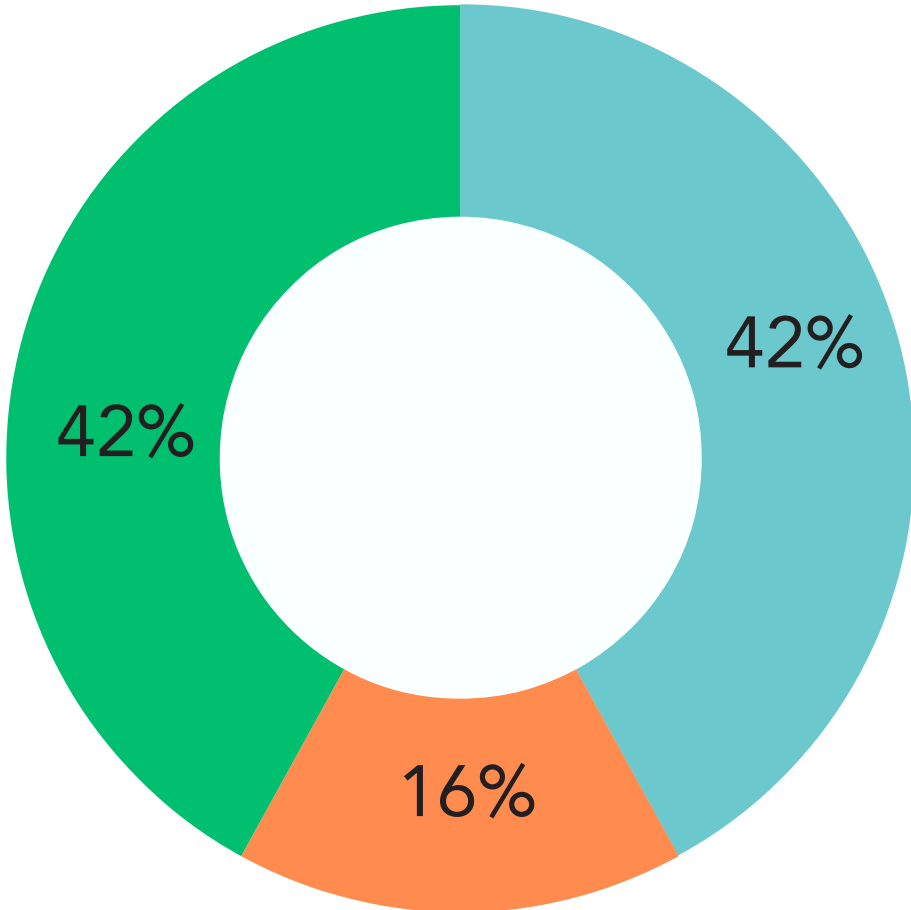


Question:  
*Is it important to you for the art tiles at the water play area to be kept at Ryan Playground?*



Yes No preference No

Question:  
*Is it important for the frog structure to be kept at Ryan Playground?*

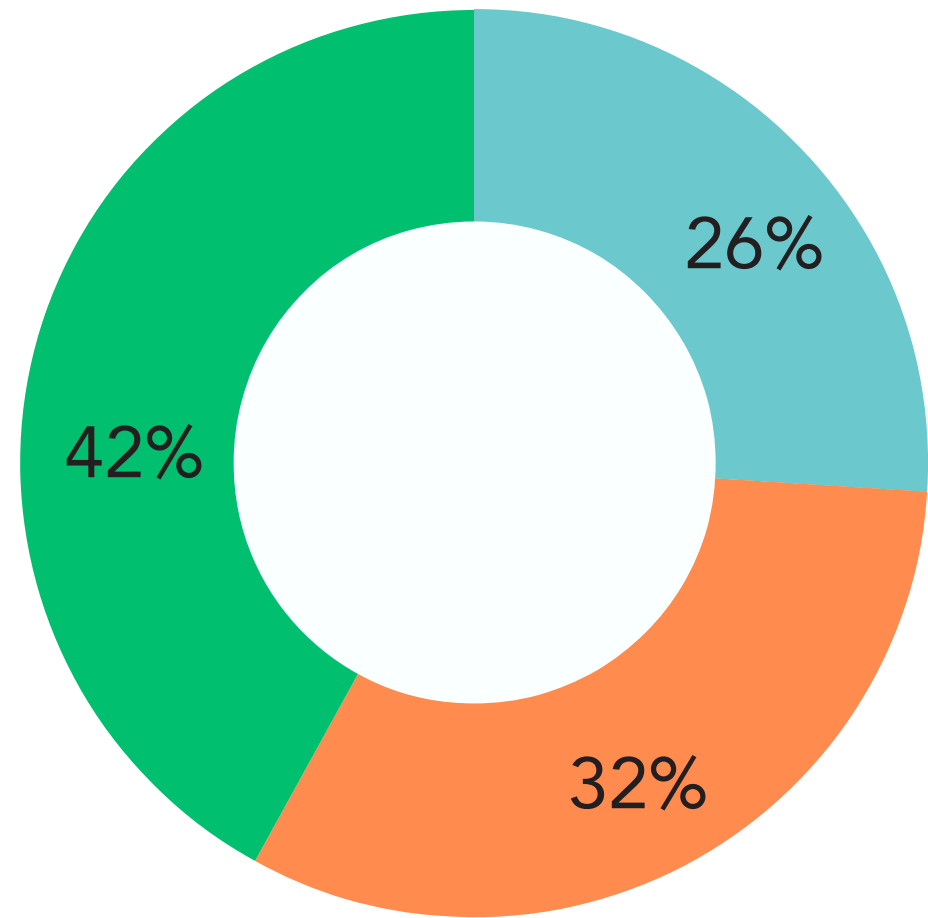


Yes No preference No



Question:

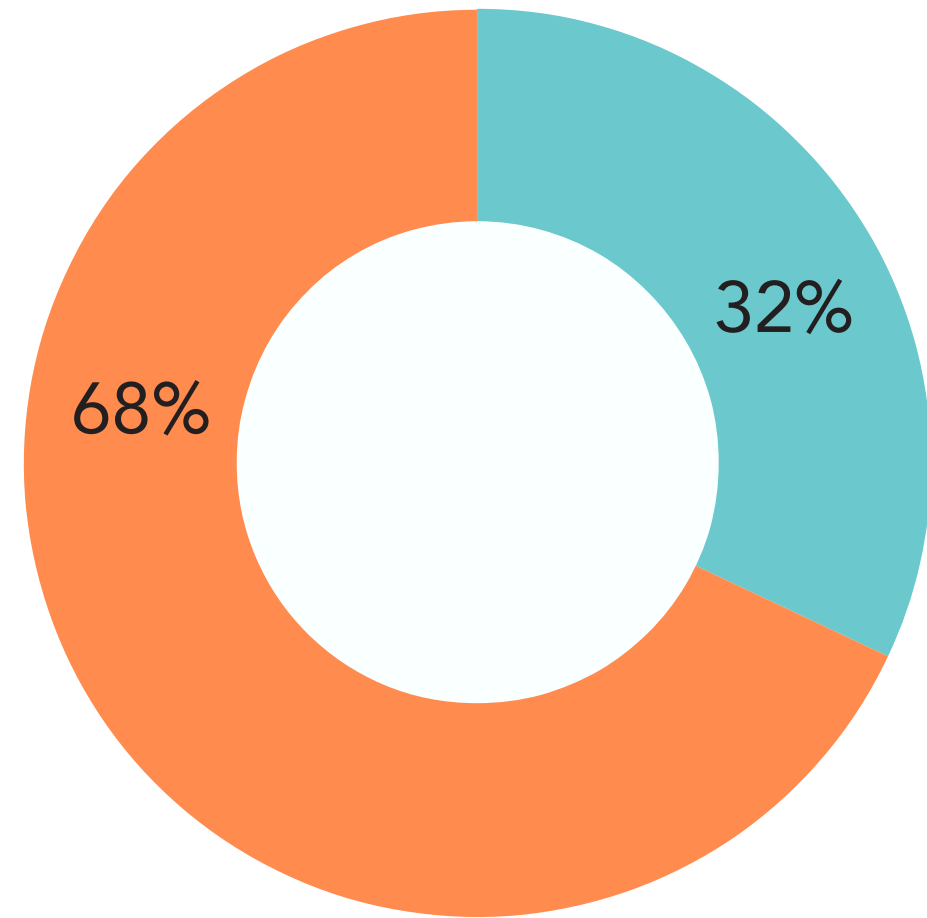
*Is the flagpole an important element that should be kept at Ryan Playground?*



■ Yes      ■ No preference  
■ No

Question:

*Do you feel safe visiting Ryan Playground currently?*



■ Yes  
■ No



Below are a few comments recieved from Survey #1:

- More trees.
- Elements for all ages, such as a shade pavilion or large tables.
- My daughter really likes the fish/ocean themed art.
- Programming such as art in the park or poetry readings.
- A dog area.
- Basketball hoops.
- Additional climbing elements and monkey bars.
- A path for small kids to learn how to ride bikes.





Below are a few comments recieved from during Public Meeting #1:

- Homeless people take over the park in the summer.
- The Dot Art organization uses the park as part of the summer program.
- Game tables are not used for playing games. However, the tables are used for sitting.
- Support for:
  - Elements for kids of all ages.
  - A space large enough for adult programming, such as yoga or Zumba.
  - Half-court basketball.
  - A larger grassy area.
  - Expanded water play.
  - Inclusive play.

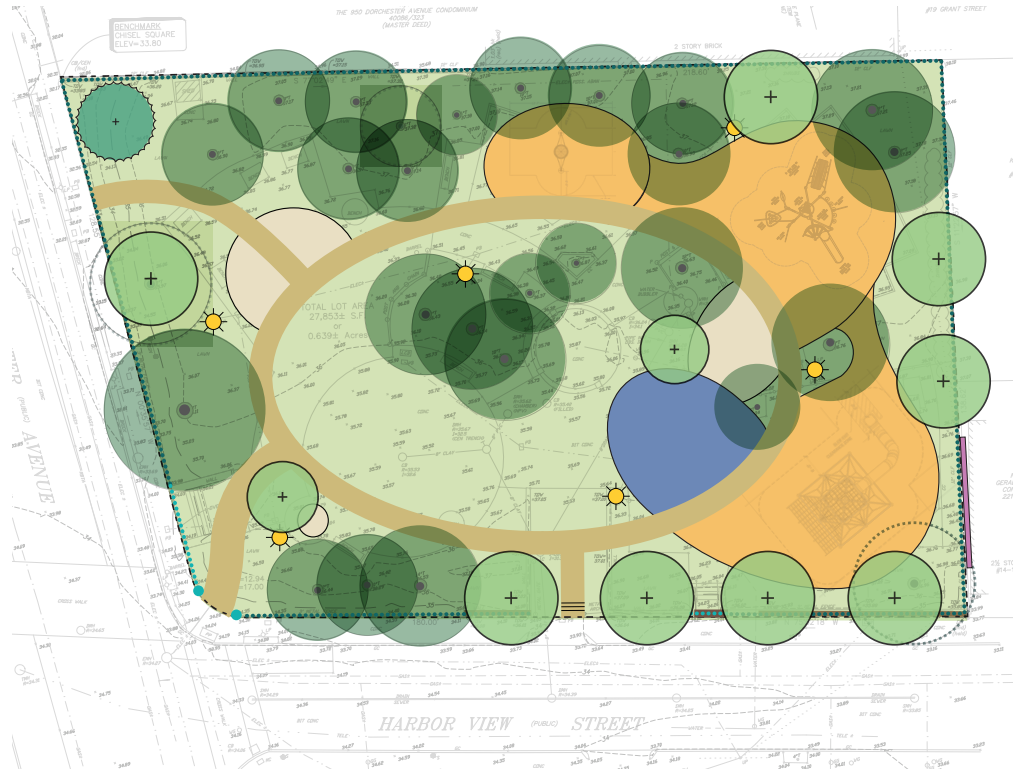




# PARK CONCEPT DIAGRAMS



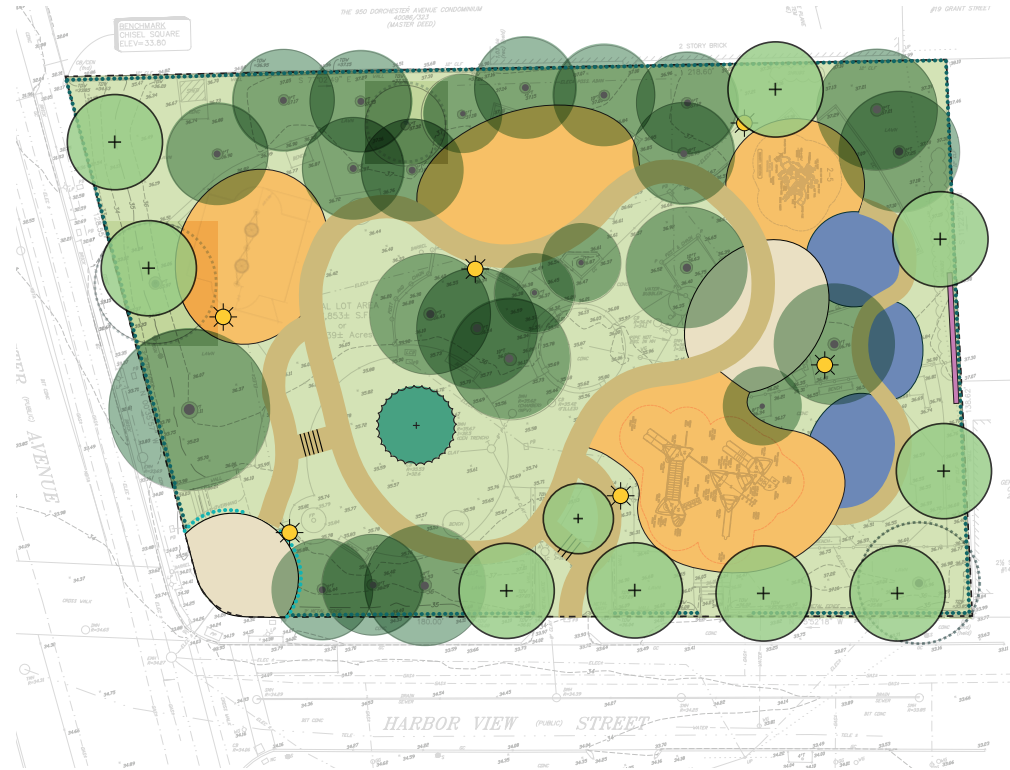
CONCEPT A:  
GREAT LAWN



KEY ATTRIBUTES

- large central lawn with loop path
- new main entry gateway
- three entrances
- connected play areas
- separate seating areas

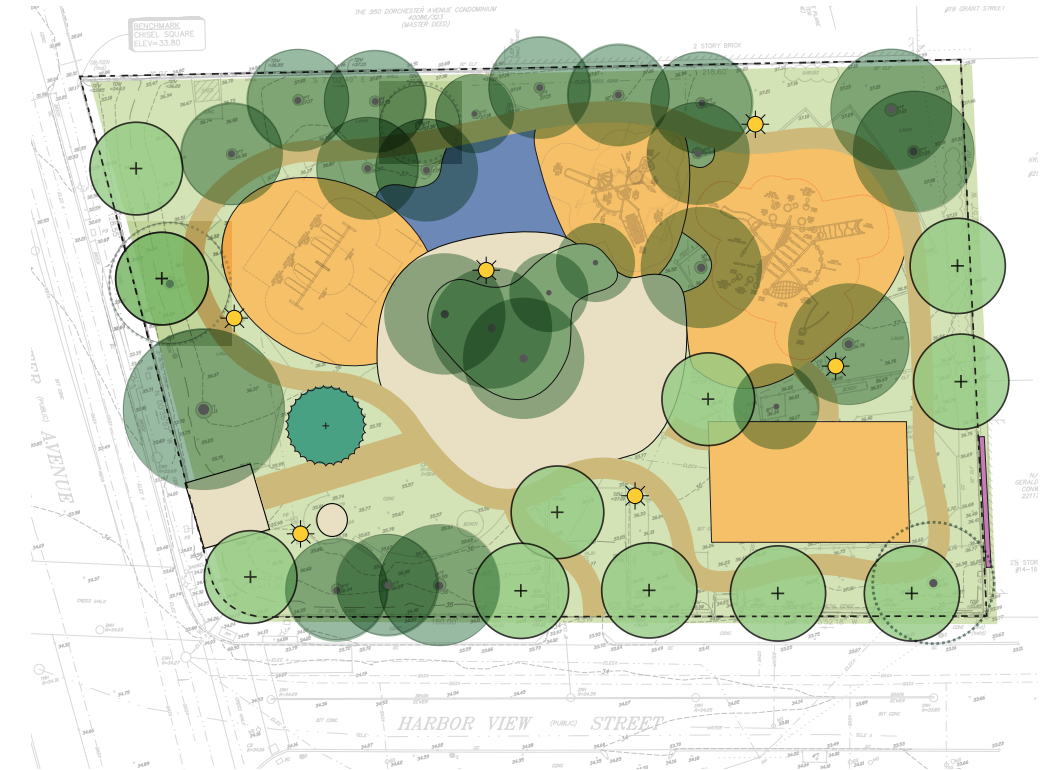
CONCEPT B:  
MEANDERING PATHS



KEY ATTRIBUTES

- meandering central path
- main entry plaza
- smaller splash pads connected with a path
- separated swing area
- skateboard area for older children

CONCEPT C:  
PLAY LOOP

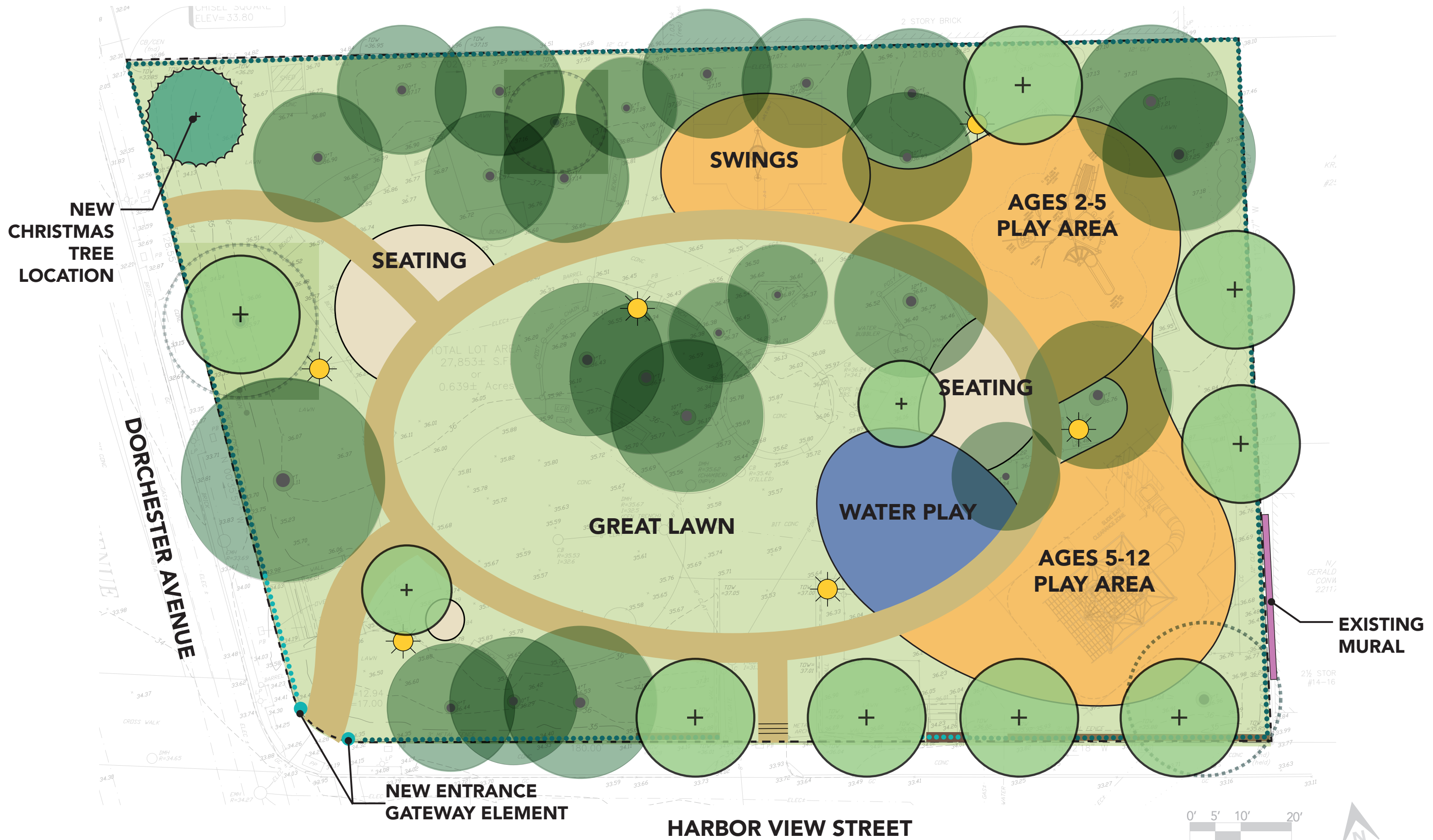


KEY ATTRIBUTES

- meandering perimeter path
- reuses existing entrance gateway
- central plaza with tables
- connected play areas
- half court basketball for older children

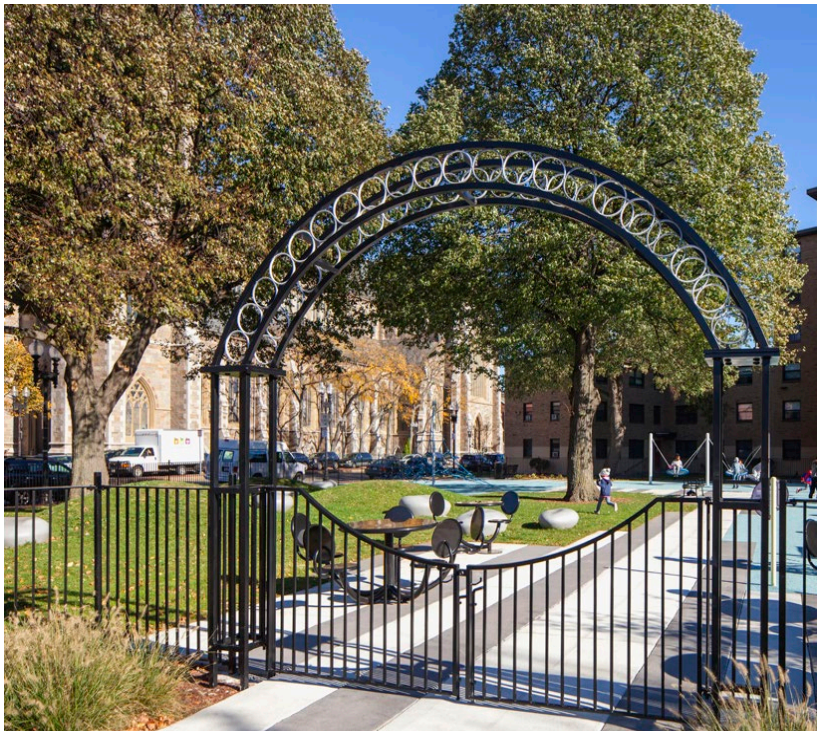


# CONCEPT A: GREAT LAWN





CONCEPT A: GREAT LAWN



Entry Arch or Gateway



Water Play Course



Central Open Lawn

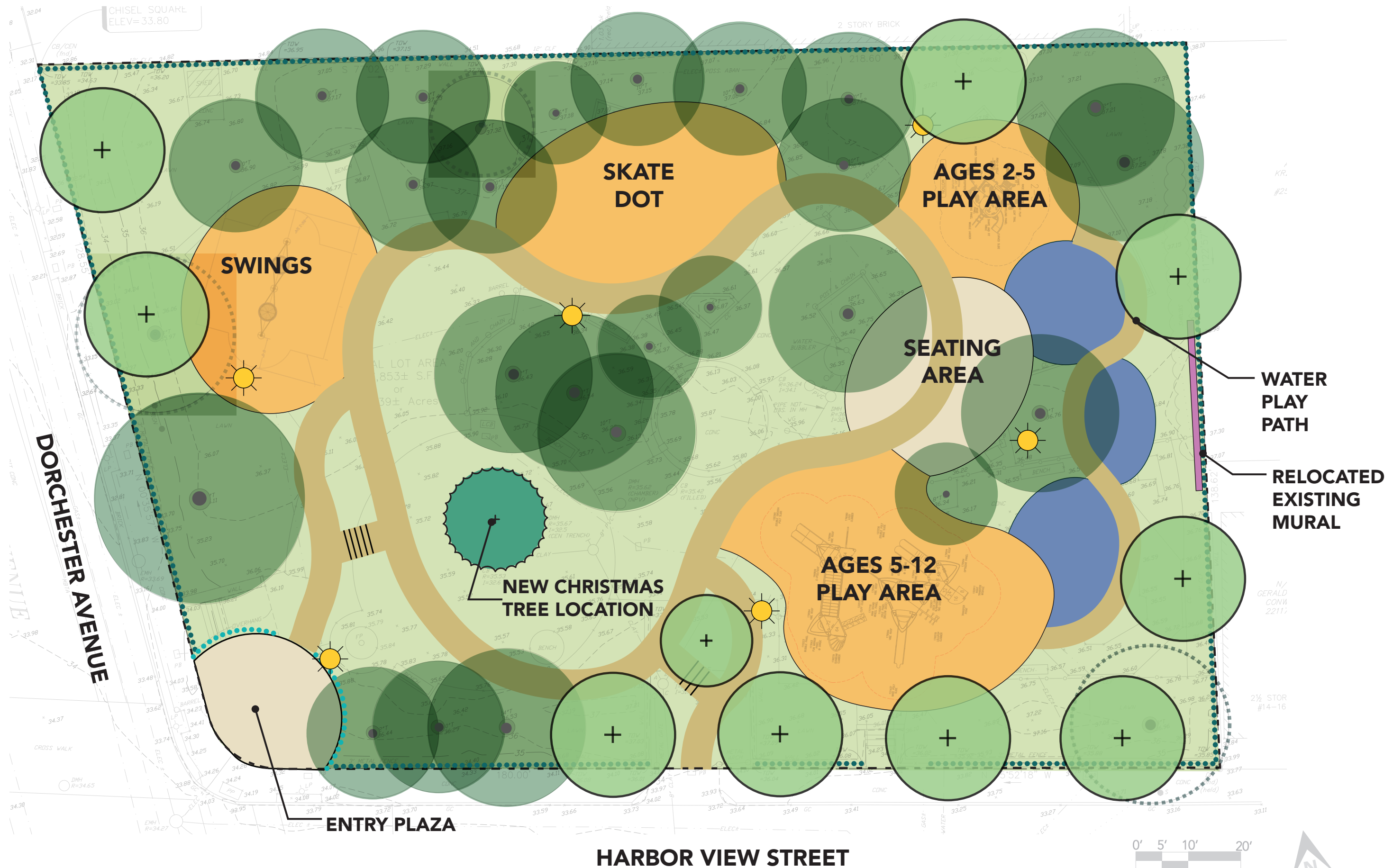


Loop Path for Bikes and Walking



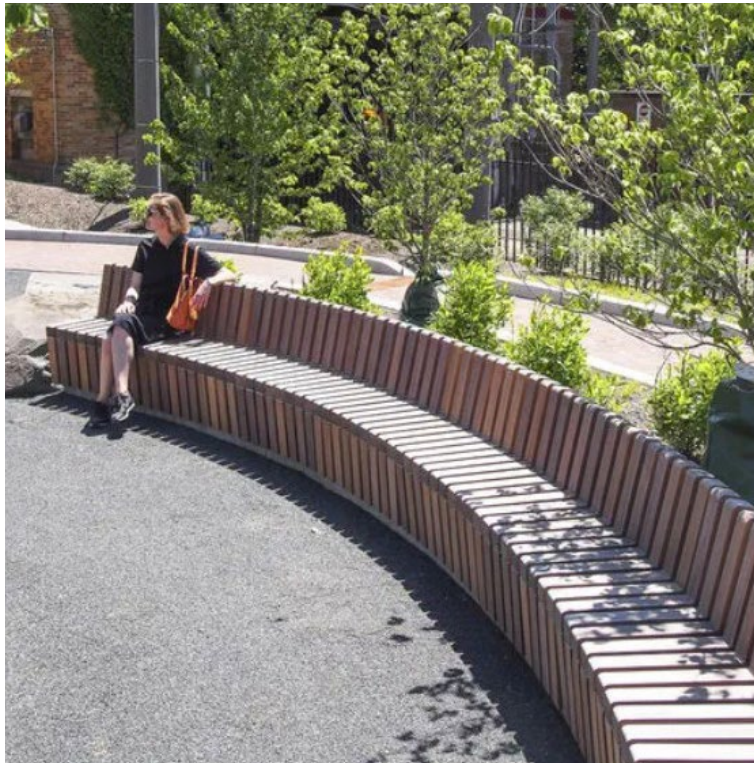


# CONCEPT B: MEANDERING PATHS





CONCEPT B: MEANDERING PATHS



Entry Gateway Plaza with Built-in Seating



Skate Dot

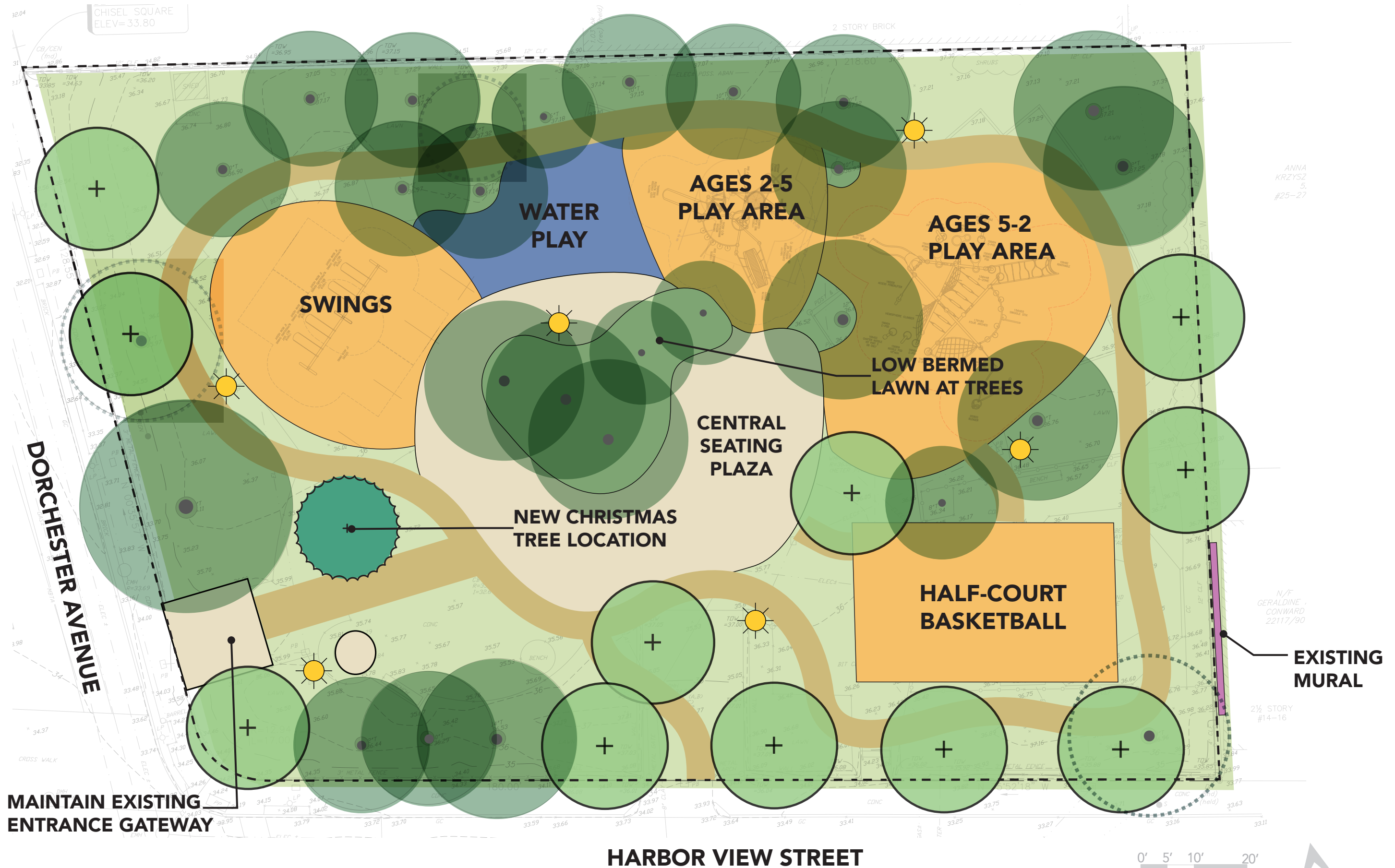


Small Splash Pads linked by a Common Path





# CONCEPT C: PLAY LOOP

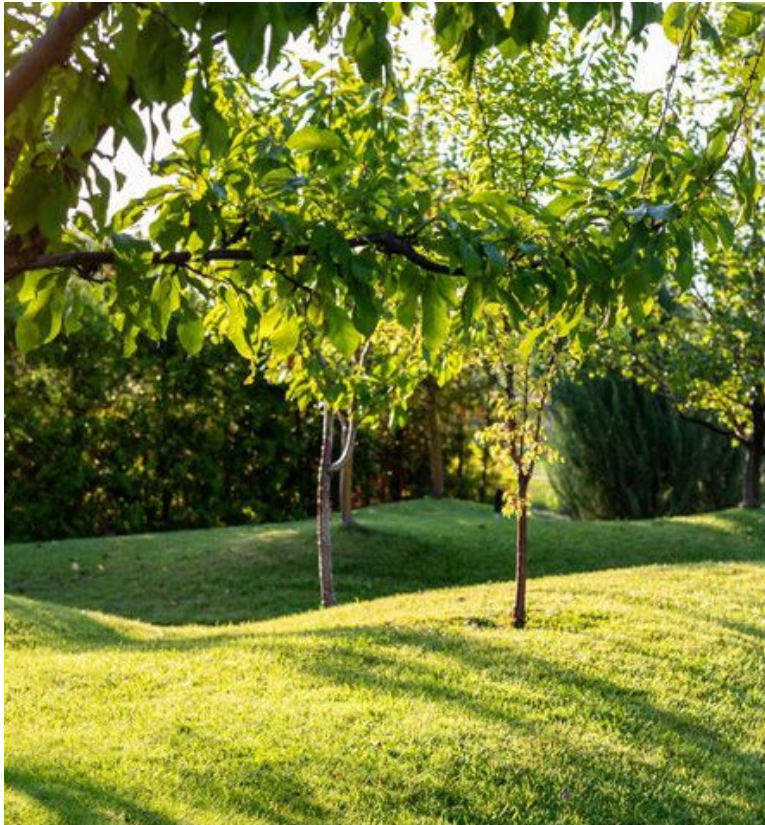




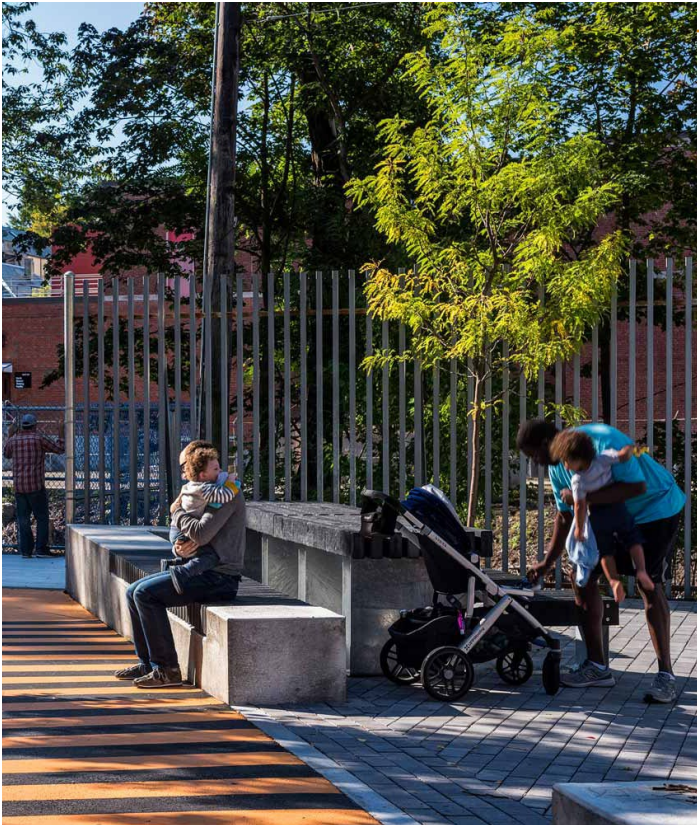
CONCEPT C: PLAY LOOP



Retain Existing Entry Structure



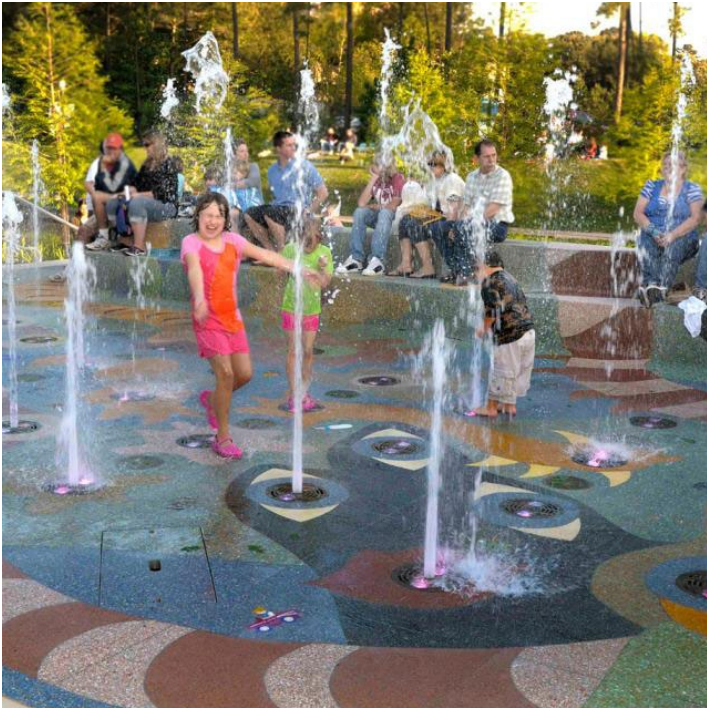
Low Lawn Berm



Central Seating Plaza



Half Court Basketball



Splash Pad with Painted Graphics





# PLAY ACTIVITY TYPE



CLIMBING





SLIDING





SWINGING



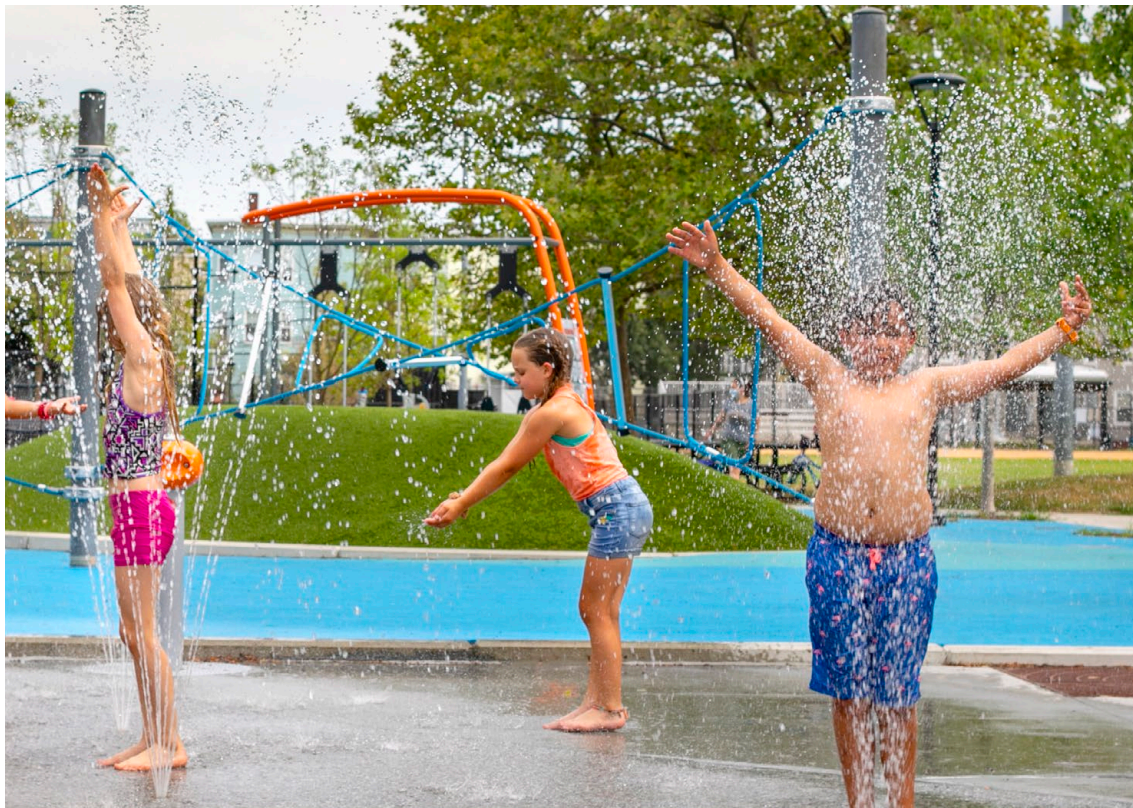


SPINNING + SWAYING





WATER PLAY









PLAY STRUCTURES





OTHER PARK ACTIVITIES



Bike Loop



Walking Paths



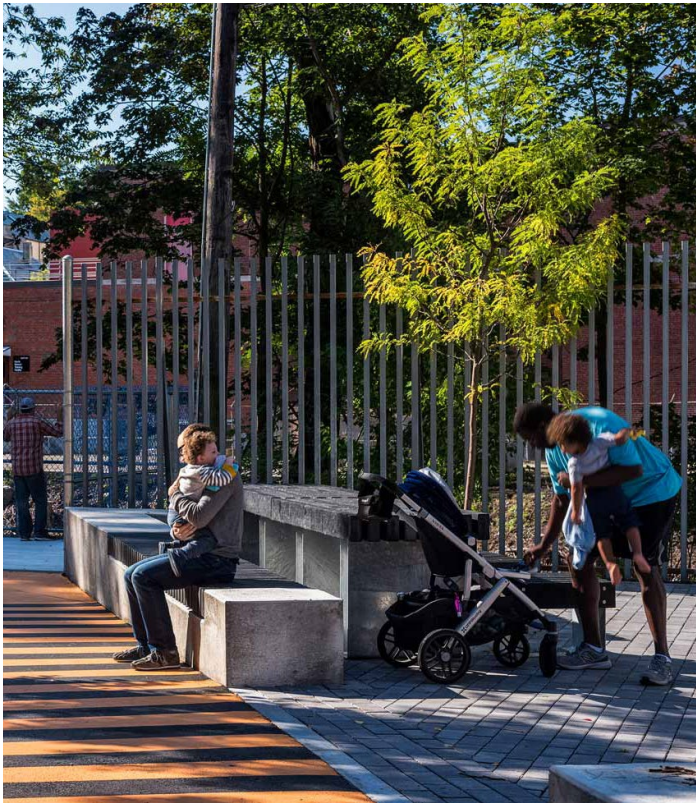
Basketball



Skateboarding



Seating





# SAFETY SURFACE AND PLAY EQUIPMENT COLORS



RESILIENT RUBBER PATTERNS & COLORS





PLAY COLOR THEMES - WARM COLORS



Warm 1



Warm 3



Warm 2



Warm 4





PLAY COLOR THEMES - COOL COLORS



Cool 1



Cool 3



Cool 2





PLAY COLOR THEMES - NATURAL COLORS



Natural 1



Natural 3



Natural 2



Natural 4

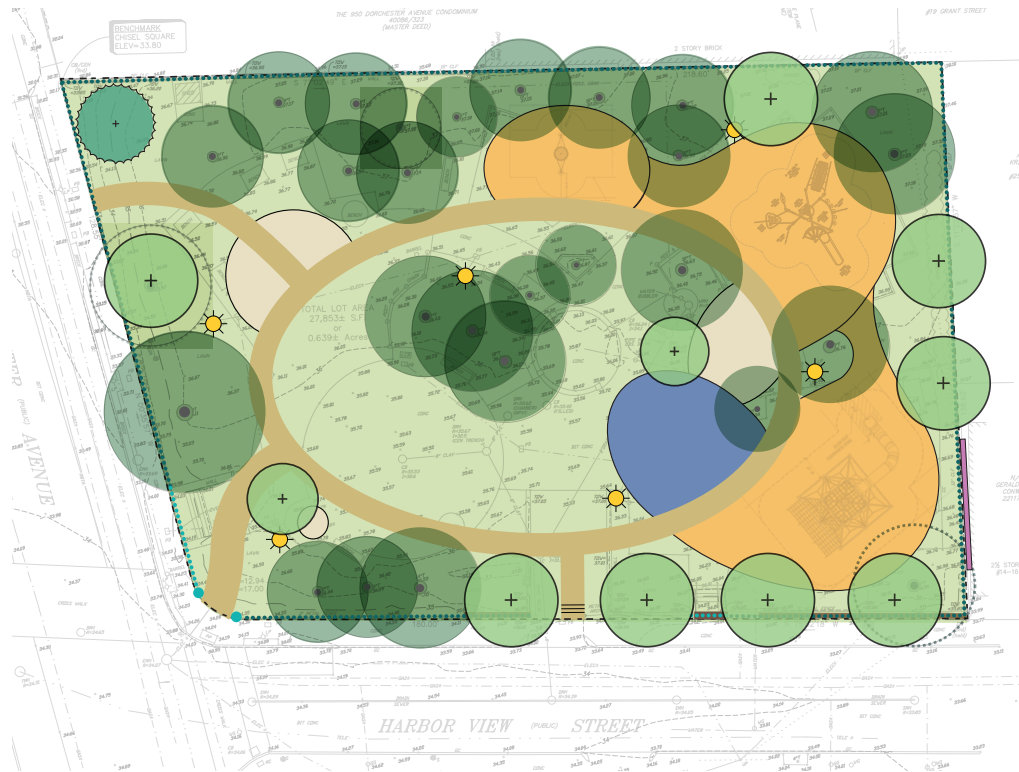




# LISTENING + DISCUSSION



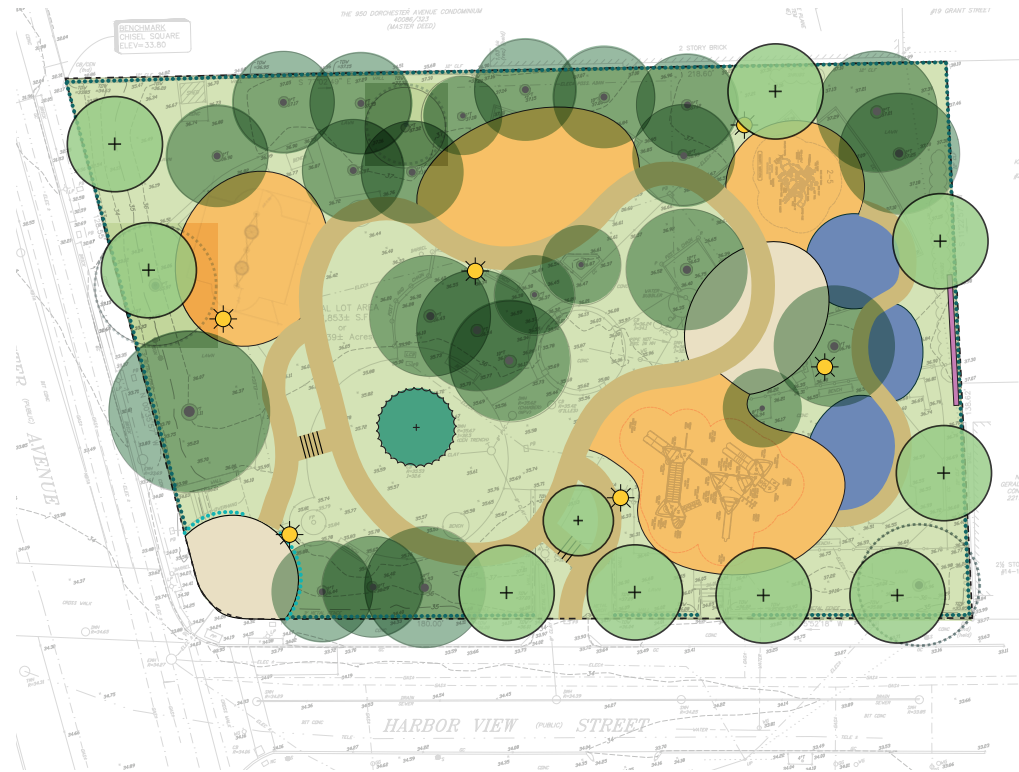
CONCEPT A:  
GREAT LAWN



KEY ATTRIBUTES

- large central lawn with loop path
- new main entry gateway
- three entrances
- connected play areas
- separate seating areas

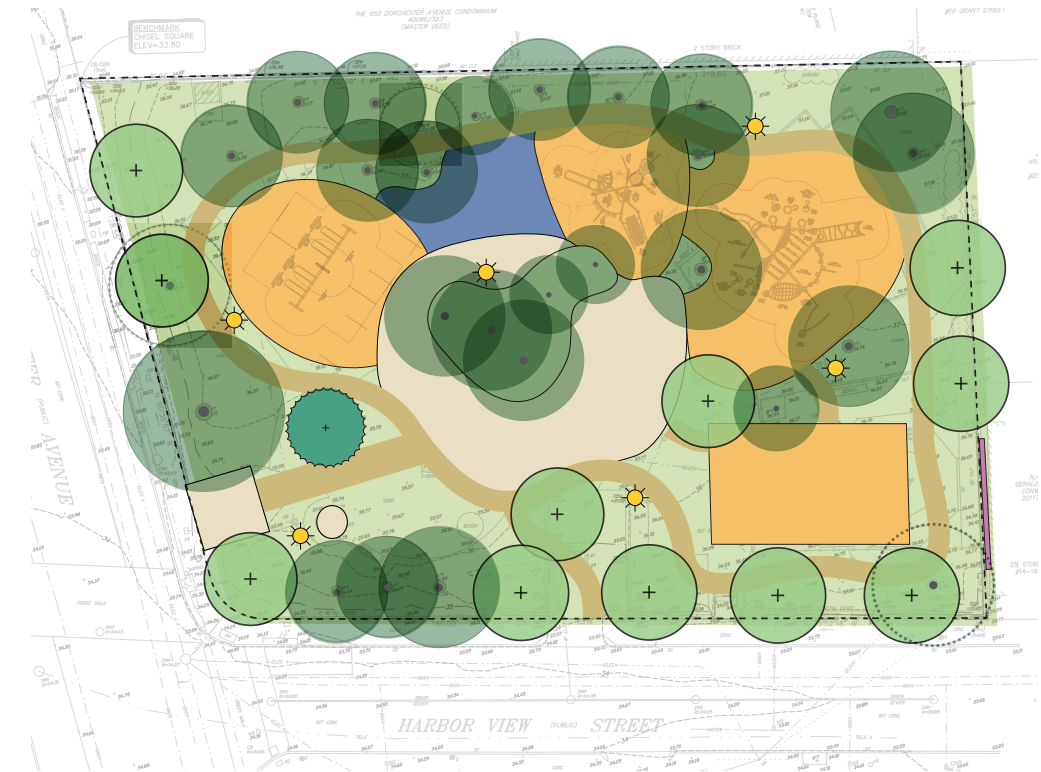
CONCEPT B:  
MEANDERING PATHS



KEY ATTRIBUTES

- meandering central path
- main entry plaza
- smaller splash pads connected with a path
- separated swing area
- skateboard area for older children

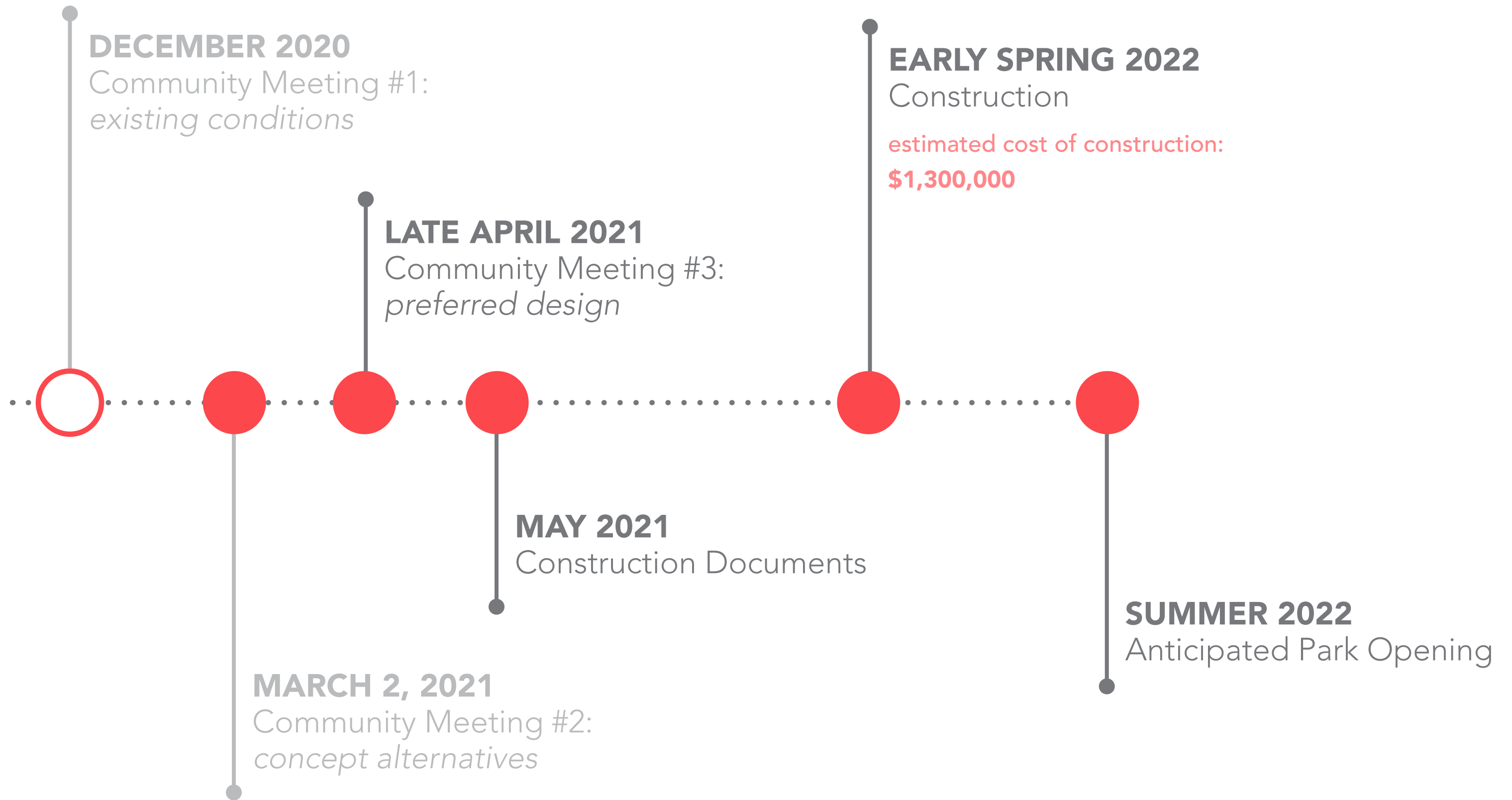
CONCEPT C:  
PLAY LOOP



KEY ATTRIBUTES

- meandering perimeter path
- reuses existing entrance gateway
- central plaza with tables
- connected play areas
- half court basketball for older children







# THANK YOU FOR JOINING!

**PLEASE VISIT THE WEBSITE:**

[https://www.boston.gov/departments/parks-and-recreation/  
improvements-ryan-playground](https://www.boston.gov/departments/parks-and-recreation/improvements-ryan-playground)



Scan me with your  
phone's camera!

**PLEASE TAKE THE SURVEY:**

<https://www.surveymonkey.com/r/RyanPlayground-2>



Scan me with your  
phone's camera!

## WE LOOK FORWARD TO HEARING FROM YOU!