

STEELE RESIDENCE

60 WEST CEDAR STREET

BOSTON, MA

FOR BHAC REVIEW

03.25.21

CONTENTS:

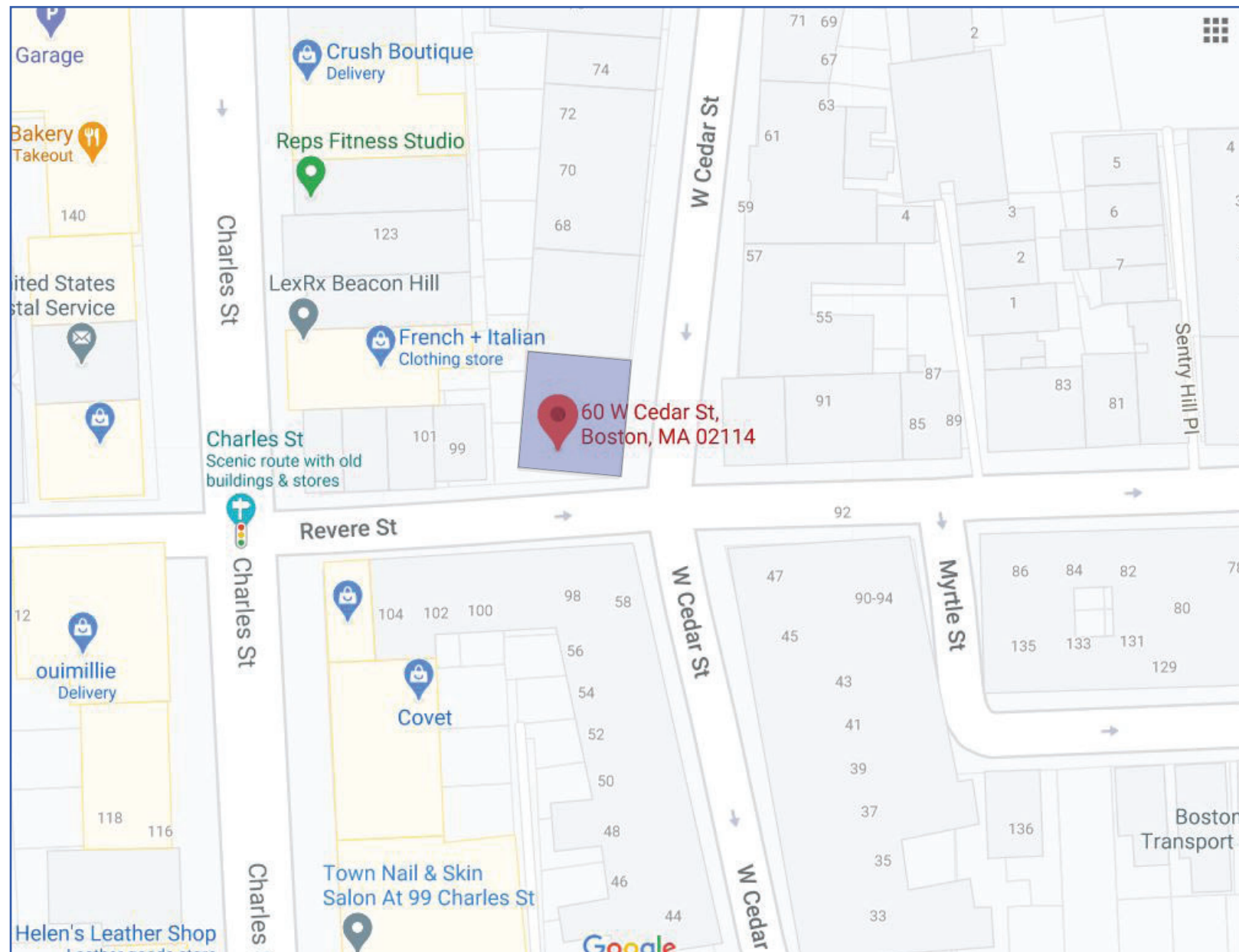
PAGE 1 COVER

PAGE 2 LOCUS PLAN

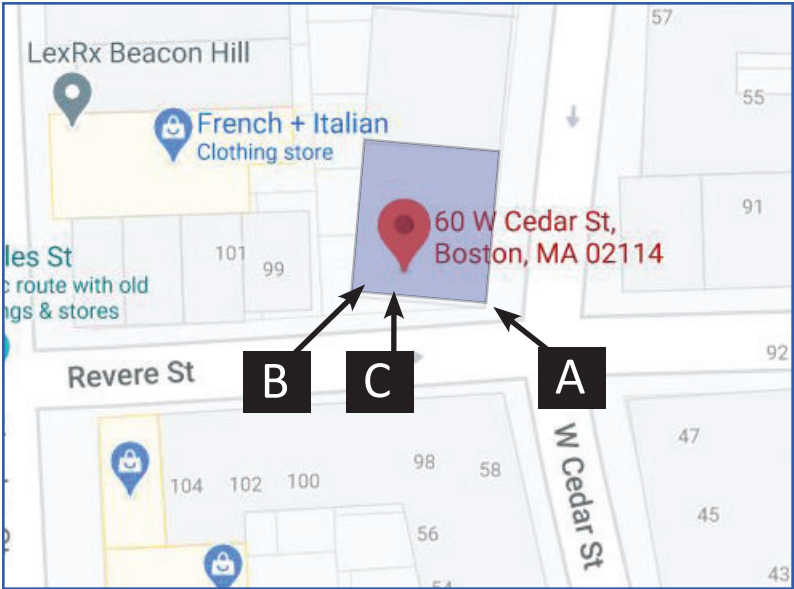
PAGE 3 PHOTOS FROM PUBLIC WAY BUILDING

PAGE 4 DETAIL PHOTOS OF EXISTING BRICK MOLD AND SHUTTERS

PAGE 5 SHUTTER DRAWINGS



LOCUS VIEW



We are seeking permission to replace in kind, the brick mold at all windows, where needed for proper support of shutter hardware. In all cases, we will keep existing brick mold and repair rather than replace. We are also seeking permission to replace 17 shutters that are rotting and paint is peeling off. The shutters are not original to the building and are in an advanced state of deterioration. We propose to replace with Beech River Mill Beacon Hill Style Shutters. All shutters and brick mold with be painted to match existing Ben Moore soft gloss black.

PHOTO KEY



A

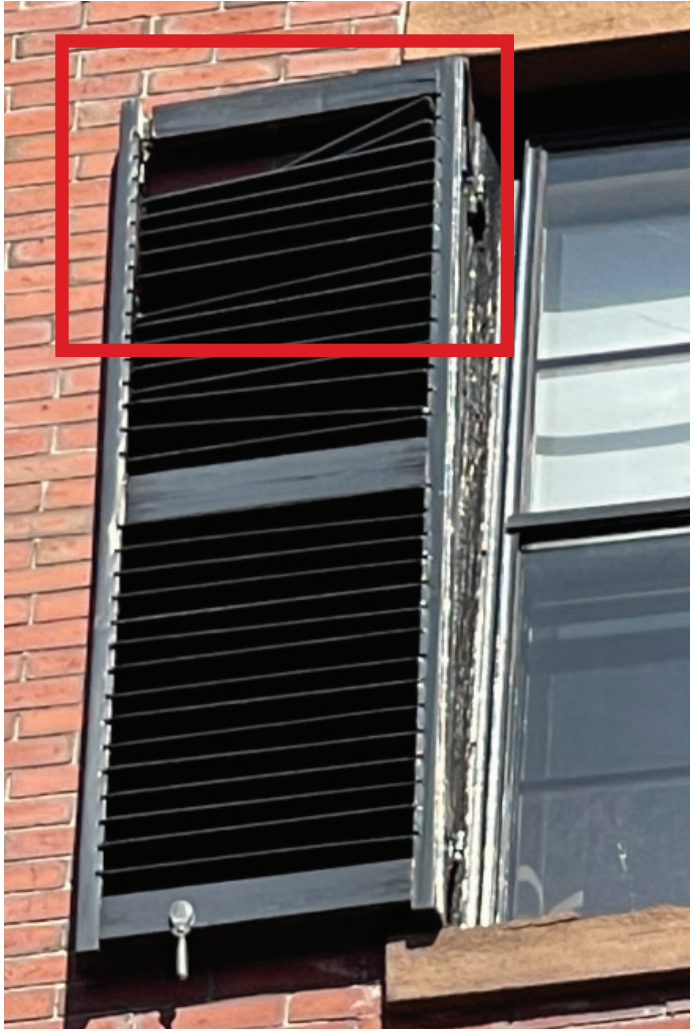


B





BRICK MOLD IMAGES



SHUTTER IMAGES

Beech River Mill Beacon Hill Style Shutter drawings

