

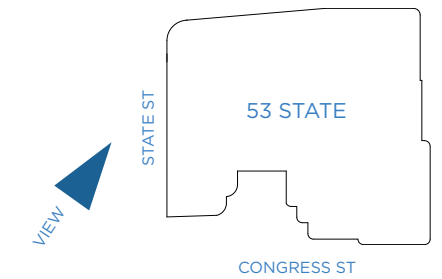
Amalgamated Bank : Boston Offices @ 53 State Street

CONTEXT PHOTO - VIEW OF STATE STREET ELEVATION



04.23.21





Amalgamated Bank : Boston Offices @ 53 State Street

EXISTING SIGNAGE AT STATE STREET ELEVATION



04.23.21





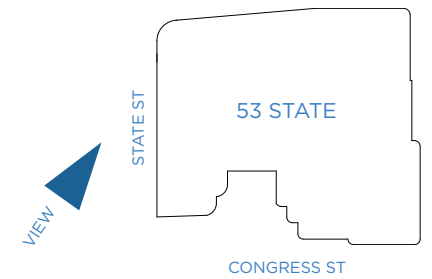
Amalgamated Bank : Boston Offices @ 53 State Street

EXISTING PLAQUES



04.23.21





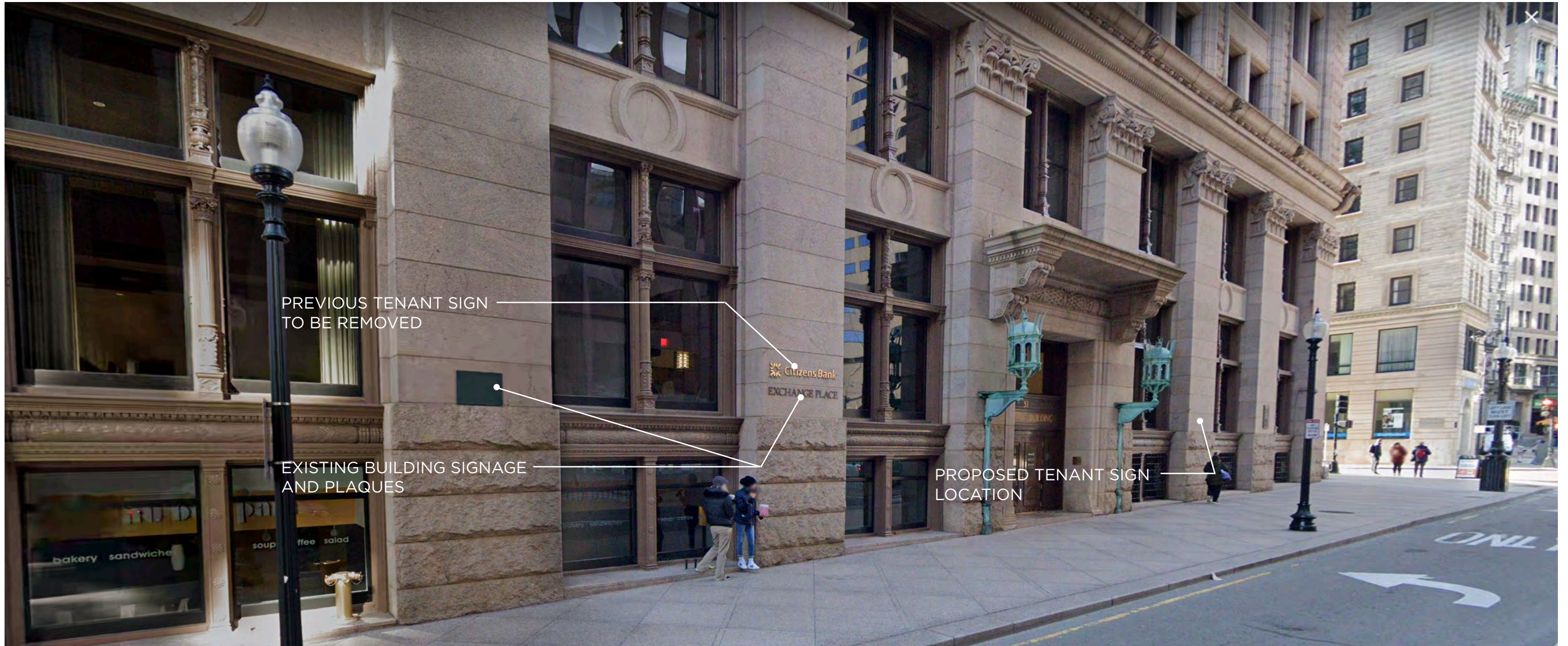
Amalgamated Bank : Boston Offices @ 53 State Street

STATE STREET ELEVATION WITH PROPOSED SIGNAGE



04.23.21

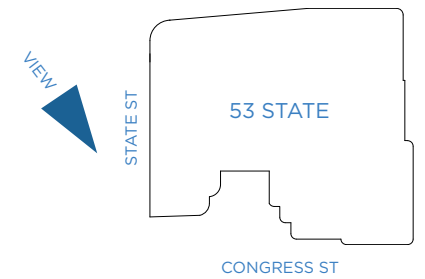




PREVIOUS TENANT SIGN  
TO BE REMOVED

EXISTING BUILDING SIGNAGE  
AND PLAQUES

PROPOSED TENANT SIGN  
LOCATION



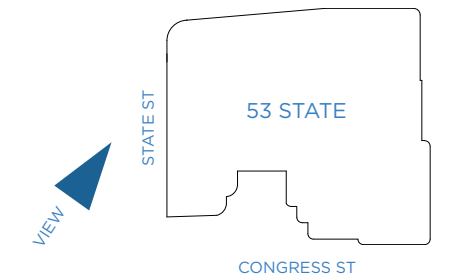
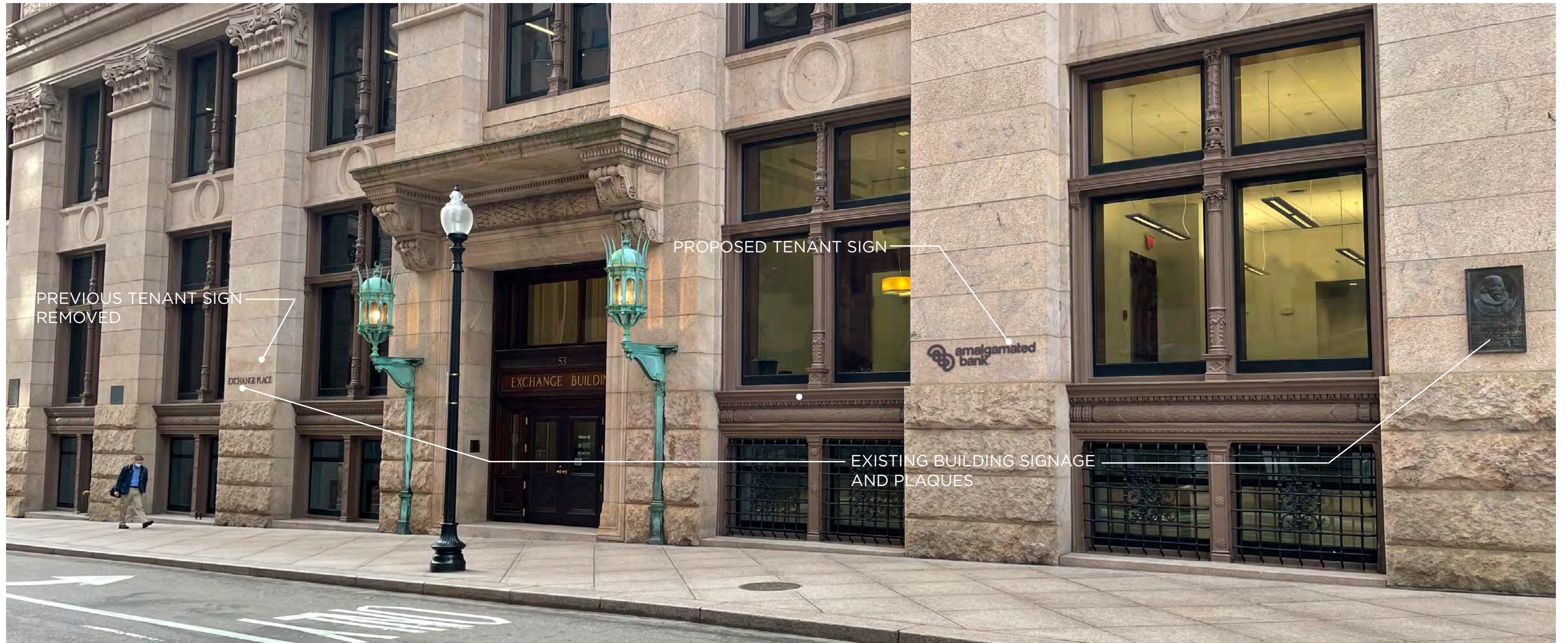
Amalgamated Bank : Boston Offices @ 53 State Street

ALTERNATE VIEW - STATE ST TOWARDS CONGRESS ST



04.23.21





Amalgamated Bank : Boston Offices @ 53 State Street

CLOSE UP VIEW



04.23.21





EXISTING STONE COLUMN

PROPOSED TENANT SIGNAGE:

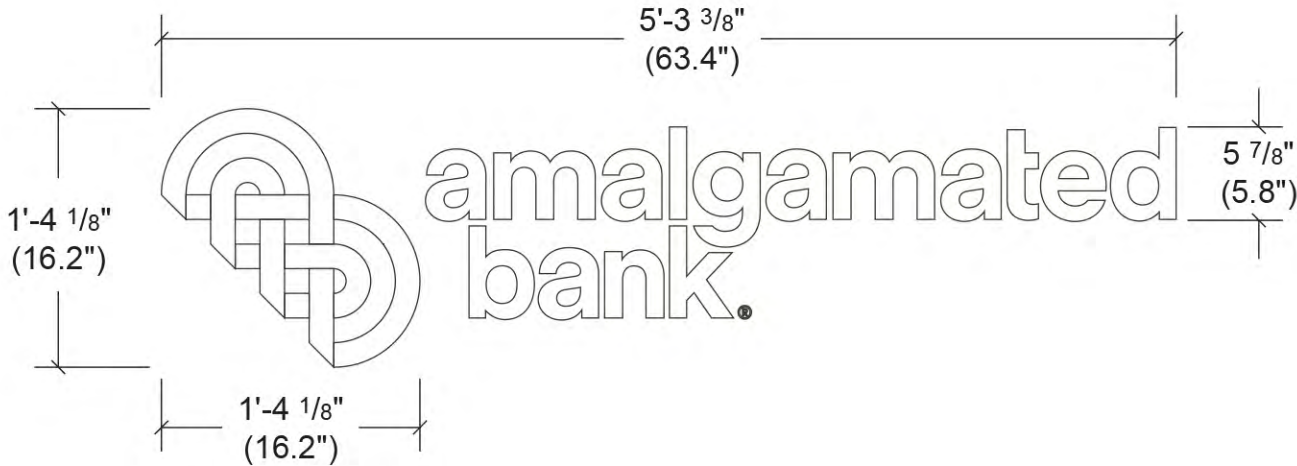
- OVERALL WIDTH OF SIGN TO MATCH NEARBY "EXCHANGE PLACE" SIGN
- FINISH TO MATCH EXISTING SIGNS AND PLAQUES ON THIS FACADE
- REFER TO SHOP DRAWING ON NEXT PAGE FOR MORE INFORMATION



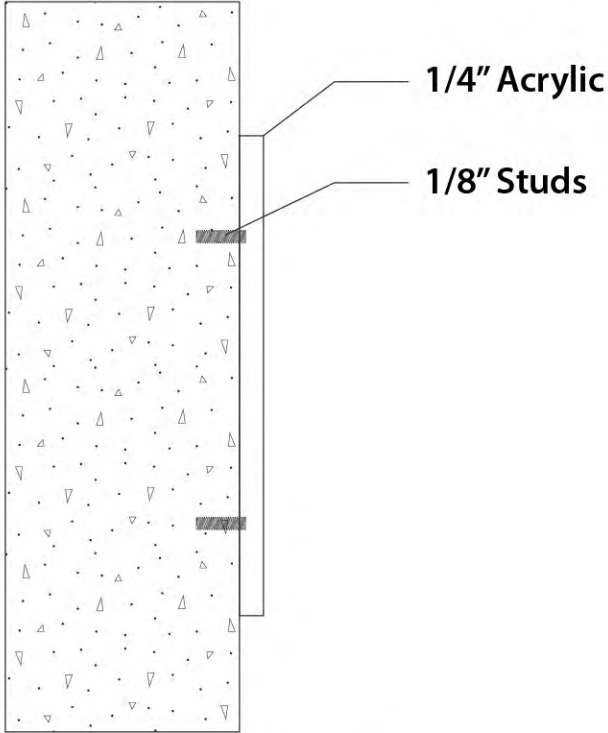
# Project: 0321\_24 Boston Urban Places - 53 State Amalgamated Bank

**PROJECT DETAILS:**

- 1/4" Thick Acrylic
- Face & Edge Painted
- Matthews Anchor Bronze Metallic
- Pin Mounted to Facade



**A.1 FRONT VIEW DETAIL**  
Scale: 1" = 1' 0"



**A.2 SIDE VIEW DETAIL**  
Scale: 1:2



**A.3 PERSPECTIVE VIEW**  
Scale: 1" = 1' 0"