

53

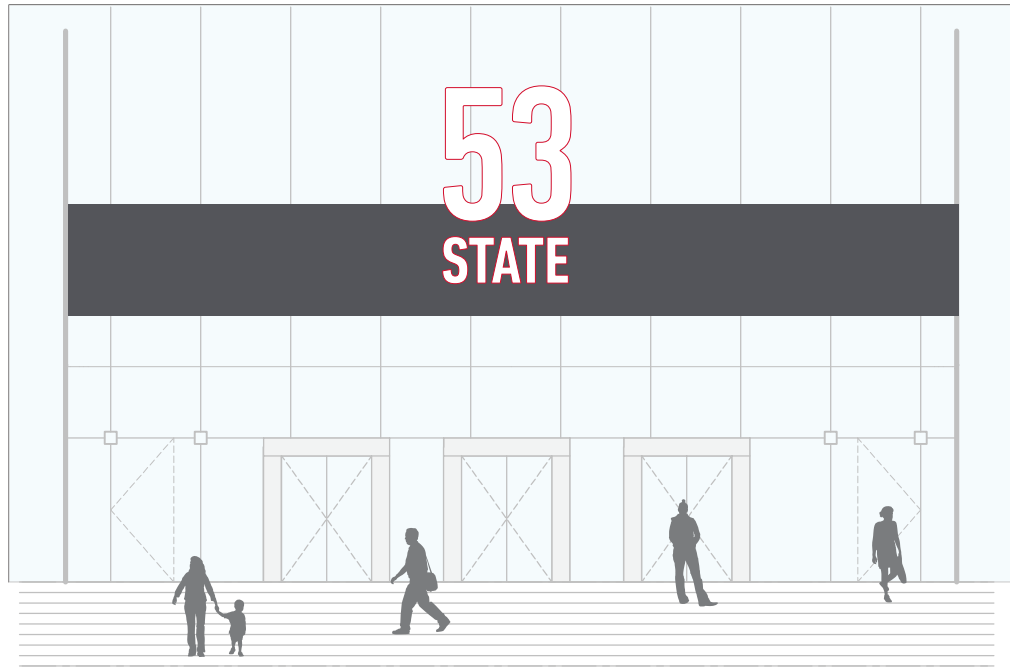
STATE

EXTERIOR Graphics Package
April 2021

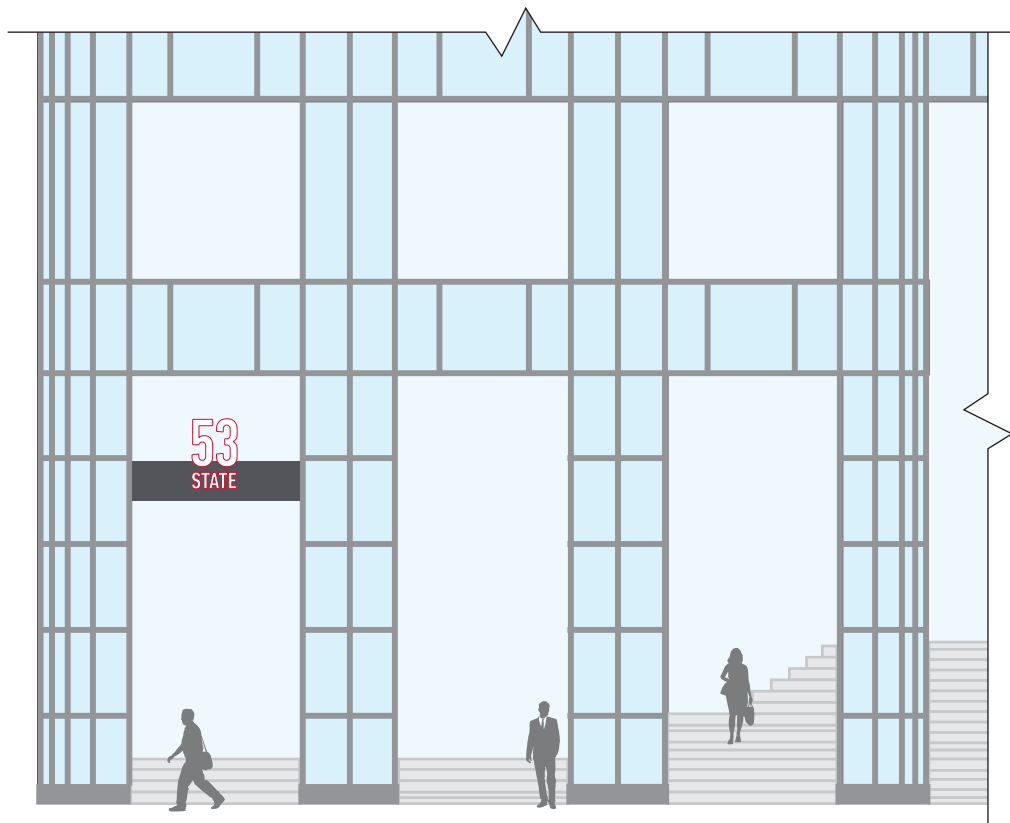
DESIGN

111 Fifth Avenue, 12th Fl
New York, NY 10003
T 212 989 3993

SIGN FAMILY



Exterior signage spans horizontally above entrances to the building



53 STATE

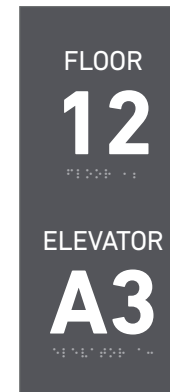
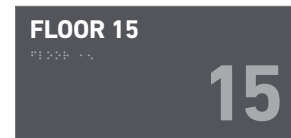
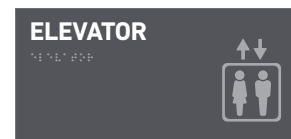
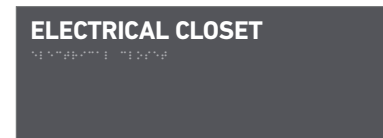
09

TENANT 1 SPACE FOR A TWO-LINE LONGER NAME	SUITE 905 ▶
TENANT 2 SHORT NAME	SUITE 912 ▶
TENANT 2 SHORT NAME	SUITE 923 ▶

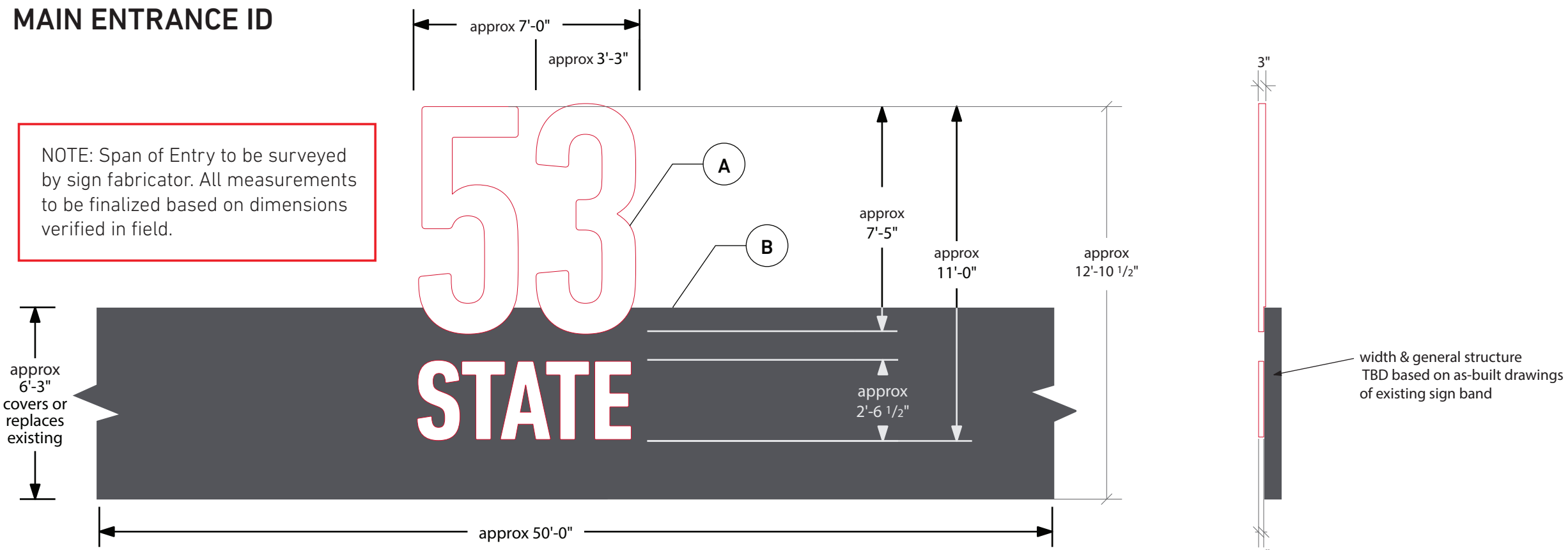
Interior signage uses the horizontal gray bar motif found in the exterior signage to bring band consistency inside

12

TENANT 1 SPACE FOR A TWO-LINE LONGER NAME	SUITE 1205 ▶
TENANT 2 SHORT NAME	SUITE 1212 ▶
TENANT 2 SHORT NAME	◀ SUITE 1223
Shift	THE GYM ▶
Shift	THE COMMONS ▶
Shift	◀ THE GARDEN



MAIN ENTRANCE ID



NOTE: Span of Entry to be surveyed by sign fabricator. All measurements to be finalized based on dimensions verified in field.

NOT FOR CONSTRUCTION
 DRAWING FOR DESIGN INTENT ONLY. FABRICATOR TO VERIFY ALL FIELD MEASUREMENTS. SHOP DRAWINGS AND ARTWORK TO BE PRODUCED BY FABRICATOR.

ALL SHOP DRAWINGS TO BE APPROVED BY ESI DESIGN PRIOR TO PRODUCTION.

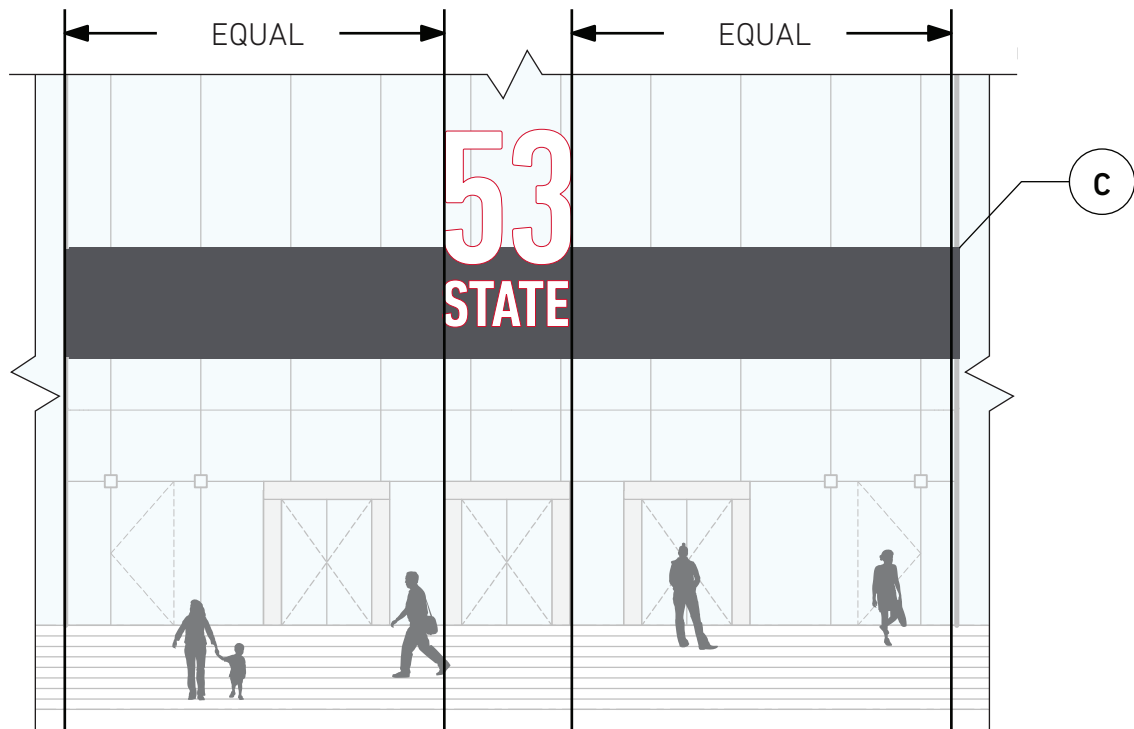
ID.1
1 MAIN ID at CONGRESS STREET ENTRANCE - DETAIL ELEVATION

Scale: 1/4" = 1'-0"

ID.1
2 SECTION

Scale: 1/4" = 1'-0"

width & general structure TBD based on as-built drawings of existing sign band



ID.1
3 MAIN ID at CONGRESS STREET ENTRANCE - ELEVATION

Scale: 3/32" = 1'-0"



ID.1
4 REFERENCE RENDERING

Scale: NTS

NOTES

A
 DETAIL
 2" - 3" thick dimensional channel letters with front illumination. Front acrylic face P4, aluminum edges and back painted P1. "53" extends nearly 7'-0" above signage band – structure needs to be sufficiently sturdy and safe. Sign width TBC, intent to match the width of the center revolver. Requires engineering.

B
 DETAIL
 Reclad transom band and paint P2. Bottom edge only painted P1. Seams TBD. Fabricator to recommend depth. VIF transom width and height. Building address is mounted to transom with no visible front-facing attachments.

C
 ELEVATION
 Mount ID.1 as shown. Building address to be the same width as the center revolver, VIF dimensions to match.

MAIN ENTRANCE ID



PROPOSED BUILDING ID

Fabricator will remove existing mirrored envelope panels and internally illuminated letters. They'll replace the panels with a dark grey architectural system. They'll install new fabricated address ID with concealed tie-backs on top of the new panels. Finishes will be anodized or multi-coat polyurethane with protective clear coat.

EXISTING BUILDING ID

HISTORIC ENTRANCE IDS

NOTE: Existing signage/structures and dimensions of entrances to be surveyed by sign fabricator. All measurements noted here to be finalized based on dimensions verified in field.

NOT FOR CONSTRUCTION
DRAWING FOR DESIGN INTENT ONLY. FABRICATOR TO VERIFY ALL FIELD MEASUREMENTS. SHOP DRAWINGS AND ARTWORK TO BE PRODUCED BY FABRICATOR.

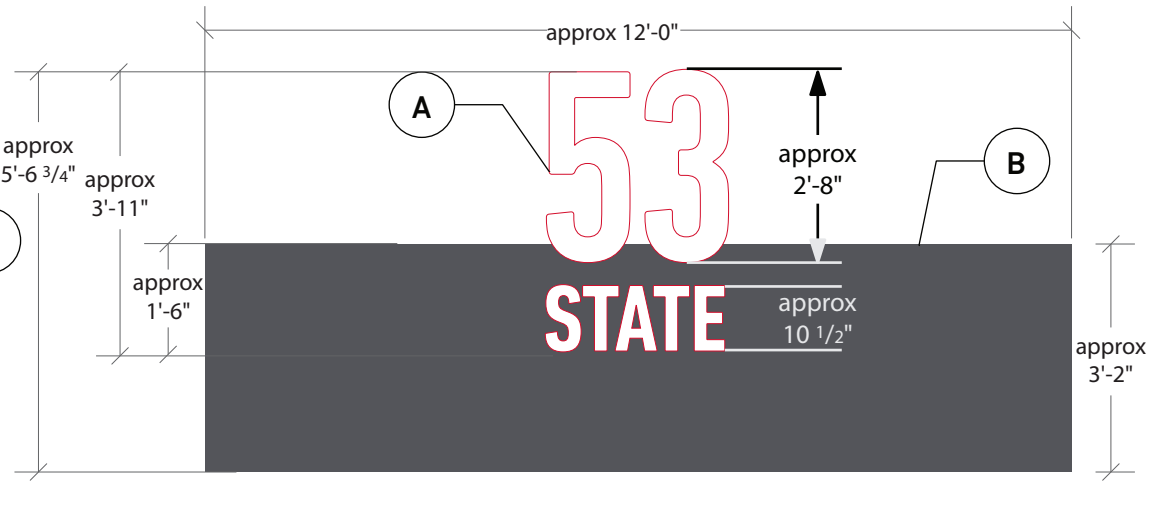
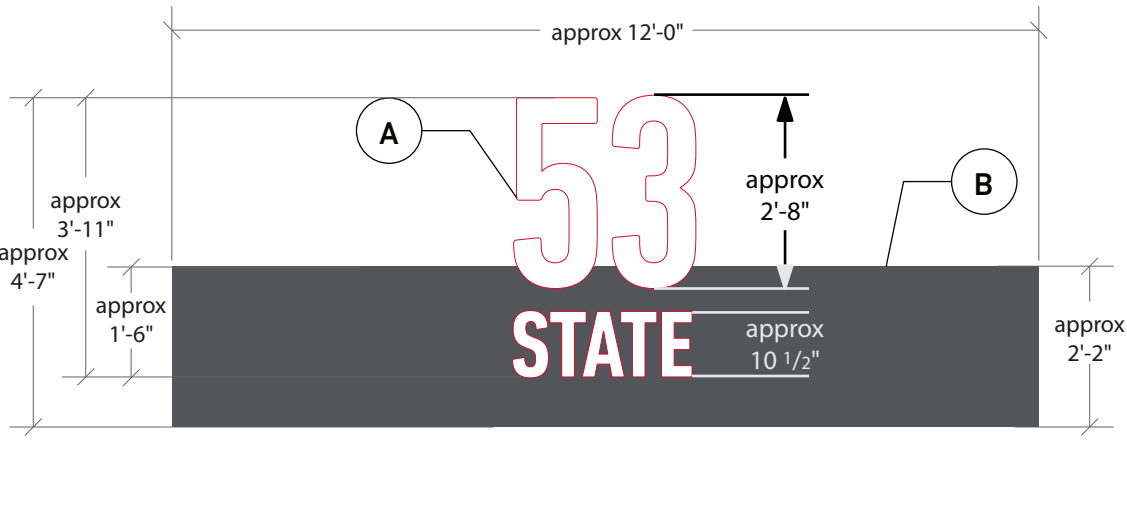
ALL SHOP DRAWINGS TO BE APPROVED BY ESI DESIGN PRIOR TO PRODUCTION.

NOTES

A
DETAIL
1" - 3" thick dimensional aluminum letters. Front face painted P4, edges painted P1, back painted P2. Dimensions TBC based on VIF dimensions.

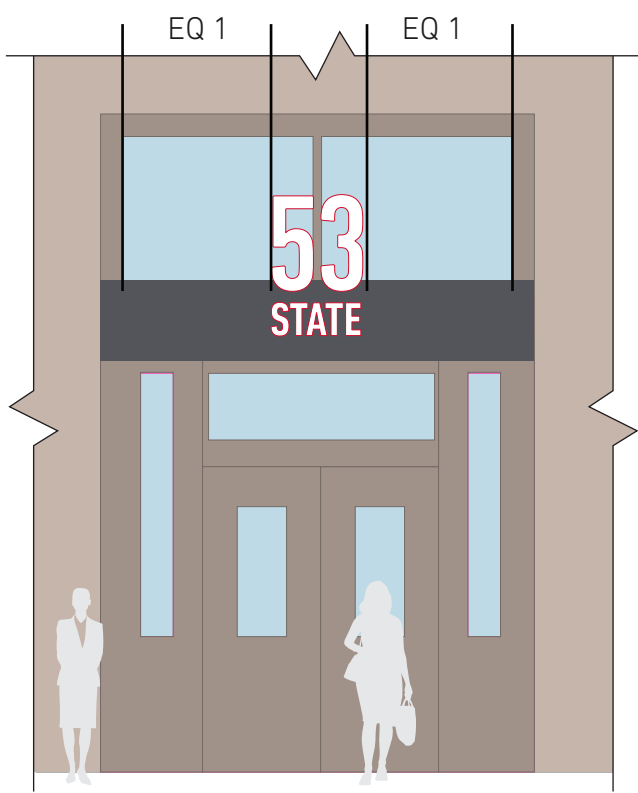
B
DETAIL
4" thick dimensional aluminum pan painted P2. Bottom edge painted P1. Seams TBD. Width VIF to span opening, height VIF to adequately cover existing signage. All other dimensions TBC based on VIF width and height.

C
SECTION
Mount spanning doorway, attached to stone on either side. Signage band has caps on top and bottom to neatly conceal and protect the wooden structure beneath. Fabricator to determine method to hide wooden sign and keep it free of excessive moisture and dirt with clean edges.

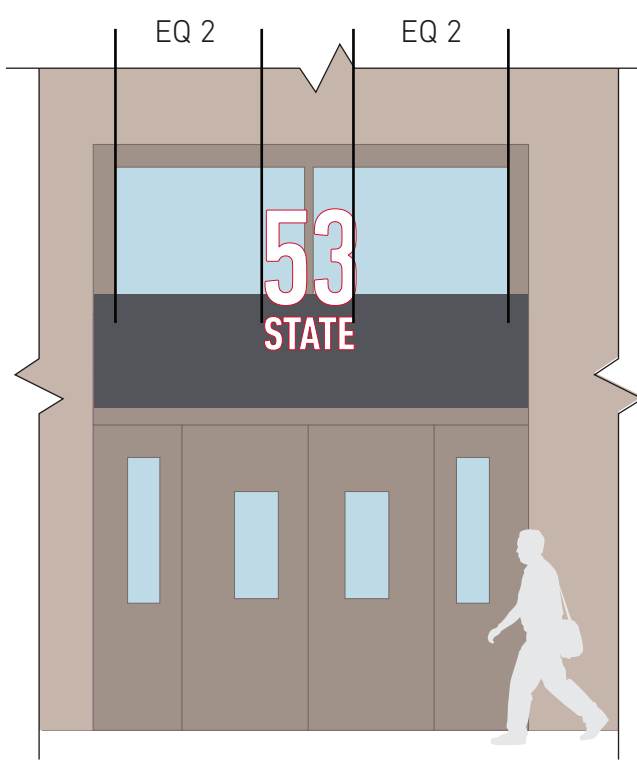


ID.2A
1
ID at KILBY STREET HISTORIC ENTRANCE - DETAIL ELEVATION & SECTION
Scale: 3/8" = 1'-0"

ID.2B
2
ID at STATE STREET HISTORIC ENTRANCE - DETAIL ELEVATION & SECTION
Scale: 3/8" = 1'-0"



ID.2A
3
KILBY STREET HISTORIC ENTRANCE - ELEVATION
Scale: 3/16" = 1'-0"



ID.2B
4
STATE STREET HISTORIC ENTRANCE - ELEVATION
Scale: 3/16" = 1'-0"



ID.2
5
REFERENCE PHOTOMOCKUP OF KILBY STREET ENTRANCE
Scale: NTS

ENTRANCE ID ON STATE STREET



PROPOSED BUILDING ID

Existing millwork to be concealed with as little impact to wood as possible by use of aluminum spanning between masonry. New panel system to rest on spanned aluminum and support fabricated Address ID. Finishes to match Main Entrance.



EXISTING BUILDING ID

ENTRANCE ID ON KILBY STREET



PROPOSED BUILDING ID

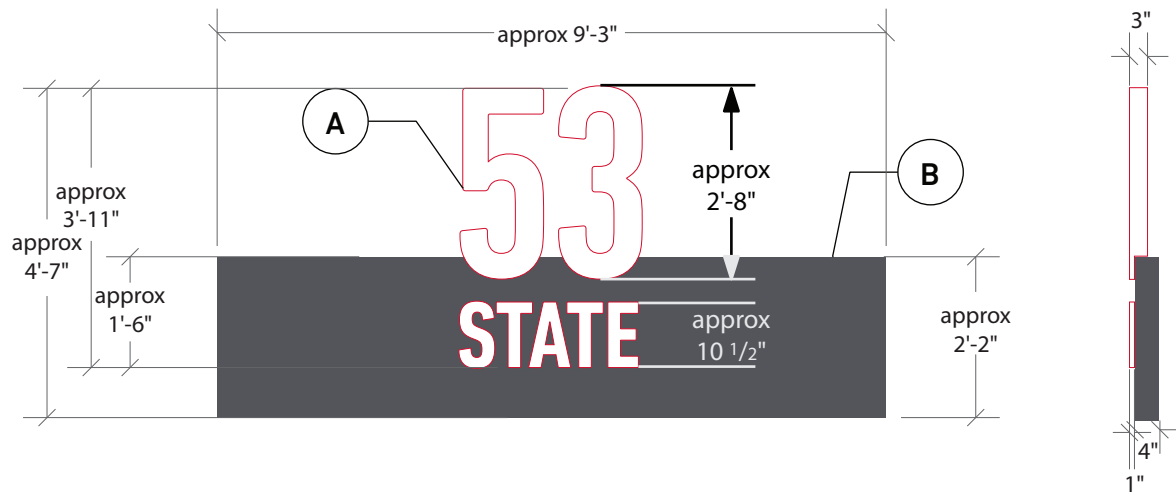
Existing millwork to be concealed with as little impact to wood as possible by use of aluminum spanning between masonry. New panel system to rest on spanned aluminum and support fabricated Address ID. Finishes to match Main Entrance.



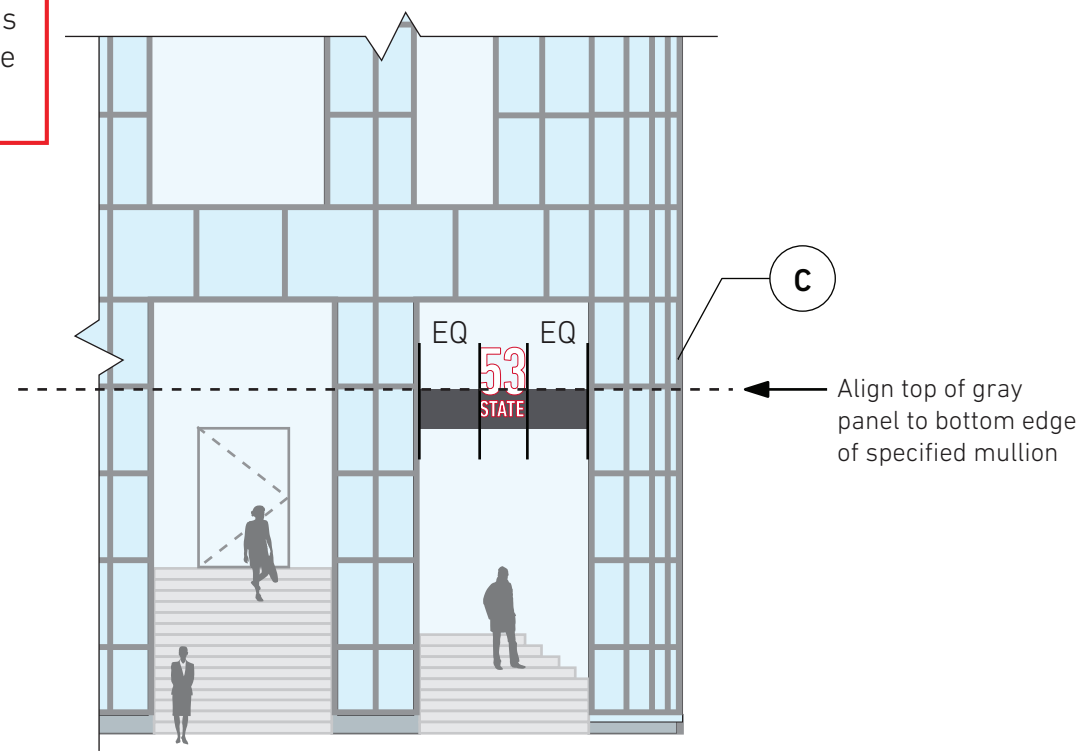
EXISTING BUILDING ID

CORNER ENTRANCE ID

NOTE: Existing signage/structures and dimensions of entrances to be surveyed by sign fabricator. All measurements noted here to be finalized based on dimensions verified in field.



ID.2C+D
1 ID at CORNER of KILBY & EXCHANGE - DETAIL ELEVATION & SECTION
Scale: 3/8" = 1'-0"



ID.2C
3 ID on EXCHANGE PLACE SIDE - ELEVATION
Scale: 3/32" = 1'-0"

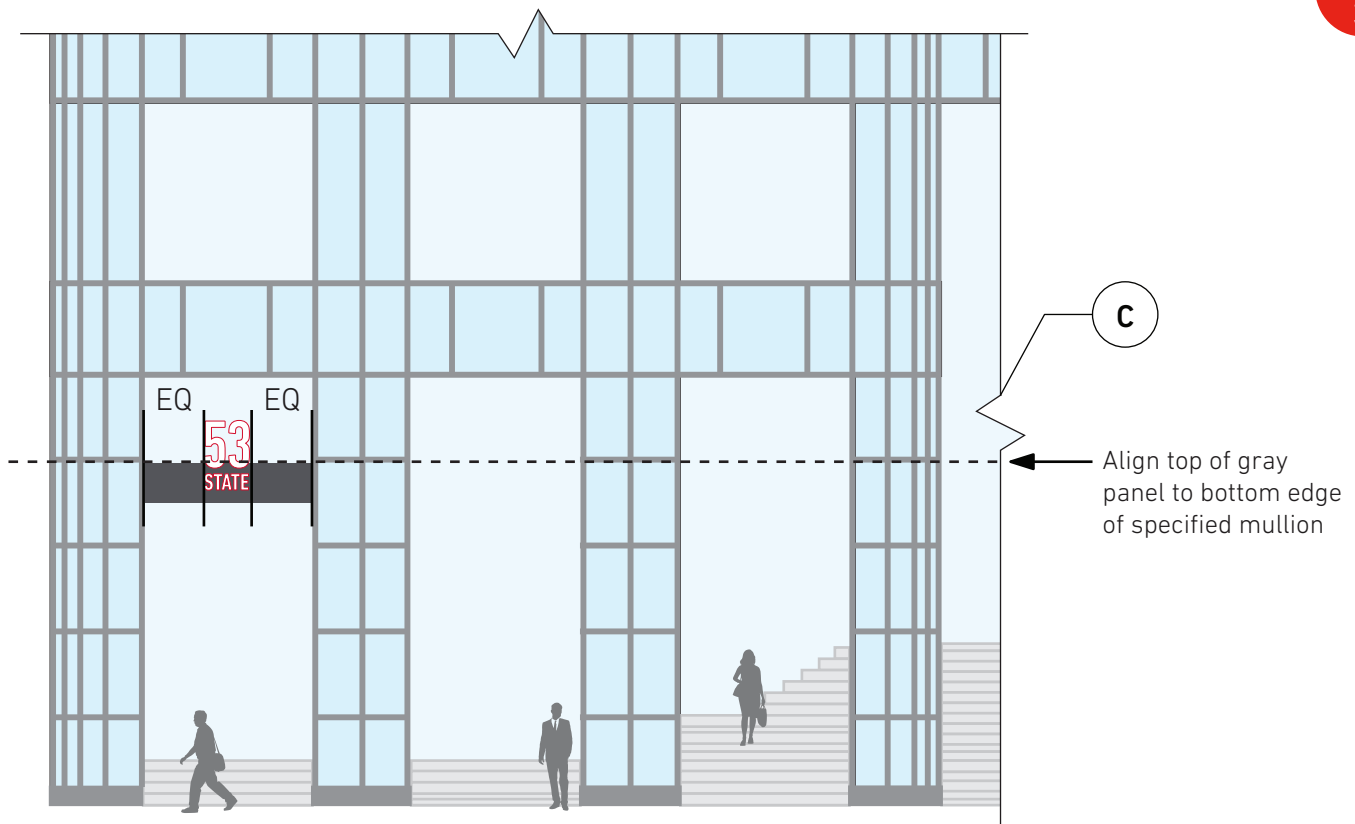
NOT FOR CONSTRUCTION
DRAWING FOR DESIGN INTENT ONLY. FABRICATOR TO VERIFY ALL FIELD MEASUREMENTS. SHOP DRAWINGS AND ARTWORK TO BE PRODUCED BY FABRICATOR.

ALL SHOP DRAWINGS TO BE APPROVED BY ESI DESIGN PRIOR TO PRODUCTION.

NOTES
A
DETAIL
1" - 3" thick dimensional aluminum letters. Front face painted P4, edges painted P1, back painted P2. Dimensions TBC based on VIF dimensions.

B
DETAIL
4" thick dimensional aluminum pan painted P2. Bottom edge painted P1. Seams TBD. Width VIF to span opening, all other dimensions TBC based on width and adjusted accordingly.

C
ELEVATION
Mount as shown, gray bar front flush with mullions. Address numbers to be centered within opening.



ID.2D
2 ID on KILBY STREET SIDE - ELEVATION
Scale: 3/32" = 1'-0"



ID.2C+D
4 REFERENCE PHOTOMOCKUP
Scale: NTS

CORNER ENTRANCE ID AT KILBY & EXCHANGE

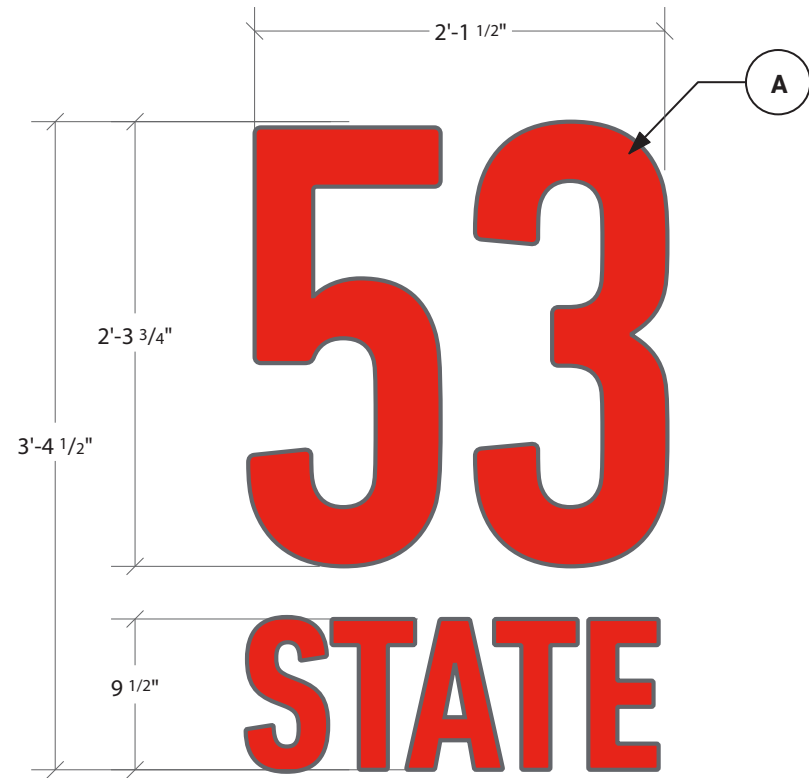


PROPOSED BUILDING ID

New aluminum trusses to tie back to building steel, through existing curtain wall, to support new panel system fabricated Address ID.
 Finishes to match Main Entrance.

EXISTING BUILDING ID

CORNER ENTRANCE SECONDARY ID



BCP.1 see GR-804



NOT FOR CONSTRUCTION
DRAWING FOR DESIGN INTENT ONLY.
FABRICATOR TO VERIFY ALL FIELD
MEASUREMENTS. SHOP DRAWINGS
AND ARTWORK TO BE PRODUCED
BY FABRICATOR.

ALL SHOP DRAWINGS TO BE APPROVED
BY ESI DESIGN PRIOR TO PRODUCTION.

NOTES

- A**
1" thick dimensional aluminum letters.
Front face painted P1, edges painted P2.
Mounted to stone wall with hidden
hardware. Centered horizontally on
column 14" above top edge of BCP.1
(see GR-804)

ID.3
1

SECONDARY ID at CORNER of KILBY & EXCHANGE - DETAIL ELEVATION & SECTION

Scale: 1" = 1'-0

ID.3
2

REFERENCE PHOTO MOCKUP

Scale: NTS

CORNER ENTRANCE ID WITHIN ENCLOSURE AT KILBY & EXCHANGE

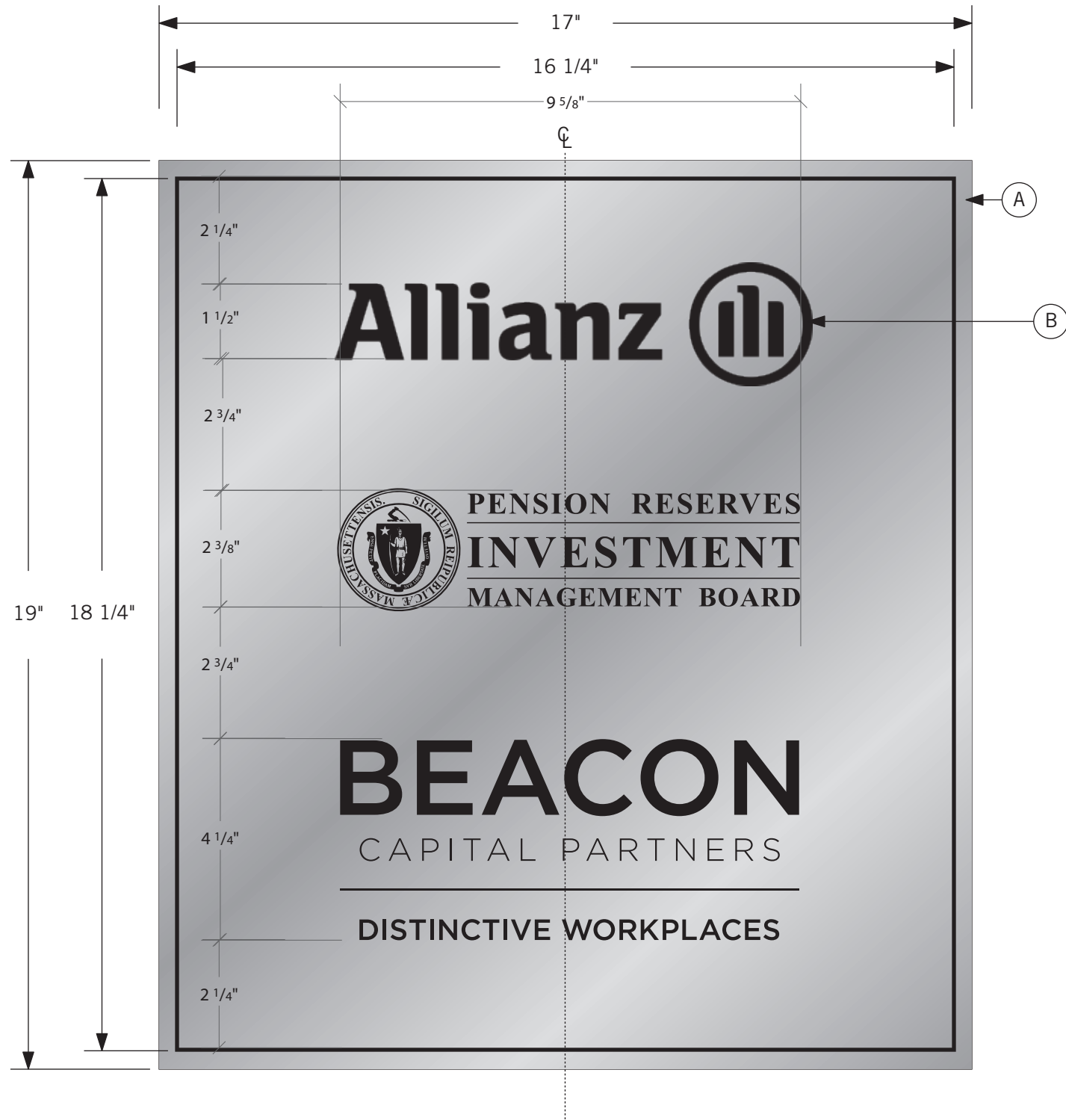


PROPOSED BUILDING ID

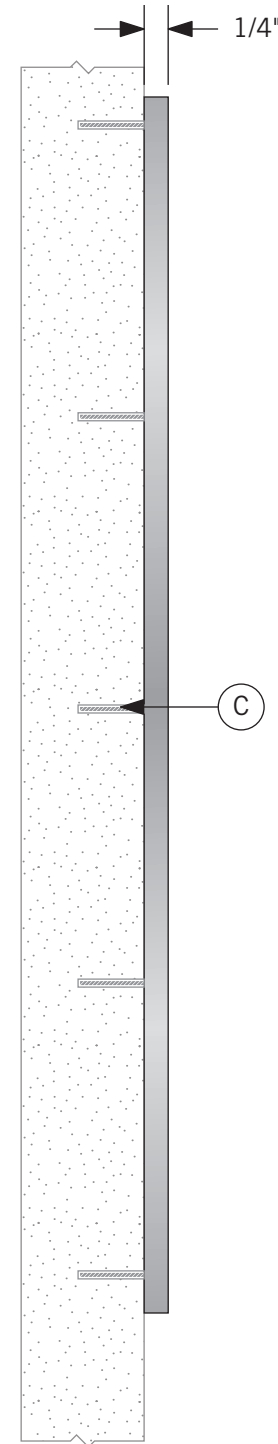
Fabricated aluminum letters mounted to existing stonework with studs. Finish to be multi-coat polyurethane with protective clear coat.



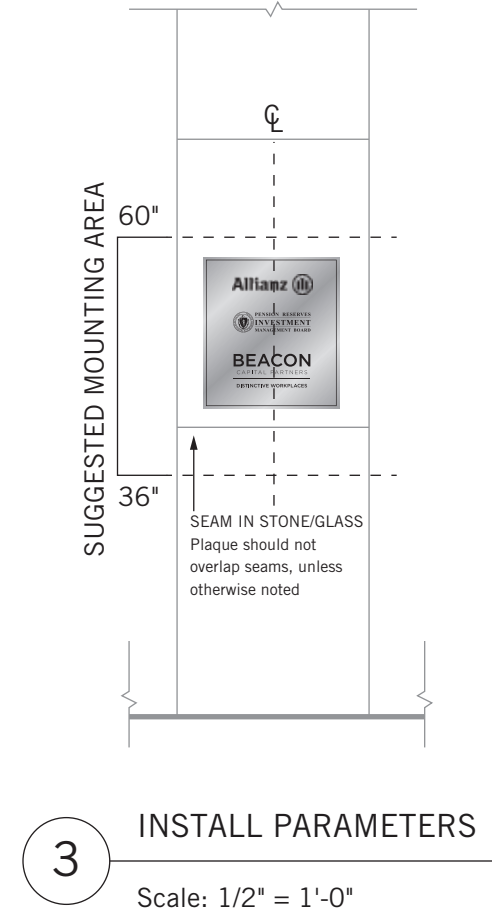
EXISTING BUILDING ID



1 DETAIL ELEVATION
Scale: 1:3



2 DETAIL SECTION
Scale: 1:3



3 INSTALL PARAMETERS
Scale: 1/2" = 1'-0"

NOT FOR CONSTRUCTION
DRAWING FOR DESIGN INTENT ONLY. FABRICATOR TO VERIFY ALL FIELD MEASUREMENTS. SHOP DRAWINGS AND ART TO BE PRODUCED BY FABRICATOR.

ALL SHOP DRAWINGS TO BE APPROVED BY ESI DESIGN PRIOR TO PRODUCTION

NOTES

- (A)** 1/4" thick stainless steel with horizontal #4 brush finish
 - (B)** Exterior grade direct print in black. Fabricator to recommend durable printing method, e.g. weather and tamper resistant. Vector artwork to be provided by owner/building management.
 - (C)** Stone surface: Stud mounted flush to wall surface (shown)
- Fabricator to suggest alternate mounting for glass surface, e.g. Full sheet VHB tape

PARKING GARAGE ID



ID.5
1

PARKING GARAGE ENTRANCE ID - elevation

Scale: 1" = 1'-0



ID.5
2

REFERENCE PHOTO existing sign to be replaced

Scale: NTS

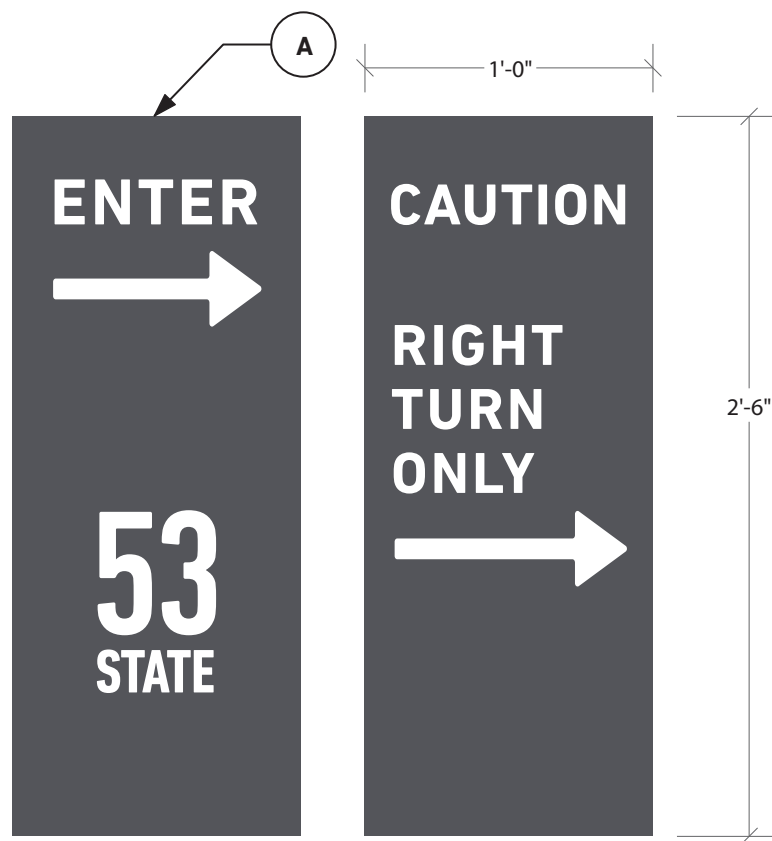
NOT FOR CONSTRUCTION
DRAWING FOR DESIGN INTENT ONLY. FABRICATOR TO VERIFY ALL FIELD MEASUREMENTS. SHOP DRAWINGS AND ARTWORK TO BE PRODUCED BY FABRICATOR.

ALL SHOP DRAWINGS TO BE APPROVED BY ESI DESIGN PRIOR TO PRODUCTION.

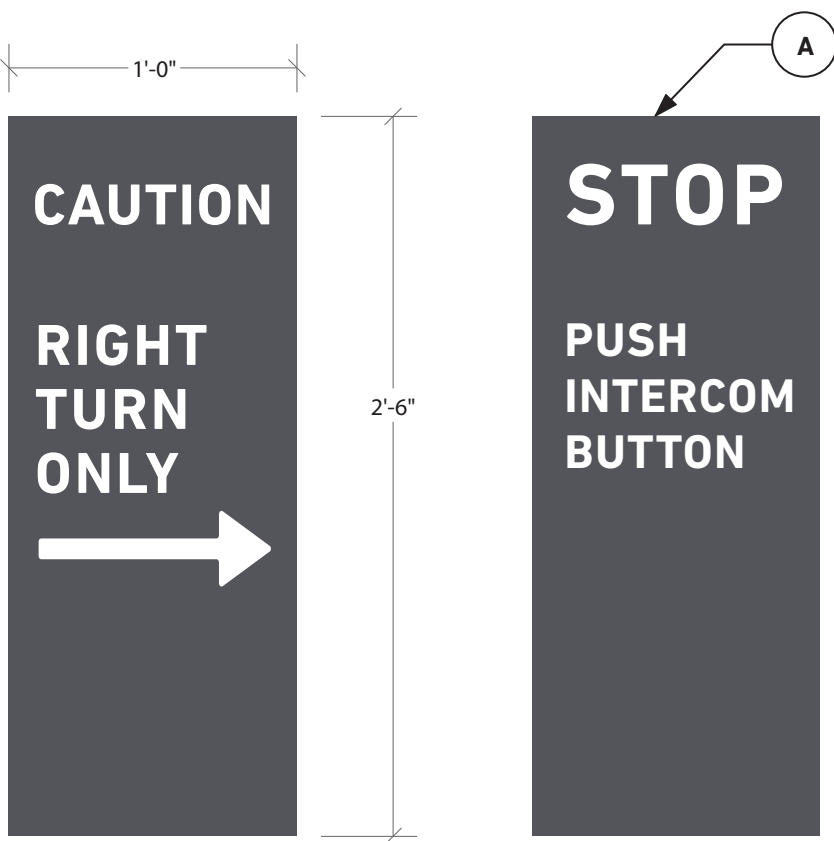
NOTES

- A** 3/8" thick white acrylic sign pan painted P2 with text, rule, and logo masked out to reveal white acrylic subsurface. Illuminated internally with even light coverage, using existing power source. Mounted to existing framework with hidden hardware.

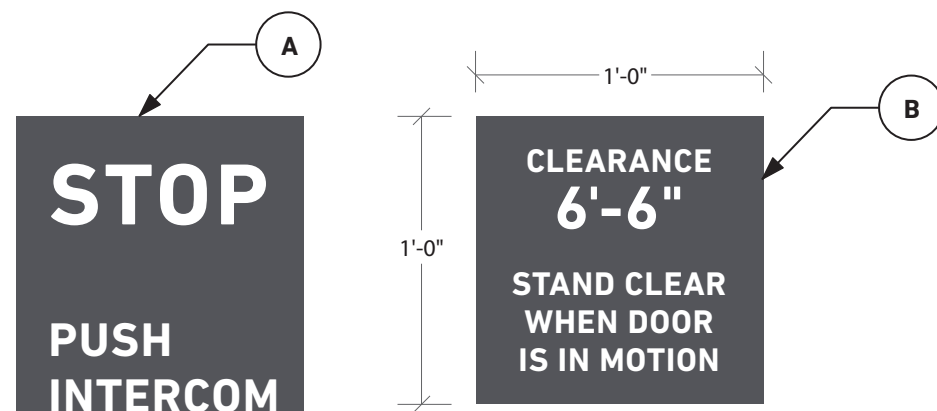
EXTERIOR GARAGE ENTRANCE AND REGULATORY SIGNAGE



GAR.1 GARAGE EXTERIOR ENTRY/EXIT
1 Scale: 1 1/2" = 1'-0"



GAR.2 GARAGE EXTERIOR INTERCOM
2 Scale: 1 1/2" = 1'-0"



GAR.3 GARAGE EXTERIOR DOOR SIGN
3 Scale: 1 1/2" = 1'-0"



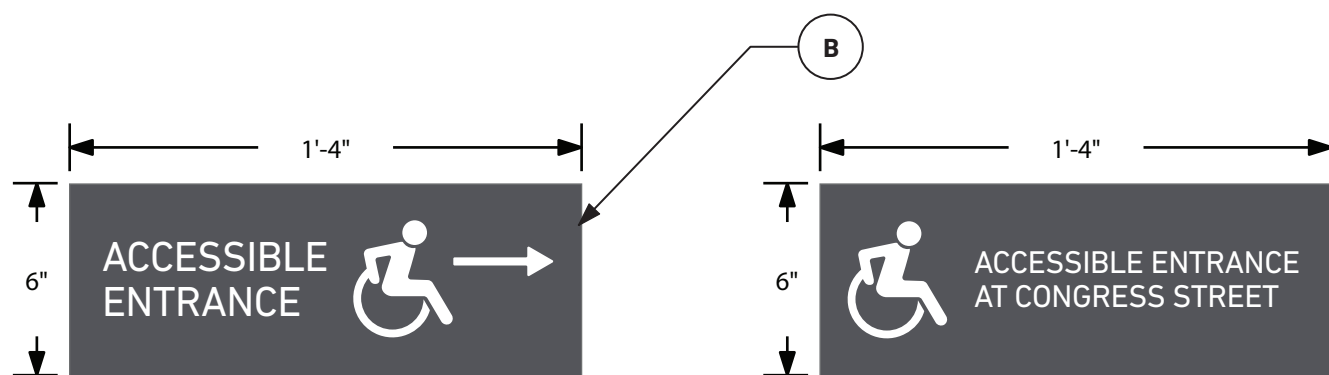
GAR.4 REFERENCE PHOTO existing signs to be replaced
4 Scale: NTS

NOT FOR CONSTRUCTION
DRAWING FOR DESIGN INTENT ONLY.
FABRICATOR TO VERIFY ALL FIELD
MEASUREMENTS. SHOP DRAWINGS
AND ARTWORK TO BE PRODUCED
BY FABRICATOR.

ALL SHOP DRAWINGS TO BE APPROVED
BY ESI DESIGN PRIOR TO PRODUCTION.

NOTES

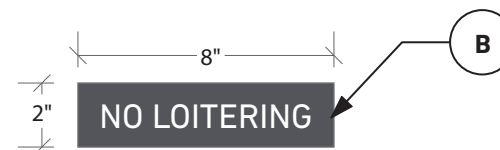
- A** Internally illuminated durable panels suitable for exterior, vehicular traffic location. Final production TBD in coordination with fabricator. Panels to replace existing panels shown at left.
- B** 1/8" thick aluminum panel painted P2 with letters painted P4.
- C** 1/4" thick aluminum painted P2 with etched and filled letters and icons in P4.
- D** Cut vinyl. Final color TBD based on site lighting conditions.



REG.1 ACCESSIBLE ENTRANCE
5 Scale: 2" = 1'-0"



REG.5 ACCESSIBLE ENTRANCE AT CONGRESS
6 Scale: 2" = 1'-0"

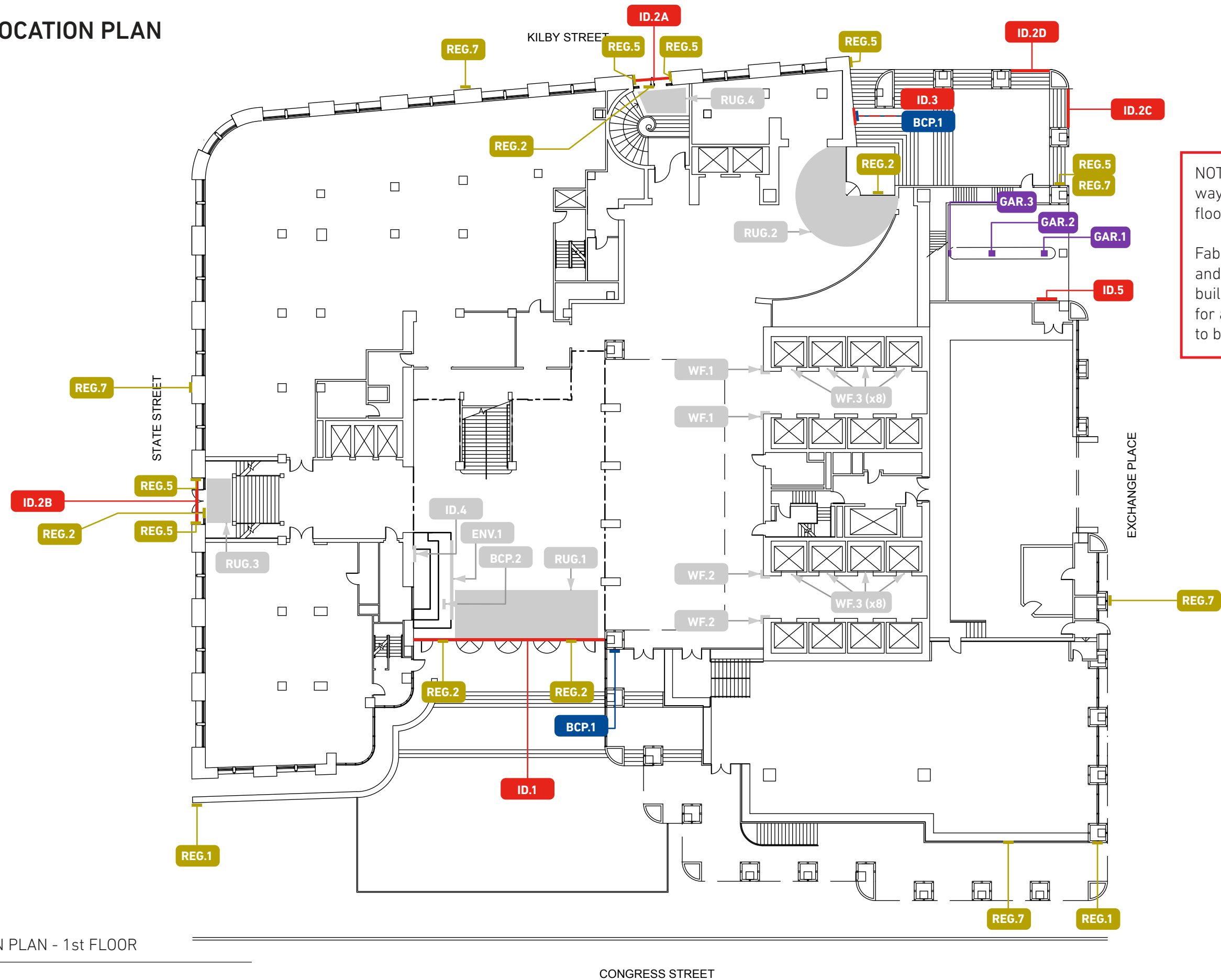


REG.6 NO LOITERING
7 Scale: 2" = 1'-0"



REG.2 REGULATORY EXTERIOR VINYL - DETAIL
8 Scale: 2" = 1'-0"

EXTERIOR LOCATION PLAN



ALL SHOP DRAWINGS TO BE APPROVED BY ESI DESIGN PRIOR TO PRODUCTION.

NOTE: This location plan shows major wayfinding and branding signage on ground floor.

Fabricator to conduct sign survey of building and confirm locations and content of base building, regulatory/ADA, and egress signage for approval. Any additional signs needed to be approved by client.

1

LOCATION PLAN - 1st FLOOR

Scale: NTS

EXTERIOR

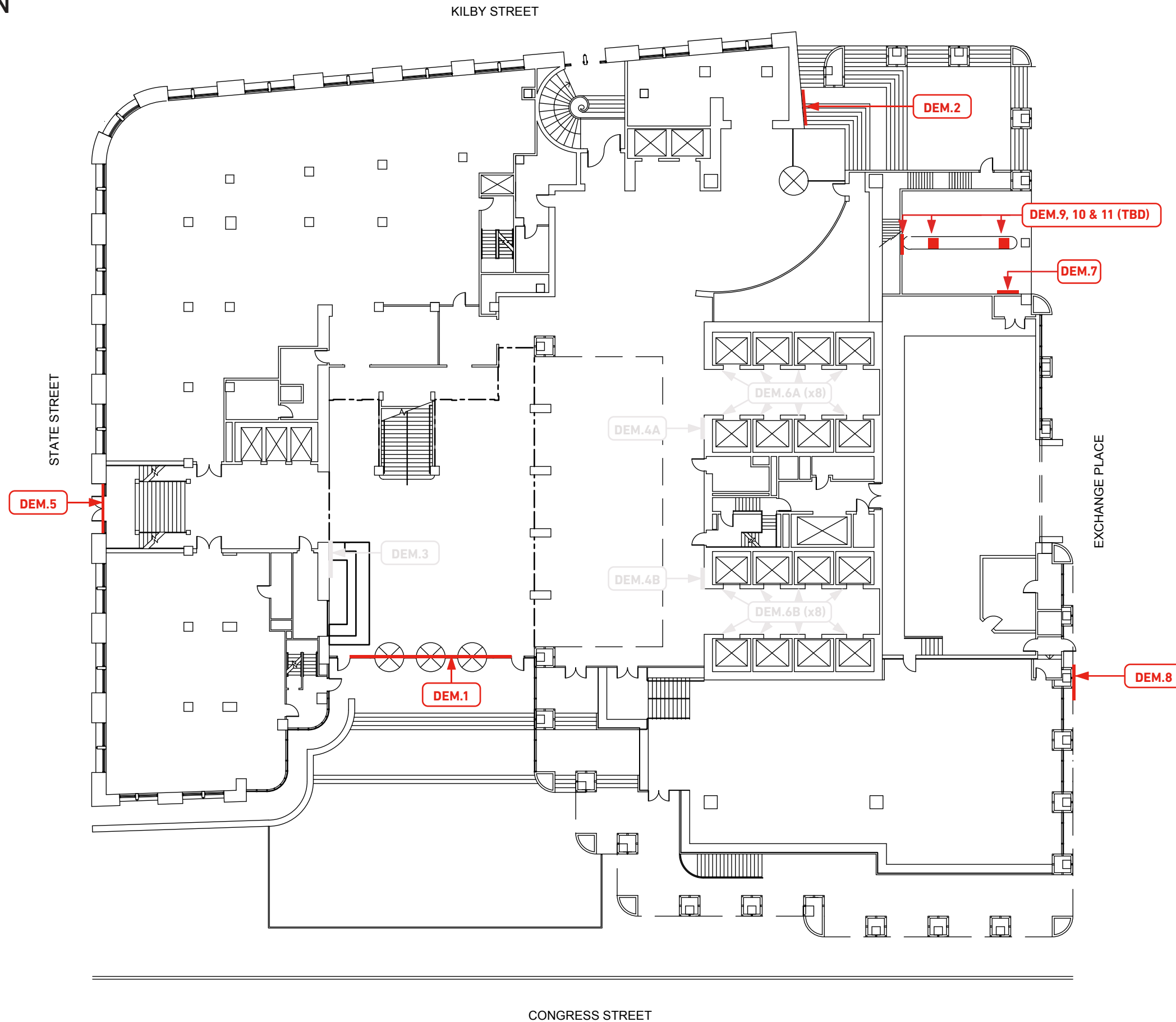
LABEL	SIGN TYPE	QTY	MESSAGE	W	H	D	MATERIALS	COLOR/S / FINISH	MOUNTING	INSTALL/SITE NOTES	MOCKUP/SAMPLE?	MOCKUP/SAMPLE DESCRIPTION
ID.1	Main Entry ID	1	Building Address	11'-0" TBC based on signage band	7'-0" TBC based on signage band	3" TBC based on signage band	Reclad transom with signage band and dimensional channel letters with front illumination.	P1, P2, P4.	Mounted to existing transom or replace entirely and mount using existing skeletal structure	Alternative price for replacing existing structure with new signage band. Engineering needed to assure sign is both structurally sound and safe. "53" extends nearly 7'-0" above signage band, will need reinforcement.	Yes	Sample paint colors and mockup of illumination method
ID.2A	Historic Entrance ID (Kilby Street)	1	Building ID	12'-0 1/2" TBC based on signage band	4'-7" TBC based on signage band	3" TBC based on signage band	Dimensional aluminum lettering on signage band. Not illuminated.	P1, P2, P4.	Mount to stone on either side of opening.	Mount spanning doorway, attached to stone on either side. Signage band capped on top and bottom to neatly conceal and protect the wooden structure beneath. Fabricator to determine method to hide existing wooden sign and keep it free of excessive moisture and dirt.		
ID.2B	Historic Entrance ID (State Street)	1	Building ID	12'-0 1/2" TBC based on signage band	4'-11" TBC based on signage band	3" TBC based on signage band	Dimensional aluminum lettering on signage band. Not illuminated.	P1, P2, P4.	Mount to stone on either side of opening.	See note for ID.2A above		
ID.2C+D	Corner Entrance IDs (Kilby St & Exchange Pl - one on either side of corner entrance)	set of 2	Building ID	9'3 1/2" TBC based on signage band	4'-7" TBC based on signage band	3" TBC based on signage band	Dimensional aluminum lettering on signage band. Not illuminated.	P1, P2, P4.	Mount to either side of opening, front of gray bar flush with mullions as shown.			
ID.3	Corner entrance secondary ID	1	Building ID	2'-1 1/2"	3'-4 1/2"	1"	Dimensional aluminum letters	P1, P2	Mounted to stone wall surface with hidden hardware	Remove existing building ID, patch and repair stone		
BCP.1	Beacon Plaque	2	Beacon Logo	17"	10"	1/4"	stainless steel panel with brush finish with direct print graphics in black and polished edges	Horizontal #4 brush finish on back panel, polished finish on lettering, etched and paint two colors, see GR-803.	Stone surface: Stud mounted flush to wall surface (see drawing) Alternative mounting: durable, exterior grade method, such as full sheet VHB tape (?)	One location is on a column permanently clad in glass. Fabricator to use durable, exterior grade direct printing method or recommend alternative.		
ID.5	Garage Parking ID	1	Private Parking + Building ID	approx 4'-0"	approx. 3'-0"	3/8"	white acrylic sign pan painted P2 with text, rule, and logo masked out to reveal white acrylic subsurface. Illuminated internally with even light coverage, using existing power source.	P2, P4	mounted to existing metal framework with hidden hardware, method TBD	remove existing parking ID structure and replace. Patch and repair as needed.		
GAR.1	2-sided directional sign	1	Enter (front) + Caution Right Turn Only (back)	1'-0" to be confirmed	2'-6" to be confirmed		Internally illuminated durable panels suitable for exterior, vehicular traffic location. Final production TBD in coordination with fabricator. Panels to replace existing.	P2, P4				
GAR.2	Garage entrance instructions	1	Stop. Push intercom button	1'-0" to be confirmed	2'-6" to be confirmed		See note above	P2, P4				
GAR.3	Garage clearance information	1	Clearance 6'-6" Stand clear when door is in motion	1'-0" to be confirmed	1'-0" to be confirmed		1/8" thick aluminum panel painted P2 with letters painted P4	P2, P4				

DESIGN

2/24/2021

REG.1	Wheelchair access	2	Accessible Entrance Ramp	1'-4"	6"		1/4" thick aluminum panel in P2 with etched and filled text/icon in P4	P2, P4	Mount to wall near ramp.			
REG.2	Exterior regulatory	5	No Smoking / Delivery location	1'-3 1/4"	10"		Second surface applied vinyl on glass	P4	Mount second surface to interior of glass as shown.			
REG.5	Wheelchair access Congress Street	6	Accessible entrance located on Congress Street	1'-4"	6"		1/4" thick aluminum panel in P2 with etched and filled text/icon in P4	P2, P4				
REG.6	No Loitering	5 quantity to be confirmed	No Loitering	8"	2"		1/4" thick aluminum panel in P2 with etched and filled text/icon in P4	P2, P4				

EXTERIOR DEMO PLAN



ALL SHOP DRAWINGS TO BE APPROVED BY ESI DESIGN PRIOR TO PRODUCTION.

NOTE: This location plan only shows major signage to be removed on ground floor.

Fabricator to conduct sign survey and determine where signage (such as "Accessible Entrance" and "No Loitering") needs to be replaced by new signage. All removal of signage to be coordinated with building management. All surfaces to be patched and refinished prior to installation of new signs.

Loading Dock signage needs to be evaluated with management. Not yet included in scope.

