



Improvements to
McGann Playground
Hyde Park
Community Meeting #1

B

G2

July 15, 2021
Boston Parks and Recreation



MEETING RECORDING



The Boston Parks and Recreation Department will be recording the meeting and posting to our project webpage for those who are unable to attend the Zoom meeting live.

It is possible that participants may also be recording the meeting with their phones cameras or other devices. If you do not wish to be recorded during this meeting, please keep your microphone and camera off.

VIRTUAL MEETING ETIQUETTE

We want to ensure this conversation is a pleasant experience for all and that all community members/ stakeholders are comfortable sharing their comments, questions and feedback.

Please be respectful and mindful of each other's time when asking questions/ providing comments, so that all attendees are able to participate in the meeting.

Keep questions/ comments project-specific and not personal to yield solution-driven discussion.

Please wait until all attendees have had the opportunity to ask a question/ provide a comment before providing additional questions/ comments.

You can always set up a conversation with Lauren Bryant, Lauren.Bryant@boston.gov to further discuss the project or process.

ZOOM TIPS

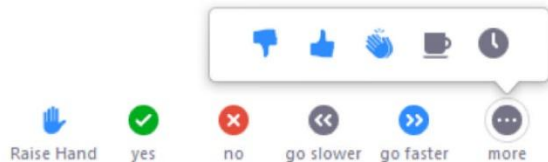
Here is how you can participate during the question and answer part of the presentation.

DURING THE PRESENTATION:



VIA WEB:

Turn video on / off.



To use these non-verbal options click on participants (bottom of screen); these options will pop up in side bar.

DURING THE Q&A:



JOINING VIA PHONE?

Use *9 to raise hand to ask for audio / video permission to ask questions or provide comments.



VIA WEB:

Chat to ask questions / comments or provide responses to poll questions



Raise hand to ask for audio / video permission to ask questions or provide comments.

Zoom test question

How do you primarily access this park?

- A) Walk
- B) Drive
- C) Bike
- D) Bus

AGENDA

1

PROJECT TEAM INTRODUCTION

2

PROJECT OVERVIEW

3

PROJECT SCHEDULING AND FUNDING

4

PRESENTATION + COMMUNITY INPUT

5

LISTENING & DISCUSSION

6

CLOSING REMARKS & NEXT STEPS

PROJECT TEAM

LAUREN BRYANT

PROJECT MANAGER

Lauren.Bryant@boston.gov or 617-961-3019

CHRISTINE BRANDAO

OUTREACH COORDINATOR, EXTERNAL AFFAIRS

christine.brandao@boston.gov or 617-961-3006

G2 COLLABORATIVE LANDSCAPE ARCHITECTURE

Gigi Saltonstall + Lisa Giersbach, Principals

Patricia Noto, Project Manager

Wenlin Yang, Intern

DENYEL FONSECA

OFFICE OF NEIGHBORHOOD SERVICES

denyel.fonseca@boston.gov

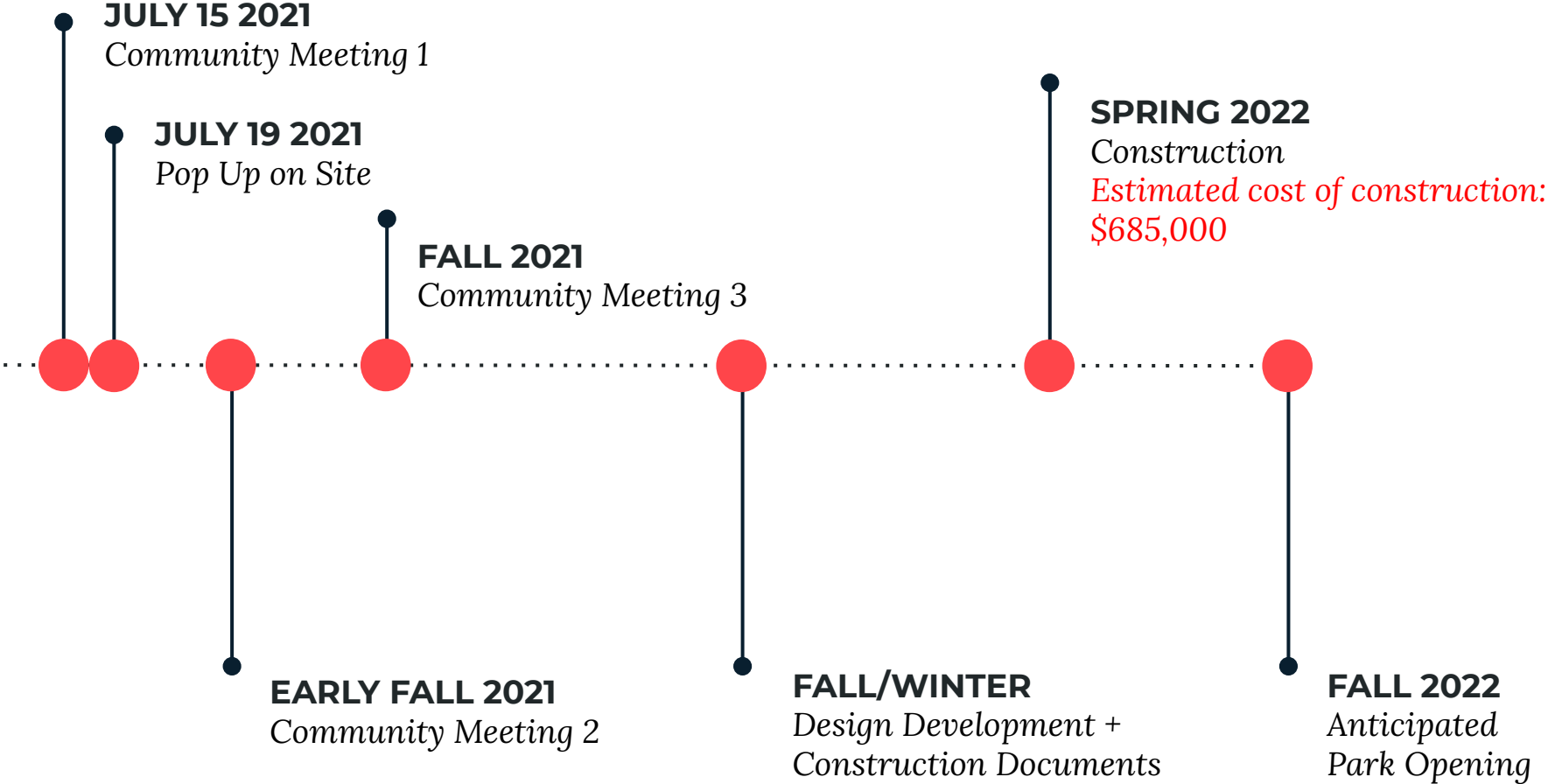


An aerial photograph showing a residential neighborhood with a mix of houses and trees. A large green golf course is visible on the left side. A yellow dot is placed on a dirt area in the center, with a yellow line pointing to the text 'McGANN PARK'. The street 'WEST STREET' is labeled in white text on the right side of the image.

McGANN PARK

PROJECT OVERVIEW

PROJECT SCHEDULE & FUNDING





City of Boston
Priorities

Safety Guidelines+
Regulatory
Guidelines

**PARK
DESIGN**

Parks + Recreation
Goals

Community
Input

CITY OF BOSTON PRIORITIES

- **Expanding walkable access to parks**
- **Addressing equity**
- **Climate resilience**
- **Health**
- **Housing and community building**

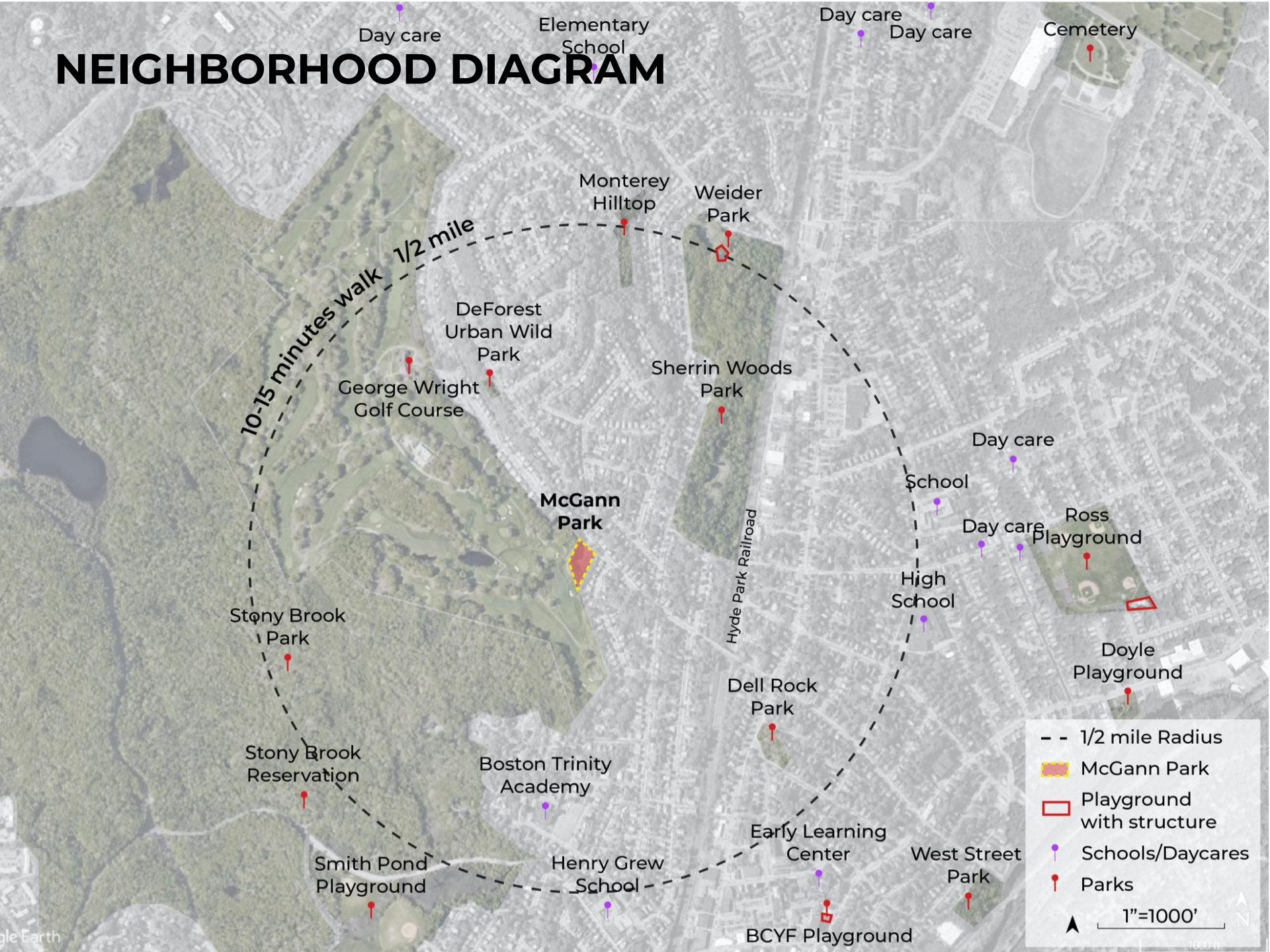


PARK & RECREATION GOALS

- **Accessible and available to all**
- **Diverse, balanced, and efficient mix of uses**
- **Meaningful and inclusive community engagement**
- **Adaptive and resilient landscapes**
- **Promote connections**



NEIGHBORHOOD DIAGRAM



NEIGHBORHOOD DIAGRAM

OPEN SPACE



SHERRIN WOODS



STONY BROOK PARK

GEORGE WRIGHT GOLF COURSE



1"=1000'

NEIGHBORHOOD DIAGRAM

PLAYGROUNDS



BCYF PLAYGROUND



ROSS PLAYGROUND



SMITH POND FIELDS



- 1/2 mile Radius
- McGann Park
- ▭ Playground with structure
- Schools/Daycares
- Parks

1"=1000'

THE SITE

Golf course



Playground



Open lawn



Surrounding neighborhood



WEST STREET



EXISTING CONDITIONS

George Wright
Golf Course

Lodgehill Rd

West St.

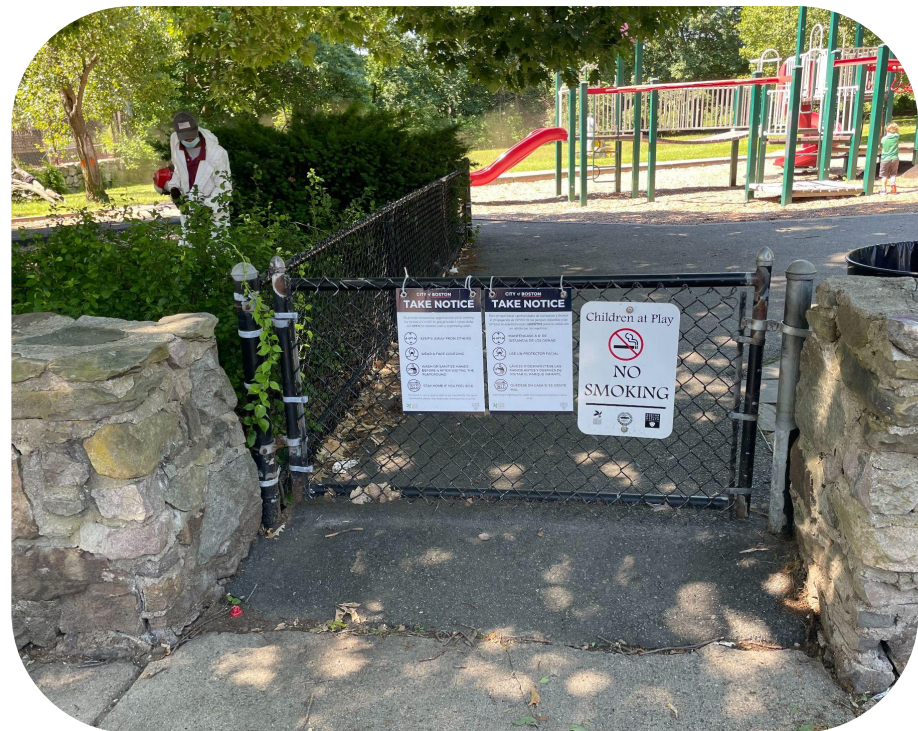
Myopia Rd.

- ← Gated Entrance
- ▭ Playground
- ▭ Lawn
- ▭ Vegetation
- ▭ Existing Wall
- ▭ Existing Fence
- - - Site Boundary
- ▭ Seating/Table
- ⊞ Bus Stop

▲ 1"=60'



ENTRANCES OFF WEST STREET



ACTIVITY DIAGRAM

George Wright
Golf Course



Lodgehill Rd.

West St.

Myopia Rd.

Passive Play

Active Play

Limited Access

- - - Site Boundary
- Water Feature
- Play Structure

1"=60'

PLAY STRUCTURES + WATER FEATURE



SWINGS



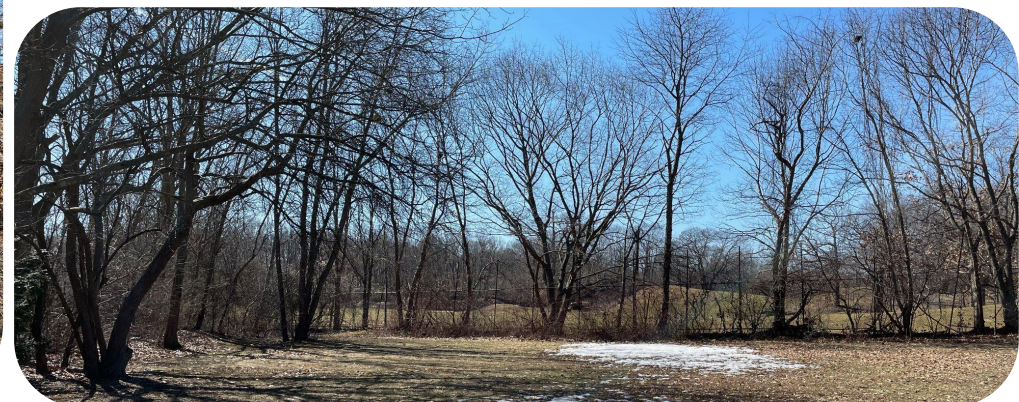
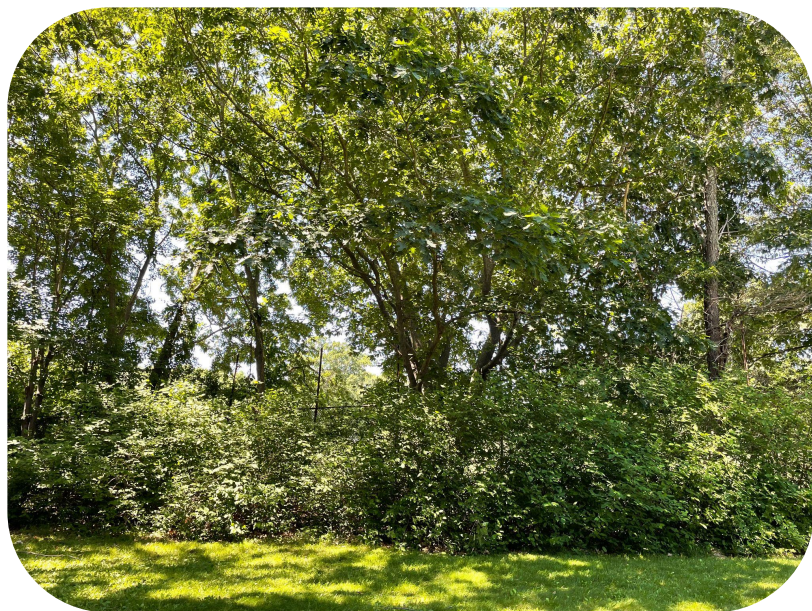
SEATING



PARK PERIMETER - SIDES



PARK PERIMETER - REAR



TOPOGRAPHY

George Wright
Golf Course

High Point
+6

+3

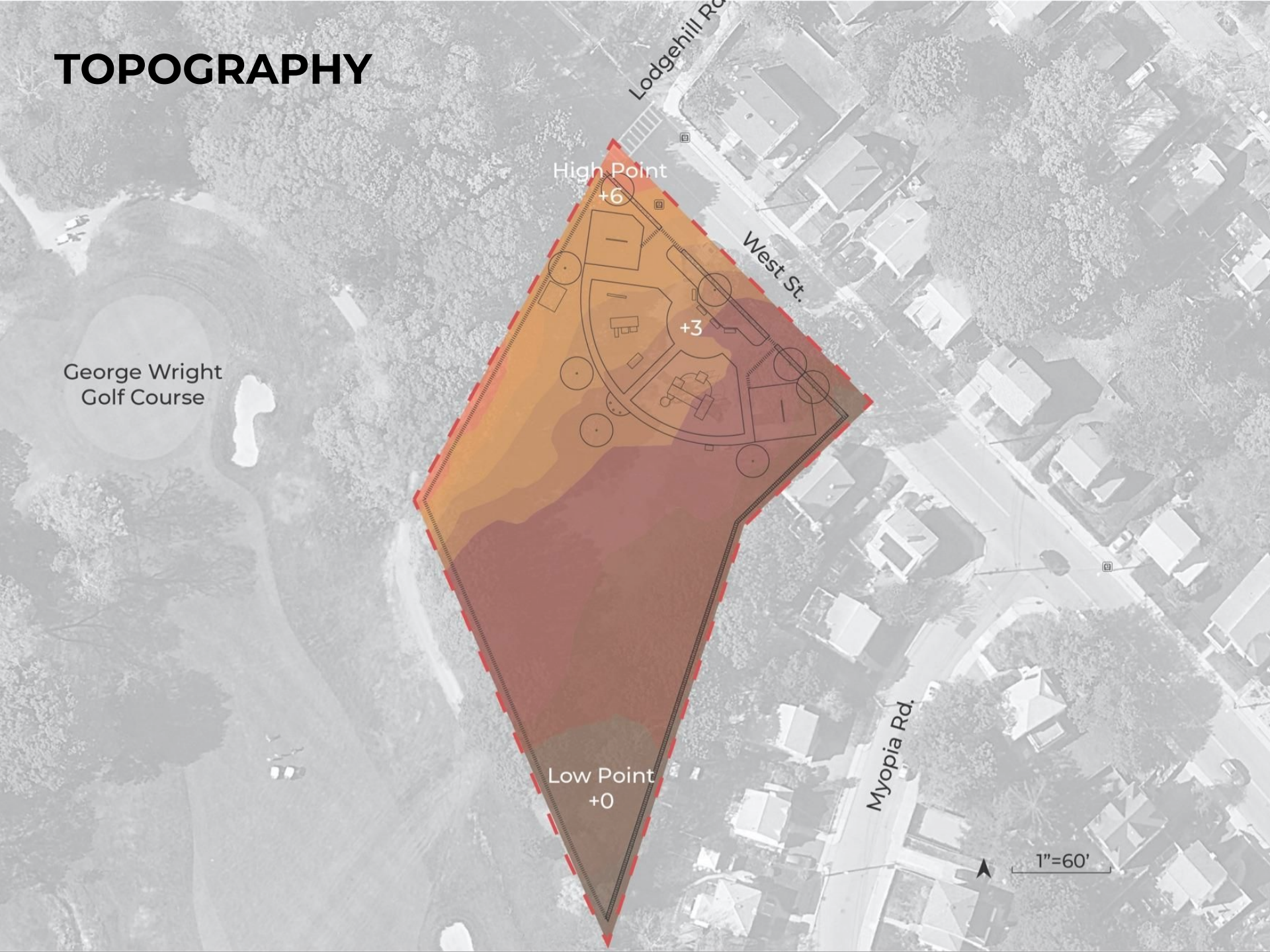
Low Point
+0

Lodgehill Rd.

West St.

Myopia Rd.

1"=60'



SHADOW STUDY - SPRING + FALL



9AM



12PM



4PM



SHADOW STUDY - SUMMER



9AM



12PM

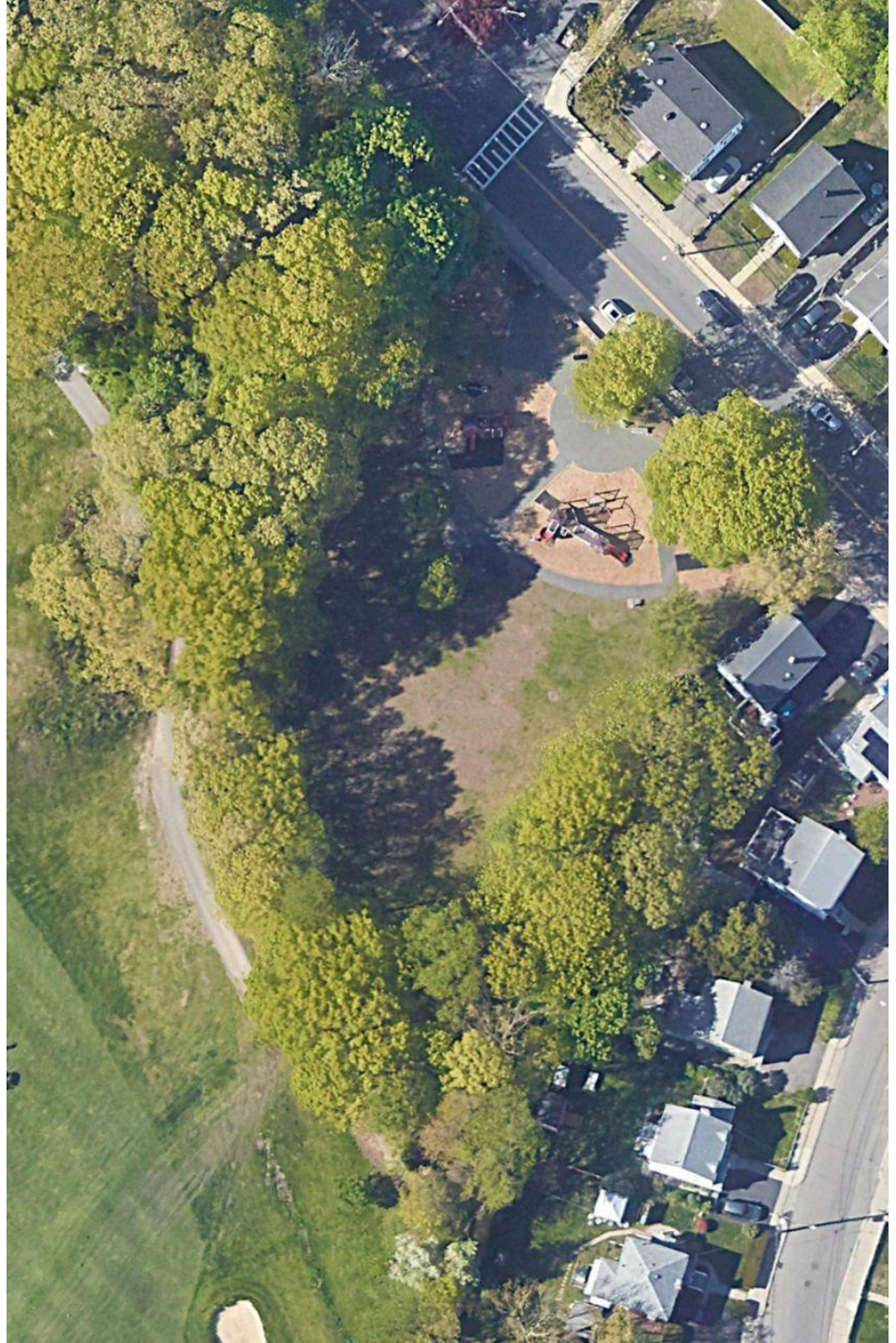


4PM



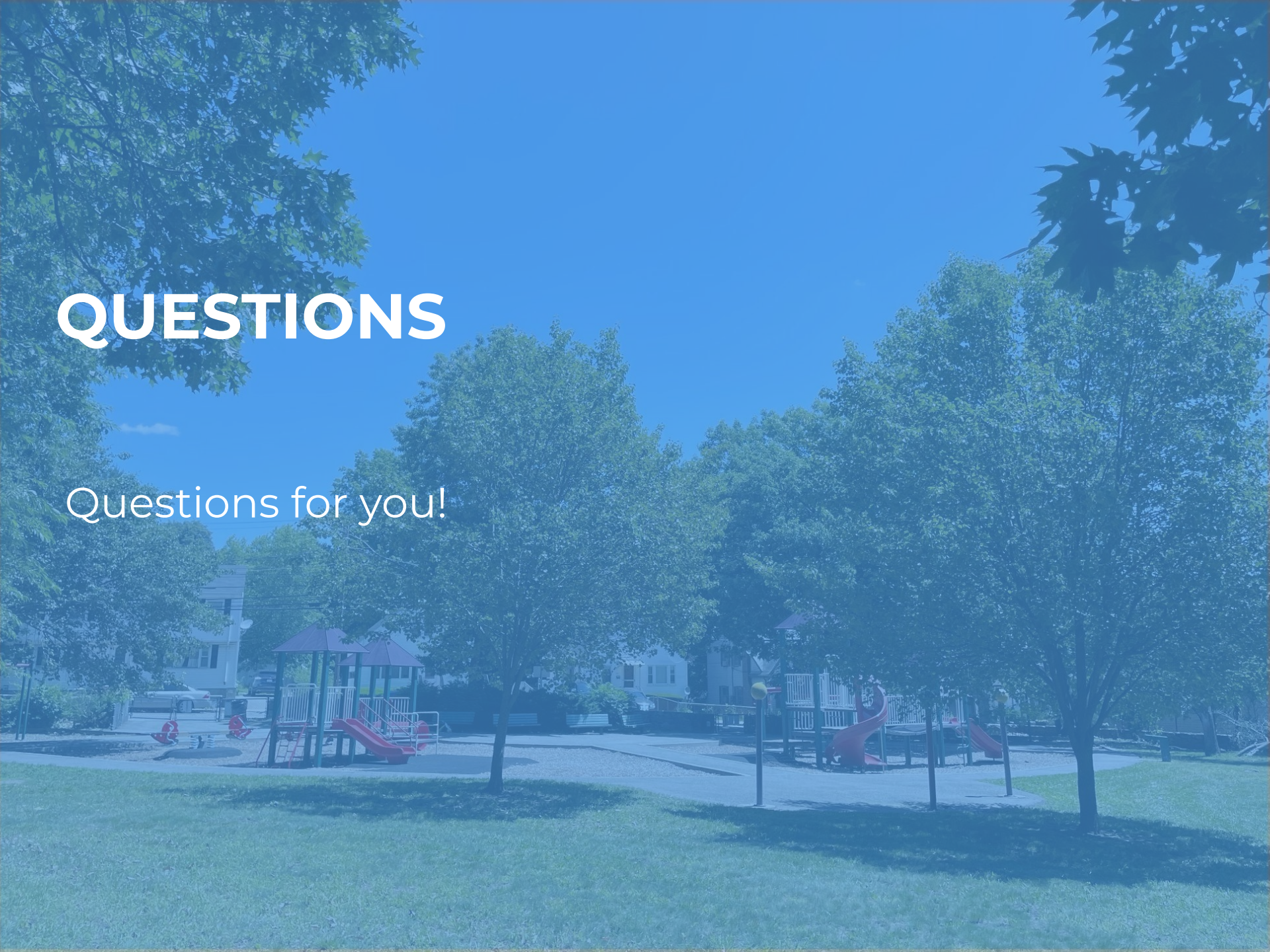
SITE GOALS

- **Activate + utilize more of the site**
- **Increase site accessibility**
- **Provide diverse play opportunities for a variety of ages**
- **Maintain water play**
- **Add more strategic seating**



QUESTIONS

Questions for you!



Questions

What time of day do you most visit the park?

E) 6am-9am

F) 9am-noon

G) noon-3pm

H) 3pm-6pm

Questions

Who do you normally go to the park with?

I) My own kids

J) Daycare

K) I meet up with other friends/family

L) By myself

M) Other - *write ideas into chat box*

Questions

When visiting the park, how many other visitors are generally there at the same time?

N) 0-5

O) 6-10

P) 11-15

Q) 16+

Questions

Are the play opportunities sufficient for the number of children in the park?

R) Yes

S) No

Questions

Does the playground accommodate the ages of children in the neighborhood?

T) Yes

U) No

Questions

What do you love about this park?

V) The play equipment

W) The water feature

X) The open space for my kids to run around

Y) Other - *write ideas into chat box*

Questions

What makes you want to come to this park over others?

Z) It's close to my home or work

A1) It's not too crowded

B1) The play equipment is great for kids

C1) There's space for adults to supervise kids easily

D1) Other - *write ideas into chat box*

Questions

What most needs improving in this park?

E1) Accessibility of the play equipment

F1) Play equipment needs to be moved farther into the park, away from the street

G1) The open space could be better utilized

H1) The play equipment is aging and needs to be updated

I1) Other - *write ideas into chat box*

Questions

What would you most like to see in a future park?

J1) Updated play equipment + water feature

K1) Updated entrance with new gates

L1) Green space

M1) A trike loop

N1) Spaces for older adults

O1) Other - *write ideas into chat box*

LISTENING & DISCUSSION

Help us build great parks.
Let us know what matters to you.



THANK YOU!

On Site Pop Up: Monday, July 19 McGann Park, 4-6 pm

Please come by and give us your feedback in person!

For questions, maintenance requests or
concerns regarding any of our
parks contact 311

BOS:
311

For questions or comments on the project, please reach out to Lauren Bryant at
Lauren.Bryant@boston.gov or at 617-961-3019

